



KODAK

Kodak
Brownie
Premo
Graflex

1922

In Quest of Happiness.

HAPPINESS is what all the world is seeking and the number of people who find it is far greater than your pessimist would admit or believe.

A great many more of us would find it too, if we did not make the mistake of believing pleasure to be the real thing. Of course pleasure, which can be bought, has its place; but happiness is part of life itself and it cannot be bought. It must be earned.

Yet though there is no royal road to happiness, nearly all really happy men and women have one secret in common—they can love and appreciate nature in all her moods and phases. If it is not yours already you should try to learn this secret. One of the best ways of setting about it would be to take up Kodak Photography, for a Kodak will take you into the country—though you may think it is you who are taking the Kodak!—and it will make you *want* to look for all that is most cheerful and beautiful in everything around you.

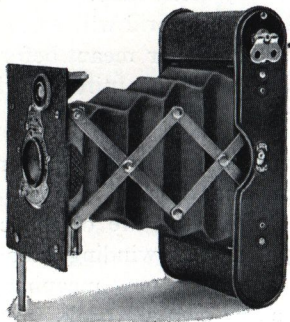
Once you have got a Kodak of your own and have realised the wonderful power it confers on you—the power to make pictures of any scene that appeals to you—the beauty of the world will mean more to you than it has ever meant before. And to appreciate this beautiful world is to be happy.

Children playing in the garden or on the beach, the dappled ground beneath the sunlit trees, the life of the city, the pic-nic party, the winding lane—everything, in fact, has a new meaning for you when once you own a Kodak. You begin to see the beauty in things that you hardly noticed before, to look for pictures wherever you may be—and looking for pictures is a perfectly delightful pastime !

And the Autographic Feature, which is fitted to every Folding Brownie and Kodak except the Stereo, enables you to write essential details on the film immediately after you have made the exposure, so that you have a permanent record of the date, event, place or whatever fact you may wish to keep in mind.

What more can you want? So get a Kodak—it will show you how to be happy !

Vest Pocket *Autographic* Kodak



THE Vest Pocket is to other cameras what a watch is to a clock—equally accurate but without the bulk. It slips into the waistcoat pocket, and is always ready—one quick pull, a pressure on the release and the picture is taken.

A great feature of this Kodak is the Autographic, which enables the operator to write the date, title, or any other information on autographic film immediately after the exposure is made.

The camera is made of metal, and the regular model is fitted with Meniscus

achromatic (single) lens, or Rapid Rectilinear (double) lens, producing excellent pictures under all ordinary conditions. The shutter—the Kodak Ball Bearing—has speeds of $\frac{1}{25}$ and $\frac{1}{50}$ of a second, and also Time and Brief Time actions.

The *Special* model offers the same high quality of workmanship and finish, but in addition has a covering of finest quality pin grain morocco. It is only supplied fitted with an Anastigmat lens, the best type of lens made.

For pictures $2\frac{1}{2} \times 1\frac{5}{8}$ in.

Capacity, 8 exposures without reloading.

Size of Kodak, $1 \times 2\frac{3}{8} \times 4\frac{3}{4}$ in. Weight, 11 ounces.

Special, Lenses, Kodak Anastigmat, *f.* 7.7, $3\frac{1}{2}$ in. focus; Kodak Anastigmat, *f.* 6.9, $3\frac{1}{2}$ in. focus; T.T.H.-Kodak Anastigmat *f.* 6.5, $3\frac{1}{2}$ in. focus. Cooke Series III, *f.* 6.5, $3\frac{1}{2}$ in. focus, or Ross Homocentric, *f.* 6.8, $3\frac{1}{2}$ in. focus.

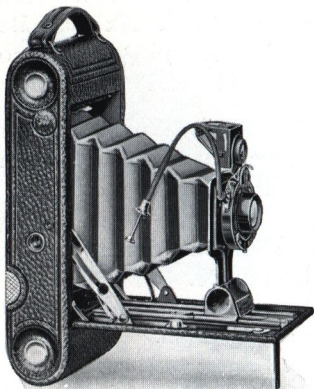
Kodak Ball Bearing Shutter No. 0, with finger release only (cable release attachment sold separately).

Brilliant finder, reversible for vertical or horizontal pictures.

Metal parts finished in nickel and black enamel. Black leather bellows.

Autographic Feature.

Nos. 1 and 1A
Autographic **Kodaks Junior**



SO thin and compact as to slip easily into the pocket, the Juniors are high grade and dependable cameras. They are scientifically designed, simple in operation, strongly made and moderate in price.

Both cameras are fitted with the Kodak Ball Bearing shutter; the No. 1 with speeds of $\frac{1}{25}$ and $\frac{1}{50}$ of a second, as well as

Brief Time and Time exposures, except when supplied with *f.* 7.7 lens, in which case it has speeds of $\frac{1}{25}$, $\frac{1}{50}$ and $\frac{1}{100}$, which are also those of the No. 1A. Both cameras are furnished with the Autographic feature by means of which the dates, titles, etc. of the exposures can be recorded immediately after they are made. They are provided with collapsible, reversible finders, and two tripod sockets, and are covered with grain leather ; metal parts are of nickel and black enamel. For those who desire them, these cameras will be supplied with a fixed focus.

No. 1

For pictures $3\frac{1}{4} \times 2\frac{1}{4}$ in.

Capacity, 6 exposures without reloading.

Size of Kodak, $1\frac{7}{8} \times 3\frac{5}{8} \times 6\frac{5}{8}$ in. Weight, $21\frac{1}{2}$ oz.

Autographic Feature.

No. 1A

For pictures $4\frac{1}{4} \times 2\frac{1}{2}$ in.

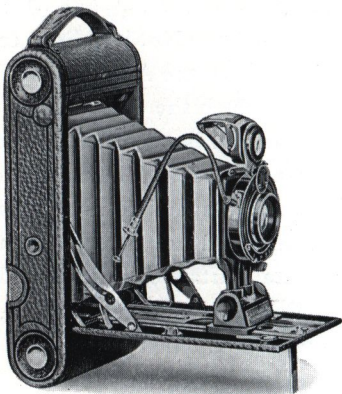
Capacity, 12 exposures without reloading.

Size of Kodak, $1\frac{5}{8} \times 3\frac{3}{4} \times 8$ in. Weight, $27\frac{1}{2}$ oz.

Autographic Feature.

The Fixed Focus models are only fitted with Single (Meniscus Achromatic) lenses. The Focussing models are equipped with either a Single or a Rapid Rectilinear lens. No. 1, $4\frac{1}{4}$ in. focus; No. 1A, $5\frac{1}{2}$ in. focus; or with the Kodak Anastigmat *f.* 7.7, No. 1, 4 in. focus; No. 1A, $5\frac{1}{4}$ in. focus.

Nos. 2C and 3A
Autographic Kodaks Junior



THE pictures made by the 2C and 3A Juniors are of delightful proportions—the 2C just under postcard size and the 3A the standard postcard size. These dimensions lend themselves to pleasing composition for either vertical or horizontal pictures, and are specially suitable for the making of attractive enlargements.

The Nos. 2C and 3A Kodaks Junior load in daylight with ten or six exposure

Autographic Film Cartridges, and by means of the Autographic feature, the date and title, or any data that may be desired, can be recorded on the negative. They are regularly supplied with single (meniscus achromatic) lens, Rapid Rectilinear—No. 2C, $5\frac{1}{2}$ in. focus; No. 3A, $6\frac{3}{4}$ in. focus; or Kodak Anastigmat, *f.* 7.7. No. 2C, $5\frac{1}{2}$ in. focus; No. 3A, $6\frac{3}{4}$ in. focus.

The shutter is, in each case, the Kodak Ball Bearing with cable release, working at speeds of $\frac{1}{25}$, $\frac{1}{50}$ and $\frac{1}{100}$ of a second, also for Brief Time and Time exposures, These Kodaks have brilliant reversible collapsible finder. Two tripod sockets. Black leather bellows.

No. 2C

For pictures $4\frac{7}{8} \times 2\frac{7}{8}$ in.

Capacity, 10 exposures without reloading.

Size of Kodak, $1\frac{3}{4} \times 4\frac{3}{8} \times 8\frac{3}{4}$ in. Weight, 34 oz.

Adjustable focus only; with automatic focussing lock.

Autographic Feature.

No. 3A

For pictures $5\frac{1}{2} \times 3\frac{1}{4}$ in.

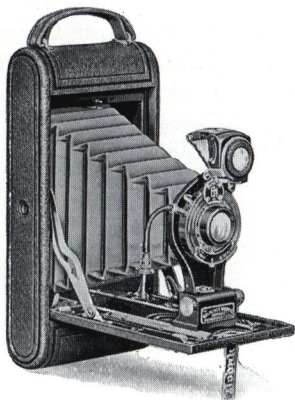
Capacity, 10 exposures without reloading.

Size of Kodak, $1\frac{5}{8} \times 5\frac{1}{8} \times 9\frac{3}{4}$ in. Weight, 37 oz.

Adjustable focus only; with automatic focussing lock.

Autographic Feature.

No. 1A *Autographic* Kodak



THE special features of this camera are high quality of materials, workmanship, finish and design. It is small and compact, easy to operate, and no expense has been spared to make it handsome and durable.

The No. 1A makes $4\frac{1}{4} \times 2\frac{1}{2}$ in. pictures, a shape that is widely adapted to either

horizontal or vertical composition. It has the autographic feature for the recording of data on the film immediately after exposure, and loads in daylight with twelve and six exposure Autographic Film Cartridges.

Although regularly fitted with the best quality Rapid Rectilinear lens, it can also be supplied, if desired, with Kodak Anastigmat lens, $f.7.7$, giving the advantages of a fine anastigmat equipment at a low price. The shutter is the Kodak Ball Bearing, with cable release, working at speeds of $\frac{1}{25}$, $\frac{1}{50}$ and $\frac{1}{100}$ of a second, and Time and Brief Time exposures.

For pictures $4\frac{1}{4} \times 2\frac{1}{2}$ in.

Capacity, 12 exposures without reloading.

Size of Kodak, $1\frac{5}{8} \times 3\frac{3}{4} \times 8$ in. Weight, 27 oz.

Lens, double combination, Rapid Rectilinear, $5\frac{1}{4}$ in. focus, or Kodak Anastigmat lens, $f. 7.7$, $5\frac{1}{4}$ in. focus.

Shutter, Kodak Ball Bearing with cable release.

Adjustable focus, with Automatic focussing lock.

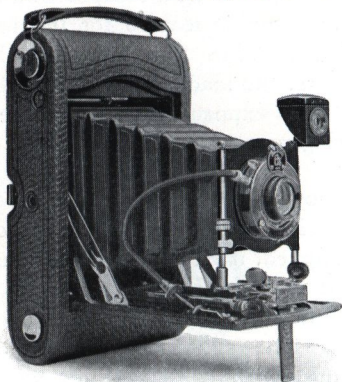
Two tripod sockets.

Brilliant, collapsible, reversible finder.

Black leather bellows.

Autographic Feature.

Nos. 3 and 3A *Autographic* Kodaks



THESSE Kodaks embody every improvement, (including the *Autographic* feature, by means of which the date of taking and title of the subject can be recorded on the margin of the negative at the time the exposure is made), that is essential to the best results in general amateur photography.

Both cameras are regularly fitted with the best Rapid Rectilinear lenses, No. 3, $5\frac{1}{4}$ in. focus; No. 3A, $6\frac{1}{2}$ in. focus; and if

desired will be supplied with Kodak Anastigmat *f.* 7.7 lenses, No. 3, $5\frac{1}{4}$ in. focus, No. 3A, $6\frac{1}{2}$ in. focus, or with T.T.H.-Kodak Anastigmat *f.* 6.8 lenses, 5 in. and 6 in. focus respectively, offering the advantages of perfect definition and flatness of field; they have Kodak Ball Bearing shutters with cable release, and rising and sliding fronts; the body and base are made of aluminium, and are covered with the best seal grain leather, while the metal fittings are highly nickelled.

The Nos. 3 and 3A have two tripod sockets, black leather bellows, brilliant reversible finders with hoods, and automatic focussing locks.

No. 3

For pictures $4\frac{1}{4} \times 3\frac{1}{4}$ in.

Capacity, 12 exposures without reloading.

Size of Kodak, $1\frac{3}{4} \times 4\frac{1}{2} \times 7\frac{1}{2}$ in. Weight, 30 oz.

Autographic Feature.

No. 3A

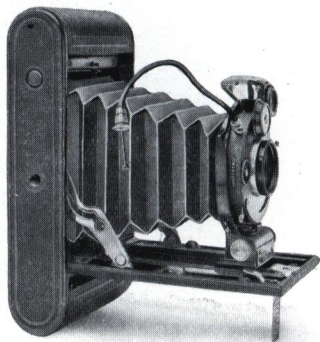
For pictures $5\frac{1}{2} \times 3\frac{1}{4}$ in.

Capacity, 10 exposures without reloading.

Size of Kodak, $2 \times 4\frac{3}{4} \times 9\frac{1}{2}$ in. Weight, 41 oz.

Autographic Feature.

No. 1 *Autographic* Kodak Special



THE Autographic Kodaks Special represent the highest type of Kodak efficiency. They have every feature the most discriminating amateur can desire, and yet are simple enough for a beginner to get good results from the start.

The No. 1 is a gem of compactness and efficiency. Its lens is large enough to have both speed and a sufficient focal length to prevent distortion, and its shutter of sufficient size to give the full benefit of these qualities.

The regular equipment is the Kodak Anastigmat lens, $f. 6.3$, $4\frac{1}{4}$ in. focus and Compur shutter, with cable release, highest speed $\frac{1}{250}$ of a second. This Special Kodak can also be supplied with lenses as below.

Like the other Autographic Kodaks, the No. 1 Special is fitted with the autographic device, enabling the operator to date, title, etc. his negatives at the time the exposures are made.

The camera is beautifully finished throughout and covered with the finest quality long grain calf; the metal parts are in nickel and black enamel.

For pictures $3\frac{1}{4} \times 2\frac{1}{4}$ in.

Capacity, 6 exposures without reloading.

Size of Kodak, $1\frac{5}{16} \times 3\frac{1}{16} \times 6\frac{7}{16}$ in. Weight, 23 oz.

Lens, Bausch and Lomb Kodak Anastigmat, $f. 6.3$, $4\frac{1}{2}$ in. focus; Cooke Anastigmat, $f. 6.5$, $4\frac{3}{4}$ in. focus; Cooke "Aviar," $f. 4.5$, $4\frac{1}{4}$ in. focus; Ross Homocentric lens, $f. 6.3$, $4\frac{1}{4}$ in. focus, or Ross Xpres, $f. 4.5$, $3\frac{1}{2}$ in. focus.

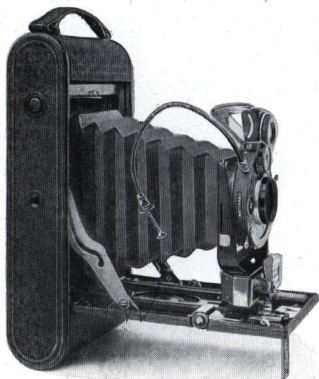
Shutter, Compur with cable release.

Brilliant, reversible, collapsible finder.

Two tripod sockets and lever focussing device.

Autographic Feature.

No. 1A *Autographic* Kodak Special



THE No. 1A *Special* is a camera de luxe, taking a $4\frac{1}{4} \times 2\frac{1}{2}$ in. picture and representing the maximum in beauty of design, finish, speed and accuracy in hand cameras. Its high speed shutter is perfectly adapted for use with high speed Anastigmat lenses, and the Kodak is constructed of the best materials throughout, the body of aluminium covered with the finest long grain calf.

In addition to the important autographic feature for the dating and titling of the film immediately after exposure, there is the Kodak Range Finder permitting accurate focussing—simply, quickly and efficiently, without the necessity of estimating distances. The lens regularly supplied is the Kodak Anastigmat *f.* 6.3, 5 in. focus, and the shutter is the Compur with eight variable speeds, from $\frac{1}{250}$ of a second down to Brief Time and Time exposures. This Kodak can also be obtained fitted with the Ross Homocentric lens, or the B. and L. Kodak Anastigmat.

For pictures $4\frac{1}{4} \times 2\frac{1}{2}$ in.

Capacity, 12 exposures without reloading.

Size of Kodak, $1\frac{5}{8} \times 3\frac{3}{4} \times 8$ in. Weight 34 oz.

Lens, Bausch and Lomb Kodak Anastigmat *f.* 6.3, $5\frac{1}{4}$ in. focus, Cooke "Aviar" *f.* 6.3, $5\frac{1}{2}$ in. focus, or Ross Homocentric lens *f.* 6.3, 5 in. focus.

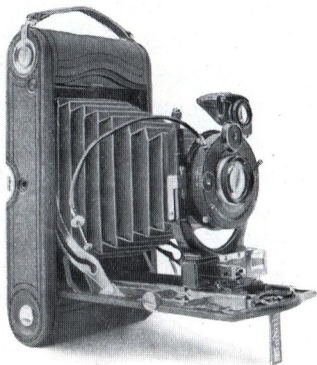
Shutter, Compur. Two tripod sockets.

Brilliant, reversible, collapsible finder with adjustable mask.

Rack and pinion for focussing.

Autographic Feature.

Nos. 3 and 3A
Autographic Kodaks Special



No. 3A Autographic Kodak Special.

THE 3 and 3A Specials represent the nearest approach to perfection in hand camera craftsmanship. In exquisite workmanship, in optical and mechanical devices, they leave nothing to be desired.

The No. 3A *Special* with its autographic feature for the dating, titling, etc. of the exposure immediately after it is made—and Kodak Range Finder which gives the correct focus to a hair—is with-

out a peer in hand cameras. The No. 3 also contains the autographic feature, but is *not* fitted with Range Finder. Both the 3 and 3A are equally efficient optically, offering a choice of the Kodak Anastigmat, *f.* 6.3, 5 in. and $6\frac{3}{4}$ in. focus respectively and other high-grade lenses. They are furnished with Compur shutters, highest speed $\frac{1}{250}$ and $\frac{1}{200}$ of a second respectively.

No. 3

For pictures $4\frac{1}{4} \times 3\frac{1}{4}$ in.

Capacity, 12 exposures without reloading.

Size of Kodak, $1\frac{7}{8} \times 4\frac{1}{2} \times 8$ in. Weight, 32 oz.

Lens, Bausch and Lomb Kodak Anastigmat *f.* 6.3, $5\frac{1}{4}$ in. focus, Cooke Anastigmat *f.* 6.5, 5 in. focus, Cooke "Aviar" *f.* 4.5, $5\frac{1}{4}$ in. focus, or Ross Homocentric *f.* 6.3, 5 in. focus.

View Finder, brilliant, reversible with hood. Spirit level. Rack and pinion. Tripod sockets. Autographic Feature.

No. 3A

For pictures $5\frac{1}{2} \times 3\frac{1}{4}$ in.

Capacity, 10 exposures without reloading.

Size of Kodak, $2 \times 4\frac{3}{4} \times 9\frac{1}{2}$ in. Weight, 42 oz.

Lens, Bausch and Lomb Kodak Anastigmat *f.* 6.3, $6\frac{3}{4}$ in. focus, Cooke "Aviar" *f.* 6.3, $6\frac{5}{8}$ in. focus or Ross Homocentric *f.* 6.3, $6\frac{1}{2}$ in. focus.

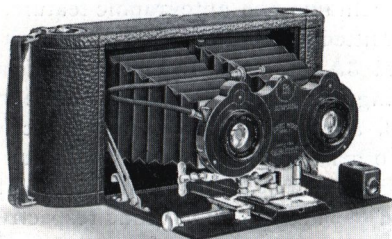
Kodak Range Finder.

View Finder, brilliant, reversible, collapsible with adjustable windows.

Rack and pinion. Tripod sockets.

Autographic Feature.

Stereo Kodak



PICTURES which give the full effect of depth, roundness, distance and perspective, can be obtained only by the use of twin lenses as in the Stereo, and when viewed through the stereoscope, give the correct visual effect, just as seen with the eyes.

For standard Stereo size pictures $3\frac{1}{8} \times 3\frac{3}{16}$ in.

Capacity, 6 exposures without reloading.

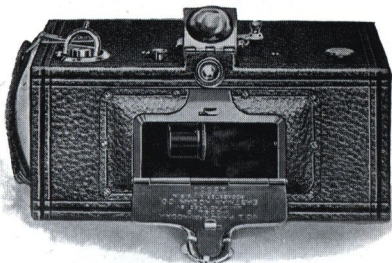
Size of Kodak, $2\frac{3}{16} \times 4\frac{3}{4} \times 10\frac{1}{2}$ in. Weight, 48 oz.

Lenses, Kodak Anastigmat, *f.* 7.7, $5\frac{1}{4}$ in. focus. Cooke, *f.* 6.5, 5 in. focus, or Ross Homocentric *f.* 6.3, 5 in. focus.

Shutter, double valve, Stereo Automatic, with finger and cable release, speeds $\frac{1}{25}$, $\frac{1}{50}$ and $\frac{1}{100}$ second, and time and brief time actions.

Brilliant finder, tripod socket, rising front, rack and pinion for focussing, and black leather bellows

Panoram Kodaks



FOR taking panoramic pictures of outdoor groups, landscapes, mountain views. Simplicity itself. The No. 1 has a scope of 112 degrees: the No. 4 of 142 degrees.

Fitted with specially selected single lens or with Ross Homocentric lens. Panoram shutter, two tripod sockets, and brilliant finder.

No. 1

For Panoramic pictures $7 \times 2\frac{1}{4}$ in.

Capacity, 6 exposures without reloading.

Size of Kodak, $3\frac{3}{8} \times 4\frac{3}{8} \times 7\frac{3}{8}$ in. Weight, 28 oz.

Takes Kodak N.C. Film.

No. 4

For Panoramic pictures $12 \times 3\frac{1}{2}$ in.

Capacity, 4 exposures without reloading.

Size of Kodak, $4\frac{3}{4} \times 5\frac{5}{8} \times 10\frac{1}{8}$ in. Weight, 45 oz.

Takes Kodak N.C. Film.

No. 0 Brownie



THIS, the smallest of the Brownies, makes pictures the popular Vest Pocket size, $2\frac{1}{2} \times 1\frac{5}{8}$ inches. It is accurate, reliable, efficient and economical to operate, and anybody can make good pictures with it from the beginning.

Like all the Brownies, it loads and unloads in daylight with Kodak Film Cartridges.

The Box Brownies are the simplest of all the cameras to operate.

For pictures $2\frac{1}{2} \times 1\frac{5}{8}$ in.

Capacity, 8 exposures without reloading.

Size of Brownie, $2\frac{5}{8} \times 3\frac{3}{8} \times 4\frac{1}{8}$ in. Weight, 8 oz.

Lens, meniscus.

Shutter, Eastman Rotary, with one stop.

Nos. 2 and 2A Brownies



SIMPLE and reliable, the Nos. 2 and 2A, like the other little box-form Brownies, are always in focus, and are arranged for instantaneous exposures and also for time action.

Both cameras have Eastman Rotary Shutters with three stops and two finders.

No. 2

For pictures $3\frac{1}{4} \times 2\frac{1}{4}$ in.

Capacity, 6 exposures without reloading.

Size of Brownie, $3\frac{1}{4} \times 4 \times 5\frac{5}{8}$ in. Weight, $15\frac{1}{2}$ oz.

Lens meniscus.

Takes Kodak N.C. Film.

No 2A

For pictures $4\frac{1}{4} \times 2\frac{1}{2}$ in.

Capacity, 12 exposures without reloading

Size of Brownie, $3\frac{7}{16} \times 5\frac{1}{8} \times 6\frac{1}{8}$ in. Weight, $19\frac{1}{2}$ oz.

Lens, meniscus achromatic.

Takes Kodak N.C. Film.

Nos. 2C and 3 Brownies



THE $4\frac{1}{4} \times 3\frac{1}{4}$, or quarter-plate, has always been a favourite size, and the No. 3 Brownie, with its fixed focus and consequent simplicity, is no exception to this rule.

The No. 2C Brownie takes a picture $4\frac{7}{8} \times 2\frac{7}{8}$ inches, one of the most popular amateur sizes. It has slightly more picture area than the No. 3, and its shape is adaptable to almost every composition.

Both of these Brownies are made of wood—strong and light at the same time, and are covered with durable imitation leather. Metal parts are nickelled, and the cameras have the daylight-all-the-way feature of the Kodaks.

They are equipped with meniscus achromatic Lens, Eastman Rotary Shutter with three stops, two tripod sockets, and two view finders.

While the Brownies are especially popular among children on account of their simplicity, they are used almost as freely by “grown-ups” who desire to make pictures easily and with a minimum of expense.

No. 2C

For pictures $4\frac{7}{8} \times 2\frac{7}{8}$ in.

Capacity, 10 exposures without reloading.

Size of Brownie, $3\frac{7}{8} \times 6\frac{1}{4} \times 7\frac{1}{4}$ in. Weight 28 oz.

Takes Kodak N.C. Film.

No. 3

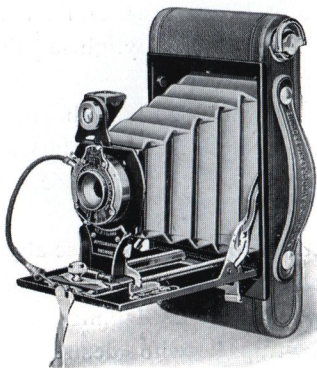
For pictures $4\frac{1}{4} \times 3\frac{1}{4}$ in.

Capacity, 12 exposures without reloading.

Size of Brownie, $4\frac{3}{8} \times 5\frac{1}{8} \times 6\frac{1}{8}$ in. Weight, 25 oz.

Takes Kodak N.C. Film.

Nos. 2 and 2A
Folding *Autographic* Brownies



POSSESSING, as they do, the autographic feature for the dating and titling of the film immediately after exposure, the round ends and compact form, these two Brownies are as efficient as they are simple to operate.

These thoroughly reliable little cameras load in daylight with Autographic Film

Cartridges; they are fitted with meniscus achromatic lenses, or, if desired, with Rapid Rectilinear, $3\frac{3}{4}$ in. focus and 5 in. focus respectively. They have the Kodak Ball Bearing shutter fitted with Kodak Auto-time Scale with Time and Brief Time action and speeds of $\frac{1}{25}$ and $\frac{1}{50}$ sec. for the No. 2 and also $\frac{1}{100}$ for the No. 2A.

These Folding Brownies have reversible finders for vertical and horizontal pictures; two tripod sockets; automatic focussing lock; black bellows.

The cameras are made of metal, covered with durable imitation leather; metal parts are finished in nickel and black enamel.

No. 2

For pictures $3\frac{1}{4} \times 2\frac{1}{4}$ in.

Capacity, 6 exposures without reloading.

Size of Brownie, $1\frac{1}{4} \times 3\frac{1}{8} \times 6\frac{1}{2}$ in. Weight, 19 oz.

Autographic Feature.

No. 2A

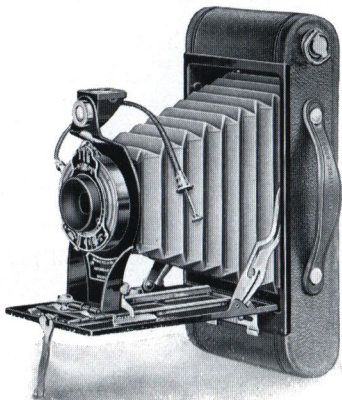
For pictures $4\frac{1}{4} \times 2\frac{1}{2}$ in.

Capacity, 12 exposures without reloading.

Size of Brownie, $1\frac{7}{8} \times 3\frac{3}{8} \times 7\frac{7}{8}$ in. Weight, 25 $\frac{1}{2}$ oz.

Autographic Feature.

Nos. 2C and 3A
Folding *Autographic* Brownies



THESSE two Brownies are cleverly constructed and well made throughout. The loading is very simple; they are quick to operate, and, like the other Folding Brownies, have the *Autographic* feature.

Both cameras load with ten or six exposure *Autographic* Film Cartridges;

they have the Kodak Ball Bearing shutter with snap-shot speeds of $\frac{1}{25}$, $\frac{1}{50}$ and $\frac{1}{100}$ of a second, and they are fitted with either single (meniscus achromatic) or double (Rapid Rectilinear) lenses, the latter 5 in. and $5\frac{1}{2}$ in. focus respectively.

These cameras are fitted with Kodak Ball Bearing Shutters, with Autotime Scale; reversible finders; two tripod sockets; automatic focussing locks; black leather bellows.

Both are made of metal covered with durable imitation leather, and have black leather bellows and nickel and black enamel fittings.

No. 2C

For pictures $4\frac{7}{8} \times 2\frac{7}{8}$ in.

Capacity, 10 exposures without reloading.

Size of Brownie, $1\frac{3}{4} \times 3\frac{3}{4} \times 8\frac{11}{16}$ in. Weight, 27 oz.

Autographic Feature.

No. 3A

For pictures $5\frac{1}{2} \times 3\frac{1}{4}$ in.

Capacity, 10 exposures without reloading.

Size of Brownie, $1\frac{11}{16} \times 4\frac{5}{16} \times 9\frac{5}{16}$ in. Weight, 32 oz.

Autographic Feature.

The Graflex

THE Graflex is the camera that eliminates photographic uncertainties. Its construction is such that the operator can see the image right side up, the size it will appear in the negative, *up to the instant of exposure*. The changing composition, the expression, or the arrangement of the subject can be watched until the required pictorial effect is secured, when a slight pressure on a lever releases the shutter, and the exposure is made. The image projected by the lens is reflected from the mirror, in the body of the camera, to the ground glass focussing screen in the top. This method of focussing makes it unnecessary to estimate the distance between the camera and subject, doing away with both focussing scale and "finder." There is no guess work with a Graflex.

Every Graflex is equipped with the Graflex Focal Plane Shutter. With this shutter it is possible to make automatic exposures ranging from $\frac{1}{10}$ to $\frac{1}{1000}$ of a

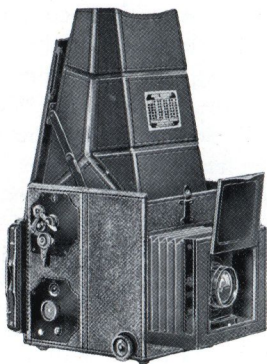
second, as well as time exposures of any duration. The construction of the Graflex Focal Plane Shutter is such that it permits the lens to work at its maximum efficiency during the entire period of exposure—no illumination is lost in the opening and closing of the shutter. The same principles that enable the Graflex to portray with the utmost precision of detail the most rapidly moving objects, will also enable it to secure perfect results under conditions that with an ordinary camera would result in failure.

The Graflex is made with the greatest accuracy from the best materials that have ever been used in camera construction, and is subjected to a rigid inspection and test before being placed on the market.

The rich appearance of the Graflex is fully in keeping with its mechanical excellence.

The body of the camera is made of the finest grade of mahogany, covered with Persian morocco leather. All uncovered wood parts are ebonized, and all exposed metal parts are oxydized.

The Auto Graflex



THE Auto Graflex is made in three sizes: $4\frac{1}{4} \times 3\frac{1}{4}$, 5×4 , and 7×5 in. The reflecting mirror and Graflex Focal Plane Shutter are a part of this camera, the shutter permitting speeds from time to $\frac{1}{1000}$ of a second. The new design focussing hood renders focussing particularly easy.

The Auto Graflex takes the regular Graflex Holder for Portrait Film, and is constructed to take the Graflex Roll

Holder, the Graflex Magazine Plate Holder, which may be loaded with twelve Portrait Films, and the Film Pack Adapter which takes the Film Pack.

The Auto Graflex may be fitted with any of the well known Anastigmats, but we recommend the lenses listed with each model.

The 7×5 Auto Graflex differs slightly in construction from the smaller sizes. Since room must be allowed for the action of the mirror, it is impossible to fit short focus lenses.

For pictures $4\frac{1}{4} \times 3\frac{1}{4}$ in.
Dimensions, $5\frac{3}{4} \times 5\frac{3}{8} \times 6\frac{1}{4}$ in. Weight, $3\frac{3}{4}$ lb.
Focal capacity, 7 in.
Size of lens board, $2\frac{7}{8} \times 2\frac{7}{8}$ in.
Minimum focus of lens accommodated, 5 in.

For pictures 5×4 in.
Dimensions, $6\frac{3}{4} \times 6\frac{1}{4} \times 7\frac{1}{4}$ in. Weight, 5 lb.
Focal capacity, $8\frac{1}{2}$ in.
Size of lens board, $3\frac{1}{4} \times 3\frac{1}{4}$ in.
Minimum focus of lens accommodated, 6 in.

For pictures $6\frac{1}{2} \times 4\frac{3}{4}$ or 7×5 in.
Dimensions, $9\frac{1}{4} \times 8\frac{1}{4} \times 8\frac{3}{4}$ in. Weight, 8 lb.
Focal capacity, 12 in.
Size of lens board, 4×4 in.
Minimum focus of lens accommodated, $7\frac{1}{2}$ in.

The Auto Graflex Junior



THIS little camera, although small in size and light in weight, embodies all of the exclusive Graflex features—the reflecting mirror, Graflex Focal Plane Shutter with safety device, and Graflex quality and workmanship. It is a camera that can be relied upon to take difficult pictures as well as average views.

The shutter is the standard Auto Graflex Focal Plane Shutter, with five fixed apertures, permitting exposures of any duration from time to $\frac{1}{1000}$ of a second. A safety

device is provided which prevents the winding of the shutter curtain until the reflecting mirror is depressed, thus preventing the possibility of fogging the plate or film.

The front is of exceptional rigidity, as the focussing racks and front standards are stamped from one piece of heavy brass.

The focussing hood is readily detachable, allowing easy access to the ground glass focussing screen. The focussing hood is automatic in its action, and is finished with a square top, making it exceptionally easy to secure vertical pictures with the camera held on its side.

The Auto Graflex Junior is supplied with a depressed cupped metal front for carrying the lens.

Eastman Graflex Film, Premo Film Packs, or Portrait Film, whichever best suits the requirements, may be interchangeably used in the various Graflex Attachments that fit the camera.

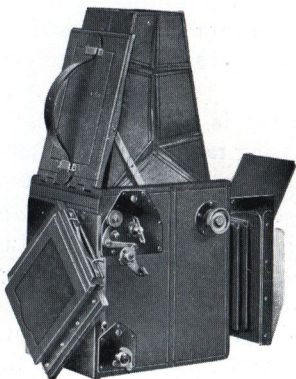
For pictures $3\frac{1}{4} \times 2\frac{1}{4}$ in.

Dimensions, closed, $5 \times 4\frac{3}{8} \times 5$ in.

Focal capacity, $5\frac{1}{2}$ in. Weight, 39 oz.

Minimum focus of lens accommodated, 4 in.

Revolving Back Graflex Junior



FITTED with revolving back, permitting the back to be turned from a vertical to a horizontal position or intermediately, without removing it. In other respects the camera is practically the same as the Auto Graflex Junior, except that the body is made a trifle longer to accommodate the greater length of mirror required.

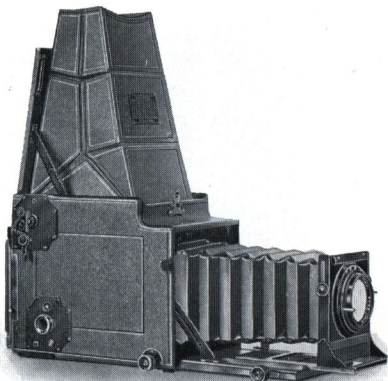
For pictures $3\frac{1}{4} \times 2\frac{1}{4}$ in.

Dimensions, closed, $6 \times 4\frac{1}{2} \times 6\frac{1}{4}$ in. Weight, $3\frac{1}{4}$ lb.

Focal capacity, $7\frac{1}{4}$ in.

Minimum focus of lens accommodated, $5\frac{1}{4}$ in.

Revolving Back Auto Graflex



THE great bellows capacity of this camera permits close approach for full sized reproduction.

For pictures $4\frac{1}{4} \times 3\frac{1}{4}$ in.

Dimensions, $8\frac{1}{2} \times 5\frac{1}{2} \times 7$ in. Weight, $5\frac{3}{4}$ lb.

Size of lens board, $3\frac{1}{4} \times 3\frac{1}{4}$ in.

Focal capacity, $15\frac{1}{2}$ in.

Minimum focus of lenses accommodated, $7\frac{1}{8}$ in.

For pictures 5×4 in.

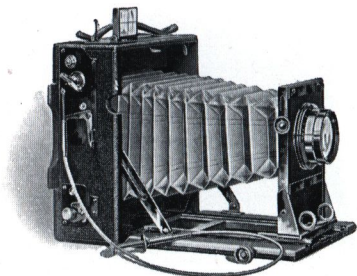
Dimensions, $10 \times 6\frac{1}{4} \times 8$ in. Weight, $7\frac{1}{2}$ lb.

Size of lens board, $3\frac{3}{4} \times 3\frac{3}{4}$ in.

Focal capacity, $18\frac{1}{2}$ in.

Minimum focus of lens accommodated, $8\frac{3}{8}$ in.

The Speed Graphic



THIS camera is designed for those requiring Focal Plane Shutter efficiency in a compact folding camera. The front of the Speed Graphic is large enough to take the high speed Anastigmat lenses, and sufficiently firm to prevent vibration when the bellows are extended to their full capacity. The camera is equipped with double extension movement.

The Speed Graphic is fitted with the Graflex Focal Plane Shutter, built into the body of the camera and giving exposures in the case of the $4\frac{1}{4} \times 3\frac{1}{4}$ from time to $\frac{1}{500}$ of a second, and as regards the larger sizes

to $\frac{1}{1000}$ of a second. The back is non-reversible. It takes the Graphic Holder for Portrait Film or the Premo Film Pack Adapter.

The camera is made of mahogany, covered with the best quality morocco leather. All exposed wood parts are ebonised, and the metal work is oxidised.

It includes the following adjustments:—
Rack and pinion for focussing. Rising front. Direct View Finder. Removable lens board and two tripod sockets.

For pictures $4\frac{1}{4} \times 3\frac{1}{4}$ in.

Dimensions, closed, $5\frac{3}{4} \times 2\frac{3}{4} \times 6\frac{1}{4}$ in.

Focal capacity, 10 in. Weight, $2\frac{1}{2}$ lbs.

Size of lens board, $2\frac{1}{2} \times 2\frac{1}{2}$ in.

For pictures 5×4 in.

Dimensions, closed, $6\frac{1}{2} \times 4 \times 6\frac{3}{8}$ in.

Focal capacity, 12 in. Weight, $3\frac{1}{2}$ lbs.

Size of lens board, $3\frac{1}{4} \times 3\frac{1}{4}$ in.

For pictures $5\frac{1}{2} \times 3\frac{1}{4}$ in.

Dimensions, closed, $7 \times 3\frac{1}{8} \times 7\frac{1}{2}$ in.

Focal capacity, 12 in. Weight, $3\frac{3}{4}$ lbs.

Size of lens board, $3\frac{1}{4} \times 3\frac{1}{4}$ in.

For pictures $6\frac{1}{2} \times 4\frac{3}{4}$ or 7×5 in.

Size of camera, $8\frac{3}{4} \times 3\frac{3}{4} \times 9\frac{3}{8}$ in.

Focal capacity, 16 in. Weight, $5\frac{1}{2}$ lbs.

Size of lens board, $3\frac{3}{4} \times 3\frac{3}{4}$ in.

Premo Cameras



PREMO Cameras are light and compact, very simple in operation, and unusually small for the size of pictures they take. Premo Film Packs combine Kodak quality with the quickest and easiest method of daylight loading. To load, the hinged back of the camera is opened, the Premo Film Pack dropped in, the back closed, and the safety cover, protecting the first exposure, is drawn. The films are changed for successive exposures by pulling out the consecutive, numbered tabs. The Film Pack is automatically rendered light tight when the last tab is drawn. To unload, the back is opened, and the Film Pack removed.

The Premo Film Pack Adapter converts plate cameras into daylight-loading film cameras, providing all the convenience afforded by the use of film.

One or more films may be removed from the Pack for development before the entire pack is exposed.

Premo Junior



THIS Camera for Film Pack requires no focussing and is always ready for use. Well made with carefully selected lenses.

No. 1.

For pictures $3\frac{1}{4} \times 2\frac{1}{4}$ in.

Capacity, 12 exposures without reloading.

Size of Camera, $3\frac{1}{8} \times 4\frac{1}{2} \times 5\frac{3}{4}$ in. Weight, 11 oz.

Shutter, Rotary Automatic with diaphragm stops.

Lens, Meniscus. Two Finders. Two tripod sockets.

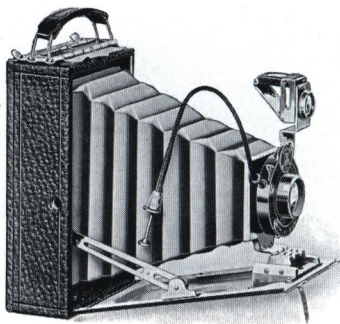
No. 1A

For pictures $4\frac{1}{4} \times 2\frac{1}{2}$ in.

Size of Camera, $3\frac{1}{2} \times 5\frac{1}{2} \times 5\frac{7}{8}$ in. Weight, 14 oz.

Lens, Meniscus Achromatic.

Premoette Junior



A NEAT little pocket Camera that loads quickly in daylight with the Premo Film Pack. After the folding bed is dropped, there is but one simple focussing adjustment. The lens produces negatives of such excellent quality that enlargements many times the size of the contact prints may be made.

For pictures $3\frac{1}{4} \times 2\frac{1}{4}$ in.

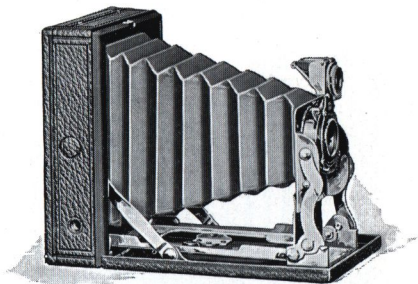
Capacity, 12 exposures without reloading.

Size of camera, $1\frac{1}{2} \times 3 \times 4\frac{3}{4}$ in. Weight 12 oz.

Finder, brilliant, collapsible, reversible.

Body, aluminium. Two tripod sockets.

Pocket Premo



EMBODIES extreme compactness and simplicity, the front automatically unfolding and locking rigidly in focussing position.

The lens is a Meniscus Achromatic of excellent quality, and the shutter, the Kodak Ball Bearing, with speeds of $\frac{1}{25}$ and $\frac{1}{50}$ of a second as well as bulb and time exposures.

The camera when closed has about the same dimensions as two $3\frac{1}{4} \times 2\frac{1}{4}$ Film Packs.

For pictures $3\frac{1}{4} \times 2\frac{1}{4}$ in.

Capacity, 12 exposures without reloading.

Size of Camera, $1\frac{1}{4} \times 3\frac{1}{4} \times 4\frac{9}{16}$ in. Weight, 18 oz.

Finder, Collapsible. Two tripod sockets.

Takes Premo Film Pack.

Premoette Senior



DESIGNED to provide for the most popular amateur sizes of pictures, the Premoette Senior also embodies the advantages of compactness, simplicity of operation, and standard lens equipments. It is supplied with R. R. Lens or the Kodak Anastigmat, *f.* 7.7, and is especially recommended with the Anastigmat. The definition and covering power of this lens is equal to any anastigmat made, and has a higher speed than any R. R. lens. Thus the amateur assures himself not only of microscopic definition, but also of a very great speed.

The shutter is the Kodak Ball Bearing with time and bulb actions and retarded speed of $\frac{1}{25}$, $\frac{1}{50}$ and $\frac{1}{100}$ seconds. It works with either cable or finger release, and is unusually accurate and reliable.

Premoette Seniors are covered with genuine leather of selected grain, metal parts are finished in nickel and black lacquer. When fitted with Kodak Portrait Attachment the pleasing proportions of the pictures make these cameras excellent for home portraiture.

No. 1A

For pictures $4\frac{1}{4} \times 2\frac{1}{2}$ in.
Capacity, 12 exposures without reloading.
Size of camera, $1\frac{7}{8} \times 3\frac{5}{8} \times 5\frac{5}{8}$ in. Weight, 21 oz.
Takes Premo Film Pack.

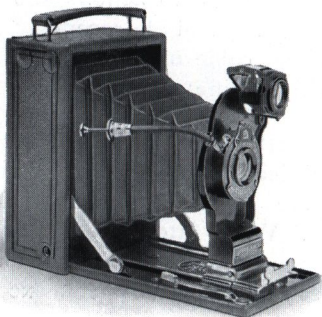
No. 3

For pictures $4\frac{1}{4} \times 3\frac{1}{4}$ in.
Capacity, 12 exposures without reloading.
Size of camera, $1\frac{15}{16} \times 4\frac{1}{16} \times 5\frac{5}{8}$ in. Weight, 22 oz.
Takes Premo Film Pack.

No. 3A

For pictures $5\frac{1}{2} \times 3\frac{1}{4}$ in.
Capacity, 12 exposures without reloading.
Size of camera, $2\frac{1}{4} \times 4\frac{1}{2} \times 7\frac{1}{8}$ in. Weight, 35 oz.
Takes Premo Film Pack.

Premo No. 12



IN the Premo No. 12 is offered a camera of really remarkable compactness, but so cleverly constructed as to offer every essential feature for making the best of pictures under all conditions of photography.

This camera is sold provided with Film Pack Adapter and Premo Film Pack, but it takes Eastman Graflex roll film with equal facility, for which latter a special roll holder is provided. It has a ground glass for accurate focussing and com-

position. It has two tripod sockets, reversible brilliant finder with revolving mask, and special focussing lever.

The camera is regularly fitted with Compur shutter, with speeds ranging from one second to $\frac{1}{250}$ of a second, and adjustments for bulb and time exposures, and with Kodak Anastigmat lens, $f.6.3$, $4\frac{5}{8}$ in. focus. It can also be supplied with other anastigmat lenses, all of the proper focal length for the size of picture.

The Premo No. 12 is also offered with either R. R. or Kodak Anastigmat, $f.7.7$ lens with Kodak Ball Bearing Shutter, making an exceptionally attractive outfit at a low price.

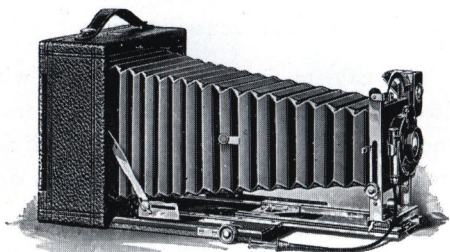
For pictures $3\frac{1}{4} \times 2\frac{1}{4}$ in.

Capacity, 1 Portrait Film, or 12 Film Pack exposures without reloading.

Size of camera, $1\frac{5}{8} \times 3\frac{1}{4} \times 4\frac{5}{8}$ in. Weight 24 oz.

Box, aluminium. Bed, aluminium with special lever focussing device. Brilliant, Reversible Finder. Two tripod sockets.

Premo No. 9



WITH its complete equipment and accurate, convenient mechanical adjustments, the No. 9 is a camera of wide capabilities and superior quality.

The bellows has sufficient draw to permit the use of the single lens combination, or a telephoto attachment of several magnifications. The extension plate is actuated by rack and pinion provided with a simple locking device.

The standard is very rigid, and incorporates a rising and falling front of great latitude.

The lens board is removable, and the back is reversible.

The camera is regularly fitted with Planatograph lens and Kodak Ball Bearing shutter, but it can also be furnished with Bausch and Lomb Kodak Anastigmat lens *f*.6.3 and Compur shutter. The 5×4 and $5\frac{1}{2} \times 3\frac{1}{4}$ in. models take also the Kodak Anastigmat lens *f*. 7.7 and B.B. shutter, or the Kodak Anastigmat lens *f*.6.3 and Compur shutter.

For pictures 5×4 in.

Bellows Extension, 13 in.

Capacity, 12 film pack or 2 Portrait Film exposures without reloading.

Size of camera, $3 \times 7 \times 7$ in. Weight, 63 oz.

For pictures $5\frac{1}{2} \times 3\frac{1}{4}$ in.

Bellows Extension, 13 in.

Capacity, 12 film pack or 2 Portrait Film exposures without reloading.

Size of camera, $3 \times 7 \times 7$ in. Weight, 63 oz.

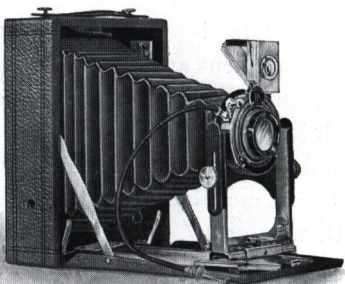
For pictures $6\frac{1}{2} \times 4\frac{3}{4}$ or 7×5 in.

Bellows Extension, $15\frac{1}{4}$ in.

Capacity, 12 film pack or 2 Portrait Film exposures without reloading.

Size of camera, $2\frac{7}{8} \times 8\frac{1}{4} \times 8\frac{1}{4}$ in. Weight, 76 oz.

Premo No. 8



AN inexpensive reliable camera that is instantly converted by the Premo Film Pack Adapter into a daylight-loading film camera with the advantage of ground glass focussing. Has rising and falling front. Is covered in leather, metal parts nickelled.

For pictures 5×4 in.

Capacity, 12 film pack or 2 Portrait film exposures.
Size of camera, $2 \times 5\frac{1}{4} \times 6\frac{1}{2}$ in. Weight, 30 oz.

For pictures $5\frac{1}{2} \times 3\frac{1}{4}$ in.

Capacity, 12 film pack or 2 Portrait film exposures.
Size of camera, $2 \times 5 \times 7\frac{1}{4}$ in. Weight, 34 oz.

For pictures $6\frac{1}{2} \times 4\frac{3}{4}$ or 7×5 in.

Capacity, 12 film pack or 2 Portrait film exposures.
Size of camera, $2\frac{1}{4} \times 6\frac{1}{4} \times 8\frac{1}{2}$ in. Weight, 42 oz.

Kodak Film Tank



Every step in development may be performed in daylight. It is so simple as to be readily understood even by the novice, who can get as good results from it as can an expert by any known method.

No. 2 Brownie Developing Box



A metal box and cover, 15 inches long, to take a roll of No. 1, No. 2 or No. 2 Folding Autographic Brownie film in one loop.

Premo Film Pack Tank



THE Premo Film Pack Tank assures the veriest beginner that every pack of films placed in the tank, where the simple directions are implicitly followed, will come out developed perfectly. No experience is required. It places the novice upon the same plane in development as the expert.

Eastman Plate Tank

To secure the best results, plates should be developed in the Eastman Plate Tank.

Loaded with plates in the dark room, it can be brought out into any light for development.



Complete Outfits (Daylight)



The Kodak Outfit and The Brownie Outfit

CONTAIN Kodak or Brownie, Film, Film Tank, and everything necessary for successfully developing exposures and for making finished prints from negatives by the Kodak Daylight Method. No dark room is required.

Complete Outfits—Continued (Daylight)

Nos. 0 & 2 Brownie Junior Outfits

Contain Brownie Camera, Film, Brownie Developing Box, and everything necessary for developing exposures and making prints from negatives.

Vest Pocket Autographic Kodak Outfit

Contains Kodak in Leather Case, Film, Vest Pocket Kodak Film Tank, Slip-in Album for 12 prints, and everything necessary for developing exposures and making prints from negatives.

A.B.C. Developing and Printing Outfit

For developing (in the dark room) Kodak Film or Eastman Portrait Film negatives, and for making and finishing a number of prints from these.

Brownie Enlarging Camera

A LIGHT-TIGHT Cone, taking a negative at one end and a sheet of Bromide or Velox paper at the other. Its characteristic is its great simplicity. It is folded flat for packing or carrying.



No. 2 Brownie Enlarging Camera

for 7×5 enlargements from $3\frac{1}{4} \times 2\frac{1}{4}$ negatives.

No. 3 Brownie Enlarging Camera,

for $8\frac{1}{2} \times 6\frac{1}{2}$ enlargements from $4\frac{1}{4} \times 3\frac{1}{4}$ negatives.

No. 3A Brownie Enlarging Camera,

for 11×7 enlargements from $5\frac{1}{2} \times 3\frac{1}{4}$ negatives, and $10\frac{1}{2} \times 6\frac{1}{4}$ from $4\frac{7}{8} \times 2\frac{7}{8}$ negatives.

No. 4 Brownie Enlarging Camera,

for 10×8 , $10 \times 6\frac{3}{8}$ and $9\frac{3}{8} \times 5\frac{3}{8}$ enlargements from 5×4 , $5\frac{1}{2} \times 3\frac{1}{4}$ and $4\frac{7}{8} \times 2\frac{7}{8}$ negatives.

No. 2 Brownie

Post Card Enlarging Camera

A non-collapsible cone for post card size enlargements from $3\frac{1}{4} \times 2\frac{1}{2}$ in. negatives.

Vest Pocket Enlarging Camera

Of same type as above, making post card size enlargements, $5\frac{1}{2} \times 3\frac{1}{4}$ in. from $2\frac{1}{2} \times 1\frac{5}{8}$ in. negatives.

Tripods

Kodak Metal Tripod

An ideal light, compact and rigid tripod with telescopic legs of brass tubing—lower sections nickelled—upper ones enamelled.



No.	Sections	Closed in.	Extended in.	Weight oz.
0	3	15½	39½	15
1	4	15	48½	24½
2	5	13½	49½	25
1C	4	15¼	49⅞	25½
2C	5	13¼	49⅞	26
6	6	11⅜	40	24

Black Leather Case for Kodak
Metal Tripod (any model)

Wooden Tripods

Two-fold. Adjustable legs.

	Closed in.	Extended in.	Weight oz.
Flexo	29	54	16
Bull's-Eye	23½	43	20½

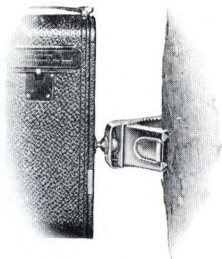
Three-fold.

Eastman Standard, telescopic legs.
Closed, 21 in. Extended, 54 in. Weight, 18 oz.

Tripod Attachments

The Kodapod

A little metal attachment with strong jaws for fastening the camera to a tree, fence or other object. Easily carried in the pocket.



The Optipod

This device enables one to attach a camera with equal ease to a tripod, table, chair, motor car, or any firm object. Further, the camera can be tilted to any angle by means of the ball and socket head.

Tripod Adapter

For Vest Pocket Kodak

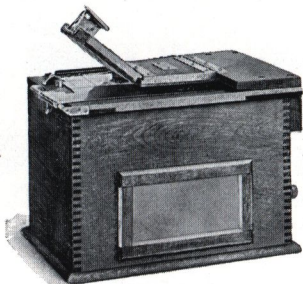
This adapter is made of metal and slips easily on to the lens support of the Vest Pocket Kodak. It has two sockets, and so enables the Kodak to be used on a tripod for both vertical and horizontal pictures.

Tripod Adapter

For Nos. 0, 2, and 2A Brownies

This little metal adapter enables one to fix a small Brownie easily on to a tripod for both vertical and horizontal pictures.

Kodak Amateur Printer



THE Kodak Amateur Printer enables the amateur to make any number of uniformly masked prints from the same negative—and quickly—with Velox or any developing-out paper. The Printer consists of a box with a removable top, and in it a glass window through which the printing is done. Prints may be made with white margins, any size from $2\frac{1}{2} \times 1\frac{5}{8}$ up to and including 5×4 and $5\frac{1}{2} \times 3\frac{1}{4}$ in. Within the box a red electric lamp is required to permit of adjusting the negative and paper, and also a 16 c.p. electric lamp, which is automatically turned on when the hinged frame is closed to make the exposure.

The Printer is supplied complete, without lamps, but it includes $5\frac{1}{2}$ ft. of electric light cord and socket.

Kodak Film

Non-Curling. Orthochromatic. Non-Halation. Very rapid. May be developed either in the dark room, or by the Kodak Film Tank in any light.

To get Autographic results, an Autographic Kodak and Autographic Film must be used, but Autographic Kodaks may be used with N.C. Cartridges, and other models of Kodaks may be used with Autographic Cartridges.

Eastman Portrait Film

This film produces portrait negatives of surpassingly fine quality and most unusual gradation. The emulsion is of extremely fine grain, making the negatives particularly fine for enlarging.

Eastman Portrait Films are practically non-halation. They are so thin and so free from glare, that there is no chance for sufficient light reflection to cause the halation effect. They are non-curling, unbreakable, light in weight, and require very little room for storage. These films can be used in ordinary dark slides simply by being kept in position by a piece of dark cardboard. The best method, however, is by means of the Eastman Portrait Film Sheath.

Several films may be developed in the same tray at the same time, without danger of scratching or breakage. They can also be printed from either side.

Eastman Portrait Film is made in two speeds: "Par Speed" and "Super Speed." The latter is twice the speed of the "Par."

Solio Printing-Out Paper

The Standard Gelatino-Chloride Printing-out Paper. Rapid, rich in silver, gives superb tones. In Glossy (White, Pink and Mauve), Matte and Velvet.

Self-Toning Solio Paper

Simple to use, uniform results in warm or cold tones. Prints obtained of finest colour. In Glossy and Matte.

Velox Paper

Prints in day or artificial light, no dark room for developing, extremely simple.

Vigorous in "Carbon" (Dead Matt), "Art" (Satin Surface), "Glossy" (Enamelled).

Soft in "Art" (Satin Surface), "Glossy" (enamelled), "Special Portrait" (nearly Matt), "Special Carbon" (Dead Matt).

Bromide Paper

For contact printing by artificial light; for enlarging by day or artificial light. Developed in dark room. **Permanent**, "Rapid" or "Slow" (Rapid Smooth, Slow Smooth, Rapid Rough). **Platino Matte**, Rapid Smooth, Slow Smooth, Rapid Rough. **Royal**, Rapid. **White Royal**, Rapid. **Cream**, Rapid Smooth. **Nikko**, Glossy, Rapid (in Mauve-White and Pink). **Velvet**, Rapid. **Contrast**, Glossy, Matte and Velvet.

Transferotype Paper

For making Bromide positives transferable to glass, plaques, etc.

Kodak Portrait Attachment

Pocket cameras are not made to work close up to the subject. The Kodak Portrait Attachment so alters the focus, that the camera can be placed close to the subject and a large image secured.

When ordering, please specify the model of the camera, the lens and the shutter.



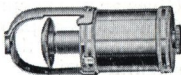
Kodak Sky Filters and Colour Filters

The Sky Filter equalizes the difference of light between the sky and the foreground in landscape photography, the upper half being stained yellow to relieve the brightness from the sky.

The Colour Filter is of great value in outdoor photography, holding back the strong blue and violet rays, affording the weaker colours time to record.

Kodak Self Timer

Automatically releases the shutter and permits the person who takes the picture to be one of the group, or he can take his own portrait by the addition of the Portrait Attachment whenever the light is strong enough for a snap-shot.



Kodak Leather Cases

In finest quality black or tan leather, long adjustable strap, nickelled locks with spring-back hasp. Brownie cases have nickelled clasps.

Tan Mail Waterproof Canvas Cases

In best quality tan mail waterproof. Very strong. Leather bound, with both long and short straps.

Kodak Film Storage Album



In art linen with glove button fastener. Contains 100 numbered transparent envelopes with index.

Made in 7 models to suit Kodak Films of all sizes.

“How to make Good Pictures” The Kodak Book of Practical Instruction

If a good picture is not made every time, this book will explain the reason of the failure and how it can be obviated. Or, in the case of good pictures, it will tell how better ones can be made still more easily.

Clear, concise and profusely illustrated.

“The Fundamentals of Photography”

Gives an elementary account of the theoretical foundations of photography in language that can be followed by those who have had no specialized scientific training.

Kodak Tested Chemicals



This seal indicates that the product has been scientifically tested in the Kodak laboratories, and constitutes a guarantee of the highest quality. Chemicals are put up in Glass Cartridges for travelling, in Packets for mixing when required, and in Solutions for use at any time.

Kodak Maskit Printing Frame

Overcomes the difficulty of the negative and mask slipping on the glass, and secures prints with a uniform white margin.



Eastman Non-Slip Printing Frame

Strong and compact, with device for preventing the print from slipping while being examined in the frame. Made of polished wood with brass springs.

Eastman Kodaloid Printing Mask

For giving a white edge to Velox and Bromide prints.

Non-actinic yet perfectly transparent, orange in colour, and fully protects the margin of the print.

Kodak Print Trimming Board



Made of hard wood, with natural finish, fine quality steel blade and fitted with rule.

Kodak Thermometer Stirring Rod

A glass stirring rod enclosing an accurate thermometer. Has flat end for crushing purposes.

Eastman Thermometer



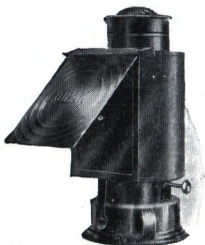
Especially valuable in tank or tray development. Has hook for suspending, and curved back to fit inside Tank.

Flexible Rubber Tray

A portable tray which fits over the bottom of the 3½ in. Kodak Film Tank Box. Will fix or wash two 12-exposure spools at one time, and is graduated for 32 or 64 ounces of solution.

Kodak Dark Room Lamp

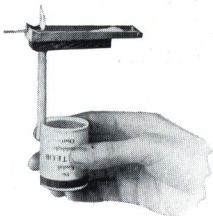
Is oil burning and is fitted with both ruby and orange glass. It has an unusually broad wick regulated from the outside, and gives a soft, steady light.



Wratten Dark Room Lamp

Gives the maximum illumination with the minimum risk of fog, and none but reflected light is allowed to pass. Is made for oil, for gas or for electricity, and always keeps cool. The standard lamp is fitted with a 10 × 8 safelight, but a smaller size is also sold fitted with a 7 × 5 safelight.

Kodak Amateur Flashlight Outfit



Consists of Flashlamp, Holder, etc., and sufficient Flash-powder for 20-25 exposures. Very simple and economical.

Kodak Amateur Flashpowder

Prepared for use with above outfit. Does not absorb damp. Certain in firing, practically noiseless.

Magnesium Ribbon Holder

Comprises a magazine for storing magnesium ribbon, a holder for burning it, and a means of measuring lengths of ribbon.



Velox Water Colour Stamps



For the colouring of prints, these colours are the simplest of all to use, working especially well with Velox.

In 12 sheets of colours, each sheet divided by perforations into 26 stamps, which are torn off for use. Outfit consists of book of 12 colours, 3 brushes and palette, in cardboard case.

Kodak Film Clip

A non-corrodible metal clip 2 inches wide with exceptionally firm grip. Suitable for large or small film.



Kodak Junior Film Clip No. 1

Most practical for tray development or drying of films. Has two teeth in to prevent film from slipping.



Eastman Film Developing Clips

Heavily nickelled, in pairs, 7 in., 5 in. and 3½ in. ea.

Slip-in Albums

Vest Pocket Kodak

For Vest Pocket Autographic Kodak and No. 0 Brownie prints. A neat little album, small enough to slip into the waistcoat pocket, bound in green art cloth covers, with darker green mat paper leaves.

No. 1 Brownie

A tasteful and well-made Album. Strongly bound in art cloth covers, brown or green leaves, white embossed relief around openings.



Slip-in Albums—*continued*

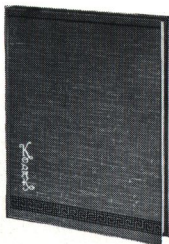
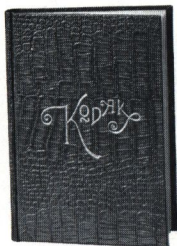


Kodak Series B

Bound in attractive shades of art canvas cloth with leaves of creamy white tint. India tint border around openings.

Kodak Series C

Bound in dark green crocodile cloth, gold lettering, pearl grey leaves with darker grey tint around openings.



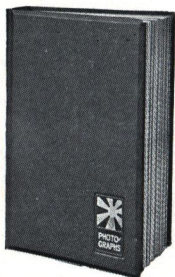
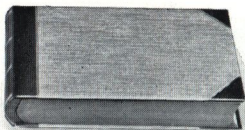
Kodak Series D

Dainty Album, bound in art cloth, gold lettering, cream white leaves, with India tint around openings.

Slip-in Albums—*continued*

Kodak Series H

A handsome Album, bound in half-roan and art vellum, gilt finish. In brown with brown leaves, or green with green leaves.



“Newlyn”

Cloth covers with bevelled edges, blocked in gold. Leaves of mat art card, dark green, brown or grey, with white relief round openings.

Paste-on Albums **Regent Flexible**

Contains 50 thick brown art paper leaves with a guard between each. Bound in blue-black limp imitation leather. Prints can be attached by left hand edges.

“Jazz”

(On the Simplex principle)

Plain card pages on which prints are fixed by gummed paper, and covering sheets of mat art paper with openings of various sizes. In assorted leaves in brown, grey and green.



KODAK LIMITED,

Kingsway, LONDON, W.C.2

115 Oxford St., W.1 184-186 Regent St., W.1
40 Strand, W.C.2 59 Brompton Rd., S.W.3
60 Cheapside, E.C.2 1-2 Gracechurch St., E.C.3

Liverpool : 45 Church St.

Birmingham : 45 Corporation St.

Newcastle-on-Tyne : 34 Grainger St.

Glasgow : 36-40 West Nile St.

Dublin : 89 Grafton St.