



PREMO

Go Prepared for Premo Pictures.

On your vacation, on your outings, in all the good times which the summer has in store for you, there are pictures which will make each pleasurable occasion more pleasant still.

And a Premo camera is so easy to load and operate that you can make such pictures yourself without the need of skill or experience, so light and compact as to go with you everywhere—unobtrusively, so carefully equipped and tested as to take pictures of superior quality.

Premos are made for plates, for film packs and for cartridge film. There is one to suit any photographic requirement. The limits of this small booklet will not allow us to tell you the full Premo story, nor even to describe every model we make. Should you wish further information before making your selection, ask your dealer for a copy of the general Premo catalogue, or write us and we will send you one by return mail, postpaid.

ROCHESTER OPTICAL DIVISION,
EASTMAN KODAK COMPANY,
ROCHESTER, N. Y.



Premo Junior Cameras

Inexpensive but well made, and reliable in every respect, these simple cameras are capable of producing good pictures in all ordinary work such as portraiture, snap shots, average landscapes and the like.

They are all fitted with tested lenses and automatic shutters. They are substantially made, covered with imitation leather and are neat and attractive in appearance.

To make a picture with a Premo Jr. is a matter of seconds only. No focusing, no estimating of distances is necessary.

To load, open the back in any light, drop in Premo Film Pack and close the back.

Then set the shutter for time or instantaneous exposure as required by the subject. This is accomplished by merely moving a lever up or down.

Now glance at the finder, compose the picture, press a lever and the exposure is made.

Good enough to satisfy the many grown-up amateurs who are using them, these are really ideal cameras for boys and girls, by reason of their low cost, substantial construction and extremely simple operation.

S P E C I F I C A T I O N S

Capacity—12 exposures without reloading.

Size of Camera—No. 0, $2\frac{1}{4} \times 3\frac{5}{8} \times 5\frac{1}{4}$ in.; No. 1, $3\frac{1}{8} \times 4\frac{1}{2} \times 5\frac{3}{4}$ in.; No. 1A, $3\frac{1}{2} \times 5\frac{1}{2} \times 5\frac{7}{8}$ in.; No. 3, $4 \times 5\frac{1}{2} \times 5\frac{3}{4}$ in.

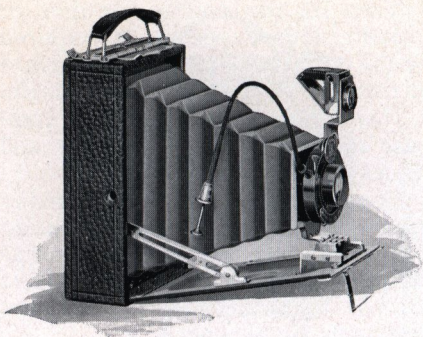
Weight—No. 0, 7 ounces; No. 1, 11 ounces; No. 1A, 14 ounces; No. 3, 20 ounces.

Shutters—Rotary Automatic, all excepting the No. 0, with diaphragm stops. *Lens*—No. 0 and No. 1 Meniscus; No. 1A and 3, Meniscus Achromatic.

Finders—Two. *Tripod Sockets*—No. 0, none; Nos. 1, 1A and 3, two.

P R I C E S

	No. 0 $1\frac{3}{4} \times 2\frac{3}{8}$	No. 1 $2\frac{1}{4} \times 3\frac{1}{4}$	No. 1A $2\frac{1}{2} \times 4\frac{1}{8}$	No. 3 $3\frac{3}{4} \times 4\frac{1}{4}$
Premo Junior. Meniscus Lens, Automatic Shutter,	\$1.50	\$2.00		
Ditto. with Meniscus Achromatic Lens, . . .			\$3.00	\$4.00
Carrying Case,60	.75	.85	1.10
Premo Film Pack (12 exposures)25	.40	.50	.70
Kodak Portrait Attachment,50	.50	.50



Premoette Juniors

In the Premoette Juniors are offered the smallest possible practical cameras for two of the most popular sizes of amateur pictures. They are just a trifle larger than the pictures they make, and they are so easy to operate, so well manufactured, so carefully equipped and tested that the merest beginner in photography, by using a Premoette Jr., can get the best of pictures from the start.

The regular equipment is the Kodak Ball Bearing shutter and meniscus achromatic lens. In addition, it is furnished with rapid rectilinear lens, and for those who want the microscopic definition of the anastigmat at a moderate price, with

Kodak Anastigmat lens *f*.7.7. For those who want excessive speed, combined with anastigmatic definition and the highest degree of compactness, we offer the Premoette Jr. Special. This model is fitted with Bausch & Lomb Kodak Anastigmat lens, *f*.6.3, and Compound Shutter and is finished in exceptionally handsome style.

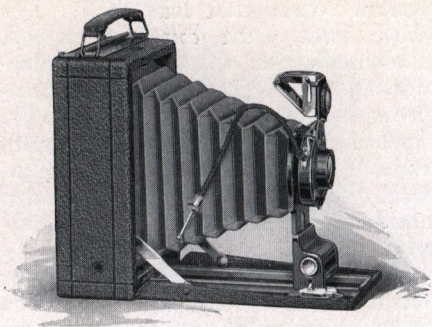
The No. 1 regular model has finger release shutter only, the No. 1A is fitted with cable release with all equipments. Illustration shows the No. 1A.

SPECIFICATIONS

Premoette Junior Regular. Capacity—12 film pack exposures without reloading. *Dimensions*—No. 1, $1\frac{1}{2} \times 3 \times 4\frac{3}{4}$ in.; No. 1A, $1\frac{3}{4} \times 3\frac{1}{4} \times 5\frac{3}{4}$ in. *Weight*—No. 1, 12 ounces; No. 1A, 18 ounces. *Lens*—Meniscus Achromatic. *Shutter*—Kodak Ball Bearing. *Finder*—Collapsible, reversible, brilliant. *Tripod Sockets*—Two. *For specifications of Premoette Jr. Special, see general Premo Catalogue.*

PRICES

	No. 1 $2\frac{1}{4} \times 3\frac{1}{4}$	No. 1A $2\frac{1}{2} \times 4\frac{1}{4}$
Premoette Jr. with Meniscus Achromatic Lens and Kodak Ball Bearing Shutter,	\$ 5.00	\$ 7 00
Ditto, with Planatograph Lens,	7.00	9.00
Ditto, with Kodak Anastigmat Lens, <i>f</i> .7.7,	12.00	14.00
Premoette Jr. Special with Compound Shutter and Bausch & Lomb Kodak Anastigmat Lens, <i>f</i> .6.3 (Formerly listed as Zeiss-Kodak Anastigmat)	36.00	40.00
Carrying Case (Regular),	1.25	1.50
Premo Film Pack (12 exposures),40	.50
Kodak Portrait Attachment,50	.50



Premoette Senior

The Premoette Sr. is designed to offer the amateur a compact, easily operated camera for the three larger standard sizes of amateur pictures at as low a price as is consistent with quality and dependable results.

It is a common sense camera without frills but of great efficiency, for the general run of amateur work. It is supplied with either R. R. lens or Kodak Anastigmat, $f.7.7$, being especially recommended with the anastigmat. This lens, for definition and covering power, is the equal of any anastigmat made, and has a higher speed than any R. R. lens. Thus in getting this camera the amateur assures himself not only of the

microscopic definition of the finest anastigmat, but also of a greater speed than is possible with the ordinarily equipped camera. And when it is considered that a perfectly reliable camera with these advantages can be bought for from \$15.00 to \$17.50, the exceptional value is apparent.

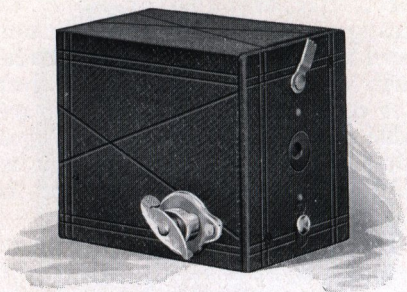
The simple design of the camera has not only enabled us to keep the price of the camera low, but also to offer a camera which, in compactness, light weight, ease of operating and all-around simplicity, has a considerable margin over the average type of camera.

SPECIFICATIONS

Capacity—12 exposures. *Box*—Seasoned wood. *Bed and Back*—Aluminum. *Dimensions*— $2\frac{1}{2} \times 4\frac{1}{4}$, $1\frac{7}{8} \times 3\frac{5}{8} \times 5\frac{5}{8}$ in.; 3A, $3\frac{1}{4} \times 5\frac{1}{2}$, $2\frac{1}{4} \times 4\frac{1}{2} \times 7\frac{1}{8}$ in. *Weight*— $2\frac{1}{2} \times 4\frac{1}{4}$, 21 ounces; 3A, $3\frac{1}{4} \times 5\frac{1}{2}$, 35 ounces. *Lens*—Kodak Anastigmat, *f*.7.7. *Shutter*—Kodak Ball Bearing, with cable release. *Tripod Sockets*—Two. *Finder*—Reversible, brilliant, collapsible. *Automatic standard clamp*. *Automatic focusing lock*.

PRICES

	$2\frac{1}{2} \times 4\frac{1}{4}$	$3\frac{1}{4} \times 4\frac{1}{4}$	3A $3\frac{1}{4} \times 5\frac{1}{2}$
Promoette Sr. with R. R. Lens and Kodak Ball Bearing Shutter,	\$10 00	\$10.00	\$12.50
Ditto with Kodak Anastigmat Lens, <i>f</i> .7.7	15.00	15.00	17.50
Sole Leather Carrying Case,	1.75	1.75	2.25
Premo Film Pack (12 exposures)	.50	.70	.80
Kodak Portrait Attachment,	.50	.50	.50



No. 00 Cartridge Premo

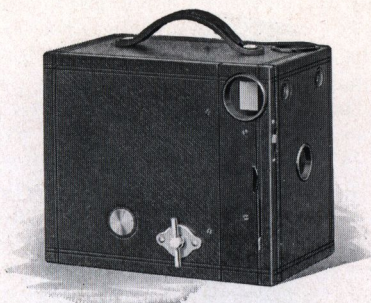
Made primarily for the children, and so simple that any boy or girl can operate it, this camera is in no sense a toy, but will make satisfactory pictures within its scope for a person of any age. It introduces a new size picture— $1\frac{1}{4} \times 1\frac{3}{4}$ inches—and a new price standard for a dependable camera. Has automatic shutter and tested meniscus lens of the best quality.

SPECIFICATIONS

For Rectangular Pictures— $1\frac{1}{4} \times 1\frac{3}{4}$ inches.
Capacity—6 exposures without reloading.
Size of Camera— $2 \times 2\frac{5}{8} \times 3\frac{1}{8}$ in.
Lens—Meniscus, $2\frac{1}{4}$ -inch focus. *Shutter*—Automatic for time and snap shot exposures.

PRICES

Cartridge Premo No. 00, Meniscus Lens and Automatic Shutter,	\$.75
Eastman Film Cartridge, 6 exposures, No. 35,10



Cartridge Premos Nos. 2 and 2A

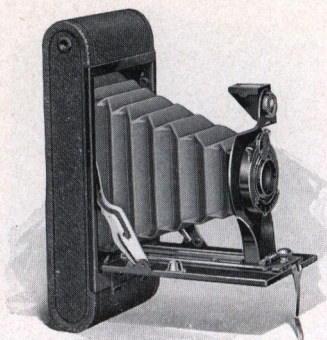
These are cameras of the fixed focus type, appealing especially to those who wish to make picture on roll film in the easiest way and at the minimum of expense.

SPECIFICATIONS

For Rectangular Pictures—No. 2, $2\frac{1}{4} \times 3\frac{1}{4}$ in.; No. 2A, $2\frac{1}{2} \times 4\frac{1}{4}$ in. *Capacity*—No. 2, 6 exposures; No. 2A, 12 exposures. *Size of Camera*—No. 2, $5\frac{5}{8} \times 4 \times 3\frac{1}{4}$ in.; No. 2A, $3\frac{7}{8} \times 5\frac{1}{8} \times 6\frac{1}{8}$ in. *Weight*—No. 2, 13 ounces; No. 2A, 21 ounces. *Lens*—No. 2, Meniscus; No. 2A, Meniscus Achromatic. *Shutter*—Eastman Rotary, with three stops. *Finders*—Two.

PRICES

	No. 2	No. 2A
Cartridge Premo Camera,	\$2.00	\$3.00
Carrying Case, with shoulder strap, . .	.85	.85
N. C. Film Cartridge, 12 ex. (No. 116), . .		.50
Ditto, 6 exposures (No. 120 for No. 2; No. 116 for No. 2A)20	.25
Kodak Portrait Attachment,50	.50



Folding Cartridge Premos Nos. 2 and 2A

These are very compact little roll film cameras with rounded ends, graceful in all their lines, and slipping readily into the pocket. Alike in general appearance and operation, they differ in the size of the pictures they make and slightly in lens and shutter equipment.

These Premos load with regular Eastman N. C. film. They are constructed on a new and very simple principle for loading and unloading in daylight, and as the film may be developed in the Kodak Film Tank, no dark room is necessary for any step in the photographic process.

In making these cameras the aim has been to produce as simple, easily workable roll film cameras as can be made. There is no complicated mechanism or adjustment, just a simple camera for every-day work, properly equipped for amateur picture-making under all ordinary conditions where the average amateur would care to use a camera. They are neatly and carefully finished, and covered with a serviceable, attractive grade of imitation leather.

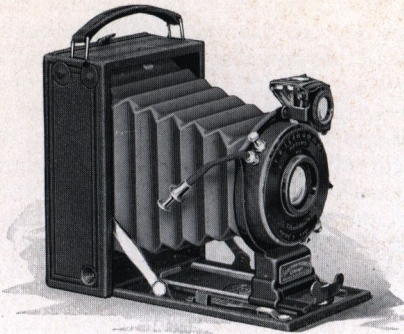
These are excellent cameras for home portraiture when fitted with Kodak Portrait Attachment.

SPECIFICATIONS

Size No. 2 for $2\frac{1}{4} \times 3\frac{1}{4}$ pictures, *No. 2A*, $2\frac{1}{2} \times 4\frac{1}{4}$. *Capacity*—No. 2, 6 exposures without reloading; No. 2A, 12. *Size of Camera*—No. 2, $1\frac{1}{4} \times 3\frac{1}{8} \times 6\frac{1}{2}$ in.; No. 2A, $1\frac{7}{8} \times 3\frac{3}{8} \times 7\frac{7}{8}$ in. *Weight*—No. 2, 19 ounces; No. 2A, 25 ounces. *Lens*—Meniscus Achromatic. *Shutter*—Kodak Ball Bearing. Reversible finder, two tripod sockets, automatic focusing lock, black leather bellows.

PRICES

	No. 2	No. 2A
Folding Cartridge Premo with single lens and Kodak Ball Bearing Shutter,	\$5.00	7.00
Ditto, with R. R. Lens.	6.50	9.00
Cartridge Premo Carrying Case,	1 00	1.10
N. C. Film Cartridge, 12 exposures (No. 116)50
Ditto, 6 exposures (No. 120 for No. 2, No. 116 for No. 2A)20	.25
Kodak Portrait Attachment50	.50



Premo No. 12

In the Premo No. 12 is offered a camera of really remarkable compactness, but so cleverly constructed as to offer every essential feature for making the best of pictures under all conditions of photography, be it easy or difficult.

The Premo No. 12 takes films or plates with equal facility, it has a ground glass for accurate focusing and composition, or it may, of course, be used with focusing scale. It has two tripod sockets, reversible brilliant finder with revolving mask, and special focusing lever.

The camera is regularly fitted with Optimo shutter, and Bausch & Lomb Kodak Anastigmat lens, *f*.6.3. It can

also be supplied with other anastigmat lenses, all of the proper focal length for the size of picture.

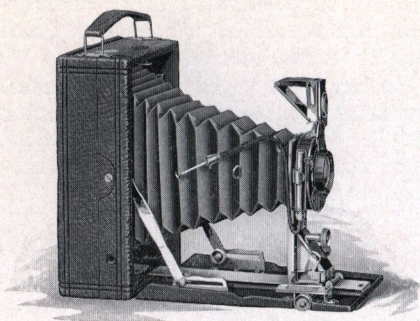
In addition to high speed lenses, the camera is also offered with either R. R. or Kodak Anastigmat *f*.7.7 lens, making an exceptionally attractive outfit at a low price.

S P E C I F I C A T I O N S

Size of Picture— $2\frac{1}{4} \times 3\frac{1}{4}$. *Capacity*—12 film or one plate exposure. *Box*—Aluminum. *Bed*—Aluminum, with special lever focusing device. *Finder*—Reversible, with revolving mask. *Tripod Sockets*—Two. *Lens*—Bausch & Lomb Kodak Anastigmat, *f*.6.3, or other lenses as per price list. *Shutter*—Optimo or Kodak Ball Bearing as per price list. *Dimensions*— $1\frac{5}{8} \times 3\frac{1}{4} \times 4\frac{5}{8}$ in. *Weight*—24 ounces.

P R I C E S

Premo No. 12 with Optimo Shutter and Bausch & Lomb Kodak Anastigmat Lens, <i>f</i> . 6.3 (Formerly listed as Zeiss Kodak Anastigmat), including Film Pack Adapter and one Plate Holder,	$2\frac{1}{4} \times 3\frac{1}{4}$ \$45.00
Ditto, with Bausch & Lomb Special Anastigmat Lens, <i>f</i> . 6.3. (Formerly listed as B. & L. Anastigmat),	36.00
Ditto, with Kodak Anastigmat Lens, <i>f</i> . 6.3	40.00
Ditto, with Bausch & Lomb Tessar, Ser. IIb Lens, <i>f</i> . 6.3 (Formerly listed as B. & L. Zeiss Tessar),	54.00
Ditto, with Bausch & Lomb Tessar. Ser. Ic Lens, <i>f</i> . 4.5 (Formerly listed as B. & L. Zeiss Tessar),	56.00
Ditto, with Kodak Ball Bearing Shutter and R. R. Lens.	15.00
Ditto, with Kodak Anastigmat Lens, <i>f</i> . 7.7,	20.00
Carrying Case, grain leather, velvet lined	2.75
Single Plate Holder, each,50
Premo Film Pack, 12 exposures,40



Filmplate Premo

The underlying idea of this model is to supply a camera equipped for the most serious work in as compact and convenient form as possible. It takes films or plates with equal facility and offers the ground glass focusing advantage with either.

The shutter is the Kodak Automatic, fitted with Kodak Autotime Scale. The lens is the Planatograph, and the camera is fitted with rising and sliding front, rack and pinion for focusing, and swing bed.

With accurate focusing scale and brilliant finder, the Filmplate Premo is a splendid snap shot instrument. For exacting work, the ground glass is instantly available for composition

or focusing, whether films or plates are being used.

With all these advantages there is nothing bulky or cumbersome or complicated about the Filmplate Premo. It is as compact and as easily carried as the average camera for films alone. It is so simple to understand and operate that anyone who can read the instructions which come with the camera can at once start in to make good pictures, without any trouble at all.

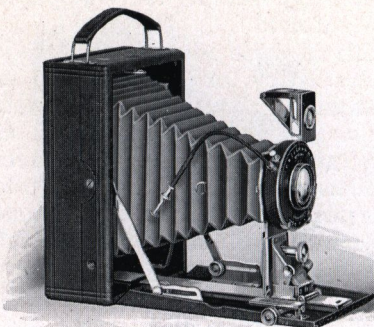
Covered with selected grain leather, metal parts nickeled. An attractive, well made camera in every respect.

SPECIFICATIONS

Capacity—12 film or 2 plate exposures. *Box*—Cherry. *Bed*—Aluminum. Rack and pinion for fine focusing. *Front*—Rising and sliding. *Finder*—Reversible, brilliant, collapsible. *Tripod Sockets*—two. *Lens*—Planatograph. *Shutter*—Kodak Automatic. *Dimensions*— $3\frac{1}{4} \times 4\frac{1}{4}$, $2\frac{1}{4} \times 4\frac{1}{8} \times 5\frac{3}{8}$ in.; 3A, ($3\frac{1}{4} \times 5\frac{1}{2}$), $2\frac{3}{8} \times 4\frac{3}{4} \times 7\frac{1}{8}$ in. *Weight*— $3\frac{1}{4} \times 4\frac{1}{4}$, 30 ounces; 3A ($3\frac{1}{4} \times 5\frac{1}{2}$), 37 ounces. Automatic Standard Clamp.

PRICES

	$3\frac{1}{4} \times 4\frac{1}{4}$	3A $3\frac{1}{4} \times 5\frac{1}{2}$
Filmplate Premo with Planatograph		
Lens, Kodak Auto. Shutter, Plate		
Holder and Film Pack Adapter, .	\$22.50	\$25.00
Carrying Case,	2.00	2.50
Premo Film Pack,70	.80
Kodak Portrait Attachment,50	.50



Filmlate Premo *Special*

For those who want the highest possible efficiency in a hand camera, combined with compactness and convenience, this is truly the ideal camera.

It is fully equipped for making good pictures under adverse as well as ordinary conditions.

It is fitted with every desirable mechanical convenience. It has a fast, fully corrected lens—the B. & L. Kodak Anastigmat, *f*.6.3, specially designed for hand camera work, and a high speed shutter, the Compound, that works with great accuracy and precision.

This equipment not only provides

a very high speed for rapidly moving objects, but it enables the operator to make pictures on dark days, indoors, and under generally unfavorable light conditions, where absolute failure would result from the use of the ordinarily equipped camera.

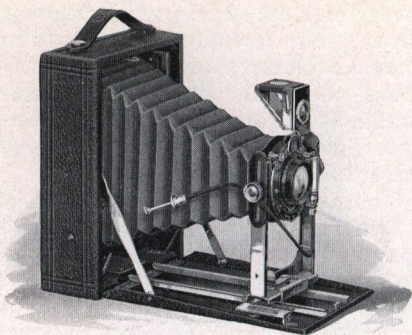
These advantages are offered in a camera that takes films or plates with equal facility, and is as compact and easy to carry as the average hand camera for films only. The cameras are richly finished as befits their high grade equipments.

S P E C I F I C A T I O N S

Capacity—12 film or 2 plate exposures.
Box—Seasoned wood. *Bed*—Aluminum.
 Rack and pinion for fine focusing.
Front—Rising and sliding. *Finder*—Brilliant, reversible, collapsible. *Tripod Sockets*—Two. *Lens*—Bausch & Lomb Kodak Anastigmat, *f*.6.3. *Shutter*—Optimo. *Dimensions*— $3\frac{1}{4} \times 4\frac{1}{4}$, $2\frac{1}{4} \times 4\frac{1}{8} \times 5\frac{3}{8}$ in.; $3\frac{1}{4} \times 5\frac{1}{2}$, $2\frac{1}{8} \times 4\frac{11}{16} \times 7\frac{1}{8}$ in. *Weight*— $3\frac{1}{4} \times 4\frac{1}{4}$, 26 ounces; $3\frac{1}{4} \times 5\frac{1}{2}$, 36 ounces.

P R I C E S

Filmplate Premo Special with Bausch & Lomb Kodak Anastigmat Lens, <i>f</i> .6.3, and Optimo Shutter, Film Pack Adapter and Plate Holder, (Lens formerly listed as Zeiss-Kodak Anastigmat)	$3\frac{1}{4} \times 4\frac{1}{4}$	$3\frac{1}{4} \times 5\frac{1}{2}$ ^{3A}
	\$50.00	\$60.00
Ditto, Kodak Anastigmat Lens, <i>f</i> .6.3, Ditto, Bausch & Lomb Tessar, Ser. IIb Lens, <i>f</i> .6.3 (Formerly listed as B. & L. Zeiss Tessar)	45.00	50.00
	60.00	71.00
Case, Velvet Lined,	3.00	3.25
Premo Film Pack,70	.80



Premo Number 8

The Premo No. 8 has scored a splendid success among those who want a convenient, dependable plate camera at a moderate price.

It is made of seasoned wood, with front bed of aluminum and metal runways, making an instrument of unusual compactness for a plate camera. The bed and box are covered with black leather, the bellows is black, and the metal parts being finished in nickel, give the camera a very neat, attractive appearance.

The standard is made of metal and is very rigid, a rising and falling front is supplied and the finder is of the new Premo collapsible type. The camera is regularly equipped

with the Kodak Ball Bearing shutter and Planatograph lens.

This model of course is provided with a ground glass for sharp focusing, and while it is intended primarily for plates, by the use of a Premo Film Pack Adapter, it can be converted into a compact, daylight loading film camera, perfectly suitable for any occasion where the light weight and greater convenience of films are desired.

At a slight additional charge the $3\frac{1}{4} \times 5\frac{1}{2}$ size is furnished with the new Kodak Anastigmat lens *f*.7.7.

SPECIFICATIONS

Capacity—12 film or 2 plate exposures.

Box—Kiln-dried wood covered with leather.

Standard—Made of metal with rising and falling front.

Carrying Case—Imitation leather with compartment for holders.

Finder—Reversible, brilliant, collapsible.

Tripod Sockets—Two.

Lens—Planatograph.

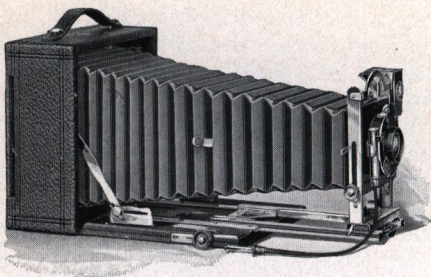
Shutter—Kodak Ball Bearing with cable release.

Dimensions— $3\frac{1}{4} \times 5\frac{1}{2}$, $2 \times 5 \times 7\frac{1}{4}$ in.; 4×5 , $2 \times 5\frac{1}{4} \times 6\frac{1}{2}$ in.; 5×7 , $2\frac{1}{4} \times 6\frac{1}{2} \times 8\frac{1}{2}$ in.

Weight— $3\frac{1}{4} \times 5\frac{1}{2}$, 34 ounces; 4×5 , 30 ounces, 5×7 , 42 ounces.

PRICES

Premo No. 8, with Planatograph Lens, Kodak Ball Bearing Shutter.			
Carrying Case and Plate Holder, .	4×5 \$12.00	3A($3\frac{1}{4} \times 5\frac{1}{2}$) \$14.00	5×7 \$18.00
Ditto, with Kodak Anastigmat Lens <i>f</i> .7.7,		12.00	
Premo Film Pack Adapter,	1.50	1.50	2.50
Premo Film Pack (12 ex.).90	.80	1.60
Kodak Portrait Attachment,50	.50	.50



Premo Number 9

This efficient camera is designed for the amateur who wishes an instrument of very wide scope. With its complete equipment and accurate, convenient mechanical adjustments, it is a camera of wide capabilities and superior quality.

The bellows has sufficient draw to permit the use of the single lens combination or a telephoto attachment of several magnifications. The extension plate is actuated by rack and pinion which works with exceptional smoothness and is provided with a simple locking device.

The standard is constructed of metal, it is very rigid, and incorporates a rising and falling front of great latitude. This, in connection with the swing bed construction

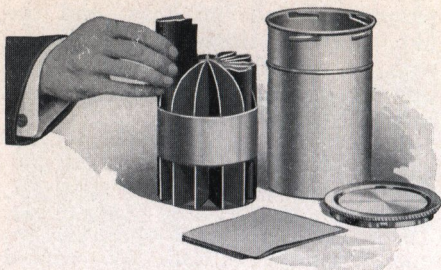
makes it an easy matter to take pictures of tall buildings, and the like, without tipping the camera, with the attendant distortion. The lens board is removable, and the back is reversible.

SPECIFICATIONS

Capacity—12 film or 2 plate exposures. *Box*—Kiln-dried wood, covered with fine grain leather. *Bed*—Hand polished wood, finished in black, and supplied with rack and pinion for fine focusing, and swing arrangement. *Back*—Spring catch, reversible. *Standard*—Made of metal, with rising and falling front. *Finder*—Brilliant, reversible, collapsible. *Tripod Socket*—One. *Lens*—Planatograph. *Shutter*—Kodak Automatic. *Carrying Case*—Sole leather, with compartments for holders. *Bellows*—Black leather; draw $3\frac{1}{4} \times 5\frac{1}{2}$, 13 in.; 4×5 , 13 in.; 5×7 , $15\frac{1}{4}$ in. *Dimensions*— $3\frac{1}{4} \times 5\frac{1}{2}$, $3 \times 7 \times 7$ in.; 4×5 , $3 \times 7 \times 7$ in.; 5×7 , $2\frac{7}{8} \times 8\frac{1}{4} \times 8\frac{1}{4}$ in. *Weight*— $3\frac{1}{4} \times 5\frac{1}{2}$, 63 ounces; 4×5 , 63 ounces, 5×7 , 76 ounces.

PRICES

	4x5	3A $3\frac{1}{4} \times 5\frac{1}{2}$	5x7
Premo No. 9. with Planatograph Lens, Kodak Automatic Shutter, Case and Holder. . . .	\$28.00	\$28.00	\$33.00
Ditto, with Kodak Anastigmat Lens, <i>f.</i> 7.7. . . .	33.00	33.00	
Ditto, with Kodak Anastigmat Lens, <i>f.</i> 6.3, and Optimo Shutter.	56.00	56.00	
Ditto, with Bausch & Lomb Kodak Anastigmat Lens, <i>f.</i> 6.3, and Optimo Shutter (Formerly listed as Zeiss Kodak Anastigmat,	62.50	62.50	81.50
Premo Film Pack Adapter, . . .	1.50	1.50	2.50
Premo Film Pack (12 exposures)	.90	.80	1.60
Kodak Portrait Attachment, .	.50	.50	.50

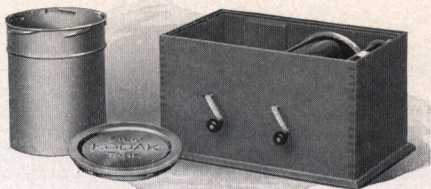


Premo Film Pack Tank

The Premo Film Pack Tank assures the veriest beginner that every pack of films placed in the tank, where the simple directions are implicitly followed, will come out developed perfectly. No experience is required. It places the novice upon the same plane in development with the expert. So compact it may easily be carried in a suit case.

PRICES

Premo Film Pack Tank No. 1, for 12 1 $\frac{3}{4}$ x 2 $\frac{3}{8}$ or 2 $\frac{1}{4}$ x 3 $\frac{1}{4}$ films,	\$1.50
Ditto, No. 2, for 12 2 $\frac{1}{2}$ x 4 $\frac{1}{4}$, 3 $\frac{1}{4}$ x 4 $\frac{1}{4}$, 3 x 5 $\frac{1}{4}$, 3 $\frac{1}{4}$ x 5 $\frac{1}{2}$, or 4 x 5 films,	4.00
Ditto, No. 3, for 6 5 x 7 films,	4.50
Premo Tank Developing Powders, in packages of 6, No. 1,20
Ditto, No. 2,25
Ditto, No. 3,35
Acid Fixing Powder, per 1 pound package,25
Ditto, per $\frac{1}{2}$ pound package,15
Ditto, per $\frac{1}{4}$ pound package,10



Kodak Film Tank

The Kodak Film Tank not only develops roll film automatically but it does it in broad daylight, eliminating the necessity for a dark room during any part of the photographic process. It has proved that the time and temperature method of development is not only simpler than, but superior to the old methods.

PRICES

Brownie Kodak Film Tank, for use with No. 2 and No. 2 Folding Cartridge Premo cartridges, complete,	\$2.75
Cover for same,25
2½-inch Kodak Film Tank, for use with all Cartridges having a film width of 2½ inches or less, complete,	4.00
3½-inch Kodak Film Tank, for use with all Kodak and Brownie cartridges having a film width of 3½ inches or less, complete .	5.50
Flexible Rubber Tray, for 3½-inch Kodak Film Tank,	1.40
Kodak Tank Developer Powders for Brownie Kodak Film Tank, per package, ½ dozen.	.15
Ditto, for 2½-inch tank, per package, ½ dozen,	.20
Ditto, for 3½-inch tank, per package, ½ dozen,	.20

The Kodak Metal Tripod

Combining light weight and compactness with exceptional rigidity, this is an ideal tripod for cameras up to 5 x 7.

Has telescoping legs of brass tubing—lower ones nicked—the upper part black enameled, and should a part become inoperative through wear or accident, any section may be removed for repairs—a unique feature.

When extended each section catches and holds firmly. To close, it is necessary to press in on top catch only.

The Nos. 1 and 2 have revolving heads for attaching to camera. With this construction the camera may be swung, so as to take in the desired view without moving the tripod.

The No. 6 has folding head and folds into such a compact flat package that it can be easily carried in the ordinary pocket.

	Closed	Ex-	Weight	Price
Kodak Metal Tripod,	in.	tended	in. ozs.	
No. 0, 3 sections, .	15½	39½	15	\$2.00
No. 1, 4 sections, .	15	48½	24½	3.00
No. 1C, 4 sections, .	15¼	48¾	25½	2.75
No. 2, 5 sections, .	13½	49½	25	3.75
No. 2C, 5 sections, .	13¾	49¾	26	3.50
No. 6, 6 sections, .	11¾	40	24	5.50
Leatherette Case for No. 0,75
Leather carrying case for any style,				1.75

Premo Film Pack Adapters

Size	Price
3¼ x 4¼	\$1.00
3 x 5¼	1.50
3A (3¼ x 5½)	1.50
4 x 5	1.50
5 x 7	2.50

ROCHESTER OPTICAL DIVISION

EASTMAN KODAK COMPANY

ROCHESTER, N. Y.

F. HERSH HARDWARE COMPANY
825—827 HAMILTON ST.
ALLENTOWN, PA.