

An Added Pleasure

TO the pleasure of being out of doors, to the pleasures of your vacation and to many other pleasures, a Premo adds the further pleasure of making pictures of all the things that make the occasion worth while.

Light and compact, a Premo can be taken along always and never be in the way. The simplest of all cameras to load and operate, the most inexperienced person can take a Premo and by following the simple instructions which come with each camera, make first-class pictures from the start.

The complete story of the Premo, the daylight loading Premo Film Pack and the Premo Tank Developing system, is told in the general Premo catalogue. Should you wish more information than is contained in this little booklet, get a copy of this catalogue from your dealer, or we will very gladly mail one to you direct upon request.

ROCHESTER OPTICAL DIVISION

Eastman Kodak Company

ROCHESTER, N. Y.

Premo Junior Cameras



INEXPENSIVE but well made, and reliable in every respect, these simple cameras are capable of producing very good pictures in all ordinary work, such as portraiture, snap shots in good light, average landscapes and the like.

They are all fitted with tested lenses and automatic shutters. They are substantially made to withstand hard knocks; covered with imitation leather and are neat and attractive in appearance.

To make a picture with a Premo Jr. is a matter of seconds only. No focusing, no estimating of distances, is necessary.

To load, open the back in any light, drop in Premo Film Pack and close the back.

Then set the shutter for time or instantaneous exposure as required by the subject. This is accomplished by merely moving a lever up or down.

Now glance at the finder, compose the picture, press a lever and the exposure is made.

Good enough to satisfy the many grown-up amateurs who are using them, these are really ideal cameras for boys and girls, by reason of their low cost, substantial construction and extremely simple operation.

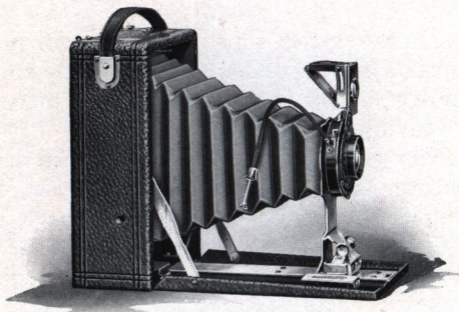
Specifications

CAPACITY—12 exposures without reloading. SIZE OF CAMERA—No. 0, $2\frac{1}{4} \times 3\frac{5}{8} \times 5\frac{1}{4}$ in.; No. 1, $3\frac{1}{8} \times 4\frac{1}{2} \times 5\frac{3}{4}$ in.; No. 1A, $3\frac{1}{2} \times 5\frac{1}{2} \times 5\frac{5}{8}$ in.; No. 3, $4 \times 5\frac{1}{2} \times 5\frac{3}{4}$ in. WEIGHT—No. 0, 7 ounces; No. 1, 11 ounces; No. 1A, 14 ounces; No. 3, 20 ounces. SHUTTERS—Rotary Automatic, all excepting No. 0, with diaphragm stops. LENS—Nos. 0 and 1, Meniscus; No. 1A and 3, Meniscus Achromatic. FINDERS—Two. TRIPOD SOCKETS—No. 0, none; Nos. 1, 1A and 3, two.

Prices

	No. 0	No. 1	No. 1A	No. 3
	$1\frac{3}{4} \times 2\frac{3}{8}$	$2\frac{1}{4} \times 3\frac{1}{4}$	$2\frac{1}{2} \times 4\frac{1}{4}$	$3\frac{1}{4} \times 4\frac{1}{4}$
Premo Junior	\$1.50	\$2.00	\$3.00	\$4.00
Carrying Case60	.75	.85	1.10
Premo Film Pack				
(12 exposures)25	.40	.50	.70
Kodak Portrait Attachment		.50	.50	.50

Film Premo No. 1



THE Film Premos are designed to be as convenient and easy of manipulation as possible, and without reference to the requirements of the specialists, are fitted only with the simple adjustments sufficient to enable the average photographer, whether experienced or not, to secure good pictures under all ordinary conditions.

Working with this idea in mind, we are enabled to offer these cameras, not only at moderate prices, but for compactness and light weight, for ease of loading and unloading, the Film Premos have a large margin over any other type of cameras.

As convenient and low priced as these cameras are, however, the very first consideration in their construction has been the quality of results which must be produced. And the lens and shutter equipments and the film used in them offer the assurance that the Film Premos will produce as good pictures as any camera that can be purchased, aside from those fitted with anastigmat lenses.

In addition to the double lens fittings these cameras are also offered with single meniscus achromatic lenses for those who prefer compact folding cameras requiring but little adjustment of focus for objects at different distances.

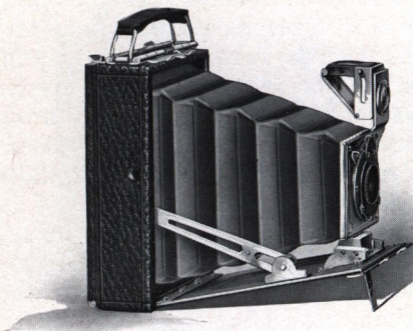
Specifications

CAPACITY—12 film exposures. BOX—Seasoned wood. BED—Aluminum. DIMENSIONS— $3\frac{1}{4} \times 4\frac{1}{4}$, $2\frac{1}{4} \times 4 \times 5\frac{1}{2}$ in.; 3A ($3\frac{1}{4} \times 5\frac{1}{2}$), $2\frac{3}{8} \times 4\frac{5}{8} \times 7\frac{1}{8}$ in. WEIGHT— $3\frac{1}{4} \times 4\frac{1}{4}$, 19 ounces; 3A ($3\frac{1}{4} \times 5\frac{1}{2}$), 29 ounces. LENS—Planatograph. SHUTTER—Kodak Ball Bearing with cable release. TRIPOD SOCKETS—Two. FINDER—Reversible, brilliant, collapsible. Automatic Standard Clamp.

Prices

	$3\frac{1}{4} \times 4\frac{1}{4}$	3A $3\frac{1}{4} \times 5\frac{1}{2}$
Film Premo No. 1, with Planatograph Lens and Kodak Ball Bearing Shutter	\$10.00	\$12.50
Ditto, with Meniscus Achromatic Lens and Kodak Ball Bearing Shutter	8.00	10.50
Sole Leather Carrying Case	1.50	2.00
Kodak Autotime Scale	1.00	1.00
Premo Film Pack (12 exposures)70	.80
Kodak Portrait Attachment50	.50

Premoette Junior



COMPACT efficiency is the secret of the really remarkable success of this attractive little camera.

Made largely of aluminum, it is just a trifle larger than the pictures it makes, and it is so easy to operate, so well manufactured, so carefully equipped and tested, that the merest beginner in photography can use a Premoette Jr. and get pictures of excellent quality from the very start. Besides this, Premoette Jr. negatives are of such good quality that enlargements up to almost any size can be made from them, when desired. Thus with this little camera, which can be car-

ried in a boy's pocket or a lady's hand-bag, it is easily possible, by the simple process of enlargement, to get pictures as large as those made with the most bulky of view cameras.

For this reason many amateurs who have larger outfits are adding these inexpensive little cameras to their equipment. In fact, there is not an amateur photographer in the country, no matter how complete his photographic equipment, who would not find a Premoette Jr. a very convenient and valuable addition to it.

Specifications

Premoette Jr. No. 1. CAPACITY—12 film pack exposures without reloading. DIMENSIONS—1½ x 3 x 4¾ in. WEIGHT—12 ozs. LENS—Meniscus Achromatic. SHUTTER—Kodak Ball Bearing No. 0. FINDER—Collapsible, reversible, brilliant. TRIPOD SOCKETS—Two.

Premoette Jr. No. 1A. CAPACITY—12 film pack exposures without reloading. DIMENSIONS—1¾ x 3¼ x 5¾ in. WEIGHT—18 ozs. LENS—Meniscus Achromatic. SHUTTER—Kodak Ball Bearing, but has no bulb, operating with finger release only. FINDER—Brilliant, reversible, collapsible. TRIPOD SOCKETS—Two.

Prices

	No. 1	No. 1A
Premoette Jr. with Meniscus Achromatic	2¼ x 3¼	2½ x 4¼
Lens and Kodak Ball Bearing Shutter	\$5.00	\$ 8.00
Ditto, with Planatograph Lens	7.00	10.00
Kodak Autotime Scale	1.00	1.00
Carrying Case	1.00	1.25
Premo Film Pack (12 exposures)40	.50
Kodak Portrait Attachment50	.50

Premoette Jr. *Special*



SO compact, so generally desirable is the Premoette Jr. that there are many amateurs among the more serious, particular workers, who have wished for a camera of the same type with the very maximum of photographic efficiency. To such, the Premoette Jr. Special is a revelation.

Here is a camera with the light weight and compactness, the ease of loading and operating, of the original Premoette Jr., but with an equipment which places it on a par in capabilities, with the largest, most expensive amateur cameras made.

Its fine equipment enables one to work under adverse conditions that the ordi-

narily equipped camera could not meet, as, for instance, snap shot work in dull lights, fast indoor portraiture, and the like. And the remarkable sharpness and depth of the negatives make them suitable for enlarging up to any size desired.

In keeping with its high grade equipment, we have finished this camera in the best possible manner. It is covered with genuine Persian Morocco, and the bellows is of the finest quality black leather, giving it a rich, attractive appearance.

Specifications

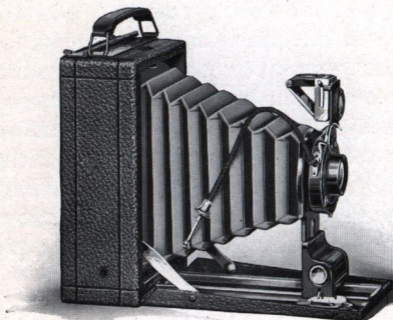
Premoette Jr. No. 1 Special. CAPACITY—12 2¼ x 3¼ film pack exposures without reloading. DIMENSIONS—1½ x 3 x 4¾ in. WEIGHT—13 ounces. LENS—Zeiss Kodak Anastigmat f.6.3. SHUTTER—Compound, with cable release, highest speed $\frac{1}{300}$ second. FINDER—Brilliant, reversible, collapsible. TRIPOD SOCKETS—Two.

Premoette Jr. No. 1A Special. CAPACITY—12 2½ x 4¼ Premo Film Pack exposures without reloading. DIMENSIONS—1¾ x 3¼ x 5¾ in. WEIGHT—19 ounces. LENS—Zeiss Kodak Anastigmat f.6.3. SHUTTER—Compound with cable release, highest speed $\frac{1}{250}$ second. FINDER—Reversible, brilliant, collapsible. TRIPOD SOCKETS—Two.

Prices

Premoette Jr. Special with Zeiss Kodak	No. 1	No. 1A
Anastigmat Lens f.6.3 and Compound	2¼ x 3¼	2½ x 4¼
Shutter	\$36.00	\$41.00
Ditto, with Cooke Kodak Anastigmat Lens		
f.6.3		\$32.00
Grain Leather Carrying Case	1.50	1.75
Premo Film Pack (12 exposures)40	.50
Kodak Portrait Attachment50	.50

Premoette Senior



THE advantages of the anastigmat lens for amateur photography have become so generally recognized that we have designed this new model to provide, for the most popular of the larger amateur sizes, a compact, easily operated camera with anastigmat efficiency, at the lowest possible price.

It is equipped with the new Kodak Anastigmat $f.7.7$ lens, which, for definition and covering power, is the equal of any anastigmat made, and has a higher speed than any R.R. lens. Thus in getting this camera the amateur assures himself not only of the microscopic definition

of the finest anastigmat, but also of a greater speed than is possible with the ordinarily equipped camera.

The Premoette Sr. is carefully made in every detail. The idea has been to keep the camera as simple in operation as possible, to avoid all special adjustments or features which were not essential to the making of first-class pictures under average conditions of amateur photography. This camera makes no pretensions to cover the field of the specialist, but it is a camera which will give the best of satisfaction to those who wish to make good, clear, sharp, every-day pictures of the persons and things they are interested in.

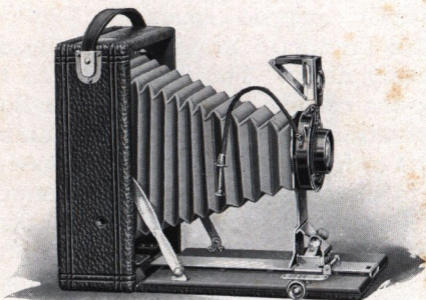
Specifications

CAPACITY—12 exposures. BOX—Seasoned wood. BED AND BACK—Aluminum. DIMENSIONS— $2\frac{1}{2} \times 4\frac{1}{4}$, $1\frac{7}{8} \times 3\frac{5}{8} \times 5\frac{5}{8}$ in.; 3A ($3\frac{1}{4} \times 5\frac{1}{2}$), $2\frac{1}{4} \times 4\frac{1}{2} \times 7\frac{1}{8}$ in. WEIGHT— $2\frac{1}{2} \times 4\frac{1}{4}$, 21 ounces; 3A ($3\frac{1}{4} \times 5\frac{1}{2}$), 35 ounces. LENS—Kodak Anastigmat, *f*.7.7. SHUTTER—Kodak Ball Bearing, with cable release. TRIPOD SOCKETS—Two. FINDER—Reversible, brilliant, collapsible. Automatic Standard Clamp. Automatic Focusing Lock.

Prices

		3A
Premoette Sr. with Kodak Anastigmat Lens, $2\frac{1}{2} \times 4\frac{1}{4}$		$3\frac{1}{4} \times 5\frac{1}{2}$
<i>f</i> .7.7, and Kodak Ball Bearing Shutter .	\$15.00	\$17.50
Sole Leather Carrying Case	1.50	2.00
Premo Film Pack (12 exposures)50	.80
Kodak Portrait Attachment50	.50

P o c k e t P r e m o C



IN this camera are offered the daylight loading feature and all the other conveniences of films, together with the ground glass focusing feature of the plate camera. It uses films or plates with equal facility, and the ground glass may be used for focusing before each exposure just as well *when using films* as when using plates.

These advantages are offered in a camera which is even lighter and more compact than the average purely film camera and which is so easy to operate that anyone can make good pictures with a Pocket Premo C from the start, without any previous experience. The Pocket

Premo C is fitted with our Planatograph, the best rapid rectilinear lens that can be obtained, and the new Kodak Ball Bearing Shutter with cable release.

It is also offered equipped with the new Kodak Anastigmat lens, *f.7.7*. This lens provides the sharpness of focus and the definition of the highest grade anastigmat lens, and has an advantage in speed over any R. R. lens. With such a lens, the Pocket Premo C is especially desirable, for with its ground glass focusing feature, it enables one to obtain the fullest advantage of an anastigmat lens equipment.

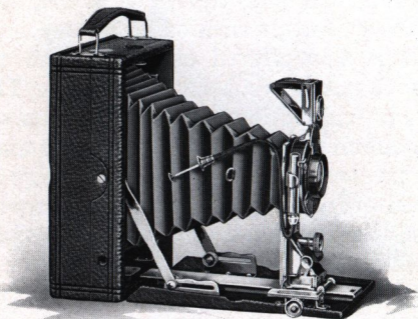
Specifications

CAPACITY—12 film or 2 plate exposures. Box—Mahogany. BED—Mahogany, with rack and pinion for focusing. FINDER—Reversible, collapsible, brilliant. TRIPOD SOCKETS—Two. LENS—Planatograph. SHUTTER—Kodak Ball Bearing, with cable release. DIMENSIONS— $3\frac{1}{4} \times 4\frac{1}{4}$, $2\frac{1}{8} \times 4\frac{1}{4} \times 5\frac{1}{2}$ in.; 3A ($3\frac{1}{4} \times 5\frac{1}{2}$), $2\frac{1}{4} \times 5 \times 7\frac{1}{8}$ in. WEIGHT— $3\frac{1}{4} \times 4\frac{1}{4}$, 21 ounces; 3A ($3\frac{1}{4} \times 5\frac{1}{2}$), 32 ounces. Automatic Standard Clamp.

Prices

		3A
Pocket Premo C with Planatograph Lens,	$3\frac{1}{4} \times 4\frac{1}{4}$	$3\frac{1}{4} \times 5\frac{1}{2}$
Kodak Ball Bearing Shutter and Plate		
Holder	\$12.00	\$15.00
Ditto, with Kodak Anastigmat Lens, <i>f.7.7</i>	17.00	20.00
Double Plate Holder	1.00	1.00
Sole Leather Carrying Case	1.75	2.00
Kodak Autotime Scale	1.00	1.00
Premo Film Pack Adapter	1.00	1.50
Premo Film Pack (12 exposures)70	.80
Kodak Portrait Attachment50	.50

Filmplate Premo



ALL that can be said of the Pocket Premo C is equally true of the Filmplate Premo, but this model has even greater capabilities. Like the Pocket Premo C it takes films or plates with equal facility, but it is fully equipped for more serious work.

The shutter is the Kodak Automatic, fitted with Kodak Autotime Scale. The lens is the Planatograph, and the camera is fitted with rising and sliding front, rack and pinion for focusing, and swing bed.

With accurate focusing scale and brilliant finder, the Filmplate Premo is a

splendid snap shot instrument. For exacting work, the ground glass is instantly available for composition or focusing, whether films or plates are being used.

With all these advantages there is nothing bulky or cumbersome or complicated about the Filmplate Premo. It is as compact and as easily carried as the average camera for films alone. It is so simple to understand and operate that anyone who can read the instructions which come with the camera can at once start in to make good pictures, without any trouble at all.

Specifications

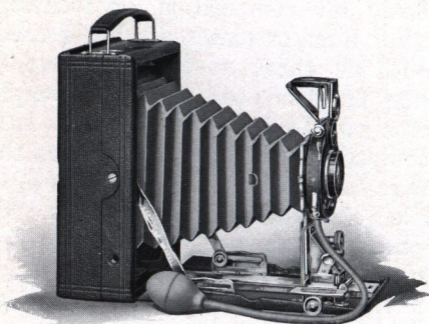
CAPACITY—12 film or 2 plate exposures. BOX—Cherry. BED—Aluminum. Rack and pinion for fine focusing. FRONT—Rising and sliding. FINDER—Reversible, brilliant, collapsible. TRIPOD SOCKETS—Two. LENS—Planatograph. SHUTTER—Kodak Automatic with Autotime Scale. DIMENSIONS— $3\frac{1}{4} \times 4\frac{1}{4}$, $2\frac{1}{4} \times 4\frac{1}{8} \times 5\frac{3}{8}$ in.; 3A ($3\frac{1}{4} \times 5\frac{1}{2}$), $2\frac{3}{8} \times 4\frac{3}{4} \times 7\frac{1}{8}$ in.; 4×5 , $2\frac{1}{4} \times 4\frac{7}{8} \times 6\frac{1}{8}$ in.; 5×7 , $2\frac{5}{8} \times 6 \times 8\frac{3}{8}$ in. WEIGHT— $3\frac{1}{4} \times 4\frac{1}{4}$, 30 ounces; 3A ($3\frac{1}{4} \times 5\frac{1}{2}$), 37 ounces; 4×5 , 33 ounces; 5×7 , 56 ounces. Automatic Standard Clamp.

Prices

Filmplate Premo with Planatograph Lens, Kodak Auto.

Shutter, Autotime Scale,	3A			
Plate Holder and Film	$3\frac{1}{4} \times 4\frac{1}{4}$	$3\frac{1}{4} \times 5\frac{1}{2}$	4×5	5×7
Pack Adapter	\$22.50	\$25.00	\$25.00	\$30.00
Carrying Case	1.75	2.25	2.25	3.00
Premo Film Pack70	.80	.90	1.60
Kodak Portrait Attachment	.50	.50	.50	.50

Filmplate Premo *Special*



FOR those who want the highest possible efficiency in a hand camera, combined with compactness and convenience, this is truly the ideal camera.

It is fully equipped for making good pictures under any condition that the amateur photographer is likely to encounter.

It is fitted with every desirable mechanical convenience. It has a fast, fully corrected lens—the Zeiss Kodak Anastigmat, $f.6.3$, specially designed for hand camera work, and a high speed shutter, the Compound, that works with great accuracy and precision.

This equipment not only provides a very high speed for rapidly moving objects, but it enables the operator to make pictures on dark days, indoors, and under generally unfavorable light conditions, where absolute failure would result from the use of the ordinarily equipped camera.

These advantages are offered in a camera that takes films or plates with equal facility, and is as compact and easy to carry, as convenient to operate, as the average hand camera for films only.

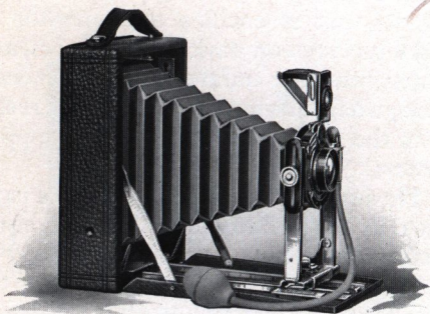
Specifications

CAPACITY—12 film or 2 plate exposures. Box—Seasoned wood. BED—Aluminum. Rack and pinion for fine focusing. FRONT—Rising and sliding. FINDER—Brilliant, reversible, collapsible. TRIPOD SOCKETS—Two. LENS—Zeiss Kodak Anastigmat *f*.6.3. SHUTTER—Compound. DIMENSIONS— $3\frac{1}{4} \times 4\frac{1}{4}$, $2\frac{1}{4} \times 4\frac{1}{8} \times 5\frac{3}{8}$ in.; 3A ($3\frac{1}{4} \times 5\frac{1}{2}$), $2\frac{1}{8} \times 4\frac{1}{8} \times 7\frac{1}{8}$ in.; 4×5 , $2\frac{1}{4} \times 4\frac{7}{8} \times 6\frac{1}{8}$ in.; 5×7 , $2\frac{5}{8} \times 6 \times 8\frac{3}{8}$ in. WEIGHT— $3\frac{1}{4} \times 4\frac{1}{4}$, 26 ounces; 3A ($3\frac{1}{4} \times 5\frac{1}{2}$), 36 ounces; 4×5 , 28½ ounces; 5×7 , 48 ounces.

Prices

Filmplate Premo Special with Zeiss Kodak Anastigmat <i>f</i> .6.3 and Compound Shutter,				
		3A		
Film Pack Adapter and	$3\frac{1}{4} \times 4\frac{1}{4}$	$3\frac{1}{4} \times 5\frac{1}{2}$	4×5	5×7
Plate Holder	\$50.00	\$60.00	\$60.00	\$80.00
Ditto, Cooke Kodak Anastigmat <i>f</i> .6.3	40.00	45.00	45.00	
Ditto, Cooke Ser. III A, <i>f</i> .6.5 Lens	61.00	67.50	67.50	90.00
Ditto, B. & L.-Zeiss Tessar Ser. II B, <i>f</i> .6.3 Lens . .	60.00	71.00	71.00	90.00
Case, Velvet Lined	2.75	3.00	3.00	4.00
Kodak Autotime Scale . . .	1.50	1.50	1.50	1.50
Premo Film Pack70	.80	.90	1.60

P r e m o N u m b e r 8



*T*HE Premo No. 8 has scored a splendid success among those who want a convenient, dependable plate camera at a moderate price.

It is made of seasoned wood, with front bed of aluminum and metal runways, making an instrument of unusual compactness for a plate camera. The bed and box are covered with black leather, the bellows is black, and the metal parts being finished in nickel, gives the camera a very neat, attractive appearance.

The standard is made of metal and is very rigid, a rising and falling front is supplied and the finder is of the new Premo collapsible type. The camera is

regularly equipped with the Kodak Ball Bearing shutter and our Planatograph lens.

This model of course is provided with a ground glass for sharp focusing, and while it is intended primarily for plates, it can be loaded with films just as easily. By the use of a Premo Film Pack Adapter, it can be converted into a compact, daylight loading film camera, perfectly suitable for any occasion where the light weight and greater convenience of films are desired.

At a slight additional charge the $3\frac{1}{4} \times 5\frac{1}{2}$ size is furnished with the new Kodak Anastigmat lens *f*.7.7.

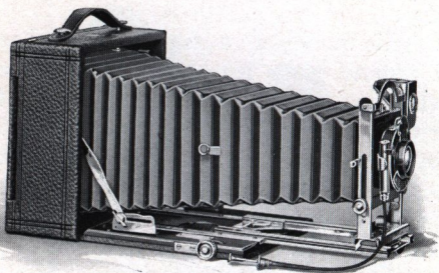
Specifications

CAPACITY—12 film or 2 plate exposures. BOX—Kiln-dried wood covered with leather. STANDARD—Made of metal with rising and falling front. CARRYING CASE—Imitation leather with compartments for holders. FINDER—Reversible, brilliant, collapsible. TRIPOD SOCKETS—Two. LENS—Planatograph. SHUTTER—Kodak Ball Bearing. DIMENSIONS—3A ($3\frac{3}{4} \times 5\frac{1}{2}$), $2 \times 5 \times 7\frac{1}{4}$ in.; 4 x 5, $2 \times 5\frac{1}{4} \times 6\frac{1}{2}$ in.; 5 x 7, $2\frac{1}{4} \times 6\frac{1}{2} \times 8\frac{1}{2}$ in. WEIGHT—3A ($3\frac{3}{4} \times 5\frac{1}{2}$), 34 ounces; 4 x 5, 30 ounces; 5 x 7, 42 ounces.

Prices

Premo No. 8, with Planatograph Lens, Kodak Ball Bearing Shutter, Carrying Case	4 x 5	3A ($3\frac{3}{4} \times 5\frac{1}{2}$)	5 x 7
and Plate Holder	\$12.00	\$14.00	\$18.00
Ditto, with Kodak Anastigmat Lens <i>f</i> .7.7		19.00	
Kodak Autotime Scale . . .	1.00	1.00	1.00
Premo Film Pack Adapter .	1.50	1.50	2.50
Premo Film Pack (12 ex.) .	.90	.80	1.60
Kodak Portrait Attachment	.50	.50	.50

P r e m o N u m b e r 9



THIS efficient camera is designed for the amateur who wishes an instrument of very wide scope. With its complete equipment and accurate, convenient mechanical adjustments, it is a camera never before approached in plate camera construction, at the price.

The bellows has sufficient draw to permit the use of the single lens combination or a telephoto attachment of several magnifications. The extension plate is actuated by rack and pinion which works with exceptional smoothness and is provided with a simple locking device.

The standard is constructed of metal, it is very rigid, and incorporates a rising and falling front of great latitude. This

in connection with the swing bed construction makes it an easy matter to take pictures of tall buildings, and the like, without tipping the camera, with its attendant distortion. The lens board is removable, the finder is the new Premo collapsible brilliant, and the back is reversible.

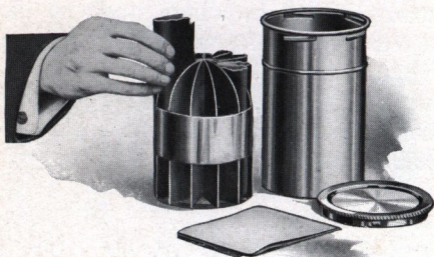
Specifications

CAPACITY—12 film or 2 plate exposures. BOX—Kiln-dried wood, covered with fine grain leather. BED—Hand polished wood, finished in black, and supplied with rack and pinion for fine focusing, and swing arrangement. BACK—Spring catch, reversible. STANDARD—Made of metal, with rising and falling front. FINDER—Brilliant, reversible, collapsible. TRIPOD SOCKET—One. LENS—Planatograph. SHUTTER—Kodak Automatic. CARRYING CASE—Sole leather, with compartments for holders. BELLOWS—Black leather; draw, 3A ($3\frac{1}{4} \times 5\frac{1}{2}$) 13 in.; 4 x 5, 13 in.; 5 x 7, 15 $\frac{1}{4}$ in. DIMENSIONS—3A ($3\frac{1}{4} \times 5\frac{1}{2}$), 3 x 7 x 7 in.; 4 x 5, 3 x 7 x 7 in.; 5 x 7, 2 $\frac{7}{8} \times 8\frac{1}{4} \times 8\frac{1}{4}$ in. WEIGHT—3A ($3\frac{1}{4} \times 5\frac{1}{2}$), 63 ounces; 4 x 5, 63 ounces; 5 x 7, 76 ounces.

Prices

Premo No. 9, with Planatograph Lens, Kodak Automatic Shutter with Autotime Scale, Carrying Case and Plate Holder			
	4 x 5	3A ($3\frac{1}{4} \times 5\frac{1}{2}$)	5 x 7
	\$28.00	\$28.00	\$33.00
Ditto, with Kodak Anastigmat Lens <i>f</i> .7.7			
	33.00	33.00	
Ditto, with Cooke Kodak Anastigmat Lens <i>f</i> .6.3 and Compound Shutter and Cable Release			
	51.00	51.00	
Ditto, with Zeiss Kodak Anastigmat Lens <i>f</i> .6.3 and Compound Shutter			
	62.50	62.50	81.50
Premo Film Pack Adapter . .	1.50	1.50	2.50
Premo Film Pack (12 ex.) . .	.90	.80	1.60
Kodak Portrait Attachment .	.50	.50	.50

Premo Film Pack Tank



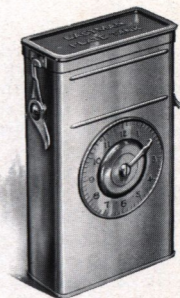
THE Premo Film Pack Tank assures the veriest beginner that every pack of films placed in the tank, where the simple directions are implicitly followed, will come out developed perfectly. No experience is required. It places the novice upon the same plane in development with the expert.

Prices

Premo Film Pack Tank No. 1, for 12 $1\frac{3}{4} \times 2\frac{3}{8}$ or $2\frac{1}{4} \times 3\frac{1}{4}$ films	\$1.25
Ditto, No. 2, for 12 $2\frac{1}{2} \times 4\frac{1}{4}$, $3\frac{1}{4} \times 4\frac{1}{4}$, $3 \times 5\frac{1}{4}$, $3\frac{1}{4} \times 5\frac{1}{2}$, or 4×5 films	3.50
Ditto, No. 3, for 6 5×7 films	4.00
Premo Tank Developing Powders, in packages of 6,	
No. 120
In packages of 6, No. 225
In packages of 6, No. 335
Acid Fixing Powder, per 1 pound package25
Ditto, per $\frac{1}{2}$ pound package15
Ditto, per $\frac{1}{4}$ pound package10

Eastman Plate Tank

THIS produces the same good results as does the Premo Film Pack Tank, and consists of a metal solution cup with tightly fitting cover, a cage for holding twelve plates or less, and a loading fixture for loading the plates into the cage. It is very simple to use and requires but a few moments in the dark room to load. At night any room where the shades are drawn can be utilized.



In the $3\frac{1}{4} \times 4\frac{1}{4}$ and 4×5 sizes, the cage of plates can be developed in the 4×5 Premo Film Pack Tank.

Prices

Eastman Plate Tank, for 4×5 , $3\frac{1}{4} \times 5\frac{1}{2}$, and smaller plates, includes solution cup, plate cage, loading fixture and adjustable kit	\$3.50
Ditto, 5×7 , without kit	4.50
Adjustable Kit, for 4×5 or $3\frac{1}{4} \times 5\frac{1}{2}$ tank, to take smaller plates50
Separate Kits, for 5×7 tank, to take $3\frac{1}{4} \times 5\frac{1}{2}$, $4\frac{1}{4} \times 6\frac{1}{2}$ or $4\frac{3}{4} \times 6\frac{1}{2}$ plates, each75
Eastman Plate Tank Developer Powders, for 4×5 tank, per package, $\frac{1}{2}$ dozen20
Ditto, for 5×7 tank, per package, $\frac{1}{2}$ dozen35
Kodak Acid Fixing Powder, per 1 pound package25
Ditto, per $\frac{1}{2}$ pound15

The Kodak Metal Tripod

COMBINING light weight and compactness with exceptional rigidity, this is an ideal tripod for cameras up to 5 x 7.

Has telescoping legs of brass tubing—lower ones nicked—the upper black enameled, and should a part become inoperative through wear or accident, any section may be removed for repairs. A unique feature.

When extended each section catches and holds firmly. To close, it is necessary to press in top catch only.

The Nos. 1 and 2 have revolving heads for attaching to camera. With this construction the camera may be swung, so as to take in the desired view without moving the tripod.

The Nos. 1 and 2 also have straps for holding the legs in place when closed.

	Closed ins.	Extended ins.	Weight ozs.	Price
Kodak Metal Tripod				
No. 0, 3 sections . . .	15½	39½	15	\$1.60
No. 1, 4 sections . . .	15	48½	24½	2.50
No. 1C, 4 sections . .	15¼	48¾	25½	2.25
No. 2, 5 sections . . .	13½	49½	25	3.25
No. 2C, 5 sections . .	13¾	49¾	26	3.00
Leatherette case for No. 075
Leather carrying case for any style				1.50

Premo Film Pack Adapters

Size	Price
3¼ x 4¼	\$1.00
3 x 5¼	1.50
3A (3¼ x 5½)	1.50
4 x 5	1.50
5 x 7	2.50

ROCHESTER OPTICAL DIVISION

Eastman Kodak Company

ROCHESTER, N. Y.

12.00
THE CRANSTON COMPANY

158 MAIN ST.

NORWICH, CONN.