

Nikon FE2. The camera that  
advanced photographers advance to.



**FE2**



# Why the FE2 lets you take



If you bought a beginner's camera a few years ago, you probably don't consider yourself a beginner today. Because in the short time you've been taking pictures, your photographic talents have come a long way. So Nikon designed the FE2 with a number of advanced features that can help you go even further.

Like a vertically traveling electronically controlled titanium



shutter with a top speed of 1/4000 sec. That's twice as fast as any other 35mm automatic SLR. So it stops action better, and provides broader exposure capability in brighter lighting conditions.

The top flash sync speed of 1/250 sec. reduces the ghost images that haunt flash photographers. While through-the-lens flash metering (with Nikon Speedlight) assures that every flash picture gets the correct exposure.

The FE2 chassis is made of spe-

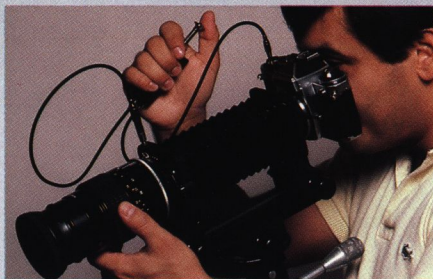


more advanced pictures.



There's a match needle manual mode that gives you total control, and an aperture preferred auto-automatic mode that makes quick candid shots a lot easier.

The FE2 even offers an optional motor drive that lets you shoot up to 3.2 frames-per-second. Interchangeable focusing screens that let you get a better view of close-up, telephoto and architectural photography. And an unequalled system of nearly

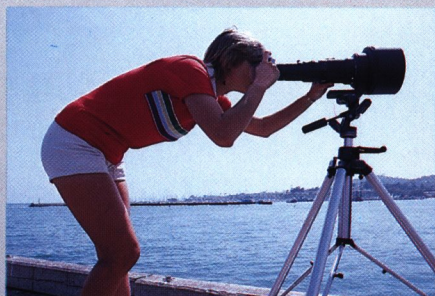
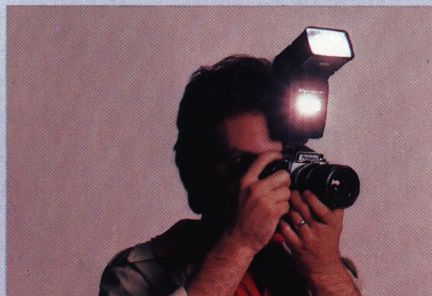


70 Nikkor and Nikon Series E micro-close-up, wide angle, fisheye, telephoto, zoom and specialty lenses.

You won't find this combination of advanced features on any other camera.

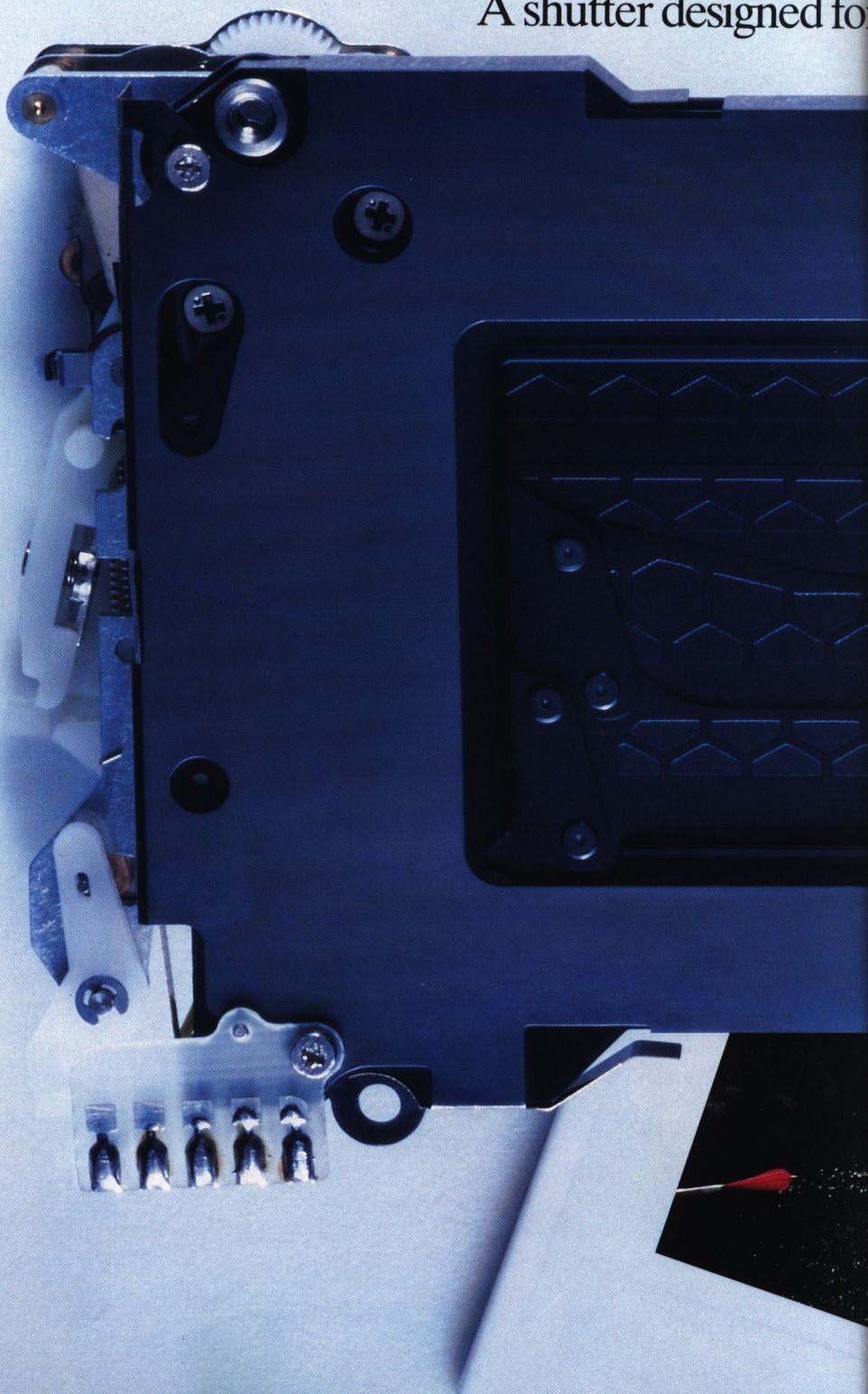
Which is precisely why the FE2 is the one camera you can advance to. And advance with for years to come.

cial copper silumin aluminum alloy that provides added strength without adding a lot of weight. And this helps give the FE2 that special "Nikon feel."





A shutter designed for



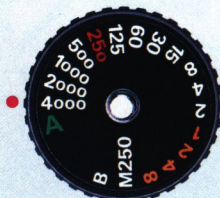


# exceptional performance at high speed.

To increase shutter speeds to a lightning fast 1/4000 sec. Nikon engineers developed the world's only vertically traveling honey-combed etched titanium shutter.

This remarkable innovation lets the FE2 take high speed, action-stopping photographs like the one you see here.

But this incredible shutter is designed to do a lot more than just stop action.



Because of its light weight and low mass, shutter vibration is virtually eliminated. So you'll get sharper results when shooting with telephoto or close-up lenses.

You'll also get more depth of field control when you shoot in bright sunlight, especially with the new ASA 1000 speed films. Because the high shutter speed lets you select from a wider range of lens apertures.

And best of all, whether you shoot on automatic or manual, the electronically controlled shutter remains stable at speeds from 1/4000 sec. all the way down to 8 full seconds.





# A 1/250 sec. sync speed: The fastest way to eliminate ghosts.



The titanium shutter on the FE2 permits electronic flash photography at top speed of 1/250 sec. — a feat previously accomplished only with very bulky (and very expensive) large and medium format cameras.

This high sync speed reduces the effects of brighter ambient

light to help eliminate the fuzzy ghost images that haunt your flash exposures.

But the FE2 not only allows you to stop action better with a flash, it also gives you better balance between daylight and “flash light” during fill-flash photography. That’s because the wider range of flash sync speeds let you choose from a wider range of lens apertures when shooting outdoors.





# TTL Flash Metering: The easiest way to more accurate flash exposures.



flash metering, the FE2 lets you choose from a wider range of lens apertures. Which allows you to control the depth of field as well as flash recycling time.

After every shot, a red LED signals you when the flash is ready for the next shot (often in less than one second) or blinks to warn of a possible underexposure.

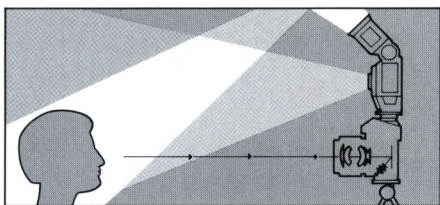
Combining the FE2 with one of the advanced Nikon Speedlight units gives you the ability to use the FE2's TTL flash metering. And that gives you a better shot at great flash pictures. Because with TTL, the light coming from the flash is measured in the most accurate way possible...not by an external sensor on the flash unit, *but as it actually passes through the camera lens*. And that makes flash photography a lot simpler, because all you have to do is set the lens aperture, focus and shoot.

And unlike cameras without TTL

And if you choose to record the effects of available light in your flash pictures, the FE2 lets you shoot at sync speeds lower than a 1/250 sec. without losing TTL capability.

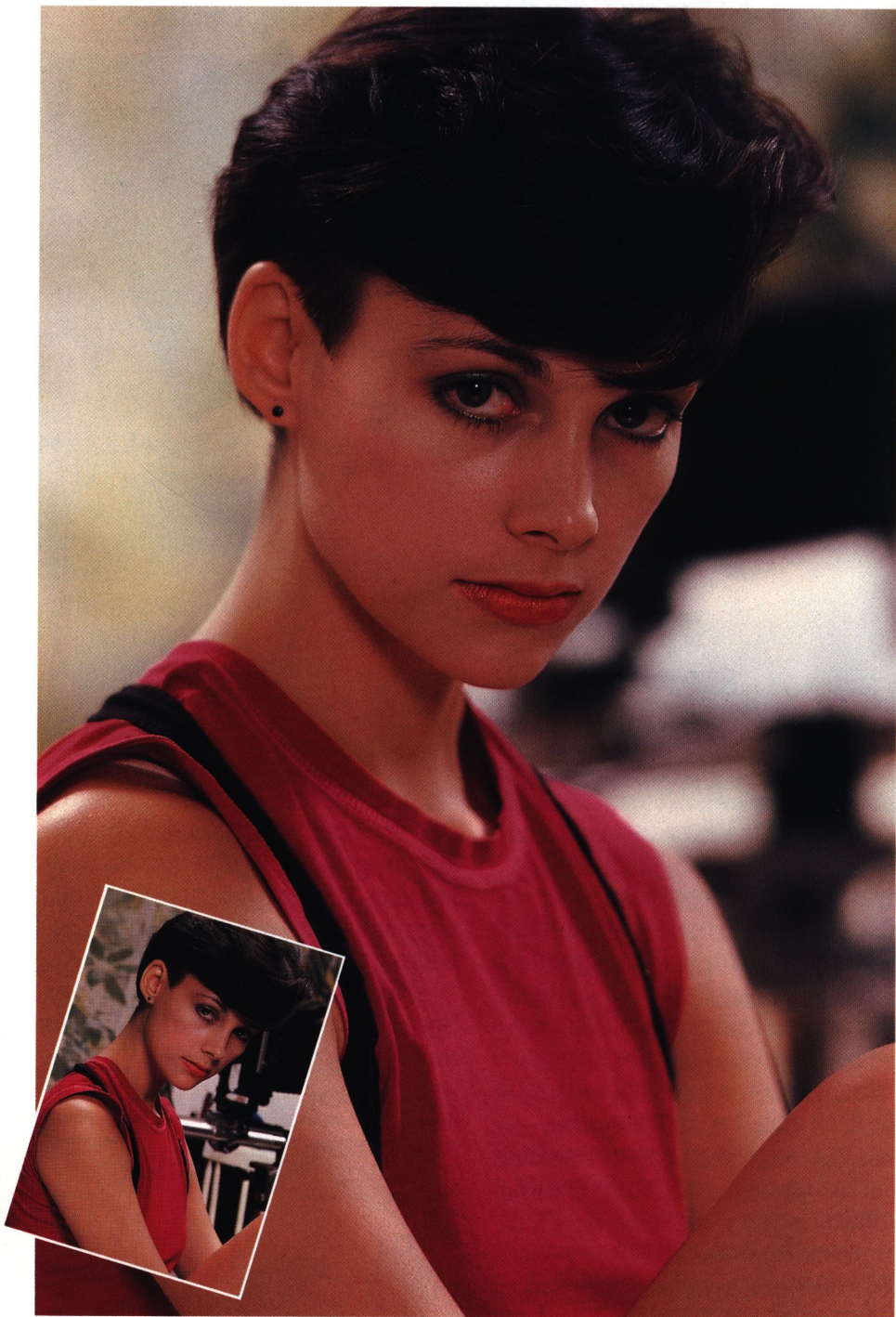
You can even link multiple Nikon Speedlights together using the Nikon multi-flash cord system.

*Nikon's automatic TTL metering system makes flash pictures as foolproof as existing light pictures.*





An automatic mode





# hat actually enhances your creativity.

On automatic, the aperture ring provides creative control over both depth of field and shutter speed. You select the aperture, and the FE2 automatically and steplessly chooses the proper shutter speed.



But the FE2 has other ways to let you put your creativity on automatic.

There's a memory lock lever. With just a touch, it "locks in" the shutter speed and keeps it from changing when you change the lens aperture. That's what

*Exposure memory lock freezes automatic shutter speed setting for selective metering or quick exposure bracketing.*

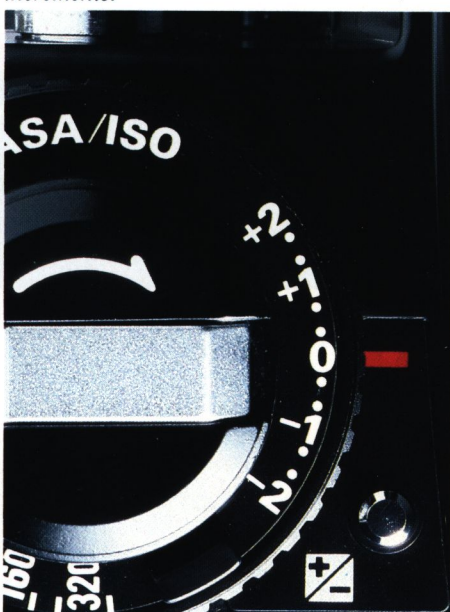


makes the FE2 ideal for fast "bracketing": the technique of deliberately over and underexposing a picture to achieve a desired creative effect.

There's also an exposure compensation dial that gives you extra control under difficult lighting conditions. So in situations where your subject might otherwise be incorrectly exposed—like snow scenes or dimly lit stages—the exposure compensation dial biases the exposure system to give you a better picture.

And to make sure you don't forget you're shooting with exposure compensation, an LED in the viewfinder lights up whenever the compensation dial is switched from the zero position.

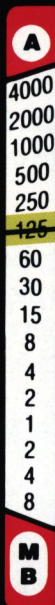
*Exposure compensation dial biases meter reading by  $\pm 2$  EV in precise  $\frac{1}{3}$ -step increments.*





Complete manual control right before

5.6





your eyes.



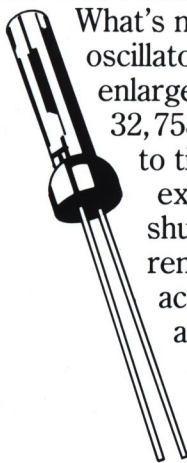
When you want total control over every aspect of picture taking, you can use the FE2 on manual.

Inside the viewfinder, a match needle metering system tells you the shutter speed the camera recommends as well as the speed you've selected. So you can make all exposure adjustments without taking your eye away from the



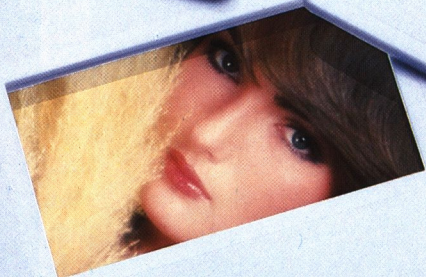
viewfinder. (The FE2 is one of the few automatic cameras to offer this "true manual" operation.)

What's more, a quartz oscillator (shown here enlarged) vibrates at 32,758 pulses-per-sec. to time all manual exposures. So shutter speeds remain consistently accurate picture after picture, year after year.



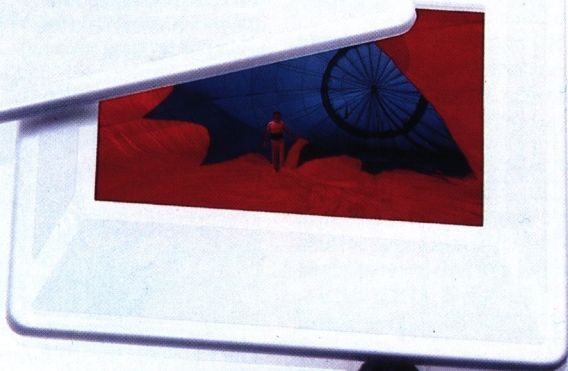
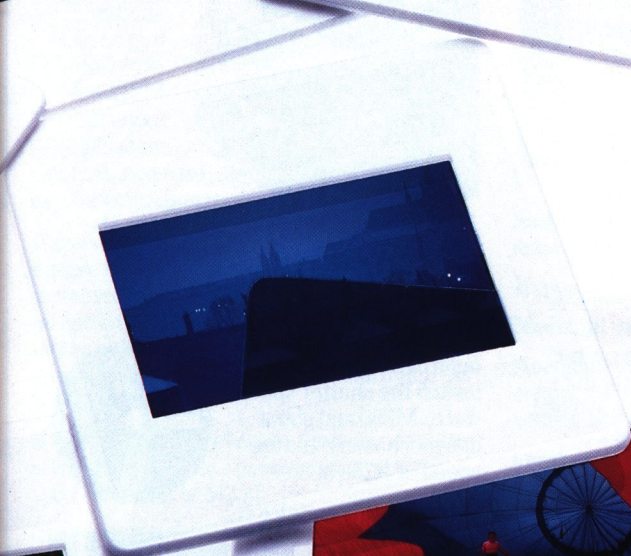
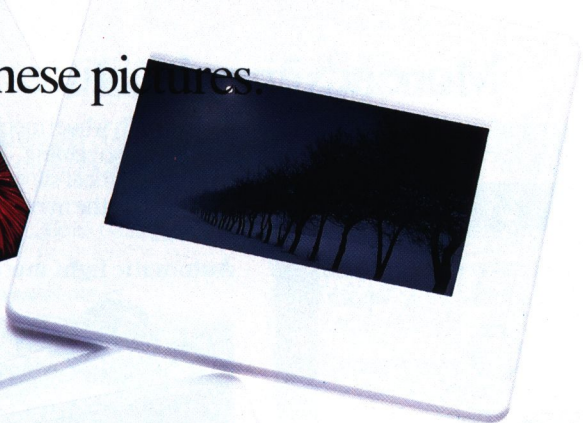


No other automatic SLR





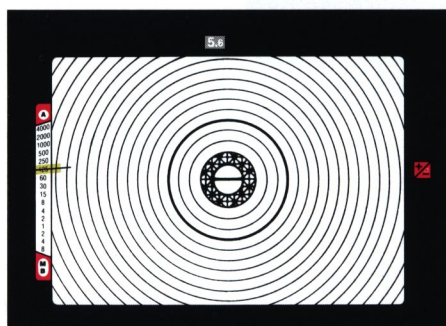
can take all these pictures.



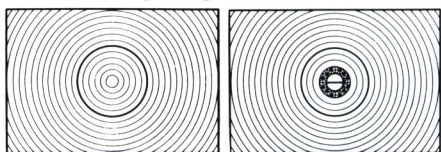


# More advanced features.

## A brighter viewfinder with interchangeable focusing screens.

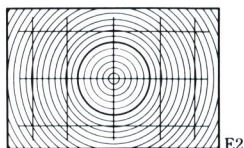


The FE2 comes with a Type K2 focusing screen that's approximately one stop brighter than the standard Type K screen. So you'll see all your images brightly and clearly, even in dim light. For close-ups or long telephoto shots, optional Type B2 offers an unobstructed view in the center. And Type E2 with etched horizontal and vertical lines, is ideal for architectural work. All screens slip into place in seconds.



B2

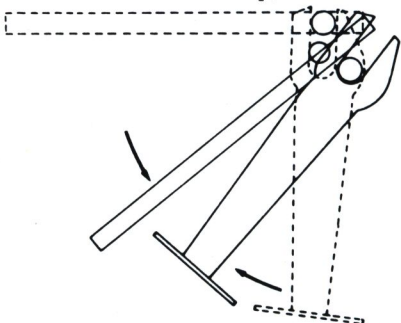
K2



E2

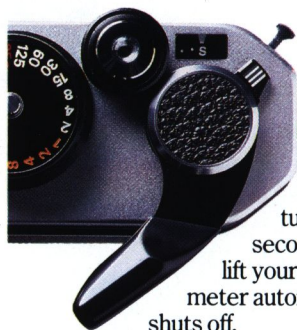
## Flywheel mechanism for vibration-free mirror-up.

There's virtually no vibration and bounce when the mirror moves up, thanks to an



ingenious flywheel mechanism linked to the mirror-up movement. The inertia of the rotating flywheel suppresses any bounce or flutter when the mirror reaches the up position.

## Automatic light meter shut-off.



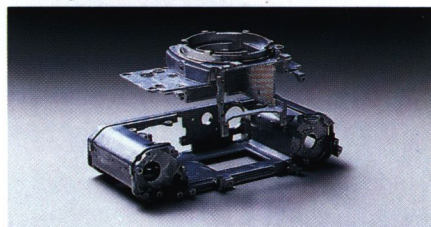
When you depress the shutter button half-way, the FE2's light meter automatically turns on. And 16 seconds after you lift your finger, the meter automatically shuts off.

## Back-up mechanical shutter.

When you're caught without a battery, you can switch the shutter speed dial to M250 and shoot at a mechanical shutter speed of 1/250 sec.



## A body built to take it.



The FE2 gets its strength from a copper silumin aluminum alloy that ignores the effects of temperature and humidity. It's remarkably light yet incredibly strong to stand up to professional wear and tear.

## Smoothest film advance.

The FE2 features the smoothest and most efficient film transport mechanism of any camera in its class. Four clusters of ball bearings reduce film torque and assure smooth, efficient winding.





# FE2 Specifications

**Type of camera** Electronically controlled 35mm single-lens reflex (SLR) focal plane shutter camera

**Picture format** 24mm x 36mm (standard 35mm film format)

**Lens mount** Nikon bayonet mount

**Lenses usable** More than 60 interchangeable Nikon lenses

**Shutter** Electronically controlled vertical-travel, metal-focal-plane shutter with titanium curtains

**Shutter release** Mechanical; shutter release button locked when film advance lever is flush with camera body

**Exposure meter switch** Pressing shutter release button halfway switches meter on; meter stays on for 16sec. after finger is taken off button, then automatically switches off; meter automatically turned off when shutter speed dial is set to M250 or B or until frame "1" is reached

**Backup shutter release** Mechanical shutter release (at 1/250sec.) possible when shutter speed dial is set to M250

**Shutter speed settings** A (Auto), 1/4000sec. to 8sec., M250 (1/250sec.), B (Bulb)

**Exposure control** Auto exposure control when set on A; Manual exposure control by turning shutter speed/mode setting dial and lens aperture ring to match black and green needles inside viewfinder

**Exposure metering** Through-the-lens (TTL) center-weighted full aperture exposure measuring system using a pair of SPD's (silicon photodiode)

**Metering range** EV 1 to EV 18 (f1.4 at 1sec. to f8 at 1/4000sec. with 50mm f1.4 lens at ASA/ISO 100)

**Exposure compensation** Via dial provided; —2 EV to +2 EV in one-third increments

**Film speed range** ASA/ISO 12 to 4000

**Shutter speeds** On Auto: stepless speeds from 8 to 1/4000sec. On Manual: 16 quartz-controlled speeds from 8 to 1/4000sec. On Mechanical: M250 (1/250sec.); B for long exposure

**Film advance lever** Single-stroke type; 30° stand-off angle and 135° winding angle

**Shutter release lock** When film advance lever is flush with camera body

**Viewfinder** Fixed eyelevel pentaprism type, 0.86X magnification with 50mm lens set at infinity, 93% frame coverage

**Viewfinder display** Shutter speed scale, ADR aperture f-number in use, exposure compensation mark, meter needle (black), shutter speed/exposure mode indication needle (green), outside-exposure-range warning marks

**Focusing screen** Interchangeable

**Self-timer** Mechanical type; approx. 10sec. delay exposure; setting "cancellable"

**Exposure memory lock** Via self-timer lever

**Multiple exposure** Via lever

**Accessory shoe** Standard ISO type; four contacts provided; TTL automatic flash output control, hot-shoe, ready-light and monitor contacts

**Flash synch** On Auto: 1/250sec. On Manual: Sync with electronic flash unit at 1/250sec. or lower, or at 1/250sec. only when shutter speed dial is set between 1/500sec. and 1/4000sec.

**Ready-light** LED visible inside viewfinder; lights up when SB-16B, SB-15 or SB-E Speedlight Unit is fully charged; blinks to indicate shutter speed is set to 1/500sec. or faster; blinks to warn that the distance between subject and SB-16B or 15 Speedlight reaches the working limitation of SB-16B or SB-15 on TTL mode, etc.

**Power source** Three types usable; 1.55 V silver-oxide battery (S-76 or SR-44 type) x 2  
3V lithium battery (CR-1/3N type) x 1  
1.5V alkaline-manganese battery (LR-44 type) x 2; optional Anti-Cold Battery Holder DB-2 accepting two AA-type penlight batteries available

**Depth-of-field preview lever** Lever provided

**Camera back** Interchangeable with MF-16 or MF-12 Data Back; pops open when the film rewind knob is pulled up as camera backlock is pushed counterclockwise; hinged type; memo holder provided

**Size (body only)** 5.6" x 3.5" x 2.3"

**Weight (body only)** 19.4 oz.



# The Nikon system helps the advanced

As good as you'll become using the FE2, you'll become even better when you use it along with the Nikon system. Because Nikon offers the most comprehensive system of lenses, equipment and accessories in 35mm SLR photography. Shown here are just a few examples of optional equipment compatible with the FE2.



photographer go even further.

### Motor Drive.

The Nikon MD-12 Motor Drive couples directly to the FE2 camera body and features a comfortable handgrip for better control when you use long telephoto lenses. Just set the firing mode selector to "S" for single frame shooting, or "C" for continuous

operation at up to 3.2 frames-per-sec. The MD-12 can be used with various Nikon remote control accessories such as Modulite, and its automatic "power-off" system makes it very efficient. A set of eight "AA" penlight batteries can power about 50 36-exposure rolls of film.





## Electronic Flash.

Nikon offers a choice of dedicated electronic flash units that provide TTL metering with the FE2.

There's the compact SB-15, and the more powerful SB-16B. Both let you shoot in sync with the MD-12 motor drive at over 3 frames-per-sec. They also feature heads that adjust vertically or horizontally so you can vary the degree of bounce to soften and diffuse the lighting. The SB-16B even has a secondary flash to fill in shadows for more realistic bounce-flash portraits.

## Data Back.

The slim and lightweight MF-16 data back takes the place of the FE2's regular camera back. It allows you to record your choice of Year/Month/Day/or Day/Hour/Minute on all your pictures. And it can be used with the MD-12 motor drive. The MF-16 data back also doubles as a quartz timepiece with built-in alarm.



## Nikon Lenses.

Nikon offers nearly 70 lenses for use with the FE2, everything from a 6mm fisheye which actually sees backwards, to an astounding 2000mm super telephoto. And Nikon produces its own optical glass, something few companies do. This way, each lens achieves optimum sharpness and clarity. In addition, all lens bayonet mounts are made of chrome-plated brass which is more durable than aluminum. So you're assured of the precise camera/lens alignment essential to great photography.

## Take the world's best pictures from your mailbox.

Nikon World Magazine is a quarterly publication devoted to the art of photography. Each issue brings you magnificent portfolios and helpful picture-taking tips. A year's subscription includes three seasonal editions plus one calendar issue. To subscribe, send \$6.50 to: Nikon World, P.O. Box 520L, Garden City, NY 11530.





Nikon Inc., Garden City, New York 11530

**Nikon**

We take the world's  
greatest pictures.™

