



KODAK

# Exclusively Eastman

**W**HETHER it's motor trip, picnic party, or a quiet day at home, you'll use a Kodak to keep the fun in pictures.

And you'll use the autographic attachment, the device that remembers for you the date you made the picture. This feature, exclusively Eastman, comes on all Kodaks and Folding Brownies. It permits writing information you want to keep, in the film margin at the time the picture is made, before you forget. And autographic film costs no more than regular film.

To find the right Kodak or Brownie for your use, read the following pages. Then see the actual cameras at your Kodak dealer's.

EASTMAN KODAK COMPANY  
ROCHESTER, N. Y.

*May 1925*

# Vest Pocket Autographic Kodaks

(Regular and *Special* Models)

**T**HE Vest Pocket Kodak, so small that you can wear it like a watch, is a photographic prodigy.

Regular models, fixed focus, are in action in an instant. You get the picture before it gets away.

*Special* models, focusing, boast two outstanding features. The lens, Kodak Anastigmat *f*.7.7 or *f*.6.9, makes sharp negatives, fine for enlarging. And a finger-tip turn of the lens mount sets the focus for any of ten distances, beginning with three foot close-ups.

Shutter speeds are  $\frac{1}{25}$ ,  $\frac{1}{50}$ , *time* and *bulb*. Even on this little camera you'll find the autographic feature.

## DESCRIPTIVE DETAILS

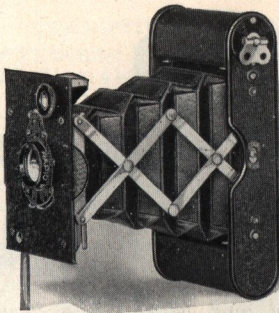
SIZE OF PICTURES:  $1\frac{5}{8}$  x  $2\frac{1}{2}$  inches. SIZE OF KODAK:  $1$  x  $2\frac{3}{8}$  x  $4\frac{3}{4}$  inches.

CAPACITY: 8 exposures. WEIGHT: 11 ounces.

FOCUS: Regular, fixed; *Special*, adjustable.

LENSES: Regular, with Meniscus Achromatic, or Rapid Rectilinear of  $3\frac{1}{4}$ -inch focus; *Special*, with Kodak Anastigmat *f*.7.7 or *f*.6.9,  $3\frac{3}{8}$ -inch focus.

SHUTTER: Kodak Ball Bearing No. 0 with finger release only. (Cable release attachment sold separately.)



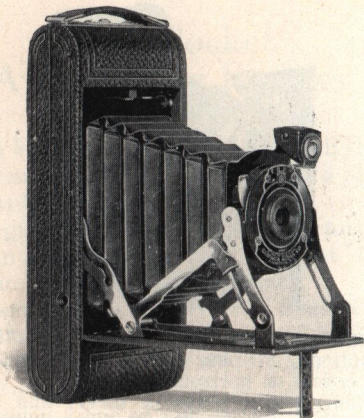
**SPEEDS:**  $\frac{1}{25}$ ,  $\frac{1}{50}$  second; time and "bulb" actions. **FINDER:** Brilliant, reversible for vertical or horizontal pictures.

**FINISH:** Metal parts in nickel and black enamel. Black bellows. Autographic feature. All metal body. Regular, with Japan crystal finish; *Special*, covered with Morocco grain leather.

### PRICES

VEST POCKET AUTOGRAPHIC KODAK, Regular (fixed focus) with Meniscus Achromatic Lens	\$6.50
With Rapid Rectilinear Lens	8.00
VEST POCKET AUTOGRAPHIC KODAK, <i>Special</i> (focusing) with Kodak Anastigmat <i>f.7.7</i> Lens	13.00
With Kodak Anastigmat <i>f.6.9</i> Lens	15.00
Leather Case for Vest Pocket Kodak	.90
Leather Case with Carrying Strap	1.00
Belt Carrying Case (russet leather)	1.25
Autographic Film Cartridge, 8 exposures (No. A 127)	.25
Vest Pocket Kodak Cable Release Attachment	.50
Vest Pocket Kodak Tripod Adapter	.50
Kodak Portrait Attachment for Meniscus Lens	.50
Kodak Portrait Attachment for R. R. Lens (p. 32)	.75
Kodak Self Timer (see p. 32)	1.25

*The prices of cameras and film include the Excise Tax*



## Nos. 1 and 1A Pocket Kodaks Series II

*(Fixed Focus Models)*

**T**HREE reasons why you'll like the Pocket Kodaks, Series II, and the pictures they make: the motion that opens the camera puts the lens into place. Focus is fixed; you're ready to "click" the shutter the instant the camera bed is dropped. And with the reliable lens is combined the new Kodex shutter, speeds  $1/25$ ,  $1/50$ , *time* and *bulb*.

## DESCRIPTIVE DETAILS

**SIZE OF PICTURES:** No. 1,  $2\frac{1}{4} \times 3\frac{1}{4}$  inches;  
 No. 1A,  $2\frac{1}{2} \times 4\frac{1}{4}$  inches. **SIZE OF KODAK:**  
 No. 1,  $1\frac{5}{16} \times 3\frac{1}{16} \times 6\frac{7}{16}$  inches; No. 1A,  
 $1\frac{9}{16} \times 3\frac{5}{16} \times 8$  inches.

**CAPACITY WITHOUT RELOADING:** No. 1, 6 exposures; No. 1A, 12 exposures.

**WEIGHT:** No. 1, 16 ounces; No. 1A, 22 ounces.

**FOCUS:** Fixed.

**LENS:** Meniscus Achromatic.

**SHUTTER:** Kodex with finger release.

**SPEEDS:**  $\frac{1}{25}$  and  $\frac{1}{50}$  second, as well as time and "bulb" actions.

**FINDER:** Brilliant; reversible for horizontal or vertical pictures.

**BODY:** Aluminum.

**COVERING:** No. 1, Levant grain leather; No. 1A, fine seal-grain leather.

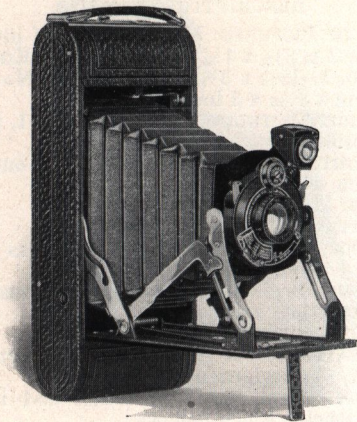
**FINISH:** Metal parts in nickel and black enamel. Black bellows.

**MISCELLANEOUS:** Autographic feature, countersunk. Two tripod sockets.

## PRICES

	No. 1	No. 1A
POCKET KODAK, SERIES II (fixed focus), with Meniscus Achromatic Lens and Kodex Shutter . . . .	\$13.50	\$15.00
Black Sole Leather Case, with strap . . . .	2.50	3.00
Autographic Film Cartridge, 12 exposures (No. A 116) for No. 1A . . . .		.60
Ditto, 6 exposures (No. A 120) for No. 1; (No. A 116) for No. 1A . . . .	.25	.30
Kodak Portrait Attachment (see p. 32) . . . .	.75	.75
Kodak Self Timer (see p. 32) . . . .	1.25	1.25
Cable Release for use when opened . . . .	.35	.35

*The prices of cameras and film include the Excise Tax*



## Nos. 1 and 1A Pocket Kodaks Series II

*(Focusing Models)*

**C**AMERAS that work extra easily and make extra good pictures.

Self-erecting front puts the lens in picture position as you pull the camera open. Focus is at your finger tips. Two equipment combinations are available: Kodak Anastigmat lens  $f.7.7$  in Diomatic shutter, speeds  $1/10$ ,  $1/25$ ,  $1/50$ ,  $1/100$ ; and the new Kodar  $f.7.9$  in the new Kodex shutter, speeds  $1/25$ ,  $1/50$ .

## DESCRIPTIVE DETAILS

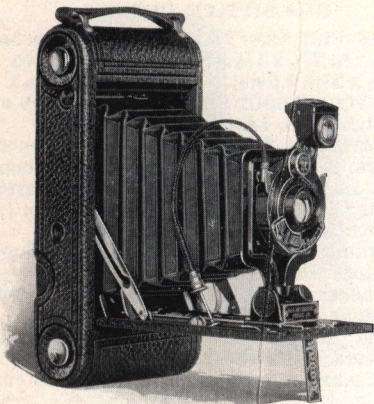
**SIZE OF PICTURES:** No. 1,  $2\frac{1}{4} \times 3\frac{1}{4}$  inches; No. 1A,  $2\frac{1}{2} \times 4\frac{1}{4}$ . **SIZE OF KODAK:** No. 1,  $1\frac{5}{16} \times 3\frac{1}{16} \times 6\frac{7}{16}$ ; No. 1A,  $1\frac{9}{16} \times 3\frac{5}{16} \times 8$ . **CAPACITY WITHOUT RELOADING:** No. 1, 6 exposures; No. 1A, 12 exposures. **WEIGHT:** No. 1, 17 ounces; No. 1A, 23 ounces. **LENSES:** Kodar *f*.7.9—No. 1,  $4\frac{3}{8}$ -inch focus; No. 1A,  $5\frac{1}{4}$ -inch focus; or Kodak Anastigmat, *f*.7.7—No. 1,  $4\frac{1}{4}$ -inch focus; No. 1A, 5-inch focus. **FOCUS:** Adjustable. **SHUTTERS:** Kodex or Diomatic with finger release. **SPEEDS:** Kodex,  $\frac{1}{25}$  and  $\frac{1}{50}$ ; Diomatic,  $\frac{1}{10}$ ,  $\frac{1}{25}$ ,  $\frac{1}{50}$ ,  $\frac{1}{100}$ ; both with time and "bulb" actions. **FINDER:** Brilliant; reversible for horizontal or vertical pictures. **BODY:** Aluminum. **Covering:** No. 1, Levant grain leather; No. 1A, fine seal-grain leather. **FINISH:** Metal parts in nickel and black enamel. Black bellows. **MISCELLANEOUS:** Autographic feature, countersunk. Two tripod sockets.

## PRICES

POCKET KODAK, SERIES II (focusing model), with Kodar Lens <i>f</i> .7.9 and Kodex Shutter . . . . .	No. 1	No. 1A
	\$17.00	\$19.00
With Kodak Anastigmat Lens <i>f</i> .7.7 and Diomatic Shutter . . . . .	24.00	26.00
Black Sole Leather Case, with strap . . . . .	2.50	3.00
Autographic Film Cartridge, 12 exposures (No. A 116) for No. 1A . . . . .		.60
Ditto, 6 exposures (No. A 120) for No. 1; (No. A 116) for No. 1A . . . . .	.25	.30
Kodak Portrait Attachment (see p. 32) . . . . .	.75	.75
Kodak Self Timer (see p. 32) . . . . .	1.25	1.25
Cable Release for use when open . . . . .	.35	.35

*The prices of cameras and film include the Excise Tax*





## Nos. 1 and 1A Autographic Kodak Juniors

**KODAK** Juniors are well made, easy to use, equipped for good pictures. And they're reasonably priced.

Both the Nos. 1 and 1A Juniors are offered with fixed and adjustable focus. The models with Kodak Anastigmat lens  $f.7.7$  and Diomatic shutter give you a lot more picture-making ability for only a little more cost.

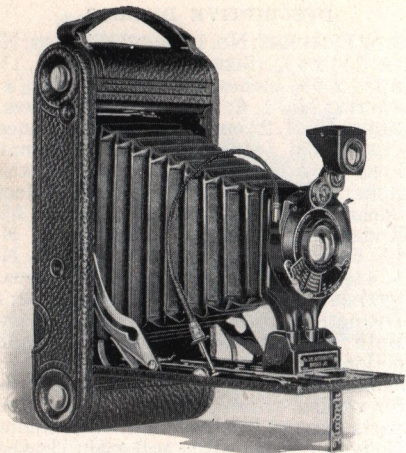
## DESCRIPTIVE DETAILS

**SIZE OF PICTURES:** No. 1,  $2\frac{1}{4} \times 3\frac{1}{4}$  inches; No. 1A,  $2\frac{1}{2} \times 4\frac{1}{4}$ . **SIZE OF KODAK:** No. 1,  $1\frac{7}{16} \times 3\frac{5}{8} \times 6\frac{5}{8}$  inches; No. 1A,  $1\frac{5}{8} \times 3\frac{3}{4} \times 8$ . **CAPACITY:** No. 1, 6; No. 1A, 12 exposures. **WEIGHT:** No. 1, 22 ounces; No. 1A, 28 ounces. **FOCUS:** Fixed (with Meniscus Achromatic Lens); or Adjustable (with any listed lens). **LENSES:** Meniscus Achromatic; Rapid Rectilinear, No. 1,  $4\frac{3}{8}$ -inch focus; No. 1A,  $5\frac{3}{8}$ ; Kodar *f.7.9*, No. 1,  $4\frac{3}{8}$ -inch focus; No. 1A,  $5\frac{1}{4}$ ; or Kodak Anastigmat, *f.7.7*, No. 1,  $4\frac{1}{4}$ -inch focus; No. 1A, 5-inch focus. **SHUTTERS:** Kodex, speeds  $\frac{1}{25}$ ,  $\frac{1}{50}$  second; or Diomatic, speeds  $\frac{1}{10}$ ,  $\frac{1}{25}$ ,  $\frac{1}{50}$ ,  $\frac{1}{100}$  second. Both shutters with time and "bulb" actions, and cable and finger release. **MISCELLANEOUS:** Brilliant finder, reversible for vertical or horizontal pictures. Metal parts finished in nickel and black enamel. Body covered with seal-grain leather. Black bellows. Autographic feature. Two tripod sockets.

## PRICES

	No. 1	No. 1A
AUTOGRAPHIC KODAK JUNIOR (fixed focus) with Meniscus Achromatic Lens and Kodex Shutter . . . . .	\$12.00	\$13.00
Focusing Model with Meniscus Achromatic Lens and Kodex Shutter . . . . .	12.00	13.00
With Rapid Rectilinear Lens . . . . .	14.00	15.00
With Kodar Lens <i>f.7.9</i> . . . . .	15.00	16.00
With Kodak Anastigmat Lens <i>f.7.7</i> and Diomatic Shutter . . . . .	23.00	24.00
Black Sole Leather Case, with strap . . . . .	3.00	3.00
Autographic Film Cartridge, 12 exposures (No. A 116) for No. 1A . . . . .		.60
Ditto, 6 exposures (No. A 120) for No. 1; (No. A 116) for No. 1A . . . . .	.25	.30
Kodak Portrait Attachment (see p. 32) . . . . .	.75	.75
Kodak Self Timer (see p. 32) . . . . .	1.25	1.25

*The prices of cameras and film include the Excise Tax*



## Nos. 2C and 3A Autographic Kodak Juniors

WITH these cameras you get large pictures:  $2\frac{7}{8} \times 4\frac{7}{8}$  with the No. 2C, and  $3\frac{1}{4} \times 5\frac{1}{2}$ , postcard size, with the No. 3A. But they are genuine Juniors, simple, sure picture-makers, moderately priced.

The Nos. 2C and 3A Kodak Juniors have adjustable focus and are available with two different shutters and four different lenses.

## DESCRIPTIVE DETAILS

**SIZE OF PICTURES:** No. 2C,  $2\frac{7}{8} \times 4\frac{7}{8}$  inches; No. 3A,  $3\frac{1}{4} \times 5\frac{1}{2}$ . **SIZE OF KODAK:** No. 2C,  $1\frac{3}{4} \times 4\frac{3}{8} \times 8\frac{3}{4}$  inches; No. 3A,  $1\frac{15}{16} \times 5\frac{1}{8} \times 9\frac{3}{4}$ .

**CAPACITY:** Both, 10 exposures.

**WEIGHT:** No. 2C,  $33\frac{1}{2}$  ounces; No. 3A,  $36\frac{1}{2}$  ounces.

**FOCUS:** Adjustable, with automatic focusing lock.

**LENSES:** Meniscus Achromatic; Rapid Rectilinear, No. 2C,  $5\frac{5}{8}$ -inch focus; No. 3A,  $6\frac{5}{8}$ -inch focus; Kodar  $f.7.9$ , No. 2C,  $6\frac{1}{4}$ -inch focus; No. 3A,  $6\frac{7}{8}$ -inch focus; or Kodak Anastigmat,  $f.7.7$ ; No. 2C, 6-inch focus; No. 3A,  $6\frac{3}{4}$ -inch focus.

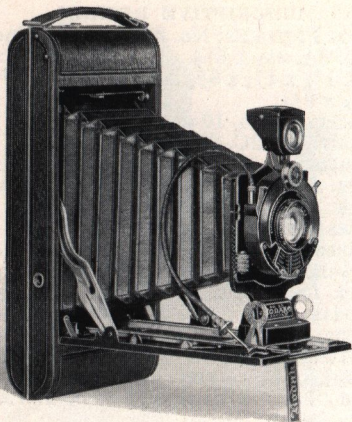
**SHUTTERS:** Kodex,  $\frac{1}{25}$ ,  $\frac{1}{50}$  second; or Diomatic,  $\frac{1}{10}$ ,  $\frac{1}{25}$ ,  $\frac{1}{50}$ ,  $\frac{1}{100}$  second. Both with time and "bulb" actions, and cable and finger release.

**MISCELLANEOUS:** Brilliant, reversible finder. Back and bed of aluminum, covered with fine seal-grain leather. Metal parts finished in nickel and black enamel. Black bellows. Autographic feature. Two tripod sockets.

### PRICES

AUTOGRAPHIC KODAK JUNIOR with	No. 2C	No. 3A
Meniscus Achromatic Lens and Kodex Shutter . . . . .	\$16.00	\$17.50
With Rapid Rectilinear Lens . . . . .	18.00	20.00
With Kodar Lens $f.7.9$ . . . . .	19.00	21.00
With Kodak Anastigmat Lens $f.7.7$ and Diomatic Shutter . . . . .	27.00	29.00
Black Sole Leather Case, with strap . . . . .	3.25	3.75
Autographic Film Cartridge, 10 exposures (No. A 130) for No. 2C; (No. A 122) for No. 3A . . . . .	.75	.90
Ditto, 6 exposures . . . . .	.45	.55
Kodak Portrait Attachment (see p. 32) . . . . .	.75	.75
Kodak Self Timer (see p. 32) . . . . .	1.25	1.25

*The prices of cameras and film include the Excise Tax*



## Nos. 1A and 2C Kodaks Series III

**SERIES III** Kodaks, though comparatively new, are already known for superior pictures.

Their features include Kodak Anastigmat lens  $f.7.7$ , for sharp-cut negatives; lever focus, for easy control with the thumb, and Diomatic shutter for accuracy, speeds  $1/10$ ,  $1/25$ ,  $1/50$ ,  $1/100$ .

Additional refinements are: sliding timing scale for correct exposure, and rising front.

## DESCRIPTIVE DETAILS

**SIZE OF PICTURES:** No. 1A,  $2\frac{1}{2} \times 4\frac{1}{4}$  inches; No. 2C,  $2\frac{7}{8} \times 4\frac{7}{8}$ . **SIZE OF KODAK:** No. 1A,  $1\frac{9}{16} \times 3\frac{5}{16} \times 8$  inches; No. 2C,  $1\frac{9}{16} \times 3\frac{7}{8} \times 8\frac{3}{4}$ .

**CAPACITY:** No. 1A, 12; No. 2C, 10 exposures.

**WEIGHT:** No. 1A,  $26\frac{1}{2}$  ounces; No. 2C, 32 ounces.

**FOCUS:** Adjustable only, with lever focusing device.

**LENS:** Kodak Anastigmat  $f.7.7$ —No. 1A, 5-inch focus; No. 2C, 6-inch focus.

**SHUTTER:** Diomatic, with cable and finger release.

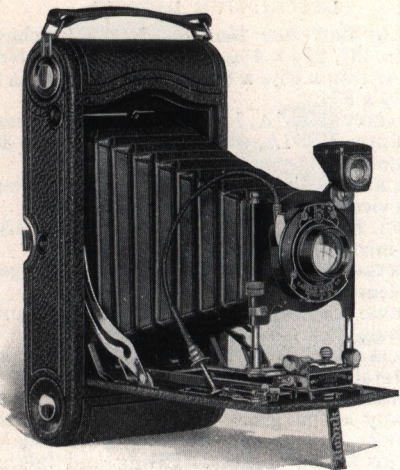
**SPEEDS:**  $\frac{1}{10}$ ,  $\frac{1}{25}$ ,  $\frac{1}{50}$ ,  $\frac{1}{100}$ , as well as time and "bulb" actions.

**MISCELLANEOUS:** Brilliant, reversible finder. Metal parts finished in nickel and black enamel. Body of aluminum, covered with baby crepe grain cowhide. Black bellows. Autographic feature, countersunk. Two tripod sockets. Rising and falling front.

### PRICES

	No. 1A	No. 2C
KODAK, SERIES III, with Kodak Anastigmat Lens $f.7.7$ and Diomatic Shutter . . . . .	\$30.00	\$33.00
Black Sole Leather Case, with strap . . . . .	3.00	3.50
Autographic Film Cartridge, 12 exposures (No. A 116) for No. 1A; 10 exposures (No. A 130) for No. 2C . . . . .	.60	.75
Ditto, 6 exposures (No. A 116) for No. 1A; (No. A 130) for No. 2C . . . . .	.30	.45
Kodak Portrait Attachment (see p. 32) . . . . .	.75	.75
Kodak Self Timer (see p. 32) . . . . .	1.25	1.25

*The prices of cameras and film include the Excise Tax*



## Nos. 3 and 3A Autographic Kodaks

**M**ODELS adaptable for excellent pictures through a wide range. In addition to a choice of three splendid lens and shutter combinations, their equipment includes rising, sliding and falling front. The Combination Back attachment (extra) permits use of Kodak Cut Film, regular or *Super Speed* or plates, if desired.

## DESCRIPTIVE DETAILS

**SIZE OF PICTURES:** No. 3,  $3\frac{1}{4} \times 4\frac{1}{4}$  inches; No.

3A,  $3\frac{1}{4} \times 5\frac{1}{2}$ . **SIZE OF KODAK:** No. 3,  $1\frac{3}{4} \times 4\frac{1}{2} \times 7\frac{1}{2}$  inches; No. 3A,  $2 \times 4\frac{3}{4} \times 9\frac{1}{2}$ .

**CAPACITY:** No. 3, 12; No. 3A, 10 exposures.

**WEIGHT:** No. 3, 30 ounces; No. 3A, 40 ounces.

**FOCUS:** Adjustable, automatic focusing lock.

No. 3A has double scale for film or plates.

**LENSES:** Rapid Rectilinear, No. 3A,  $6\frac{5}{8}$ -inch focus; Kodar *f.7.9*, No. 3,  $5\frac{1}{4}$ -inch focus; No. 3A,  $6\frac{7}{8}$ -inch focus; or Kodak Anastigmat *f.7.7*, No. 3, 5-inch focus; No. 3A,  $6\frac{3}{4}$ -inch focus.

**SHUTTERS:** Kodex,  $\frac{1}{25}$ ,  $\frac{1}{50}$  second; or Diomatic,  $\frac{1}{10}$ ,  $\frac{1}{25}$ ,  $\frac{1}{50}$ ,  $\frac{1}{100}$ . Both with time and "bulb" actions, and finger and cable release.

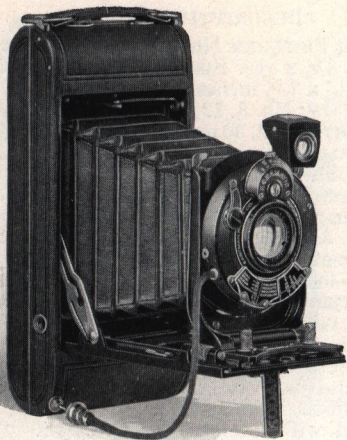
**MISCELLANEOUS:** Brilliant, reversible finder. Metal parts finished in nickel and black enamel. Back and bed of aluminum, covered with fine seal-grain leather. Black bellows. Autographic feature. Two tripod sockets. Rising, falling and sliding front.

## PRICES

	No. 3	No. 3A
Autographic Kodak with Rapid Rectilinear Lens and Kodex Shutter . . . . .		\$22.50
With Kodar Lens <i>f.7.9</i> . . . . .	\$20.00	23.50
With Kodak Anastigmat Lens <i>f.7.7</i> and Diomatic Shutter . . . . .	28.00	31.50
Black Sole Leather Case, with strap . . . . .	3.50	4.00
Combination Back . . . . .	4.00	4.00
Kodak Double Plate Holders, each . . . . .	1.50	1.50
Kodak Cut Film Sheaths, each . . . . .	.10	.15
Kodak Cut Film, regular, package of 12 . . . . .	.67	.93
Kodak Cut Film, <i>Super Speed</i> . . . . .	.77	1.03
Autographic Film Cartridge, 12 exposures (No. A 118) for No. 3; 10 exposures (No. A 122) for No. 3A . . . . .	.90	.90
Ditto, 6 exposures . . . . .	.45	.55
Kodak Portrait Attachment (see p. 32) . . . . .	.75	.75
Kodak Self Timer (see p. 32) . . . . .	1.25	1.25

*The prices of cameras and film include the Excise Tax*





## No. 1 Autographic Kodak *Special*

YOU'LL marvel that a camera so small can include so many photographic refinements.

Its excellent equipment assures excellent pictures. Kodak Anastigmat lens  $f.6.3$  is fast and sharp-cutting. The watch-like Kodamatic shutter times seven useful speeds,  $1/2$  to  $1/200$  second, and its sliding exposure scale selects for you the proper exposure for

the light you find. Rising front and countersunk autographic attachment complete the list of photographic features that are combined in this exceptional camera.

### DESCRIPTIVE DETAILS

SIZE OF PICTURES:  $2\frac{1}{4}$  x  $3\frac{1}{4}$  inches. SIZE

OF KODAK:  $1\frac{5}{16}$  x  $3\frac{1}{16}$  x  $6\frac{7}{16}$  inches.

CAPACITY WITHOUT RELOADING: 6 exposures.

WEIGHT: 18 ounces.

FOCUS: Adjustable only, with screw focusing device.

LENSES: For details see price list below.

SHUTTER: Kodamatic with cable and finger release. SPEEDS: Seven, from  $\frac{1}{200}$  to  $\frac{1}{2}$  second, and time and "bulb" actions.

FINDER: Brilliant; reversible for vertical or horizontal pictures.

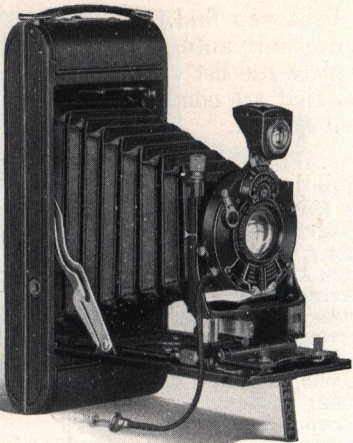
FINISH: Metal parts in nickel and black enamel. Aluminum body covered with finest quality genuine sealskin. Black bellows.

MISCELLANEOUS: Autographic feature, countersunk. Two tripod sockets. Rising front.

### PRICES

No. 1 AUTOGRAPHIC KODAK <i>Special</i> , with Kodak Anastigmat Lens <i>f.6.3</i> , $4\frac{3}{8}$ -inch focus, and Kodamatic Shutter	\$40.00
With Bausch & Lomb Tessar Series Ic Lens <i>f.4.5</i> , No. 12, $3\frac{5}{8}$ -inch focus, and Kodamatic Shutter	61.00
Long-grain Leather Case, velvet-lined, with strap	3.75
Autographic Film Cartridge, 6 exposures (No. A 120)	.25
Kodak Portrait Attachment (see p. 32)	.75
Kodak Self Timer (see p. 32)	1.25

*The prices of cameras and film include the Excise Tax*



## Nos. 1A and 2C Autographic Kodaks *Special*

**SUPERIOR** equipment gives the Nos. 1A and 2C *Specials* extra scope.

There's speed in the lens, Kodak Anastigmat *f.6.3*, to conquer difficult photographic situations. There's speed and accuracy in the Kodamatic shutter with its seven adjustments from  $\frac{1}{2}$  to  $\frac{1}{200}$  second (No. 2C,  $\frac{1}{150}$ ).

The rising front aids good composition. The sliding timing scale shows

you the stop and speed to use. And the Kodak Range Finder is an ingenious aid to correct focus.

### DESCRIPTIVE DETAILS

**SIZE OF PICTURES:** No. 1A,  $2\frac{1}{2} \times 4\frac{1}{4}$  inches; No. 2C,  $2\frac{7}{8} \times 4\frac{7}{8}$ . **SIZE OF KODAK:** No. 1A,  $1\frac{1}{2} \times 3\frac{5}{16} \times 8$  inches. No. 2C,  $1\frac{9}{16} \times 3\frac{7}{8} \times 8\frac{3}{4}$ .

**CAPACITY:** No. 1A, 12; No. 2C, 10 exposures.

**WEIGHT:** No. 1A, 25 ounces; No. 2C, 32 ounces.

**FOCUS:** Adjustable; screw focusing device.

**LENS:** Kodak Anastigmat *f*.6.3; No. 1A, 5-inch focus; No. 2C, 6-inch focus.

**SHUTTER:** Kodamatic, cable and finger release. **SPEEDS:** No. 1A, seven,  $\frac{1}{200}$  to  $\frac{1}{2}$  second; No. 2C, seven,  $\frac{1}{150}$  to  $\frac{1}{2}$  second. Time and "bulb" actions on each.

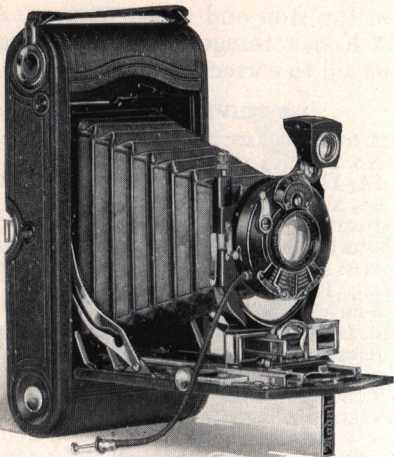
**FINDER:** Brilliant; reversible for horizontal or vertical pictures.

**MISCELLANEOUS:** Aluminum body covered with genuine sealskin. Metal parts finished in nickel and black enamel. Black bellows. Autographic feature, countersunk. Two tripod sockets. Kodak Range Finder. Rising and falling front.

### PRICES

	No. 1A	No. 2C
AUTOGRAPHIC KODAK <i>Special</i> , with Kodak Anastigmat Lens <i>f</i> .6.3 and Kodamatic Shutter . . . . .	\$55.00	\$58.00
Long-grain Leather Case, velvet-lined, with strap . . . . .	4.50	5.00
Autographic Film Cartridge, 12 exposures (No. A 116) for No. 1A; 10 exposures (No. A 130) for No. 2C . . . . .	.60	.75
Ditto, 6 exposures . . . . .	.30	.45
Kodak Portrait Attachment (see p. 32) . . . . .	.75	.75
Kodak Self Timer (see p. 32) . . . . .	1.25	1.25

*The prices of cameras and film include the Excise Tax*



## Nos. 3 and 3A Autographic Kodaks *Special*

**K**ODAK Anastigmat lens  $f.6.3$  and Kodamatic shutter give the Nos. 3 and 3A Kodaks *Special* unusual photographic efficiency. With or without the Combination Back, permitting use of Kodak Cut Film or plates and ground glass focusing, they are ready for any picture in the hand camera field.

## DESCRIPTIVE DETAILS

**SIZE OF PICTURES:** No. 3,  $3\frac{1}{4} \times 4\frac{1}{4}$  inches;  
No. 3A,  $3\frac{1}{4} \times 5\frac{1}{2}$  inches.

**CAPACITY:** No. 3, 12; No. 3A, 10 exposures.

**WEIGHT:** No. 3, 34 ounces; No. 3A,  $46\frac{1}{2}$ .

**LENSES:** For details see PRICES below.

**FOCUS:** Adjustable. **SHUTTER:** Kodamatic, with cable and finger release. **SPEEDS:** seven; No. 3,  $\frac{1}{200}$  to  $\frac{1}{2}$  second; No. 3A,  $\frac{1}{150}$  to  $\frac{1}{2}$ . Time and "bulb" actions.

**MISCELLANEOUS:** Body covered with Persian Morocco. Metal parts finished in nickel and black enamel. Autographic feature. Brilliant, reversible finder. Rising and falling front; sliding front on No. 3. Two tripod sockets. No. 3 with spirit level; No. 3A with Kodak Range Finder.

### PRICES

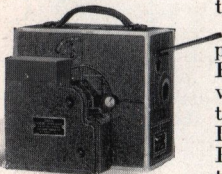
	No. 3	No. 3A
Autographic Kodak <i>Special</i> with Kodak Anastigmat Lens <i>f.6.3</i> , 5-inch focus on No. 3; $6\frac{5}{8}$ -inch focus on No. 3A; and Kodamatic Shutter	\$55.00	\$65.00
With Bausch & Lomb Kodak Anastigmat Lens <i>f.6.3</i> No. 2, $5\frac{1}{4}$ -inch focus on No. 3; No. 4, 7-inch focus on No. 3A; and Kodamatic Shutter	70.00	85.00
With Bausch & Lomb Tessar Series IIb Lens <i>f.6.3</i> No. 4, $5\frac{1}{4}$ -inch focus on No. 3; No. 5K, 7-inch focus on No. 3A; and Kodamatic Shutter	80.00	104.00
Grain Leather Case, velvet-lined . . . . .	4.75	5.25
Combination Back . . . . .	4.50	5.00
Kodak Double Plate Holders, each . . . . .	1.50	1.50
Kodak Cut Film Sheaths, each . . . . .	.10	.15
Kodak Cut Film, regular, package of 12 . . . . .	.67	.93
Kodak Cut Film, <i>Super Speed</i> . . . . .	.77	1.03
Autographic Film Cartridge, 12 exposures (No. A 118) for No. 3; 10 exposures (No. A 122) for No. 3A . . . . .	.90	.90
Ditto, 6 exposures . . . . .	.45	.55
Kodak Portrait Attachment (see p. 32) . . . . .	.75	.75
Kodak Self Timer (see p. 32) . . . . .	1.25	1.25

*The prices of cameras and film include the Excise Tax*

# CINÉ-KODAK

## Makes Motion Pictures

THE Ciné-Kodak gives you the thrill of *motion* pictures just as easily as your other Kodak gives you the pleasure of "still" snapshots. *You press the button*—and the Ciné-Kodak battery turns the crank.



*We do the rest*—the purchase price of Ciné-Kodak Film includes development and reversal at the Eastman laboratory in Rochester, Chicago, or San Francisco. The film is returned to you, postage prepaid, ready for projection

with the Kodascope in your own home.

In addition to showing motion pictures you make yourself, you may rent through Kodascope Libraries, Inc., comedies and dramas featuring your favorite stars, educationals, juveniles to entertain the children, and travel pictures.

The Kodascope is electrically driven on any house circuit, direct or alternating current, from 105 to 125 volts. With 56-watt lamp it fills brilliantly a 30 x 40-inch screen at 18 feet; with 200-watt equipment (extra) it gives a 6-foot image at 33 feet and fills the 39 x 52-inch screen at 23 feet. A safety attachment with 56-watt lamp outfit permits stopping the action for a longer look at any point. Compared to standard size, Ciné-Kodak motion pictures reduce the cost over 80 per cent.

Booklet with complete information free at your dealer's or by mail from the Eastman Kodak Company, Rochester, N. Y.

# KODASCOPE

## Projects Motion Pictures

### DESCRIPTIVE DETAILS

*Ciné-Kodak*—SIZE: 8 x 4<sup>5</sup>/<sub>8</sub> x 8<sup>5</sup>/<sub>8</sub> inches.

WEIGHT: 7<sup>1</sup>/<sub>4</sub> pounds.

CAPACITY: 100 feet (4 minutes operation).

Daylight loading, safety film. LENS: Kodak Anastigmat *f*.3.5.

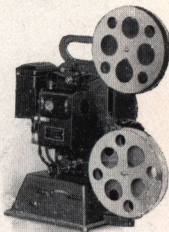
BODY: Aluminum.

FINDERS: Top and rear.

*Kodascope*—SIZE: 18<sup>1</sup>/<sub>2</sub> x 14<sup>7</sup>/<sub>8</sub> x 10<sup>3</sup>/<sub>8</sub> inches.

WEIGHT: 20 pounds.

CAPACITY: 400 feet (16 minutes projection). LENS: 50mm. focus, projecting 30 x 40-inch picture at 18 feet.



### PRICES

CINÉ-KODAK, including excise tax . . . . .	\$125.00
Kodak Motor Drive Unit, with Battery and Charging Outfit . . . . .	25.00
Kodascope and Splicer (56-watt lamp) . . . . .	160.00
Ditto with 200-watt lamp . . . . .	180.00
Tripod . . . . .	25.00
Screen No. 1 (30 x 40 inches) . . . . .	25.00
Screen No. 2 (39 x 52 inches) . . . . .	35.00
Outfit as above, with 56-watt lamp, 30 x 40-inch screen and <i>either</i> motor drive or tripod and crank . . . . .	335.00
Ciné-Kodak Film, 100-foot Rolls . . . . .	6.00
50-foot Rolls . . . . .	4.00
(Price includes finishing and return transportation)	
Duplicate Prints, 100-foot length . . . . .	6.00
50-foot length . . . . .	4.00
Leather Case for Ciné-Kodak, Film Magazines, and Tripod Head or Motor Drive Unit . . . . .	18.00
Kodascope Traveling Case . . . . .	18.00
Extra Battery for Motor Drive . . . . .	8.00
Kodascope Rewind . . . . .	5.00
Unipod Cane . . . . .	5.00





## Nos. 2 and 2A Brownies

THE Brownies represent photography in its simplest terms and at its smallest cost.

But they are built by Eastman experts to make good pictures, and they do. Every Brownie has a carefully tested lens and shutter.

The Nos. 2 and 2A Brownies are improved models with staunch aluminum bodies and good looking, long wearing, imitation leather covers.

They differ chiefly in picture size: No. 2,  $2\frac{1}{4} \times 3\frac{1}{4}$  inches, No. 2A,  $2\frac{1}{2} \times 4\frac{1}{4}$ .

## DESCRIPTIVE DETAILS

**SIZE OF PICTURES:** No. 2,  $2\frac{1}{4} \times 3\frac{1}{4}$  inches;  
No. 2A,  $2\frac{1}{2} \times 4\frac{1}{4}$  inches.

**SIZE OF CAMERA:** No. 2,  $3 \times 4 \times 5\frac{7}{16}$  inches;  
No. 2A,  $3\frac{1}{4} \times 5 \times 6$  inches.

**CAPACITY N. C. FILM:** No. 2, 6 exposures;  
No. 2A, 12 exposures.

**WEIGHT:** No. 2,  $17\frac{1}{2}$  ounces; No. 2A, 23 ounces.

**FOCUS:** Fixed only.

**LENSES:** No. 2, Single Meniscus; No. 2A, Meniscus Achromatic.

**SHUTTER:** Eastman Rotary, with three stops and time action.

**FINDERS:** Two, ground glass, for vertical and horizontal pictures.

**FINISH:** Body of aluminum, covered with imitation leather. Metal parts in nickel and black enamel.

**MISCELLANEOUS:** Two tripod sockets.

## PRICES

	No. 2	No. 2A
<b>BROWNIE CAMERA, Single Meniscus Lens on No. 2, Meniscus Achromatic Lens on No. 2A; Eastman Rotary Shutter</b>	\$2.75	\$3.75
<b>Brownie Carrying Case, with strap</b>	1.25	1.50
<b>N. C. Film Cartridge, 12 exposures (No. 116) for 2A</b>		.60
<b>Ditto, 6 exposures (No. 120) for No. 2; (No. 116) for No. 2A</b>	.25	.30
<b>Kodak Portrait Attachment (see p. 32)</b>	.50	.50
<b>Developing and Printing Outfit</b>	2.00	2.00

*The prices of cameras and film include the Excise Tax*



## Nos. 0, 3 and 2C Brownies

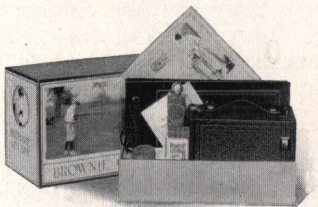
**E**VEN beginners will get good pictures with a Brownie. And they cost so little that anybody can have one.

### DESCRIPTIVE DETAILS

**SIZE OF PICTURES:** No. 0,  $1\frac{5}{8} \times 2\frac{1}{2}$  inches; No. 3,  $3\frac{1}{4} \times 4\frac{1}{4}$ ; No. 2C,  $2\frac{7}{8} \times 4\frac{7}{8}$ . **SIZE OF CAMERA:** No. 0,  $2\frac{5}{8} \times 3\frac{3}{8} \times 4\frac{1}{8}$ ; No. 3,  $4\frac{3}{8} \times 5\frac{1}{8} \times 6\frac{1}{8}$ ; No. 2C,  $3\frac{7}{8} \times 6\frac{1}{4} \times 7\frac{1}{4}$ . **CAPACITY N. C. FILM:** No. 0, 8; No. 3, 12; No. 2C, 6 exposures. **WEIGHT:** No. 0, 8; No. 3,  $22\frac{1}{2}$ ; No. 2C, 26 ounces. **FOCUS:** Fixed only. **LENSES:** No. 0, Meniscus; No. 3 and No. 2C, Meniscus Achromatic. **SHUTTER:** Eastman Rotary; No. 0 with one stop and time action, No. 3 and No. 2C with three stops and time action. **MISCELLANEOUS:** Ground Glass Finders for horizontal and vertical pictures. **FINISH:** Body covered with imitation leather. Nos. 3 and 2C have two tripod sockets.

## PRICES

	No. 0	No. 3	No. 2C
BROWNIE CAMERA, with Meniscus Lens and Eastman Rotary Shutter	\$2.00		
With Meniscus Achromatic Lens		\$4.50	\$5.00
Brownie Carrying Case, with strap	1.00	1.60	1.60
N. C. Film Cartridge: 8 exposures (No. 127) for No. 0; 12, (No. 124) for No. 3	.25	.90	
Ditto, 6 exposures: (No. 124) for No. 3; (No. 130) for No. 2C		.45	.45
Brownie Tripod Adapter for No. 0	.25		
Kodak Portrait Attachment	.50	.75	.75
Developing and Printing Outfit	2.00	2.00	2.00



## Brownie Gift Box

WITH the Brownie Gift Box any child can enjoy the fun of photography. The contents include a capable, Eastman-made camera, the No. 2 Brownie; two rolls of Kodak Film; a 50-leaf Eastman album; tube of Kodak Photo Paste; Kodak Portrait Attachment for close-ups; *At Home with the Kodak*, a booklet of tips on pictures worth making; Brownie instruction book; and a coupon good for one year's subscription to *Kodakery*—twelve issues.

Brownie Gift Box . . . . . \$5.00

*The prices of cameras and film include the Excise Tax*

# Nos. 2 and 2A Folding Autographic Brownies

A NEW Eastman shutter and a new Eastman lens are now offered on these popular models. The lens is the semi-anastigmat Kodar *f.7.9*; Kodex shutter times accurately exposures of  $\frac{1}{25}$  and  $\frac{1}{50}$ .

These Brownies fold compactly like the Kodaks and have the exclusively-Eastman, autographic feature. They are simple, dependable picture-makers.

## DESCRIPTIVE DETAILS

SIZE OF PICTURES: No. 2,  $2\frac{1}{4} \times 3\frac{1}{4}$  inches; No. 2A,  $2\frac{1}{2} \times 4\frac{1}{4}$ . SIZE OF CAMERA: No. 2,  $1\frac{1}{4} \times 3\frac{1}{8} \times 6\frac{1}{2}$  inches. No. 2A,  $1\frac{7}{16} \times 3\frac{3}{8} \times 7\frac{7}{8}$ .

CAPACITY: No. 2, 6; No. 2A, 12 exposures.

WEIGHT: No. 2,  $19\frac{1}{2}$  ounces; No. 2A, 27 ounces.

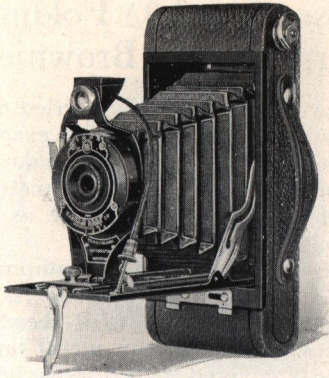
FOCUS: Adjustable, with automatic focusing lock.

LENSES: Meniscus Achromatic; Rapid Rectilinear, No. 2,  $3\frac{3}{4}$ -inch focus; No. 2A, 5-inch focus; or Kodar *f.7.9*, No. 2,  $3\frac{7}{8}$ -inch focus; No. 2A,  $4\frac{7}{8}$ -inch focus.

SHUTTER: Kodex, with cable and finger release.

SPEEDS:  $\frac{1}{25}$  and  $\frac{1}{50}$ , time and "bulb" actions.

FINDER: Ground glass, reversible.



**FINISH:** Metal body covered with imitation leather. Fittings finished in nickel and black enamel. Black bellows. Autographic feature. Two tripod sockets.

### PRICES

	No. 2	No. 2A
FOLDING AUTOGRAPHIC BROWNIE with Meniscus Achromatic Lens and Kodex Shutter . . . . .	\$ 9.00	\$10.00
With Rapid Rectilinear Lens . . . . .	11.00	12.00
With Kodar Lens <i>f</i> .7.9 . . . . .	12.00	13.00
Carrying Case for Folding Auto- graphic Brownie, with strap . . . . .	1.50	1.60
Autographic Film Cartridge, 12 expo- sures (No. A 116) for No. 2A . . . . .		.60
Ditto, 6 exposures (No. A 120) for No. 2; (No. A 116) for No. 2A . . . . .	.25	.30
Kodak Portrait Attachment (see p. 32)	.75	.75
Kodak Self Timer (see p. 32) . . . . .	1.25	1.25

*The prices of cameras and film include the Excise Tax*

# Nos. 2C and 3A Folding Autographic Brownies

**E**ASILY worked, handily carried cameras built to conform to the exacting Eastman standards. They make pictures of generous area. No. 2C pictures,  $2\frac{7}{8} \times 4\frac{7}{8}$ , are almost as large as No. 3A,  $3\frac{1}{4} \times 5\frac{1}{2}$ , postcard size.

New lens and shutter equipment, Kodar *f*.7.9 and Kodex, speeds  $\frac{1}{25}$  and  $\frac{1}{50}$ , can now be had with these old favorites. Their sturdy metal bodies are neatly covered with durable imitation leather.

## DESCRIPTIVE DETAILS

**SIZE OF PICTURES:** No. 2C,  $2\frac{7}{8} \times 4\frac{7}{8}$  inches; No. 3A,  $3\frac{1}{4} \times 5\frac{1}{2}$ . **SIZE OF CAMERA:** No. 2C,  $1\frac{3}{4} \times 3\frac{3}{4} \times 8\frac{11}{16}$  inches; No. 3A,  $1\frac{11}{16} \times 4\frac{5}{16} \times 9\frac{5}{16}$ .

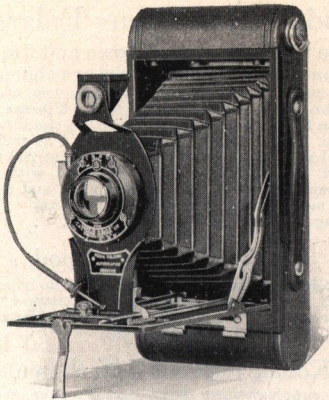
**CAPACITY:** 10 exposures.

**WEIGHT:** No. 2C, 27 ounces; No. 3A, 30 ounces.

**FOCUS:** Adjustable, with automatic focusing lock.

**LENSES:** Meniscus Achromatic; Rapid Rectilinear, No. 2C,  $5\frac{5}{8}$ -inch focus; No. 3A,  $6\frac{3}{8}$ ; or Kodar *f*.7.9, No. 2C,  $5\frac{1}{4}$ -inch focus; No. 3A,  $6\frac{1}{4}$ -inch focus.

**SHUTTER:** Adjustable speed with time and "bulb" actions; cable and finger release.



**FINDER:** Ground glass, reversible. **FINISH:** Fittings finished in nickel and black enamel. Metal body covered with imitation leather. Black bellows. Two tripod sockets. Autographic feature.

### PRICES

	No. 2C	No. 3A
<b>FOLDING AUTOGRAPHIC BROWNIE with Meniscus Achromatic Lens and adjustable speed shutter</b> . . . . .	\$13.00	\$14.50
<b>With Rapid Rectilinear Lens</b> . . . . .	15.00	17.00
<b>With Kodar Lens <i>f</i>.7.9 and Kodex Shutter</b> . . . . .	16.00	18.00
<b>Carrying Case, with strap</b> . . . . .	1.70	1.80
<b>Autographic Film Cartridge, 10 exposures, (No. A 130) for No. 2C; (No. A 122) for No. 3A</b> . . . . .	.75	.90
<b>Ditto, 6 exposures</b> . . . . .	.45	.55
<b>Kodak Portrait Attachment (see p. 32)</b> . . . . .	.75	.75
<b>Kodak Self Timer (see p. 32)</b> . . . . .	1.25	1.25

*The prices of cameras and film include the Excise Tax*



# Kodak Auto-Focus Enlarger

Slide the camera up or down and the image size changes, but the focus stays sharp.

The apparatus attaches to any table top; accommodates film or plate negatives up to 4 x 6 inches; makes prints on Bromide paper from 1½ to 3½ times the negative size. Maximum enlargement, 14 x 21 inches. A Mazda Lamp (not supplied) of from 75 to 200 watts is required for printing. Price complete with Kodak Anastigmat lens, electric cord and plug, and set of six flexible metal masks (including Excise Tax) . . . \$35.00  
 Diffusing Disc for soft focus effects . . . . . 1.00

## Optipod and Kodapod

Two pocket-compact accessories that do tripod duty. Optipod has a felt-protected clamp, Kodapod, toothed jaws for secure attachment to any convenient support. Price, \$1.25 and \$1.75 respectively.

## Kodak Portrait Attachments

Two supplementary lenses that slip over the regular camera lens and render close-up portraits in correct focus. Kodak Portrait Attachment for *sharp* focus; Kodak *Diffusion* Portrait Attachment for *soft* focus.  
 Kodak Portrait Attachment . . . . . \$ .50 and .75  
 Kodak Diffusion Portrait Attachment . . \$1.25 and 1.50  
 (According to size)

## Kodak Self Timer

Attaches to any cable release and presses the button for you at any interval from ½ second to 1 minute.  
 Kodak Self Timer . . . . . \$1.25

## Kodak Cut Film

Offers all the advantages of plates with none of their drawbacks, and adds Cut Film convenience. Two speeds, regular and *Super Speed*—extra fast. Available for plate-holding cameras including both regular and *Special* models of the Nos. 3 and 3A Kodaks when equipped with Combination Backs, Kodak Plate Holders and Kodak Cut Film Sheaths.

	Price per doz., including Excise Tax			
	2¼ x 3¼	3¼ x 4¼	3¼ x 5½	4 x 5
Regular . . . . .	\$ .46	\$ .67	\$ .93	\$ .93
<i>Super Speed</i> . . . . .	.52	.77	1.03	1.03

*At our Kodak Counter*

**Y**OU'LL always find at our Kodak counter a complete assortment of Kodaks and Brownies, ready for your selection.

A year's subscription to *Kodakery*, the photographic monthly for the amateur, is free with every Eastman camera.

**ENGLISH BROTHERS**

**MONONA, IOWA.**