

NEWMAN & GUARDIA, Ltd.



Manufacturers of
SCIENTIFIC INSTRUMENTS
 AND
High-class
Photographic Apparatus

Telegraphic Address:
 "GONIOMETER," LONDON.
 Code 5th Ed. A.B.C.

Telephone
 No. 3525 Central.

OFFICES, SHOWROOMS AND WORKS—

17 & 18, Rathbone Place, Oxford Street, LONDON, W.

CONTRACTORS TO H.M. GOVERNMENT, Etc., Etc.

TERMS.

Previous Catalogues, Price Lists, and Advertisements, differing from following quotations, are hereby cancelled.

The prices in this Catalogue are **STRICTLY NET.**

All goods must be paid for on, or before, delivery. Unless specially instructed, prepaid Foreign or Colonial orders are sent parcel post where possible, or if too heavy for post, by first steamer, and packed in tin-lined cases.

Foreign or Colonial orders not paid in advance or not paid in full cannot be sent by post, but are shipped through a Bank or Agent for delivery on payment of account, or balance of invoice.

Packing and Carriage charged extra. ***Empties not allowed for, except when specified on Invoice.***

Goods are packed with the utmost care, and we cannot hold ourselves answerable for any damage they may sustain in transit, either at home or abroad.

DEPOSIT ACCOUNTS.

For convenience of customers residing or travelling in the country or abroad, Regular Supplies of **Fresh Photographic Materials** can be sent. Deposit Accounts may be opened for this purpose, and, in order to avoid the expense of small remittances, for any desired amount.

CORRESPONDENCE.

In English, French, German, and Italian.

NEWMAN & GUARDIA, Ltd., 17 & 18, Rathbone Place,
 Oxford Street, London, W.

SCIENCE OF CAMERA DESIGN.

The New Folding Pocket SIBYL CAMERA.

TWO NEW MODELS:

THE NEW SPECIAL SIBYL $3\frac{1}{2} \times 2\frac{1}{2}$ and $6\frac{1}{2} \times 9$ c/m.
AND THE NEW IDEAL SIBYL $\frac{1}{4}$ -Plate ($4\frac{1}{4} \times 3\frac{1}{4}$.)

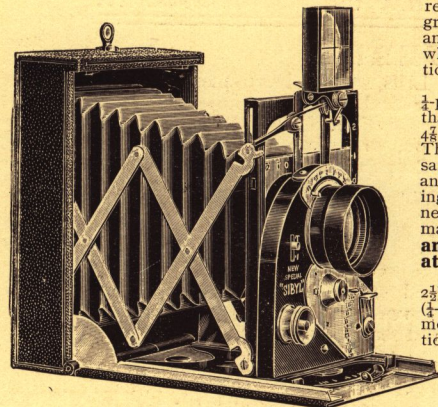
TWO ENTIRELY NEW MODELS are this year placed on the market to supplant the $3\frac{1}{2} \times 2\frac{1}{2}$ and $\frac{1}{4}$ -plate **SIBYL POCKET CAMERAS** previously manufactured. The **Small Ordinary, Small Special, $\frac{1}{4}$ -plate Ordinary, $\frac{1}{4}$ -plate Special, and $\frac{1}{4}$ -plate IMPERIAL SIBYL CAMERA** Models will be eventually withdrawn from the market. These latter Cameras will be obtainable until disposal of present Stock, at prices as per 1913 list. This withdrawal marks the end of an epoch in the manufacture of the famous Sibyl Cameras, and heralds the advent of New Models, which, by

reason of their improved design and greater facilities, are certain to meet with an even greater success than the old types, which have given such complete satisfaction since they were introduced.

THE NEW MODELS $3\frac{1}{2} \times 2\frac{1}{2}$, and $\frac{1}{4}$ -plate are slightly smaller in dimensions than their forerunners, *i.e.*, $3\frac{1}{2} \times 2\frac{1}{2} = 4\frac{1}{2} \times 3\frac{3}{8} \times 1\frac{1}{8}$, and $\frac{1}{4}$ -plate = $5\frac{1}{4} \times 4\frac{1}{2} \times 1\frac{1}{16}$. The weight of the New Models is the same as that of the old ones, *i.e.*, 16 ozs. and 23 ozs. respectively. Notwithstanding this fact, many valuable additions and new features have been introduced, making the **CAMERA the most efficient and Complete Folding Pocket Apparatus obtainable.**

THE NEW SPECIAL SIBYL ($3\frac{1}{2} \times 2\frac{1}{2}$), and THE NEW IDEAL SIBYL ($\frac{1}{4}$ -plate) are identical in the range of their movements, and the following Specification describes the one equally with the other.

Both Cameras are constructed of the finest quality materials, and are manufactured **throughout in our Factory at Rathbone Place**, and finished in the usual **unique** and well known



NEW SPECIAL and NEW IDEAL SIBYL fitted with DIRECT VISION FINDER.

"N. & G." style. Metal only is used in their construction, and they are therefore suitable for use in **every climate.**

THE "N. & G." PNEUMATIC HIGH PRECISION SHUTTER fitted to these Cameras provides a range of Instantaneous Speeds from $\frac{1}{2}$ second to $\frac{1}{1250}$ th second on the $3\frac{1}{2} \times 2\frac{1}{2}$ Model, and $\frac{1}{2}$ second to $\frac{1}{1000}$ th on the **NEW IDEAL $\frac{1}{4}$ -plate SIBYL**, all which speeds we **Guarantee** accurate. We have introduced further, a **direct time and bulb movement**, as given in the popular **BABY SIBYL MODEL**. The button release on these Shutters is the

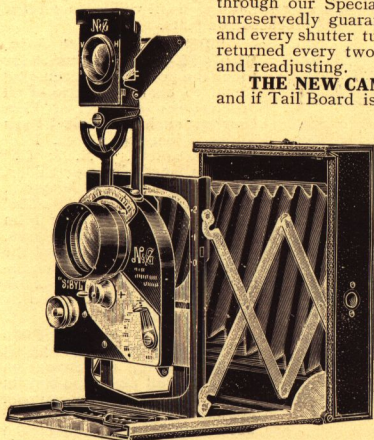
NEWMAN & GUARDIA, Ltd., 17 & 18, Rathbone Place,
Oxford Street, London, W.

The New Folding Pocket Sibyl Camera—*contd.*

most delicate and lightest release on **any** Shutter yet designed, and we know of many instances where $\frac{1}{4}$, or even $\frac{1}{2}$ -second exposures have been given with the Sibyl Camera held in the hand; showing the perfect balance and smooth working of the Shutter Blade, which on Slow speeds is practically silent. These Shutters are pneumatically controlled, of simple and reliable construction; all the working parts being made of brass and German silver, they are not affected by change of climate. Particular emphasis is laid upon the fact that all fractions given on any **"N. & G." Shutter Speed Plate** are engraved from actual readings taken through our Special Shutter Speed Testing Machine; and we unreservedly guarantee that this is done in the case of each and every shutter turned out by **"N. & G."** Cameras should be returned every two or three years to the makers, for cleaning and readjusting.

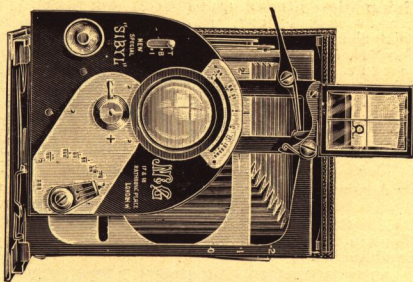
THE NEW CAMERAS open by pressing Brass Knob at top, and if Tail Board is allowed to fall at an angle, the front will glide out, and is automatically locked to Focussing Plate by pulling Camera Front forward. **The sweetness of this movement is only found in "N. & G." SIBYLS.**

Horizontal, and Vertical rising front is provided equal to a quarter of length of Plate each way **without swinging or straining the Trellis Bars.** The **horizontal** movement is a new feature, and has only been attained by the design of a new Camera Front, and new patent **"N. & G." Trellis.** We constantly declined to give a Horizontal movement on some of the old Sibyls by the method of sliding the front sideways, which would cause considerable strain on the rivets of Trellis Bars, and in the course of time defeat the purpose for which we introduced them, *i.e.* **Rigidity, and Parallelism** of Front with Plate. With the New Models, however, this difficulty has been successfully surmounted, in a scientifically correct and workmanlike manner.



NEW "SPECIAL" and "IDEAL" SIBYL CAMERA with FOLDING FINDER. Showing Vertical and Horizontal Rise, and Lens Hood.

The Patent "N. & G." Direct Lever Focussing Device is a very important adjustment, only found in this apparatus. This consists of a double lever pivoted to the Focussing Plate, the short arm of which is coupled to the Register Catch attached to the Tail Board. The Long Arm of the Lever describing a large arc enables all scales to be kept well separated and distinct, regardless of the small amount of movement of Lens required to focus on all distances. The Camera front will extend to any focus at which this Lever has been set. The extremity of this Lever is supplied with a curved plate, on which is engraved an **"N. & G." Depth of Field Index**, intended to be used in conjunction with Scale Distances on Focussing Plate. The figures engraved on Focussing Lever represent the Iris Apertures most employed, and the combined use of the two Scales (Focussing and Depth of Field) is a great assistance to all who require to obtain the best distribution of Definition, and Focus.

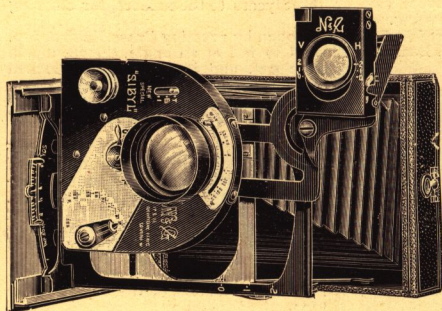


SHOWING HORIZONTAL RISE.

NEWMAN & GUARDIA, Ltd., 17 & 18, Rathbone Place, Oxford Street, London, W.

The New Folding Pocket Sibyl Camera—*contd.*

The following will serve to show the use of this fitment:—The main object being photographed is, say, 8 yards distant from the Camera, and if the centre line engraved on Focussing Lever is set on this distance on Focussing Plate, it will be seen by consulting the Depth of Field Scale, that if objects at 12 and 6 yards are required to be sharply defined, as well as main object at 8 yards, then the Lens must be stopped down to $f/8$, which is the aperture appearing on Depth of Field Scale opposite 12 and 6 yards. Similarly if the Iris is stopped down to say $f/32$, and the Focussing Lever set at 6 yards, it will be found that all objects from 3 yards to Infinity will appear sharply focussed on plate.



Showing Horizontal Rise, Folding Finder, and Collapsible Lens Hood.

THE "N. & G." $\frac{5}{16}$ in. REGISTER is an adjustment for fixing the position of Focussing Plate, to enable the use of all descriptions of Plate, or Film Carriers, such as:—Metal Dark Slides, Changing Boxes, Film Pack Adapters, "N. & G." Wooden Autochrome Slides, Mackenzie Wishart Adapters, etc. A Reliable Light "Cut Off" is fitted to all "N. & G." Film Pack Adapters, Changing Boxes, and Autochrome Slides, and the slightly deeper Register necessary to permit this extra desirable efficiency is given by this simple means.

THE "N. & G." COLLAPSIBLE METAL LENS HOOD. Owing to demand on the part of all photographers in recent years for very compact apparatus, Lens makers have been compelled to reduce he

overall dimensions of Lenses to the minimum, necessitating cutting down of Lens Hood on front cell, practically to the level of the glass surface. With present day Lenses, the use of some form of Lens Hood greatly improves the brilliancy of Negatives, and to avoid the necessity of carrying this extra accessory we have provided on these Models a permanent collapsible Metal Hood, which closes in the Camera, and does not interfere with the use of Light Filters.

The "N. & G." Patent Automatic Self Erecting and Self Closing Direct Vision View Finder, and Magnifying Sighting Pin, can be fitted, or the Camera may be had with the Patent, "N. & G." Folding Reflector Finder described below, either of which closes inside. It is important when ordering to state which Finder is required. The "N. & G." Waist Level Folding Reflector Finder showing actual Corresponding Rising Front at all positions of Camera Lens. This Finder has a fine Ground Glass Screen giving an undistorted brilliant image, and is much superior to the Brilliant type. The Ground Glass is marked to give actual Horizontal and Vertical Field of View, corresponding with that given by the Lens on plate. The Finder is scaled for the Rising movement of its Lens to correspond with Rise of Front of Camera, on which a similar scale is engraved. On closing the Finder, its Lens is automatically returned to the normal position.

The Camera has capped Bushes for use on Stand Horizontally and Vertically.

A new form Back is introduced with these new Models, in which the Plate or Film Carriers may be expeditiously inserted, and locked by means of Sliding Catch.

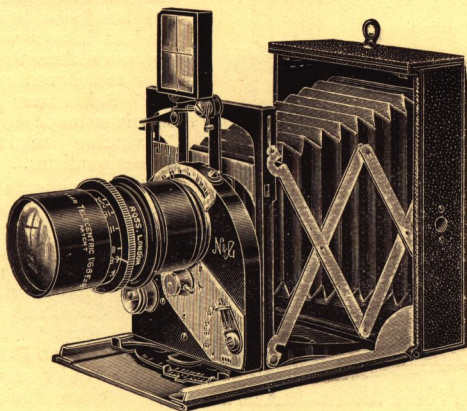
The Camera is supplied complete with Hooded Focussing Screen, and six Metal Dark Slides in Leather Wallet. Camera Cases made up specially to order, to suit customers' requirements.

NEW DOUBLE BOOK FORM DARK SLIDE, "REGISTERED DESIGN." To meet the wishes of users of our apparatus, we are now supplying a Folding Double Slide for use on Sibyl Cameras. Our own make throughout, thoroughly reliable. No more finger-marked plates or broken nails. A Slide in keeping with the Camera, and made on practical lines.

NEWMAN & GUARDIA, Ltd., 17 & 18, Rathbone Place, Oxford Street, London, W.

Important Announcement.

SIBYL CAMERAS FITTED WITH ROSS TELECENTRIC LENSES.



MESSRS. ROSS have made up specially a Model of their new **TELECENTRIC LENS,**

suitable for use on these Cameras. The fitting of this valuable Lens places a new power in the hands of Sibyl Camera users. The Telecentric is a long focus lens, working at a large aperture, and short Camera extension. It is invaluable in the photography of objects at some distance from the camera, such as distant landscapes, sporting events, etc., while for portraiture it possesses the advantage of rapidity and true perspective, as compared with lens of normal focus. This lens throws an image about twice the size given by normal lens, with half the field of view. The definition given by same is equal to that of any Anastigmat.

The New Special Sibyl can be fitted with the 9-inch F/6.8
Telecentric at an extra cost of **£5 5 0**

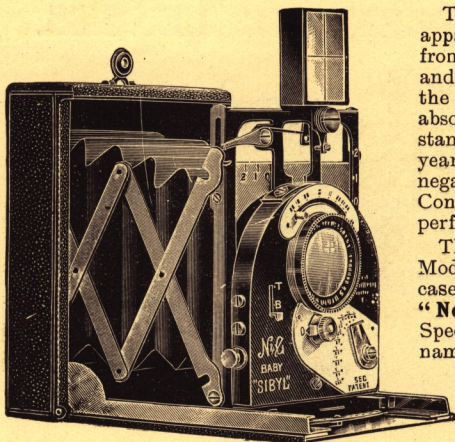
AND
The New Ideal Sibyl with the 11-inch F/6.8 Telecentric, at **£6 5 0**

**The SIBYL Cameras are the only Pocket
Cameras fitted with this exceptional Lens.**

Prices of Cameras and Sundries as described above, see pages 96 and 97.

NEWMAN & GUARDIA, Ltd., 17 & 18, Rathbone Place
Oxford Street, London, W.

THE FAMOUS "N & G" Vest Pocket "BABY" Sibyl Camera



THE BABY SIBYL CAMERA—PLATE MODEL
(Half actual size).

able supplementary accessory, fitted to sides of Case.

Weight of Camera Complete, 8 ozs. Dimensions, $3\frac{1}{2} \times 2\frac{3}{8} \times 1$ in.

Size of Plate or Film Pack, $2\frac{5}{16} \times 1\frac{3}{4}$ or $4\frac{1}{2} \times 6$ cm.

The "Baby Sibyl" is fitted with Capped Bushes for use on Stand. The SHUTTER gives a range of TESTED AND GUARANTEED SPEEDS from $\frac{1}{2}$ sec. to $\frac{1}{200}$, and Direct Ball and Time Movement.

RISING FRONT both ways, HORIZONTAL AND VERTICAL, full $\frac{1}{4}$ of length of plate, without swinging Trellis Bars, the only Camera of this size giving this movement.

The Pinnacle of British Workmanship—Unrivalled.

Price of **FOLDING REFLECTOR FINDER** complete in Pocket Case, and fitted outside of Camera, £1 7s. 6d.

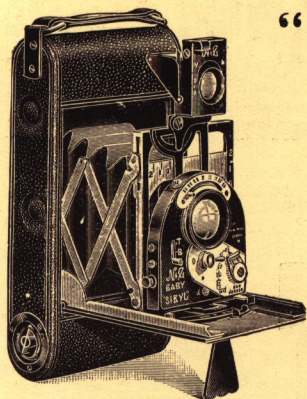
For Prices of this Model and Sundries, see pages 96 and 97.

"BABY" SIBYL (Closed)



NEWMAN & GUARDIA, Ltd., 17 & 18, Rathbone Place,
Oxford Street, London, W.

"N. & G." ROLL FILM "SIBYL" CAMERAS.



THE BABY ROLL FILM,
NEW SPECIAL ROLL FILM
and
NEW IDEAL ROLL FILM SIBYL
CAMERAS

are now obtainable, and the Specification of movements of each was described "in extenso" for the **PLATE MODELS**.

The following particulars refer to the **ROLL FILM CAMERAS**, as distinct from the latter, but in all other features they are identical.

CAMERA.	Size of Picture.	Overall dimensions, closed.	Weight.
$2\frac{5}{16} \times 1\frac{3}{4}$, or $4\frac{1}{2} \times 6$ cm.	$2\frac{5}{8} \times 1\frac{1}{8}$	$6 \times 3\frac{1}{8} \times 1\frac{1}{8}$	15 ozs.
$3\frac{1}{2} \times 2\frac{1}{2}$, or $6\frac{1}{2} \times 9$ cm.	$3\frac{11}{16} \times 2\frac{5}{16}$	$7\frac{7}{8} \times 4\frac{1}{8} \times 1\frac{3}{8}$	28 ozs.
$4\frac{1}{4} \times 3\frac{1}{4}$, or $\frac{1}{4}$ Plate.	$4\frac{1}{8} \times 3\frac{1}{8}$	$8\frac{3}{4} \times 4\frac{1}{4} \times 1\frac{1}{2}$	36 ozs.

Note extra length of Picture obtained by economising rebate between Exposures on Film Spool.

THE BACK has very deep light-traps, and is free from any projections. It automatically raises itself for removal by depressing two concealed springs in sides. The Spool Chambers are lined with Black Cloth, and the Film travels over polished rollers, between parallel guides, there being just sufficient clearance between tops of rollers and back of case for passage of film which is stretched taut, and free from buckling, by brake springs acting on metal ends of reel (no friction on film), and is wound by **FREE WHEEL NON-SLIP WINDER** to exposed Reel Chamber.

All Roll Film Models are fitted with **"N. & G." WAIST LEVEL FOLDING REFLECTOR FINDERS** (see description under Plate Models). A Direct Vision Finder can be attached to outside of case, to order, at an extra cost of **8s. 6d.**

The **ROLL FILM CAMERA** is opened by pressure on spring, concealed in side of case, and is bushed for use on Stand, and provided with neat handle for carrying.

The "Baby" Model is designed to take Kodak Vest Pocket Film Spools, which are obtainable everywhere.

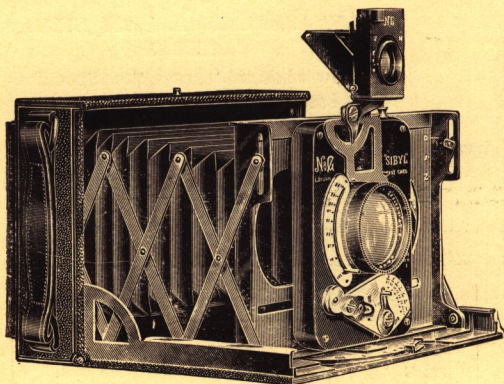
NOTE.—We do not make a combined Plate and Roll Film Camera!

For Prices see pages 96 and 97.

NEWMAN & GUARDIA, Ltd., 17 & 18, Rathbone Place, Oxford Street, London, W.

THE "N. & G." POSTCARD SIBYL CAMERA.

This Model is one of the recent additions to the **"SIBYL" SERIES.** The **"N. & G." PNEUMATIC SHUTTER** fitted



POSTCARD SIBYL.

gives a range of measured speeds from 1 sec. to $\frac{1}{100}$ th sec. and also a Bulb movement is given, and Time exposures of any duration may be obtained. The Shutter is practically silent in working, and is set by raising a rod on top, and

as this descends on pressure of release, it can always be seen when exposure is going on. This rod rests at half-way position, on the Time and Bulb movement.

RISE OF FRONT MOVEMENT for both ways of plate, to extent of $\frac{1}{4}$ of plate. Vertical Falling Front also obtainable to same extent.

"N. & G." WAIST LEVEL FOLDING REFLECTOR FINDER fitted.

The size of Camera closed is 7 ins. by $4\frac{7}{8}$ ins. by 2 ins. Weight $37\frac{1}{2}$ ozs. Size of plate $5\frac{1}{2}$ ins. by $3\frac{1}{2}$ ins.

The Camera is constructed of Metal throughout, covered in best Hard Grain Morocco Leather.

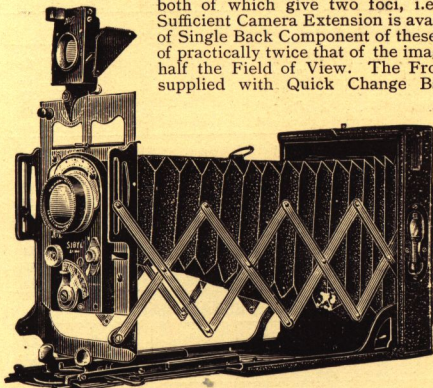
NEWMAN & GUARDIA, Ltd., 17 & 18, Rathbone Place, Oxford Street, London, W.

The Quarter-Plate "N & G" SIBYL DE LUXE CAMERA. DOUBLE EXTENSION MODEL

(Made in Quarter-Plate Size only).

The SIBYL DE LUXE Model was designed in 1909, and has remained since its introduction one of the most popular models of the Sibyl Series.

The Camera is very compact, light and strong, and may be obtained fitted with either the **ZEISS SERIES VII. No. 2'2 DOUBLE PROTAR**, or the **ROSS CONVERTIBLE LENS**, both of which give two foci, i.e., 5 in. at $f/6.3$, and 9 in. at $f/12.5$. Sufficient Camera Extension is available to allow full advantage of use of Single Back Component of these Lenses, which gives a magnification of practically twice that of the image thrown by the complete Lens, and half the Field of View. The Front cell of either of these Lenses is supplied with Quick Change Bayonet Jointed Adapter, for quick removal of same.



**MODEL Nos. 83 and 84 QUARTER-PLATE "SIBYL
DE LUXE DOUBLE EXTENSION.**

point marked "C" when using complete Lens, and further extended to extremity of Tailboard Guides to mark "S" when using Back Component of Lens, the full extension necessary for use of Single Combination is obtained by pulling out the Second Tailboard to full Double Extension by means of small Black Knob at end of same.

"N & G" Direct Lever Focussing Adjustment, with Depth of Field Index for use with 5 in. and 9 in. Lenses.

To be used as described on pages 89 and 90.

The SIBYL DE LUXE Camera is supplied with Handle for carrying.

All other movements and fittings of Camera, except as specifically relating to this Model and described above, are as per specification given previously of other Sibyl Models.

Dimensions - 6 in. × 4½ in. × 1½ in.

Weight - - - - - 26 ozs.

Price complete, with 6 Slides in Leather Wallet - - - - £24

CAMERA CASES MADE TO ORDER.

Prices of Sundries given on page 96 and 97.

**NEWMAN & GUARDIA, Ltd., 17 & 18, Rathbone Place,
Oxford Street, London, W.**

PRICE LIST OF "SIBYL" CAMERAS.

Plate Models complete with Six Single Metal Dark Slides in Leather Case.

MODEL No.	NAME OF CAMERA.	SIZE OF PLATE.	EQUIV. FOCUS.	PRICE.
-----------	-----------------	----------------	---------------	--------

FITTED WITH ZEISS F4.5 TESSAR LENS.

50	Baby Sibyl	2 $\frac{5}{8}$ " x 1 $\frac{3}{8}$ "	3"	£11 11 0
51	" " Roll Film	2 $\frac{8}{16}$ " x 1 $\frac{1}{16}$ "	3"	13 13 0
52	New Special Sibyl	3 $\frac{3}{8}$ " x 2 $\frac{5}{8}$ "	4 $\frac{1}{2}$ "	15 0 0
53	" " Roll Film	3 $\frac{1}{8}$ " x 2 $\frac{1}{8}$ "	4 $\frac{1}{2}$ "	17 0 0
54	New Ideal Sibyl	4 $\frac{1}{2}$ " x 3 $\frac{1}{2}$ "	5 $\frac{3}{8}$ "	19 0 0
55	" " Roll Film	4 $\frac{1}{8}$ " x 3 $\frac{1}{8}$ "	5 $\frac{3}{8}$ "	21 0 0
56	Postcard Sibyl	5 $\frac{1}{8}$ " x 3 $\frac{1}{8}$ "	6"	24 0 0

FITTED WITH ZEISS F6.3 TESSAR LENS.

57	New Special Sibyl	3 $\frac{1}{2}$ " x 2 $\frac{1}{2}$ "	4 $\frac{1}{2}$ "	£14 10 0
58	" " Roll Film	3 $\frac{1}{8}$ " x 2 $\frac{1}{8}$ "	4 $\frac{1}{2}$ "	16 10 0
59	New Ideal Sibyl	4 $\frac{1}{2}$ " x 3 $\frac{1}{2}$ "	5 $\frac{3}{8}$ "	18 5 0
60	" " Roll Film	4 $\frac{1}{8}$ " x 3 $\frac{1}{8}$ "	5 $\frac{3}{8}$ "	20 5 0
61	Postcard Sibyl	5 $\frac{1}{8}$ " x 3 $\frac{1}{8}$ "	6"	22 10 0

FITTED WITH ROSS-ZEISS F4.5 TESSAR LENS.

62	Baby Sibyl	2 $\frac{5}{8}$ " x 1 $\frac{3}{8}$ "	3"	£11 11 0
63	" " Roll Film	2 $\frac{8}{16}$ " x 1 $\frac{1}{16}$ "	3"	13 13 0
64	New Special Sibyl	3 $\frac{3}{8}$ " x 2 $\frac{5}{8}$ "	4 $\frac{1}{2}$ "	15 0 0
65	" " Roll Film	3 $\frac{1}{8}$ " x 2 $\frac{1}{8}$ "	4 $\frac{1}{2}$ "	17 0 0
66	New Ideal Sibyl	4 $\frac{1}{2}$ " x 3 $\frac{1}{2}$ "	5 $\frac{3}{8}$ "	19 0 0
67	" " Roll Film	4 $\frac{1}{8}$ " x 3 $\frac{1}{8}$ "	5 $\frac{3}{8}$ "	21 0 0
68	Postcard Sibyl	5 $\frac{1}{8}$ " x 3 $\frac{1}{8}$ "	6"	24 0 0

FITTED WITH ROSS-ZEISS F6.3 TESSAR LENS.

69	New Ideal Sibyl	4 $\frac{1}{2}$ " x 3 $\frac{1}{2}$ "	5 $\frac{3}{8}$ "	£19 0 0
70	" " Roll Film	4 $\frac{1}{8}$ " x 3 $\frac{1}{8}$ "	5 $\frac{3}{8}$ "	21 0 0
71	Postcard Sibyl	5 $\frac{1}{8}$ " x 3 $\frac{1}{8}$ "	6"	22 10 0

FITTED WITH "COOKE" SERIES IV. F5.6 LENS.

72	Baby Sibyl	2 $\frac{5}{8}$ " x 1 $\frac{3}{8}$ "	3"	£11 0 0
73	" " Roll Film	2 $\frac{8}{16}$ " x 1 $\frac{1}{16}$ "	3"	13 0 0

FITTED WITH "COOKE" SERIES III. F6.5 LENS.

74	New Special Sibyl	3 $\frac{1}{2}$ " x 2 $\frac{1}{2}$ "	4 $\frac{1}{2}$ "	£14 0 0
75	" " Roll Film	3 $\frac{1}{8}$ " x 2 $\frac{1}{8}$ "	4 $\frac{1}{2}$ "	16 0 0
76	New Ideal Sibyl	4 $\frac{1}{2}$ " x 3 $\frac{1}{2}$ "	5 $\frac{3}{8}$ "	18 0 0
77	" " Roll Film	4 $\frac{1}{8}$ " x 3 $\frac{1}{8}$ "	5 $\frac{3}{8}$ "	20 0 0

FITTED WITH ROSS COMPOUND HOMOCENTRIC F6.8 LENS.

78	New Special Sibyl	3 $\frac{1}{2}$ " x 2 $\frac{1}{2}$ "	4 $\frac{1}{2}$ "	£14 0 0
79	" " Roll Film	3 $\frac{1}{8}$ " x 2 $\frac{1}{8}$ "	4 $\frac{1}{2}$ "	16 0 0
80	New Ideal Sibyl	4 $\frac{1}{2}$ " x 3 $\frac{1}{2}$ "	5 $\frac{3}{8}$ "	18 0 0
81	" " Roll Film	4 $\frac{1}{8}$ " x 3 $\frac{1}{8}$ "	5 $\frac{3}{8}$ "	20 0 0
82	Postcard Sibyl	5 $\frac{1}{8}$ " x 3 $\frac{1}{8}$ "	6"	21 10 0

FITTED WITH ZEISS DOUBLE PROTAR CONVERTIBLE F6.3 LENS.

83	Sibyl de Luxe	4 $\frac{1}{2}$ " x 3 $\frac{1}{2}$ "	{ 5" = f 6.3 9" = f 12.5 }	£24 0 0
----	-----------------------	---------------------------------------	-------------------------------	---------

FITTED WITH ROSS CONVERTIBLE DOUBLET LENS F6.3.

84	Sibyl de Luxe	4 $\frac{1}{2}$ " x 3 $\frac{1}{2}$ "	{ 5" = f 6.3 9" = f 12.5 }	£24 0 0
----	-----------------------	---------------------------------------	-------------------------------	---------

PRICES OF "SIBYL" SUNDRIES.

DESCRIPTION.	4½ × 6 CM.			6½ × 9 CM. AND 3½ × 2½			½-PLATE 4¼ × 3¼			POSTCARD. 5½ × 3½		
	£	s.	d.	£	s.	d.	£	s.	d.	£	s.	d.
Six extra Slides in Case (numbered)	0	11	6	0	11	6	0	15	0	1	1	0
Extra Dark Slides, each ..	0	1	6	0	1	6	0	1	9	0	2	9
Film Pack Adapter	0	12	6	1	5	0	1	7	6	1	5	0
"N. & G." Changing Boxes (12 Plates)	—	—	—	2	15	0	3	0	0	4	4	0
Do. do. (8 Plates)	—	—	—	2	12	6	2	17	6	—	—	—
Hooded Focussing Screen ..	0	4	6	0	5	6	0	6	6	0	8	6
"N. & G." Antinous Release	0	4	0	0	7	6	0	7	6	0	7	6
"N. & G." Light Filters in Holders, in Pocket Case ..	0	10	6	0	10	6	0	10	6	0	12	6
"Sibyl" Tripod Boards ..	—	—	—	0	3	6	0	3	6	—	—	—
"N. & G." Collapsible Lens Hood	0	10	0	0	10	0	0	10	0	0	10	0
"N. & G." Leather Covered Alumin. Tripod Stand (4 ft.)	2	2	0	2	2	0	2	2	0	2	2	0
"N. & G." Leather Covered Alumin. Tripod Stand (5 ft.)	2	7	6	2	7	6	2	7	6	2	7	6
Supplementary Direct Vision Finder, fitted side of Camera	0	8	6	0	8	6	0	8	6	0	8	6
Leather Focussing Hood for Finder	0	2	6	0	2	6	0	2	6	0	2	6
"N. & G." Special Wooden Autochrome Dark Slide ..	1	2	6	1	5	0	1	7	6	1	10	0
Premo Film Pack (12 Expos.)	0	1	2	0	1	8	0	3	0	0	3	3
Lumiere Film Bloc (12 Expos.)	0	1	2	0	1	8	0	3	0	0	3	3
Goerz Film Pack (12 Expos.)	0	1	5	0	1	8	0	3	0	0	3	3
"N. & G." Fine Grain Plates, per doz.	0	0	8	0	1	0	0	1	6	0	2	6
Do. (backed), per doz.	0	0	10	0	1	3	0	1	9	0	2	10
Eastman Ortho Plates, per doz	0	0	8	0	1	0	0	1	3	0	2	0
Do. (backed), per doz	0	0	10	0	1	3	0	1	6	0	2	4
Autochrome Plates (Box 4) ..	0	1	3	0	2	6	0	3	0	0	4	6
Kodak Roll Films (6 Expos.)	—	—	—	0	0	11	0	1	6	—	—	—
Do. Do. (8 Expos.)	0	0	10	—	—	—	—	—	—	—	—	—
Do. Do. (12 Expos.)	—	—	—	0	1	9	0	3	0	—	—	—
Lumiere Plavik Roll Films (6 Expos.)	—	—	—	0	0	11	0	1	6	—	—	—
Do. Do. (12 Expos.)	—	—	—	0	1	9	0	3	0	—	—	—
Ensign Roll Films (6 Expos.)	—	—	—	0	0	11	0	1	6	—	—	—
Do. Do. Do. (8 Expos.)	0	0	10	—	—	—	—	—	—	—	—	—
Do. do. do. (12 Expos.)	—	—	—	0	1	9	0	3	0	—	—	—
Watkins Developing Tanks (12 Plates)	0	9	0	0	9	0	0	9	0	0	14	0
Standa Developing Tank (6 Plates), "Popular" Model	0	10	6	0	10	6	0	11	6	0	13	6
Premo Pack Developing Tank	0	16	0	0	16	0	0	16	0	0	16	0
Leather Case to carry Camera and Slides or Camera and Film Pack Adapter, from ..	0	10	6	0	12	6	0	12	6	0	15	0
Best Velvet Lined Pigskin or Morocco Leather Case, for Roll Film Camera	0	15	0	0	17	6	1	1	0	—	—	—

"N. & G." Special Pyro Soda Developer, per set of two Bottles Concentrated Solution, 1/6 and 2/6. Postage and Packing Inland, -/9 extra.

NEWMAN & GUARDIA, Ltd., 17 & 18, Rathbone Place, Oxford Street, London, W.

THE MOST COMPLETE MIRROR FOCUSING CAMERAS MADE

THE "N. & G." **"Reflex de Luxe"** TWO-SHUTTER and the "N. & G." STANDARD SQUARE REFLECTOR **"Reflex" Camera.**

THE "REFLEX DE LUXE" COMPRISES
THREE CAMERAS IN ONE.

TO BE USED AS—



Showing **DOUBLE EXTENSION** and **FRONT SHUTTER CONTROL.**

Standard Reflex Focal Plane Camera.

For high speed work.

Front Shutter Reflex Camera.

For slow exposures, Autochromes, Portraits, Studies, etc. Ball movement also given.

Stand or Field Camera.

Working **INDEPENDENTLY** of Mirror, and focussing on ground glass at back, for special work, badly lighted subjects, interiors, etc.

The "N. & G." Two-Shutter Reflex is the **only** Camera with Reflex facilities, and a full range of speeds from 1 second to 1/800th second, and Time movement, all which speeds can be obtained when using the Camera in conjunction with Mirror, at **ANY position of Camera front** up to **Full Double Extension**. In a few words, the action of an "N. & G." Reflex Camera is as follows:—

The image thrown by the Lens, instead of passing uninterruptedly to the plate at the back of Camera is intercepted by a Mirror inclined at an angle of 45° inside the Camera, and is reflected on to a Focussing Screen at the top of apparatus, where it is focussed. The Mirror on being raised by pressure of release shuts off image from top screen, and releases shutter—exposing plate. The Reflex Camera shows *full* size image reflected on Ground Glass, up to the moment of exposure, in the same degree of brilliancy and light as will be thrown by the Lens on to the plate on the raising of the Mirror.

NEWMAN & GUARDIA, Ltd., 17 & 18, Rathbone Place, Oxford Street, London, W.

The "N. & G." Two-Shutter "Reflex de Luxe" and the "N. & G." Standard Square Reflector "Reflex" Camera (continued).

SPECIFICATION of the "N. & G." Two-Shutter "Reflex."

"N. & G." FRONT SHUTTER, of new design. Between Lens type, speeds from 1 second to $\frac{1}{250}$ th second, Ball, Time, and Instantaneous movements. "N. & G." Patent Pneumatic Control.

FOCAL PLANE SHUTTER. "N. & G." Standard Pattern and workmanship, NO TAPES giving exposures from $\frac{1}{10}$ th second to $\frac{1}{250}$ th second.

THE PATENT "N. & G." SPLIT MIRROR is fitted to all models of "N. & G." Reflexes. By this exceedingly clever device the fitting of shorter focus lenses has been made possible, and no part of the picture is cut off, as happens when a mirror of too small size is employed.

FULL DOUBLE EXTENSION, available for use with either shutter working in conjunction with Mirror, and allowing full advantage possible for use of single combination of Doublet Lens.

INTERLOCKING SYSTEM, effectually securing one Shutter whilst other is being used.

DETACHABLE FRONT SHUTTER BOX, permitting convenient use of Telephoto or Large Aperture Lenses.

THE CAMERA IS FITTED WITH A THUMB HANDLE on left hand side, so placed that the fingers come immediately over the Shutter Release. The right hand is left free for focussing, which may be adjusted until the subject (if a moving one) is in the same size and position on Ground Glass as it is required on plate.

REVERSING FOCUSING HOOD can be fitted to order, enabling user to photograph left or right of direction in which he is facing without attracting undue attention, except $3\frac{1}{2} \times 2\frac{1}{2}$ Model.

FULL RISING FRONT, controlled by Quick Running Screw.

SPECIFICATION of "N. & G." Standard Square "Reflex."

This Model embraces the same features of construction as the Two-Shutter Type, but is fitted with Focal Plane Shutter only.

THE FOLLOWING FITTINGS ARE GIVEN:

SELF-ERECTING FOCUSING HOOD, allowing full view of image on Screen. Eye-pieces to suit any sight can be fitted, which fold neatly into hood.

FULL RISING FRONT, controlled by quick running screw.

REVERSING BACK, locking automatically into position.

TWO SEPARATE RELEASES fitted, one on left side of Camera, which allows right hand to be kept free for quick focussing; the right hand release is adapted for Ball and Tube Attachment, for Time and Instantaneous Exposures.

TWO HANDLES PROVIDED. Top one for carrying Camera, and left hand side thumb handle affords steady and comfortable balance of Camera when exposing.

On "Standard" Model the lens is mounted in a Detachable Lens Cup. This can be quickly removed as required, for substitution of Supplementary Lenses, as Telephoto, Large Aperture Lenses, etc. A Special Quick Change Adapter may be fitted to order, so that one Lens Cup may be instantly removed and replaced by another.

NEWMAN & GUARDIA, Ltd., 17 & 18, Rathbone Place,
Oxford Street, London, W.

The "N. & G." Two-Shutter "Reflex de Luxe" and the "N. & G." Standard Square Reflector "Reflex" Camera (continued).

PRICES.

All Models, either "Two-Shutter de Luxe" or "Standard" pattern, are supplied complete with 3 Double Dark Slides, Pneumatic Release and Web Carrier Sling.

(NOTE.—Owing to increased cost of labour and materials, we are reluctantly compelled to increase prices of "Reflex" Models slightly.)

	$3\frac{1}{2} \times 2\frac{1}{2}$ plate.	$\frac{1}{2}$ plate, $4\frac{1}{2} \times 3\frac{1}{2}$.	5×4 , 9×12 cm.	$\frac{1}{2}$ plate, $6\frac{1}{2} \times 4\frac{1}{2}$.
"N. & G." Two-Shutter "REFLEX DE LUXE," fitted with Zeiss Double Protar	—	£50 0 0	£55 0 0	—
"N. & G." Standard Square "REFLEX," fitted with Zeiss Double Protar, as above	£32 10 0	37 10 0	42 10 0	£52 10 0
"N. & G." "REFLEX DE LUXE," without Lens ..	—	42 10 0	47 0 0	—
"N. & G." Standard "RE- FLEX," without Lens* ..	25 15 0	28 15 0	33 6 0	41 7 0

* The following Lenses can be fitted to "N. & G." "REFLEX" Models at extra cost as shown on "Without Lens" Price:—

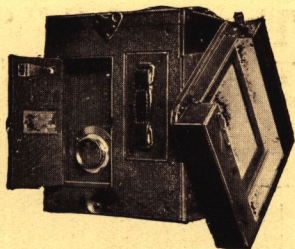
	$4\frac{3}{4}$ " Focus.	6" Focus.	7" Focus.	$8\frac{1}{2}$ " Focus.
Zeiss F/4.5 Tessar	£5 0 0	£6 10 0	£8 0 0	£10 0 0
Ross F/6.3 Convertible ..	$4\frac{3}{4}$ " Focus. £6 10 0	$5\frac{1}{2}$ " Focus. 8 10 0	$6\frac{1}{2}$ " Focus. 9 0 0	$8\frac{1}{2}$ " Focus. 10 17 6
Ross F/5.4 Telecentric ..	11" Focus. 8 5 0	13" Focus. 9 15 0	13" Focus. 9 15 0	—
Ross F/6.8 do.	11" Focus. 6 0 0	13" Focus. 7 0 0	13" Focus. 7 0 0	17" Focus. 9 0 0
Cooke Series II.a F/3.5 ..	5" Focus. 6 0 0	6" Focus. 7 0 0	—	—
Cooke .. II. F/4.5	5" Focus. 4 17 0	$5\frac{3}{4}$ " Focus. 5 5 0	$6\frac{1}{2}$ " Focus. 5 9 6	8" Focus. 7 12 6
Cooke .. III. F/6.5	5" Focus. 4 2 0	$5\frac{1}{2}$ " Focus. 4 7 0	$7\frac{1}{2}$ " Focus. 5 12 0	$8\frac{1}{2}$ " Focus. 6 3 0

Prices of Sundries for "N. & G." Square "Reflex" Cameras

	$3\frac{1}{2} \times 2\frac{1}{2}$ plate.	$\frac{1}{2}$ plate, $4\frac{1}{2} \times 3\frac{1}{2}$.	5×4 plate.	$\frac{1}{2}$ plate, $6\frac{1}{2} \times 4\frac{1}{2}$.
Strong Velvet-Lined Leather Cases, to hold Camera, Slides, and Sundries	£1 10 0	£1 15 0	£2 0 0	£2 10 0
"N. & G." Changing Boxes, for 12 Plates or Films, or 24 Cut Films	2 15 0	3 0 0	3 10 0	4 15 0
Special Film Pack Adapter, for Daylight Changing Premo Pack	1 10 0	1 15 0	2 15 0	2 15 0
Set of 6 "Sibyl" Single Metal Slides, with Adapter and Leather Case	1 7 6	1 15 0	—	—
"N. & G." "Reflex" Telephoto Attachment, including Adapter, and marking Degrees of Am- plification	5 15 0	5 15 0	5 15 0	6 12 6
Supplementary Shutter for long Automatic Exposures, Fitting same, and Leather Case ..	1 5 0	1 5 0	1 10 0	1 15 0
Set of 3 "N. & G." Double Dark Slides and Adapter	1 15 0	2 8 6	2 17 0	3 8 0

NEWMAN & GUARDIA, Ltd., 17 & 18, Rathbone Place,
Oxford Street, London, W.

All Reflex woodwork carried out in old seasoned mahogany, every board being clamped and cross-tongued. All joints screwed and guaranteed to withstand severest climatic conditions. All metal parts, wherever possible, magnalium for lightness, covered Hard Grain Black Morocco Leather.



N. & G. "REFLEX" "CLOSED and showing REVOLVING BACK."

We guarantee these Cameras to be made from start to finish in our own Factory.

First grade workmanship only, INSIDE & OUT

"N. & G." DAYLIGHT DEVELOPING AUTOCHROME BOX.

(PATENT APPLIED FOR.)

This invention is designed to meet the needs of Travellers and all who lack the most favourable facilities for the pursuit of the Colour process branch of Photography. Many would be glad to have a colour transparency record of places visited in their travels both at home and abroad, but stop short at doing so at the recollection of wasted plates exposed on previous occasions; due to inability to make test exposures, or through keeping their plates too long after exposures before development.

The Daylight Developing Box in conjunction with an ordinary Changing Bag dispels these objections, and so equipped Amateurs may develop their exposures five minutes from the time of making them, if necessary.

The Box consists of a Developing Dish, with Light Trapped outlet for Chemicals at one corner; this forms the lower half of same. It is covered by a light-tight Lid, in which is sunk a well to receive first the Developer and washing and Reversing Solutions, in the usual order.

The Plate is placed inside the Box either in a Dark Room or in Changing Bag. The Lid is then fitted to Box and clamped, when all may be taken into Daylight. The Developer is then poured in as specified by Messrs. Lumiere in their instructions for Time Development; the plate is then washed by same means, and then, when Reversing Solution has been poured on, the Lid is removed and the final operations conducted in Daylight. The box is carried out in heavily Nickel Plated Brass, and will be obtainable in sizes as follow: Prices: $\frac{1}{4}$ -plate 10/-; 5×4 , 11/6; $\frac{1}{2}$ -plate, 13/-; $\frac{1}{4}$ -plate, 17/6.

NEWMAN & GUARDIA, Ltd..

17 & 18 Rathbone Place,
Oxford Street, London, W.

The "N. & G." "TRELLIS" CAMERA.

THIS apparatus is of the Hand or Stand type, designed to give the fullest range of movements likely to be required for any description of photography. It is light, conveniently compact, and the latitude of its movements will accommodate a whole series of Lenses, from

that of the shortest focal length made (for architectural subjects) up to the lens of 16 ins. or 17 ins. focal length, on the quarter-plate model. Large Aperture Lenses are also equally readily adapted, as, for instance, $f/4.5$ Tessar, $f/4.5$ Homocentric, $f/4.5$ Cooke, and $f/3.1$ Glaukar.

Extreme rigidity and parallelism of front with plate are again assured to users of this model by means of the Trellis or Lazy-tongs supports, and this at any bellows extension. The maximum of Rising Front necessary is also obtainable, either by raising the

Front as a whole, or by using the quick and smooth movement of merely raising the Lens, which is fixed to a Sliding Friction Panel. In cases of extreme necessity, also, both movements may be requisitioned and an abnormal amount of Rise obtained. For all general

purposes, however, the ever-ready Sliding Adjustment will be found to be ample. Where a wide-angle Lens is being employed also, it will be found of immense advantage, because at this extension the folds of the bellows do not permit of the Front as a whole being raised.

These Cameras are supplied without Lens or Shutter, and any suitable form of Shutter can be fitted. A model is also made fitted with an "N. & G." Self-capping Focal Plane Shutter of new design, actuated on a geared principle, and in which no tapes are employed. The Shutter has Ball and Time movements also, and the Instantaneous speeds range from $\frac{1}{10}$ to $\frac{1}{500}$ sec. These speeds are regulated by width of slit in blind only, and not by variable tension, to which many objections are open. As this Shutter works very near the actual Focal Plane, the highest possible efficiency is obtained from it.

The form of revolving back employed is the same as that fitted to our Reflex Cameras, which a long experience has proved to be entirely satisfactory, and we can guarantee to be absolutely light-tight and of smooth action. It locks itself into the horizontal or vertical position by means of Spring Bolts.

Central Swing Front movement is given, which automatically re-centres itself into a position of parallelism with plate.

The Trellis Camera is eminently suitable for Autochrome work of any description, and fitted with our Special Autochrome slide, it has no equal for this purpose. The Camera is also made to take Single, Double, or Mackenzie Wishart Slides, "N. & G." Changing Boxes (to hold eight or twelve plates), or a Film Pack Adapter, according to the requirements of individual clients.

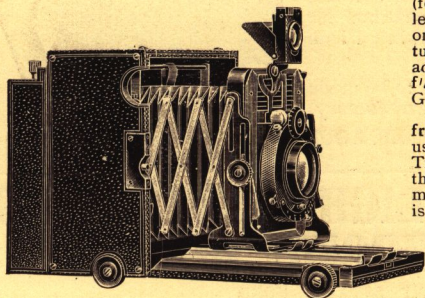


Fig. 1. "TRELLIS" FITTED FOCAL-PLATE SHUTTER.

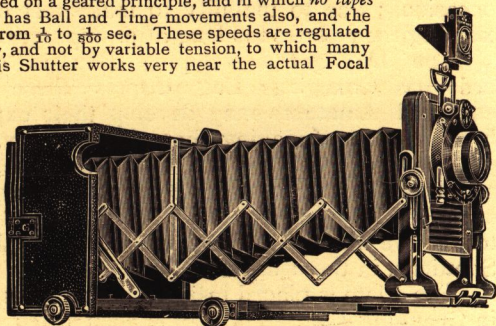


Fig. 2. SHOWING DOUBLE EXTENSION.

NEWMAN & GUARDIA, Ltd., 17 & 18, Rathbone Place, Oxford Street, London, W.

The "N. & G." "Trellis" Camera.—Continued.

The Patent "N. & G." Folding Reflector Finder is fitted, showing the actual rise of Front given on plate.

All scale markings are accurately engraved according to test distance readings taken through lens to be fitted, and may be confidently relied upon when not using focussing screen, or when the Camera is being used in the hand.

The extension available on this Camera, and the extreme rigidity of same as a whole, at all positions, thoroughly qualifies it for that interesting, and increasingly popular Branch, viz.: Telephotographic work. The newest forms of Telephoto Lenses, such as the Zeiss Magnar, Ross Telecentric, Busch Bistelar, Dallmeyer $f/4.5$, or $f/6.3$ Adon, etc., require only a reasonable amount of camera extension, and work at large apertures, thus making Telephotography possible with a Hand Camera.

The adjustable focus of a complete Telephoto System opens a wide range of possibilities with all manner of subjects to the user. The Long Equivalent focus of the new Telephoto Lens results in a picture of better perspective than that given by the ordinary Lens, which is a feature of great value in Portraiture. In many other directions, also, these Lenses are of the greatest use, giving a magnified image of distant objects in Landscape, or distant Architectural Details, etc., etc. Any Telephoto system can be fitted to the "N. & G." "Trellis" Camera.

The foregoing facts clearly demonstrate the general utility of this perfect apparatus, and we have no hesitation in confidently recommending it as THE CAMERA for the best class of work among a very wide range of subjects. At the same time, although so serviceably equipped, its movements will be found entirely simple and direct in manipulation and such as can be easily mastered by all who elect to employ it.

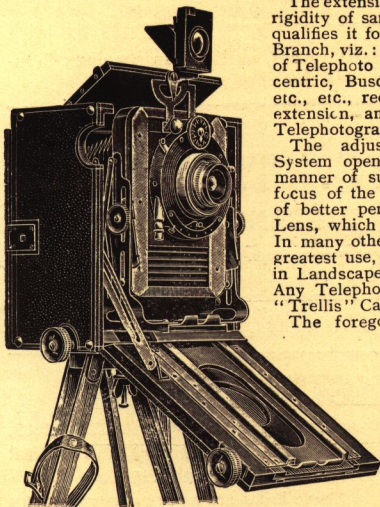


Fig. 3. SHOWING CAMERA OPENED FOR WIDE ANGLE WORK.

The Photographer will find the "Trellis" contains EVERYTHING Necessary, and NOTHING Superfluous.

Price of "N. & G." "Trellis" Camera, complete with three Double Dark Slides, but without Lens or Shutter, $\frac{1}{2}$ -plate.	£	s.	d.
Extra for Zeiss $f/6.3$ Convertible Double Protar Lens of 5 ins. and $8\frac{1}{2}$ ins. focus, mounted in Compound Shutter, and including fitting to Camera	10	10	0
Extra for Zeiss $f/4.5$ Tessar Lens of $5\frac{1}{2}$ ins. focus, mounted in Compound Shutter, and including fitting to Camera	9	10	0
Or Camera can be fitted with customer's own Lens and Shutter.	7	10	0

SUNDRIES FOR "TRELLIS" CAMERA.

Quarter-plate Double Dark Slides, 15s. each; Quarter-plate Film Pack Adapter, 30s.; Quarter-plate Changing Box, 12 plates, £3; Quarter-plate Changing Box, 8 plates, £2 15s.; Quarter-plate Mackenzie-Wishart Slides, complete with 12 Envelopes, 50s.; Quarter-plate Adapter for Single Metal Dark Slides, "Sibyl," 25s.; Extra for "N. & G." Self-capping Focal Plane Shutter, £5; Best Leather Cases for Camera Sets from £1 1s.; "N. & G." Lens Hoods from 10s.; "N. & G." Eiffel Stand, very rigid, complete with "N. & G." Screw and Waterproof Cover, No. 2A, £1 8s. 6d.; No. 2B, Heavier, £1 13s. 6d.

	£	s.	d.
New Ross Telecentric Lens $f/5.4$	8	5	0 upwards.
New Ross Telecentric Lens $f/6.8$	6	0	0 upwards.
Zeiss Magnar Telephoto Lens $f/10.$	10	0	0
Staley-Wheeler Convertible Telephoto Lens	6	6	0
Busch Bis-Telar Telephoto Lens, $f/7$	3	0	0 upwards.
Dallmeyer Adon Telephoto Lens $f/6.4$	6	6	0
New Dallmeyer Adon Telephoto Lens $f/4.5$	9	9	0

NEWMAN & GUARDIA, Ltd., 17 & 18, Rathbone Place, Oxford Street, London, W.

THE FAMOUS "N & G." UNIVERSAL SPECIAL "B"
the "N. & G." UNIVERSAL DE LUXE. BOX FORM
CAMERAS, and the once Popular NYDIA FOLDING
MAGAZINE CAMERA

Are still obtainable at the old Standard prices, as listed in previous Catalogues. Full particulars will be sent on request.

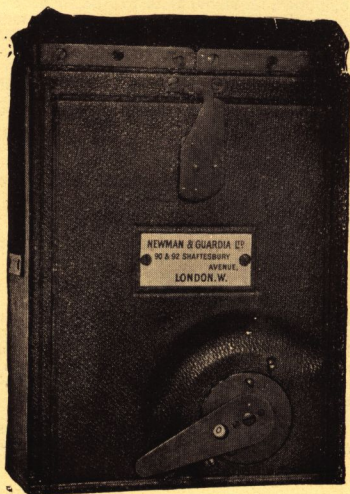


THE
"N. & G." TELEMETER
OR DISTANCE FINDER.

This instrument will be found most useful for measuring the distance of objects from Camera up to infinity.

Price 1s. 6d. complete in leather pocket case.

"N. & G." CHANGING BOXES



are made for ALL "N. & G." CAMERAS,
 and can be FITTED TO MANY OTHER
 TYPES AS WELL.

These boxes are made in several fittings and sizes, the most popular of which is illustrated here. They are made of the best seasoned mahogany covered in hard grain Morocco Leather; all joints being tongued and grooved the boxes are very strong, and suited to every climate.

Anything of a complex nature in design has been studiously avoided, with the result that the box is thoroughly dependable and satisfactory. This is undoubtedly the most convenient and expeditious method of changing at present in use. The plate is raised from the back of Box by lever, into Leather Bag at top, lifted over to front of Box, and pressed down into register ready for exposure. The Box as illustrated is the type as fitted to all "Sibyls," "Reflexes," Universal de Luxe, and "Trellis" Cameras.

PRICES.

$3\frac{1}{2} \times 2\frac{1}{2}$	$\frac{1}{2}$ plate	5×4
£2 15 0	£3 0 0	£3 10 0
$5\frac{1}{2} \times 3\frac{1}{2}$	$\frac{1}{2}$ plate	
postcard £4 4 0	£4 15 0	

NEWMAN & GUARDIA, Ltd., 17 & 18 Rathbone Place,
 Oxford Street, London W.

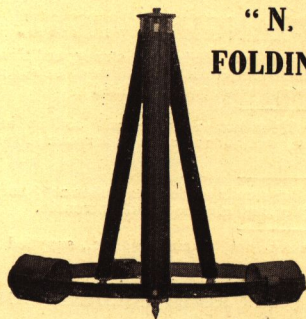
RELIABLE DRY PLATES and FRESH FILM PACKS.

All Brands of Plates can be supplied at shortest notice, Large Plate Stocks are never carried, and we are therefore in a position to guarantee ABSOLUTE FRESHNESS. ALL BRANDS AT STANDARD PRICES.

BRAND.	WYNNE SPEED.	WATKIN SPEED.	$4\frac{1}{2} \times 6$ CM. $2\frac{1}{4} \times 1\frac{1}{2}$ PER DOZ.	$3\frac{1}{2} \times 2\frac{1}{2}$ $6\frac{1}{2} \times 9$ CM. PER DOZ.	$\frac{1}{2}$ -PLATE $4\frac{1}{2} \times 3\frac{1}{2}$ PER DOZ.	5×4 PER DOZ.	$5\frac{1}{2} \times 3\frac{1}{2}$ PER DOZ.	$\frac{1}{2}$ -PLATE $6\frac{1}{2} \times 4\frac{1}{2}$ PER DOZ.
"N. & G." Special (Fine Grain) ..	F 78	180	s. d.	s. d.	s. d.	s. d.	s. d.	s. d.
"N. & G." Nydia " " ..	F 78	180	0 8	1 0	1 6	2 6	2 6	3 8
Eastman Orthochromatic ..	F 78	180	—	1 2*	—	—	—	—
Wratten Panchromatic ..	F 90	180	0 8	1 0	1 3	2 0	2 0	2 9
Wratten London Instantaneous (Special for Tropics) ..	F 56	90	1 6	1 6	2 0	3 0	3 0	4 3
Wratten Double Instantaneous (Recommended for Tropics) ..	F 100	240	0 10	1 0	1 6	2 3	2 3	3 3
Lumiere Violet Label (High Speed)	F 128	500	0 10	0 11	1 3	2 3	2 3	3 3
Ilford Monarch	F 128	350	0 10	1 0	1 6	2 6	2 6	3 8
Lumiere Autochrome Colour Plates (per Box of 4 Plates) ..	F 10	4	1 3	2 3	3 0	4 6	4 6	7 6
Extra for Backed Plates (per Box)..	—	—	0 2	0 3	0 3	0 4	0 4	0 6
Kodak Premo Film Pack ..	F 78	180	1 2	$(3\frac{1}{2} \times 2\frac{1}{2})$ 1 8	3 0	3 9	$(5\frac{1}{2} \times 3)$ 3 3	6 0
Kodak Speed Premo Film Pack ..	F III	250	—	—	3 0	3 9	—	—
Goerz Tenax Pack ..	F 78	130	1 5	1 8	3 0	3 9	3 3	—
Lumiere Film Bloc (New Model) ..	F III	300	1 2	1 8	3 0	3 9	3 3	6 0
Airtight Tins for Packing for Abroad, to hold 2 Boxes of Plates or 3 Film Packs (each) ..	—	—	0 9	1 0	1 0	1 0	1 3	1 3

* Box of 8.

"N. & G." Special Pyro Soda [Developer, per set of two Bottles Concentrated Solution, 1s. 6d. and 2s. 6d. Postage and Packing Inland, 9d. extra.



"N. & G." LEATHER COVERED FOLDING ALUMINIUM TRIPOD STAND

Very Light and Portable. No Case to Carry.
Strong and Rigid.
The Best for Hand Cameras.

PRICES.

6-Fold Triangular Section (4 feet high)	£2 2 0
6-Fold Triangular Section (5 feet high)	2 7 6

NEWMAN & GUARDIA, Ltd., 17 & 18, Rathbone Place, Oxford Street, London, W.

NEW INTENSE FLASHPOWDER

"PANCHROMA" (PATENTED).

FOR AUTOCHROME OR ORDINARY PLATES.

Faithful Rendering of Colour.

Instantaneous Exposures with Autochrome Plates.

This newly discovered Flashpowder Compound, used in conjunction with Monpillard Screen on Lens, will give an absolutely faithful rendering of every colour, from the delicate half hues and flesh tints to brilliant Greens and Reds. It gives a flash of extreme actinic intensity, allowing instantaneous ($\frac{1}{30}$ th second) exposures with Autochrome Plates. No noise, little smoke, no injurious fumes. **Makes Correct Exposure a Certainty.**

The Powder is equally good for use with ordinary plates and very economical.

WE ARE SOLE AGENTS FOR THIS POWDER IN THE UNITED KINGDOM.

PRICES PER BOX: 10 Gms., 1/-; 25 Gms., 2/3; 50 Gms., 3/6; 100 Gms., 5/9; 250 Gms., 12/9.

Full information sent on request.

FIELD GLASSES.

Zeiss or Ross Field Glasses always in stock. The finest glasses made for all uses, either in the mountains, open country, at sea, and for all descriptions of Sport or Sightseeing. These glasses are made in several models giving various magnifying powers, to suit the requirements of particular climates, and conditions of light and atmosphere. They range in price from **£5 5s.** upwards.

The best advice on selecting and fullest particulars may be had on application.

"N. & G." "CLIMAX" CHANGING TENT.

Invaluable to all Photographers, and especially travellers. It is light, strong, and three-fold in thickness. Folds into very small space. Can be fitted with any form of safe-light. No. 1 size, weight three pounds, **£1 1s.** No. 2 size, weight four pounds, **£1 5s.**

"N. & G." ECLIPSE CHANGING BAG, very light and portable, will roll up into smallest space, and enables plate changing anywhere, without resort to dark room. Price, quarter-plate, **10/6**; half-plate, **12 6.**

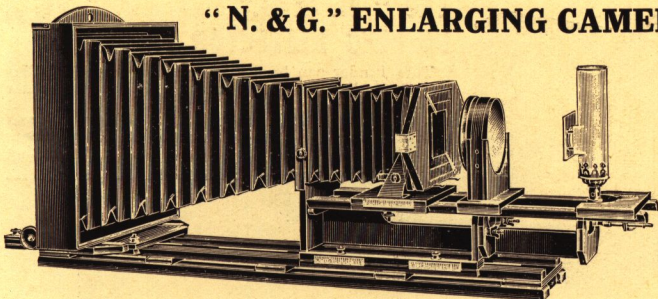
"N. & G." PHLATT MOUNTANT, supplied in large collapsible metal tubes at 1/- each Post free 1/2. No better mountant made, prints dry flat, and give no buckling trouble.

GLASS MEASURES, and all Dark Room Accessories, Chemicals, etc., supplied at Standard prices.

SPECIAL "N. & G." TOURIST'S FABRIC DARK ROOM FOLDING LAMP
2s. 6d., complete with four Wax Lights.

NEWMAN & GUARDIA, Ltd., 17 & 18, Rathbone Place,
Oxford Street, London, W.

"N. & G." ENLARGING CAMERAS.



The latest improved model takes any negative up to $\frac{1}{2}$ -plate size, and enlarges up to 15×12 . Adjusted for enlarging any small portion of a negative up to full size when required. Negative may be swung to correct diverging lines.

Lateral and Vertical adjustment for centring negative. The Dark Slide is designed to take either plates (for enlarged negatives), or Bromide Papers.

Price of Enlarger complete, as above **£13 10 0**

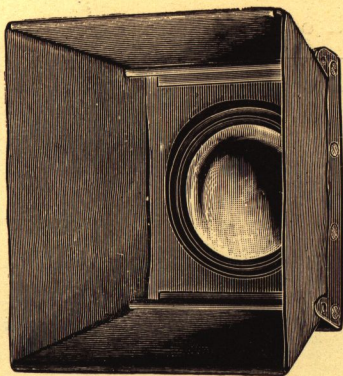
Special Adjustments allowing complete control of Negative, Light, Focussing, and arrangement of subject on Screen, to be comfortably carried out from Screen end of Camera extra **£7 10 0**

$\frac{1}{2}$ -plate Artificial Light Attachment, Condenser, etc. **£4 4 0**

$\frac{1}{2}$ -plate do. do. do. **£7 7 0**

(Can be fitted with Nernst, Incandescent, or Spirit Lamps.)

Prices of Smaller Folding Types on Application.



(REGISTERED DESIGN.)

The "N. & G." FOLDING LENS HOOD.

Should be used by every photographer.

Ensures brilliant negatives, with no signs of flare. Compact and efficient, and fitted to customers' own Lenses without extra charge. "N. & G." workmanship and material throughout. Hoods can be adapted to hold Light Filter at extra cost of $2/6$.

Prices.

Made up to diameter of any Lens up to $1\frac{1}{2}$ in. .. **10/-**

Made up to diameter of any Lens from $1\frac{1}{2}$ in. to $2\frac{1}{2}$ in. **12/6**



CLOSED.

"N. & G." PYRO SODA DEVELOPER.

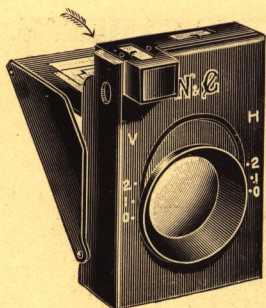
The Best for Hand Camera Exposures.

Made up to our own special Formula, produces negatives of a good colour, which have the best printing qualities. It develops the best possible from High Speed exposures Made up in two solutions it will retain its energy and keep indefinitely.

Price **1/6** (small), **2/6** (large) set of two rubber-stoppered bottles.

Packing and Inland Postage, gd. extra.

NEWMAN & GUARDIA, Ltd., 17 & 18, Rathbone Place, Oxford Street, London, W



The "N. & G." FOLDING REFLECTOR FINDER.

This Finder can be fitted to many types of Folding Cameras. By depressing the Ground Glass the Finder will fold into very compact space inside the Camera. It has a sliding Lens accurately marked horizontally and vertically to show the exact amount of Rising Front necessary, and as will be obtained on plate by raising Lens correspondingly.

Price complete in best leather pocket case :

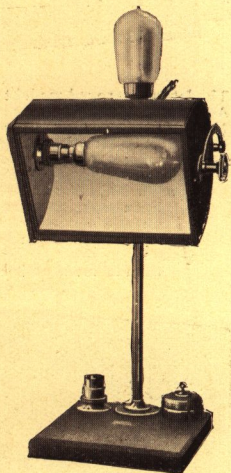
20/-

Cost of fitting to Camera extra.

The "N. & G." "SUPERB" ELECTRIC DARK ROOM LAMP.

This Lamp, being designed to take any form of Safelight, gives the maximum amount of light without fear of fogged negatives, fitted with convenient adjustments, allowing light reflection to any desired angle—or height—from work in hand. It has a bothways switch. One contact illuminates Safelight and the other an outside white light, which is extremely useful for Bromide printing. It also makes an excellent Reading Lamp when Safelight is removed.

Price complete with one Safelight	£	s.	d.
Extra Safelights, any series	1	15	0
.. ..	0	3	0
VIRIDA and Safelights for AUTOCHROMES	0	4	6



The "N. & G." METAL FOLDING TRAVELLING LAMP.

A
GREAT
BOON.
GET ONE!

NO DANGER.
NO SMELL.
NO OIL.



Burns solid paraffin wax. Is the most convenient and portable lamp obtainable for travellers.

Price complete with one packet of Paraffin tablets (50 hours) .. **10/-**

Extra box Paraffin Tablets (100 hours),
9d.

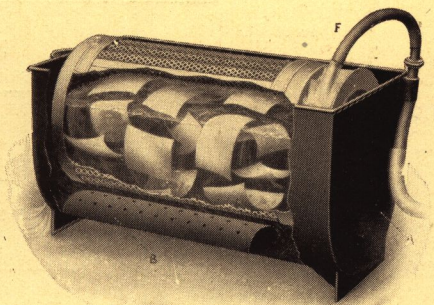
NEWMAN & GUARDIA, Ltd., 17 & 18, Rathbone Place,
Oxford Street, London, W.

New 'Turbine' Print Washer

A long felt want is at last gratified in the introduction of this thoroughly efficient Washer, for the washing of Prints and Films.

This consists of an outer Tank in which revolves a circular gauze Drum, in which the Prints or Films are placed. The water supply is directed on to a Water Wheel at one end of Drum, causing same to revolve at a regular speed. The Water, on reaching a certain level in Tank, is kept at this height by surplus water passing through outlet in bottom of Tank, and finally passing out through high level outlet at side.

Large numbers of prints may be washed thoroughly in about 30 minutes, without any fear of damage, and they will never stick together. No attention required. Tank cannot run dry owing to temporary water stoppage.



PRICES.

			£	s.	d.
Prints up to	$8\frac{1}{2} \times 6\frac{1}{2}$	1	2	6
" "	12×10	1	7	6
" "	23×17	3	10	0
" "	Any size	5	15	0

"N. and G." Special Anti-Climatic Rubber Pipe Connectors, 2 feet in length, elastic grips each end, **2/6** each.

THE "N. & G." SPECIAL WOODEN AUTOCHROME DARK SLIDE.

The best type of Dark Slide for use of Autochrome, or Paget Colour Process Plates. The back of this slide is removable, and attached to same on inside by means of springs is a Velvet-covered Plate, which is the full size of Sensitive Plate. The Autochrome Plate, being dropped into position in Slide without necessitating any unnecessary handling except by edges, is held in Register by the Spring Back, by even distribution of pressure over whole area of its surface. The Slide is made with N. & G. Safety Light Trap.

$3\frac{1}{2} \times 2\frac{1}{2}$	$\frac{1}{4}$ pl.	5×4	$5\frac{1}{2} \times 3\frac{1}{2}$	$\frac{1}{2}$ pl.
Prices—£1 2 6	£1 5 0	£1 7 6	£1 7 6	£1 10 0

NEWMAN & GUARDIA, Ltd., 17 & 18, Rathbone Place, Oxford Street, London, W.

"N. & G." Developing, Printing and Enlarging Department.

This Department is a speciality, and under the charge of an expert. Printing and Developing orders entrusted to our care will receive most careful treatment in order to obtain the best results.

Practical advice as to most suitable printing process for any negative may always be had, and also regarding mounting and framing.

Orders executed with greatest possible promptitude.

Owing to greater facilities and extension in this department, we have much pleasure in drawing attention to the following **REDUCED PRICES.**

PRICES.—Developing and Printing, <u>per Dozen.</u>						Prices <u>each.</u>				
Size.	Developing Plates and Films.	Developing Roll Films. Per spool.	P. O. P. Bromide and Gaslight Matt or Glossy.	Platinotype.	Mounted Best Sunk Mounts or Art Paper extra.	Bromide Enlargements from any size Negative.				
						Size.	Unmounted each.	Sepia Toned each.	Dry Mounting on Plate Sunk Mounts. 2nd quality 1st quality	
$4\frac{1}{2} \times 6\text{cm.}$	1/-	1/3	1/6	3/-	1/6	$6\frac{1}{2} \times 4\frac{3}{4}$	1/-	1/4	4d.	6d.
$3\frac{1}{2} \times 2\frac{1}{2}$	2/-	1/6	2/-	3/-	2/-	$8\frac{1}{2} \times 6\frac{1}{2}$	1/6	2/-	6d.	9d.
$4\frac{1}{4} \times 3\frac{1}{4}$	2/6	2/-	2/6	4/6	2/6	10 x 8	1/9	2/6	9d.	1/-
5 x 4	3/-	2/6	3/-	6/-	3/6	12 x $7\frac{1}{2}$	1/10	2/6	10d.	1/2
$5\frac{1}{2} \times 3\frac{1}{2}$	3/-	2/6	3/-	6/-	3/6	12 x 10	2/-	2/9	10d.	1/2
$6\frac{1}{2} \times 4\frac{3}{4}$	4/-	3/6	4/-	7/-	5/6	15 x 12	3/-	4/-	1/-	1/6
7 x 5	4/6	—	4/6	7/6	6/-	17 x $10\frac{1}{2}$	3/6	4/9	1/6	2/-
$8\frac{1}{2} \times 6\frac{1}{2}$	5/6	—	8/-	11/-	8/6	18 x 15	4/-	5/3	1/9	2/3

AUTOCHROMES. Developing and Binding. $3\frac{1}{2} \times 2\frac{1}{2}$ and $\frac{1}{4}$ -plate, 1/6. $\frac{1}{2}$ -plate, 2/- each.

LANTERN SLIDES. From Customers' own negatives, 1/6 each, bound.