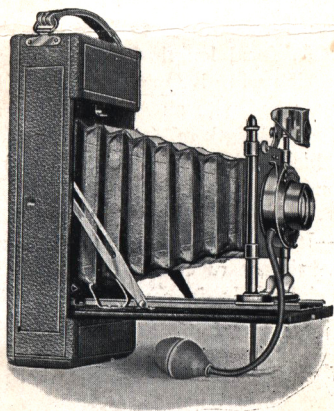


ROLL FILM
POSTAL CARD
FOLDING POCKET CAMERA



REFLEX CAMERA CO.

NEWARK, N. J.

SPORTING GOODS EXCHANGE

P. O. BOX 371

FALL RIVER, MASS.

ROLL FILM POSTAL CARD CAMERA

$3\frac{1}{4} \times 5\frac{1}{2}$

This model is a folding pocket camera for instantaneous and time exposures.

It is fitted with high grade Spec. Symmetrical Lens, speed F:8., focal length $6\frac{1}{2}$ inches and automatic shutter, which will give exposures from $1/25$ to $1/100$ of a second, and time exposures of any duration by pressing bulb or lever.

It is also listed with a rapid Symmetrical Lens, speed F:6.3., focal length $6\frac{1}{2}$ inches, and Autex Shutter, which will give exposures from 1 to $1/100$ of a second; and with an Anastigmat Lens, speed F:6.3., focal length $6\frac{1}{2}$ inches and Optimo Shutter which will give exposures from 1 to $1/300$ of a second.

New noiseless winding key and film spool holders.—It has a rising and falling front, focusing scale, brilliant reversible view finder and two tripod sockets. It is covered with black seal grain leather, metal parts are nickel plated and oxidized.

Size of camera is $9\frac{1}{4} \times 4\frac{1}{2} \times 2\frac{1}{8}$ inches, weight 35 oz.

PRICES.

ROLL FILM POSTAL CARD CAMERA.

With Special Sym. Lens, F:8., and Automatic Shutter	\$20 00
With Rapid Sym. Lens, F:6.3., and Autex Shutter	30 00
With Anastigmat Lens, F:6.3., and Optimo Shutter	60 00

INSTRUCTIONS.

To open camera.—Press the concealed button on top which releases the front door.

To set the focus.—Grip the two levers on the sliding front and draw same out until pointer indicates on the focusing scale the distance required to take the object you wish to photograph.

To insert roll film.—Slide nickel button on top of camera to the left, releasing rear door, take out the bottom spool-holder and place the film in same by pressing down until it snaps into position; replace the holder and film in the camera, break the seal and insert the black paper in the long slit of upper spool, give the winding key one turn, close the door and turn the winding key until the figure 1 appears in the red window of door.

To remove roll film.—After all exposures have been made continue winding until the black paper has passed the red window; open the door and use the sticker furnished with each spool to fasten the end of paper. Draw out the winding key, turn slightly, thus locking the key and then remove the holder.

Take out the film and transfer empty spool in lower holder to upper holder, and see that slot in the end of spool is in an upright position facing the winding key.

The camera is now ready for a new film.

In all cases where Lenses are to be fitted to this camera, the Lens must be sent to us to insure perfect fitting to the shutter.

Bed Support.—Remove Acorn on Standard and place it in socket on front end of bed.

ROLL FILM
POSTAL CARD
FOLDING POCKET CAMERA



REFLEX CAMERA CO.

NEWARK, N. J.