

The
"Midg."

TURN POINTER TO CLASS OF SUBJECT

PORTRAITS
ALL
NEAR
SUBJECTS

STREET
SCENES
OPEN
LANDSCAPE

DISTANT
LANDSCAPE
BEACH
SHIPS
SNOW

CLOUDS
OPEN SEA

F 7.7

"ALDIS 'UNO' ANASTIGMAT

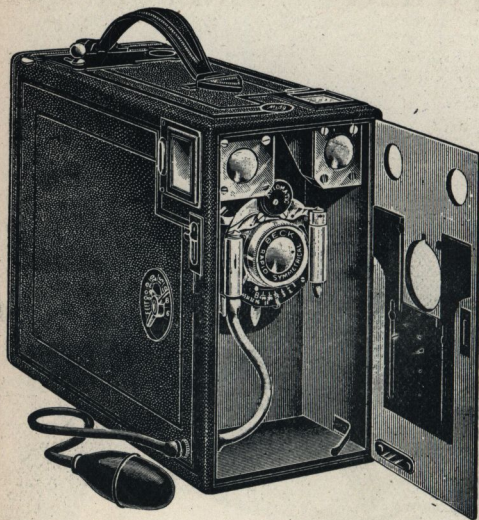
F 7.7

Focus your attention
on the following
15 pages from
"Camera House"

NUMBER
INDICATED
32 16
150
90
BY
LIGHT
24012

MIDG

THE WORLD FAMOUS MAGAZINE CAMERAS.



Midg Cameras are so well known wherever photography is practised that it is hardly necessary to enlarge upon their merits. No matter what price you pay for a Midg you know that you have got the utmost value for your money. The "Midg" is the recognised best.

No.	Size.	Focussing.	Shutter.	Lens.	Price.
0	$\frac{1}{2}$ -plate	Magnifiers	Everset 1 to $\frac{1}{100}$ sec.	R.R.	£ 1 1 0
0	P.C.	Magnifiers	Everset 1 to $\frac{1}{100}$ sec.	R.R.	1 15 0
00	$\frac{1}{2}$ -plate	Magnifiers	Everset 1 to $\frac{1}{100}$ sec.	Beck R.R.	1 5 0
1a	$\frac{1}{2}$ -plate	Rack focussing	Everset 1 to $\frac{1}{100}$ sec.	Beck R.R.	1 11 6
1	$\frac{1}{2}$ -plate	Lever focussing	Simple Automatic	Beck Symm.	2 2 0
1	P.C.	Lever focussing	Simple Automatic	Beck Symm.	2 10 0
3	$\frac{1}{2}$ -plate	Rack focussing	Primus Automatic	Beck Symm.	3 0 0
3	P.C.	Rack focussing	Primus Automatic	Beck Symm.	3 10 0
4	$\frac{1}{2}$ -plate	De Luxe Finish	Primus Automatic	Beck Symm.	3 10 0
<p>The Acto-Midg is the camera that thinks. It is fitted with a light meter and shutter working in conjunction giving correct exposure.</p>					
	$\frac{1}{2}$ -plate	With single achromatic lens	2 2 0
	$\frac{1}{2}$ -plate	With Aldis "Uno" Anastigmat f/7.7 in focussing mount	3 3 0

A Booklet by F. J. Mortimer, F.R.P.S., "Photography with a Midg," free.

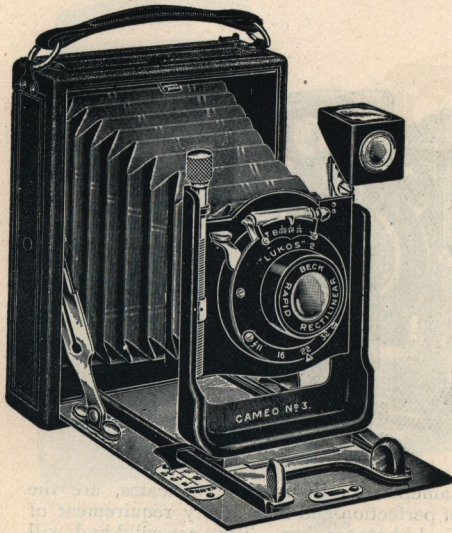
W. BUTCHER & SONS LTD
CAMERA HOUSE, FARRINGDON AVENUE, LONDON, E.C.

CAMEO

DAINTY

EFFICIENT

INEXPENSIVE



A series of inexpensive Cameras that can be folded up and carried in the jacket pocket. They have all those fittings and movements necessary for every class of photography. The lenses give sharp and clear cut pictures and the shutters are of the most reliable type. The fronts are of the most rigid description, and have rising, falling and cross movements.

No.	Size.	Specification.	Price.
0.	$\frac{1}{2}$ -pl.	Single Achromatic, Everset Shutter, one slide	£1 1 0
1.	$\frac{1}{2}$ -pl.	Rapid Rectilinear, Everset Shutter, one slide	1 5 0
1a.	$\frac{1}{2}$ -pl.	Beck R.R. Shutter with speeds $\frac{1}{25}$, $\frac{1}{50}$ and $\frac{1}{100}$ sec., two slides	1 10 0
2.	$\frac{1}{2}$ -pl.	Single Achromatic, Cast U Front, two slides	1 10 0
3.	$\frac{1}{2}$ -pl.	Beck R.R. Shutter, giving $\frac{1}{25}$, $\frac{1}{50}$ and $\frac{1}{100}$ sec., Cast U front	1 17 6
3.	Post Card.	Beck R.R. Everset Shutter $\frac{1}{25}$, $\frac{1}{50}$ and $\frac{1}{100}$ sec.	2 10 0
4.	$\frac{1}{2}$ -pl.	Beck R.R. Everset Shutter, rack focussing	2 2 0
Uno.	$\frac{1}{2}$ -pl.	Aldis Uno Anastigmat $f/7.7$, Everset Shutter, $\frac{1}{25}$, $\frac{1}{50}$ and $\frac{1}{100}$ sec.	2 15 0

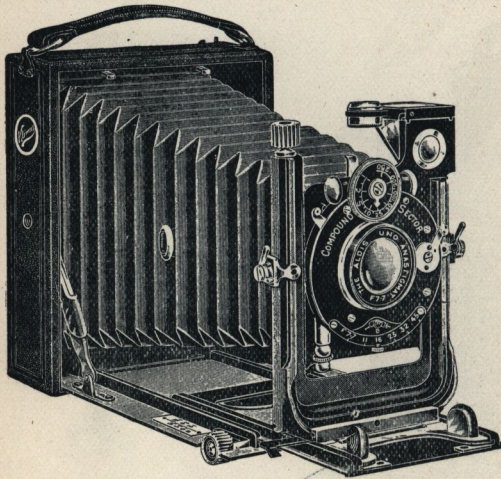
Booklet written by F. J. Mortimer, F.R.P.S., "Photography with a Cameo," free.

W. BUTCHER & SONS LTD

CAMERA HOUSE, FARRINGDON AVENUE, LONDON, E.C.

KLIMAX

THE PREMIER POCKET PLATE CAMERAS.



These Cameras, as their name indicates, are the Klimax of perfection and meet every requirement of the practical photographer. They are solid and will stand any amount of hard wear; the front being cast in solid metal is absolutely rigid and has rising, falling and cross movements; swing back is also provided. The Aldis Uno Anastigmat covers sharply at full aperture, $f/7.7$, and the Lukos Sector Shutter gives a perfect range of speeds up to $\frac{1}{100}$ of sec. Antinous release is supplied.

	Extension.	$\frac{1}{4}$ -plate.	5×4	Postcard.	$\frac{1}{2}$ -plate.							
Model I. Single.	£	s.	d.	£	s.	d.	£	s.	d.	£	s.	d.
Model II. Double.	3	15	0	4	15	0	4	15	0	5	15	0
Extras.												
Single Metal Slides		1	6	2	0	2	0	2	0	2	6	
Film Pack Adapter		5	0	15	6	8	6					
Comp. Sector Shutter	1	0	0	1	0	0	1	0	0	1	2	6

Klimax Cameras are supplied with all the standard makers' lenses.

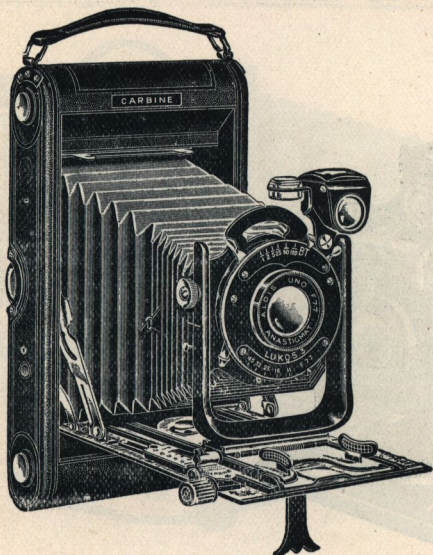
Booklet by F. J. Mortimer, F.R.P.S., "Photography with a Klimax Camera," free.

W·BUTCHER & SONS LTD

CAMERA HOUSE, FARRINGTON AVENUE, LONDON, E.C.

CARBINE

THE WORLD'S BEST ROLL FILM CAMERAS.



Every Carbine, no matter at what price, is a perfect instrument, perfect in design, equipment and workmanship, offering value which cannot be equalled. Attention is drawn to the Carbines fitted with Aldis "Uno" Anastigmat lenses. They sell at prices, which, when the quality of the lens fitted is considered, are the wonder of the photographic public. Carbines can also be used as plate cameras.

No.	Specification.	$\frac{1}{4}$ -pl.	5x4.	Postcard.
1.	Beck R.R. Everset Shutter ..	1 17 6	.. — —
3a.	Beck Symmet. Lens	2 15 0	.. 3 15 0 ..	3 10 0
	Adjustable Shutter, cast U Front			
3b.	Aldis "Uno" Anastigmat f7.7..	3 7 6	.. 4 12 6 ..	4 7 6
4a.	Aldis "Uno" Anastigmat f7.7..	3 17 6	.. — ..	4 17 6
	B. & L. Automat Rack Focussing			
5.	Aldis "Uno," Double Extension	4 12 6	.. — ..	5 15 0

Carbine Cameras are also supplied with all the standard makers' lenses.

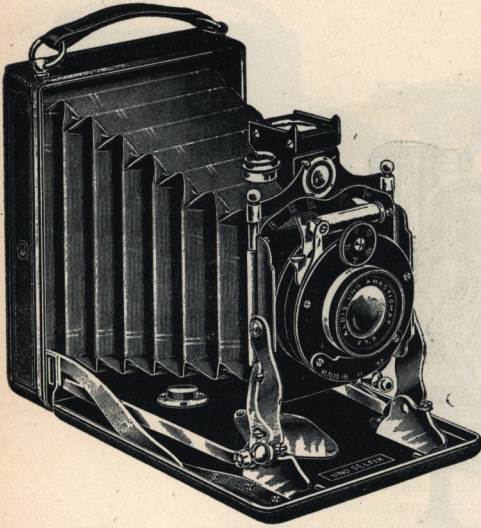
Booklet, "Photography with a Carbine," by F. J. Mortimer, F.R.P.S.

W. BUTCHER & SONS LTD

CAMERA HOUSE, FARRINGDON AVENUE, LONDON, E.C.

SELFIX

THE EVER READY POCKET CAMERAS.



These instruments combine all the advantages of the fixed focus box form camera with the small bulk and portability of the folding pocket type. On opening a "Selfix" the front swings out and locks itself firmly in position ready focussed for infinity—a feature which appeals to every camera user. Provision is made for focussing on near objects.



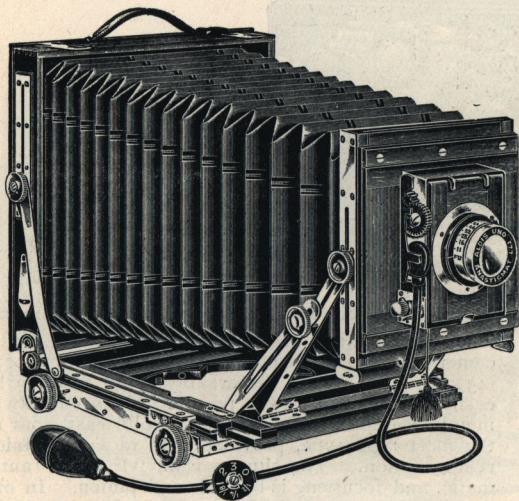
No. 2.	Specification.	Price.		
		£	s.	d.
Uno	$\frac{1}{4}$ -pl. Aldis "Uno" Anastigmat, $f/7.7$ and Simple Auto	3	15	0
Cameo	$\frac{1}{4}$ -pl. Aldis "Uno" Anastigmat, $f/7.7$ and Lukos Sector	6	6	0
P.C.	"	7	7	0
"Carbine"	Beck Symmetrical, for roll films	5	5	0
<p>The Miniature "Selfix" Camera. A dainty little camera for the waistcoat pocket, taking pictures on plates $2\frac{5}{16} \times 1\frac{3}{4}$.</p>				
No. 1.	With Achromatic Lens, fixed focus.. .. .	1	15	0
No. 2.	.. Rapid Aplanat Lens and focussing motion.. .. .	2	15	0

W. BUTCHER & SONS LTD

CAMERA HOUSE, FARRINGDON AVENUE, LONDON, E.C.

NATIONAL

A NEW STANDARD OF CAMERA VALUE.



This series of field Cameras is made throughout in the best possible manner and offers value which cannot be surpassed. The prices quoted below are for sets comprising roller blind camera with every movement, double dark slide, shutter, tripod, and Aldis "Uno" Anastigmat lens, $f/7.7$.

No.	Specification.	$\frac{1}{4}$ -plate.	$\frac{1}{2}$ -plate.	$\frac{3}{4}$ -plate.
		£ s. d.	£ s. d.	£ s. d.
4a.	Double Extension	2 10 0	3 10 0	—
4.	Triple Extension	*3 2 6	4 0 0	6 17 6
5.	Triple, Brass Bound	—	5 0 0	8 2 6
8.	Teak Tropical	—	5 0 0	8 7 6
9.	Teak Brass Bound	—	6 0 0	9 12 6

These prices include Camera, slide, tripod, shutter, and Aldis "Uno" Anastigmat $f/7.7$.

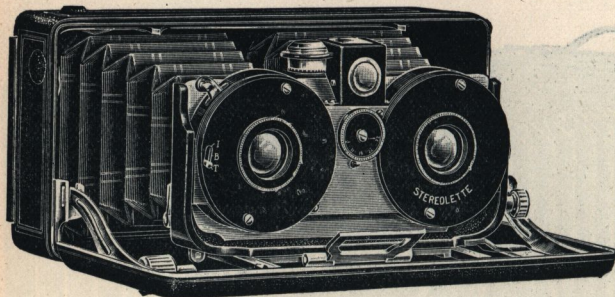
**The $\frac{1}{4}$ -pl. No. 4 is double extending only.*

W. BUTCHER & SONS LTD

CAMERA HOUSE. FARRINGTON AVENUE, LONDON, E.C.

STEREOLETTE

A MINIATURE STEREOSCOPIC POCKET CAMERA.



Stereolette. The new size, $4\frac{1}{4} \times 1\frac{3}{4}$ (45 × 107 m/m).

The Stereolette "Cameo" is an exquisite little camera taking stereoscopic pictures on plates $4\frac{1}{4} \times 1\frac{3}{4}$ (45 × 107 m/m). It is remarkably small and can be easily carried in a jacket pocket. Made entirely of metal covered in leather, it has a solid cast front of the most rigid type, provided with rack and pinion rising motion. The shutter is an "Everset" automatic, and focussing is by rack and pinion. In our booklet, "Stereoscopic Pictures and How to Make Them," a list of sundries suitable for use with all cameras taking 45 × 107 m/m plates will be found. It comprises developing and printing apparatus as well as viewing stereoscopes. Everyone interested in stereoscopic photography should write for this book.

The "Stereolette" Cameo, as illustrated.

	£	s.	d.
With pair of Aplanat Lenses, f/6	3	10	0
With pair of Aldis "Uno" Anastigmats, f/7.7	3	15	0
With pair of "Primar" Anastigmats, f/6.8	8	0	0
The "Beta" Stereolette. A box form Camera with single achromatic lenses and 6 slides. The front is removable and the body forms a stereoscope	2	2	0
Extras.			
Single Metal Slides		2	0
Film Pack Adapter		10	6

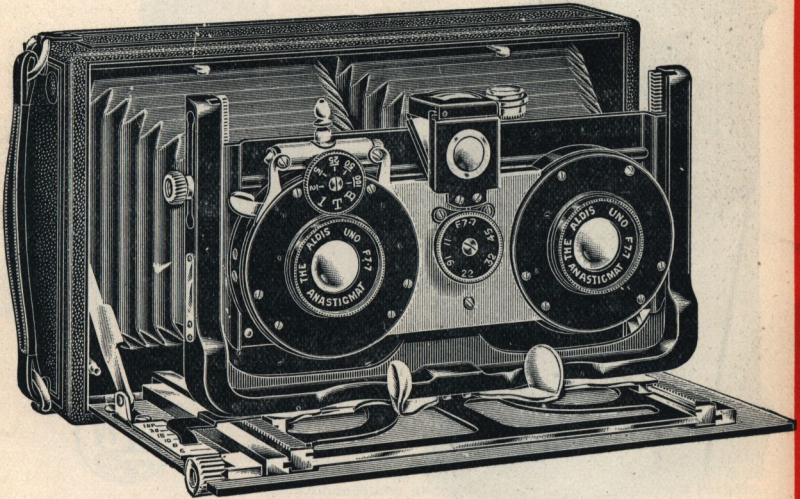
Booklet, "Stereoscopic Pictures and How to Make Them," free.

W. BUTCHER & SONS LTD

CAMERA HOUSE, FARRINGDON AVENUE, LONDON, E.C.

CAMEO

POCKET CAMERAS FOR STEREOSCOPIC
PICTURES.



A series of exceedingly small and well finished Cameras, taking pictures on the standard size stereoscopic plate. The model illustrated is the No. 2 Cameo. It is a perfect Pocket Camera embodying strength and rigidity with lightness; the front is a solid casting, and is mounted on a rack railway to ensure parallelism. It has rack rising motion; focussing is by rack and pinion. The Nos. 0 and 1 Cameo are equally efficient, but lack the many refinements of detail of the No. 2.

No.	Specification.	Price.
		£ s. d.
0.	Single Achromatic Lenses, Everset Shutter, Wood Baseboard ...	2 15 0
1.	Aldis "Uno" Anastigmat $f/7.7$, Everset Shutter, Antinous Release ...	4 4 0
2.	Aldis Anastigmats, Automat Shutter, Rack and Pinion Focussing... ..	7 7 0
Extras:		
	Dark Slides, numbered	0 2 6
	Solid Leather Case to hold Camera and 12 Slides	0 12 6
<i>The No. 2 Cameo is supplied with all the standard makes of lenses.</i>		

Booklet, "Stereoscopic Pictures and How to Use Them," free on application.

W. BUTCHER & SONS LTD

CAMERA HOUSE, FARRINGDON AVENUE, LONDON, E.C.

KLIMAX

THE PERFECT DEVELOPING TANK.



Beautifully made in nickel plated brass. Many novel features are introduced into the manufacture of the Klimax tanks. The important feature is the way the solutions are introduced, preventing air bubbles, etc. The plate rack is permanently fixed to the lid and has a locking device to hold the plates in position. Klimax tanks are reversible.

Prices.—To hold six plates.

Stereolette, $4\frac{1}{4} \times 1\frac{3}{4}$	7/6	Post-Card, $5\frac{1}{2} \times 3\frac{1}{2}$	10/6
$3\frac{1}{2} \times 2\frac{1}{2}$	7/6	5×4	10/6
Quarter-plate	7/6	Half-plate	12/6
12×9 c/m.	8/6	Stereoscopic, $6\frac{3}{4} \times 3\frac{1}{4}$	12/6

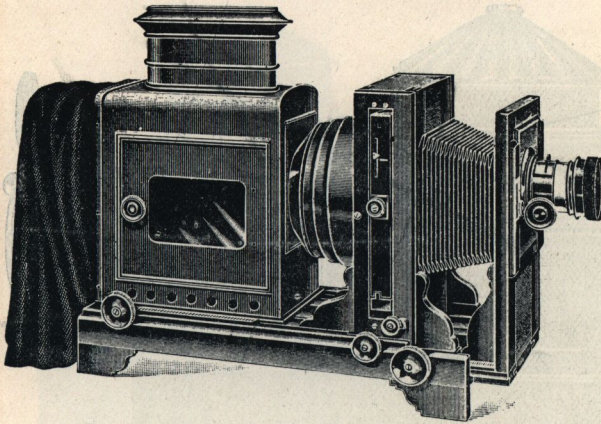
A Booklet fully describing the Klimax Tank free.

W·BUTCHER & SONS' LTD

CAMERA HOUSE, FARRINGTON AVENUE, LONDON, E.C.

RECORD

THE PRACTICAL ENLARGING LANTERN.



The Record is designed by experts and is recognised as the *one* enlarger which fulfills every possible requirement. Its great feature is the separate rack and pinion systems provided to every movement and the way in which the negative carrier can be made to swing, rise and tilt. Made of polished walnut with an extra large body, perfectly light tight trapped, it is at once a handsome and most workmanlike piece of apparatus.

No.	Size of Condenser.	Without Objective.			With Objective.		
		£	s.	d.	£	s.	d.
7/1 ...	5½ in. (143 m/m) for ½-plate ...	4	15	0	5	15	0
7/0 ...	6½ " (165 " " 5×4 ...	5	15	0	7	0	0
7/2 ...	6½ " (165 " " Post Card ...	5	15	0	7	0	0
7/2a ...	6½ " (165 " " 9×12c/m ...	5	15	0	7	0	0
7/3 ...	8½ " (216 " " ½-plate ...	7	15	0	9	10	0
7/3a ...	9 " (228 " " ½×18c/m ...	8	10	0	10	5	0
7/4 ...	11 " (280 " " 1/1-plate ...	13	5	0	18	0	0

The *Abbeydale* is similar to the above, but is made of polished oak and has the swinging motion to carrier only. The lantern body is adjustable by rack and pinion.

6/1 ...	5½ in. (143 m/m) for ½-plate ...	3	5	0	4	0	0
6/0 ...	6½ " (165 " " 5×4 ...	4	0	0	5	0	0
6/2 ...	6½ " (165 " " Post Card ...	4	0	0	5	0	0
6/2a ...	6½ " (165 " " 9×12c/m ...	4	0	0	5	0	0
6/3 ...	8½ " (216 " " ½-plate ...	5	15	0	7	0	0
6/3a ...	9 " (228 " " ½×8c/m ...	6	15	0	8	0	0

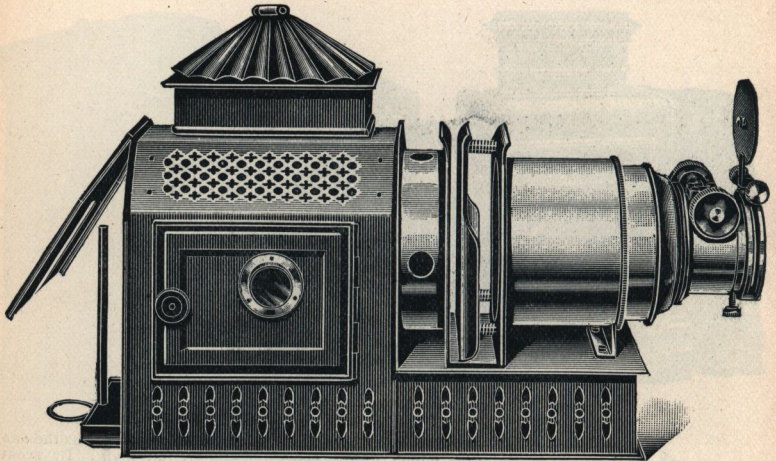
Booklet "How can I enlarge?" free.

W. BUTCHER & SONS LTD

CAMERA HOUSE, FARRINGDON AVENUE, LONDON, E.C.

COMET

OPTICAL PROJECTION LANTERNS.



A series of very compact Russian Iron Lanterns perfectly ventilated and with panelled door and sight-hole, solid brass front and brass support to ensure rigidity. Each Lantern is supplied in case, that supplied with the triple extension model being made of wood with tray to hold fittings, etc.

Prices. Single extension, 4-in. plano convex condenser and 2-in. diam. lens		£	s.	d.
No. 9e	With cowl and tray	2	2	0
„ 9	With 3-wick lamp	2	4	6
„ 9sl	With No. o "Meta" spirit lamp	2	10	6
Single extension, $4\frac{1}{2}$ -in. condenser and 2-in. diameter lens.				
„ 40	Fitted No. 3 cowl and tray	2	17	6
„ 40a	„ No. 1 3-wick lamp	3	0	0
„ 40sl	„ No. o "Meta" spirit lamp	3	6	0
Similar to the above, but with $4\frac{1}{2}$ -in. Meniscus condenser triple draw-tubes.				
No. 51a	With cowl, tray and Multi-focal lens	5	18	0
„ 51	„ „ „ „ 2-in. interchangeable lens and jacket	4	4	0

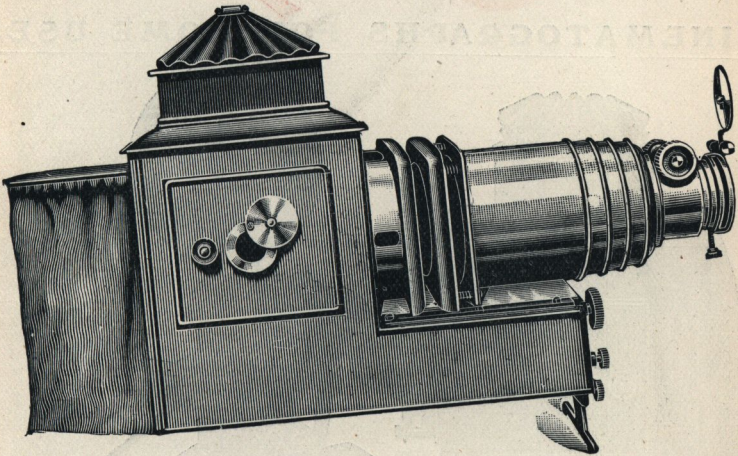
Booklet, "Optical Lanterns and how to use them." free.

W. BUTCHER & SONS LTD

CAMERA HOUSE, FARRINGTON AVENUE, LONDON, E.C.

IRON DUKE

PROJECTION LANTERNS DE LUXE.



A series of first quality Russian Iron body lanterns, embracing models suitable for the touring lanternist or with bodies large enough to accommodate the large theatre arc lamps. The bodies have side door with sight hole and fibre handle. Back curtain prevents any emission of light. The front is of very heavy brass and is fitted with quick thread screw for altering the width of stage. Each lantern is complete in case.

No. 14 series with regulation size bodies, single draw-tube.			£	s.	d.
No. 14b	With cowl and tray only	...	4	0	0
" 14	Stocks' patent lamp	...	4	17	0
" 14a	No. 1 "Primus" injector jet	...	5	5	0
No. 15 has heavy triple-draw telescopic front to take lenses up to 14-in. focus, and meniscus condenser in place of plano-convex.			£	s.	d.
" 15b	With cowl and tray only	...	5	0	0
" 15	Stocks' pattern lamp	...	5	17	0
" 15a	No. 1 "Primus" injector jet	...	6	5	0
No. 16 series, large bodies for electric light.			£	s.	d.
" 16	Complete with 2 $\frac{3}{8}$ -in. lenses	...	6	10	0
" 16a	with 3-draw telescopic front, 4 $\frac{1}{2}$ -in. meniscus condenser, fitted with 2 $\frac{3}{8}$ -in. lenses	...	7	19	0

Booklet "Optical Lanterns and how to use them" free.

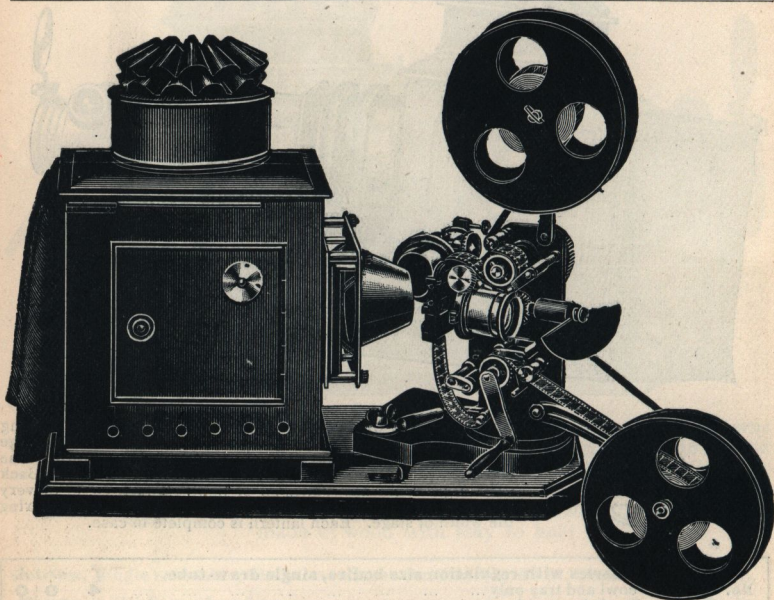
W. BUTCHER & SONS LTD

CAMERA HOUSE, FARRINGDON AVENUE, LONDON, E.C.

Empire

NEW TRADE MARK

CINEMATOGRAPHS FOR HOME USE.



An excellent little cinematograph projecting a first-rate, steady, clear picture. It is a reproduction of the regular standard machine taking the standard size film. It has both feed and take-up sprockets, rewinding gear, and lever film centering device. This machine is most suitable for giving exhibitions in a drawing room, bazaar or anywhere where a moderate size picture only is required.

Prices.

No. 00, with two lenses for projecting films and lantern slides	£5 15 0
No. 000, for projecting films only... ..	4 15 0
Mechanism only, without cinematograph or lantern lenses	2 10 0
Mechanism only, with cinematograph lens, lantern lens and attachment ...	3 15 0

Complete book of instructions sent with each machine.

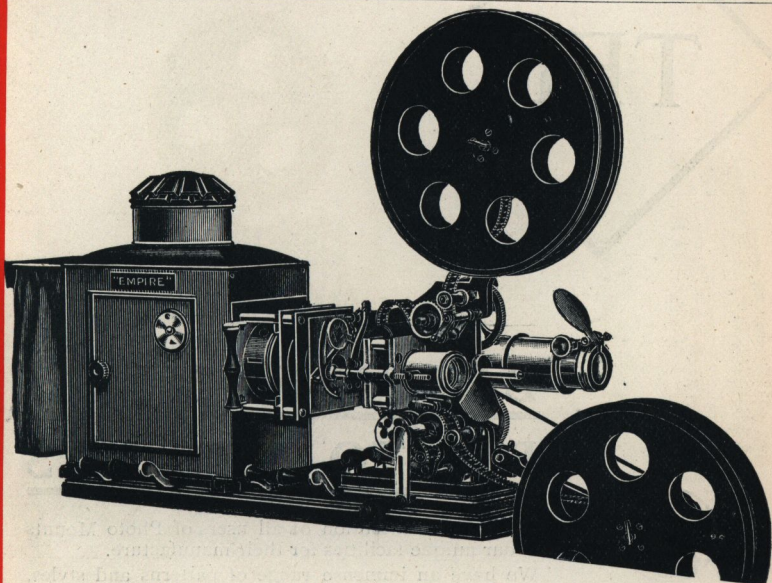
W·BUTCHER & SONS L^{TD}

CAMERA HOUSE, FARRINGDON AVENUE, LONDON, E.C.

Empire

TRADE MARK

CINEMATOGRAPHS FOR THEATRE WORK.



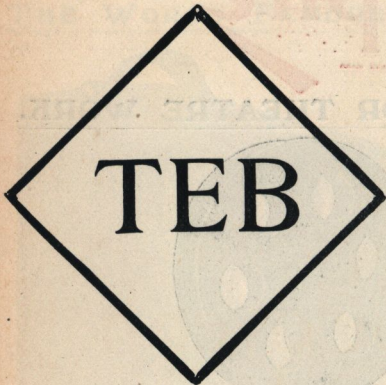
Empire Projectors are now used by most of the leading variety houses and the best showmen, not only in Great Britain but in all parts of the world. They are acknowledged to be the steadiest machines on the market as well as the best wear resisters. They have many notable features, chief amongst which is the new improved cut-off controlled entirely by the film. The patented film centering adjustment. Outside condenser instantly removable for repairing leakages.

	Specification.	Price.
Model 1.	A light, strong machine for travelling showman	£25 0 0
Model 2.	As illustrated, the regular theatre projector, dog movement ..	35 0 0
Model 12.	Maltese cross movement a very steady machine, suitable for continuous shows	38 10 0

Write for Empire List of Cinematographs and Accessories, free.

W. BUTCHER & SONS LTD

CAMERA HOUSE, FARRINGDON AVENUE, LONDON, E.C.



TEB

BRITISH MADE

PHOTO MOUNTS



We draw the attention of all users of Photo Mounts to our unique facilities for their manufacture.

We have an immense range of patterns and styles, all our own exclusive design, suitable for every trade requirement. We can always deliver from stock.

Professional photographers are invited to write for samples and prices and compare them with other makes.

W. BUTCHER & SONS LTD

CAMERA HOUSE, FARRINGDON AVENUE, LONDON, E.C.