

LANCASTER'S 1911 CAMERA CATALOGUE

will be ready for distribution on March 1st, 1911.

If you wish to be conversant with the latest and best in all types of cameras and enlarging apparatus it is essential that you write now for a copy to be forwarded to you as soon as ready.

In the following fifteen pages you will find a small selection of the various apparatus we offer. The above Catalogue will give fuller particulars and a far greater range of models. Write for a copy now. Post free.

J. LANCASTER & SON, Ltd.

ESTABLISHED 1835,

BROAD STREET, BIRMINGHAM.

Telegrams } "LANKSTER, BIRMINGHAM."
& Cables } A.B.C. Code, 5th Edition.

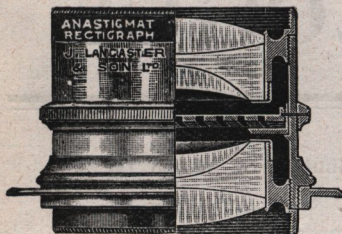
National }
Telephone } "MIDLAND, 216."

Lancaster Anastigmat Lenses.**THE "ANASTIGMAT RECTIGRAPH."**

Series III. Aperture f/6. Angle 70°-90°. Series V. Aperture f/4.5.

PERFECT ANASTIGMATS, GIVING EXCEPTIONALLY FLAT FIELD
AND FAULTLESS DEFINITION.

THE FINEST LENSES FOR ARCHITECTURAL WORK, INSTANT-
ANEOUS PHOTOGRAPHY, PORTRAITURE, &c., AT REMARKABLY
LOW PRICES.



The Series III. and Series V.
"Anastigmat Rectigraph"
consist of two Combinations
with three cemented Lenses
in each, of the finest Jena
Glass. The front or back
combinations can be used
alone.

PRICES :—SERIES III.

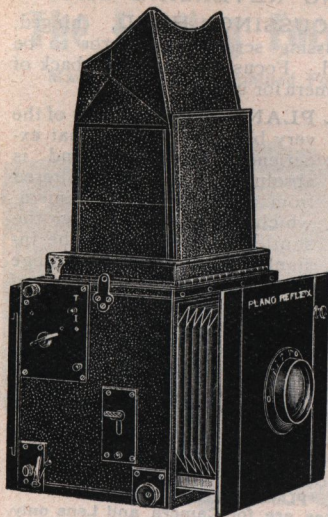
No.	Focus of complete Lens.	Focus of Front and Back Combinations alone	Plate covered at Full Aperture.	Price in Ordinary Mount.	Price in Sunk Mount.	Price in Focussing Mount.	Price in "Ibso" or "Automat" Shutter.
	inches	inches		£ s. d.	£ s. d.	£ s. d.	£ s. d.
00	3½	7	3½ × 2½	2 5 0	2 10 0	2 15 0	3 6 0
0	4½	9½	4½ × 3½	2 10 0	2 15 0	3 0 0	3 11 0
1	5½	10½	5 × 4	2 17 6	3 2 6	3 7 6	3 18 6
2	6	12	6½ × 4½	3 0 0	3 5 0	3 10 0	4 1 0
3	7	14	7 × 5	3 12 6	3 17 6	4 2 6	—
4	8½	16½	8½ × 6½	4 15 0	5 0 0	5 5 0	—
5	9½	19	9 × 7	5 10 0	—	—	—

PRICES :—SERIES V.

No.	F. No.	Equivalent focal length. inches	Plate covered sharply at full aperture.	Ordinary Iris mount. £	Focussing mount. £	Sunk mount. £
0	F. 4.5	4½	3½ × 4½	5 0 0	5 15 0	5 5 0
1a	" 4.8	5½	4 × 5½	5 10 0	6 5 0	5 15 0
1	" 4.8	6	4 × 6	6 5 0	7 0 0	6 10 0
2a	" 4.8	6½	4½ × 6½	7 0 0	7 15 0	7 5 0
2	" 4.8	7	5 × 7	7 10 0	8 5 0	7 15 0
3	" 4.8	8½	6½ × 8½	9 0 0	10 0 0	9 10 0
4	" 5	9½	7 × 9½	12 10 0	13 10 0	13 0 0

J. LANCASTER & SON, LTD., BIRMINGHAM.

The 1911 No. 6 "Plano-Reflex" Camera



Rotating Reversing Back, for Horizontal and Vertical Pictures in all sizes.

Square Focussing Finder with Patent Automatic Mask.

Patent Transparent Mercury Level fitted to Focussing Screen.

SPECIFICATION:—

LONG TRIPLE EXTENSION.—

We give below the maximum and minimum extensions of the various sizes. The working parts of the tailboard are brass-bound, ensuring smooth and exact working. Real leather bellows of finest quality. Large focussing nut on left hand side. Focussing clamp nut on right hand side.

Lenses for use with any of these Cameras must have a focal length from the back of flange of not less than the minimum extension of camera.

Size.	Dimensions.	Maximum Extension.	Minimum Extension.	Weight.*
$\frac{1}{2}$ -pl.	6 × 6 $\frac{1}{2}$ × 6 $\frac{1}{2}$ ins.	12 $\frac{1}{2}$ ins.	6 $\frac{1}{2}$ ins.	4 $\frac{1}{2}$ lbs.
5 × 4	6 × 6 $\frac{1}{2}$ × 7 "	14 $\frac{1}{2}$ "	7 "	4 $\frac{3}{4}$ "
5 $\frac{1}{2}$ × 3 $\frac{1}{2}$	8 × 8 $\frac{1}{2}$ × 8 $\frac{1}{2}$ "	17 $\frac{1}{2}$ "	8 $\frac{1}{2}$ "	6 $\frac{1}{4}$ "
$\frac{3}{4}$ -pl.	8 $\frac{1}{2}$ × 8 $\frac{1}{2}$ × 8 $\frac{3}{4}$ "	17 $\frac{1}{2}$ "	8 $\frac{1}{2}$ "	7 $\frac{1}{4}$ "
7 × 5	8 $\frac{1}{2}$ × 9 × 9 $\frac{1}{2}$ "	17 $\frac{3}{4}$ "	8 $\frac{1}{2}$ "	8 $\frac{1}{2}$ "

IMPROVED FRONT of new construction, absolutely rigid at the fullest extension so that the axial pencil of light always strikes the plate at exactly right angles.

THE MIRROR is silvered on the surface and highly polished, giving a brilliant image on the Finder in exact focal register with the plate. The one release raises the Mirror, releases the Shutter, and resets the Mirror in position again. No capping of the Shutter is therefore necessary, the plate being uncovered during the exposure only.

THE SQUARE FINDER is provided with a Mask, which is automatically changed from the vertical to the horizontal, or vice versa, by the one movement of rotating the reversing back.

PATENT TRANSPARENT MERCURY LEVEL fitted to ground glass focussing screen finder. Level is visible when viewing the image on the ground glass, and being transparent it in no way interferes with the image. The globule being of specially prepared mercury, the action of the level is perfectly silent. This level is of inestimable value in enabling camera to be held quite level while focussing and exposing, which it is most difficult to do without such a help. This one small detail alone places the No. 6 "Plano-Reflex" far ahead of all other reflex cameras on the market for practical and accurate work.

J. LANCASTER & SON, LTD., BIRMINGHAM.

The 1911 No. 6 "Plano-Reflex" Camera.

ROTATING REVERSING BACK.

DEEP FOCUSING HOOD, hinged, enabling focussing screen and mirror to be easily cleaned. Focussing screen at back of camera for use on tripod.



The FOCAL PLANE SHUTTER is of the very best construction that experience can devise, and is absolutely reliable. Altered from the outside of camera, which can be effected after the shutter has been set. The instantaneous exposures range from $\frac{1}{2}$ a second up to $\frac{1}{1300}$ th of a second. Speed scale with full range of speeds is fitted. Time exposures of any length with independent release, to which pneumatic or antinous release can be fitted. Each Camera is most carefully tested and adjusted, to ensure only instru-

ments of perfect precision being sent out.

PRICES OF THE 1911 No. 6 'PLANO-REFLEX' CAMERA.

The Prices with the various Lenses are for Camera and Lens only. The Cost must be added of the "Eureka" Slide, Plate-holders, or whichever system of Plate or Film Carrying is preferred.

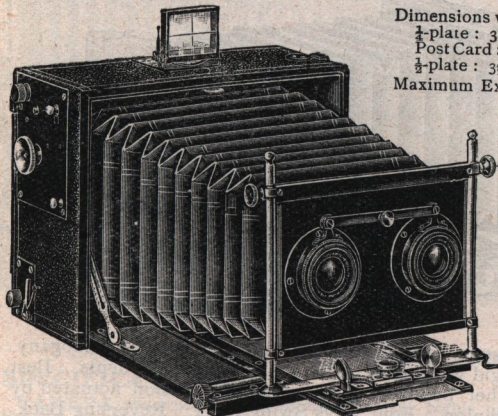
Description.	$\frac{1}{2}$ -plate.		5×4 in or 9×12cm.		5½×3½ in.		$\frac{1}{2}$ -plate, 7×5 in. or 17×13 cm.	
	£	s. d.	£	s. d.	£	s. d.	£	s. d.
Camera only, without Plate-holders or Lens	9	0 0	11	5 0	12	5 0	13	10 0
Camera only (no Plate-holders) with the following Lenses:—								
With "Euryscope Rectigraph" Anastigmat <i>f</i> /6	11	0 0	13	15 0	15	5 0	16	10 0
With "Anastigmat Rectigraph" <i>f</i> /6	12	5 0	14	10 0	17	5 0	18	10 0
" " " <i>f</i> /5.3	14	10 0	16	15 0	20	5 0	21	10 0
" " " " <i>f</i> /6	12	11 6	15	17 6	—	—	—	—
" " " " <i>f</i> /4.5	14	9 6	17	17 6	18	17 6	20	2 6
" " " " <i>f</i> /6.8	15	5 0	18	10 0	21	0 0	22	5 0
" " " " <i>f</i> /1.8	15	10 0	18	15 0	21	10 0	22	15 0
Extra Cost for Swing Front	0	15 0	0	15 0	0	15 0	0	15 0
"Eureka" Daylight Loading Slide	0	16 0	0	16 0	0	16 0	1	0 0
Envelopes for Plates or Films for ditto, per doz.	0	5 0	0	6 0	0	6 0	0	7 0
Three Aluminium-bound Block Form Double Plate-holders, with draw-out Vulcanite Shutters.	1	5 6	1	8 6	1	10 0	1	10 0
Hardwood Adapter for Film Pack	0	12 0	0	15 0	0	15 0	0	18 0
Best Quality Solid Leather Case to carry Camera and Three Double Plate-holders, with Lock and Key, Handle and Shoulder Strap	0	17 6	1	0 0	1	5 0	1	7 6

J. LANCASTER & SON, LTD., BIRMINGHAM.

Lancaster Focal Plane Cameras.

The Folding Focal Plane Camera.

Made in $\frac{1}{2}$ -plate, Combined Post Card and Stereo, and $\frac{1}{4}$ -plate.



Dimensions when closed:—
 $\frac{1}{2}$ -plate: 3in. x 5 $\frac{1}{2}$ in. x 6in.
 Post Card: 3in. x 5 $\frac{1}{2}$ x 7in.
 $\frac{3}{4}$ -plate: 3 $\frac{1}{2}$ in. x 7in. x 8 $\frac{1}{2}$ in.
 Maximum Extension—

$\frac{1}{2}$ -plate, 12in.
 Post Card, 12in.
 $\frac{3}{4}$ -plate, 16in.

Finest mahogany-built Camera, covered with best hard leather, Front Stage, with high rising, falling and cross movements, Rackwork double extension, with automatic locking device, Leather Truncated Bellows, all fittings nickel-plated, Focal Plane Shutter of very latest construction,

giving instantaneous speeds from $\frac{1}{2}$ to $\frac{1}{1300}$ th of a second (Speed Scale, with full range of speeds), and Time Exposures of any duration, Direct Vision or Brilliant View Finder, Leather Focussing Hood to ground glass, protecting same when not in use, Leather carrying Handle, Focussing Scale, &c.

WITH THREE SINGLE PLATE HOLDERS.

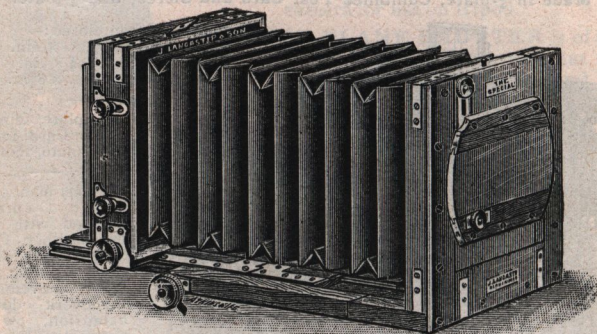
	Post Card with one lens only. 5 $\frac{1}{2}$ in. x 3 $\frac{1}{2}$ in.	Stereo with 2 lenses for Stereo Photos only	$\frac{1}{4}$ -plate.	$\frac{1}{2}$ -plate. †
	£ s. d.	£ s. d.	£ s. d.	£ s. d.
Without Lens	5 10 0	6 13 0	4 10 0	5 15 0
With Lancaster's "Rectiplat" Lens f/7.3	6 17 6	8 0 0	5 17 6	7 10 0
" " "Euryscope Rectigraph" f/6 Lens	8 0 0	10 0 0	6 10 0	8 15 0
" " "Anastigmat Rectigraph" f/6 Lens	9 0 0	12 0 0	7 10 0	10 0 0
" " "Anastigmat Rectigraph" f/5.3 Lens	10 15 0	13 0 0	9 0 0	11 15 0
" " "Aldis Anastigmat" Series II. f/6 Lens	7 12 6	8 16 0	6 3 0	9 12 6
Extra cost for "Eur ka" Daylight Loading Slide in place of Plate Holders ..	0 12 6	0 12 6	0 12 6	0 12 6
Envelopes for Plates or flat films, per doz.	0 6 0	0 6 0	0 5 0	0 7 0
Removable Stereo Division extra..	0 3 0	—	—	—
Metal Film Pack Adapter	0 6 0	0 6 0	0 4 0	—
Extra for Unicum Shutter on front ..	1 5 0	—	1 5 0	2 10 0

Quotations for Camera fitted with other Lenses per return on request.

J. LANCASTER & SON, LTD., BIRMINGHAM.

The 1911 "Special" Camera

Models I. & II.



CAMERA is constructed of finest long-seasoned Spanish mahogany. Front absolutely rigid with rising, falling and cross movements. Best quality square leather bellows. Long double extension actuated by double racks and pinion. Four ways Swing Back. Reversing Back. The Base-board folds over the focussing screen, thus protecting it from any danger of breakage.

Model I. is of the best construction throughout, but is not brass-bound.

Model II. is of the finest construction and fully brass-bound (camera and slide) at every possible point.

	$\frac{1}{4}$ -plate	5×4 in. 9 x 12 cm.	$\frac{1}{2}$ -plate 7 x 5 in.	$\frac{1}{1}$ -plate 13 x 18 cm.	10 x 8 in. 18 x 24 cm.	12 x 10 in. 24 x 30 cm.	15 x 12 in.	18 x 16 in. 36 x 40 cm
Model I.								
Camera and one Double Plate Holder only	50/-	65/-	75/-	95/-	115/-	140/-	160/-	240/-
Extra Double Plate Holders	6/-	8/-	8/6	14/6	22/6	27/6	35/-	50/-
Model II.								
Brass-bound Camera and Double Plate Holder only . .	60/-	75/-	84/-	105/-	130/-	160/-	200/-	300/-
Extra Double Plate Holders (Brass-bound)	8/6	10/6	15/-	21/-	30/-	40/-	50/-	65/-

J. LANCASTER & SON, LTD., BIRMINGHAM.

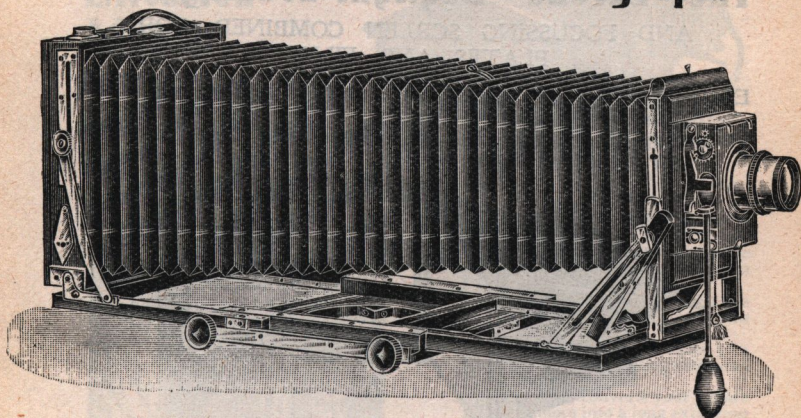
Lancaster Triple Extension Stand Cameras.**The 1911 "Excelsior Instantograph."**

Illustration shows Camera with the Swing Front slightly extended.

SPECIFICATION—

CAMERA constructed of seasoned mahogany highly polished, Real Leather Bellows, of extra large size at front.

THE MOVEMENTS are all that the most expert photographer can possibly desire. Universal Rising, Falling, Swinging and Extending Front, Automatic Spring Locks to all movements for the normal positions. Independent Panel Rise and Cross Movement, Automatic Locking Stretchers to back of Camera, Four-way Swing Back, Reversing Back, Triple Extension by double racks and pinions, Plumb Indicator, Circular Level. Solid Brass Cast Turntable Top.

THE DOUBLE PLATE-HOLDER is of finest mahogany.

ROLLER BLIND SHUTTER, giving Time and Instantaneous Exposures with Speed Indicator.

THE TRIPOD is of best quality ash, three-fold.

PRICES.

Camera, Slide, Shutter, Tripod, and any of the following Lenses:—

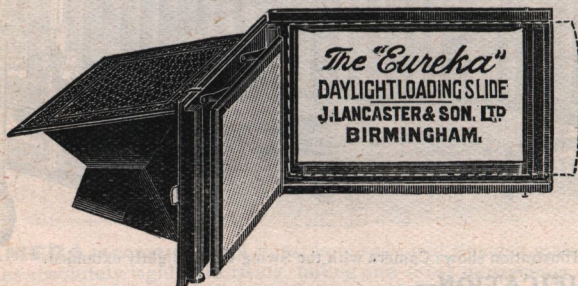
	1/4-pl.	5 x 4 and Post-card or 9 x 12 cm.	1/2-pl.	7 x 5 or 13 x 18 cm.	1/1-pl.	10 x 8	12 x 10
	£ s. d.	£ s. d.	£ s. d.	£ s. d.	£ s. d.	£ s. d.	£ s. d.
With Lancaster "Special" R.R. Symmetrical f/8 Lens ..	3 0 03	5 0 3	10 0 4	10 0 5	10 0 0	10 10 0	12 0 0
With Beck "Symmetrical" f/8 or "Busch" Lens ..	3 5 03	5 0 3	15 0 4	10 0 5	17 6	10 10 0	12 5 0
"Euryscope Rectigraph" f/6 Anastigmat or "Aldis" f/6 Anastigmat (1/4-pl., 7 x 5 and 1/1-pl., f/7.7)	4 5 04	10 0 4	15 0 5	10 0 8	0 0 13	0 0 15	0 0 0
Camera, Double Slide and Turntable ..	1 17 62	0 0 2	10 0 3	5 0 4	0 0 8	0 0 9	0 0 0
Extra Double Dark Slides ..	0 6 00	8 0 0	8 6 0	10 6 0	14 6 1	1 0 1	5 0 0

J. LANCASTER & SON, LTD., BIRMINGHAM.

Lancaster Daylight Loading Slide.**The "Eureka" Daylight Loading Slide**

AND FOCUSING SCREEN COMBINED, FOR
PLATES AND FILMS.

Entirely supersedes Roll Films and all other systems of Loading Plates or Films.
Focussing Hood dispenses with Focussing Cloth, even in strongest sunlight.



THE SLIDE in which the envelopes are used is constructed of selected Hardwood, Leather-covered, with Aluminium fittings. It is fitted with a Ground Glass Focussing Screen, with Folding Hood attached, the Slide taking the place of the ordinary Ground Glass Frame; thus there is no addition to the weight of Camera. The Ground Glass is at the back of the Slide when exposing, and automatically sets itself to the correct register for focussing.

THE ENVELOPES for carrying the Plates and Films are made of strong black paper, combining the maximum of strength and wearing qualities with the minimum amount of weight; they can be used over and over again for any number of exposures.

We make Envelopes for both Plates and Flat Films.

The Envelopes can be filled with any make of Plates or Flat Films.

The method of exposing the Plates or Films is of the most simple character; it is absolutely safe and light-tight, and it is impossible for it to fail or get out of order.

The Envelopes are made with a special light-trap, so that they can be handled in the strongest light without fear of fogging the most sensitive film.

PRICES:

	$\frac{1}{4}$ -pl. and 9 x 12 cm.	5 x 4 and Postcard.	$\frac{1}{2}$ -pl. and 13 x 18 cm.
Eureka Slide	16/-	16/-	20/-
Envelopes for Plates or Flat Films, per doz.	5/-	6/-	7/-

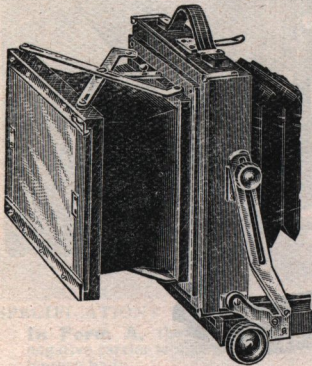
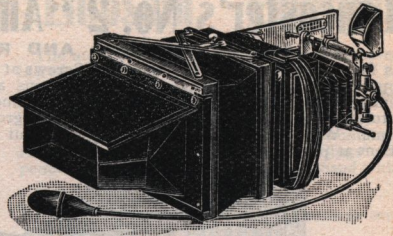
These Slides can be fitted to almost any existing Camera using dark slides at a cost of from 2/- to 3/- extra.

J. LANCASTER & SON, LTD., BIRMINGHAM,

The Lancaster Extension Adapter.

Trebles the scope and range of your ordinary Camera.

Model A for Folding Cameras.
Model C for Stand Cameras.



MODEL C.



MODEL A.

Each Model is made as follows:—

No. 2 converts your $\frac{1}{2}$ -plate Camera into a long extension Postcard Camera.

No. 3 converts your $\frac{1}{2}$ -plate Camera into a long extension $\frac{1}{2}$ -plate Camera.

No. 4 converts your 5×4 Camera into a long extension $\frac{1}{2}$ -plate Camera.

No. 5 converts your $\frac{1}{2}$ -plate Camera into a long extension $1/1$ -plate Camera.

Model A is constructed of ebonyed mahogany, with leather collapsible Belows and nickel-plated fittings, and is fitted with folding Focusing Hood, as illustration.

Model C is of similar construction to the Model A, in polished mahogany, but Focusing Screen is not hooded.

PRICES.

	No. 2. $\frac{1}{2}$ -pl. to $5\frac{1}{2} \times 3\frac{1}{2}$	No. 3. $\frac{1}{2}$ -pl. to $\frac{1}{2}$ -pl.	No. 4. 5×4 to $\frac{1}{2}$ -pl.	No. 5. $\frac{1}{2}$ -pl. to $1/1$ -pl.
	£ s. d.	£ s. d.	£ s. d.	£ s. d.
Model A—Complete with one Single Metal Slide, except No. 1	0 15 0	0 17 6	0 17 6	—
Model A—With best quality Double Dark Slide	1 0 0	1 5 0	1 5 0	—
Model C—With Single Metal Slide, except No. 1	0 12 6	0 15 0	0 15 0	—
Model C—With best quality Double Dark Slide	0 17 6	1 2 6	1 2 6	1 15 0
Extra Metal Slides	0 2 0	0 2 6	0 2 6	—
„ Double Slides	0 6 0	0 8 6	0 8 6	0 14 6
Carriers	0 1 0	0 1 0	0 1 0	0 1 6

For those requiring **Extra Extension only** to their Cameras, we now supply a new pattern of the Adapter (Model E) which is made in specially compact form, taking own Dark Slides and Focusing Screen.

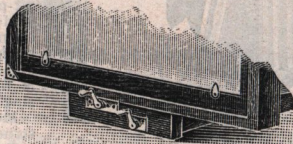
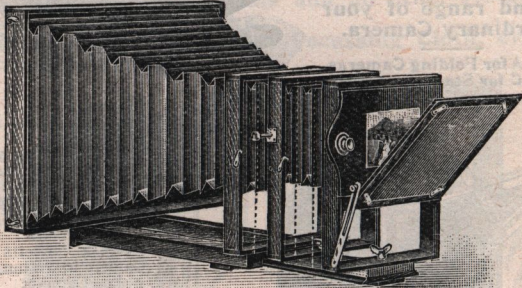
$3\frac{1}{2} \times 2\frac{1}{2}$ giving an extra extension of from 1in. to 6in. according to requirements	} 10/-
$\frac{1}{2}$ -pl. „ „ „ 2in. to gin. „ „	
5×4 „ „ „ 2in. to gin. „ „	} 12/6
P.C. ($5\frac{1}{2} \times 3\frac{1}{2}$) „ „ „ 2in. to gin. „ „	
$\frac{1}{2}$ -pl. „ „ „ 3in. to gin. „ „	} 15/-³

J. LANCASTER & SON, LTD., BIRMINGHAM.

Lancaster's No. 2 "Amateurs' C.M.P."

ENLARGING, COPYING AND REDUCING CAMERA

is fitted with two Wynche Focussing Screws at the Ground Glass end of Enlarger, operating on the centre portion carrying Lens and the end carrying Negative, thus enabling the desired size of enlargement and fine focussing to be obtained with the utmost ease and accuracy, the image on the ground glass being in view the whole time. We can also supply this Enlarger without Lens for use with customer's own Lens at prices as below.



The Enlarger is strongly made throughout. The Negative end is fitted with self-centring Carrier and a special light reflector, diffusing the daylight quite evenly over the whole Negative. The Camera is fitted with special Achromatic Enlarging Lens, two Diaphragms, Exposing Shutter, Fine Ground Glass Focussing Screen, Removable Dark Slide for Plates or Bromide Paper, &c., &c.

Prices complete to enlarge from $\frac{1}{4}$ -pl. and $\frac{1}{2}$ -pl. negatives to any size up to:—

10 x 8 £2 5 0 12 x 10 £2 12 6 15 x 12 £3 0 0

Extra cost for Special R.R. Enlarging Lens, 10 x 8 7/6 12 x 10 10/- 15 x 12 10/-

Carriers for any size Negatives under $\frac{1}{2}$ -pl., 1/- each.

Prices of Enlarger complete, but without Lens (customer's own Lens to be used):—

10 x 8 £2 0 0 12 x 10 £2 7 6 15 x 12 £2 15 0

Carriers for Dark Slide:— $\frac{1}{4}$, 5 x 4, 5 $\frac{1}{2}$ x 3 $\frac{1}{2}$, $\frac{1}{2}$, 1/1-pl., 1/- each. 10 x 8, 12 x 10, 1/6 each.

Lancaster's No. 1 "Amateurs' C.M.P."

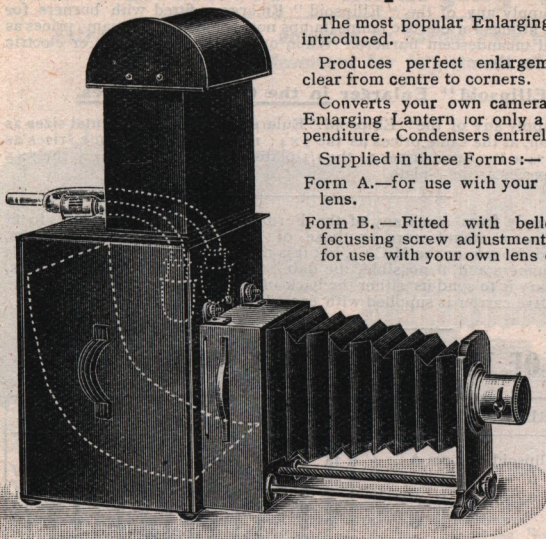
is similar in build to the No. 2, but without the two Wynche Focussing Screws and Reflector.

Will enlarge from $\frac{1}{4}$ -pl. or $\frac{1}{2}$ -pl. Negatives, and is fitted with Focussing Adjustment, enabling any size enlargement to be made up to the full size of camera. Self-centring Carrier, enabling Correction of Negatives, or Enlargement of any particular portion. Special Enlarging Lens and Diaphragms, with Exposing Shutter.

PRICES .. 10 x 8 .. 30/- .. 12 x 10 .. 35/- .. 15 x 12 .. 40/-

J. LANCASTER & SON, LTD., BIRMINGHAM.

Lancaster's 1911 "Ellipsoid" Enlarger



The most popular Enlarging Apparatus ever introduced.

Produces perfect enlargements, crisp and clear from centre to corners.

Converts your own camera into a complete Enlarging Lantern for only a few shillings' expenditure. Condensers entirely dispensed with.

Supplied in three Forms:—

Form A.—for use with your own camera and lens.

Form B.—Fitted with bellows front, with focussing screw adjustment (as illustration), for use with your own lens only.

Form C.—With bellows front, &c., and special R.R. enlarging lens as a complete enlarging lantern (as illustration).

Made for use with
Inverted incandescent gas,
electric lamps,
acetylene and
incandescent
spirit.

SPECIFICATION:

In Form A, the connecting portion to customer's camera—in which the negative carrier is also fitted—is of polished walnut with asbestos lining between lantern body.

In Form B, for use with customer's own lens only, a bellows extension is fitted with focussing screw adjustment, enabling exact focussing to be quickly and easily obtained.

In Form C, a special R.R. Enlarging Lens is supplied, giving enlargements of excellent definition.

The No. 3 "ELLIPSOID" ENLARGER. Lantern body is constructed of japanned tin and is fitted with white matt opal elliptical reflector, large cowl of improved design carrying all heat from burners. In the $\frac{1}{4}$ -plate, 5×4 and Post-Card sizes, one inverted burner is fitted. In the $\frac{1}{2}$ -plate and $1/1$ -plate sizes, two inverted burners are fitted.

The No. 4 "ELLIPSOID" ENLARGER is of the same construction as the No. 3, but is fitted with two inverted burners in the $\frac{1}{4}$ -plate, 5×4 and Post-Card sizes; and three inverted burners in the $\frac{1}{2}$ -plate and $1/1$ -plate sizes.

The No. 5 "ELLIPSOID" ENLARGER. The Lantern body is constructed throughout of Russian iron, fitted with superior quality inverted incandescent burners with both air and gas inlet regulators. Enlarger is also fitted with a lever tap for turning gas on and off. Two inverted incandescent burners in the $\frac{1}{4}$ -plate, 5×4 and Post-Card sizes, with three in the $\frac{1}{2}$ -plate and $1/1$ -plate sizes.

The No. 6 "ELLIPSOID" ENLARGER. Fitted with two special improved spirit incandescent burners with spirit reservoir. This model is specially constructed for use in India and the Colonies, or for wherever gas or electric light are not available. It is completely self-contained and generates its own gas.

J. LANCASTER & SON, LTD., BIRMINGHAM,

The "Ellipsoid" Enlarger for Acetylene or Electric Light.

We can supply any of the "Ellipsoid" Enlargers fitted with burners for acetylene or with fittings for electric lamps (lamps not included) at the same prices as with the inverted incandescent burners. When ordering for acetylene or electric please specify distinctly.

The "Ellipsoid" Enlarger in the Continental sizes.

We can supply any of the "Ellipsoid" Enlargers in the Continental sizes as follows: 9×12 cm. at the same prices as the 5×4; 13×18 cm. at the same prices as the $\frac{1}{2}$ -plate; 18×24 at the same prices as the 1/1-plate. We can also supply the 7×5 size at the same prices as the $\frac{1}{2}$ -plate.

We can supply from stock any of the Form A "Ellipsoid" Enlargers to fit cameras of our own manufacture or those of Messrs. Houghtons, Butchers, Thornton-Pickard, Kodak or the M.C.C., but it is necessary for customers to tell us the name of the camera and, if possible, the date. To fit cameras of other makers, all that is necessary is to send us either the back of the camera or one of the plate holders. A negative carrier is supplied with each Enlarger.

PRICES OF THE "ELLIPSOID" ENLARGER, etc.

PRICES.	$\frac{1}{2}$ -plate.		5×4 or Postcard		$\frac{1}{2}$ -plate		1/1-plate	
	£	s. d.	£	s. d.	£	s. d.	£	s. d.
The No. 3 "Ellipsoid" Form A ..	0	15 0	0	17 6	1	2 6	1	11 6
" 4 " " " " "	0	17 6	1	0 0	1	5 0	1	15 0
" 5 " " " " "	1	1 0	1	5 0	1	11 6	2	2 0
" 6 " " " " "	1	15 0	1	17 6	2	5 0	2	15 0
" 3 " " " " B ..	1	2 6	1	7 6	1	12 6	2	6 6
" 4 " " " " "	1	5 0	1	10 0	1	15 0	2	10 0
" 5 " " " " "	1	8 6	1	15 0	2	2 0	2	17 6
" 6 " " " " "	2	2 0	2	7 6	2	15 0	3	10 0
" 3 " " " " C ..	1	11 6	1	17 6	2	2 6	3	0 0
" 4 " " " " "	1	14 0	2	0 0	2	5 0	3	3 0
" 5 " " " " "	1	17 6	2	5 0	2	12 6	3	10 0
" 6 " " " " "	2	11 0	2	17 6	3	5 0	4	4 0
Opal Reflectors for replacing ..	0	2 0	0	3 0	0	3 6	0	5 0

Acetylene Generator for Acetylene "Ellipsoid."—18/6.

If Form A is fitted with an extra 4in. extension for use with single extension cameras the cost is 2/6 extra in any case.

Carriers for smaller Negative.— $\frac{1}{2}$ -plate to $3\frac{1}{2} \times 2\frac{1}{2}$ or $3\frac{1}{2}$ square, 1/- each; 5×4 or $5\frac{1}{2} \times 3\frac{1}{2}$ to $\frac{1}{2}$ -plate, or $3\frac{1}{2} \times 2\frac{1}{2}$, 1/3 each; $\frac{1}{2}$ -plate to 5×4 or $5\frac{1}{2} \times 3\frac{1}{2}$ or $\frac{1}{2}$ -plate, 1/6 each; 1/1-plate to $\frac{1}{2}$ -plate, 2/- each. Carriers to special sizes, under $\frac{1}{2}$ -plate, 1/6 each; above $\frac{1}{2}$ -plate, 2/- each.

Flexible Metallic Tubing for connecting Enlarger to gas supply, with rubber connections, per length:—4 ft., 1/8; 5ft., 2/-; 6ft., 2/4; 8 ft., 3/-; 10ft., 3/8. Longer lengths, 4d. per foot extra.

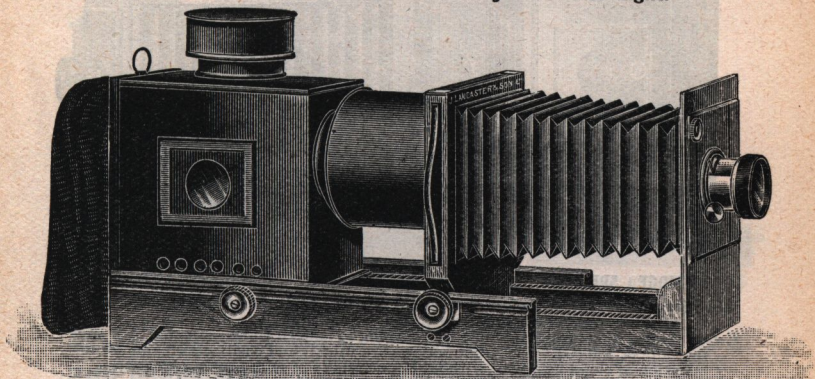
Ruled Focussing Screens, for quick and accurate focussing, $\frac{1}{2}$ -plate, 6d.; 5×4, 8d.; $5\frac{1}{2} \times 3\frac{1}{2}$ plate, 8d.; $\frac{1}{2}$ -plate, 9d. each.

Orange Caps for exposing 1 to 1½ in. diameter, 1/- each; 1½ to 2 in., 1/3 each.

J. LANCASTER & SON, LTD., BIRMINGHAM.

The "Excelsior" Enlarging Lantern.

Extra Long Extension, actuated by Double Rack and Pinion.
Rack and Pinion Movement for Adjustment of Light.



Woodwork of Solid Oak, exceptionally well constructed throughout.

Very Rigid Front, extended by double rack and pinion

Extra Long Extension, ample for reducing to lantern slides.

Removable Lens Panel, with rising and falling adjustment.

Reversible Carrier for horizontal or vertical negatives, and allowing any portion of negative to be placed in centre of the condenser.

Russian Iron Lantern, of extra large size, taking any illuminant, and fitted with velvet curtain allowing ample ventilation. Light-tight Cowl and three-draw extension tubes. Removable ground glass diffusing screen.

Rack and Pinion Movement for the adjustment of the light.

Plano-Convex Condenser of the best quality in **Solid Brass Mount**.

Portrait Objective with Rack and Pinion Focussing Adjustment and **Iris Diaphragm**, or special quality F/7.7 R.R. lens, or **Lancaster F/6 Anastigmat**, or **Aldis F/6 Anastigmat**. **Orange Cap** for adjusting bromide paper.

Prices.	Without Illuminant.	Without Objective.	With Portrait or F/7.7 R.R. Lens.	With Lancaster F/6 Anastigmat or Aldis F/6 do.
No. 1.	With 4½ in. Condenser	£2 2 6	£2 17 6	£4 2 6
No. 2.	„ 5½ in. „	2 10 0	3 5 0	4 10 0
No. 3.	„ 6½ in. „	3 10 0	4 5 0	5 15 0
No. 4.	„ 8½ in. „	4 5 0	5 5 0	6 15 0

ILLUMINANTS :

EXTRAS.

	£	s.	d.
Jet, Incandescent Burner and Mantle	0	3	6
Do do with large Reflector and Support	0	6	0
Three-wick Oil Lamp	0	6	6
Incandescent Spirit Vapour Lamp	0	10	6
Nernst Filament Electric Lamp	0	12	6
Two-Burner Acetylene Jet, Generator, etc., complete	1	1	0

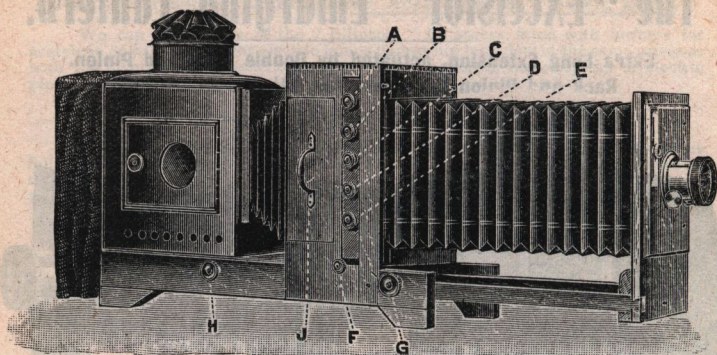
Double Carrier for lantern slides for the No. 1, 2/9.

Carriers for smaller negatives ¼-plate; to any size under, 1/..

5 × 4, or 5½ × 3½ to sizes under, 1/3; ½-plate, to sizes under, 1/6.

J. LANCASTER & SON, LTD., BIRMINGHAM.

LANCASTER'S "EXHIBITION" ENLARGING LANTERN.



ABRIDGED SPECIFICATION OF THE "EXHIBITION" ENLARGING LANTERN.

Woodwork of Solid Oak and of the very best construction throughout, securing absolute rigidity at every point.

Extra Long Extension, ample for reducing to lantern slides, actuated by double rack and pinion (G). The front bellows are quickly and easily detachable for the insertion of cloud negatives without the necessity of withdrawing the carrier.

Removable Lens Panel, with rising and falling adjustment.

The Carrier is fitted with the following adjustments:—

- (F) **Swing Movement**, actuated by rack and pinion for correction of distortion.
 - (C) **Rotating Movement**, for reversing from horizontal to vertical, or for correction of negatives out of the square.
 - (E) **Rise and Fall Movement**, actuated by rack and pinion.
 - (A) **Cross Movement**, actuated by screw adjustment. The rise and fall and cross movements allow any portion of the negative to be placed in the centre of the condenser.
 - (B & D) **Masking Adjustment**, enabling the easy selection of the best part of the negative for enlarging from. Independently working vertical and horizontal masking devices, each actuated by screw adjustments.
- Each pinion head operating the different adjustments is clearly engraved with the movement it operates.

Russian Iron Lantern Body of extra large size, taking any illuminant. Rack and pinion adjustment to lantern body for adjustment of the light. (H) Curtain to back, allowing full ventilation (not shown in illustration).

Condenser of the finest optical quality and mounted in solid brass. The condenser is fitted to lantern in an entirely new way, allowing it to be withdrawn and inserted with the utmost ease and quickness (J).

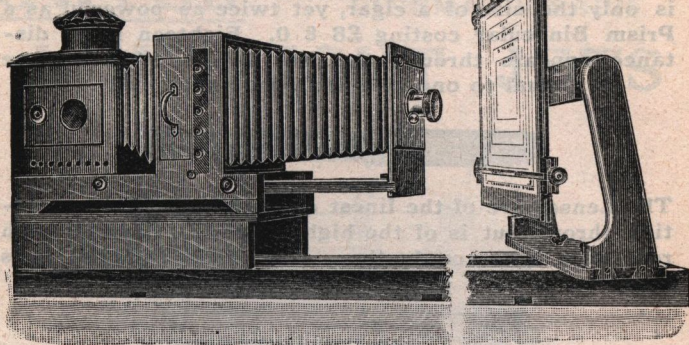
Portrait Objective of the best quality, or special quality **F/7.7 R.R. Lens**, or **Lancaster F/6** or **Aldis F/6 Anastigmat** at prices as below.

PRICES.	Without Objective.	With Portrait Lens or F/7.7 R.R. Lens.	With Lancaster or Aldis F/6 Anastigmat.
$\frac{1}{2}$ -plate, with $5\frac{1}{2}$ in. Condenser.	£5 10 0	£6 10 0	£7 3 0
5 by 4, or Postcard, with $6\frac{1}{2}$ in. Condenser	6 10 0	7 15 0	8 12 6
$\frac{3}{4}$ -plate, with $8\frac{1}{2}$ in. Condenser	8 10 0	10 0 0	12 7 6

ILLUMINANTS AND EXTRAS SEE PAGE 383.

J. LANCASTER & SON, LTD., BIRMINGHAM.

LANCASTER'S "EXHIBITION" ENLARGING EASEL & BASEBOARD.



ABRIDGED SPECIFICATION.

WOODWORK OF SOLID OAK, dovetailed and screwed together and of extra strength, thus ensuring absolute rigidity and steadiness at every point.

THE BASEBOARD is hinged in the centre, and folds into a small space for storing purposes. It is fitted with large wooden bolt, rigidly locking the base when extended.

THE TABLE carrying lantern is fitted with four "Domes of Silence," which run in grooves on the baseboard, allowing lantern to be easily moved backwards and forwards if desired.

THE EASEL is fitted with the following adjustments:—

HORIZONTAL SWING with automatic locking device.

VERTICAL SWING with screw clamping.

ROTATING MOVEMENT for reversing from horizontal to vertical, or for correcting negatives out of the square.

FOR FIXING THE BROMIDE PAPER TO THE EASEL three alternative ways are arranged for, as follows:—

(1) The front of the Easel is of **CORK CARPET**, on to which the bromide paper can be pinned, and a box of special pins is sent with each Easel. The front of the Easel is ruled with all sizes from $\frac{1}{4}$ -plate upwards.

(2) **SPRING CLAMPING BARS** (removable) which can be moved up and down Easel by double rack and pinion movement from $\frac{1}{4}$ -plate to the full size of Easel. The bars are also rebated on one side and can be reversed on Easel, thus securely holding any size plate for the making of enlarged negatives. A detachable black card is also fitted to prevent any halation when enlarging on to plates.

(3) **A DETACHABLE HINGED FRAME**, holding a piece of **PATENT PLATE GLASS**, under which the bromide paper can easily and quickly be placed.

THE EASEL can be swung horizontally level for easily fixing the bromide paper, and then swung vertically again by an automatic clamping device without clamping or loosening a single screw.

THE EASEL can be moved backwards and forwards on baseboard, and locked in position by clamping screw.

PRICES.	Easel taking Bromide Paper up to 15 by 12.	Easel taking Bromide Paper up to 20 by 16.
The "Exhibition" Baseboard and Easel complete	£3 10 0	£4 5 0
The "Exhibition" Baseboard only	1 0 0	1 5 0
The "Exhibition" Easel only	2 10 0	3 0 0

J. LANCASTER & SON, LTD., BIRMINGHAM.

Lancaster's "IDEAL" Telescope

is only the size of a cigar, yet twice as powerful as a Prism Binocular costing £8 8 0. Eighteen miles distance appears through the No. 5 "Ideal" Telescope equal to one mile with the naked eye.



The Lenses are of the finest quality, and the construction throughout is of the highest grade. Covered with real hard morocco leather, and exposed metal parts polished dull black.

PRICES, complete in Leather Bag:—

No. 1—Magnifying 9 diameters. Brass Mounted.	Weight, 3½ oz.	£0 12 6
No. 1a—Ditto ditto Aluminium Mounted	„ 1¾ oz.	0 17 6
No. 3—Magnifying 12 diameters, and fitted with Fine Focussing Adjustment. Brass Mounted.	Weight, 4 oz.	1 1 0
No. 3a—Ditto ditto Aluminium Mounted.	„ 2 oz.	1 7 6
No. 5—Magnifying 12 and 18 diameters with Pancratic Eyepiece and Fine Focussing Adjustment. Brass Mounted	Weight, 5 oz.	1 5 0
No. 5a—Ditto ditto Aluminium Mounted.	„ 2½ oz.	1 12 6
No. 7—With larger Objective Lens, giving larger field, Pancratic Eyepiece, Magnifying 12, 15, and 18 Diameters, Fine Focussing Adjustment. Brass Mounted	Weight, 7 oz.	1 10 0
No. 7a—Ditto ditto Aluminium Mounted.	„ 3½ oz.	1 17 6

Stiff Leather Tubular Cases for any of the above, 1/6 each.

Lancaster's Catalogue of Enlarging Apparatus.

Enlarging Cameras, "Ellipsoid" Enlargers, Enlarging Lanterns, Esels, etc., etc. Post free on application.

Lancaster's Catalogue of Optical Lanterns, Accessories, etc.

Post free on application.

Lancaster's Catalogue of Astronomical Telescopes, and Sets of Lenses for constructing Telescopes.

Post free on request.

J. LANCASTER & SON, Ltd.

ESTABLISHED 1835. 275, Broad Street, Birmingham.