



Montgomery Ward Photographic Catalog

REVISED EDITION · EXPIRES SEPTEMBER 30, 1945

"NOTICE TO CUSTOMERS: No price for any article listed or described herein exceeds the ceiling price for that article as determined under the applicable maximum price regulation issued by the Office of Price Administration. As required by that Office, we will, upon request, furnish you with a statement of our maximum prices on any of the commodities listed about which you inquire." Montgomery Ward & Co.

Camera pictured above is Eastman Kodak Medalist listed on Page 7. Albums are on Inside Back Cover.



S. V. E. Kodachrome Transparencies

Start a library or add to your collection of full color Kodachrome slides with transparencies selected for their superb photography and brilliance of color from the vast slide library of Society for Visual Education. Entertaining and educational.

S.V.E. transparencies are boxed in sets of 5 with one-piece fiber-cushioned binders. Protective cover glasses. Size 2 by 2 in.—fit any standard projector. *Postpaid.* Order by Catalog Numbers below. Per Set of 5.....\$2.50

67 CM 3324T—**NIAGARA FALLS.** Amer. Falls from "Maid of Mist"; Brink; Canadian side; Bottom of Falls; Rainbow.

67 CM 3326T—**GARDEN OF THE GODS.** Gateway; Gateway from Hidden Inn; Pike's Peak; Rocks; Seal and Bear Rocks.

67 CM 3327T—**YELLOWSTONE NATIONAL PARK.** Firehole River; Lower Falls; Old Faithful; Punch Bowl; Wooded Yellowstone Canyon.

67 CM 3328T—**ZION NATIONAL PARK.** Angels' Landing; Mt. Majestic; Spear Head—Cathedral Mts.; Three Patriarchs; Valley from Court of Patriarchs.

67 CM 3329T—**BANFF NATIONAL PARK.** Cascade Mountain; Consolation Lake; Lake Hector—Waputik Range; Mount Rundle—Vermilion Lake; Lake Louise.

67 CM 3330T—**YOSEMITE NATIONAL PARK.** Booth Lake; "El Capitan"; Mirror Lake; Valley stream; Pine trees.

67 CM 3331T—**BEAUTIFUL HAWAII.** Honolulu, Aloha Tower; Hula Dancer; Liner at dock; Tree-climbing; Waikiki.

67 CM 3325T—**CARLSBAD CAVERN NATIONAL PARK.** Cavern Entrance; Interior; Museum; Stalagmites and Stalactites; Typical Limestone Formations.

67 CM 3320T—**EDISON INSTITUTE MUSEUM** (Dearborn Village). Chapel, Colonial Church; Independence Hall, Menlo Park; Post Office; Apothecary Shop; Waterford country store.

67 CM 3321T—**NEW YORK CITY.** Battery Park; Coenties Slip; Manhattan; St. Patrick's Cathedral; Skyline.

67 CM 3322T—**CHICAGO.** Field Museum; Michigan Boulevard; Maxwell Street; Oak St. Beach; Old Water Tower.

67 CM 3323T—**ZOO ANIMALS.** Camel; Lion; Polar Bears; Tiger; Zebra, Nursing. (Views of three zoos.)

Selected Walt Disney Transparencies

Entertain in your home with Disney Characters. Full-color slides reproduced from master films of Disney feature pictures. For 35mm. projector or viewer. Order by Catalog Number. *Postpaid.* Each Group of Ten Slides.....\$2.50

67 CM 3332T—**FAMOUS DISNEY CHARACTERS.** Ten closeups of 24 characters.

67 CM 3333T—**STORY OF PINOCCHIO.** Selections from major scenes.

67 CM 3334T—**SNOW WHITE AND THE 7 DWARFS.** Also, the Prince; Old Witch.

67 CM 3335T—**EXCERPTS FROM FANTASIA.** Ostrich Ballet, Centaurettes, etc.

67 CM 3336T—**THE STORY OF BAMBI.** The deer, and his forest companions.

67 CM 3337T—**DUMBO.** Adventures of the little elephant with big ears.

(See Page 19 for Hollywood Viewer, Page 18 for Projectors, to show Disney or S.V.E. Slides.)



FAMOUS Disney CHARACTERS

1. Mickey Mouse, oldest of the famous Disney Characters, has starred in more pictures than any other Hollywood actor. He is popular because he is just the "average guy." Plain, his uncanny dog, is a completely devoted pal. In this picture they are having a restful evening by the fire after a day of busting.



FAMOUS Disney CHARACTERS

7. Bambi, the new born fawn and his friend, Thumper, the rabbit, meet a little skunk. Bambi mistakenly believes the skunk's name is "Thumper." Flower is a very shy and timid little creature, unlike Thumper, who always says what he thinks and is at all times cheerfully unconcerned.



FAMOUS Disney CHARACTERS

2. Donald Duck is now one fellow with big ideas who can't quite put them across. Although he takes duty as hero on the ship, he always chases off his nephews and tries to take it on the ship. In this scene he takes a girl friend for a ride in his new auto.



FAMOUS Disney CHARACTERS

6. Dumbo, the little elephant with the enormous ears, is about to make his first appearance under the big top. He is recapturing his old-time excitement from his mother. Timbity, the mouse who reminds him to wave the little flag, Dumbo has a series of mishaps, but finally becomes a great success when he learns to fly.

George H. Woodward
Nov. 1945

Use Wards Convenient Time Payment Plan

MANY THINGS IN THIS CATALOG ARE SAME PRICE. CASH OR TERMS

Consider the many advantages of Wards Time Payment Plan. Buy the camera you really want and need, rather than just the one for which you have ready cash. Enjoy the convenience of being able to buy what you need, in the quality you prefer, and the advantage of being able to use the merchandise as you pay for it a little each month out of income. Include accessories to get the most from your camera.

On cameras and many other items in this Catalog there is no extra charge for credit. Such items are so indicated in the descriptions. On all other items a carrying charge is added; see table at right. This small carrying charge is added to the balance remaining after deducting the Down Payment. Where a carrying charge is added you always know exactly how much it is at Wards whether you buy by Mail or in a Ward Store or Catalog Office. There are no hidden charges.

Wards Time Payment Plan is available to any responsible person with a regular income. No security is asked—no co-signers required. We depend on your integrity and ability to pay. Just follow the instructions below. Simply fill in application on back of order blank and write your order on other side. Credit orders are quickly checked.

Any order totaling \$10 or more may be bought on time. Down payment on items priced under \$10 is 10%. On items in this Catalog priced \$10 or more, Government rules require 33⅓% down. For orders including items above and below \$10 figure down payments separately; then add. For monthly payments see table at right.

If Unpaid Balance is	Carrying Charges Are	Monthly Payment is
Up to \$11.00	\$.50	\$5.00
\$11.01-13.00	.75	5.00
13.01-16.00	1.00	5.00
16.01-18.00	1.25	5.00
18.01-20.00	1.75	5.00
20.00-22.00	2.00	5.00
22.01-24.00	2.20	5.00
24.01-26.00	2.40	5.00
26.01-28.00	2.60	5.00
28.01-30.00	2.80	5.00
30.01-33.00	3.00	5.00
33.01-36.00	3.25	5.00
36.01-40.00	3.60	5.00
40.01-45.00	4.00	5.00
45.01-50.00	4.50	5.00
50.01-55.00	5.00	5.00
55.01-60.00	5.50	6.00
60.01-66.00	6.00	6.00
66.01-71.00	6.60	7.00
71.01-77.00	7.00	7.00
77.01-82.00	7.70	8.00
82.01-88.00	8.00	8.00
88.01-92.00	8.70	9.00
92.01-99.00	9.00	9.00
99.01-104.00	9.80	10.00
104.01-110.00	10.00	10.00
110.01-115.00	11.00	11.00
115.01-120.50	11.50	11.00
120.51-126.00	12.00	12.00
126.01-131.50	12.50	12.00
131.51-137.00	13.00	13.00
137.01-142.50	13.50	13.00
142.51-148.00	14.00	14.00
148.01-153.50	14.50	14.00

Write for terms on larger orders

The Down Payment is figured on the Total Price (Cash price plus Tax and Prepaid Shipping Charges if any). The Unpaid Balance is Total Price less Down Payment.

It's easy to order by mail from Wards, either for cash or on time payments. Use the convenient Ward order blank.

Many items in this Catalog are Postpaid, as indicated in descriptions. For items not postpaid, include postage.

Packages not over 70 lbs. and not more than 100 in., length plus widest girth, are mailable to all zones.

Parcel Post Rates are as follows:

2 oz. or less...1½c 3 or 4 oz.3c
5 or 6 oz.4½c 7 or 8 oz.6c

Zone	Local	1 & 2	3	4	5
Miles		to 150	151-300	301-600	601-1000
1 lb.	8c	9c	10c	11c	12c
2 lbs.	9c	11c	12c	15c	18c
3 lbs.	9c	12c	14c	18c	23c
4 lbs.	10c	13c	16c	22c	28c
5 lbs.	10c	14c	18c	25c	34c
7 lbs.	11c	16c	22c	32c	44c
10 lbs.	13c	19c	28c	43c	61c
15 lbs.	15c	25c	38c	61c	89c
20 lbs.	18c	31c	50c	82c	\$1.21
21 lbs.	19c	33c	53c	87c	1.27
22 lbs.	19c	34c	55c	90c	1.32
23 lbs.	20c	35c	57c	94c	1.37
24 lbs.	20c	36c	59c	97c	1.43
25 lbs.	21c	37c	61c	\$1.01	1.48
26 lbs.	21c	38c	63c	1.04	1.53
27 lbs.	22c	39c	65c	1.08	1.60
28 lbs.	22c	40c	67c	1.11	1.65
29 lbs.	23c	41c	69c	1.15	1.70
30 lbs.	23c	42c	71c	1.18	1.75
31 lbs.	24c	44c	73c	1.23	1.81
32 lbs.	24c	45c	75c	1.26	1.86
33 lbs.	25c	46c	77c	1.30	1.92
34 lbs.	25c	47c	79c	1.33	1.98
35 lbs.	26c	48c	81c	1.37	2.03
36 lbs.	26c	49c	83c	1.40	2.08
37 lbs.	27c	50c	85c	1.44	2.14

DO YOU NEED A CAMERA, OTHER RESTRICTED ITEMS? HOW TO OBTAIN

Any person needing a camera or other restricted photo equipment in his business or profession is eligible for an MRO rating. Restricted items listed in this Catalog are indicated by a star in front of the catalog number (as ★67 CMN 309T). In ordering any item so indicated, follow these instructions:

Sign CMP-7 Endorsement on back of Ward Order Blank and enter MRO rating of AA-5 or higher if assigned to your business and the Catalog Numbers of restricted items ordered. A rating of AA-3 is the lowest under which the manufacturers can furnish an estimated delivery date at the present time due to high rated priority orders on hand.

Ratings of AA-5, AA-4 or approved 1319 Forms will be accepted only for future delivery (6 mos. to 1 yr.).

This rating may be used to buy up to \$500 worth of restricted photographic equipment at a time.

Those not eligible to purchase above should apply to WPB for authority to buy. Use WPB Form 1319—obtain form from WPB Office or Ward Mail Order House or Catalog Office.

PRIORITY RATINGS

Important: Under present conditions, manufacturers' limited production makes it almost impossible to fill all priority rated orders without serious delays. Although ratings of AA-5 and approved, WPB 1319's are acceptable, Wards recommends that only ratings of AA-3 or higher be sent on orders for the restricted merchandise listed herein.

Due to rapidly moving events, restrictions may be revised or removed during life of this Catalog. Wards will have photographic merchandise on any changed basis as soon as available. Watch your newspapers for day-to-day information. If in doubt, write Wards.

FACTORY SHIP OR TRANSFER. Priority merchandise is shipped to you from factory—allow extra time. All such items have "T" at the end of Cat. No.

However, there are also stocked, non-priority items with "T" at end of Cat. No. which are not shipped from all Ward Houses. In such cases order is transferred for shipment. In any case send order to nearest Ward Mail Order House and allow postage from there on items not Postpaid.

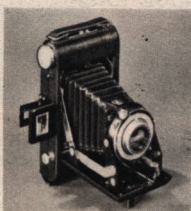
MONTGOMERY WARD

Chicago • Baltimore • Albany • St. Paul • Denver • Kansas City • Portland, Ore. • Oakland • Ft. Worth

Which Type of Camera Should I Buy?



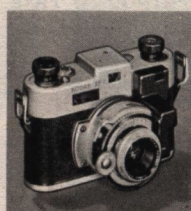
Box Type



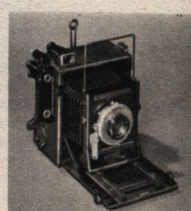
Folding



Reflex



Miniature



Press Types

There are five principal types of cameras in general use. A typical example of each is pictured above. Information on each type is given below. If you are not now thoroughly familiar with cameras we are sure these facts will help you select the camera best suited to your needs. Consider the following factors:

Conditions under which you wish to take pictures; Types of pictures you want; Types of subject matter you will photograph; Size of print you desire (no longer so important with many fine cameras, due to quality and low cost of enlargements); Amount you wish to

spend; Will you want to take color pictures? Within reasonable limits, do not permit cost to prevent you from getting the camera you need—see Page 3. (Box and Reflex cameras not offered in this Catalog due to war conditions.) The capacity and range of any camera type are subject to considerable variation due to lens, shutter, finder and other features.

Read the information on lenses and shutters (and filters) on opposite page before making your final choice. For more details on cameras and equipment, consult Photographic Books listed on Page 26.

Box Type

Simplest. Most economical. Usually fixed-focus, single meniscus lens. Good pictures of average still subjects 8 ft. or more away in good light on black and white film. Takes Kodacolor in bright summer light. Usually 1 snapshot speed— $\frac{1}{25}$ second. May or may not take time exposures. Finder may be eye- or waist-level. Design may be as shown or one of the modern streamlined models.

Folding

Compact. Made in range from one functionally as limited as box type to combinations of fine lenses, other features to handle wide range of subject matter, light, speed, distance, on black and white film. Take Kodacolor in bright summer light. Finder may be eye- or waist-level. Give good album size contact prints. Well suited to average amateur seeking good pictures.

Reflex

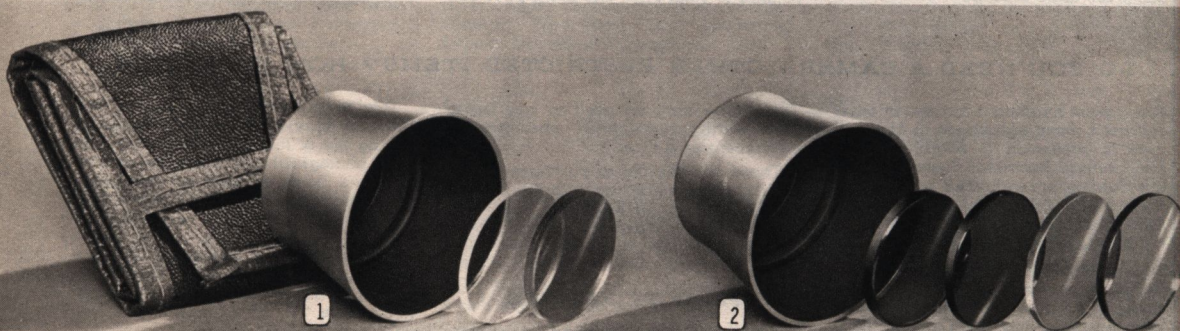
Chief feature is direct vision finder—you see in ground glass and focus upon exactly what you take, picture size. Has been made in range from simple box camera type plus reflex feature, to combinations of fine lenses, fast shutters. If you want positiveness of ground glass, plus operation speed, but compactness is not needed, buy a reflex equipped for picture range you want.

Miniature

Includes 35mm. and Bantams. Compact. Speedy operation. Low film cost; more exposures without re-load. Used for popular "candid" shots, but has features commending it to any serious photographer. Variety of combinations of lenses and other features. Excellent for Kodachrome or black and white film. Not difficult to use, but requires more study and precision than simpler types of cameras.

Press Types

So called because dependability, versatility, ruggedness, large prints, make them favorites for press photography when compactness is not vital. Same qualities make them ideal for many other photographers. Include famous Speed Graphic and Graflex. Features such as reflex ground glass focusing, focal plane shutter, fine lenses. For the professional or advanced amateur.



Ciné-Kolor Filter Kit for Movie Cameras

[1] For use with 8mm. movie cameras, including Revere, Keystone, Bell and Howell $\frac{1}{3.5}$, Wollensack $\frac{1}{2.5}$, Univex $\frac{1}{3.5}$ and $\frac{1}{2.7}$. Kit consists of 1 screw-in type metal sunshade, 1 Kodachrome Type A filter, 1 Kodachrome haze filter, and pouch case for protection and convenience in carrying. A compact, versatile outfit that will greatly widen the feasible range of your movie camera and help you to produce better pictures. Shipping weight 4 oz.

67 CM 2216T—Complete Kit, \$4.49; plus 25¢ Federal Excise Tax. Total price you pay.....\$4.74

(Movie Cameras are listed on Page 30 of this Catalog.)

Argus Filter Kit for Models C2 and C3

[2] Includes four popular filters: one Haze; one Green (G1); one Yellow (Y1) and one Red (R2). Screw-on type metal sunshade is also included. All fit compactly into the pouch case for protection and convenience in carrying. Shipping weight 5 ounces.

67 CM 2215T—Complete Kit, \$6.29; plus 40¢ Federal Excise Tax. Total you pay.....\$6.69

"T" at end of Catalog Numbers on these 2 pages means item is not stocked at all Ward Houses. However, send your order to nearest Ward House, allowing postage from there. Order will be shipped from nearest Ward House stocking the item.

How to Select Lenses, Shutters, Filters

Lenses and Shutters Should Be Correlated

The lens is most vital part of the camera. Choice of camera, beyond type features (opposite page) is largely a choice of lens. As finer, faster, more versatile lenses are employed, operating features of camera should keep pace. Well-designed cameras, such as Wards list, have shutter, focusing, etc. consistent with lens latitude. But, for any given lens, there are some feasible variations dependent upon how you wish to use camera.

To photograph moving objects clearly a short exposure is essential. Lens speed depends upon the amount of light gathered in a given time. So, fast lenses are superior not only for moving subjects, but also for poor light. A fast lens can be stopped down for still subjects or bright light.

Lens speed is expressed by a symbol as $f/8$ —a lens with a diameter $\frac{1}{8}$ its focal length (distance from optical center of lens to film when focused for distance). The smaller the f -number, the faster the lens. Thus, an $f/6.3$ is about 6 times as fast as lens used on most box cameras; an $f/4.5$ twice as fast as $f/6.3$; an $f/3.5$ is $1\frac{1}{2}$ as fast as $f/4.5$; and $f/2$ is 3 times as fast as $f/3.5$. Speed is not the only feature.

Simple lenses cannot give sharp, true pictures under many conditions, due to "aberrations." For example, failure to show both vertical and horizontal lines properly (astigmatism), or failure to focus different colors in same plane (a fault for either black and white or color film).

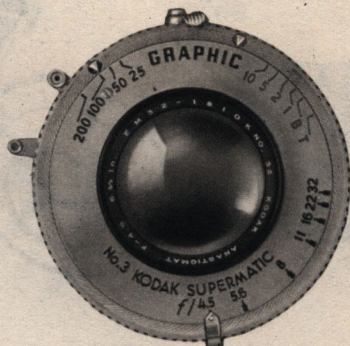
A corrected lens is built up of a number of elements, of different types of glass and with different curvatures. It gives better pictures under a wide

range of conditions, but requires accurate focusing, etc. In practice, "anastigmat" lenses usually have high correction for other factors also.

The simple lens in many box cameras gives satisfactory record pictures of subjects 8 ft. or more away in good daylight. Twindar and similar lenses permit pictures at close range. A good $f/6.3$ lens will also take many moving objects and snapshots in open shade. With an $f/4.5$ you can add rapidly moving objects and snapshots in deep shade or dark days. An $f/3.5$ will cover still faster action or dimmer light. With an $f/2$ or $f/1.9$ you are prepared to take such subjects as indoor night sports, night clubs, etc. The shutter controls length of exposure. For snapshots timing is automatic for speed you set. For "Time" a complete action opens and a second action closes. For "Bulb" lever is pressed, held the desired time, and released.

A shutter with a disc which passes before the lens, allowing but one snapshot timing—say $1/25$ second—is used with simple lenses. It may also adjust for Time or Bulb. The Between-the-Lens type has varying speed ranges— $1/500$ second in the Compur. If different lenses are to be used with this type, each must have its shutter or a convertible lens must be used. The Focal Plane shutter has a curtain with a slot that passes immediately before film. Regulating width of slot and speed with which it passes film, controls exposure time. Lenses used may be changed at will.

Better shutters are marked for easy setting to desired snapshot speed and for Time and Bulb exposures.

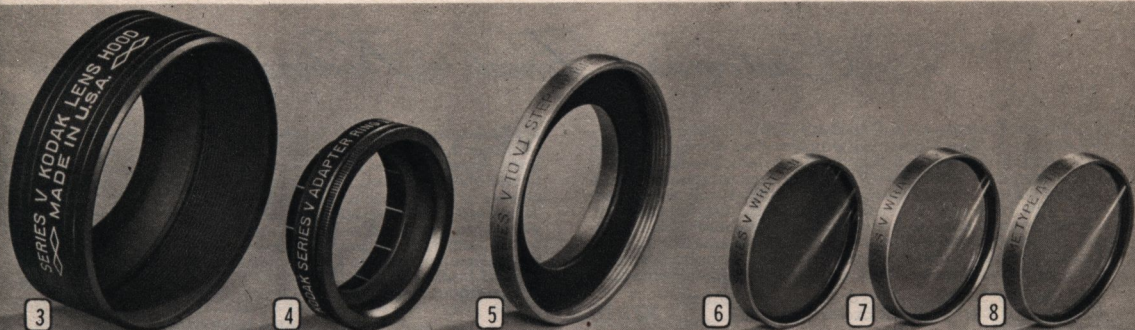


Filters, Lens Attachments

Filters and lens attachments will greatly extend the range of your camera. The correct filter makes it possible to obtain beautiful cloud effects while getting satisfactory register of foreground material. Filters also compensate for varying sensitivity of film to different colors in subject matter (for black and white or color film).

The use of filters is not complicated and can be mastered by any serious photographer, with ample benefits. However, considerable detail is involved and it is suggested that a book covering the subject in detail (see Page 26) be obtained. For example, on Page 201 of "Elementary Photography," is a complete, handy table on filter selection, with explanations.

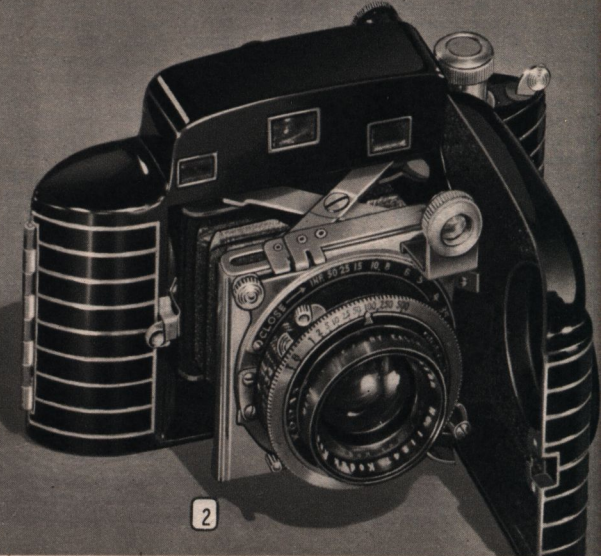
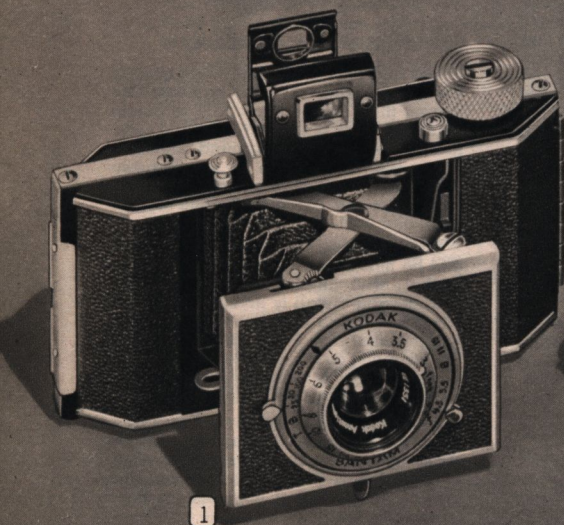
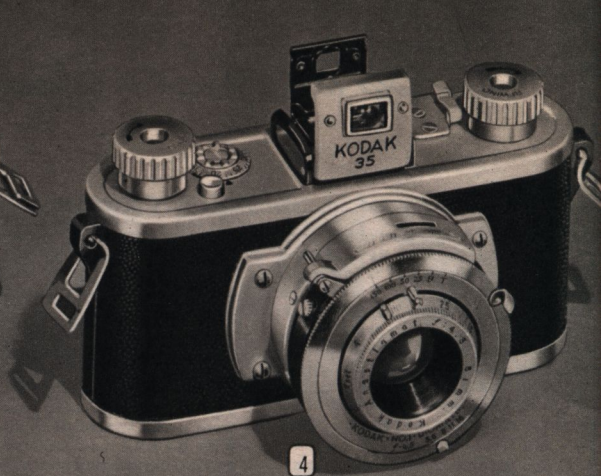
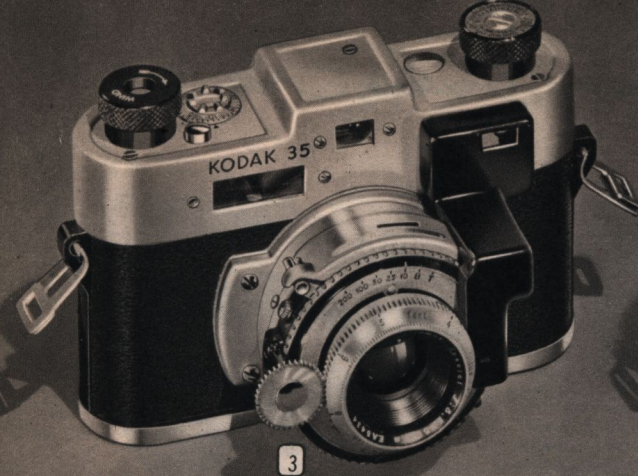
HOW TO ORDER FILTERS, ETC., LISTED BELOW. Order Adapter Ring same as outside diam. of lens mount, or next larger to $\frac{1}{32}$ in. Note Series (V or VI) of your lens and order Filters, Adapter Ring or Lens Hood of same series as lens.



Wratten Filters; Kodak Lens Attachments—See How to Order Above. Postpaid

- 3 KODAK LENS HOOD. Threads onto Retaining Ring.
67 CM 2203T—Series V. \$1.50; plus 25c Tax. Total... \$1.75
67 CM 2204T—Series VI. \$1.75; plus 28c Fed. Tax. Total... 2.03
- 4 KODAK ADAPTER RINGS. For fitting accessories.
67CM 2200T—Series V. Lens mount diam.: $\frac{3}{4}$, $\frac{7}{8}$, $1\frac{1}{16}$, $1\frac{1}{8}$, or $1\frac{1}{2}$ in. State Diam. Ea. 75c plus 12c Tax. Total... .87c
67 CM 2201T—Series VI. Lens mount diam.: $1\frac{1}{4}$, $1\frac{1}{2}$, $1\frac{3}{4}$, $1\frac{7}{8}$, $1\frac{15}{16}$, or $1\frac{1}{2}$ in. State Diam. wanted. Ea. 98c; plus 15c Fed. Excise Tax. Total... \$1.13
- 5 KODAK SERIES V TO VI STEP-UP RING. For use of Series VI Lens Hood, Filters on Ser. V Adapter ring.
67 CM 2202T—98c; plus 15c Fed. Excise Tax. Total... \$1.13

- 6 WRATTEN FILTERS. Colors: Med. Yellow (K2); Red (A); Light Green (X1); Orange (G). Cemented in "B" Glass. Unmounted. (Other colors supplied on request—write for prices.)
67 CM 2205T—Series V. State Color. \$1.45; plus 23c Tax. . \$1.68
67 CM 2206T—Series VI. State Color. \$1.73; plus 28c Tax. . 2.01
- 7 8 KODACHROME HAZE AND TYPE A FILTERS. For Ser. V or VI.
67 CM 2209T—HAZE FILTER. Series V. Price \$1.45; plus Federal Excise Tax of 23c. Total you pay... \$1.68
67 CM 2210T—Haze. Series VI. \$1.73; plus 28c Tax. Tot... 2.01
67 CM 2207T—Type A. Series V. \$1.45; plus 23c Tax. Tot. 1.68
67 CM 2208T—Type A. Series VI. \$1.73; plus 28c Tax. Tot. 2.01



Eastman's Finest Kodaks Offered in

1 KODAK BANTAM 1/4.5 CAMERA. CMP-7 Form required—see Pg. 3. Uses black and white or Kodachrome 828 size film. Kodak Anastigmat Special 1/4.5 lens produces clear cut negatives. Uses Series V, 1 1/4-in. lens attachments (see Page 5). Four shutter speeds: 1/25, 1/50, 1/100, 1/200 second, plus Time and Bulb settings. Focusing 2 1/2 ft. to infinity. Other features include folding optical eye-level finder, button-actuated "pop-out" front, body shutter release, hinged back, automatic film centering device. Complete instructions for operating included. Camera and Case Postpaid.

★67 CMN 309T—Price; cash or terms (see Page 3), \$25.00; plus \$2.18 Federal Excise Tax. Total..... \$27.18

★67 CM 310T—Leather Field Case for above camera.. 4.25

2 KODAK BANTAM 1/2.0 SPECIAL. CMP-7 Form required—see Page 3. Makes sharp black and white negatives, or brilliant Kodachromes. Kodak Ektar Anastigmat 1/2.0 lens uses Series V, 1 1/4-in. lens attachments (see Page 5). Supermatic shutter gives nine shutter speeds from 1 to 1/400 sec., plus Time and Bulb settings. Camera is designed to prevent double exposures. Split-image coupled range finder—focusing range from 3 ft. to infinity. Other features include handy shutter release, automatic film centering device, steel case with hinged back. Leather field case included—camera can be used without removing case. With complete instructions.

—Postpaid. Same price cash or terms
(see Page 3), NOT AVAILABLE

3 KODAK 35MM. CAMERA WITH RANGE FINDER. CMP-7 Form required—see Page 3. Makes critically sharp black and white negatives, or brilliant Kodachromes. Kodak Anastigmat Special 1/3.5 lens—uses Series VI, 1 1/4-in. lens attachments (see Page 5). Kodamatic self-timer shutter has five speeds, from 1/10 to 1/200 second, plus Time, Bulb and Delayed Action, and is designed to prevent double exposures. Equipped with split-field military-type range finder coupled to lens—provides sharp hair-line focusing. Focusing range 4 ft. to infinity. Instructions included.

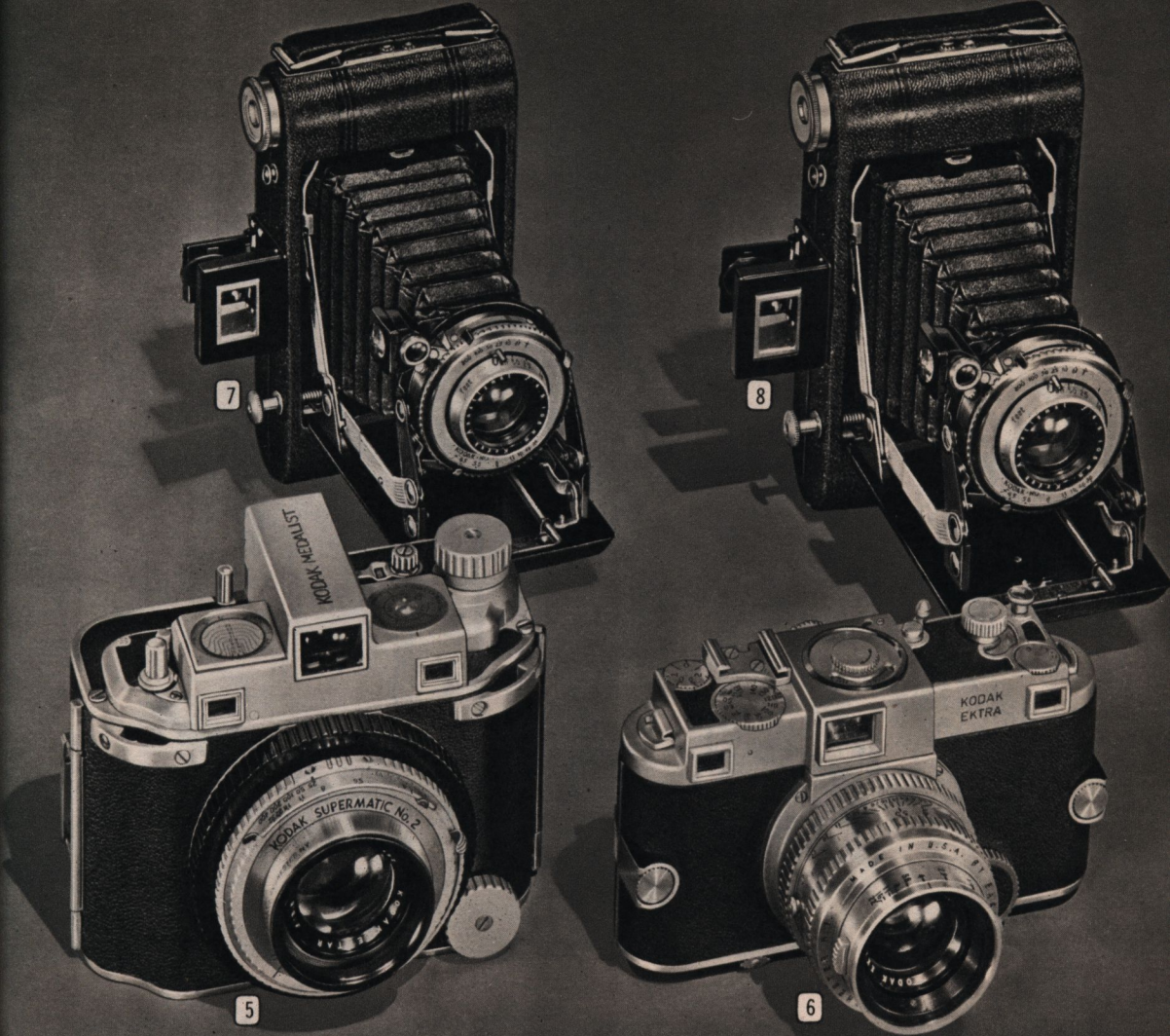
★67 CMN 318T—Postpaid. Same price cash or terms, \$50.50; plus \$4.40 Fed. Excise Tax. Total... \$54.90

67 CM 319T—Leather Case for above. Postpaid..... 7.00

4 KODAK 35MM. CAMERA. CMP-7 Form required—see Page 3. Makes sharp black and white negatives, or brilliant Kodachromes. With Kodak Anastigmat 1/4.5 lens, uses Series VI, 1 1/4-in. lens attachments (see Page 5). Optical eye-level finder. Equipped with Diomatic self-timer shutter with 4 speeds from 1/25 to 1/150 second, plus Time, Bulb, and Delayed Action. Shutter is designed to prevent double exposures—winding film for next exposure automatically cocks shutter. Has bracket for attaching Kodak Pocket Range Finder (not included with camera).

★67 CMN 314T—Postpaid. Cash or terms (see Page 3), \$26.00; plus \$2.26 Fed. Excise Tax. Total..... \$28.26

★67 CM 315T—Leather Case for above. Postpaid..... 4.95



35 mm., Bantam and Folding Models

[5] KODAK MEDALIST. CMP-7 Form required—see Page 3. Uses black and white or Kodacolor 620 roll film. Ektar f/3.5 lens has treated inner lens surfaces. Supermatic shutter with 9 speeds from 1 to 1/400 second, plus Time and Bulb. Lens and shutter mounted in helical gear focusing tube. Removable back permits use of accessory back listed below. Neck strap and instructions included. *Postpaid.*

★67 CMN 332T—Same price cash or terms \$176.00; plus \$16.50 Fed. Excise Tax. Total..... \$192.50

★67 CMN 333T—Accessory Back for Medalist. *Postpaid.* \$19.75; plus \$1.85 Federal Excise Tax. Total. 21.60

67 CM 334T—2 1/4 x 3 1/4-in. Film Pack Adapter. *Postpaid.* \$4.73; plus 47c Federal Excise Tax. Total.. 5.20

67 CM 335T—Copy and Close-up Extension Unit. *Postpaid.* \$6.75; plus 63c Federal Excise Tax. Total.. 7.38

★67 CM 336T—Leather Carrying Case. *Postpaid.*.... 12.50

[7] [8] KODAK VIGILANTS. CMP-7 Form required—see Page 3. Folding Cameras for album-sized prints. Kodak Anastigmat f/4.5 lens focusing from 3 1/2 ft. to infinity. Kodamatic shutter with 5 speeds from 1/10 to 1/200 second, plus Time and Bulb. Body shutter release. Eye and 2-way waist-level finders. Same price cash or terms. (Cases on Page 29.)

[7] ★67 CMN 109T—Vigilant Six-20. *Postpaid.* Picture size, 2 1/4 x 3 1/4, \$26.50; plus \$2.31 Fed. E. Tax. Total. \$28.81

[8] ★67 CMN 111T—Vigilant Six-16. *Postpaid.* Picture size, 2 1/2 x 4 1/4, \$30.85; plus \$2.69 Fed. E. Tax. Total. 33.54

[6] KODAK 35MM. EKTRA. CMP-7 Form required—see P. 3. Focal plane shutter—pre-set variable-slit type; 10 speeds from 1 to 1/1000 second, plus Bulb and Reflex Action. Designed to prevent double exposures. Built-in variable-power view finder provides complete correction for parallax, adjustable to individual vision. Split-hill type coupled range finder. Other features include interchangeable lens and magazine back; film-advance shutter wind lever; film-movement visible signal; rapid rewind crank; exposure counter. Instructions. Same price cash or terms. Cameras and accessories *Postpaid.*

—Kodak Ektra Camera with Ektar 50 mm. f/3.5 lens, NOT AVAILABLE

—Kodak Ektra Camera with Ektar 50 mm. f/1.9 lens, NOT AVAILABLE

—Telephoto, Ektar 135 mm. f/3.8 lens only for above, NOT AVAILABLE

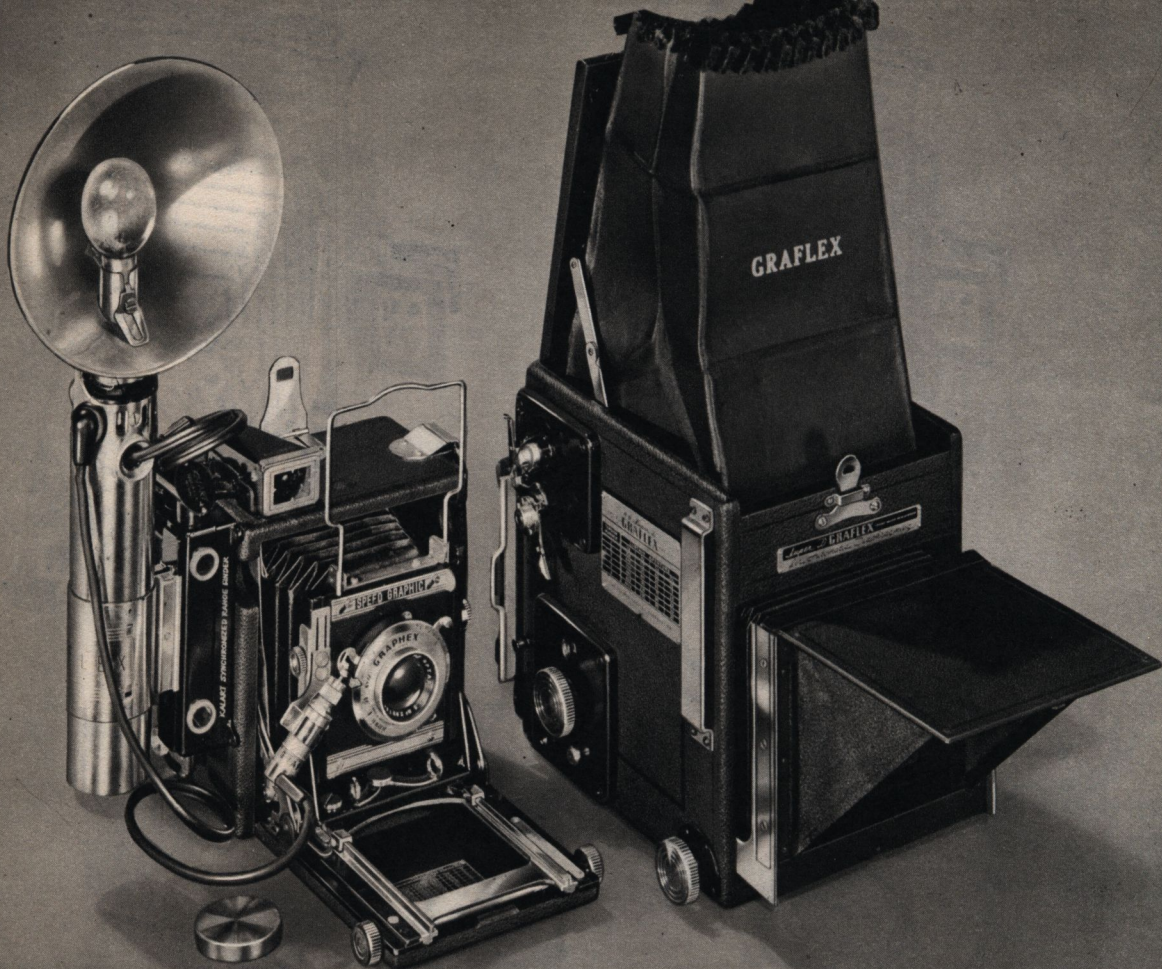
—Telephoto, Ektar 153 mm. f/4.5 lens only for above, NOT AVAILABLE

—Ground Glass Focusing Back for above camera, NOT AVAILABLE

—Magazine Back for Ektra above, NOT AVAILABLE

—Flash Synchronizer for Ektra cameras above, NOT AVAILABLE

—Leather Combination Case for Ektras. NOT AVAILABLE



Graflex and Speed Graphic Press Cameras,

MINIATURE $3\frac{1}{4} \times 4\frac{1}{4}$ SPEED GRAPHIC CAMERA. CMP-7 Form required—See Page 3. Ideal for personal or professional all-around day or night photography. Construction features include: Built-in focal plane back shutter—speeds from 1/10 to 1/1000 second and Time. Graphex between-the-lens shutter—speeds from 1 to 1/400 second, plus Time and Bulb. Ground glass focusing. With 5-in. (127mm) Ektar F/4.7 lens in No. 2 Graphex Shutter with built-in synchronization. Interchangeable. Removable lens board. Flash gun as pictured on camera above is not available at this time.

Advanced features: Dual-controlled rack and pinion focusing. Nine-inch bellows extension. Tubular finder with parallax adjustment, and wire frame sports finder. Vertical sliding front. Uses plates, pack, or cut film—gives album-size contact prints or salon-size enlargements. Compact size, only $5\frac{1}{2}$ by $4\frac{7}{8}$ by $3\frac{1}{2}$ in. Picture size $3\frac{1}{4} \times 4\frac{1}{4}$ in. Instructions for use included.

★67 CMN 254T—With 1 cut film holder. Postpaid. Same price Cash or Terms. \$147.00
 ★67 CMN 253T—Same as above, but with Kalart E-1 Range Finder. Installation charge included. Postpaid. Same price Cash or Terms. \$182.00
 Plus \$1.90 Fed. Tax; Total. 183.90

(See Page 10 for carrying cases and other accessories)

Use Wards Time Payment Plan

Wards Time Payment Plan is a convenient method of buying the photographic equipment you need now, and paying as you use. There is no carrying charge for the cameras described on this page. It's easy to establish your credit at Wards, if you are a responsible person regularly employed. See Page 3 for details on down and monthly payments, etc.

WARDS PAGE EIGHT

SUPER-D $3\frac{1}{4} \times 4\frac{1}{4}$ GRAFLEX. CMP-7 Form required—see Page 3. Produces vivid negatives for fine album-size contact prints . . . excellent for enlarging into salon-size pictures. Popular with both amateur and professional photographers because of its precision features and dependability.

Kodak $6\frac{1}{8}$ -inch, f/4.5 Anastigmat lenses in barrel mount. Interchangeable lens board. Focal plane shutter gives 24 shutter speeds from 1/10 to 1/1000 second; also Time exposures. Built-in shutter cable mounted on right side of camera. Graflex full-view ground glass focusing enables you to see your picture up to the instant you take it. Revolving back—a light-tight turntable to which film or plate accessory attaches by means of a metal slide. Turns easily to horizontal or vertical pattern. Folding hood. Film pack adapter included. (See Page 10 for other Graflex accessories.) Postpaid.

—Cash or Terms (No tax).. NOT AVAILABLE

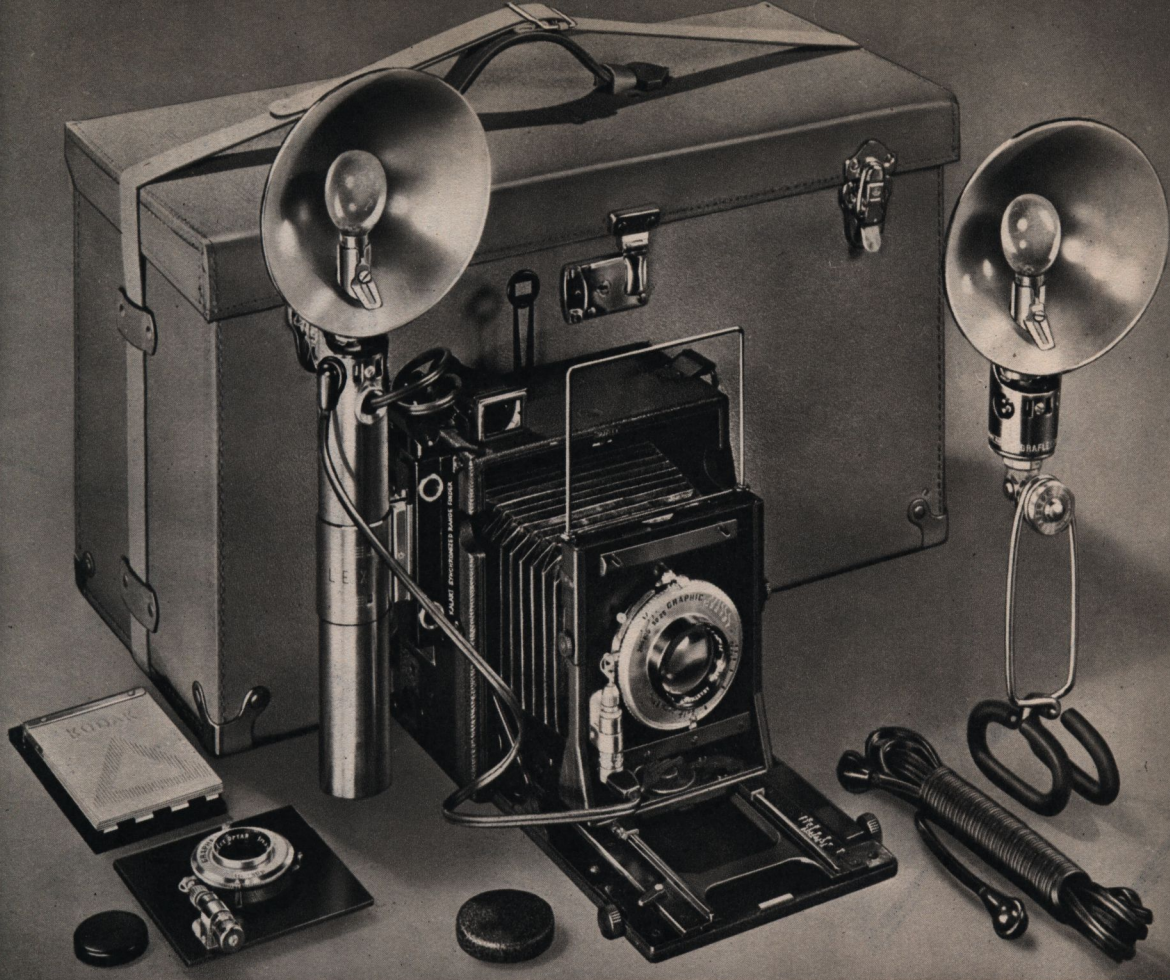
—Graflex No. 25F Flash Unit with sun reflector. Postpaid. For bayonet base lamps, NOT AVAILABLE

"T" MEANS SHIPPED FROM CERTAIN HOUSES ONLY

Some Photographic equipment described in this catalog is not carried in stock in all Ward Houses, but may be ordered from any House. These items are identified by the letter "T" at end of the Article Numbers. Order and allow postage from your nearest Ward Mail Order House. Also allow extra time for shipment.

NOTICE CONCERNING RESTRICTED MERCHANDISE

★Star before an Article Number identifies merchandise as restricted sale item requiring a CMP-7 Form for purchase; see Page 3. Shipped from Factory, due to wartime conditions. Allow extra time for shipment.



and Outfit... Choice of Experts

SPEED GRAPHIC OUTFIT. CMP-7 Form required—see Page 3. Complete outfit, same as supplied to the armed forces. Contains 1 each of the following items: 4x5-in. Anniversary Model Speed Graphic Camera with same general construction features as Miniature Speed Graphic described on opposite page, except with Kodak Ektar 127mm. $f/4.5$ lens; Kalart Model A Focuspot; Kalart Model E-1 Range Finder; No. 35 Graflex Synchronizer; Graflex Reflector; Optar 90mm. $f/6.8$ with Graphex shutter; No. 3 Solenoid fitted to above lens; 4x5 Graphic Cut Film Holder; No. 1 Crown Tripod; Graflex Extension Side Lighting Unit with 5-in. reflector; new style Case for Camera and accessories.

★67 CMN 268T—Complete Outfit. *Postpaid.* Cash or terms, \$334.05; plus \$17.93 Fed. Tax. Tot. \$351.98

KALART MODEL A FOCUSPOT. For use with Graflex Synchronizer. (Not pictured.)

★67 CMN 3203T—*Postpaid.* Cash or terms, \$13.50; plus \$1.60 Federal Excise Tax. Total.....\$15.10

KALART MODEL E-1 RANGE FINDER. For $2\frac{1}{4} \times 3\frac{1}{4}$ -in. and 4x5-in. Speed Graphics. Installation charge of \$3.00 included in price below.

★67 CMN 2157T—*Postpaid.* Cash or terms, \$35.00; plus \$1.90 Federal Excise Tax. Total.....\$36.90

USE WARDS CONVENIENT TIME PAYMENT PLAN

You may purchase Cameras, Enlargers, Photographic Supplies and Accessories on credit. Combine all your photographic needs into one Time Payment Order. It's easy to establish your Credit at Wards—see Page 3 for details.

No. 1 CROWN TRIPOD. (Pictured at right.) CMP-7 Form required—see Page 3. Made of oilsoaked and waterproofed selected cherry. Lightweight, easy to carry—folds compactly. Provides rigid support. Length closed, 16 in.; extended, 4 ft. 4 in. Top diameter, 4 in. (Other Tripods described on Page 29.)

★67 CMN 2115T—*Postpaid.* Cash or terms, \$11.25; plus 90c Federal Excise Tax. Total.....\$12.15

★CMP-7 Form required to purchase all accessories described below.

GRAFLEX No. 35 SYNCHRONIZER. With 5-in. reflector for bayonet-base lamps. Three-cell battery case for heavy duty and multiple-flash shooting. Batteries, camera bracket, solenoid release and connecting cord included.

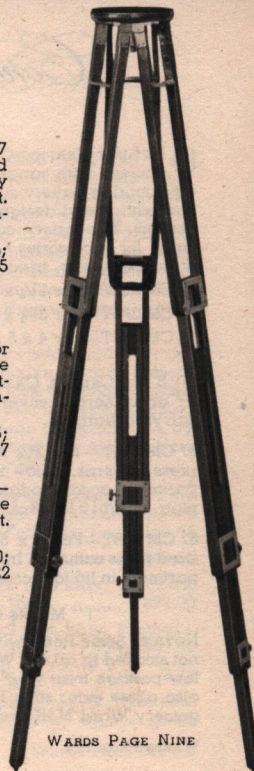
★67 CMN 3208T—*Postpaid.* Cash or terms, \$32.75; plus \$2.82 Federal Excise Tax. Total.....\$35.57

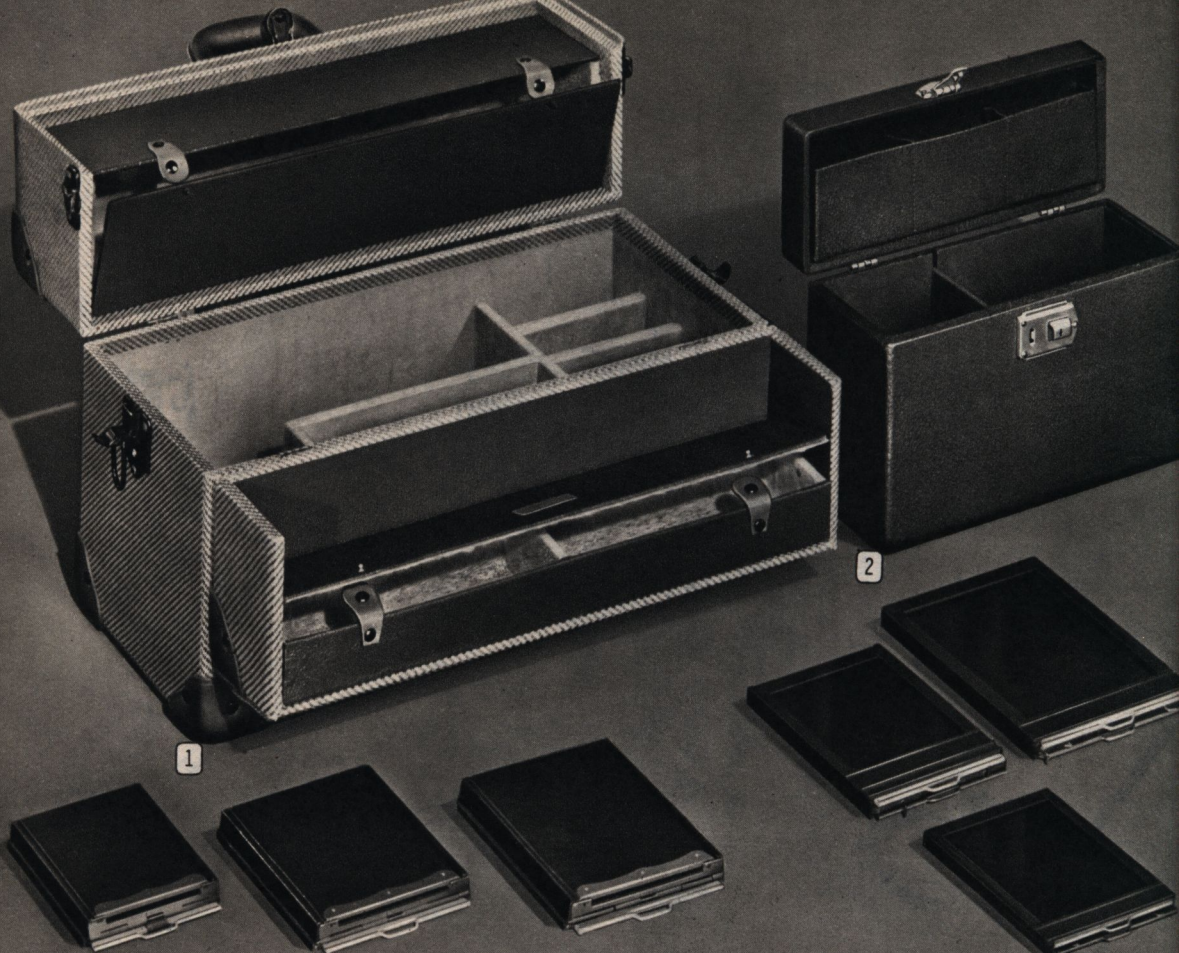
SIDE LIGHTING UNIT. For Graflex Synchronizer—complete with 5-in. reflector for bayonet base lamps. Flexible head with strong clamp on mount. 15 ft. of cord and connectors.

★67 CMN 3209T—*Postpaid.* Cash or terms, \$16.80; plus \$2.42 Fed. Excise Tax. Total.....\$19.22

VULCANOID COMBINATION CASE. (Pictured above.) Designed to carry 4x5 Speed Graphic Camera, plus accessories as listed in Speed Graphic Set at left. Size overall $19\frac{1}{2} \times 9\frac{1}{4}$ in. Olive gray finished vulcanized trunk fiber. Fitted with lock and key.

★67 CM 267T—*Postpaid.*.....\$13.50





Convenient Accessories for Press Cameras

① DE LUXE GRAPHIC CASES. Designed to hold Speed Graphic camera with range finder and any synchronizer without dismounting battery case from camera. Heavy wood construction with tweed design artificial leather covering. Reinforced corners. Two safety catches and lock. Two compartments in cover for accessories hold 2 dozen flash bulbs (5 dozen mid-gut bulbs), meter, tripod, filters, etc. *Postpaid.*

67 CM 269T—For $2\frac{1}{4} \times 3\frac{1}{4}$ Speed Graphic.....\$17.95

67 CM 270T—For $3\frac{1}{4} \times 4\frac{1}{4}$ Speed Graphic..... 18.85

67 CM 271T—For 4×5 Speed Graphic..... 18.85

② B & J CAMERA CASES. Wood construction. Black pebble-grain Keratol covering, complete with lock and key, and carrying handle.

67 CM 274T—For $2\frac{1}{4} \times 3\frac{1}{4}$ Watson Miniature or similar size press cameras. Inside measures $12\frac{1}{2}$ by 5 by $8\frac{1}{2}$ inches. Compartment accommodates camera and six film holders. Shipping weight 3 lbs. 8 oz.....\$5.65

67 CM 278T—For 4×5 B & J Press camera or other similar sized press cameras. Inside measures $14\frac{3}{4}$ by 5 by $9\frac{1}{2}$ in. Compartment in lid for accessories. Ship. wt. 4 lbs. 8 oz.....\$5.65

"T" MEANS ORDER MAY BE TRANSFERRED

NOTICE: Some items with suffix "T" after catalog number are not stocked in all the Ward Mail Order Houses. Order and allow postage from your nearest Ward Mail Order House, and also allow extra time for shipment. For complete list of Montgomery Ward Mail Order Houses, see Page 3.

WARDS PAGE TEN

GRAPHIC PRESS SHEET FILM HOLDERS. New Type 4—An improved design providing greater "lightproof" protection and more positive finger grip for removing from camera. Metal septum holds film flat. *Postpaid.*

★67 CM 251T—For $2\frac{1}{4} \times 3\frac{1}{4}$ \$3.20; plus 30c Fed. Tax. Tot..\$3.50

★67 CM 255T—For $3\frac{1}{4} \times 4\frac{1}{4}$ \$3.30; plus 31c Fed. Tax. Tot. . 3.61

★67 CM 261T—For 4×5 \$3.35; plus 31c Fed. Tax. Total. . 3.66

GRAPHIC ADAPTERS. Film pack adapters for Speed Graphic type cameras. For quick re-loading. Each holds one 12-exposure daylight-loading pack. *Postpaid.*

★67 CM 252T—For $2\frac{1}{4} \times 3\frac{1}{4}$ packs \$5.10; plus 40c Federal Excise Tax. Total.....\$5.50

★67 CM 262T—All metal construction for 4×5 film packs, \$7.20; plus 57c Federal Excise Tax. Total.....\$7.77

GRAFLEX HOLDER. For Graflex Super D, etc. *Postpaid.*

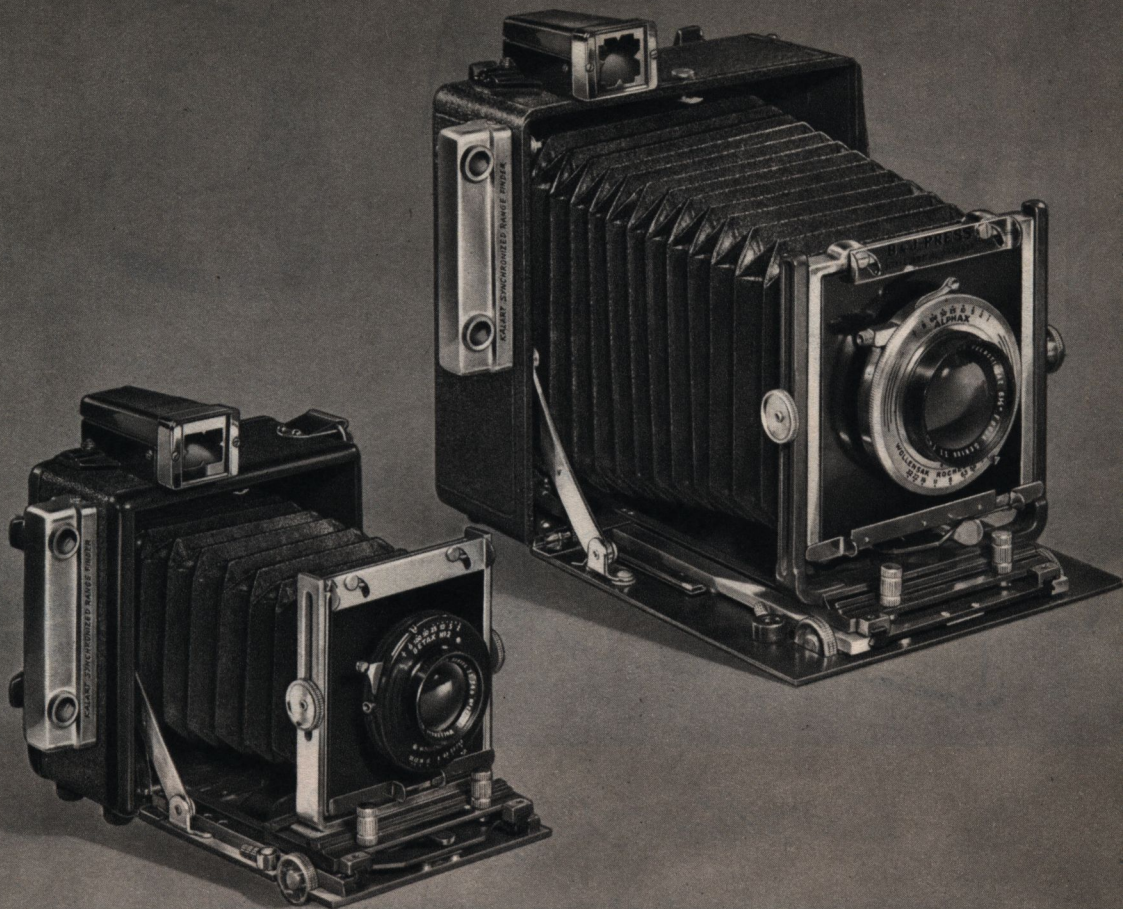
★67 CM 265T—For $3\frac{1}{4} \times 4\frac{1}{4}$ size sheet film \$4.20; plus 39c Federal Excise Tax. Total.....\$4.59

GRAFLEX ADAPTER. Film Pack adapter for Graflex Super D, etc. Holds standard 12-exposure packs. *Postpaid.*

★67 CM 263T—For $3\frac{1}{4}$ by $4\frac{1}{4}$ packs \$6.15; plus 49c Federal Excise Tax. Total.....\$6.64

GRAFLEX MAGAZINE. (Not shown). For Graflex Super D, etc.

★67 CM 264T—*Postpaid.* For 12 ea. $3\frac{1}{4}$ by $4\frac{1}{4}$ sheet film \$16.75; plus \$1.32 Federal Excise Tax. Total.....\$18.07



Watson, and Burke & James Press Cameras

WATSON 2 1/4 BY 3 1/4-INCH MINIATURE PRESS CAMERA. Form CMP-7 required—see Page 3. Speed and simplicity make this a most desirable Camera for many advanced amateurs and professionals. Features of press, view and portrait camera.

Wide angle drop bed and double extension bellows. Large 3 1/4 by 3 1/4-inch lensboard accommodates large lenses—different sizes can be interchanged instantly. Ground glass focusing panel with 4-sided hood. Tubular view finder shows sharp image; is fitted with compensating parallax adjustment.

Negatives 2 1/4 by 3 1/4 in. make good enlargements. Other features: Focusing track rides in self-aligning V-grooves, with focusing knobs on each side of bed; front adjustments for tilt, rise, fall, vertical shift; heavy leather carrying strap also steadies camera; reinforced tripod socket; rugged leather covered body; vernier-type focusing scale; black bellows. Accommodates all types of press camera accessories (listed below). Same Price for Cash or Monthly Payments.

★67 CMN 275T—Camera with 101mm. Wollensak f/4.5 lens; Rapax Shutter, 1/10 to 1/400-second; Kalart Model E-1 Rangefinder; Kalart Focuspot; Master Automatic flashgun; 1 film holder. Ship. wt. 6 lbs. 8 oz. \$159.50; plus \$13.20 Federal Excise Tax. Total you pay\$172.70

★67 CMN 272T—Camera without Lens. Shipping weight 6 lbs. \$44.55; plus \$4.05 Federal Excise Tax. Total.\$48.60

★67 CM 2222T—101 mm. Wollensak f/4.5 lens in Rapax Shutter. Postpaid. \$48.00; plus \$5.23 Fed. Excise Tax. Total.\$53.23

67 CM 273T—Film Holder. 2 1/4x3 1/4-in. size. Wt. 14 oz. 2.69

67 CM 274T—Case holds camera and 6 holders. Wt. 3 1/2 lbs. 5.65

BURKE & JAMES 4 BY 5-INCH PRESS CAMERA. Form CMP-7 required—see Page 3. Has the precision and mechanical features required by exacting workers for candid, pictorials, flash and action shots. Double extension bellows permits racking out to 14 inches—fine for big-image closeups and long focus lenses. The 20° bed drop makes close-up work easier. Tubular view finder, with parallax compensator, shows clear image, conveniently masked for horizontal and vertical composition. Revolving back. High tension retaining springs keep film holder light-tight.

Negatives 4 by 5 in.—ideal for contact prints and enlargements. Rigid bed with telescoping V-groove track for smooth focusing action; dual controls. Track lock anchors focusing adjustment. Accurately calibrated, vernier-type focusing scale. Has 3 1/2-in. side swing adjustment. Compact—7 1/4 by 8 3/8 by 3 1/2 in. closed. Metal body. Weighs only 4 1/2 lbs. Uses standard 4 by 5-inch film and accessories.

★67 CMN 279T—Camera with fast 6 3/8-in. Wollensak f/4.5 lens, Kalart Model E-1 Rangefinder, and 1 holder. Ship. wt. 9 lbs. Cash or Terms \$144.69; plus \$7.75 Fed. Tax. Total \$152.44

★67 CMN 276T—Camera (less lens). Wt. 7 lbs. 8 oz.\$48.95

★67 CM 2223T—6 3/8-in. Wollensak f/4.5 lens only. Postpaid. \$74.25; plus \$7.75 Federal Excise Tax. Total.\$82.00

★67 CM 2224T—6 1/2-in. Wollensak f/6.3 lens only. Postpaid. \$37.75; plus \$4.25 Federal Excise Tax. Total.\$42.00

67 CM 277T—Film Holder. Ship. wt. 1 lb. 2.79

67 CM 278T—Standard Carrying Case for B & J cameras above. Takes camera and 6 holders. Ship. wt. 4 1/2 lbs. ..\$5.65



More Satisfying Pictures with These

Visual Extinction Type Exposure Meters—Dependable; Low Priced

① LEUDI VISUAL EXTINCTION TYPE METER. Indicates strength of light subject reflects, through visual determination of point at which numbers become invisible. Standard Weston film ratings. For stills or movies; indoors or out. Direct exposure reading for any lensstop. Covers all standard film speeds, shutter speeds, lens stops. Complete, in case, with instructions for use. Small and compact—can be carried in vest pocket.
67 CM 2154—Ship. wt. 4 oz.\$1.98

② PIERCE VISUAL EXTINCTION TYPE METER. For use with still cameras only. Covers shutter speeds from 1/5 to 1/1000 second. Weston film speeds up to 200. Lens openings from f/1.4 to f/32. Recording chart is included in back of meter. Black plastic construction with neck cord attached. Small size makes it easy to carry in pocket. A useful, reliable meter within its proper range.
67 CM 2155T—Ship. wt. 4 oz.\$1.89

③ LUMAX COMPOSITION METER. Used as a Monotone filter to judge lighting and composition for black and white film. It enables you to see the picture as the film in your camera will "see" it. Can be used either vertically or horizontally. Has one filter for use with orthochromatic film and a second Green filter for use with panchromatic film. In Sun-tan rawhide case. Folds flat and thin—easy to carry in pocket.
67 CM 2156T—Ship. wt. 4 oz.49c

Photoelectric Type Exposure Meters—Nationally Known, Professional Quality

IMPORTANT: Before ordering any of the 3 Photoelectric Cell Exposure Meters described below, make sure that you are eligible to buy and have the required authorization—see Page 3 for complete information. Meters of this type are the most accurate, versatile and effective. A sensitive cell generates

electricity from light, according to its intensity, and records on a dial. A scale is provided to convert this reading into actual exposure time needed. Any meter below can be used for black and white or color film, movies or still shots, indoors or outdoors. Any meter can be purchased on Convenient Time Payments.

④ GENERAL ELECTRIC. Highly sensitive. Three uses: (a) to time photographic exposures; (b) in darkroom for printing and enlarging; (c) to check room lighting. Single sensitivity, 1/20 to 1700 ft. candles per sq. in. Diaphragm stops, f/1 to f/44; film speeds to 800 Weston; shutter speeds, 1/2500 to 100 seconds. With neck cord. G.E. book (included) explains all uses. Same price for cash or on Time Payments. Restricted—see above.
★67 CMN 2162T—Postpaid
\$22.25; Plus \$3.13 Fed. Tax. Total. \$25.38
LEATHER CASE FOR ABOVE. Postpaid.
67 CMN 2163T—(No Priority)\$1.35

⑤ DE JUR CRITIC. Model 40. A precision instrument. Patented louver restricts the meter's angle of acceptance so that extraneous light does not affect readings. Light sensitivity, .1 to 4000 foot candles. Film speeds, .3 to 800 Weston. Diaphragm stops from f/1 to f/32; shutter speeds, 1/2000 to 60 seconds. Zero adjusting screw. Full instructions and official Weston film speed ratings. Same price, cash or terms. Restricted—see above.
★67 CMN 2160T—Postpaid
\$18.75; plus 45c Fed. Tax. Total. \$19.20
BROWN LEATHER CASE. Postpaid.
67 CMN 2161T—(No Priority)\$1.75

⑥ DE JUR 5A. A sensitive, full-size, accurate photoelectric meter. Universal dial indicates correct exposure settings for all film. Light sensitivity, 1.5 to 1200 ft. candles. Twenty diaphragm stops from f/1 to f/32; film speeds, .3 to 200 Weston; shutter speeds, 1/1000 to 60 seconds. Zero adjusting set screw. Weighs only 3½ oz. Instructions and official Weston film ratings included. Same price cash or terms. Restricted—see above.
★67 CMN 2158T—Postpaid
\$13.75; plus 40c Fed. Tax. Total. \$14.15
TAN LEATHER CASE. Postpaid.
67 CMN 2159T—(No Priority)\$1.40



Aids to Correct Exposure

G.E. Manual . . . Seven Useful Kodaguides

- 7** TO **12** **KODAGUIDES**—VALUABLE POCKET SIZE PHOTO GUIDES. Prepared by Eastman Kodak Co. Will help you obtain the most from your camera and film. Each 3 by 4½ in. Seven titles:
- 7** "Eastman Film Kodaguide." Information on film speeds, meter settings, code notches, color readings and filter factors for 35 mm., Bantam roll, pack and professional sheet film.
- 8** "Kodak Home Lighting Guide." Dial calculator for Super-XX film under home lighting for still or movie shots.
- 9** "Kodak Indoor Guide for Black and White Films." Dial calculator for Verichrome, Panatomic-X, and Super-XX roll films and packs. Proper exposures with photoflood and flash lamps.
- 10** "Outdoor Kodaguide for Kodak Films." Dial Exposure calculator for Verichrome, Panatomic-X, Plus-X and Super-XX roll films; 35 mm., Bantam and film packs. Data on lens openings, etc.
- 11** "Kodachrome Outdoor Guide." Calculators tell how to expose for 35 mm. and Bantam under various daylight conditions.
- 12** "Kodachrome Indoor Guide." Calculators tell how to expose for 35 mm. and Bantam under artificial light.
- "Kodacolor Exposure Guide." (Not pictured.) Dial calculator for Eastman's Kodacolor roll film. All Kodaguides Postpaid.
67 CM 2152—State Titles wanted. Each . . . 10c; Any 6 for . . . 54c
- 13** **G.E. EXPOSURE METER MANUAL.** Explains controlled exposure, determination of film speeds, interpretation of exposure meter readings and other points. Size 8½ by 6 in.
67 CM 2153—100 pages. Postpaid . . . \$1.00
- 14** **EXPOSURE COMPUTER.** Designed for Army and Navy. For ground or aerial photography. Covers a wide light range.
67 CM 2151T—Simple to use. Size 3¼ by 5 in. Postpaid . . . 89c

IMPORTANT NOTICE. Photographic film for civilians is drastically limited. We reserve the right to reduce or refuse excessive orders. Film not in this catalog available to Wards will be sold in Retail stores.

Film

Eastman Kodachrome Color Films

(See Important Notice on Film, at left below.)

- 15** **16** For color transparencies, to be used in viewer or projector. (Can also be used for color prints—see Page 40 of this catalog for details.) Prices include processing and return postage. Important: send film for processing to manufacturer.
- 15** **828 BANTAM FILM.** Eight exposures on roll.
For OUTDOOR PICTURES. Mailed Postpaid.
67 CM 1542—Price per roll \$1.45; plus 4c Federal Excise Tax. Total you pay . . . \$1.49
For INDOOR USE. (Type A). Mailed Postpaid.
67 CM 1548—Price per roll \$1.45; plus 4c Federal Excise Tax. Total you pay . . . \$1.49
- 16** **35 mm. KODACHROME FILM.** For all 35 mm. cameras. Daylight loading spools. Eighteen exposures.
For OUTDOOR PICTURES. Mailed Postpaid.
67 CM 1552—Price per roll \$2.68; plus 8c Federal Excise Tax. Total you pay . . . \$2.76
For INDOOR USE. (Type A) Mailed Postpaid.
67 CM 1553—Price per roll \$2.68; plus 8c Federal Excise Tax. Total you pay . . . \$2.76

Ansco Twin 8 Hypan 8 mm. Movie Film

(See Important Notice on Film, at left below.)

- 17** **Twin Eight film** for black and white pictures. For reel loading cameras only. Each reel holds 25 feet of double eight film, making 50 feet of 8 mm. film for projection. Film mailed Postpaid. Price includes cost of processing and return postage. Important: send film for processing to Manufacturer—DO NOT send to Wards.
67 CM 1802—Price per roll \$2.40; plus 7c Federal Excise Tax. Total you pay . . . \$2.47



Wardway Complete, Convenient Photo

Which Finishing Service Shall I Use?

Wards offer two photo finishing services—Standard and Custom—created to meet the varied requirements of every photographer from average snap-shot picture takers to highly advanced amateurs.

For the average person who wants good, clear album prints and enlargements, Standard Service can be used. This service can be compared to that offered by local stores and photo shops. It gives you good work without extreme attention to details given to Custom work. Negatives and prints are processed at high speed in standard formulas. Standard Service will give you satisfactory work at the lowest possible cost.

Custom Service is a Wardway feature originated to meet the demand for personalized processing which would be the finest available anywhere. Custom negatives are handled, literally, with gloves on. They are scratch-free, fine grain developed, and have fullest gradation of tone consistent with the exposure of negative. Prints are sharp; enlargements are Salon quality. All prints and enlargements are made on expensive paper with handsome die-sunk borders.

Throughout the processing of a Custom order the utmost personal attention is paid to every detail that will produce the best possible result. If you desire made-to-order finishing of your roll, pack or cut film—or quality enlargements made from negatives you already have in your files—order Custom Service. See Price and Ordering information on opposite page.

Wardway Standard Finishing Service

Fine grain developing. Good quality prints, reprints and enlargements. Prints are special oversize. You get one deckled print for each good exposure. Also, for any exposure not printed, you receive a coupon good for one standard size print. "Split-exposure Rolls," listed below, means any regular 8-exposure roll upon which 12 or 16 exposures can be made.

ROLL FILMS—prices for developing and printing 6 or 8-exp. rolls.
120 or 620 rolls printed in big $3\frac{1}{2}$ x 5-inch size.30c
116 or 616 rolls printed in big $3\frac{1}{2}$ x $5\frac{3}{4}$ -inch size.30c
127 or 828 rolls printed in big $3\frac{1}{4}$ x $4\frac{1}{2}$ -inch size.30c
All larger negatives printed in $3\frac{1}{2}$ x $5\frac{3}{4}$ -inch size.30c

CANDID SPECIALS—"Split-exposure" or 35 mm. roll film.
Any "split-exposure" roll with 12 exposures.50c
Any "split-exposure" roll with 16 exposures, or any 18-exposure 35 mm. film.60c
Any 36-exposure 35 mm. film.1.25

COPY NEGATIVES—One negative from any size print.50c

STANDARD REPRINTS—(in same sizes as above) from any good negative. Minimum order 5 prints. Each print.4c

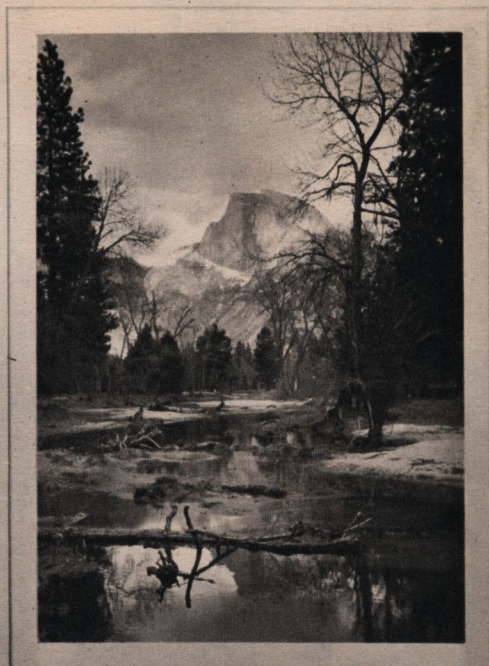
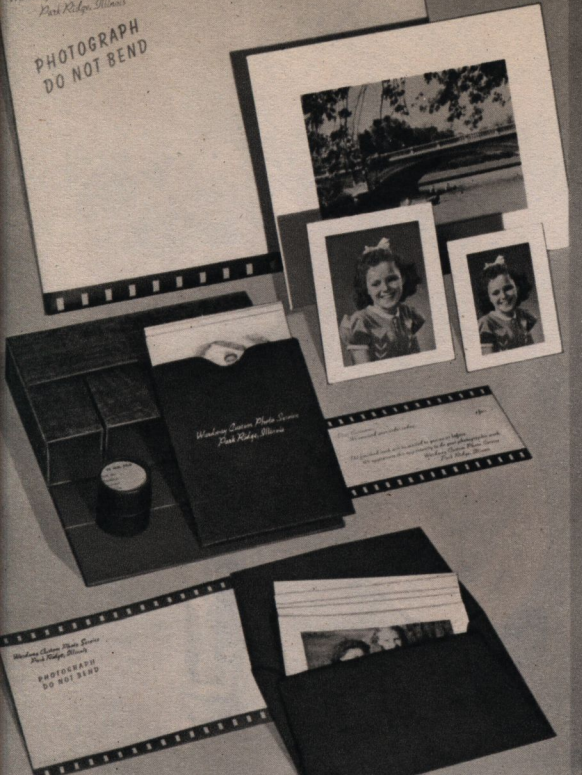
STANDARD ENLARGEMENTS. Double weight semi-matte. *State Size.*
Narrow Margin— 5x 7-in. size. Each.20c; 6 for.75c
8x10-in. size. Each.40c; 6 for.1.50
11x14-in. size. Each.50c; 6 for.2.00

Embossed—5x 7-in. on 8 x10-in. paper. Each. .40c; 6 for. .1.50
8x10-in. on 11x14-in. paper. Each. .50c; 6 for. . 2.00

INSTRUCTIONS FOR MAILING TO WARDWAY. With film from Wards is a price list; mailing bag (for which $1\frac{1}{2}$ c postage is required); and instructions. If you do not have mailing bag, address films (or negatives) with money, stating kind of service wanted, to Wardway Photo Service, Park Ridge, Ill. Do not send film to Wards Mail Order or Retail Branches. Allow about 12 days for service.

West Coast fans send film and negatives to Wardway Photo Service, Los Angeles, California, Box 25. Be sure to state on your order the kind of service wanted—Standard or Custom. Allow about 12 days for service.





Finishing Service in Two Qualities

Wardway Finest Custom Finishing Service for Outstanding Pictures

Wardway Custom Photo Finishing—the De Luxe Service that is pleasing so many discriminating picture takers. Wardway Custom Service was designed to meet the particular demands of advanced amateur photographers who want the finest possible processing regardless of price; yet the cost of this high quality, made-to-order service is only a little more than ordinary standard finishing. And it's worth it.

Pictured at left above are examples of prints and enlargements together with the distinctive mailing folders, print and negative envelopes and containers in which work is returned to you. This wrapping and container material gives extra protection—adds a distinctive appearance to your order.

CUSTOM PROCESSING is not "assembly-line" work. It is a personalized operation done by a select group of workers, trained in modern finishing techniques. Many have been with Wardway for years, and have attained high degrees of skill. They use only the best materials. Their job is to utilize all of their skill in bringing out the best your camera produces.

CUSTOM NEGATIVES are given individual attention through every step of processing. Ultra fine grain developers capture maximum gradation, keep emulsion graininess at a minimum so that projection prints from negatives will be sharp and of good quality; extra hard acid fixing baths protect film from scratches; longer washing gives greater permanence of image, completely removes foreign surface deposits.

CUSTOM PRINTS—on oversize semi-matte double weight paper—are made on modern projection printers, automatically regulated to split-second accuracy by photo electric cell control. Electric drying; spotting under ultra violet rays, etc., give your work a quality appearance you'll be enthusiastic about.

CUSTOM ENLARGING is a science in itself at Wardway. Test prints are made, accepted if satisfactory, or discarded and done over until a suitable print emerges from the developer tray. No effort is spared in bringing out the best that's in the negative. Spotprinting, dodging, cropping and other methods are used whenever it will improve the final result. Prices and ordering information at right.

ROLL FILMS—prices for developing and printing 6 or 8-exp. rolls. 120, 620 rolls—printed in 2½ by 3½-in. picture size die sunk on 3½ by 4½-in. size semi-matte finish paper . . . 75c
116, 616 rolls—printed in 2½ by 4½-in. picture size die sunk on 3½ by 5½-in. size semi-matte finish paper . . . 75c
Any other 8-exp. Roll and 8 De Luxe Prints . . . 75c

CANDID SPECIALS—price for developing and printing any "split-exposure" or 35 mm. roll film used by miniature camera owners. Any "split-exposure" roll with 12 exposures—printed in 3 by 3-in. size die sunk on 4 by 4-in. semi-matte finish paper . . . \$1.15

Any "split exposure" roll with 16 exposures, or any 35 mm. film with 18 exposures—printed in 3 by 4-in. size die sunk on 4 by 5-in. semi-matte finish paper . . . \$1.50

Any 35 mm. film with 36 exposures—printed in 3 by 4-in. size die sunk on 4 by 5-in. semi-matte finish paper . . . \$2.75

CUSTOM REPRINTS—(sizes as above) for fresh prints from any good negative—mounted on oversize, fine quality paper. Each print . . . 10c

DEVELOPING ONLY—ultra fine grain. For the person who wants sparkling negatives from which to make his own prints.

Roll film all sizes . . . 50c per roll
35 mm.—18 to 36 exposures . . . 75c per roll
Packs and cut film all sizes . . . \$1.25 per doz. or 15c each

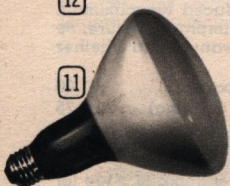
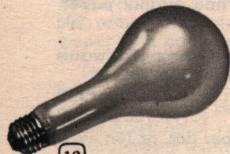
CUSTOM ENLARGEMENTS—carefully produced for maximum quality. Cropped where necessary to improve picture. Be sure to state on order size enlargement wanted and whether you want it hand colored.

5 x 7 enlargements die sunk on 8 x 10 paper . . . \$1.00
Hand colored in oils (Enlargement and Coloring) . . . 1.75
8 x 10 enlargement die sunk on 11 x 14 paper . . . 1.75
Hand colored in oils (Enlargement and Coloring) . . . 2.75

INSTRUCTIONS FOR MAILING. See bottom of opposite page for complete instructions and information for mailing film.



You Can Always Have Proper



1 KALART AUTOMATIC SPEEDFLASH UNIT. CMP-7 Form required—see Page 3. Precision-built—positive synchronization. Paraplanatic chrome plated adjustable reflector. Fits most cameras with setting-type Supermatic, Kodamatic, Diomatic and Compur between-the-lens shutters, and miniature focal plane shutters. Tenite battery case. Bulb socket with ejector. Armored metal cable release. Batteries, instructions. (No bulb.) For Leica or Contax add 75c. Postpaid. Same price Cash or Terms.
★67 CMN 3202T—State name, make, model of camera. \$16.95; plus \$1.40 Fed. Excise Tax. Tot. . \$18.35

2 ABBEY 3X PRESS FLASH GUN. CMP-7 Form required—see Page 3. Pre-synchronized. No adjusting. Magnetic tripper stays on lens board when camera is not in use. Chrome plated brass. Batteries included. No bulb. For 2¼x3¼, 3¼x4¼, 4x5 or 5x7-in. cameras. Same price Cash or Terms.
★67 CMN 3207T—Postpaid. State size, name, model of camera. \$25.00; plus \$2.85 Tax. Total.....\$27.85

GE Mazda Photoflood Lamps

11 12 For the best pictures indoors at night. Use in any standard electric outlet. Frosted inside. For 110-120-volt A.C. or D.C. Postpaid.

11 No. R2 REFLECTOR BULB. 1500-W. Life abt. 6 hrs. 67 CM 3103—Ea. 85c; plus 6c Tax. Total....91c

12 No. 2. SIZE. 500-W. Light equivalent to 1500-W with ordinary lamp. Life about 6 hours. 67 CM 3102—Ea. 30c; plus 2c Tax. Total.....32c

No. 1 SIZE. 250 watts. Life about 2 hours. 67 CM 3101—Ea. 15c; plus 1c Tax. Total.....16c

SALE OF PHOTOFLASH BULBS RESTRICTED

Sale of Photoflash Bulbs listed at right is limited to 1 carton of 8 or 6, as listed, per customer.

3 COMPAK SPEEDFLASH. Synchronizes up to 1/50 second through cable release socket. Adaptable to all cameras with self-setting shutters. Dependable synchronizer unit. Easy to operate, no adjustments necessary. Uses low-cost bayonet base bulbs. Throws out light evenly. With Test lamp, polished reflector, extension bracket, batteries and instructions. Bulb not included.
67 CM 3201T—Ship. wt. 1 lb.....\$6.65

4 VICTOR JUNIOR HAND FLASH. A less expensive type of holder for open flash photography. Holder with 6½-inch diameter reflector, 3¼ inches deep. Reflector has frosted finish inside and out. Uses two standard flashlight cell batteries. Batteries and lamps are not included. Ship. wt. 1 lb. 67 CM 3200T—Each \$1.30; plus 9c Federal Excise Tax. Total you pay.....\$1.39

Buy Your Camera Needs on Wards Time Payment Plan. See Page 3 for complete information.

GE Mazda Photoflash—Postpaid

13 Standard base. For any current, 1½-V. and up. No. 11. 4 in. Foil-filled. Abt. 22,000 lumen-sec. 67 CM 3106—8 for \$1.04; plus 7c Tax. Total...\$1.11

No. 22. 5½ in. Wire-filled. Abt. 65,000 lumen-sec. 67 CM 3107—6 for 90c; plus 6c Tax. Total.....96c

14 PRESS FLASHES. 2½ in. Bayonet base. For battery. Wire-filled. Use adapter below.

No. 5. About 19,000 lumen-seconds. 67 CM 3104—8 for \$1.04; Plus 7c Tax. Total...\$1.11

No. 5B. For day color film. Abt. 7,000 lumen-sec. 67 CM 3105—8 for \$1.28; Plus 9c Tax. Total...\$1.37

15 ADAPTER SOCKET. 2½-in. For No. 5, 5B bulbs. 67 CM 3204—Ejector incl. Ship. wt. 4 oz....59c



Photo Lighting with this Equipment

[5] KODAK HANDY REFLECTOR. Simple but efficient reflector—can be used on floor lamps or other home lighting fixture—replaces regular shade with reflector. Help conserve light that would ordinarily be lost. Made of durable card stock. For use with standard electrical sockets. Suitable for either Photoflood or Photoflash bulbs. Complete exposure tables are printed on each Reflector. (Socket, cord and bulb in picture not included.) Ship. wt. per pair, 6 oz.

[6] BASIC LIGHT. Clamp-on type. For flat shadowless lighting. Ideal for background lighting. Satin aluminum bronze inside surface. Rubber covered spring clamps. Heat resisting sockets; 2-foot cord with plug. Uses No. 1 photoflood bulbs. Diameter 9½ in.; depth 4 in. Bulb not included. 67 CM 3225T—Ship. wt. 2 lbs. 4 oz. \$3.39; plus 21c Federal Excise Tax. Total you pay....\$3.60

[7] ACADEMY SPOTLIGHT. A true "Baby Spot" that will add immeasurably to the snap and brilliance of your photographic work. Supplement your regular light equipment with this Spotlight—it will help you get many special effects. Adapts itself to a wide variety of lighting demands. Use it for table-tops, still-lives, portraits, etc. Black crinkle finish metal. Good ventilation. Use with base or on tripod or photo lampstand. Has 3-inch Fresnel Lens with slots for diffusion disk or filters. Handy lever changes spot to flood light. Can be used with 100, 150 or 200-watt bulb depending on intensity of light desired. (150-watt bulb included.) With cord and switch. 67 CM 3226T—Ship. wt. 2 lbs. 8 oz. \$9.95; plus 40c Federal Tax. Total you pay.....\$10.35

"T" after Catalog No. means order may be transferred for shipment. Allow for extra time. Send order to, allow postage from nearest Ward House.

[8] 9] PHOTOFLOOD REFLECTORS. Clamp-on type. Scientifically designed for even light distribution. Satin aluminum bronze inside surface for best reflection. Rubber covered spring clamps. Heat resisting porcelain sockets. Two-foot cords with plugs. Bulbs not included.

[8] For smaller size No. 1 photoflood bulbs only. Diameter about 10½ in.; depth 5¼ in. No switch. Ship. wt. 2 lbs. 2 oz. 67 CM 3223—Ea. \$2.19; plus 14c Tax. Total...\$2.33

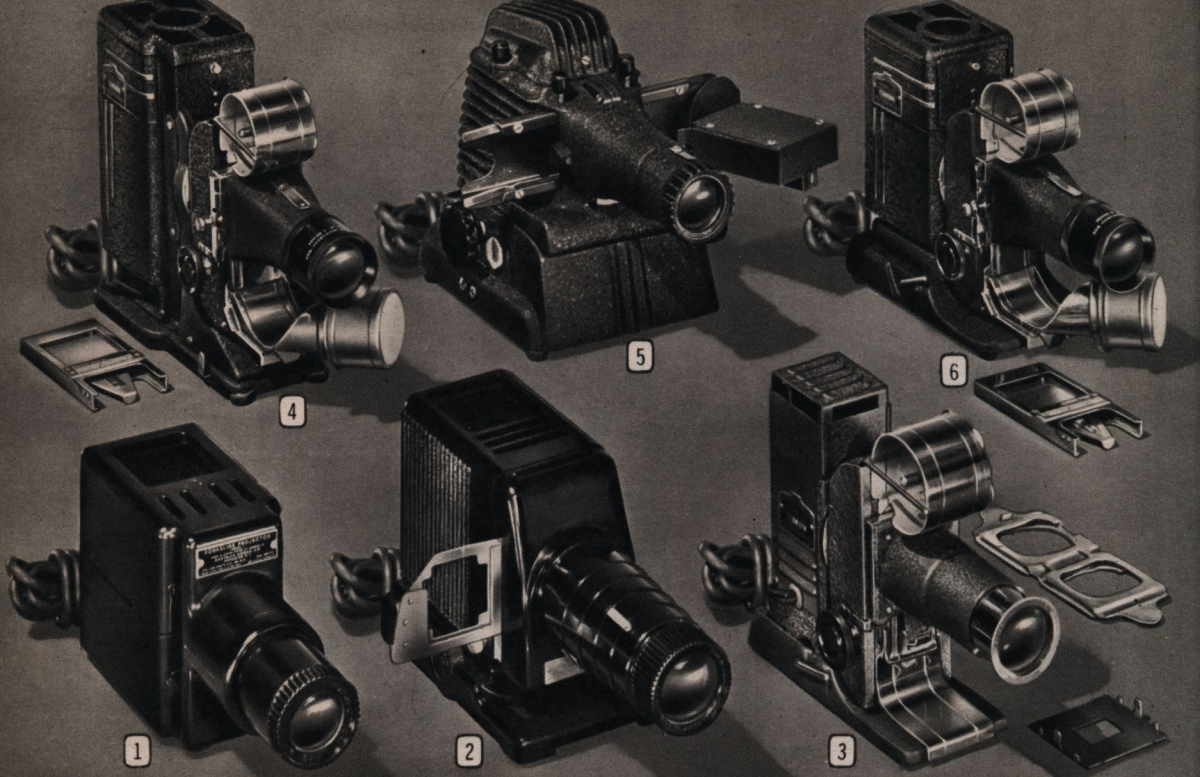
[9] For No. 2 Photoflood. Large—diam. 10½ in.; depth 7¼ in. Long shank—use with No. 2 photoflood bulbs. Feed-through switch. Wt. 3 lbs. 67 CM 3224—Ea. \$2.79; plus 18c Tax. Total...\$2.97

[10] LIGHTING STAND. Designed to help you achieve professional lighting effects with average amateur equipment. Portability and height control of this stand make it ideal for portrait work. (See diagrammatic views showing takedown and use with lights.) Made of tubular steel. Has braced tripod legs with non-skid rubber tipped feet. Folded height about 4 ft. Extension rod brings it up to about 7½ ft. The 19-inch crossbeam is detachable; holds two or more clamp-on reflectors. Beam swings easily for changing direction of light. 67 CM 3227—Ship. wt. 8 lbs. 8 oz.....\$2.98

Photoflood Pictures

The use of properly placed reflectors with photoflood bulbs makes possible unlimited indoor pictures with ordinary movie or still cameras using faster films. Various typical arrangements are shown in the small insets at right. The average life of a bulb ranges from 2 to 6 hours.





Slide Projectors, Viewers, Files

IMPORTANT: CMP-7 FORM REQUIRED FOR ALL PROJECTORS
—see Page 3. All show Kodachrome, S.V.E. and Disney (Page 2)

and 2 by 2-in. glass slides. Instructions. For 110 to 120-V. If not
Postpaid allow postage from nearest Ward House.

1 KODASLIDE MODEL I. Lens $f/3.7$; focal length 4 inches. Insulated lamp house. 100-watt lamp. Tilting device. Feed slot—use with or without slide carrier. *Postpaid.*

★67 CMN 354T—Cash or Terms...\$18.50
67 CMN 355T—SLIDE CARRIER... 1.75

4 S.V.E. MODEL AAA. Anastigmat $f/3.6$ lens; focal length, 5 in. Heat-absorbing filter. 300-watt lamp. Semi-automatic vertical slide changer—light out for change. For slides or film strips—single or double frame. Leatherette case. Ship. wt. 9 lbs.

★67 CMN 358T—Cash or Terms...\$62.95

2 KODASLIDE 2A. Lens $f/3.5$; focal length 5 inches. Spherical reflector. Three condenser lenses. 150-watt lamp. Slide carrier. *Postpaid.*

★67 CMN 351T—Cash or Terms...\$36.50
★67 CMN 353T—AUTOMATIC SLIDE CHANGE for Model 2A or Model 1...\$12.00
67 CMN 352T—LEATHER CASE.... 8.00

5 GOLDE MANUMATIC. Lens $f/3.5$; focal lgth. 5 in. Blower cooled. Stack holds 20 mounted to 50 unmounted, after viewing. Slide carrier. Auto. frame centering. Tilts. 300-w. lamp. Ship. wt. 12 lbs.

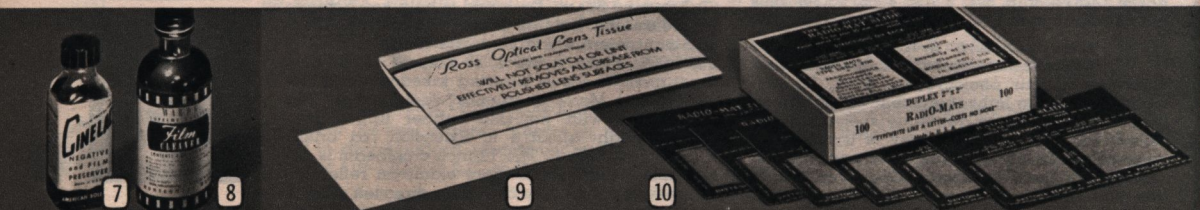
★67 CMN 360T—Cash or Terms...\$49.95
67 CMN 361T—CASE. Wt. 4 lbs. . 5.39

3 S.V.E. TRI-PURPOSE MODEL CC. Extra feature — takes 35mm. roll film. Lens $f/3.6$; focal length 5 in. Heat-absorbing filter. 100-watt lamp. Framing, tilting device. Two condenser lenses. Leatherette case. Shipping weight 6 pounds 4 ounces.

NOT AVAILABLE

6 S.V.E. MODEL AK. Anastigmat $f/3.6$ lens with 5-in. focal length. 300-watt lamp. Convenient semi-automatic vertical slide changer. A truly fine projector. Finished in Black and chromium plating. Leatherette case included. Ship. wt. 9 lbs.

★67 CMN 357T—Cash or Terms...\$49.95



7 CINELAC FILM PRESERVER. For all types film. Toughens; seals in moisture; prevents marring. Instructions. 67 CM 1213—*Postpaid.* 2 oz. for... 98c

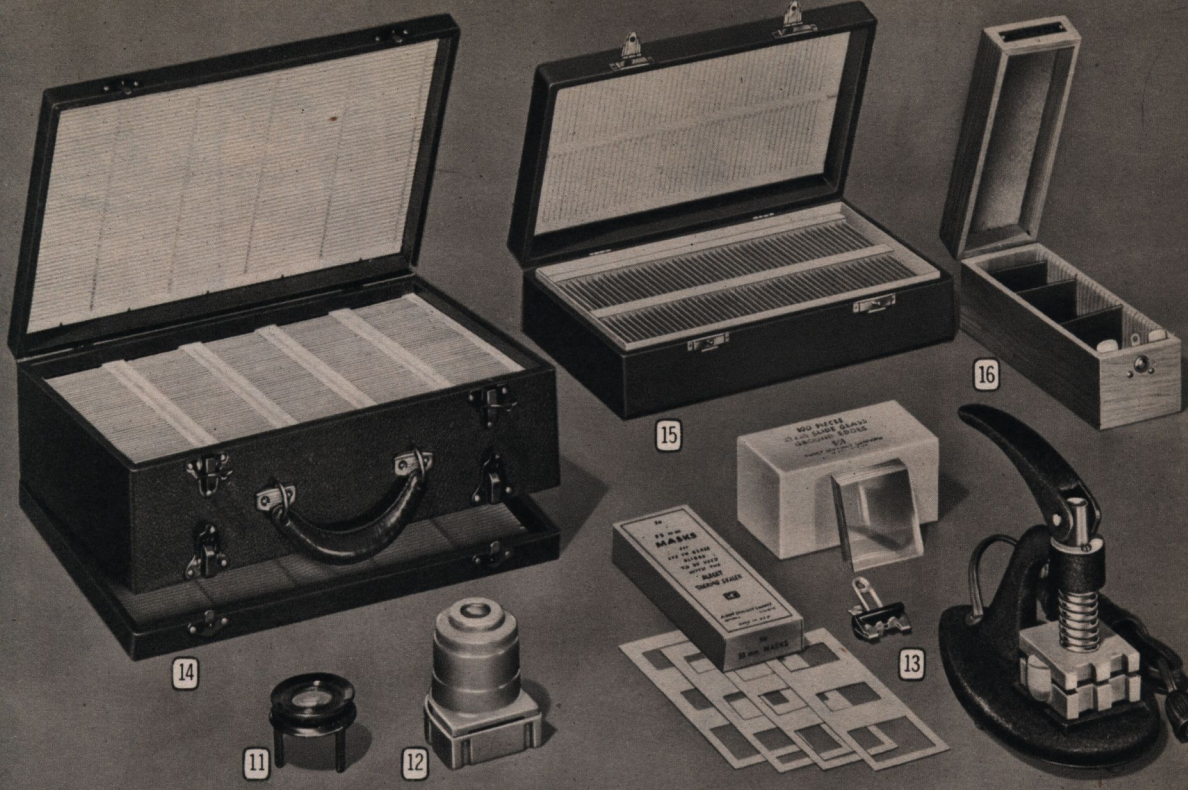
8 FILM CLEANER. For color or B. and W. film. Won't harm image. Removes dirt, finger prints. Instructions. 67 CM 1212—*Postpaid.* 4 oz. for... 89c

9 LENS AND SLIDE TISSUE. Effectively removes any grease or dust particles from polished surfaces. Lintless—will not scratch. Choice of two sizes. Ship. wts.: 3 oz.; 5 oz.

67 CM 3317—*Slide size wanted.*
Standard 3 by 5 in. 100 sheets... 32c
Economy 4 1/4 by 5 in. 300 sheets... 89c

10 MESSAGE SLIDES. "Radio Mat." Saves time; gives neat 2 by 2-in. slides. Prepare with typewriter or pencil. Then just remove carbon and back of mat, and slip cellophane sheet into position with mat and mount between glass. With either plain or amber cellophane. In box of 100 only. *Postpaid.*

67 CM 3316T—*Slide color.* Per box...\$2.00



and Other Handy 35 mm. Accessories

11 MAGNIFYING LENS. A $7\frac{1}{2}$ -power, dual-lens magnifier that is ideal for close examination of prints, negatives, slides, etc. A convenient accessory for which you will find many uses.

67 CM 7826—Ship. wt. 4 oz. 98c

14 LARGE 2-COMPARTMENT SLIDE FILE. Enables you to keep a large number of slides, in orderly arrangement, in a single, easily carried case. Opens on both sides—one at a time. Capacity, 500 of the 2 by 2-in. glass slides or 1000 Kodachrome Ready Mounts. Sturdy wood construction, covered with durable artificial leather. Snap locks on each of hinged lids so that either stays securely shut while other side is open. Carrying handle, securely attached.

67 CM 3303T—Ship. wt. 4 lbs. \$8.98

12 HOLLYWOOD VIEWER. For 35mm. or Bantam ready-mounts. Optical eye-piece gives about 2 diameters magnification. Not electric—point toward light source to use.

67 CM 3302—Ship. wt. 6 oz. \$1.98

15 SLIDE FILE BOXES IN 2 SIZES. Good quality wood construction box covered with durable fabricoid. Keeps 2 by 2-inch glass mounted slides in orderly arrangement for showing and gives them added protection from dirt, breakage, etc. Index for filling in, is in the lid. Offered in two convenient sizes.

67 CM 3304—Holds 100 slides.

Shipping weight 1 lb. 9 oz. \$1.59

67 CM 3305—Holds 207 slides.

Shipping weight 3 lbs. 8 oz. \$2.95

13 ALBERT THERMO SEALER. For 35mm. or Bantam transparencies. Seals transparencies permanently in moistureproof enclosure between 2 glass slides. No tape, frames or forms needed. 110 to 120 volts. With 50 masks; 100 slides; holding clip.

67 CM 3311T—Postpaid \$9.95

50 Thermo Masks. 2 by 2 inches.

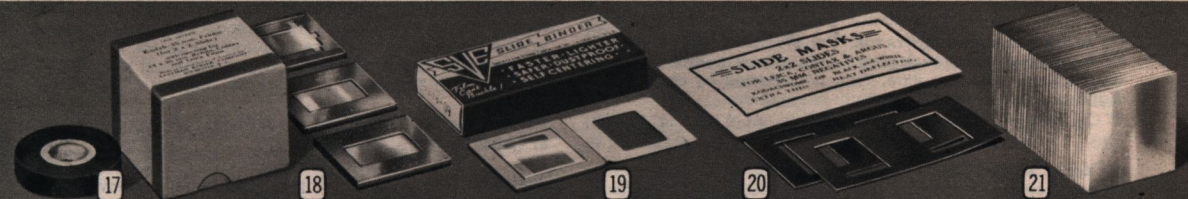
67 CM 3312T—Postpaid 69c

100 Pieces of 2 by 2-in. Glass.

67 CM 3313T—Postpaid \$1.29

16 KODASLIDE SEQUENCE FILE. Keeps slides handy, protected, in order. Natural finish beechwood box. Capacity: 45 of the 2 by 2-in. glass slides or 125 Kodaslide. Dividers. Button lock.

67 CM 3315—Postpaid \$1.98



17 KODAK BINDING TAPE. To make 2 by 2-in. or Bantam slides. Width $\frac{3}{8}$ in. 67 CM 3314—Postpaid. 10-yd. roll. . . 20c

18 METAL 35MM. FRAMES. For Kodachrome transparencies. Double mask and 2 glasses supported between interlocking halves of metal frame.

67 CM 3310—Postpaid. Box of 12. . . \$1.45

19 S.V.E. SLIDE BINDER KIT. For all 35mm. transparencies; makes 2 by 2-in. glass slides. Protects them. Fiber cushion frame centers film and glass. Dustproof. Safer, more convenient than ordinary mounts. Kit contains 12 binders and 24 glasses—makes 12 slides. With instructions.

67 CM 3309—Kit, Postpaid 45c

20 SLIDE MASKS AND GLASSES. Make 2 by 2-in. slides. Protect transparencies; easier to store and project.

21 MASKS. Heavy gold color paper.

67 CM 3307T—Wt. 2 oz. 50 for. . . 35c

21 GLASS SLIDES. Clear. Standard wt.

Box of 100 (for 50 slides).

67 CM 3306T—Ship. wt. 1 lb. 4 oz. 65c



Get Finer Results and Save Time with

[1] FEDCO DEVELOPING TANK. Here's a universal-type Tank that develops all 35mm. film, and any standard size roll film up to $2\frac{1}{2}$ by $4\frac{1}{4}$ inches. Facilitates uniform, fine quality developing. Made of tough chemical-resisting Bakelite. Lock-on, light-tight top has recessed funnel for pouring solutions in or out of tank. Agitator rod fits through top of tank—interchanges with thermometer to permit checking temperature of developer. Reel has beveled edges for easy loading in the dark. Tank holds 26 oz. of solution when loaded. Complete instructions included.

67 CM 4902—Ship. wt. 1 lb. \$2.69; plus 19c Tax. Total...\$2.88

[2] ALBERT ELECTRIC AGITATOR. For standard roll film and many cut film developing tanks. Gives non-directional developing—shortens time. Tray not affected by chemicals. Agitator speed controlled by built-in regulator.

67 CM 4933T—For any A.C. or D.C. Ship. wt. 4 lbs.\$5.69

[3] KODAK SECOND TIMER. CMP-7 Form required. Equipped with large second hand and minute indicator. Lever at bottom of face starts and stops second hand. Swivel mounted on base. Use for timing studio shots, enlarging exposures.

★67 CM 4929T—Postpaid.....\$5.20

[4] KAYE X-RAY DEVELOPING TANK. Durable, yet lightweight—easy to empty. Accommodates all sizes of film up to 5x7-inch. Has sturdy cover. Size: Length $7\frac{1}{2}$ in.; height $9\frac{1}{2}$ in.; width 7 in. Holds $\frac{1}{2}$ gallon of solution.

67 CM 4935T—Postpaid.....\$9.95

[5] WARDS SPECIAL TANK DEVELOPING OUTFIT. Six pieces. The equipment and materials in this outfit if bought separately would cost \$6.21—buying it as a unit you save \$1.32. Outfit consists of equipment and materials needed to develop roll film from 35mm. to $2\frac{1}{2}$ x $4\frac{1}{4}$ inches. Here's an opportunity for anyone who has thought about starting a darkroom laboratory to purchase everything needed in one complete set. Includes one adjustable Bakelite developing Tank and Reel (fully described and sold separately at left); one large 32-oz. bottle of Wards Liquid Acid Fix; two metal film clips; and Mansfield's 120-page book "Solutions"—complete illustrated instructions on developing and printing. Outfit can be added to as your need for advanced equipment grows.

67 CM 4925L—Ship. wt. 20 lbs.\$4.89
Plus 19c Tax; Total..... 5.08

METAL FILM CLIPS. Pictured in set above. Spring type.

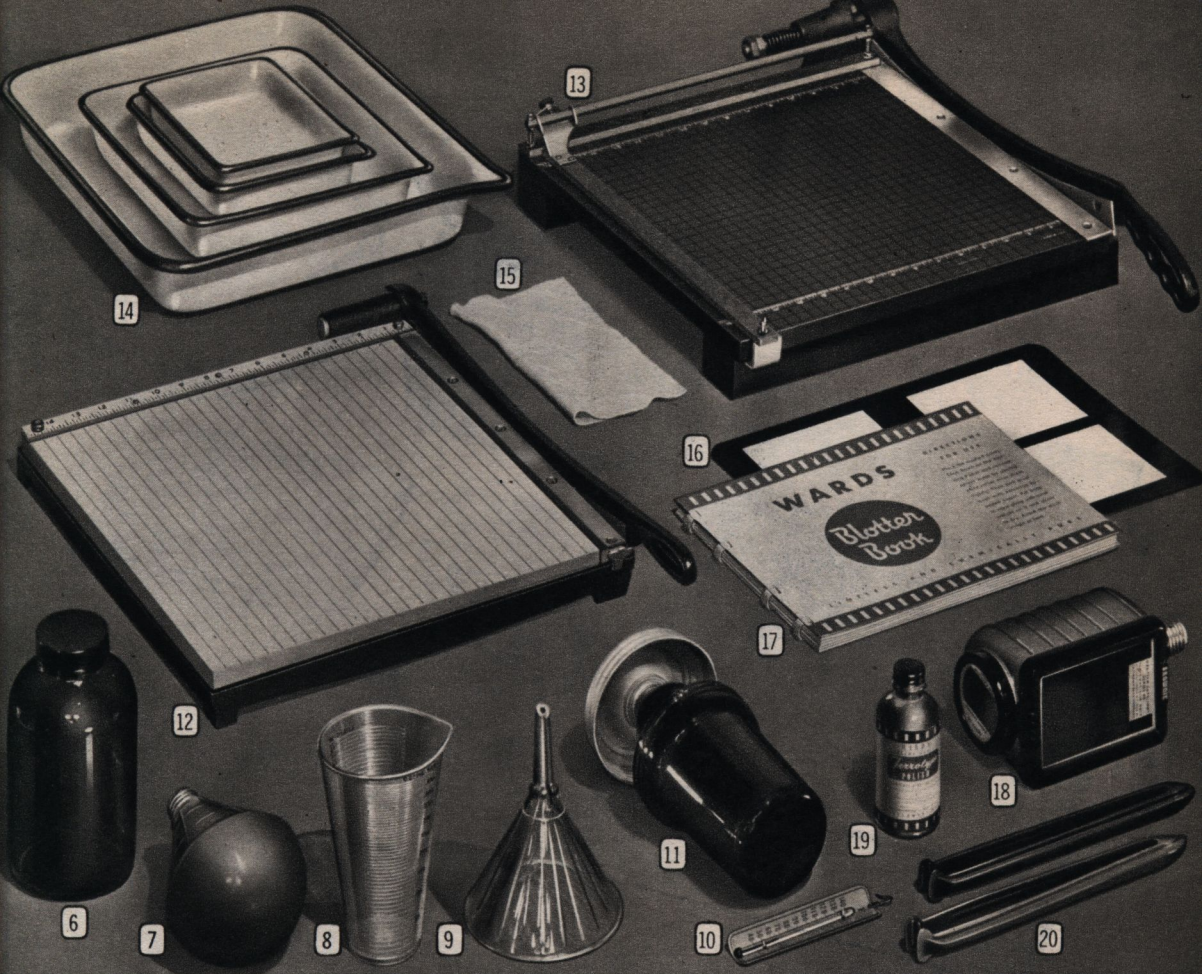
67 CM 4910—Ship. wt. 3 oz. 2 for.....19c

STAINLESS STEEL CLIPS. (Not pictured). Same as above, only have greater resistance to chemicals. Limit 2 per order.

67 CM 4913—Postpaid. Each 20c; plus 2c Fed. Tax; Tot., 22c

Use Wards Convenient Time Payment Plan

Combine all your photographic needs into one Time Payment Order of \$10 or More; every item in this catalog can be bought on credit. Any responsible person who has a regular income can easily establish credit at Wards. See Page 3 for complete information as to down payments, terms, etc.



Efficient Developing, Finishing Equipment

- [6] AMBER GLASS BOTTLES. Equipped with bakelite caps.
 67 CM 4918—1-qt. size. Ship. wt. 7 oz. Each 20c; 6 for \$1.00
 67 CM 4919—2-qt. size. Ship. wt. 10 oz. Each 35c; 6 for 1.89
 67 CM 4920—4-qt. size. Ship. wt. 1 lb. Each 45c; 6 for 2.49

- [7] Two-WAY DARKROOM LIGHT. Plastic Ruby.
 67 CM 4928—Fits standard outlet. No Bulb. Ship. wt. 6 oz. 47c

- [8] 67 CM 4914—Plastic Graduate. 8-oz. size. Wt. 3 oz. 39c
 67 CM 4915—Plastic Graduate. 16-oz. Wt. 7 oz. 59c

- [9] 67 CM 4943—8-oz. RIBBED GLASS FUNNEL. Wt. 8 oz. 29c
 67 CM 4944—16-oz. RIBBED GLASS FUNNEL. Wt. 1 lb. 59c
 67 CM 4916—Plastic Funnel. 16-oz. Size. Ship. wt. 5 oz. 59c

- [10] TESTRITE THERMOMETER. Non-corrodible stainless steel.
 67 CM 4951—Scale, 20° to 150° F. Ship. wt. 5 oz. 55c

- [11] "REXO" DARKROOM LAMP. Metal shell, ruby globe.
 67 CM 4932—With 110-volt amber bulb. Ship. wt. 1 lb. \$1.19
 DARKROOM BULB ONLY. 110-v. Ship. wt. 3 oz.
 67 CM 4911—Amber. 45c; 67 CM 4912—Ruby. 45c

- [12] EASKO TRIMMING BOARD. Eastman's finest trimmer. Wood-
 en table ruled in half-inch squares. Metal parts black en-
 amel. Spring blade return holds blade in cutting position.
 67 CM 4930T—12-in. size. No. 4. Postpaid. \$7.50
 67 CM 4931T—15-in. size. No. 5. Postpaid. 8.50

- [13] PREMIER TRIMMING BOARD. CMP-7 Form required—see
 Page 3. Hard rock Maple. Lines scored in 1/2-in. squares
 Blade is automatically held open to avoid accidents.
 ★67 CM 4939T—18-in. Board. Postpaid. \$18.50
 ★67 CM 4940T—24-in. Board. Postpaid. 27.50

- [14] "CESCO" ENAMELED STEEL TRAYS. Pour-lip style.
 67 CM 4905—For prints up to 4x6 in. Shipping weight 14 oz.
 39c; plus 5c Federal Tax. Total. 44c
 67 CM 4906—For prints up to 5x7 in. Ship. wt. 1 lb. 4 oz.
 45c; plus 6c Federal Tax. Total. 51c
 67 CM 4907—For prints up to 8x10 in. Ship. wt. 2 lbs. 4 oz.
 69c; plus 10c Federal Tax. Total. 79c
 67 CM 4908—For prints up to 11x14 in. Ship. wt. 5 lbs. 4 oz.
 \$1.39; plus 18c Federal Tax. Total. \$1.57
 ★67 CM 4909T—Takes CMP-7 Form—see Page 3. For prints
 up to 16x20. Postpaid. \$2.89; plus 40c Fed. Tax. Total. \$3.29

- [15] PHOTO CHAMOIS. Size 5 by 7 inches.
 67 CM 4921—Ship. wt. 4 oz. 25c

- [16] BLACK ENAMELED FERROTYPED PLATES. Size 10x14 in.
 —Med. wt. NOT AVAILABLE
 —Heavy weight. NOT AVAILABLE

- CHROME PLATED FERROTYPED PLATE. (Not pictured). 10x14 in.
 67 CM 4923—Triple-plated. Ship. wt. 10 oz. Each. 69c

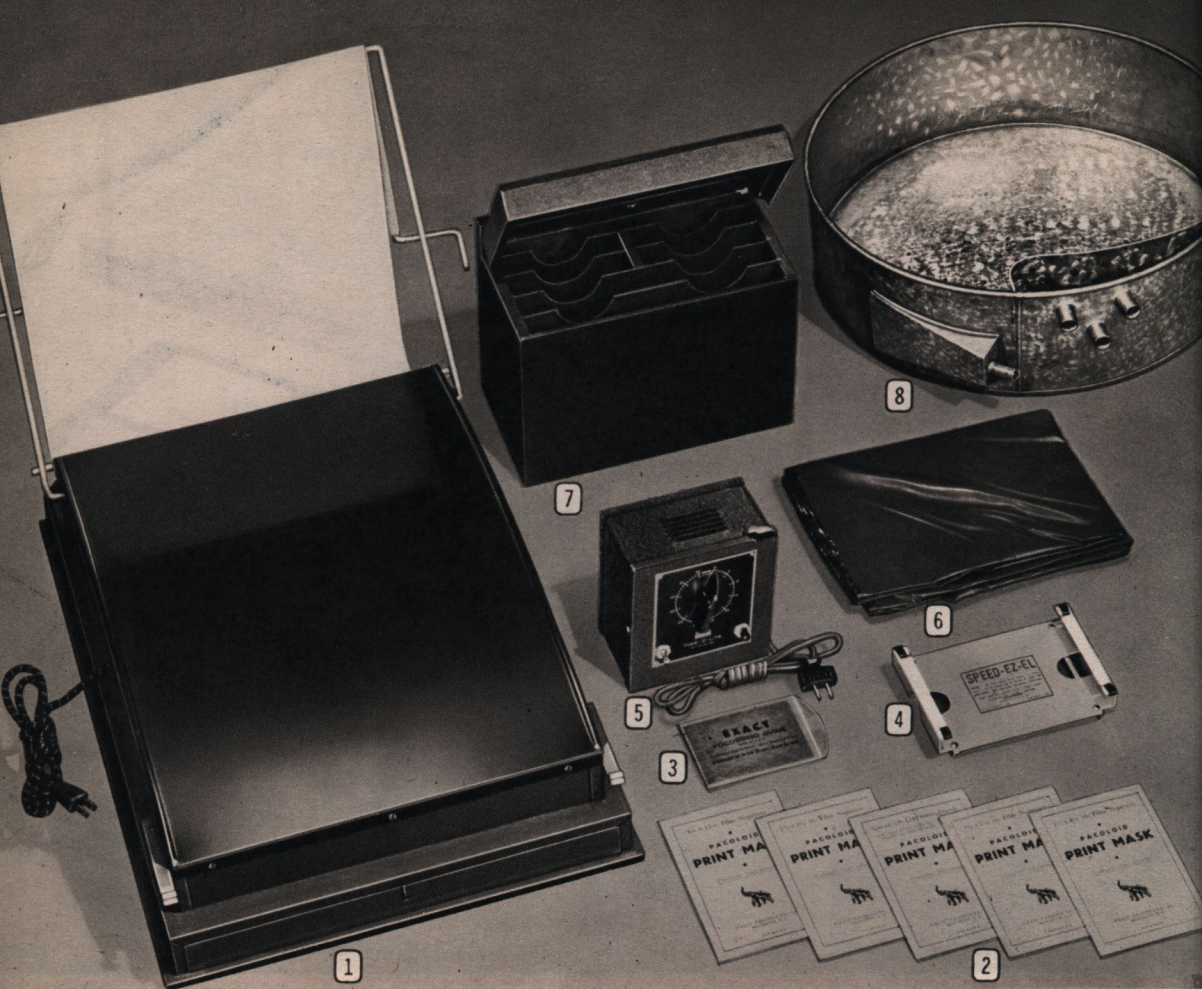
- [17] BOUND BLOTTER BOOK. 18 sheets, size 9 1/4 x 11 1/2 in.
 67 CM 4926—Ship. wt. 1 lb. 6 oz. 59c

- [18] BROWNIE SAFELIGHT. Model D. Metal shell with lock ring for
 circular safelight. With Series 2 filter (Red).
 67 CM 4937T—No bulb. Uses standard 10-watt. Postpaid. \$2.00

- [19] FERROTYPED POLISH. For regular or Chrome plated plates.
 67 CM 4302—4-oz. bottle. Ship. wt. 10 oz. 19c

- FLOATING THERMOMETER. Weighted end—floats upright.
 67 CM 4901—Wt. 4 oz. 29c; plus 2c Fed. Tax. Total. 31c

- [20] PRINT TONGS. Durable plastic. Length 10 in. Two in set.
 67 CM 4942—Ship. wt. 6 oz. 1 Red, 1 Black. Pair. 49c



Time-saving Accessories for the Darkroom

1 **ARKAY PRINT DRYER.** CMP-7 Form required—see Page 3. Has 2 convex heating surfaces, 16¼ by 22½ in., to accommodate chrome ferrotype plates up to 14 by 20 in. Dries glossy prints in 3 to 4 minutes. Automatic thermostat keeps heat constant as set—no damaged prints due to overheating. Uniform distribution of heat over both drying surfaces prevents buckling of prints. White canvas overlay holds ferrotype plates and prints in perfect contact with surfaces. Strong welded steel frame. For 110-120 volts. 575 watts.
★67 CM 4950T—Postpaid.....\$33.85

2 **PACOLOID MASKS.** Die cut from heavy weight black paper. For enlarging and contact printing work. 5 sizes: 35mm.; 2¼ x 2¼ in.; 2¼ x 3¼ in.; 2¼ x 4¼ in.; and 9 x 12 cm. Ship. wt. 4 oz.
67 CM 4934—State size wanted.....10c

3 **FOCUSING STRIPS.** For needle-sharp focusing in enlarger—help avoid fuzzy prints, help save scarce photographic papers. Strip consists of negative covered with clear designs. Will not fade. Ship. wt. each, 2 oz.
67 CM 4945T—35mm. or ½ V.P.....29c
67 CM 4946T—2¼ by 3¼-in. size.....39c

Buy Photographic Supplies on Wards
Time Payment Plan—See Page 3

4 **SPEED-EZ-EL.** Enlarging paper holder—place in position on baseboard, insert paper and make exposure. Provides uniform margins without adjusting for each print you make. Rubber strips on bottom prevent slipping.

67 CM 4947T—For 3½ x 5-in. paper. Shipping weight 10 oz.....79c
67 CM 4948T—For 4 x 5-in. paper. Shipping weight 1 lb.....79c
67 CM 4949T—For 5 x 7-in. paper. Shipping weight 1 lb. 4 oz.....\$1.19

5 **TIME-O-LITE METERS.** Can be used for controlling Enlargers, Printers, Photo Engraving, Camera Exposure and other photographic devices. Automatic reset, no springs to rewind. Baked crystal Black finish. Black bakelite indicator with white hairline guide. Life-time self-lubricating synchronous motor. 6-ft. cable; rubber plug. Size 5 by 5 by 2½ in.

MODEL M-39 TIME-O-LITE METER. For 110-120-volt, 60-cycle A.C. 750 watts.
★67 CM 2164T—Postpaid. \$16.75; plus \$1.09 Fed. Excise Tax. Total....\$17.84
MODEL P-39 TIME-O-LITE METER. For 110 to 120-volt, 60-cycle A.C. 1500 watts. Additional outlet for operating Timer with foot switch for remote control.

★67 CM 2165T—Postpaid. \$21.00; plus \$1.36 Fed. Excise Tax. Total....\$22.36

6 **ENLARGER COVER.** Protect lenses and other vital parts from dust and foreign elements. Fits all enlargers sold by Wards. Cord ties at base.

67 CM 4938T—Ship. wt. 10 oz.....\$1.39

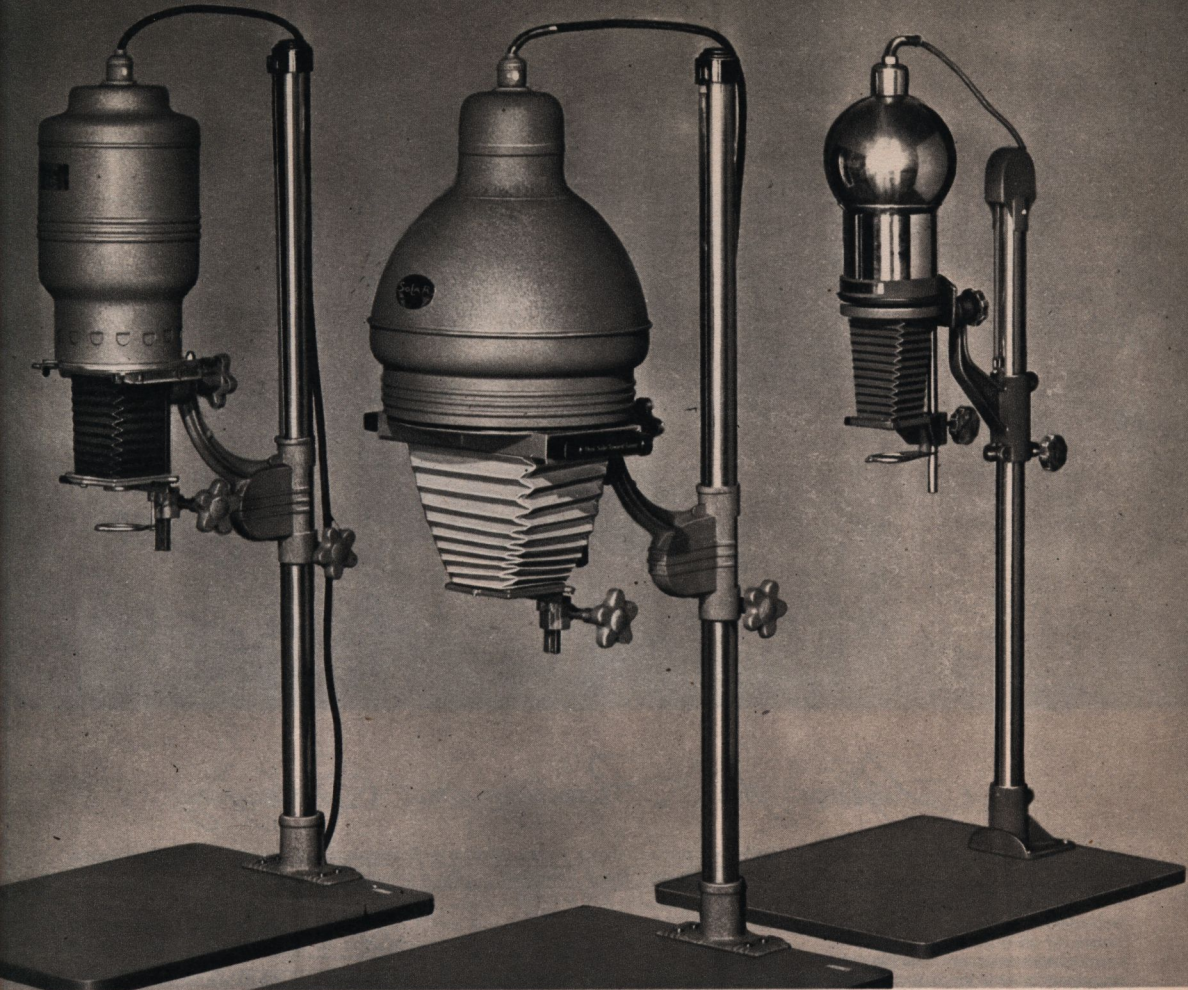
7 **PAPER SAFE.** Protection for enlarging and contact papers. Wood box covered with black artificial leather. Cover spring hinged at top, fits tightly—no light leaks. Four sections for papers up to 5 by 7 in. Three sections for larger sizes up to 8 by 10 in. Size overall: 9½ by 11½ by 6½ in.

67 CM 4927T—Ship. wt. 2 lbs.....\$3.89

8 **INGENTO PRINT WASHER.** Scientifically designed—hypo and heavy liquid at bottom is forced up through outlet. Galvanized steel construction. Rotary, swirling motion, regulated by force of water from tap. Diameter 20 in.

67 CM 4936T—Ship. wt. 8 lbs.\$8.49; plus 74c Fed. Tax. Total.....\$9.23

NOTICE: Letter "T" following Catalog Number means that merchandise is not stocked at all Ward Mail Order Houses, and your order may be transferred to another House for filling and shipment. Order in usual manner and allow postage from Ward Mail Order House nearest you. Also allow extra time. See Page 3 for complete explanation.



Enlargers for Amateur or Professional

SOLAR MINI ENLARGERS. CMP-7 Form required—see Page 3. Enlarge up to 8 times on baseboard. Adj. double condenser light system. Rack and pinion system gives "feather touch" focusing. Solar Tri-switch; triple-intensity 100-watt bulb; red (non-actinic) 16 by 20-in. baseboard; dustless negative carrier. For 110-120 volts. Cash or terms.

MODEL 35. For all single and double frame 35mm., Bantam and 1/2 vest pocket negatives. Complete with 2-in. f/4.5 lens. State negative carrier size.

★67 CMN 4001T—Shipping wt. 36 lbs. \$48.50; plus \$4.09 Fed. Tax. Total \$52.59

MODEL 120. For all roll and cut film sizes up to and including 2 1/4 x 3 1/4 in. Has 3-in. f/6.3 anastigmat lens. Ship. wt. 36 lbs. State size negative carrier wanted.

★67 CMN 4000T—\$54.00; plus \$4.58 Federal Excise Tax. Total \$58.58

67 CM 4004T—LENS BOARD. 2 1/4 by 3 1/4-in. Speed Graphic size. Wt. 3 oz. \$9.95

67 CM 4005T—LENS BOARD ADAPTER... to fit 3 1/4 by 4 1/4-in. Speed Graphic lens board. Ship. wt. 4 oz. \$1.39

DUSTLESS NEGATIVE CARRIERS FOR SOLAR ENLARGERS. 35mm. Double Frame; Bantam; 1/2 V.P.; 6 by 6-cm; 6 by 9-cm; Nos. 120, 116; 3 1/4 x 4 1/4-in.; and 4x5-in. Ship. wt. each 6 oz.

67 CM 4007T—State size \$3.69

SOLAR STUDIO ENLARGERS. CMP-7 Form required—see Page 3. Enlarge up to 8 times on baseboard. Bi-plane diffusion light system. Top plane is heat-absorbing glass; lower plane is opal glass. Rack and pinion system gives "feather touch" focusing. Interchangeable lens boards, 2 1/2 by 2 1/2 in., or 4 by 4 in., permit use of lens of different focal lengths. 150-watt bulb, table top Tri-Switch, 20 x 24-in. baseboard. 110-120 volts. Cash or terms.

MODEL 45 . . . 4 BY 5-INCH ENLARGER. (No lens.) With red (non-actinic) baseboard; bulb; 4 by 5-in. neg. carrier.

★67 CMN 4002T—Shipping wt. 50 lbs. \$58.50; plus \$4.93 Fed. Tax. Tot. \$63.43

★67 CM 2219T—4 3/4-in. f/4.5 anastigmat lens for Model 45. Shipping wt. 6 oz. \$19.95 plus \$2.42 Fed. Tax. Total \$22.37

MODEL 57 . . . 5 BY 6-IN. ENLARGER. (No lens.) Red (non-actinic) baseboard; enlarging bulb; 5 by 7-in. negative carrier.

★67 CMN 4003T—Shipping wt. 53 lbs. \$62.00; plus \$5.24 Tax. Total \$67.24

★67 CM 2220T—5 1/2-in. f/6.3 anastigmat lens only for Model 45 or 57. Ship. wt. 6 oz. \$18.50; plus \$2.25 Fed. Tax. Total \$20.75

★67 CM 2221T—6 3/8-in. anastigmat lens only for Models 45 and 57. Wt. 6 oz. \$37.50; plus \$4.50 Tax. Total \$42.00

KODAK PRECISION ENLARGER. CMP-7 Form required—see Page 3. Enlarges up to 8 times on baseboard. Enlarging head employs condenser lenses with an opal enlarging lamp to give a combination of specular and diffuse illumination which is ideal for small negatives, and to provide an even light. Precision focusing knob gives hairline accuracy.

Glassless negative carriers are available in 10 sizes for negatives ranging in size from 35mm. to and including 2 1/4 x 3 1/4-in. State size negative carrier wanted. With No. 2, 3 or 4 condenser for use with 2, 3- or 4-in. lens, respectively. State choice. Mounted on 17 1/2 by 22-in. baseboard with No. 212 bulb. For 110 to 120-volt A.C. or D.C. Postpaid. Same price cash or terms.

★67 CMN 4008T—Lens not included. \$72.00; plus \$6.75 Fed. Tax. Tot. \$78.75

NO. O LENS BOARD. For Kodak Enlarger described above.

67 CM 4009T—Postpaid \$98

ALL ENLARGERS ADJUSTABLE

All the Enlargers pictured and described on this page are easily adjusted from a vertical to a horizontal position, for projecting image required distance when making large size prints or photo murals. Complete instructions are included with every Enlarger.



Papers for Printing and Enlarging

Important Notice Regarding Papers

Increased requirements of the Armed Forces for all types of photographic papers have seriously restricted the amount available for any other use. What little is left is needed to take care of high rated priority orders, with none available for non-essential use. It is possible that Wards Retail Stores may have limited quantities at times—we suggest you visit your nearest Ward store occasionally.

How to Select Printing and Enlarging Papers

Paper selection is determined by: (1) the negative; (2) effect desired or purpose of print. It is vital to distinguish between *contrast* and *density* in negatives.

Density affects printing time but not paper selection. Either a generally *thin* or *dense* negative may have good or poor contrast.

Contrast is the relation between dark and light areas—a *contrasty* negative has extreme differences; a *flat* negative has little difference; a *normal* negative is in between. For *contrasty* negatives select a "soft" paper; for flat negatives select a "hard" paper.

Emulsion numbers run from the lowest for softest paper to highest for hardest paper. For average home printing, 3 papers (For example, either Wards Nos. 2, 3 and 4 or Eastman Nos. 1, 2 and 3, listed at right) will give good range.

GLOSSY CONTACT PRINT PAPER, Wards or Eastman. Single weight. White. Postpaid.

No. 2 Emulsion	No. 3 Emulsion	No. 4 Emulsion	WARDS	Doz.	Gross
For contrasty negatives.	For normal negatives.	For flat negatives.	1 7/8 x 2 3/4 in.
			2 1/2 x 3 1/2 in.
			2 3/4 x 4 1/2 in.
			5 x 7 in.

(State: Art. No.; Size; Quantity wanted.)

No. 1 Emulsion	No. 2 Emulsion	No. 3 Emulsion	EASTMAN	Doz.	Gross
For strong neg. contrast.	For average negatives.	For flat negatives.	1 7/8 x 2 3/4 in.
			2 1/2 x 3 1/2 in.
			2 3/4 x 4 1/2 in.
			3 1/4 x 4 1/4 in.
			3 1/4 x 5 1/2 in.
			4 x 6 in.

(State: Article No.; Size; Quantity wanted.)

EASTMAN VITAVA OPAL. Ample speed. Warm tone quality. For portrait projection prints and reduced light contact printing. Postpaid. State: Article No.; Size; Quantity.

Article No.	Surface	Weight	Emulsion	8x10 in.	11x14 in.
	Cream White Lustre (G)	Double	No. 2
	Cream White Matte (H)	Double	No. 2
	Cream White Rough	Double	No. 2

Vitava Prices include Fed. Excise Tax of 7c on 8x10 paper, and 15c on the 11x14.

KODABROMIDE ENLARGING PAPERS. Fast full scale emulsions—No. 1 for contrasty, No. 2 for normal, No. 3 for flat negatives. Postpaid. State: Article No.; Emulsion; Size.

Article No.	Surface (All White)	Wt.	Emul.	4x6 in.	5x7 in.	8x10 in.	11x14 in.
	Glossy (F)	Sing.	1, 2, 3
	Semi-Matte (E)	Dble.	1, 2, 3
	Smooth Lustre (N)	Dble.	1, 2, 3
	Fine Gr. Lustre (G)	Dble.	1, 2, 3

WARDS BROMIDE ENLARGING PAPERS. Med. fast—gives full detail. Neutral black. Wide latitude. No. 2 emul.—for average to med. contrast neg. State: Art. No.; and Size.

Article No.	Surface	Wt.	Emul.	4x6 in.	5x7 in.	8x10 in.	11x14 in.
	Glossy	Sing.	1, 2, 3
	Semi-Matte	Sing.	1, 2, 3
	Glossy	Dble.	1, 2, 3
	Semi-Matte	Dble.	1, 2, 3

DEFENDER VELOUR BLACK ENLARGING PAPERS ... Fast Chloro-bromide. Prints have fidelity to negative tone scale. Medium high exposure speed. EMULSIONS: No. 1 soft; No. 2 normal; No. 3 medium hard; No. 4 hard. Postpaid. State: Art. No.; Emulsion; Size.

Article No.	Surface	Wt.	Emul.	4x6 in.	5x7 in.	8x10 in.	11x14 in.
	Semi-Matte (A)	Sing.	2, 3, 4
	Glossy (T)	Dble.	1, 2, 3
	Semi-Matte (B)	Dble.	2, 3, 4
	Velvet White (DL)	Dble.	2, 3, 4
	White Silk (Y)	Dble.	2, 3, 4
	Illustro (BT)	Dble.	2, 3, 4



Accurately Prepared Photo Chemicals

Fine Grain Developers

EDWAL 111 DE LUKE DEVELOPER. A high quality Developer for all papers. Produces rich black and fog-free white—excellent contrasts. Concentrate—dilute to use. Instructions.
67 CM 4333T—32-oz. Bottle. Ship. wt. 5 lbs.\$1.19

WARDS FINE GRAIN LIQUID DEVELOPER. Brings out maximum shadow details; no loss of highlights. Concentrated.
67 CM 4305—1-quart size. Instructions. Ship. wt. 5 lbs. .98c

MICROGRAIN "85" DEVELOPER. Fine grain, maximum shadow detail without loss of highlight. 35mm. negatives may be enlarged many diameters without coarse graining.
67 CM 4334T—Liquid form. 1-quart size. Postpaid . . . \$1.25

DEVELOPER. Fine grain for films, packs, plates. Minimum speed loss. Ship. wts. 12 oz.; 1 lb.; 2 lbs.
67 CM 4939—Concentrated form. Instructions. State size.
1-pint size . . . 32c; 1-quart size . . . 45c; 1-gal. size . . . 90c

DEFENDER 777 DEVELOPER. A popular fine grain Developer. Simple to prepare and use. Can be used at temperatures up to 90° F. No stop bath required. One box sufficient for processing 21 rolls of 35mm. film. Instructions.
67 CM 4335T—Ship. wt. 9 oz. Per Box.\$1.79

EDWAL THERMO FINE. A fine grain, non-staining developer. Will develop 10 to 12 rolls of 35mm. film or equivalent. May be used up to 90° F. without noticeable softening of emulsion. Instructions included. Shipping weight 12 oz.
67 CM 4311—One-quart size.33c

Eastman and Wards Standard Developers—Dry Powder Form

EASTMAN D-72 DEVELOPER. For contact and bromide papers.
67 CM 4318—Makes 2 quarts. Ship. wt. 1 lb. 2 oz. 32c
67 CM 4319—Makes 1 gallon. Ship. wt. 1 lb. 12 oz. 54c

EASTMAN D-76 DEVELOPER. For low contrast development.
67 CM 4323—Makes 1 quart. Ship. wt 8 oz. 23c
67 CM 4324—Makes 2 quarts. Ship. wt. 12 oz. 32c
67 CM 4325—Makes 1 gallon. Ship. wt. 1 lb. 8 oz. 54c

WARDS M.Q. DEVELOPER. Standard developing formula—highest quality chemicals used. For film, paper, plates.
67 CM 4310—Ship. wt. 8 oz. Five Tubes.19c

Fixers and Hardeners

WARDS LIQUID ACID FIX. Concentrated acid fixing and hardening solution. The 16-oz. bottle makes 64 oz. of solution.
67 CM 4307—32-oz. Bottle. Ship. wt. 5 lbs.55c

WARDS RAPID FIX. Clears film in 40 to 60 seconds; fixes it in 2 to 3 minutes; hardens the emulsion in 3 minutes. One-quart size makes 1 gallon. Instructions.
67 CM 4308—1-qt. Bottle with hardener. Ship. wt. 7 lbs. .98c

EASTMAN ACID FIX. (Hypo). A concentrated acid fixing powder—made of finest chemicals. Two-lb. can makes 1 gallon.
67 CM 4314—2-lb. Can. Instructions. Postpaid.45c

WARDS ACID HYPO AND HARDENER. For film, paper, plates. Highest quality chemicals. Instructions. Ship. wt. 1 lb.
67 CM 4306—One lb. (makes 64 oz. of solution).....19c

EDWAL CHROME HARDENER. A chrome-alum bisulphite Hardener for films between development and fixing. Makes 6 pints of hardener. Instructions. Ship. wt. 12 oz.
67 CM 4312—12-unit Package.33c

WARDS SHORTSTOP AND HARDENER. Will not stain or streak prints. Concentrated—bottle makes 4 gallons.
67 CM 4304—8-oz. Bottle. Ship. wt. 10 oz.49c

WONDROP. Concentrated wetting agent. Use one drop to 8 oz. of developer or toner fixer. Prevents streaks, stains.
67 CM 4337T—4-oz. Bottle. Ship. wt. 6 oz.98c

EASTMAN D-52 DEVELOPER. For contact, enlarging papers.
67 CM 4320—Makes 1 quart. Ship. wt. 4 lbs.19c
67 CM 4321—Makes 2 quarts. Ship. wt. 8 oz.27c
67 CM 4322—Makes 1 gallon. Ship. wt. 12 oz.39c

EASTMAN DEVELOPERS. For films, plates and papers. For use in tray or tank. Instructions. Shipping weight 7 oz.
67 CM 4315—5 Tubes of M.Q. Developer.28c
67 CM 4316—5 Tubes Universal Developer.33c
DEFENDER M.Q. TUBES. Standard formula. For papers, plates and films. With complete instructions. Ship. wt. 7 oz.
67 CM 4336—6 Tubes per box.32c



Practical Books for Improved Pictures

Informative General Manuals

- (A)** **HOW TO MAKE GOOD PICTURES.** Eastman's book on cameras, photography, developing, printing.
67 CM 4800—New edition. *Postpaid*45c
- (B)** **ELEMENTARY PHOTOGRAPHY.** By Nebbitts, Brehm and Priest. Manual of "still" photography. Illustrated. Cloth bound. 289 pages.
67 CM 4802T—Ship. wt. 1 lb.89c
- (C)** **BETTER PHOTOGRAPHY MADE EASY.** Anso's Manual on better picture taking. 60 pages of useful information.
67 CM 4817—*Postpaid*21c
- (D)** **DEVELOPING AND PRINTING MADE EASY.** Pub. by Anso.
67 CM 4816—60 pages. *Postpaid*21c

The Little Technical Library

- (E)** Covers entire field of amateur photography. Pocket size manuals bound in artificial leather. Volumes and Numbers are: (1) Your Camera and How It Works; (2) Developing, Printing and Enlarging; (3) Filters and Their Uses; (6) Color in Photography; (7) Child Photography; (8) Home Portraiture and Make-Up; (9) Tricks for Camera Owners; (11) Outdoor Photography; (12) Indoor Photography; (14) Photographing Action; (20) Darkroom Handbook; (21) Beginners' Book of Photography; (23) Taking Pictures at Night; (28) Color Movies for the Beginner. *Postpaid*.
67 CM 4811T—State volume no. and title. Each79c
- (F)** **U.S. CAMERA ANNUAL, 1944. THE U.S.A. at War.** 224 pages of war pictures with their stories. Edited by Tom Moloney. Photographs selected by Comm. Edward Steichen, U.S.N.R.
67 CM 4813T—Size 10 by 13 in. *Postpaid*\$4.50
- (G)** **SOLUTIONS.** Introduction to photographic chemistry. Basic experiments and formulas. 128 pages.
67 CM 4812—*Postpaid*\$1.80

Six Kodak Data Books . . . Other Manuals

- (H)** **KODAK FILM DATA BOOK.** New edition. Fits Reference Handbook (N) below. Film selections, specifications.
67 CM 4804—90 pages. *Postpaid*25c
- (J)** **SLIDE DATA BOOK.** Slide making, printing, developing, etc. Fits into Reference Handbook (N) below. 68 pages.
67 CM 4805—*Postpaid*25c
- FILTER DATA BOOK.** (Not shown.) Types, control, specification.
67 CM 4808—48 pages. *Postpaid*25c
- KODACHROME DATA BOOK.** (Not pictured above.) Complete information on Kodachrome photography. 50 pages.
67 CM 4806—*Postpaid*25c
- EASTMAN PAPER DATA BOOK.** (Not pictured above.) Selections, values, of contact and enlarging paper. 50 pages.
67 CM 4807—*Postpaid*15c
- FORMULA DATA BOOK.** (Not shown.) Complete chemical data.
67 CM 4809—40 pages. *Postpaid*25c
- (K)** **HOW TO MAKE GOOD MOVIES.** Published by Eastman. Covers focusing, exposing, film. 232 pages.
67 CM 4801—*Postpaid*\$1.80
- (L)** **GRAPHIC GRAFLEX PHOTOGRAPHY.** By Morgan and Lester.
67 CM 4815T—416 pages. *Postpaid*\$4.00
- (M)** **PHOTOGRAPHY OF COLORED OBJECTS.** Eastman's book on taking color photographs.
67 CM 4803T—Shipping weight 1 lb.89c
- (N)** **KODAK REFERENCE HANDBOOK.** Complete Manual on Photography. Ten indexed sections. Loose leaf style.
—*Postpaid* NOT AVAILABLE



Cases for Proper Protection of Cameras

Ever-Ready Leather Carrying Cases

[1] to [6] Convenient, practical. Fit snugly—protect camera from ordinary scuffs and bumps. Front opens so case stays around camera when in use. Sling shoulder strap around neck, and camera is ready for instant use. *Postpaid.*
For Kodak Bantam, with f/5.6 or f/6.3 lens.

67 CM 308T—Not pictured. \$2.75

(1) 67 CM 201T—For Wardflex or Argoflex Cameras. . . \$2.98

(2) 67 CM 110—For Eastman 620 Vigilant or Monitor. . . \$3.89

67 CM 112—For Eastman 616 Vigilant or Monitor. . . 4.49

(3)(4) ★67 CM 315T—For Kodak 35mm. Cameras. . . . \$4.95

67 CM 319T—For Kodak 35mm. with range finder. 7.00

(5) For Kodak Bantam with f/4.5 Lens.

★67 CM 310T—(CMP-7 Form required—see Pg. 3). \$4.25

(6) 67 CM 341—For Argus C-2 and C-3 Cameras. . . . \$3.19

67 CM 338—For Argus Color Cameras. 3.19

67 CM 343—For Argus Model A-2 Cameras (Not shown.). 1.98

67 CM 115T—For Ansco Speedex Cameras (Not shown.). 3.29

Zipper Pouch Cases

[7] For small cameras or accessories, or use as utility bags. Russet elk-tanned Cowhide. Strap. *Postpaid.*

For Kodak Vigilant or Monitor 6-20 cameras. (Pictured.)

67 CM 119—Size 4 by 7¼ by 2 in. \$2.39

For Bullet, Bantam or similar cameras. (Not shown.)

67 CM 116—Size 3½ by 4¾ by 1½ in. \$1.89

For Kodak 620 and similar cameras. (Not shown.)

67 CM 117—Size 3½ by 6½ by 2 in. \$2.19

For Kodak 616 and similar cameras. (Not shown.)

67 CM 118—Size 3¾ by 7¾ by 2 in. \$2.29

Sheath Type Saddle Leather Cases

[8] to [11] Adjustable shoulder strap. Snap lock. For movie and still cameras. All *Postpaid*, except (10).

(8) For 6-20 size folding cameras.

67 CM 113—Inside size 6¾ by 1¾ by 3¾ in. \$1.89

For 6-16 size folding cameras. Like above. (Not shown.)

67 CM 114—Inside size 7¾ by 1½ by 3¾ in. \$2.19

(9) For Bell & Howell 8mm. Cameras. Lens block.

67 CM 702T—Inside, 5½x11¾ by 3¼ in. \$3.50

For Eastman 8mm. Models 20, 25, similar. (Not shown.)

67 CM 704—Inside size 8½ by 17½ by 4¾ in. \$3.29

(10) For Revere 8mm. size cameras. Ship. wt. 1 lb.

67 CM 701—Inside size 5 by 2¼ by 4½ in. \$2.79

(11) For 8mm. Keystone or similar size cameras.

67 CM 703—Inside size 6½ by 2 by 4 in. \$2.98

[12] SLIDE PROJECTOR CASES. Compartment for 100 slides in cover. Artificial leather-covered with handle.

67 CM 363T—For Argus Slide Projector. Ship. wt. 5 lbs. . . \$5.65

67 CM 362T—For Vokar Model D. Ship. wt. 5 lbs. 5.65

Handy Zipper "Gadg-It" Bags

[13] [14] Carry and protect accessories with camera. Selected leather—full welt construction. Reinforced.

[13] DE LUXE BAG. 5 reinforced pockets. Elk-tanned Cowhide.

67 CM 3339T—9½x11x3 in. Ship. wt. 2 lbs. 2 oz. . . \$11.75

Same as above, but for miniature cameras. (Not shown.)

67 CM 3340T—7½ by 7½ by 2½ in. Ship. wt. 2 lbs. . . . \$7.49

[14] PAK-ALL. Top grain Cowhide, russet elk-tanned.

67 CM 3338T—7½ by 7½ by 2 in. Ship. wt. 12 oz. . . . \$3.95



Retouching, Coloring, Mounting Materials

1 2 3 MARSHALL OIL COLOR SETS. Professional quality, transparent, permanent oils.

1 STUDENT SET. Contains eight 2-in. tubes of assorted colors; bottle of mixing solution; absorbent cotton; 6 skewers; instructions.
67 CM 4331—Ship. wt. 1 lb. 6 oz.\$1.89

2 SAMPLER. Eight colors, each in 1-in. tube; absorbent cotton; mixing solution; 6 skewers; instructions.
67 CM 4330—Ship. wt. 6 oz.89c

3 ACADEMY SET. Contains fifteen 2-in. tubes of assorted colors; extender; marline; prepared mixing solution; glass palette; absorbent cotton; 6 skewers; instructions.
67 CM 4332—Wt. 2 lbs. 4 oz.\$3.55

4 X-ACTO RETOUCHING SET. Contains 3 knives and 12 blades ranging from 1/4-in. to 1/2-in. Various shapes. Use for etching, carving, etc. Packed in attractive hinged wood chest.
67 CM 4941T—Ship. wt. 7 oz. ...\$3.39

5 TONER OUTFIT. Includes four 3-oz. bottles of Mansfield single solution toners—one each of Blue, Brown, Green and Red. For toning all kinds of papers, movies or transparencies. No bleach necessary. Instructions for using are included.
67 CM 4313T—Ship. wt. 3 lbs. ...\$1.69

6 KODAK SPOTTING COLORS. Black, White and Sepia. Ship. wt. 3 oz.
67 CM 4329T—Three colors for. ...25c

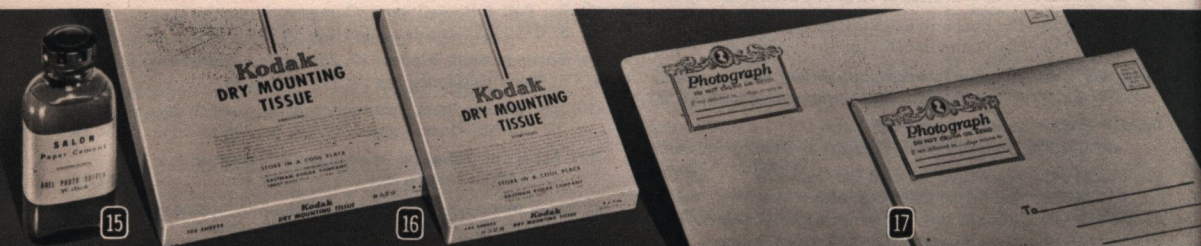
7 GOLBLEND TONER. For developing out papers other than bromide. In 2-oz. bottle with instructions.
67 CM 4338T—Ship. wt. 4 oz.89c

8 BLEACHING POWDER. For use with Anso Brovira toner below.
67 CM 4328T—Makes 16 oz. Wt. 3 oz. 15c

9 10 ANSCO TONERS. Proved high quality. Full instructions.

9 ANSCO SEPIA TONER. Concentrated. For use on prints. In 4-oz. bottle.
67 CM 4326T—Ship. wt. 7 oz.39c

10 ANSCO BROVIRA TONER. For chalk red to brown tones on bromide papers. In 4-ounce bottle.
67 CM 4327T—Ship. wt. 7 oz.69c



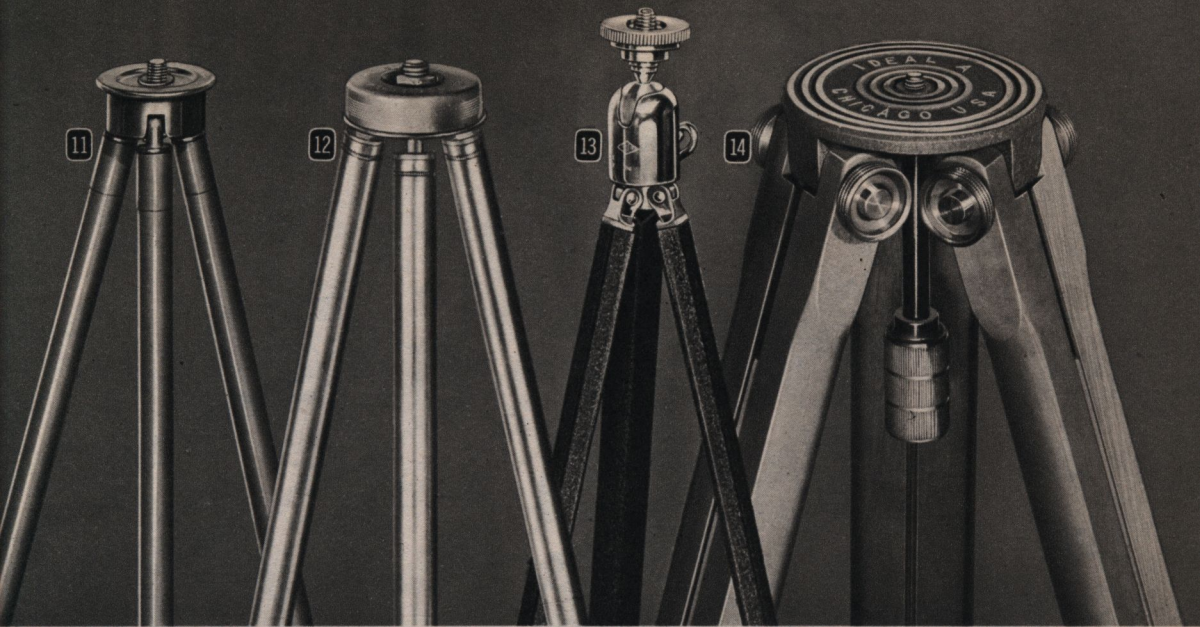
15 RUBBER CEMENT. For all types of mounting. Clean and convenient. Non-staining. In 3-oz. bottle.
67 CM 6406—Shipping weight 6 oz. Bottle.32c

16 EASTMAN DRY MOUNTING TISSUE. Makes permanent flat mountings of prints. No curling or warping.

Cat. Number	Size	Ship. Wt.	Per Gross
67 CM 6400T	4 by 5 in.	7 oz.	54c
67 CM 6401T	5 by 7 in.	12 oz.	98c
67 CM 6402T	8 by 10 in.	2 lbs.	\$1.79

17 INGENTO PHOTO MAILERS. Provide proper protection for mailing and handling of photographs. Made of chip and jute double corrugated board. Oversize. Each will take prints up to the full size shown in table below. The 16 by 20-in. size is extra strong, made of heavier weight board.

Cat. Number	Size	Ship. Wt.	Per Doz.
67 CM 6407T	5½ by 7½ in.	3 lbs.	59c
67 CM 6408T	8¾ by 10½ in.	6 lbs.	98c
67 CM 6409T	12½ by 14½ in.	8½ lbs.	\$1.39
67 CM 6410T	16 by 20 in.	14 lbs.	2.49



Tripods and Pan Heads for Steady Shots

A suitable tripod is a valuable accessory to even the casual photographer; a necessity to the expert. Even experienced photographers cannot be sure of holding a camera steady for exposures slower than 1/25 second. A tripod also facilitates finer adjustments. It makes it possible for you to leave

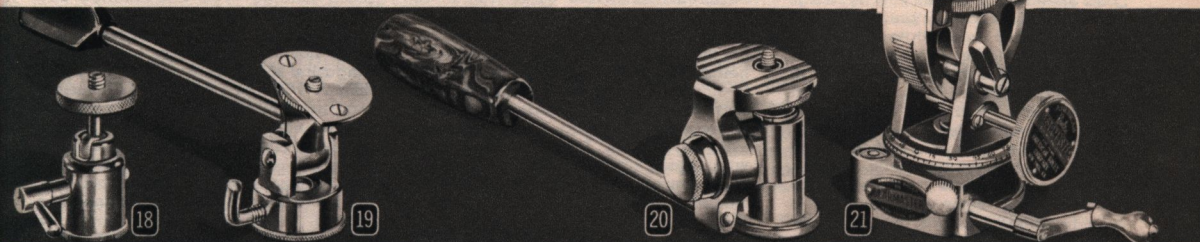
camera where you want it while making adjustments in composition. With a delayed action shutter device the photographer can get into the picture. From Wards tripods you can select what you need, whether a light, easily carried support or the steadier, heavier professional types.

11 EASTMAN NO. 0 TRIPOD. All brass construction with Olive Green finish. Three-section legs. Closes to 15½ inches; extends to 39 inches. Head has 1¼-inch diameter. Pointed metal feet for sure grip. A lightweight, sturdy, serviceable tripod at a low price. Satisfactory for light still or movie camera. Ship. wt. 1 lb. 12 oz.
67 CM 2110.....\$2.74

12 CHROMED METAL TRIPOD. Chrome plated steel—gives rigid sturdy support for both still and movie cameras. Four-section legs lock into position—close to 15½ inches; extend to 48 inches. Fits standard tripod sockets, accepts most Pan Heads (see descriptions below). Head is 2 inches in diameter. Pointed metal feet. Shipping wt. 3 lbs. 8 oz.
67 CM 2111.....\$4.98

13 ANSCO NO. 2 TRIPOD. Made of metal—upper sections have Black cracked finish, lower sections are smooth polished metal. Five-sided legs for greater rigidity. Four sections—close to 15½ in. extends to 48 in. Head has 1¼-inch diameter. Reversible stud fits all camera sockets. Pointed metal feet with removable rubber caps. Postpaid.
67 CM 2112T.....\$5.20

14 IDEAL A WOOD TRIPOD. Straight grain hardwood legs mounted to metal 3-in. head. Large knurled tension knobs on each leg for height adjustments. Reversible leg tips—one end steel and one end rubber for outdoor or indoor use. Extends to 58 inches, folds to 32 in. Threading handle. Ship. wt. 5 lbs. 8 oz.
67 CM 2114T—\$7.25; plus 54c Fed. Excise Tax. Total \$7.79

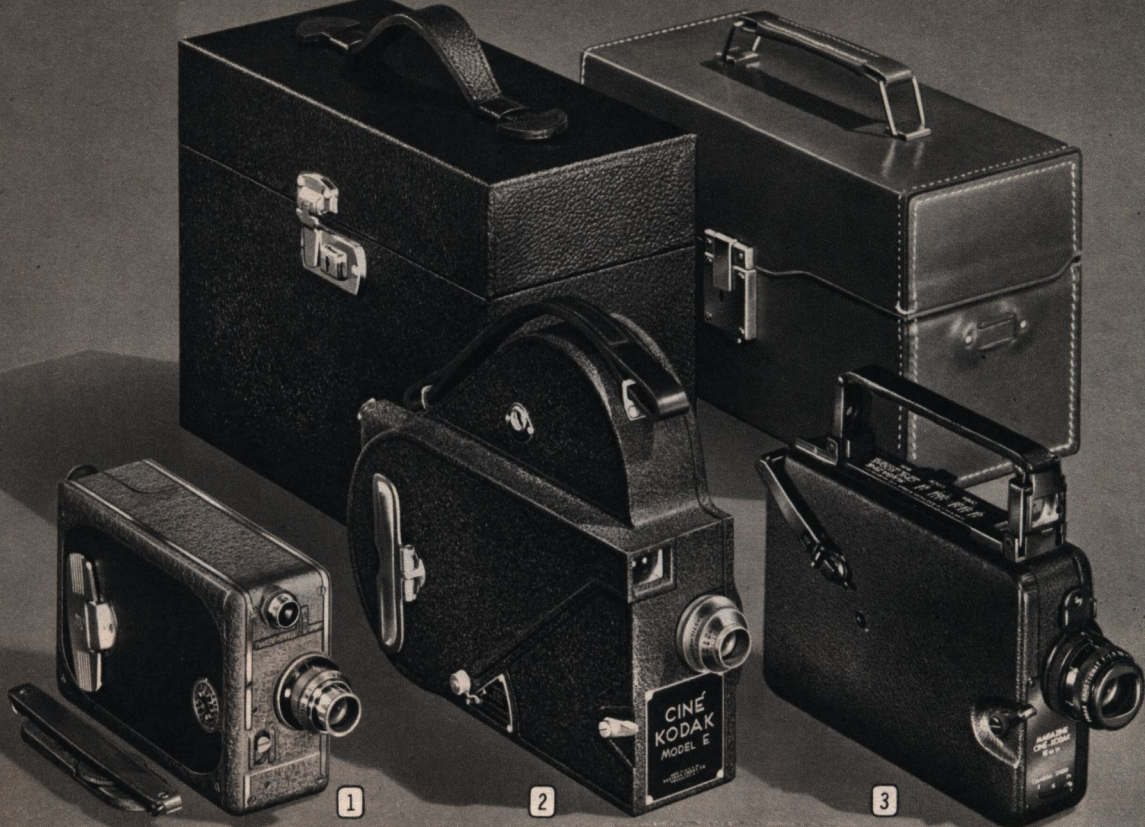


18 SWIVEL TRIPOD TOP. Quick-set lock holds ball and socket joint in any position. Fits standard tripods. For movie or still cameras. Lightweight, sturdy nickel plated metal. Useful accessory, though not as versatile or precise as heads at right. Ship. wt. 5 oz.
67 CM 2100.....89c

19 EZ PAN HEAD. One-hand control for tilt, panorama, through complete circle. Smooth, steady operation for all types cameras. Instant locking. Strong, light chrome plated metal. Fits standard tripod studs. (Finer, more precise Royal head at right.) Postpaid.
67 CM 2101T.....\$3.98

20 ROYAL PAN HEAD. Professional action. One-hand control for tilt and panorama, through complete arc. Gives smooth solid operation with all types of cameras. Instant-locking. Strong, lightweight, chrome plated metal. Fits all standard tripod studs. Shipped Postpaid.
..... NOT AVAILABLE

21 GEARMASTER TRIPOD HEAD. Fine quality. Precision gear controls. For professional panorama or tilt shots. Hairline angle adjustments. Swivel pans. Fits standard tripods; all cameras. One pan control, 1 to tilt. Built-in spirit level. No long handles. Chrome plated metal. Postpaid.
..... NOT AVAILABLE



Compact 16mm. Movie Cameras

The 16mm. Movie Cameras on this page are presented by Wards as outstanding cameras in a wide price range, available under wartime restrictions to authorized purchasers. We are sure you will find one of them suited to your needs. However, in normal times, Wards list, in addition, other popular cameras in both 16mm.

and 8mm. To purchase any of the cameras on this page you must sign CMP-7 Form—see Page 3 for complete information. You can buy any of these cameras on convenient Time Payments at the same price as for cash. All mailed *Postpaid*, from Factory—allow time. Send order to nearest Ward Mail Order House.

Bell & Howell Magazine Load

① A fine, versatile camera. Bell & Howell's well-known Filmo Auto-Load Speedster. The quick, easy, magazine loading enables you to change between black and white and color film, in the middle of a reel, without wasting film. The magazine holds 50 ft. of film. Equipped with fast anastigmat $f/2.7$ lens with 1-inch focal length. Lens may be interchanged. Eye-level, built-in finder, the units of which may be interchanged to match lens. Smooth rotary shutter. Single frame exposure device. Spring motor with governor to provide uniform speeds. Five picture-taking speeds—16, 24, 32, 48 and 64 frames per second. Metal alloy body with smooth finish. Complete with built-in exposure guide. Carrying strap and complete instructions for use are included with camera.

★67 CMN 809T—\$131.20; plus Federal Excise Tax of \$12.30. Total price you pay. \$143.50

Ciné-Kodak Model E

② Relatively low-priced camera that will take good pictures for average requirements. Takes 50 or 100 ft. of black and white or color film. Two lenses available—see listings below. Enclosed view finder shows (a) picture being taken; (b) how much film given to it; (c) film remaining unexposed. Spring motor with three speeds—16, 32 and 64 frames per second. Exposure lever locks in position. Die cast metal case with Black crinkle finish. Exposure guide, strap and instructions are included. (Order Case Separately.)

—With fast $f/3.5$ lens. applicable to lens only. Total. NOT AVAILABLE

—With extra fast $f/1.9$ lens. Total you pay NOT AVAILABLE

—COMBINATION CASE. Leather. Holds Model E Camera, two film rolls and filters. NOT AVAILABLE

Ciné-Kodak Magazine Load

③ Model Sixteen-10. A fine, versatile, compact camera. Quick, easy magazine loading—you can change between black and white and color in middle of reel without film waste. Magazine holds 50 ft. Footage indicator on magazine shows unused film. Very fast 25mm. (1-in.) $f/1.9$ anastigmat focusing lens, interchangeable with 7 accessory lenses, including telephoto. Full vision, eye-level finder adjusts for fields of standard, accessory lenses. Spring motor—automatic shut-off for uniform exposure. Speeds: 16, 32, 64 frames per second. Button pulse under finger is scene length guide. Metal body covered with grained leather. Exposure guide, strap and instructions.

★67 CMN 800T—Without Case. \$120.00; plus Federal Excise Tax of \$10.98. Total. \$130.98

★67 CMN 801T—Camera with Vertical Combination leather case. \$135.00; plus \$10.98 Tax. Total. \$145.98

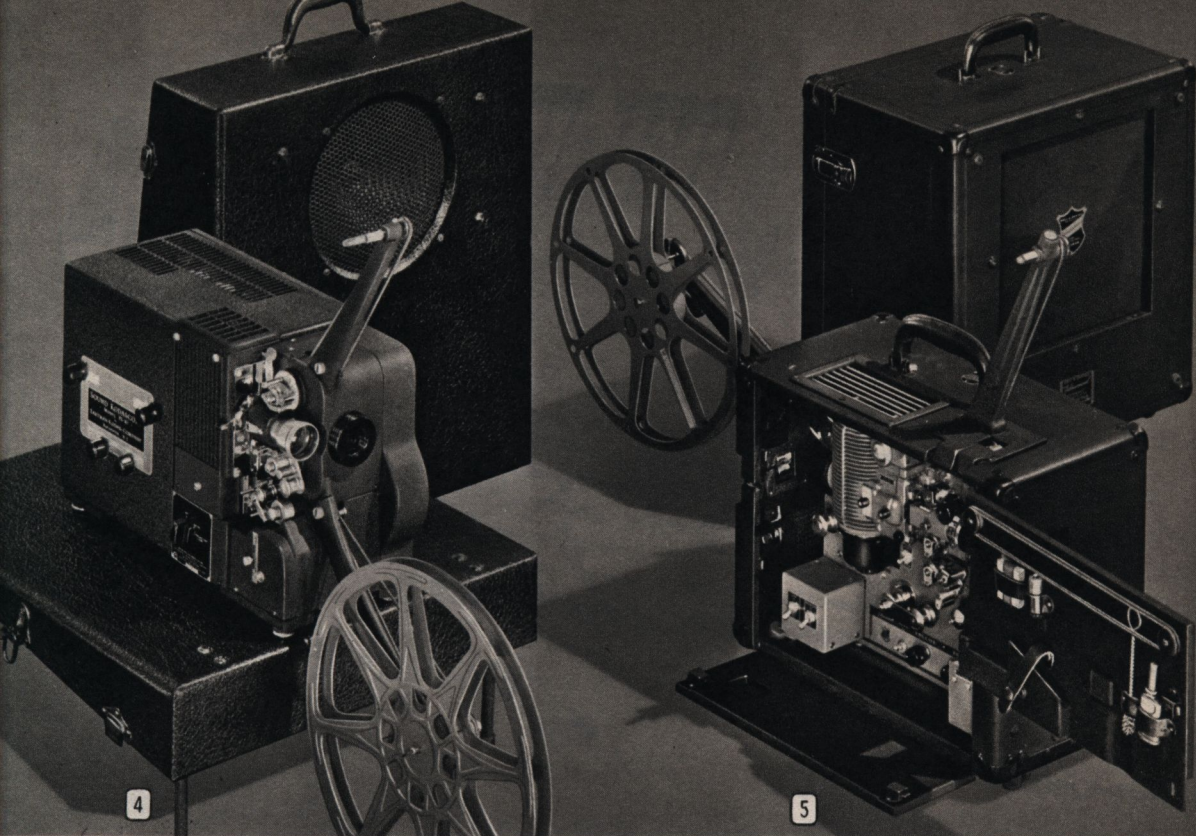
GE Mazda Long-Life Projector Lamps—All Mailed Postpaid

(Require AA-1 Priority, except 200-W. Form CMP-7 NOT applicable.)

★67 CM 3120T—State Make and Model of Projector and Size Lamp wanted.

100-Watt. T-8. 50c
150-Watt. T-10 Med. Pre-focus. . . \$1.30
200-Watt. T-10 Med. Pre-focus. . . 2.00

300-Watt. T-10 Med. Pre-focus. . . \$2.70
500-Watt. T-10 Med. Pre-focus. . . 3.50
750-Watt. T-12. 4.10



Eastman, Bell & Howell Sound Projectors

The 16mm. Sound-on-Film Projectors on this page are outstanding among portable sound projectors. To purchase either of these items you must accompany your order by a properly filled-in and signed CMP-7 Form—see Page 3 for complete information. You are eligible to buy either of these projectors if you need it in your

work. Either projector may be purchased for cash or on convenient Time Payments at the same price. See Page 3 for details, including both down and monthly payments. Either projector is mailed *Postpaid* from Chicago—allow extra time for delivery. Send your order to the nearest Warf Mail Order House.

Eastman Model FS 10-N Sound Kodascope

4 Gives clear, sharp pictures synchronized with sound. Takes 16mm. sound or silent film. Excellent for instruction or entertainment. Easy to carry and set up under wide variety of conditions. Takes 1600-ft. reel, providing a show of approximately 44 minutes' duration.

Equipped with fully corrected $f/1.6$ projection lens with 2-in. focal length. Brilliant illumination from 750-watt lamp. Amplifier provides fidelity sound control.

Shows pictures 30 by 40 in. at 15 ft. from screen; larger pictures at greater distance. Projector and speaker built into single two-part case. One section houses the 10-in., permanent magnet speaker. The other section, equipped with short legs, serves as projector platform.

Oil-floated flywheel provides unvarying movement where film is scanned for sound. Among other features of this fine projector are the following:

Threading light. Simplified threading arrangement. Pre-lubricated major bearings. Volume and tone controls. Fan-controlled ventilation. Speaker cable 40 ft. long. Extra exciter lamp. Oiling and splicing outfits. Accessible parts. For 110-120-volt, 60-cycle A.C. Complete instructions are included.

★67 CMN 960T—Complete (No tax on this item)...\$323.50

Use Projectors with Castle Film; Other Commercial Film; Your Own Movies

The projectors listed above give you a wide range of material in 16mm. film, both silent and sound. For selections of Castle Film, including Sound Edition, see Page 34 of this Catalog. There is a great variety of other commercially available film

Bell & Howell Model V Filmsound

5 Gives clear, sharp pictures synchronized with sound. Takes 16mm. sound or silent film. Widely used for both instruction and entertainment film. Easily transported and set up. Capacity, 2000 ft., providing show of approximately 55 minutes' duration.

Equipped with fully corrected $f/1.6$ projection lens with 2-in. focal length. Brilliant illumination from 750-watt lamp. Specially engineered, wide tone range amplifier.

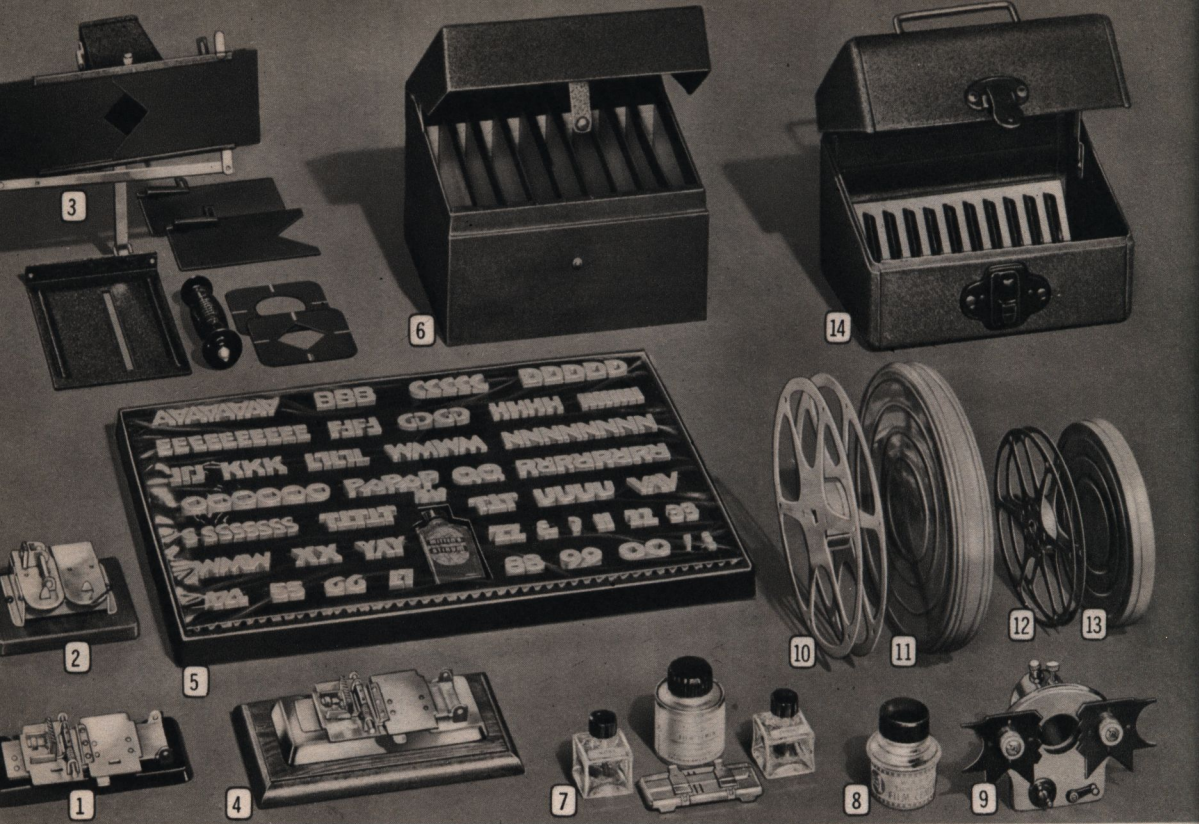
Shows pictures 30 by 40 in. at 15 ft. from screen. Larger at greater distance. In two cases—one housing the projector and the other with speaker unit. Speaker is 12-in. dynamic type. Full range tone control.

B&H Oscillatory stabilizer; balanced flywheel. Sound track scanning system with optical improvements for fidelity. Among other features are the following:

Threading light. Still picture clutch for projecting any frame as a still. Volume and tone controls. Improved fan cooling. Voltage of exciter lamp and photo-cell synchronized. Oiling and splicing outfits. Operating speeds, 24 and 16 frames per second. For 110-120-volt, 60-cycle A.C. Complete instructions are included.

★67 CMN 963T—Complete. (No tax on this item) ..\$437.67

that can be used on these projectors. And they can also be used to show 16mm. movies you have made yourself. You can include both projector and film in a Time Payment order—see Page 3 of this Catalog for complete details.



Movie Editing and Splicing Equipment,

1 FRANKLIN SPLICER. Standard Model. For splicing 8mm. or 16mm. silent and sound movie film. Convenient and time-saving—cuts and cements in one operation. Precision-set abrasive plate for dry emulsion scraping.
67 CM 1215—Ship. wt. 1 lb.\$3.89

2 BAIA SPLICER. For splicing 8mm. or 16mm. silent and sound film. Fast and accurate—cuts and cements in one simple operation. Automatic snap latches hold the trimming plate firmly in place during the cementing operation.
67 CM 1221T—Ship. wt. 1 lb. 6 oz.\$6.98

3 BESBEE EFFECTOGRAPH. 16 unusual effects for your home movies. Fits all 8mm. and 16mm. cameras. Nine different masks, ten different shutters, five-inch camera hook, automatic slide, tripod handle. Instructions.
67 CM 1225T—Ship. wt. 2 lbs.\$4.49

4 FRANKLIN SPLICER. Super Model. For splicing 8mm. or 16mm. silent or sound movie film. Heavy duty construction. Operates same as Standard. Durable chrome plated finish. Accurate 1 3/16-inch dry scraping plate. Entire splicer mounted firmly on wood base, 6 7/8 by 4 1/4 inches. Instructions.
67 CM 1216T—Ship. wt. 1 lb. 6 oz.\$6.45

5 MITTEN'S MOVIE TITLER OUTFIT. For professional appearing titles—neat, clean-cut, no fuzzy edges. Outfit consists of 150 white pinless letters and numerals 3/4 inch high. With 1 bottle of special adhesive.
67 CM 1222T—Shipping weight 3 lbs.\$4.29

LARGER MITTEN'S TITLER OUTFIT. 240 letters and numerals.
67 CM 1223T—Shipping weight 5 lbs.\$6.95

6 MOVIE FILM FILE. Pressed pasteboard, blue cloth binding. Convenient method of indexing and storing film. Size: 8 1/2 by 5 3/8 by 6 3/4 inches. Ship. wt. each, 2 lbs.
67 CM 1209T—Holds nine 8mm. reels or cans.\$1.39
67 CM 1210T—Holds seven 16mm. reels or cans. 1.69

7 EASTMAN JR. FILM SPLICING OUTFIT. Consists of Splicer that handles 8mm. and 16mm. silent or sound film; 2-oz. bottle of Cine-Kodak film cement; 2 convenient covered glass bottles labeled for water and cement.
67 CM 1214—Shipping weight 8 oz.95c

8 WARDS FILM CEMENT. Quick-acting—for splicing all movie film. Bottle fits all editing boards. Brush included.
67 CM 1211—1-oz. Bottle. Ship. wt. 6 oz.19c

9 BOOL'S CINE FADER. For all movie cameras. With it, you can make professional fades, white lap-dissolves and other interesting effects that will improve your home movies. Two leaves open or close in front of camera lens by a spring motor action. Gives 64 different effects. Fastens securely to lens mount, does not interfere with field of view.
—Instructions included. Postpaid.NOT AVAILABLE

REELS AND CANS. Spring steel. Reels fit all projectors. 16mm. sizes hold 400 ft. film; 8mm. 200 ft. Postpaid.

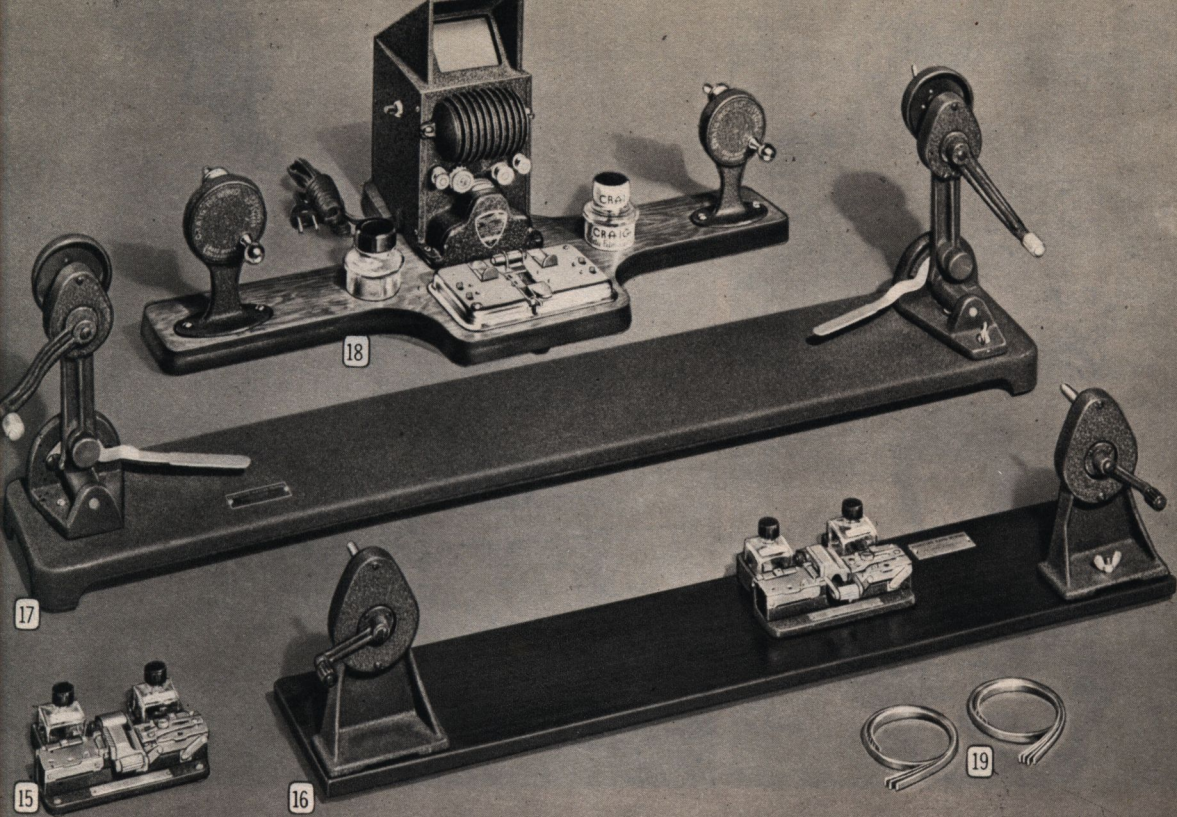
(10) 67 CM 1203—16mm. Reel. Ea. 45c; 3 for \$1.25; 6 for \$2.29
(11) 67 CM 1204—16mm. Can. Ea. 45c; 3 for 1.25; 6 for 2.29
(12) 67 CM 1200— 8mm. Reel. Ea. 35c; 3 for 1.00; 6 for 1.69
(13) 67 CM 1201— 8mm. Can. Ea. 35c; 3 for 1.00; 6 for 1.69
67 CM 1202—300-ft. 8mm. Revere Reel. Each.55c

14 FILM STORAGE CASES. All steel, welded seams. Dustproof.
8mm. Size for 200-ft. Reels and Cans

67 CM 1205—For 6 reels or cans. Ship. wt. 2 lbs.\$1.98
67 CM 1206—For 12 reels or cans. Ship. wt. 3 lbs. 2.69

16mm. Size for 400-ft. Reels or Cans
67 CM 1207—For 6 reels or cans. Wt. 3 lbs. 4 oz.\$2.19
67 CM 1208—For 12 reels or cans. Wt. 5 lbs. 2 oz. 3.49

Use Wards Time Payment Plan—see Page 3 for details



and Other Convenient Movie Accessories

15 KODASCOPE UNIVERSAL SPLICER. CMP-7 Form required—see Page 3. For cutting, splicing, and cementing 8mm. and 16mm. silent and sound film. Spring clip cover plates hold both film ends securely—make possible accurate scraping and positive splicing. Includes two bottles labeled for water and cement, and 2-oz. can of Kodak Cine Film Cement. With complete illustrated instructions.

★67 CM 1217T—Postpaid.....\$12.50

16 KODASCOPE REWIND AND SPLICER. CMP-7 Form required—see Page 3. For use with all 8mm. and 16mm. silent and sound movie film. Rewinds mounted on long board with attached splicer—accommodate reels up to 1600-foot size; equipped with brakes to provide even, uniform speed and avoid slack. Universal model, for 8mm. and 16mm. silent and sound film, makes quick, accurate, positive splices. Precision built for long and efficient service. Two labeled bottles included, one for water, one for cement, plus 2-oz. can of Kodak Cine Film Cement. Bottles have handy brushes attached to covers. Complete illustrated instructions for use.

★67 CM 1218T—Shipped Postpaid.....\$22.50

17 KODASCOPE MASTER REWIND. CMP-7 Form required—see Page 3. For use with 16mm. silent and sound film. Takes up to 1600-foot reels. Two rewinds mounted on metal base.

★67 CM 1219T—Shipped Postpaid.....\$30.00

18 CRAIG 16MM. PROJECTO-EDITOR. CMP-7 Form required—see Page 3. With the aid of this Editor, many an uninteresting collection of random shots can easily be transformed into smooth running sequences that you'll be proud to show as your handiwork.

New principle in design permits true-action editing—a smoothly animated method allowing careful inspection of brilliant, flickerless motion on its recessed miniature screen. The film may be wound through fast or slowly, and the action studied carefully. The exact frame to be cut may then be selected and marked.

Splicing is made easy by the conveniently placed Craig Senior splicer—requires only four simple operations, wetting film is not required. Equipped with cutter and dry scraper; permanent splices are unusually accurate.

Equipped with Craig Rewinds accommodating reels up to 2000-foot capacity—adjustable brake for tension and speed control, plus new type locking device on spindle. Bottle of Craig Film Cement and instructions included.

★67 CM 1224T—Postpaid.....\$59.95

19 CINE-KODAK COMBINATION FILM CLIPS. Use to fasten ends of film when spooled on reels, before storing in cans.

67 CM 1220—Postpaid. Per dozen.....75c

"T" MEANS NOT STOCKED IN ALL HOUSES

The letter "T" following a Catalog Number means that particular item is not carried in stock in all the Ward Mail Order Houses. Your order may be transferred for shipment. However, order in the usual way from your nearest Ward Mail Order House and allow postage from there. Also allow extra time for shipment. All restricted sale items, identified with a star (★) before the Catalog Number, are shipped from Factory—see Page 3 for information.

Ward Guarantee Satisfaction with every purchase, or your money back, including transportation you paid.

WARDS PAGE THIRTY-THREE

USE WARDS TIME PAYMENT PLAN

Get the most enjoyment out of your movie camera and projector—edit and title your home movies with the accessories described on these pages. Order them now—pay as you use. Many of these are sold on Terms with no extra charge for credit. It's easy to establish your credit at Wards. See Page 3 for table of terms and complete information.



Show Castle Films with Your Projector

How To Order: Choose from this wide assortment of nationally known Castle 8 and 16mm. black and white films of News, Travel, Sports, etc. For still other titles, write Wards nearest Mail Order House for a Castle Film Catalog and order films listed there from Wards. The films listed on these pages, except Sound Edition, are shipped at once from Chicago, Baltimore or Oakland. But send your order to nearest Ward Mail Order House. The Sound Edition and titles ordered from the Castle Film Catalog are shipped from New York, N.Y. Allow extra time for delivery.

For listings of Castle's "Seven Years' World History on Parade" see bottom of opposite page.

WORLD PARADE: See the world's wonders, right in your own home. Read How to Order, above.

No. 1. "HAWAII." The beach of Waikiki, picturesque Honolulu, exploding volcanoes, daring surf riders.

No. 4. "BRYCE-ZION-GRAND CANYON." Filming of Nature's most spectacular handicraft, millions of years in the making.

No. 5. "BANFF AND LAKE LOUISE." Magnificent Canadian Rockies filmed in all seasons of the year. Towering peaks, etc.

ADVENTURE PARADE: Man matches wits with untamed beasts of tropics and frozen North in some of these thrilling films, while others bring to you the amusing charm of forest dwellers. No. 10 gives you still another wilderness sequence, including both Little People and the jungle beasts among which they dwell. Varied entertainment. Be sure to read How to Order, at top of page.

No. 8. "THE CHIMP'S VACATION." A young chimp leaves the jungle, and explores the land of man . . . lots of comedy.

No. 9. "HERE COMES THE CIRCUS." Thrilling jumps, famous clowns, lions and tigers, death defying aerialist, side shows.

No. 10. "AFRICAN PYGMY THRILLS." Africa's tiny people menaced by man-eating crocodiles and pitted against the jungle.

No. 25. "THREE LITTLE BRUINS." Amusing and charming bears.

No. 26. "BEATTY'S ANIMAL THRILLS." Action with savage beasts.

WARDS PAGE THIRTY-FOUR

All mailed *Postpaid*. In ordering be sure to *State Catalog Number and Title and Number* of each film wanted.

67 CM 1058T—8mm. 50-ft. Headline Edition (3½ minutes).\$1.59

67 CM 1059T—8mm. 180-ft. Complete Edition (11 min.).... 5.35

67 CM 1060T—16mm. 100-ft. Headline Edition (3½ min.)... 2.59

67 CM 1061T—16mm. 360-ft. Complete Edition (11 min.)... 8.59

67 CM 1062F—16mm. 360-ft. Edition with Sound (11 min.) 16.95

NEWS PARADE. Actual war scenes showing America's fighting men in action. See How To Order, above.

No. 28. "Invasion of Fortress Europe and Rome Falls."

No. 30. "Camera Thrills of the War."

No. 29. "News Parade of 1944."

No. 22. "News Parade of 1943."

SPORTS PARADE. Champions in vivid action, filmed by expert cameramen. Read How to Order at top of page.

No. 27. "Ice Carnival." Fast and graceful action on skates.

No. 14. "Swimming and Diving Acts." Action and beauty.

No. 16. "Ride 'Em Cowboy." Thrills of a super rodeo.

No. 17. "Snow Thrills." Bob sleds and ice yachts in action.

No. 18. "Fishing Thrills."

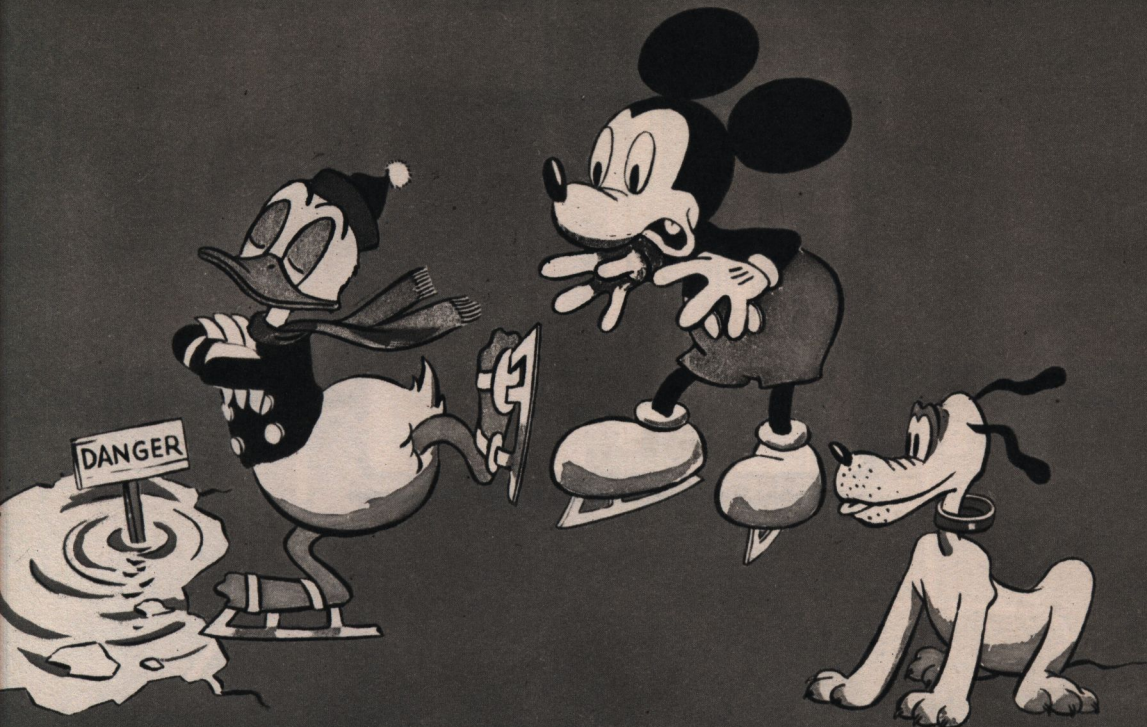
FUN CARTOONS. For young and old. Be sure to read How to Order, at top of page.

No. 31. "Little Black Sambo."

No. 32. "Old Mother Hubbard."

No. 33. "Mary's Little Lamb."

No. 34. "Big Bad Wolf."



Donald Duck and Mickey Mouse Movies

Here's fun on your screen with famous Hollywood Cartoons. Your favorite Disney cartoon characters—Mickey Mouse and Donald Duck go through their paces. Follow them through a series of riotous madcap adventures. Professionally edited like those you see in your neighborhood theater. For 8mm.

Donald Duck Films

DONALD DUCK—his trials and tribulations. Choice of 6 humorous subjects listed below:

Donald Duck's Outing. Orphans, Donald picnicking.

Ducking Out. No picnic meal for Donald.

Red Hot Bullets. Donald Duck on the Police Force.

The Buzz Saw Battle. Donald plus cops and robbers.

The Smoke Eater. No fun being a Fireman.

Trained Seals. Donald's seals go hungry at the circus.

67 CM 1050T—50-ft. 8mm. film. *State title wanted* \$1.50

67 CM 1052T—100-ft. 16mm. film. *State title wanted* 3.00

Donald Duck the Skater. He has his ups and downs.

Donald Duck's Mexican Romance. Donald's Senorita.

Donald Duck's Super Service. Plenty of excitement.

Donald Duck the Fireman. Thrills, chills and spills.

Donald Duck in the Flying Trapeze. Humorous acrobatics.

Donald Duck's Day Off. One trouble-free (?) day.

67 CM 1051T—100-ft. 8mm. film. *State title wanted* \$3.00

67 CM 1053T—200-ft. 16mm. film *State title wanted* 6.00

Castle Films—"Seven Years' World History on Parade"

SPECIAL OFFER. Here's an opportunity to own an authentic movie record of history in the making. All the most important highlights of 1937 to 1943 are included—seven reels of specially edited world news leading up to and including the present conflict between the Axis and United Nations. Add this dramatic presentation to your home movie library.

These films will make an interesting and explanatory background for the News Parade films of recent outstanding events of the War, listed on the opposite page. Show them

and 16mm. projectors. The 50-ft. 8mm. and 100-ft. 16mm. films run about 3½ minutes. The 100-ft. 8mm. and 200-ft. 16mm. films run about 7 minutes. Shipped Postpaid from Chicago, Baltimore or Oakland. Order from Wards Mail Order House nearest you. Use Wards Time Payment Plan; see Page 3.

Mickey Mouse Films

MICKEY MOUSE—Favorite cartoon character. Choice of animated subjects listed below:

The Gorilla Tamer. Mickey, Minnie, plus a gorilla.

Mickey's Kongo Killer. Mickey's robot boxer versus a gorilla.

Mickey's Big Night. Mickey and Minnie at a night club.

Horseplay. Mickey plus a horse spells a wild ride.

Mickey's Sky Battle. The flier worsts an air mail bandit.

Airplane Antics. Mickey the stunt pilot.

67 CM 1054T—50-ft. 8mm. film. *State title wanted* \$1.50

67 CM 1056T—100-ft. 16mm. film. *State title wanted* 3.00

Mickey's Six Shooter. A saga of the Wild West.

Mickey's Air Raid. A wrathful Mickey dodges bombs.

Mickey in High Speed. A funny race against time.

Mickey the Dog Catcher. Dogs don't appreciate Mickey.

Mickey Plays Papa. Mickey wasn't meant to be a nursemaid.

Mickey the Dizzy Pilot. Aerial acrobatics at their worst.

67 CM 1055T—100-ft. 8mm. film. *State title wanted* \$3.00

67 CM 1057T—200-ft. 16mm. film *State title wanted* 6.00

in sequence. Use Wards convenient Time Payment Plan to purchase the films you want—see Page 3 of this Catalog for information on down and monthly payments.

67 CM 1063T—HEADLINE EDITION. Seven 50-ft. 8mm. reels.

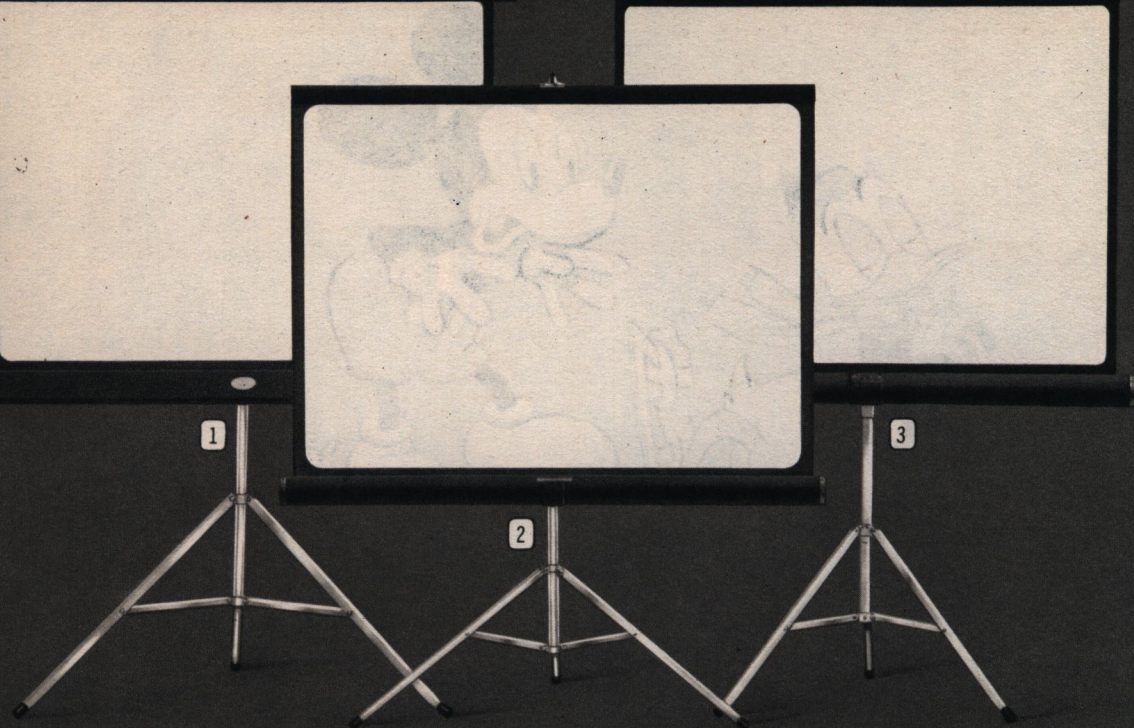
Shipping weight 2 lbs. 12 oz. \$9.95

67 CM 1064T—COMPLETE EDITION. Seven 180-ft. 8mm. reels.

Shipping weight 7 lbs. \$35.95

67 CM 1065T—HEADLINE EDITION. Seven 100-ft. 16mm. reels.

Shipping weight 4 lbs. \$17.50



Screens for Movie and Still Projection



Tripod—gives instant portability. Adjustable height. Made of steel.



Wire Back Support—portable use. Convenient in home, office, etc.



Bracket. For mounting screen on wall in classroom, store, etc.

Wards are now able to supply you with the nationally known Da-Lite Challenger, Versatol and Radiant Screens in addition to our own 3-way model. All four screens have uniform, true white glass beaded surfaces which give a higher percentage of brightness than other types. They retain their original whiteness and pliability longer—give maximum light brilliance without glare. The surfaces are neutral in character—makes them ideal for any type of picture projection. They are excellent for home use and for schools and offices. Recommended for color or black-and-white, movie or still, picture projection. All three screens are compact and convenient. They can be set up and taken down nearly anywhere with a minimum of time and effort.

Wards Three-Way Screen

- ① A highly reflective Screen for color or black-and-white movies and transparencies. Handy 3-way adjustments. (See small pictures at left.) Brilliant 30 by 40-in. glass-beaded surface.

Top support prevents screen sag. High tension spring rolls screen into black satin finished wood carrying case. Detachable tripod, rubber-tipped feet, folding legs. Lightweight. Tripod can be used as lighting stand. Shipping weight 12 pounds.

67 CM 1012M—Complete.....\$6.49

2-WAY SCREEN. Same Screen as above but with table support and hanging bracket only. No tripod.

67 CM 1013M—Ship. wt. 3 lbs. 8 oz.....\$5.95

New Da-Lite Versatol

- ② A convenient, dependable Tripod Screen. Self-contained unit. The Da-Lite glass-beaded fabric screen surface stays clear—brings out the best in color or black-and-white movies or transparencies. Screen surface adjustable to any picture height. Self-adjusting tripod legs lock in position. Black dustproof case. End caps and tripod have rust-resistant finish. Lightweight. Offered in 3 sizes. *Postpaid.*

67 CM 1000M—Size 30 by 40 inches.....\$7.50

67 CM 1001M—Size 40 by 40 inches.....9.00

67 CM 1002M—Size 37 by 50 inches.....10.00

Da-Lite De Luxe Challenger

- ③ Nationally known, highest quality screen. Uniform, non-shatter glass beaded surface is ideal for color or black-and-white, movie or still projections. Screen will not warp or fade. The beaded surface will remain pliable and retain its whiteness through long service. This screen is more heavily constructed than the Da-Lite Versatol listed at the left. A tension spring rolls screen away neatly into a black dustproof carrying case. Screen, tripod and case are attached together to make one compact unit. Convenient, easy to use—can be set up anywhere. Screen height is adjustable to any picture size. With handle for carrying. *Postpaid.*

67 CM 1003MT—Size 30 by 40 inches.....\$10.00

Radiant Screens

Not illustrated. Model DS De Luxe. Glass beaded surface. Complete with attached tripod, black dustproof carrying case. *Postpaid.*

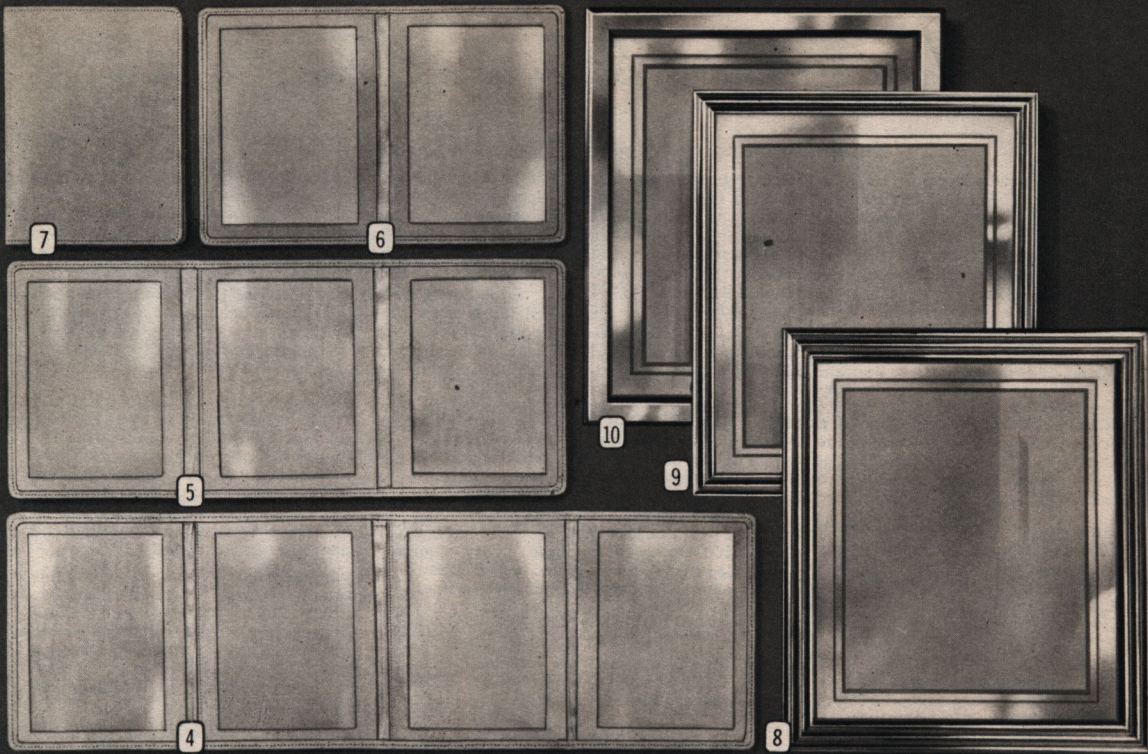
67 CM 1008T—Size 36 by 48 inches.....\$17.50

67 CM 1009T—Size 40 by 40 inches.....16.50

67 CM 1010T—Size 48 by 48 inches.....20.00

Letter "T" following Catalog Number means merchandise may be shipped from another Ward Mail Order House. Order and allow postage from Wards nearest Mail Order House. See Page 3.

WARDS GUARANTEE OF SATISFACTION. Wards guarantee complete satisfaction or your money will be refunded to you. If you are not satisfied with the merchandise you receive, you may return it to us and we will promptly refund all you have paid including any transportation charges.



Frames, Folders for Your Prized Pictures

Wards Finest Leather Frames in Single or Multiple Units

(4) to (7) Add to the charm of your favorite photographs with these new, smartly designed Saddle Leather frames. The frames come in four styles of folders—single, and 2, 3 or 4 frames of equal size. If you have more than one photograph of a person or if you have a series of favorite photographs that you want to keep together, these frames are just what you want. They come in sizes that will fit either a snapshot or studio portrait—can be used to stand on desk, table or dresser. (The smaller sizes can be carried conveniently in handbag or pocket.) They are

attractively lined with smooth, satin-finish cloth and are neatly and strongly stitched. The windows are of a clear, non-breakable plastic. In picture (7) the single-frame folder is shown closed. Multiple-frame folders (pictured open) also close in similar manner, with attractive leather outside cover.

If you have a gift problem, these frames will prove an excellent solution. Give them with or without photographs. Individually boxed. Be sure to state Catalog number, size and number of frames wanted (Single, Double, Triple or Quadruple).

Catalog Number	Opening Size In.	(4) QUADRUPLE Wt. Price	(5) TRIPLE Wt. Price	(6) DOUBLE Wt. Price	(7) SINGLE Wt. Price
67 CM 6103T	2¼ by 3¼	5 oz. \$2.29	4 oz. \$1.69	3 oz. 98c	3 oz. 89c
67 CM 6104T	3¼ by 4¼	6 oz. 3.19	5 oz. 2.29	4 oz. \$1.39	4 oz. \$1.29
67 CM 6105T	4 by 5	7 oz. 3.59	6 oz. 2.69	5 oz. 1.79	5 oz. 1.69
67 CM 6106T	4 by 6	8 oz. 4.49	7 oz. 3.39	6 oz. 2.29	6 oz. 2.19
67 CM 6107T	5 by 7	9 oz. 6.29	8 oz. 4.49	7 oz. 2.69	7 oz. 2.59

Buy Photo Supplies on Wards Convenient Time Payment Plan

You may purchase all your Photographic Supplies and Accessories on Wards Time Payment Plan. Combine all your needs into one Time Payment Order, and pay in regular, small monthly payments. An order consisting entirely of items priced under \$10 requires only 10% Down Payment. (Minimum order is \$10.) Those items priced at \$10 or over, require one-third of total price as Down Payment. Take advantage of this eco-

nomical and convenient way of purchasing all your photographic needs. It's easy to establish your credit at Wards—see Page 3 of this catalog for complete information and details of Wards Time Payment Plan. You can use your Credit at Wards to buy anything in this Catalog and in the big General Catalog. Items from both Catalogs can be included in a single Time Payment Order.

Metal Photo Frames

(8) to (10) Enhance your favorite photographs with these simple, yet modernly designed attractive frames.

(8) Chrome plated metal 1-in. molding over wood frame. Triple groove design. One-inch mirror stripe at borders of glass adds finished touch to photograph. Size overall 12¾ by 10¾ in. For 8 by 10-in. prints. Actual opening 7½ by 9½ in. Suede-like finish on easel type back.

67 CM 6109T—Ship. wt. 2 lbs.

Was \$2.29, now reduced to \$1.59

Same as above, except wider 1¼-inch molding. Triple groove design with 1-inch mirror stripe at borders of glass. For 8 by 10-inch prints. Suede-like finish on easel type back.

67 CM 6111T—Ship. wt. 2 lbs.

Was \$2.98, now reduced to \$1.79

(9) Chrome plated metal ¾-in. molding over wood frame. Molding has double groove design. Glass has 1-in. mirror stripe around borders. Size overall 13½ by 11¾ in. Takes 8 by 10-in. prints. Actual opening size 7½ by 9½ in. Suede-like finish on easel type back.

67 CM 6110T—Ship. wt. 2 lbs.

Was \$2.29, now reduced to \$1.59

(10) Chrome plated 1-inch metal molding rounded over a wood frame. For framing 8 by 10-inch prints. Actual opening size 7½ by 9½ inches. Size overall, 11 by 13 inches. Glass has 1-inch mirror stripe at borders. Suede-like finish on the easel type back.

67 CM 6108T—Ship. wt. 2 lbs.

Was \$1.98, now reduced to \$1.29

Show Your Pictures in a Fine Album

Krown-Kraft Albums of Distinction, Bound in Exquisite Leathers

Your prints, whether they be salon quality enlargements, or snapshots of your family, friends, vacation trips and other memorable events, grow more interesting and valuable as time goes by—they deserve to be mounted in a fine Album that shows them to best advantage and keeps them safely and conveniently filed. Then too, if you are like most photographers, you have a box or two of fine prints packed away that could be mounted up properly and shown with pride.

The Albums pictured in three sizes at top of opposite page are Wards finest. They feature beautiful selected leathers and excellent craftsmanship. In Spiral and Edition style book bind-

ings that hold pages securely and always keep albums looking neat and trim. Attractive hand tooled, gold leafed designs on their covers add a final touch of distinction. Finely styled in every respect, these albums will make attractive, pleasing additions to your library, or ideal gifts for anyone, especially photography fans.

Each has 50 heavy paper leaves (100 pages for mounting pictures) that provide proper backing for even double weight prints. Mount with dry tissue, rubber cement or art corners. See listings below for designs, sizes, colors, leathers. Individually boxed. All Mailed Postpaid.

HINGE DESIGN. Pictured first at right. Available in 3 sizes. Ancient hinge design hand tooled and gold leafed on cover. Plastic lay-flat spiral type binding. 100 black paper pages for pictures.

NATURAL TAN COLOR LEATHER ALBUMS.
67 CM 6010T—State size on order.
Book Shelf Size. 5 by 7 in. \$4.69
Table Size. 8 by 10 in. 7.98
Library Size. 11 by 14 in. 12.75

SADDLE BROWN LEATHER ALBUMS.
67 CM 6011T—State size on order.
Book Shelf Size. 5 by 7 in. \$4.69
Table Size. 8 by 10 in. 7.98
Library Size. 11 by 14 in. 12.75

REDWOOD COLOR LEATHER ALBUMS.
67 CM 6012T—State size on order.
Book Shelf Size. 5 by 7 in. \$4.69
Table Size. 8 by 10 in. 7.98
Library Size. 11 by 14 in. 12.75

PANEL DESIGN. Pictured second at right. Three Sizes: 5 by 7 in.; 8 by 10 in.; 11 by 14 in. Panel design hand tooled and gold leafed on cover. Edition regular book style binding—pages are held securely; book stays neat and trim. Fifty heavy gray paper leaves; 100 pages for pictures. Every other leaf perforated—remove to compensate for thickness of mounted prints.

BROWN ALLIGATOR-GRAINED LEATHER.
67 CM 6013T—State size on order.
Book Shelf Size. 5 by 7 in. \$6.50
Table Size. 8 by 10 in. 10.00
Library Size. 11 by 14 in. 15.00

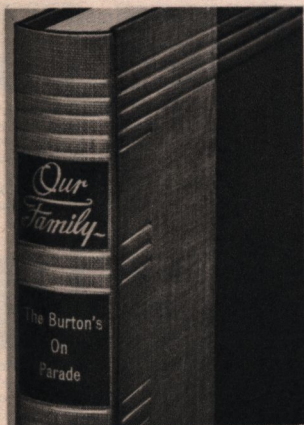
REDWOOD COLOR SMOOTH LEATHER.
67 CM 6014T—State size on order.
Book Shelf Size. 5 by 7 in. \$6.50
Table Size. 8 by 10 in. 10.00
Library Size. 11 by 14 in. 15.00

INTRICATE DESIGN. Pictured third at right. Three Sizes: 5 by 7 in.; 8 by 10 in.; 11 by 14 in. Elaborate design hand tooled and gold leafed on padded leather cover. Edition bound—regular book style. Pages held securely. Albums retain trim, neat appearance. Fifty Black paper leaves; 100 pages for pictures.

Every other leaf perforated—removable to compensate for thickness of mounted print and avoid bulkiness when album is filled. Make ideal gifts for camera fans. Include one of these fine leather albums in your Time Payment Order—see Page 3 for information on down and monthly payments, etc.

REDWOOD COLOR SMOOTH LEATHER ONLY.
67 CM 6015T—State size on order.
Book Shelf Size. 5 by 7 in. \$7.50
Table Size. 8 by 10 in. 12.50
Library Size. 11 by 14 in. 18.95

Photo Record Books—With Your Own Gold Leafed Individual Titles



Develop a complete, classified library of the subjects you photograph. These books have all the features of a Photo Album, Record Book and Diary all in one volume. Tastefully bound in durable Buckram—special permanent binding permits book to lie flat. Backbone of book has space provided for mounting your selection of one standard title plus your own personalized title. All titles are 23-karat gold leaf stamped on die cut bookbinder's leather, gummed on back for permanent mount.

Each volume has a self-explanatory order blank and postpaid envelope with which you may order your own personalized title and one standard title direct from Factory. Cost of titles is included in original book price. Standard titles include the following: My Book; Our Book; Our Home; Navy; Army; Marine; Our Trip; My Trip; Our Wedding; Our Children. Personalized titles you write yourself, consisting of 3 lines or less of not more

than 10 characters each. (See at left.)

Embossed cover has space in which you can wet-mount an 8 by 10-in. single weight print characteristic of book's contents. Each book has 104 pages for mounting prints up to 8 by 10 in., plus 14 patented glued hinges for mounting 14 double weight or 28 single weight 10 by 12-in. enlargements as permanent pages. Eleven pages are provided for personal notes, autographs, age of subjects, time of photography, etc. Stubs are bound in throughout the book to prevent completed book from bulging. Handy pocket on inside back cover for keeping loose prints.

Each book is encased in a durable protective jacket. Choice of three colors: Two-tone Blue; Two-tone Green; Two-tone Brown (pictured second row from bottom, opposite page). Postpaid.

67 CM 6000T—State color wanted... \$4.50
Start a library now, save on quantity order. Any 3 Record Books. \$11.95

Art Corners

Mount your prints neatly and quickly with these easy-to-use corners. Attractive designs—pictured below. Gummed backs hold prints firmly in album.

ENGEL ART CORNERS. Pictured at left below. Red or Black.
67 CM 6403—Ship. wt. 3 oz. State color. 300 for. 22c

NU-ACE CORNERS. Pictured at right below. Black or white. State color.
67 CM 6404—
Shipping weight 3 ounces.
300 for. 27c



Saddle Leather String Tie and Fotofolio Albums

SADDLE LEATHER (Pictured lower left, opp. page.) Flexible cover. Fifty heavy paper leaves; 100 pages for mounting. String tie.

67 CM 6008—7 by 10 in. Ship. wt. 1 lb. 12 oz. (Pictured)..... \$2.49
67 CM 6009—10 by 12 in. Ship. wt. 3 lbs. \$3.75

NEWAY GUMMED CLOTH HINGES. 2 3/4 in. wide.
67 CM 6405—Postpaid.
Pkg. of 25, 10c; 4 for 36c

RANGEFINDER FOTOFOLIO. Artificial leather padded covers. Red, Green, Brown or Black. Holds 224 snapshots on gummed hinges. Postpaid.

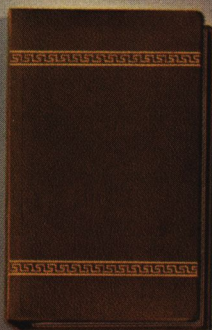
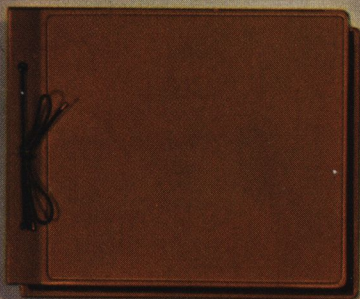
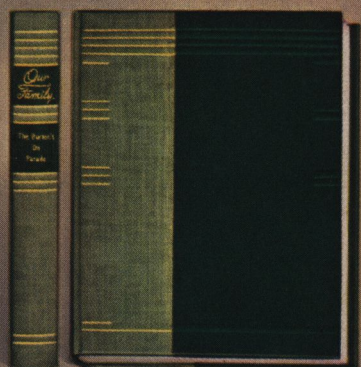
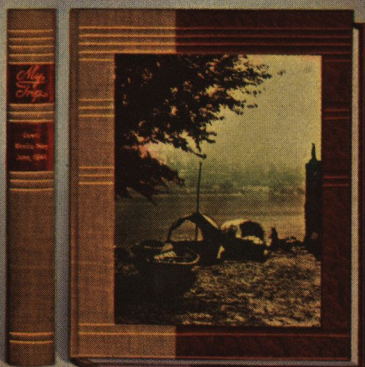
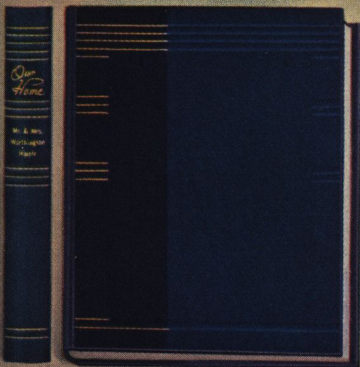
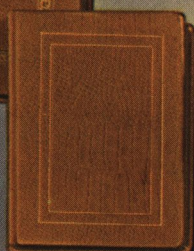
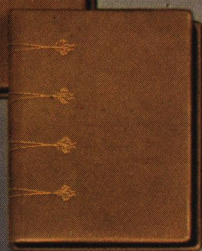
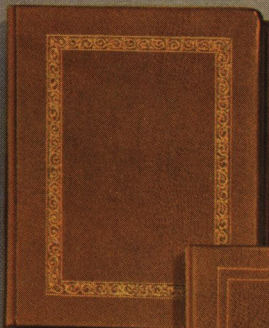
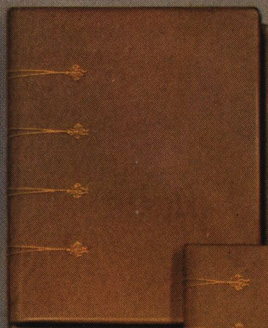
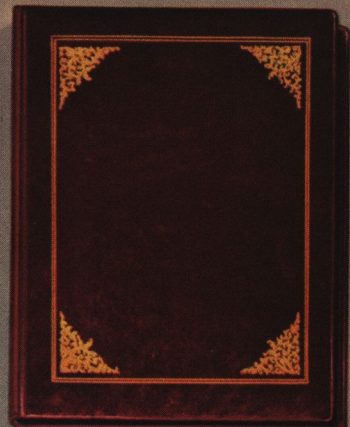
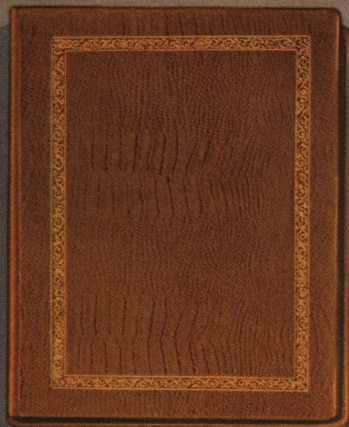
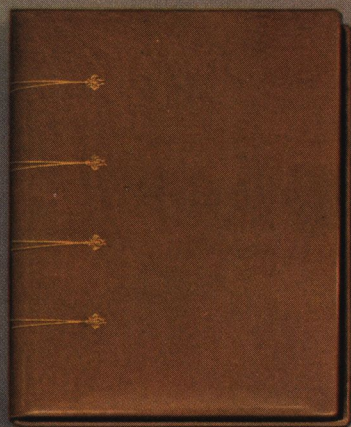
67 CM 6018T—State color. \$2.69
67 CM 6020T—Black Seal-grained. For 5x7-in. prints. \$2.98
67 CM 6019T—Black Seal-grained—8x10-in. prints. \$3.39

CONTACT FOTOFOLIO. (Not Pictured.) Bound with leather-like "Kivar." Holds 224 prints on gummed hinges. State Brown or Black.
67 CM 6022T—Postpaid. \$2.29

DE LUXE FOTOFOLIO. Art. leather Army Khaki or Navy Blue front. For 224 snaps. State color; name to be gold stamped.
67 CM 6021ET—Postpaid. \$2.69

FOTOFOLIO SET. Artificial leather Khaki front has Army or Navy design. State choice.
67 CM 6017T—2 albums—hold 56 pictures ea. Postpaid. \$1.00

"PROJECTOR" FOTOFOLIO. Imitation leather bound. Holds 192 prints. 25 gummed cloth hinges. State Black or Brown.
67 CM 6016T—Postpaid. \$1.00





Order color prints through Wardway

Now you can order beautiful, lasting Kodacolor Prints and Minicolor Enlargements easily and conveniently—by mail—through Wardway Photo Service, Park Ridge, Ill., authorized Eastman Kodak Co. dealer. Kodacolor and Minicolor prints are fully described below—pictured above. Allow about 4 weeks for completion of each order (same time as required by most dealers). Send negatives or transparencies to Wardway, Park Ridge, Ill. . . not to Ward Mail Order Houses. When mailing protect them with stiff cardboard and include your name and return address.

KODACOLOR PRINTS. Glossy full color prints on paper, made from Kodacolor negatives by Eastman Kodak. All prints are $2\frac{7}{8}$ in. wide. Length varies depending upon proportions of picture size of film (see table). Send your Kodacolor roll film or negatives to Wardway Photo Service, Park Ridge, Ill. Allow about 4 weeks. Minimum charge per order \$1.00. State number of prints wanted from each negative. Each print,40c

Neg. Size	Print Size	Neg. Size	Print Size
127	$2\frac{7}{8} \times 4\frac{1}{2}$	122	$2\frac{7}{8} \times 5\frac{1}{8}$
620	$2\frac{7}{8} \times 4\frac{3}{16}$	$1\frac{5}{8} \times 1\frac{5}{8}$	$2\frac{7}{8} \times 2\frac{7}{8}$
120	$2\frac{7}{8} \times 4\frac{3}{16}$	$2\frac{1}{4} \times 2\frac{1}{4}$	$2\frac{7}{8} \times 2\frac{7}{8}$
616	$2\frac{7}{8} \times 5$	Half 127	$2\frac{7}{8} \times 3\frac{13}{16}$
116	$2\frac{7}{8} \times 5$	Half 620	$2\frac{7}{8} \times 4$

MINICOLOR PRINTS. Full color enlargements from miniature 35mm. and Bantam Kodachrome transparencies. Prints have a smooth, durable glossy finish. Available in two standard sizes. The 2X enlargement is about $2\frac{1}{4}$ by $3\frac{1}{4}$ in., just right for carrying in wallet or mounting in album, or frame. The 5X size is about 5 by $7\frac{1}{2}$, comes mounted horizontally or vertically (depending on your transparency) in matte folder (see large picture above). Any clear, colorful transparency will make an excellent minicolor print. Send transparencies, protected for mailing, to Wardway Photo Service, Park Ridge, Ill. Allow about 4 weeks time. Minimum charge per order \$1.00. State size and number of enlargements wanted.

2X Minicolor Print, Each	75c
5X Minicolor Print, Each	\$3.50