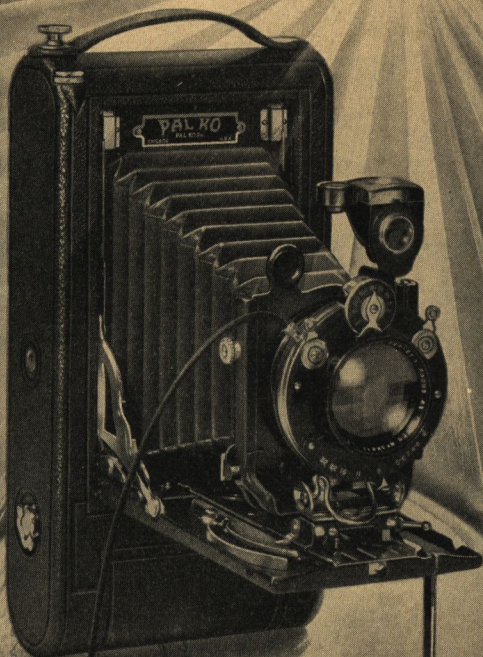


PALKO



**GROUND GLASS FOCUSING
ROLL FILM CAMERA**

**INSTRUCTIONS
FOR OPERATING
3-A PALKO CAMERA**

All the illustrated directions for operating 3-A "PAL KO" Camera can be performed very easily and rapidly when thoroughly understood.

The illustrations ALONE present clearly and easily understood pictures of the various camera operations.

Operating Instructions

Do not attempt to operate "PAL KO" Camera until you have read the instructions carefully and thoroughly.

When making 3-A or full size exposure, the negative will include all that is seen on the Ground Glass.

Two thirds size exposures will contain the view as seen between the dash lines on the Ground Glass marked $\frac{2}{3}$.

One third size exposures will be limited to the dotted lines marked $\frac{1}{3}$.

When focusing "PAL KO" Camera without a tripod, **select a fixed point near you (for example—the tip of your own shoe) to gauge with it the rear or front of the Camera Case by an imaginary vertical or horizontal line, forming a square angle to the line leading from the lens to the focused object. Then, after getting the focusing on the Ground Glass clear and in the right proportion, and setting your required lens speed and the light aperture stop, put your Camera back in line with the gauging point again, and, with the focused object well-centralized in the View Finder, make the exposure.**

The correctly focused object appears on the Ground Glass sharp and brilliant.

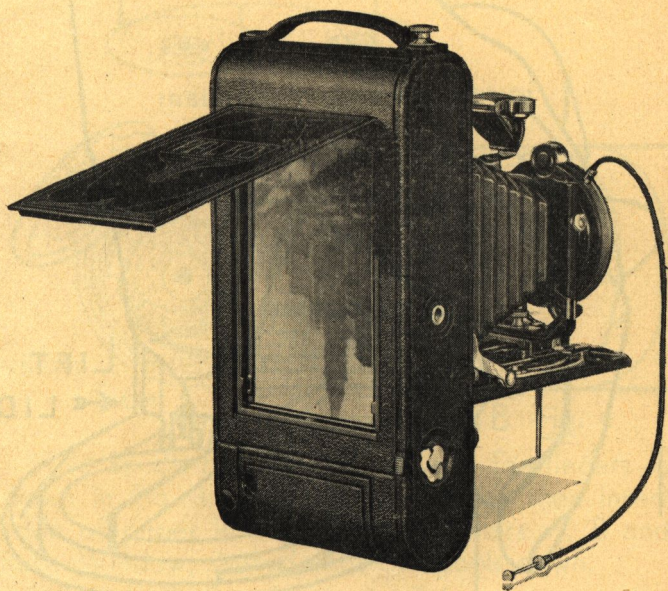
Sometimes, under conditions when the light is directly on the Ground Glass and interferes with fo-

cusing, a **small piece of thin black cloth**, put over the rear of the Camera, **will prevent it.**

Push **slowly** down the Shifting Rod (after making the exposure) giving the film a chance to wind tightly around the empty spool (see Fig. 12).

All "PAL KO" Lens Combinations, which constitute the standard optical equipment of the various 3-A "PAL KO" Camera Models, **are perfectly and easily interchangeable.**

We can furnish an inexpensive focusing hood if desired.



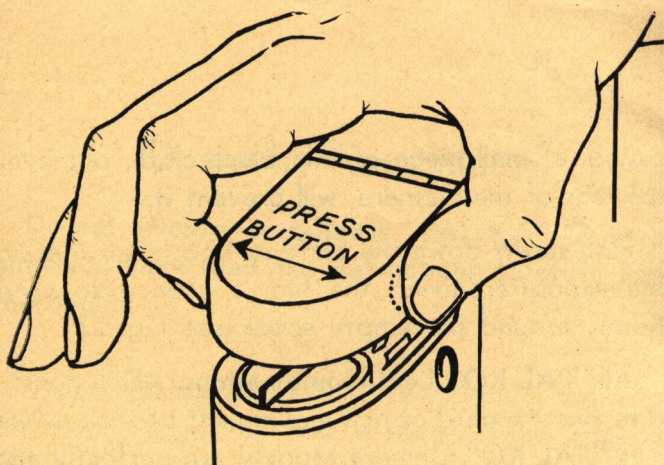


Fig. 1

To load the film into "PAL KO" Camera, press two buttons on both sides of loading door and open.

NOTE: It is advisable to have the camera folded before attempting to load it.

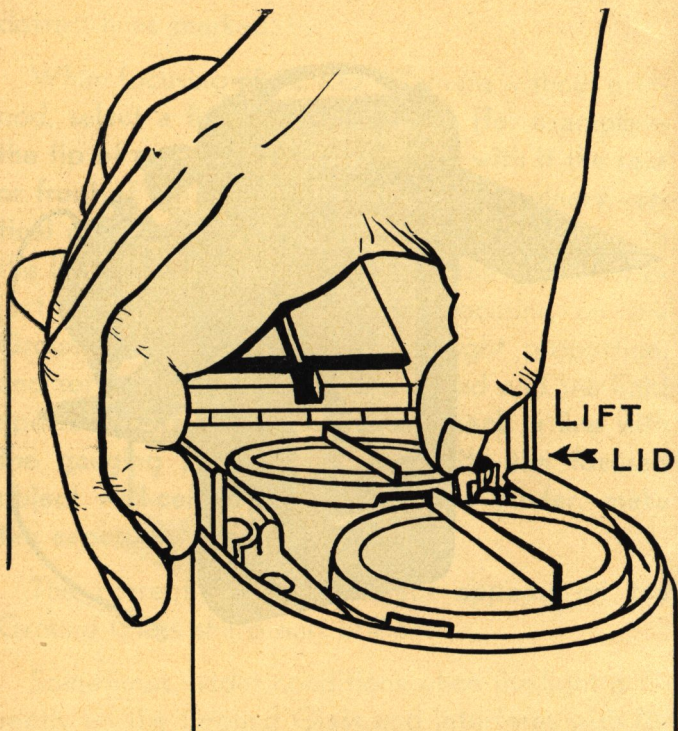


Fig. 2

Open Spool Holder Lids by inserting thumb nail between Catch and Rim and lift up.

NOTE: Spool Holder Lids must always be shut down before attempting to close loading door.

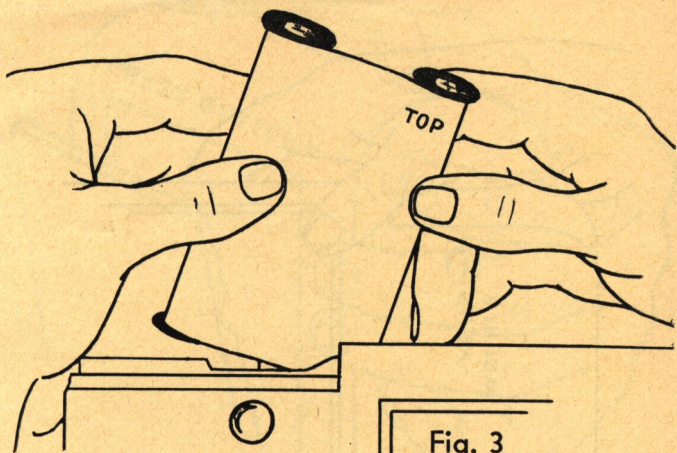
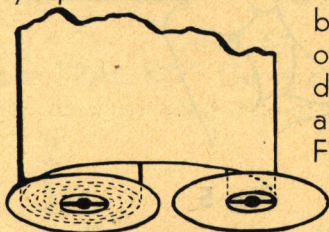


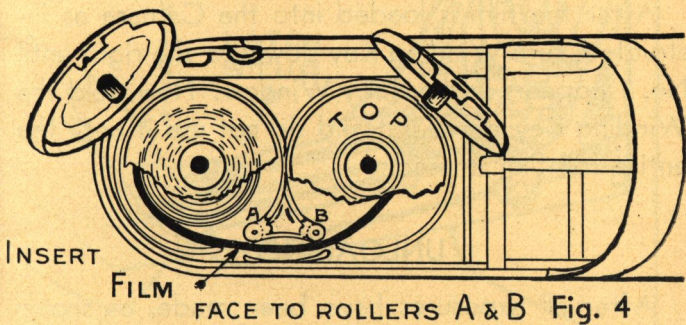
Fig. 3

To load "PAL KO" Camera with Roll Film, insert Tapered End of Paper from Roll Film through slot on Empty Spool and wind about three turns with



both slotted ends of Spools turned down in a position as illustrated in Fig. 4.

INSERT SLOTTED ENDS **DOWN**



FACE TO ROLLERS A & B Fig. 4

Hold Spools between thumbs and forefingers as shown in Fig. 3 (to avoid unwinding), then insert edge of paper in slot between Rollers A, B and Ruby Window; slotted ends of Spools down.

When both Spools are in Tubes, engage the Empty Spool on the Slot first, then give the Spool with the Film a turn to the right until the slot is engaged; the top ends of Spools now are just below the edge of Tubes.

Next close the Spool Holder Lids and the Loading Door, and turn Winding Key until it engages with the empty or Receiving Spool. See Fig. 5.

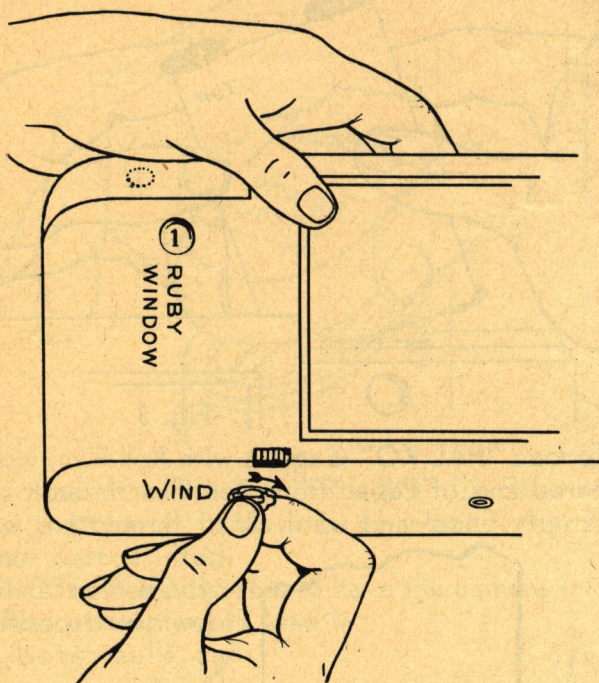


Fig. 5

After the film is loaded into the Camera as instructed, turn Winding Key slowly to the right until No. 1 appears in the Ruby Window. Now, fold the Winding Key down flat and do not use it until the entire roll film is used.

UNLOADING

After all exposures have been made, as shown on the Recording Dial, **finish the winding of film paper around exposed film with Winding Key**; then open Loading Door and Spool Holder Lids, and remove the film with forefinger or any way that is found most convenient without bending or twisting the Camera parts out of shape.

ATTENTION: Sometimes the sealing sticker is left in the tube after the film has been removed; the Sealing Sticker must be taken out of the Spool Holder Tube.

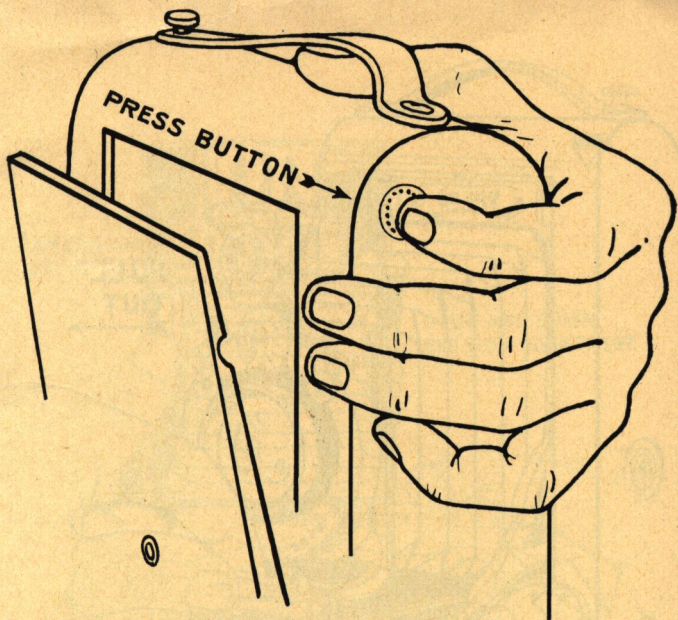


Fig. 6

To open "PAL KO" Camera, press Button with forefinger as illustrated above.

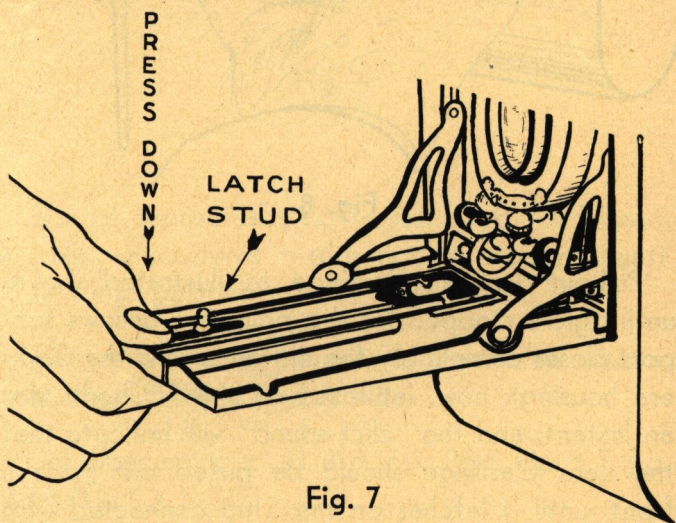


Fig. 7

Press down Front End of Camera Bed until it locks.

NOTE: In closing the Camera Bed, do not attempt to push Braces back before the Lens Carriage and Bellows Support are all the way in the Camera Housing—a Safety Device is supplied to prevent this.

The Lens should be placed central on the carriage and Lens-Holding Standard before returning it into the housing.

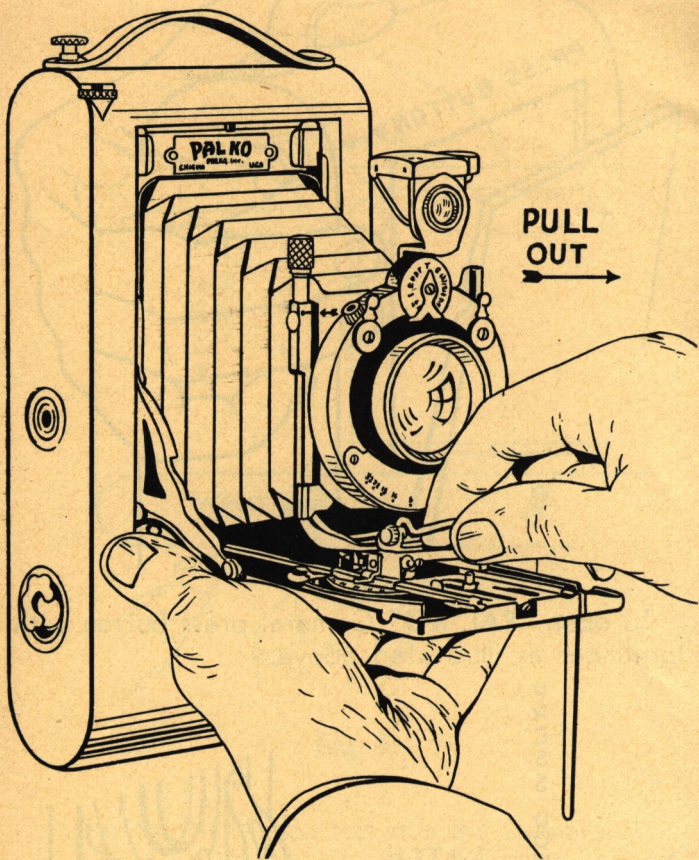


Fig. 8

Pull-out the Lens Carriage, as illustrated above, until rigidly stopped (at this point the bellows support closes completely the entrance into the Camera housing); now, let loose on the "Pull-out" for an instant, and the "click-sound" will indicate that the Lens Carriage should be pulled out (to the front) until it latches on the Stud connected with Focusing Lever.

ATTENTION! Do not push-in the Lens Carriage with the Shifting Rod out or the Ground Glass Door open!

NOTE: Tripod Sockets in "PAL KO" Camera will accommodate Tripod Screws $\frac{3}{16}$ " long only. If Tripod Screw is longer, use a washer or cut off the screw to $\frac{3}{16}$ ".

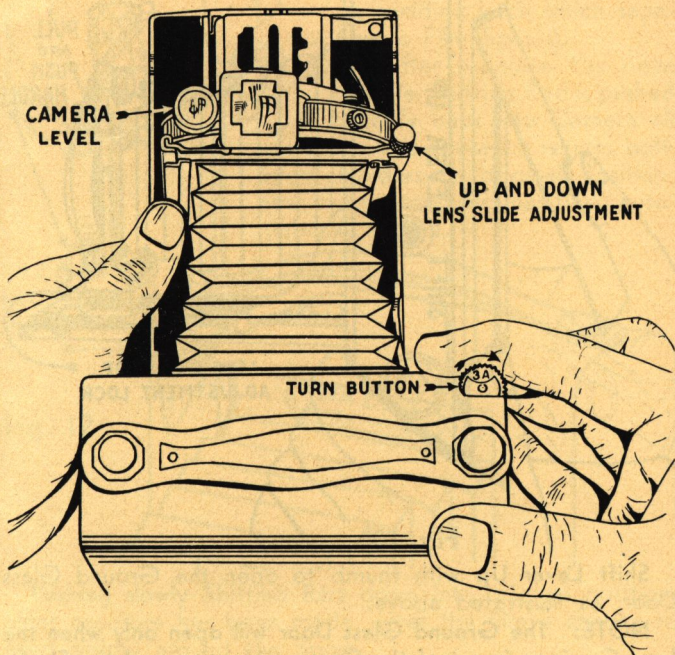


Fig. 9

Size of exposures is controlled by knurled Spacing Disc which turns in direction of the arrow until it sets into position with a "click-sound."

Turn with the forefinger, as illustrated above, **only when Shifting Rod is in!**

Set Spacing Disc at 3-A for Post Card Exposures $3\frac{1}{4}''$ x $5\frac{1}{2}''$.

Same rule applies to $\frac{2}{3}$ and $\frac{1}{3}$ of Post Card size exposures.

NOTE: Make sure and see that the figure, indicating the picture size, appears central in opening after the "click-sound," before operating the Shifting Rod to bring up the Film into a position for an exposure.

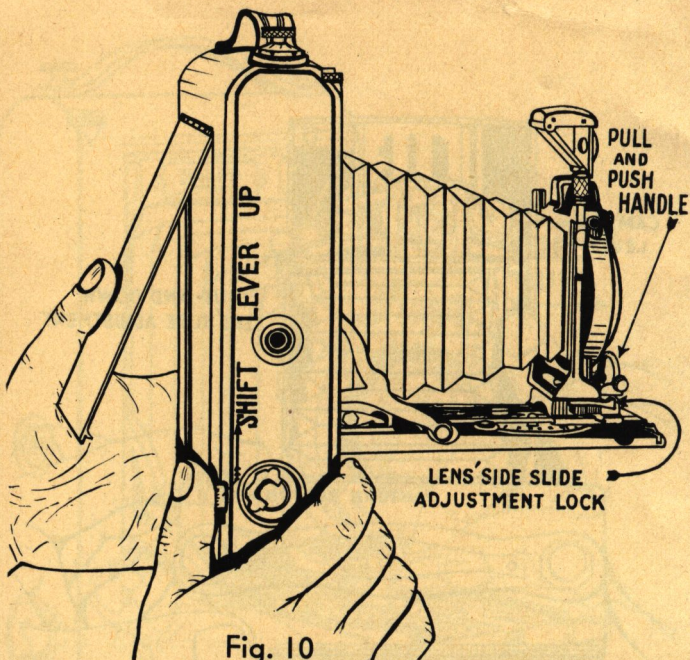


Fig. 10

Shift Lever Up with thumb to open the Ground Glass Door, as illustrated above.

NOTE: The Ground Glass Door will open only when the Lens Carriage is out of the Camera Housing and the Shifting Rod is down in the Camera.

Do not press or force hard upon the Ground Glass with fingers or cleaning cloth—any distortion or bending of the Ground Glass Frame will put it out of alignment with the lens, which will result in incorrect focusing.

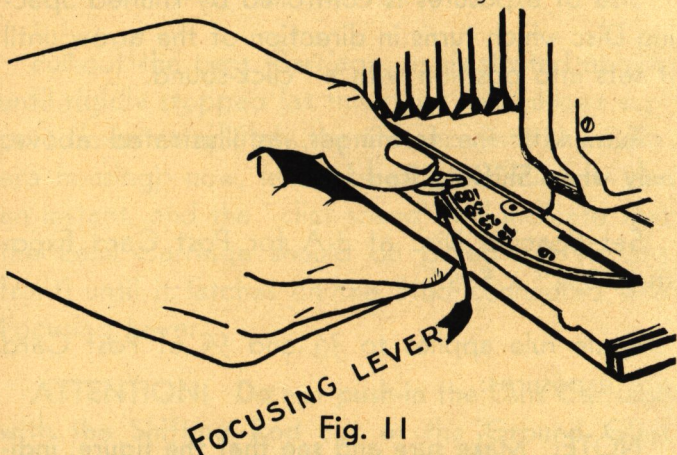


Fig. 11

When focusing objects at less than 100 ft. range, press Center Button on Focusing Lever with thumb of the right hand, as illustrated above, and push forward to any distance required.

NOTE: The Precision Focusing Scale, which can always be checked over and reset, is on the opposite side of the Camera Bed.



To bring film into a position ready for exposure, **pull-out** the Shifting Rod until it stops rigid (you first pull past a yielding latch which separates Film Spools).

After exposure has been made, Shifting Rod is **pushed slowly** back into Camera all way down; this operation returns both Spool Holders to original position; now, the exposed film has been automatically wound.

SIZE OF PICTURE INDICATOR



Fig. 12

Pushing slowly Shifting Rod down into original position, after exposure has been made, gives the film a chance to wind tightly around the Spool.

EXPOSURE RECORDER
2

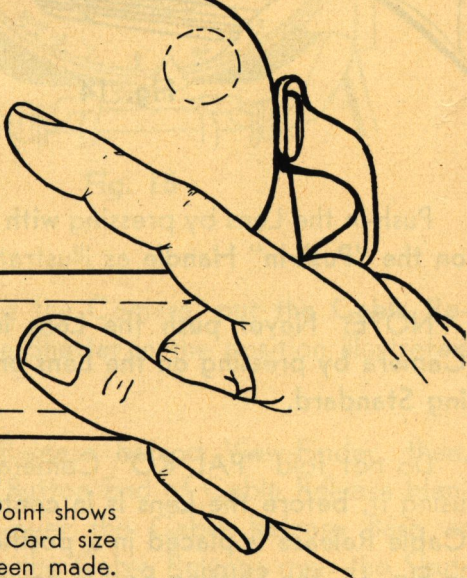


Fig. 13

The Indicating Point shows here that 2 Post Card size exposures have been made.

If the Indicating Point is in the direction of a line spaced on Indicating Wheel next to "2", that will show the equivalent of $2\frac{1}{3}$ Post Card size exposures have been used.

NOTE: Exposures are automatically counted and show on the Recording Dial the exact amount of film used.

The Dial returns to zero and will not operate when the Loading Door is opened.

Do not open the Loading Door until the entire Film is used and wound on the Empty Stool (see Fig. 5).

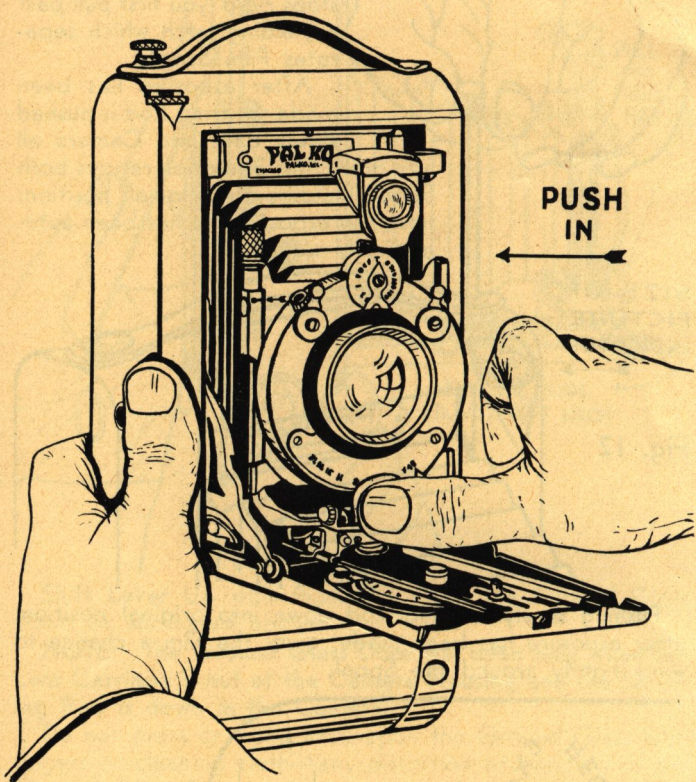


Fig. 14

Push-In the Lens by pressing with the right thumb on the "Push-In" Handle as illustrated above.

NOTE: Never push the Lens into "PAL KO" Camera by pressing on the Lens or the Lens Holding Standard.

Do not fold "PAL KO" Camera, when through using it, before the Lens is in central position, the Cable Release is placed in a position as illustrated in Fig. 15, the Shifting Rod is down in the Camera and the Ground Glass Door is closed!

Line up well the center-indicating white marks before folding.

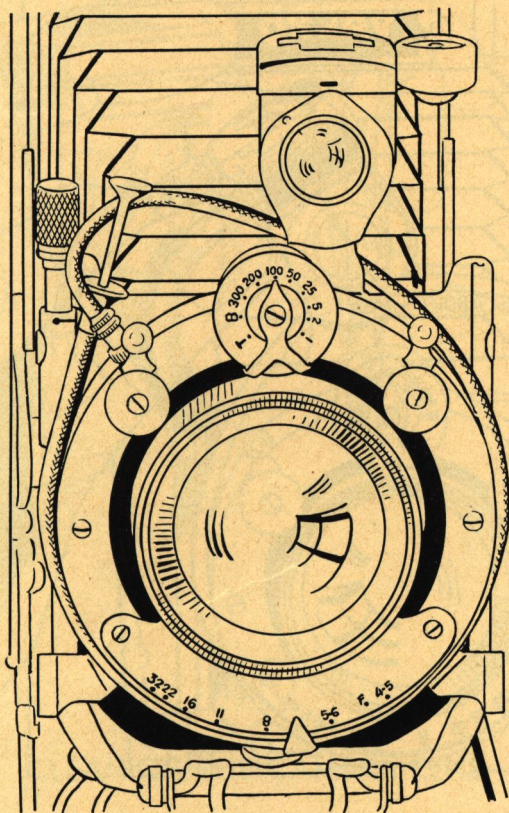


Fig. 15

Before folding the Camera, **put the Cable Release around the Shutter** in the position illustrated above.

Pass Cable Release behind View-Finder, then, connecting the Button End of Cable Release Handle under and over the Cable Release Base as shown here, slip the Cable Release over the Shutter. This prevents the damaging of Lens, Bellows and other parts of the Camera.

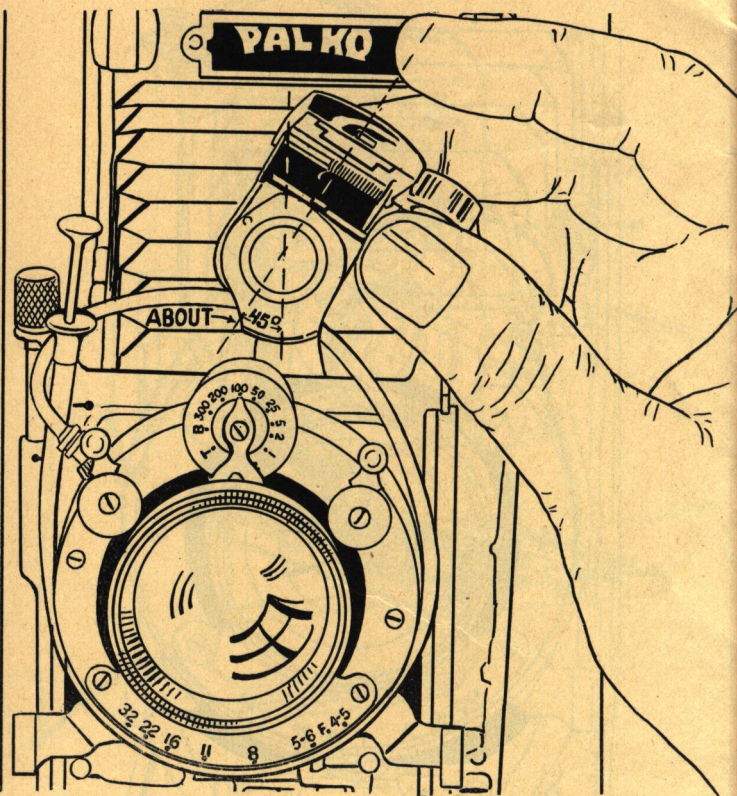


Fig. 16

CLEANING THE VIEW-FINDER

Turn View-Finder into the position illustrated above (about 45° angle).

Then, with the forefinger on the View-Finder's rear and the thumb on its front, squeeze gently and lift up the cover with the thumb.

After cleaning thoroughly put it back into former position.

NOTE: Do not return Lens into Camera Housing with View-Finder left unfolded.

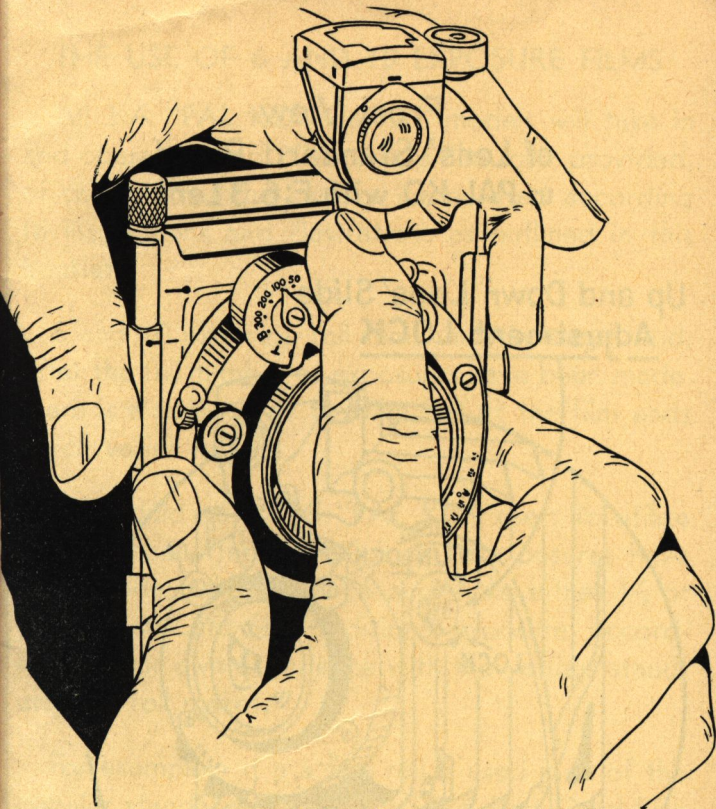


Fig. 17

CLEANING THE CAMERA LENS

Unscrew the Shutter out of the Front Board as illustrated above.

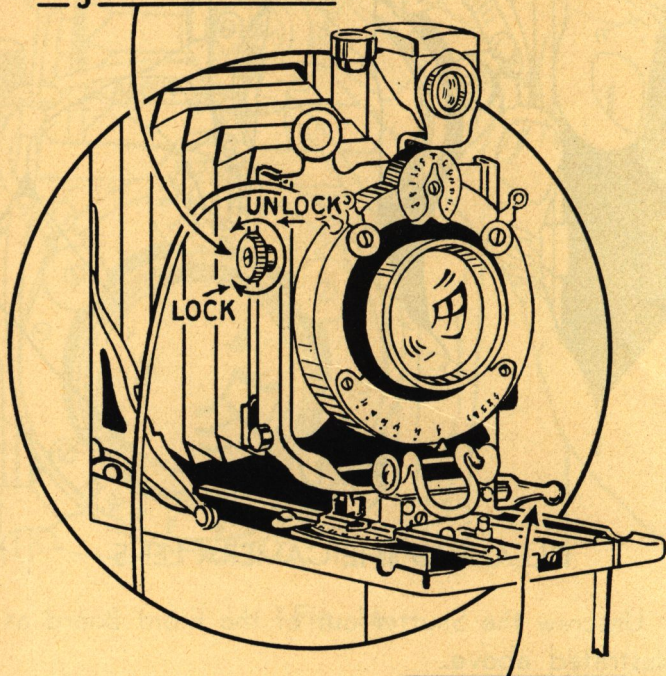
Always support the Lens Standard and protect it from bending, which would dislocate the well-centralized position of the lens focus.

When the Shutter is completely out, screw out the Lenses, one at a time, and, after cleaning them thoroughly with chamois or special lens cleaning paper, screw them back into Shutter and the Shutter into the Front Board; this completes the operation.

NOTE: Avoid pressing on the small Levers on the Shutter which serve for setting up the time of exposures.

Front View
of Lens' Standard Board
in PAL KO with F:6.3 Lens

Up and Down Lens' Slide
Adjustment LOCK



Lens' Carriage
STEADY LOCK

Fig. 18

All "PAL KO" Camera models are equipped with Lens Carriage **Steady Locks** which are valuable when making T Exposures under conditions where rigidity and steadiness are essential.

NOTE: Do not attempt to return lens into Camera Housing before Steady Lock is unlocked.

THE USE OF 6 AND 10 EXPOSURE FILMS

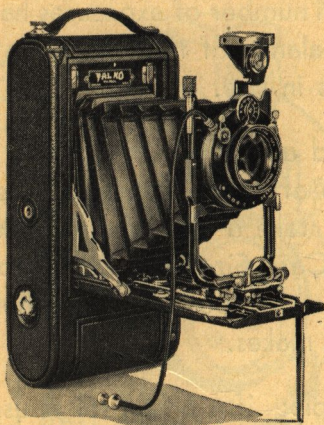
All 3-A "PAL KO" Camera models will take in and operate 6 and 10 exposure film rolls; provided, of course, that the camera is operated according to instructions and illustrations as outlined in this booklet.

6 and 10 exposure roll films vary in length and, after the full number of exposures have been made, there is a balance of the film left at the film ends which varies in size.

We would advise all "PAL KO" users to utilize this balance after the full 6 or 10 exposures have been made; take a chance and make either $\frac{1}{3}$ or $\frac{2}{3}$ of Post Card Size additional exposure, according to your own experience with the various standard film roll makes.

For example: if a 6 film roll is used (one of the popular standard makes) and full 6 Post Card Size Exposures have been made, try to make an additional $\frac{2}{3}$ Post Card Size Exposure; then, if **3A**, $\frac{2}{3}$, and $\frac{1}{3}$ are diversified and the Recording Dial registers "6", try to make an additional $\frac{1}{3}$ Size Exposure (some standard film roll makes will permit additional $\frac{2}{3}$ Post Card Size Exposure even with diversified exposure sizes). These conditions also apply to 10 film roll of popular standard makes.

You will find it very valuable to keep a record of the various exposures as to **the size of the picture, time of exposure, size of aperture stop and the time of the day**; then, after the film is developed, you will have an opportunity to observe and study the film in connection with your record. **The film in this case should not be cut when developed**—it should retain its original length as it came off the roll. If you do not develop the film yourself, instruct those who develop it for you not to cut the film when it is developed.



PALKO
INC.

MANUFACTURERS OF

PALKA CAMERAS

817 W. Washington Blvd.

CHICAGO, ILL.

U. S. A.