



*Zeiss Ikon*  
*Cameras*

Quality first, because quality lasts. In these few words can be summed up the reason why you should buy a Zeiss Ikon. The substantial construction and ease of operation have won for Zeiss Ikon the highest place among the World's fine cameras.

## TO SELECT A CAMERA

consider the following:

**Type of Camera:** The Zeiss Ikon line includes many models, ranging from the simple snapshot to the precision camera. In general, rollfilm cameras are popular with the public at large, because of their simplicity of operation, while plate and film-pack cameras are preferred by more serious photographers.

**Size of Picture:** It must be obvious that excellent lenses ensure excellent pictures. This being the case, the size of the negative is relatively unimportant, because excellent enlargements to any practical size can be made from small, well defined negatives.

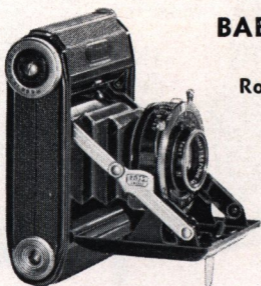
**Lenses and Shutters:** Zeiss Ikon Cameras are fitted with a highly corrected Novar Anastigmat in Derval Shutter or the celebrated Zeiss Tessar in Compur Shutter. Special models are available with focal plane shutters up to 1/2000th sec. Distar and Proxar supplementary lenses may be used on Zeiss Tessar equipped cameras having double bellows extension. Distars lengthen the focal length while Proxars shorten it.

**Films and Plates:** Standard sizes are used on all Zeiss Ikon Cameras. Cut films may also be used in plate holders with special sheaths. Tripod sockets have standard threads, focusing scales are in feet, and diaphragm markings in the familiar F/ system.

**Prices:** These are very largely determined by the picture size, lens and shutter equipment as well as by the quality of workmanship and materials built into the camera.

Zeiss Ikon Cameras, with proper care, not only will last a life-time, but are also more economical to operate, because of their superior quality and performance. Special folders on the auto-focusing models Super Ikonta, Super Nettel, Contax, Contaflex will be furnished on request.

# Leiss Ikon Cameras



## **BABY IKONTA** Miniature Rollfilm Camera

Picture Size:  $1\frac{1}{4} \times 1\frac{5}{8}$ "  
Lens: Zeiss Tessar F/3.5 (2" focus)  
Shutter: Rapid Compur 1 to 1/500 sec. T & B  
Price: \$54  
Leather carrying case \$2.50 extra.

**A** POPULAR little picture maker. So small it fits a man's pocket or a woman's purse. Pressing the button causes the camera to open automatically, set for instant action. It takes 16 exposures on standard V.P. rollfilm and is therefore most economical to use. Splendid enlargements can be made with the Helinox Enlarger, listed on page 18.

*Makes vertical or horizontal pictures  
this size*



# *Leiss Ikon Cameras*

---



## **IKONTA A** **For Rollfilm**

Picture Size:  $1\frac{5}{8} \times 2\frac{1}{4}$ "  
Lens: Nettar F/4.5 (3" focus) or  
Zeiss Tessar F/3.5 (3" focus)  
Shutter: Klio 1, 1/2, 1/5, 1/10, 1/25, 1/50, 1/100,  
1/175, sec. T & B  
Rapid Compur 1 to 1/500 sec. T & B  
Prices: With Nettar F/4.5, \$30.00,  
With Tessar F/3.5, \$58.00  
Leather Carrying Case: \$3.25 extra.

**T**HIS compact camera makes 16 exposures on standard  $2\frac{1}{4} \times 3\frac{1}{4}$ " rollfilm. Pressure on the button opens the camera ready for use. By means of a simple adjustment it may be used as fixed focus camera. The Klio shutter is of the "delayed action" type. Fitted with the Nettar Anastigmat F/4.5, this little camera is an extremely efficient and economical outfit.

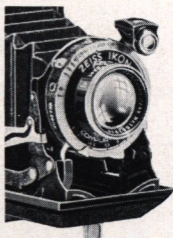
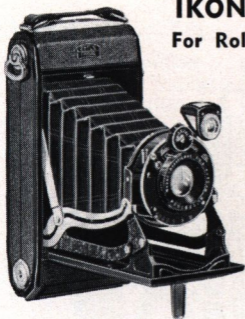


*The Ikonta  
takes vertical  
and horizontal  
pictures  
this size.*

# Leiss Ikon Cameras

## IKONTA C & D

For Rollfilm



Front view of IKONTA  
SPECIAL

**T**WO models differing in size, weight, lenses and shutters only. Sturdy all metal construction. Simple and economical to operate. Hinged back simplifies loading. Pressing a button opens the base board and the camera is ready set for action. Front lens focusing. Besides two-point setting permits operation as fixed focus models for objects at 12 ft. or more. Direct vision and brilliant view finders. Equipped with F/6.3 Anastigmat lenses.

### IKONTA C and D SPECIAL

Camera bodies as above but equipped with optical view finder and with Zeiss Tessar lenses in Compur shutters. Insert masks permit taking either 8 or 16 pictures of two different sizes. Model C F/4.5 has the shutter release on the camera body.

| Model     | Picture Size               | Lens                                | Shutter                           | Price          |
|-----------|----------------------------|-------------------------------------|-----------------------------------|----------------|
| C         | 2¼ x 3¼"                   | Nettar F/6.3<br>4⅛"                 | Derval<br>1/25-<br>1/100<br>T & B | \$19.00        |
| D         | 2½ x 4¼"                   | Novar F/6.3<br>4¾"                  | T & B                             | 25.00          |
| C Special | 2¼ x 3¼"<br>or<br>1⅝ x 2¼" | Tessar F/3.8<br>Tessar F/4.5<br>4⅛" | Compur<br>1/400<br>T & B          | 72.50<br>61.00 |
| D Special | 2½ x 4¼"<br>or<br>2 x 2⅝"  | Tessar F/4.5<br>4¾"                 | Compur<br>1-1/250<br>T & B        | 61.50          |

Leather Carrying Cases: C: \$3.75; D: \$4.50

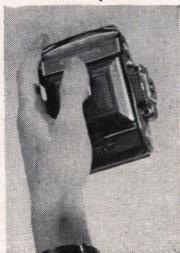
# Leiss Ikon Cameras

## **SUPER IKONTA A** For Rollfilm



Picture size: 16 pictures  $1\frac{5}{8} \times 2\frac{1}{4}$ "  
Lens: Zeiss Tessar F/3.5— $2\frac{3}{4}$ "  
Shutter: Compur 1— $1/300$  sec. T & B  
Price: \$100.00. Case extra.  
Eveready carrying case, \$8.00  
Leather carrying case, \$3.25

**F**OR natural, unposed action pictures and in fact for any other photos where critical definition is desired this model is ideal. The auto-focusing rangefinder device eliminates guessing of distances, enabling to work at full opening and thus utilizing all the speed of the lens. Enlargements of many diameters possible.



Aside from the ingenious rangefinder device this Super Ikonta A model is built like the Ikonta, camera shown on page 4.

Special folder with detailed description on request.

*Just a handful.*  
Size of closed camera:  
 $4\frac{1}{2} \times 3 \times 1\frac{5}{8}$ "

# Leiss Ikon Cameras

## **SUPER IKONTA**

### **C and D For Rollfilm**

C: Lens: Zeiss Tessar  
F/3.8 or F/4.5,  $4\frac{1}{8}$ "

Shutter: Compur 1 to  
 $\frac{1}{250}$  T & B

Prices:

F/4.5 - \$ 97.00

F/3.8 - \$114.00

D: Lens: Zeiss Tessar  
F/4.5,  $4\frac{3}{4}$ "

Shutter: Compur 1 to  
 $\frac{1}{400}$  T & B

Price: \$107.00

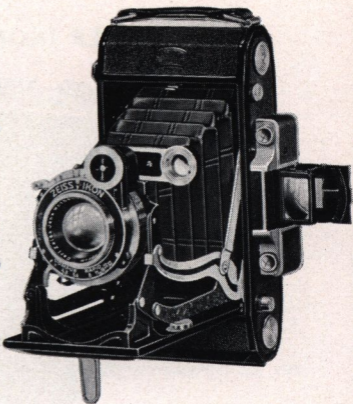
Case extra

Eveready Carrying Case:

C: \$9.00, D: \$10.00

Leather Carrying Case:

C: \$3.75, D: \$4.50

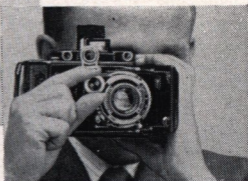


**S**AME auto-focusing device as shown on previous page. In all other regards they are nearly alike in construction and size to the Ikonta C and D models, page 5. They, too, permit taking two sizes of negatives, viz.:

C: 8 pictures  $2\frac{1}{4}$  x  $3\frac{1}{4}$ " or  $16-1\frac{5}{8}$  x  $2\frac{1}{4}$ "

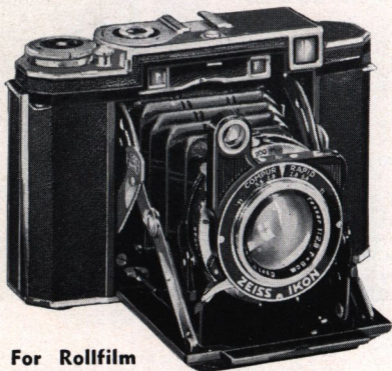
D: 8 pictures  $2\frac{1}{2}$  x  $4\frac{1}{4}$ " or  $16-2$  x  $2\frac{3}{8}$ "

To rollfilm cameras of the Super Ikonta type belongs the future. Additional accessories for all Super Ikonta models are: Filters, sunshades, portrait lenses, eveready case and standard leather case. Special folder on request.



# Zeiss Ikon Cameras

## SUPER IKONTA B



### For Rollfilm

Picture Size:  $2\frac{1}{4} \times 2\frac{1}{4}$ " (6 x 6 cm)  
Lens: Zeiss Tessar F/2.8 (or F/3.5)— $3\frac{1}{8}$ " (8 cm)  
Shutter: New ST Compur 1 to 1/400 sec.  
Price: F/2.8 \$140.00; F/3.5 \$130.00  
Eveready leather carrying case \$9.00 extra.  
Leather carrying case \$4.50 extra.

**A**UTOFOCUSING miniature camera. Built-in distance meter and optical finder. Greatest simplicity and ease of operation. Wide range of shutter speeds. Eleven exposures on standard  $2\frac{1}{4} \times 3\frac{1}{4}$ " rollfilm. Easy winding key on top and release right next to it. Special device preventing double exposure.

Counter showing number of negatives exposed. Numerous extra accessories including near focusing device are available. Size of camera only  $6 \times 3\frac{3}{4} \times 2$ ". Fits your coat pocket. Weight only 2 lbs.

An ideal camera for photographers who prefer a modern miniature camera making a somewhat larger size negative. Special folder on request.

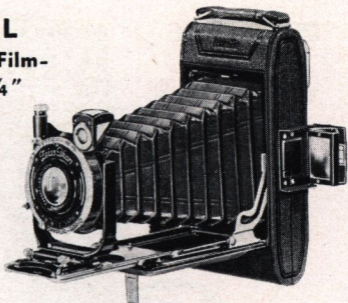


# *Leiss Ikon Cameras*

## **ICARETTE L**

**For Rollfilm and Film-  
packs 2 1/4 x 3 1/4"**

**For Cutfilm  
and Plates  
2 1/2 x 3 1/2"  
(6 1/2 x 9 cm)**



**Lens: Zeiss Tessar F/4.5—4 1/8"**

**Distar and Proxar lenses extra**

**Shutter: Self timing Compur 1 to 1/400 sec.**

**T & B**

**Bellows Extension: 7 1/4"**

**Prices: Camera for rollfilm \$110.00 incl. leather  
case, ground glass back & 3 plate holders.**

**Distar, Proxar lenses \$6.00—ea.;**

**Film-pack adapter \$3.30. Ground glass  
back \$3.75.**

**T**HIS fine camera is an unusually versatile model, because it may be used with either rollfilms or plates, film-packs or cut films, in combination with the ground glass and focusing hood. Lens and shutter easily interchangeable by means of a bayonet fitting. Moreover, its double bellows extension permits the use of Distar and Proxar Lenses. Front may be raised or lowered. Equipped with brilliant and wire view finders.



# *Leiss Ikon Cameras*

## **IKOFLEX II**

**For Rollfilm  
Picture Size  
2 1/4 x 2 1/4"**



Lens: Zeiss Tessar F/3.5—3".

Shutter: Rapid Compur, T, B, 1-1/500 sec.

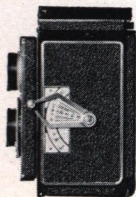
Prices: \$95.00. Case \$7.00. Eveready case \$9.00

Yellow filter L x 28.5—\$5.00.

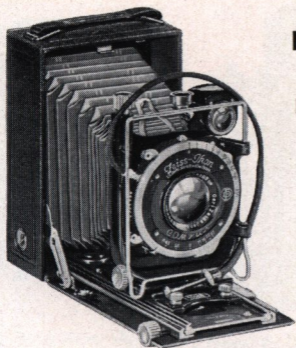
Sunshade 28.5—\$2.00.

Supplementary Lenses for 3 to 1 1/2' or  
1 1/2 to 1' dist.—\$6.00 per pair.

**T**HIS advanced model of a 2 1/4 x 2 1/4" reflex camera will appeal to the most exacting photographer. Twelve exposures from standard eight exposure 2 1/4 x 3 1/4" rollfilm. Equipped with fast F/3.5—7.5 cm Zeiss Tessar lens in new rapid Compur shutter. Extra brilliant full-size viewing image with even illumination to edge of screen. Strong magnifier in hood for very fine focusing. Automatic film counter, visible from top of camera, resets to zero when camera is unloaded. Many other new features including new type focusing lever which automatically indicates diaphragm setting for required depth of focus. Eye level finder.



# Leiss Ikon Cameras



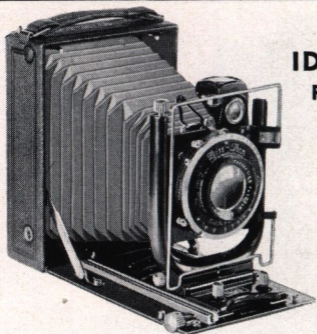
## **MAXIMAR A and B For Plates and Filmpacks**

Picture Size: A: (Plates)  $2\frac{1}{2} \times 3\frac{1}{2}$ "  
( $6\frac{1}{2} \times 9$ cm); (Filmpacks)  $2\frac{1}{4} \times 3\frac{1}{4}$ ";  
B: (Plates)  $3\frac{1}{2} \times 4\frac{3}{4}$ " ( $9 \times 12$ cm);  
(Filmpacks)  $3\frac{1}{2} \times 4\frac{3}{4}$ " ( $9 \times 12$ cm)  
Lens: Zeiss Tessar F/4.5 A:  $4\frac{1}{8}$ "; B:  $5\frac{1}{4}$ "  
Shutter: New Compur A: 1 to  $1/400$  sec. T & B  
B: 1 to  $1/200$  sec. T & B  
Prices: A: \$61.50; B: \$71.50  
Leather Carrying Case: \$5.50 extra

**T**HESE cameras embody many features of the more advanced Ideal models, yet are moderately priced. Both have double bellows extension, permitting the use of Distar and Proxar Lenses. They are outstanding values for plate camera enthusiasts in all parts of the globe, seeking a finely finished camera that will handle practically every phase of photographic work.



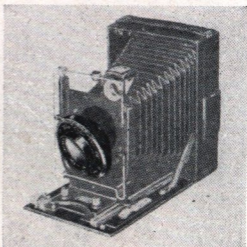
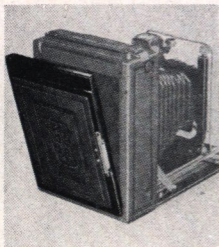
# *Leiss Ikon Cameras*



## **IDEAL A and B** For Plates and Film packs

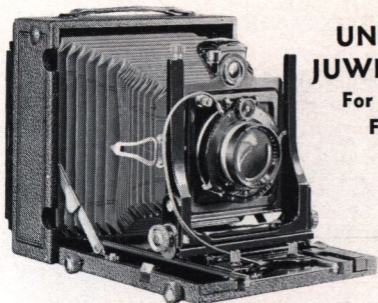
Picture Size: A: (Plates)  $2\frac{1}{2} \times 3\frac{1}{2}$ "  
( $6\frac{1}{2} \times 9$ cm); (Film packs)  $2\frac{1}{4} \times 3\frac{1}{4}$ ";  
B: (Plates)  $3\frac{1}{2} \times 4\frac{3}{4}$ " ( $9 \times 12$ cm);  
(Film packs)  $3\frac{1}{2} \times 4\frac{3}{4}$ " ( $9 \times 12$ cm)  
Lens: Zeiss Tessar F/4.5 A:  $4\frac{3}{4}$ "; B:  $5\frac{1}{4}$ " or 6"  
Shutter: New Compur A: 1 to  $1/250$  sec. T & B  
B: 1 to  $1/200$  sec. T & B  
Prices: A: \$95.00; B: ( $5\frac{1}{4}$ " focus), \$115.00,  
(6" focus), \$125.00; case included

**E**VERY conceivable adjustment is embodied in these splendid precision cameras. Both have extremely long bellows extension permitting the use of Distar and Proxar Lenses. The hinged front permits lateral and vertical adjustments. Lenses and shutter easily interchangeable. Clamped-on back a most convenient feature. Moreover Model B has a vertical swingback. Cameras most rigidly built. Ideal as the name implies.—For serious work.



# Leiss Ikon Cameras

## **UNIVERSAL JUWEL A and B For Plates and Filmpacks**



Picture Size: A:  $3\frac{1}{2} \times 4\frac{3}{4}$ " (9 x 12cm);

B: 5 x 7"

Lens: Zeiss Tessar F/4.5; A: 6 and  $6\frac{1}{2}$ " focus;

B:  $8\frac{1}{4}$ " focus

Shutter: A: New Compur 1 to 1/200 sec. T & B

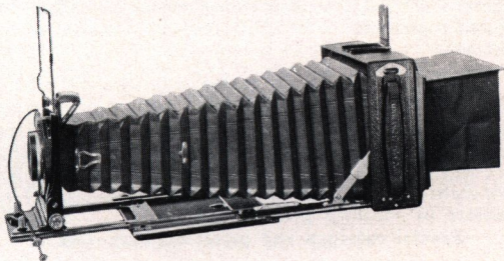
B Compound 1 to 1/100 sec. T & B

Bellows Extension: A: 16"; B: 19"

Prices: A: (6" focus), \$224.00, ( $6\frac{1}{2}$ " focus),

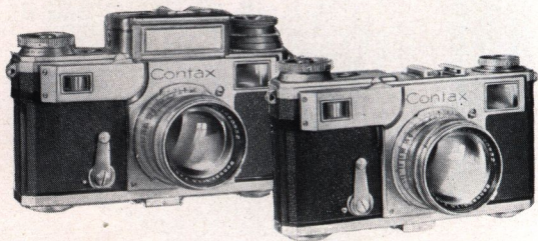
\$246.00; B: \$374.00, incl. cases

**T**HE Jewel A and B embody every essential feature for the advanced amateur, artist, scientist and professional photographer. They are jewels of precision, workmanship and performance. Both have revolving, clamp-on backs for convenient manipulation and triple bellows extension. Camera beds may be raised or lowered and the front set parallel with the back.



# *Leiss Ikon Cameras*

## *Contax the Universal Camera*



**CONTAX II (Chromium)**

**CONTAX III (with Built-in Exposure Meter)**

**C**ONTAX is the foremost 35 mm. camera. Accurate range finder focusing. 14 interchangeable lenses, apertures from F/1.5 to F/8; focal lengths from 28 mm. to 500 mm. Metal focal plane shutter. Automatic film transport. Daylight loading. Removable back permits access for cleaning and allows substitution of plate back for use of plates or cut film.

CONTAX I is finished in black enamel.

CONTAX II This new model is finished in chromium and embodies all the advantages of the Contax I plus new refinements. Range and view finders combined in one sight. Winding knob on top of camera with shutter release in center of knob. Top speed increased to 1/1250 second. Delayed action release.

CONTAX III is the latest achievement and is the most complete 35 mm. miniature camera. Identical with the Contax II except for the addition of a sensitive, built-in photoelectric exposure meter, providing within the camera means for instant and accurate control of exposure and focus—the twin factors in assuring good negatives.

**Special catalogs and price list on request.**

# Leiss Ikon Cameras

## **CONTAFLEX**

### **For 35 mm Rollfilm**

Picture size: 24 x 36 mm—  
36 in a load

Shutter: Metal focal plane  
like the Contax shutter  
11 speeds, up to  
1/1000 sec.

Six interchangeable lenses  
are available

Price: With Tessar  
F/2.8, 50 mm \$321.00

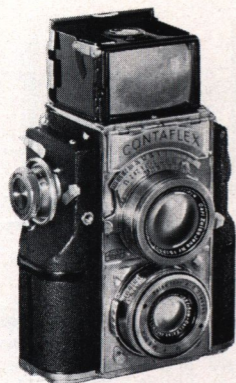
With Sonnar F/2, 50  
mm \$348.00

With Sonnar F/1.5,  
50 mm \$435.00

Additional lenses alone:  
Triotar F/4, 85 mm  
\$85  
Sonnar F/4, 135 mm  
\$108.00  
Sonnar F/2, 85 mm  
\$215

Eveready Case \$14

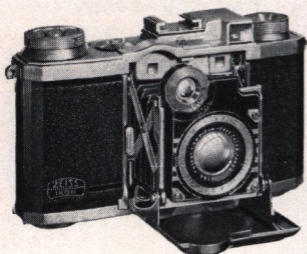
Plate Adapter \$25.00



**C**ONTAFLEX is a reflex camera of entirely novel design. It is the first miniature camera with built-in photoelectric exposure-meter. The meter is extremely sensitive permitting readings even in poorest light and only the light from the scene affects the meter due to built-in prisms and cover. The ground glass picture gives the actual field covered but in the enlarged size of 35x50 mm., hence greater ease and accuracy in focusing. Accuracy of focusing is further increased by the use of a finder lens of long focus. Front and back of finder hood form the Albada finder—perfect for fast work. Winding of shutter transports the film. Contaflex uses daylight loading spool or magazine, also cutfilm or plates. It has a detachable back and takes many accessories similar to Contax.—All metal parts of the camera are chromium plated.

**Special folder on request.**

# Leiss Ikon Cameras



## **SUPER NETTEL**

for

**35 mm Rollfilm**

Picture Size: 24x36 mm  
36 in a load

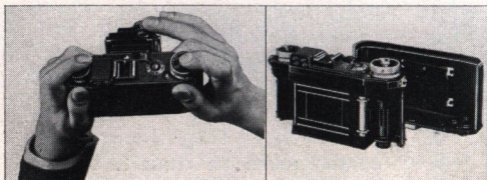
Lens: Tessar F/2.8 —  
50 mm

Shutter: Silent metal  
focal plane 9  
speeds, 1/5 to  
1/1000 sec. and B

Price: \$115.00. Eveready  
case \$8.00 extra.  
Soft leather pouch,  
\$3.50.

**N**EW automatic miniature camera. Embodies many features of the Contax camera. The Super Nettel is compact, rigid and pleasing. The built-in optical view finder gives a bright upright picture. The built-in range finder with its patented wedge lens system permits automatic critical focusing. Turning the shutter winding knob automatically advances the film by one section. No double exposures possible. Rewinding of film unnecessary. Automatic picture counter. Shoe on top of camera accommodates extra finders and other accessories for special type of work. Detachable back permits simple daylight loading with spool or cartridge. Also takes plate back adapter. Covered with black grained leather with exposed metal parts chromium plated.

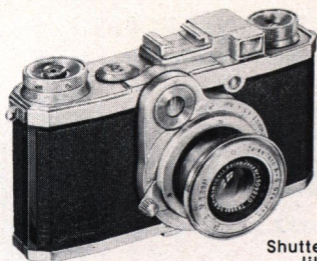
**Special catalog and price list on request.**





# Leiss Ikon Cameras

---



## NETTAX

for

35 mm Rollfilm

Picture Size:

24 x 36 mm

36 in a Load

Shutter: Metal focal plane  
like the Contax shutter.

9 Speeds: 1/5 to 1/1000 sec. and B.

Lens: Tessar F/2.8—50 mm.

Price: \$165.00. Eveready Case \$11.00.

Extra interchangeable Carl Zeiss Triotar F/5.6,  
105 mm. \$120.00.

**T**HE new Nettax was designed to meet the demand for a moderately priced precision miniature camera using 35 mm. film. It incorporates many of the well-known Contax features. Built-in superimposed-image range finder. Automatic film transport preventing double exposure. Daylight loading with regular film spool or Contax metal magazine. No rewinding necessary. Removable back for easy access in cleaning and loading. Automatic picture counter. Fast Zeiss Tessar F/2.8—50 mm. lens or interchangeable Zeiss Triotar F/5.6, 105 mm. Shoe on top of camera accommodates extra finders. Contameter and other accessories. Cased in a rigid metal housing, covered with black grained leather with all exposed metal parts chromium plated, the Nettax will give years of photographic enjoyment.

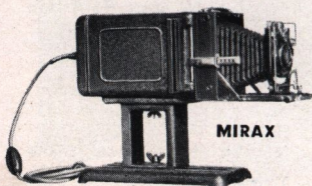
**Special folder and price list on request.**



# *Zeiss Ikon Cameras*

## **ZEISS IKON ENLARGERS**

**Additional information supplied on request**



**MIRAX**

Enlarging attachment for plate cameras  $6\frac{1}{2} \times 9$  cm. to  $9 \times 12$  cm., or rollfilm cameras  $2\frac{1}{4} \times 3\frac{1}{4}$ " to  $3\frac{1}{4} \times 4\frac{1}{4}$ ". Camera backs must be removable or hinged, **\$16.00.**



**MAGNIPHOT**

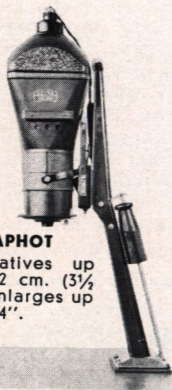
**Without Lens**

**\$50.00**

**With Novar F/4.5**

**\$65.00**

For 35 mm.  
Film Negative



**MIRAPHOT**

For negatives up to  $9 \times 12$  cm. ( $3\frac{1}{2} \times 4\frac{3}{4}$ ") enlarges up to  $11 \times 14$ ".

With Novar F/6.3 lens, **\$60**  
With Zeiss Tessar  
F/4.5 lens, **\$70**

**HELINOX**

**\$10.00**

Fixed focus allowing enlargement only up to  $9 \times 12$  cm. . . for negatives up to the size of Baby Ikonta ( $1\frac{1}{4} \times 1\frac{5}{8}$ ").



PRICES AND EXPOSURE FACTORS FOR ZEISS AND ZEISS IKON FILTERS

19

| FILTER COLOR                                | Ultra-Violet   | Light Yellow   | Medium Yellow  | Dark Yellow  | Orange         | Blue   | Yellow Green | Green        | Light Red  | Medium Red | Dark Red | Black             | Carl Zeiss Yellow |                | Proxar | Herotar | Sun-shade  | Filter Mount |        |
|---|----------------|----------------|----------------|--------------|----------------|--------|--------------|--------------|------------|------------|----------|-------------------|-------------------|----------------|--------|---------|------------|--------------|--------|
| FILTER DESIGNATION                          | C0             | G1             | G2             | G3           | G4             | B5     | GR5          | GR10         | R10        | R15        | R20      | R30               | L                 | D              |        |         |            |              |        |
| Approximate Factor* for PANCHROMATIC Film   | D 1.3<br>M 1.3 | D 1.4<br>M 1.2 | D 1.6<br>M 1.4 | D 2<br>M 1.5 | D 2.3<br>M 1.5 |        | D 2<br>M 1.5 | D 3<br>M 2.5 | D 6<br>M 4 | D 25       | D 25     | Infra-red<br>1000 | D 1.5<br>M 1.3    | D 1.8<br>M 1.4 |        |         | D 2<br>M 2 |              |        |
| Approximate Factor* for ORTHOCHROMATIC Film | D 1.5<br>M 1.5 | D 2<br>M 1.6   | D 3<br>M 1.6   | D 5<br>M 2   | D 10<br>M 3    |        | D 4<br>M 3   | D 7<br>M 5   |            |            |          |                   | D 3<br>M 1.8      | D 4<br>M 1.9   |        |         | D 2<br>M 2 |              |        |
| Millimeter Lens Diameter                    |                |                |                |              |                |        |              |              |            |            |          |                   |                   |                |        |         |            |              |        |
| 25.5  | \$3.25         | \$3.25         | \$3.25         | \$3.25       | \$4.50         | \$4.50 | \$4.50       | \$4.50       | \$4.50     | \$4.50     | \$4.50   | \$4.50            |                   |                |        |         |            | \$3.00       | \$3.00 |
| 27  |                |                |                |              |                |        |              |              |            |            |          |                   | \$5.00            | \$5.00         | \$5.00 |         |            | 2.00         | 2.00   |
| 28.5  |                |                |                |              |                |        |              |              |            |            |          |                   | 5.00              | 5.00           | 5.00   | \$10.00 | 2.00       | 2.00         |        |
| 32  | 4.00           | 4.00           | 4.00           | 4.00         | ...            | 4.50   | 4.50         | 4.50         | 4.50       |            |          |                   | 6.00              | 6.00           | 6.00   | 12.00   | 2.00       | 2.50         |        |
| 37  | 4.00           | 4.00           | 4.00           | 4.00         | 4.50           | 4.50   | 4.50         | 4.50         | 4.50       |            |          |                   | 6.00              | 6.00           | 6.00   | 13.00   | 2.25       | 2.50         |        |
| 40.5  | 4.50           | 4.50           | 4.50           | 4.50         | 5.50           | 5.50   | 5.50         | 5.50         | 5.50       | 5.50       | 5.50     | 7.00              | ..                | ..             | ..     | ....    | 3.50       | ...          |        |
| 42  | 4.00           | 4.00           | 4.00           | 4.00         | 4.50           | 4.50   | 4.50         | 4.50         | 4.50       | 4.50       | 4.50     | 6.00              | 6.00              | 6.00           | 6.00   | 16.00   | 2.40       | 3.00         |        |
| 51  | 6.00           | 6.00           | 6.00           | 6.00         | 6.50           | 6.50   | 6.50         | 6.50         | 6.50       | 6.50       | 6.50     | 9.00              | 7.50              | 7.50           | 7.50   | 20.00   | 3.25       | 4.50         |        |

\* D means daylight  
\* M means Mazda light

SUPER-IKONTA  
A 32mm. C 37mm.  
B 37mm. D 37mm.

IKOFLEX II  
28.5mm

SUPER-NETTEL & NETTAX  
25.5mm. screw-in  
40.5mm. screw-in

CONTAX  
27—42—51mm.  
40.5mm. screw-in

CONTAFLEX  
42—51mm.  
40.5mm. screw-in

# Contax



THE  
UNIVERSAL  
CAMERA

14  
INTERCHANGEABLE  
**ZEISS**  
LENSES



CARL ZEISS, Inc.

485 FIFTH AVENUE, NEW YORK

728 So. Hill St., Los Angeles