

Konica

Hexanon Lenses



Konica Hexanon Interchangeable Lenses make it possible to attain the full creative potential of every Konica SLR Camera. The optical excellence of every Hexanon Lens in terms of image contrast, high resolution, edge to edge sharpness and optimum light transmission has been attested to by noted photographic editors and optical scientists.

Designed with the aid of advanced computer technology, Konica Hexanon Lenses are extremely compact in size and light in weight to match the compact Konica SLR Camera bodies — with no compromise in Konica's rigid standards for optical and mechanical performance.

Konica Hexanon Lenses are available from 15mm Fisheye to 400mm Ultra Telephoto and Zoom Hexanon Lenses from 35-70mm to 80-200mm. 55mm and 105mm Macro Hexanon Lenses are also available as well as a Konica 2X Flat Field Teleconverter.

Superb Optics

Many types of special rare earth optical glass are used to create the high refractive indices necessary for Konica's sophisticated lens designs. A careful selection of premium quality glass plus stringent spectrophotometric tests after stress and strain checks provide the valuable raw glass for ultimate use in all Konica Lens elements.

Konica Color Dynamic Coating

Konica Color Dynamic Coating represents a significant breakthrough in optical technology. Through this advanced process, magnesium fluoride and cryolite coatings are applied to Hexanon Lenses both in single and in multiple layers according to the individual requirements of the specific lens type. The result: a dramatic reduction in "flare and haze" when compared to conventionally coated lenses, and a corresponding increase in both contrast and color saturation throughout the visible spectrum. This highly sophisticated process represents the finishing touch for each Konica Hexanon Lens.

Fully Automatic Exposure Control

All Konica Hexanon Lenses (from 15mm Fisheye to 400mm Ultra Telephoto) provide fully automatic exposure control with open aperture, thru-the-lens (TTL) metering on all Konica Autoreflex cameras. An "AE Lock" prevents inadvertent manual operation. Whenever desired, manual selection of apertures can be made by simply releasing the "AE Lock". For added convenience all Hexanon

Lenses have positive click stops at full apertures, and many also offer click stops at intermediate apertures as well.

New Konica Hexanon UC (Ultra Compact) Lens Series

A new series of automatic Hexanon UC Lenses (15mm f2.8, 28mm f1.8, 400mm f5.6, 45-100mm f3.5 Zoom and 80-200 f4 Zoom) are ultra compact and offer close focusing to macro range. Wide angle lenses in the UC Series focus to 8" or less from the focal plane. Multi-layer Konica Color Dynamic Coating delivers maximum light transmission and image clarity.

Precision Mounts

All Konica Hexanon Lenses are precision mounted in lightweight, yet extremely durable metal barrels. In assembly, each element is carefully centered, using optical bench inspection techniques. For ultimate accuracy in aperture operation, iris diaphragms of Hexanon Lenses are mounted on ball bearing races. Thus, exact automatic aperture transfer is assured even under extremes of temperature and climate.

Supplied with Carrying Case

For maximum protection, all Hexanon Wide Angle, Telephoto and Zoom Lenses are supplied with carrying cases and lens hoods; macro lenses with cases. Lens hoods and cases for standard lenses are available as optional accessories.

© Copyright 1980 Berkey Marketing Companies

Specifications subject to change without notice

Konica Division **BERKEY MARKETING COMPANIES**

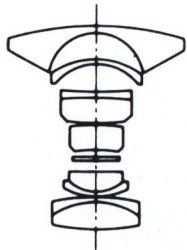
25-20 Brooklyn-Queens Expressway West, Woodside, NY 11377 • 1011 Chestnut Street, Burbank, CA 91506



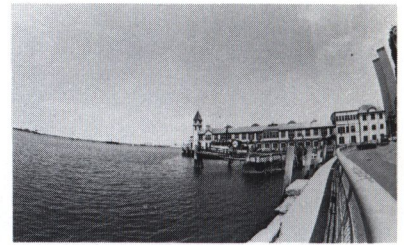
Konica

15mm f2.8 Automatic Fisheye Hexanon UC Lens

Cat. No. 703-105



15mm f2.8



15mm



40mm



50mm

Key Features

- Full frame fisheye lens. 180° angle of view with full coverage over the entire 35mm (24x36mm) film format -- with edge-to-edge sharpness. Allows unrestricted thru-the-lens viewing, focusing, and metering.
- Built-in filter system enables user to "dial-in" Y2 (yellow), R1 (red), 80B (blue) or 1A (Skylight) filtration when desired. Eliminates inconvenience of separate screw-in type filters.
- Ultra compact. Just 2.4" long, 2.8" diameter. And weighs only 14 ounces.
- Ultra close focusing. Focuses to 6" from film plane.
- Fully automatic exposure control with open aperture, thru-the-lens (TTL) metering. Positive "AE Lock" prevents unintentional switching to manual operation.
- Manual operation with positive click stops at full apertures.
- Konica Color Dynamic Coating reduces flare and increases contrast and color saturation throughout the visible spectrum.
- Built-in, cutaway lens hood, prevents vignetting.
- Type M Front Case Extender available for use with standard Konica Camera Case.

Technical Specifications

Focal Length	15mm
Aperture Range	f2.8 - f16
Construction	10 Elements, 7 Groups
Angle of View	180°
Minimum Focus from Film Plane	6" (0.15mm)
Coating	Color Dynamic Coating
Length	2.4" (60mm)
Maximum Diameter	2.8" (70mm)
Weight	13.9 oz. (395g)
Filter	Built-in Y2, R1, 80B, 1A
Lens Hood	Built-in
Case	Included

© Copyright 1980 Berkey Marketing Companies

Specifications subject to change without notice

Konica Division **BERKEY MARKETING COMPANIES**

25-20 Brooklyn-Queens Expressway West, Woodside, NY 11377 • 1011 Chestnut Street, Burbank, CA 91506



Konica

21mm f2.8 Automatic Ultra Wide Angle Hexanon Lens

Cat. No. 703-176



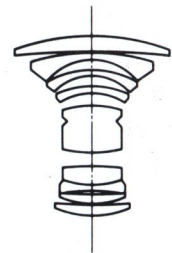
21mm



40mm



50mm



21mm f2.8

Key Features

- Ideally suited for architectural applications as well as restricted area interior shots.
- Compact design permits use of 55mm filters. Only 1.5" long and weighing only 7.6 ounces.
- Fully automatic exposure control with open aperture, thru-the-lens (TTL) metering. Positive "AE Lock" prevents unintentional switching to manual operation.
- Manual operation with positive click stops at full apertures.
- Konica Color Dynamic Coating reduces flare and increases contrast and color saturation throughout the visible spectrum.
- Carrying case and lens hood included.
- Fits standard case without the need for additional case extender.

Technical Specifications

Focal Length21mm
Aperture Rangef2.8 - f22
Construction9 elements, 8 groups
Angle of View90°
Minimum Focus from Film Plane8" (0.2m)
CoatingColor Dynamic Coating
Length1.5" (39mm)
Maximum Diameter2.5" (63mm)
Weight7.6 oz. (215g)
Filter Size55mm
Lens HoodIncluded
CaseIncluded

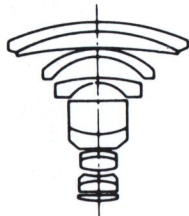
© Copyright 1980 Berkey Marketing Companies

Specifications subject to change without notice

Konica

24mm f2.8 Automatic Ultra Wide Angle Hexanon Lens

Cat. No. 703-169



24mm f2.8



24mm



40mm



50mm

Key Features

- Continuous focusing to as close as 9.8" from the film plane.
- Exceptionally lightweight and compact — weighs just 9.9 ounces and is only 2.1" long.
- Positive full and half click stops from f2.8 to f16 for precise manual aperture control.
- Fully automatic exposure control with open aperture, thru-the-lens (TTL) metering. Positive "AE Lock" prevents unintentional switching to manual operation.
- Konica Color Dynamic Coating reduces flare and increases contrast and color saturation throughout the visible spectrum.
- Carrying case and lens hood included.
- Type M Front Case Extender available for use with standard Konica Camera Case.

Technical Specifications

Focal Length24mm
Aperture Range f2.8 - f16
Construction 8 Elements, 8 Groups
Angle of View 84°
Minimum Focus from Film Plane 9.8" (0.25m)
Coating Color Dynamic Coating
Length 2.1" (54mm)
Maximum Diameter 2.5" (63mm)
Weight 9.9 oz. (280g)
Filter 55mm
Lens Hood Included
Case Included

© Copyright 1980 Berkey Marketing Companies

Specifications subject to change without notice

Konica Division **BERKEY MARKETING COMPANIES**

25-20 Brooklyn-Queens Expressway West, Woodside, NY 11377 • 1011 Chestnut Street, Burbank, CA 91506



Printed in U.S.A.

Konica

28mm f1.8 Automatic Wide Angle Hexanon Lens

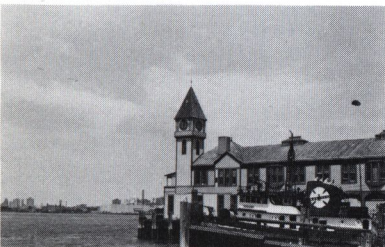
Cat. No. 703-171



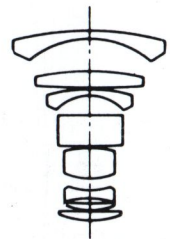
28mm



40mm



50mm



28mm f1.8

Key Features

- Fast f1.8 maximum aperture provides brighter viewfinder image for quick, critically accurate focusing and faster shutter speeds for stopping all the action.
- Focuses down to 7.1" from the film plane — one of the closest focusing wide angle lenses available.
- Exceptionally light and compact — weighing 13.4 ounces and just 2.5" long.
- Floating element design insures optimum sharpness even at the minimum focus position.
- Fully automatic exposure control with open aperture, thru-the-lens (TTL) metering. Positive "AE Lock" prevents unintentional switching to manual operation.
- Manual operation with positive click stops at full apertures.
- Konica Color Dynamic Coating reduces flare and increases contrast and color saturation throughout the visible spectrum.
- Carrying case and lens hood included.
- Type M Front Case Extender available for use with standard Konica Camera Case.

Technical Specifications

Focal Length28mm
Aperture Rangef1.8 - f16
Construction8 Elements, 8 Groups
Angle of View75°
Minimum Focus from Film Plane7.1" (0.18m)
CoatingColor Dynamic Coating
Length2.5" (63mm)
Maximum Diameter2.6" (66mm)
Weight13.4 oz. (380g)
Filter55mm
Lens HoodIncluded
CaseIncluded

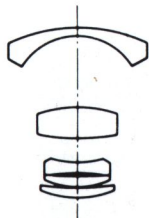
© Copyright 1980 Berkey Marketing Companies

Specifications subject to change without notice

Konica

28mm f3.5 Automatic Wide Angle Hexanon Lens

Cat. No. 703-191



28mm f3.5



28mm



40mm



50mm

Key Features

- The most popular focal length in the wide angle group. Excellent for architecture, interiors and panoramic shots.
- Extremely lightweight and compact. Just 1.4" long and weighing just 6.2 ounces.
- Focuses down to just 11.8" from the film plane.
- Fully automatic exposure control with open aperture, thru-the-lens (TTL) metering. Positive "AE Lock" prevents unintentional switching to manual operation.
- Manual operation with positive click stops at full apertures.
- Konica Color Dynamic Coating reduces flare and increases contrast and color saturation throughout the visible spectrum.
- Carrying case and lens hood included.
- Fits standard case without the need for additional case extender.

Technical Specifications

Focal Length	28mm
Aperture Ring	f3.5 - f22
Construction	5 Elements, 5 Groups
Angle of View	75°
Minimum Focus from Film Plane	11.8" (0.3m)
Coating	Color Dynamic Coating
Length	1.4" (36mm)
Maximum Diameter	2.5" (63mm)
Weight	6.2 oz. (175g)
Filter	55mm
Lens Hood	Included
Case	Included

© Copyright 1980 Berkey Marketing Companies

Specifications subject to change without notice

Konica Division **BERKEY MARKETING COMPANIES**

25-20 Brooklyn-Queens Expressway West, Woodside, NY 11377 • 1011 Chestnut Street, Burbank, CA 91506



Printed in U.S.A.

Konica

35mm f2.0 Automatic Wide Angle Hexanon Lens

Cat. No. 703-156



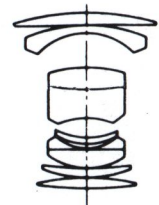
35mm



40mm



50mm



35mm f2.0

Key Features

- Fast f2.0 maximum aperture provides brighter viewfinder image and allows the use of faster shutter speeds as well as increasing the available light photography range.
- Only 2.2" long and weighing just 11.3 ounces.
- Fully automatic exposure control with open aperture, thru-the-lens (TTL) metering. Positive "AE Lock" prevents unintentional switching to manual operation.
- Manual operation with positive click stops at full apertures.
- Konica Color Dynamic Coating reduces flare and increases contrast and color saturation throughout the visible spectrum.
- Carrying case and lens hood included.
- Type M Front Case Extender available for use with standard Konica Camera Case.

Technical Specifications

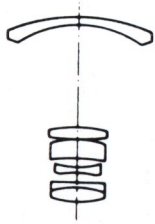
Focal Length 35mm
Aperture Range f2 - f16
Construction 9 Elements, 7 Groups
Angle of View 63°
Minimum Focus from Film Plane 11.8" (0.3m)
Coating Color Dynamic Coating
Length 2.2" (57mm)
Maximum Diameter 2.6" (65mm)
Weight 11.3 oz. (320g)
Filter 55mm
Lens Hood Included
Case Included

Specifications subject to change without notice

Konica

35mm f2.8 Automatic Wide Angle Hexanon Lens

Cat. No. 703-132



35mm f2.8



35mm



40mm



50mm

Key Features

- Critically sharp six element formula focuses to 11.8" from film plane.
- Only 2.2" long and weighing just 8.5 ounces.
- Fully automatic exposure control with open aperture, thru-the-lens (TTL) metering. Positive "AE Lock" prevents unintentional switching to manual operation.
- Manual operation with positive click stops at full apertures.
- Konica Color Dynamic Coating reduces flare and increases contrast and color saturation throughout the visible spectrum.
- Carrying case and lens hood included.
- Type M Front Case Extender available for use with standard Konica Camera Case.

Technical Specifications

Focal Length	35mm
Aperture Range	f2.8 - f16
Construction	6 Elements, 5 Groups
Angle of View	63°
Minimum Focus from Film Plane	11.8" (0.3m)
Coating	Color Dynamic Coating
Length	2.2" (57mm)
Maximum Diameter	2.5" (63mm)
Weight	8.5 oz. (240g)
Filter	.55mm
Lens Hood	Included
Case	Included

© Copyright 1980 Berkey Marketing Companies

Specifications subject to change without notice

Konica Division BERKEY MARKETING COMPANIES

25-20 Brooklyn-Queens Expressway West, Woodside, NY 11377 • 1011 Chestnut Street, Burbank, CA 91506



Printed in U.S.A.

Konica

40mm f1.8 Automatic Standard Hexanon Lens

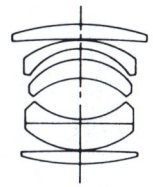
Cat. No. 703-140



40mm



50mm



40mm f1.8

Key Features

- Continuous focus from infinity to a close 18" from the film plane.
- Compact and lightweight — a mere 1.1" long and weighing only 4.9 ounces.
- Fully automatic exposure control with open aperture, thru-the-lens (TTL) metering. Positive "AE Lock" prevents unintentional switching to manual operation.
- Manual operation with positive click stops at full apertures.
- Konica Color Dynamic Coating reduces flare and increases contrast and color saturation throughout the visible spectrum.
- Fits standard case without the need for additional case extender.

Technical Specifications

Focal Length	40mm
Aperture Range	f1.8 - f22
Construction	6 Elements, 5 Groups
Angle of View	56°
Minimum Focus from Film Plane	18" (0.45m)
Coating	Color Dynamic Coating
Length	1.1" (27mm)
Maximum Diameter	2.5" (63mm)
Weight	4.9 oz. (140g)
Filter	55mm
Lens Hood	Available
Case	Available

© Copyright 1980 Berkey Marketing Companies

Specifications subject to change without notice

Konica Division **BERKEY MARKETING COMPANIES**

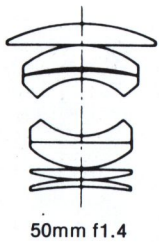
25-20 Brooklyn-Queens Expressway West, Woodside, NY 11377 • 1011 Chestnut Street, Burbank, CA 91506



Konica

50mm f1.4 Automatic Standard Hexanon Lens

Cat. No. 703-104



40mm



50mm

Key Features

- Extra fast f1.4 maximum aperture extends low light shooting capability.
- Focuses to 17.7" from the film plane.
- Only 1.8" long and weighing just 9.3 ounces.
- Fully automatic exposure control with open aperture, thru-the-lens (TTL) metering. Positive "AE Lock" prevents unintentional switching to manual operation.
- Manual operation with positive click stops at full apertures.
- Konica Color Dynamic Coating reduces flare and increases contrast and color saturation throughout the visible spectrum.
- Fits standard case without the need for additional case extender.

Technical Specifications

Focal Length	50mm
Aperture Range	f1.4 - f22
Construction	7 Elements, 6 Groups
Angle of View	46°
Minimum Focus from Film Plane	17.7" (0.45m)
Coating	Color Dynamic Coating
Length	1.8" (45mm)
Maximum Diameter	2.5" (64mm)
Weight	9.3 oz. (265g)
Filter	55mm
Lens Hood	Available
Case	Available

© Copyright 1980 Berkey Marketing Companies

Specifications subject to change without notice

Konica Division **BERKEY MARKETING COMPANIES**

25-20 Brooklyn-Queens Expressway West, Woodside, NY 11377 • 1011 Chestnut Street, Burbank, CA 91506



Printed in U.S.A.

Konica

50mm f1.7 Automatic Standard Hexanon Lens

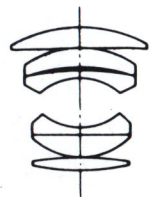
Cat. No. 703-107



40mm



50mm



50mm f1.7

Key Features

- Computer formulated six element construction.
- Focuses down to 21.7" from the film plane.
- Fully automatic exposure control with open aperture, thru-the-lens (TTL) metering. Positive "AE Lock" prevents unintentional switching to manual operation.
- Manual operation with positive click stops at full apertures.
- Konica Color Dynamic Coating reduces flare and increases contrast and color saturation throughout the visible spectrum.
- Fits standard case without the need for additional case extender.

Technical Specifications

Focal Length	50mm
Aperture Range	f1.7 - f16
Construction	6 Elements, 5 Groups
Angle of View	46°
Minimum Focus from Film Plane	21.7" (0.55m)
Coating	Color Dynamic Coating
Length	1.6" (40mm)
Maximum Diameter	2.5" (64mm)
Weight	7.4 oz. (210g)
Filter	55mm
Lens Hood	Available
Case	Available

© Copyright 1980 Berkey Marketing Companies

Specifications subject to change without notice

Konica Division **BERKEY MARKETING COMPANIES**

25-20 Brooklyn-Queens Expressway West, Woodside, NY 11377 • 1011 Chestnut Street, Burbank, CA 91506



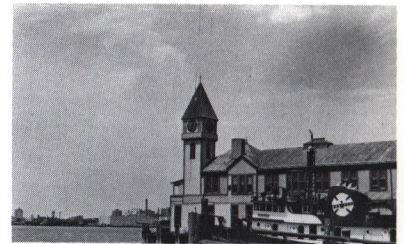
Konica

57mm f1.2 Automatic Standard Hexanon Lens

Cat. No. 703-212



57mm f1.2



57mm



40mm



50mm

Key Features

- Ultra fast f1.2 maximum aperture provides brighter viewfinder image for quick, accurate focusing while greatly extending shooting ability in low light situations.
- Focuses to 17.7" from film plane.
- Fully automatic exposure control with open aperture, thru-the-lens (TTL) metering. Positive "AE Lock" prevents unintentional switching to manual operation.
- Manual operation with positive click stops at full apertures.
- Konica Color Dynamic Coating reduces flare and increases contrast and color saturation throughout the visible spectrum.
- Type M Front Case Extender available for use with standard Konica Camera Case.

Technical Specifications

Focal Length	57mm
Aperture Range	f1.2 - f16
Construction	7 Elements, 6 Groups
Angle of View	42°
Minimum Focus from Film Plane	17.7" (0.45m)
Coating	Color Dynamic Coating
Length	2.0" (50mm)
Maximum Diameter	2.8" (72mm)
Weight	16.2 oz. (460g)
Filter62mm
Lens Hood	Available
Case	Available

© Copyright 1980 Berkey Marketing Companies

Specifications subject to change without notice

Konica Division **BERKEY MARKETING COMPANIES**

25-20 Brooklyn-Queens Expressway West, Woodside, NY 11377 • 1011 Chestnut Street, Burbank, CA 91506



Konica

85mm f1.8 Automatic Telephoto Hexanon Lens

Cat. No. 703-114



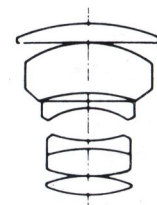
85mm



40mm



50mm



85mm f1.8

Key Features

- The pleasing, perspective offered by the 85mm focal length makes this the perfect portrait lens.
- High speed maximum aperture of f1.8 is ideally suited for available light photography.
- Fully automatic exposure control with open aperture, thru-the-lens (TTL) metering. Positive "AE Lock" prevents unintentional switching to manual operation.
- Manual operation with positive click stops at full apertures.
- Konica Color Dynamic Coating reduces flare and increases contrast and color saturation throughout the visible spectrum.
- Carrying case and lens hood included.
- Type M Front Case Extender available for use with standard Konica Camera Case.

Technical Specifications

Focal Length85mm
Aperture Rangef1.8 - f16
Construction6 Elements, 5 Groups
Angle of View28.5°
Minimum Focus from Film Plane39.4" (1m)
CoatingColor Dynamic Coating
Length2.6" (67mm)
Maximum Diameter2.6" (67mm)
Weight13.8 oz. (390g)
Filter55mm
Lens HoodIncluded
CaseIncluded

© Copyright 1980 Berkey Marketing Companies

Specifications subject to change without notice

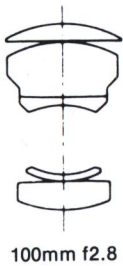
Konica Division **BERKEY MARKETING COMPANIES**
25-20 Brooklyn-Queens Expressway West, Woodside, NY 11377 • 1011 Chestnut Street, Burbank, CA 91506



Konica

100mm f2.8 Automatic Telephoto Hexanon Lens

Cat. No. 703-115



100mm



40mm



50mm

Key Features

- Compact 2.5" long and weighing only 10.2 ounces.
- Provides twice the image size of standard lenses.
- Fully automatic exposure control with open aperture, thru-the-lens (TTL) metering. Positive "AE Lock" prevents unintentional switching to manual operation.
- Manual operation with positive click stops at full apertures.
- Konica Color Dynamic Coating reduces flare and increases contrast and color saturation throughout the visible spectrum.
- Carrying case and lens hood included.
- Type M Front Case Extender available for use with standard Konica Camera Case.

Technical Specifications

Focal Length	100mm
Aperture Range	f2.8 - f16
Construction	.5 Elements, 4 Groups
Angle of View	24°
Minimum Focus from Film Plane	39.4" (1m)
Coating	Color Dynamic Coating
Length	2.4" (62mm)
Maximum Diameter	2.5" (63mm)
Weight	10.2 oz. (290g)
Filter	.55mm
Lens Hood	Included
Case	Included

© Copyright 1980 Berkey Marketing Companies

Specifications subject to change without notice

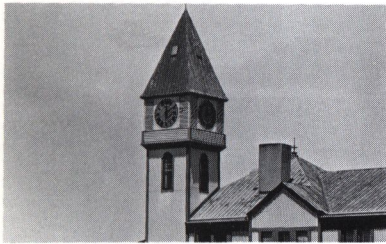
Konica Division **BERKEY MARKETING COMPANIES**
25-20 Brooklyn-Queens Expressway West, Woodside, NY 11377 • 1011 Chestnut Street, Burbank, CA 91506



Konica

135mm f2.5 Automatic Telephoto Hexanon Lens

Cat. No. 703-168



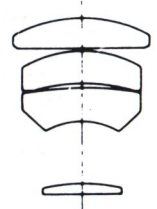
135mm



40mm



50mm



135mm f2.5

Key Features

- Fast maximum aperture of f2.5 is almost 30% faster than conventional f3.5 lenses greatly extending shooting ability in low light situations.
- Provides brighter viewfinder image for quick, accurate focusing.
- Positive full and half click stops from f2.5 to f16 for precise manual aperture control.
- Closest focus from film plane 47.2".
- Fully automatic exposure control with open aperture, thru-the-lens (TTL) metering. Positive "AE Lock" prevents unintentional switching to manual operation.
- Konica Color Dynamic Coating reduces flare and increases contrast and color saturation throughout the visible spectrum.
- Carrying case and lens hood included.
- Type L Front Case Extender available for use with standard Konica Camera Case.

Technical Specifications

Focal Length	135mm
Aperture Range	f2.5 - f16
Construction	4 Elements, 4 Groups
Angle of View	18°
Minimum Focus from Film Plane	47.2" (1.2m)
Coating	Color Dynamic Coating
Length	3.8" (96mm)
Maximum Diameter	2.7" (69mm)
Weight	22.9 oz. (650g)
Filter	62mm
Lens Hood	Built-in
Case	Included

© Copyright 1980 Berkey Marketing Companies

Specifications subject to change without notice

Konica Division **BERKEY MARKETING COMPANIES**

25-20 Brooklyn-Queens Expressway West, Woodside, NY 11377 • 1011 Chestnut Street, Burbank, CA 91506

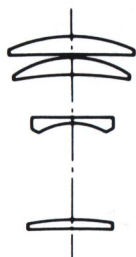


Printed in U.S.A.

Konica

135mm f3.5 Automatic Telephoto Hexanon Lens

Cat. No. 703-192



135mm f3.5



135mm



40mm



50mm

Key Features

- The most popular focal length in the telephoto group.
- Only 3.2" long and weighs only 11.1 ounces.
- Fully automatic exposure control with open aperture, thru-the-lens (TTL) metering. Positive "AE Lock" prevents unintentional switching to manual operation.
- Manual operation with positive click stops at full apertures.
- Konica Color Dynamic Coating reduces flare and increases contrast and color saturation throughout the visible spectrum.
- Carrying case and lens hood included.
- Type L Front Case Extender available for use with standard Konica Camera Case.

Technical Specifications

Focal Length 135mm
Aperture Range f3.5 - f22
Construction 4 Elements, 4 Groups
Angle of View 18°
Minimum Focus from Film Plane 59.1" (1.5m)
Coating Color Dynamic Coating
Length 3.2" (82mm)
Maximum Diameter 2.5" (63mm)
Weight 11.1 oz. (315g)
Filter 55mm
Lens Hood Built-in
Case Included

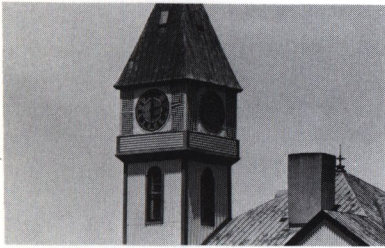
© Copyright 1980 Berkey Marketing Companies

Specifications subject to change without notice

Konica

200mm f4.0 Automatic Telephoto Hexanon Lens

Cat. No. 703-193



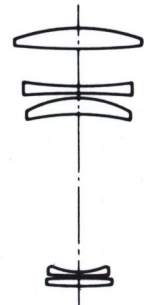
200mm



40mm



50mm



200mm f4.0

Key Features

- Compact construction ideally suited for hand held telephotography.
- Weighing only 18.2 ounces and just 4.8" long.
- Fully automatic exposure control with open aperture, thru-the-lens (TTL) metering. Positive "AE Lock" prevents unintentional switching to manual operation.
- Manual operation with positive click stops at full apertures.
- Konica Color Dynamic Coating reduces flare and increases contrast and color saturation throughout the visible spectrum.
- Carrying case and lens hood included.
- Type L Front Case Extender available for use with standard Konica Camera Case.

Technical Specifications

Focal Length	200mm
Aperture Range	f4 - f22
Construction	5 Elements, 5 Groups
Angle of View	12°
Minimum Focus from Film Plane	8.2' (2.5m)
Coating	Color Dynamic Coating
Length	4.8" (121mm)
Maximum Diameter	2.6" (65.5mm)
Weight	18.2 oz. (515g)
Filter	.55mm
Lens Hood	Built-in
Case	Included

© Copyright 1980 Berkey Marketing Companies

Specifications subject to change without notice

Konica Division **BERKEY MARKETING COMPANIES**

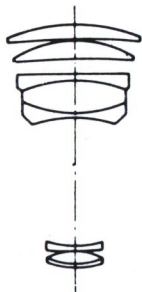
25-20 Brooklyn-Queens Expressway West, Woodside, NY 11377 • 1011 Chestnut Street, Burbank, CA 91506



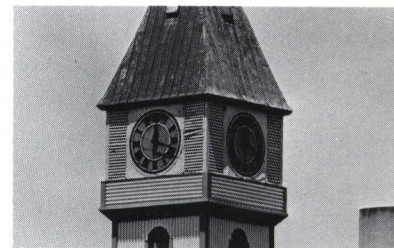
Konica

300mm f4.5 Automatic Telephoto Hexanon Lens

Cat. No. 703-151



300mm f4.5



300mm



40mm



50mm

Key Features

- One of the smallest and lightest lenses in its class making it ideally suited for action, sports and wildlife photography.
- Delivers a magnification of 6-7½ times that of a standard lens.
- Fully automatic exposure control with open aperture, thru-the-lens (TTL) metering. Positive "AE Lock" prevents unintentional switching to manual operation.
- Manual operation with positive click stops at full apertures.
- Konica Color Dynamic Coating reduces flare and increases contrast and color saturation throughout the visible spectrum.
- Carrying case and lens hood included.

Technical Specifications

Focal Length	300mm
Aperture Range	f4.5 - f16
Construction	8 Elements, 5 Groups
Angle of View	8°
Minimum Focus from Film Plane	13.1' (4m)
Coating	Color Dynamic Coating
Length	6.6" (168mm)
Maximum Diameter	3.2" (80mm)
Weight	34 oz. (965g)
Filter	72mm
Lens Hood	Built-in
Case	Included

© Copyright 1980 Berkey Marketing Companies

Specifications subject to change without notice

Konica Division BERKEY MARKETING COMPANIES

25-20 Brooklyn-Queens Expressway West, Woodside, NY 11377 • 1011 Chestnut Street, Burbank, CA 91506

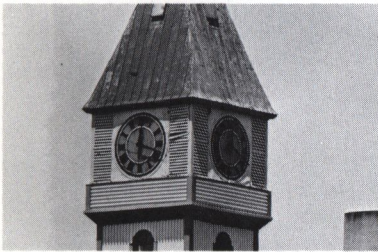


Printed in U.S.A.

Konica

300mm f6.3 Automatic Telephoto Hexanon Fluorite Lens

Cat. No. 703-155



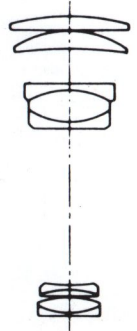
300mm



40mm



50mm



300mm f6.3

Key Features

- Use of laboratory grown, crystal fluorite elements provides ultra light weight and compact size — weighs only 19.8 ounces and is only 5.7" long.
- Special optical glass "flat", precisely ground and polished, provides ultimate protection for sensitive fluorite crystals.
- Fully automatic exposure control with open aperture, thru-the-lens (TTL) metering. Positive "AE Lock" prevents unintentional switching to manual operation.
- Manual operation with positive click stops at full apertures.
- Konica Color Dynamic Coating reduces flare and increases contrast and color saturation throughout the visible spectrum.
- Carrying case included.

Technical Specifications

Focal Length	300mm
Aperture Range	f6.3 - f22
Construction	9 Elements, 5 Groups
Angle of View	8°
Minimum Focus from Film Plane	14.8' (4.5m)
Coating	Color Dynamic Coating
Length	5.7" (146mm)
Maximum Diameter	2.6" (65mm)
Weight	19.8 oz. (560g)
Filter	.55mm
Lens Hood	Built-in
Case	Included

© Copyright 1980 Berkey Marketing Companies

Specifications subject to change without notice

Konica Division **BERKEY MARKETING COMPANIES**

25-20 Brooklyn-Queens Expressway West, Woodside, NY 11377 • 1011 Chestnut Street, Burbank, CA 91506



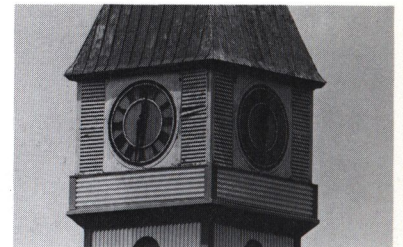
Konica

400mm f5.6 Automatic Ultra Telephoto Hexanon UC Lens

Cat. No. 703-178



400mm f5.6



400mm



40mm



50mm

Key Features

- Smaller and lighter than most lenses in this focal length makes this the ideal lens for sports, wildlife and news events.
- Only 8.5" long and weighing just 56 ounces.
- Provides 8-10 times the magnification of a standard lens.
- Fully automatic exposure control with open aperture, thru-the-lens (TTL) metering. Positive "AE Lock" prevents unintentional switching to manual operation.
- Manual operation with positive click stops at full apertures.
- Konica Color Dynamic Coating reduces flare and increases contrast and color saturation throughout the visible spectrum.
- Carrying case included.

Technical Specifications

Focal Length	400mm
Aperture Range	f5.6 - f45
Construction	9 Elements, 5 Groups
Angle of View	6°
Minimum Focus from Film Plane	13.1' (4m)
Coating	Color Dynamic Coating
Length	8.5" (217mm)
Maximum Diameter	3.3" (83mm)
Weight	56 oz. (1600g)
Filter	77mm
Lens Hood	Built-in
Case	Included

© Copyright 1980 Berkey Marketing Companies
Specifications subject to change without notice

Konica Division **BERKEY MARKETING COMPANIES**

25-20 Brooklyn-Queens Expressway West, Woodside, NY 11377 • 1011 Chestnut Street, Burbank, CA 91506



Printed in U.S.A.

Konica

35-70mm f3.5 Automatic Zoom Hexanon Lens

Cat. No. 703-172



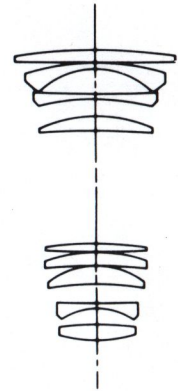
35mm



70mm



40mm



35-70mm f3.5

Key Features

- One touch zoom and focus control allows for quick composition and focus adjustment.
- Continuous focus to a close 14" from the film plane without having to mechanically change to close focus position.
- Overall length of only 3.8" and weighing only 16.6 ounces.
- 35-70mm focal length provides wide angle to medium telephoto range.
- Unique built-in lens hood automatically extends as the lens is zoomed towards 70mm and retracts when zoomed towards 35mm.
- Fully automatic exposure control with open aperture, thru-the-lens (TTL) metering. Positive "AE Lock" prevents unintentional switching to manual operation.
- Manual operation with positive click stops at full apertures.
- Konica Color Dynamic Coating reduces flare and increases contrast and color saturation throughout the visible spectrum.
- Carrying case included.
- Type L Front Case Extender available for use with standard Konica Camera Case.

Technical Specifications

Focal Length	35 - 70mm
Aperture Range	f3.5 - f22
Construction	9 Elements, 9 Groups
Angle of View	63° - 34°
Minimum Focus from Film Plane	1.2' (0.35m)
Coating	Color Dynamic Coating
Length	3.8" (96mm)
Maximum Diameter	2.6" (67mm)
Weight	16.6 oz. (470g)
Filter	55mm
Lens Hood	Built-in
Case	Included

© Copyright 1980 Berkey Marketing Companies

Specifications subject to change without notice

Konica Division **BERKEY MARKETING COMPANIES**

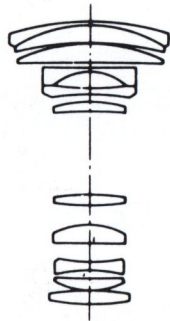
25-20 Brooklyn-Queens Expressway West, Woodside, NY 11377 • 1011 Chestnut Street, Burbank, CA 91506



Konica

45-100mm f3.5 Automatic Macro Zoom Hexanon UC Lens

Cat. No. 703-175



45-100mm f3.5



45mm



100mm



40mm

Key Features

- Fast, one touch zoom and focus control.
- Two way focusing system permits film plane to subject distances as close as 13.8".
- Provides magnification ratio of 0.25x or one-fourth life size.
- Unique retractable construction reduces overall length to just 3.3" in storage position.
- Fully automatic exposure control with open aperture, thru-the-lens (TTL) metering. Positive "AE Lock" prevents unintentional switching to manual operation.
- Manual operation with positive click stops at full apertures.
- Konica Color Dynamic Coating reduces flare and increases contrast and color saturation throughout the visible spectrum.
- Carrying case included.
- Type L Front Case Extender available for use with standard Konica Camera Case.

Technical Specifications

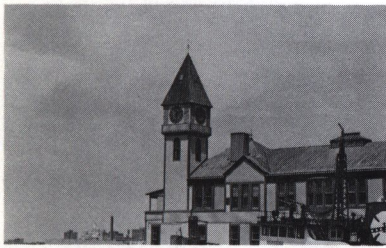
Focal Length	45 - 100mm
Aperture Range	f3.5 - f16
Construction	11 Elements, 10 Groups
Angle of View	52° - 24°
Minimum Focus from Film Plane	13.8" (0.35m)
Coating	Color Dynamic Coating
Length	3.3" (85mm)
Maximum Diameter	2.8" (70mm)
Weight	20.1 oz. (570g)
Filter	55mm
Lens Hood	Built-in
Case	Included

© Copyright 1980 Berkey Marketing Companies
Specifications subject to change without notice

Konica

80-200mm f4.0 Automatic Macro Zoom Hexanon UC Lens

Cat. No. 703-177



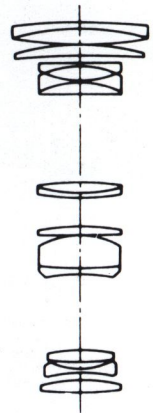
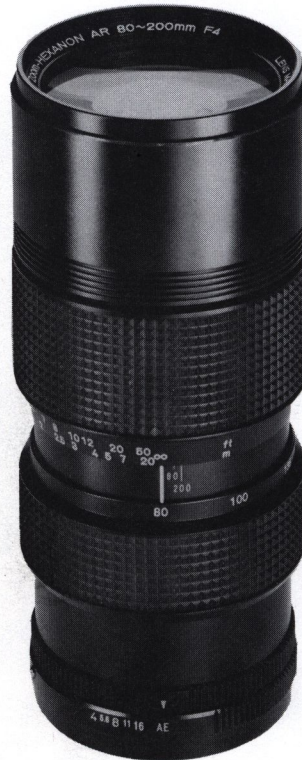
80mm



200mm



40mm



80-200mm f4.0

Key Features

- Continuous focusing from infinity to as close as 2.3' from the film plane. No need for mechanical change normal zoom to macro.
- Provides up to one-half life size reproduction at 200mm position covering a subject area as small as 1.8"x2.7" and without refocusing can be zoomed to 80mm position to cover an area of 4.7"x7.1" or one-fifth life size.
- Compact and lightweight — only 6.2" long and 29.3 ounces in weight.
- Positive full and half click stops from f4 to f16 for precise manual aperture control.
- Fully automatic exposure control with open aperture, thru-the-lens (TTL) metering. Positive "AE Lock" prevents unintentional switching to manual operation.
- Konica Color Dynamic Coating reduces flare and increases contrast and color saturation throughout the visible spectrum.
- Carrying case included.

Technical Specifications

Focal Length	80 - 200mm
Aperture Range	f4 - f16
Construction	14 Elements, 10 Groups
Angle of View	30° - 12°
Minimum Focus from Film Plane	2.3' (0.7m)
Coating	Color Dynamic Coating
Length	6.2" (157mm)
Maximum Diameter	2.7" (68mm)
Weight	29.3 oz. (830g)
Filter62mm
Lens Hood	Built-in
Case	Included

© Copyright 1980 Berkey Marketing Companies

Specifications subject to change without notice

Konica Division **BERKEY MARKETING COMPANIES**

25-20 Brooklyn-Queens Expressway West, Woodside, NY 11377 • 1011 Chestnut Street, Burbank, CA 91506



Konica

Automatic 2X Flat Field Teleconverter

Cat. No. 705-124



Key Features

- Doubles the focal length of Konica zoom and fixed focal length lenses. Ideal for scenics, nature photos, sports action close-ups.
- Free of field curvature. Provides edge-to-edge sharpness and precise horizontal and vertical parallels.
- Konica Color Dynamic multi-coated optics maintain the contrast, resolution and sharpness of the Konica lens it is used with. Maintains close focus capabilities.
- Attaches instantly to Konica SLR Cameras. Quick change standard bayonet mount permits precision coupling of camera body to teleconverter and teleconverter to lens.
- Best suited for use with lenses of focal lengths of 100mm or longer. When used with lenses under 100mm, working aperture of f5.6 or smaller is suggested.
- Compatible with automatic (AE) or manual exposure operation. When using the Konica 2X Flat Field Teleconverter and lens in AE mode, camera automatically adjusts for correct exposure (automatic aperture compensation).
- Weighing 8 ounces and less than 2" in length, the Konica 2X Flat Field teleconverter is a compact and versatile accessory.
- Carrying case included.

Technical Specifications

Magnification	Double (2X)
Construction	6 elements, 5 groups
Exposure Factor	Two f/stops
Aperture System	AE type, fully auto and manual
Length	1.7" (43mm)
Maximum Diameter	2.5" (63mm)
Weight	8.1 oz. (230g)
Finish	Black

© Copyright 1980 Berkey Marketing Companies

Specifications subject to change without notice

Konica Division **BERKEY MARKETING COMPANIES**

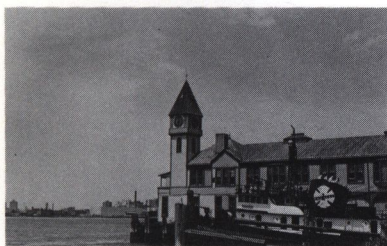
25-20 Brooklyn-Queens Expressway West, Woodside, NY 11377 • 1011 Chestnut Street, Burbank, CA 91506



Konica

55mm f3.5 Automatic Macro Hexanon Lens

Cat. No. 703-152



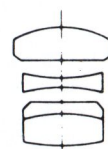
55mm



40mm



50mm



55mm f3.5

Key Features

- Provides magnification ratio of 1:2 or half life size. With special 1x adapter (supplied with lens) the magnification ratio is 1:1 or exact life size. All while still retaining full automatic exposure control.
- Continuous focusing from infinity to 9.8" from the film plane.
- Ideally suited for use as standard lens.
- Full and half click stops for precise manual aperture control.
- Fully automatic exposure control with open aperture, thru-the-lens (TTL) metering. Positive "AE Lock" prevents unintentional switching to manual operation.
- Manual operation with positive click stops at full apertures.
- Konica Color Dynamic Coating reduces flare and increases contrast and color saturation throughout the visible spectrum.
- Carrying case included.
- Type M Front Case Extender available for use with standard Konica Camera Case.

Technical Specifications

Focal Length	55mm
Aperture Range	f3.5 - f22
Construction	4 Elements, 3 Groups
Angle of View	43°
Minimum Focus from Film Plane	9.8" (0.25m)
Coating	Color Dynamic Coating
Length	2.4" (60mm)
Maximum Diameter	2.5" (64mm)
Weight	10.2 oz. (290g)
Filter	55mm
Lens Hood	Built-in
Case	Included

© Copyright 1980 Berkey Marketing Companies
Specifications subject to change without notice

Konica Division BERKEY MARKETING COMPANIES
25-20 Brooklyn-Queens Expressway West, Woodside, NY 11377 • 1011 Chestnut Street, Burbank, CA 91506

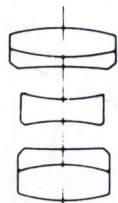


Printed in U.S.A.

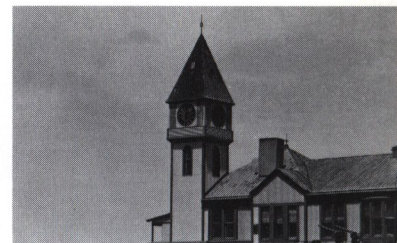
Konica

105mm f4.0 Automatic Macro Hexanon Lens

Cat. No. 703-158



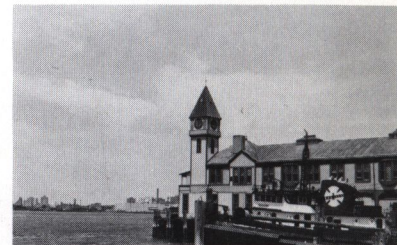
105mm f4.0



105mm



40mm



50mm

Key Features

- Designed to be used in conjunction with the Konica Auto Bellows allowing full automatic diaphragm operation.
- Extended focal length provides longer camera to subject distances.
- Provides continuous focusing from infinity to 1.3x when used on bellows.
- Fully automatic exposure control with open aperture, thru-the-lens (TTL) metering. Positive "AE Lock" prevents unintentional switching to manual operation.
- Manual operation with positive click stops at full apertures.
- Konica Color Dynamic Coating reduces flare and increases contrast and color saturation throughout the visible spectrum.
- Carrying case included.
- Type M Front Case Extender available for use with standard Konica Camera Case.

Technical Specifications

Focal Length	105mm
Aperture Range	f4 - f22
Construction	5 Elements, 3 Groups
Angle of View	23°
Minimum Focus from Film Plane	Depends on bellows extension length
Coating	Color Dynamic Coating
Length	1.9" (47mm)
Maximum Diameter	2.5" (63mm)
Weight	8.1 oz. (230g)
Filter	.55mm
Lens Hood	Available
Case	Included

© Copyright 1980 Berkey Marketing Companies
Specifications subject to change without notice