

Kodak

films, plates, and papers.....



for the professional

DURING the more than half a century that Kodak films have been manufactured, they have established for themselves an enviable reputation.

Their pre-eminent position in the world of sensitized products for use in cameras is based on such points of superiority as their reliable uniformity, their resistance to abrasion provided by their anti-abrasion overcoating, their surface treatment to permit easier retouching, their extremely good antihalation characteristics, and the protection against moisture and harmful vapors given them by their careful packaging in "Metalam foil."

These desirable features are common to the entire line of Kodak Professional Films—sixteen in all—films for every conceivable application. A description of each type is given here.

Kodak Royal Pan Film
Kodak Super Panchro-Press Film, Type B
Kodak Super-XX Panchromatic Film
Kodak Tri-X Panchromatic Film
Kodak Portrait Panchromatic Film
Kodak Panatomic-X Film
Kodak Royal Ortho Film
Kodak Super-Speed Ortho Portrait Film
Kodak Commercial Film
Kodak Commercial Matte Film
Kodak Commercial Ortho Film
Kodak Contrast Process Ortho Film
Kodak Contrast Process Panchromatic Film
Kodak Gravure Copy Film
Kodak Fine Grain Positive Film
Kodak Infrared Film

In the descriptions of the panchromatic Kodak films that follow, reference is made to "Type B" and "Type C." These designations apply to their kind of panchromatic sensitizing.

Type B films have about the same sensitivity to green and red light as the human eye. Therefore, such films record colors in approximately the same relative brightness as the colors appear to the eye.

Type C films have somewhat greater red sensitivity.

Kodak Royal Pan Film. A remarkable new film incorporating a giant forward step in basic emulsion-making science: great speed with no increase in graininess. Royal Pan Film has an inherent ability to re-

cord shadow detail while simultaneously achieving excellent highlight separation. It has extraordinary exposure latitude. And it minimizes the danger of excessive contrast caused by development errors.

Royal Pan has an A.S.A. rating of 200 for daylight; for tungsten light, 160. But, under certain conditions, it has been used at ratings several times these.

A film of similar characteristics, marketed in 120 and 620 rolls, 36-exposure 35mm cassettes, and 4 x 5 film packs, is known as "Kodak Tri-X Film."

Kodak Super Panchro-Press Film, Type B, is one of the most versatile films in the Kodak line. It is equally popular with portrait, commercial, and press photographers. It has high speed, excellent color balance, and wide latitude in both exposure and development. Super Panchro-Press, Type B, performs equally well with daylight, tungsten, fluorescent, electronic flash, and photoflash lamp illumination.

Kodak Super-XX Panchromatic Film is a high-speed, Type B panchromatic film having fine grain and wide exposure and development latitude. It is an excellent film for all-round use in both portrait and commercial photography. Super-XX is the recommended film for color-separation negatives.

Kodak Tri-X Panchromatic Film is faster than Super Panchro-Press, Type B, with either daylight or artificial light. It has a Type C sensitizing, excellent quality, and the ability to produce fine negatives over a wide range of lighting contrast. It is useful for work with models or other subjects requiring short exposures. It is also a popular portrait film.

Kodak Portrait Panchromatic Film is a very popular film for portrait work. The Type B sensitizing of this film gives correct rendering of delicate flesh tones even with the high red content of clear tungsten light. Portrait Panchromatic is also popular as a medium-speed film for commercial photography.

Kodak Panatomic-X Film is an extremely fine-grain film of highest quality. It has a brilliant Type B emulsion of moderate speed, especially suitable for commercial photography indoors or outdoors. The extremely fine grain of this film recommends it for original and copy negatives to be used for photo-murals and other large-scale prints. In addition to

its use as a copy film, it is also excellent for making intermediate positives and duplicate negatives.

Kodak Royal Ortho Film. A top-quality film for all work requiring a fine negative material of orthochromatic sensitivity. It is equally well suited to portrait, commercial, and press photography. It has a daylight A.S.A. rating of 200; its tungsten rating is 125.

Among its features are: minimized blocking of highlights, a tungsten speed higher than that of many fine panchromatic films, and excellent exposure and development latitude.

Kodak Super-Speed Ortho Portrait Film is a popular, medium-speed orthochromatic film having a long scale of gradation—especially desirable in portraiture. The long scale of this film gives good tonal separation in both highlights and deep shadows. Super-Speed Ortho is a flexible material adaptable to a wide range of studio work, including copying.

Kodak Commercial, Kodak Commercial Matte, Kodak Commercial Ortho Films. These films have emulsions of medium speed, capable of giving brilliant negatives. They are especially suitable for copying continuous-tone subjects and for general commercial work wherever panchromatic sensitizing is not required. Commercial Film is blue sensitive only and is useful for copying black-and-white originals and photographs. It is also widely used for making intermediate positives and duplicate negatives. Commercial Matte is similar to Commercial but has a matte emulsion and a matte back to permit pencil retouch-

ing on either side without using retouching fluid. Commercial Ortho is useful for copying both black-and-white as well as colored continuous-tone originals, for photographing light-colored furniture, and for other commercial photography.

Kodak Contrast Process Ortho, Kodak Contrast Process Panchromatic Films. These films have extremely high contrast and fine grain and are intended for making line copies. They render sharp separation of light and dark tones and produce extremely clear lines. Contrast Process Ortho is useful for copying black-and-white originals and certain types of colored copy, such as telegrams, maps, and drawings—where yellow, green, or blue-green hues predominate. This film can be used with any of the yellow filters. Contrast Process Panchromatic is sensitive to all colors and is recommended for copying colored originals such as maps, drawings, or documents which have been drawn or printed with colored inks, and for photographing faded originals of low contrast. All filters can be used with this film.

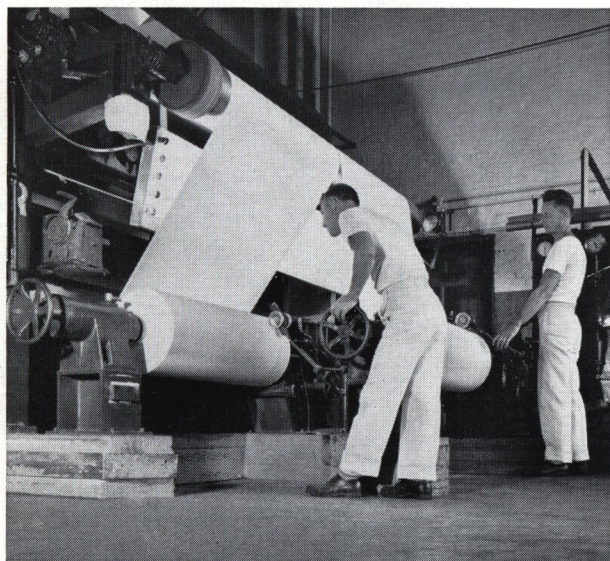
Kodak Gravure Copy Film is ideal for copying all continuous-tone material. It has the desirable characteristic of producing great highlight contrast in copy negatives, especially those of photographic prints. Although well suited for the Gravure industry, this film's characteristics make it of interest to professional and commercial photographers and others engaged in copying photographic prints.

Kodak Fine Grain Positive Film is characterized by a low-speed, positive-type emulsion. It is especially recommended for printing positive transparencies from continuous-tone negatives, but can also be used for copying black-and-white originals.

Kodak Infrared Film is for very specialized work or unusual effects. It has moderately high contrast and by suitable development can be used for landscape, commercial, medical, and documentary photography and for certain types of scientific photography and photomicrography. To obtain the infrared effects, a filter must be used to cut out visible light so that the exposure will be made entirely by infrared. One filter that is recommended is the Wratten A (No. 25—red). With this filter, the average exposure in summer sunlight is about 1/25 second at $f/8$.

Electronic Flash or Kodatron-Type Illumination.

With the increasing popularity of electronic flash illumination for portrait and commercial photography, photographers often ask which Kodak film is the best for this type of illumination. All Kodak films can be used successfully with electronic flash



After manufacture, a wide roll of paper base is inspected while being slit and rewound for subsequent operations.



and will produce excellent-quality negatives when correctly exposed and developed. Kodak Super-XX and Kodak Super Panchro-Press, Type B, Films are the two most popular films for use with electronic flash, since they have sufficient speed for most general conditions and give brilliant negatives in rea-

Kodak Plates

THROUGH the years Kodak plates have established high standards for their uniform, fine quality. Their reputation has been brought about largely by ceaseless effort to improve them with features that enable them to do significantly better work.

All Kodak plates have an antihalation backing, and that used on Kodak Panchromatic Plates is neutral—absorbing all colors equally. This fits them especially well for use in color reproduction work.

Kodak plates for camera use in sizes through 11 x 14 inches are heat-sealed in a high-grade moisture-vapor barrier which effectively protects the emulsion from the effects of moisture and harmful vapors.

Coated on carefully selected glass, Kodak plates have special value for those applications that demand exact size in the negative image.

In addition to those described on the following pages, many plates are made by Kodak for use in spectrography, astronomy, and research. Information regarding the scientific uses of such materials is available from the Special Products Sales Division, Eastman Kodak Company, Rochester 4, N. Y.

Kodak Tri-X Panchromatic Plate, Type B
Kodak Tri-X Panchromatic Plate, Type B, Matte
Kodak Separation Negative Plate, Type 1
Kodak Separation Negative Plate, Type 1, Matte
Kodak Super Panchro-Press Plate
Kodak 50 Plate
Kodak Super Ortho-Press Plate
Kodak 33 Plate
Kodak 33 Matte Plate
Kodak Process Plate
Kodak Panchromatic Plate
Kodak Panchromatic Matte Plate
Kodak M Plate
Kodak Metallographic Plate
Kodak Lantern Slide Plates

sonable developing times. Where more speed is required, the photographer can choose Kodak Royal Pan or Kodak Tri-X Panchromatic. If less speed is required, Kodak Portrait Panchromatic, Kodak Panatomic-X, or Kodak Super-Speed Ortho Portrait Film should be chosen.

In the descriptions that follow of the panchromatic Kodak plates, all are referred to as "Type B" except the Kodak Super Panchro-Press Plate. This designation applies to the kind of panchromatic sensitizing used.

Type B plates have about the same sensitivity to green and red as the human eye. Therefore, such plates record colors in approximately the same relative brightness as the colors appear to the eye.

In the Kodak Super Panchro-Press Plate, a Type C sensitizing is used which gives this plate somewhat greater sensitivity to red light.

Kodak Tri-X Panchromatic Plate, Type B **Kodak Tri-X Panchromatic Plate, Type B, Matte**

These are extremely fast, Type B panchromatic plates. Their long scale and high speed make them adaptable to commercial illustrative photography and portraiture. Tri-X Plates are used for color-separation negatives in some one-shot cameras.

Kodak Tri-X Panchromatic Plate, Type B, Matte, has a matte emulsion which permits pencil retouching without retouching fluid.

Kodak Separation Negative Plate, Type 1 **Kodak Separation Negative Plate, Type 1, Matte**

These are Type B panchromatic plates primarily intended for use in making color-separation negatives in both photomechanical and photographic methods of color printing. They are suitable for making low-contrast corrective masks. Their long scale also makes them adaptable to commercial and illustrative photography.

Kodak Separation Negative Plate, Type 1, Matte, has a matte emulsion which permits pencil retouching without retouching fluid.

Kodak Super Panchro-Press Plate. A very fast, Type C panchromatic plate, quite satisfactory for color-separation negatives made directly from the subject in one-shot cameras which require plates having high red sensitivity. It is also suitable for press work and for general use under adverse lighting conditions whenever high emulsion speed and brilliant negatives are required.

Kodak 50 Plate. A medium-speed, orthochromatic plate, giving moderate contrast and a long scale of gradation. It has sufficient speed and pleasing color rendition for studio or home portraits requiring short exposures under artificial light.

Kodak Super Ortho-Press Plate. A high-speed, orthochromatic plate, intended primarily for presswork. It is also suitable for commercial and illustrative uses requiring high speed and brilliant negatives. Its orthochromatic sensitivity aids in securing good rendering of flesh tones in photoflash pictures.

Kodak 33 Plate

Kodak 33 Matte Plate

A fine-grain, blue-sensitive plate of moderate speed and moderately high contrast, suitable for copying continuous-tone subjects, for duplicating by means of an intermediate step, and for making transparent positives from color-separation negatives in photomechanical reproduction work.

Kodak 33 Matte Plate is the same product with a matte surface for retouching.

Kodak Process Plate. A slow, blue-sensitive plate of fine grain and high contrast, suitable for reproducing line drawings, tracings, plans, and written or printed matter, and for other types of work requiring high-contrast negatives or positive transparencies of black-and-white subjects.

Kodak Panchromatic Plate

Kodak Panchromatic Matte Plate

These plates have moderately high contrast, Type B panchromatic sensitizing, and medium speed and graininess. They are used for making color-separation negatives in both photomechanical and photo-

graphic methods of color printing. They are suitable for copying all types of colored continuous-tone originals, and for other commercial work requiring filters, but not high emulsion speed.

The Kodak Panchromatic Matte Plate has a matte emulsion which permits pencil retouching without retouching fluid.

Kodak M Plate. A plate of Type B panchromatic sensitivity and high resolving power which can be used to produce a wide range of contrasts by suitable development. It is, therefore, particularly adapted for general use in photomicrography, spectroscopy, and other types of scientific work.

Kodak Metallographic Plate. An orthochromatic plate of high green sensitivity and high resolving power, particularly useful for obtaining negatives of high contrast. It can also be made to produce a wide range of contrasts by suitable development. It is, therefore, particularly adapted to use in photomicrography. This plate has unusually high sensitivity in that region of the spectrum transmitted by the green filters used in metallography and which gives the best definition with achromatic objectives.

Kodak Lantern Slide Plates. These are extremely fine-grain, blue-sensitive plates for making transparencies for projection. The Medium and Contrast Plates provide a range of contrasts to suit all negatives that produce good prints on any of the various contrast grades of paper. The Medium Plate is for negatives of normal to high contrast. The Contrast Plates are for line subjects as well as continuous-tone negatives of low contrast. The Anti-Abrasion Contrast Plate has a protective layer over the emulsion to reduce the possibility of abrasion markings.

Kodak

Papers

KODAK CONTACT PAPERS

Kodak Athena Paper is a contact printing paper of portrait quality, producing prints of warmth, brilliance, and fine gradation. It is supplied only in double weight but in four printing grades. Athena tones beautifully to a brown or sepia color in either

Kodak Gold Toner T-21 or Kodak Selenium Toner.

Kodak Velox Paper is a fast contact printing paper particularly suited to photofinishing because of its wide latitude and cold blue-black tone. This tone is universal throughout all six printing grades.

Kodak Azo Paper is a widely used contact printing paper for commercial and photofinishing work. Its six printing grades suit negatives of widely differing contrast ranges. Prints made on Azo have a cold tone. For brown tones, Azo can be toned in Kodak Hypo-Alum Toner T-1a or Kodak Brown Toner.

Kodak Illustrators' Azo Paper is a contact printing paper of moderate warmth, designed primarily for the requirements of the illustrator and the commercial photographer. It tones well in Kodak Brown Toner.

Kodak Aristo Paper is a contact printing paper of moderate warmth intended expressly for contact printing of portraits. It is available in four printing grades, double weight, and tones attractively in Kodak Brown Toner.

Kodak Ad-Type Paper has the same speed as Azo, but the emulsion is coated on smooth, lightweight white stock, which can be folded without cracking. Ad-Type is popular for folded greeting cards. It is supplied only in the "A" surface, in up to six printing grades.

Kodak Resisto Paper is intended for jobs that require fast print service or moderately close size maintenance. It can be processed in about seven minutes. These features are due to a water-resistant paper base. Furnished in one surface and four printing grades.

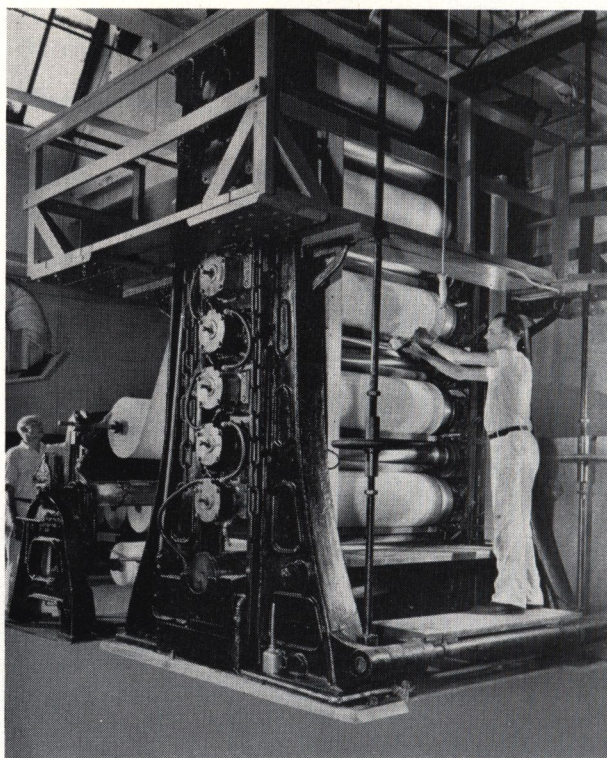
Kodak Studio Proof Paper is a smooth, single-weight gelatin printing-out paper for printing by sunlight or arc light. The depth of printing is judged by visual examination, and the reddish image is not permanent.

KODAK ENLARGING PAPERS

Kodak Ektalure Paper is approximately twice the speed of Kodak Opal Paper. It produces a warm image by direct development in Kodak Selectol Developer, and tones well in Kodak Selenium, Kodak Brown, and Kodak T-21 Toners. The surface of Ektalure Paper G is especially adapted to coloring with oils. Shadow areas tend to remain open and clean.

Kodak Opal Paper has warmth of tone and a long gradation scale which make it favored by portrait photographers. While not in the high-speed class, Opal has sufficient speed for enlarging with the usual projection printers and, with reduced illumination, can be used for contact printing. It is supplied in one printing grade—for normal negatives. For very warm tones, Opal can be toned in Kodak Gold Toner T-21, Kodak Selenium Toner, or Kodak Brown Toner. The "G" surface is especially adapted to coloring with oils.

Kodak Medalist Paper is a fine-quality, all-purpose enlarging paper. Its high speed is essentially the same throughout all four printing grades. It has a

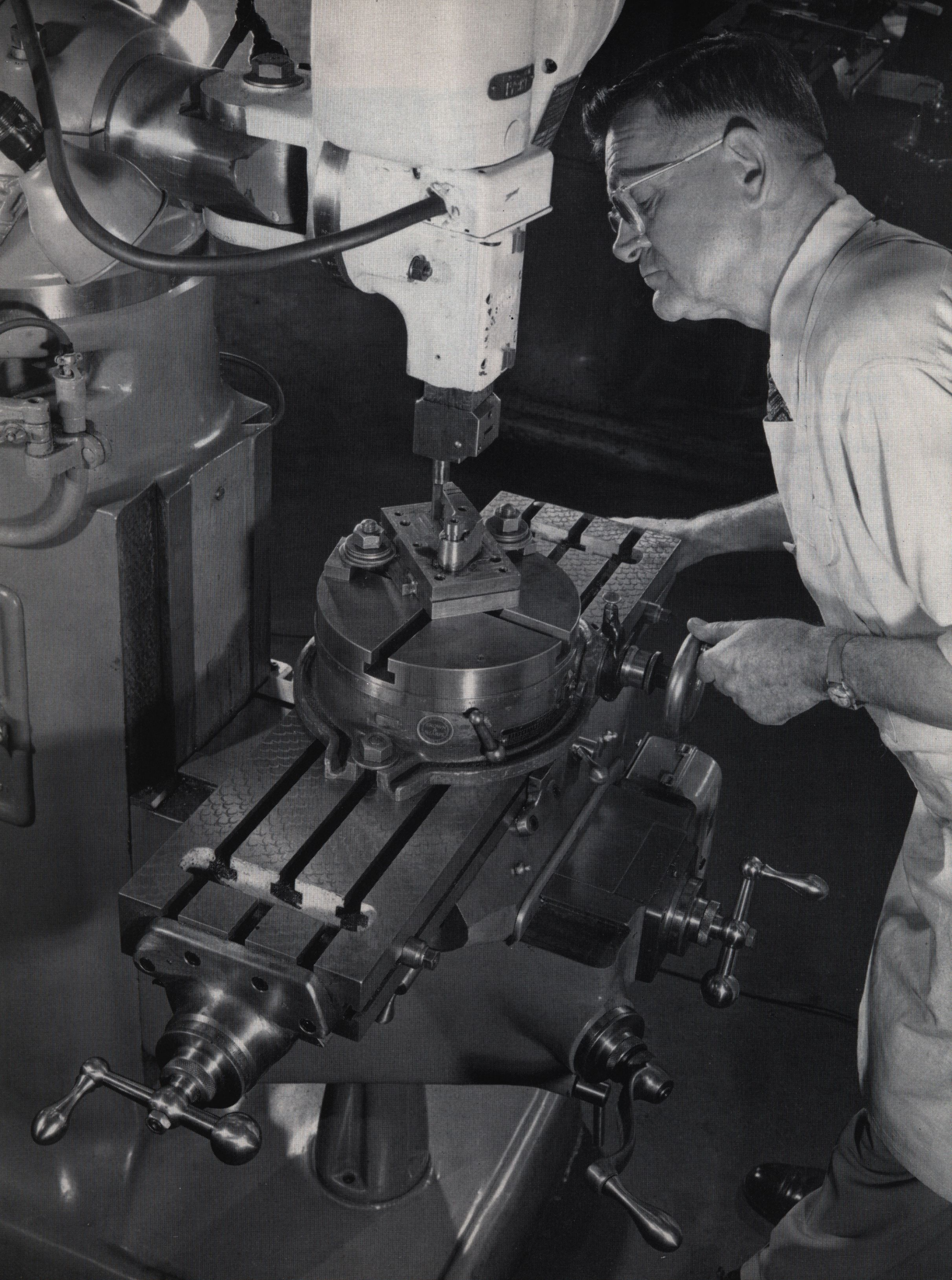


To produce a surface of uniform color and texture, Kodak Photographic Papers are coated with "baryta" (barium sulfate), then calendered to produce a smooth surface.

new kind of exposure and development latitude that makes it possible to obtain "in-between" contrasts—to wring the best from every negative. Kodak Medalist Paper handles beautifully in standard toners like Kodak Brown, Kodak Sepia, and Kodak Blue Toners, as well as in hypo-alum.

Kodak Illustrators' Special Paper has a full-scale, brilliant emulsion of Ektalure quality and speed, coated on a pure white stock. It is especially popular with commercial illustrators for reproduction purposes. It is supplied in one printing grade and only in the "E" surface, ideal for retouching and other art work.

Kodabromide Paper is a fast enlarging paper of exceptional quality. It possesses remarkable exposure and development latitude which materially reduces the percentage of discards. Its rich black tone is uniform through all five printing grades and remains so over a wide range of processing conditions. Kodabromide is widely used for studio, commercial, press, photofinishing, and exhibition prints. Single weight "F" is excellent for news pictures and withstands the rough treatment of rush handling. Kodabromide can be toned brown in Kodak Sepia Toner or in toner formula T-7a.



Kodagraph Papers for document and drawing reproduction. Kodak supplies a special brand of papers, known as "Kodagraph," for every conceivable document and drawing reproduction requirement. Information is available from the Industrial Photo Sales Division, Eastman Kodak Company, Rochester 4, N. Y.

Kodak Velox Rapid Paper is designed for Velox Rapid Printer or similar optical printers. It is faster than Velox and enables the photofinisher to produce oversize prints of the same tone quality as Velox contact prints.

Kodak Resisto Rapid Paper, like Resisto, is intended for jobs that require fast print service or moderately close size maintenance. It can be processed completely in about seven minutes. Its speed of processing and moderately high dimensional stability are due to a low-shrink, water-resistant paper base. Resisto Rapid is available in four printing grades.

Kodak Portrait Proof Paper is a medium-rough, single-weight developing-out paper having about the same speed as Ektalure. It is for making proofs by contact with reduced illumination, or by projection. Its surface texture, which gives pleasing proofs with a minimum of retouching, has made this paper popular for finished work.

Kodak Mural Paper R is specially designed for the production of photomurals and other large prints. It tones well in Kodak Brown Toner and is available in two printing grades. It is regularly supplied in rolls 43 inches wide, untrimmed, and in some sheet sizes.



Kodak Velox Unicontrast Paper, Rapid, is primarily for use by the photofinisher with continuous printing and processing equipment. It is supplied in 1000-foot rolls, 2¾, 3, 3¼, and 3½ inches wide, straight or deckle edge. It is also available in 500- and 5000-sheet packages, straight or deckle edge, and die-cut in the proper shape for the Kodak Album Print Folder. Sizes are 3 x 3½, 3¼ x 4½, 3½ x 3½, 3½ x 5, 3½ x 5¾.

Kodak Translite Sheet Film. This film is coated on both sides with an emulsion similar to that used for warm tone projection papers. It is flat-lying, translucent, and capable of producing extremely brilliant results. It is especially useful for making advertising and display transparencies which will last longer and be more satisfactory than the usual paper prints. It yields beautiful transparencies when colored with

oil colors. A similar product on a paper base, **Kodak Translite Enlarging Paper**, is also available.

WHAT SURFACE TO CHOOSE?

THE following is a brief description of each Kodak paper surface type with some of its most common applications.

Surface A is a smooth, lustrous surface on a white, lightweight folding stock. It is used frequently for French-fold greeting cards, prints to be attached to reports and theses, salesmen's sample picture books, and paper negatives.

Surface B is smooth, cream white, lustre, particularly appropriate for portraits of small heads where it is desirable to preserve fine detail.

Surface C is the matte counterpart of B. It, too, is used for small portrait heads, but it is also recommended for high-key pictures where the matte surface adds a feeling of delicacy.

Surface E is a fine-grain lustre on white stock. It is usually preferred where a commercial paper of a non-glossy type is indicated. It preserves a great amount of detail, the white stock tint makes it acceptable to the engraver, and the lustre finish makes it acceptable as an all-round paper.

Surface F is Kodak's glossy surface—the general favorite for pictures to be reproduced photomechanically, such as commercial photos, news photos, etc. It is also widely used for exhibition prints, because of its ability to reproduce a maximum of detail with brilliance. The F surface is by far the most popular paper in both the commercial and photofinishing fields.

Surface G is the outstanding favorite for portraiture. It is adaptable to the majority of subjects and is often considered a happy compromise in cases where a more appropriate surface is not at hand. This surface is the popular favorite for oil coloring.

Surface J is the new Medalist surface—a smooth, high-lustre white. Designed specifically for the illustrator, its high-lustre surface preserves detail and produces brilliance which facilitates the making of highest-quality photomechanical reproductions.

Surface K is the high-lustre counterpart of G and is designed for the same purposes as G, although it imparts a feeling of greater brilliance and life to the picture. It is not recommended for oil coloring.

Surface L, being rough, is intended for reasonably large heads or other subjects where fine detail is not

Kodak**Photographic Papers**

STOCK TINT, TEXTURE, BRILLIANCE	A White Smooth Lustre (folding stock)	B Cream White Smooth Lustre	C Cream White Smooth Matte	D Snow White Fine Grained High Lustre	E White Fine Grained Lustre	F White Smooth Glossy	G Cream White Fine Grained Lustre
---------------------------------	--	--------------------------------------	-------------------------------------	--	--------------------------------------	--------------------------------	--

KODAK CONTACT PAPERS

Athena brown-black tone		B DW 1					G DW 0,1,2,3
Velox blue-black tone						F SW 0,1,2,3,4,5	
Azo blue-black tone				D DW 1,2,3,4	E SW & DW 0,1,2,3,4,5	F SW 0,1,2,3,4,5 F DW 0,1,2,3,4	
Illustrators' Azo warm-black tone					E SW & DW 1,2,3	F SW 0,1,2,3,4 F DW 1,2,3	
Aristo warm-black tone							G DW 1,2,3
Ad-Type (folding stock) blue-black tone	A LW 0,1,2,3,4,5 SA 1,2,3,4						
Resisto neutral-black tone							
Studio Proof (printing- out paper) red tone						F SW	

KODAK ENLARGING PAPERS

Ektalure brown-black tone						F SW F DW	G DW
Opal brown-black tone		B DW	C DW				G DW
Medalist warm-black tone					E DW 2,3	F SW 1,2,3,4 F DW 2,3	G DW 1,2,3,4
Illustrators' Special brown-black tone					E SW & DW		
Kodabromide neutral-black tone	A LW 1,2,3,4,5				E SW & DW 1,2,3,4,5	F SW & DW 1,2,3,4,5	G DW 1,2,3,4,5
Velox Rapid blue-black tone						F SW 0,1,2,3,4	
Resisto Rapid neutral-black tone							
Portrait Proof (developing-out paper) brown-black tone							
Mural warm-black tone							

SW—Single Weight, DW—Double Weight, LW—Light Weight, SA—Light Weight Tough Stock

This table shows Kodak's greatly augmented line of photographic papers . . . papers for every professional requirement . . . seventeen brands in all . . . in a great variety of stock tints, textures, sheens, and printing grades.

No matter for what purpose you deliver prints—as a portrait, commercial, news, police, industrial, or scientific photographer—among the papers included here you will find those best suited to the subject and the intended purpose.

J White Smooth High Lustre	K Cream White Fine Grained High Lustre	L Cream White Rough Lustre	N White Smooth Lustre	P Old Ivory Fine Grained Lustre	R Cream White Tweed Lustre	V Cream White Suede Matte	X Cream White Tapestry Lustre	Y Cream White Silk Lustre	Z Old Ivory Tapestry Lustre
-------------------------------------	---	-------------------------------------	--------------------------------	--	-------------------------------------	------------------------------------	--	------------------------------------	--------------------------------------

								Y DW 0,1,2,3	
			N DW 1,2,3,4,5						
				P DW 2				Y DW 0,1,2,3	
			N SW 0,2,3,5						

					R DW		X DW	Y DW	
	K DW	L DW		P DW	R DW	V DW		Y DW	Z DW
J SW 2,3 J DW 1,2,3,4								Y DW 1,2,3	
			N SW 1,2,3,4,5 N DW 1,2,3,4						
			N SW 1,2,3,4						
					R SW				
					R SW 2,3				



Baryta-coated paper awaiting sensitizing. Handling of the 275-pound rolls is accomplished by specially designed electric trucks.



Baryta-coated paper is placed on these stock stands and drawn through a light-trap onto the sensitizing machine.

important. The rough texture adds a certain ruggedness to the print and makes large-size photographs appear somewhat richer than if printed on a smooth-textured surface.

Surface N is a commercial surface which has been especially designed for retouching on the print. It accepts strong penciling. Being quite smooth, it also preserves fine detail.

Surface P is the old ivory counterpart of G and is used for the same purposes except that it is recommended for subjects with warmth, such as fireside scenes, sunsets, etc. The old ivory tint is also felt by many photographers to add stature to portraits of men, particularly older men.

Surface R is the very popular tweed surface. It is effective in minimizing the need for fine retouching and is especially good for breaking up large areas with its tweedlike texture. This surface has proven very popular for portrait proofing and for photo-mural work.

Surface V is the popular suede which simulates the appearance of suede leather. The extreme matte tends to tone down some detail, and the deep suede effect adds considerable depth to subjects. The

suede surface is practically reflection-free and looks very well with almost any type of lighting. It has been of considerable interest to television advertisers in their attempts to eliminate surface glare. It has also been adopted by several outstanding photographers for highest-quality wedding photographs.

Surface X like Surface Z is extremely coarse-textured and canvaslike. However, its cream white stock makes it ideal for oil coloring, lets teeth, bridal gowns, and similar highlight areas come through naturally.

Surface Y simulates silk and is extremely popular for wedding photography because of its brilliance and clothlike texture. Its brilliance also makes it a very attractive medium for expressing brightness in such pictures as snow scenes, seascapes, greeting cards, etc.

Surface Z is extremely coarse-textured and canvaslike, with old ivory tint. It is a heavy surface designed for the printing of heavy subjects. Its major use is for subduing large masses and it is very effective for extremely large heads of men. Opal Z is frequently oil-colored with opaque oils, which gives much the effect of an oil painting on canvas.

List Prices

JULY 1, 1956

Kodak Films, Plates and Papers

for the Professional

Eastman Kodak Company • Rochester 4, New York

All prices are subject to change without notice.

KODAK CONTRAST PROCESS ORTHO FILM
KODAK CONTRAST PROCESS PANCHROMATIC FILM
KODAK PANATOMIC-X FILM
KODAK PORTRAIT PANCHROMATIC FILM
KODAK ROYAL PAN FILM
KODAK SUPER PANCHRO-PRESS FILM, TYPE B
KODAK SUPER SPEED ORTHO PORTRAIT FILM
KODAK SUPER-XX PANCHROMATIC FILM
KODAK TRI-X PANCHROMATIC FILM

†Sizes	No. Sheets in Pkg	No. Pkg in Case	Per Package
4 x 5	25	20	\$ 3.60
	100	10	13.70
5 x 7	25	20	5.65
	100	10	21.50
6½ x 8½	25	10	8.60
8 x 10	25	10	12.05
	50	5	23.35
10 x 12	10	10	7.45
11 x 14	10	10	9.50
6.5 x 9 cm	25	..	2.05
9 x 12 cm	25	20	3.10

KODAK SUPER PANCHRO-PRESS FILM, TYPE B

For Banquet Cameras			
Sizes	No. Sheets in Pkg	No. Pkg in Case	Per Package
7x17	10	5	\$ 7.40
8x20	10	..	9.85
12x20	10	..	14.70

KODAK FINE GRAIN POSITIVE FILM

†Sizes	No. Sheets in Pkg	Per Package
5x 7	25	\$ 3.85
8x10	25	8.25
10x12	25	12.10
11x14	25	15.45
14x17	25	23.65
20x24	25	47.10

KODAK COMMERCIAL FILM
KODAK COMMERCIAL ORTHO FILM

†Sizes	No. Sheets in Pkg	No. Pkg in Case	Per Package
4 x 5	25	20	\$ 3.60
	100	10	13.70
5 x 7	25	20	5.65
	100	10	21.50
6½ x 8½	25	10	8.60
8 x 10	25	10	12.05
	50	5	23.35
10 x 12	25	10	17.70
11 x 14	25	10	22.65
12 x 18	25	10	31.40
14 x 17	25	10	34.60
16 x 20	25	5	46.25
*17 x 23	25	..	56.35
18 x 22	25	5	57.00
20 x 24	25	5	68.95
22 x 28	10	..	37.05
24 x 30	10	..	43.30
28 x 36	10	..	60.50
30 x 40	10	..	72.00

*Available in Kodak Commercial Film only.

KODAK COMMERCIAL MATTE FILM

†Sizes	No. Sheets in Pkg	No. Pkg in Case	Per Package
4x 5	25	20	\$ 3.60
5x 7	25	20	5.65
8x10	25	10	12.05
11x14	25	10	22.65
14x17	25	10	34.60
20x24	25	5	68.95

KODAK TRI-X ROLL FILM

Film No.	Negative Size	Exposures	List Incl Tax Per Roll
TX120	2¼ x 3¼	8, 12, 16	\$.55
TX620	2¼ x 3¼	8, 12, 16	.55
TX135	24 x 36mm	36	1.15
	24 x 36mm	20	.90

KODAK TRI-X ROLL FILM, 35mm (Safety Base), PERFORATED

Film No.	Negative Size	Length of Roll	List Per Roll
**TX417	24 x 36mm	100 ft	\$7.25

**Formerly 408 and 412. On new-type No. 10 spool. For Ophthalmograph, Eyemo, De Vry, and similar cameras. Graflex Photorecord Microfilm Outfit and 35mm Graflex Photorecord Identification Unit or Camera.

KODAK TRI-X ROLL FILM, 70mm (Safety Base), PERFORATED

Film No.	Length of Roll	List Per Roll
†TX477	100 ft	\$14.00

†For Huleher and similar cameras. On modified No. 10 metal spool with integral leader and trailer for loading in subduced light.

KODAK TRI-X FILM PACKS, 4 x 5

No.	Inches	Centimeters	Per Pack
TX523	4 x 5	10 x 12.5	\$2.95

KODAK INFRARED FILM

†Sizes	No. Sheets in Pkg	No. Pkg in Case	Per Package
4x 5	25	20	\$ 4.45
5x 7	25	20	6.95
8x10	25	10	14.85

KODAK OPALURE PRINT FILM

†Sizes	No. Sheets in Pkg	No. Pkg in Case	Per Package
3¼ x 4¼	10	20	\$ 2.05
	100	..	16.15
4 x 5	10	..	2.70
5 x 7	10	..	4.00
8 x 10	10	..	8.00
11 x 14	10	..	14.95

KODAK TRANSLITE FILM

†Sizes	No. Sheets in Pkg	No. Pkg in Case	Per Package
5 x 7	25	20	\$ 4.05
8 x 10	25	10	8.65
10 x 12	10	10	5.35
11 x 14	10	10	6.85
14 x 17	10	10	10.45
16 x 20	10	5	14.00
18 x 22	10	5	17.25
20 x 24	10	5	20.85

†Rolls 20 in. x 30 ft	30.50
30 in. x 30 ft	45.25
40 in. x 30 ft	60.00
48 in. x 30 ft	71.80

†Unlisted sheet sizes will be supplied as far as possible provided the order calls for a minimum of \$50 list of any one size, brand, and package. Prices will be quoted on request.

†Unlisted roll sizes up to 48 in. wide will be supplied as far as possible on special order, in 30- or 100-ft lengths only, and minimum orders must be for the number of rolls which can be cut from the full 48-in. master roll.

KODAK GRAVURE COPY FILM

Sizes	No. Sheets in Pkg	Per Pkg	Sizes	No. Sheets in Pkg	Per Pkg
4x 5	25	\$ 4.45	11x14	25	\$27.90
5x 7	25	6.95	12x15	25	32.30
8x10	25	14.85	14x17	25	42.60
10x12	25	21.80	16x20	25	56.95
			20x24	25	84.95

KODAK PLATES

33	Separation Negative, Type I
33 Matte	Separation Negative, Type I Matte
50	Super Panchro-Press
Process	Tri-X Panchromatic, Type B
Panchromatic	Tri-X Panchromatic, Type B Matte
Panchromatic Matte	

†Sizes	Plates Per Pkg	Case Wt Lb	No. Pkg in Case	Thickness of Glass Inches	Per Pkg
2 x10	12	47	40	.040	\$ 3.40
3¼x 4¼	12	29	30	.050	2.65
4 x 5	12	39	30	.050	3.40
4 x10	12	45	20	.040	5.20
5 x 7	12	55	20	.060	4.85
8 x10	12	60	10	.060	8.55
10 x12	6	86	12	.090	7.60
11 x14	6	86	10	.090	9.15
14 x17	6	85	6	.090	13.55
16 x20	6	103	4	.130	21.65
18 x22	6	77	2	.130	25.90
20 x24	6	90	2	.130	31.35
22 x28	2	212	6	.190	18.45
24 x32	2	264	6	.190	22.95
26 x34	2	301	6	.190	26.35
28 x32	2	300	6	.190	27.95
28 x36	2	317	6	.190	31.45
30 x40	2	421	6	.190	37.55
30 x52	2	520	6	.190	53.55
6.5x 9 cm	12	..	30	.040	2.05
9 x12 cm	12	..	30	.050	3.00

KODAK PLATES "M"

Metallographic
Super Ortho-Press

†Sizes	Plates Per Pkg	Case Wt Lb	No. Pkg in Case	Thickness of Glass Inches	Per Pkg
2 x10	12	47	40	.040	\$ 4.25
3¼x 4¼	12	29	30	.050	3.30
4 x 5	12	39	30	.050	4.25
4 x10	12	45	20	.040	6.50
5 x 7	12	55	20	.060	6.10
8 x10	12	60	10	.060	10.70
6.5x 9 cm	12	..	30	.040	2.60
9 x12 cm	12	..	30	.050	3.80

KODAK LANTERN SLIDE PLATES

†Sizes	Plates Per Pkg	No. Pkg in Case	Thickness of Glass Inches	Medium and Contrast Per Pkg	Anti-Abrasion Contrast Per Pkg
2 x 2	36	20	.040	\$ 4.85	\$ 5.30
3¼x 3¼	36	10	.050	5.65	6.20
3¼x 4	36	10	.050	6.30	6.90
2 x10	12	40	.040	3.20	3.50

†Unlisted sizes of plates will be supplied as far as possible provided the order calls for a minimum of one case of any one size and brand. The number of plates in a case for an unlisted size is the same as the next larger listed size.

KODAK AZO PAPER**Single Weight**E (0, 1, 2, 3, 4, 5)
F (0, 1, 2, 3, 4, 5)

Size	No. Sheets Pkg	Per Pkg
5 x 7	25 100 500	\$.90 3.15 13.20
6½ x 8½	100 500	4.80 20.30
7 x 9	500	23.00
8 x 10	10 25 100 500	.85 2.00 6.85 28.95
8 x 10½	50 250	3.65 15.60
8½ x 11	50 250	4.10 17.30
9 x 9	250	15.05
9 x 11	250	18.25
10 x 10	50 250	4.30 18.40
10 x 12	50 250	5.15 21.90
11 x 14	10 50 250	1.50 6.55 27.85
14 x 17	10 50 250	2.30 10.00 42.55
16 x 20	10 50 250	3.05 13.40 56.90
20 x 24	10 50 250	4.60 20.00 84.90
Rolls 35mm x 100 ft, Spec 16		2.15
Spec 18		3.15
35mm x 200 ft, Spec 16		3.30
35mm x 250 ft		3.90
2½ in. x 250 ft, Spec 87		6.50
3½ in. x 1000 ft, Spec 88		29.25
4½ in. x 1000 ft, Spec 88		35.30
20 in. x 30 ft, Spec 87		5.80
40 in. x 30 ft, Spec 87		10.85
40 in. x 100 ft, Spec 87		34.65
*9¾ in. x 1000 ft, Spec 154		75.90

*Supplied only in Azo F Single Weight.

KODAK AZO PAPER**Double Weight**

*D (1, 2, 3, 4)

E (0, 1, 2, 3, 4)

F (0, 1, 2, 3, 4)

N (1, 2, 3, 4, 5)

Size	No. Sheets Pkg	Per Pkg
4¼ x 5½	25 100 500	\$.90 2.85 11.95
deckle	25 100 500	.90 2.85 11.95
deckle	500	58.20
deckle	2500	58.20
5 x 7	25 100 500	1.20 4.10 17.30
6½ x 8½	100 250	6.45 13.90
8 x 10	10 25 100 250	1.20 2.70 9.05 19.55
8½ x 11	50 250	5.35 22.60
9 x 9	250	19.70
9 x 11	250	23.85
9½ x 9½	250	21.80
10 x 10	50 250	5.65 24.10
10 x 12	50 250	6.75 28.65
10 x 20	250	46.95

Size	No. Sheets Pkg	Per Pkg
11 x 14	10 50 250	\$1.95 8.55 36.40
12 x 20	50 250	13.20 56.15
14 x 17	10 50 250	3.00 13.10 55.65
16 x 20	10 50 250	4.00 17.50 74.40
20 x 24	10 50 250	6.05 26.15 111.10
Rolls 3½ in. x 500 ft		18.15
3½ in. x 250 ft		10.65
deckle		10.65
4¼ in. x 500 ft		23.40
deckle		23.40
4½ in. x 500 ft, Spec 87		24.70
5½ in. x 500 ft		28.70
5½ in. x 500 ft, Spec 87		30.00
8 in. x 100 ft, Spec 146		9.80
8 in. x 250 ft, Spec 146		23.00
8 in. x 500 ft, Spec 146		42.75
10 in. x 100 ft, Spec 146		12.00
10 in. x 250 ft, Spec 146		28.50
10 in. x 500 ft, Spec 146		53.20
40 in. x 30 ft, Spec 87		13.95

*Supplied only in 4¼ x 5½ and 4½ in. x 500-ft.

†Supplied only in those units indicated as factory stocked.

‡Deckle edge not supplied in F surface.

§Supplied only in D surface.

KODAK ILLUSTRATORS'**AZO PAPER****Single Weight**

E (1, 2, 3)

F (0, 1, 2, 3, 4)

Size	No. Sheets Pkg	Per Pkg
5 x 7	100 500	\$3.60 15.20
8 x 10	25 100 500	2.30 7.90 33.30
8 x 10½	250	17.95
8½ x 11	50 250	4.70 19.85
9 x 11	250	21.00
11 x 14	10 50 250	1.75 7.50 32.00
Rolls 20 in. x 30 ft, Spec 87		6.55
40 in. x 30 ft		12.35

KODAK ILLUSTRATORS'**AZO PAPER****Double Weight**

E (1, 2, 3)

F (1, 2, 3)

Size	No. Sheets Pkg	Per Pkg
5 x 7	100 500	\$4.70 19.80
8 x 10	25 100 250	3.10 10.35 22.45
8½ x 11	250	25.90
10 x 12	250	32.85
11 x 14	50 250	9.80 41.75
14 x 17	250	63.80
16 x 20	250	85.30
Rolls 11 in. x 250 ft		35.60
20 in. x 30 ft		8.30
40 in. x 30 ft		15.85

KODAK VELOX PAPER**Single Weight**

F (0, 1, 2, 3, 4, 5)

Size	No. Sheets Pkg	Per Pkg
5 x 7	25 100 500	\$.90 3.15 13.20
8 x 10	25 100 500	2.00 6.85 28.95
8 x 10½	250	15.60
8½ x 11	50 250	4.10 17.30
10 x 10	250	18.40
10 x 12	50 250	5.15 21.90
11 x 14	50 250	6.55 27.85
14 x 17	50 250	10.00 42.55
16 x 20	50 250	13.40 56.90
20 x 24	10 50 250	4.60 20.00 84.90

KODAK AD-TYPE PAPER**Light Weight**

A (0, 1, 2, 3, 4, 5)

Size	No. Sheets Pkg	Per Pkg
5 x 7	25 100 500	\$.80 2.75 11.55
8 x 10	25 100 500	1.75 6.00 25.35
8 x 10½	50 250	3.20 13.65
8 x 11	250	14.30
8½ x 11	10 50 250	.85 3.55 15.10
10 x 12	50 250	4.50 19.15
11 x 14	10 50 250	1.30 5.70 24.35
14 x 17	50 250	8.75 37.20
16 x 20	50 250	11.70 49.75
20 x 24	10 50 250	4.05 17.50 74.30
Rolls 20 in. x 30 ft, Spec 87		5.15
20 in. x 100 ft, Spec 87		15.65
40 in. x 30 ft, Spec 87		9.55
40 in. x 100 ft, Spec 87		28.85

KODAK AD-TYPE PAPER**Super Ledger**

SA (1, 2, 3, 4)

Size	No. Sheets Pkg	Per Pkg
8 x 10½	250	\$16.65
8½ x 11	50 250	4.35 18.43
24 x 30	50	31.80

KODAK ARISTO PAPER**Double Weight**

C (1, 2, 3)

P (2)

Y (0, 1, 2, 3)

Size	No. Sheets Pkg	Per Pkg
5 x 7	25 100 500	\$1.35 4.70 19.80
8 x 10	10 25 100 250	1.35 3.10 10.35 22.45
8½ x 11	250	25.90
9 x 11	250	27.35
10 x 12	50 250	7.75 32.85
11 x 14	10 50 250	2.25 9.80 41.75
Rolls 3½ in. x 500 ft		22.10
4 in. x 500 ft		25.10

KODAK ATHENA PAPER**Double Weight**

B (1)

C (0, 1, 2, 3)

Y (0, 1, 2, 3)

Size	No. Sheets Pkg	Per Pkg
5 x 7	25 100 500	\$1.35 4.70 19.80
6½ x 8½	100 250	7.40 15.95
8 x 10	10 25 100 250	1.35 3.10 10.35 22.45
8½ x 11	250	25.90
9 x 11	250	27.35
10 x 12	250	32.85
11 x 14	10 50 250	2.25 9.80 41.75

KODAK MURAL PAPER**Single Weight**

R (2, 3)

Size	No. Sheets Pkg	Per Pkg
8x10	100 500	\$7.90 33.30
11x14	10 50 250	1.75 7.50 32.00
16x20	50 250	15.40 65.40
20x24	50 250	23.00 97.65
Rolls 42 in. x 30 ft, Spec 87		12.95
42 in. x 100 ft, Spec 87		41.60
42 in. x 250 ft, Spec 87		97.40
42 in. x 500 ft, Spec 87		193.80

***KODAK POST CARDS 3 1/4 x 5 1/4 in.**

Azo
E (1, 2, 3, 4)
F (1, 2, 3, 4)

Number Per Pkg	Per Pkg
25.....	\$.85
100.....	2.50
500.....	10.10
5000.....	72.85

Eko Contact
N (2)
F (1, 2, 3, 4)

Number Per Pkg	Per Pkg
5000.....	\$62.80

Kodabromide
F (1, 2, 3, 4)

Number Per Pkg	Per Pkg
25.....	\$.95
100.....	2.80
500.....	11.50
5000.....	83.30

*Orders for double length, four-up, or eight-up cutting will be accepted on a minimum basis of 5,000 individual Post Cards.

Special Printing on Post Cards

When ordered in lots of not less than 5,000 of one surface and contrast grade, the name and address or souvenir line will be printed on end, top or bottom of cards—per 5,000 \$1.50
On single orders for 50,000 or over of one surface and printing grade, there is no charge for special printing.

**KODAK TRANSLITE
ENLARGING PAPER**

Single Weight

Size	No. Sheets Pkg	Per Pkg
8x10	25 100 500	\$1.70 \$4.90 16.90 71.35
10x12	10 50 250	2.95 12.75 54.00
11x14	10 50 250	3.70 16.15 68.65
16x20	10 50 250	7.55 33.00 140.30
20x24	10 50 250	11.40 49.30 209.40
Rolls 20 in. x 10 ft, Spec 87		4.90
20 in. x 30 ft, Spec 87		13.20
40 in. x 10 ft, Spec 87		9.05
40 in. x 30 ft, Spec 87		25.60

KODAK STUDIO PROOF PAPER

Single Weight

Size	No. Sheets Pkg	Per Pkg
5 x 7	25 100 500	\$1.05 3.60 15.20
6 x 8	100	4.85
6 1/2 x 8 1/2	100 500	5.55 23.35
7 1/2 x 9 1/2	100 500	7.05 29.75
8 x 10	10 25 100 500	1.00 2.30 7.90 33.30
11 x 14	50 250	7.50 32.00
14 x 17	50	11.50
16 x 20	50 250	15.40 65.40
20 x 24	250	97.65

KODAK RESISTO PAPER

Single Weight
N (0, 2, 3, 5)

Size	No. Sheets Pkg	Per Pkg
5 x 7	25 100 500	\$1.45 5.00 21.15
8 x 10	25 100 500	3.20 10.95 46.30
8 1/2 x 11	250	27.65
9 1/2 x 9 1/2	250	26.70
10 x 10	250	29.45
11 x 14	10 50 250	2.40 10.45 44.55
16 x 20	10 50 250	4.90 21.40 91.00
20 x 24	10 50 250	7.40 31.95 135.85
*Rolls 35mm x 100 ft, Spec 189		3.85
20 in. x 100 ft, Spec 87		27.90
9 1/4 in. x 1000 ft		120.80
*2 in. x 100 ft, Spec 215		3.70

*Supplied only in N5.

KODAK RESISTO RAPID PAPER

Single Weight
N (1, 2, 3, 4)

Size	No. Sheets Pkg	Per Pkg
5x 7	25 100 500	\$1.70 5.80 24.45
8x10	25 100 500	3.70 12.70 53.55
10x10	250	34.10
11x14	10 50 250	2.80 12.10 51.50
16x20	10 50 250	5.65 24.75 105.25
20x24	10 50 250	8.55 36.95 157.05

**KODAK PORTRAIT
PROOF PAPER**

Single Weight
R

Size	No. Sheets Pkg	Per Pkg
5 x 7	25 100 500	\$.90 3.15 13.20
6 1/2 x 8 1/2	100 500	4.80 20.30
7 x 9	500	23.00
7 1/2 x 9 1/2	500	25.90
8 x 10	10 25 100 500	.85 2.00 6.85 28.95
11 x 14	10 50 250	1.50 6.55 27.85
14 x 17	10 50 250	2.30 10.00 42.55
16 x 20	10 50 250	3.05 13.40 56.90
20 x 24	10 250	4.60 84.90
Rolls 5 in. x 500 ft		22.05
7 in. x 500 ft		30.45
8 in. x 100 ft, Spec 146		7.75
10 in. x 500 ft		40.95
20 in. x 30 ft, Spec 87		5.80
40 in. x 10 ft, Spec 87		4.10
40 in. x 30 ft, Spec 87		10.85
40 in. x 100 ft, Spec 87		34.65
40 in. x 250 ft, Spec 87		80.90
42 in. x 100 ft, Spec 87		36.35
42 in. x 250 ft		84.95

KODABROMIDE PAPER

Light Weight
A (1, 2, 3, 4, 5)
Single Weight
E (1, 2, 3, 4, 5)
F (1, 2, 3, 4, 5)
N (1, 2, 3, 4, 5)

KODAK MEDALIST PAPER

Single Weight
F (1, 2, 3, 4)
J (2, 3)

Size	No. Sheets Pkg	Per Pkg
5 x 7	25 100 500	\$1.05 3.60 15.20
*6 x 8	500	20.45
*6 1/2 x 8 1/2	100 500	5.55 23.35
*7 x 9	100 500	6.30 26.45
*7 x 15	250	22.15
8 x 10	10 25 100 500	1.00 2.30 7.90 33.30
8 x 10 1/2	50 250	4.20 17.95
8 1/2 x 11	10 50 250	1.10 4.70 19.85
*9 x 11	250	21.00
*10 x 10	250	21.20
10 x 12	50 250	5.95 25.20
11 x 14	10 50 250	1.75 7.50 32.00
14 x 17	10 50 250	2.60 11.50 48.90
16 x 20	10 50 250	3.50 15.40 65.40
20 x 24	10 50 250	5.30 23.00 97.65
Rolls mm ft		Per Roll
*35 x 100, Spec 18		3.35
*35 x 200, Spec 18		4.65
*35 x 250, Spec 18		5.30
35 x 500		7.65
in. ft		
*2 1/2 x 250		7.05
*2 1/2 x 1000		24.15
*3 1/4 x 1000		31.10
*3 1/2 x 1000		33.45
*4 1/2 x 1000, Spec 88		42.70
*5 x 1000, Spec 88		47.40
*8 x 500		37.65
20 x 10, Spec 87		2.70
20 x 30, Spec		6.55
20 x 100		20.35
20 x 250		49.35
30 x 30, Spec 87		9.45
40 x 10		4.60
40 x 30, Spec 87		12.35
40 x 50, Spec 87		20.10
40 x 100, Spec 87		39.65
40 x 250		92.75

*Supplied only in F surface.

†Supplied only in Medalist F, Single Weight.

KODAK OPAL PAPER

Double Weight
B, C, G, K, L, P, R, V, Y, Z

KODAK EKTALURE PAPER

Double Weight
F-G-R-Y & X

**KODAK ILLUSTRATORS'
SPECIAL PAPER**

Double Weight
E

KODAK OPAL PAPER**KODAK EKTALURE PAPER****KODAK ILLUSTRATORS'
SPECIAL PAPER**

Double Weight

Size	No. Sheets Per Pkg	Per Pkg
5 x 7	25 100 500	\$1.60 5.40 22.80
*6 x 8	250	16.05
6 1/2 x 8 1/2	100 250	8.50 18.35
*7 x 10	250	22.80
*7 x 11	250	24.85
7 x 15	50 250	7.75 33.20
8 x 10	10 25 100 250	1.60 3.55 11.95 25.80
8 1/2 x 11	50 250	7.05 29.80
*10 x 12	50 250	8.90 37.80
11 x 14	10 50 250	2.60 11.30 48.00
14 x 17	10 50 250	3.95 17.30 73.40
16 x 20	10 50 250	5.30 23.10 98.10
20 x 24	10 50 250	7.95 34.45 146.45
in. ft		Per Roll
Rolls 2 1/4 x 500, Spec 155		16.60
*2 1/2 x 250		10.05
*2 1/2 x 500, Spec 155		18.40
Spec 87		18.40
3 1/2 x 250		13.70
*3 1/2 x 500, Spec 155		25.30
*4 1/4 x 500		30.55
*5 x 500, Spec 155		35.75
7 x 250		26.35
7 x 500		49.70
*8 x 500		56.05
*10 x 500		69.85
20 x 10, Spec 87		3.65
20 x 30, Spec 87		9.45
40 x 10, Spec 87		6.55
40 x 30, Spec 87		18.15

*Supplied only in Opal G and Ektalure G.

†Supplied only in Opal G.

‡Supplied in bulk units of 2 rolls in Ektalure G.

§Supplied only in Opal G, and Ektalure G and R.

**KODAK ILLUSTRATORS'
SPECIAL PAPER**

Single Weight
E

KODAK EKTALURE PAPER

Single Weight
F

Size	No. Sheets Pkg	Per Pkg
5 x 7	25	\$1.20
	100	4.10
	500	17.30
6½ x 8½	500	26.55
8 x 10	10	1.10
	25	2.60
	100	8.95
	500	37.85
8½ x 11	50	5.35
	250	22.60
11 x 14	10	1.95
	50	8.55
	250	36.40
14 x 17	10	3.00
	50	13.10
	250	55.65
16 x 20	10	4.00
	50	17.50
	250	74.40
20 x 24	50	26.15
Rolls *2 in. x 1000 ft		22.10
20 in. x 30 ft, Spec 87		7.35
40 in. x 30 ft, Spec 87		13.95

*Supplied only in Ektalure F.

KODABROMIDE PAPER

Double Weight

E (1, 2, 3, 4, 5)
F (1, 2, 3, 4, 5)
G (1, 2, 3, 4, 5)
N (1, 2, 3, 4)

KODAK MEDALIST PAPER

Double Weight

E (2, 3)
F (2, 3)
G (1, 2, 3, 4)
J (1, 2, 3, 4)
Y (1, 2, 3)

Size	No. Sheets Pkg	Per Pkg
4½ x 5½ ★	25	\$1.00
	100	3.25
	500	13.70
5 x 7	25	1.35
	100	4.70
	500	19.80
6 x 8	100	6.50
	250	13.95
7 x 15	50	6.75
	250	28.90
8 x 10	10	1.35
	25	3.10
	100	10.35
	250	22.45
8½ x 11	50	6.10
	250	25.90
9 x 11	250	27.35

Size	No. of Sheets Pkg	Per Pkg
10 x 12	50	7.75
	250	32.85
11 x 14	10	2.25
	50	9.80
	250	41.75
14 x 17	10	3.40
	50	15.05
	250	63.80
16 x 20	10	4.60
	50	20.05
	250	85.30
20 x 24	10	6.95
	50	29.95
	250	127.35
Rolls 2½ in. x 500 ft		16.10
†3¼ in. x 500 ft		20.60
†3½ in. x 250 ft		12.00
3½ in. x 500 ft		22.10
‡5 in. x 500 ft, Spec 155		31.15
20 in. x 10 ft, Spec 87		3.25
20 in. x 30 ft, Spec 87		8.30
30 in. x 30 ft, Spec 87		12.10
40 in. x 10 ft, Spec 87		5.80
40 in. x 30 ft, Spec 87		15.85
40 in. x 50 ft, Spec 87		25.90
40 in. x 100 ft, Spec 87		51.35
40 in. x 250 ft		120.50

★Supplied in Kodabromide DW only.

†Supplied in bulk units of 2 rolls in Medalist. G-2.

‡Supplied in Medalist only.

Eastman Kodak Company
Rochester 4, N. Y.