

THE SIMPLIFIED  
**GRAFLEX**



THE UNIVERSAL CAMERA FOR  
MAKING BETTER PICTURES





CLEARING THE BAR





## The GRAFLEX

ASK ANY PERSON who really knows cameras—any professional photographer—and he can tell you the Graflex ranks first among the world's most truly remarkable cameras. He will tell you the Graflex is the most versatile camera known—that it is the *simplest* and *most easily operated* of all the fine cameras he knows.

Graflex has enjoyed this reputation since its very beginning.

To-day the Graflex line offers innumerable refinements and improvements. Amateurs and Professionals alike regard the Graflex as the most universal of all cameras made. With the single exception of wide angle work, Graflex will do everything any other camera can do, and a great many things not possible with other types of cameras.

A certain liveliness is noticeable throughout a Graflex picture album. Sharpness and detail give pictures of even every-day subjects a marked vigor. And variety! Spirited glimpses of children in their most natural poses, close-up portraits, incidents on the journey, dashes of action, indoor exposures that only a snapshot could catch—these and more are easy Graflex pictures.

### *Built Around Three Features*

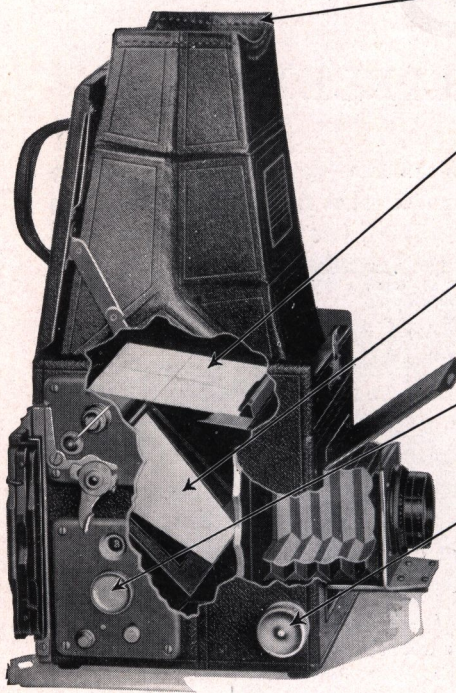
REFLECTING MIRROR: Shows whether the focus is right and the composition pleasing.

FOCAL PLANE SHUTTER: A speed for every need.

ANASTIGMAT LENSES f 4.5, f 3.5, f 2.5: Make fully exposed negatives possible in poor light.

As you look into the hood of the Graflex you see on the ground glass an image of the subject, right side up, big as the film, reflected there from a mirror set at an angle of 45 degrees, and the image is visible until the instant of exposure. Is it any wonder that Graflex pictures always show such sharp focus and that the composition is always just right? Focusing is under constant control. Though the distance from camera to subject may change, the fingertips on the focusing knob keep the image sharp and clear. Without measuring or pacing or guessing you know that when the image is sharp on the ground glass it will be sharp on the film.





Look into the focusing hood and you see a reflected image of the subject, right side up, full picture size.

When the image on the ground glass is sharp, focus is sharp; if composition is correct on the ground glass it will be correct in the picture.

The tilted mirror reflects the image to the ground glass above. When the exposure lever is pressed the mirror swings upward out of the way, releasing shutter curtain.

Focal plane shutter has speeds of 1/10 to 1/1000 of a second and passes about one-third more light than does any other type of shutter.

Focus is under easy control until the instant of exposure.

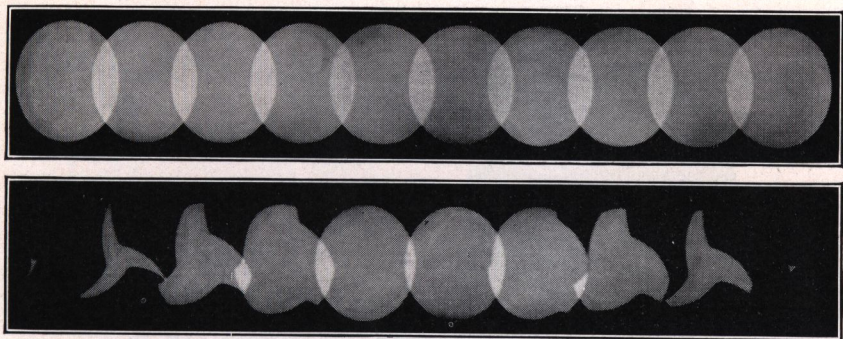
**G**RAFLEX Focal Plane Shutter is an opaque curtain that runs in front of the film, between a ratchet roller and a spring roller. The spring can be wound to any of six tensions. In the curtain are five openings of different widths. During an exposure, one of these openings flashes across the film, admitting the rays of light that represent the picture. What could be simpler?

The five openings and six tensions produce twenty-four speed combinations from 1/10 to 1/1000 (1 to 1/500 in the Home Portrait).

Such a range of speeds, supplemented by a slow of about 1/5 and any time required, gives the Graflex a versatility that extends all the way from the exciting action picture to the calm portrait study.

A further advantage of the Graflex Shutter is that it passes one-third more light than does any other type: a help toward sufficient shadow detail. The volume of light that gets through the shutter, to be sure, depends on the volume brought into the camera by the lens.





From actual photographs made with identical lenses during exposures of  $1/100$  of a second, each flash representing  $1/1000$  of a second. The upper strip, made with a Graflex focal plane shutter, shows uniform illumination, whereas the lower strip indicates that the best between-lens shutter is "wide open" during the fifth and sixth flashes only.

**L**ENSES supplied with Graflex are the highest type Anastigmat obtainable. Kodak Anastigmat and Carl Zeiss Tessar  $f\ 4.5$ , Cooke Anastigmat  $f\ 2.5$  and Schneider Xenar  $f\ 3.5$  Lenses admit so much light that detailed negatives are obtainable even when the motion requires a shutter speed of  $1/825$  or  $1/1000$ . At the other extreme, bright indoor subjects can often be photographed as snapshots. Babies and pets that won't stay still are thus typical Graflex opportunities.

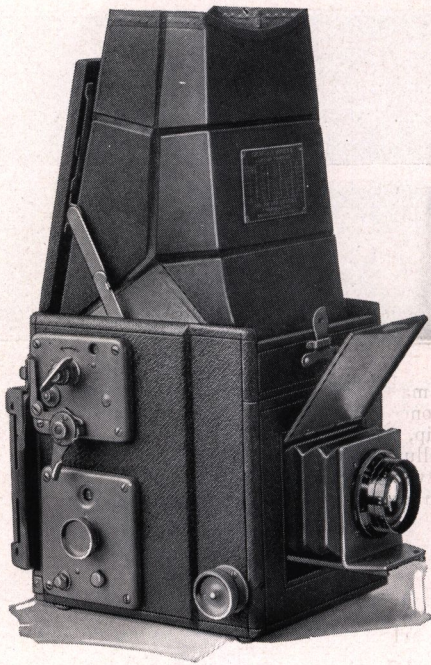
These lenses are highly corrected—and highly respected throughout the optical world. They make sharply defined negatives and such negatives produce magnificent enlargements.

In construction, the Graflex is the work of proud craftsmen. Beneath its rich morocco covering is a body of choice mahogany, sturdily joined. Exposed metal parts are brass, silver-plated, oxidized to a dull grey finish. Beauty and dependability are fittingly combined.

Years ago the Graflex was known mainly for its yield of sensational pictures. Meanwhile its users have discovered that action scenes are but a section of its scope. Amateurs value particularly its ability to put distinctive charm into pictures of common subjects.

They are built to last a lifetime and record a lifetime of amazing pictures. And they are exceedingly easy to use. Get one into your hands and see.





# GRAFLEX

## Series B

3 1/4 x 4 1/4—Dimensions, 5 3/4 x 5 3/8 x 6 1/4. Weight, 4 1/2 lbs. Focal length of lens, 5 1/2 in. Closest working distance, 24 3/4 in.

4 x 5—Dimensions, 6 3/4 x 6 1/4 x 7 1/4. Weight, 6 1/4 lbs. Focal length of lens, 6 3/8 in. Closest working distance, 25 3/4 in.

5 x 7—Dimensions, 9 1/4 x 8 3/4 x 8 3/4. Weight, 9 3/4 lbs. Focal length of lens, 8 1/2 in. Closest working distance, 27 3/4 in.

3 1/4 x 4 1/4 . 4 x 5 . 5 x 7

**T**HE Series B Graflex represents the very latest refinements in design. The lens is mounted in a stout, rigid, metal front. The bellows is compact and moves easily and evenly on a single, wide track. Reflecting mirror, focal plane shutter and fast lens are all present.

Equipped with Kodak Anastigmat *f* 4.5 lens—the equal of any lens made for sharpness, this Graflex produces vivid prints and excellent negatives for making enlargements.

And quick! It's simplicity itself in use. Slip a catch and the hood is open. Turn the focus knob—the lens uncovers. And you're ready to catch in fullest detail the swiftest movement. . . . Or, since the lens admits so much light, a quiet moment in the shade.

"GRAFLEX" means that the reflecting mirror, focal plane shutter and fast lens are all present. "Series B" denotes recent refinements of design.

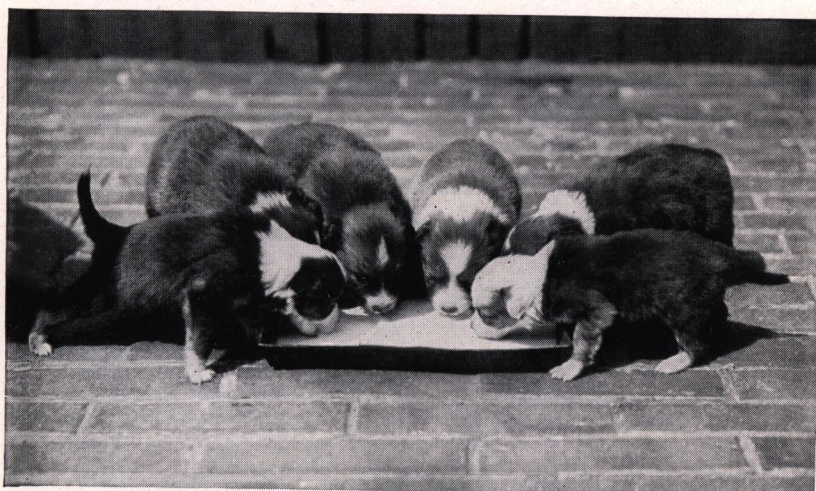
Since the lens is installed by the men that make the camera, any Series B Graflex is a matched instrument.



*Focal plane shutter gives twenty-four speeds from 1/10 to 1/1000, also a slow exposure of about 1/5 and any time desired. Cut film, roll film, plates and film packs can be used in the interchangeable accessories listed below.*

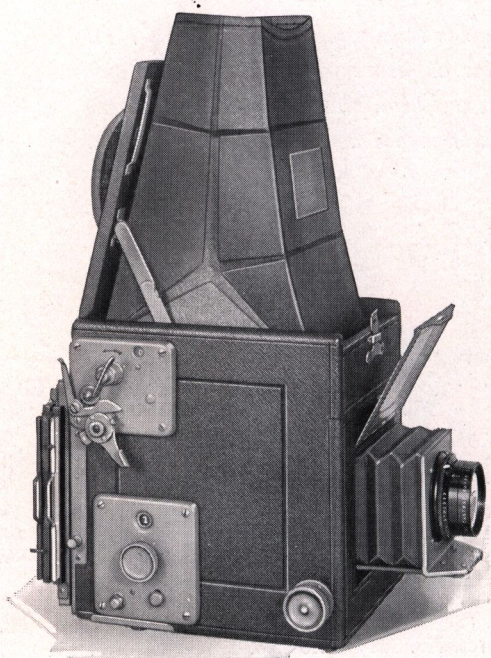
## PRICES

GRAFLEX, Series B, with Film Pack		3 1/4 x 4 1/4		4 x 5		5 x 7	
Adapter and Kodak Anastigmat Lens							
f 4.5 . . . . .	No. 31	\$80.00	No. 32	\$100.00	No. 34	\$160.00	
Graflex Roll Holder . . . . .	No. 51	12.50	No. 53	13.50	No. 54	16.00	
Graflex Cut Film Holder . . . . .		2.75		3.00		4.00	
Graflex Cut Film Magazine . . . . .		14.50		15.50		18.00	
Graflex Film Pack Adapter . . . . .		5.50		6.50		8.50	
Graflex Plate Holder . . . . .		2.75		3.00		4.00	
Graflex Plate Magazine . . . . .		14.50		15.50		18.00	
Kodak Pictorial Diffusion Disk . . . .	No. 31	5.00	No. 32	5.00	No. 34	6.00	
Ground Glass Focusing Panel to inter- change with holder . . . . .		5.50		6.00		8.00	
Sole Leather Carrying Case . . . . .		10.50		12.50		18.00	
Graflex Roll Holder Film, 6 Exposures	No. 151	.45	No. 153	.55	No. 154	.95	



FIRST CALL FOR LUNCH





## Revolving Back GRAFLEX Series B

$2\frac{1}{4} \times 3\frac{1}{4}$ —Dimensions,  $6 \times 4\frac{1}{2} \times 6\frac{1}{4}$ . Weight, 4 lbs. Focal length of lens,  $5\frac{1}{2}$  in. Closest working distance  $22\frac{1}{2}$  in.

$3\frac{1}{4} \times 4\frac{1}{4}$ —Dimensions,  $6\frac{3}{4} \times 5\frac{1}{2} \times 6\frac{7}{8}$ . Weight,  $5\frac{1}{2}$  lbs. Focal length of lens,  $6\frac{3}{8}$  in. Closest working distance, 24 in.

$4 \times 5$ —Dimensions,  $8\frac{3}{8} \times 6\frac{3}{8} \times 7\frac{7}{8}$ . Weight,  $7\frac{3}{4}$  lbs. Focal length of lens,  $7\frac{1}{2}$  in. Closest working distance,  $27\frac{1}{2}$  in.

$2\frac{1}{4} \times 3\frac{1}{4}$  .  $3\frac{1}{4} \times 4\frac{1}{4}$  .  $4 \times 5$

**T**HIS Graflex offers every feature described on page 7, plus a revolving back. The revolving back simplifies the expedient of photographing a tall subject with the long way of the film placed upright. Instead of turning the camera, turn only its back and, as usual, look downward into the hood. So many pictures are properly verticals that this convenience is a valuable advantage.

Experts fit a Kodak Anastigmat  $f$  4.5 into each Series B Graflex: an assurance of proper teamwork on the picture-making job.

The illustrations on the cover and frontispiece of this catalog are from negatives made with the  $4 \times 5$  Revolving Back Graflex, Series B.

*Focal plane shutter gives twenty-four speeds from  $1/10$  to  $1/1000$ , also a slow exposure of about  $1/5$  and any time desired. Cut film, roll film, plates and film packs can be used in the interchangeable accessories listed below.*





The Revolving Back works smoothly and is light-tight in any position.

The Revolving Back which brings the long dimension into vertical position for all pictures, is light-tight in any position. It, too, has an ingenious and simple operation.

Removing complication, avoiding hazards of guesswork and providing safeguards against the chances of error—the major accomplishments of the Graflex have brought wide public acceptance of this camera.

Its distinctive form, and the large number in successful use have made it recognized throughout the world as the camera most to be relied upon for the making of *better pictures* under varying conditions of good and bad weather.

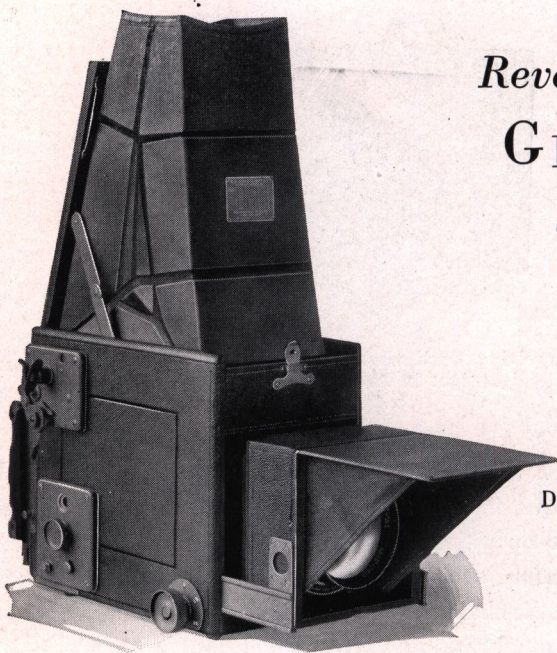
The Graflex is certain in its operation and certain to make *better pictures*.

## PRICES

### REVOLVING BACK GRAFLEX, Series B, with Film Pack Adapter and Kodak Anastigmat

	2 3/4 x 3 1/4	3 1/4 x 4 1/4	4 x 5
Lens f4.5 . . . . .	No. 31 \$85.00	No. 32 \$105.00	No. 33 \$120.00
Graflex Roll Holder . . . .	No. 50 12.50	No. 51 12.50	No. 53 13.50
Graflex Cut Film Holder . .	2.50	2.75	3.00
Graflex Cut Film Magazine .	13.00	14.50	15.50
Graflex Film Pack Adapter . .	5.50	5.50	6.50
Graflex Plate Holder . . . .	2.50	2.75	3.00
Graflex Plate Magazine . . .	13.00	14.50	15.50
Kodak Pictorial Diffusion Disk	No. 31 5.00	No. 32 5.00	No. 33 5.00
Ground Glass Focusing Panel to interchange with holder .	4.50	5.50	6.00
Sole Leather Carrying Case . .	9.00	12.00	15.00
Graflex Roll Holder Film, 6 Exposures . . . . .	No. 150 .25	No. 151 .45	No. 153 .55





## Revolving Back GRAFLEX Series C

Dimensions,  $8\frac{1}{2} \times 5\frac{1}{2} \times 7\frac{1}{4}$   
in. Weight,  $7\frac{1}{4}$  lbs.  
Focal length of lens,  
 $6\frac{1}{2}$  in. Closest work-  
ing distance, 23 in.

$3\frac{1}{4} \times 4\frac{1}{4}$

**P**ICTURES commonly called impossible become easy through the magic of this camera. Cooke Anastigmat  $f$  2.5 is fast! three times as fast as  $f$  4.5 and ten times as fast as  $f$  8. The extra light that this lens admits lets the Series C Graflex produce detailed negatives under conditions that keep ordinary outfits idle.

In the rain or in the woods or in the house—from dawn to dusk in almost any weather—owners of the Series C get pictures that are envied and admired. Kodak Cut Film *Super Speed* behind the Cooke Anastigmat  $f$  2.5 often permits snapshots of subjects that usually take *time*.

A solid front holds the lens rigid. The hinged cover with side wings serves, when open, as a shield against the sun.

Exact focus is easy, thanks to the reflecting mirror. If the image looks sharp in the hood, it will surely look sharp in the picture.

Photographers who must bring in good results regardless of difficulties can safely rely on this camera. Its *extra* ability added to the usual wide scope of a Graflex equips the Series C for a sensational output of pictures.





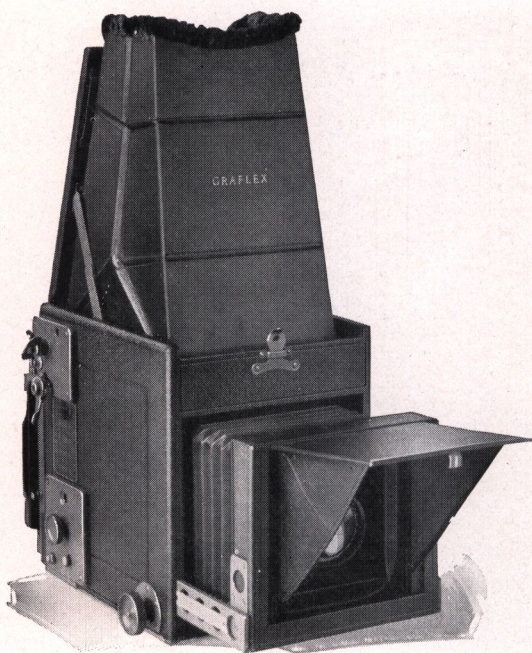
*Cooke Anastigmat f2.5 (shown here in exact size)  
is the fastest lens ever offered on a Graflex.*

*Focal plane shutter gives twenty-four speeds from 1/10 to 1/1000, also a slow exposure of about 1/5 and any time desired. Cut film, roll film, plates and film packs can be used in the interchangeable accessories listed below.*

#### PRICES

REVOLVING BACK GRAFLEX, Series C, with Film Pack Adapter and Cooke $3\frac{1}{4} \times 4\frac{1}{4}$		
Anastigmat Lens f2.5 . . . . .		\$260.00
Graflex Roll Holder, No. 51 . . . . .		12.50
Graflex Cut Film Holder . . . . .		2.75
Graflex Cut Film Magazine . . . . .		14.50
Graflex Film Pack Adapter . . . . .		5.50
Graflex Plate Holder . . . . .		2.75
Graflex Plate Magazine . . . . .		14.50
Ground Glass Focusing Panel to interchange with holder . . . . .		5.50
Sole Leather Carrying Case . . . . .		13.00
Graflex Roll Holder Film, 6 Exposures No. 151 . . . . .		.45





## *Revolving Back* **GRAFLEX** *Series D*

$3\frac{1}{4} \times 4\frac{1}{4}$ —Dimensions  $6\frac{3}{4} \times 5\frac{1}{2} \times 6\frac{7}{8}$ . Weight, 4 lbs. 8 oz. Bellows capacity,  $8\frac{1}{2}$  in. Lens Board,  $3\frac{1}{4} \times 3\frac{3}{4}$  in. Minimum focus of lenses accommodated  $5\frac{3}{4}$  in.

$4 \times 5$ —Dimensions  $8\frac{3}{8} \times 6\frac{3}{8} \times 7\frac{7}{8}$ . Weight, 6 lbs. 12 ozs. Bellows capacity, 12 in. Lens Board,  $3\frac{3}{4} \times 3\frac{3}{4}$  in. Minimum focus of lenses accommodated 7 in.

$3\frac{1}{4} \times 4\frac{1}{4}$  .  $4 \times 5$

**A** TRULY “all purpose” Graflex, designed for the varied requirements of general photography.

Unlike the Series B, Revolving Back Series B, and Revolving Back Series C Models, which are listed with single exclusive lens equipment, the Revolving Back Series D is listed with a wide selection of lenses of varying speeds.

One of the principal features of this model is the removable wooden lensboard which permits the use of different lenses interchangeably. This feature also permits listing the camera without lens equipment, an important item to the purchaser who already possesses suitable lenses.

Besides incorporating all of the distinctive Graflex features, the Revolving Back Series D offers additional appointments including Automatic lens shield and supplementary focusing scale on side of right front extension rack.



*Focal plane shutter gives twenty-four speeds from 1/10 to 1/1000, also a slow exposure of about 1/5 and any time desired. Cut film, roll film, plates and film packs can be used in the interchangeable accessories listed below.*

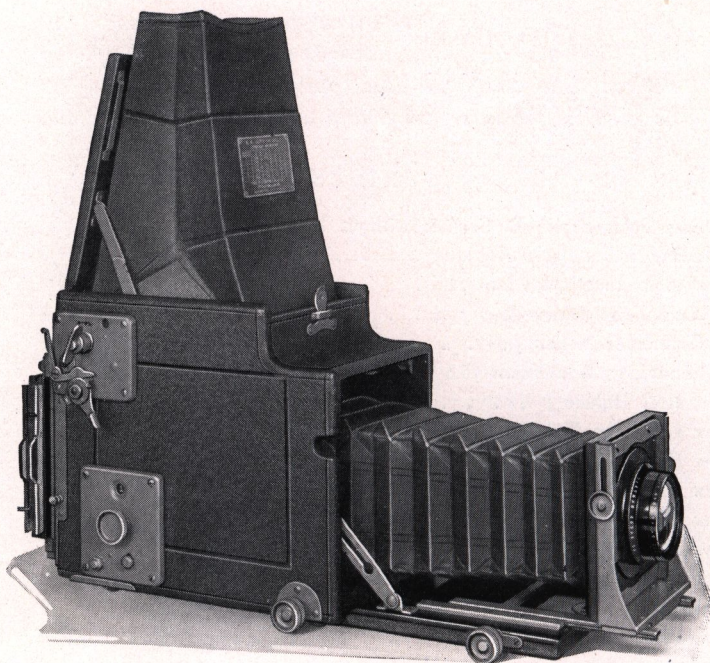
#### PRICES

Revolving Back Series D Graflex without lens,	3¼x4¼	4 x 5
including Film Pack Adapter . . . . .	\$ 90.00	\$100.00
With Kodak Anastigmat lens f4.5 . . . . . (32)	131.00	(33) 150.00
With Carl Zeiss Tessar lens f4.5 . . . . . (15)	139.00	(15A) 160.00
With Schneider Xenar f3.5 . . . . .	145.00	167.00
With Schneider Tele Xenar f5.5 . . . . . (11¾")	147.00	(14¼") 175.00
Graflex Roll Holder . . . . . (51)	12.50	(53) 13.50
Graflex Cut Film Holder . . . . .	2.75	3.00
Graflex Cut Film Magazine . . . . .	14.50	15.50
Graflex Film Pack Adapter . . . . .	5.50	6.50
Graflex Plate Holder . . . . .	2.75	3.00
Graflex Plate Magazine . . . . .	14.50	15.50
Ground Glass Focusing Panel to interchange with		
Holder . . . . .	5.50	6.00
Sole Leather Carrying Case . . . . .	12.00	15.00
Extra Lens Board . . . . .	.75	.90
Graflex Roll Holder Film, 6 Exposures . . . . . No. 151	.45	No. 153 .55



DRIVING OUT OF TRAP





3¼ x 4¼—Dimensions, 8½ x 5½ x 7. Bellows capacity, 15½ in. Weight, 5¾ lbs. Size of lens board, 3¼ x 3¼ in. Minimum focus of lenses accommodated 7½ in. Focal length of lenses listed: Kodak Anastigmat *f*4.5, 7½ in.; B. & L. Protar, Series VIIa, *f*6.3, complete, 7⅞ in.; either element singly, 13¾ in.

4 x 5—Dimensions, 10 x 6¼ x 8. Bellows capacity, 18½ in. Weight, 7 lbs. Size of lens board, 3¾ x 3¾ in. Minimum focus of lenses accommodated, 9 in. Focal length of lenses listed: Kodak Anastigmat *f*4.5, 10 in.; B. & L. Protar Series VIIa, *f*6.3, complete, 9¼ in.; either element singly, 16 3/16 in.

## *Revolving Back* AUTO GRAFLEX

**T**RUE-SIZED close-ups are often essential: notebook data are minimized when the negative represents the blossom, jewel, specimen or design in actual dimension. Big images of distant objects are desirable: wild life and sports events must usually be viewed from afar. Both extremes lie within the province of this Graflex because generous bellows draw permits (1) work at short range and (2) the use of a long-focus lens such as the single element of a convertible anastigmat.



As aids to proper composition, a revolving back facilitates vertical pictures of tall subjects and a rising front controls foregrounds. A focusing panel is provided for the rear so that the image can be measured or examined under a magnifier.

Such conveniences combined with the reflecting mirror, focal plane shutter and fast lens endear this camera to nature lovers, scientists and other exacting photographers.

Amateurs and professionals alike respect the Auto Graflex and admire its versatility.

*Focal plane shutter gives twenty-four speeds from 1/10 to 1/1000, also a slow exposure of about 1/5 and any time desired. Cut film, roll film, plates and film packs can be used in the interchangeable accessories listed below.*

#### PRICES

REVOLVING BACK AUTO GRAFLEX, without lens, including focusing panel and Film Pack Adapter . . . . .	3¼ x 4¼	4 x 5
	\$108.00	\$124.00
With Kodak Anastigmat Lens <i>f</i> 4.5 . . . . .	No. 33 158.00	No. 35 232.00
With B. & L. Protar Lens, Series VIIa, <i>f</i> 6.3 . . . . .	No. 10 203.00	No. 13 249.00
Graflex Roll Holder . . . . .	No. 51 12.50	No. 53 13.50
Graflex Cut Film Holder . . . . .	2.75	3.00
Graflex Cut Film Magazine . . . . .	14.50	15.50
Graflex Film Pack Adapter . . . . .	5.50	6.50
Graflex Plate Holder . . . . .	2.75	3.00
Graflex Plate Magazine . . . . .	14.50	15.50
Sole Leather Carrying Case . . . . .	13.50	16.00
Extra Lens Board . . . . .	.75	.90
Graflex Roll Holder Film—6 Exposures . . . . .	No. 151 .45	No. 153 .55



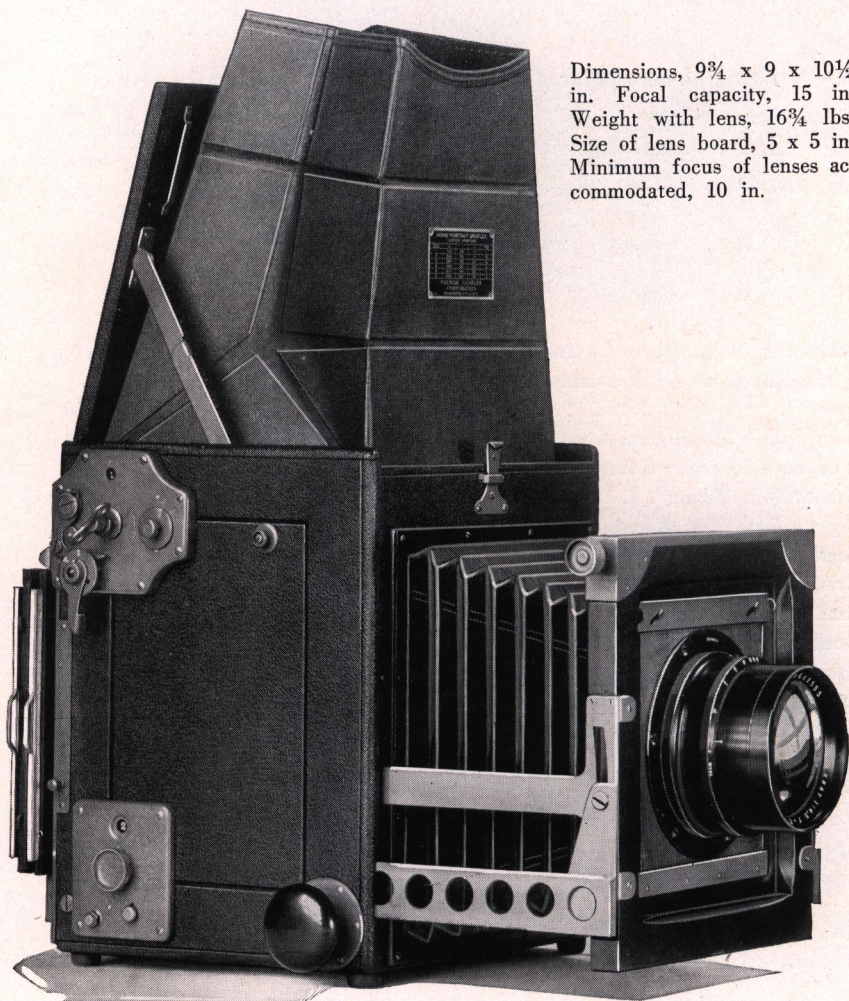
# HOME PORTRAIT GRAFLEX

5 x 7

NATURALNESS in the portrait is easily attained with this camera. Watch the composition in the hood; raise, lower or swing the front; keep the focus under fingertip control. And at the prize moment record the spirited expression that gives a portrait such charm.

So definitely helpful are the special features of this Graflex that they enable the user to grasp countless opportunities for making home por-

Dimensions,  $9\frac{3}{4} \times 9 \times 10\frac{1}{2}$  in. Focal capacity, 15 in. Weight with lens,  $16\frac{3}{4}$  lbs. Size of lens board, 5 x 5 in. Minimum focus of lenses accommodated, 10 in.





traits and indoor story-telling pictures that only a hand-held instrument can get. Without shifting furniture for tripod space, the operator moves from viewpoint to viewpoint, always ready for the instant at which he sees in the hood the effect that he seeks.

With the Kodak Anastigmat *f* 4.5 well open and *Super Speed* film in the holder, a slow automatic exposure often does instead of *time*. Stony stillness isn't necessary—a special advantage when the subject is a lively youngster. The lens of twelve-inch focal length encourages good perspective. The camera needn't be close to get a big image on the 5 x 7 area.

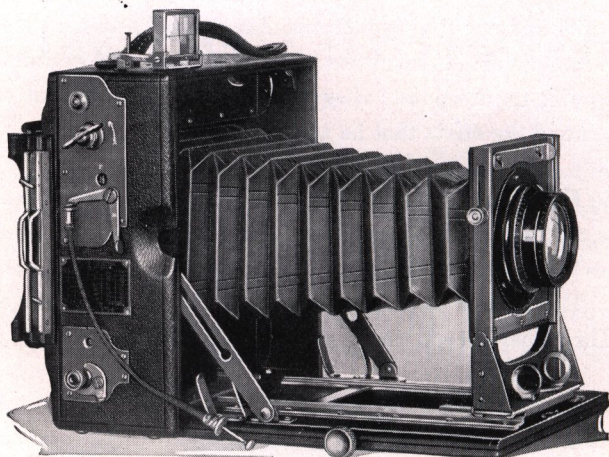
If you are after an instrument that is quickly adaptable to the varied needs of home portraiture, this is the camera. Other work also falls within its field but first of all it aims to make portraits that glow with personality.

*Focal plane shutter gives twenty-four speeds from 1 to 1/500 and any time desired. Cut film, roll film, plates and film packs can be used in the interchangeable accessories listed below.*

#### PRICES

HOME PORTRAIT GRAFLEX, without lens, including focusing panel and one	5 x 7
cut film holder (plate holder optional) . . . . .	\$225.00
With Kodak Anastigmat Lens <i>f</i> 4.5, No. 36 . . . . .	375.00
Graflex Roll Holder, No. 54 . . . . .	16.00
Graflex Cut Film Holder . . . . .	4.00
Graflex Cut Film Magazine . . . . .	18.00
Graflex Film Pack Adapter . . . . .	8.50
Graflex Plate Holder . . . . .	4.00
Graflex Plate Magazine . . . . .	18.00
Sole Leather Carrying Case . . . . .	26.50
Extra Lens Board . . . . .	1.50
Graflex Roll Holder Film—6 Exposures . . . . . No. 154	.95





## SPEED GRAPHIC

4 x 5

Dimensions:  $6\frac{1}{2}''$  x  $3\frac{5}{8}''$  x  $7\frac{1}{4}''$ .

Weight:  $3\frac{1}{2}$  lbs.

Focal Capacity:  $13\frac{1}{2}''$ .

Size of Lensboard:  $4''$  x  $4''$ .

**T**HIS camera contains all of the regular Graflex features, with the exception of the Focusing Hood. Focus is accomplished in two ways; by a distance scale attached to the extension bed or through the rear ground glass.

The large 4 x 4 lensboard will accommodate ultra speed lenses as well as between lens shutter when the user desires this type as an auxiliary to the Focal Plane Shutter.

Regularly adapted for Graphic Plate or Film Holders and Film Pack Adapter, the Speed Graphic is also obtainable with special back to accommodate interchangeable Graflex Plate or Film Holders, Film Pack Adapters, Cut Film or Plate Magazines, and Roll Film Holders.



In appearance, compactness, and in ability the Speed Graphic is perhaps the finest of folding cameras. Press photographers praise it—proof enough that it is a capable camera, equal to a wide variety of difficult jobs.

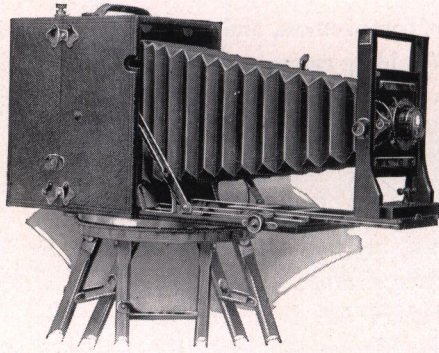
*Focal plane shutter gives twenty-four speeds from 1/10 to 1/1000 and any time desired. A cut film holder, a film pack adapter or a plate holder can be used on the regular Graphic back. When fitted with the Graflex back, however, this camera accommodates cut film, roll film, film packs and plates in the interchangeable Graflex accessories listed below.*

## PRICES

	4 x 5
Speed Graphic, without lens, including one cut film holder (plate holder optional) . . . . .	\$ 75.00
With Kodak Anastigmat Lens <i>f</i> 4.5 No. 32 . . . . .	116.00
With Schneider <i>f</i> 3.5 6½" Lens in Compound Shutter . . . . .	135.00
*Speed Graphic (Graflex back), without lens . . . . .	88.00
*With Kodak Anastigmat Lens <i>f</i> 4.5 No. 32 . . . . .	129.00
*With Schneider <i>f</i> 3.5 6½" Lens in Compound Shutter . . . . .	148.00
Graphic Plate Holder . . . . .	2.50
Graphic Cut Film Holder . . . . .	2.50
Film Pack Adapter (for use on Speed Graphic with regular back) . . . . .	2.00
Graflex Roll Holder, No. 53 . . . . .	13.50
Graflex Cut Film Holder . . . . .	3.00
Graflex Cut Film Magazine . . . . .	15.50
Graflex Film Pack Adapter . . . . .	6.50
Graflex Plate Holder . . . . .	3.00
Graflex Plate Magazine . . . . .	15.50
Leather Case for camera and six holders . . . . .	12.50
Kodak Pictorial Diffusion Disk, No. 32 . . . . .	5.00
Extra Lens Board . . . . .	1.50
Graflex Roll Holder Film Cartridge, 6 exposures, No 153 . . . . .	.55

\*When the Graflex type of back is desired, please specify, "Speed Graphic with Graflex back."





## CIRKUT CAMERA No. 10

**L**ANDSCAPES, groups and other extensive subjects can be photographed in their entirety with the No. 10 Cirkut. It is a revolving panoramic camera, making negatives 6, 8 or 10 inches in width and of any length required up to 20 feet.

Clockwork turns the camera smoothly on the tripod head and meanwhile draws the film past a slot through which it receives light from the lens. The exposure given each point on the film is adjustable between  $1/12$  and  $1/2$  second.

Image size is controllable; the Turner-Reich Convertible Anastigmat has three focal lengths. Spacing can be changed by raising or lowering the front board. A ground glass focusing panel is built into the back. Footage scales show the length of film needed for the view and the amount that has been used from the roll. Pressing a button marks the end of a scene, for guidance in cutting later.

### DETAILS

Lens: Turner-Reich Convertible Anastigmat, Series II. Focal lengths: complete,  $10\frac{1}{2}$  in.; front element, 24 in.; rear element, 18 in. Shutter: double valve type.

Accessories: Cirkut gears for regulating speed, Cirkut Tripod Head, Professional Tripod Legs, two carrying cases.

Dimensions of camera, 9 x 11 x 12 in. Focal capacity, 27 in. Weight, 19 lbs. Size of lens board, 4 x 4 inches.

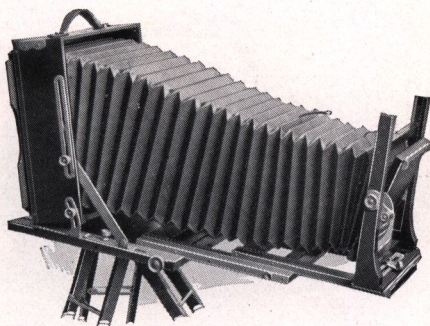
### PRICES

No. 10 Cirkut Camera, complete as described above . . . . . \$405.00

Eastman Film for No. 10 Cirkut Camera (White Label):

6 in. x 5 ft., \$1.45; 6 in. x 10 ft., \$2.90; 6 in. x 15 ft., \$4.35; 8 in. x 20 ft., \$7.60;  
8 in. x 5 ft., \$1.90; 8 in. x 10 ft., \$3.80; 8 in. x 15 ft., \$5.70; 10 in. x 15 ft., \$7.20;  
10 in. x 4 ft., \$1.90; 10 in. x 6 ft., \$2.90; 10 in. x 10 ft., \$4.80; 10 in. x 20 ft., \$9.60





# CENTURY UNIVERSAL CAMERA

## *The Most Flexible Commercial Camera Made*

*Durable and Rich in Appearance*—All wood parts are of selected straight grained cherry, lacquer-coated to withstand all sorts of climatic conditions, and finished in dark mahogany. Metal parts (duraluminum and brass) of “gun metal” finish. Reversible back. Extreme swings both front and back. Extreme lateral adjustments. Rising and falling front with rack and pinion. Sliding panels. Reversible lensboard. Two tripod sockets. Plumb bob. Genuine leather bellows. Sole leather handle. Double bed brace.

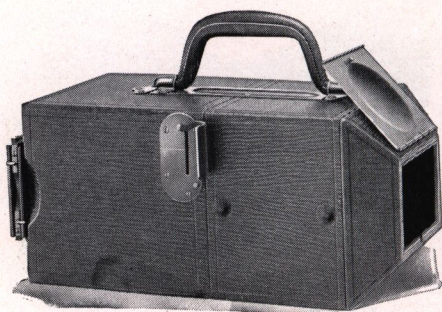
### DETAILS

Dimensions (when folded).....	4½x11½x11¾
Bellows Extension.....	30 inches
Lensboard.....	6x6
Camera Weight.....	9¾ lbs.

### PRICES

8x10 Century Universal Camera, without lens or carrying case, with one plate or film holder.....	\$85.00
With Fibre Carrying Case (single compartment) for camera and one holder	90.00
With Fibre Carrying Case (four compartment) for camera, extra holders, tripod, and focusing cloth.....	97.00
8x10—5x7 Reducing Back with one plate or film holder.....	16.00
Extra Lensboard.....	1.25
5x7 Century Plate or Film Holders .....	2.75
8x10 Century Plate or Film Holders .....	4.00
8x10 Graflex Focal Plane Shutter .....	41.00





## FOLMER FINGER PRINT CAMERA



From a Finger Print  
Camera Negative

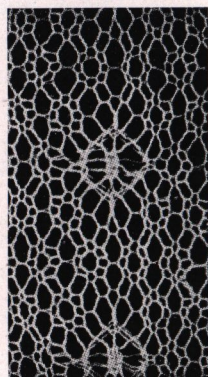
NEW uses constantly claim this unique camera. Though designed primarily for detective service, it is suitable for photographing patterns, labels, signatures, printed bits and similar subjects because it produces exact sized copies.

This camera furnishes its own light. Four tiny bulbs in the front are supplied with current by batteries located within the instrument. During an exposure the opening is held against the surface that is to be photographed and the lamps illuminate it brightly.

Negative size is  $2\frac{1}{4} \times 3\frac{1}{4}$  inches. One cut film holder or one plate holder is furnished. The back will take the  $2\frac{1}{4} \times 3\frac{1}{4}$  Graflex attachments, however, so that roll film or packs can be used. The lens is a Kodak Anastigmat  $f6.3$ , sharp-cutting and fast. The shutter is a dependable device, easy to set and equally easy to release.

### DETAILS

Dimensions,  $11\frac{3}{4} \times 6 \times 6$  in. Weight,  $5\frac{1}{2}$  lbs.



An exact scale copy of a lace sample. Only one-third of the picture is shown here.

### PRICES

FOLMER FINGER PRINT CAMERA, with one cut film holder or one plate holder, two batteries, six extra lamps, Kodak Anastigmat Lens $f6.3$ . . . . .	\$55.00
Leather Case for camera . . . . .	13.00
For prices of $2\frac{1}{4} \times 3\frac{1}{4}$ Graflex holders, magazines, film pack adapter and of films, see page 7.	





## CROWN TRIPOD

**S**TEADINESS and strength are required of a tripod. Even a heavy camera cannot wiggle the rigid, staunch Crown. The wood is selected cherry, oil soaked and then shellacked to make it weatherproof.

The head of this tripod is large and substantial. Near its edge is a second screw socket so that the weight of a camera can be properly balanced when the bellows is extended.

Expansion brackets keep the legs firmly attached when in use; binding screws cannot be lost; joints fit snugly.

A well-designed, and sturdily built tripod.

### DETAILS

Length closed	Length extended	Weight	Diameter of top	Weight of camera carried
No. 1—16 in.	4 ft., 4 in.	36 oz.	4 in.	6 lbs.
No. 2—17 in.	4 ft., 8 in.	65 oz.	6 in.	9 lbs.
No. 4—20 in.	5 ft., 6 in.	90 oz.	6½ in.	18 lbs.

Crown Tripod . . . . No. 1, \$10.00    No. 2, \$11.00    No. 4, \$13.50

## CARRYING CASE FOR CROWN TRIPODS

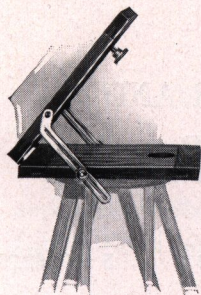
A sole leather case consisting of a long compartment for the Crown Tripod legs, and a smaller compartment to hold the tripod top.

### PRICES

No. 1, for Tripod No. 1 . . . \$7.50    No. 2, for Tripod No. 2 . . . \$8.50  
 No. 4, for Tripod No. 4 . . . \$10.00

## CROWN TILTING TRIPOD TOP

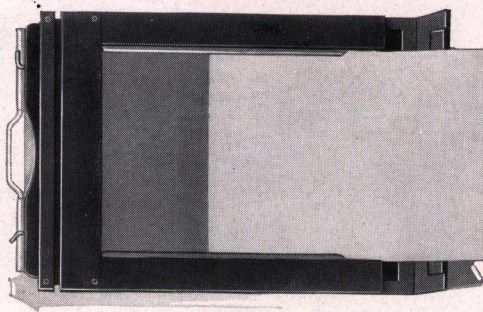
With this device in use on a Crown Tripod, the camera can be pointed upward or downward, at any angle from horizontal to vertical, without adjusting the tripod legs.



### PRICES

No. 1 Crown Tilting Tripod Top, for 4 in. head . . \$3.75  
 No. 2 Crown Tilting Tripod Top, for 6 in. head . . \$4.00  
 No. 4 Crown Tilting Tripod Top, for 6½ in. head . \$4.50





## GRAFLEX CUT FILM HOLDER

**T**HROUGH this device, the advantages of making negatives on cut film become available to the owner of any Graflex except the Autographic models.

When the dark slide is withdrawn, the end of the frame opens on a hinge as shown in the above illustration. The film slips in or out smoothly, making loading and unloading easy indeed. And the film stays flat, held in narrow channels, the sensitized surface forming a uniform focal plane.

Fits any Graflex except the Autographic models and can remain attached, prepared, while the camera is in its regular case.

### PRICES

	2¼ x 3¼	3¼ x 4¼	3¼ x 5¼	4 x 5	5 x 7
Graflex Cut Film Holder . . . . .	\$2.50	\$2.75	\$3.00	\$3.00	\$4.00

## GRAFLEX PLATE HOLDER

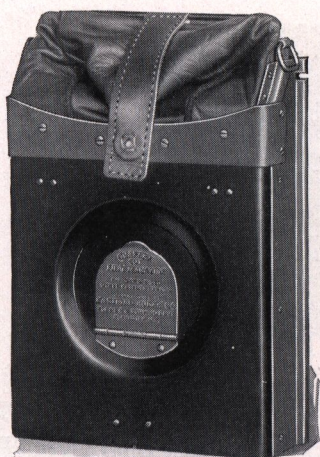
Prices given for Graflex Cut Film Holders apply also to the corresponding sizes of Graflex Plate Holders.

## GRAPHIC CUT FILM HOLDER AND GRAPHIC PLATE HOLDER

### PRICES

3¼ x 4¼, \$2.50	3¼ x 5½, \$2.50	4 x 5, \$2.50	5 x 7, \$2.75
6½ x 8½, \$3.00		8 x 10, \$4.00	





## GRAFLEX CUT FILM MAGAZINE

**T**HIS magazine carries a dozen cut films at one loading, ready for use in quick succession, each in a metal septum. By means of a sliding rod, the septum containing an exposed film is drawn into a light-tight leather bag (shown folded) and is re-inserted behind the films that have previously been used.

Each septum bears a numeral so that the number of exposures made since loading can be quickly told by looking through the ruby window that lies underneath the small spring flap on the back of the magazine.

The Graflex Cut Film Magazine can be detached from the camera at any time and one or more films removed in a dark room without waiting for all twelve to be exposed.

### DETAILS

	2¼ x 3¼	3¼ x 4¼	3¼ x 5½	4 x 5	5 x 7
Dimensions .	5⅞x3¼x1⅜	6¼x4¼x1⅜	7⅝x3⅞x1⅝	7x5x1⅝	9¼x6¼x1⅝
Weight loaded .	12 oz.	18 oz.	1½ lbs.	1½ lbs.	2½ lbs.

### PRICES

	2¼ x 3¼	3¼ x 4¼	3¼ x 5½	4 x 5	5 x 7
Graflex Cut Film Magazine . .	\$13.00	\$14.50	\$15.50	\$15.50	\$18.00

## GRAFLEX PLATE MAGAZINE

This attachment is similar to the Graflex Cut Film Magazine, but is necessarily bulkier, and heavier when loaded. Same prices as for the Graflex Cut Film Magazine.





## GRAFLEX ROLL HOLDER

**R**OLL FILM loads in daylight and, with a Kodak Film Tank, develops in daylight. The roll holder makes these advantages possible with any Graflex. After inserting the dark slide, the holder can be detached and re-attached between exposures but it need not come off when the camera goes into the case.

Graflex Roll Holders are numbered in accordance with the corresponding sizes of Graflex Roll Holder Film Cartridge.

### PRICES, GRAFLEX ROLL HOLDERS

3¼ x 2¼, No. 50, \$12.50    4¼ x 3¼, No. 51, \$12.50    5½ x 3¼, No. 52, \$13.50  
5 x 4, No. 53, \$13.50    7 x 5, No. 54, \$16.00

*Graflex Roll Holders fit only Graflex Cameras  
and Graphic Cameras with Graflex backs*

## GRAFLEX ROLL HOLDER FILM CARTRIDGES

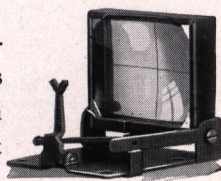
### 6 EXPOSURES, FOR GRAFLEX ROLL HOLDERS

3¼ x 2¼, No. 150, \$0.25    4¼ x 3¼, No. 151, \$0.45    5½ x 3¼, No. 152, \$0.55  
5 x 4, No. 153, \$0.55    7 x 5, No. 154, \$0.95

*To avoid error, please order film by number*

## GRAPHIC SIGHT FINDER

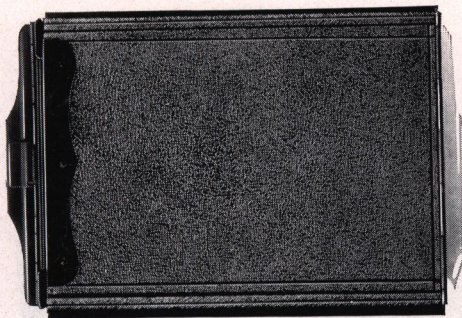
**A** DIRECT-VISION, folding sight finder, to be attached to the top of the camera. The subject is centered on the image area when the intersection of the lines engraved on the finder lens is in direct aim with the notch in the top of the vertical sight bar.



### PRICES

	3¼x4¼	3¼x5½	4x5	5x7
Graphic Sight Finder . . . . .	\$4.00	\$4.50	\$4.50	\$5.25





## GRAFLEX FILM PACK ADAPTER

**K**ODAK Film Packs, daylight loading, are usable in any Graflex except the Autographic Models, with the aid of this attachment.

### PRICES

	$2\frac{1}{4} \times 3\frac{1}{4}$	$3\frac{1}{4} \times 4\frac{1}{4}$	$3\frac{1}{2} \times 5\frac{1}{2}$	$4 \times 5$	$5 \times 7$
Graflex Film Pack Adapter . . .	\$5.50	\$5.50	\$6.50	\$6.50	\$8.50

## KODAK FILM PACKS

Each pack contains twelve non-curling, non-halation, properly orthochromatic films. Single films can be taken from the pack in a darkroom without waiting until all are exposed.

After each picture a paper tab is withdrawn and torn off, uncovering an unused film, ready for the next subject.

### PRICES

$2\frac{1}{4} \times 3\frac{1}{4}$	$3\frac{1}{4} \times 4\frac{1}{4}$	$3\frac{1}{4} \times 5\frac{1}{2}$	$4 \times 5$	$5 \times 7$
No. 520, \$0.50	No. 518, \$0.90	No. 522, \$1.10	No. 523, \$1.10	No. 515, \$1.90

## KODAK CUT FILM

Kodak Cut Film is supplied in two emulsions, Regular Speed and Super Speed.

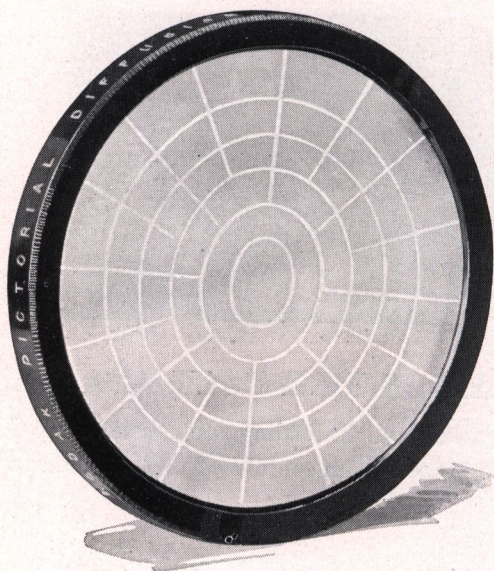
Super speed is the film to use when the subject requires a short exposure or when the light is difficult.

Kodak Cut Film can be used in a Cut Film Holder, the Graflex Cut Film Magazine, or, with Sheaths, in any Plate Holder.

### PRICES

	$2\frac{1}{4} \times 3\frac{1}{4}$	$3\frac{1}{4} \times 4\frac{1}{4}$	$3\frac{1}{4} \times 5\frac{1}{2}$	$4 \times 5$	$5 \times 7$
Kodak Cut Film <i>Regular Speed</i> , doz.	\$0.45	\$0.65	\$0.90	\$0.90	\$1.45
Kodak Cut Film <i>Super Speed</i> , doz.	.50	.75	1.00	1.00	1.60





## KODAK PICTORIAL DIFFUSION DISK

Softness of line adds charm to almost any picture, particularly to portraits and landscapes. The Kodak Pictorial Diffusion Disk, slipped over the lens, gives a delightful glow without the obscurity that is found in an out-of-focus image.

Detail is definite, but gentle.

Kodak Pictorial Diffusion Disks, now obtainable for use on four Kodak Anastigmats  $f$  4.5, bear the numerical designations of the lenses that they fit.

Please order by number.

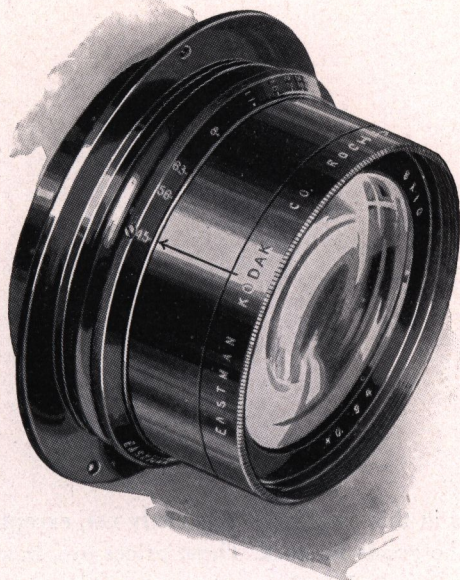
### PRICES, KODAK PICTORIAL DIFFUSION DISK

No. 31, \$5.00	No. 32, \$5.00	No. 33, \$5.00	No. 34, \$6.00
----------------	----------------	----------------	----------------

Inside diameter of flange: No. 31,  $1\frac{7}{8}$  in.; No. 32,  $1\frac{1}{4}$  in.; No. 33, 2 in.; No. 34,  $2\frac{3}{8}$  in.



## KODAK ANASTIGMAT F 4.5



**K**ODAK Anastigmat *f* 4.5 is the triumphant result of new world methods applied to an old world art. This lens is designed in the Kodak laboratories and executed in the Kodak workrooms. And it is tested by such standards of optical excellence that for definition and for flatness of field it is the peer of any lens made anywhere at any price.

Fully open, the Kodak Anastigmat *f* 4.5 cuts cleanly, to the very edge of the film. Such sharpness assures sparkling contact prints and rich enlargements. Toward detail in the picture, the Kodak Anastigmat at *f* 4.5 admits an abundance of light that makes well-timed negatives easy to get, even in difficult circumstances.

Each Kodak Anastigmat *f* 4.5 is mounted as shown in the illustration, complete with an iris diaphragm controlled by a milled ring on which the *f* markings are engraved.

No.	Size of Film covered with Stop <i>f</i> 4.5, in Inches	Equivalent Focus in Inches	Price of Lens in barrel with Iris Diaphragm
30	2¼ x 3¼	4¾	\$ 31.00
31	3¼ x 4¼	5½	35.25
32	4 x 5	6¾	41.00
33	5 x 7	7½	50.00
34	5 x 8	8½	62.50
35	6½ x 8½	10	108.00
36	8 x 10	12	150.00



## TERMS

**P**RICES in this catalogue are strictly net, except to regular dealers who carry the goods in stock. These prices are, however, subject to change without notice. For the convenience of our customers, we recommend that they make their purchases from a dealer in photographic goods, as by so doing they can save both transportation charges and time.

**THE FOLMER GRAFLEX CORPORATION**

**ROCHESTER, N. Y.**



THE SIMPLIFIED  
**GRAFLEX**



THE UNIVERSAL CAMERA FOR  
MAKING BETTER PICTURES