

1914



PREMO
CAMERAS

✓

PREMO CAMERAS

1914

MANUFACTURED BY
ROCHESTER OPTICAL DIVISION
EASTMAN KODAK COMPANY
ROCHESTER, N. Y.

FOR TOURISTS

PREMO Cameras and Premo Film Packs may be obtained of practically every photographic dealer in this country. They may be had also in any part of the world in most photographic establishments, and always at the following agencies:

LONDON—Kodak, Limited, Kingsway, W. C.; 60 Cheapside, E. C.; 115 Oxford Street, W.; 171-173 Regent Street, W.; 59 Brompton Road, S. W.; 40 Strand, W. C.; 1 and 2 Gracechurch St., E. C.

LIVERPOOL—Kodak, Limited, 96 Bold Street.

BIRMINGHAM—Kodak, Limited, 45 Corporation Street.

NEWCASTLE—Kodak, Limited, 34 Grainger Street.

DUBLIN—Kodak, Limited, 89 Grafton Street.

GLASGOW—Kodak, Limited, 72-74 Buchanan Street.

PARIS—Kodak, Société Anonyme Francaise, Avenue de l'Opera 5; Place Vendôme 4; Boulevard des Italiens 9.

LYONS—Kodak, Société Anonyme Francaise, Rue de la Republique 26.

LAUSANNE—Kodak, Société Anonyme, Avenue du Tribunal Federal 13.

MADRID—Kodak Sociedad Anonima, 4 Puerta del Sol.

NICE—Kodak, Société Anonyme Francaise, Avenue de la Gare 34.

BERLIN—Kodak Gesellschaft m. b. H., Leipzigerstrasse 115-116; Unter den Linden 26; Tauentzienstrasse 14.

BRUSSELS—Kodak, Limited, Rue de l'Ecuyer 36.

COPENHAGEN—Kodak Aktieselskab, Ostergade 1.

VIENNA—Kodak Gesellschaft, m. b. H., 1 Kärntnerstrasse 16.

ST. PETERSBURG—Kodak, Limited, Bolschaia Konnuschenaia 19.

MOSCOW—Kodak Limited, Petrovka, 15, 16.

MILAN—Kodak Societa Anonima, Corso Vittorio Emanuele 34.

ROME—Kodak Societa Anonima, Corso Umberto I. 399.

NAPLES—Kodak Societa Anonima, Via Roma 288.

VENICE—Kodak Societa Anonima, Piazza S. Marco 52.

BUDAPEST—Kodak társaság K. F. 4, Vaci-utca 9.

ALEXANDRIA—Kodak (Egypt) Societe Anonyme Rue Chérif Pacha 30.

CAIRO—Kodak (Egypt) S. A. Opera Square.

CAPETOWN—Kodak (S. Africa) Limited, 92-96 St. Georges St.

MELBOURNE—Kodak (Australasia) Ltd., 284 Collins Street.

SYDNEY—Kodak (Australasia) Ltd., 379 George Street.

BRISBANE—Kodak (Australasia) Ltd., 78 Queen Street.

ADELAIDE—Kodak (Australasia) Ltd., 97 Rundle Street.

WELLINGTON—Kodak (Australasia) Ltd., 9 Mercer Street.

BOMBAY—Kodak, Limited, Cook's Building, Hornby Road.

ALL YOU COULD WISH FOR

EASE of operation and convenience in carrying, lens and shutter equipment, quality of results and price—these, together with unquestioned reliability, are the factors which logically should determine the selection of a camera in every case.

Anyone who contemplates the purchase of a camera, and who will make his selection upon this basis will find in the Premo line all that he could wish for.

The perfection of the daylight loading Premo Film Pack system has made the Premo the simplest of all cameras to load and operate. (See description, page 4). And the film pack takes up so little room that it is possible to make the Premo Film cameras remarkably light and compact. There are some that will go into even a boy's pocket or a lady's hand-bag.

Every Premo is fitted with a shutter of the most efficient type in its particular grade, and all lenses, from the meniscus to the anastigmat, are carefully tested by the highest standard and promptly rejected if they fail to come to that standard.

With these selected optical equipments and the fact that Premo Film Pack Film is taken from the same stock as the Eastman N. C. there can be no question of the quality of results.

Premos are so simple in construction and so compact in form that they can be furnished at very moderate prices, considering the quality which is built into every Premo camera. For those who wish to invest very little in a photographic outfit, there are thoroughly practical Premos at as small a price as \$1.50. On the other hand, for those who want the very best to the last detail, there are Premos up to \$150.00.

As for reliability, Premos are backed, not only by over thirty years of manufacturing experience, but also by the policy of the Eastman Kodak Co., of allowing nothing to be placed on the market which will not do all that is claimed for it.

Step into the dealer's, examine these cameras for yourself and you will find it very easy to make a selection of a Premo that will be all that you could wish for in a camera.

ROCHESTER OPTICAL DIVISION,
EASTMAN KODAK CO., ROCHESTER, N. Y.

THE PREMO FILM PACK

IN our advertising, we often refer to Premos as being the smallest and lightest, the easiest to load and operate of all cameras. This is true, because the Premo Film Pack, with which most of our cameras are loaded, requires very little space when in use and itself is constructed upon such a simple, convenient principle.

Packed flat, the Premo Film Pack can be loaded in Premo Film cameras by two operations. Just open back of camera and drop in pack—then close back and it's done. This is the easiest and quickest method of loading any camera.

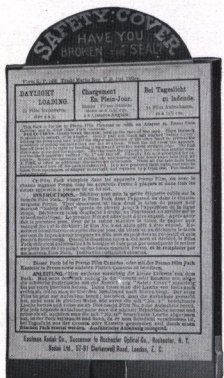
To prepare for the first exposure, simply pull out from the pack the paper tab marked "Safety Cover." Then to change films for successive exposures, merely pull out successive tabs. Upon pulling out the twelfth tab the pack is rendered light-tight, so that it may be safely removed in any light.

With these advantages of easy loading and operating, the Premo Film Pack has another most important one—the removal of one or more films for development at any time.

This feature is found in no other film system, and obviates the necessity of exposing all the films before any can be developed.

And development has been made very simple. As we have said, anyone who follows directions in our instruction books can make good exposures, and if the exposures are right, development, heretofore, a bugbear to many amateurs, is certain with the Premo Film Pack Tank.

All one has to do is to dissolve the developing powders in the tank, bring the solution to the proper temperature and put in the films. See pages 34-35.



Easy to Load.

THE PREM O A D A P T E R

WITH the introduction of the Premo Film Pack it was found that a simple film pack holder or adapter, modeled upon the ordinary plate holder, would make it a simple matter to load any Premo plate camera with film packs.

The Premo Film Pack Adapter has the general size and appearance of a plate holder. But it has a hinged back which can be easily opened, the film pack dropped in place, back closed, and the adapter then loaded into the plate camera just as an ordinary plate holder is.

To make exposures, the slide is withdrawn, the "safety cover" pulled out and the film pack operated for successive exposures just as in film cameras.

Then at any time the slide may be re-inserted, the adapter removed and the subject sharply focused on the ground glass by precisely the same method you would follow in using glass plates.

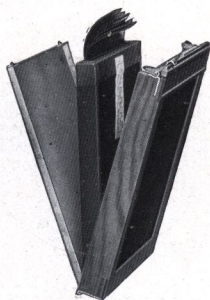
Thus a Premo plate camera will take films or plates with equal facility; it offers the daylight loading and other features of the Premo Film Pack, as well as every advantage of the ordinary focusing camera; and many of these Premos are as compact as purely film cameras.

With the Premo Film Pack Adapter, also, it is an easy matter to make multiple pictures (two or more exposures) on one film.

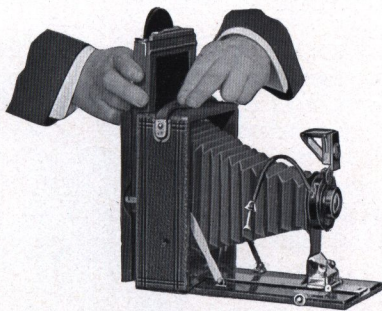
This is done by manipulating the slide in connection with the film pack tab, and the procedure is

fully explained in the Premo manuals.

For prices on Premo Film Packs and Adapters, see page 44.



Premo Film Pack Adapter.



The Adapter is loaded just like a Plate Holder.

KODAK BALL BEARING SHUTTERS

THE new Kodak Ball Bearing shutter marks another step forward in convenience for the amateur. As the name implies, the leaves of this shutter work on ball bearings, giving it remarkable smoothness and precision, and as the leaves open and close in the shape of a star, the very maximum of light is admitted for each exposure.



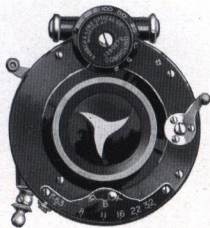
Another feature of this shutter is the cable release—replacing the usual rubber bulb and tube. This does away with shutter pumps, is practically indestructible, and removes all the objections found with rubber for this purpose. The shutter is also supplied with finger release, iris diaphragm, and has variable indicated speeds of 1/25, 1/50

1/100 second, as well as bulb and time exposure actions.

It is regularly supplied with the Film Premo No. 1 and Pocket Premo C. A modified type similar to the above but fitted with bulb and tube instead of cable release is supplied with the Premo No. 8. The No. 0 Ball Bearing Shutter supplied with the Premoette, Jr. No. 1 operates with finger release only and is graduated for speeds of 1/25 and 1/50 second.

COMPOUND SHUTTER

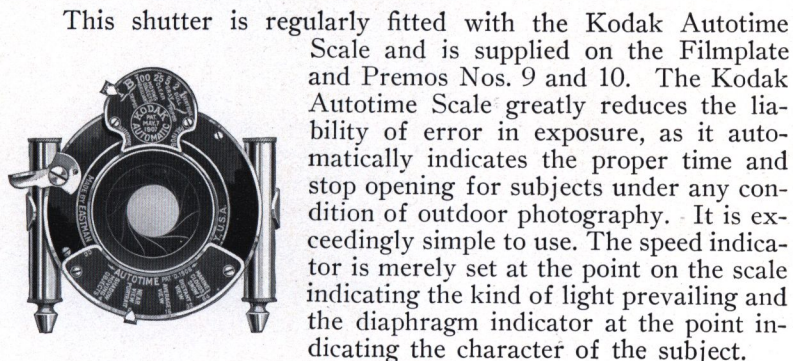
The Compound Shutter is an automatic and setting shutter combined. Automatically, either time or bulb exposures may be made, while it may be set for speeds of from 1 to 1/150, 1/200 and 1/250 second, according to size of shutter. The shutter leaves are formed of segments opening in star shape, giving even illumination over the entire plate the instant the exposure is started, and it has an iris diaphragm. Case is made of aluminum, and accurate adjustments can be made with shutter in any position. It may be operated by either bulb or finger release.



The Compound Shutter is regularly supplied on the Premoette Jr. Specials Nos. 1 and 1A, Filmplate Premo Special and Six-Three Premo Cameras.

KODAK AUTOMATIC SHUTTER AND KODAK AUTOTIME SCALE

THE Kodak Automatic Shutter is carefully adjusted for time, bulb and instantaneous exposures. It is also graduated for fractional parts of a second, and is unusually accurate.



This shutter is regularly fitted with the Kodak Autotime Scale and is supplied on the Filmplate and Premos Nos. 9 and 10. The Kodak Autotime Scale greatly reduces the liability of error in exposure, as it automatically indicates the proper time and stop opening for subjects under any condition of outdoor photography. It is exceedingly simple to use. The speed indicator is merely set at the point on the scale indicating the kind of light prevailing and the diaphragm indicator at the point indicating the character of the subject.

These scales are also supplied for the following shutters when fitted with double lenses only. They can be readily attached by any amateur. In ordering always designate by Style letter as below.

- Style A. For use with Kodak Ball Bearing shutter, $2\frac{1}{2} \times 4\frac{1}{4}$ and $3\frac{1}{4} \times 4\frac{1}{4}$.
- Style AA. For use with Kodak Ball Bearing shutter, $3 \times 5\frac{1}{4}$, $3\frac{1}{4} \times 5\frac{1}{2}$ and 4×5 .
- Style B. For use with F. P. K. Automatic, $2\frac{1}{2} \times 4\frac{1}{4}$ and $3\frac{1}{4} \times 4\frac{1}{4}$, No. 1 S. V. Automatic, or No. 1 B. & L. S. V. Automatic shutters.
- Style BB. For use with F. P. K. Automatic, $3\frac{1}{4} \times 5\frac{1}{2}$ and 4×5 , No. 2 S. V. Automatic, or No. 2 B. & L. S. V. Automatic shutters.
- Style C. For use with Kodak Automatic shutter, $3\frac{1}{4} \times 4\frac{1}{4}$.
- Style CC. For use with Kodak Automatic shutter, $3\frac{1}{4} \times 5\frac{1}{2}$ and 4×5 .
- Style D. For use with B. & L. Automatic and Century Automatic shutters, $3\frac{1}{4} \times 4\frac{1}{4}$.
- Style DD. For use with B. & L. Automatic and Century Automatic shutters, $3\frac{1}{4} \times 5\frac{1}{2}$ and 4×5 .
- Style DDD. For use with B. & L. Automatic shutter, $4\frac{1}{4} \times 6\frac{1}{2}$.
- Style H. For use with No. 0 Compound shutter, $2\frac{1}{2} \times 4\frac{1}{4}$ and $3\frac{1}{4} \times 4\frac{1}{4}$.
- Style HH. For use with No. 1 Compound shutter, $3\frac{1}{4} \times 5\frac{1}{2}$ and 4×5 .
- Style HHH. For use with No. 2 Compound shutter, $4\frac{1}{4} \times 6\frac{1}{2}$ and 5×7 .

PRICES.

Any style up to H	-	-	-	-	-	-	-	-	-	\$1.00
Styles H, HH and HHH	-	-	-	-	-	-	-	-	-	1.50

P R E M O J U N I O R C A M E R A S



THE very simplest camera for making pictures is a camera of the fixed focus type. Such cameras require no focusing or estimating of distances, and as they do not have to be opened, are always ready for immediate action.

The Premo Juniors are cameras of this kind and they are even easier in operation than the usual camera of this type, possessing, as they do, the remarkable simplicity of loading and operating provided by the Premo Film Pack.

To make a picture with one of these cameras is a matter of seconds only. The first step is to load the camera, and this is effected in any light by opening the back, dropping in Premo Film Pack and then closing the back.

Second, set the shutter for time or instantaneous exposure as required by the subject. This is accomplished by merely moving a lever up or down.

Then glance at the finder, which reflects the image on a reduced scale, just as it will appear in the finished picture, press a lever and the exposure is made. To change films for successive exposures, pull out successive film pack tabs as explained on page 4.

PREMO JUNIOR CAMERAS

The Premo Juniors are particularly well adapted for the use of boys and girls, by reason of their low cost, substantial construction and simple operation. This does not mean that the camera is not suitable for older people, for there are many grown up amateurs who prefer cameras of this simple type, and are using Premo Juniors with marked success.

For all ordinary work, such as portraiture, snap shots in good light and average landscapes, they are capable of producing very good results. These cameras are all fitted with tested lenses, automatic shutters and horizontal and vertical finders. They are substantially made to withstand hard knocks, covered with imitation leather and attractive in appearance.

The negatives made with these cameras are of such quality as to yield very good enlargements and any amateur can make his own enlargements by use of the Brownie Enlarging Camera described on Page 37.

The Nos. 1, 1A, 3 and 4 are precisely alike, as shown in illustration, in practically all details excepting size. The No. 0 is somewhat different in construction, but works upon the same principle and makes equally good pictures in its size.

SPECIFICATIONS.

Capacity, 12 exposures without reloading. Size of Camera, No. 0, $2\frac{1}{4} \times 3\frac{3}{8} \times 5\frac{1}{4}$ in.; No. 1, $3\frac{1}{8} \times 4\frac{1}{2} \times 5\frac{3}{4}$ in.; No. 1A, $3\frac{1}{2} \times 5\frac{1}{2} \times 5\frac{7}{8}$ in.; No. 3, $4 \times 5\frac{1}{2} \times 5\frac{3}{4}$ in.; No. 4, $4\frac{3}{4} \times 6\frac{1}{4} \times 6\frac{1}{2}$ in. Weight, No. 0, 7 ounces; No. 1, 11 ounces; No. 1A, 14 ounces; No. 3, 20 ounces; No. 4, 25 ounces. Shutters, Rotary Automatic, all excepting No. 0, with diaphragm stops. Lens No. 0 and No. 1 Meniscus; No. 1A, 3 and 4, Meniscus Achromatic. Finders, two. Tripod Sockets, No. 0, none; Nos. 1 1A, 3 and 4, two.

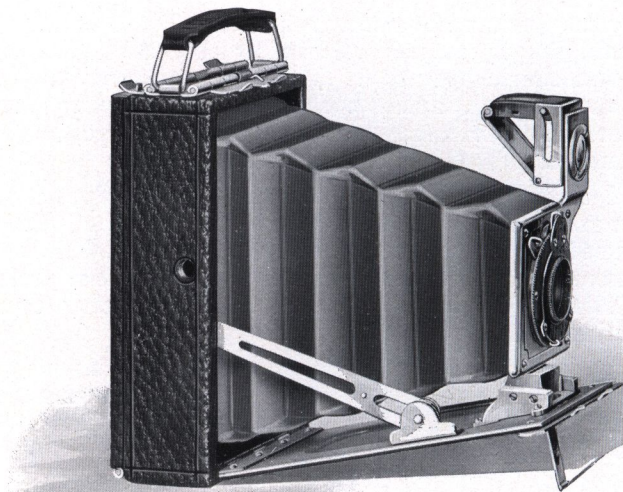


Premo Jr. No. 0.

PRICES.

	No. 0 $1\frac{3}{4} \times 2\frac{3}{8}$	No. 1 $2\frac{1}{4} \times 3\frac{3}{8}$	No. 1A $2\frac{1}{2} \times 4\frac{1}{4}$	No. 3 $3\frac{1}{4} \times 4\frac{1}{4}$	No. 4 4×5
Premo Junior, Meniscus Lens, Automatic Shutter - -	\$1.50	\$2.00			
Ditto with Meniscus Achromatic Lens - - -			\$3.00	\$4.00	\$5.00
Carrying Case - - -	.60	.75	.85	1.10	1.25
Premo Film Pack, (12 exposures) - - -	.25	.40	.50	.70	.90
Kodak Portrait Attachment -		.50	.50	.50	.50

P R E M O E T T E J U N I O R



TO see this little camera is to be instantly attracted by it. Made largely of aluminum it is just a trifle larger than the picture it makes. It is extremely light in weight. It inspires confidence by its appearance and fulfills it in its results.

It will go into even a boy's pocket or a lady's hand-bag. And while these cameras are so very small in dimensions, they make good size pictures—two of the most popular of amateur sizes. The No. 1 is for $2\frac{1}{4} \times 3\frac{1}{4}$ and the No. 1A for $2\frac{1}{2} \times 4\frac{1}{4}$ pictures.

The greatest of care is taken in the selection of lenses for these cameras. For the single lens fitting only meniscus achromatic lenses which have stood rigid tests are used, and the same is true of the double lens equipment where our standard Planatograph lenses are fitted in each case. Thus these cameras will produce sharp, clearly defined pictures under ordinarily favorable conditions. And the negatives are of such quality that good enlargements up to almost any desirable size can be easily obtained from them.

For this reason many amateurs who already have larger cameras are adding these inexpensive little cameras to their photo-

P R E M O E T T E J U N I O R

graphic outfits. They can be easily carried where oftentimes the larger cameras might be inconvenient, and where larger pictures are wanted it is an easy matter to secure them by the simple process of enlargement. Any amateur can enlarge his own negatives by use of the inexpensive enlarging camera described on page 37 or his finisher will gladly do it for him.

The Premoette Jr. is fitted with the smoothly working, precise Kodak Ball Bearing Shutter, the camera is covered with genuine grain leather and is handsomely finished in every detail. And with its compact, substantial construction and capabilities for high grade work is combined that simplicity of loading and operating possible only in a Premo Film Pack camera. See page 4. In addition to these advantages any Premoette Jr. will make an excellent outfit for home portrait work when fitted with the inexpensive Kodak Portrait Attachment.

For one who desires to make a present at the holidays, or on any occasion, the Premoette Jr. makes an ideal gift. It is suitable alike for a boy or girl, a man or woman of any age.

SPECIFICATIONS.

Premoette Jr. No. 1. Capacity 12 film pack exposures without reloading. Dimensions, $1\frac{1}{2} \times 3 \times 4\frac{3}{4}$ in. Weight, 12 ozs. Lens, Meniscus Achromatic. Shutter, Kodak Ball Bearing No. 0 (See page 6). Finder, collapsible, reversible, brilliant. Tripod Socket, one.

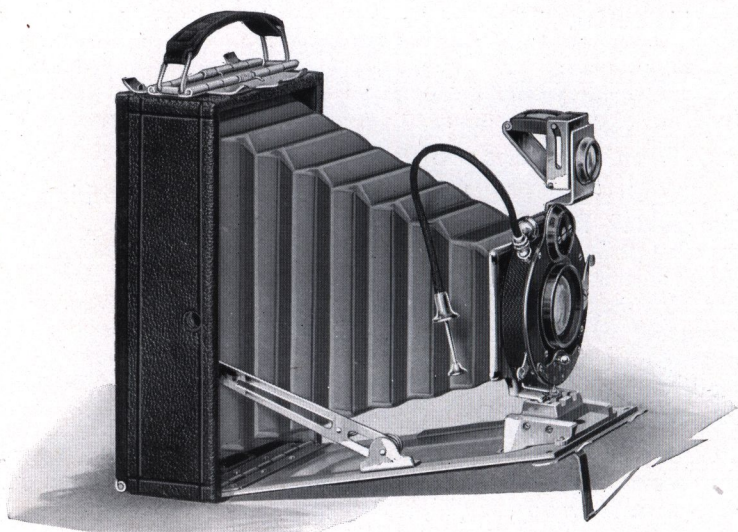
Premoette Jr. No. 1A. Capacity 12 film pack exposures without reloading. Dimensions, $1\frac{3}{4} \times 3\frac{1}{4} \times 5\frac{3}{4}$ in. Weight, 18 ozs. Lens, Meniscus Achromatic. Shutter, Kodak Ball Bearing (see page 6), but has no bulb, operating with finger release only. Finder brilliant, reversible, collapsible. Tripod Sockets, two.



PRICES.

		No. 1 $2\frac{1}{4} \times 3\frac{3}{4}$	No. 1A $2\frac{1}{2} \times 4\frac{3}{4}$
Premoette Jr. with Meniscus Achromatic Lens and			
Kodak Ball Bearing Shutter	- - - - -	\$5.00	\$ 8.00
Ditto, with Planatograph Lens	- - - - -	7.00	10.00
Carrying Case	- - - - -	1.00	1.25
Premo Film Pack (12 exposures)	- - - - -	.40	.50
Kodak Portrait Attachment,	- - - - -	.50	.50

P R E M O E T T E J R . S P E C I A L



SO compact, so generally desirable is the Premoette Jr. that there are many amateurs among the more serious, particular workers, who have wished for a camera of the same type with the very maximum of photographic efficiency.

For the average amateur the regular Premoette Junior will be found eminently satisfactory, but for those who insist upon the best to be had, who demand a camera capable of making good pictures under all conditions where pictures could possibly be made, the Premoette Jr. Special is a revelation.

Here is a camera with the light weight and compactness, the ease of loading and operating of the original Premoette Jr., but with an equipment which places it on a par in capabilities, with the largest, most expensive amateur cameras made.

It is fitted with the Compound shutter with cable release, attaining a maximum speed of $1/300$ of a second in the No. 1 and $1/250$ in the No. 1A size and the Zeiss Kodak Anastigmat lens f.6.3. This lens was made expressly for hand camera work and combines depth, definition and speed to a remarkable degree.

PREMOETTE JR. SPECIAL

This equipment enables one to work under adverse conditions that the ordinarily equipped camera could not meet as, for instance snap shot work in dull lights, fast indoor portraiture, and the like. And the remarkable sharpness and depth of the negatives make them suitable for enlarging up to any size desired.

Either size can be carried in any pocket or in a lady's hand-bag. Thus, however cramped for room, one may be certain he can take along a Premoette Jr., and make as good pictures of anything he cares about, as can be made with any camera.

Aside from the difference in size, the two models are practically identical. Focusing is provided for by a series of three focusing slots in which the standard is inserted as occasion requires. The focusing block on the No. 1 folds over to permit closing the camera; in the No. 1A this is not necessary.

In keeping with its high grade equipment, we have finished this camera in the best possible manner. It is covered with genuine Persian Morocco, and the bellows is of the finest quality black leather, giving it a rich, attractive appearance.

In a word, this is the finest, most capable, handsomest small camera you ever saw—a marvel of compactness and efficiency.

SPECIFICATIONS.

Premoette Jr. No. 1 Special. Capacity 12 $2\frac{1}{4} \times 3\frac{3}{4}$ film pack exposures without reloading. Dimensions, $1\frac{1}{2} \times 3 \times 4\frac{3}{4}$ in. Weight, 13 ozs. Lens, Zeiss Kodak Anastigmat f.6.3. Shutter, compound with cable release, highest speed 1/300 second. Finder, brilliant, reversible, collapsible. Tripod Socket, one.

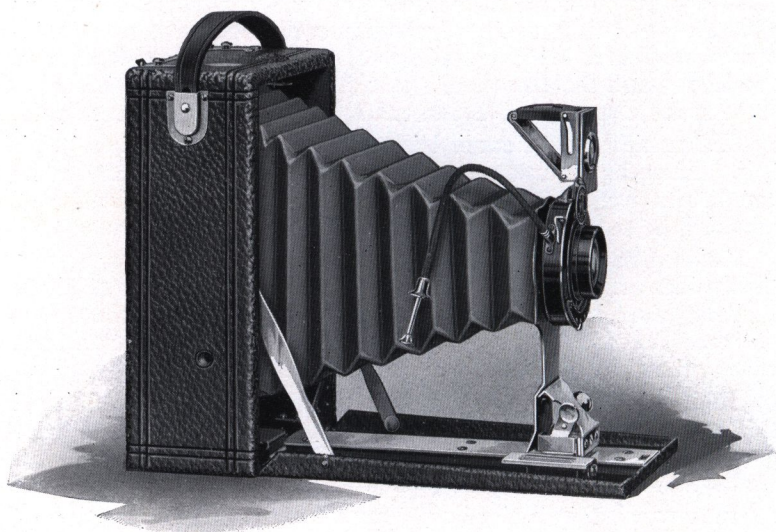
Premoette Jr. No. 1A Special. Capacity 12 $2\frac{1}{2} \times 4\frac{1}{4}$ Premo Film Pack exposures without reloading. Dimensions, $1\frac{3}{4} \times 3\frac{1}{4} \times 5\frac{3}{4}$ in. Weight, 19 ozs. Lens, Zeiss Kodak Anastigmat f.6.3. Shutter, compound with cable release, highest speed 1/250 second. Finder, reversible, brilliant, collapsible. Tripod Sockets, two.



PRICES.

	No. 1 $2\frac{1}{4} \times 3\frac{3}{4}$	No. 1A $2\frac{1}{2} \times 4\frac{1}{4}$
Premoette Jr. Special with Zeiss Kodak Anastigmat		
Lens f.6.3 and Compound Shutter - - - -	\$36.00	\$41.00
Grain Leather Carrying Case - - - - -	1.50	1.75
Premo Film Pack (12 exposures) - - - - -	.40	.50
Kodak Portrait Attachment - - - - -	.50	.50

F I L M P R E M O N o . 1



THE Film Premos are designed for those who want reliable, simply operated cameras for all-around amateur photographic work.

They are designed to be as convenient and easy of manipulation as possible, and without reference to the requirements of the specialists, are fitted only with the simple adjustments sufficient to enable the average photographer, whether experienced or not, to secure good pictures under all ordinary conditions.

Working with this idea in mind, we are able to offer these cameras not only at moderate prices, but for compactness and light weight, for ease of loading and unloading, the Film Premos have a considerable margin over any other type of cameras. This fact may be easily verified by comparative weights and dimensions and investigation of the Premo Film Pack system used in this camera. (See page 4).

As convenient and low priced as these cameras are however, the very first consideration in their construction has been the quality of results which must be produced. And the lens and

F I L M P R E M O N o . 1

shutter equipment and the film used in this camera offer the assurance that the Film Premos will produce as good pictures as any camera that can be purchased, aside from those fitted with anastigmat lenses.

The shutter of the Film Premo No. 1 is the Kodak Ball Bearing with cable release—the finest type of the single valve shutter, and the regular lens is our celebrated Planatograph, each one thoroughly tested. This equipment is the best to be had outside of the anastigmats and is amply efficient for the general run of amateur photography. The film used in the Premo Film Pack is from the same stock as the Eastman N. C.—the best in the world.

In addition to the double lens fittings these cameras are also offered with single meniscus achromatic lenses for those who prefer compact folding cameras requiring but little adjustment of focus for objects at different distances.

Film Premos No. 1 are very attractive in appearance; they are made of seasoned wood, with bed and back panel of aluminum, covered with seal grain leather, and metal parts are beautifully nickelled.

SPECIFICATIONS.

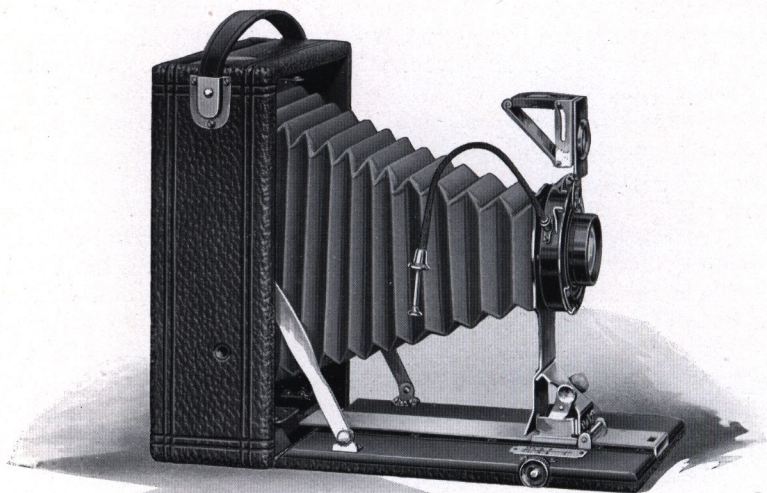
Capacity, 12 film exposures. Box, seasoned wood. Bed, aluminum. Dimensions, $3\frac{1}{4} \times 4\frac{1}{4}$, $2\frac{1}{4} \times 4 \times 5\frac{1}{2}$ in.; 3A ($3\frac{1}{4} \times 5\frac{1}{2}$), $2\frac{3}{8} \times 4\frac{3}{8} \times 7\frac{1}{8}$ in. Weight $3\frac{1}{4} \times 4\frac{1}{4}$, 19 ounces; 3A ($3\frac{1}{4} \times 5\frac{1}{2}$), 29 ounces. Lens, Planatograph. Shutter, Kodak Ball Bearing with cable release (see page 6). Tripod Sockets, two. Finder, reversible, brilliant, collapsible. Automatic Standard Clamp.



PRICES.

Film Premo No. 1, with Planatograph Lens and Kodak Ball Bearing Shutter	$3\frac{1}{4} \times 4\frac{1}{4}$	$3\frac{1}{4} \times 5\frac{1}{2}$ ^{3A}
Ditto with Meniscus Achromatic Lens and Kodak Ball Bearing Shutter	\$10.00	\$12.50
Sole Leather Carrying Case	8.00	10.50
Kodak Autotime Scale	1.50	2.00
Premo Film Pack (12 exposures)	1.00	1.00
Kodak Portrait Attachment	.70	.80
	.50	.50

P O C K E T P R E M O C



IN choosing his photographic outfit the amateur is often undecided as to whether he should select a film or a plate camera. He knows that the film camera is more convenient, that it will load and unload in daylight, and as the films are much lighter and occupy less space than dry plates, he knows that the film camera is especially desirable for use at vacation time, when traveling, and on other occasions where light weight and the greatest convenience are necessary. On the other hand, he knows that the plate camera offers the advantage of ground glass focusing between each exposure—a very desirable feature to many as it insures absolutely sharp focus and does away with the estimating of distances.

The Pocket Premo C will settle such a question for anyone. This camera will take plates or daylight loading films just as the user chooses. One can be used just as easily as the other—plates by means of an ordinary double plate holder, and films in the Premo Film Pack Adapter. (See page 5).

Thus in this camera are offered the daylight loading feature and all the other conveniences of films, together with the ground

P O C K E T P R E M O C

glass focusing feature of the plate camera. And the ground glass may be used for focusing before each exposure just as well *when using films* as when using plates.

The camera is equipped with an accurate focusing scale, so that it may be focused by scale if desired. You do not have to use the ground glass. But when you want it, it is always there. A rack and pinion attachment is supplied for ease in focusing.

These advantages are offered in a camera which is even lighter and more compact than the average purely film camera and which is so easy to operate that anyone can make good pictures with a Pocket Premo C from the start, without any previous experience. The Pocket Premo C is fitted with our Planatograph, the best rapid rectilinear lens that can be obtained, and the new Kodak Ball Bearing shutter with cable release. With this lens working at *f.8* and shutter with star-shaped leaves, the camera is very effective for general "snap-shot" work.

For the popular post card size, the 3A Pocket Premo C makes an outfit of unusual scope and capabilities at a moderate price. The camera is handsomely finished, covering is genuine leather, bellows is of red leather and metal parts are nicked.

SPECIFICATIONS.

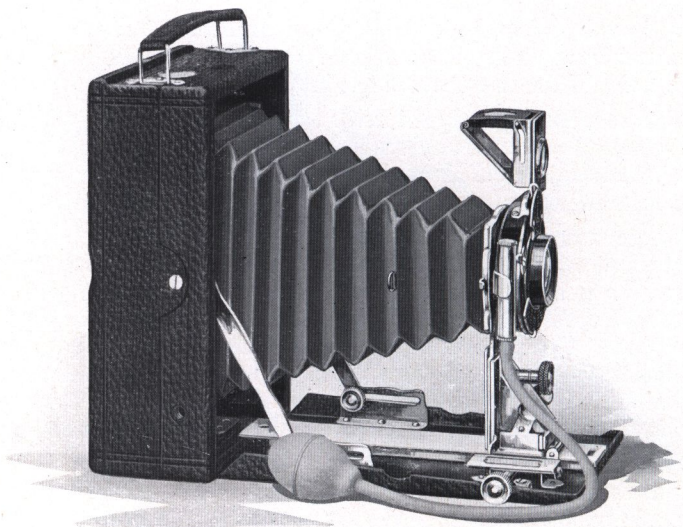
Capacity, 12 film or 2 plate exposures. Box, mahogany. Bed, mahogany, with rack and pinion for focusing. Finder, reversible, collapsible, brilliant. Tripod Sockets, two. Lens, Planatograph. Shutter, Kodak Ball Bearing with cable release (see page 6). Dimensions, $3\frac{1}{4} \times 4\frac{1}{4}$, $2\frac{1}{16} \times 4\frac{1}{4} \times 5\frac{1}{2}$ in.; 3A ($3\frac{1}{4} \times 5\frac{1}{2}$), $2\frac{1}{4} \times 5 \times 7\frac{1}{8}$ in. Weight, $3\frac{1}{4} \times 4\frac{1}{4}$, 21 ozs.; 3A ($3\frac{1}{4} \times 5\frac{1}{2}$), 32 ozs. Automatic Standard Clamp.



PRICES.

						3A
Pocket Premo C with Planatograph Lens, Kodak Ball						$3\frac{1}{4} \times 5\frac{1}{2}$
Bearing Shutter and Plate Holder	-	-	-	-	\$12.00	\$15.00
Double Plate Holder	-	-	-	-	1.00	1.00
Sole Leather Carrying Case	-	-	-	-	1.75	2.00
Kodak Autotime Scale	-	-	-	-	1.00	1.00
Premo Film Pack Adapter	-	-	-	-	1.00	1.50
Premo Film Pack (12 exposures)	-	-	-	-	.70	.80
Kodak Portrait Attachment	-	-	-	-	.50	.50

F I L M P L A T E P R E M O



ALL that we have just said of the Pocket Premo C is equally true of the Filmplate Premo, but this model has even greater capabilities. Like the Pocket Premo C it takes films or plates with equal facility, but it is fully equipped for more serious and more particular work.

It has a rack and pinion for focusing, rising and sliding front and swing bed. These latter features are of great importance in making pictures of high buildings, mountains, and the like, for they enable the user to decrease his foreground without tipping the camera proper, which causes an untrue convergence of lines toward the top of the picture.

The shutter is the Kodak Automatic, which works with bulb or finger release for time, bulb, instantaneous and retarded speeds of from 1 second to 1/100 second. It is also supplied with Kodak Autotime Scale. Under every possible outdoor light condition this scale shows at a glance just where to set diaphragm and speed lever to get properly timed exposures. The lens is the Planatograph, the best obtainable aside from the anastigmats, and each lens is carefully tested before and after being fitted to the camera.

F I L M P L A T E P R E M O

With accurate focusing scale and brilliant finder, the Filmplate Premo is a splendid snap shot instrument. Whereas, for particular work, the ground glass is instantly available for composition or focusing, whether films or plates are being used.

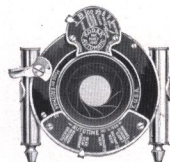
With all these advantages there is nothing bulky or cumbersome or complicated about the Filmplate Premo. It is as compact and as easily carried as the average camera for films alone. It is so simple to understand and operate that anyone who can read the instructions which come with the camera can at once start in to make good pictures, without any trouble at all.

The 3A size is especially suitable for post card work, for bust and full length portraiture and for artistic landscape compositions.

The Filmplate Premo is made in the most careful manner of the best of materials. The box is made of thoroughly seasoned wood, front bed of aluminum, all covered with selected leather of beautiful seal grain. All metal parts are highly nickeled, the bellows is of black leather, and the general appearance of the cameras is most striking. These cameras are especially suitable for home portraiture with Kodak Portrait Attachment on account of the ground glass focusing feature.

SPECIFICATIONS.

Capacity, 12 film or 2 plate exposures. Box, cherry. Bed, aluminum. Rack and pinion for fine focusing. Front, rising and sliding. Finder, reversible, brilliant, collapsible. Tripod Sockets, two. Lens, Planatograph. Shutter, Kodak Automatic with Autotime Scale (see page 7). Dimensions, $3\frac{1}{4} \times 4\frac{1}{4}$, $2\frac{1}{4} \times 4\frac{1}{8} \times 5\frac{3}{8}$ in.; 3A ($3\frac{1}{4} \times 5\frac{1}{2}$), $2\frac{3}{16} \times 4\frac{3}{4} \times 7\frac{1}{8}$ in.; 4×5 , $2\frac{1}{4} \times 4\frac{7}{8} \times 6\frac{1}{8}$ in.; 5×7 , $2\frac{5}{8} \times 6 \times 8\frac{3}{8}$ in. Weight, $3\frac{1}{4} \times 4\frac{1}{4}$, 30 ozs.; 3A ($3\frac{1}{4} \times 5\frac{1}{2}$), 37 ozs.; 4×5 , 33 ozs.; 5×7 , 56 ozs. Automatic Standard Clamp.



PRICES.

Filmplate Premo with Planatograph

	$3\frac{1}{4} \times 4\frac{1}{4}$	$3\frac{1}{4} \times 5\frac{1}{2}$	4×5	5×7
Lens, Kodak Auto. Shutter, Autotime Scale, Plate Holder and Film Pack Adapter - -	\$22.50	\$25.00	\$25.00	\$30.00
Carrying Case - - - -	1.75	2.25	2.25	3.00
Premo Film Pack - - - -	.70	.80	.90	1.60
Kodak Portrait Attachment - -	.50	.50	.50	.50

FILMPLATE PREMO SPECIAL



FOR those who want the highest possible efficiency in a hand camera, combined with compactness and convenience, the Filmplate Premo Special is truly the ideal camera.

It is thoroughly equipped to make good pictures under all conditions of amateur photography where good pictures could possibly be made, aside from ultra rapid focal plane photography.

It is fitted with every desirable mechanical convenience. It has a fast, fully corrected lens,—the Zeiss Kodak Anastigmat, *f*.6.3, specially designed for hand camera work, and a high speed shutter, the Compound, that works with great precision. This shutter attains a speed of 1/250 second in the $3\frac{1}{4} \times 4\frac{1}{4}$ size, 1/200 in the $3\frac{1}{4} \times 5\frac{1}{2}$ and 4×5 sizes and 1/150 second in the 5×7 size.

This equipment cannot be surpassed. It not only provides a very high speed for rapidly moving objects, but it enables the operator to make pictures on dark days, indoors, and under generally unfavorable light conditions, where absolute failure would result from the use of the ordinarily equipped camera.

FILMPLATE PREMO SPECIAL

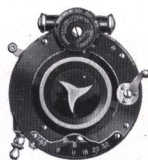
These advantages are offered in a camera that takes films or plates with equal facility, and is as compact and easy to carry, as convenient to operate, as the average hand camera for films only. In addition this camera is provided with a ground glass which may be used for sharp focusing and accurate composing between each exposure, and this can be done with equal ease whether films or plates are used. This is an advantage which will appeal strongly to many, as it enables one to utilize to the fullest extent the microscopic definition of his anastigmat lens.

In keeping with the high grade of work for which this camera is designed, we have constructed and finished it in the best possible manner. The covering is a rich black morocco, the bellows black leather, and metal parts are handsomely nickeled, producing a most attractive combination.

Particular attention is called to the 3A size for its all-around popularity, and to the 5 x 7 for its unusual compactness for a 5 x 7 camera of its great capabilities.

SPECIFICATIONS.

Capacity, 12 film or 2 plate exposures. Box, seasoned wood. Bed, aluminum. Rack and pinion for fine focusing. Front, rising and sliding. Finder, brilliant, reversible, collapsible. Tripod Sockets, two. Lens, Zeiss Kodak Anastigmat *f*.6.3. Shutter, compound. Dimensions, $3\frac{1}{4} \times 4\frac{1}{4}$, $2\frac{1}{4} \times 4\frac{1}{8} \times 5\frac{3}{8}$ in.; $3\frac{1}{4} \times 5\frac{1}{2}$, $2\frac{1}{8} \times 4\frac{11}{16} \times 7\frac{1}{8}$ in.; 4×5 , $2\frac{1}{4} \times 4\frac{7}{8} \times 6\frac{1}{8}$ in.; 5×7 , $2\frac{3}{8} \times 6 \times 8\frac{3}{8}$ in. Weight, $3\frac{1}{4} \times 4\frac{1}{4}$, 26 ozs.; $3\frac{1}{4} \times 5\frac{1}{2}$, 36 ozs.; 4×5 , 28 $\frac{1}{2}$ ozs.; 5×7 , 48 ozs.

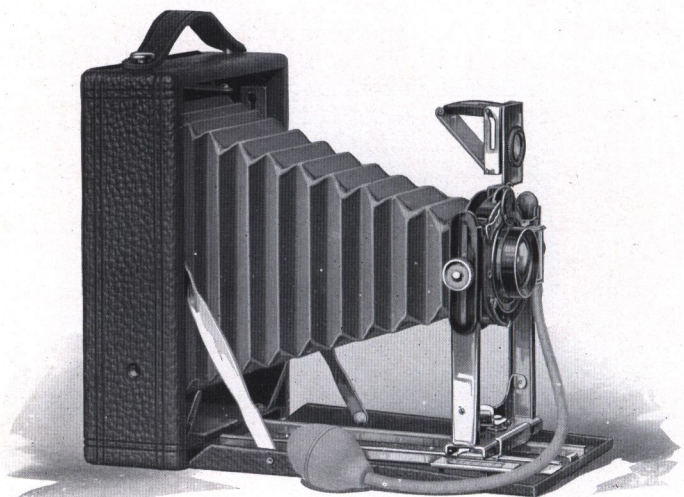


PRICES.

Filmplate Premo Special with Zeiss

	3A	3A	4 x 5	5 x 7
Kodak Anastigmat <i>f</i> .6.3 and Compound Shutter, Film Pack	$3\frac{1}{4} \times 4\frac{1}{4}$	$3\frac{1}{4} \times 5\frac{1}{2}$		
Adapter and Plate Holder -	\$50.00	\$60.00	\$60.00	\$80.00
Ditto, Cooke, Ser. III A, <i>f</i> .6.5 Lens	61.00	67.50	67.50	90.00
Ditto, B. & L. Zeiss Tessar Ser. II B, <i>f</i> .6.3 Lens	60.00	71.00	71.00	90.00
Case, Velvet Lined -	2.75	3.00	3.00	4.00
Kodak Autotime Scale -	1.50	1.50	1.50	1.50
Premo Film Pack -	.70	.80	.90	1.60

P R E M O N U M B E R 8



IN the plate camera field Premos have always been pre-eminent in quality and dependability from the very beginning of amateur photography. They have been manufactured for over thirty years, upon the idea of giving the customer the very best possible values for money expended.

The Premo No. 8 is an excellent illustration of the application of this idea. Designed for the amateur who wants a convenient, dependable plate camera at a moderate price, it is so carefully made and so simple to operate that it will produce remarkably good results for so inexpensive a camera.

It is equipped with our regular Planatograph lens, each one carefully tested, and the shutter is of the Kodak Ball Bearing type but supplied with bulb and tube instead of cable release. This shutter is graduated for speeds of $1/25$, $1/50$ and $1/100$ seconds, and works also, of course, for bulb and time exposures. The leaves operate on ball bearings and open in the shape of a star, admitting the greatest possible amount of light for any given exposure.

P R E M O N U M B E R 8

With this equipment the camera is suitable for general amateur work of all kinds—snap shots, landscapes and portraiture, especially in connection with the Kodak Portrait Attachment.

It is made of seasoned wood, with front bed of aluminum and metal runways, making an instrument of unusual compactness for a plate camera.

The bed and box of the Premo No. 8 are covered with black leather, the bellows is black and the metal parts being finished in nickel, give the camera a neat, attractive appearance.

The standard is made of metal and is very rigid, a rising and falling front is supplied and the finder is of the new Premo collapsible type.

This model, of course, is provided with a ground glass for sharp focusing, and while it is intended primarily for plates, it can be loaded with films just as easily. By the use of a Premo Film Pack Adapter it can be converted into a compact, daylight loading film camera, perfectly suitable for the vacationist or for any occasion where the light weight and greater convenience of films would be desirable. It is really one camera which offers the advantage of two.

SPECIFICATIONS.

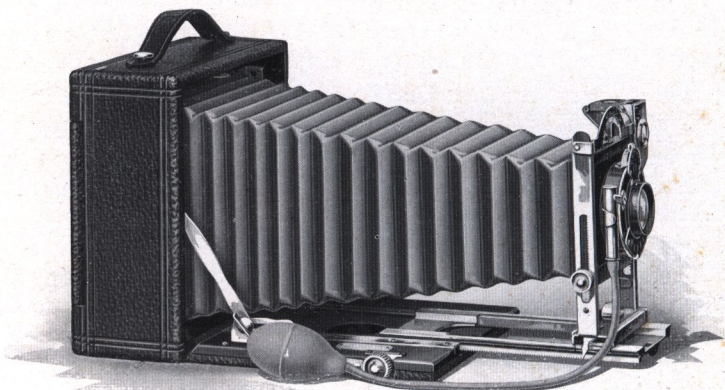
Capacity, 12 film or 2 plate exposures. Box, kiln-dried wood, covered with leather. Standard, made of metal, with rising and falling front. Carrying Case, imitation leather, with compartments for holders. Finder, reversible brilliant, collapsible. Tripod Sockets, two. Lens, Planatograph. Shutter, Kodak Ball Bearing with bulb and tube (see page 6). Dimensions, $3\frac{1}{4} \times 5\frac{1}{2}$, $2 \times 5 \times 7\frac{1}{4}$ in.; 4×5 , $2 \times 5\frac{1}{4} \times 6\frac{1}{2}$ in.; 5×7 , $2\frac{1}{4} \times 6\frac{1}{2} \times 8\frac{1}{2}$ in. Weight, $3\frac{1}{4} \times 5\frac{1}{2}$, 34 ozs.; 4×5 , 30 ozs.; 5×7 , 42 ozs.



PRICES.

Premo No. 8, with Planatograph Lens, Kodak Ball Bearing Shutter, Carrying Case and Plate Holder	4 x 5	3A $3\frac{1}{4} \times 5\frac{1}{2}$	5 x 7
- - - - -	\$12.00	\$14.00	\$18.00
Kodak Autotime Scale - - - - -	1.00	1.00	1.00
Premo Film Pack Adapter - - - - -	1.50	1.50	2.50
Premo Film Pack (12 exposures) - - - - -	.90	.80	1.60
Kodak Portrait Attachment - - - - -	.50	.50	.50

P R E M O N U M B E R 9



THIS efficient camera is designed for the amateur who wishes an instrument of very wide scope. With its complete equipment and accurate, convenient mechanical adjustments, it is a camera never before approached at the price.

The Premo No. 9 is fitted with the new Premo reversible back. This is the simplest back to reverse ever offered, for with its patented spring lug construction, it may be instantly removed and reversed without any tendency to stick or bind.

The bellows is of black leather and has sufficient draw to permit the use of the single lens combination or a telephoto attachment of several magnifications. The extension plate is actuated by rack and pinion working with exceptional smoothness and provided with a simple locking device.

The standard is constructed of metal, it is very rigid, and incorporates a rising and falling front of great latitude. This in connection with the swing bed construction makes it an easy matter to take pictures of tall buildings, and the like, without tipping the camera, with its attendant distortion. The lens board is removable and the finder is the new Premo collapsible brilliant.

The instrument is of the most substantial construction, it is covered with selected leather of beautiful grain and is finished

P R E M O N U M B E R 9

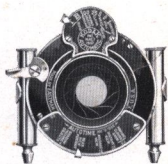
in the most careful manner. The covering is of black leather, specially selected for its beautiful grain, the bed is finished in black and the metal parts are heavily nicked.

The regular lens and shutter equipment comprises the Kodak Automatic shutter and Autotime scale and the Planatograph lens — a perfectly satisfactory equipment for everyday amateur photography. The single combination of the lens will produce sharp, clear pictures of objects at a distance double the size made with the complete lens.

Like the Premo No. 8, this model is primarily intended for plates, but it can be easily converted into a daylight loading film camera by use of the Premo Film Pack Adapter. It offers the advantage of ground glass focusing with either medium, but is fitted with a focusing scale for snap shot work or for any occasion when one does not care to use the ground glass.

SPECIFICATIONS.

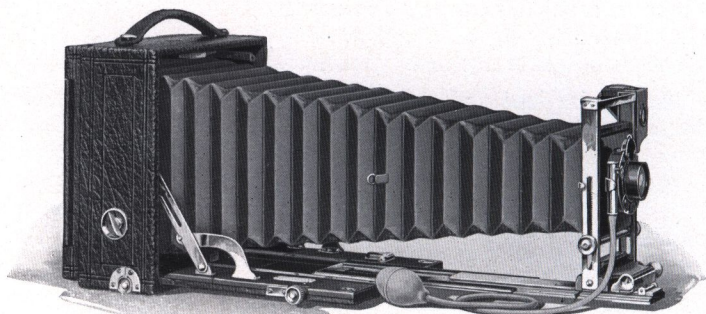
Capacity, 12 film or 2 plate exposures. Box, kiln-dried wood, covered with fine grain leather. Bed, hand polished wood, finished in black, and supplied with rack and pinion for fine focusing, and swing arrangement. Back, spring catch, reversible. Standard, made of metal, with rising and falling front. Finder, brilliant reversible, collapsible. Tripod Socket, one. Lens, Planatograph. Shutter, Kodak Automatic (see page 7). Carrying Case, sole leather, with compartments for holders. Bellows, black leather; draw $3\frac{1}{4} \times 5\frac{1}{2}$, 13 in.; 4×5 , 13 in.; 5×7 , $15\frac{1}{4}$ in. Dimensions, $3\frac{1}{4} \times 5\frac{1}{2}$, $3 \times 7 \times 7$ in.; 4×5 , $3 \times 7 \times 7$ in.; 5×7 , $2\frac{3}{4} \times 8\frac{1}{4} \times 8\frac{1}{4}$ in. Weight, $3\frac{1}{4} \times 5\frac{1}{2}$, 63 ozs.; 4×5 , 63 ozs.; 5×7 , 76 ozs.



PRICES.

Premo No. 9, with Planatograph Lens,		3A	
Kodak Automatic Shutter with Kodak	4 x 5	$3\frac{1}{4} \times 5\frac{1}{2}$	5 x 7
Autotime Scale, Case and Holder - -	\$28.00	\$28.00	\$33.00
Ditto, with Zeiss Kodak Anastigmat Lens			
f.6.3 and Compound Shutter - - -	62.50	62.50	81.50
Premo Film Pack Adapter - - - -	1.50	1.50	2.50
Premo Film Pack (12 exposures) - -	.90	.80	1.60
Kodak Portrait Attachment, - - - -	.50	.50	.50

P R E M O N U M B E R 10



DESIGNED to meet the requirements of the most advanced photographer and of the specialist in photographic work, the Premo No. 10 is equipped with every known adjustment desirable in a hand camera for making pictures under all conditions.

The bellows is of such length as to readily accommodate the single combinations of any lens system, and also to meet the capacity requirements of telephoto lenses of the highest magnifications. This feature is also a valuable one in the processes of enlarging, copying and portraiture.

Provision is made for the use of lenses of the widest angle. For this purpose, it is necessary only to unclasp the two supplementary side arms, which drop the beds down on a hinge, removing it from the path of the shortest focus lens. Then a short supplementary bed, carried conveniently at the top of the camera when not in use, is substituted for the regular bed, affording easy focusing facilities.

The movable extensions are constructed entirely of metal, are actuated by a single pinion and attached to the wooden bed by metal angle pieces, making the operation impervious to changing atmospheric conditions. The swing back is actuated by rack and pinion, with locking device, as is also the rising and falling front. The standard clamp is automatic.

The camera is regularly fitted with the Planatograph lens—the best obtainable aside from the anastigmats, but it is con-

P R E M O N U M B E R 1 0

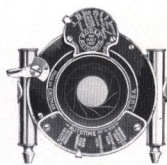
structed with the view of accommodating anastigmat lenses of any kind when desired. The regular shutter is the reliable Kodak Automatic fitted with Kodak Autotime Scale. This scale automatically indicates the proper time and stop opening for all outdoor exposures. (See page 7).

The finish and general workmanship of the instrument must be seen to be appreciated. The shutter and all metal parts are highly nicked and the covering is of the best leather, especially selected for its beautiful grain. The wood is mahogany with hand polished black finish. The carrying case is of sole leather, lined with purple velvet.

With all these advantages the Premo No. 10 can be successfully used even by the beginner. Its special features do not have to be reckoned with excepting when needed, and the Premo adapter will convert it at any time into a daylight loading film camera. The camera is made in the 5 x 7 size only.

S P E C I F I C A T I O N S .

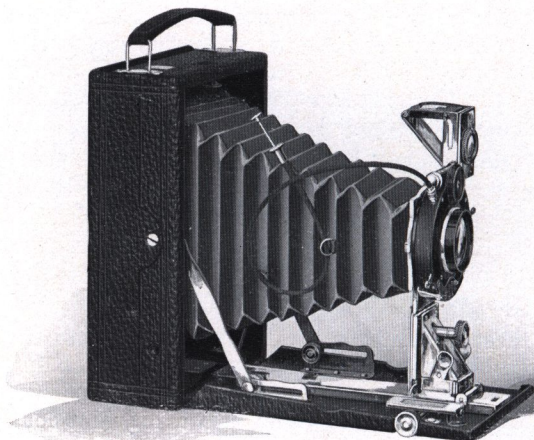
Capacity, 12 film or 2 plate exposures. Box, mahogany, leather covered. Bed, mahogany, with highly polished black finish and with triple extension runway. Back, spring catch, reversible. Swing, vertical; rack and pinion actuated, with locking device. Front, rising and falling; rack and pinion actuated, with locking device. Lens Board, removable; size $3\frac{1}{2} \times 3\frac{1}{2}$ in. Finder, Brilliant, reversible. Tripod Sockets, two. Lens, Planatograph. Shutter, Kodak Automatic with Autotime Scale (see page 7). Carrying Case, sole leather, plush lined, with compartment for holders. Bellows, black leather; draw, 19 in. Dimensions, $4 \times 8\frac{1}{2} \times 8\frac{1}{2}$ in. Weight, 5×7 , $5\frac{1}{2}$ lbs. Automatic Standard Clamp.



P R I C E S .

Premo No. 10, with Planatograph Lens and Kodak Auto. Shutter with Autotime Scale, Carrying Case and Plate Holder	5 x 7
With Zeiss Kodak Anastigmat Lens f.6.3 and Compound Shutter	\$ 60.00
With B. & L.-Zeiss Protar VIIa Lens and Compound Shutter	109.00
Premo Film Pack Adapter	141.00
Premo Film Pack	2.50
Kodak Autotime Scale for Compound Shutter	1.60
	1.50

S I X - T H R E E P R E M O S



THE Six-Three Premos are designed to supply absolutely reliable cameras with every anastigmat advantage, at the very minimum of expense.

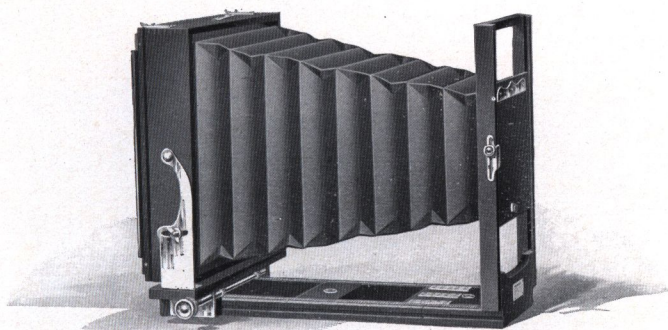
Taking as a basis the regular Premo models suitable for this purpose, we have simply replaced the R. R. lens and automatic shutter with the Compound shutter and a new anastigmat lens, called the Cooke Kodak Anastigmat. This lens has been specially designed for this particular use by the makers of the well-known Cooke Anastigmat lenses. It is an anastigmat of the very first quality, fully corrected for definition and flatness of field, and working at a speed of *f*.6.3. The shutter is the regular Compound, but operated with cable release instead of bulb and tube. For details merely refer to detailed specifications of the regular models. The illustration shows the Six-Three Filmplate Premo.

PRICES.

Six-Three Premoette Jr. No. 1A, Cooke Kodak Anastigmat Lens	
<i>f</i> .6.3, and Compound Shutter	\$34.00
Six-Three Filmplate Premo, $3\frac{1}{4} \times 4\frac{1}{4}$, equipped as above	41.00
Ditto, 3A ($3\frac{1}{4} \times 5\frac{1}{2}$) or 4×5	48.00
Six-Three Premo No. 9, 3A ($3\frac{1}{4} \times 5\frac{1}{2}$) or 4×5 , equipped as above	51.00

For prices on carrying cases, films, etc., see price list of corresponding regular models.

T H E R . O . C . V I E W



AN inexpensive, reliable view camera for those who do not require extra long bellows capacity. It is especially adapted for interior work as it focuses from the rear only, and the back may be moved as close to the front as desired so that extreme wide angle lenses may be used.

The front board is so wide that stereoscopic lenses may be used, and the standard is strong and rigid, affording a safe support for the heaviest lenses.

The back is supplied with horizontal and vertical cut out boards, so that four pictures may be made on one plate if desired. Vertical and horizontal swings, rising and falling front and reversible back are provided. The camera is strongly built for service and will last indefinitely.

SPECIFICATIONS.

Bellows Draw, 5 x 7, 14 in.; 6½ x 8½, 15½ in.; 8 x 10, 17 in. Weight, 5 x 7, 4¾ lbs.; 6½ x 8½, 6 lbs.; 8 x 10, 6¾ lbs. Size of Lens Board, 5 x 7, 3¾ x 6¾ in.; 6½ x 8½, 4½ x 6½ in.; 8 x 10, 5 x 6 in. Carrying Case, square style canvas.

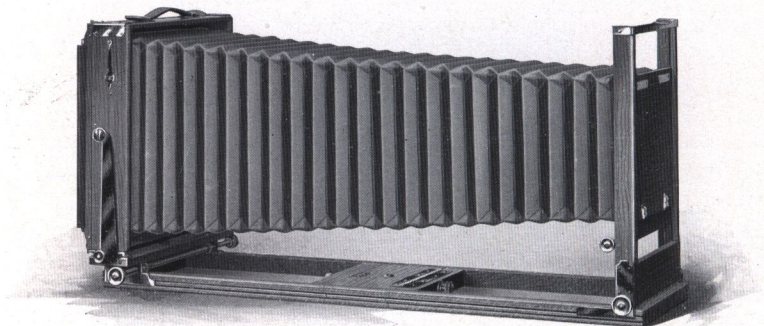
PRICES.

	5 x 7	6½ x 8½	8 x 10
R. O. C. View with Case and Holder - - -	\$12.00	\$13.00	\$14.00
R. O. C. View Complete Outfit* - - -	27.00	35.00	42.00
Extra Carrying Case, Regular - - -	1.75	2.00	2.25

*R. O. C. Complete Outfit includes: R. O. C. View Camera, Symmetrical Lens and D. V. Auto Shutter, six Plate Holders, Combination Tripod, R. O. C. Focusing Cloth, and Carrying Case holding complete outfit.

EASTMAN VIEW No. 1

IMPROVED
MODEL OF EMPIRE STATE



FOR years there has been no radical change in View Cameras. The Empire State camera had seemed to meet all requirements, and it certainly gave good value and satisfaction.

However we started an investigation of the View Camera situation some time ago, and it was found that improvements could be made, and by the perfection of our factory organization and the running through of large lots, a camera fully equal to the old Empire State, from the standpoint of service and efficiency, could be supplied at a material reduction in price.

As a result we now offer the Eastman View No. 1, an Improved Model of Empire State, and anyone who is in the market for a substantial, reliable view camera at low cost, will find this of exceptional value for the money.

The appearance of this camera is quite novel. It is finished in mission style with metal parts oxidized, and black bellows.

It has no complications, but is built for practical service, and its various adjustments are such as to work conveniently and easily.

It has double extensions and both front and back are actuated by rack and pinion, so that the camera may be focused from either end, and the back can be racked up as close to the front as desired. This provides for the use of lenses of the widest angle.

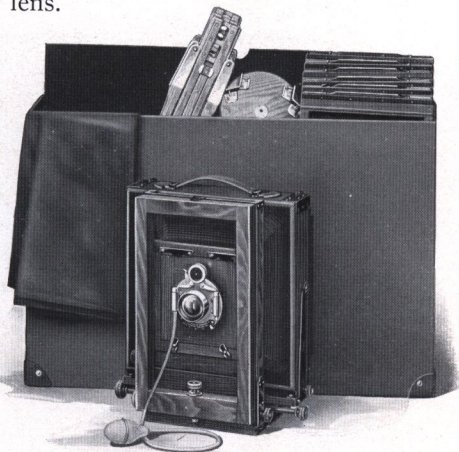
EASTMAN VIEW No. 1

The camera has rising and falling front, actuated by rack and pinion, and this can be locked solidly at any point by merely pushing in the pinion. The front board is removable and is large enough to accommodate any lens.

Both horizontal and vertical swings are provided, and the back is reversible and furnished with a vertical cut-off board, so that two negatives may be made on one plate, if desired.

A strap handle and plumb level are supplied and an automatic bellows support which prevents sagging of the bellows at any time.

Particular attention is called to the Eastman View No. 1 Complete Outfits. Never before has so much real view camera efficiency been offered for so small an outlay.



SPECIFICATIONS.

Bellows Draw, 5 x 7, 22½ in.; 6½ x 8½, 26 in.; 8 x 10, 29 in. Weight, 5 x 7, 6 lbs.; 6½ x 8½, 8 lbs.; 8 x 10, 9½ lbs. Size of Lens Board, 5 x 7, 4¼ x 4¼ in.; 6½ x 8½, 4¼ x 4¾ in.; 8 x 10, 4¾ x 4¾ in. Carrying Case, long style canvas, combination style, with compartment for camera, holders and tripod.

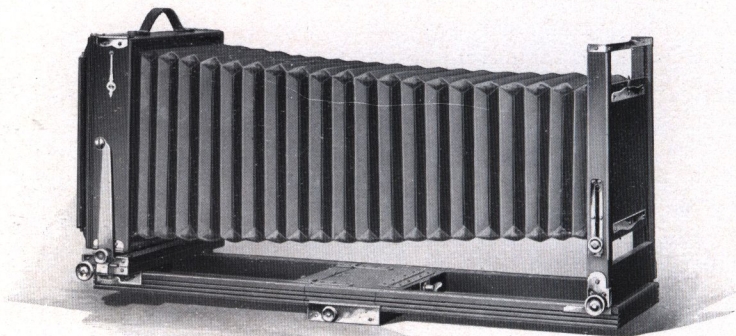
PRICES.

	5 x 7	6½ x 8½	8 x 10
Eastman View No. 1 (improved model of Empire State) with Case and Holder -	\$19.00	\$21.00	\$23.00
Eastman View No. 1 Complete Outfit* - -	34.00	43.00	51.00
Complete Outfit as above, but with Rapid Rectigraphic instead of Symmetrical Lens -	45.00	55.00	65.00
Extra Carrying Case - - - - -	3.50	3.75	4.00
Extra Lens Boards - - - - -	.30	.40	.50

*Eastman View No. 1 Complete Outfit includes: Eastman View No. 1 Camera, Symmetrical Lens, Double Valve Auto Shutter, six Plate Holders, Combination Tripod, R. O. C. Focusing Cloth, and Case to hold complete outfit.

EASTMAN VIEW No. 2

IMPROVED
MODEL OF EMPIRE STATE



ALL our experience in view camera making, all the information that we have been able to collect, of the needs of the view camera worker, have been put into the proposition of providing in this new model a view camera as near to perfection as human ingenuity can devise.

It has all the good points of the famous old Empire State, with important additional features which leave nothing to be desired in view camera work, however exacting it may be.

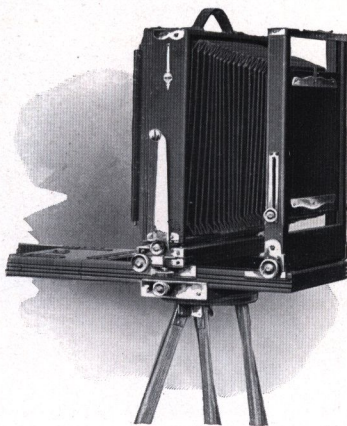
The camera is constructed with the idea of providing the greatest possible solidity and strength throughout. The extensions are extra thick, the standard is very large and will furnish an absolutely rigid support for the heaviest lenses. Corners are dovetailed and reinforced by brass angle pieces, and the metal parts are all made of the best quality of brass, fully lacquered.

The front board is removable and very large. The rising and falling front is actuated by rack and pinion, as are both the horizontal and vertical swings. The camera can be focused from both front and rear by rack and pinion, so that the back can be racked up as close to the front as desired. Thus lenses of the widest angle can be used. A sliding tripod block is provided so that the camera can always be supported directly above the tripod or the weight distributed, as the operator may wish.

EASTMAN VIEW No. 2

The back is reversible, a plumb level and strap handle are supplied and both horizontal and vertical cut-off boards are furnished so that four different negatives can be made on one plate if desired. The bellows of this camera is made of genuine leather and a spring arrangement working automatically prevents it from sagging at any time.

The method of locking extensions is very convenient, not by means of the old-fashioned, long threaded screw, but by a specially constructed device which locks firmly by merely being pushed in and given a quarter turn. The back extension, which is detachable, in addition to this device is further strengthened by two clamp catches which hold it absolutely rigid.



The camera is made of hand-polished mahogany, with exception of the extensions, which are of cherry on account of its greater strength.

SPECIFICATIONS.

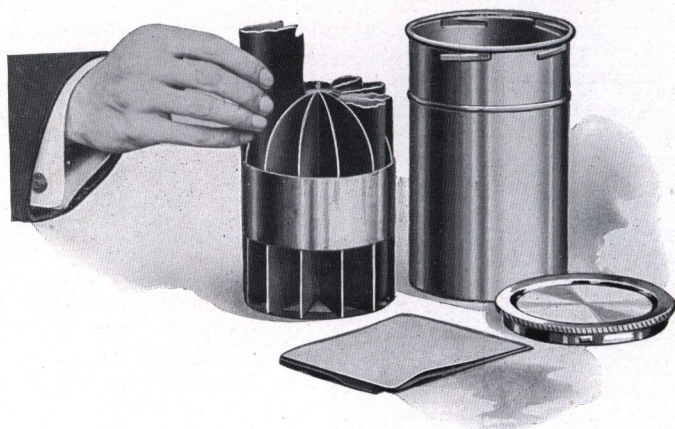
Bellows Draw, 5 x 7, 23 in.; 6½ x 8½, 26½ in.; 8 x 10, 29½ in. Weight, 5 x 7, 7 lbs.; 6½ x 8½, 10½ lbs.; 8 x 10, 11¼ lbs. Size of Lens Board, 5 x 7, 4½ x 4½ in.; 6½ x 8½, 6 x 6 in.; 8 x 10, 6 x 6 in. Carrying Case, canvas, combination style, with compartments for camera, holders and tripod. All operating nuts on the right side, binding nuts on the left hand side.

PRICES.

	5 x 7	6½ x 8½	8 x 10
Eastman View No. 2 (improved model of Empire State) with Case and Holder -	\$25.00	\$28.00	\$30.00
Eastman View No. 2 Complete Outfit* -	40.00	50.00	58.00
Complete Outfit as above, but with Rapid Rectigraphic instead of Symmetrical Lens -	51.00	62.00	72.00
Extra Carrying Case - - - - -	4.00	4.50	5.00
Extra Lens Boards - - - - -	.60	.75	.75

*Eastman View No. 2 Complete Outfit includes: Eastman View No. 2 Camera, Symmetrical Lens, Double Valve Auto Shutter, six Plate Holders, Combination Tripod, R. O. C. Focusing Cloth, and Case to hold complete outfit. See illustration similar outfit page 31.

P R E M O F I L M P A C K T A N K



THOSE who use the Premo Film Pack need never give a thought to development, for if they will use the Premo Film Pack Tank, they can absolutely know that every pack they expose is certain to be perfectly developed, provided they follow the simple directions for use of the tank. This means that the merest beginner, without any need of skill or help, can get as good results in development as the most expert photographer.

For the tank is simplicity itself. It requires no experience, no lengthy manipulation in a close dark-room. And we recommend the tank system to the most careful workers as being infinitely simpler than the older method and producing results superior to those which can be obtained by the most painstaking tray development.

The Premo Film Pack Tank consists of two pieces—a metal receiver or cage for the films, and a tank with cover for the developing fluid. The entire outfit is self-contained and can be easily carried in a corner of a suitcase.

The cage is divided into twelve compartments—in the 5 x 7 size, six—each accommodating one film. As the film is taken from the pack it is held between the thumb and fingers, slightly

P R E M O F I L M P A C K T A N K

bent from top to bottom, and slipped into its respective compartment. When all the compartments are filled, the cage is placed in tank, which has been previously filled with developer, the top replaced and the films left to develop for a certain specified time. No further attention is necessary except to turn the tank end for end, several times during the progress of development.

At the expiration of the full time, open the tank, take out the cage, remove films, place them in a tray of water for a moment, then transfer to the fixing bath. Development is completed. Rinse out cage and tank and set them aside.

The operation of removing films from the pack and loading the cage is done, of course, in a darkened room by the light of a ruby lamp. During the day any darkened closet will suffice, at night any dark room in which the shades are drawn will answer. To load the films in cage will take only two or three minutes, and as soon as the top is placed on tank it may be brought out into any light and left until development is completed. And night is really an ideal time to develop films, as they can be fixed and washed in a short time and will dry over night, being all ready to print from in the morning.

If it is desired to develop less than a dozen films, one merely removes from his pack as many films as have been exposed, places them in the cage, and proceeds in the same manner as described above.

The cage of the No. 1 Tank is slightly different from that shown in the illustration, but the method of loading is the same and, of course, the results are just as dependable.

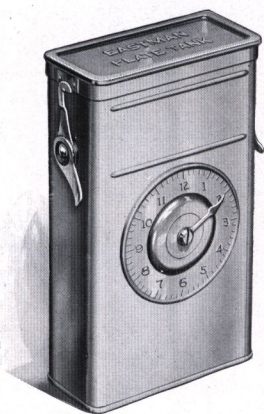
P R I C E S .

Premo Film Pack Tank No. 1, for 12 $1\frac{3}{4} \times 2\frac{3}{8}$ or $2\frac{1}{4} \times 3\frac{1}{4}$ films	-	\$1.25
Do., No. 2 for 12 $2\frac{1}{2} \times 4\frac{1}{4}$, $3\frac{1}{4} \times 4\frac{1}{4}$, $3 \times 5\frac{1}{4}$, $3\frac{1}{4} \times 5\frac{1}{2}$ or 4 x 5 films	-	3.50
Do., No. 3, for 6 5×7 films	-	4.00
Premo Tank Developing Powders, in packages of 6, No. 1	-	.20
Premo Tank Developing Powders, in packages of 6, No. 2	-	.25
Premo Tank Developing Powders, in packages of 6, No. 3	-	.35
Kodak Acid Fixing Powder, per 1 pound package	-	.25
Do., per $\frac{1}{2}$ pound package	-	.15
Do., per $\frac{1}{4}$ pound package	-	.10

EASTMAN PLATE TANK

IN the Eastman Plate Tank, plates may be developed in the same manner and with the same assurance of excellent results as may films developed in the Premo Film Pack Tank. The theory of construction is precisely the same, with of course such

differences as are necessary because of the physical differences between films and plates.



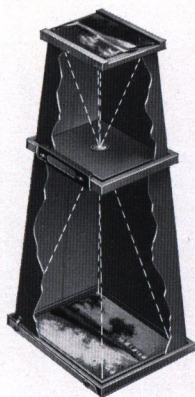
It consists of a metal solution cup, a cage for holding twelve (or less) plates and a loading fixture for loading plates into the cage. In the $3\frac{1}{4} \times 4\frac{1}{4}$, $3\frac{1}{4} \times 5\frac{1}{2}$ and 4×5 sizes, the cage of plates may be developed in a Premo Film Pack Tank, so that one using a Premo that takes films or plates and having a Premo Film Pack Tank needs only to purchase the cage and loading fixture of the plate tank for the development of his plates, an advantage in economy. It is thus apparent that

the owner of a Premo plate camera can not only use films or plates in his camera with equal facility, but he can also avail himself of the advantages of tank development with either medium.

PRICES.

Eastman Plate Tank for 4×5 , $3\frac{1}{4} \times 5\frac{1}{2}$ or smaller plates, includes Solution Cup, Plate Cage, Loading Fixture and Adjustable Kit	\$ 3.50
Do., 5×7 , without Kit	4.50
Do., 8×10 , with Adjustable Kit	10.00
Adjustable Kit for 4×5 or $3\frac{1}{4} \times 5\frac{1}{2}$ Tank, to take smaller plates	.50
Kits for 5×7 Tank, to take $3\frac{1}{4} \times 5\frac{1}{2}$, $4\frac{1}{4} \times 6\frac{1}{2}$ or $4\frac{3}{4} \times 6\frac{1}{2}$ plates, each,	.75
Extra Adjustable Kit for 8×10 Plate Tank	1.00
Plate Cage and Loading Fixture for 4×5 and $3\frac{1}{4} \times 5\frac{1}{2}$ plates (can be used in a 4×5 Premo Film Pack Tank)	1.10
Eastman Plate Tank Powders, for 4×5 Tank, per package $\frac{1}{2}$ doz.	..20
Do., for 5×7 Tank, per package, $\frac{1}{2}$ dozen	.35
Do., for 8×10 Tank, per package, $\frac{1}{2}$ dozen	.50
Kodak Acid Fixing Powder, per 1-pound package	.25

BROWNIE ENLARGING CAMERA



Those who use Premo Cameras up to and including the 4 x 5 size will find that with one of these cameras it's just as easy to make first-class enlargements as it is to print on Velox paper. In fact, the two processes are very much the same excepting that, in ordinary printing, the negative and paper are in contact, while in enlarging, the paper is at some distance from the negative, with a lens in between. The Improved Brownie Enlarging Camera consists of a light-tight cone with attachments to hold a negative at the small end, and a sheet of Bromide or Velox paper at the other. They are collapsible and made in two sections the lens support holding them firmly together when in use.

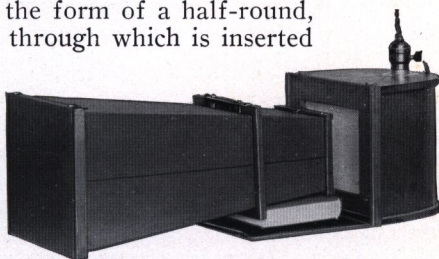
No. 2 Brownie Enlarging Camera, for 5 x 7 enlargements from 2¼ x 3¼ negatives	- - - - -	\$2.00
No. 3 Ditto, for 6½ x 8½ enlargements from 3¼ x 4¼ negatives	- - - - -	3.00
No. 4 Ditto, for 8 x 10 enlargements from 4 x 5 negatives (will also take 3¼ x 5½ negatives)	- - - - -	4.00

BROWNIE ILLUMINATOR

A very convenient device, providing a strong, even light by which to print with the Brownie Enlarging Camera. It is collapsible, but when set up, has the form of a half-round, light-proof box with socket through which is inserted an electric light bulb.

The inner walls of this box are white and act as a reflector when the light is turned on. At the end is a ground glass, which diffuses the light, so that by placing

negative end of the enlarging camera in contact with this glass and turning on the electricity, an excellent steady printing light is obtained.



Brownie Enlarging Camera Illuminator	- - - - -	\$3.00
--------------------------------------	-----------	--------

P R E M O L E N S E S

FOR those who wish lenses in barrel for view cameras or other use, we list below several desirable types. Prices on any others will be supplied on demand.

ZEISS KODAK ANASTIGMAT LENS *f*6.3

No.	Size of Plate Covered with Full Aperture.						Equivalent Focus.	Price.
1	-	-	-	-	-	-	2½ x 4¼	4½ inches \$18.50
2	-	-	-	-	-	-	3¼ x 4¼	5 inches 19.00
3	-	-	-	-	-	-	4 x 5	6⅞ inches 23.25
4	-	-	-	-	-	-	4 x 5	6⅞ inches 26.25
5	-	-	-	-	-	-	5 x 7	8¼ inches 34.50
6	-	-	-	-	-	-	6½ x 8½	10 inches 46.50

B. & L.-ZEISS PROTAR LENS—SERIES VII A

No.	Size of Plate Covered with Full Aperture.	Focus of Front Lens.	Focus of Back Lens.	Combined Focus.	Speed.	Price.
2	3¼ x 4¼	8¼ in.	7 3/16 in.	4½ in.	<i>f</i> :7	\$ 45.50
3	4 x 5	11 3/16 in.	7 3/16 in.	5 in.	<i>f</i> :7-7	50.00
5	4¼ x 6½	11 3/16 in.	8¾ in.	5⅝ in.	<i>f</i> :7	53.00
8	5 x 7	13¾ in.	11 3/16 in.	7 in.	<i>f</i> :7	63.50
9	5 x 8	16⅞ in.	11 3/16 in.	7½ in.	<i>f</i> :7-7	74.00
11	6½ x 8½	16⅞ in.	13¾ in.	8½ in.	<i>f</i> :7	80.00
12	6½ x 8½	18⅞ in.	13¾ in.	9⅞ in.	<i>f</i> :7-7	98.50
17	8 x 10	23⅞ in.	18⅞ in.	11⅞ in.	<i>f</i> :7	145.50

B. & L.-ZEISS PROTAR LENS—SERIES V, *f*:18

The B. & L.-Zeiss Protar, Series V, is designed for extreme wide-angle work. This lens embraces a field of 110 degrees.

No.	Size.						Equivalent Focus.	Price.
1	-	-	-	-	-	-	4¼ x 6½	3⅝ inches \$20.00
2	-	-	-	-	-	-	5 x 7	4 7/16 inches 20.00
3	-	-	-	-	-	-	6½ x 8½	5 9/16 inches 25.00
4	-	-	-	-	-	-	8 x 10	7 3/16 inches 31.00

SYMMETRICAL WIDE-ANGLE LENS

This is an excellent wide-angle lens at a moderate price, having an angle of about 80 degrees. It is furnished in cells to interchange with the various lenses supplied on Premo Cameras.

No.	Size.						Equivalent Focus.	Price in Cells Only
1	-	-	-	-	-	-	4 x 5	3½ inches \$ 5.00
2	-	-	-	-	-	-	5 x 7	5 inches 7.50
3	-	-	-	-	-	-	6½ x 8½	6½ inches 12.00
4	-	-	-	-	-	-	8 x 10	8 inches 15.00

PREMO ACCESSORIES

THE KODAK PORTRAIT ATTACHMENT

This attachment simply fits on in front of the regular lens and in no way affects the operation of the camera, excepting to so change the focus as to permit working close to the subject, thereby giving good sized head and shoulder portraits. Not supplied for cameras larger than 5 x 7. Please order by number.

- No. 0. For Premo Jrs. No. 1 and No. 1A - - - \$.50
- No. 3. For $3\frac{1}{4} \times 4\frac{1}{4}$ Film Premo No. 1; $3\frac{1}{4} \times 4\frac{1}{4}$ Pocket Premo C; Premoette Jr. No. 1A, both single and double lens; Premo Jrs. Nos. 3 and 4 - - - .50



Made with Filmplate Premo and Kodak Portrait Attachment (Reduced)



- No. 5. For all 4 x 5, 3A and 5 x 7 Premos Nos. 8, 9 and 10; all sizes of Filmplate Premos; 3A Pocket Premo C; 3A and 4 x 5 Film Premo No. 1 - - - \$.50
- No. 6. For Premoette Jr. No. 1A Special .50
- No. 7. For 3A Filmplate Premo Special - .50
- No. 8. For Premoette Jr. No. 1, with both single and double lens - - - .50

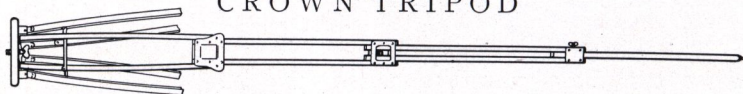
KODAK COLOR SCREENS

These are mounted in the same manner as the Kodak Portrait Attachment. Please order by number.

- No. 0. For Premo Jrs. Nos. 1 and 1A - - - \$.50
- No. 3. For $3\frac{1}{4} \times 4\frac{1}{4}$ Film Premo No. 1; $3\frac{1}{4} \times 4\frac{1}{4}$ Pocket Premo C; Premoette Jr. No. 1A, both single and double lens; Premo Jrs. Nos. 3 and 4 - - - .75
- No. 5. For all 4 x 5, 3A and 5 x 7 Premos Nos. 8, 9 and 10; all sizes of Filmplate Premos; 3A Pocket C; 3A and 4 x 5 Film Premo No. 1 - - - 1.00
- No. 6. For Premoette Jr. No. 1A Special - - - .75
- No. 7. For 3A Filmplate Premo Special - - - 1.00
- No. 8. For Premoette Jr. No. 1, with both single and double lens .50

P R E M O T R I P O D S

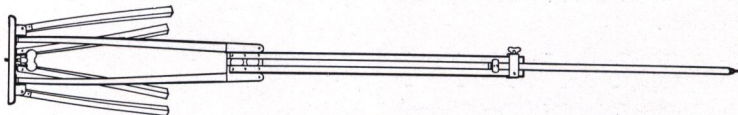
CROWN TRIPOD



Made in four sections. Very rigid.

Style.	Folded.	Extended.	Weight.	Price.
No. 1	- - 16¼ inches	- - 4¼ feet	- - 36 ozs.	- - \$5.50
No. 2	- - 17¼ inches	- - 4¾ feet	- - 65 ozs.	- - 6.00
No. 3	- - 20 inches	- - 5½ feet	- - 70 ozs.	- - 7.50

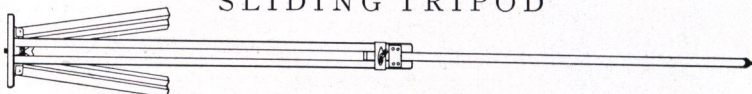
COMBINATION TRIPOD



This tripod is made on the sliding and folding principle. The wood parts are of ash and the finish is of the very best.

Style.	Size of Camera.	Weight.	Price.
No. 2½	- - 6½ x 8½ and smaller	- - 3 lbs.	- - \$3.00
No. 3	- - 8 x 10 and 10 x 12	- - 4 lbs.	- - 3.50
No. 4	- - 11 x 14 and 14 x 17	- - 5 lbs.	- - 4.50
No. 5	- - 17 x 20 and 20 x 24	- - 8 lbs.	- - 6.00

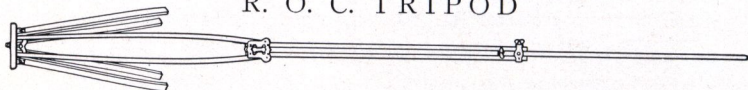
SLIDING TRIPOD



A perfectly rigid tripod for the heaviest cameras.

Style.	Size of Camera.	Weight.	Price.
No. 1	- - 5 x 7 and smaller	- - 2 lbs.	- - \$2.00
No. 2	- - 5 x 8 and 6½ x 8½	- - 2 lbs. 8 ozs.	- - 2.50
No. 3	- - 8 x 10 and 10 x 12	- - 4 lbs. 8 ozs.	- - 3.00
No. 4	- - 11 x 14 and 14 x 17	- - 6 lbs. 8 ozs.	- - 4.00

R. O. C. TRIPOD

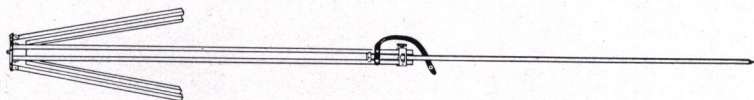


The R. O. C. Tripod is of the combination type and is for use with any camera up to and including the 5 x 7 size.

Weight, 32 ounces. Length, 22 to 57 inches Price, \$1.70

P R E M O T R I P O D S

FLEXO TRIPOD.



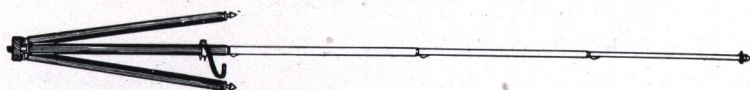
For cameras up to and including the 5 x 7 size this is a very satisfactory tripod at small expense.

Weight, 16 ounces

Length, 29 to 54 inches

Price, 90 cents

THE KODAK METAL TRIPOD



Combining light weight and compactness with exceptional rigidity, this is an ideal tripod for cameras up to 5 x 7.

Has telescoping legs of brass tubing—lower ones nickeled—the upper black enameled, and should a part become inoperative through wear or accident, any section may be removed for repairs. This is a unique feature among metal tripods.

When extended each section catches and holds firmly. To close, it is necessary to press in top catch only, the others then releasing automatically.

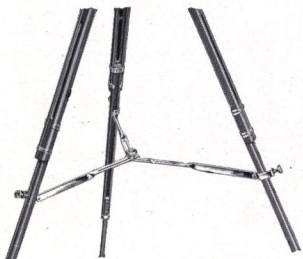
The Nos. 1 and 2 have revolving heads for attaching to camera. With this construction the camera may be swung, so as to take in the desired view without moving the tripod, a distinct advantage over other types of metal tripods.

The Nos. 1 and 2 also have straps for holding the legs in place when closed.

	Sections.	Closed.	Length Extended.	Weight.	Price.
Kodak Metal Tripod No. 0	- 3	15½ in.	39½ in.	15 ozs.	\$1.60
Kodak Metal Tripod No. 1	- 4	15 in.	48½ in.	24½ ozs.	2.50
Kodak Metal Tripod No. 2	- 5	13½ in.	49½ in.	25 ozs.	3.25
Leatherette Case for No. 0	- -	-	-	-	.75
Leather Carrying Case, for No. 0, 1 or 2	- -	-	-	-	1.50

P R E M O A C C E S S O R I E S

EASTMAN TRIPOD BRACE

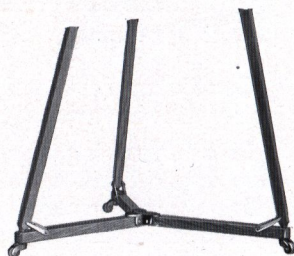


Out of doors, or indoors when the R. O. C. Tripod Truck is not used, this is an excellent attachment for holding tripod legs in position. Made entirely of metal, it can be instantly attached, and even when tripod is lifted the legs cannot collapse or change their position.

Eastman Tripod Brace - - - - - \$1.00

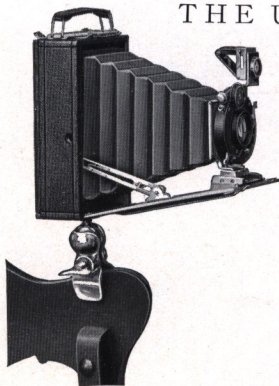
R. O. C. TRIPOD TRUCK

For flash-light work, home portraiture, in fact any branch of indoor photography, this truck is a very great convenience. It holds the tripod legs firmly in place and there is no danger of slipping nor of tripod spikes marring floors or rugs. Can be easily moved on its castors to any part of room, and folds up compactly when not in use.



No. 1, for average Tripods \$1.00; No. 2 for very heavy Tripods, \$1.25

THE UNIVERSAL CLAMP



The Universal Clamp is a small, convenient article which takes the place of a tripod, and which may be attached to any camera. It can be carried readily in the pocket, is very light, and may be attached to a chair, fence, the front board of an automobile, or other object which may be at hand. The clamp jaws are padded with felt.

Price - - - - - \$.75

P R E M O A C C E S S O R I E S

P R E M O P L A T E H O L D E R

Premo holders are made absolutely light tight by a fully patented light-lock. This device is shown in cut and is constructed of finely tempered, non-corrosive metal with independently operating spring fingers overlaid with a closely woven, specially prepared fabric. A slide can be inserted cornerwise without admitting light to the plate. Fitted with lacquered press-board slides that will not electrify, collect dust, crack or split.



$3\frac{1}{4} \times 4\frac{1}{4}$	- -	\$1.00	$3\frac{1}{4} \times 5\frac{1}{2}$	- -	\$1.00	4×5	- -	\$1.00
5×7	- -	\$1.25	$6\frac{1}{2} \times 8\frac{1}{2}$	- -	\$1.75			

E A S T M A N V I E W H O L D E R

These holders are made with bottom flap, avoiding all danger of plates falling out. They are strongly constructed, have patented spring finger light-lock, and made to fit both models of the Eastman View. Slides are of lacquered press-board.

5×7	- -	\$1.00	$6\frac{1}{2} \times 8\frac{1}{2}$	- -	\$1.10	8×10	- -	\$1.25
--------------	-----	--------	------------------------------------	-----	--------	---------------	-----	--------

U N I V E R S A L P L A T E H O L D E R

Constructed in the same manner as the Eastman View Holder but made to fit Empire State and Premo View Cameras.

5×7	- -	\$1.00	$6\frac{1}{2} \times 8\frac{1}{2}$	- -	\$1.10	8×10	- -	\$1.25
11×14	- -	\$4.00	14×17	- -	\$5.00			

R . O . C . P L A T E H O L D E R

This holder is of good construction and is adapted for use in the R. O. C. View Camera only. It has pressboard slides.

5×7	- -	\$1.00	$6\frac{1}{2} \times 8\frac{1}{2}$	- -	\$1.10	8×10	- -	\$1.25
--------------	-----	--------	------------------------------------	-----	--------	---------------	-----	--------

P L A T E H O L D E R A N D A D A P T E R S L I D E S

L A C Q U E R E D P R E S S B O A R D

$3\frac{1}{4} \times 4\frac{1}{4}$	- -	\$.20	$3\frac{1}{4} \times 5\frac{1}{2}$	- -	\$.20	4×5	- -	\$.20
5×7	- -	.25	$6\frac{1}{2} \times 8\frac{1}{2}$	- -	.30	8×10	- -	.40
11×14	- -	- -	- -	- -	- -	- -	- -	\$.60

H A R D R U B B E R .

5×7	- -	\$.35	$6\frac{1}{2} \times 8\frac{1}{2}$	- -	\$.50	8×10	- -	\$.65
--------------	-----	--------	------------------------------------	-----	--------	---------------	-----	--------

PREMO ACCESSORIES

PLATE HOLDER KITS

Size Outside.	Size of Opening for Plate.	Price.
4 x 5	3¼ x 4, 3¼ x 4¼	\$.20
5 x 7	3¼ x 4, 3¼ x 4¼, 3¼ x 5½, 4 x 5, 4¼ x 6½	.25
6½ x 8½	3¼ x 4¼, 4 x 5, 3¼ x 5½, 4¼ x 6½, 4¾ x 6½, 5 x 7	.30
8 x 10	4¼ x 6½, 4¾ x 6½, 5 x 7, 6½ x 8½	.40
11 x 14	6½ x 8½, 8 x 10, 10 x 12	.50
14 x 17	10 x 12, 11 x 14	.80

PREMO FILM PACK ADAPTERS

Adapters are regularly carried in stock for all Premo and Poco cameras up to and including the 5 x 7 size.

Size.	Price.	Size.	Price.
3¼ x 4¼	\$1.00	4 x 5	\$1.50
3 x 5¼	1.50	5 x 7	2.50
3A (3¼ x 5½)	1.50		

PREMO FILM PACKS

Twelve exposures in each pack.

Size.	Price.	Size.	Price.	Size.	Price.
1¾ x 2¾	\$.25	3¼ x 4¼	\$.70	4 x 5	\$.90
2¼ x 3¼	.40	3 x 5¼	.75	5 x 7	1.60
2½ x 4¼	.50	3A (3¼ x 5½)	.80		

GLASS DRY PLATES.

Seed, Standard or Stanley.

Size.	Price per Dozen.	Size.	Price per Dozen.	Size.	Price per Dozen.
3¼ x 4¼	\$.45	4¼ x 6½	\$.90	6½ x 8½	\$1.65
3¼ x 5½	.65	5 x 7	1.10	8 x 10	2.40
4 x 5	.65	5 x 8	1.25		

VELOX PAPER

The very best developing paper for amateur use.

Size.	SINGLE WEIGHT.			DOUBLE WEIGHT.		
	Doz.	½ Gross.	Gross.	Doz.	½ Gross.	Gross.
2¼ x 3¼	\$.15	\$.60	\$1.00	\$.20	\$.75	\$1.25
2½ x 4¼	.15	.70	1.25	.20	.90	1.55
3¼ x 4¼	.15	.80	1.50	.20	1.00	1.90
3¼ x 5½	.15	.80	1.50	.20	1.00	1.90
4 x 5	.25	1.10	2.00	.30	1.40	2.50
5 x 7	.35	2.00	3.50	.45	2.50	4.40
Velox Post Cards				.20	1.10	2.00

P R E M O A C C E S S O R I E S

KODAK CANDLE LAMP

This lamp is well made, collapsible, of special tested ruby fabric, bound in metal frames.

Kodak Candle Lamp - - - - \$.25
Extra Candles for same, per dozen - - .30



KODAK DARK ROOM LAMP

The Kodak Dark Room Lamp is oil burning and is fitted with both orange and ruby glass.

No. 2 Kodak Dark Room Lamp - - - - \$1.00

DEVELOPING TRAYS

Bulls-Eye, $3\frac{1}{4} \times 4\frac{1}{4}$ - - - \$.12 Eastman Enameled, $4\frac{3}{8} \times 5\frac{3}{8}$.25
Bulls-Eye, 4×5 or 4×6 - - .15 Eastman Enameled, 4×6 .25
Bulls-Eye, 5×7 - - - .25 Eastman Enameled, $5\frac{1}{4} \times 7\frac{3}{8}$.50

DEVELOPING AND PRINTING OUTFITS

Eastman 3A Outfit includes every requisite for developing by the dark room method, printing and finishing twenty-four $3\frac{1}{4} \times 5\frac{1}{2}$ or smaller pictures.

1 Kodak Candle Lamp, 25c; 1 Printing Frame, 25c; 1 Glass for Frame, 5c.; 1 4-ounce Graduate, 15c.; 1 Stirring Rod, 5c. 4 Developing Trays, 40c.; 5 Tubes Eastman's Special Developer, 25c.; $\frac{1}{2}$ pound Kodak Acid Fixing Powder, 15c.; 1 package Bromide Potassium, 5c.; 2 dozen Velox Paper, 50c.; 2 ounces Nepera Solution, for developing Velox, 10c.; Instruction Book, 10c. These articles if purchased separately would cost \$2.30. Price, complete, neatly packed, \$1.50.

A B C Outfit, similar to above, but for 4×5 negatives, \$1.50.

DEVELOPING AND PRINTING

Size.	Developing and Printing Per Pack.		Developing only, Per Pack.		Printing only, Each Exposure.	
	Mounted.	Unmounted.	Mounted.	Unmounted.	Mounted.	Unmounted.
$1\frac{3}{4} \times 2\frac{3}{4}$, 12 exp. - - -	-	-	\$.95	\$.89	\$.40	\$.05 $\frac{1}{2}$
$2\frac{1}{4} \times 3\frac{1}{4}$, 12 " - - -	-	-	1.40	1.28	.50	.07
$2\frac{1}{2} \times 4\frac{1}{4}$, 12 " - - -	-	-	1.50	1.38	.70	.07
$3\frac{1}{4} \times 4\frac{1}{4}$, 12 " - - -	-	-	1.50	1.38	.70	.07
$3\frac{1}{4} \times 4\frac{1}{4}$, 12 " - - -	-	-	1.80	1.68	1.00	.09
$3\frac{1}{4} \times 5\frac{1}{2}$, 12 " - - -	-	-	1.80	1.68	1.00	.09
4×5 , 12 " - - -	-	-	1.80	1.68	1.00	.09
5×7 , 12 " - - -	-	-	2.40	2.10	1.20	.12 $\frac{1}{2}$

Unmounted Velox prints are furnished unless otherwise specified.

"Double Weight" prints will be billed at mounted rates.

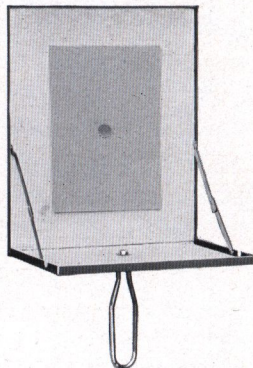
No orders executed for less than 25 cents.

P R E M O A C C E S S O R I E S

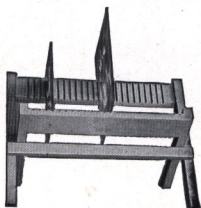
THE KODAK FLASH SHEET HOLDER

The safest and most convenient method of flashlight photography is in the use of Eastman Flash Sheets with the Kodak Flash Sheet Holder.

The sheet is held in place by a saw tooth in the center, and the holder may be held always between the sheet and the operator, either with hand or on a tripod, a tripod socket being provided for this purpose. When all is ready the flash is set off by touching a match from the back to the sheet through the small aperture in the center.



Kodak Flash Sheet Holder	-	-	-	-	-	-	-	-	\$1.00
Eastman Flash Sheets, No. 1, per pkg. ½ doz. sheets, 3 x 4	-	-	-	-	-	-	-	-	.25
Eastman Flash Sheets, No. 2, per pkg. ½ doz. sheets, 4 x 5	-	-	-	-	-	-	-	-	.40
Eastman Flash Sheets, No. 3, per pkg. ½ doz. sheets, 5 x 7	-	-	-	-	-	-	-	-	.60



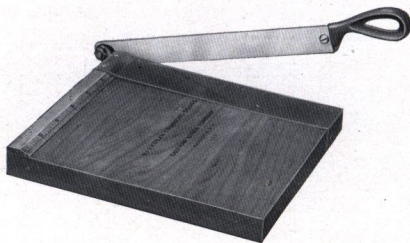
P R E M O N E G A T I V E R A C K

This rack accommodates negatives of all sizes. It folds flat when not in use.

No. 1, for 12 negatives	-	-	-	\$.20
No. 2, for 24 negatives	-	-	-	.25

K O D A K T R I M M I N G B O A R D

A thoroughly reliable trimming board at a moderate price, constructed of hard wood with natural finish. The blade is of the best steel and a rule is fitted to the board.



No. 1, 5 x 5 in.	-	\$.40
No. 2, 7 x 7 in.	-	.60

Transparent Trimming Gauge for either (extra) - - - - \$.20

P R E M O A C C E S S O R I E S

THE KODAK ALBUM.

(Patent Applied For)

Made on a new principle, which does away with mounting prints by paste or otherwise. They are merely slipped into pocket strips at top and bottom, and will not come out unless removed by hand. Has handsome grain leather cover and black leaves with linen finish.

A, $2\frac{1}{4} \times 3\frac{1}{4}$, 25 leaves, 3 on -	\$2.25	E, $3\frac{1}{4} \times 5\frac{1}{2}$, 50 leaves, 3 on -	\$3.50
B, $2\frac{1}{2} \times 4\frac{1}{4}$, 25 leaves, 3 on -	2.50	F, 4×5 , 25 leaves, 2 on -	2.60
C, $3\frac{1}{4} \times 4\frac{1}{4}$, 25 leaves, 3 on -	2.50	G, $4\frac{1}{4} \times 6\frac{1}{2}$, 25 leaves, 2 on -	2.75
D, $3\frac{1}{4} \times 5\frac{1}{2}$, 25 leaves, 3 on -	2.75	H, 5×7 , 25 leaves, 2 on -	3.00

THE FORUM ALBUM

Flexible, black leather embossed cloth cover.

A, 25 black leaves, or N, 25 Sepia leaves, $5\frac{1}{2} \times 7$ - - - -	\$0.35
B, 25 black leaves, or O, 25 Sepia leaves, 7×10 - - - -	.50
C, 25 black leaves, or P, 25 Sepia leaves, 10×7 - - - -	.50
D, 25 black leaves, or R, 25 Sepia leaves, 11×14 - - - -	1.25
E, 50 black leaves, $5\frac{1}{2} \times 7$ - - - -	.50
F, 50 black leaves, 7×10 - - - -	.75
G, 50 black leaves, 10×7 - - - -	.75
H, 50 black leaves, 11×14 - - - -	1.50

CARD MOUNTS

BEVPLANE

Carbon Black and Scotch Gray.

For Prints.	Size Outside.	Per 50.	Per 100.
$2\frac{1}{4} \times 3\frac{1}{4}$ -	4×5	\$.30	\$.60
$2\frac{1}{2} \times 4\frac{1}{4}$ -	$4\frac{1}{4} \times 6$.40	.80
$3\frac{1}{4} \times 4\frac{1}{4}$ -	5×6	.45	.85
$3\frac{1}{4} \times 5\frac{1}{2}$ -	$4\frac{3}{4} \times 7$.45	.90
4×5 -	$5\frac{1}{2} \times 6\frac{1}{2}$.45	.90
5×7 -	7×9	.85	1.70

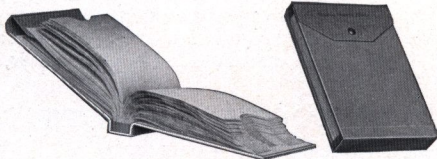
MARINE

London Brown and Ash Gray.

For Prints.	Size Outside.	Per 50.	Per 100.
$2\frac{1}{4} \times 3\frac{1}{4}$ -	$4\frac{3}{8} \times 5\frac{3}{8}$	\$.50	\$.95
$2\frac{1}{2} \times 4\frac{1}{4}$ -	$4\frac{1}{2} \times 6\frac{1}{4}$.50	1.00
$3\frac{1}{4} \times 4\frac{1}{4}$ -	$5\frac{1}{8} \times 6\frac{7}{8}$.50	1.00
$3\frac{1}{4} \times 5\frac{1}{2}$ -	$5\frac{3}{8} \times 8$.70	1.35
4×5 -	6×7	.65	1.25
5×7 -	8×10	1.05	2.10

EASTMAN FILM NEGATIVE ALBUMS

For 100 negatives, $2\frac{1}{2} \times 4\frac{1}{4}$, or smaller - - -	\$.75
For 100 negatives, $3\frac{1}{4} \times 4\frac{1}{4}$, or 4×5 - - -	1.00
For 100 negatives, $3\frac{1}{4} \times 5\frac{1}{2}$, or smaller - - -	1.00
For 100 negatives, 5×7 or smaller - - -	1.50



M I S C E L L A N E O U S

Cable Release - - - - \$.25	Reversible Backs:	
Bulbs and Tubes, No. 2 - -	.25	For View Cameras, 5 x 7 -	\$5.00
Bulbs and Tubes, No. 3 - -	.35	For View Cameras, 6½ x 8½	6.00
Focus Cloth, Rubber - - -	.50	For View Cameras, 8 x 10 -	7.00
Kodak Print Roller, 2 x 6 inch		Premo View Finder - - -	1.50
rubber roller, nicked frame	.50	Screws for Tripod Head:	
Flexo Print Roller, 4-in. rub-		Nos. 1, 2 and 3 - - - -	.15
ber roller, black enameled		Nos. 4 and 5 - - - -	.25
frame - - - - -	.15	Screws for Tripod Leg:	
Photo Paste, 3 oz. tube - -	.15	Nos. 1, 2 and 3 - - - -	.10
Photo Paste, 5 oz. tube - -	.25	Nos. 4 and 5 - - - -	.15
Thermometer Stirring Rod -	.60	Milled Head Screws for	
R. O. C. Tumbler Graduates,		Cameras:	
moulded, 2 ounces - - -	.10	½ inch and smaller - - -	.10
Do., 4 ounces - - - - -	.15	Larger than ½ inch - - -	.15
Do., 8 ounces - - - - -	.20	Shoulder Straps, Black:	
Do., 16 ounces - - - - -	.30	½ x 52-inch with Snaps and	
Ground Glass:		Buckles - - - - -	.40
4 x 5 - - - - -	.15	5⁄8 x 52-inch with Snaps and	
5 x 7 - - - - -	.20	Buckles - - - - -	.50
6½ x 8½ - - - - -	.25	½ x 66-inch, with Buckle -	.40
8 x 10 - - - - -	.30	5⁄8 x 74-inch, with Buckle -	.50
Eastman Printing Frames:		Tan Straps for View Cases	
3¼ x 4¼, opens two-thirds -	.25	with Buckle. Specify style	
3¼ x 5½, for films, opens		and size of camera when	
two thirds - - - - -	.25	ordering:	
3¼ x 5½, for plates, opens		34, 40 and 44 inches - - -	.40
two-thirds - - - - -	.25	52, 60 and 66 inches - - -	.50
4 x 5, open two-thirds - -	.25	Tubing, per foot - - - -	.06
5 x 7, opens two-thirds - -	.35		

TERMS

Prices included in this catalogue are net, excepting to dealers.

When ordering, give shipping directions, whether by freight, express or otherwise. If not stated, we use our discretion.

Mail orders must be accompanied with remittance for full amount of purchase, including postage, or we will ship by express.

All goods are carefully packed and we cannot be held responsible for any damage during transit.

Orders for special parts or for goods not listed in this catalogue will be filled on customer's responsibility only. Under no circumstances can we permit the return of such goods for credit.

All prices are F. O. B. at Rochester, N. Y.

ROCHESTER OPTICAL DIVISION,
EASTMAN KODAK CO. ROCHESTER, N. Y.



A. B. WILT
81 13th STREET
FRANKLIN, PA.