

The 70mm Camera For: *a wide range of Spectral Coverage*



MODEL 294 **Still Picture Camera**

Salient Features

The Model 294 is a sturdy, lightweight high-resolution camera designed to obtain spectrographs and conventional photographs on 70mm perforated roll film over the spectral range from infrared to ultraviolet (2,000 to 10,000 Angstroms). Three high speed precision ground lenses will be used to cover this spectral range with a focusing capability ranging 3 feet to infinity.

Preloaded magazines having a capacity of 50 exposures (thin base film) will be used. The magazines are of the quick-disconnect type for rapid attachment and removal, and are color coded to match the corresponding lens and film emulsion.

In addition, the focal plane distance of each magazine is accurately located to provide the best resolution with respect to the spectral range of the particular film being used.

An electronic exposure timer, variable from 1 second to 5 minutes, is included to provide a precisely timed long-exposure capability.

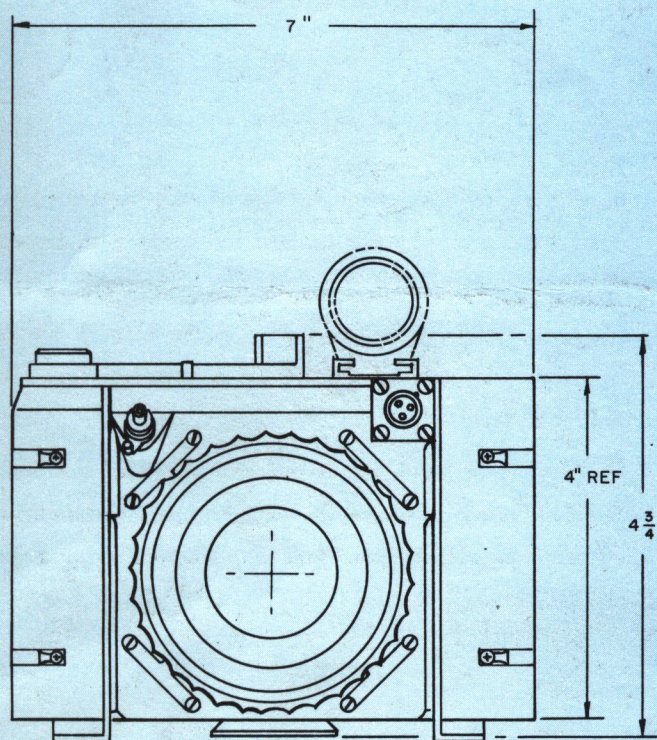
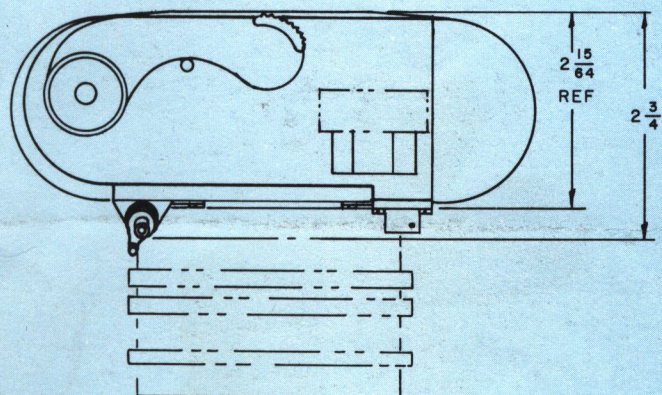
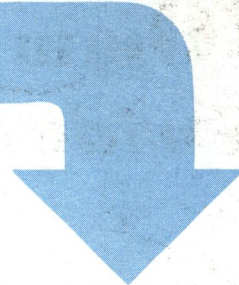
Designed to be hand-held or operated in a fixed position, the detail-gathering power of the new, compact aluminum alloy camera is capable of producing photographs having a resolution of 200 lines/mm.

J. A. MAURER, Inc.

37-01 31st St.
Long Island City, N. Y.



SPECIFICATIONS



Dimensions:

Length: 2 $\frac{3}{4}$ " (exclusive of lens)
 Width: 7"
 Height: 4 $\frac{3}{4}$ " (exclusive of viewfinder)

Weight: 5 lbs. (exclusive of film and lenses)

Film: 70mm preloaded magazine

Film Capacity: 50 exposures (12 feet) using thin base film (2.5 mils thickness)

Film Format: 2 $\frac{1}{4}$ " x 2 $\frac{1}{4}$ "

Shutter Type: Compur between-the-lens shutter

Shutter Speeds: 1/500 of a second to 5 minutes (with auxiliary electronic timer)

Lenses:

- | | | |
|----|--------|--------------------------------|
| 1) | f/2.8 | 80mm f.l. (visible region) |
| 2) | f/0.95 | 50mm f.l. (infrared region) |
| 3) | f/3.3 | 74mm f.l. (ultraviolet region) |

Temperature Range: -15 degrees F to +200 degrees F

Acceleration Range: Up to 15 g's

Resolution: 200 lines/mm on film (visible region)

Viewfinder: Newton ring type, 1 $\frac{1}{8}$ " diameter

Spectral Range: 2,000 to 10,000 Angstroms

Mode of Operation: Manual