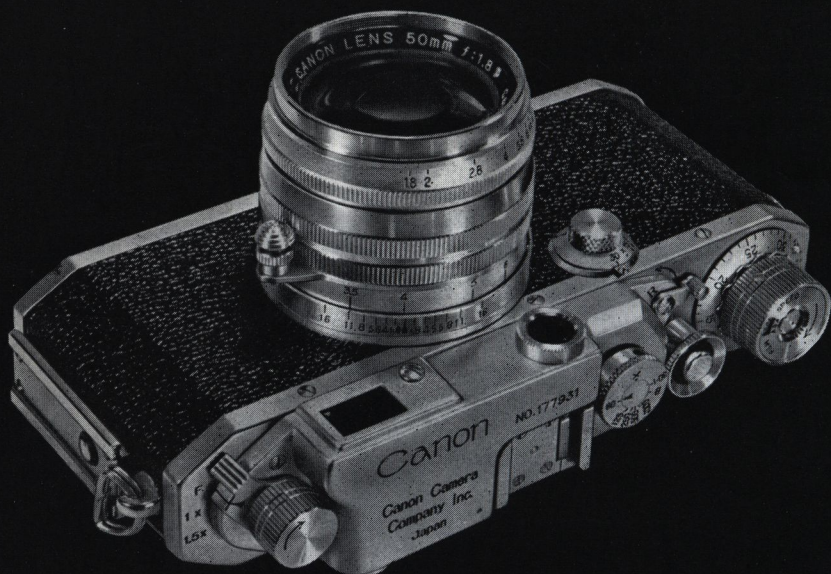


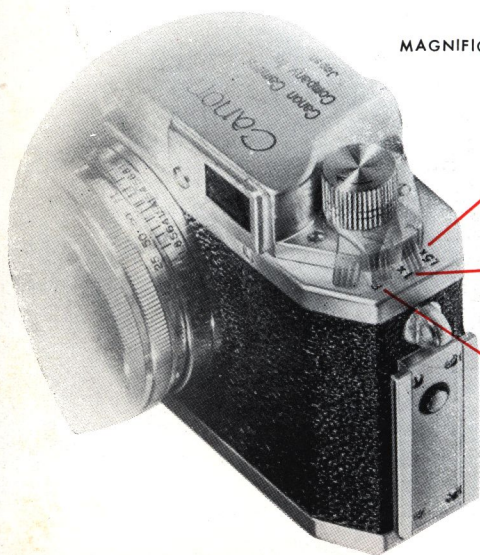
Canon cameras



CANON CAMERA COMPANY INC. TOKYO, JAPAN



Model IV-Sb



MAGNIFICATION CONTROL

There are three positions for the Magnification Control Lever: F, 1x, and 1.5x. The 1x position corresponds to the image seen and recorded by any CANON LENS with a focal length of 100 mm. The 1.5x position shows the image for any CANON LENS with a focal length of 135 mm. 1.5x position will help you to have a sharp focusing, but the F position shows the exact image recorded by any CANON LENS with a focal length of 50 mm.



1.5 X for 135 mm lens



1 X for 100 mm lens



F for 50 mm standard lens

CANON CAMERA MODEL IV-Sb

FILM SIZE

The CANON CAMERA MODEL IV-Sb is supplied with either a 50mm f:1.8 or a 50mm f:1.5 ultra-hard coated Canon lens. It is a 35mm precision-built miniature camera allowing 36 exposures, 36mm x 24mm size frame, in one cartridge.

APPEARANCE

The strong die-cast aluminium body is covered in black, grained plastic leather with an attractive satin-chromed diamond-finished and partly aventurine-chromed. These features give the Canon camera a trim, neat appearance.

SHUTTER SPEED

An efficient, smooth-moving focal plane shutter provides a range of speeds 1, 1/2, 1/4, 1/8, 1/15, 1/30, 1/60, 1/125, 1/250, 1/500, 1/1000 sec. plus T., B. and X contact.

SINGLE MOTION FILM

ADVANCE & SHUTTER SETTER

Setting of the shutter and advancing of the film is made simultaneously.

NO DOUBLE EXPOSURES

Accidental double exposures are effectively prevented. Double and multiple exposures can be made if necessary.

RANGE-VIEWFINDER

A novel image magnification range-view finder provides correct fields of view for 50mm, 100mm and 125mm lenses and permits quick, accurate focusing. Adjustments are made by a simple three positional lever. This device is patented in Japan.

BODY SYNCHRONIZATION

An internal flash synchronization system permits the use of F.P. bulbs at all shutter speeds marked on the camera. Speedlight and peak bulbs may also be used with perfect results at a limited range of shutter speeds. This device is patented both in Japan and U.S.A.

FILM SPEED DIAL

The type of the film loaded can be seen easily from the dial giving the speed in ASA values.

INTERCHANGEABLE LENSES

Canon lenses whose focal lengths range from 28mm to 135mm can be accurately coupled to the range-finder of all Canon cameras. All glass-to-air element surfaces are hard-coated to reduce internal reflection and increase transmission.

ACCESSORIES

Over 130 varied accessories increase the already outstanding adaptability of the Canon camera and make it exceptionally versatile.

SPECIALIZED USES

A high degree of accuracy, coupled with smooth and rapid operational adjustment, makes the Canon camera suitable for scientific and other professional work, such as the recording of scientific phenomena, results of experiments and the copying of drawings and documents. Highly efficient specialist accessories such as the copying apparatus, photo-micrographic unit and photo-oscilloscope unit help to give the Canon camera a place high on the list of scientific achievement.

CANON RAPID WINDER

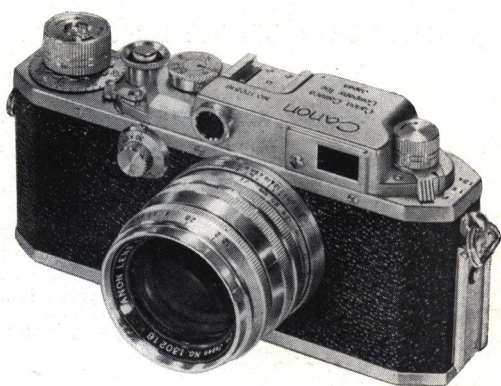


Permits successive exposures with extreme speed; it consists of an especially designed baseplate which may be interchanged with the standard baseplate. Canon rapid winder has a trigger which slides into groove and is operated by pulling it along the groove, this action enables to wind the shutter and move the film to the next section.

[Note] All the Canon Cameras bearing serial numbers above 50,200 can be fitted with Canon Rapid Winder, of these cameras bearing a serial number below 170,000 slight alteration may be necessary. Canon Cameras with serial numbers above 170,000 can be used directly with the Canon Rapid Winder without any change.

Model II-S

The Canon Camera Model II-S is supplied with either a 50mm f:1.8 or a 50mm f:1.5 ultra-hard coated Canon lens. Canon camera model II-S is identical to model IV-Sb in both quality and function except the model II-S has shutter speeds up to 1/500 sec.



Model II-D

The Canon Camera Mode II-D has a range of shutter speeds from 1 to 1/500 sec. and is without the film type indicator and internal flash synchronization system. Except for these differences, the Canon camera II-D is identical to Canon camera IV-Sb and II-S both in quality and function.



FLASH UNIT MODEL Y

for CANON CAMERA MODELS IV-Sb & II-S

Canon Flash Unit Model Y is designed for bayonet-base flash bulbs for use with Canon Camera of Synchronized Model IV-Sb and II-S. This Unit is precision built by highly trained craftsmen using the finest raw materials. Electrical Contacts are especially designed to give minimum resistance so that positive and accurate flash is ensured at all times and that the batteries will have as long as life as possible.



FLASH UNIT MODEL B-III

for CANON CAMERA MODEL II-D

A mechanical flash unit, Canon Flash Unit Model B-III, permits flash-synchronized pictures with the Canon Camera II-D.



Canon Camera Co., Inc.

312, Shimomaruko-cho, Ohta-ku, Tokyo, Japan

Tel: 73-2191. 6111.

Ginza Service Station

5-3 Ginza Tokyo, Japan Tel: 57-3767

Osaka Service Station

2 Umeda Osaka, Japan Tel: 45-7331

No. 279

4-55

Daito