

Voigtländer

NEW METAL HELIAR REFLEX CAMERA



$\frac{1}{4}$ -Plate or 9×12 c/m. **'VIDA'** $\frac{1}{4}$ -Plate or 9×12 c/m.

With Heliar Lens, **F 4.5.**

The "Vida" is the most perfect of all Reflex Cameras, comprising

**EFFICIENCY, COMPACTNESS,
AND DURABILITY.**

It has the following advantages:—

1. The Camera is constructed entirely of light metal.
2. The focussing hood erects itself automatically.
3. The Apparatus is fitted with a Self-Capping Focal Plane Shutter, which is released by gentle pressure.
4. The Mirror and Shutter are set simultaneously.
5. An Extension Adapter can be fitted to the front for using lenses up to 14 inches focus.

PRICES.

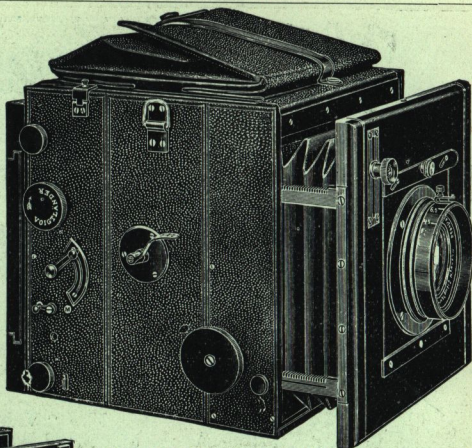
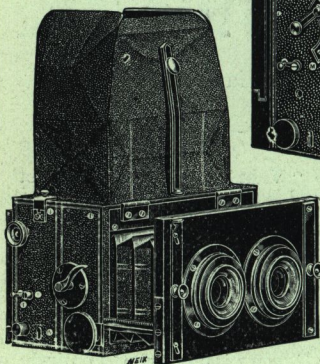
Size of Plate.	Lens.	Camera with 3 Double Dark Slides, Solid Form, Code Word.	Camera with 3 Folding Double Dark Slides, Book Form, Code Word.	Camera with 3 Double Dark Slides with Vulanite Shutters, Code Word.	Camera with Magazine for 12 Plates, Code Word.
$\frac{1}{4}$ -Plate, or 9×12 c/m.	Heliar 18 c/m. $7\frac{1}{4}$ ins. F 4.5	£21 5 0 Festvida	£21 15 0 Holzvida	£21 15 0 Guvida	£22 13 0 Wexvida

Dimensions of camera $6\frac{1}{2} \times 6\frac{1}{2} \times 6\frac{1}{2}$ ins. Weight 4 lbs. 3 ozs.
 Telephoto Attachment, £3 10s. Film Pack Holder, 12/- Mechanical Release, 5/-
 Solid Leather Sling Case for Camera and 3 Double Dark Slides, 25/-
 Ditto for Camera and 6 Double Dark Slides 30/-

Send for Complete
Catalogue to

12, Charterhouse St., Holborn Circus, London, E.C.

Voigtländer HELIAR REFLEX CAMERA



This is the most perfect type of Hand Camera. It is of superior construction, and is fitted with a Rack and Pinion Movement working on all the four corners of the front, ensuring rigidity when extended. The Mirror is of Optically Worked Glass, silvered on the surface, and coated with a colourless preparation for preservation. The image reflected is therefore identical with that obtained upon the plate. This arrangement permits the photographer to observe the image up to the amount of exposure. The Camera is fitted with a Focal Plane Shutter, giving time and instantaneous exposures up to $\frac{1}{1000}$ th of a second; and is guaranteed to work without vibration. The Camera is also fitted with a reversible back.

PRICES.

Size of Plate.	Dimensions of Camera.	Lens	Camera with 3 Folding Double Dark Slides, Book Form. Code Word.	Camera with 3 Double Dark Slides with Vulcanite Shutters. Code Word.	Camera with Magazine for 12 Plates. Code Word.
$2\frac{1}{2} \times 3\frac{1}{2}$ $6\frac{1}{2} \times 9$ c/m.	$5\frac{1}{4} \times 5\frac{1}{4} \times 6$ ins.	Heliar $13\frac{1}{2}$ c/m. $5\frac{3}{8}$ ins. F 4'5.	..	£16 5 0 Kleinspigel	£16 17 0 Sexwek
..	..	Ditto with Telephoto attachment.	..	£19 5 0 Kleitespigel	£19 17 0 Sextespigel
$\frac{1}{2}$ -Plate or $12 \times 16\frac{1}{2}$ c/m.	$10 \times 10 \times 8\frac{1}{2}$ ins.	Heliar 24 c/m. $9\frac{1}{2}$ ins. F 4'5	£30 0 0 Gropigel	£30 0 0 Grogus- pigel	£31 10 0 Growespigel
..	..	Ditto with Telephoto attachment	£34 10 0 Grotespigel	£34 10 0 Grogutel	£36 0 0 Growektel
Stereoscopic $1\frac{3}{4} \times 4\frac{1}{4}$ ins. or $4'5 \times 10'7$ c/m.	$4 \times 4 \times 6\frac{3}{4}$ ins.	2 Heliars $8\frac{1}{2}$ m/m. F 4'5	..	£20 0 0 Sterespigel	£20 14 0 Sterewex

Cost of Mechanical Release, 5/- extra.

Solid Leather Sling Case for Camera and			three Double Dark Slides, 20/-	} $2\frac{1}{2} \times 3\frac{1}{2}$ or $6\frac{1}{2} \times 9$ c/m
"			six Double Dark Slides, 25/-	
"			three Double Dark Slides, 35/-	} $\frac{1}{2}$ -Plate or $12 \times 16\frac{1}{2}$ c/m
"			six Double Dark Slides, 40/-	
"			three Double Dark Slides, 20/-	} Stereoscopic $1\frac{3}{4} \times 4\frac{1}{4}$ ins.
"			six Double Dark Slides, 25/-	
				$4'5 \times 10'7$ c/m.

Sole Agent for Great Britain and Colonies, F. G. PHILLIPS.

Voigtländer

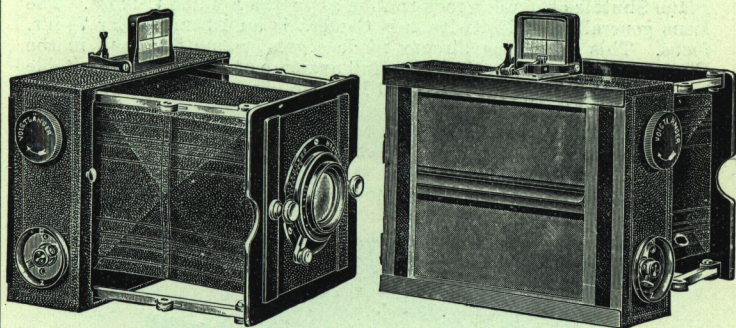
Metal Spring Camera "Salta"

WITH

Improved Patented Focal Plane Shutter (Self-Capping).

 $\frac{1}{4}$ Plate, or 9×12 c/m. $\frac{1}{2}$ Plate, or 13×18 c/m.

Press one lever and the Camera is ready for Exposure.



This Camera is the most perfect apparatus of the Folding Focal Plane Type that has yet been manufactured; it has the advantage of being instantly brought into position for exposure by simply pressing the small lever to the right of the finder, this releases the finder and the Camera front which spring into position. Another advantage is the Self-capping Focal Plane and Shutter which is easily manipulated and can be set when the sheath of the dark slide has been drawn out and put in position.

		Fitted with Voigtländer Lens in Focussing Mount.			With 3 Double Dark Slides, Solid Form with folding Wood Shutters.			With 3 Double Dark Slides, Solid Form with extractable Vulcanite Shutters, or Book Form with folding Wood Shutters.		
		c/m			£	s.	d.	£	s.	d.
$\frac{1}{4}$ Plate or 9×12 c/m size.	{	Dynar	$13\frac{1}{2}$	F 6	13	10	0	14	0	0
		Collinear III.,	$13\frac{1}{2}$	F 6.8	14	15	0	15	5	0
		Collinear II.,	$13\frac{1}{2}$	F 5.4	15	10	0	16	0	0
		Heliar	15,	F 4.5	15	10	0	16	0	0
		Telephoto At- tachment A.								
$\frac{1}{2}$ Plate or 13×18 c/m size.	{	For Objectives	$13\frac{1}{2}$,	c/m	3	0	0	..		
		"	15,	c/m	3	5	0	..		
		Dynar	18,	F 6	..			16	15	0
		Collinear III.,	18,	F 6.8	..			18	0	0
		" II.,	20,	F 5.4	..			20	0	0

Excelsior Telescopic Tripod, Brass, 11/6; Aluminium, 18/-

Voigtländer Heliar Camera

WITH

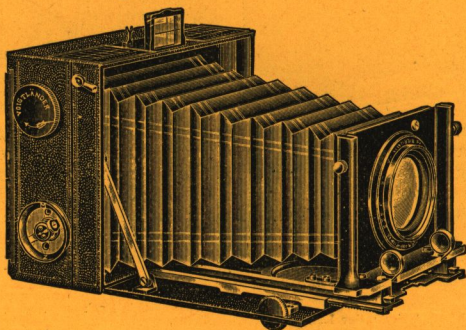
Improved Patented Focal Plane Shutter (Self-Capping).

$\frac{1}{4}$ -Plate, or 9×12 cm. Continental size only.

This Camera is constructed of Light Metal similar to the Voigtländer Metal Folding Camera, and for high-class workmanship and mechanical ingenuity is unsurpassable. The Heliar Camera is fitted with a Focal Plane Shutter of similar construction as in the Folding Camera. The Lens generally supplied with this Camera is an 18 cm. Heliar $7\frac{1}{2}$ ins. focus. This Lens has already made a great name for itself in the Photographic world, working at a full aperture of F 4.5. It is suitable for all the requirements of general Photography, and is the best of all modern Lenses.

The Camera is fitted with Rack and Pinion Focussing movement with extension to 11 ins., enabling Lenses of various Focal lengths to be used.

A Lens Shutter can be fitted to this Camera in addition to the Focal Plane if desired, enabling the user to obtain a greater variety of exposure.



With Voigtländer Lens in Countersunk Mount.	Camera with 3 Double Dark Slides, Solid Form with Folding Wood Shutters.	Camera with 3 Double Dark Slides, fitted with extractable Ebonite Shutters or Book Form with Folding Wood Shutters.
Heliar 18cm., $7\frac{1}{2}$ ins., F 4.5	£16 0 0	£16 10 0
Collinear II. 15cm., F 5.4	14 15 0	15 5 0

Dimensions when closed, $6 \times 5 \times 2\frac{1}{2}$ ins.

Weight, without Lens, 2 lbs. 9 ozs.

Telephoto Attachment to above Camera, £3 10s.

Leather Case for Camera and 3 Dark Slides, 18/-

6 20/-

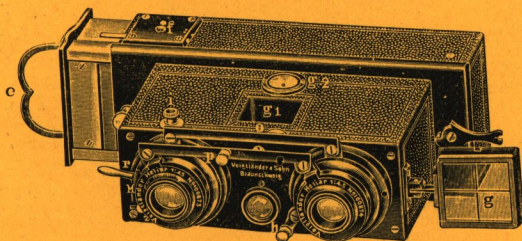
Excelsior Telescopic Tripod - Brass, 11/6 .. Aluminium, 18/-

Sole Agent for Great Britain and Colonies, F. G. PHILLIPS.

Voigtländer

STEREOPHOTOSCOPE.

New Model fitted with Sector Shutter for time and instantaneous exposure up to $\frac{1}{200}$ sec.



The "Stereophotoscope" will produce the most perfect Stereoscopic pictures upon plates $4\frac{1}{4} \times 1\frac{3}{4}$ inches, 4.5×10.7 c m. The body is constructed from one piece of metal, and it is, therefore, most suitable for warm or damp climates. The Lenses are fitted in focussing mounts. The Magazine Changing Box carries 12 plates, and has an automatic counter showing number of plates used. A Film pack holder can also be supplied. Stereophotos when viewed through the special size Stereoscope are magnified, and appear as large as the ordinary size Stereoscopic Views. The whole apparatus is of the **very highest class workmanship.**

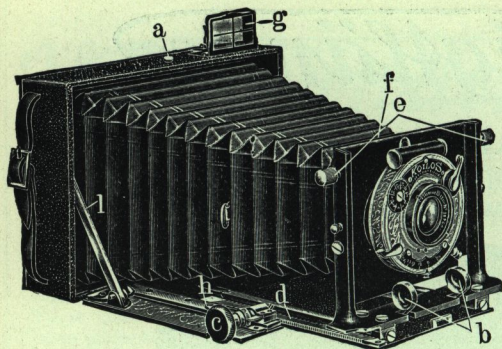
The Lenses are fitted with Iris Diaphragms, both of which can be regulated by one movement.

Prices. Code Word.

	£	s.	d.	
Price of Voigtländer "Stereophotoscope," with two "Heliar" lenses, F 4.5, correctly paired, two view finders, changing box, and leather sling case complete	20	0	0	Photoskop
Ditto with two Collinear Lenses III., F 6.8	17	10	0	Cofotoskop
Vertical Rising Front (Heliar Lenses)	2	10	0	Vértoskop
" " " (Collinear Lenses)	2	10	0	Coverskop
Extra magazine for 12 plates	4	0	0	Fotmagazin
Adapter for Single Nickel Dark Slides	8	0		Fotodapter
Six Single Nickel Dark Slides in case	10	0		Nickeletui
Film Pack Holder	1	10	0	Fotpack
Stereoscope with Achromatic lenses for viewing the transparent "Stereophotoscope" views	1	0	0	Fotostereo
Reversing Frame for making the Stereoscopic Positive without cutting the Negative	8	0		Stereoram

All our "Stereophotoscopes" are engraved with the name Voigtländer.

Size of Stereophotoscope complete, $5\frac{1}{2} \times 4 \times 2\frac{3}{4}$ ins. Weight, 1 lb. 15 oz.



. The .
Voigtlander
**Alpine
 Camera,**

$\frac{1}{4}$ -Plate, or 9×12 cm.

Postcard $5\frac{1}{2} \times 3\frac{1}{2}$ ins.
 or 10×15 c/m

For Plates or Film
 Pack.

Especially suitable for use in Tropical Climates.

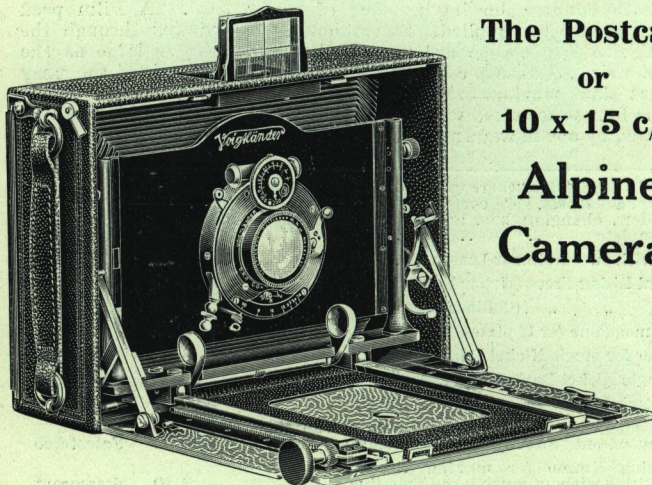
This Camera is entirely constructed of LIGHT METAL, and is fitted with a Voigtlander Lens, in Koilos or Compound Shutter. It weighs 1 lb. 11 ozs. $\frac{1}{4}$ -Plate size, 2 lbs. 10 ozs. Postcard size.

In consequence of the very long triple extension, work can be done with the Back Combination of the Collinear Lens.

This Camera can be fitted with a telephoto attachment which has been especially designed to screw inside the camera. This form will be seen to be a great advantage for producing good telephoto work.

The Postcard size or 10×15 c/m Camera can be supplied fitted for Panoramic or Stereoscopic work.

The measurements of the apparatus are $5\frac{3}{4} \times 4\frac{3}{8} \times 1\frac{1}{2}$ inches $\frac{1}{4}$ -Plate size, $7\frac{3}{8} \times 4\frac{3}{4} \times 2\frac{1}{4}$ inches Postcard or 10×15 c/m size.



**The Postcard
 or
 10×15 c/m
 Alpine
 Camera.**

For Prices see next page.

Sole Agent for Great Britain and Colonies, F. G. PHILLIPS.

Voigtländer Alpine Camera

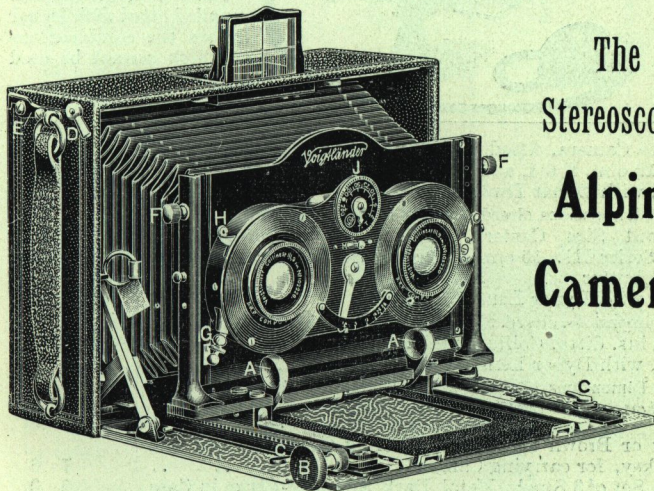
PRICES.

$\frac{1}{4}$ Plate or 9×12 c/m.
Size.

	£	s.	d.
Camera with Collinear Lens Series III., 12 c/m., in Koilos or Compound Shutter, six Single Metal Dark Slides and Focussing Screen ..	11	10	0
Ditto, with Collinear III., $13\frac{1}{2}$ c/m.	12	0	0
Ditto, with Dynar 12 c/m.	10	5	0
Ditto, with Dynar $13\frac{1}{2}$ c/m.	10	15	0
Ditto, with Dynar 15 c/m.	11	5	0
Telephoto Attachment, giving a magnification of $2\frac{1}{2}$ times ..	3	0	0
Film Pack Holder, $\frac{1}{4}$ Plate ..	7	6	
Contrast Filters, A, B, or Orange, each ..	17	6	
Solid Leather Sling Case for Alpine Camera and 6 Slides ..	10	6	

Postcard $5\frac{1}{2} \times 3\frac{1}{2}$ inches.
 10×15 c/m. or Stereoscopic
Size.

	£	s.	d.
Camera with Collinear Lens, Series III., 15 c/m., in Koilos or Compound Shutter, six Single Metal Dark Slides and Focussing Screen ..	17	10	0
Ditto, with 2 Collinear Lenses III., 9 c/m., in Koilos or Compound Shutter ..	21	10	0
Ditto, with 3 Objectives and Koilos or Compound Shutters ..	29	10	0
Telephoto Attachment for Collinear III., 15 c/m., giving a magnification of $2\frac{1}{2}$ times ..	3	10	0
Solid Leather Sling Case for Camera and 6 Slides ..	17	6	



The
Stereoscopic
Alpine
Camera.

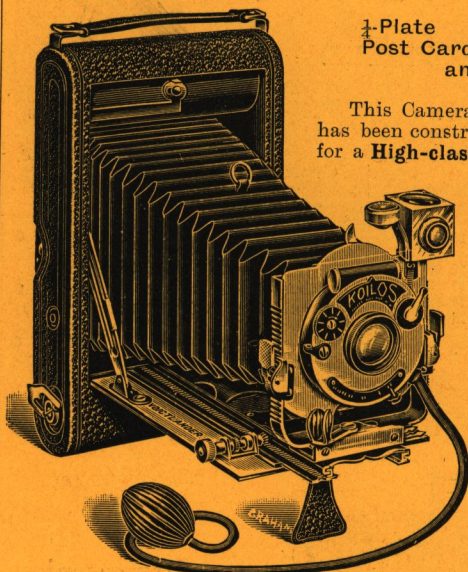
Excelsior Telescopic Tripod—Brass, 11/6 ... Aluminium, 18/-

Send for Complete
Catalogue to

12, Charterhouse St., Holborn Circus, London, E.C.

Voigtländer

ROLL FILM AND PLATE CAMERAS



$\frac{1}{4}$ -Plate .. $4\frac{1}{4} \times 3\frac{3}{4}$ ins.
Post Card size $5\frac{1}{2} \times 3\frac{1}{2}$ ins.
and 5×4 ins.

This Camera is extremely portable, and has been constructed to meet the demand for a **High-class Folding Camera** suitable for all the requirements of up-to-date Photography. The body is constructed of mahogany and aluminium, covered black leather, with nickel fittings, superior leather bellows, double extension rack and pinion movement, enabling the **back combination of the Collinear Lens** to be used when desired.

These Cameras are also supplied fitted with Dynar Lenses, the combinations of which cannot be used separately.

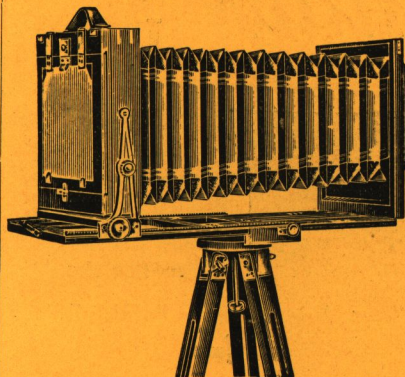
	£	s.	d.
$\frac{1}{4}$ -Plate Camera, fitted with Collinear Lens, Series III., 12 c/m, F 6.8, and Koilos or Compound Shutter ..	10	0	0
Ditto, with Dynar Lens, 12 c/m, F 6	8	15	0
Dimensions, closed, $8 \times 4\frac{1}{2} \times 2$ ins.; weight, 2 lbs.			
Postcard Size Camera, fitted with Collinear Lens, Series III., 15 c/m., F 6.8, in "Koilos" or Compound Shutter	12	0	0
Ditto, with Dynar Lens, 15 c/m, F 6	10	15	0
Dimensions, closed, $9\frac{1}{2} \times 5 \times 2$ ins.; weight, 2 lbs. 14 ozs.			
5×4 ins. ditto, Collinear III., $13\frac{1}{2}$ cm	10	15	0
Ditto, with Dynar Lens, 15 c/m, F 6	10	5	0
Dimensions, closed, $9 \times 5\frac{1}{2} \times 2\frac{1}{2}$ ins.; weight, 2 $\frac{3}{4}$ lbs.			
These prices include 3 single metal dark slides and focussing screen, fitted with hood cover, in case.			
Black or Brown Solid Leather Sling Case with lock and key, for carrying Camera	7	6	
Extra Set of 3 Single Metal Dark Slides, $\frac{1}{4}$ -Plate, in Case	6	0	
Ditto ditto Postcard	7	6	
Ditto ditto 5×4 ins.	7	6	

Excelsior Telescopic Tripod - Brass, 11/6 .. Aluminium, 18/-

Sole Agent for Great Britain and Colonies, F. G. PHILLIPS.

Voigtländer Field Cameras.

MODEL A.



Model A.

This Camera is of superior construction. The extension is done by double rack and pinion movement. Lightness and portability have not been secured by weakening any part of the Camera, but by eliminating brass and wood from places where they served no useful purpose, and in consequence great rigidity is guaranteed. The Camera is made of the finest seasoned Mahogany, with polished and lacquered brass bindings.

Model A

English.	Size.	Continental.	Length of Extension.	Price, with 3 double Dark Slides.			Price of 1 double Dark Slide.		
ins.		c/m	ius.	£	s.	d.	£	s.	d.
$3\frac{1}{2} \times 5\frac{1}{2}$		10 x 15	14	5	5	0	0	15	0
$4\frac{1}{2} \times 6\frac{1}{2}$		13 x 18	16	5	5	0	0	15	0
$6\frac{1}{2} \times 8\frac{1}{2}$		18 x 24	24	6	15	0	0	18	0

Model B

$6\frac{1}{2} \times 4\frac{3}{4}$	13 x 18	24	10	0	0	1	2	0
$8\frac{1}{2} \times 6\frac{1}{2}$	18 x 24	32	12	0	0	1	8	0
12 x 10	24 x 30	40	15	5	0	1	15	0
16 x 12	30 x 40	48	22	0	0	2	5	0

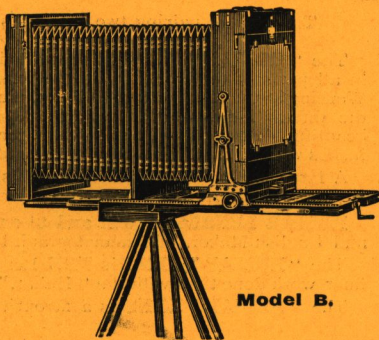
The two first sizes are fitted with Stereoscopic division.

Model B. Triple Extension. Front extended by a Screw, and the back by Rack and Pinion.

Specially Brass Bound, for Use in Hot Climates.

The screw extension movement, fitted for racking out the front, is so arranged that when extended the Camera is always balanced on its stand.

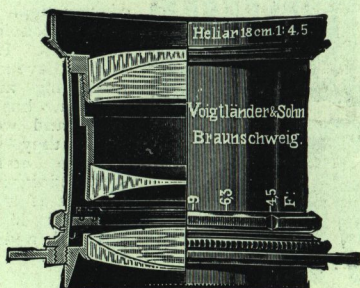
$6\frac{1}{2} \times 4\frac{3}{4}$ ins. and $8\frac{1}{2} \times 6\frac{1}{2}$ ins. sizes, with Stereoscopic Division, if desired.



Model B.

Voigtländer 'Heliar' Lens.

A brilliant
Anastigmatic
Objective,
working at a
full aperture of
F 4.5
in all sizes.



Professional
Photographers
use the
"HELIAR."

Equiv- alent Focus.		Diam. of Lens.		Size of Plate sharply covered F 4.5.		Price.	Code Word.	Counter- sunk Mount.	Code Word.	Focussing Mount.	Code Word.
c/m	ins.	m/m	ins.								
5	2	11	1 1/8 x 2			£4 0 0	Fiasco
5 1/2	3	19	2 x 2			4 15 0	Fiber
12	4 1/2	27	3 1/4 x 2 5/8			5 10 0	Fibrin	£5 15 0	Fixage	£6 5 0	Fiscos
13 1/2	5 1/2	31	4 1/4 x 3 1/4			6 0 0	Fibro	6 5 0	Fibrund	6 15 0	Fibrano
15	6	33	4 3/4 x 3 3/4			6 5 0	Fibrinosus	6 10 0	Fibroso	7 0 0	Filiorum
18	7 1/2	40	5 1/2 x 4			8 0 0	Figella	8 5 0	Filigran	8 15 0	Figurina
24	9 3/4	54	7 x 5			13 0 0	Pinota	13 10 0	Finte	14 0 0	Finale
30	11 3/4	67	8 1/4 x 6 1/4			18 0 0	Firna
36	14 1/4	80	9 1/2 x 7			24 0 0	Fiscano
42	16 1/2	93	10 1/2 x 8 1/2			31 0 0	Fiscal
48	19	107	12 x 10			37 10 0	Fistel
60	24	132	16 x 12			75 0 0	Finger

The cost of pairing two "Heliars" for Stereoscopic work is 8/-

The "HELIAR" LENS is acknowledged by Professional Photographers in all parts of the world to be the finest Anastigmat Lens yet produced. Working at the full aperture of F 4.5, pictures can always be made even in the dulllest light, while for portraits and groups it is unrivalled for its beautiful definition. Quarter-plate pictures can be enlarged to 34 x 47 inches without material loss of detail and definition.

A large variety of work done by this Lens can be seen at the London Branch, 12, Charterhouse Street, Holborn Circus, E.C.

HELIAR LENSES, 5 1/2 c/m and 8 1/2 c/m, are used by all the Continental and English Makers of Cinematograph Films.

The "HELIAR" LENS is THE Lens for Reflex Cameras. There is no finer work done than with the "Heliar."

The "HELIAR" LENS is a favourite with Press Photographers.

Sole Agent for Great Britain and Colonies, F. G. PHILLIPS.

Voigtländer

“COLLINEAR” LENS.

“THE PERFECT LENS.”

The “COLLINEAR” LENS may well be styled “The Perfect Lens,” although one of our earliest and best known type of Anastigmat lenses, it is more popular in the photographic world of to-day than ever. It is peculiarly suited for both amateur and professional photographers, and there is no work for which the “Collinear” is unsuitable.

“Collinear” Lenses are symmetrical, the front and back combination being exactly the same focus, either can be used separately, and each in itself is a corrected achromatic anastigmat, giving searching definition. The detail in photographs taken with either or both combination of this lens is remarkable.

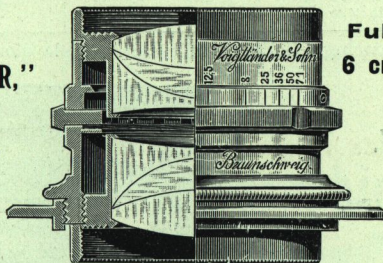
We supply “Collinears” to fit Kodak Hand Cameras so mounted that they can be fitted by the purchaser into the shutter of his camera. No alteration in the camera or shutter is necessary. A correctly marked diaphragm scale is supplied with each set.

For No. 3 F. P. Kodak “Collinear” III., F 6.8 special focus 125 m/m .. £5 5 0
 „ No. 3a „ „ „ „ „ 166 m/m .. £6 5 0
 „ No. 4a „ „ „ „ „ 210 m/m .. £8 15 0

When ordering specify which type of shutter your camera has.

“COLLINEAR,”

SERIES II.



Full Aperture.

**6 cm. to 20 cm.,
F 5.4.**

**25 cm. to 60
cm., F 6.3.**

Equivalent Focus.		Diameter of Lens.	Size of Plate sharply covered.		Ordinary Mount.	Code Word.	Countersunk Mount.		Focussing Mount.	
			At Full Aperture.	Stopped Down.			Price.	Code Word.	Price.	Code Word.
cm.	ins.	mm.	ins.	ins.	£ s. d.		£ s. d.		£ s. d.	
6	2 1/2	11	2 x 2	3 1/4 x 3 1/4	4 10 0	Galen
7	2 3/4	13	3 1/4 x 2 3/4	4 x 3 1/4	4 10 0	Galeotto
9	3 3/8	17	4 x 2 3/4	4 x 3 3/8	5 0 0	Gandara	5 5 0	Gabes	5 15 0	Nager
12	4 3/8	23	4 1/2 x 3 3/8	6 1/2 x 4 3/8	5 15 0	Gaston	6 0 0	Gaflun	6 10 0	Narcose
13 1/2	5 1/8	26	5 x 4	6 3/4 x 5 1/8	6 5 0	Gatter	6 10 0	Galmei	7 0 0	Narcin
15	6	29	6 1/4 x 4 3/8	8 1/4 x 6 1/4	6 15 0	Gawein	7 0 0	Gambia	7 10 0	Nauders
20	8	38	7 1/2 x 5	9 1/2 x 7	9 0 0	Gemma	9 8 0	Gaza	10 0 0	Negus
25	9 7/8	40	8 1/2 x 5 1/2	10 x 8	11 0 0	Georgia
31	12 1/2	48	8 1/2 x 6 1/2	12 x 10	15 0 0	Ginster
37	14 3/8	58	9 x 7	14 x 10 3/8	20 0 0	Gorgone
44	17 1/8	70	11 x 8	15 3/4 x 11	27 0 0	Gudrun
52	20 3/8	82	12 x 10	17 1/2 x 13	34 0 0	Guntram
60	23 3/8	91	13 3/8 x 10 3/8	19 x 15	45 0 0	Gunter

7 cm. & 9 cm. are the lenses specially made for Cinematograph work.

The cost of pairing two Collinears for Stereoscopic Work is 8/-

Send for Complete
Catalogue to

12, Charterhouse St., Holborn Circus, London, E.C.

Voigtländer Collinear

SERIES III.

Full Aperture.

7 cm. to 18 cm., F 6·8.

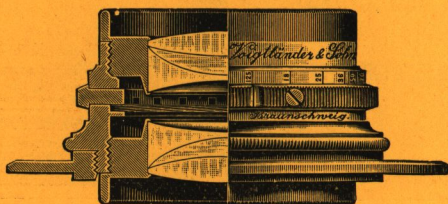
20 cm. to 58 cm., F 7·7.

Equivalent Focus.		Diameter of Lens.	Size of Plate sharply covered		Ordinary Mount.		Code Word.	Countersunk Mount.		Focussing Mount.			
			At Full Aperture.	Stopped Down.				Price.	Code Word.	Price.	Code Word.		
cm.	ins.	mm.	ins.	ins.	£	s.	d.	£	s.	d.	£	s.	d.
7	2 ³ / ₄	11	2 ¹ / ₂ × 1 ³ / ₄	4 × 3 ¹ / ₄	4	0	0	Hadramaut
9	3 ¹ / ₂	14	3 ¹ / ₂ × 2 ¹ / ₂	4 ¹ / ₂ × 3 ¹ / ₄	4	5	0	Hagar	4 10 0	Hebe	5 0 0	Narbo	..
12	4 ¹ / ₂	18	4 ¹ / ₂ × 3 ¹ / ₄	6 ¹ / ₂ × 5	5	0	0	Hakon	5 5 0	Hedwig	5 15 0	Nathan	..
13 ¹ / ₂	5 ¹ / ₄	20	4 ¹ / ₂ × 3 ¹ / ₂	7 × 5 ¹ / ₂	5	10	0	Halde	5 15 0	Hegar	6 5 0	Natter	..
15	6	23	6 ¹ / ₂ × 4 ¹ / ₄	8 × 6	6	0	0	Halma	6 5 0	Helga	6 15 0	Neckar	..
18	7 ¹ / ₄	28	7 ¹ / ₂ × 5	9 × 7	7	5	0	Hassan	7 10 0	Helm	8 0 0	Nelda	..
20	8	27	8 ¹ / ₂ × 6 ¹ / ₄	10 × 8	8	0	0	Hatto	8 5 0	Heliodor	8 15 0	Nenner	..
25	10	34	9 × 7	12 × 10	10	0	0	Hella
31	12	40	12 × 10	14 × 12	14	0	0	Hestia
37	14 ¹ / ₂	47	14 × 10	16 × 13	18	0	0	Honduras
44	17 ¹ / ₂	57	15 × 12	20 × 15	23	0	0	Horus
52	20 ¹ / ₂	67	18 × 12	20 × 18	30	0	0	Hulda
58	23	76	20 × 14	24 × 20	42	0	0	Hutten

Cost of pairing 2 Collinears for Stereoscopic Work is 8/-

SERIES IV.

Full Aperture,
F 12·5.



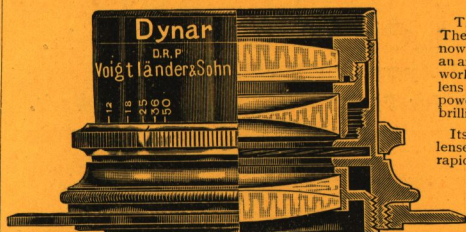
Wide-Angle Anastigmat for Architectural, Process Work, and Landscapes.

The Wide-angle Collinears give, with full aperture, a field of view of about 85°. When stopped down, 95°.

Equivalent Focus.		Diameter of Lens.	Size of Plate sharply covered.		Price.	Code Word.		
			F 12·5.	Stopped Down.				
cm.	ins.	mm.	ins.	ins.	£	s.	d.	
10	4	8	4½ × 3½	6½ × 4½	4	0	0	Kabale
12	4½	10	5½ × 4	7½ × 5	5	0	0	Kabul
15	6	12	6½ × 4¾	8½ × 6½	5	10	0	Kallias
20	8	16	8½ × 6½	10 × 8	6	0	0	Kandahar
25	9¾	21	9½ × 7	12 × 10	9	0	0	Kaste
32	12½	26	10 × 8	14 × 11	12	0	0	Kondor
44	17½	35	12 × 10	15 × 12	20	0	0	Konon
58	22½	46	15 × 12	24 × 18	30	0	0	Korfu
80	31½	65	16 × 14	28 × 22	45	0	0	Kuno

Sole Agent for Great Britain and Colonies, F. G. PHILLIPS.

Voigtländer 'Dynar' Lens.



The "Dynar" Lens aperture F 6. The construction of the "Dynar" Lens is now well known amongst amateurs requiring an anastigmat for hand or field camera use, working at a full aperture of F 6. This lens is noted for its great light transmitting power, uniformity of definition, and brilliancy of its pictures.

Its formula consists of three separate lenses so arranged as to obtain extreme rapidity, and is excellently adapted for rapid instantaneous exposures, while its extremely low price brings it within the reach of all serious amateurs.

The "Dynar" Lens can also be had to fit Kodak Cameras mounted in the

same way as the "Collinear" (see page 1073) at the following prices:—

For No. 3 F. P. Kodak "Dynar" F 6 125 m/m £4 0 0
For No. 3a F 6 163 m/m £4 15 0

Equivalent Focus.	Diameter of Lens.	Size of Plate sharply covered with full aperture.		Ordinary Mount.	Code Word.	Countersunk Mount.		Focussing Mount.	
		F 6.	Price.			Code Word.	Price.	Code Word.	
3/m.	ins.	m/m	ins.	£ s. d.		£ s. d.		£ s. d.	
12	4 ³ / ₈	21	4 ³ / ₈ × 3 ¹ / ₄	3 15 0	Dyn	4 0 0	Dyrein	4 10 0	Dynarch
13 ¹ / ₂	5 ¹ / ₈	24	5 ¹ / ₈ × 4	4 5 0	Dyro	4 10 0	Dyrocin	5 0 0	Dyroarch
15	6	26	6 × 4 ¹ / ₂	4 15 0	Dysis	5 0 0	Dysicin	5 10 0	Dysisarch
18	7 ¹ / ₈	32	7 × 5	6 0 0	Dytes	6 5 0	Dytescin	6 15 0	Dytesarch

The cost of pairing two "Dynars" for Stereoscopic Work is 8/-

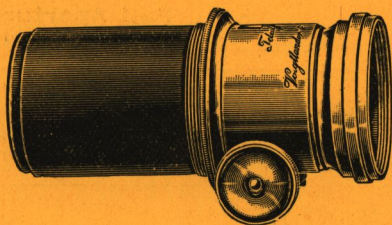
Voigtländer Telephotographic Lenses

Special Lenses and Cameras for Telephotography.

Every degree of magnification may be obtained, according to the distance the Lens is placed from the plate. The image is from three to four times as large as that obtained by an ordinary Lens of the same focus as the Camera extension. An image ten to twelve times larger than that of the Positive Lens alone, can be obtained sharply defined.

The Telephotographic Lens is recognised as forming an essential part of the Photographer's outfit, as it gives him—within certain limits—a considerable range of foci to make the subject as large as he chooses.

PRICES.—The cost of complete Telephoto Lenses may be found by adding the cost of the Positive Lens selected to that of the Telephoto Attachment.



TELEPHOTO ATTACHMENT.

No.	Price.
1	£4 0 0
2	4 0 0
3	4 5 0
4	4 15 0
5	5 10 0

Voigtländer

Portrait Lenses. SERIES Ia.

Full Aperture F 2.3.

Extra Rapid Objectives for Portraits & Cinematograph Work.

Equivalent Focus.		Diameter of Lens.		Diameter of Useful Field.		Size of Picture.	Price.			Code Word.
cm.	ins.	mm.		ins.			£	s.	d.	
8	3 $\frac{1}{4}$	36		1 $\frac{3}{8}$		Cinematograph	6	0	0	Adler
10	4 $\frac{1}{8}$	46		1 $\frac{5}{8}$		"	6	0	0	Agathe
15	6	64		2 $\frac{1}{4}$		C.D.V. Bust	8	0	0	Aller
20	7 $\frac{7}{8}$	84		2 $\frac{3}{4}$		C.D.V. f. length	12	0	0	Andora
30	11 $\frac{1}{2}$	128		4		Cabinet Bust	30	0	0	Argus

These objectives, from 8 cm. to 20 cm., are fitted with Iris Diaphragms, the 30 cm. has Waterhouse Diaphragms; price of extra set Waterhouse Diaphragms, 25/-

Portrait Lenses. SERIES I.

Full Aperture F 3.16.

Modified Petzval Lens. For Portraits and Projection.

Equivalent Focus.		Diameter of Lens.		Suitable for	Price.	Code Word.	Price of extra sets Waterhouse Diaphragms.
cm.	ins.	mm.			£ s. d.		£ s. d.
17	6 $\frac{3}{4}$	53	}	C.D.V. Bust and	6 0 0	Barbara	15 0
21	8 $\frac{1}{4}$	66		Children	9 0 0	Belisar	17 0
25	9 $\frac{1}{2}$	79		C.D.V. bust & full length	13 0 0	Bergamo	19 0
31	12	92		Cabinet	18 0 0	Beowulf	1 2 0
40	15	105		Boudoir	24 0 0	Bramarbus	1 5 0

All Portrait Lenses, Series I. are supplied with Waterhouse Diaphragms; the 17, 21 and 25 cm. are fitted with rack and pinion.

Sole Agent for Great Britain and Colonies, F. G. PHILLIPS.

*Voigtländer***Portrait Euryscope Lenses.****SERIES III. Full Aperture F 4.5.**

Equivalent Focus.		Diam. of Lens.	Size.	Price.	Code Word.	Price of a Set of Waterhouse Diaphragms.
cm.	ins.	mm.		£ s. d.		£ s. d.
17	6 $\frac{3}{4}$	40	C.D.V.	4 10 0	Cadmus	13 0
20	7 $\frac{3}{4}$	46	,,	5 10 0	Catalonien	14 0
22	8 $\frac{1}{2}$	53	,,	7 0 0	Catania	15 0
28	11	66	Cabinet	10 0 0	Ceder	17 0
35	13 $\frac{3}{4}$	79	,,	14 0 0	Centaur	19 0
40	16	92	Cab. & Boudoir	20 0 0	Certosa	1 2 0
51	20	105	,,	26 0 0	Cimon	1 7 0
66	26	135	{ Boudoir, Imperial, &c. }	47 10 0	Cibele	1 14 0

All these Lenses are supplied with a set of Waterhouse Diaphragms.

Voigtländer **Euryscope Lens.****SERIES IVA. Full Aperture F 7.**

Equivalent Focus.		Diameter of Lens.	Size of Plate covered. Stopped Down.	Price.	Code Word.
cm.	ins.	mm.	ins.	£ s. d.	
15	5 $\frac{3}{4}$	22	4 $\frac{3}{4}$ × 3 $\frac{1}{2}$	3 10 0	Dingo
18	7 $\frac{1}{8}$	27	6 $\frac{1}{2}$ × 4 $\frac{3}{4}$	4 4 0	Divan
20	7 $\frac{3}{4}$	30	7 $\frac{1}{2}$ × 5	4 16 0	Dolman
25	9 $\frac{3}{4}$	38	8 $\frac{1}{2}$ × 6 $\frac{1}{2}$	5 12 0	Dolus
30	11 $\frac{3}{4}$	46	9 × 7	6 18 0	Domina
36	14 $\frac{1}{4}$	55	10 × 8	8 12 0	Dorn
43	17	67	12 × 10	11 12 0	Duenna
50	19 $\frac{1}{2}$	77	14 × 11	16 10 0	Despina
66	26	104	15 × 12	26 0 0	Dessin
87	34 $\frac{1}{4}$	137	20 × 16	50 0 0	Dina

The Euryscope Lens for Universal use.

SEND FOR COMPLETE CATALOGUE OF PORTRAIT LENSES.

Send for Complete Catalogue to **12, Charterhouse St., Holborn Circus, London, E.C.**

Voigtländer

NEW MODEL

PRISM BINOCULARS

GIVING ENHANCED STEREOSCOPIC EFFECT.



The New Model Voigtländer Prism Binocular with enhanced stereoscopic effect has the advantage of a simplified wheel focussing adjustment, enabling any user to quickly focus it. For ladies this is particularly convenient.

This glass is also manufactured with the eyepiece focussing only, at a slightly lower price.

The Voigtländer Prism Binocular combines the highest optical and mechanical excellence, giving brilliant definition and exceptionally large field of view.

Insist upon seeing a Voigtländer before purchasing any other make.

PRICES COMPLETE IN LEATHER SLING CASE.

Magnifications.	Binoculars.			Monocular Form.		
	With wheel motion.			Without wheel motion.		
× 6 ...	£6	10	0	...	£6	0 0
× 6 large aperture	£8	0	0	...	£7 10	0
× 8 ...	£7	0	0	...	£6 10	0
× 8 large aperture	£9	0	0	...	£8 1)	0
× 10 ...	£7	10	0	...	£7	0 0
× 12 ...	£9	10	0	...	£9	0 0

Send for Complete Catalogue of Field Glasses, etc.