

THE  
PRODUCTS  
OF —  
THORNTON  
PICKARD LTD.

ALTRINCHAM.



# Terms of Business

**RETAIL ORDERS.** The prices in this Catalogue are strictly nett. It is respectfully requested that all orders be accompanied by remittance unless references have previously been given and an account opened.

**REMITTANCES.** Cheques or Post Office Orders to be made payable to the Thornton-Pickard Manufacturing Co., Limited, and may be crossed Lloyds Bank, Ltd. P.O. Orders should be made payable at Altrincham. Postage Stamps may be used for the payment of small amounts. Foreign Orders are payable by P.O. Orders at Altrincham, or by Draft on London or Manchester Bank.

**ACCOUNTS.** When credit ledger accounts are opened, statements are rendered for payment on the 15th day of each month.

**NEW ACCOUNTS.** In opening new accounts, remittance to be sent with first order together with Bankers' and Trade References.

**"ON APPROVAL."** All goods made by the Thornton-Pickard Manufacturing Co., Limited, may be obtained through any dealer in Photographic Apparatus or they will be sent direct, on "on approval" terms, if remittance for the amount accompanies order. The goods, if not approved, to be returned, carriage paid, within three days after receipt.

**REPAIRS.** Unless instructions to proceed forthwith are enclosed with goods sent for repair, an estimate of cost will be sent for confirmation.

**ELECTROS.** Electros of any of the Thornton-Pickard specialities are sent on application for inclusion in Dealers' Catalogues, at a nominal charge for each, according to size. Upon return of the blocks this charge is credited in full.

**CARRIAGE.** Carriage will be paid on all prepaid retail orders within the British Isles, and on Foreign prepaid retail orders to port of shipment. All small parcels are sent per parcel post, and larger ones by passenger train unless otherwise ordered.

**PACKING.** Experienced packers only are employed, and every care is taken to ensure safe transit. We do not, therefore, hold ourselves responsible for any loss or damage that may occur after the goods leave our premises. Packing boxes are charged at the lowest rate, and are not returnable.

## RUBBER MOULDING.

THORNTON-PICKARD  
PATENT.

Made in different  
thicknesses as shown.

Price **8d.** per foot, or any  
less quantity.

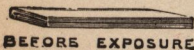


N<sup>o</sup> 1  $\frac{1}{16}$ " 2  $\frac{3}{32}$ " 3  $\frac{1}{8}$ " 4  $\frac{5}{32}$ " 5  $\frac{3}{16}$ " 6  $\frac{7}{32}$ " 7  $\frac{1}{4}$ " thick.

## EXPOSURE RECORDER. For DARK SLIDES or PLATE HOLDERS.

Price

**6d.**



Each.

Postage 1d.

Also supplied  
on Cards of Six,

Price 3/-

Postage 1d.

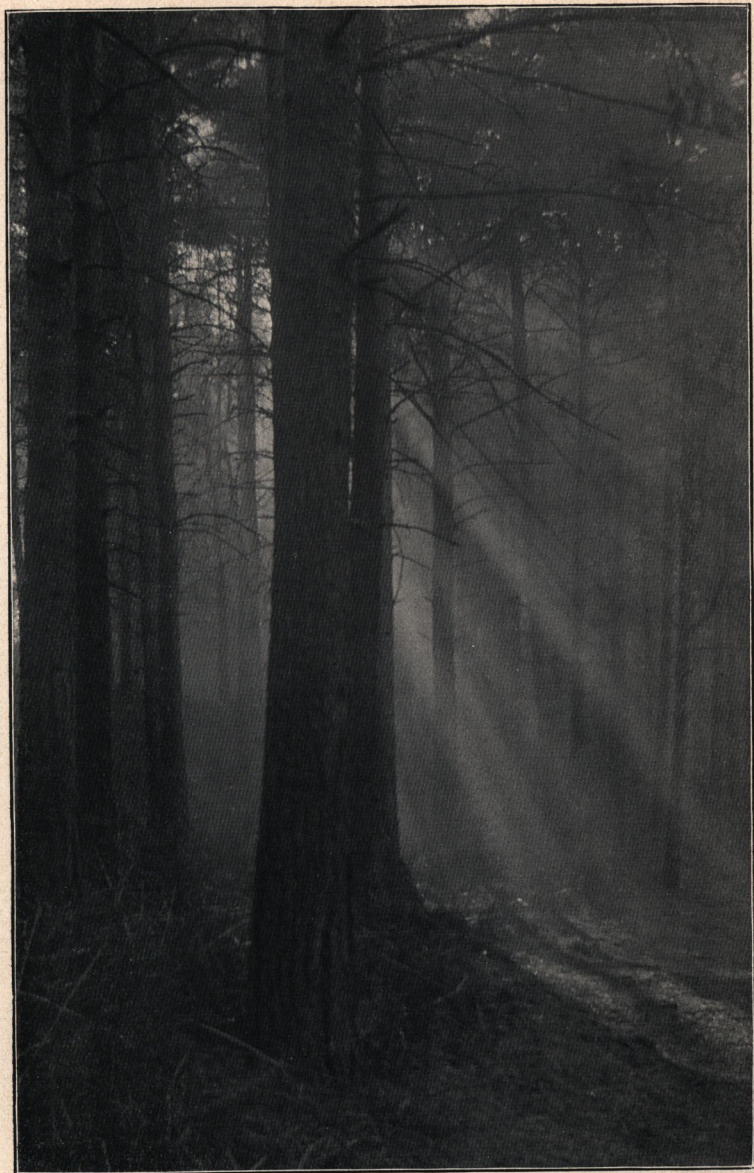


Shows at a glance which plates  
have been exposed. Prevents two  
pictures being taken on one plate.

This simple little device has  
proved a great success. It ought to  
be fitted to every Dark Slide and  
Plate Holder. It records automati-  
cally which plates have been ex-  
posed and which have not.

The Thornton-Pickard Manufacturing Co., Ltd.,  
ALTRINCHAM.





Exp. 2 Seconds.

"SUNBEAMS."

A. J. SNOW.

*Taken with T.-P. Time and Inst. Shutter.*



"ON THE BRINK."

MISS AGNES TOMLINSON.

*Taken with T.-P. Camera and Shutter, and  
T.-P. Ruby Anastigmat Lens, F6.5.*



**THORNTON-PICKARD****Time and Instantaneous Shutter.**

In every part of the civilised world the Thornton-Pickard Standard Pattern Time and Instantaneous Shutter is well known. It was the first successful Time and Instantaneous Shutter invented, and was in reality the one which made Instantaneous Photography practicable.

Instantaneous Exposures up to 1/90 second in the two smaller sizes. (Larger sizes work proportionately slower.)

Prolonged Time Exposures of any duration.

With the addition of the Patent Time Exposure Valve (3/6 extra), as shown near the ball in the illustration, the Shutter will also give automatically Short "Time" Exposures of  $\frac{1}{2}$ ,  $\frac{1}{3}$ ,  $\frac{1}{2}$ , 1, 2, and 3 seconds.

PRICES.	SIZE, to fit on a Lens Hood or Tube up to inches diam.								
	1½	1¾	2	2½	3	3½	4	4½	5
Before Lens.....	14/6	15/-	16/-	18/-	21/-	25/-	30/-	35/-	38/-
Behind Lens .....	15/6	16/-	17/6	19/6	22/6	26/6	31/6	36/6	39/6

Self-Capping Time and Instantaneous Shutter, sizes up to 2½in., 5/- Extra.

Patent Time Exposure Valve 3/6 Extra.

New Patent Disappearing Cord, which runs back into the Shutter Box after setting, 3/6 extra. Fitted to Shutters previously supplied 5/-.

**THE ALL BRITISH CAMERA MAKERS**

THORNTON-PICKARD

# ROYAL SHUTTER



## IMPROVED MODEL.

The chief advantages of the Royal over the standard pattern are that in the Royal Shutter all working parts are enclosed within the Shutter Box. It is also fitted with a new and patented device which automatically releases the Spring when the Shutter is set at "Time."

### PRICE LIST OF ROYAL SHUTTERS (Speed Indicator included).

SIZE:—To fit on Lens Hood or Tube, up to inches diameter.	1½	1¾	2	2½	3
Before Lens Model .....	21/-	22/-	23/-	25/-	28/-
Behind Lens Model .....	22/-	23/-	24/-	26/-	30/-

Patent Time Exposure Valve, 3/6 extra. Patent Disappearing Cord, 3/6 extra.

## THORNTON-PICKARD PATENT

# Time Exposure Valve.

For short time exposures.  $\frac{1}{8}$ ,  $\frac{1}{4}$ ,  $\frac{1}{2}$ , 1, 2, and 3 Seconds.

**PRICE:** Fitted to any new Thornton-Pickard Time and Inst. Shutter, or to any Time and Inst. Shutter sent to us for that purpose .....

**3/6** If the Shutter cannot be sent to us for fitting, we can supply the Valve complete with Arabesque Ball, Tube, and Teat .....

**5/6**

THE ALL BRITISH CAMERA MAKERS

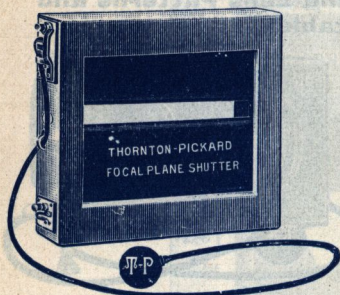






## THORNTON-PICKARD

# Focal Plane Shutters.



No. 1 Model Focal Plane.



No. 3 Model Focal Plane.

**EXPOSURES up to  $\frac{1}{1000}$  of a Second.**

Thornton-Pickard Focal Plane Shutters are made in four different models. The cheapest pattern is the No. 1 or Original Model, which is quite as efficient and practical as any Focal Plane Shutter made. In this Original Model the Blind Slit is adjusted by means of small chains, which have to be lengthened or shortened as required by the operator.

### THE Nos. 2 and 3 MODELS.

The Nos. 2 and 3 Models of Focal Plane Shutter are improvements upon the pattern above described. The Slit in the Blind of each of these Shutters is adjusted from the outside by simply rotating a knob. The principle of construction is different, but the two Shutters possess the same practical advantages, and are more convenient in use than the original No. 1 pattern.

**FOR FITTING.** The Reversing Back and a Dark Slide should be sent to us. A charge of from 5/- to 10/- is made, according to work required. The fitting is done gratis to current patterns of Thornton-Pickard Cameras.

**PRICES, including Speed Indicator and Speed Tablet.**

#### No. 1 OR ORIGINAL MODEL.

$4\frac{1}{2} \times 3\frac{1}{2}$ .. .. .	£1 5 0	$6\frac{1}{2} \times 4\frac{3}{4}$	£1 10 0	$8\frac{1}{2} \times 6\frac{1}{2}$	£1 15 0	$10 \times 8$ ..	£2 5 0
$5 \times 4$ & $9 \times 12$ c/m	£1 7 6	$7\frac{1}{2} \times 5$	£1 10 0				

#### No. 2 MODEL (With Outside Adjustments).

$5 \times 4$ & $9 \times 12$ c/m	£2 10 0	$10 \times 8$	£4 4 0	$12 \times 10$	£5 5 0	$9 \times 12$ c/m	£2 10 0	$18 \times 24$ c/m	£4 4 0
----------------------------------	---------	---------------	--------	----------------	--------	-------------------	---------	--------------------	--------

#### No. 3 MODEL (With Outside Adjustments).

$\frac{1}{2}$ -Plate ( $4\frac{1}{2} \times 3\frac{1}{2}$ ) ..	£2 5 0	$7\frac{1}{2} \times 5$ .. ..	£3 6 0	Whole Plate.	£3 10 0
$\frac{3}{8}$ -Plate ( $6\frac{1}{2} \times 4\frac{3}{4}$ ) ..	£2 15 0	$13 \times 18$ c/m. ..	£3 6 0		

**THE ALL BRITISH CAMERA MAKERS**



**THORNTON-PICKARD**

**NEW PATENT**  
**UNIT** SELF-CAPPING  
 TIME AND INST.  
**Focal Plane Shutter**



**EXPOSURES UP TO**  
**1**  
**1000**  
**of a Second.**

**Special Points of the UNIT Shutter.**

This Focal Plane Shutter has been named the **UNIT** owing to the fact that its adjustments are effected and the Shutter set **by one and the same operation**. This operation consists in simply turning the Winding Key, which effects the following movements:—

1. It sets the Shutter for exposure.
2. It automatically adjusts the Slit to the desired width.
3. It varies the duration of the exposure.
4. It alters the Shutter for Time and Instantaneous at will.
5. It maintains the aperture covered with the Self-capping Blind until the actual exposure.

Instantaneous Exposures from  $\frac{1}{15}$  th to  $\frac{1}{1000}$  th.

Time Exposures from seconds to hours, or of any duration.

Adjustable Slit with 6 different-sized Apertures.

Square Aperture Opening Shutter.

Automatic Self-capping Blind.

Automatic Self-adjusting Slit.

One Setting Key only.

No Lever to move to change from Time to Instantaneous, or vice-versa.

No complicated Mechanism.

Smooth free-working of Shutter.

Blind always perfectly taut. No sagging.

Blind sets and closes as straight as a metal plate.

Perfect combination of Simplicity and Efficiency.

One and the same operation of turning the Winding Key both sets the Shutter and varies the Speed.

$\frac{1}{4}$ -Plate ( $4\frac{1}{4} \times 3\frac{1}{4}$ ) ... .. **70/-**  
 5 x 4, 9 x 12 c/m & Postcard **77/6**

$\frac{1}{2}$ -Plate ( $6\frac{1}{2} \times 4\frac{1}{2}$ ) ... .. **84/-**  
 $7\frac{1}{2} \times 5$  &  $13 \times 18$  c/m **90/-**





## PRICE LIST

of the

Thornton-Pickard

# SHUTTER RELEASES

and

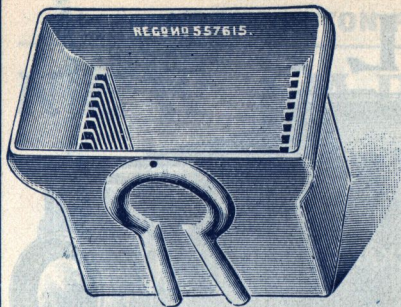
# Gas Tubing

The "Arabesque" Balls and Tubes, supplied by us, are all specially made from the best pure Para Rubber and are unequalled in quality and durability.

NO.		S. D.	
	<b>"Arabesque" Rubber Releases.</b>		
1	Standard Pattern "Arabesque" Round Ball, Tube, and Teat ..	2 0	
2	Between-Lens Shutter Oval Ball, Tube without Teat .. ..	1 9	
3	Small Size Oval Ball and Tube .. .. .	1 6	
4	Studio Shutter Release, Ball Tube and Bellows Teat .. ..	3 0	
	Tap .. .. .	1 0	
	"Arabesque" Shutter Tubing .. .. . per foot	0 6	
	"    Gas Tubing No. 1, $\frac{3}{16}$ in. bore, $\frac{1}{16}$ in. walls .. ..	0 8	
	"    "    "    No. 2, $\frac{3}{16}$ in. " $\frac{1}{16}$ in. " .. ..	0 10	
	"    "    "    No. 3, $\frac{3}{16}$ in. " $\frac{1}{16}$ in. " .. ..	1 0	
	"    Teats .. .. .	0 4	
	"    Studio Bellows Teats .. .. .	1 0	
	<b>Black and Red Rubber Releases.</b>		
5	Black Enamelled Rubber Ball Tube and Teat .. .. .	1 6	
6	Red Polished .. .. .	1 3	
7	"    "    small size Oval Ball and Tube .. .. .	0 9	
8	"    "    "    Round .. .. .	0 6	
9	Small Black Oval Ball and Tube .. .. .	1 0	
10	Large .. .. .	0 9	
11	Pocket Camera Shutter Release .. .. .	0 9	
	Shutter Release Tubing, black or red .. .. . per foot	0 3	
	Black and Red Teats .. .. .	0 3	
	Gas Tubing for Lanterns, black or red:—		
	No. 1, $\frac{5}{16}$ in. bore, 60ft. lengths, 13s. 6d. .. .. . per foot	0 3	
	No. 2, $\frac{1}{16}$ in. " 60ft. " 18s. .. .. .	0 4	
	No. 3, $\frac{3}{32}$ in. " 60ft. " 30s. .. .. .	0 7	
	<b>Large Sized "Arabesque" Round Balls.</b>		
	<b>DIAMETER.</b>	<b>WORKING CAPACITY.</b>	
0	1 $\frac{1}{2}$ in.	Ordinary Ball for 2ft. tubing .. .. .	1 0
1	1 $\frac{3}{4}$ in.	For Studio Shutter Release .. .. .	1 4
3	2 $\frac{1}{4}$ in.	For Tubing up to 30ft. long .. .. .	3 0
4	2 $\frac{1}{2}$ in.	"    "    50ft. .. .. .	4 0
6	3 in.	"    "    100ft. .. .. .	6 0

**We Specialize in Rubber Releases.**

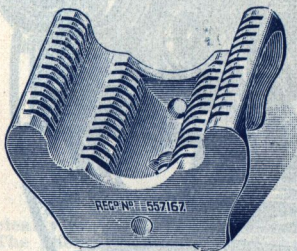




## The T.-P. MERITO WASHING TROUGH

Special Registered Design.  
Can be used for fixing as well as washing.  
Also supplied with Lid, thus forming a combined Developing, Washing, and Fixing Trough.  
Made in highly glazed Adamite Ware. Quarter-plate and Half-plate sizes.

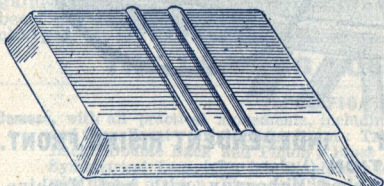
$\frac{1}{4}$ -Plate 4/-, with lid 5/-  
 $\frac{1}{2}$ -Plate 5/6, with lid 6/6



## THE T.-P. MERITO DRAINING RACK

Made in highly glazed Adamite Ware. Special Registered Design. Substantially constructed. Heavy, firm base, forming a sound foundation. No danger of tilting over when carrying plates. Easily accessible for placing plates in position. Useful for washing plates. Useful as a drying rack.

Takes 12 plates any size up to and including whole plate .. .. 1/6

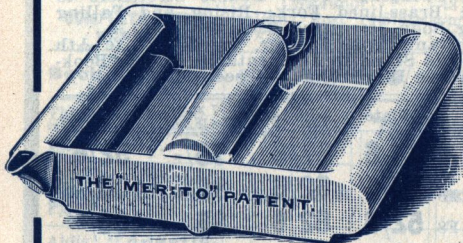


Registered No. 544114

## MERITO DEVELOPING DISH

With Rocking Bars.

PRICES (each).	
$\frac{1}{2}$ -plate .. ..	7d.   $\frac{1}{1}$ -plate .. 1/3
$5 \times 4$ .. ..	9d.   $10 \times 8$ .. 1/6
Postcard .. ..	9d.   $12 \times 10$ .. 2/6
$\frac{3}{4}$ -plate .. ..	1/-   $15 \times 12$ .. 5/-



## The Thornton-Pickard MERITO NON-SPLASH DEVELOPING DISH for PLATES & FILMS

The Cheapest Plate and Film Dish on the Market.

PRICES:  $\frac{1}{4}$ -plate 2/- each  
 $\frac{1}{2}$ -plate 3/6 each, complete

## MERITO DEVELOPERS.

MADE FROM PRIVATE FORMULÆ.

Beware of Worthless Imitations.

**Mentol-Quinol,**  
**Pyro-Soda,**  
**Hydrokinone,**

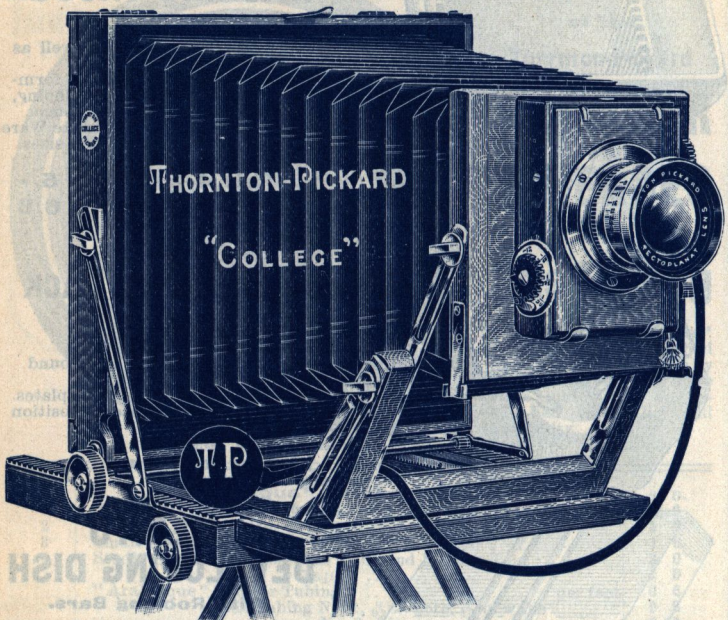
None Genuine without the Trade-Mark **MERITO.**

Each Packet makes 10 oz. Solution.

1/- per box ; 6 packets.  
1/- " " "  
1/- " " "



# COLLEGE



## RACKWORK FOCUSING BODY. INDEPENDENT RISING FRONT.

### SPECIFICATION ( $\frac{1}{2}$ -plate only).

**Camera.**—Made of beautifully polished Mahogany, with best Machine-finished Brass Fittings and Brass Turntable; Extremely Long Extension, with Extending and Swinging Front; Double Stretchers to Camera Back and Front; Brass-lined Fork; Rising and Falling Front; Rackwork Focussing Body, Reversing Back, etc., etc.

Thornton-Pickard Time and Instantaneous Shutter, Speeds  $\frac{1}{25}$ th to  $\frac{1}{50}$ th and Time Exposures. Two-fold Stand to fit Turntable, Double Book-form Slide, and Lens, with Iris Diaphragm, as specified.

PRICE LIST.	$\frac{1}{2}$ -Plate	$\frac{1}{2}$ -Plate	$7 \times 5$ $13 \times 18$ c/m	Whole-plate
With				
T.P. RECTOPLANAT LENS, F8 . . . . .	47/6	57/6	75/-	92/6
BECK RAPID SYMMETRICAL LENS, F8	52/6	62/6	85/-	100/-
T.-P. PANTOPLANAT LENS . . . . . F8	52/6	62/6	85/-	100/-
ALDIS ANASTIGMAT LENS, Series III., No. 7, F7.7, fitted to $\frac{1}{2}$ -plate, and $13 \times 18$	60/-	70/-	95/-	140/-
Extra Double Bookform Dark Slides, each . . . . .	5/6	7/-	9/-	12/-
Good Quality Waterproof Cloth Case, Pattern I . . . . .	2/6	3/6	5/-	5/6
Stiff Waterproof Cloth Case, Pattern L	3/6	5/-	7/-	7/6

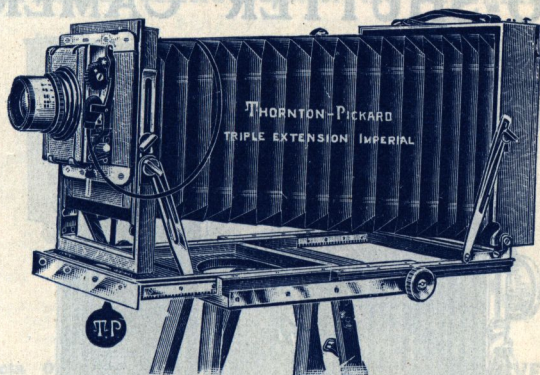
## THE ALL BRITISH CAMERA MAKERS

The Pantoplanat Lens having been reduced to the same price as the Beck Symmetrical, it will be supplied unless the other lens is specified.



## THORNTON-PICKARD

## NEW IMPERIAL



That the Imperial Outfit has filled a long-felt want has been clearly proved. Thousands have been sold, and the demand is increasing. The phenomenal success of the Imperial Triple Extension has been gained on the basis of sheer merit, and the photographic public have been quick to recognise the exceptional value offered for the price charged. It is recognised by Dealers and Photographers everywhere as

## THE LEADING LOW-PRICED SET.

## SPECIFICATION.

Camera, with all practical movements, including Triple Swing Back; Rising, Falling, and Cross Front; Triple Swing Front; Triple Extension; Short Focus; Reversing Back; Double Rack and Pinion; Brass Turntable; T.-P. Pantoplanat or Beck Symmetrical Lens, with Iris Diaphragm f.8; one Double Bookform Dark Slide with hinged division; Three-fold Stand; Thornton-Pickard Time and Instantaneous Shutter, with Speed Indicator.

COMPLETE OUTFIT with LENS.	$\frac{1}{4}$ -plate $4\frac{1}{2} \times 3\frac{1}{2}$	$5 \times 4$ and Post Card	$\frac{1}{2}$ -plate $6\frac{1}{2} \times 4\frac{1}{2}$	$13 \times 18$ c/m and $7 \times 5$	$1/1$ plate $8\frac{1}{2} \times 6\frac{1}{2}$	$10 \times 8$ and $18 \times 24$ c/m	$12 \times 10$ and $24 \times 30$ c/m
Beck Symmetrical	67/6	70/-	75/-	90/-	117/6	210/-	245/-
Thornton - Pickard "Panto-planat" F/8	67/6	70/-	75/-	90/-	—	—	—
Thornton - Pickard "Recto-planat" F/8	65/-	67/6	70/-	90/-	110/-	210/-	—
Aldis "Anastig- mat," III., F7.7	85/-	85/-	85/-	125/-	160/-	—	—
Teak OVERSEAS Imperial				Half- plate	95/-	Whole- plate,	147/6

Extra Slides for Standard Imperials, Cases, &c., as on page 201.

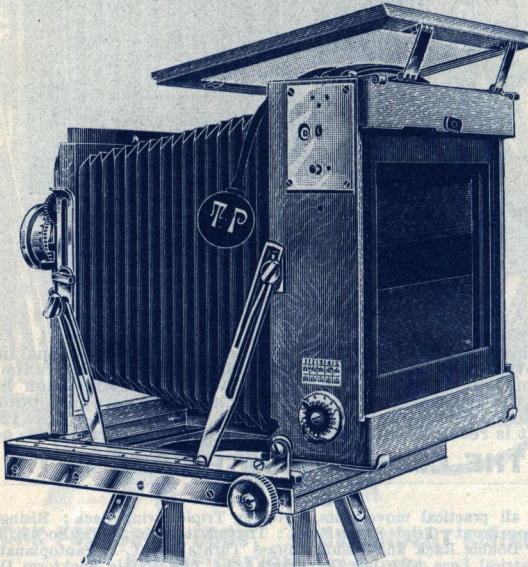
## THE ALL BRITISH CAMERA MAKERS

The Pantoplanat Lens having been reduced to the same price as the Beck Symmetrical, it will be supplied unless the other lens is specified.



THORNTON-PICKARD

# FOCAL PLANE IMPERIAL TWO-SHUTTER CAMERA.



**EXPOSURES UP TO  $\frac{1}{1000}$ th OF A SECOND**

This Camera, which is sold as a Complete Outfit, is generally similar to the Imperial Triple Extension Outfit as described on page 199, but with the addition of a Special pattern Focal Plane Shutter built in the Camera body.

The Focal Plane Shutter has three apertures—one full width of the plate for Focussing purposes; the second about  $1\frac{1}{4}$  inches wide, for slow and medium Instantaneous Exposures; and the third one is a narrow slit for High Speed Instantaneous Exposures up to  $\frac{1}{1000}$ th second. Outside Indicators and Speed Tablet show at a glance the requisite combination of spring tension and Slit for any given exposure. The great range of speeds from "Time" to  $\frac{1}{1000}$ th second renders this Camera suitable for any class of subject.

**SPECIFICATION.** Exactly as on page 199, but with the addition of Focal Plane Shutter built in the Camera body, Half-Plate size, with Beck Lens or T.P. Panto-planat

**110/-**

**OUTFIT with T.P. Ruby Anastigmat Lens F6·8 ... 190/-**

**OUTFIT with Cooke Anastigmat Lens, F7·7 ... 160/-**

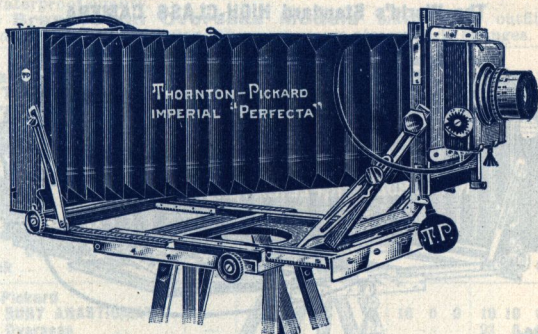
**THE ALL BRITISH CAMERA MAKERS**



## THORNTON-PICKARD

## PERFECTA

TRIPLE EXTENSION CAMERA OUTFIT.  
The Principal Camera Outfit of the IMPERIAL Series.



Perfecta Outfit, as below, but  
with T.-P. "RUBY ANASTIGMAT"  
Lens, F/6.8.

$\frac{1}{2}$ -Plate .. .. .	£9 0 0
$\frac{1}{4}$ -Plate .. .. .	£13 10 0
13x18 c/m.. .. .	£10 16 0

PERFECTA Outfit, large sizes,  
with Beck Symmetrical Lens with  
Iris Diaphragm F/8.

10x8 and 18x24 c/m ..	£12 0 0
12x10 and 24x30 c/m ..	£14 15 0

## PRACTICAL MOVEMENTS.

Triple Extension,  $\frac{1}{2}$ -pl., 22".  $\frac{1}{4}$ -pl., 28"  
Short Extension.  
Three Racks and Pinions.  
RACKWORK FOCUSING BODY.  
Rising, Falling, and Cross Front.  
Independent Rising Front, operated  
by Rack and Pinion.  
Modified "OMNIFLEX" Swinging  
and Extending Front.  
Swing Back, Forward, Backward, and  
Side Swing.  
Reversing Back.  
Lens convertible for Long Focus  
Views.

## SPECIFICATION AND PRICES.

TRIPLE EXTENSION CAMERA, with all movements as above, including  
"Omniflex" Swinging Front, Brass Turntable; Lens as specified,  
with Iris Diaphragm, Double Bookform Dark Slide, with hinged  
division; Three-fold Stand; Thornton-Pickard Time and Instan-  
taneous Shutter, with Speed Indicator. Camera fitted with Real  
Leather Bellows.

Outfit with Lens.	Series	Aper- ture.	$\frac{1}{2}$ -plate.	13x18 c/m.	$\frac{1}{4}$ -Plate.
Outfit as above, with Beck Symmet- rical Lens .....	III.	F7.7	£5 0 0	£6 6 0	£7 7 0
With T.-P. Pantoplanat .....	—	F8	5 0 0	6 6 0	7 7 0
„ T.-P. Ruby Anastigmat .....	—	F6.8	9 0 0	10 16 0	13 10 0
„ Beck Isostigmat .....	III.	F7.7	7 0 0	8 6 0	10 5 0
„ Ross Homocentric .....	III.	F6.3	10 0 0	12 16 0	16 0 0
„ Dallmeyer Stigmatic .....	IV.	F6.3	8 15 0	11 11 0	14 5 0
„ „ „ .....	II.	F6	12 12 6	16 6 0	20 0 0
„ Zeiss Protar .....	VIIa	F6.3	13 14 0	17 0 0	21 2 0
„ Voigtlander Collinear .....	II.	F5.4	13 10 0	14 16 0	21 10 0
„ Goerz Dagor .....	III.	F6.8	11 15 0	14 11 0	17 0 0
Extra Slides, each .....			8 6	10 6	14 6
Carrying Case, K .....			9 0	10 6	11 6
Time Exposure Valve to Shutter .....			3 6	3 6	3 6

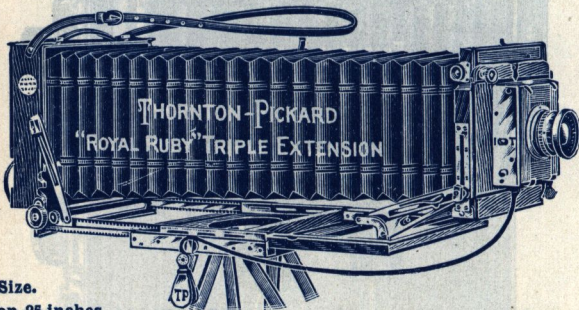
## THE ALL BRITISH CAMERA MAKERS

The Pantoplanat Lens having been reduced to the same price as the Beck Symmetrical, it will be supplied unless the other lens is specified.



**THORNTON-PICKARD****THE THORNTON-PICKARD PATENT****ROYAL RUBY**

The World's Standard HIGH-CLASS CAMERA.

 $\frac{1}{2}$ -Plate Size.

Extension 25 inches.

Represents the greatest achievement in the Art of Camera Construction.

The ROYAL RUBY is best known as the

**KING OF CAMERAS**

It is difficult to give here an adequate conception of what this Camera really is ; suffice it to say that it is the best production of the *Best British Camera Makers*, and is strongly recommended to all in search of the finest all-round Camera procurable. The prices are, for such an Outfit, very moderate, and no purchaser can experience anything but the greatest pleasure and satisfaction in acquiring a "Royal Ruby."

A few of its most salient features are enumerated below.

"Omniflex" Extending and Swinging Front.

Triple Extension Baseboard and Bellows.

Considerable rise to front.

Fall to front.

Independent Rack and Pinion Rise to front panel at shortest focus.

Independent Rack and Pinion Fall to front panel at shortest focus.

Rack and Pinion Cross Front Movement.

Short Focus Movement at front of Camera; no protruding baseboard, no cutting off.

Improved pattern Folding Front, locking automatically in position.

Rising Front, brassbound on sides, preventing wear and tear.

Triple Swing to Front, Backward, Forward, and Independent Swing.

Triple Swing to Back, Backward, Forward, and Side Swing.

Automatic Spring Stretchers to Front and Back.

A greater range of movements, with greater latitude than any other Camera made.

SEE PRICE LIST PAGE 203.

STANDARD and OVERSEAS (TEAK) Patterns.

**THE ALL BRITISH CAMERA MAKERS**



## THORNTON-PICKARD ROYAL RUBY TRIPLE EXTENSION OUTFITS.

With various makes of Lenses.

Two qualities of Cameras are listed below, viz., the Standard Pattern Mahogany and the Overseas pattern. The **Overseas** Model is in all respects similar to the Standard Pattern Camera, but it is built of **Seasoned Teak** throughout, a wood expressly selected for its damp and heat resisting qualities. Every joint is specially strengthened by being screwed as well as glued, and the glue used is of special waterproof quality.

The **Brassbound Overseas Models** make ideal outfits for any climate, and will easily withstand the most severe atmospheric changes.

### SPECIFICATION.

Camera with Turntable, Threefold Automatic English Ash Tripod,  
Royal Time and Inst. Shutter with Speed Indicator, Best Quality Double  
Bookform Dark Slide with hinged metal Division, and Lens as per list.

### SIZES AND PRICES OF OUTFITS.

Outfit with Lens.	Series	Largest aperture	Half-plate 6½×4½	7¼×5 13×18 c/m	Wh'f-plate 8¼×6¼	10×8 18×24 c/m
Thornton-Pickard PANTOPLANAT Do. Overseas, made in Teak .. .. .	—	F 8	10 10 0	12 10 0	15 0 0	18 10 0
Thornton-Pickard RUBY ANASTIGMAT .. Do. Overseas .. .. .	—	F 6·8	13 15 0 15 0 0	16 0 0	19 10 0 21 5 0	22 10 0
Beck ISOSTIGMAR .. .. . Do. Overseas .. .. .	III	F7·7	11 15 0 13 0 0	14 15 0	16 5 0 18 0 0	—
Beck ISOSTIGMAR .. .. . Do. Overseas .. .. .	II	F5·8	12 17 6 14 2 6	15 15 0	—	—
Ross HOMO-CENTRIC .. .. . Do. Overseas .. .. .	III	F6·3	14 15 0 16 0 0	18 0 0	22 0 0 23 15 0	27 0 0
Voigtlander COLLINEAR .. .. . Do. Overseas .. .. .	II	F5·4	18 5 0 19 10 0	20 0 0	27 10 0 29 5 0	41 10 0
Aidis ANASTIGMAT .. .. . Do. Overseas .. .. .	½-plate Series II. F6 13×18 c/m & 1/1 pl. Series III. F7·7		13 2 6 14 7 6	13 5 0	15 10 0 17 5 0	—
Cooke ANASTIGMAT .. .. . Do. Overseas .. .. .	III	F6·5	14 17 0 16 2 0	17 3 0	21 4 0 22 19 0	27 8 6
Dallmeyer STIGMATIC .. .. . Do. Overseas .. .. .	IV	F6·3	13 10 0 14 15 0	16 15 0	—	—
Dallmeyer STIGMATIC .. .. . Do. Overseas .. .. .	II	F6	17 7 6 18 12 6	21 10 0	26 0 0 27 15 0	33 0 0
Goerz DAGOR .. .. . Do. Overseas .. .. .	III	F6·8	16 10 0 17 15 0	19 15 0	23 0 0 24 15 0	29 15 0
Zeiss PROTAR .. .. . Do. Overseas .. .. .	VII.A	F6·3	18 9 0 19 14 0	22 3 0	27 2 0 28 17 0	40 7 0
LACOUR BERTHIOT Eurygraphe .. Do. Overseas .. .. .	II.B	F6·2	15 0 0 16 5 0	16 15 0	19 0 0 20 15 0	23 5 0

Camera and Slide BRASSBOUND	}	Standard and Overseas Patterns ..	25/-	35/-	35/-	40/-
--------------------------------	---	--------------------------------------	------	------	------	------

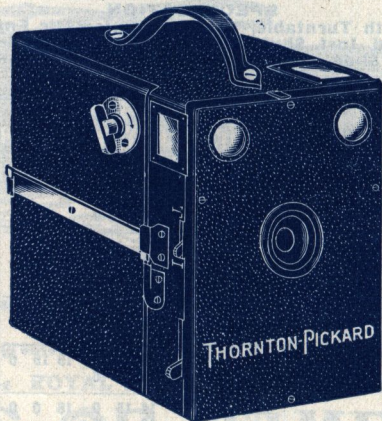
Extra Bookform MAHOGANY Slides .. each	17/6	20/-	22/6	30/-
Do. TEAK do. .. each	22/6	25/-	27/6	35/6
BRASSBINDING to either pattern.. .. each	5/-	5/-	5/-	5/6



## THORNTON-PICKARD

# The FILMA

DAYLIGHT LOADING FILM CAMERA.



Any Standard  
make of Film  
is suitable.

**SIZES:**  
**A**— $3\frac{1}{4} \times 2\frac{1}{4}$   
**B**— $4\frac{1}{4} \times 2\frac{1}{2}$   
**C**— $4\frac{1}{4} \times 3\frac{1}{4}$   
**D**— $3\frac{1}{2} \times 3\frac{1}{2}$

**LIKE ALL T.-P. CAMERAS—BRITISH MADE THROUGHOUT.**

The Filma is the first of the new series of T.-P. Box-form Daylight Loading Film Cameras. Made in five patterns and four sizes.

A takes pictures  $3\frac{1}{4} \times 2\frac{1}{4}$ , B  $4\frac{1}{4} \times 2\frac{1}{2}$ , C  $4\frac{1}{4} \times 3\frac{1}{4}$ , D  $3\frac{1}{2} \times 3\frac{1}{2}$ .

Undoubtedly the most superior cameras of their type on the market.

### SPECIFICATION.

**Camera.**—Selected Kiln-dried Timber; Metal Fittings, Oxydised and Nickel-plated; Nickel-plated Automatic Safety Lock Plate, with safety catches; Nickel-plated Free-wheel Spool-winding Key; Camera Body with Spool Chamber lifts right out for loading and unloading; covered with Waterproof Leather Cloth.

**Lens.**—Thornton-Pickard Single Achromatic, of fine covering power and brilliant definition; three Sliding Lens Stops.

**Shutter.**—Automatic Everset Time and Inst. Exposures.

**Finders.**—Two True Brilliants, for vertical and horizontal pictures.

### PRICES.

A	B	C	D
<b>10/-</b>	<b>12/6</b>	<b>17/6</b>	<b>21/-</b>

Waterproof Case with Shoulder Strap—A 1/9; B, C, and D, 2/-.

The Filma de Luxe is of superior make and finish, and in one size—the quarter-plate—only.

The camera is beautifully covered in real Morocco leather, and is unquestionably the finest pattern of Box-form Roll-film Camera on the market.

**32/6**

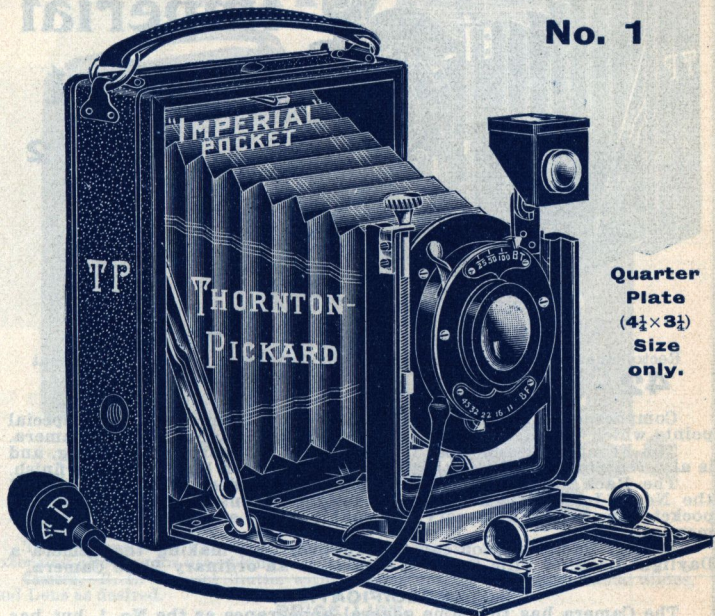
**THE ALL BRITISH CAMERA MAKERS**



THORNTON-PICKARD

# IMPERIAL POCKET CAMERA

No. 1



Quarter  
Plate  
(4½×3½)  
Size  
only.

The New Imperial represents the supremacy of value in Pocket Cameras. It is unquestionably superior to all cameras of its type at similar prices. The front is of exceptional strength and rigidity.

### SPECIFICATION.

**Camera.**—Mahogany Body, covered with waterproof leatherette, Base-board of strong aluminium, finished dull silver. Front cold drawn from solid metal, and oxydised dull black, it is both stronger and lighter than brass castings. Continuous extension base, making opening and closing extremely easy. Rising and Falling Front of great latitude, operated by fine screw motion.

**Leather Bellows** of good quality. Leather carrying handle.

**Shutter.**—Ever set, Time, Bulb, and Instantaneous, finished black.

**Metal Slides (two).**—Very thin, each carrying one plate.

**Focussing Screen.**—Detachable, fitted with Focussing Hood.

**Focussing Scale and Pointer** from infinity to five feet.

**Single Achromatic Lens, F11.**

30/-

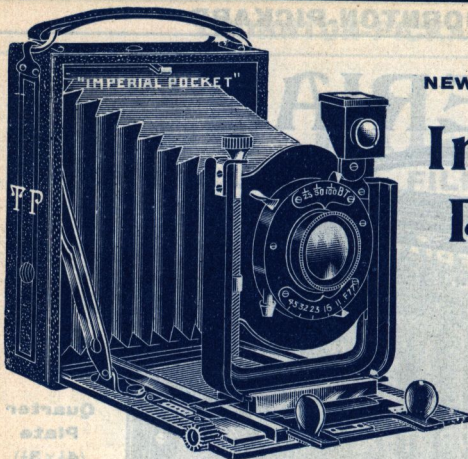
Same Camera Outfit with Rectoplanat Double Rectilinear Lens, F8 and B. L. Variable Speed Shutter

37/6

Extra Single Slides, each 1/6 Black Leather Case, 8/-.  
Daylight Loading Film Pack Adaptors . . . . . 5/6

**THE ALL BRITISH CAMERA MAKERS**





NEW 1912 PATTERN

# Imperial Pocket

No. 2

 $\frac{1}{4}$ -PLATE.

Rectoplanat Aldis Anastigmat  
**42/- 57/6**

POSTCARD.

Rectoplanat Aldis Anastigmat  
**70/- 90/-**

Compactness with Rigidity, Lightness with Efficiency, are the special points which we have kept to the front in the designing of this Camera.

The Front Fork and Base in which it slides is extremely strong, and is also reasonably light, with a beautifully smooth black oxydised finish.

The Rack and Pinion Focussing is a very decided advantage, and the No. 2 Imperial with Aldis Anastigmat Lens make a really fine pocket Camera Set at a very reasonable price, and can be well recommended.

A Film Pack Adaptor can be supplied, thus making the Camera a Daylight Loading Film Camera, as well as an ordinary Plate Camera.

### SPECIFICATION.

The Camera has the same general appearance as the No. 1, but has a Rack and Pinion Focussing Movement.

B. L. Everset Shutter with Time, Bulb, and Variable Speeds.

Lens as specified.

### PRICES.

		$\frac{1}{4}$ plate	9x12 c/m	P.C. and 10x15 c/m	
		B.L. Shutter.	B.L. Shutter	B.L. Shutter.	
With T.P. Rectoplanat	F8	£2 2 0	£2 12 6	£3 10 0	
" Aldis Anastigmat	F7.7	2 17 6	3 7 6	4 10 0	
" T.P. Ruby Anastigmat	F6.8	5 7 0	6 7 6	7 2 6	
" Aldis Anastigmat	F6	3 10 0	4 9 6	4 15 6	
" Dallmeyer Stigmatic	F6.3	4 17 0	5 17 6	6 12 6	
" Dallmeyer Stigmatic	F6	7 12 0	9 2 6	9 17 6	
" Beck Isostigmat	F7.7	3 15 0	4 9 6	5 5 0	
" Cooke Anastigmat	F6.5	5 19 0	6 19 0	7 14 6	
" Goerz Dagor	F6.8	7 2 0	8 12 6	9 7 6	
" Goerz Syntor	F6.8	5 2 0	6 2 6	6 17 6	
" Voigtlander Collinear	F6.8	6 17 0	8 7 6	9 2 6	
" Zeiss Tessar	F4.5	8 7 0	8 17 6	9 12 6	
" Lacour Berthiot Eurygraphe	F6	6 12 0	7 2 0	7 17 6	
					Outfit with
					Koiles Shutter .. £1 0 0 extra
					Compound Shutter .. £1 5 0 extra
<b>ACCESSORIES.</b>					
Extra Single Slides, each		1/6	2/-	2/-	
Daylight Loading Film Pack Adapters		5/6	6/6	6/6	
Black Leather Case		6/-	8/-	8/-	



**THORNTON-PICKARD**

**IMPERIAL POCKET CAMERA**

**No. 3**



**SPECIFICATION.**

The Camera is built on the same general lines as No. 2, but has a much longer extension allowing for use of long focus lenses.

Camera.—B. L. Everset Shutter with variable speeds, two Single Metal Slides, and Lens as desired.

**PRICE LIST.**

		$\frac{1}{4}$ Plate			Outfit with Koilos Shutter .. £1 0 0 extra Compound Shutter .. £1 5 0 extra
		B.L. Everset Shutter	B.L. Everset Shutter	B.L. Everset Shutter	
		9×12 c/m.	P.C. and 10×15 c/m		
<b>T.-P. Rectoplanat Lens</b> .. .. .	F8	£2 17 6	£3 10 0	£4 4 0	
<b>Aldis Anastigmat</b> .. .. .	F7.7	3 12 6	4 7 6	5 4 0	
<b>T.-P. Ruby Anastigmat</b> .. .. .	F6.8	5 17 6	7 5 0	7 16 6	
<b>Dallmeyer Stigmatic</b> .. .. .	F6.3	5 12 6	6 15 0	7 6 6	
<b>Dallmeyer Stigmatic</b> .. .. .	F6	8 7 6	10 0 0	10 11 6	
<b>Aldis Anastigmat</b> .. .. .	F6	4 5 0	5 7 6	5 19 0	
<b>Beck Isostigmat</b> .. .. .	F7.7	4 10 0	5 7 6	5 19 0	
<b>Cooke Anastigmat</b> .. .. .	F6.5	6 14 6	7 17 0	8 8 6	
<b>Coerz Dagor</b> .. .. .	F6.8	7 17 6	9 10 0	10 1 6	
<b>Coerz Syntor</b> .. .. .	F6.8	5 17 6	7 0 0	7 11 6	
<b>Voigtlander Collinear</b> .. .. .	F6.8	7 12 6	9 5 0	9 16 6	
<b>Zeiss Protar</b> .. .. .	F6.3	10 7 6	11 0 0	11 11 6	
<b>Zeiss Tessar</b> .. .. .	F4.5	9 2 6	9 15 0	10 6 6	
<b>Lacour Berthiot Eurygraphe..</b>	F6	7 7 6	8 0 0	8 11 6	

**ACCESSORIES.**

Single Slides, $\frac{1}{4}$ plate 1/6, 9×12 & P.C..	£0 2 0	Metal Tripod (No. 1A) ..	£0 6 6
Leather Case .. .. .	0 6 0	Do. (No. 1) ..	0 9 0
Film Pack Adapter, $\frac{1}{4}$ plate 5/6. 9×12		Do. (No. 2) ..	0 12 6
and P.C. .. .. .	0 6 6	Do. (No 3) ..	1 5 0

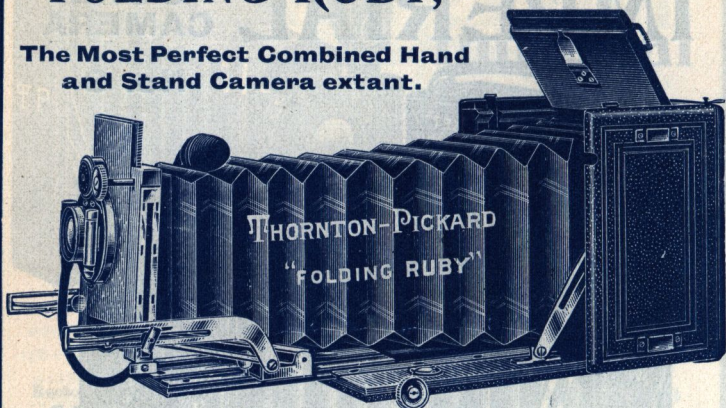
**THE ALL BRITISH CAMERA MAKERS**



## THORNTON-PICKARD

# FOLDING RUBY, Nos. 1, 2 & 3

The Most Perfect Combined Hand  
and Stand Camera extant.



The Folding Ruby is possessed with all the movement necessary for the most difficult and intricate work, and yet can be used by the novice for the simplest classes of photography.

### OMNIFLEX RISING, FALLING, SWINGING, AND EXTENDING FRONT.

#### SPECIFICATION AND PRICES, No. 1 "FOLDING RUBY" OUTFIT.

"FOLDING RUBY" HAND CAMERA, with movements as above. Best Selected Mahogany, beautifully polished internally, with handsome machine-made highly-finished Brass Fittings, covered externally with Real Seal-Grained Morocco Leather, fitted with Leather Carrying Case.

**SHUTTER.** New Pattern B. L. Everset Shutter, giving variable Instantaneous Exposures up to 1/100th sec., as well as "Time" and "Bulb" Exposures. Fitted with Pneumatic and Finger Releases.

**PLATEHOLDERS.** Three Plateholders of new design, with Spring Light Traps and Aluminium Shutters.

**BRITISH FINDER,** for Vertical and Horizontal Pictures.

**SPIRIT LEVEL.**

**LENS.** Beck Rapid Symmetrical, with Iris Diaphragm, F/8.

$\frac{1}{4}$  Plate ... .. £5 5 0 | 5×4 & 9×12c/m ... £6 0 0

### FOLDING RUBY, No. 2.

**SPECIFICATION.**—As above, but with Rack and Pinion Movement to Rising and Falling Front, Auxiliary Racking Baseboard for Short Focus Lens. B. L. Automatic Shutter, speeds,  $\frac{1}{100}$  sec. to 1 second; time and bulb exposures. Three Double Bookform Slides. Beck Double Aplanat Convertible Lens, F7.7.

$\frac{1}{4}$  Plate, £6 10 0 | 5×4×9 & 12, £7 10 0 | P.C., £8 10 0 |  $\frac{1}{2}$  Plate, £10 10 0

### FOLDING RUBY No. 3. Model De Luxe.

**SPECIFICATION.**—Same general Specification as No. 2 Outfit above, but Camera fitted with Universal Swing Back and Revolving instead of Reversing Back, which allows slide to be changed from vertical to horizontal, or vice versa when in position. B. L. Automatic Shutter, Three Double Bookform Slides, Bright Finder, Spirit Level, and Beck Double "Aplanat" Convertible Lens, F7.7.

$\frac{1}{4}$  Plate .. £8. 0. 0. | 5×4 .. £9. 0. 0. |  $\frac{1}{2}$  Plate .. £12. 0. 0

**THE ALL BRITISH CAMERA MAKERS**



## THORNTON-PICKARD

## FOLDING RUBY UNIT



The Folding Ruby Unit is made in one pattern, and in all sizes from  $\frac{1}{4}$ -plate to  $\frac{1}{2}$ -plate. It is similar in general features to the No. 2 Folding Ruby, with the addition of the Unit Time and Instantaneous Focal Plane Shutter built in the body. The Photographer equipped with the Folding Ruby Unit Camera will be provided with the most perfect apparatus for work of every class, for not only will the Shutter give every variety of exposure, but the Camera also gives every practical movement the Photographer can require.

One great advantage of the Unit Shutter built in the Camera body is that it does away with the use of the various inefficient types of between-lens shutters, and provides instead the most simple and efficient form of shutter it is possible to design. It also leaves the lens board free for the fitting of the lens only, and that in its original rigid Iris mount.

## SPECIFICATION AND PRICE LIST.

In every detail these Outfits are similar to the Folding Ruby No. 2, as listed on page 208, with the addition of Unit Focal Plane Shutter embodied (see page 195).

OUTFIT WITH LENS	Standard Pattern—Mahogany, Leather Covered				
	LENS.		$\frac{1}{4}$ -Plate	5×4 and	$\frac{1}{2}$ -Plate
	Series	Aper- ture	$4\frac{1}{2} \times 3\frac{1}{2}$	9×12 c/m. Postcard $5\frac{1}{2} \times 3\frac{1}{2}$	$6\frac{1}{2} \times 4\frac{1}{2}$
Thornton-Pickard Ruby Anastigmat .. .. .	—	F6·8	£13 5 0	£15 12 6	£18 5 0
Dallmeyer Stigmatic .. .. .	II.	F6	16 5 0	18 12 6	21 17 6
Beck Isostigmat .. .. .	II.	F5·8	12 12 6	15 5 0	17 7 6
Aldis Anastigmat .. .. .	II.	F6	11 12 6	14 0 0	17 12 6
Cooke Anastigmat .. .. .	II.	F4·5	14 19 6	17 7 0	20 7 6
Voigtlander Collinear .. .. .	II.	F5·4	16 0 0	18 12 6	22 15 0
Goerz Dagor .. .. .	III.	F6·8	15 15 0	18 2 6	21 0 0
Goerz Celor .. .. .	—	F4·8	16 0 0	18 7 6	21 0 0
Zeiss Protar .. .. .	VII.A	F6·3	17 5 0	21 1 6	22 19 0

THE ALL BRITISH CAMERA MAKERS

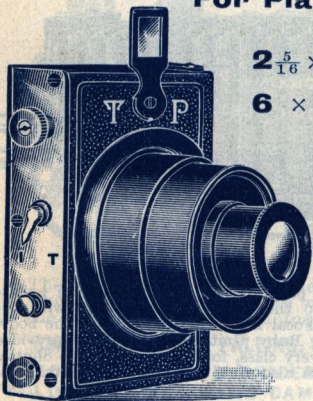


THORNTON-PICKARD

# The LIMIT

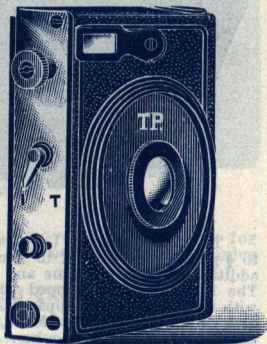
## FOCAL PLANE VEST POCKET CAMERA

For Plates or Films



$2\frac{5}{16} \times 1\frac{3}{4}$  in.

$6 \times 4\frac{1}{2}$  c/m.



## Something Absolutely New.

**A Combination Camera for Plates or Daylight Loading Flat  
Films with Film Pack Adaptor.**

The Limit, as its name suggests, surely reaches the limit of compactness and portability in a folding vest-pocket camera.

It is the absolute personification of efficiency and simplicity.

It is unique both in style and size, and the most useful novelty that has been produced for years.

The veriest novice cannot fail to obtain photographs with the Limit, the method of operating being so very simple.

To open the camera, draw out the cones to their limit.

To set the shutter, turn the winding knob at the top of the camera to its limit, release by pressing the release knob to its limit.

To close the camera, press the lens and cones inwards to their limit.

**THE ALL BRITISH CAMERA MAKERS**



**THORNTON-PICKARD**

# The LIMIT

## FOCAL PLANE VEST POCKET CAMERA

**SPECIFICATION AND PRICES.**

**Camera.**—Made of metal throughout, suitable for any climate. No bellows, therefore practically imperishable.

**Shutter.**—Focal Plane, Time and Instantaneous. Time Exposures of any duration; Instantaneous Exposures.

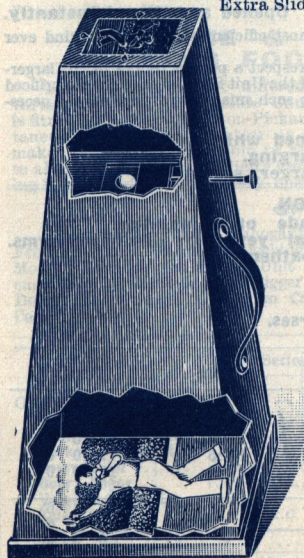
**Lens.**—T.-P. Single Achromatic on No. 1; T.-P. Pantoplanat No. 2.

**Slides.**—Single metal, one with outfit.

**Leather Purse** to carry camera and slide.

Camera with Lens.	Price.
No. 1.—T.P. Single Achromatic ... ..	<b>35/-</b>
No. 2.—T.P. Pantoplanat ... ..	<b>45/-</b>
No. 3.— <b>Cooke Anastigmat F6.5</b> ... ..	<b>110/-</b>

Extra Slides, **1/6** each; Film Pack Adapter, **5/6**.



## The LIMIT Enlarger

The Limit Enlarger enables the users of Limit, Minim, and other cameras taking plates  $2\frac{5}{16} \times 1\frac{3}{4}$  to enlarge their negatives to postcard size with a minimum of trouble.

The instrument is of fixed focus, and will give sharp crisp enlargements.

Light but strongly constructed with lens, shutter, and carrying handle.

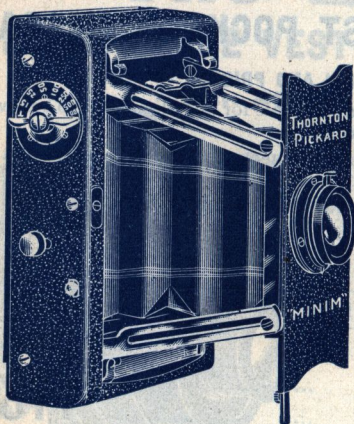
Complete **8/6**

**THE ALL BRITISH CAMERA MAKERS**



## THORNTON-PICKARD

# Vest Pocket MINIM



**Minim Erected.  
Half-size.**

The Minim is the most perfect and the most efficient Camera of its kind ever designed.

It is not by any means a toy, but is in every respect a perfect replica of our larger-sized Cameras, and none of the remarkable points of the Unit Shutter have been sacrificed or deteriorated in bringing the mechanism down to such small proportions as was necessary to fit it in so small a Camera as the Minim.

**Crisp, Sharp Negatives are obtained which will allow of considerable Enlarging.**

For Postcard Daylight Enlarger, see p. 211.

### SPECIFICATION.

Camera Body and Front made of Aluminium.  
Front held rigid with substantial yet light cantilever arms.  
Covered with Black Morocco Leather.

Leather Bellows

Direct Vision Finder.

Six Single Metal Slides.

Packed in two black Leather Purses.

### PRICE.

LENS.	Series.	Aperture.	Price.
Cooke Anastigmat .. .. .	III.A	F3.5	£10 10 0
Goerz Dagor .. .. .	III.	F6.8	11 10 0
Voigtlander Heliar .. .. .	—	F4.5	11 10 0
Zeiss Tessar .. .. .	LC	F4.5	11 10 0
Extra Single Slides .. .. .			0 1 6
Film Pack Adapters .. .. .			0 7 6
Antinous Release .. .. .			0 5 0

The fitting of a Film Pack Adapter immediately converts the Minim to a Daylight Loading Film Camera.

**The Minim is the Smallest Self-capping Focal Plane Camera in the World.**

SIZE OF PLATE.

$2\frac{5}{16} \times 1\frac{3}{4}$  in.

OR

$6 \times 4\frac{1}{2}$  C/M

SPECIAL POINTS:

Extremely small Size.

$4\frac{1}{2} \times 2\frac{1}{2} \times 1$

Unit Focal Plane Shutter Embodied.

Time Exposures of any duration.

Instantaneous Exposures from 1/15th to 1/1000th.

Self-Capping Blind to Shutter.

Automatic Self-Adjusting Slit.

Perfect Exposures for Slow Subjects.

Perfect Exposures for Quickly-moving Objects.

Opened and Closed Instantly.



**THORNTON-PICKARD****UNITA Collapsible Camera.**

Made in  
**THREE**  
SIZES

**3½ × 2½**  
**4¼ × 3¼**  
(Quarter Plate)  
**9 × 12**  
c/m.

**RANGE OF SPEEDS**  
**3 Seconds to 1/1000th.**

Fitted with the Patent

**UNIT TIME & INSTANTANEOUS SELF-CAPPING FOCAL PLANE SHUTTER.**

The notable point of difference between the new Unita Camera and the various makes of Collapsible Cameras already on the market, is that the Unita is fitted with the Thornton-Pickard Patent Unit Self-capping Time and Instantaneous Focal Plane Shutter as described in detail on page 195. This fact alone makes the Unita preferable to all other Cameras of similar type. It is superior to all others both for simplicity and efficiency. One and the same turn of the Winding Key performs the necessary operations for the correct working of the Unit Focal.

**SPECIFICATION.**

Unit Camera, with Mahogany Body, leather-covered, and with ebony polished Front and Back. Strong self-locking Steel Struts, fixing camera absolutely rigid. Square Morocco Leather Bellows. Unit Self-capping Time and Inst. Focal Plane Shutter embodied. Pneumatic and Trigger Releases. Rising, Falling, and Cross Front. Three Double Plateholders. Aluminium Cased. Direct Vision Finder and including Leather Carrying Case.

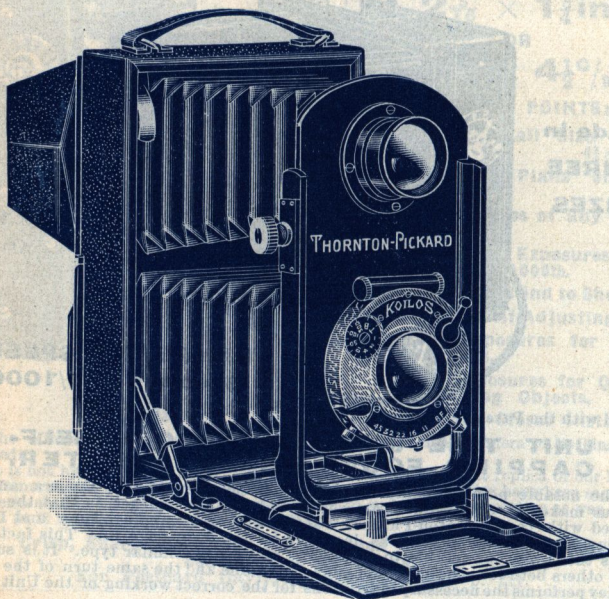
	Series	Ap'ture	SIZE.		
			3½ × 2½	4¼ × 3¼	9 × 12 c/m.
Outfit as above without Lens	—	—	£6 10 0	£6 10 0	£6 10 0
T.P. Ruby Anastigmat	I.	F6.8	10 0 0	10 0 0	10 0 0
Dallmeyer Stigmatic	II.	F6	12 15 0	12 15 0	12 15 0
Cooke Anastigmat	II.	F4.5	12 15 0	12 15 0	12 15 0
Goerz Celor	I.B.	F4.8	12 15 0	12 15 0	12 15 0
Goerz Dagor	III.	F6.8	12 10 0	12 10 0	12 10 0
Voigtlander Heliar	—	F4.5	12 15 0	12 15 0	12 15 0
Zeiss Tessar	I.C.	F4.5	13 12 0	13 12 0	13 12 0
Extra Plateholders of Special Quality	—	—	0 10 6	0 10 6	0 10 6

**3½ × 2½ UNITA with Cooke Lens, F6.5, £10 10 0.**



NEW PATENT

# Folding Twin Lens Camera



## SPECIFICATION.

**Camera.**—Body of selected Kiln-dried Mahogany, covered with Morocco Leather, giving a dainty and elegant appearance; Base extremely rigid, of Duralumin, a new metal combining the strength of steel with the lightness of aluminium, still further strengthened by Solid Metal Runners; Solid Metal Front Fork, V-shaped, with Metal Sliding Front Panel; Rising Front operated by screw; Cross Front giving rise and fall for vertical pictures; Extension sufficient for Lenses up to 6in. focus; Twin Leather Bellows.

**Slides.**—Metal, single, each carrying one plate, two with each outfit.

**Shutter.**—Koilos, Time, Bulb, and Inst., 1 sec. to 1/300th; time of any duration.

**Lens.**—As specified.

**Size.**— $3\frac{1}{2} \times 2\frac{1}{2}$ .

## PRICE LIST.

	Series	Aper- ture	Pantoplanat and Anastigmat	Pair of Anastig- mats
Size of Plate, $3\frac{1}{2} \times 2\frac{1}{2}$				
Pair of T.-P. Pantoplanats	—	—	£7 10 0	—
Ruby Anastigmat .. and Pantoplanat ..	—	F6.8	10 10 0	£14 0 0
Aldis Anastigmat .. and Pantoplanat ..	III.	F7.7	8 10 0	9 10 0
Dallmeyer Stigmatic .. and Pantoplanat ..	IV.	F6.8	10 0 0	13 0 0
Dallmeyer Stigmatic .. and Pantoplanat ..	II.	F6	12 15 0	18 10 0
Aldis Anastigmat .. and Pantoplanat ..	II.	F6	—	10 10 0



THORNTON-PICKARD

NEW PATENT

# Reflex Attachment



The Thornton-Pickard New Reflex Attachment is the latest novelty for all interested in Reflex Cameras. It is a perfect, and not a make-shift arrangement for converting a Folding Pocket or other type of Hand Camera into a Reflex Camera. It is a true Reflex only requiring a Camera Front and Lens, and this the photographer's Hand Camera provides. The Hand Camera merely slides on to a metal frame on the front of the Reflex Attachment, and is at once ready for use as a real Reflex Camera. The slides fit in the back of the Reflex Attachment just as they fit in the ordinary Camera back. The Reflex Attachment is fitted with the Unit Self-capping Time and Instantaneous Focal Plane Shutter and Self-setting and Self-locking Mirror, New Auto Exposure Stop and Indicator, exactly as fitted in all T. P. Reflex Cameras.

As the great majority of exposures made with Folding Pocket Hand Cameras are made in the horizontal or landscape shape, the Reflex attachment is made to work in the horizontal position only. It is made and quoted in the quarter-plate,  $9 \times 12$  c/m, and postcard sizes. Larger sizes and Stand Camera patterns made to order.

### SPECIFICATION.

Reflex attachment, with Unit Self-capping Time and Instantaneous Focal Plane Shutter and Self-setting Mirror, Focussing Hood, front fitted with metal frame to take camera and the back to take slides. Fitted to Imperial Pocket Cameras without charge.

Quarter Plate.

£5 5 0

9 × 12 c/m.

£6 6 0

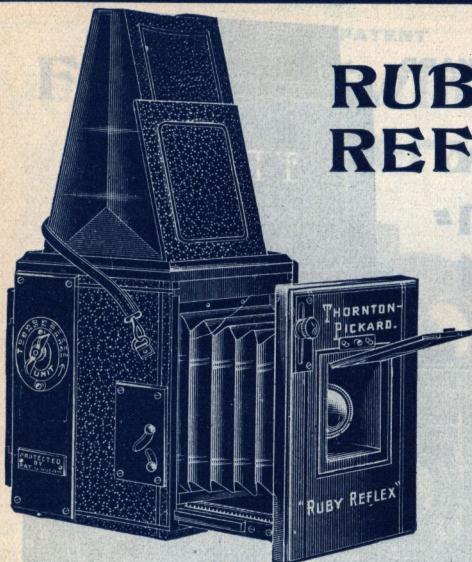
Postcard  $5\frac{1}{2} \times 3\frac{1}{2}$   
and  $9 \times 14$  c/m.

£6 10 0

Dimensions  $5\frac{3}{4} \times 4 \times 6\frac{1}{2}$  |  $6 \times 4 \times 6\frac{1}{2}$  |  $7 \times 4\frac{1}{2} \times 6\frac{1}{2}$   
Weight .. .. 2lb. 10oz. | 3lb. | 3lb. 4oz.



# RUBY REFLEX



**New Auto Exposure  
Stop and Indica-  
tor, as now fitted  
to all T.P. Reflex  
Cameras.**  
No extra Speed  
Indicator.

## RUBY REFLEX. PRICE LIST & SPECIFICATION.

**Camera.**—Body made of Mahogany throughout, covered with fine seal-grained morocco leather. All external metal fittings black oxydised and enamelled, and mechanism covered with dull black ebonite plates. Camera, Back, Front, and Focussing Hood Frame all made of specially seasoned and prepared ebonised wood, black throughout.

**Detachable Lens Box of Black Ebonised Wood, with Sky Shade.**

**Reversible self-erecting Focussing Hood,** to enable photographs to be taken without the subject's knowledge. Made of Stiffened leather, rigid when erected, holding flat when not in use. Detachable for cleaning round glass.

**Revolving Back.**

**Reflecting Mirror** of specially-prepared glass, silvered on the surface, everset.

**Unit Focal Plane Shutter.**—Quickwind, latest and most perfect type. Time Exposures of any duration. Instantaneous Exposures of 1-10th to 1-1000th of a second. Automatic Self-capping Blind.

**Plateholders.**—Three, each holding two plates;

or **Double Bookform Slides**, instead of solid Plateholders, at extra price.

## RUBY REFLEX CAMERAS with VARIOUS MAKES of LENSES.

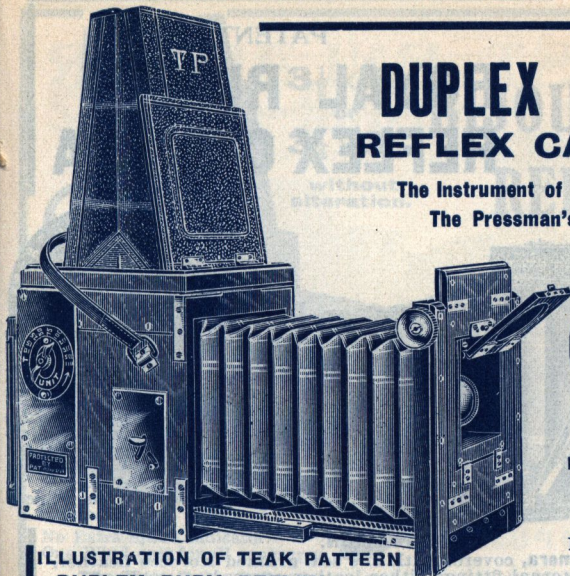
Specification as above, with Three Double Plateholders and Lens as quoted.

OUTFIT WITH LENS	Series	Largest Ap'ture	1/2-plate 4 1/2 x 3 1/2		5x4, 9x12 c/m Horizontal.		5x4 & P.O. 9x12 c/m Square Rev. Back		1/2-plate 6 1/2 x 4 1/2					
			£	s.	d.	£	s.	d.	£	s.	d.			
<b>Thornton-Pickard</b>														
Ruby Anastigmat	—	F6.8	12	0	0	13	0	0	16	10	0	21	0	0
Dallmeyer Stigmatic...	II	F6	14	15	0	15	15	0	20	2	6	26	10	0
Aldis Anastigmat .....	II	F6	10	12	6	11	12	6	15	0	0	19	17	6
Beck Isostigmat .....	II	F5.8	11	10	0	12	10	0	16	2	6	21	5	0
Cooke Anastigmat ....	II	F4.5	14	2	6	15	2	6	18	16	0	23	10	0
Goerz Celor .....	IB	F4.8	14	10	0	15	10	0	19	10	0	25	5	0
Goerz Dagor .....	III	F6.8	14	5	0	15	5	0	19	5	0	24	15	0
Zeiss Tessar .....	IC	F4.5	14	10	0	15	10	0	20	0	0	26	0	0
Voigtlander Heliar .....	—	F4.5	14	10	0	17	5	0	20	5	0	29	10	0
Lacour- } Eurygraphe	II.B	F6	13	5	0	14	5	0	17	15	0	22	10	0
Berthlot } Eurygraphe	IV.B	F4	17	15	0	18	15	0	23	5	0	28	15	0
Overseas Teak Outfits														
Extra .....	—	—	3	10	0	—	—	—	4	0	0	5	5	0
Camera, Shutter, 3 Plateholders, no Lens			9	0	0	10	0	0	13	0	0	17	6	0
Camera and Shutter only	..	..	8	10	0	9	10	0	12	10	0	16	10	0



# DUPLEX RUBY REFLEX CAMERA

The Instrument of Precision.  
The Pressman's Ideal.



New Auto Exposure Stop and Indicator, as now fitted to all T-P. Reflex Cameras.

No extra Speed Indicator.

ILLUSTRATION OF TEAK PATTERN DUPLEX RUBY REFLEX.

## SPECIFICATION AND PRICE LIST.

As Ruby Reflex, page 216, but with

Rack and Pinion Rising and Falling Front, with self-locking pinion.

Double Extension, operated automatically by One Pinion, allowing use of lenses of long focus.

DUPLEX RUBY REFLEX WITH LENS.	Series	Aper-ture	$\frac{1}{2}$ -plate $4\frac{1}{2} \times 3\frac{1}{2}$			5×4, P.C. and 9×12 c/m Horizontal.			5×4, P.C. and 9×12 c/m Revolving Back.			$\frac{1}{2}$ -Plate. $6\frac{1}{2} \times 4\frac{1}{2}$		
			£	s.	d.	£	s.	d.	£	s.	d.	£	s.	d.
With Thornton-Pickard Ruby Anastigmat ..	—	F6·8	14	0	0	15	0	0	19	10	0	24	0	0
Dallmeyer Stigmat. ....	IV	F6·3	13	10	0	14	10	0	19	5	0	24	15	0
Do. ....	II	F6	16	15	0	17	15	0	23	2	6	29	10	0
Aldis Anastigmat .....	II	F6	12	12	6	13	12	6	18	0	0	22	17	6
Beck Isostigmat .....	II	F5·8	13	10	0	14	10	0	19	2	6	24	5	0
Cooke Anastigmat .....	II	F4·5	16	2	6	17	2	6	21	16	0	26	10	0
Do. do. ....	III	F6·5	14	17	6	15	17	6	21	0	0	25	13	6
Goerz Dagor .....	III	F6·8	16	5	0	17	5	0	22	5	0	27	15	0
Goerz Celor .....	II	F4·8	16	10	0	17	10	0	22	10	0	28	5	0
Zeiss Protar .....	VIIA	F6·3	19	4	0	20	4	0	26	3	0	30	3	0
Voigtlander Collinear ...	II	F5·4	16	15	0	17	15	0	24	0	0	28	0	0
Lacour- ) Eurygraphe ...	II.B	F6	15	5	0	16	5	0	20	15	0	25	10	0
Berthiot ) Eurygraphe ...	IV.B	F4	19	15	0	20	15	0	26	5	0	31	15	0
Overseas Teak Outfits, with 3 Teak Slides, extra			3	10	0	—	—	—	4	5	0	5	10	0
Camera, Shutter, 3 Plate-holders, No Lens Camera and Shutter only .....			11	0	0	13	0	0	16	5	0	20	10	0
Extra Plate Holders .....			0	5	6	0	6	6	0	6	6	0	8	6
Extra Double Bookform Slides .....			0	10	0	0	11	0	0	11	0	0	12	6
"Film Pack Adapter" .....			0	15	0	0	16	0	0	16	0	1	0	0
"Mackenzie-Wishart Patent Daylight-loading Slide (A) .....			0	7	6	0	8	6	0	8	6	—	—	—
Envelopes for do. .... each			0	1	3	0	1	6	0	1	6	1	1	0
Focussing Magnifiers .....			0	10	6	0	10	6	0	10	6	0	10	6
Stiff Waterproof Cloth Case to hold Camera and 3 Slides .....			0	10	0	0	12	6	0	12	6	0	14	0
Solid Leather Case, Attache Case Pattern, to hold Camera and 3 Slides.			1	15	0	2	5	0	2	5	0	2	15	0



PATENT

# ROYAL RUBY REFLEX CAMERA



**New Auto Exposure Stop and Indicator**, as now fitted to all T.-P. Reflex Cameras.  
No extra Speed Indicator.

## SPECIFICATION.

- Boxform Reflex Camera**, covered with fine seal-grained Morocco Leather, and with all external fittings either leather covered or oxydised.
- Extending Baseboard**, with extra long extension of 15in. full in  $\frac{1}{4}$ -plate size.
- "Omniflex" Rising, Falling, Swinging, and Extending Front**. Detachable Lens Panel.
- Rack and Pinion Focussing**, for near objects.
- Self-locking Revolving Back**, for Horizontal and Vertical pictures.
- Long Self-contained Focussing Hood**, rigid when erected.
- Best Silver-surfaced Everset Reflecting Mirror**, specially mounted, and returning to set position after each exposure. No vibration during exposure.
- Double-acting Release**, releasing Shutter and raising Mirror simultaneously.
- Special Locking Device** for securing Mirror out of way when using Camera on a tripod.
- Thornton-Pickard Unit Self-capping Time and Instantaneous Focal Plane Shutter**.
- Tripod Bush**, for use on Stand.
- Three Double Plateholders** of new design, fitted with Spring Light Traps and Aluminium Shutters.

## PRICE LIST.

	Series	Aperture	Leather-Covered						Teak Overseas		
			$\frac{1}{4}$ -plate $4\frac{1}{4} \times 3\frac{1}{4}$	5x4 9x12c/m and P.C. 9x14c/m		$\frac{1}{2}$ -plate $6\frac{1}{2} \times 4\frac{1}{4}$	$\frac{1}{4}$ -plate $4\frac{1}{4} \times 3\frac{1}{4}$				
			£	s.	d.	£	s.	d.	£	s.	d.
T.-P. RUBY Anastigmat	—	F6.8	16	0	0	21	15	0	20	10	0
DALLMEYER Stigmatic...	IV.	F6.3	15	10	0	21	10	0	19	15	0
DALLMEYER Stigmatic...	II.	F6	18	15	0	25	7	0	23	0	0
COOKE Anastigmat.	II.	F4.5	18	2	6	24	0	0	22	7	6
GOERZ Dagor.....	III.	F6.8	18	5	0	24	10	0	22	10	0
ROSS Homocentric	II.	F5.6	18	0	0	24	5	0	22	5	0
VOIGTLANDER Collinear....	II.	F5.4	18	15	0	26	5	0	23	0	0
ZEISS Tessar.....	I.C	F4.5	18	10	0	25	5	0	22	15	0
LACOUR-Eurygraphe.	II.B	F6	17	5	0	23	0	0	21	10	0
BERTHIOT Eurygraphe.	IV.B	F4	21	15	0	28	10	0	26	0	0
Camera and Shutter only			13	0	0	18	10	0	17	5	0
Royal Ruby Reflex Outfit (without lens)			12	12	0	17	17	0	15	15	0
Extra charge for 3 Book-form Slides instead of 3 Plateholders									£0	10	0





$3\frac{1}{2} \times 2\frac{1}{2}$

or

$3\frac{1}{4} \times 3\frac{1}{4}$

without alteration.

# BIJOU-RUBY REFLEX



New Auto Exposure Stop and Indicator, as now fitted to all T.-P. Reflex Cameras.

No Extra Speed Indicator.  
One Wind only for all exposures.

The Bijou-Ruby Reflex is practically a reduction of the Duplex-Ruby, and contains all the advantages and movements of the larger-sized model. A perfect combination Camera giving  $3\frac{1}{2} \times 2\frac{1}{2}$  or  $3\frac{1}{4} \times 3\frac{1}{4}$  negatives; a most convenient arrangement for obtaining masked or full-sized lantern slides by contact printing.

It will take a 5" focus lens, and has sufficient reserve extension to allow the use of the single combination, taking a long focus lens of from 9" to 10".

### POINTS OF ADVANTAGE.

- Unit Self-capping Time and Inst. Focal Plane Shutter.
- Long Extension Camera.
- Rising and Falling Front.
- Revolving Back.
- Long Extension Focussing Hood.
- Reversing Self-Erecting Focussing Hood.
- Reversible Lens Box with sky shade.
- Blokform Slide taking 2 sizes of Plates.

### SPECIFICATION OF OUTFIT.

- Double Extension Camera, covered with Morocco Leather.
- Unit Time and Inst. Focal Plane Shutter.
- Detachable and Reversible Lens Box.
- 3 Double Blokform Slides.

### OVERSEAS TEAK PATTERN.

Camera and Slides made of seasoned Teak, and Brass-bound.

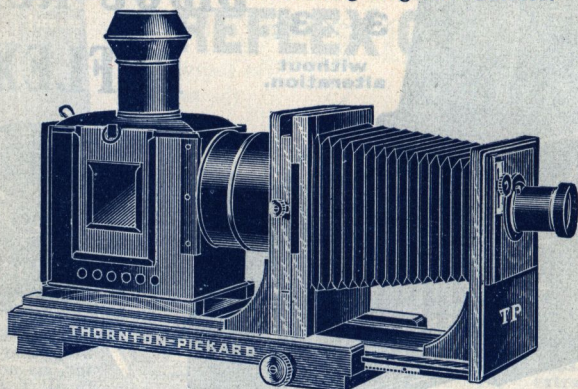
	Aper- ture	Ser- ies	PRICES	
			Ordinary Pattern	Overseas Teak
Camera, Shutter, and 3 Plate Holders .. .. .			£11 0 0	£14 10 0
Camera and Shutter only .. .. .			10 0 0	12 10 0
With Ruby Anastigmat Lens .. .. .	F6.8	—	13 5 0	16 15 0
"    Aldis .. .. .	F6	II	11 15 0	15 5 0
"    Dallmeyer Stigmatic .. .. .	F6	II	15 5 0	18 15 0
"    Cooke Anastigmat Lens .. .. .	F4.5	II	14 15 0	18 5 0
"    Voigtlander Heliar .. .. .	F4.5	—	15 15 0	19 5 0
"    Collinear .. .. .	F5.4	II	16 0 0	19 10 0
"    Goerz Dagor .. .. .	F6.8	III	14 15 0	18 5 0
"    Goerz Celor .. .. .	F4.8	IB	15 0 0	18 10 0
"    Zeiss Protar .. .. .	F6.3	VIIA	17 5 0	20 15 0
Leather Case to carry Camera and 3 Plate Holders .. .. .			1 5 0	1 5 0
Extra Double Blokform Dark Slides .. .. .			0 10 0	0 15 0

Remember the advantage of the Reversing Hood.



# ARTIST ENLARGER

With Rack and Pinion Revolving Negative Carrier.



## THE POPULAR 70/- ENLARGER.

Strong Long Extension Bellows.  
Rack and Pinion Focussing  
exactly like a Camera.  
Rack and Pinion Revolving  
Negative Carrier Stage.  
Perfect Rigidity of Condenser  
Body.

Solid Strengthening Brackets.  
Long Extension Collapsible  
Light-tight Tubes.  
Lantern Body Sliding on Maho-  
gany Platform.  
Russian Iron Lantern of Sound  
and Substantial Construction.

### Specification and Price List.

#### Pattern A.

Camera made of beautifully polished Mahogany, fitted with Rising Front and Revolving Negative Holder.

**Strong Bellows.**—Rack and Pinion for Fine Focussing. Extension Baseboard.

**Lantern Body.**—Russian iron of sound and substantial construction with Cowl Chimney, sliding back door. Light-tight side door with Ruby glass window. Long Extension Collapsible Condenser Tubes of new design. Tray and Rod.

**Condenser.**—Specially selected Plano Convex in Solid Mounts.

**Lens.**—Rapid Portrait in Oxydised Brass Mount with Iris Diaphragm and Orange Glass Cap.

#### PRICE.

ENLARGER with	Series	Aper- ture	Size.								
			1/4-Plate	5 in. × 4 in. and P.C.	3/4-Plate						
			£	s.	d.	£	s.	d.	£	s.	d.
Portrait Lens .. ..	—	—	3	10	0	4	10	0	6	0	0
Aldis Anastigmat .. ..	III.	F7.7	4	0	0	5	0	0	6	10	0
Condensers .. ..			5½ in.			7 in.			8½ in.		

#### OPTICAL PROJECTION REQUIREMENTS.

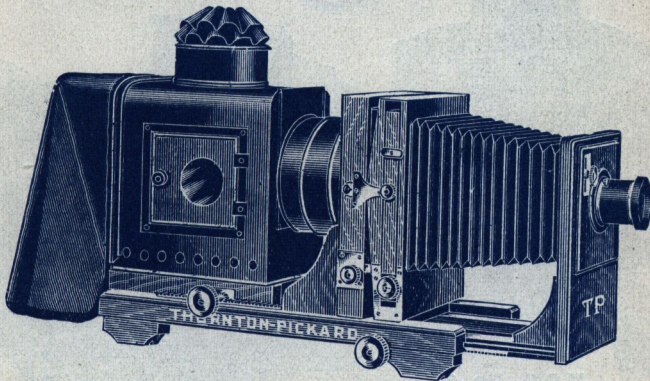
4½ in. Bi-convex and Meniscus Condenser with Adapter to fit Enlarger Body .. .. .	} 1/4-Plate, 5 × 4, & P.C.	£1 5 0		
Lantern Slide Carrier Adapting Frame, and "Merito" Lantern Slide Dissolving Carrier .. .. .			Half-Plate	£1 10 0



**THORNTON-PICKARD**

**SPECIAL RUBY ENLARGER**

A High-Class Enlarger at a Reasonable Price.



**Specification and Price List.**

**CAMERA.**—Long and Short Extension Enlarger, Condenser Body, Negative Carrier Stage, Baseboard and Extension Frames, and all Woodwork of seasoned Mahogany, beautifully French Polished. Rack and Pinion Revolving Negative Carrier with inner frames for different sized negatives. Rack and Pinion Focussing. Rack and Pinion Rising and Falling Carrier. Rack and Pinion Swinging Body. Real Leather Bellows.

**LANTERN.**—Russian Iron of sound and substantial construction; Cowl: Triple Extension Collapsible Condenser Tubes, Light-Tight Hinged Side Door with Ruby Glass Window.

**CONDENSER.**—Specially Selected Plano Convex.

**LENS.**—Fine quality Portrait, in Black and Brass Mount, with Iris Diaphragm and Orange Glass Cap.

Adjustable Fireproof Curtain Light Screen.

**PRICES.**

ENLARGER with	Series	Aper- ture	½-Plate	P.C.	¾-Plate
			£ s. d.	£ s. d.	£ s. d.
Portrait Lens .. ..	III.	F7.7	5 10 0	6 15 0	9 0 0
Aldis Anastigmat .. ..		F6.8	6 0 0	7 5 0	9 10 0
T.-P. Ruby .. ..			8 15 0	10 5 0	12 15 0
Condensers .. ..			5½ in.	7 in.	8½ in.

Any of the T.P. Enlargers can be instantly converted to act as Optical Projection Lanterns for Lantern Slide display by the addition of the following

**OPTICAL PROJECTION REQUIREMENTS.**

4¼ in. Bi-Convex and Meniscus Condenser with Adapter to fit Enlarger Body .. ..	} ½-Plate, 5×4, & P.C.	£1 5 0
Lantern Slide Carrier Adapting Frame, and "Merito" .. ..		Half-Plate
Lantern Slide Dissolving Carrier .. ..		£1 10 0

**THE ALL BRITISH CAMERA MAKERS**

## THORNTON-PICKARD



**M.C.C. No. 6.**

### M.C.C. ENLARGERS

In addition to the T.-P. series of Enlarging Apparatus, we are manufacturing the well-known M.C.C. Enlargers, having acquired the business, Patents and Trade Marks of the Midland Camera Co., Ltd.

#### M.C.C. No. 3.

This Model has been introduced to meet the demand for a lantern, which, while possessing all essential movements, is yet sold at a popular price.

Woodwork of fumed oak, highly finished. Horizontal and vertical swing to carrier, central swing, rack and pinion adjustment to front and lantern body.

	With Portrait Lens.	Aldis Anastigmat F7.7.	Aldis Anastigmat F6.
$\frac{1}{2}$ -Plate with $5\frac{1}{2}$ in. Condenser.. ..	£4 0 0	£4 10 0	£5 0 0
$5\times 4$ and } Postcard } " $6\frac{1}{2}$ in. " .. ..	5 0 0	5 10 0	6 2 6
$\frac{1}{2}$ -Plate " $8\frac{1}{2}$ in. " .. ..	7 0 0	7 10 0	9 12 6

#### M.C.C. No. 6.

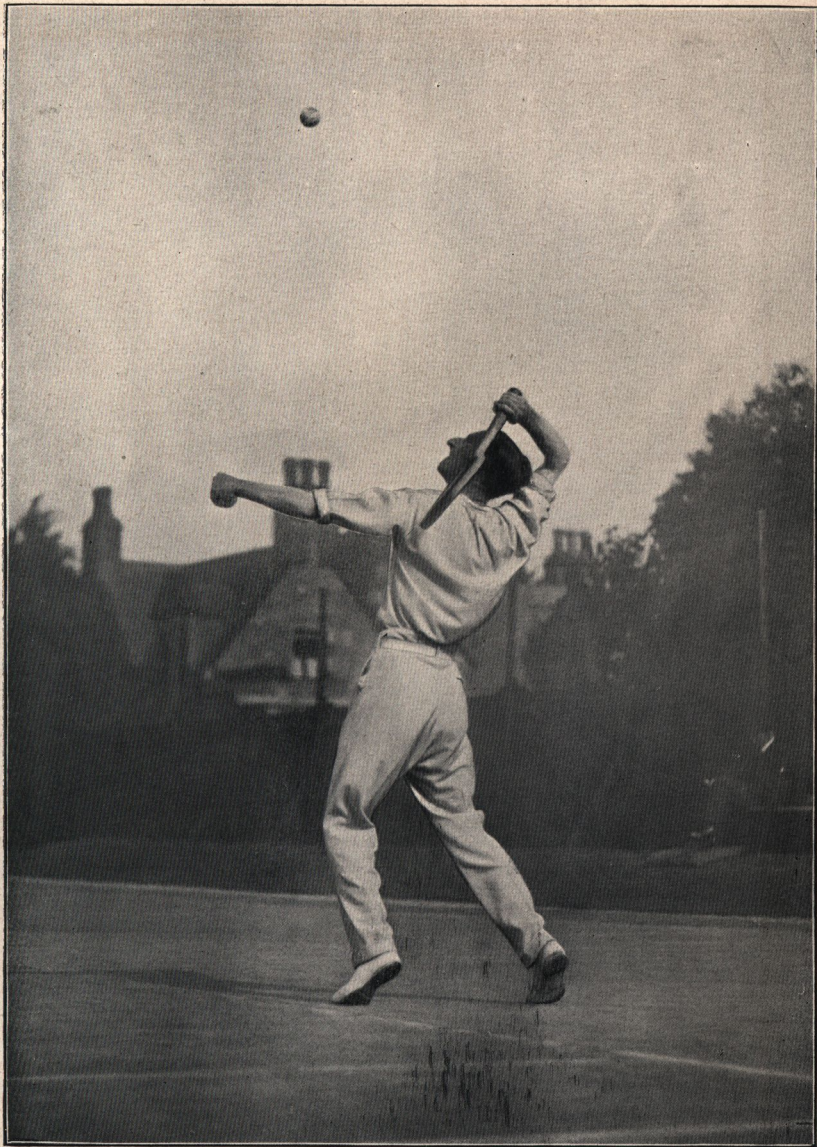
This model has won for itself a great reputation by virtue of its general excellence and special range of movements worked by rack and pinion—protected by patents—contained in no other instrument.

Woodwork throughout of quartered oak, beautifully polished. Rise and fall, cross, rotating and swinging movements to negative carrier. Rack and pinion adjustment to front and lantern body. Detachable bellows, &c.

	With Portrait Lens.	Aldis Anastigmat F7.7.	Aldis Anastigmat F6
$\frac{1}{2}$ -Plate with $5\frac{1}{2}$ in. Condenser.. ..	£6 10 0	£7 0 0	£7 10 0
$5\times 4$ and } Postcard } " $6\frac{1}{2}$ in. " .. ..	7 15 0	8 5 0	8 15 0
$\frac{1}{2}$ -Plate " $8\frac{1}{2}$ in. " .. ..	10 0 0	10 10 0	12 10 0

**THE ALL BRITISH CAMERA MAKERS**





"SERVICE."

J. S. TURNER.

*Taken with the Thornton-Pickard Ruby Reflex Camera.*



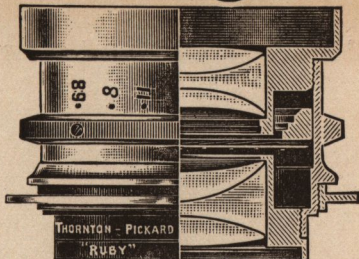
"ON THE EDGE OF THE WOOD."

E. W. TATTERSALL.

*Taken with T.-P. Camera and Shutter, and  
T.-P. Pantoplanat Lens, F8.*



# Ruby Anastigmat Lens



## A PERFECT ANASTIGMAT AT A POPULAR PRICE.

It consists of two perfectly corrected Anastigmat Lenses, each composed of three glasses, free from distortion with a flatness of field that cannot be surpassed by lenses at double the price.

The two lenses can be used singly, even at full aperture, without appreciable loss of definition and covering power, thus giving a long-focus lens practically of as perfect form as the complete lens.

The Ruby Anastigmat Lens is superior to many Anastigmats sold at much higher prices.

It is a lens for universal work, has a large working aperture of F6.8, at which aperture the plate is sharply covered to the extreme edges. For definition, brilliancy, and flatness of field, no lens at the price can equal it. It is suitable alike for Portraits, Groups, ordinary Snap-Shot and High-speed Instantaneous Work, and, in fact, for every class of subject.

The Prices for this Lens and the approximate foci of the various sizes are given below.

Description.	Equiv. Focus, inches	Full Apert're	SIZE OF PLATE. Covered sharply at			PRICE.
			F6.8	F16	F44	
<b>RUBY ANASTIGMAT</b>	5	F6.8	4½ × 3¼	6½ × 4½	8½ × 6½	£3 10 0
" "	6	F6.8	5 × 4	8 × 5	10 × 8	4 0 0
" "	7½	F6.8	6½ × 4½	8½ × 6½	12 × 10	4 10 0
" "	8	F6.8	7½ × 5	8½ × 6½	12 × 10	5 0 0
" "	9½	F6.8	8½ × 6½	10 × 8	15 × 12	7 0 0
" "	10	F6.8	10 × 8	12 × 10	18 × 15	8 0 0
" "	14	F6.8	12 × 10	15 × 12	18 × 24	12 10 0
" "	19	F6.8	15 × 12	18 × 15	24 × 20	22 0 0

## PANTOPLANAT LENS, F8.

The Thornton-Pickard **NEW PANTOPLANAT Lens** is the result of very careful tests and experiments. No lens of such value has ever been offered at so low a price. It is well corrected for astigmatism, and gives very brilliant definition over the whole field.

Name and Description	To Cover Plates. Inches.	Equiv. Focus. Inches.	Focus of Back or Front Combination Inches.	PRICE.
Pantoplanat, Rapid Rectilinear, With Iris F8.	{ 4½ × 3¼ and 5 × 4 }	5½	10	£1 0 0
" "	{ 6½ × 4½ and 7½ × 5 }	9	16	1 5 0
" "		10	21	1 10 0

## PANTOPLANAT STEREOSCOPIC LENSES, 5½in. focus, accurately paired, 40/- per pair.

Wide Angle Rectilinear, with Revolving Diaphragm F11.	{ 4½ × 3¼ and 5 × 4 }	—	—	£2 0 0
" "	{ 6½ × 4½ }	5½	—	2 10 0

# CARRYING CASES

BEST QUALITY,

For THORNTON-PICKARD and other Cameras.



PATTERN A.



PATTERN D.



PATTERN C.

Patterns A and B are Waterproof Cloth Cases, Leather Bound, with Collapsible sides and loose division, lined with Green Baize, and fitted with Snap Lock and Key, and Shoulder Strap.

A To hold Camera, three Slides, Shutter, Lens, Focussing Cloth, &c.

B To hold three extra Slides only.

Pattern H is a strong Waterproof Cloth Case, Leather Bound, to hold Tripod Stand.

Patterns C and D are Strong Waterproof Cloth Cases, Leather

Bound, with Stiff Sides and fast division, Lined with Green Baize, and fitted with Snap Lock and Key, Handle and Shoulder strap, which may also be used Knapsack fashion.

C To hold Cameras, three Slides, Shutter, Lens, Focussing Cloth, &c.

D To hold Camera, six Slides, Shutter, and accessories; or Camera with Lens attached in situ, five Slides, Shutter, and accessories; or Stereoscopic Camera, five Slides, Shutter, and accessories.

## LEATHER CASES.

Patterns F and G are best portmanteau finish Leather Cases, built on internal steel framing. They hold respectively same as Waterproof Cloth Cases C and D.

Sizes and Prices.	$4\frac{1}{2} \times 3\frac{1}{2}$	$5 \times 4$	$6\frac{1}{2} \times 4\frac{1}{2}$	$7\frac{1}{2} \times 5$	$8\frac{1}{2} \times 6\frac{1}{2}$	$10 \times 8$	$12 \times 10$
Pattern A Waterproof Cloth	0 7 6	0 8 6	0 9 6	0 11 6	0 13 6	0 16 0	..
Pattern B " "	0 5 6	0 6 6	0 7 6	0 8 6	0 9 6	0 12 0	..
Pattern C " "	0 14 0	0 15 0	0 16 0	0 18 0	0 1 0	0 1 3	0 1 8 0
Pattern D " "	0 17 6	0 19 0	0 1 0 0	0 1 2 0	0 1 4 0	0 1 8 0	0 1 15 0
Pattern F Solid Leather	.. 1 5 0	1 10 0	1 15 0	2 0 0	2 5 0	0 3 10	0 4 10 0
Pattern G " "	.. 2 0 0	2 5 0	2 15 0	2 17 6	3 10 0	0 4 15 0	0 6 0 0
Pattern H Stand Case	.. 0 7 0	0 7 0	0 7 0	0 7 0	0 7 0	0 9 0	..
Leather Lens Case	.. 0 3 6	0 3 6	0 4 0	0 4 0	0 4 0	0 5 6	0 7 6

## SECOND QUALITY.

Our second quality Cases are substantial and serviceable, and much lower in price.

Patterns J, K, and N correspond respectively to cases A, C, and D as regards their carrying capacity, and Pattern O to Leather Case F.

Sizes and Prices.	$4\frac{1}{2} \times 3\frac{1}{2}$	$5 \times 4$ & $9 \times 12$ c/m.	$6\frac{1}{2} \times 4\frac{1}{2}$	$7\frac{1}{2} \times 5$ & $13 \times 18$ c/m	$8\frac{1}{2} \times 6\frac{1}{2}$
Pattern J .. .. .	0 4 6	0 5 0	0 5 6	0 6 6	0 7 0
Pattern K .. .. .	0 7 0	0 7 6	0 9 0	0 10 6	0 11 6
Pattern N .. .. .	0 12 0	0 12 6	0 13 6	0 14 6	1 0 0
Pattern M (Stand Case)	.. 0 4 6	0 4 6	0 4 6	0 4 6	0 5 0
Pattern O (Leather Case)	..	..	1 0 0	..	1 5 0