

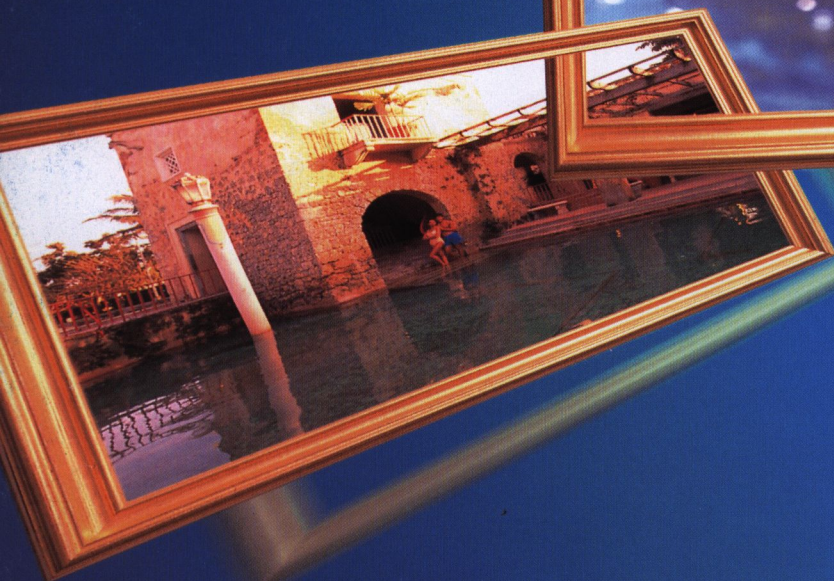
Nikon

PRONEA

IX240 Single-Lens Reflex

6i





P R O

A D V A N C E TO A NEW DIMENSION

P R O N E A

It's called the Pronea 6i, and it's the new dimension in Single-Lens Reflex (SLR) photography. Boasting a stylish metallic-gray color and sleek design, the Pronea 6i delivers Nikon quality and high performance — like superb exposure control and razor-sharp autofocus. Plus, with its Nikon F lens mount, you can access the incomparable Nikkor interchangeable autofocus lens system. Combine this with the excitement of the Advanced Photo System with its compact IX240 film cartridge and unique blend of portability, image quality and picture variety and you now have the opportunity to take pictures never before possible.

The Pronea 6i is a fusion of simplicity and high performance, designed to enable you to make great pictures — all types of pictures. From sports and action to elegant portraits and still-life shots, the Pronea 6i helps you create the images of clarity and beauty that you seek. Without complication, yet with a sophistication that brings you unexpected possibilities, the Pronea 6i will move you up the ladder to a new dimension in SLR photography. It's the easy way to take the greatest pictures of your life.



N E A

ACTION

PRONEA 6i



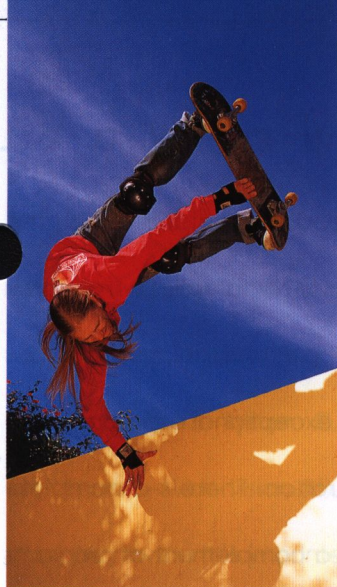
Pronea 6i with
IX-Nikkor 60-180mm f/4-5.6

CATCH IT AS IT HAPPENS

For action and sports pictures, the Pronea 6i excels. It's fast—with shutter speeds up to 1/4000 sec. and motor speeds up to 3.5* frames per second. Plus, with Nikon's Wide-Area Cross-Type AF sensor and Focus Tracking with Lock-On™, you're sure to get your subject in sharp focus even in difficult situations. There's even a special Sport Program mode that uses higher shutter speeds to capture dynamic action with a shallow depth of field. It all adds up to a camera that will make a difference for you.

** 3.3 fps with Focus Tracking.*





Sport Program  Continuous Servo AF **AF-C**



TRAVEL

PRONEA 6i

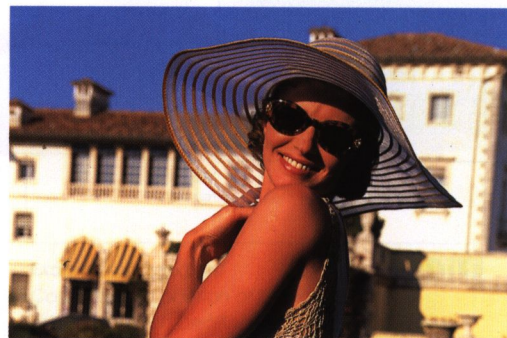
PICTURE THE WORLD

Whether you travel your neighborhood or the world, the Pronea 6i is sure to please. High-quality Nikon optics will give you clear, crisp and colorful results. The Pronea 6i also includes Nikon's famous 3D Matrix Meter for exceptional exposure accuracy and quick, convenient operation. There's a complete selection of exposure controls and a complement of programs



O F Y O U R T R A V E L S

for special situations, including a Landscape Program for travel vistas and a Hyperfocal Program to keep both close and distant subjects more sharply in focus. And since the Pronea 6i is an Advanced Photo System SLR, you're free to select from three print types — wide-vision (H), panorama (P) and classic (C). You can also have a title imprinted on the back of your prints.



C type **C**



H type **H**



Hyperfocal Program



P type



Pronea 6i with
IX-Nikkor 24-70mm f/3.5-5.6

PEOPLE

PRONEA 6i

MEMORIES FOREVER



Pronea 6i with
IX-Nikkor 20-60mm f/3.5-5.6



I LOVE YOU - 1996
01/SEP/96 2:00PM #6 10 123-456

Example of backprint

Contents and position of backprint titles
differ with each certified photofinisher.

TITLE

Who can resist taking pictures of the family? Childhood images, grandparents, family gatherings, holidays, all the events of our lives—preserved for future generations. For pictures of people, the Pronea 6i is perfect. It has a built-in Speedlight to light up the scene, and fill-flash performance for catchlights in the eyes. It even has red-eye reduction. You can achieve exposure excellence with Nikon's 3D Matrix Meter to capture color and details. And with the Pronea 6i's Advanced Photo System performance, you can also imprint a special notation, like "Birthday" or "Wedding", along with the date and other details on the back of the print to preserve the memory.



NATURE

PRONEA 6i



Pronea 6i with
IX-Nikkor 24-70mm f/3.5-5.6

PRESERVE THE BEAUTY

The Pronea 6i is ideal for nature and close-up photography. With Nikon's wide selection of interchangeable autofocus lenses, including the legendary Micro-Nikkor, you'll capture nature in all its glory. A Close-up Program helps you make great close-up pictures, and the exposure compensation feature lets you add variety to your pictures. In these and other ways, the Pronea 6i helps enhance your creative potential.



STILL LIFE

PRONEA 6i



Pronea 6i with
IX-Nikkor 20-60mm f/3.5-5.6

SERENE WITH QUIET SOPHISTICATION

Contemplate every detail—examine light, adjust, control, create the vision in your mind on film. Like an artist, you can let the Pronea 6i become your palette. There's 3D Matrix Metering for all occasions, and Center-Weighted or Spot for versatility and control. Try Aperture-Priority Auto to control depth of field and Auto Exposure Bracketing to try different exposures of the same scene. With the Pronea 6i, a wide range of options is at your command.



NEW TECHNOLOGY, NEW OPPORTUNITY

Designing cameras for generations of professionals has taught Nikon attention to detail, innovation and the creative spirit. And Nikon has created the Pronea 6i accordingly. Among cameras offering the Advanced Photo System, it's a leader, providing opportunities for professional-like photography through great features and the most extensive system of high-performance autofocus optics. The Pronea 6i offers the benefits of the exciting Advanced Photo System including exceptional versatility and high performance.

Extremely easy film handling

The Pronea 6i uses the Advanced Photo System's IX240 film. Just drop in the film cartridge. There's no need to thread film, which you never see or touch. In this way, the film is protected against dust, dirt, scratches and fingerprints. You just can't make a mistake loading it. Once the film is loaded, the camera's safety lock won't let the film cartridge chamber open. And if you inadvertently try to load an already exposed cartridge, the camera just won't allow it. From loading to rewinding, the Pronea 6i ensures that your IX240 film is secure.

Three print types to choose from

Choose from three different print types, intersperse them on the same roll of film and get your pictures back from the certified photofinisher in the types you chose. You can select wide-vision (H), panorama (P) or classic (C). It adds up to great pictures to make and look at. And it's fun, too!



Mid-roll change

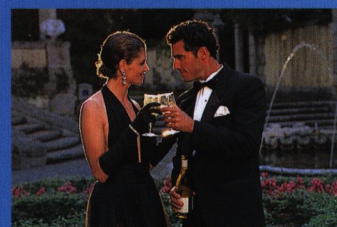
There's even a thoughtful provision that allows you to change film mid-roll; when you return the roll to the camera, it automatically advances to where you left off. With mid-roll change, you can switch film types according to your themes and subjects — yet another of the Advanced Photo System's great features.



H type **H**



P type **P**



C type **C**



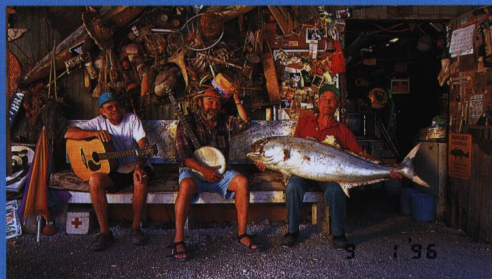
Data recording magnetic track for improved print quality

IX240 film also includes a special data recording magnetic track. Called Information Exchange (IX), it adds even more performance to your Pronea 6i. Important exposure data for each scene, including brightness, flash use, and more, is recorded on the track. This data is used when the certified photofinisher processes and prints your pictures. This way, you can have improved picture quality for each scene. If you've experimented with some creative effect, you can override this Picture Quality Improvement feature—ask your certified photofinisher.

Data imprint to help you remember

Date, time, ISO speed, shutter speed, aperture value and other exposure information is all automatically imprinted on the back of your prints. If you like, you can also imprint titles like "Birthday" or "Wedding" selected from a data bank of up to 99 titles in 12 languages; or you can even choose to have the date printed on the front of your prints too*. It's another way the Pronea 6i helps preserve your memories.

* Front imprinting may not be available at some certified photofinishers.



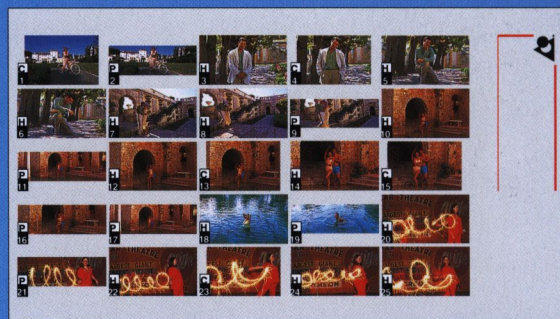
VACATION - 1996
01/SEP/96 2:00PM #6 ID 123-456

Contents and position of backprint titles differ with each certified photofinisher.

Extra conveniences

When you bring your film to a certified photofinisher, you get your film returned in the original cartridge and an Index Print which shows all the pictures you took, numbers them and even highlights the different print types you selected. A nice Pronea 6i extra: each time you take a picture—a group shot, for example—you can control the camera to remember how many prints you want (up to seven prints). So, when you get the film back from the certified photofinisher, you'll automatically have prints for everyone in the picture.

Index Prints



Note: The actual Index Prints may differ somewhat from the examples shown.

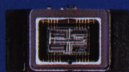
Visual Exposure Indicator

Four indicators on the film cartridge tell you the exposure status at a glance

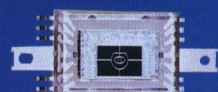


- : Unexposed (can be loaded)
- ◡: Partially exposed (can be loaded)
- ✕: Exposed (cannot be loaded)
- ◻: Processed (cannot be loaded)

NIKON ADVANTAGES PLUS THE ADVANCED PHOTO SYSTEM



Cross-Type Wide-Area Autofocus



3D Matrix Metering

High-performance focusing

The Pronea 6i boasts fast and accurate autofocus, with speed and focusing sensitivity that will assure sharp pictures, even under difficult conditions. Nikon's Cross-type Wide-Area Autofocus Sensor module gives you picture composing flexibility. With Focus Tracking, you can easily shoot moving subjects; Lock-On™ automatically takes care of those brief moments when something moves between you and your subject. The result is pictures of great clarity and detail.

Fast motorized shooting

To capture fast-moving action, shoot at speeds up to 3.5 frames per second in the Continuous (C) mode, and 3.3 frames per second when Focus Tracking automatically starts. That's quick enough for just about any situation you're likely to encounter.

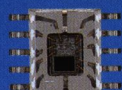
Superior metering

The Pronea 6i's focusing performance is matched by its superb Nikon 3D Matrix Meter. This meter features an eight-segment sensor to read scene brightness and contrast. When used with Nikkor lenses offering the Distance Information feature, this maximizes the performance of the Pronea 6i. The Pronea 6i is a versatile picture-making machine.

Built-in Speedlight

Topping off the Pronea 6i's brilliant features is a powerful built-in Speedlight with a guide number of 66 (ISO 200, ft.) and a flash sync speed of 1/180 sec. It works effectively with IX-Nikkor and AF Nikkor lenses that have a focal length of 20mm or longer. With performance-proven Nikon Matrix Balanced Fill-Flash,





Matrix Balanced Fill-Flash

you can make flash shots—indoors or outdoors—that look alive with the combination of natural and Nikon light. Additional features include flash bracketing, rear-curtain sync, slow-sync, red-eye reduction and an ISO hot-shoe you can use for an external Nikon Speedlight.



Ergonomic controls

The Pronea 61's ergonomically designed camera body is compact and easy to hold. Two dials give you simple control of the camera. The thumb-controlled Main-Command Dial is for shutter speed control and other exposure settings; the front Sub-Command Dial is for changing apertures. There are also dedicated buttons for frequently used functions. The neck strap hinge is designed so you can view the big LCD panel comfortably with the neck strap attached. Located at the back of the camera, the LCD panel can be illuminated in the dark and provides comprehensive camera and Speedlight settings at a glance. The indications inside the viewfinder are easy to understand. And you get approximately 100% of the viewfinder image reproduced on each print, so you can see how wide-vision H type, classic C type and panoramic P type prints look.

ADVANCED OR BASIC OPERATION, IT'S YOUR CHOICE.

THE PRONEA 6i LETS YOU CHOOSE THE WAY YOU WANT TO MAKE PICTURES

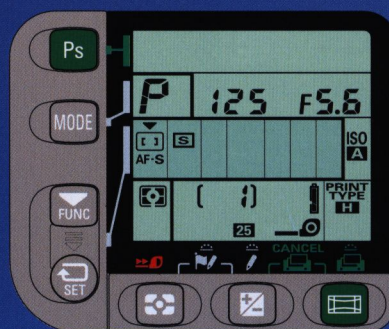
Select ADVANCED and you'll get total control to take pictures exactly the way you want to.

ADVANCED

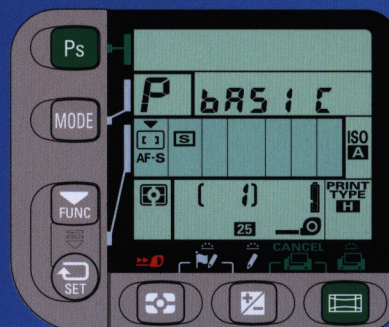


BASIC

Or keep it simple—select BASIC and get totally worry-free operation.



Here's what you can choose—



And here's what you can get—



Print types



Metering systems



Exposure modes



Vari-Program (Ps)



Flexible Program



AF modes



Focus area



Film advance modes



Multiple exposure



Flash sync modes



Exposure compensation



Flash output level compensation



Auto exposure/flash exposure bracketing



Manual ISO setting



Title imprint
(Language also can be selected)



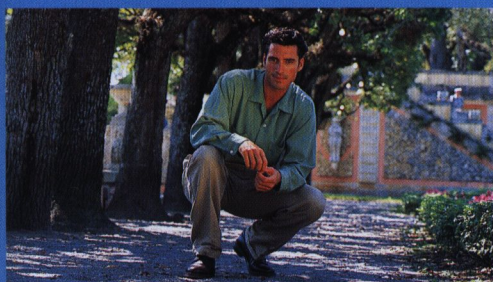
Print quantity



Quick Recall Function



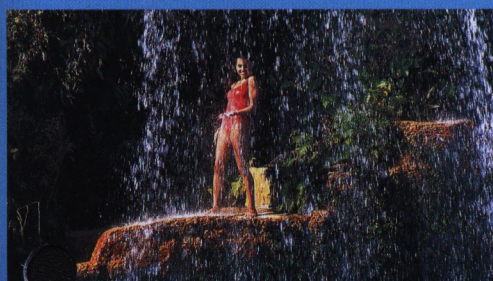
Self-timer



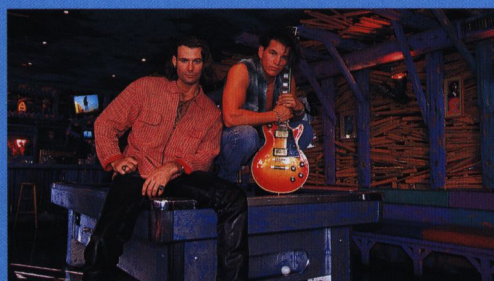
Great picture quality



Optimum exposure control



Sharp focus



And flash pictures

You can also choose—



Program modes



Flexible Program



Print types



Title imprint
Language also can be selected



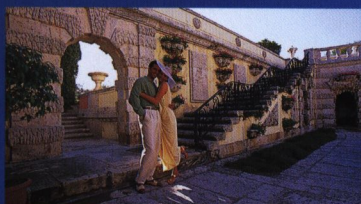
Print quantity



Self-timer

A SELECTION OF ADVANCED MODE FEATURES OFFERS PERSONAL CHOICE AND VERSATILITY

EXPOSURE MODES



P Auto-Multi Program

Ideal for all-purpose picture taking. The Pronea 6i's computer automatically selects both shutter speed and lens aperture. And Flexible Program lets you shift the combination of shutter speed and aperture normally set by Auto-Multi Program in 1/2 EV steps, while maintaining correct exposure.



S Shutter-Priority Auto

Choose from a full range of shutter speeds—30 seconds to 1/4000 second. Achieve everything from stop-action to motion effects.



A Aperture-Priority Auto

Perfect for controlling depth of field. Use larger apertures to make the main subject stand out, or smaller apertures to bring more of the scene into sharp focus.

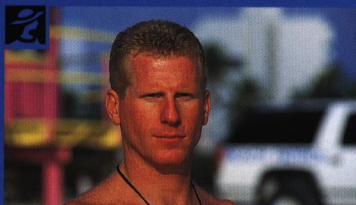


M Manual Control

You choose the aperture and shutter speed, using the camera's light meter to guide you.

VARI-PROGRAM MODES

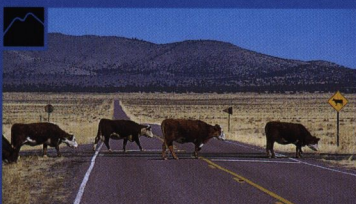
This gives you automatic setting convenience for a wide range of picture situations. Flexible Program possible.



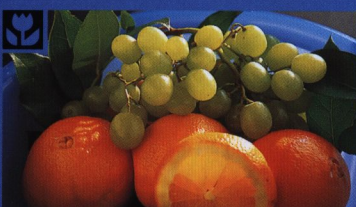
Portrait Program



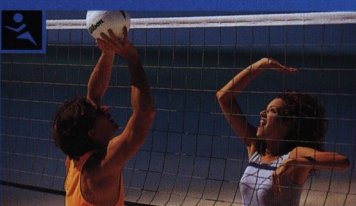
Hyperfocal Program



Landscape Program



Close-Up Program



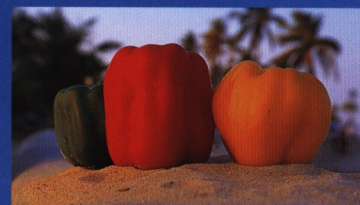
Sport Program



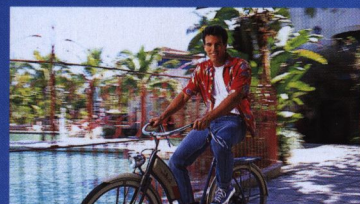
Silhouette Program

AF MODES

Shoot with focus-priority Single Servo (S mode) or release-priority Continuous Servo (C mode)



AF-S Single Servo



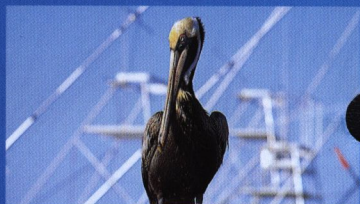
AF-C Continuous Servo

FOCUS AREA

Select Wide-area AF with extra-wide coverage and cross-type center point, or switch to Spot AF for precise placement of the focus detection sensor.



[] Wide-area AF



[] Spot AF

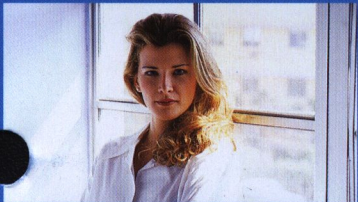
Features available with BASIC mode

METERING SYSTEMS

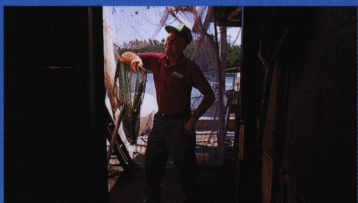
You can use the 3D Matrix Meter, Center-Weighted Meter or narrow-coverage, precision Spot meter to match your subject.



 3D Matrix Meter



 Center-Weighted Meter



 Spot Meter

FILM ADVANCE MODES

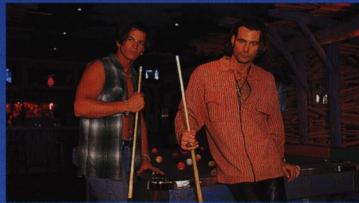
Choose either single, or continuous for up to approximately 3.5 frames per second.


 Single

 Continuous


FLASH SYNC MODES

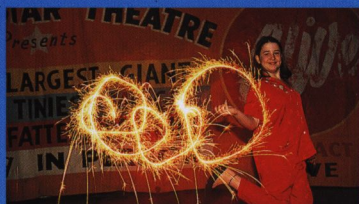
For creative flash pictures, you can choose slow sync or rear-curtain sync. There's also a red-eye reduction mode.




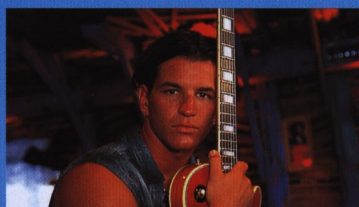
 Normal




 Slow sync



 Rear-curtain sync
REAR



 Red-Eye Reduction

 Red-Eye Reduction with slow sync

EXPOSURE COMPENSATION

Set exposure compensation from +5 EV to -5 EV in 1/2 EV increments. Flash exposure level can also be adjusted from -3 to 1 EV in 1/2 increments.

 Exposure compensation

 Flash output level compensation

EXPOSURE BRACKETING

Auto and flash exposure bracketing let you take three different exposures of the same scene in 1/2 or 1 EV steps.




Metered value



-1 EV



+1 EV

 Exposure bracketing

 Flash exposure bracketing

MULTIPLE EXPOSURES

This enables you to take as many exposures as you like on a single frame for creativity and fun.



QUICK RECALL

You can set your favorite combinations of all the controls, then instantly recall up to three sets of combinations. It's like having three custom cameras at your fingertips.

QR IN

THE NIKON F LENS MOUNT ASSURES SUPERIOR PERFORMANCE

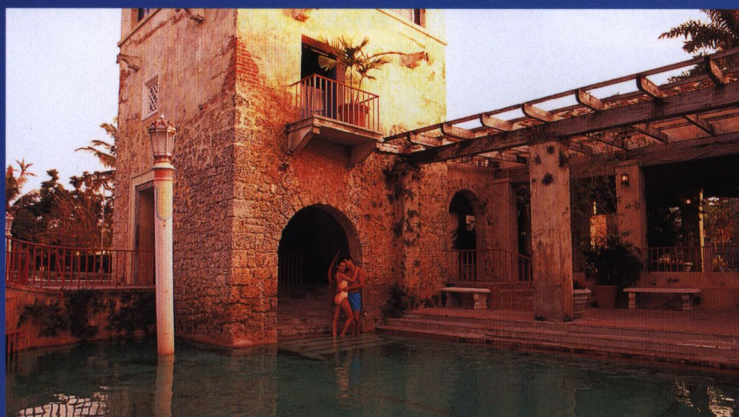
Nikon is a leader in lens design and manufacture. With optical glass from its own glassworks, superb designs, leading-edge innovations and the company's reputation for manufacturing quality, Nikkor lenses are respected worldwide. They bring their exceptional performance to the Pronea 6i.

Nikon designers integrated the full-size Nikon F lens mount into the compact Pronea 6i so that from the very first day it will have a big selection of autofocus lenses available—without the restrictions imposed by smaller mounts—yet with the exceptional quality and performance of AF Nikkor lenses.

Anyone who already owns an AF Nikkor or D-type AF

Nikkor can immediately enjoy the Pronea 6i with these lenses. New owners can choose the Pronea 6i and have a full assortment of optics immediately.

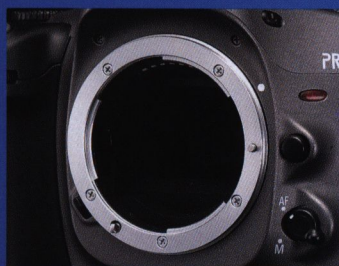
In addition to the full range of AF Nikkor lenses, Nikon has also designed additional lenses specially for the Pronea 6i—the high-quality IX-Nikkor 24-70mm f/3.5-5.6



20 mm



40 mm



Nikon F Mount





60-180mm f/4-5.6 and 20-60mm f/3.5-5.6. The compact, lightweight IX-Nikkor lenses are all D-type AF lenses. These lenses cover a wide range of picture-taking opportunities.

Lens selection — another important reason for choosing the Pronea 6i.

Focal length conversion

Since IX240 film differs in size from 135 film, the images obtained by the same lens are also different. The following table shows the approximate lens focal length at which the same picture angle can be obtained with the 135 and IX240 formats.



70mm



120mm



180 mm

CONVERSION TABLE OF FOCAL LENGTH

IX 240 format	20mm	24mm	60mm	70mm	100mm	180mm
135 format	25mm	30mm	75mm	87.5mm	125mm	225mm

AF NIKKOR LENSES

AF 20-35mm f/2.8D IF*1
 AF 24-50mm f/3.3-4.5D
 AF 24-120mm f/3.5-5.6D IF
 AF 28-70mm f/3.5-4.5D
 AF 28-80mm f/3.5-5.6D
 AF 28-85mm f/3.5-4.5*2
 AF 35-70mm f/2.8D
 AF 35-80mm f/4-5.6D
 AF 35-105mm f/3.5-4.5D IF
 AF 35-135mm f/3.5-4.5
 AF 70-210mm f/4-5.6D
 AF 75-300mm f/4.5-5.6
 AF 80-200mm f/2.8D ED

AF 80-200mm f/4.5-5.6D
 AF 18mm f/2.8D*3
 AF 20mm f/2.8D
 AF 24mm f/2.8D
 AF 28mm f/1.4D
 AF 28mm f/2.8D
 AF 35mm f/2D
 AF 50mm f/1.4D
 AF 50mm f/1.8
 AF 85mm f/1.4D IF
 AF 85mm f/1.8D
 AF 180mm f/2.8D ED-IF
 AF 300mm f/2.8 ED-IF*3

AF-S 300mm f/2.8D ED-IF*4
 AF 300mm f/4 ED-IF
 AF-I 400mm f/2.8D ED-IF*3
 AF-I 500mm f/4D ED-IF*3
 AF-S 500mm f/4D ED-IF*3
 AF-S 600mm f/4D ED-IF*3
 AF Fisheye 16mm f/2.8D*3
 AF Micro 60mm f/2.8D
 AF Micro 105mm f/2.8D
 AF Micro 200mm f/4D ED-IF
 AF DC 105mm f/2D
 AF DC 135mm f/2D

*1 Built-in speedlight cannot be used at a focal length shorter than 35mm, or if the subject is within 2.6 ft.

*2 Built-in speedlight cannot be used if the subject is within 4.3 ft. at a 28mm focal length.

*3 Built-in speedlight cannot be used.

*4 Built-in speedlight cannot be used if the subject is within 12.1 ft.



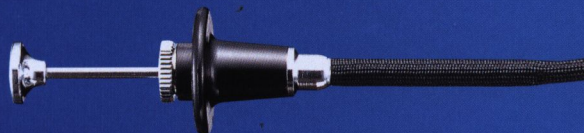


Nikon Speedlights

The Pronea 61's built-in Speedlight provides powerful, automatic operation. You can also choose other Nikon Speedlights like the SB-26 or SB-27 to give you extra features like bounce flash, zoom flash head, manual flash operation and more.

Nikon cable release

Nikon Cable Release AR-3 plugs directly into the Pronea 61's release terminal. Essential for slow shutter speeds, this cable release ensures reliable one-hand shutter release operation.



Nikon neck straps

These strong, reliable neck straps are just the right size. Choose the black AN-4B web-nylon strap, yellow AN-4Y/AN-6Y or wine-red AN-4W/QN-6W.

Nikon PRONEA

Pronea neck strap



Hot-shoe cover
(supplied with the product)

Nikon Close-up attachment lenses

These lenses offer a simple way to try your hand at close-up photography. Choose from models 0, 1, 2, 3T, 4T, 5T and 6T. Lenses with a "T" suffix are for use with telephoto lenses and feature a two-element construction.

Nikon filters

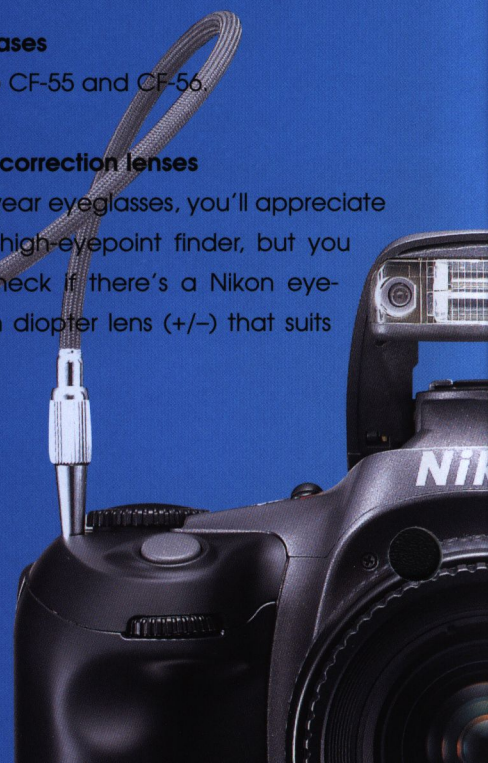
Lens filters can add a colorful, exciting dimension to your pictures. Since they enhance the results you get from your Nikkor lens, you should use only Nikon filters to get consistently great results.

Nikon camera cases

Choose from the CF-55 and CF-56.

Nikon eyepiece correction lenses

If you normally wear eyeglasses, you'll appreciate the Pronea 61's high-eyepoint finder, but you may want to check if there's a Nikon eyepiece correction diopter lens (+/-) that suits you.



Type of camera: Integral-motor autofocus IX240 single-lens reflex

Picture format: 16.7mm x 30.2mm (IX240 film format)

Usable film: IX240 (Advanced Photo System) film cartridge (16.7 x 30.2mm)

Information exchange system: Magnetic Information Exchange (Mag. IX) system

Print aspect ratio: H, C and P types available

Lens mount: Nikon F mount

Lens: IX-Nikkor and AF Nikkor lenses

Operation mode: BASIC and ADVANCED

Focus mode: Single Servo AF, Continuous Servo AF, and Manual with Electronic Rangefinder

Focus area: Wide and Spot selectable

Focus Tracking: Automatically activated when subject moves

Autofocus detection system: Nikon CAM274 autofocus module

Autofocus detection range: Approx. EV 0 to EV 20 (at ISO 200)

Autofocus lock: Possible once stationary subject is in focus in Single Servo autofocus

Electronic rangefinder: Available in Manual focus mode with lenses having a maximum aperture of f/5.6 or faster

Exposure metering: Three built-in exposure meters—3D Matrix, Center-Weighted and Spot

Metering range (at ISO 200 with f/1.4 lens): EV 0 to EV 20 in 3D Matrix and Center-Weighted, EV 4 to EV 20 in Spot

Exposure meter duration: Remains on for 8 sec. after switch is on or after removing finger from shutter release button

Exposure modes: Programmed Auto (Auto-Multi Program and Vari-Program), Shutter-Priority Auto, Aperture-Priority Auto and Manual; only Auto-Multi Program and Vari-Program are selectable in BASIC mode

Programmed auto exposure control: Camera sets both shutter speed and lens aperture automatically; Flexible Program possible

Shutter-priority auto exposure control: Aperture automatically selected to match manually set shutter speed

Aperture-priority auto exposure control: Automatically selected shutter speed to match manually set aperture

Manual exposure control: Both aperture and shutter speed are set manually

Vari-Program: Six kinds built-in: Portrait, Hyperfocal, Landscape, Close-Up, Sport, and Silhouette Programs; each has its own program line; Flexible Program possible

Quick Recall function: Using the QR button, user-selected or original camera settings can be recalled; up to three settings can be memorized

Exposure compensation: With exposure compensation button; ± 5 EV range, in 1/2 EV steps

Auto exposure lock: By pressing AE-L button while meter is on

Exposure bracketing: Three frames in 1/2 or 1 EV steps

Multiple exposure: Available

Shutter: Electromagnetically controlled vertical-travel focal-plane shutter

Shutter speeds: Lithium niobate oscillator-controlled speeds from 1/4000 to 30 sec. (in 1/2 step); electromagnetically controlled Bulb setting

Viewfinder: Fixed-eyelevel pentaprism high-eyepoint type; approx. 100% frame coverage for printed image area in H type (at 9.8 ft.); approx. 0.84x magnification with 50mm lens set at infinity

Eyepoint: Approx. 20mm

Focusing screen: Nikon new B-type BriteView screen III; fixed

Viewfinder information: LCD shows metering system, focus indication, exposure mode, shutter speed, aperture, electronic analog exposure display, exposure compensation value, flash/expo-

sure compensation mark; flash ready-light LED and print type indicators are also shown

LCD panel information: Vari-Program, shutter speed, aperture, exposure mode, Flexible Program, focus area, focus mode, film advance mode, multiple exposure, number of multiple exposure, flash sync mode, exposure/flash bracketing mark, exposure compensation, compensation value, frame counter, self-timer, title imprint, film type, print quantity, film indicator, film cartridge indicator, print type and battery power

LCD panel illumination: Push illumination button to activate

Film loading: Drop-in loading system; film automatically advances to the first blank frame after inserting cartridge

Film advance: In single-frame shooting mode, film automatically advances one frame when shutter is released; in continuous shooting mode, shots are taken as long as shutter release button is depressed; approx. 3.5 fps (3.3 fps with Focus Tracking)

Frame counter: Additive type; counts back while film is being rewound

Film rewind: Automatic rewind at the end of film roll; mid-roll rewind possible by pressing two film rewind buttons

Self-timer: Electronically controlled; 10 sec. duration; cancellable

Accessory shoe: Standard ISO-type hot-shoe contact;

ready-light contact, TTL flash contact, monitor contact; mount receptacle for SB-27/SB-26's Post-Mount System provided

Built-in TTL Speedlight: Guide number: 66 (ISO 200, ft.); flash coverage: 20mm or longer lens; Matrix Balanced Fill-Flash, Red-Eye Reduction, Slow Sync and Rear-Curtain Sync are possible

Flash synchronization: Up to 1/180 sec.

Flash recommended light: Lights up when flash is recommended

Flash ready-light: Lights up when flash is ready; blinks to indicate flash output level was full in previous shot

Flash output level compensation: From -3 to +1 EV, in 1/2 EV steps

Data recording function: Data displayed in the LCD panel with seven choices: Year/Month/Day, Year/Month/Day/Hour/Minute, Month/Day/Year, Month/Day/Year/Hour/Minute, Day/Month/Year, Day/Month/Year/Hour/Minute or No recording; 24-hour cycle with no AM/PM; built-in clock with timing accuracy within ± 90 sec. a month; power source for backup: one 3V lithium battery (CR2025 type)

Number of film rolls per set of fresh batteries

For autofocus operation using IX-Nikkor 24-70mm f/3.5-5.6 lens covering the full range from infinity (∞) to the closest distance and back to infinity (∞) before each shot, in Continuous Servo AF mode with film advance mode at continuous and a shutter speed of 1/125 sec. or faster.

	At 68°F (with 50% flash)	At 14°F (with 50% flash)
40-exp. film	100 (16)	50 (14)
25-exp. film	150 (25)	70 (20)

Power source: Two CR123A-type lithium batteries

Battery power confirmation: \blacksquare for sufficient power; \square indicates batteries are nearing exhaustion; blinking \square indicates batteries are just about exhausted; no indication mark appears when batteries are completely exhausted or improperly installed

Dimensions (W x H x D): Approx. 5.3 x 3.9 x 2.9 in.

Weight (without batteries): Approx. 19.8 oz.

All specifications apply with fresh batteries used at normal temperature (68°F).

Specifications and design are subject to change without notice.



Important!
High-quality processing ensures that your pictures will look the best. Always have your Pronea film processed at a certified photofinisher. Pronea uses only Advanced Photo System IX240 film cartridges.

Nikon®
We take the world's
greatest pictures.®
Yours.



© Nikon Inc., 1996
Nikon Inc., 1300 Walt Whitman Road, Melville, N.Y. 11747-3064, U.S.A.

Nikon on the Net

<http://www.nikonusa.com>
<http://www.klt.co.jp/Nikon>