

Nikon N60

35mm (135) Format
Single-Lens Reflex
Camera

See the difference
a Nikon makes.





How far can *you* go with the Nikon N60?

Is your old camera just gathering dust on the closet shelf? Do you doubt that it can give you the results you expect? Are you ready to take the next step toward making better, more beautiful and colorful pictures? Ones you'll be proud to display? If so, then we suggest you move to the new

Nikon N60 35mm Single Lens Reflex Camera.

Vacations, family events, travel, portraits, close-ups, wide shots, telephoto shots — Nikon N60 and a high-quality Nikkor lens can handle them all. Opt for totally automatic operation and make photos with ease. Or use the

Nikon N60



Nikon N60



Nikon N60 QUARTZ DATE

N60's full set of controls for personal picture-taking pleasure and creativity. For the Nikon N60 as features and performance that will more than satisfy you — like accurate or sharp autofocus, a selection of automatic and manual exposure control, and a built-in automatic flash

that will brighten your pictures. And the N60 does it all with Nikon quality and reliability.

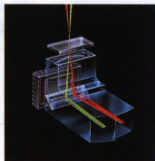
So if you're ready for great photography, choose the Nikon N60 and you'll see what a difference a Nikon makes. Nikon. We take the world's greatest pictures. Yours.

Just turn the dial and get Nikon-quality results.

[Exposure modes]

The advanced simplicity of the N60 is perhaps best shown in its easy-to-use exposure mode select dial. This large and highly legible dial gives you instant access to a selection of exposure modes that handle about any scene you'll encounter. Choose the General-Purpose Program mode, which is suited for virtually any picture-taking situation. Or try one of the five Vari-Program modes, offering control for specific situations.

Advanced AM200
AF module



General-Purpose



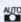
High-Performance New Autofocus System

The N60's new Auto-Servo AF is so advanced that it can detect whether a subject is stationary or moving, and also detects direction. According to the detected information, it automatically chooses to lock focus or activate focus tracking — either way, you're assured autofocus that works fast, accurately, and easily.

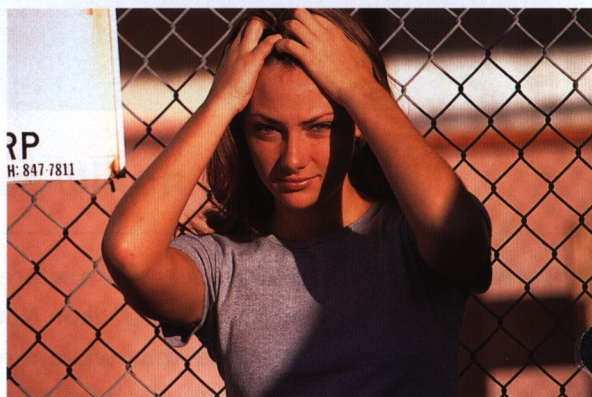


Built tough and reliable, the N60 features an aluminum die-cast chassis and metal film guide rails.



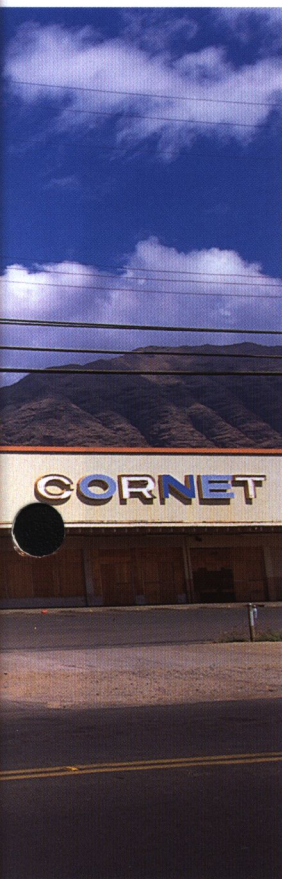
"Since I set the camera to  and was ready to shoot, I was able to get this shot of a classic car as it passed by." (Lens: AF Zoom-Nikkor 28-80mm f/3.5-5.6D)

Portrait



"I used Portrait mode here to make her face stand out from the background." (Lens: AF Zoom-Nikkor 70-300mm f/4-5.6D ED)

on the road.



General-Purpose Program

Use this mode when you want to take pictures for simple, point-and-shoot operation. Let autofocus with focus tracking take care of getting a sharp picture, and the Program Exposure control will handle exposure. Even if you use the built-in flash, it's all automatic. You'll get sharp focus and accurate exposures.

Vari-Program modes for automatic control with personal control

The Nikon N60 also comes with five special program modes to handle challenging subjects or scenes by making exposure or other adjustments automatically.



Portrait mode

With Portrait mode, your subject comes out sharply focused against a soft background for a beautiful effect.



Landscape mode

This captures distant scenes sharp and clear, for postcard-like landscape pictures.



Close-Up mode

Use this mode to take shots of flowers or other small objects up close. It focuses sharply on the main subject, while the background will be softly unfocused. It's the kind of effect you often see in great nature pictures.



Sport mode

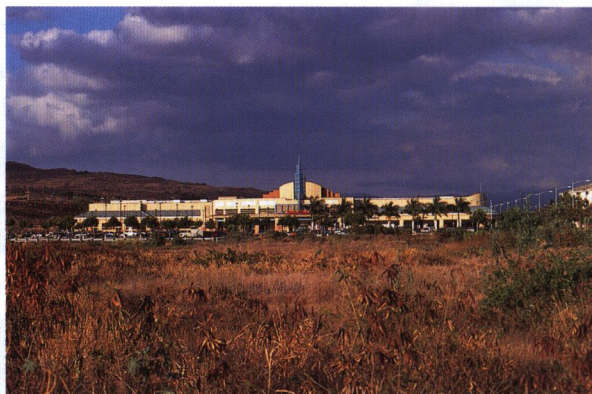
You can stop the action with Sport mode — it uses fast shutter speeds, and automatically changes to Nikon's Continuous Shooting mode and Focus Tracking.



Night Scene mode

Get great pictures of twilight scenes, cityscapes filled with neon lights and more. Shoot with flash and make a beautifully lighted portrait against the night lights. And it's all done automatically.

Landscape



"Landscape mode made this shot sharp from near to far." (Lens: AF Zoom-Nikkor 35-80mm f/4-5.6D)

Close-Up



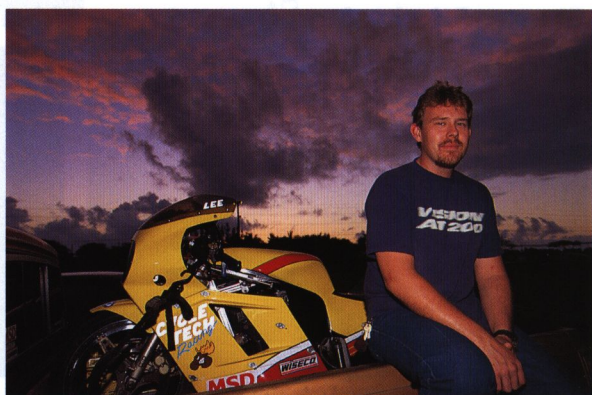
"I chose Close-Up mode to make the figure stand out from the other miniatures in the antique shop." (Lens: AF Micro-Nikkor 105mm f/2.8D)

Sport



"Continuous-Servo AF and a high shutter speed helped me to make this dramatic shot easily." (Lens: AF Zoom-Nikkor 70-300mm f/4-5.6D ED)

Night Scene



"Here, I used Night Scene mode with the flash to get a great shot of the twilight sky while keeping the subject naturally lit." (Lens: AF Zoom-Nikkor 28-80mm f/3.5-5.6D)



See what you can do — flexible exposure modes.

When you feel ready to flex your photographic skills, the N60's exposure modes make it easy. The four available modes — Program, Shutter preferred, Aperture preferred and Manual — let you create SLR-quality pictures the way you want by controlling the shutter speed and aperture combination.

A Aperture-Priority Auto



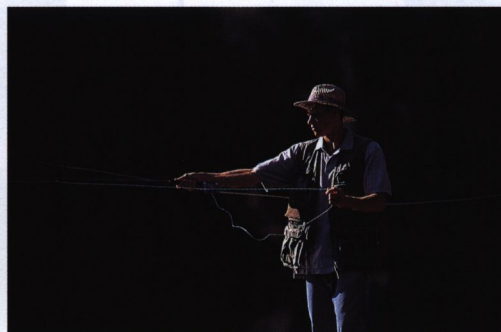
Aperture-Priority Auto with AF Nikkor 180mm f/2.8D ED-IF
"I used a wide f/2.8 aperture so that the background came out artistically blurred."

S Shutter-Priority Auto



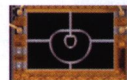
Shutter-Priority Auto with AF Nikkor 28-200mm f/3.5-5.6D IF
"By choosing a fast 1/1000 sec. shutter speed, I stopped the action in this scene cold."

M Manual



Manual exposure control used with an AF Nikkor 80-200mm f/4.5-5.6D
"I intentionally underexposed this shot to emphasize the subject by creating a black background in daylight."

[Exposure modes]



Matrix Sensor

3D Matrix Metering

The 3D Matrix Meter featured in the N60 uses a 6-segment sensor to achieve superior metering results even in complex lighting. The N60's built-in computer analyzes data including scene brightness and contrast — and subject distance when you use a D-type AF Nikkor lens — and makes calculations to ensure correct exposure.

P Auto-Multi Program



Auto-Multi Program with AF Zoom-Nikkor 24-120mm f/3.5-5.6D IF set at 24mm.

P Auto-Multi Program

In this mode, the N60 selects the exposure just like General-Purpose Program — with an important difference. It lets you adjust the shutter speed/aperture combination as you like. We call that Flexible Program because it lets you take control without losing the advantages of automatic operation.

S Shutter-Priority Auto

Choose higher shutter speeds to stop the action, or slower shutter speeds to indicate movement by deliberately blurring the moving subject.

A Aperture-Priority Auto

Use smaller aperture (larger f-number) to focus the scene near to far, or use larger aperture (smaller f-number) to make your subject stand out from the blurred background.

M Manual Exposure Control

For ultimate control, this mode lets you set both the shutter speed and aperture manually. Center-Weighted Metering is automatically selected in this mode, and the viewfinder's display guides you toward the exposure setting.

Nikon flash power when you need it.

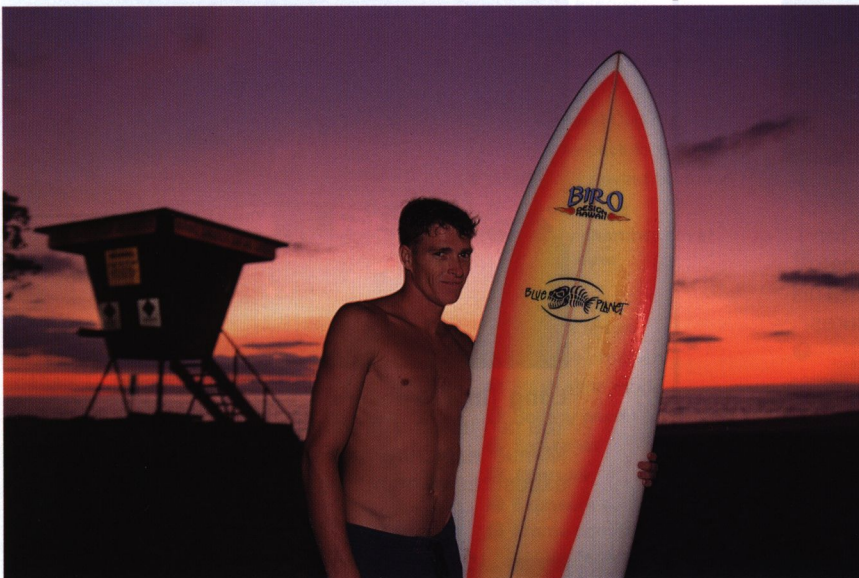
The N60 camera's built-in Speedlight is ready to help you get the shot, and if you're not sure if flash is needed, don't worry, because a flash symbol appears in the viewfinder LCD when flash is recommended. The built-in Speedlight covers lenses as wide as **28mm** and has a **guide number of 49** at ISO 100 (15 metric).

Matrix Balanced Fill-Flash

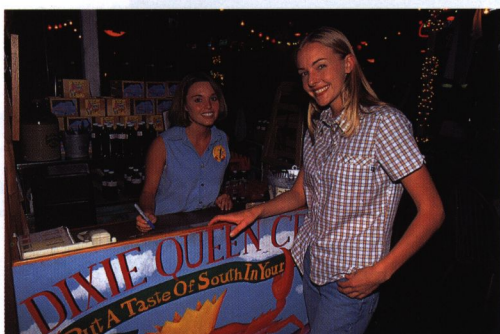
The N60's Matrix Balanced Fill-Flash automatically provides the right lighting for most of your shots. In low light the flash is balanced with the background's brightness, giving you an overall accurate exposure. Or you can use fill-in flash in brightly lit scenes to overcome harsh shadows that are typical in portraits. Nikon's Matrix Balanced Fill-flash is great for portraits, brings out details, and brightens shadows to bring out the color.



Slow Sync



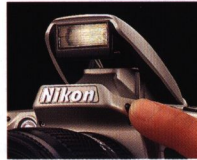
"Slow Sync flash helped me to get both this surfer and the beautiful sunset behind him."
(Lens: AF Nikkor 28-80mm f/3.5-5.6D)



Red-Eye Reduction

"I often use Red-Eye Reduction on indoor portrait shots."
(Lens: AF Nikkor 28mm f/2.8D)

[Flash]



Extensive flash shooting distance

The N60's built-in Speedlight boasts a large guide number of 49 at ISO 100 (15 metric). This gives you great TTL flash control.

TTL flash control range compared to other built-in flashes (with ISO 400 film, f/4)

N60's built-in Speedlight (GN 49*)	24.6 ft.
Built-in flash with GN 39*	19.7 ft.

*ISO 100 in feet.



"Even in daylight I can use the flash. Here I was able to eliminate the shadows in this person's face." (Lens: AF Zoom-Nikkor 35-80mm f/4-5.6D)

Slow Sync

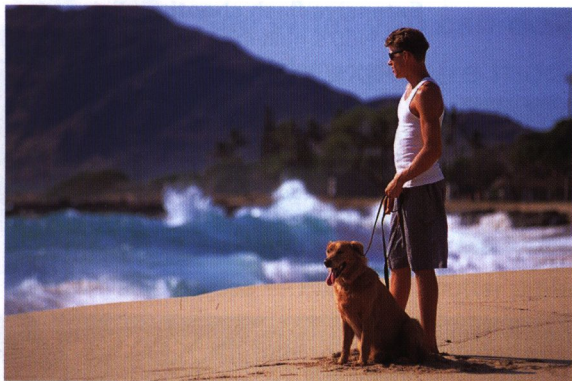
When you want to take beautiful flash shots at twilight or with an illuminated background, use Slow Sync flash. The N60's computer lets you make a picture at the slow shutter speeds necessary in these scenes.

Red-Eye Reduction

Choose this mode and the Red-Eye Reduction lamp lights, making the pupils in the subject's eyes smaller, effectively reducing red-eye. Use this feature with normal and Slow Sync and enjoy the improvement in your portrait photography.

*October 12,
the surfer at sunset.*





Focus Lock

When you focus on a stationary subject, the focus locks as long as you lightly press the shutter release button. This proves useful in autofocus shooting when you want to capture your subject off-center in the composition. (Not available in ∞ mode)



AF-Assist Illuminator

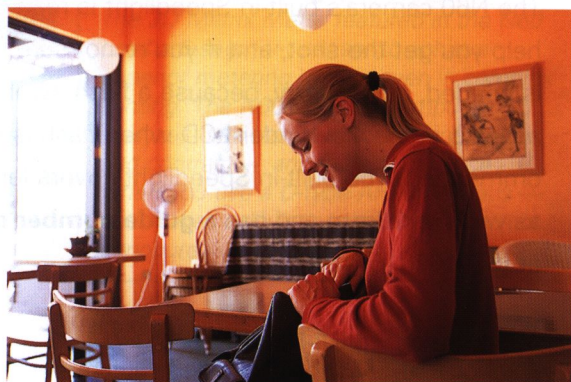
When ambient light is insufficient for autofocusing, the AF-Assist Illuminator automatically lights up the subject. This makes it possible to take sharply focused pictures even in total darkness.



Focus Tracking

The N60 features special autofocus software that can achieve sharp focusing even when the subject is moving at a constant speed, toward or away from the camera.

[Other Nikon Features & Camera Controls]



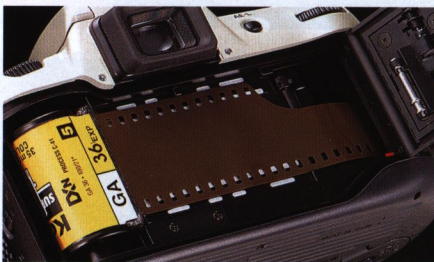
Auto Exposure Lock (AE Lock)

When you shoot in any auto exposure mode while pressing the AE-L button, the camera "memorizes" the metered exposure value. In this case, Center-Weighted Metering is automatically selected. This feature is ideal for situations where the user wants to change the composition or put creative exposure emphasis on a specific part of the picture.



Long Time Exposure

You can use the Time setting, included in the Manual exposure mode, to make creative long exposures of nighttime scenes.



Auto Film Operation

Loading, film advance and film rewind are all automatic. Mid-roll rewind is also possible. The film speed is automatically set for popular DX-coded films (ISO 25 to 5000).



Exposure Compensation

You can adjust exposure compensation values from -3 to +3 EV in increments of 1/2 EV to achieve different exposure effects.



Easy, Ergonomic Camera Operation

The N60 is designed for ease of use. The exposure mode dial and command dial exemplify this — giving you simple control of most camera operations.



Large LCD Panel

The large, top deck LCD panel provides confirmation of camera settings at a glance.



Diopter Adjustment Switch

A sliding switch lets you adjust the diopter from -1.5 to +1 dpt. so you can customize the viewfinder to suit your vision.

High-Eyepoint Finder



You can have your eye a comfortable 17mm (at -1 dpt.) from the finder eyepiece and still have a full view of the viewfinder.

Reliable Construction

The N60 is tough and reliable. The chassis is made of rugged aluminum die-cast and the film guide rails are crafted from durable metal.



Two-Button Reset

You can quickly and easily cancel all settings — such as the flash mode or exposure compensation value — by simultaneously pressing  and  buttons for over two seconds. This returns the N60 to its standard default settings.



Self-Timer

The self-timer offers a 10-second delay and an indicator even tells you to get ready for the shot.

Nomenclature

Camera body

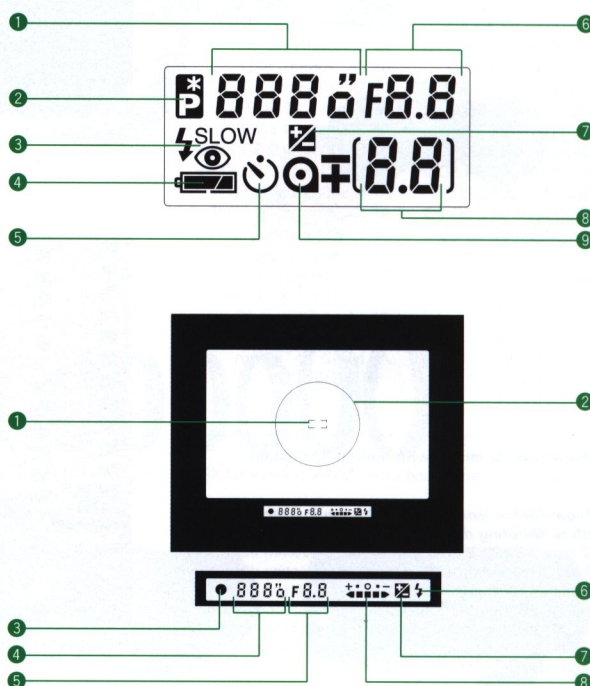
- 1 Camera strap eyelet
- 2 Focus mode selector
- 3 Speedlight lock-release button
- 4 AF-Assist Illuminator/Red-Eye Reduction lamp/Self-timer indicator
- 5 Main switch
- 6 Shutter release button
- 7 Exposure mode dial
- 8 Lens release button
- 9 Self-timer button
- 10 Built-in Speedlight
- 11 Accessory shoe
- 12 LCD panel
- 13 Exposure compensation button
- 14 Aperture button (in M mode)
- 15 Flash sync mode button
- 16 Film cartridge confirmation window
- 17 Rubber eyecup
- 18 Finder eyepiece
- 19 Diopter adjustment lever
- 20 AE-L (auto exposure lock) button
- 21 Command Dial
- 22 Camera back lock release
- 23 Mid-roll rewind button
- 24 Tripod socket
- 25 Battery chamber cover lock release

LCD panel

- 1 Shutter speed
- 2 Flexible program
- 3 Flash sync mode
- 4 Battery power
- 5 Self-timer
- 6 Aperture
- 7 Exposure compensation
- 8 Frame counter/exposure compensation value
- 9 Film loading

Viewfinder indications

- 1 Focus brackets
- 2 12mm reference circle for Center-Weighted Metering
- 3 In-focus indicator
- 4 Shutter speed
- 5 Aperture
- 6 Flash ready-light
- 7 Exposure compensation mark
- 8 Electronic analog display



Access to the finest — AF Nikkor lenses

When you choose the Nikon N60 you gain access to the Nikon family of AF Nikkor lenses and accessories. Only AF Nikkors bring out the best from your N60. Try an AF Zoom-Nikkor and see how versatile one lens can be. Discover how a telephoto can bring you up close, or how a wide-angle Nikkor lets you take in the big picture. Whichever you choose, you'll have the confidence of knowing you're shooting with the best.

Note:

1. AI-type Nikkors can be used. However, the camera's exposure meter will be canceled. Set exposure mode to Manual.
2. Autofocus is not possible with AF-S and AF-I Nikkor lenses. Please focus manually with these lenses.



List of AF Nikkors

AF 20-35mm f/2.8D IF	AF 50mm f/1.8
AF 24-50mm f/3.3-4.5D	AF 85mm f/1.4D IF
AF 24-120mm f/3.5-5.6D IF	AF 85mm f/1.8D
AF 28-70mm f/3.5-4.5D	AF DC 105mm f/2D
AF 28-80mm f/3.5-5.6D	AF DC 135mm f/2D
AF 28-200mm f/3.5-5.6D IF	AF 180mm f/2.8D ED-IF
AF 35-70mm f/2.8D	AF 300mm f/4 ED-IF
AF 35-80mm f/4-5.6D	AF-S 300mm f/2.8D ED-IF
AF 35-105mm f/3.5-4.5D IF	AF-S 400mm f/2.8D ED-IF
AF 70-210mm f/4-5.6D	AF-S 500mm f/4D ED-IF
AF 70-300mm f/4-5.6D ED	AF-S 600mm f/4D ED-IF
AF 80-200mm f/2.8D ED	AF-I Teleconverter TC-14E
AF 80-200mm f/4.5-5.6D	AF-I Teleconverter TC-20E
AF 18mm f/2.8D	AF Fisheye 16mm f/2.8D
AF 20mm f/2.8D	AF Micro 60mm f/2.8D
AF 24mm f/2.8D	AF Micro 105mm f/2.8D
AF 28mm f/1.4D	AF Micro 200mm f/4D ED-IF
AF 28mm f/2.8D	AF Micro 70-180mm
AF 35mm f/2D	f/4.5-5.6D ED
AF 50mm f/1.4D	

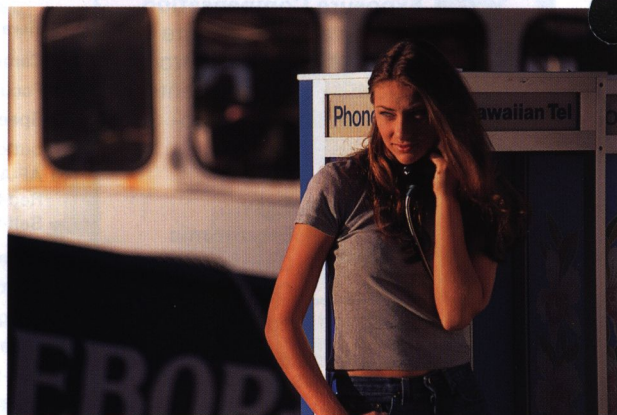
Usable AF Nikkor lenses with built-in Speedlight

28 to 200mm CPU lenses and an AF Nikkor 300mm f/4 ED-IF lens

AF Zoom-Nikkor lenses with limitation in usable focal length or shooting distance.

AF 20-35mm f/2.8D IF: Not usable; AF 24-120mm f/3.5-5.6D IF: 35mm focal length at 4.9 ft. or longer shooting distance or 50-70mm at 3.3 ft. or longer (not usable at 28mm focal length); AF 28-200mm f/3.5-5.6D IF: 35mm or longer focal length; AF 35-70mm f/2.8D: 50mm or longer focal length; AF Micro 70-180mm f/4.5-5.6D ED: 70mm focal length at 4.9 ft. or longer shooting distance or 85mm at 3.3 ft. or longer.

[AF Nikkor Lenses]



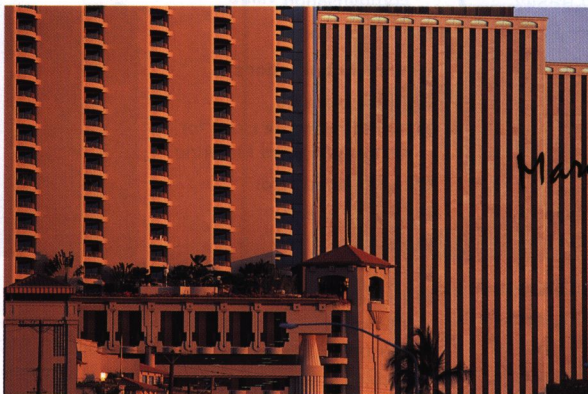
AF Nikkor 180mm f/2.8D ED-IF

"A large aperture of f/2.8 gives this telephoto portrait shot a professional-quality look."



AF Fisheye-Nikkor 16mm f/2.8D

"The fisheye lens allows me to shoot with a unique perspective."



AF Zoom-Nikkor 70-300mm f/4-5.6D ED

"This high-power telephoto zoom lens lets me pull distant subjects in up close for easy shot composition."

March 2, last shot from the hotel.



When you're ready for more — Nikon accessories.

Nikon Neckstraps

Strong and reliable, a Nikon strap is the obvious choice for your Nikon camera.

Nikon Camera Cases

The CF-49 will fit and protect the N60 plus AF 28-80mm f/3.5-5.6D, AF 35-105mm f/3.5-4.5D IF or any smaller lens. For the AF 35-70mm f/2.8D, AF 70-300mm f/4-5.6D ED or any smaller lens, choose the CF-50.

Nikon Speedlights

For more flash versatility, you can choose an optional accessory Nikon Speedlight like the SB-28 or SB-27. These Speedlights let you explore bounce flash, manual flash operation and more.

TTL Remote Cord SC-17

Connects optional Nikon Speedlights with the N60 for remote flash shooting.

Wireless Slave Flash Controller SU-4

Multiple flash photography is an exciting way to make still more great pictures, and you can do it with the N60 and Nikon accessories. When connected to an optional Nikon Speedlight, you can use wireless remote TTL flash control, with the N60's built-in Speedlight as a master unit.

Nikon Filters

Nikon offers a range of filters including NC Filters to protect the lens and Soft Focus Filters or Circular Polarizing Filters for special effects.



Shot with SB-28 connected via TTL Remote Cord SC-17 and positioned above the subject for remote flash effect.

Nikon Close-up Accessories

For the ultimate in close-up sharpness and focusing to life-size images on film, try an AF Micro-Nikkor lens, or start with a Nikon close-up attachment, available in 0, 1, 2, 3T, 4T, 5T and 6T versions for use with a variety of Nikkor lenses.

[Accessories]



Close-Up Attachment Lenses



AF Micro-Nikkor 60mm f/2.8D



AF Micro-Nikkor 105mm f/2.8D



AF Micro-Nikkor 200mm f/4D ED-IF



AF Zoom-Micro Nikkor
70-180mm f/4.5-5.6D ED

Nikon N60 Specifications

Type of camera: Integral-motor autofocus 35mm single-lens reflex (SLR) with built-in TTL Speedlight

Picture format: 24 x 36mm [standard 35mm (135) film format]

Lens mount: Nikon F mount

Lenses: AF Nikkor lenses, AI-P-type Nikkor lens. IX-Nikkors cannot be used

Focus modes: Autofocus (AF) or Manual (M)

Autofocus: Auto-Servo AF: automatically chooses Single-Servo AF or Continuous-Servo AF operation according to the subject status, i.e. stationary or moving (including directional information)

Note: Continuous-Servo AF is automatically selected when exposure mode is set to ∞

Autofocus detection system: TTL phase detection system using Nikon Advanced AM200 autofocus module; AF-Assist Illuminator provided

Autofocus detection range: Approx. EV -1 to 19 (at ISO 100)

Autofocus lock: Focus is locked when shutter release button is lightly pressed and stationary subject is in focus in Auto-Servo AF

Focus tracking: Automatically activated with a moving subject

Exposure modes: \square : General-Purpose Program, P: Auto-Multi Program (Flexible Program possible), S: Shutter-Priority Auto, A: Aperture-Priority Auto, M: Manual, and five Vari-Program modes (Σ : Portrait, \square : Landscape, \circ : Close-Up, ∞ : Sport, \square : Night Scene)

Programmed Auto exposure control: Both shutter speed and aperture are set for the following modes: \square , P, Σ , \square , \circ , ∞ , and \square

Shutter-Priority Auto exposure control: Aperture automatically selected to match manually set shutter speed in S mode

Aperture-Priority Auto exposure control: Shutter speed automatically selected to match manually set aperture in A mode

Manual exposure control: Both aperture and shutter speed are set manually in M mode

Shutter speed/aperture adjustment: Rotating the Command Dial changes shutter speed in S and M modes or aperture value in A mode in 1/2 EV steps. To change aperture value in M mode, rotate the Command Dial while pressing the aperture button

Auto exposure lock: Available by pressing the AE-L button while the exposure meter is on

Exposure compensation: With exposure compensation button; ± 3 EV range, in 1/2 EV steps (in P, S, A and M mode)

Exposure metering: 3D Matrix: with D-type AF Nikkor; Six-segment Matrix: with non-D-type AF Nikkor, AI-P Nikkor; Center-Weighted: in Manual exposure mode or with Auto Exposure Lock

Exposure metering range: EV 1 to 20 at ISO 100, 50mm f/1.4 lens

Exposure meter switch: Activated by turning on power, lightly pressing shutter release button; stays on for 5 sec. after removing finger from button, or 2 sec. after releasing shutter

Shutter: Electronically controlled vertical-travel focal-plane shutter

Shutter release: Electromagnetic

Shutter speeds: In \square , P, A, Σ , \square , \circ , ∞ , \square : 30 to 1/2000 sec. automatically set. In S, M: 30 to 1/2000 sec., Long Time Exposure (only be selected in M)

Viewfinder: Fixed-eyelevel pentaprism high-eyepoint type; approx. 0.69X to 0.74X magnification with 50mm lens set at infinity; approx. 90% frame coverage

Diopter adjustment: -1.5 to +1.0 diopter

Eyepoint: Approx. 17mm

Focusing screen: Fixed Nikon Clear Matte Screen II with central focus brackets for autofocus operation

Viewfinder information: Focus indication (in-focus indication and AF impossible warning), FEE warning, Err warning, F-- warning, exposure value (shutter speed, aperture), exposure warning, electronic analog display, exposure compensation, focus brackets, Center-Weighted Metering area, flash ready-light (charged indication, full output warning and flash recommended)

Viewfinder illuminator: Automatically activates when exposure meter is on

Film speed range: ISO 25 to 5000

Film speed setting: Automatically set to ISO speed of DX-coded film used



Nikon N60 QUARTZ DATE

Film loading: Film automatically advances to first frame when camera back is closed

Frame counter: Digital display in LCD panel; additive type; counts back while film is being rewound

Film advance: Film automatically advances one frame when shutter is released; in ∞ mode, shots are taken as long as shutter release button is depressed; shooting speed: approx. 1 fps

Film rewind: Film automatically starts to rewind at the end of the film roll; rewind speed: approx. 17 sec. with 36-exposure film or approx. 14 sec. with 24-exposure film; mid-roll rewind possible

Self-timer: Electronically controlled; timer duration: 10 sec.; cancelable

Reflex mirror: Automatic, instant-return type

Accessory shoe: Standard ISO-type with hot-shoe contact, ready-light contact, TTL flash contact, monitor contact; mount receptacle for Posi-Mount system provided

Built-in TTL Speedlight: Activated by pressing Speedlight lock-release button; guide number: 49 (at ISO 100, ft.); angle of coverage: 28mm lens or longer lens with some limitations (see the list on page 10); approx. 4 sec. recycling time

Flash synchronization speed: 1/125 sec. or slower

Automatic Balanced Fill-Flash: Possible with built-in TTL Speedlight or Nikon dedicated Speedlights such as SB-28, SB-27, SB-23, SB-22s, and SB-16B; Matrix Balanced Fill-Flash in Auto exposure modes; Center-Weighted Fill-Flash in Manual exposure mode

Standard TTL flash: Activated when using a non-CPU lens

Flash ready-light: When Speedlight is off: blinks when using flash is recommended; when Speedlight is on: lights up when built-in Speedlight or Nikon dedicated Speedlight is ready to fire; blinks after shooting to warn

of insufficient light for correct exposure

Power source: Two CR123A or DL123A-type lithium batteries

Battery power confirmation: \square for sufficient power; \square indicates batteries are nearing exhaustion; blinking \square indicates batteries are just about exhausted; no indication/symbol appears when batteries are completely exhausted or improperly installed

Number of 36-exposure film rolls per fresh battery (using AF Zoom-Nikkor 35-80mm f/4-5.6D)*:

	At 68°F	At 14°F
Without flash	Approx. 65	Approx. 38
With flash for half of all exposures	Approx. 16	Approx. 10

*After lightly pressing the shutter release button for 5 sec., autofocus operation covers the full range from infinity (∞) to the closest distance and back to infinity (∞) before each shot. With a shutter speed of 1/125 sec. or faster. After the exposure meter automatically turns off (2 sec., or 5 sec. with flash), the same operation follows for the next shot.

Body finish: Silver (N60) or black (N60 QUARTZ DATE)

LCD panel information: Shutter speed, aperture, flash sync mode, film speed, exposure compensation, frame counter/compensation value, FEE warning, Err warning, F-- warning, film loading, self-timer, battery power and Flexible Program

Camera back: Hinged back with film cartridge confirmation window; unchangeable

Dimensions (W x H x D): Approx. 5.8 x 3.8 x 2.7 in. (N60), 5.8 x 3.8 x 2.8 in. (N60 QUARTZ DATE)

Weight (body only): Approx. 20.3 oz. (N60), 20.6 oz. (N60 QUARTZ DATE)

Date/time imprint function (For N60 QUARTZ DATE only)

Display mode: Year/Month/Day, Day/Hour/Minute, No Imprint, Month/Day/Year and Day/Month/Year; built-in clock: 24-hour type with timing accuracy within ± 90 seconds a month; leap year adjustment until 2019

Usable film: ISO 32 to 3200 DX-coded film

Power source: One 3V lithium battery (CR2025 type)

Battery life: Approx. 3 years (May vary depending on extent of imprint use, film speed in use, etc.)

All specifications apply when fresh CR123A-type batteries are used at normal temperature (68°F).

Specifications and designs are subject to change without any notice or obligation on the part of the manufacturer.



©1998 Nikon Inc.
Nikon Inc., 1300 Walt Whitman Road, Melville, N.Y., 11747-3064, U.S.A.
<http://www.nikonusa.com>
<http://www.nikon.co.jp/photo-e>

Nikon®
We take the world's
greatest pictures.®
Yours.

