

1 1/2
11 JULY 1935



ENSIGN MIDGET

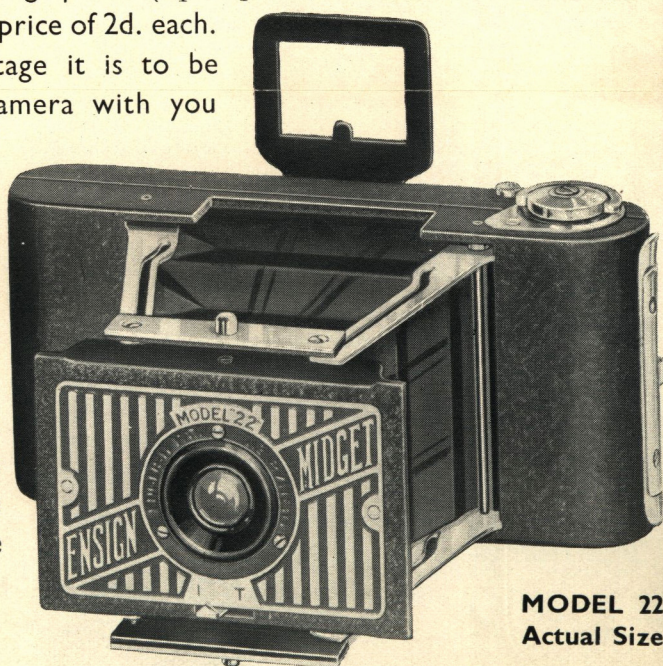
Everybody's Camera - ALL the time.



You get full-size pictures like these with the marvellous "ENSIGN MIDGET"

Though it is so small that it fits easily into the waistcoat pocket or the handbag, you can get large prints ($2\frac{1}{4} \times 3\frac{1}{4}$ size) from ENSIGN MIDGET negatives at the usual price of 2d. each. What a great advantage it is to be able to take your camera with you everywhere and to feel that it is not a burden. Always ready for use, and always sure to give you the best results.

It is the photographic marvel of the day, and five models are available at the most reasonable prices.



MODEL 22
Actual Size

22/-

33/-

55/-

Obtainable from
your Local Dealer

The
Great
Little
Handful

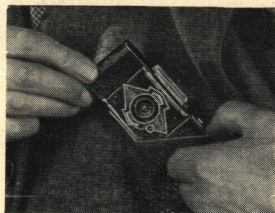
Full Details of Models overleaf

For every occasion!

ENSIGN MIDGET fits easily
in handbag or waistcoat pocket

You don't have to *carry* an Ensign Midget. You take it along with you just as you would a packet of cigarettes, and there it is, ready to hand, whenever the chance of a good picture presents itself. And the unexpected picture is very often the best.

Even though you may already have a bigger camera you will find the Ensign Midget a great asset to you. It is *the* camera for every occasion. You will never lose a good picture if your Ensign Midget is always with you.



PRICES

MODEL "22" (Illustrated overleaf)

A new popular model, fitted with single lens and Everset T. and I. shutter. All-metal body. Collapsible eye-level view-finder. Complete in patent leatherette slip case.

22/-

MODEL "33"

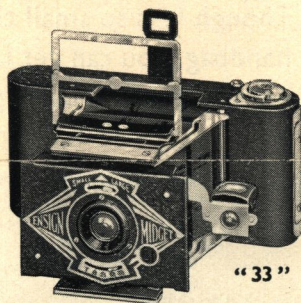
All-Distance lens and Everset 3-speed and T. and I. shutter. Collapsible eye-level view-finder, and waist-level finder also, pivoted for upright and landscape pictures. Complete in leather slip case.

33/-

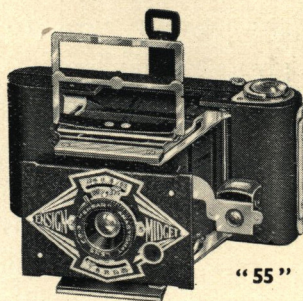
MODEL "55"

A very fine model, with Ensar f/6.3 anastigmat lens, and Everset 3-speed and T. and I. shutter. View-finder equipment as in Model "33". Complete in leather slip case.

55/-



"33"



"55"

SILVER JUBILEE MODELS

Specially designed to commemorate the jubilee year. Handsome silver finish.

MODEL S/33

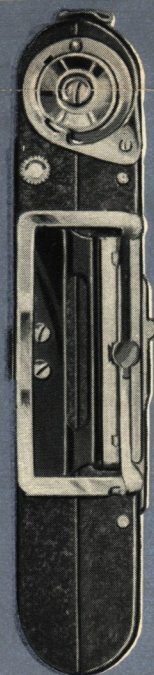
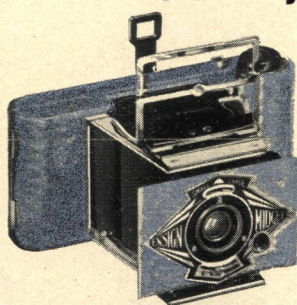
Equipment as Model "33". Complete in grey leather slip case.

33/-

MODEL S/55

Equipment as Model "55". Complete in grey leather slip case.

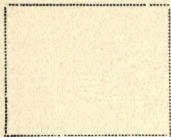
55/-



Actual width—
no wider than a
sixpence



Large Prints
like this cost
only **2d.** each



**NEWS of a
Great Little
Handful**