

THORNTON-PICKARD

1907 ABRIDGED CATALOGUE.

Containing Descriptions and Prices of:

NEW STAND CAMERA OUTFITS.

- New 1907 "Royal Ruby Triple Extension" *Page 235*
New 1907 "Imperial Triple Extension" .. *Page 241*
New 1907 "Imperial Perfecta" *Page 242*
New 1907 "College" *Page 244*
New 1907 "Tribune" *Page 245*

NEW HAND CAMERA SETS.

- New 1907 "Folding Ruby" *Page 246*
New 1907 "Nimrod Automan" Series, *Page 247 to 250*

CAMERAS AND SHUTTERS

FOR EVERY CLASS OF WORK.

The Thornton-Pickard Manufacturing Co. Ltd.,
ALTRINCHAM.

TERMS OF BUSINESS.

RETAIL ORDERS. The prices in this Catalogue are strictly net. It is respectfully requested that all orders be accompanied by remittance unless references have previously been given and an account opened.

REMITTANCES. Cheques or Post Office Orders to be made payable to the **Thornton-Pickard Manufacturing Co. Limited**, and may be crossed **Lloyds Bank, Ltd.** P.O. Orders should be made payable at **Altrincham**. Postage Stamps may be used for the payment of small amounts. Foreign Orders are payable by P.O. Orders at **Altrincham**, or by Draft on a London or Manchester Bank.

ACCOUNTS. Monthly statements are rendered Nett, and are payable **without any further deduction** on or before the 15th of the month following date of Invoice.

"ON APPROVAL." All Goods made by the **Thornton-Pickard Manufacturing Co., Limited**, may be obtained through any dealer in Photographic Apparatus, or they will be sent direct on "on approval" terms, if remittance for the amount accompanies order. The goods to be returned, carriage paid, within three days, if not approved.

ELECTROS. Electros of any of the **Thornton-Pickard** specialities are sent on application for inclusion in Dealers' Catalogues, at a nominal charge for each, according to size. Upon return of the Blocks this charge is credited in full.

CARRIAGE. Carriage will be paid on all prepaid retail orders within the British Isles, and on Foreign prepaid retail orders to port of shipment. All small parcels are sent per parcel post, and the larger ones by passenger train unless otherwise ordered.

PACKING. Experienced packers only are employed, and every care is taken to ensure safe transit. We do not, therefore, hold ourselves responsible for any loss or damage that may occur after the goods leave our premises. Packing boxes are charged at the lowest rate and are not returnable.

INDEX.

<i>Page.</i>		<i>Page.</i>	
224..	Terms.		
	SHUTTERS.		CAMERAS.
227—	"Royal" Time & Inst. Shutter, New Pattern.	240..	"Crown" Camera Outfit.
228..	Time and Inst. Standard Pattern.	241..	New "Imperial Triple Extension" Complete Outfit.
228..	" Aluminium "	242..	"Imperial Perfecta" Complete Outfit.
228..	" Behind Lens "	243..	"Imperial Focal Plane" Complete Outfit.
229..	" Stereoscopic "	244..	"College" Complete Outfit.
229..	" Behind Lens Patt.	245..	"Tribune" Complete Outfit.
229..	Snap Shot Shutter.		HAND CAMERAS.
230..	Studio "	246..	"Folding Ruby."
230..	Extra Rapid "	248..	"Nimrod," No. 1.
230..	Foreground "	249..	"Nimrod," No. 2 and 3.
230..	Special "	250..	"Nimrod," No. 4.
231..	Panoptic Between Lens Shutter.	251..	"Rotator."
232..	Focal Plane Shutter (Original Model).		ACCESSORIES.
232..	" " (New Model).	252..	Camera Cases.
	ACCESSORIES.	258..	Lenses.
233..	Patent Time Exposure Valve and	262..	Stands, Negative Holder and Film Carriers.
234..	Shutter Releases. (Compressor).	236..	Price List, "Royal Ruby Triple" Outfits.
	CAMERAS.	254..	Price List, Cameras and accessories.
235..	"Royal Ruby Triple Extension."	250..	" Shutters and "
237..	"Ruby" Camera.	257..	" Focal Plane Shutters.
238..	"Amber" Camera.	261..	Plateholders, etc.
239..	"Special Ruby."		

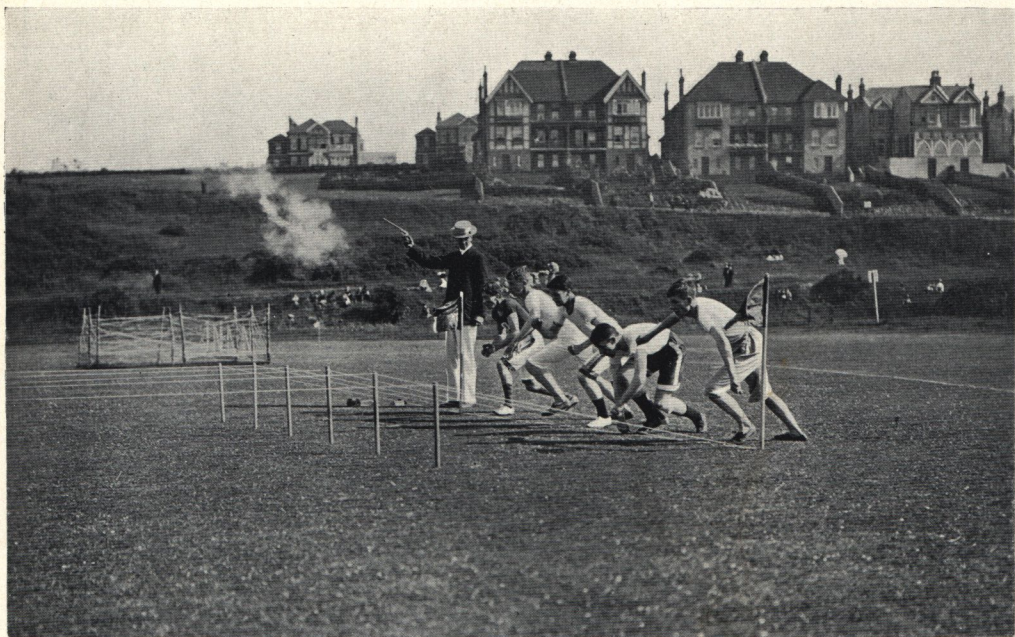
Complete Catalogue, Published in January, post free.

The THORNTON-PICKARD MANUFACTURING. Co. Ltd., Altrincham.



Exposure 3 seconds. "THE LAST LEAVES OF AUTUMN." DAN DUNLOP,
Motherwell, N.B.

*Taken with a Thornton-Pickard "Imperial" Camera, Shutter
fitted with Time Exposure Valve.*



Exposure $\frac{1}{500}$ second.

THE START—FLAT RACE.

HARRY CROSS, St. Leonards-on-Sea.

Taken with a Thornton-Pickard New Model Focal Plane Shutter.

THORNTON-PICKARD PATENT NEW & IMPROVED PATTERN

OF
“ROYAL” TIME AND INSTANTANEOUS **SHUTTER.**



Automatic Release of Spring Tension for Time Exposures.

WITH ALL FITTINGS INSIDE THE BOX.

The Acme of Perfection in Photographic Roller Blind Shutters Automatic Release of Spring Tension for Time Exposures.

Finger Release, Tension Release, and Changing Arrangement from Instantaneous to Time Exposures, all controlled by one simple mechanical device.

Pneumatic and Finger Releases. Before and Behind Lens Patterns. Simple, convenient, and efficient in working.

Wear and tear reduced to a minimum. An up-to-date, reliable, and perfect shutter.

A vast improvement upon any previous pattern.

Indispensable to every earnest photographic worker.

Particulars of smallest size :

Instantaneous Speeds from $\frac{1}{15}$ th to $\frac{1}{60}$ th sec.

Time Exposures of any duration.

Short Time Exposures $\frac{3}{8}$, $\frac{1}{2}$, $\frac{3}{4}$, 1, 2, 3 secs. (with valve.)

Dimensions :

$3\frac{3}{8} \times 2\frac{3}{8} \times 1$ " thick including all projections.

Price, from 19/-

Including Speed Indicator.

Time Exposure Valve (if required) 5/- extra.

A NEW SHUTTER, GREATLY IMPROVED AND VASTLY SUPERIOR

TO ANY PATTERN PREVIOUSLY OFFERED.

Entire working of Shutter practically controlled by one simple mechanical device.

THE new "ROYAL" Shutter is a most important advance upon its predecessor. Not only are **ALL FITTINGS INSIDE SHUTTER BOX**, covered and protected, but the introduction of a new patented device, simple and ingenious, makes the Shutter **the most convenient in use of any type** on the market. **For Time Exposures** the Sliding Knob marked "Lever Release" in above engraving is pushed towards the letter T. This one movement alters the Shutter for "Time," and simultaneously releases the Driving Spring, allowing it to run down to the lowest tension **suitable for a Time Exposure.**

Thus all "jar" or shock to the mechanism of the Time Arrangement is **automatically prevented**, and the wear and tear on the working parts reduced to a minimum. Pressure on this same Sliding Knob also acts as Finger Release. This triple-acting device controls the most important movements in the Shutter, and makes its working **simple in the extreme.**

PRICES. Speed Indicator included.	SIZE. To fit on a Lens Hood or Tube up to inches diam				
	1½	1¾	2	2½	
Before Lens (New Model)	19/-	19/6	20/-	23/6	26/6
Behind Lens (do.)	20/-	20/6	21/6	25/-	28/-
Before Lens (Original Model)	17/-	17/6	18/-	21/-	24/-
Behind Lens (do.)	18/-	18/6	19/6	22/6	25/6

New Patent Disappearing Cord, 3/6 extra. Patent Time Exposure Valve, 5/- extra.

THORNTON-PICKARD PATENT Time & Instantaneous Shutter



With SPEED INDICATOR.

This Shutter is the one recommended for general work, next to the "Royal." The Standard Pattern is constructed of mahogany, and beautifully finished. It can be fitted either on the Hood or Tube of the Lens.

The Behind Lens Pattern is intended to be screwed to the Camera Front, the Lens being mounted on the Detachable Front Panel, with which this pattern is fitted.

Since its introduction, this SHUTTER has won **GOLDEN OPINIONS** in all parts of the World.

It has ably maintained its position as being a most reliable and efficient Shutter in which respects it is equalled only by the Thornton-Pickard "Royal" pattern.

The **ONLY** Roller Blind SHUTTER capable of giving (with Patent Time Exposure Valve) :—

SHORT "TIME" EXPOSURES of $\frac{1}{8}$, $\frac{1}{4}$, $\frac{1}{2}$, and 1, 2, and 3 seconds.

INSTANTANEOUS EXPOSURES up to 1/90 second, in the two smaller sizes. Larger sizes work proportionately slower.

PROLONGED TIME EXPOSURES of any duration.

Equal Illumination all over the Plate. Absolutely without Vibration.

The Patent Time Exposure Valve,

As shewn in engraving, by means of which Short Time Exposures of $\frac{1}{8}$, $\frac{1}{4}$, $\frac{1}{2}$, 1, 2, and 3 seconds may be given automatically, is strongly recommended. It can be fitted to any pattern of Thornton-Pickard Time & Instantaneous Shutter.

PRICE 5/- extra.

A USEFUL
AND . . .



PRACTICAL
ADJUNCT.



New Patent Disappearing Cord.

In this improved device the Cord runs back into the Shutter Box after the blind is set either for focussing or exposure, thus obviating all risk of its becoming entangled with the mechanism when operating in a high wind. Fitted to new Shutters, 3/6; to Shutters previously supplied, 5/-

PRICES.	SIZE, to fit on a Lens Hood or Tube up to inches diam.								
	1½	1⅝	2	2½	3	3½	4	4½	5
Speed Indicator included.									
Standard Pattern	14/6	15/-	16/-	18/-	21/-	25/-	30/-	35/-	38/-
Behind Lens.....	15/6	16/-	17/6	19/6	22/6	26/6	31/6	36/6	39/6
Aluminum Pattern	12/6	13/6	15/6	18/-
„ Behind Lens	13/6	14/6	16/6	19/-

Patent Time Exposure Valve (as illustrated above), 5/- extra.

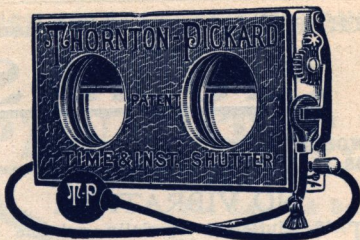
The Speed Indicator, an attachment showing at what speed Shutter is working, is now fitted to all Thornton-Pickard Shutters without extra charge.

Stereoscopic Shutters.

Standard Pattern.

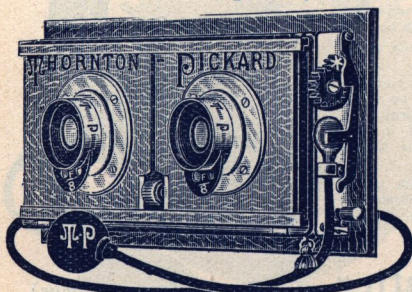
THIS Shutter is the same in principle as the Standard Pattern described on the previous page. It is made to fit on either the hoods or tubes of the lenses, and will give in the two smallest sizes instantaneous exposures up to 1/90th of a second, and time exposures of any duration.

Patent Time Exposure Valve can also be fitted, 5/- extra.



Behind Lens Pattern.

THIS is a special form of the above Shutter to be attached to camera front. The Lenses are mounted upon a detachable panel that fits into the front of the Shutter. This detachable panel can be removed when it is desired to substitute another Lens. The opening in the blind being the full width of the Shutter permits the use of either a pair of Lenses for Stereoscopic work, or a single Lens opposite the centre of the plate for ordinary views.



PANEL WITH ADJUSTABLE CENTRES.

IN this pattern the panel carries two smaller panels to which the lens flanges are attached. By rotating a small milled disc the distance between the centres can be varied from 2 3/8 to 3 1/2 inches. See illustration.

THE TIME EXPOSURE VALVE (see page 228), which enables the short exposures of 1/8, 1/4, 1/2, and 1, 2 and 3 seconds, to be given automatically, can be fitted to either pattern Stereoscopic Shutter. Price 5/- extra.

SNAP SHOT SHUTTER (PATENT).

AS its name implies, this is an Instantaneous Shutter. It has the merit of great simplicity, coupled with a great range of speed, giving in the two smallest sizes, exposures from 1/15th of a second up to 1/90th.

For all kinds of Instantaneous Subjects.
It is the simplest, cheapest and most efficient.
It is well made and beautifully finished.



SIZE, to fit on a Lens Hood or Tube up to inches dia.	1 1/2	1 5/8	2	2 1/2	3
Snap Shot, Inst. only, Mahogany Pattern	10/-	10/-	12/-	15/-	20/6
" " Aluminium " 	9/-	9/-	10/6	13/6	
" " Either Pattern, without Indicator	5/-	5/-	6/6	8/-	
Stereoscopic Time & Inst., at 3in. or 3 1/2 in. centres.	20/-	21/-	23/-	27/-	
" " " Behind Lens	22/6	23/6	25/6	29/6	
3 1/2 in. centres, 2/- extra : 3 3/4 in. centres, 4/- extra.					
Adjustable Panel for Behind Lens Pattern, 7/6 extra					
New Patent Disappearing Cord, 3/6 extra.					

Self-Capping Blind fitted to Time & Instantaneous, Snap Shot & Stereo Shutters.
For Prices see page 257.

THORNTON-PICKARD Patent

STUDIO SHUTTER.

WORKS IN FRONT OF THE LENS
OR INSIDE THE CAMERA.....

NO VIBRATION.

THIS Shutter is specially suitable for photographing children, animals, and all other subjects where silence in the working of the Shutter is a desideratum.

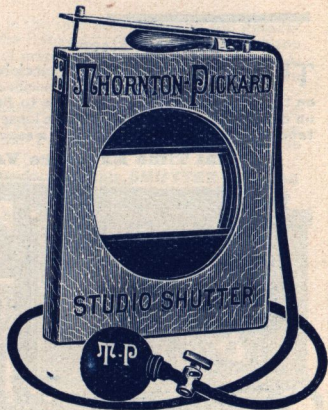
It is made on the Roller Blind principle, and is constructed with two separate blinds which wind upon rollers at opposite ends of the box.

In their normal position the blinds cover the aperture and overlap each other.

On squeezing the Pneumatic Ball to make an exposure, each blind instantly winds on to its roller, causing the Shutter to open from the centre as shown partly accomplished in the illustration. On releasing the ball the blinds immediately close.

In this manner any exposure may be given from $\frac{1}{2}$ of a second to any longer period desired.

* Speed Indicator is not required with Studio Shutter.



PATENT

Extra Rapid Shutter (For Time & Instantaneous).

A SHUTTER having two openings in the double blind, which cause it to open from and close to the centre. Speed 50 per cent. quicker than the Standard Pattern Time and Instantaneous Shutter, viz., about $\frac{1}{130}$ th of a second in the smallest size.

PATENT

Foreground Shutter (For Time & Instantaneous.)

GIVES more exposure to the foreground than to the sky. Specially suitable for cloud effects, landscapes, seascapes, and similar subjects. NOTE.—The Shutter is recommended on the Hood in preference to the Tube. Speed same as Standard Pattern Time and Instantaneous Shutter.

Special Shutter (For Instantaneous only.)

RECOMMENDED when the Focal Plane Shutter cannot be used and when a Shutter working at a higher speed than the ordinary Time and Instantaneous is required. This Shutter is fitted in front of the lens, and in the smallest size works at various speeds from $\frac{1}{30}$ th up to $\frac{1}{180}$ th of a second.

PRICES (including Speed Indicator).

To fit on a Lens Hood or Tube up to ins. dia.	1½	2	2½	3	3½	4	4½	5
Silent Studio Shutter	*	20/6	23/6	27/6	32/6	37/6	42/6	47/6
Extra Rapid Shutter		23/6	25/6	28/6	32/6	37/6
Foreground Shutter ...		23/6	25/6	28/6	32/6	37/6
Special Shutter		23/6	25/6	28/6	32/6	37/6

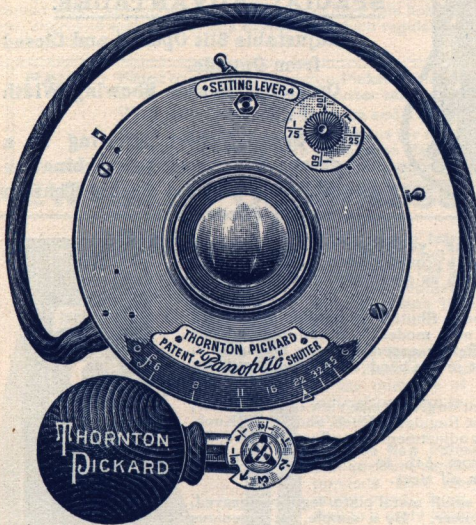


Entry Form and Prospectus for Prize Competition, post free.

**BRITISH-MADE BETWEEN-LENS
SHUTTER.**

The
Thornton-Pickard
New Patent

'PANOPTIC.'



The Latest & Best
Between Lens
Shutter.

Designed on an en-
tirely new principle

Gives exposures
with the same
precision and reli-
ability as the
Thornton-Pickard
Roller-Blind
Shutter.

All working parts
enclosed in an
Aluminium Box.

Works smoothly
without vibration.

Pneumatic & Lever
Releases.

The Shutter is set
without exposing
the plate.

Does not easily get
out of order.

Speeds of 3, 2 & 1 sec. $\frac{1}{2}$, $\frac{1}{3}$, $\frac{1}{4}$, $\frac{1}{5}$, $\frac{1}{6}$, $\frac{1}{8}$, $\frac{1}{10}$ & $\frac{1}{100}$ of a sec.
Time exposures of any duration.

Simple and inexpensive to repair.

This Shutter is the outcome of long continued and costly efforts to produce an English-made Between-Lens Shutter of great accuracy and efficiency.

The "Panoptic" Shutter can be confidently recommended as fulfilling this long felt want. It can be used with all types of Cameras.

It is at present only made in one size, which is suitable for all lenses with apertures up to 15/16ths of an inch. Thus Lenses from $\frac{1}{4}$ -plate to $\frac{1}{2}$ -plate can be fitted with it.

The Shutter can be opened for focussing by means of a Patent Independent Lever. The Price includes Patent Time Exposure Valve.

Thornton-Pickard "Panoptic" Lens, 5 in. focus, full
aperture, f6'5, fitted with above "Panoptic" Shutter

60/-

"Panoptic" Shutter only

35/-

The Thornton-Pickard Manufacturing Co., Ltd., Altrincham.

THORNTON-PICKARD PATENT NEW MODEL FOCAL PLANE SHUTTER.



**ALL ADJUSTMENTS EFFECTED
FROM THE OUTSIDE.**

SPECIAL ADVANTAGES.

Adjustable Slit Opened and Closed from Outside.

Outside Indicator Showing Width of Slit.

New Speed Tablet, showing at a glance the requisite combination of Blind Slit and Spring Tension for any given exposure.

SINCE its introduction some years ago this new pattern of Focal Plane Shutter has proved a distinct success. The new features embodied are such as are appreciated by all Focal Plane workers.

Whilst the original model Shutter is perfect as regards efficiency of exposure, the new model is more convenient to manipulate, the slight difficulty experienced by beginners in altering the width of the slit in the blind having been entirely overcome.

The accompanying illustration gives a side view of the Shutter, and shows Winding Knob, Slit Regulator Knob, and Speed Knob, by means of which the various adjustments are effected externally.

A range of speeds from $\frac{1}{25}$ th to $\frac{1}{1000}$ of a second is obtained with this Shutter in all sizes.

The Speed Tablet is a small metal plate, legibly engraved, affixed to the side of the Shutter. By a simple, yet ingenious arrangement of the Speed Indicator Numbers, Blind Slit Letters, and the Shutter Speeds represented by fractional numbers, the requisite combination of Speed Indicator and Slit Indicator for any given exposure is readily ascertained, without calculation. The Tablet is a more convenient form of the Speed Calculator, which it replaces.

Fitting. No extra charge is made for fitting to current patterns of our own Cameras, but when fitted to obsolete patterns of our manufacture, and to Cameras of other makers, a charge varying from 5/- to 10/- is made according to the size of Shutter, and the amount of work involved.

ORIGINAL MODEL with Detachable Back.

In this pattern the slit is adjusted by links after removing the Back of the Shutter. When the user becomes acquainted with the method of adjustment it is easily accomplished. In efficiency the Shutter is quite equal to the new model. The prices of this original pattern are greatly reduced,

PRICES, including Speed Indicator and Speed Tablet.



NEW MODEL					
$4\frac{1}{2} \times 3\frac{1}{2}$...£2 5 0	$6\frac{1}{2} \times 4\frac{1}{2}$...£2 15 0	$7\frac{1}{2} \times 5$...£3 6 0	$8\frac{1}{2} \times 6\frac{1}{2}$...£3 10 0	12×10 ...£5 5 0	
5×4 ...£2 10 0	7×5 ...£3 6 0	8×5 ...£3 10 0	10×8 ...£4 4 0	15×12 ...£6 6 0	
ORIGINAL MODEL.					
$5\frac{1}{2} \times 3\frac{1}{2}$...£1 5 0	$6\frac{1}{2} \times 4\frac{1}{2}$...£1 15 0	$6\frac{3}{4} \times 4\frac{3}{4}$...£1 15 0	8×5 ...£2 7 6		
5×4 ...£1 10 0	$6\frac{1}{2} \times 4\frac{1}{2}$...£2 0 0	$7\frac{1}{2} \times 5$...£2 2 6	$8\frac{1}{2} \times 6\frac{1}{2}$...£2 10 0	10×8 ...£3 0 0	

THORNTON-PICKARD PATENT

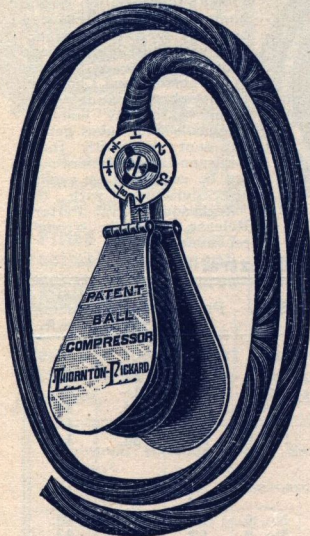
Time Exposure Valve.

THIS is an extremely ingenious, and at the same time simple, invention, by which the Short "Time" Exposures of $\frac{1}{4}$ th, $\frac{1}{2}$, $\frac{1}{3}$, 1, 2 and 3 seconds (which hitherto have had to be obtained by the operator's own judgment) can now be made with any of our various patterns of Time and Instantaneous Shutters.

The Valve itself is fitted to the Pneumatic Release of the Shutter, and works on the principle of compressed air escapement. On the face of the air valve a small hole is pierced which allows the air to escape, and over this hole is screwed a circular revolving disc, engraved with the various exposures, which regulates the escapement. (See engraving page 228.

PRICE : Fitted to any new Thornton-Pickard Time and Inst. Shutter, or to any Time and Inst. Shutter sent to us for that purpose. **5/-**
 With New Ordinary Ball, Tube and Teat, **1/9** extra.
 If the Shutter cannot be sent to us for fitting, we can supply the Valve complete with Arabesque Ball, Tube and Teat ... **6/9**

NEW BALL COMPRESSOR (Patent).



Ball Compressor, with special Ball and Valve complete.

THE newly introduced Ball Compressor is a simple and inexpensive device for ensuring that exactly the same volume of air is expelled from the Pneumatic Ball and forced through the Time Exposure Valve every time an exposure is made.

The Regular and Efficient Working of the Time Exposure Valve is dependent upon this. If the quantity of air expelled from the Ball varies from time to time, the exposures will vary accordingly.

The New Patent Compressor, by governing the pressure applied to the Pneumatic Ball prevents that inequality of exposure which might result from one operator grasping the Ball in a more pronounced manner than another.

The principle of the Compressor will be easily understood from the accompanying illustration, which shows the Time Exposure Valve, fitted with Compressor. Special Ball and Tubing complete.

The working of the Compressor will be found exceedingly simple, and the results obtained most satisfactory and efficient.

The Ball Compressor can be used with advantage on Ordinary Releases without Valve. It prevents that extreme and uneven pressure of the Ball which often results in the bursting of the Teat. Compressor with Special Ball for attaching to Ordinary Releases, 2/6.

PRICE LIST,

Time Exposure Valve, Tube, Teat, and Special Ball with Compressor complete	8/6
Supplying New Compressor and Special Ball to a customer's own Valve and Tubing, 2/6 : fitting, 6d.	3/-
Supplying Compressor with Special Ball, Tubing and Teat to customer's own Valve, 3/6 : fitting, 6d.	4/-

Ball Compressor with Special Ball in place of ordinary Ball, fitted to New Shutters, 2/- extra

THORNTON-PICKARD SHUTTER RELEASES.

Most Durable in
the Trade,
therefore cheapest

"ARABESQUE." Best Quality.

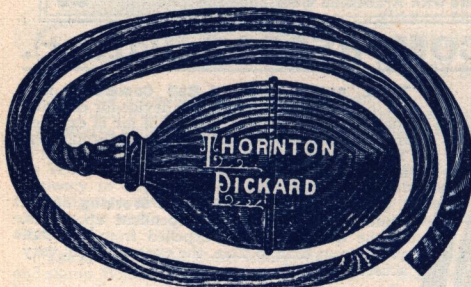
The "Arabesque" Balls and Tubes supplied by us are all specially made for our Shutters from the best pure Para rubber, and are unequalled in quality and durability. We would caution purchasers to see that they obtain only those that are marked with the name **THORNTON-PICKARD** which is moulded on the ball as shown in the illustration.



Standard
Pattern
Releas.

The "Black" and "Red" qualities, as listed below, are recommended as being the best value obtainable at their respective prices.

Between-Lens Shutter Release



Special Pattern Release for Between-Lens Shutters.

THIS Release consists of oval shaped ball, and 1 1/2 ft. of Tubing of the best "Arabesque" quality rubber, joined together by screw connection. It is introduced specially for use in conjunction with the Between-Lens Metal Shutters, as fitted to many small Hand Cameras, for which purpose it will be found extremely suitable. The Balls and Tubes generally sent out with these Between-Lens Shutters cannot be compared in quality and durability with the "Arabesque" Oval Pattern Release, which is strongly recommended.

Price, 1/6. Postage, 1d. extra.

DESCRIPTION AND COMPLETE PRICE LIST.	Size.	PRICE.	Extra Teats each	Extra Tubing per ft.
"Arabesque," best quality, including 2ft. Tubing and Teat. ...	No. 0	1/9	3d.	4d.
"Arabesque," with 2ft. Tubing and Studio Teat... Ball only, for Tubing up to 30ft.	No. 1	3/-	1/-	4d.
" " " " " " " " " 50 ft.	No. 3	2/-	3d.	4d.
" " " " " " " " " 100 ft.	No. 4	4/-	3d.	4d.
" " " " " " " " " " "	No. 6	6/-	3d.	4d.
When ordering these Balls please say "length of Tubing required.				
"Between-Lens Shutter Release" with 18 in. Tubing, oval ball, but no Teat	1/6	...	4d.
"Black" Ball, 2 ft. Tubing and Teat ...	No. 0	1/6	3d.	4d.
"Red" " " " " " " " " " " "	No. 0	1/3	3d.	3d.

Postage Extra.—Postage on One Ball, Tube, and Teat is 1d.

Screw Connections, 3d. per pair (these can be used for joining two lengths of Tubing together).

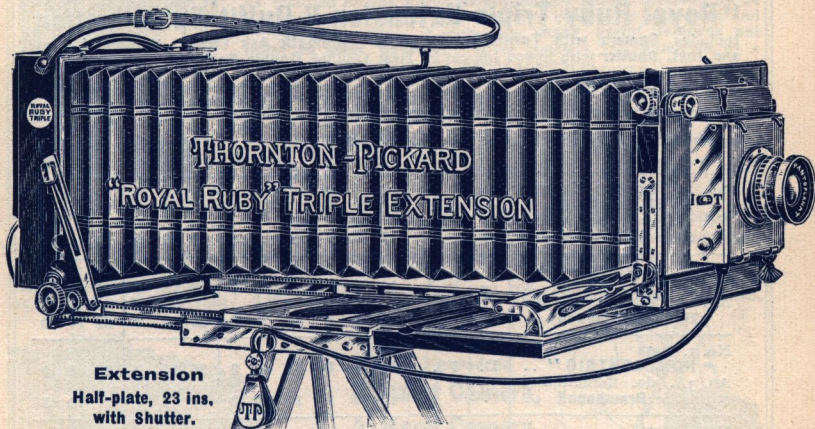
Studio Shutter Tap (to enable the photographer to keep the Shutter open any length of time without holding the ball), 1/- each.

NOTE.—When specially ordered we supply the long Tubing with a Screw Connection, so that it may be attached to the short length already on the Shutter by simply unscrewing the small ball. Thus, either the long or short length can be used at will.

The No. 0 "Arabesque" "Black" and "Red" Balls and Tubes can be supplied without Teats, for Between-Lens Shutters, if required, at 1/6, 1/3, and 1/1. From above table it will be seen that balls of various working capacity, as numbered, can be supplied.

NEW PATTERN CAMERA DE LUXE

THORNTON-PICKARD PATENT

"ROYAL RUBY TRIPLE EXTENSION"**Extension**Half-plate, 23 ins,
with Shutter.

Fitted with Every Practical Movement. Great range of reserve adjustments.

Every movement effected in the simplest manner without complication.

The highest point of Perfection yet attained in Camera Construction.

Capable of executing the most varied and intricate work with the greatest efficiency.

Represents the standard of quality in high class Apparatus.

Superior to any other Camera for Universal Work and easy Manipulation.

Universal Extending and Swinging Front.

Triple Extension Baseboard and Bellows.

Considerable rise to front.

Fall to Front.

Independent Rack and Pinion Rise to front panel at shortest focus.

Independent Rack and Pinion Fall to front at shortest focus.

Rack and Pinion Cross Front Movement.

Short Focus Movement at front of Camera; no protruding baseboard, no cutting off.

Improved pattern Folding Front, locking automatically in position.

Rising Front, brassbound on sides, preventing wear and tear.

Triple Swing to Front, Backward, Forward, and Independent Swing.

Triple Swing to Back, Backward, Forward and Side Swing.

Automatic Spring Stretchers to Front and Back.

A greater range of movements, with greater latitude than any other Camera made.

SEE PRICE LIST NEXT PAGE.

£100 Prize Competition, Prospectus ready in January.

THORNTON-PICKARD

'ROYAL RUBY' TRIPLE EXTENSION OUTFITS.

With various makes of Lenses.

The No. 1 Outfit is fitted with the Thornton-Pickard "PANTOPLANAT" Lens, which is a Symmetrical Rectilinear of first-class quality, and can be confidently recommended.

For the convenience of customers requiring the high-class modern Anastigmats the following list has been compiled, and only Lenses which we can recommend have been included. Any other Lens not specified can be supplied to order.

"Royal Ruby Triple Extension" Outfit Specification

Includes Camera with Turntable, Threefold Automatic Ash Tripod, "Royal" Time and Inst. Shutter with Speed Indicator, Best Quality Double Bookform Dark Slide with hinged metal Division, and Lens.

SIZES AND PRICES OF OUTFITS.

Outfit with LENS.	Ser- ies	L'rg'st ap'tre	Half-plate 6½ × 4½	7½ × 5 13 × 18	Wh'l'-pl'te 8½ × 6½	10 × 8 18 × 24
No. 1. Thornton-Pickard PANTOPLANAT. ..	—	F8	10 10 0	12 10 0	15 0 0	18 10 0
No. 1A. do. Camera and Slide Brassbound ..	—		11 15 0	14 0 0	16 10 0	20 10 0
No. 2. Thornton-Pickard PAN-ASTIGMAT ..	—	F6.8	13 5 0	15 10 0	18 10 0	21 10 0
No. 2A. do. Camera and Slide Brassbound ..	—		14 10 0	17 0 0	20 0 0	23 10 0
No. 3. Ross "HOMOCENTRIC" ..	D.	F8.	14 5 0	17 0 0	20 10 0	25 0 0
Ao. 3A. do. Camera and Slide Brassbound ..			15 10 0	18 10 0	22 0 0	27 0 0
No. 4. Ross "HOMOCENTRIC" ..	C.	F6.	14 15 0	18 0 0	22 0 0	27 0 0
No. 4A. do. Camera and Slide Brassbound ..			16 0 0	19 10 0	23 10 0	29 0 0
No. 5. Ross "HOMOCENTRIC" ..	B.	F5.6	16 5 0	19 10 0	24 10 0	31 10 0
No. 5A. do. Camera and Slide Brassbound ..			17 10 0	21 0 0	26 0 0	33 10 0
No. 6. Ross-Zeiss CONV. ANASTIGMAT ..	VIIa	F6.3	19 0 0	22 15 0	27 15 0	41 10 0
No. 6A. do. Camera and Slide Brassbound ..			20 5 0	24 5 0	29 5 0	43 10 0
No. 7. Cooke "ANASTIGMAT" ..	III	F6.5	14 17 0	17 3 0	23 2 0	29 12 6
No. 7A. do. Camera and Slide Brassbound ..			16 2 0	18 13 0	24 12 0	31 12 6
No. 8. Beck-Steinhell "UNOFOCAL" ..	I.	F6.	14 0 0	15 15 0	21 10 0	
No. 8A. do. Camera and Slide Brassbound ..			15 5 0	17 5 0	23 0 0	
No. 9. Goerz "SYNTOR" No. 9A. do. Camera and Slide Brassbound ..	—	F6.8	13 15 0	17 5 0		
			15 0 0	18 15 0		
No. 10. Goerz "DAGOR" No. 10A. do. Camera and Slide Brassbound ..	III	F6.8	16 10 0	19 15 0	23 0 0	29 15 0
			17 15 0	21 5 0	24 10 0	31 15 0

EXTRAS.

Extra, Bookform Dark Slides each.	0 15 0	0 17 6	1 0 0	1 10 0
Do. do. Brassbound..each	1 0 0	1 2 6	1 5 0	1 15 0

THE "RUBY" CAMERA THORNTON-PICKARD PATENT.



Camera on Stand, and showing the extent of rising front.

THE "Ruby" Camera is a well-known instrument, having been on the market for a great number of years. During this period it has given the greatest satisfaction and pleasure to

USERS IN ALL PARTS OF THE WORLD,

as testified by the many congratulatory letters received by us respecting its merits. Having been constantly improved and brought up-to-date, it possesses many useful features not found in other Cameras. It is strongly recommended as a thoroughly practical and superior apparatus.

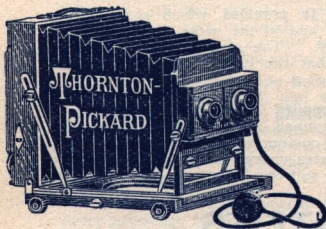
The Shutter, which is attached to and forms part of the Camera, folds up into the Baseboard.

The Front has a large amount of Rise and Fall.

The Camera is fitted with Vertical and Horizontal Swing Movements.

The Camera has a Double Pinion, so that it may be racked from the longest to the shortest focus. Special Short Focus Movement.

The "RUBY" Camera is Three Cameras in One.



"RUBY" CAMERA as arranged for Stereoscopic Work. Shutter with Adjustable Centres.

It can be used as
A Stand Camera,
A Hand Camera,
 or . . .
A Stereoscopic Camera. . . .



Arranged for use as a Hand Camera.

PARTICULARS OF HALF-PLATE SIZE.

Size when folded, including Turntable, Shutter, and all projections 9in. x 8½ x 3½in.
 Longest Focus with Shutter attached 16in.
 Weight about 3½lbs.
 Weight, including Shutter about 3½lbs.

COMPLETE OUTFITS.

"RUBY" Outfit No. 1 (for Hand or Stand.)	Quarter plate. 4¼ x 3½	5x4 and 9x12 c/m	Half-plate. 6½ x 4½	7½ x 5 and 18x18 c/m	Whole plate. 8½ x 6½	10 x 8 and 18x24 c/m
Camera, including Turntable and one Double Plate Holder	5 6 0	5 9 6	6 8 0	7 7 0	8 17 6	10 1 0
Stand, three-fold, to fit Turntable..	17 6	17 6	17 6	17 6	17 6	1 2 6
New Pattern "Royal" Time and Inst. Shutter with Speed Indicator, and Time Exposure Valve	1 5 0	1 5 6	1 6 6	1 6 6	1 10 0	1 13 0
"Ruby" R.R. Lens	2 10 0	2 10 0	3 0 0	3 0 0	4 0 0	6 5 0
Bright Finder	6 6	6 6	8 6	6 6	6 6	6 6
	10 5 0	10 9 6	11 13 6	13 17 6	16 1 6	19 8 0
Waterproof Case (Pattern C)	14 0	15 0	15 0	18 0	1 0 0	1 3 0

Negative Holder for Enlarging, 4/6, 4/9, 5/-, 5/6, 5/6.

The "Amber" Camera

(THORNTON-PICKARD PATENT)

THE "Amber" Camera possesses the same high-class quality of material and workmanship as the "Ruby," description of which is given on the following page.

The "Amber" however, is somewhat different in design, the principal difference being in the construction of the front, which, being narrower than that of the "Ruby," is therefore not suitable for stereoscopic photography.



Includes all necessary movements

Swing Back.

Swinging Front giving both rise and fall.

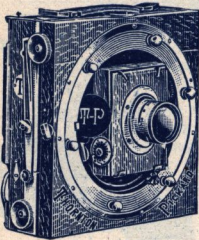
Long and Short Extension.

Folding Front and Double Pinion.

Independent Rise to the Front.

Reversible Back.

Plumb Indicator.



CAMERA WITH TURNTABLE.

When the Camera is used in the hand, we recommend a Bright Finder as listed with the Outfits below. This is fitted on the top of the Camera, and may be used for either horizontal or vertical pictures.

A Shoulder Strap is provided which supports the weight of the Camera, and at the same time leaves the hands more at liberty. The strap is fitted with an adjustable buckle, so that the length may be altered to suit the user.

When a Lens is Supplied with the Camera, an Ivory Focussing Scale is attached to the baseboard without extra charge. When customer's own Lens is fitted to the Camera, a small extra charge is made for engraving the Focussing Scale to suit the Lens.

COMPLETE OUTFITS.

"Amber" Outfit No. 2 (for Hand or Stand).	$4\frac{1}{2} \times 3\frac{1}{2}$	5x4 and 9x12 c/m	$6\frac{1}{2} \times 4\frac{1}{2}$	$7\frac{1}{2} \times 5$ and 13x18 c/m	$8\frac{1}{2} \times 6\frac{1}{2}$
	Camera.....	2 13 6	3 2 6	3 8 6	4 5 0
Double Plate Holder.....	- 8 6	- 9 6	- 10 6	- 12 0	- 15 0
Turntable.....	- 17 6	- 17 6	1 0 0	1 5 0	1 5 0
Stand, Twofold.....	- 13 0	- 13 0	- 13 0	- 13 0	- 13 0
New Pattern "Royal" Time and Inst. Shutter with Speed Indicator and Time Exposure Valve fitted to front of Camera.....	1 5 0	1 5 6	1 6 6	1 6 6	1 10 0
"Amber" R.R. Lens.....	1 7 6	1 7 6	1 12 0	2 15 0	2 15 0
Bright Finder.....	- 6 6	- 6 6	- 6 6	- 6 6	- 6 6
	<u>7 11 6</u>	<u>8 2 0</u>	<u>8 17 0</u>	<u>11 3 0</u>	<u>12 3 0</u>
Waterproof Case, pattern A.....	- 7 6	- 8 6	9 6	- 11 6	- 13 6

Note.—The Between-Lens "Panoptic" Shutter, page 231, can be fitted to any suitable Thornton-Pickard Camera Outfit instead of the Roller-Blind pattern Shutter at a corresponding extra charge.

THE THORNTON-PICKARD NEW "SPECIAL RUBY" COMPLETE OUTFIT.

A High Class Camera Set at a POPULAR PRICE.

Half Plate **£5. 5s.** | Whole Plate **£8. 8s.**

With Thornton-Pickard New "Pantoplanat" Lens
instead of Beck Lens,

Half-Plate, **£5. 10. 0.** Whole-Plate, **£8. 18. 0.**

Suitable for general all round work, including :—

**ARCHITECTURAL, ENGINEERING & TECHNICAL
SUBJECTS : PORTRAITS, COPYING and LAND-
SCAPES.**

A DESIRABLE OUTFIT OF EXCEPTIONAL VALUE.

Adjustable for Hand and Stereo. Work as well as
for use on the Stand.



As a Stand Camera.

NOTABLE FEATURES of the CAMERA.

THE "Special Ruby" is a slightly modified pattern of the well-known Thornton-Pickard Standard "Ruby." All the valuable practical features of the "Ruby" have been retained. Though the price is low, efficiency has been in no way sacrificed to cheapness. Such remarkable value has never previously been offered.

Special Wide Front and Bellows. The front of the Camera is specially wide, and the bellows practically square. Even when the maximum rise of the Front is used for architectural subjects, including lofty buildings, there is no danger of cutting off. The Bellows is of extra quality fine leather of guaranteed strength and durability.

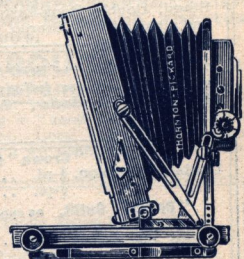
Movements. The "Special Ruby" is replete with every necessary movement. These include considerable Rise and Fall to Front, Swing Front, Triple Swing Back, Double Extension, Short Focus Movement, Self-Locking Stretchers to Camera Front, and Automatic Spring Stretchers to Back.

The materials throughout are of the best, and the Outfit is of first-class finish. For those who desire a Perfect Camera at a Moderate Outlay, the "Special Ruby" is strongly recommended as being absolutely without equal at the price.

N.B.—Supplied in Triple Extension Pattern to special order. Prices on application.

SPECIFICATION.

'Special Ruby' Camera
—Brass Turntable,
3-fold Stand, Time and
Instantaneous Shut-
ter, Double Bookform
Dark Slide, Double
Knuckle-Hinged Fo-
cussing Screen, and
Beck Rapid Symmet-
rical Lens with Iris
Diaphragm, f.8.



Wide Angle Movement.

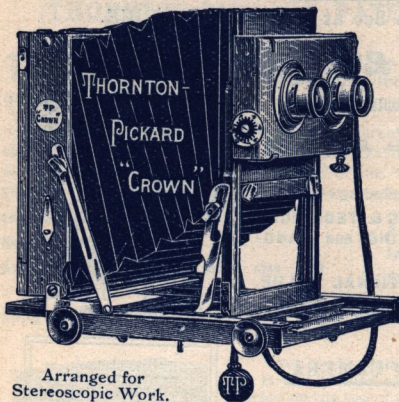
PRICE LIST.

"Special Ruby" Outfit, as per Specification.	Quarter- plate. 4½ × 3¼	5 × 4 and 9 × 12 c/m	Half- plate. 6½ × 4¾	7½ × 5 and 13 × 18 c/m	Whole- plate. 8½ × 6½	10 × 8 and 18 × 24 c/m
		4 4 0	4 10 0	5 5 0	6 0 0	8 8 0
Extra Slides, each ...	0 7 6	0 8 0	0 8 6	0 10 6	0 14 0	1 1 0
Waterproof Case.....	0 6 6	0 7 6	0 8 6	0 9 6	0 10 0	0 14 0

The 10" × 8" and 18 × 24 c/m sizes will be supplied with Plateholder instead of Slides

THORNTON-PICKARD

New "Crown" Outfit.



Arranged for
Stereoscopic Work.

A New High-Class Camera Outfit.

SUITABLE FOR
STEREOSCOPIC AND ORDINARY
PHOTOGRAPHY.

PRICE
FROM **£6. 0. 0.**

Supplied in two sizes—

Half-Plate & Whole Plate

Double and Triple
Extension Models.

Three Cameras in One

A First-Class Stand Camera.

A Perfect Stereoscopic Camera.

A Convenient Hand Camera.

The "Crown" Complete Outfit has been introduced primarily to meet the requirements for a Convertible Camera suitable for ordinary as well as stereoscopic photography at a price suitable for the popular demand.

It is readily converted into an ordinary Camera for single views by first removing division inside Camera, then detaching Shutter Panel carrying Stereo. Lenses and substituting another panel with lens for full size of plate mounted centrally.

SPECIFICATION.—Outfit consists of Camera with Rising and Falling Front, Double Swing Front, Double (or Triple) Rack and Pinion, Triple Swing and Reversing Back, Forward, Backward, and Side Swing; Turntable, Three-fold Stand, Double Book-form Dark Slide, Stereoscopic Shutter, Stereo. Division and a pair of R.R. Stereo. Lenses, with Iris Diaphragm.

N.B.—If desired, the "CROWN" Outfit can be supplied arranged as an ordinary Outfit with Beck Lens for full-size pictures and Standard Pattern Behind Lens Shutter in place of Stereo. Shutter. See Price List.

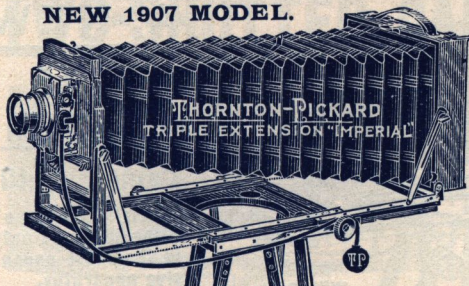
PRICE LIST.

"Crown" Camera Outfit, complete as specification.			
Double Extension, $\frac{1}{2}$ -pl. ..	£6 0 0	Triple Extension, $\frac{1}{2}$ -pl. ..	£7 10 0
" " $\frac{1}{4}$ -pl. ..	9 0 0	" " $\frac{1}{4}$ -pl. ..	11 0 0
"Crown" Outfit, as specification. With Rapid Symmetrical Beck Lens extra for ordinary work.			
Double Extension, $\frac{1}{2}$ -pl. ..	£7 0 0	Triple Extension, $\frac{1}{2}$ -pl. ..	£8 10 0
" " $\frac{1}{4}$ -pl. ..	10 10 0	" " $\frac{1}{4}$ -pl. ..	12 10 0
"Crown" Outfit, without Lenses.			
Double Extension, $\frac{1}{2}$ -pl. ..	£5 0 0	Triple Extension, $\frac{1}{2}$ -pl. ..	£6 10 0
" " $\frac{1}{4}$ -pl. ..	7 15 0	" " $\frac{1}{4}$ -pl. ..	9 15 0
Camera and Turntable only.			
Double Extension, $\frac{1}{2}$ -pl. ..	£3 10 0	Triple Extension, $\frac{1}{2}$ -pl. ..	£5 0 0
" " $\frac{1}{4}$ -pl. ..	5 5 0	" " $\frac{1}{4}$ -pl. ..	7 5 0
"Crown" Outfit, with Standard Pattern Shutter in place of Stereoscopic, and Beck Lens for full-size Pictures, instead of two Stereo. Lenses.			
Double Extension, $\frac{1}{2}$ -pl. ..	£5 17 6	Triple Extension, $\frac{1}{2}$ -pl. ..	£7 7 6
" " $\frac{1}{4}$ -pl. ..	8 15 0	" " $\frac{1}{4}$ -pl. ..	10 15 0

Extra Book-form Dark Slides, $\frac{1}{2}$ -pl., 8/6 each; $\frac{1}{4}$ -pl., 14/- each;
Stiff Waterproof Cloth Case, $\frac{1}{2}$ -pl., 12/6, $\frac{1}{4}$ -pl., 16/-.

THE THORNTON-PICKARD NEW PATENT "IMPERIAL" TRIPLE EXTENSION

NEW 1907 MODEL.



CAMERA OUTFIT.

GREATLY IMPROVED
— PATTERN. —

BETTER VALUE
THAN EVER.

THE STANDARD OF
QUALITY IN LOW-
PRICED OUTFITS.

Complete Half-Plate Outfit,
with 'Pantoplanat' Lens, **75/-**

With Symmetrical Lens, **70/-**

ABSOLUTELY UNEQUALLED.
FOR GENERAL WORK, COPYING,
ENLARGING, AND TELEPHOTOGRAPHY
ALL SIZES $\frac{1}{4}$ to $\frac{1}{8}$ PLATE.

Important Improvements in the 1907 Model

EXTRA WIDE FRONT.

SPECIAL DEEP - MOUTHED BELLOWS, for use with Lenses of extremely short focus.

SPRING SNAPS secure Reversing Back in position.

SPRING STOP to hold Dark Slide in position.

REAL LEATHER BELLOWS of good durable quality.

Independent Rise to Camera Front Panel at shortest Focus.

BEST BRITISH MAKE THROUGHOUT.

OTHER PRACTICAL FEATURES OF THE 'IMPERIAL' EMBRACE:—

Spring Stretchers, fixing back and front **automatically** in "dead true" perpendicular. Considerable Rise to Front; Considerable **Fall** to Front. Long Extension 21", Short Focus 3". Specially Strong Brass-bound Base-board. All Clamping Screws with T shaped heads, etc., etc.

SPECIFICATION.

Camera with all practical movements, including Triple Swing Back; Rising, Falling, and Cross Front; Triple Swing Front; Triple Extension; Short Focus, Reversing Back; Double Rack and Pinion; Brass Turntable; Symmetrical Lens, with Iris Diaphragm f/8; Double Bookform Dark Slide, with hinged division; Three-fold Stand; Thornton-Pickard Time and Instantaneous Shutter, with Speed Indicator.

EXTRA WIDE DEEP-MOUTHED REAL LEATHER BELLOWS.

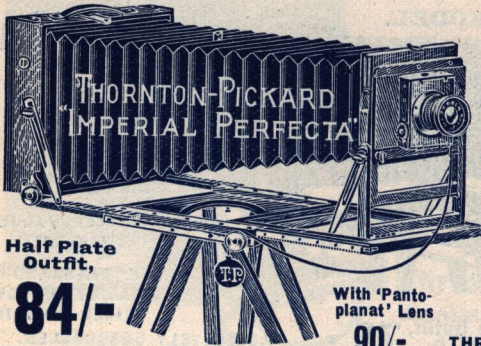
Complete Outfit, as above Specified:—

$\frac{1}{4}$ -plate	65/-	$5\frac{1}{2} \times 3\frac{1}{2}$, Postc'd Size	70/-	13×18 c/m	90/-
$\frac{5}{8} \times 4$ & 9×12 c/m ...	67/6	$\frac{1}{2}$ -plate	70/-	1/1 Plate	110/-

Extra Slides, each $\frac{1}{4}$ -plate, **7/6**; 5×4 and 9×12 c/m, **8/-**; $5\frac{1}{2} \times 3\frac{1}{2}$ and $\frac{1}{4}$ -plate, **8/6**; 13×18 c/m, **10/6**; 1/1-plate, **14/-**
Waterproof Carrying Cases, see page 252.

With 'Pantoplanat' Lens, $\frac{1}{2}$ -pl. **75/-**; $\frac{1}{4}$ -pl. **120/-**

THE THORNTON-PICKARD NEWLY INTRODUCED 'IMPERIAL PERFECTA'



Half Plate
Outfit,

84/-

With 'Panto-
planat' Lens
90/-

A NEW TRIPLE EXTENSION

Camera Outfit
with features
hitherto found only
in the most expensive
apparatus.

Embodying
**THREE IMPORTANT AND
ADVANTAGEOUS IMPROVE-
MENTS.**

Extra Wide Front.

Rack and Pinion for Focusing
body.

Independent Rise when using
short focus lenses.

The only camera at the price
having these advantages

For every class of work includ-
ing **COPYING, ENLARGING**
and **Telephotography.**

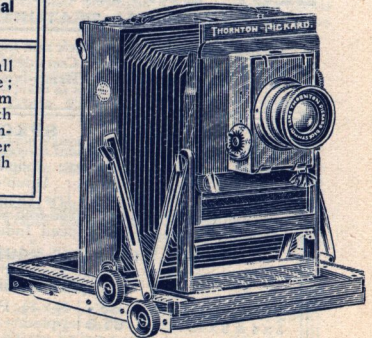
PRACTICAL MOVEMENTS.

Triple Extension, $\frac{1}{2}$ -pl. 22 ins., $\frac{1}{4}$ -pl. 28 ins.
Short Extension. Three Racks and Pinions.
RACKING AND FOCUSING BODY. Rising
and Falling Front. Cross Front. **INDEPEN-
DENT RISING FRONT,** when using Short
Focus Lenses. Triple Swing Front. Backward
Upward and Downward Swing. Swing Back.
Forward and Backward Swing. Reversing
Back. Time and Instantaneous Exposures.
Lens convertible for Long Focus Views. **REAL
LEATHER BELLOWS.** Every Practical
Requirement provided for.

SPECIFICATION, Camera with all
movements as above; Brass Turntable;
Beck Symmetrical Lens with Iris Diaphragm
 $f/8$; Double Book-Form Dark Slide, with
hinged division; Three-fold Stand; Thornton-
Pickard Time and Instantaneous Shutter
with Speed Indicator. Camera fitted with
Real Leather Belows.

PRICES.

Half-Plate ($6\frac{1}{2} \times 4\frac{3}{4}$ ins.) .. **84/-**
 $7\frac{1}{2} \times 5$ ins., & 13×18 c/m. **105/-**
Full-Plate ($8\frac{1}{2} \times 6\frac{1}{2}$ ins.).. **126/-**



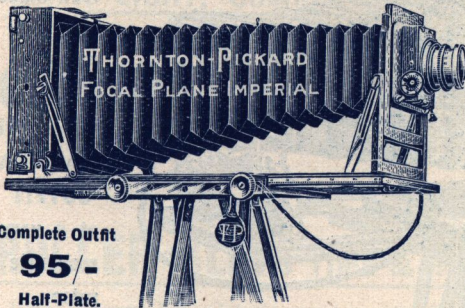
Racking Body for Focusing and
Independent Rise to Front at Short Focus.

Complete Outfit as above but with Thornton-Pickard "**PANTOPLANAT**" Lens.

$\frac{1}{2}$ -Plate... .. **90/-** | 13×18 c/m. ... **110/-** | $\frac{1}{4}$ -Plate **136/-**

Extra Slides, Carrying Cases, &c., same as for **70/-** "IMPERIAL." Page 241.

THORNTON-PICKARD NEW
 "IMPERIAL TRIPLE EXTENSION" (HALF-PLATE)
 — SIZE. —
TWO-SHUTTER CAMERA.



Complete Outfit
95/-
 Half-Plate.

A SPLENDID
**LOW-PRICED
 COMBINATION
 CAMERA,**

OF REMARKABLE VALUE
 FOR PHOTOGRAPHING . .
**ATHLETES, GYMNASTS,
 CYCLE-RACING,
 HORSE-JUMPING,**
 And all quickly moving
 objects requiring extremely
 short exposures up to $\frac{1}{500}$ sec

Equally suitable for Ordinary Work, as well
 as for Copying, Enlarging, and Telephotography.

FOCAL PLANE SHUTTER BUILT IN THE CAMERA BODY

giving Instantaneous Exposures from $\frac{1}{100}$ th to $\frac{1}{500}$ th of a second.

BEHIND LENS TIME AND INSTANTANEOUS SHUTTER

Fitted to Camera Front, and giving Instantaneous Exposures from
 $\frac{1}{15}$ th to $\frac{1}{90}$ th of a second. Time Exposures of any duration.

This Camera, which is sold as a Complete Outfit, is exactly similar to the
 "Imperial Triple Extension" Outfit as described on page 241, but with the
 addition of a Special pattern Focal Plane Shutter built in the
 Camera body.

The Focal Plane Shutter has a fixed slit. It is fitted with Finger Release, and
 the Pneumatic Release fitted to the Time and Instantaneous Shutter at the front can be
 readily disconnected and used for operating the Focal Plane.

With the combination of Focal Plane Shutter, and Time and Instantaneous
 Shutter in one Outfit, Speeds from prolonged "Time" to $\frac{1}{500}$ of a second
 are obtainable. The possessor is thus equipped with a suitable range for every class
 of subject.

SPECIFICATION AND PRICES.

SPECIFICATION. Exactly as on page 241 but with the
 addition of Focal Plane Shutter built in the
 Camera body, Half-Plate size, with Beck Lens

£4 15. 0.

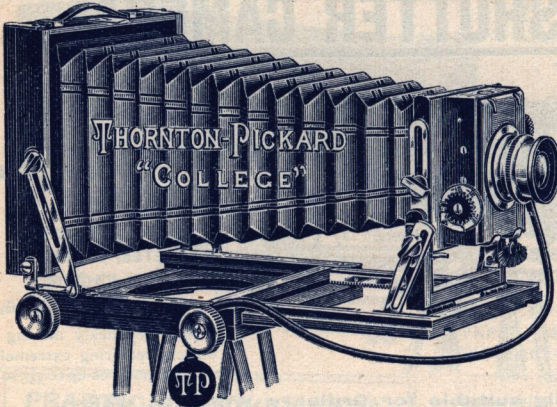
Do. do. with New PANTOPLANAT LENS

£5 0. 0.

N.B.—This Two-Shutter Camera can be supplied without Lens at the price of **£4 10. 0.**
 or any maker's Lens desired can be supplied by us at Manufacturer's price, an
 allowance of **10/-** being made for the Beck Lens.

A New Low-Priced Camera of Remarkable Value.

The THORNTON-PICKARD "COLLEGE" SET.



— A —
Well-Made
Finely
Finished
and
Serviceable
CAMERA
OUTFIT
at a very
moderate
price.

In view of the number of requests we have received during the last few years, we are convinced that there is a real demand for a good Camera Set at an even cheaper price than the 70/- Outfit. For those who wish to purchase a really good Camera Outfit, but are unable or do not wish to expend much money, the "College" Set will be found to be a great boon, and we anticipate for it an extraordinary demand.

SPECIFICATION.

Camera.—Made of beautifully polished Mahogany with best Machine-finished Brass Fittings; Extremely Long Extension, with Extending and Swinging Front; Double Stretchers to Camera Back and Front; Brass-lined Fork; Rising and Falling Front; Triple Swinging Front; Double Swing Back; Double Knuckle-hinged Focussing Screen; Reversing Back; Double Rack and Pinion, racking from longest to shortest focus.

Shutter.—Thornton-Pickard Time and Instantaneous Roller Blind Shutter, giving Instantaneous Exposures from 1/15th to 1/90 of a second, and Time Exposures of any duration. Fitted with Speed Indicator and Pneumatic Release.

Slide.—Double Book-form Dark Slide, with double Rabetted hinged Shutters made of Mahogany and French Polished.

Tripod. Two-fold Stand to fit Turntable with adjustable bottom leg.

Turntable.—Machine-made Brass Turntable, fitted in Camera Base-board.

Lens.—Thornton-Pickard "Rectograph," a first class Double Symmetrical Rectilinear Lens with Iris Diaphragm.

PRICE LIST.	1/4-Plate.	1/2-Plate.	Whole Plate.
Thornton-Pickard "College" Complete Set	37/6	52/6	85/-
Extra Double Book-form Dark Slides ..	5/6	7/-	12/-
Good Quality Waterproof Cloth Case ..	2/6	3/6	5/6
Camera, with Turntable and Slide ..	26/-	35/-	50/-
Two-fold Ash Tripod to fit Turntable ..	4/6	4/6	—

With "Pantoplanat" Lens. 1/4-pl. 57/6: 1/2-pl. 95/-

The THORNTON-PICKARD NEW **GUINEA CAMERA OUTFIT,**

21/- The **"TRIBUNE."**

A LIGHT, COMPACT, EFFICIENT AND
HIGHLY PRACTICAL

QUARTER-PLATE CAMERA OUTFIT

At an Extremely Low Cost.

Fitted with the well-known and Reliable Standard Pattern

THORNTON-PICKARD

ROLLER-BLIND TIME & INST. SHUTTER

Giving Exposures $\frac{1}{60}$ th to $\frac{1}{90}$ th of a second, as well as Time Exposures of any duration.

The Best Value it is possible to obtain at the price is given in the Thornton-Pickard New Guinea Outfit, the "TRIBUNE."

In at least one respect it is an advance on all previous Outfits of this description—it is fitted with a Thornton-Pickard Behind Lens Time and Instantaneous Shutter with Speed Indicator, which is included in the price of 21/-.

SPECIFICATION OF THE "TRIBUNE" OUTFIT.

Camera.— $\frac{1}{4}$ -plate size ($4\frac{1}{4}$ " x $3\frac{1}{2}$ ""). Made of selected Mahogany, French Polished. Double Extension. Double Racks and Pinions focussing from $3\frac{1}{2}$ " to 11". Double Stretchers to Back and Front. Reversing Back. Double Swing Back. Rising and Falling Front.

Turntable.—Polished Brass Turntable fitted in Camera Base.

Stand.—Two-fold Ash Stand to fit Turntable.

Slide.—Double bookform Mahogany Slide, French Polished to match Camera, with Rabetted Shutters, and Division.

Shutter.—Thornton-Pickard Behind Lens Time and Instantaneous with Speed Indicator, and Loose Panel, giving Time Exposures of any duration, and Instantaneous Exposures from $\frac{1}{15}$ th to $\frac{1}{90}$ th sec. Fitted with Pneumatic Release.

Lens.—Achromatic Lens in polished brass mount, with Iris Diaphragm.

QUARTER-PLATE OUTFIT, as above specification **21/-**

Do. do. with R.R. Doublet Lens **30/-**

Extra Slides, each - - - - - **5/6**
Waterproof Carrying Case - - - - - **2/6**

£100 PRIZE COMPETITION. Prospectus ready January.

THE THORNTON-PICKARD

NEW
PATENT“**FOLDING RUBY**”A HIGH-CLASS
HAND . . .
CAMERA**DE LUXE,**

Of the Latest Design.

Finest Manufacture and
Finish throughout. . .

MADE IN

 $\frac{1}{4}$ Plate and**5 x 4**

SIZES.

**Fitted with Every Possible Practical Movement.
Great Range of Reserve Adjustments.
Every Movement possesses the greatest latitude,**

—AND THE SAME COMPRISE—

Extreme Rise, Extreme Fall.
Independent Rise and Fall to Front
Panel, with Rack and Pinion
Movement.
Spring Stretchers to Back and
Front.
Spring Infinity Catch.
Universal Rising, Falling, and
Swinging Front.
Extreme Movements in every
Direction.
Automatic Spring Catches to Swing
Front.
Long Extension, 15"
Short Focus, 2 $\frac{1}{2}$ "

Great Rise at Shortest Focus.
Falling Baseboard, for use with
Short Focus Lenses.
Hinged Body Top (for use with Rising
Front at shortest focus), with
Spring Snaps.
Special Focussing Rack & Pinion
for shortest focus lenses.
Reversing Back for Vertical and
Horizontal Views.
Spring Snap automatically secur-
ing Slides in position.
Baseboard and Extension Frame
considerably strengthened by
means of Brass Runner Plates.

SPECIFICATION.

Camera with movements as above, best Selected Mahogany, beautifully polished internally, with handsome machine-made highly-finished Brass Fittings, covered externally with Real Seal-Grained Morocco Leather, Patent "Panoptic" Shutter with Patent Time Exposure Valve—exposures 1-100th sec. to 3 seconds, and Time Exposures. 3 Bookform Slides; Best Brilliant Finder, and T Spirit Level.

Quarter-Plate Size . . £6. 10s. | 5" x 4" . . £7. 10s.

THE THORNTON-PICKARD NEW PATENT

'NIMROD AUTOMAN' SERIES OF



NEW AND IMPROVED FOLDING HAND CAMERAS

OF UNIQUE DESIGN.
EVER READY FOR ACTION.

MADE IN

Quarter-Plate Size only,

And in

FOUR DIFFERENT
MODELS.

COMPACT, CONVENIENT & PORTABLE HAND CAMERAS

Of an Ever-ready type, suitable for the use of:—

HUNTERS
SPORTSMEN

CYCLISTS
MOTORISTS

GOLFERS
YACHTSMEN

TRAVELLERS
TOURISTS

And for all requiring a Practical Hand Camera light in weight, of small size, and convenient in use.

The Thornton-Pickard "Nimrod Automan" Hand Cameras are a new series of Folding Hand Cameras, which it is anticipated will prove to be the most strikingly original and useful novelty in Hand Cameras introduced during the season of 1907. When the "Automan" Hand Cameras were designed a few years ago, they were at once recognised as possessing most useful features not to be found in any other Hand Camera, but unfortunately they were too expensive to become popular.

In the "Nimrod Automan" series all the advantages of the original "Automan" Cameras have been retained, notably the **Self-Erecting Front**.

The **Self-Erecting Mechanism** has been simplified, and important improvements have been introduced, yet notwithstanding this the prices have been so reduced as to bring the cameras within the reach of all. For the general and popular trade the "Nimrod Automan" should become

THE SUCCESS OF THE SEASON.

The introduction of the "Nimrod Automan" is the first attempt to give photographers a Folding Hand Camera fitted with a perfect Self-Erecting Front at a popular price. The great convenience of the Self-Erecting Front will be readily recognised by all Hand Camera Workers. To bring the Camera into action all that is required is to depress the Spring Catch at the top of Camera Body, when the Baseboard will not only fall into position, but the front will also be brought automatically out of the Camera body and erect itself at the "infinity" focus ready for action.

**ONE OPERATION ONLY IS NEEDED TO MAKE
THE CAMERA READY FOR WORK.**

and that the mere pressure on a Spring Catch,

THE THORNTON-PICKARD NEW PATENT

'NIMROD AUTOMAN' SERIES

—OF—

FOLDING PATTERN

HAND CAMERAS

ARE

SELF-ERECTING

and open out

READY FOR WORK WITH ONE TOUCH



'NIMROD
AUTOMAN'
No. 2 Model.

on the Spring Snap
which secures the
Camera when closed.

SPECIFICATION AND PRICES.

"NIMROD AUTOMAN" No. 1 as above illustrated. $\frac{1}{4}$ -Plate ($4\frac{1}{2}$ in. \times $3\frac{1}{2}$ in.)

Camera. Made of Mahogany, beautifully polished inside and covered with best quality Waterproof Morocco Grained Leatherette, and the Brass Fittings are best quality machine-made and finished. Fitted with Self Erecting Front, Rack and Pinion Focussing, Rising and Falling Front, Reversing Back for Vertical and Horizontal Pictures, with Combined Ground Glass Focussing Screen and Spring Focussing Hood, Automatic Spring Snaps to hold Reversing Back and Dark Slide in position. Engraved Focussing Scale on Camera Base with Pointer. Bush fitted in Camera Body for use on Stand. Brilliant View Finder with Sky Shade, fitted in Camera Body.

Best Quality Real Leather Bellows.

Patent Self Erecting Front. As the Camera Front erects itself automatically at the "infinity" focus, no Infinity Catch is required.

Shutter. "Iris" Auto. Between-Lens Time and Instantaneous Shutter, giving variable Instantaneous Speeds, Bulb Exposure, and Time Exposures of any duration. Fitted with Finger and Pneumatic Releases.

Plate Holder. Double Plate Holder of new design with Spring Light Trap and Aluminium Shutters.

Lens. Thornton-Pickard "Automan" Lens. A first-class "Double Symmetrical Rectilinear Lens, having good covering power and definition, with "Iris" Diaphragm, largest aperture F/8,

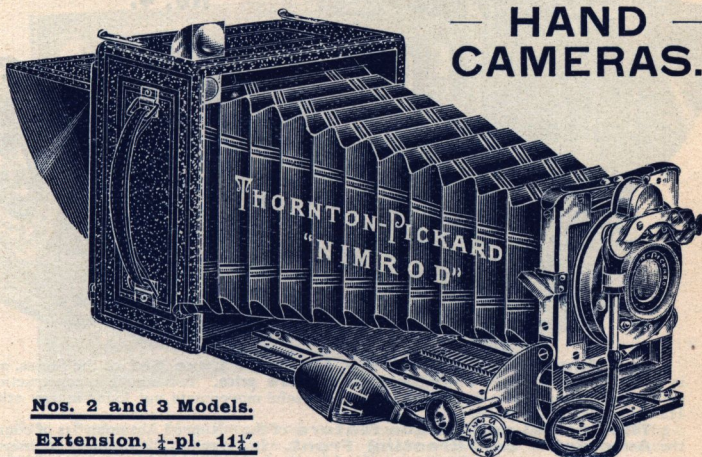
Thornton-Pickard "Nimrod Automan," No. 1, as above Specification.	$\frac{1}{4}$ -Plate Size. £2. 2s. Od.
Extra Double Plate Holders, each	4/-

Waterproof Canvas Case to carry Camera with three Plate holders ... **2/6.**
Black Leather Case to carry Camera and six Plate holders **5/-.**

The Thornton-Pickard NEW PATENT

“NIMROD AUTOMAN”

FOLDING

— HAND —
CAMERAS.**Nos. 2 and 3 Models.****Extension, $\frac{1}{4}$ -pl. $11\frac{1}{4}$ ".****“NIMROD AUTOMAN” No. 2.**

The “Nimrod Automan” No. 2. has the same general specification as No. 1, but with the further advantage of **Double Extension** operated with Two Racks and Pinions. This Extension permits the use of the single component of the Lens and Lenses of long focus generally, as well as for copying full size, etc. The focussing is effected with mechanical precision and the greatest ease. The above illustration shows the Camera at longest extension, which in the $\frac{1}{4}$ plate size is $11\frac{1}{4}$ inches.

SPECIFICATION.

Double Extension, Self-Erecting Front, Camera with Double Racks and Pinions, and all other points as No. 1.

Quarter-Plate Size ($4\frac{1}{4}'' \times 3\frac{1}{4}''$) £2. 15. 0.

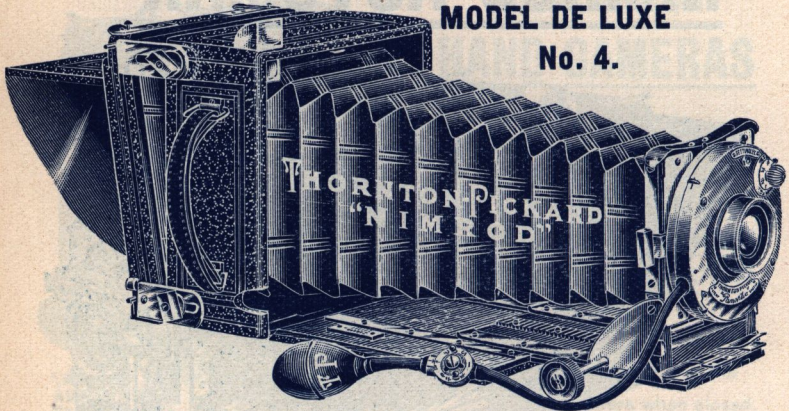
SPECIFICATION “NIMROD AUTOMAN” No. 3.

Double Extension, Self-Erecting Front. Camera as No. 2, and with same general features, but the same is of superior finish, and covered with Real Seal-Grained Morocco Leather.

Quarter-Plate Size ($4\frac{1}{4}'' \times 3\frac{1}{4}''$) £3 3. 0.

Extra Plateholders and Carrying Cases as on Previous Page.

THE THORNTON-PICKARD NEW PATENT

'NIMROD AUTOMAN'MODEL DE LUXE
No. 4.

The "Nimrod Automan" No. 4 is the **De Luxe Set** of the Series, and is a really superb Outfit sold at a **remarkably low price**. It is simple in construction, convenient to use, and is fitted with important useful movements not found in any other Hand Camera at the price.

The special and unique feature of the "Nimrod Automan" is of course the **Automatic Self-Erecting Front**. In previous "Automan" Cameras, many useful movements had to be sacrificed for the sake of fitting this particular feature, but in the "Nimrod" Series, and especially the No. 4 pattern, we are able to fit this unique Self-Erecting Front and also all the necessary movements the general photographer requires. The No. 4 "Nimrod" has all the movements of the No. 3 pattern, with the following additions:—

Universal Swing Back,
Extra Back Extension giving longer focus,
Extra Short Extension allowing the use of
shorter focus lenses,
T Spirit Level.

SPECIFICATION.

Camera.—Made of Mahogany, beautifully French polished inside, covered with Real Seal-grained Morocco Leather, and the Brass Fittings are best quality machine-made and finished. Fitted with Self-Erecting Front, Double Extension, with Double Rack and Pinion Focussing from shortest to longest extension; Universal Swing Back; Extra Back Extension; Short Extension; Rising and Falling Front; Reversing Back for Vertical and Horizontal Pictures, fitted with Combined Ground Glass Focussing Screen and Spring Focussing Hood. Automatic Spring Snaps to hold Reversing Back and Dark Slide in position. Engraved Focussing Scale on Camera Base with Pointer. Bush fitted in Camera Body for Stand use. **T Spirit Level. Best Quality Real Leather Bellows.**

Patent Self-Erecting Front.—As the Camera Front erects itself automatically at the "Infinity" focus, no Infinity Catch is required.

Shutter.—Thornton-Pickard Patent "Panoptic" Shutter with Time Exposure Valve giving **Short Time Exposures** from $\frac{1}{8}$ to 3 seconds. **Prolonged Time Exposures** of any duration, and **Instantaneous Exposures** from 1-15th to 1-100th second. Fitted with Finger and Pneumatic Releases.

Quarter-Plate Size $4\frac{1}{4}$ " \times $3\frac{1}{4}$ " £4 4s. Od.

Extra Plateholders and Carrying Case as on page 248.

THE THORNTON-PICKARD . . .

'FOCUSSING ROTATOR'



A New Perfected Magazine Hand Camera to carry 12 quarter-plates in sheaths. Fitted with Thornton-Pickard New **Self-Capping Roller-Blind Shutter**. Achromatic Lens of fine quality and good definition. Two Brilliant Finders.

Hinged Front Door, facilitating cleaning of Lens and Finders, beautifully French polished internally.

Rack and Pinion Focussing, with Engraved Focussing Scale, Auxiliary Back Door for removing exposed plates, leaving other plates in position.

MADE IN QUARTER-PLATE SIZE ONLY.

SPECIFICATION AND PRICES.

Camera, handsomely covered in Black Seal-Grained Leatherette with Silver-plated Fittings. Hinged Door to front, beautifully French polished internally. Improved Changing Arrangement with Automatic Numerator.

New Model Roller-Blind Shutter with Speed Indicator, giving Instantaneous Exposures from $\frac{1}{25}$ th to $\frac{1}{500}$ th sec. as well as **Time Exposures**, and with all working parts inside Camera. Fitted with Patent Safety Cap.

Good Quality Single Achromatic Lens, with Iris Diaphragm. Two Brilliant Finders. Tripod bushes fitted.

Quarter-plate Size (4 $\frac{1}{4}$ " x 3 $\frac{1}{4}$ "), 30/-

Prices of "ROTATOR" Camera fitted with other makes of Lenses.

	£	s.	d.
"Rotator" Camera, as specified, but with Beck Rapid Symmetrical Lens, F/8, 6" focus, instead of Single Achromatic Lens	2	10	0
Do. do. with Busch Detective Aplanat, F/6.5, 6 $\frac{1}{2}$ " focus	3	5	0
Do. do. with Cooke Syntor, F6.5	6	10	0
Do. do. with Goerz Syntor Anastigmat, F/6.8, 6" focus	5	5	0

Pneumatic Release 2/6 extra, or with Time Exposure Valve fitted 7/6 extra.

£100 PRIZE COMPETITION.

Prospectus ready in January.

Carrying Cases BEST QUALITY.

For Thornton-Pickard and other makes of Cameras.



PATTERN A.



PATTERN D.



PATTERN C.

Patterns A and B are Waterproof Cloth Cases, Leather Bound, with **Collapsible** sides and Loose division, lined with Green Baize, and fitted with Snap Lock and Key, and Shoulder Strap.

A To hold Camera, three Slides, Shutter, Lens, Focussing Cloth, etc.

B To hold three extra Slides only.

Pattern H is a strong Waterproof Cloth Case, Leather Bound, to hold Tripod Stand.

Patterns C & D are Strong Waterproof Cloth Cases, Leather Bound,

with **Stiff Sides** and Fast Division Lined with Green Baize, and fitted with Snap Lock and Key, Handle and Shoulder Strap, which may also be used Knapsack fashion.

C To hold Cameras, three Slides, Shutter, Lens, Focussing Cloth, etc.

D To hold Camera, six Slides, Shutter, and accessories; or Camera with Lens attached *in situ*, five Slides, Shutter, and accessories; or Stereoscopic Camera, five Slides, Shutter, and accessories.

LEATHER CASES F and G are manufactured from the Best Brown Solid Sole Leather, very strongly built on internal steel framing, and are of the best portmanteau finish in all respects. Lined with good quality Velvet; fitted with fixed Velvet-covered Division, and loose Velvet Pads. Best strong Brass Lever Lock and Key, Sling Shoulder Strap, Handle on top, and two smaller straps with buckles, fitting completely round Case and securing in front. The prices of these Cases are fixed as low as possible, consistent with the high-class quality of the goods supplied.

PATTERN F HOLDS SAME AS PATTERN C CASE.

PATTERN G HOLDS SAME AS PATTERN D CASE.

SIZE.	4½ × 3½			5 × 4			6½ × 4½			7½ × 5			8½ × 6½			10 × 8			12 × 10		
Style of Case as described above.	£	s.	d.	£	s.	d.	£	s.	d.	£	s.	d.	£	s.	d.	£	s.	d.	£	s.	d.
Pattern A, Waterproof Cloth	0	7	6	0	8	6	0	9	6	0	11	6	0	13	6	0	16	0
Pattern B " "	0	5	6	0	6	6	0	7	6	0	8	6	0	9	6	0	12	0	1	8	0
Pattern C " "	0	14	0	0	15	0	0	16	0	0	18	0	1	0	0	1	3	0	1	8	0
Pattern D " "	0	17	6	0	19	0	1	0	0	1	2	0	1	4	0	1	8	0	1	15	0
Pattern F, Solid Leather ...	1	5	0	1	10	0	1	15	0	2	0	0	2	5	0	3	10	0	4	10	0
Pattern G " "	2	0	0	2	5	0	2	15	0	2	17	6	3	10	0	4	15	0	6	0	0
Pattern H Stand Case.....	0	5	0	0	5	0	0	5	0	0	5	0	0	5	0	0	6	0
Leather Lens Case	0	3	6	0	3	6	0	4	0	0	4	0	0	4	0	0	5	6	0	7	6

Waterproof Cases, SECOND QUALITY

For "IMPERIAL," "SPECIAL RUBY," and other Cameras.



PATTERN J.

Description of Pattern J.

COLLAPSIBLE, Waterproof Tweed Cloth, lined with Green Baize. Leather Fittings, and Handle and Shoulder Strap.

Description of Pattern K.

STIFF, Waterproof Tweed Cloth Case, Leather Bound, lined Green Baize, Leather Handle and Shoulder Strap, Nickel Lock and Key.

Description of Pattern N.

STIFF, Waterproof Tweed Cloth superior quality, Leather bound, fitted with Leather Handle and Shoulder Strap, Nickel Lock and Key.

PATTERNS J and K are made to accommodate Camera, Shutter, three Plate-Holders, Lens, and Focussing Cloth.

PATTERN N takes also Focal Plane Shutter.

Stand Case, PATTERN M. Waterproof



PATTERN N.

Tweed Cloth, with Tan Leather Fittings and Bindings.

Special Leather Case, Pattern O.

A good, strong, and serviceable Leather Case at a lower price than our standard pattern Leather Cases. Made of best quality leather, and well finished, lined with Velvet, and fitted with Strong Nickelled Lever Lock and Key.

This is a thoroughly reliable and substantial article, and a Case which we have every confidence in recommending to those who require a good Leather Case at a moderate price. It is made to hold Camera, Shutter 3 Plate-Holders, Lens, and Focussing Cloth, and is specially suitable for the "Imperial Triple Extension" Outfit.

Half-Plate Size 25/-.

Whole Plate 30/-.

Size.	$4\frac{1}{2} \times 3\frac{1}{2}$	$5 \times 4 \&$ $9 \times 12 \text{ c/m}$	$6\frac{1}{2} \times 4\frac{3}{4}$	$7\frac{1}{2} \times 5 \&$ $13 \times 18 \text{ c/m}$	$8\frac{1}{2} \times 6\frac{1}{2}$
Style of Case as described above.					
Pattern J	4/6	5/-	5/6	6/6	7/-
Pattern K	7/-	7/6	9/-	10/6	11/6
Pattern N	12/-	12/6	13/6	14/6	20/-
Pattern M (stand case)	4/6	4/6	4/6	4/6	4/6
Pattern O (Leather Case) ..			1 5 0		1 10 0

CYCLE CAMERA CARRIER.



This attachment is the best and most convenient method yet devised of carrying a camera on a cycle. It is light and easily fitted.

— Price 8/6 each. —

Camera Cases can be fitted with special straps so that they can be readily attached to Carrier when in position at a charge of 2/6 extra per case.

Telegraphic Address: "PICKARD," ALTRINCHAM.

Size of Plate in inches	Quarter-Plate $4\frac{1}{2} \times 3\frac{1}{2}$			5x4 and 9x12 c/m.			Half-Plate $6\frac{1}{2} \times 4\frac{1}{2}$			$7\frac{1}{2} \times 5$ and 13x18 c/m.			Whole-Plate $8\frac{1}{2} \times 6\frac{1}{2}$			10x8			12×10 and 24x30 c/m.		
	£	s.	d.	£	s.	d.	£	s.	d.	£	s.	d.	£	s.	d.	£	s.	d.	£	s.	d.
Stereoscopic Shutter Behind Lens, for Stereo lenses	—	—	—	—	—	—	1	3	6	1	3	6	1	5	6	—	—	—	—	—	—
Adjustable Centres to Stereo Shutter, extra	—	—	—	—	—	—	7	6	—	7	6	—	7	6	—	—	—	—	—	—	—
Stereoscopic Division, detachable	—	—	—	—	—	—	5	0	—	5	0	—	5	0	—	—	—	—	—	—	—
Negative Holder for Enlarging	4	6	—	4	9	—	5	0	—	5	6	—	5	6	—	—	—	—	—	—	—
Brassbinding "Amber" and "Ruby" Cameras	15	0	—	16	6	—	18	0	—	18	0	—	1	0	0	1	3	0	1	9	0
Brassbinding Double Plate Holder or Slide "Amber" and "Ruby" patterns	3	6	—	3	6	—	4	0	—	4	0	—	5	0	—	5	6	—	7	0	—
Extra Panels for "Amber" Camera front	1	6	—	1	6	—	1	6	—	1	6	—	2	0	—	2	6	—	2	6	—
Do. Do. for "Imperial" Camera Front	1	6	—	1	6	—	1	6	—	1	6	—	2	0	—	2	6	—	2	6	—
Extra Panels for "Ruby" Camera front	2	0	—	2	0	—	2	6	—	2	9	—	2	9	—	3	0	—	3	6	—
Do. for "Royal Ruby" Camera front or "Royal Ruby Triple Extension" front	2	3	—	2	3	—	2	9	—	3	0	—	3	0	—	3	6	—	4	0	—
Plate Carriers for smaller sizes of Plates outside measure	—	—	—	—	—	—	1	0	—	1	2	—	1	3	—	1	8	—	2	0	—
(Two required for each Plate-Holder or Dark Slide).	—	—	—	—	—	—	1	4	—	—	—	—	—	—	—	—	—	—	—	—	—
Do. for Postcard size, to fit $\frac{1}{2}$ -plate slides, each	—	6	—	—	6	—	9	—	—	10	—	—	1	0	—	—	—	—	—	—	—
Film Carriers for Cut Films } each	2	6	—	2	9	—	4	0	—	4	6	—	5	6	—	—	—	—	—	—	—
(Two required for each Plate Holder or Dark Slide) } six.	4	6	—	4	6	—	4	6	—	4	6	—	4	6	—	4	6	—	4	6	—
Special Waterproof Focussing Cloth	4	6	—	4	6	—	4	6	—	4	6	—	4	6	—	4	6	—	4	6	—
Complete Dark Room & Chemical Outfit for beginners	15	0	—	1	0	0	1	5	0	1	10	0	2	0	0	—	—	—	—	—	—
Strong Dovetailed Box, with Lock and Key, to contain everything for travelling or storing purposes	17	6	—	19	0	—	1	0	0	1	3	0	1	3	0	1	8	0	1	15	0
Luggage Carriers, for Bicycle, each	8	6	—	8	6	—	8	6	—	8	6	—	8	6	—	8	6	—	8	6	—
Waterproof Cloth Cases (see pages 252 & 253).	—	—	—	—	—	—	—	—	—	—	—	—	—	—	—	—	—	—	—	—	—

N.B.—"Imperial" and "College" Bookform Slides can be fitted with Patent Exposure Recorders at a charge of 1/- per slide extra. These are strongly recommended on account of their great practical convenience. With our Patent Plateholders & Best Bookform Slides, Recorders are included without extra charge

SPECIAL POSTCARD SIZE CAMERA ($5\frac{1}{2}$ in. x $3\frac{1}{2}$ in.) "Imperial Triple Extension" Pattern, see page 241.

Price List of the Thornton-Pickard Shutters

SIZE, to fit on a Lens Hood or Tube up to inches diameter..	1½	1½	2	2½	3	3½	4	4½	5
TIME AND INSTANTANEOUS									
NEW PATTERN "ROYAL," with Inside Fittings.	19/-	19/6	20/-	23/6	26/6
BEHIND LENS, Do. Do. Do.	20/-	20/6	21/6	25/-	28/-
ORIGINAL PATTERN "ROYAL" with Inside Fittings.	17/-	17/6	18/-	21/-	24/-
BEHIND LENS, Do. Do. Do.	18/-	18/6	19/6	22/6	25/6
STANDARD PATTERN	14/6	15/-	16/-	18/-	21/-	25/-	30/-	35/-	38/-
BEHIND LENS	15/6	16/-	17/6	19/6	22/6	26/6	31/6	36/6	39/6
ALUMINIUM PATTERN	12/6	13/	15/6	18/-
ALUMINIUM BEHIND LENS	13/6	14/	16/6	19/-
Time Exposure Valve 5/- extra.									
If fitted with cord release instead of ball and tube, for Hand Cameras, 1/- less.									
EXTRA RAPID. TIME AND INSTANTANEOUS including Speed Indicator	...	23/6	25/6	28/6	32/6	37/6
FOREGROUND. TIME AND INSTANTANEOUS " " "	...	23/6	25/6	28/6	32/6	37/6
Time Exposure Valve 5/- extra.									
STEREOSCOPIC, including Speed Indicator.									
TIME AND INSTANTANEOUS, at 3 in. or 3½ in. centres	20/-	21/-	23/-	27/-
Do. do. BEHIND LENS do.	22/6	23/6	25/6	29/6
3½ in. centres, 2/- extra; 3¾ in. centres, 4/- extra.									
ADJUSTABLE PANEL FOR BEHIND LENS extra, 7/6.									
Time Exposure Valve, 5/- extra.									
SNAP SHOT, including Speed Indicator. STANDARD PATTERN	10/-	10/-	12/-	15/-	20/6
for INSTANTANEOUS only. ALUMINIUM do.	9/-	9/-	10/6	13/6
Do. Do. without Speed Indicator. STANDARD PATTERN	5/-	5/-	6/6	8/-
SPECIAL, including Speed Indicator For more RAPID INSTANTANEOUS	...	23/6	25/6	28/6	32/6	37/6
SILENT STUDIO	20/6	23/6	27/6	32/6	37/6	42/6	47/6
"PANOPTIC" British Made, BETWEEN LENS SHUTTER, TIME & INST.	35/-

All THORNTON-PICKARD SHUTTERS are now fitted with Speed Indicator free of charge, except the Studio pattern, for which it is not required. New Patent "Disappearing Cord" fitted to Shutters, 3/6 extra. Old Shutters fitted with this improvement, 5/-.

PRICE LIST OF FOCAL PLANE SHUTTERS.

Original Model, Including Speed Indicator.

REDUCED PRICES.		ENGLISH AND AMERICAN SIZES.		CONTINENTAL SIZES.	
4½ × 3½ (quarter-plate)	£1 5 0	6½ × 3½	£2 0 0	8½ × 6½ (whole plate)	£2 10 0
5 × 4	1 10 0	7½ × 5	2 2 6	9 × 12 Centimetres	£1 10 0
6½ × 4½ (half-plate)	1 15 0	8 × 5	2 7 6	13 × 18	2 2 6
				18 × 24	3 0 0
				24 × 30	4 5 0

New Model, including Speed Indicator and New Speed Tablet.

		ENGLISH AND AMERICAN SIZES.		CONTINENTAL SIZES.	
4½ × 3½ (quarter-plate)	£2 5 0	7½ × 5	£3 6 0	12 × 10	£5 5 0
5 × 4	2 10 0	8 × 5	3 10 0	15 × 12	6 6 0
6½ × 4½	2 15 0	8½ × 6½	3 10 0		
7 × 5	3 6 0	10 × 8	4 4 0	9 × 12 Centimetres	£2 10 0
				13 × 18	3 6 0
				18 × 24	4 4 0
				24 × 30	5 5 0

Intermediate sizes are made to order at same price as next size larger.

No extra charge is made for fitting to current patterns of our own Cameras, but when fitted to obsolete patterns of our manufacture and to other makers. Cameras, a charge of from 5/- to 10/- is made, according to the size of Shutter and the amount of work involved.

SHUTTER ACCESSORIES.

- Patent Time Exposure Valve, with Arabesque Ball, Tube and Teat 6/9
- Patent Ball Compressor with Special Ball, for the use with Valve, 2/6, fitting 6d. 3/-
- Special Ball only, for use with Compressor 7d.
- "Arabesque" Ball, Tube and Teat complete 1/9
- "Arabesque" Ball only, suitable for above Release 10d.
- Other extras see page 234.
- Patent Rubber Moulding, per foot, or any less quantity 8d.
- Adapters for fitting Shutters to more than one Lens, Rubber only 8d.
- " Wooden, lined with Rubber, up to 2½ inches 1/6
- " " " any size larger 2/-

- Brass Binding Shutters for hot climates, 5/- extra up to 3 inch size, larger sizes in proportion.
- Self-Capping Blind. Both T. and I. and Snap-Shot Shutters can be fitted with this. Prices up to 2½ inch size 5/- extra
- " " " 3½ " " " " " " " 7/6 "
- Larger sizes and Stereoscopic size 10/- "
- Extra Panels for Behind Lens Shutters, up to 2½ in 1/6, 3½ in, 2/-, 5 in. 2/6
- Ditto ditto "Royal" ditto up to 2½ in., 2/- : 3 in., 2/6.
- Ditto ditto Stereoscopic Shutter 2/-; with Adjustable Centres 7/6

INSTRUCTIONS FOR ORDERING.

FOR ORDINARY SHUTTERS—Please send a narrow strip of paper just long enough to meet round the Lens Hood or Tube, NOT an impression or pencil drawing.

FOR BEHIND LENS SHUTTERS—When sending flanges or panels to be fitted please make an arrow mark ∇ showing the top. The flange or shutter can then be fitted so that when the lens is screwed home, the Iris diaphragm will be in the correct position.

FOR STEREOCOPIC SHUTTERS—In addition to strip as above, please state exact distance apart of Lenses from centre to centre.

FOR FOCAL PLANE SHUTTERS—This Shutter is fitted into the back of the Camera in the same way as the Reversible Back, and, in fact, takes the place of it. The Dark Slide or Plate Holder fits into the back of the Shutter in the usual manner.

For fitting, the Reversible Back with Focussing Screen and a Dark Slide or Plateholder must be sent to us when ordering; otherwise we supply the Shutter with an adapting frame which may be cut down and fitted to the required size by any cabinet-maker. If the Camera has no Reversible Back it is sufficient to send a Dark Slide or Plate Holder,

New Patent "Disappearing Cord" fitted to new Shutters, 3/6 extra. Fitted to Shutters previously supplied, 5/-.

THORNTON - PICKARD LENSES.

"Ruby," "Amber," AND THE

New "Pantoplanat"

RECTILINEAR LENSES,

With Iris Diaphragm, $f/8$.

The Finest Quality Lenses obtainable at prices quoted.

Suitable for both Thornton-Pickard and other makes of Cameras.

STEREO. WORK.—Charge for pairing suitable Lenses, 5/- extra.

"Pantoplanat" Lens $f/8$.

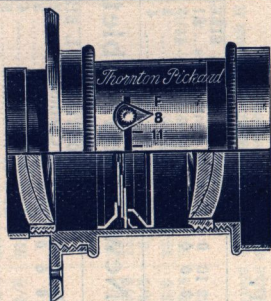
The New "Pantoplanat" Lens is a really first-class Lens at an extremely low price. It gives very fine definition, and both the back and front components can be used separately for landscape views and similar work. No such excellent value has hitherto been offered, and the Lens is strongly recommended as thoroughly efficient and satisfactory.

Amber Rapid Rectilinear Lens, $f/8$, with Iris Diaphragm,

This is a good general all-round lens for all kinds of Photography, including instantaneous work. It is free from distortion, and gives perfectly straight lines and fine definition. This lens may also be converted into a long focus lens by using one of the combinations only. This practically gives two lenses of different foci.

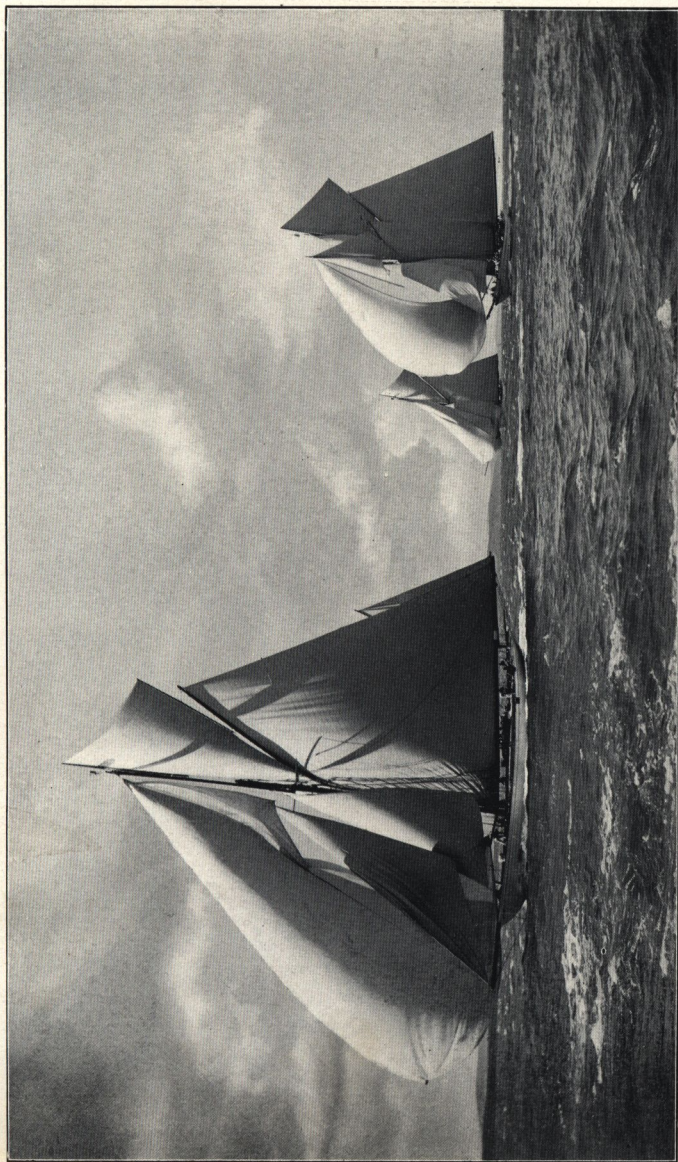
Ruby Rapid Rectilinear Lens, $f/8$, with Iris diaphragm.

This is a very fine lens for all-round work. It has a flatter field than the previous lens, and is of the highest finish. It can also be converted into a long focus lens as above.



Name and Description.	To Cover Plates. Inches.	Equiv. Focus. Inches.	Focus of Back or Front Combination. Inches.	Price.
"PANTOPLANAT" with Iris $f/8$.	$6\frac{1}{2} \times 4\frac{3}{4}$	9	16	£ s. d. 1 5 0
	$7\frac{1}{2} \times 5$	1 10 0
	$8\frac{1}{2} \times 6\frac{1}{2}$	11	20	2 10 0
	10×8	4 0 0
"Amber" Rapid Rectilinear with Iris $f/8$	$4\frac{1}{2} \times 3\frac{1}{4}$ and	$5\frac{1}{2}$	$10\frac{1}{2}$	1 7 6
	5×4	9	16	1 10 0
	$6\frac{1}{2} \times 4\frac{3}{4}$	11	20	2 0 0
	$7\frac{1}{2} \times 5$	11	20	2 15 0
	$8\frac{1}{2} \times 6\frac{1}{2}$ 10×8	$13\frac{1}{2}$...	4 10 0
"Ruby" Rapid Rectilinear with Iris $f/8$	$4\frac{1}{2} \times 3\frac{1}{4}$ and	$5\frac{1}{2}$	$10\frac{1}{2}$	2 0 0
	5×4	9	16	2 10 0
	$6\frac{1}{2} \times 4\frac{3}{4}$	$9\frac{1}{2}$	17	3 0 0
	$7\frac{1}{2} \times 5$	11	20	4 0 0
	$8\frac{1}{2} \times 6\frac{1}{2}$	$13\frac{1}{2}$...	6 5 0
	10×8

ANASTIGMATS and other Lenses by the leading makers, including Ross Goerz, Ross-Zeiss, Dallmeyer, Cooke, Aldis, etc., are stocked by us, and supplied at the respective Manufacturers' prices.

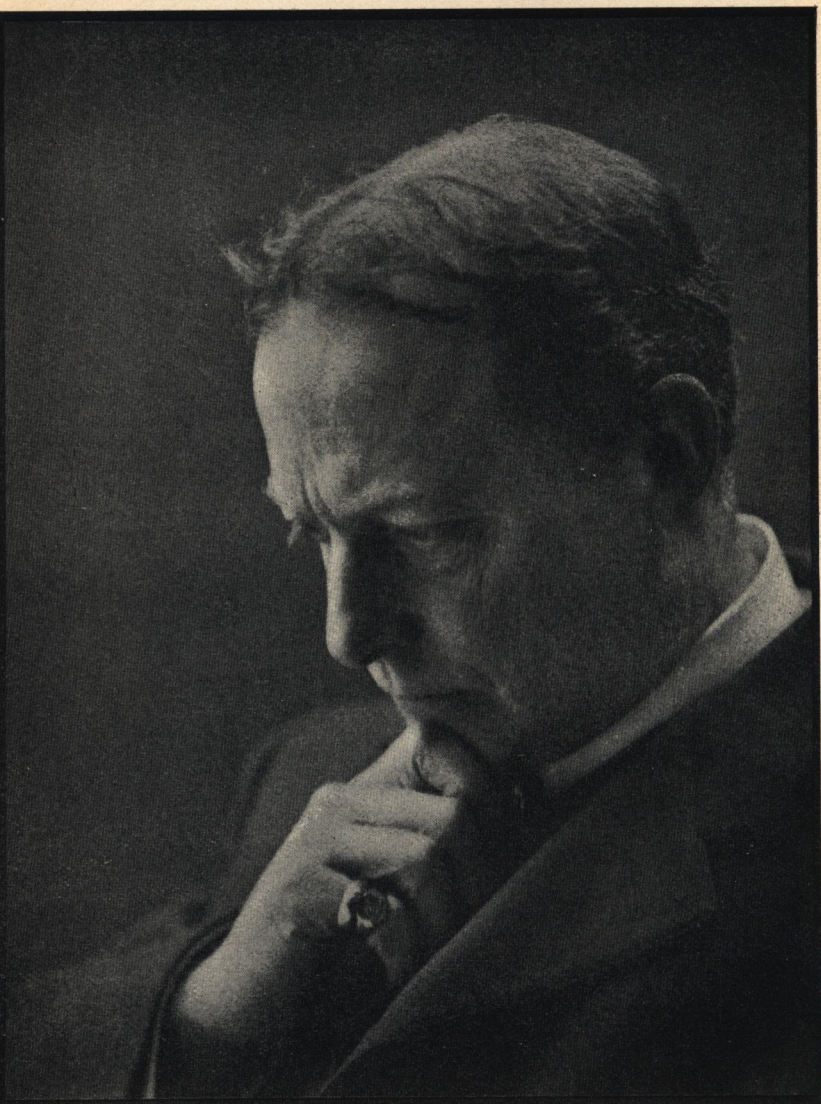


Exposure $\frac{1}{36}$ second.

YACHTING.

Taken with a Thornton-Pickard "Special" Shutter.

ERNEST O. KIRK, Cowes, I.W.



Exposure 4 seconds.

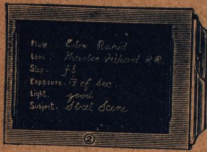
PORTRAIT.

E. O. HOPPE, London.

Taken with a Thornton-Pickard "Royal Ruby Triple Extension Camera."

Plate Holder, THORNTON-PICKARD PATENT.

WITH PATENT SPRING BAR & LIGHT TRAP.
THE SHUTTERS ARE MADE OF ALUMINIUM,
AND PULL RIGHT OUT.



The important features of this Plate Holder are the automatic spring bar, which allows of the plate being instantly put in or taken out by simply pressing with the finger; the Aluminium Shutters, which are not affected by either heat or damp, and the new patent Automatic Light Trap are so arranged as to make the Plate Holder absolutely safe with the most sensitive plates.

PRICES.

Each Plate Holder takes two plates, or two cut films in Carriers.						
For Plates.....	3 1/2 x 4 1/2	5 x 4	6 1/2 x 4 1/2	7 1/2 x 5	8 1/2 x 6 1/2	10 x 8
Price each.....	8/6	9/6	10/6	12/-	15/-	21/-

Note.—Patent Exposure Recorders are fitted to above Plate Holders, and to “Amber” and “Ruby” Bookform Slides, without extra charge.

PLATE CARRIERS OR INNER FRAMES.

Are used for the purpose of adapting any given size of Plate Holder or Dark Slide for smaller plates, e.g., 1/2-plate for 1/4-plates, 1/4-plate for postcard, 1/4-plate for 1/8-plates, etc. The Carriers are thin wooden frames, finished black, and fit in the Dark Slides like a plate. They are provided with a central aperture suitable for the particular size of smaller plates to be used. The prices are arranged according to the outside size as below. When ordering, please state size of Camera and size of smaller plate it is desired to use. Two Carriers are required for a Double Slide.

Price each..... 1/2-plate, 1/-; 7/2 x 5, 1/2; 1/4-plate, 1/3. 10 x 8, 2/-; 12 x 10, 2/6.
 POSTCARD-SIZE CARRIERS to fit 1/4-plate Slides, 1/- each.
 Postage on one Carrier, 2d.; Two or more, 3d.

TELEPHOTO LENS SUPPORT.

Light, Strong, and Readily Detachable.
A BOON TO TELEPHOTO WORKERS.

Effectually prevents all vibration when using long Camera Extensions.

“Remember, that when using long Camera extensions it is advisable to have a strut, or some similar support, under the front of the Camera to prevent vibration.”—Vide Dallmeyer’s “Adon” Telephoto Booklet.

The Lens Support, or Strut, here illustrated, admirably answers the purpose for which it was introduced. It is made in brass to match Camera Fittings, and is highly finished. The attachment to, and detachment from the Camera, is effected in the simplest possible manner. This support has a great range of adjustment in the length, so that the Camera and Tripod can be moved about as required. When the correct position is decided upon, the support is firmly clamped by the turn of a screw. The Camera will then be found perfectly rigid, and all risk of movement during exposure obviated.



The Neatest and Best Arrangement for rigidly supporting Telephoto and other heavy Lenses.

PRICE 12/6.

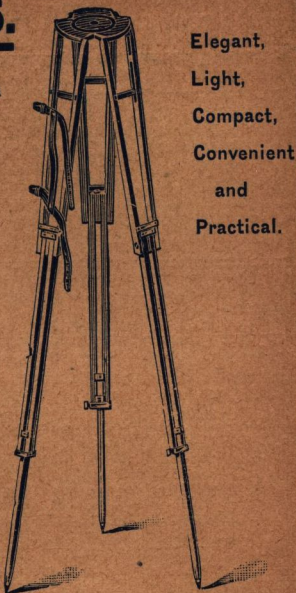
AUTOMATIC STANDS.

(THORNTON-PICKARD PATENT)

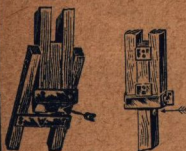
Machine Made and Hand Polished, with Patent Self-Locking Joints.

PRICES.	2-Fold.	3-Fold.
No. 1. For $\frac{1}{4}$ -plate and $\frac{1}{2}$ -plate Cameras	13/-	17/6
No. 2. Extra Strong for $\frac{1}{4}$ -plate, and 10x8 Cameras	—	22/6
No. 3. Special Extra Strong, for 10x8 and 12x10 Triple Extension Cameras...	—	30/-
Stand Top with patent Folding Screw, for any of above.	3/6	3/6

Imperial 3-Fold Stand and Top, $\frac{1}{2}$ -Plate 7/6, $\frac{1}{4}$ -Plate 12/6.



Elegant,
Light,
Compact,
Convenient
and
Practical.



SELF-LOCKING JOINTS.

In the 3-Fold Stands the lower section of each leg is adjustable for uneven ground. All Stands fitted with handle straps.

For Telescopic Hand Camera Stands see complete Catalogue.

THREE-FOLD STAND.

NEGATIVE HOLDER (For Enlarging.)

When using Cameras in connection with enlarging, the Negative Holder forms a convenient method of holding the negative to be enlarged from. The Holder is a frame, finished black, which fits into the place usually occupied by the reversing back of the Camera.

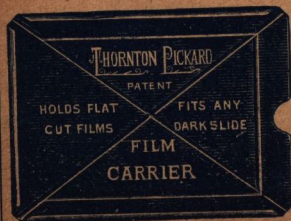
PRICES.

$\frac{1}{4}$ -plate... 4/6 | 5x4... 4/9 | $\frac{1}{2}$ -plate... 5/- | 1/1-plate... 5/6 | 13x18c/m... 5/6

N.B.—For other makes of Camera than our own, it is necessary to send the Reversing Back, in order that Holder may be suitably adapted.

FILM CARRIER A Perfect Carrier for Sheet or Cut Films, Light, Rigid and Cheap.

Thornton-Pickard Patent.



This Carrier will fit any make of Dark Slide or Plate-Holder that a plate will fit, and holds the film perfectly straight and flat. It is made of extremely thin sheet metal. Strength & rigidity are obtained by the indented ribs or corrugations that run in various directions.

Price List.

To take one film.	$\frac{1}{4}$ -pl. 4 $\frac{1}{2}$ x 3 $\frac{1}{2}$	5x4	$\frac{1}{2}$ -Pl. 6 $\frac{1}{2}$ x 4 $\frac{3}{4}$	7 $\frac{1}{2}$ x 5	$\frac{1}{4}$ -pl. 8 $\frac{1}{2}$ x 6 $\frac{1}{2}$
Price each	6d.	6d.	9d.	10d.	1/-
Postage extra	1d.	1d.	1d.	1d.	2d.
Price in boxes containing six...	2/6	2/9	4/-	4/6	5/6
Postage extra.....	2d.	2d.	3d.	3d.	3d.

Complete 80-page Illustrated Catalogue post free.