

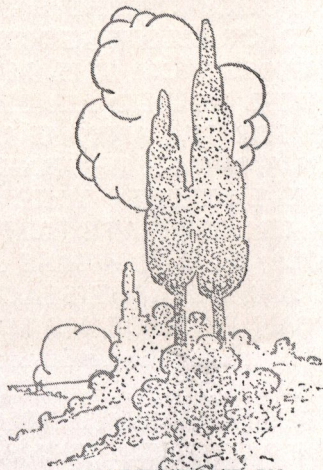
1917



THE
PREMO
CAMERA

PREMOS

for
NINETEEN
HUNDRED
SEVENTEEN



MANUFACTURED BY
ROCHESTER OPTICAL DIVISION
EASTMAN KODAK CO.
ROCHESTER, NEW YORK

PREMOS

HAVE BEEN MANUFACTURED AND
HAVE GIVEN CONTINUOUS GOOD
SERVICE TO THE PUBLIC FOR OVER
THIRTY YEARS. THEY NOT ONLY
HAVE THESE LONG YEARS OF KEEN
MANUFACTURING EXPERIENCE BE-
HIND THEM, BUT ARE ALSO BACKED
BY THE POLICY OF THE EASTMAN
KODAK CO. OF ALLOWING NOTHING
TO BE PLACED ON THE MARKET
WHICH WILL NOT DO ALL THAT IS
CLAIMED FOR IT. ANYONE INTER-
ESTED IN AMATEUR PHOTOGRAPHY
WILL FIND LISTED IN THIS CATA-
LOGUE A LINE OF PLATE, FILM PACK,
AND ROLL FILM CAMERAS FROM
WHICH A MOST SATISFACTORY
CHOICE CAN BE MADE, NO MATTER
WHAT THE REQUIREMENTS MAY BE,
AND EACH MODEL IS EFFICIENT
AND DEPENDABLE IN THE FULLEST
SENSE OF THOSE TERMS.

Gift of
M. R. Kelly
Apr 1963



It Does the Work the Easy Way.

Whether you are just taking up the delightful recreation of photography or have reached the point of replacing or adding to your present equipment, everything else being equal, you will logically select the camera which is easiest to handle—which requires the least attention to details.

Premo Film Pack cameras are the simplest of all cameras because they can be loaded and unloaded, and prepared for successive exposures more quickly and easily than can cameras of any other type.

There are no intricacies of any kind in the entire process of making pictures with a Premo. To load, merely open the hinged back of the camera, drop in the Premo Film Pack and close the back. To change the films for successive exposures, pull out from the top, successive black paper tabs. To unload, open back and lift out film pack, which is automatically rendered light-tight when the last tab is withdrawn.

For development the tank system may be readily employed, the Premo Film Pack Tank placing the beginner with a Premo Film Pack Camera upon the same plane in development with the most experienced workers. One other important advantage is deserving of special mention here. From a Premo Film Pack one or more films may be removed for development at any time. You don't have to wait until the entire twelve films are exposed, but whenever you like, can take your camera to the dark-room, remove pack from camera, take out such films as have been exposed, and replace the pack without injury to the remaining films.

The thin flat form of the pack and its simple principle make possible the manufacture of unusually light, compact, and inexpensive cam-

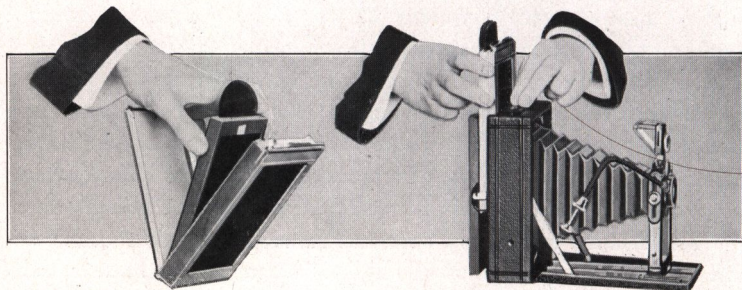
eras for its use. Premo Film Pack Cameras are made in the Eastman factories by workmen who have devoted their lives to camera construction. The shutters are the mechanically perfect evolutions of years of experience. The lenses are the best that can be obtained in each type. Every camera, every lens, every shutter is subjected to that rigid inspection for quality and reliability which is inflexibly demanded of all products sold under the Eastman name. Premo Film Pack film is cut from the same stock as Eastman N. C. film. This combination of simple, tested, suitably equipped cameras with the finest, most dependable film in the world is full assurance of the quality of results which you will obtain in a Premo Film Pack Camera.

PREMO PLATE CAMERAS

The first Premo, marketed some thirty years ago, was a plate camera. It soon became the leading camera of its time, and in the plate camera field from that time up to the present day, the Premo has set the standard. Those who prefer plate cameras for their photographic work will find in the Premo line that convenience of operating that compact form, that carefully thought out working equipment which only years of specialized experience could produce.

PREMO FILM PACK ADAPTERS

With the advent of the Premo Film Pack, it was found that by means of a specially constructed holder, the Premo Film Pack could be easily used in any Premo Plate camera. This holder or Premo Film Pack Adapter as we have named it, is approximately the same size and shape as an ordinary plate holder, it is provided with a slide and has a



hinged back, so that the pack can be readily dropped into place just as in the film pack cameras. The adapter slides into the camera just like a plate holder, but it gives the plate camera user a tremendous advantage. Not only does it convert his instrument into a daylight loading camera with all the conveniences and light weight of films, but it also offers him the feature of ground glass focusing between each exposure, as the adapter may be removed at any time, light-protected by the slide. No special adjustments are necessary, plate holder and adapter are interchangeable in the camera at all times. Regular prices for Premo adapters are as follows: $3\frac{1}{4} \times 4\frac{1}{4}$, \$1.00; $3 \times 5\frac{1}{4}$, \$1.50; $3\frac{1}{4} \times 5\frac{1}{2}$, \$1.50; 4×5 , \$1.50; 5×7 , \$2.50.

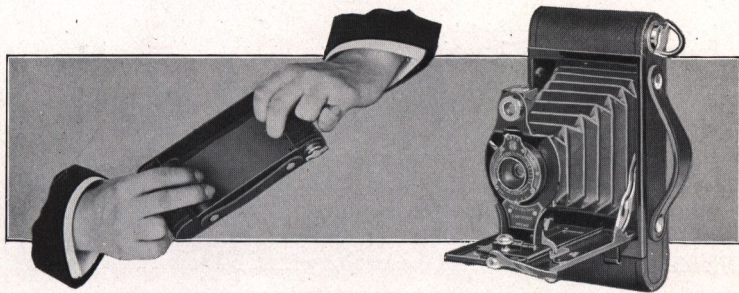
CARTRIDGE PREMOS

To round out the line, for the benefit of Premo customers who wish to use roll film cameras, we offer several models of cartridge film Premos. These cameras match up with the Premo reputation in every particular. They use Eastman Cartridge Film, and all excepting the No. 00 offer the advantage of daylight development by the tank method.

Every Premo is accompanied by a simply worded, complete book of instructions, which if followed, will enable anyone, even without previous experience, to make good pictures with a Premo from the beginning, and every purchaser of a Premo camera who will send us his or her name on the blank form bound in the instruction book will receive for one year, free of all expense, "Kodakery," a monthly magazine of general photographic help, instruction and entertainment.

ROCHESTER OPTICAL DIVISION,

EASTMAN KODAK CO., ROCHESTER, N. Y.

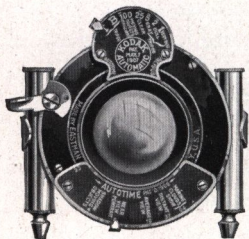


KODAK BALL BEARING SHUTTER

THIS shutter works on ball bearings, giving it great accuracy, and is made in several models corresponding with the scope and design of the camera to which it is fitted. The illustration shows the shutter as fitted to camera equipped with Kodak Anastigmat lens, *f.* 7.7, but all models work upon the same general system. The model regularly fitted to Premoette Jr. No. 1 and Folding Cartridge Premo No. 2 has time and bulb actions and indicated speeds of $1/25$ and $1/50$ second. It has no cable release.



The models supplied with Folding Cartridge Premos Nos. 2A, 2C, 3A, Premoette Jr., No. 1A, Premoette Senior and Premo No. 8 have the same speeds as the No. 0 and in addition the higher speed of $1/100$ second. These are supplied with cable releases in all cases excepting as fitted to 2A Folding Cartridge Premo, where it has finger release only. An illustration of the particular model supplied will be found on the page with each camera.



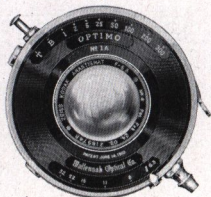
KODAK AUTOMATIC SHUTTER

The Kodak Automatic is an unusually accurate shutter, adjusted for time, bulb and graduated speeds of 1, $1/2$, $1/5$, $1/25$ and $1/100$ second. It works with either cable or finger release, and is regularly supplied with the Premos Nos. 9 and 10.

OPTIMO SHUTTER

This shutter is recommended only where anastigmat lenses are to be used as it is constructed to attain the highest possible speed for a between-the-lens hand camera shutter. It is a shutter of the setting type, leaves opening in star shape, and besides time and bulb exposure actions, has variable indicated speeds of 1, $1/2$, $1/5$, $1/25$, $1/50$, $1/100$, $1/200$ and $1/300$ seconds. It is very accurate on all speeds, is handsomely finished and works with cable or finger release.

This shutter is regularly supplied on the Premo No. 12 and as a special equipment with the Premos Nos. 9 and 10.



P R E M O J U N I O R



GOOD enough to satisfy the thousands of grown-up amateurs using them, these are ideal cameras for boys and girls, because of their low cost, substantial construction and simple operation.

They require no focusing, no estimating of distances, but are always ready for instant action. To this simplicity of mechanical construction is added the simplicity of loading and operating of the Premo Film Pack, so that we have no hesitancy in saying that the Premo Jr. cameras are the simplest, practical cameras with which pictures can be made. They are reliable in every respect. All Premo Jr. lenses are carefully tested and each instrument must go through the same rigid inspection for dependability as do the most expensive models.

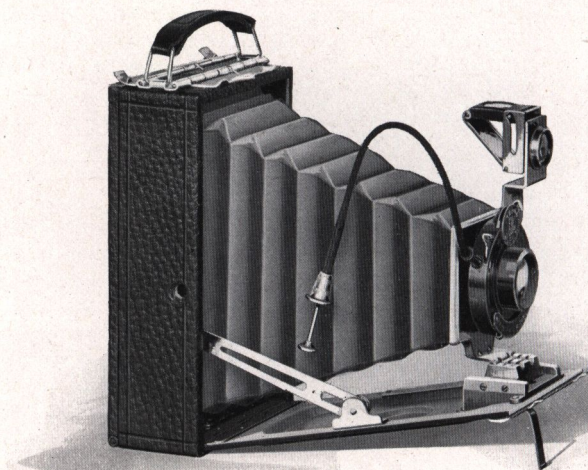
SPECIFICATIONS

Capacity: 12 exposures without reloading. Size of Camera: No. 1, $3\frac{1}{8} \times 4\frac{1}{2} \times 5\frac{3}{4}$ in.; No. 1A, $3\frac{1}{2} \times 5\frac{1}{2} \times 5\frac{7}{8}$ in.; No. 3, $4 \times 5\frac{1}{2} \times 5\frac{3}{4}$ in. Weight: No. 1, 11 ozs.; No. 1A, 14 ozs.; No. 3, 20 ozs. Shutters: Rotary Automatic, with diaphragm stops. Lens: No. 1, Meniscus; Nos. 1A and 3, Meniscus Achromatic. Finders: two. Tripod Sockets: two.

PRICES

	No. 1 $2\frac{1}{4} \times 3\frac{1}{4}$	No. 1A $2\frac{1}{2} \times 4\frac{1}{4}$	No. 3 $3\frac{1}{4} \times 4\frac{1}{4}$
Premo Junior, as per specifications	2.75 ^{2.75} 2.00	\$ 3.50	\$ 4.50
Carrying Case	1.25	1.75	1.10/95
Premo Film Pack (12 exposures)	.40	.50	.70
Kodak Portrait Attachment (See page 37)	.50	.50	.50

PREMOETTE JUNIOR



ALL Premo Film Pack cameras are smaller, for corresponding size pictures, than are cameras of any other type, this compactness being made possible by the size and shape of the Premo Film Packs.

Utilizing this feature, in the Premoette Jr. we are able to offer the smallest possible camera for two of the most popular sizes of amateur pictures— $2\frac{1}{4} \times 3\frac{1}{4}$ and $2\frac{1}{2} \times 4\frac{1}{4}$. We have made this camera largely of aluminum, have made its operation correspond in simplicity with the simplicity of the film pack, and we have made it as efficient and reliable, within its scope, as a camera can be made.

The Premoette Jr. is just a trifle larger than the picture it makes, and it is so easy to operate, so well manufactured, so carefully equipped and tested, that the merest beginner in photography can use a Premoette Jr. and get pictures of excellent quality from the very start. Besides this, Premoette Jr. negatives are of such good quality that enlargements up to almost any size can be made from them, when desired.



PREMOETTE JUNIOR

Thus, with this little camera, which can be carried in a boy's pocket or a lady's hand-bag, it is easily possible, by the simple process of enlargement, to get pictures as large as those made with the most bulky view cameras. It is a camera which will make a convenient and valuable addition to the equipment of any amateur photographer.

It is offered with three different lens equipments—meniscus achromatic, rapid rectilinear, and Kodak Anastigmat, *f*. 7.7. All lenses used must be of the highest quality in their grade and each one must stand a rigid test before it is allowed to go out with the camera. The shutter is the smoothly working, precise Kodak Ball Bearing. With the No. 1, the No. 0 Ball Bearing shutter is supplied. This has speeds of 1/25 and 1/50 second and time and bulb exposure actions, without cable release. With the No. 1A, the No. 1 Ball Bearing shutter is used, having speeds of 1/25, 1/50 and 1/100, with the time and bulb actions and is supplied with cable release. The illustration shows the No. 1A size.

Both models are covered with genuine grain leather and carefully finished in every detail. They are very attractive in appearance and can be instantly focused for objects at any distance. Using the Premo Film Pack, they can be loaded and unloaded and films changed for successive exposures almost in less time than it takes to tell.

SPECIFICATIONS

PREMOETTE JR. No. 1. Capacity: 12 film pack exposures without reloading. Dimensions: $1\frac{1}{2} \times 3 \times 4\frac{3}{4}$ in. Weight: 12 ozs. Lens: Meniscus Achromatic. Shutter: Kodak Ball Bearing No. 0 (See page 6). Finder: collapsible, reversible, brilliant. Tripod Sockets: two.

PREMOETTE JR. No. 1A. Capacity: 12 film pack exposures without reloading. Dimensions: $1\frac{3}{4} \times 3\frac{3}{4} \times 5\frac{3}{4}$ in. Weight: 18 ozs. Lens: Meniscus Achromatic. Shutter: Kodak Ball Bearing (See page 6). Finder: brilliant, reversible, collapsible. Tripod Sockets: two.

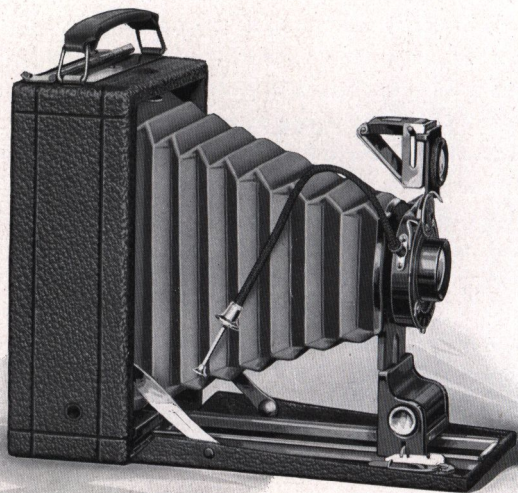
PRICES

	No. 1 $2\frac{1}{4} \times 3\frac{1}{4}$	No. 1A $2\frac{1}{2} \times 4\frac{1}{4}$
Premoette Jr. with Meniscus Achromatic Lens and		
Kodak Ball Bearing Shutter	6.50 6.00	\$ 7.00 ⁸⁰⁰
Ditto, with Planatograph Lens	8.50 8.00	9.00 ⁰⁰⁰
Ditto, with Kodak Anastigmat Lens, <i>f</i> . 7.7	14.50 13.00	14.00 ¹⁰⁰
Carrying Case (sole leather)	1.60	2.40
Premo Film Pack (12 exposures)40	.50
Kodak Portrait Attachment (See page 37)50	.50

Best case

1.50

PREMOETTE SENIOR



THE Premoette Sr. is a common sense camera without frills but with great efficiency for the general run of amateur work. It is most carefully made in every detail, but the underlying idea has been to keep the camera as simple as possible in operation and to avoid all special adjustments or features which were not essential to the making of first class pictures under average conditions of amateur photography. It makes no pretensions to covering the field of the specialist, but it will give the best of results for those who wish to make good, clear, sharp, every-day pictures of the persons and things they are interested in.

This idea has not only enabled us to keep the price of the camera low, but also to offer a camera which, in compactness, light weight, ease of operating and all-round simplicity, has a considerable margin over the average type of camera.

The Premoette Sr. can be loaded in an instant in any light. Just



PREMOETTE SENIOR

open back of camera, drop in Premo Film Pack, close back and it's done. To change films for successive exposures, just pull out successive film pack tabs, an operation which may be done in less than a second.

The camera is furnished with either R. R. lens or Kodak Anastigmat, *f*.7.7., being especially recommended with the anastigmat. This lens, for definition is the equal of any anastigmat made, and has a higher speed than any R. R. lens. Thus in getting this camera the amateur assures himself not only of the microscopic definition of the finest anastigmat, but of a greater speed than is possible with the ordinarily equipped camera. The shutter is the Kodak Ball Bearing with time and bulb actions and retarded speed of $1/25$, $1/50$ and $1/100$ seconds. It works with either cable or finger release and is unusually accurate and reliable.

The lens support, or standard, is exceptionally rigid, and is operated along the runways by means of an automatic clamp, making it an easy matter to draw the lens out to the focusing scale, where an automatic focusing lock provides for the instant focusing of objects at any distance.

Premoette Srs. are covered with genuine leather of selected grain, metal parts are finished in nickel and black lacquer, and they are cameras which the merest beginner can successfully use. When fitted with Kodak Portrait Attachment the pleasing proportions of the pictures make these cameras excellent for home portraiture.

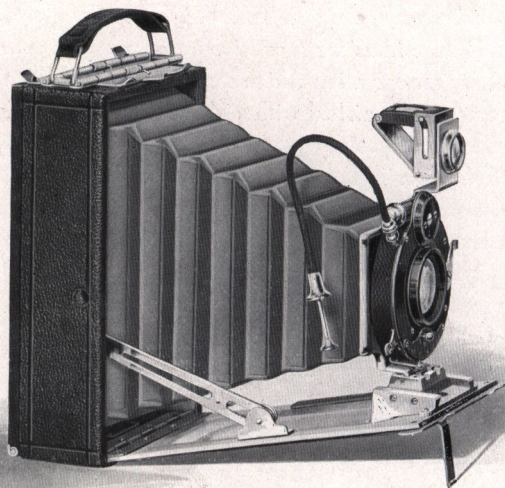
SPECIFICATIONS

Capacity: 12 exposures. Box: seasoned wood. Bed and Back: aluminum. Dimensions: $2\frac{1}{2} \times 4\frac{1}{4}$, $1\frac{7}{8} \times 3\frac{5}{8} \times 5\frac{3}{8}$ in.; $3\frac{1}{4} \times 4\frac{1}{4}$, $1\frac{1}{8} \times 4\frac{1}{8} \times 5\frac{3}{8}$ in.; 3A, $3\frac{1}{4} \times 5\frac{1}{2}$, $2\frac{1}{4} \times 4\frac{1}{2} \times 7\frac{1}{8}$ in. Weight: $2\frac{1}{2} \times 4\frac{1}{4}$, 21 ozs.; $3\frac{1}{4} \times 4\frac{1}{4}$, 22 ozs.; 3A, $3\frac{1}{4} \times 5\frac{1}{2}$, 35 ozs. Lens: Rapid Rectilinear. Shutter, Kodak Ball Bearing, with cable release (See page 6). Tripod Sockets: two. Finder: reversible, brilliant, collapsible. Automatic standard clamp. Automatic focusing lock.

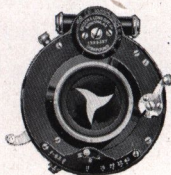
PRICES

	$2\frac{1}{2} \times 4\frac{1}{4}$	$3\frac{1}{4} \times 4\frac{1}{4}$	3A $3\frac{1}{4} \times 5\frac{1}{2}$
Premoette Sr. with R. R. Lens and Kodak Ball Bearing Shutter	\$12.50	\$12.50	\$12.50
Ditto, with Kodak Anastigmat Lens, <i>f</i> .7.7	18.00 17.00	17.00 16.00	17.50 16.50
Sole Leather Carrying Case	2.75	2.75	3.25
Premo Film Pack (12 exposures)	.50	.70	.80
Kodak Portrait Attachment (See page 37)	.50	.50	.50

PREMOETTE JR. SPECIAL



IN this camera is offered the light weight, the compactness and the simplicity of the regular Premoette Jr. combined with a rich finish and those capabilities for superior work assured by a high speed lens and a shutter of the finest type. The shutter works for time and bulb exposure actions and has graduated speeds of from 1 second to 1/300 second, with the No. 1 Special, and to 1/250 second with the No. 1A. The lens is made specially for hand camera work and combines speed and definition in a remarkable degree.



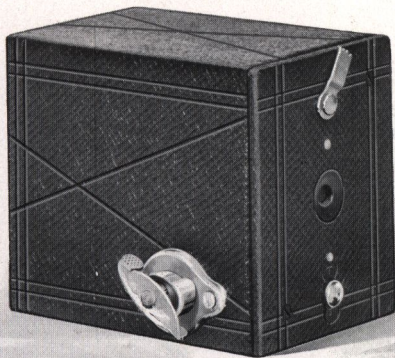
SPECIFICATIONS

Capacity: 12 $2\frac{1}{4} \times 3\frac{1}{4}$ film pack exposures without reloading. Dimensions: No. 1, $1\frac{1}{2} \times 3 \times 4\frac{3}{4}$ in.; No. 1A, $1\frac{3}{4} \times 3\frac{1}{4} \times 5\frac{3}{4}$ in. Weight: No. 1, 13 ozs.; No. 1A, 19 ozs. Lens: Bausch & Lomb Kodak Anastigmat, *f*.6.3. Shutter: Compound. Finder: brilliant, reversible, collapsible. Tripod Sockets: two.

PRICES

	No. 1 $2\frac{1}{4} \times 3\frac{1}{4}$	No. 1A $2\frac{1}{2} \times 4\frac{1}{4}$
Premoette Jr. Special with Bausch & Lomb Kodak Anastigmat Lens, <i>f</i> .6.3, and Compound Shutter	\$39.50	\$49.50
Grain Leather Carrying Case	2.40	2.75
Premo Film Pack (12 exposures)	.40	.50
Kodak Portrait Attachment (See page 37)	.50	.50

CARTRIDGE PREMO No. 00



IN introducing the No. 00 Cartridge Premo, we felt that if we could produce an inexpensive camera that was really dependable, substantial and simple, hundreds of thousands of children would want them. If such a demand could be created, we could systematize our factories, manufacture them in exceptionally large quantities and thus so cut the cost of production as to be able to offer them to the public at the low price of 75 cents. This we have done, and the results, after one year, have even exceeded our expectations.

The cameras are being used throughout the country, not only by children, but by grown-up people as well, and the pictures which are being made by these inexpensive instruments compare favorably with those made with much larger and much higher priced cameras.

This camera is fitted with automatic shutter and first quality meniscus lens carefully tested. V-shape lines on the top and sides indicate the scope of the view, and the camera is covered with a lasting quality of imitation leather. It loads with a special 6 exposure cartridge, and while this is not N. C. film, it is of standard Eastman quality.

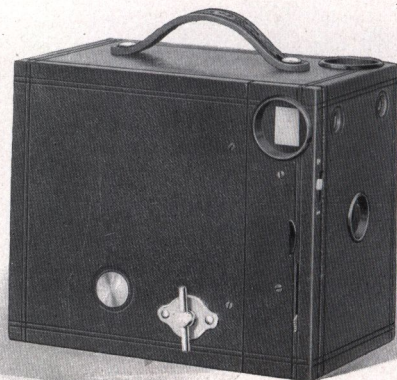
SPECIFICATIONS

For rectangular pictures $1\frac{1}{4} \times 1\frac{3}{4}$ inches. Capacity: 6 exposures without reloading. Size of camera: $2 \times 2\frac{5}{8} \times 3\frac{1}{8}$ in. Lens: Meniscus, $\frac{2}{4}$ -inch focus. Shutter: Automatic for time and snap shot exposures.

PRICES

Cartridge Premo No. 00, Meniscus Lens and Automatic Shutter	\$0.75 ¹⁰⁰
Eastman Film Cartridge, 6 exposures, No. 35	.10

CARTRIDGE PREMOS NOS. 2 & 2A



THESE are cameras of the fixed focus type, requiring no focusing or estimating of distances. They take regular Eastman N. C. film cartridges, which may be loaded, unloaded and developed in full daylight, and will appeal especially to those who wish to make pictures on roll film in the easiest way and at the minimum of expense.

The cameras are equipped with automatic shutters, working for time or "snap shot" exposures, two finders and tested lenses. They are covered with serviceable imitation leather and will make negatives of a quality that yield good enlargements up to any reasonable size.

SPECIFICATIONS

For rectangular pictures, No. 2, $2\frac{1}{4} \times 3\frac{1}{4}$ in.; No. 2A, $2\frac{1}{2} \times 4\frac{1}{4}$ in. Capacity: No. 2, 6 exposures without reloading; No. 2A, 12 exposures without reloading. Size of camera: No. 2, $5\frac{5}{8} \times 4 \times 3\frac{1}{4}$ in.; No. 2A, $3\frac{7}{8} \times 5\frac{1}{8} \times 6\frac{1}{8}$ in. Weight: No. 2, 13 ozs.; No. 2A, 21 ozs. Lens: No. 2, Meniscus; No. 2A, Meniscus Achromatic. Shutter: Eastman Rotary, with three stops. Two finders.

PRICES

	No. 2	No. 2A
Cartridge Premo, as per specifications	\$ 2.50 \$ 2.15	\$ 3.00
Carrying Case, with shoulder strap	1.00	1.10
N. C. Film Cartridge, 12 exposures (No. 116)		.50
Ditto, 6 ex. (No. 120 for No. 2; No. 116 for No. 2A)	.20	.25
Kodak Portrait Attachment (See page 37)	.50	.50

NO. 2C CARTRIDGE PREMO



THE $2\frac{7}{8} \times 4\frac{7}{8}$ size is a new proportion for amateur pictures which was introduced last year. Its shape is so pleasing, it lends itself to such artistic composition, that we have added to the simple, inexpensive Cartridge Premos, a camera for this desirable size.

In design it follows closely that of the 2 and 2A models, it loads with Eastman N. C. Film and offers all the advantages of day-light-all-the-way photography.

The 2C is a reliable, capable camera, one with which it is really difficult to go wrong, as it requires no focusing or estimating of distances. It is always ready for action, is supplied with automatic shutter for time and snap shot exposures, tested meniscus achromatic lens, two finders and two tripod sockets.

SPECIFICATIONS

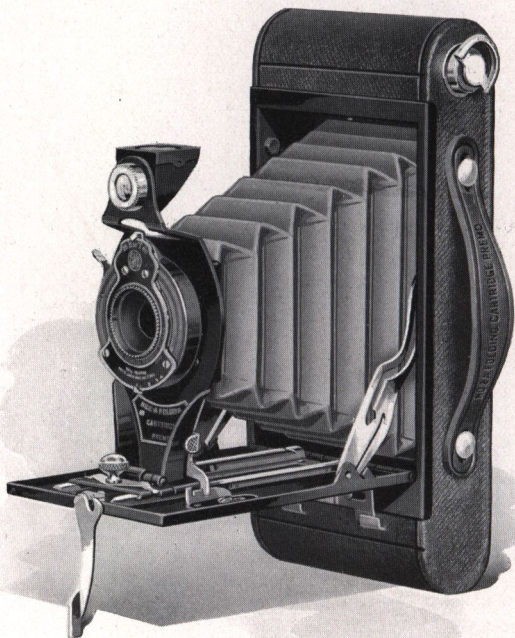
For rectangular pictures, $2\frac{7}{8} \times 4\frac{7}{8}$ in. Capacity: 10 exposures without reloading. Size of camera: $3\frac{7}{8} \times 6 \times 7\frac{1}{4}$ in. Weight: 25 ozs. Lens: Meniscus Achromatic. $5\frac{1}{2}$ -inch focus. Shutter: Eastman Rotary, with three stops. Two finders. Two tripod sockets.

PRICES

No. 2C Cartridge Premo, Meniscus Achromatic lens, Eastman Rotary Shutter	\$4.00 ^{4.50}
Carrying Case with shoulder strap	1.25
N. C. Film Cartridge, 10 exposures (No. 130)	.60
Ditto, 6 exposures	.35
Kodak Portrait Attachment (See page 37)	.50

FOLDING CARTRIDGE PREMOS

NOS. 2 AND 2A



IN introducing these models last year, our aim was to provide for the average amateur as simple, easily workable roll film cameras as could be made. There was no attempt at complicated mechanism or adjustment—just a plain camera for every-day work, properly equipped for first class picture-making under all conditions where the amateur would ordinarily care to use a camera.

Their compact, graceful form, their simple operation, their inexpensiveness and the quality of pictures which they made so appealed to the photographic public, that within a



F. C. PREMOS NOS. 2 AND 2A

single year the Folding Cartridge Premo model has become established as one of the most popular cameras ever offered the public.

Alike in general appearance and operation, the 2 and 2A models differ in the size of the pictures they make and slightly in lens and shutter equipment. The No. 2 is regularly fitted with a meniscus lens and the No. 0 Kodak Ball Bearing shutter. This shutter has time and bulb exposure actions and instantaneous speeds of $1/25$ and $1/50$ second. The No. 2A is regularly fitted with a meniscus achromatic lens and the No. 1 Kodak Ball Bearing shutter without cable release. This shutter has the same actions and speeds of the No. 0 and in addition, the faster speed of $1/100$ second. Both cameras are offered also with R. R. lens.

These Premos load with regular Eastman N. C. film. They are constructed on a new and very simple principle for loading and unloading in daylight, and as the film may be developed in the Kodak Film Tank, no dark room is necessary for any step. They are neatly finished and covered with a serviceable, attractive grade of imitation leather. Either will slip easily into an ordinary pocket.

SPECIFICATIONS

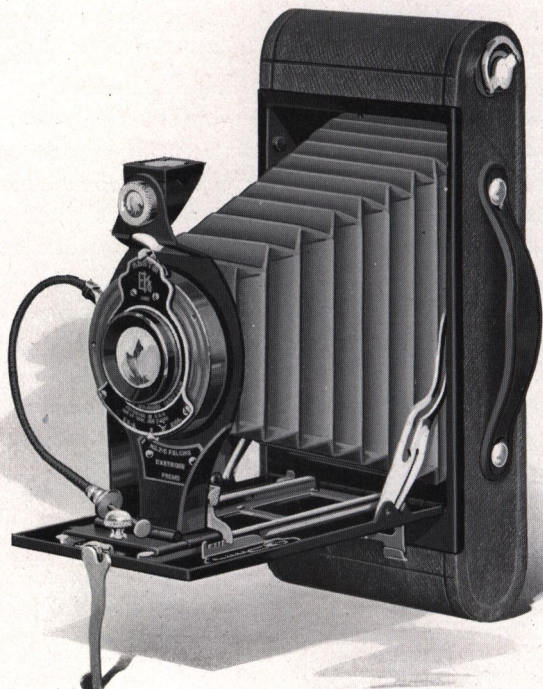
No. 2: For rectangular pictures, $2\frac{1}{4} \times 3\frac{1}{4}$ in. Capacity: 6 exposures without reloading. Size of camera: $1\frac{1}{4} \times 3\frac{3}{8} \times 6\frac{1}{2}$ in. Weight: 19 ozs. Lens: Meniscus Achromatic, $3\frac{1}{2}$ -inch focus. Also supplied with Rapid Rectilinear Lens, if desired. Shutter: Kodak Ball Bearing. Reversible finder, two tripod sockets, automatic focusing lock, black leather bellows.

No. 2A: For rectangular pictures $2\frac{1}{2} \times 4\frac{1}{4}$ in. Capacity: 12 exposures without reloading. Size of camera: $1\frac{1}{8} \times 3\frac{3}{8} \times 7\frac{7}{8}$ in. Weight: 25 ozs. Lens: Meniscus Achromatic, $4\frac{1}{4}$ -inch focus. Also supplied with Rapid Rectilinear Lens, if desired. Shutter: Kodak Ball Bearing (See page 6). Reversible finder, two tripod sockets, automatic focusing lock, black leather bellows.

PRICES

	No. 2	No. 2A
Folding Cartridge Premo with single lens and Kodak Ball Bearing Shutter	5.00	\$ 7.00
Ditto, with R. R. Lens	6.50	9.00
Cartridge Premo Carrying Case	1.00	1.10
N. C. Film Cartridge, 12 exposures (No. 116)		.50
Ditto, 6 exposures (No. 120 for No. 2, No. 116 for No. 2A)	.20	.25
Kodak Portrait Attachment (See page 37)	.50	.50

FOLDING CARTRIDGE PREMOS NOS. 2C AND 3A



THE success of the 2 and 2A Folding Cartridge Premos, introduced last year, naturally leads us to round out the line this year with cameras of the same general type for the two larger popular sizes of amateur pictures. The No. 2C, which we illustrate on this page, is for $2\frac{7}{8} \times 4\frac{7}{8}$ pictures. The No. 3A, similar to the 2C in every respect, excepting size, is for the favorite $3\frac{1}{4} \times 5\frac{1}{2}$ (post card) pictures.



Never before has such exceptional value been offered in cartridge film cameras for these popular sizes, and it is only

F. C. PREMOS NOS. 2C AND 3A

through a long perfected factory organization and production in large quantities that we are able to offer cameras of such quality at such prices. These cameras are made of first quality material, by high class workmen, and each camera receives the same rigid tests for reliability as are applied to all cameras coming from the Eastman factories.

The box is made of aluminum, which means strength and light weight, the standard is so formed as to be unusually rigid and metal parts are finished in nickel and black enamel. The covering is of a substantial grade of imitation leather, the finder is reversible, two tripod sockets are provided and an automatic focusing lock so that the lens can be set positively for any distance in an instant.

The cameras load with standard Eastman N. C. film. This is not only an assurance of the quality of the results to be obtained, but means that every process—loading, unloading, developing—can be performed in daylight, eliminating the dark-room entirely.

The shape of the negatives made by these cameras is very appropriate for portraiture. The Kodak Portrait Attachment adapts either of these cameras to home portraiture.

SPECIFICATIONS

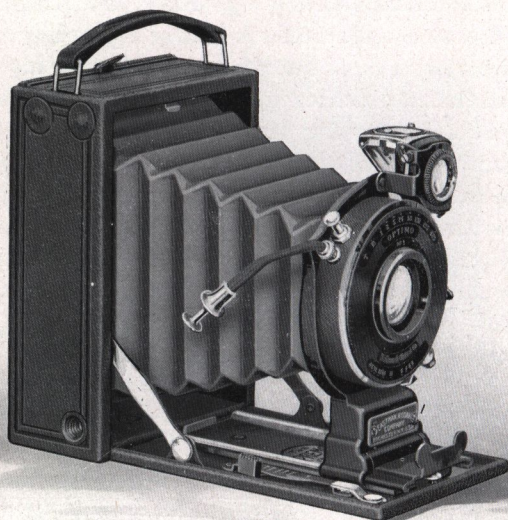
No. 2C. For rectangular pictures, $2\frac{7}{8} \times 4\frac{7}{8}$ in. Capacity: 10 exposures without reloading. Size of camera: $1\frac{3}{4} \times 3\frac{3}{8} \times 8\frac{5}{8}$ in. Weight: 28 ozs. Lens: Meniscus Achromatic, 5-inch focus. Also supplied with Rapid Rectilinear Lens, if desired. Shutter: Kodak Ball Bearing (See page 6). Reversible finder, two tripod sockets, automatic focusing lock, black leather bellows.

No. 3A. For rectangular pictures, $3\frac{1}{4} \times 5\frac{1}{2}$ in. Capacity: 10 exposures without reloading. Size of camera $1\frac{3}{4} \times 4\frac{1}{8} \times 9\frac{1}{8}$ in. Weight: 28 ozs. Lens: Meniscus Achromatic, 5 $\frac{3}{8}$ -inch focus. Also supplied with Rapid Rectilinear Lens if desired. Shutter: Kodak Ball Bearing (See page 6). Reversible finder, two tripod sockets, automatic focusing lock, black leather bellows.

PRICES

	No. 2C	No. 3A
Folding Cartridge Premo with single lens and Kodak Ball Bearing Shutter	10.50 12.50 \$ 8.00	\$ 9.00 11.50
Ditto, with R. R. Lens	12.50 14.50 10.00	11.00 13.00 14.00
Cartridge Premo Carrying Case	1.10 1.35	1.35
N. C. Film Cartridge, 10 exposures (No. 130 for No. 2C, No. 122 for 3A)	.60	.70
Ditto, 6 exposures	.35	.40
Kodak Portrait Attachment (See page 37)	.50	.50

P R E M O N U M B E R 12



THE smaller the camera the more convenient and easier to carry. Heretofore extreme compactness in cameras has meant the sacrifice of some features, restricting the general photographic scope of the instrument.

But here is a thin, smooth, handsomely finished camera, surprisingly compact and light, yet so cleverly constructed as to offer every essential feature for making the best of pictures under all conditions of amateur photography, be they easy or difficult—a camera that provides for the user the very limit of photographic efficiency.

It makes $2\frac{1}{4} \times 3\frac{1}{4}$ pictures, it takes films or plates with equal facility, it has a ground glass for accurate focusing and composition, or it may be used with focusing scale. It has two tripod sockets, reversible brilliant finder with revolving mask, and special focusing lever, making it a very simple matter to set the lens in correct focus for objects at any distance.



P R E M O N U M B E R 12

It is equipped with Optimo Shutter (highest speed $1/300$ second) and a choice of the speediest anastigmat lenses including the Kodak Anastigmat $f.6.3$, and the B. & L. Ic Tessar lens, $f.4.5$.

With such anastigmat equipments and high speed shutter, there is no condition of amateur photography, aside from focal plane work, in which this camera will not make good pictures where pictures could possibly be obtained. In poor lights and under generally adverse conditions, this camera will make snap shots where time exposures would be necessary with the ordinarily equipped camera.

For those who do not care for the high speed anastigmats, we offer this camera equipped with Kodak Ball Bearing shutter and Kodak Anastigmat lens, $f.7.7$, or with Rapid Rectilinear lens. With these equipments, considering the camera's all-around convenience and capabilities, the prices are extremely moderate.

The camera can be carried in a boy's pocket or a lady's handbag. It is simple to operate, most attractive in appearance. It is covered with the finest quality grain leather, handsomely embossed and richly finished in nickel and black enamel.

SPECIFICATIONS

Size of picture: $2\frac{1}{4} \times 3\frac{1}{4}$. Capacity: 12 film or one plate exposure. Box: aluminum. Bed: aluminum, with special lever focusing device. Finder: reversible, with revolving mask. Tripod sockets: two. Lens: Bausch & Lomb Kodak Anastigmat, $f.6.3$, or other lenses as per price list. Shutter: Optimo or Kodak Ball Bearing as per price list. Dimensions: $1\frac{5}{8} \times 3\frac{1}{4} \times 4\frac{5}{8}$ in. Weight: 24 ozs.

PRICES

Premo No. 12 with Optimo Shutter and Bausch & Lomb Kodak Anastigmat Lens, $f.6.3$, $4\frac{5}{8}$ -inch focus, including Film Pack Adapter and one Plate Holder

$2\frac{1}{4} \times 3\frac{1}{4}$

Ditto, with Kodak Anastigmat Lens, $f.6.3$, $4\frac{3}{8}$ -inch focus

\$45.00

Ditto, with B. & L. Special Anastigmat Lens, $f.6.3$, $4\frac{1}{8}$ -inch focus

40.00

Ditto, with B. & L. Tessar, Ser. 11b Lens, $f.6.3$, $4\frac{5}{8}$ -inch focus

36.00

Ditto, with B. & L. Tessar, Ser. Ic Lens, $f.4.5$, $3\frac{1}{2}$ -inch focus

54.00

Ditto, with B. & L. Kodak Anastigmat Lens, $f.6.3$, $3\frac{5}{8}$ -inch focus, and Compound Shutter

56.00

Ditto, with Kodak Ball Bearing Shutter and R. R. Lens

35.00

Ditto, with Kodak Anastigmat Lens, $f.7.7$

15.00

Carrying Case, grain leather, velvet lined

20.00

Single Plate Holder, each

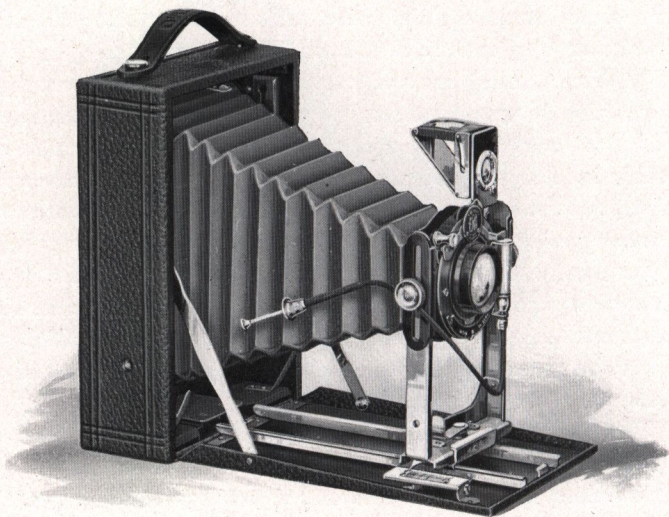
3.25

Premo Film Pack, 12 exposures

.50

.40

P R E M O N U M B E R 8



HERE is a sterling camera—one of really exceptional worth for those who wish to invest but little in an outfit for varied use.

It is both a film and a plate camera. Plates are loaded in an ordinary plate holder, films by means of the Premo Film Pack Adapter, when the camera becomes a daylight loading instrument, offering all the advantages of a film camera, and more. For with the Premo No. 8, the ground glass may be used for accurate focusing and composition at any time.

This does not mean that you have to use the ground glass, as the Premo No. 8 can be focused by scale just as any camera. But when you do want to use the ground glass, as for instance in indoor portraiture, it is always there.



The shutter furnished with this camera is a modified form of the Kodak Ball Bearing, having all the precision and smooth action of that shutter. It is graduated for speeds of $1/25$, $1/50$ and $1/100$ seconds, as

P R E M O N U M B E R 8

well as for bulb and time exposures. The regular lens supplied is our standard R. R. At a slight additional charge the $3\frac{1}{4} \times 5\frac{1}{2}$ (post card) size is furnished with the Kodak Anastigmat lens, *f*. 7.7. This makes a remarkably efficient camera, with the microscopic definition and greater speed of the anastigmat, at a very small price.

The camera is made of seasoned wood, with front bed of aluminum and metal runways, making an instrument of unusual compactness for a plate camera. The bed and box are covered with black leather, the bellows is black and the metal parts being finished in nickel, give the camera a neat, attractive appearance.

The standard is made of metal and is very rigid, a rising and falling front is supplied and the finder is of the new Premo collapsible type.

The Premo No. 8 is made for the three larger popular sizes of pictures—the $3\frac{1}{4} \times 5\frac{1}{2}$, the 4×5 and the 5×7 . Contact prints of these sizes are as large pictures as the amateur ordinarily desires. But the quality of the negatives is such that enlargements of practically any size may be had from them. The proportions of these sizes are exceptionally well suited for figure work, so that when fitted with Kodak Portrait Attachment, and with its ground glass for focusing, the Premo No. 8 is unusually effective for home portraiture.

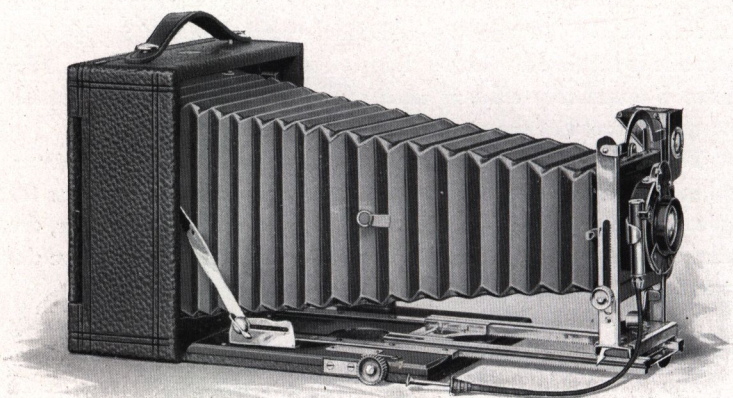
SPECIFICATIONS

Capacity: 12 film or 2 plate exposures. Box: kiln-dried wood, covered with leather. Standard: made of metal, with rising and falling front. Carrying Case: imitation leather, with compartments for holders. Finder: reversible, brilliant, collapsible. Tripod Sockets: two. Lens: Planatograph. Shutter: Kodak Ball Bearing with cable release (See page 6). Dimensions: $3\frac{1}{4} \times 5\frac{1}{2}$, $2 \times 5 \times 7\frac{1}{4}$ in.; 4×5 , $2 \times 5\frac{1}{4} \times 6\frac{1}{2}$ in.; 5×7 , $2\frac{1}{4} \times 6\frac{1}{2} \times 8\frac{1}{2}$ in. Weight: $3\frac{1}{4} \times 5\frac{1}{2}$, 34 ozs.; 4×5 , 30 ozs.; 5×7 , 42 ozs.

PRICES

	4x5	3A $3\frac{1}{4} \times 5\frac{1}{2}$	5x7
Premo No. 8, with Planatograph Lens, Kodak Ball Bearing Shutter, Carry- ing Case and Plate Holder	\$17.50	\$18.50	\$20.00
Ditto, with Kodak Anastigmat Lens, <i>f</i> . 7.7		\$22.50	\$26.00
Premo Film Pack Adapter	1.50	1.50	2.50
Premo Film Pack (12 exposures)	.90	.80	1.60
Kodak Portrait Attachment (See page 37)	.50	.50	.50

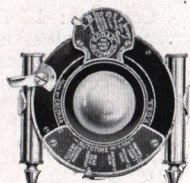
P R E M O N U M B E R 9



THIS efficient camera is designed for the amateur who wishes an instrument of very wide scope. Taking films or plates with equal facility and with its complete equipment and accurate, convenient, mechanical adjustments, it is a camera never before approached at the price.

The bellows is of black leather and has sufficient draw to permit the use of the single lens combination or a telephoto attachment of several magnifications. The extension plate is actuated by rack and pinion working with exceptional smoothness and provided with a simple locking device.

The standard is constructed of metal, is very rigid, and incorporates a rising and falling front of great latitude. This in connection with the swing bed construction makes it an easy matter to take pictures of tall buildings, and the like, without tipping the camera, with its attendant distortion of the picture. The lens board is removable, and the finder is the new Premo collapsible brilliant.



This camera is fitted with the patented Premo reversible back. This is the simplest back to reverse ever offered, for with its unique spring

P R E M O N U M B E R 9

lug construction it may be instantly removed and reversed without any tendency to stick or bind.

The instrument is of the most substantial construction, all working parts operate with mechanical precision and it is finished in the most careful manner. The covering is of black leather, specially selected for its beautiful grain, the bed is finished in black and the metal parts are heavily nickeled.

The regular lens and shutter equipment comprises the Kodak Automatic shutter and the Planatograph lens—a perfectly satisfactory equipment for every-day amateur photography.

In the 3A and 4 x 5 sizes the camera is offered, at a slight increase in price, fitted with the new Kodak Anastigmat lens, *f.* 7.7. For those who wish an anastigmat of even greater speed, it is supplied with the new Kodak Anastigmat lens working at *f.* 6.3 and the Optimo shutter with cable release. There is also a choice of several other high speed anastigmat fittings.

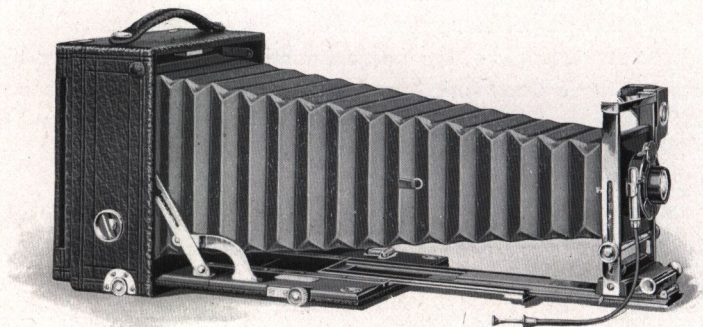
SPECIFICATIONS

Capacity: 12 film or 2 plate exposures. Box: kiln-dried wood, covered with fine grain leather. Bed: hand polished wood, finished in black, and supplied with rack and pinion for fine focusing, and swing arrangement. Back: spring catch, reversible. Standard: made of metal, with rising and falling front. Finder: brilliant, reversible, collapsible. Tripod Socket: one. Lens: Planatograph. Shutter: Kodak Automatic (See page 6). Bellows: black leather; draw, $3\frac{1}{4} \times 5\frac{1}{2}$, 13 in.; 4×5 , 13 in.; 5×7 , $15\frac{1}{4}$ in. Dimensions: $3\frac{1}{4} \times 5\frac{1}{2}$, $3 \times 7 \times 7$ in.; 4×5 , $3 \times 7 \times 7$ in.; 5×7 , $2\frac{7}{8} \times 8\frac{1}{4} \times 8\frac{1}{4}$ in. Weight: $3\frac{1}{4} \times 5\frac{1}{2}$, 63 ozs.; 4×5 , 63 ozs.; 5×7 , 76 ozs.

PRICES

	4x5	3A $3\frac{1}{4} \times 5\frac{1}{2}$	5x7
Premo No. 9, with Planatograph Lens, Kodak Automatic Shutter, Case and Holder	36.00 \$32.00	36.00 \$32.00	43.00 \$37.00
Ditto, with Kodak Anastigmat Lens, <i>f.</i> 7.7	40.00 \$32.00	40.00 \$32.00	
Ditto, with Kodak Anastigmat Lens, <i>f.</i> 6.3 and Optimo Shutter	63.00	63.00	
Ditto, with Bausch & Lomb Kodak Anas- tigmat Lens, <i>f.</i> 6.3, and Optimo Shutter	70.75 69.50	73.25 69.50	85.50 85.50
Premo Film Pack Adapter	1.50	1.50	2.50
Premo Film Pack (12 exposures)	.90	.80	1.60
Kodak Portrait Attachment (See page 37)	.50	.50	.50
<i>Leather case</i>	3.00	3.00	3.50
<i>" " " 4 holders</i>			

PREMO NUMBER 10



DESIGNED to meet the requirements of the most advanced amateur and of the specialist, the Premo No. 10 is equipped with every known adjustment desirable in a hand camera. It has triple extension, long bellows draw for telephoto work and copying, drop bed for wide angle use, rising and falling front, swing bed and reversible back.

It takes films or plates with equal facility, is simple in all its parts and is finished in exceptionally handsome style.

SPECIFICATIONS

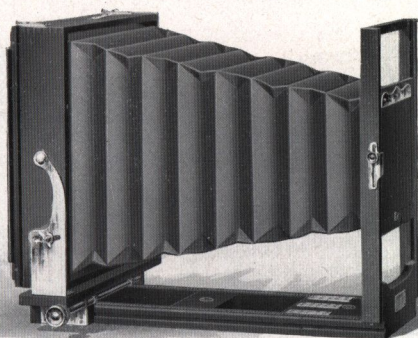
Capacity: 12 film or 2 plate exposures. Box: mahogany, leather covered. Bed: mahogany, with highly polished black finish and with triple extension runway. Back: spring catch, reversible. Swing: vertical; rack and pinion actuated, with locking device. Front: rising and falling rack and pinion actuated with locking device. Lens Board: removable, size $3\frac{1}{2} \times 3\frac{1}{2}$ in. Finder: Brilliant, reversible. Tripod Sockets: two. Lens: Planatograph. Shutter: Kodak Automatic (See page 6). Carrying Case: sole leather, plush lined, with compartments for holders. Bellows: black leather; draw, 19 in. Dimensions: $4 \times 8\frac{1}{2} \times 8\frac{1}{2}$ in. Weight: $5\frac{1}{2}$ lbs. Automatic Standard Clamp.

PRICES

Premo No. 10, with Planatograph Lens and Kodak Auto. Shutter, Carrying Case and Plate Holder	
Ditto, with Bausch & Lomb Kodak Anastigmat Lens, f.6.3 and Optimo Shutter	
Ditto, with Bausch & Lomb Protar VIIa Lens, f.7	
Premo Film Pack Adapter	
Premo Film Pack	

5x7
~~75.00~~ 78.50
 124.00/312
 146.00/167.50
 2.50
 1.60

THE R. O. C. VIEW



AN inexpensive, reliable view camera for those who do not require extra long bellows capacity. It is especially adapted for interior work as it focuses from the rear only, and the back may be moved as close to the front as desired so that extreme wide angle lenses may be used.

The front board is so wide that stereoscopic lenses may be used, and the standard is strong and rigid, affording a safe support for the heaviest lenses. Vertical and horizontal swings, rising and falling front and reversible back are provided. The camera is strongly built for service and will last indefinitely.

The price includes case and either plate holder or film holder for Eastman Portrait films. The plate holder will be supplied unless otherwise specified.

SPECIFICATIONS

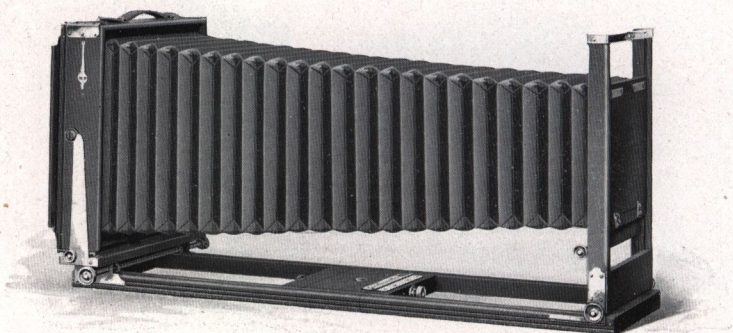
Bellows: draw, 5 x 7, 14 in.; $6\frac{1}{2} \times 8\frac{1}{2}$, $15\frac{1}{2}$ in.; 8 x 10, 17 in. Weight, 5 x 7, $4\frac{3}{4}$ lbs.; $6\frac{1}{2} \times 8\frac{1}{2}$, 6 lbs.; 8 x 10, $6\frac{3}{4}$ lbs. Size of Lens Board: 5 x 7, $3\frac{3}{4} \times 6\frac{3}{8}$ in.; $6\frac{1}{2} \times 8\frac{1}{2}$, $4\frac{1}{2} \times 6\frac{1}{2}$ in.; 8 x 10, 5 x 6 in. Carrying Case, square style canvas.

PRICES

	5x7	$6\frac{1}{2} \times 8\frac{1}{2}$	8x10
R. O. C. View with Case and Holder	\$15.00	\$17.00	\$19.00
R. O. C. View Complete Outfit*	30.00	39.00	47.00
Extra Carrying Case, Regular	2.50	2.75	3.00
R. O. C. Plate Holders	1.00	1.10	1.25
Eastman Portrait Film Holders	1.00	1.10	1.25

*R. O. C. Complete Outfit includes: R. O. C. View Camera, Symmetrical Lens and D. V. Auto Shutter, six Plate Holders, Combination Tripod, Focusing Cloth, and Carrying Case holding complete outfit.

EASTMAN VIEW NO. 1



AS an inexpensive view camera, suitably equipped for all-around commercial work, the Eastman View No. 1 is without question the best value ever offered.

The camera is made of the best quality cherry with mahogany finish. Metal parts are of polished brass, and corners are dove-tailed and reinforced by metal angle pieces.

It has no complications, but is built for practical service, and its various adjustments are such as to work conveniently and easily.

It has double extensions and both front and back are actuated by rack and pinion, so that the camera may be focused from either end, and the back can be racked up as close to the front as desired. This provides for the use of lenses of the widest angle. The camera has rising and falling front, actuated by rack and pinion, and this can be locked solidly at any point by merely pushing in the pinion. The front board is removable and is large enough to accommodate any lens.

Both horizontal and vertical swings are provided, and the back is reversible and furnished with a vertical cut-off board, so that two negatives may be made on one plate, if desired.

A strap handle and plumb level are supplied and an automatic bellows support which prevents sagging of the bellows at all times.

The price includes one double plate holder and canvas carrying case. This case is of the combination style, with three compartments in the

EASTMAN VIEW NO. 1

bottom; one for the camera, one for plate holders and the other for focusing cloth, lenses or other accessories. On top of these is an extra compartment for carrying the tripod.

The case is strongly made, with corners reinforced, and full length straps of the best leather.

The price includes case and one holder, either film or plate. Unless specified we will furnish plate holder.

For those who want larger size view cameras we will furnish the regular Empire State model in the 11 x 14 size.



SPECIFICATIONS

Bellows: draw, 5 x 7, 22½ in.; 6½ x 8½, 26 in.; 8 x 10, 29 in. Weight: 5 x 7, 6 lbs.; 6½ x 8½, 8 lbs.; 8 x 10, 9½ lbs. Size of Lens Board: 5 x 7, 4¼ x 4¼ in.; 6½ x 8½, 4¾ x 4¾ in.; 8 x 10, 4¾ x 4¾ in. Carrying Case, long style canvas, combination style, with compartment for camera, holders and tripod.

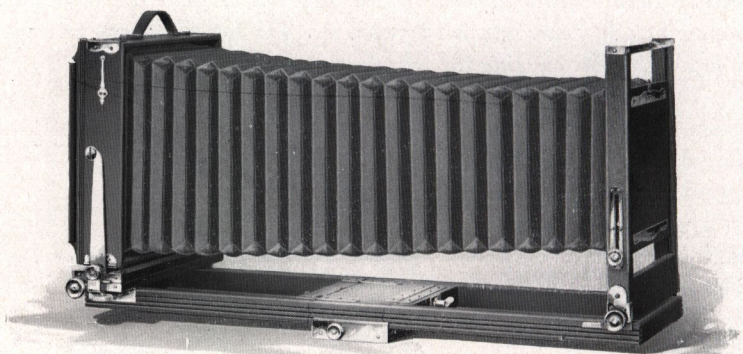
Note—The 11 x 14 Empire State is furnished with one plate holder and square style camera case. Price, \$50.00.

PRICES

	5x7	6½x8½	8x10
Eastman View No. 1 with Case and Holder			
Eastman View No. 1 Complete Outfit*	\$23.00	\$25.00	\$27.00
Complete Outfit as above, but with Rapid Rectigraphic instead of Symmetrical Lens	38.00	47.00	55.00
Extra Carrying Case	49.00	59.00	69.00
Extra Lens Board	4.50	4.75	5.00
Eastman View Plate Holder	.30	.40	.50
Eastman Portrait Film Holders	1.25	1.35	1.50
	1.00	1.10	1.25

*Eastman View No. 1 Complete Outfit includes: Eastman View No. 1 Camera, Symmetrical Lens, Double Valve Auto. Shutter, six Plate Holders, Combination Tripod, Focusing Cloth, and Case to hold complete outfit.

EASTMAN VIEW NO. 2



ALL our experience in view camera making, all the information that we have been able to collect, of the needs of the view camera worker, have been put into the proposition of providing in this model a view camera as near to perfection as human ingenuity can devise.

It is constructed with the idea of providing the greatest possible solidity and strength throughout. The extensions are extra thick, the standard is very large and will furnish an absolutely rigid support for the heaviest lenses. Corners are dovetailed and reinforced by brass angle pieces, and the metal parts are all made of the best quality of brass, fully lacquered.

The front board is removable and very large. The rising and falling front is actuated by rack and pinion. The camera has both vertical and horizontal swing and can be focused from either front or rear by rack and pinion, so that the back can be racked up as close to the front as desired. Thus lenses of the widest angle can be used. A sliding tripod block is provided so that the camera can always be supported directly above the tripod or the weight distributed, as the operator may wish.

The back is reversible, a plumb level and strap handle are supplied and both horizontal and vertical cut-off boards are furnished so that

EASTMAN VIEW NO. 2

four different negatives can be made on one plate if desired. The bellows of this camera is made of genuine leather and a spring arrangement working automatically prevents it from sagging at any time.

The method of locking extensions is very convenient, not by means of the old fashioned, long threaded screw, but by a specially constructed device which locks firmly by merely being pushed in and given a quarter turn. The back extension, which is detachable, in addition to this device is further strengthened by two clamp catches which hold it absolutely rigid.

Especial attention is called to the 7 x 11 size—a proportion which will prove very attractive to many workers. This camera has an especially wide front board with sliding arrangement which permits the centering of the lens on either half of the 7 x 11 plate when it is desired to make two exposures on one plate. The swing of this model is of unusual latitude to obtain its fullest value, for architectural work.

Anticipating that most photographers will prefer to use Eastman Portrait film with this size camera, we will supply the Eastman Portrait Film Holder with it unless otherwise specified.

SPECIFICATIONS

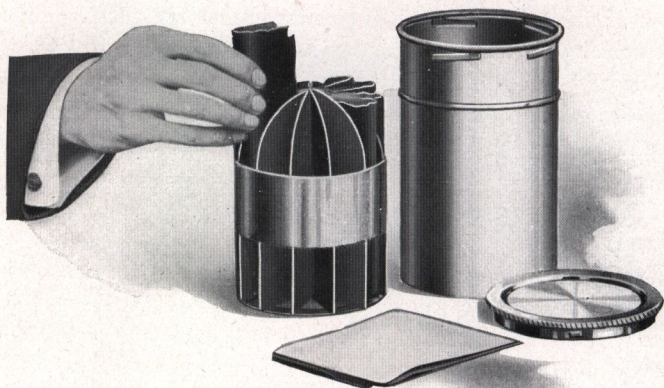
Bellows: draw, 5 x 7, 23 in.; $6\frac{1}{2} \times 8\frac{1}{2}$, 26 $\frac{1}{2}$ in.; 8 x 10, 29 $\frac{1}{2}$ in.; 7 x 11, 31 in. Weight: 5 x 7, 7 lbs.; $6\frac{1}{2} \times 8\frac{1}{2}$, 10 $\frac{1}{2}$ lbs.; 8 x 10, 11 $\frac{1}{4}$ lbs.; 7 x 11, 15 $\frac{1}{2}$ lbs. Size of Lens Board: 5 x 7, $4\frac{1}{2} \times 4\frac{1}{2}$ in.; $6\frac{1}{2} \times 8\frac{1}{2}$, 6 x 6 in.; 8 x 10, 6 x 6 in.; 7 x 11, 6 $\frac{1}{8} \times 3\frac{1}{8}$ in. Carrying Case, canvas, combination style, with compartments for camera, holders and tripod. All operating nuts on the right side, binding nuts on the left hand side.

PRICES

	5x7	$6\frac{1}{2} \times 8\frac{1}{2}$	8x10	7x11
Eastman View No. 2 with Case and Holder	\$30.00	\$33.00	\$35.00	\$40.00
Eastman View No. 2 Complete Outfit*	45.00	55.00	63.00	68.00
Complete Outfit as above, but with Rapid Rectigraphic instead of Symmetrical Lens	56.00	67.00	77.00	82.00
Extra Carrying Case	5.00	5.50	6.00	7.00
Extra Lens Board	.60	.75	.75	1.25

*Eastman View No. 2 Complete Outfit includes: Eastman View No. 2 Camera, Symmetrical Lens, Double Valve Auto. Shutter, six Film or Plate Holders, Combination Tripod, Focusing Cloth, and Case to hold complete outfit. See illustration similar outfit, page 29.

PREMO FILM PACK TANK



FOR the amateur who wishes to do his own work, the difficulties and uncertainties of development are entirely removed by the Premo Film Pack Tank. Absolutely no experience or technical skill is required to get perfectly developed negatives. The tank method of development is automatic and scientifically exact. If instructions are followed, with the tank, one with no photographic knowledge whatever can get as perfectly developed negatives from every film as could an expert by any method.

The Premo Film Pack Tank consists of two pieces—a metal receiver or cage for the films, and a tank with cover for the developing fluid. The entire outfit is self-contained and can be easily carried in a corner of a suitcase.

The cage is divided into twelve compartments—in the 5 x 7 size, six—each accommodating one film. As the film is taken from the pack, it is held between the thumb and fingers, slightly bent from top to bottom, and slipped into its respective compartment. When all the compartments are filled, the cage is placed in the tank, which has been previously filled with developer, the top replaced and the films left to develop for a certain specified time. No further attention is necessary

PREMO FILM PACK TANK

except to turn the tank end for end several times during the progress of development.

At the expiration of the full time, open the tank, take out the cage, remove films, place them in a tray of water for a moment, then transfer to the fixing bath. Development is completed. Rinse out cage and tank and set them aside.

The operation of removing films from the pack and loading the cage is done, of course, in a darkened room by the light of a ruby lamp. During the day any darkened closet will suffice; at night any dark room in which the shades are drawn will answer. To load the films in cage will take only two or three minutes, and as soon as the top is placed on tank it may be brought out into any light and left until development is completed. Night is really an ideal time to develop films as they can be fixed and washed in a short time and will dry over night, being all ready to print from in the morning.

If it is desired to develop less than a dozen films, one merely removes from his pack as many films as have been exposed, places them in the cage, and proceeds in the same manner as described above.

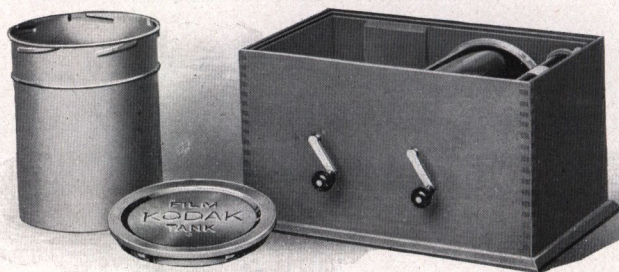
The cage of the No. 1 Tank is slightly different from that shown in the illustration, but the method of loading is the same and, of course, the results are just as dependable in every respect.

Particular attention is called to the necessity of using Premo Tank developing powders for normal development in Premo Film Pack Tanks. If Kodak Tank powders are used a longer time for development must be given. Follow closely the instructions which come with every film pack.

PRICES

Premo Film Pack Tank No. 1 for 12 $1\frac{3}{4} \times 2\frac{3}{8}$ or $2\frac{1}{4} \times 3\frac{1}{4}$ films	\$ 1.50
Ditto No. 2 for 12 $2\frac{1}{2} \times 4\frac{1}{4}$, $3\frac{1}{4} \times 4\frac{1}{4}$, $3 \times 5\frac{1}{4}$, $3\frac{1}{4} \times 5\frac{1}{2}$ or 4 x 5 films	4.00
Ditto, No. 3 for 6 5×7 films	4.50
Premo Tank Developing Powders, in packages of 6, No. 1	.20
Premo Tank Developing Powders, in packages of 6, No. 2	.25
Premo Tank Developing Powders, in packages of 6, No. 3,	.35
Kodak Acid Fixing Powder, per 1 pound package	.25
Ditto, per $\frac{1}{2}$ pound package	.15
Ditto, per $\frac{1}{4}$ pound package	.10

KODAK FILM TANK



THE Kodak Film Tank not only develops roll film automatically but it does it in broad daylight, eliminating the necessity for a dark room during any part of the photographic process.

This tank consists of a winding box, a light-proof apron, and a heavily nickeled brass solution cup with cover. In the Brownie Film Tank, however, no cover is necessary as the film roll itself is turned. All articles can be packed in the box, making the entire outfit self-contained.

The film to be developed is placed upon a reel in the winding box, the cover is placed on the box and the film is wound around an axis in combination with the apron, in such fashion that, when completely wound, the apron protects the film effectually from light, and may be removed from the winding box safely at any time. It is then lowered into the cup of developer, the cover attached and the film left to develop for twenty minutes. After development the film is removed for fixing.

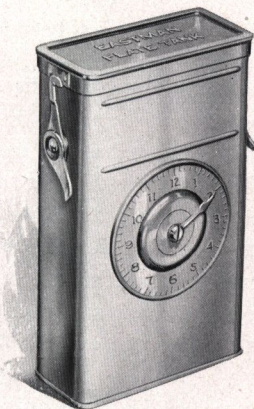
PRICES

Brownie Kodak Film Tank, for use with No. 2 and No. 2 Folding Cartridge Premo cartridges, complete	\$ 2.75
Cover for same	.25
2½-inch Kodak Film Tank, for use with all cartridges having a film width of 2½ inches or less, complete	4.00
3½-inch Kodak Film Tank, for use with all Kodak and Brownie cartridges having a film width of 3½ inches or less, complete	5.50
Flexible Rubber Tray, for 3½-inch Kodak Film Tank	1.40
Kodak Tank Developer Powders for Brownie Kodak Film Tank, per package, ½ dozen	.15
Ditto, for 2½-inch tank, per package, ½ dozen	.20
Ditto, for 3½-inch tank, per package, ½ dozen	.20

EASTMAN PLATE TANK

IN the Eastman Plate Tank, plates may be developed in the same manner and with the same assurance of excellent results as may films developed in the Premo Film Pack Tank. The theory of construction is precisely the same, with of course such differences as are necessary because of the physical differences between films and plates.

It consists of a metal solution cup, a cage for holding twelve (or less) plates and a loading fixture for loading plates into the cage. In the $3\frac{1}{4} \times 4\frac{1}{4}$, $3\frac{1}{4} \times 5\frac{1}{2}$ and 4×5 sizes, the cage of plates may be developed in a Premo Film Pack Tank, so that one using a Premo that takes films or plates and having a Premo Film Pack Tank needs only to purchase the cage and loading fixture of the plate tank for the development of his plates, an advantage in economy.



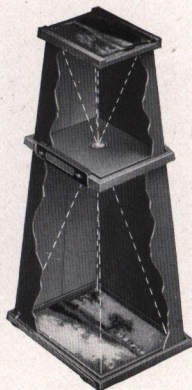
It is thus apparent that the owner of a Premo plate camera can not only use films or plates in his camera with equal facility, but he can also avail himself of the advantages of tank development with either medium. The tank is heavily nicked and will last indefinitely.

PRICES

Eastman Plate Tank for 4×5 , $3\frac{1}{4} \times 5\frac{1}{2}$ or smaller plates, includes Solution Cup, Plate Cage, Loading Fixture and Adjustable Kit	\$ 4.00
Ditto, 5×7 , without Kit	5.00
Ditto, 8×10 , with Adjustable Kit	12.00
Adjustable Kit for 4×5 or $3\frac{1}{4} \times 5\frac{1}{2}$ Tank, to take smaller plates	.50
Kits for 5×7 Tank, to take $3\frac{1}{4} \times 5\frac{1}{2}$, $4\frac{1}{4} \times 6\frac{1}{2}$ or $4\frac{3}{4} \times 6\frac{1}{2}$ plates, each	.75
Extra Adjustable Kit for 8×10 Plate Tank	1.00
Plate Cage and Loading Fixture for 4×5 and $3\frac{1}{4} \times 5\frac{1}{2}$ plates (can be used in a 4×5 Premo Film Pack Tank)	1.10
Eastman Plate Tank Powders, for 4×5 Tank, per package $\frac{1}{2}$ doz.	.20
Ditto, for 5×7 Tank, per package $\frac{1}{2}$ dozen	.35
Ditto, for 8×10 Tank, per package, $\frac{1}{2}$ dozen	.50
Kodak Acid Fixing Powder, per 1-pound package	.25
Ditto, per $\frac{1}{2}$ -pound package	.15
Ditto, per $\frac{1}{4}$ -pound package	.10

BROWNIE ENLARGING CAMERA

WITH one of these cameras it's just as easy to make first-class enlargements as it is to print on Velox paper. In fact, the two processes are very much the same excepting that, in ordinary printing, the negative and paper are in contact, while in enlarging, the paper is at some distance from the negative, with a lens in between. The Improved Brownie Enlarging Camera consists of a light-tight cone with attachments to hold a negative at the small end, and a sheet of Bromide or Velox paper at the other. All, but the No. 2 Post Card which is in one section, are collapsible and made in two sections, the lens support holding them firmly together when in use. Exposures may be made to the sky or with the Brownie Illuminator specially designed for electric illumination of these Enlarging Cameras.



No. 2 Brownie Post Card Enlarging Camera for post card ($3\frac{1}{4} \times 5\frac{1}{2}$) enlargements from $2\frac{1}{4} \times 3\frac{1}{4}$ negatives	\$ 2.00
No. 2 Brownie Enlarging Camera, for 5×7 enlargements from $2\frac{1}{4} \times 3\frac{1}{4}$ negatives	2.50
No. 3 Ditto, for $6\frac{1}{2} \times 8\frac{1}{2}$ enlargements from $3\frac{1}{4} \times 4\frac{1}{4}$ negatives	3.50
No. 4 Ditto, for 8×10 enlargements from 4×5 negatives or $6\frac{1}{8} \times 9\frac{1}{4}$ enlargements from $3\frac{1}{4} \times 5\frac{1}{2}$ negatives	4.00
Brownie Illuminator	3.00

VELOX TRANSPARENT WATER COLOR STAMPS

ANYONE can make beautifully colored prints by the use of Velox Transparent Water Color Stamps.

No special artistic skill, no knowledge of painting whatever is necessary. Just a brush or two and the book of stamps, which includes simple directions for coloring both prints and lantern slides.

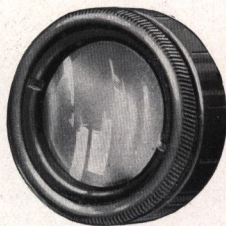
Each book includes twelve sheets of colors and each sheet is divided by perforations into twenty-two stamps. To use any color merely tear off a stamp, place in a small saucer or palette supplied with the outfit, and cover with about a teaspoonful of water.

Velox Transparent Water Color Stamps, complete booklet, 12 colors	\$ 0.25
Separate Color Leaves, two sheets	.05
Set of 3 Special Brushes, per set	.50
Mixing Palette	.25
Velox Transparent Water Color Stamp Outfit, including book, three brushes and palette	.75

PREMO ACCESSORIES

KODAK PORTRAIT ATTACHMENT

This is simply an extra lens which fits on in front of the regular lens and in no way affects the operation of the camera, excepting to so change the focus as to permit working close to the subject, thereby giving good sized head and shoulder portraits. Order by number.



- | | |
|--|---------|
| No. 0. For Premo Jrs. Nos 1 and 1A and Cartridge Premos Nos. 2 and 2A | \$ 0.50 |
| No. 3. For Premoette Jr. No. 1A, both single and double lens; Premoette Jrs. Nos. 1 and 1A, <i>f.</i> 7.7; $2\frac{1}{2} \times 4\frac{1}{4}$ and $3\frac{1}{4} \times 4\frac{1}{4}$ Premoette Sr., both R. R. and <i>f.</i> 7.7 lens; Premos Jrs. Nos. 3 and 4, No. 2A Folding Cartridge Premo with single or R. R. lens, Premo No. 12, <i>f.</i> 7.7 | .50 |
| No. 4. For No. 2C Cartridge Premo (Box Style) | .50 |
| No. 5. For all 4×5 , 3A and 5×7 Premos Nos. 8, 9 and 10; 3A Premoette Sr., R. R. lens; Nos. 2C and 3A Folding Cartridge Premos, both single and double lenses | .50 |
| No. 6. For Premoette Jr. No. 1A Special and Premo No. 12, <i>f.</i> 6.3, Premo No. 12 with Kodak Anastigmat lens, <i>f.</i> 6.3, and all B. & L. Anastigmats | .50 |
| No. 7. For $3\frac{1}{4} \times 5\frac{1}{2}$ Premoette Sr. <i>f.</i> 7.7 and 3A and 4×5 Premos No. 9 when fitted with <i>f.</i> 7.7 lens | .50 |
| No. 8. For Premoette Jr. No. 1, both single and double lens, No. 1 Special, No. 2 Folding Cartridge Premo with single or R. R. lens and Premo No. 12, with R. R. lens | .50 |

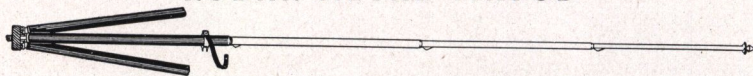
KODAK SKY AND COLOR FILTERS

The Kodak Sky Filter is designed to equalize the great difference in light between sky and foreground in landscape photography. Therefore only the upper half of the sky filter is stained yellow, the lower half being colorless. The Kodak Color Filter is stained throughout and is for use for all subjects, such as flowers for instance, embracing colors which act weakly on the sensitive films. Specify which is wanted.

- | | |
|--|---------|
| No. 0. For Premo Jrs. Nos. 1 and 1A and Cartridge Premos Nos. 2 and 2A | \$ 0.50 |
| No. 3. For Premoette Jr. No. 1A, both single and double lens; Premoette Jrs. Nos. 1 and 1A, <i>f.</i> 7.7; $2\frac{1}{2} \times 4\frac{1}{4}$ and $3\frac{1}{4} \times 4\frac{1}{4}$ Premoette Sr., both R. R. and <i>f.</i> 7.7 lens; Premos Jrs. Nos. 3 and 4, No. 2A Folding Cartridge Premo with single or R. R. lens, Premo No. 12, <i>f.</i> 7.7 | .75 |
| No. 4. For No. 2C Cartridge Premo (Box Style) | .75 |
| No. 5. For all 4×5 , 3A and 5×7 Premos Nos. 8, 9 and 10; 3A Premoette Sr., R. R. lens; Nos. 2C and 3A Folding Cartridge Premos, both single and double lenses | 1.00 |
| No. 6. For Premoette Jr. No. 1A Special and Premo No. 12, <i>f.</i> 6.3, Premo No. 12 with Kodak Anastigmat lens, <i>f.</i> 6.3, and all B. & L. Anastigmats | .75 |
| No. 7. For $3\frac{1}{4} \times 5\frac{1}{2}$ Premoette Sr. <i>f.</i> 7.7 and 3A and 4×5 Premos No. 9 when fitted with <i>f.</i> 7.7 lens | 1.00 |
| No. 8. For Premoette Jr. No. 1, both single and double lens, No. 1 Special, No. 2 Folding Cartridge Premo with single or R. R. lens and Premo No. 12 with R. R. lens | .50 |

PREMO ACCESSORIES

KODAK METAL TRIPOD



Combining light weight and compactness with exceptional rigidity, this is an ideal tripod for cameras up to 5 x 7.

Has telescoping legs of brass tubing—lower sections nickered, the upper black enameled—should a part become inoperative through wear or accident, any section may be removed for repairs. This is a unique feature among metal tripods.

When extended each section catches and holds firmly. To close, it is necessary to press in top catch only, the others then releasing automatically.

The Nos. 1 and 2 have revolving heads for attaching to camera. With this construction the camera may be swung, so as to take in the desired view without moving the tripod, a distinct advantage over other types of metal tripods. The Nos. 1 and 2 also have straps for holding the legs in place when closed. The No. 6 has folding head and folds into such a compact flat package that it can easily and conveniently be carried in the pocket.

	Sections.	Closed	Length Extended.	Weight.	Price.
Kodak Metal Tripod No. 0	3	15½ in.	39½ in.	15 ozs.	\$ 2.75
Kodak Metal Tripod No. 1	4	15 in.	48½ in.	21½ ozs.	4.00
Kodak Metal Tripod No. 1C	4	15½ in.	48½ in.	25½ ozs.	3.75
Kodak Metal Tripod No. 2	5	13½ in.	49½ in.	25 ozs.	4.50
Kodak Metal Tripod No. 2C	5	13½ in.	49½ in.	26 ozs.	4.25
Kodak Metal Tripod No. 6	6	11¾ in.	40 in.	24 ozs.	6.50
Leatherette Case for No. 0 or No. 1					.75
Leather Carrying Case for any style					2.25
Rubber tips for use indoors, for any size, per set of three					.10

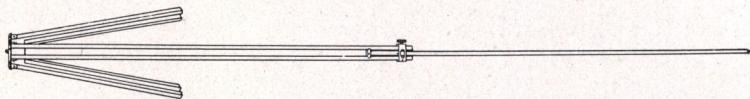
FLEXO TRIPOD



For cameras up to and including the 5 x 7 size this is a very satisfactory tripod at small expense. Only clear, straight grained spruce is used in its construction.

Price, \$1.00

BULL'S-EYE TRIPOD

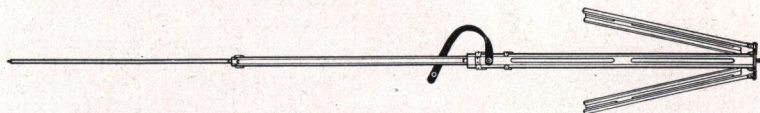


Two sections. Aluminum revolving head. Made of maple with brass fittings. For 4 x 5 cameras, or smaller. Length, extended, 42½ inches; folded, 24 inches. The only two-section tripod that will go into a suitcase.

Price, \$1.50

PREMO ACCESSORIES

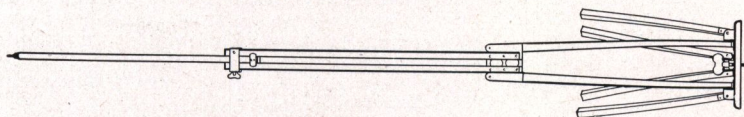
STANDARD TRIPOD



The feature of this tripod is the automatic locking of the sections when they are extended. Light, compact and rigid. Fixed, non-detachable head. Length, folded, 21 inches; extended 53½ inches. Weight, 18 ounces. Cherry finish, brass trimmings.

Price, \$2.00

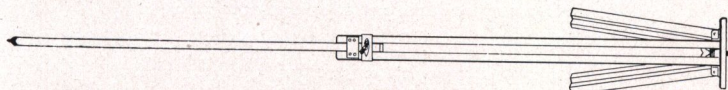
COMBINATION TRIPOD



This tripod is made on the sliding and folding principle. The wood parts are of ash and the finish is of the very best.

Style.	Size of Camera.	Weight.	Price.
No. 2½	6½ x 8½ and smaller	3 lbs.	\$3.00
No. 3	8 x 10 and 10 x 12	4 lbs.	3.50
No. 4	11 x 14 and 14 x 17	5 lbs.	4.50
No. 5	17 x 20 and 20 x 24	8 lbs.	6.00

SLIDING TRIPOD



A perfectly rigid tripod for the heaviest cameras. The No. 1 and No. 2 are made of spruce, the No. 3 and No. 4 of ash.

Style.	Size of Camera.	Weight.	Price.
No. 1	5 x 7 and smaller	2 lbs.	\$2.00
No. 2	5 x 8 and 6½ x 8½	2 lbs. 8 ozs.	2.50
No. 3	8 x 10 and 10 x 12	4 lbs. 8 ozs.	3.00
No. 4	11 x 14 and 14 x 17	6 lbs. 8 ozs.	4.00

EASTMAN TRIPOD BRACE

An exceedingly simple device for holding the tripod legs in position when extended. Cannot collapse.

Eastman Tripod Brace Price, \$1.25

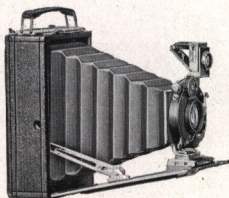
R. O. C. TRIPOD TRUCK

An excellent device for those who use a tripod indoors. Perfectly solid when extended, supplied with casters and folds compactly when not in use.

R. O. C. Tripod Truck	No. 1 for average tripods	\$1.00
	No. 2 for very heavy tripods	1.25

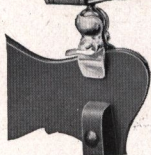
PREMO ACCESSORIES

THE UNIVERSAL CLAMP



The Universal Clamp is a small, convenient substitute for a tripod which may be attached to any camera. It can be carried readily in the pocket, is very light, and may be attached to a chair, fence, automobile or motorcycle handle bar. The clamp jaws are padded with felt.

Price \$.75



UNIVERSAL TRIPOD HEAD

This is made upon the same principle as the Universal Clamp described above, but in place of the clamp jaws, is provided with a solid head with socket which will accommodate any regular tripod screw. With this device the camera can be used on a tripod and tilted to any angle up to 90 degrees.

Price, \$.75

DEVELOPING TRAYS

Bulls-Eye, 3 1/4 x 4 1/4	\$.20	Bulls-Eye, 6 1/2 x 8 1/2	\$.75
Bulls-Eye, 4 x 5 or 4 x 625	Bulls-Eye, 8 x 10	1.00
Bulls-Eye, 5 x 745		

EASTMAN VISIBLE GRADUATE

This new moulded graduate, as its name implies may be easily read in the dark room under the rays of the ruby light.

The graduations are opaque and not translucent as is the case with most graduates.

2 ounce	\$.20	8 ounce	\$.40
4 ounce25	16 ounce60



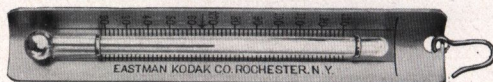
THERMOMETER STIRRING ROD



Two articles of great use to the amateur, combined in one. The rod is 1/4-inch in diameter and 9 inches long. One end is flattened for crushing purposes. The thermometer is carefully tested and is unusually accurate.

Price, \$.75

EASTMAN THERMOMETER



Especially suitable for determining the temperature in tank development. Made with curved back to fit inside of tank.

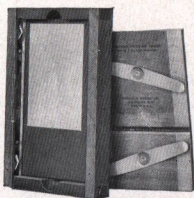
Price, \$.65

PREMO ACCESSORIES

PLATE HOLDER KITS

Size Outside.	Size of Opening for Plate.	Price.
4 x 5	3 1/4 x 4, 3 1/4 x 4 1/4	\$.20
5 x 7	3 1/4 x 4, 3 1/4 x 4 1/4, 3 1/4 x 5 1/2, 4 x 5, 4 1/4 x 6 1/2	.25
6 1/2 x 8 1/2	3 1/4 x 4 1/4, 4 x 5, 3 1/4 x 5 1/2, 4 1/4 x 6 1/2, 4 3/4 x 6 1/2, 5 x 7	.30
8 x 10	4 1/4 x 6 1/2, 4 3/4 x 6 1/2, 5 x 7, 6 1/2 x 8 1/2	.40
7 x 11	5 x 7	.40
11 x 14	6 1/2 x 8 1/2, 8 x 10, 10 x 12	.50
14 x 17	10 x 12, 11 x 14	.80

MASKIT PRINTING FRAME

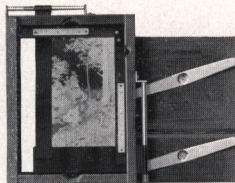


This frame is furnished with a series of paper masks, and a patented simple-working device on the inside of the frame holds mask, paper and negative firmly together, assuring uniform white margins and preventing all chance of slipping.

Kodak Maskit Printing Frame, 3 1/4 x 4 1/4, opens two-thirds	\$.40
Ditto, 3 1/4 x 5 1/2, opens two-thirds	.45
Ditto, 5 x 7, opens two-thirds	.50

AUTO-MASK PRINTING FRAME

An adaptation to a printing frame of the masking principle of the highly successful Kodak Amateur Printer. Will accommodate negatives of any size up to and including 4 x 5 and 3 1/4 x 5 1/2. It is a very simple matter to adjust the mask for uniform masking of any negative you care to use, a graduated scale attached to the stationary guide aiding in sizing and holding exact dimensions of the mask openings.



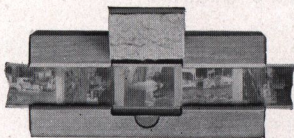
Kodak Auto-Mask Printing Frame, . . . \$1.00

EASTMAN PRINTING FRAME

Standard Printing Frames, strongly constructed of suitable material.

Eastman, for 2 1/4 x 3 1/4 plates or 1 1/8 x 2 1/2 or smaller films	\$.25
Eastman, 2 1/2 x 4 1/4, 3 1/4 x 4 1/4 or 4 x 5, opens two-thirds	.25
Eastman, 3 1/4 x 5 1/2, for films, opens two-thirds	.25
Ditto, for plates,	.25
Eastman, 5 x 7, opens two-thirds	.35

EASTMAN PRINTING FRAME NO. 00



These frames are designed for printing No. 00 Cartridge Films in the continuous strip, making it unnecessary to cut up these small size rolls, as the film slides through the frame from exposure to exposure. The Model A is provided with tension spring and is especially suitable for printing on Solio paper or from dense negatives,

on Velox, where long exposures are required. The Model B is for use with developing-out paper only, where average exposures are required, contact being maintained by pressure of the fingers as the frame is held up to the light. With no other type of frame can printing be handled so rapidly. The illustration shows the Model B.

Eastman Printing Frame No. 00, Model A, \$.25; Model B, \$.35

Kodak Serial

no 1 .35 no 12 .40

PREMO ACCESSORIES

KODALOID PRINTING MASKS

Transparent orange color masks for use with Maskit Printing Frames in sets of three each with different openings.

For $3\frac{1}{4} \times 4\frac{1}{4}$ frame, per set of three	\$.20
For $3\frac{1}{4} \times 5\frac{1}{2}$ frame, per set of three25
For 5×7 frame, per set of three30

Black Paper Masks, same sizes as above.

Price per set of three, any size	\$.10
--	--------



FLEXO PRINT ROLLER

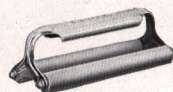
An inexpensive but very satisfactory roller for amateur use; has black enameled frame and a 4-inch rubber roller.

Price, \$.20 *VS*

KODAK PRINT ROLLER

The best roller ever made for general amateur use; has double rubber rollers, 2 x 6 inches, and nickeled frame.

Price, \$.50 *VS*



EASTMAN PHOTO PASTE

A solid, first quality white paste. Will not cockle nor discolor print or mount.

Jars.

4 ounce . . .	\$.10
8 ounce20

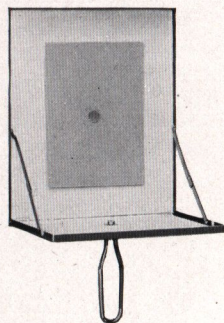
Tubes.

2 ounce . . .	\$.10
3 ounce15
5 ounce25

FLASH-LIGHT MATERIAL

The simplest and safest method of making flash-light pictures is by means of the Eastman Flash Sheets and Kodak Flash Sheet Holder. The sheets burn slowly, giving a broad, soft light, and not so startling the subject as to give a staring effect to the eyes.

The holder is a genuine innovation. A saw tooth holds the sheet in proper position and it is lighted from the back through an aperture provided in the center for the purpose. In this manner the holder is always between the operator and the flash sheet, and it may be held in the hand or supported on a tripod, a socket being provided for the latter purpose.



*No. 1 Flash Sheets, per package of $\frac{1}{2}$ dozen sheets, 3×4	\$.35
*No. 2 Flash Sheets, per package of $\frac{1}{2}$ dozen sheets, 4×5	.56
*No. 3 Flash Sheets, per package of $\frac{1}{2}$ dozen sheets, 5×7	.84
Kodak Flash Sheet Holder	1.00

*Prices subject to change without notice.

PREMO ACCESSORIES

VELOX PAPER AND SUNDRIES

Size.		No. 00	Single Weight.			Double Weight.		
			Doz.	½ Gross.	Gross.	Doz.	½ Gross.	Gross.
1 1/8 x 2 1/4	(For negatives)	.	\$.10	\$.60	\$1.00	\$.15	\$.75	\$1.25
2 1/4 x 3 1/4	.	.	.10	.60	1.00	.15	.75	1.25
2 1/2 x 4 1/4	.	.	.12	.70	1.25	.18	.90	1.55
3 1/4 x 4 1/4	.	.	.15	.80	1.50	.20	1.00	1.90
2 3/8 x 4 7/8	.	.	.15	.80	1.50	.20	1.00	1.90
3 3/4 x 5 1/2	.	.	.15	.80	1.50	.20	1.00	1.90
4 x 5	.	.	.20	1.10	2.00	.25	1.40	2.50
5 x 7	.	.	.35	2.00	3.50	.45	2.50	4.40
Velox Post Cards						.20	1.10	2.00
N. A. (Non-Abrasion) Velox Liquid Developer, 4-ounce bottle (makes 20 ozs. for Special, 12 ozs. for Regular)								
Ditto, 16-ounce bottle								.25
Nepera Solution, per 4-ounce bottle								.75
Ditto, per 16-ounce bottle								.28
Velox Re-developer for Sepia Tones, per 4-ounce bottle								.84
Ditto, 2 ounces (sufficient for 150 4 x 5 prints)								.50
Nepera M. Q. N. A. Tubes, box of 5 tubes								.30
Kodak N. A. M. Q. Developer, per package 3 tubes								.75
								.35

GLASS DRY PLATES

Seed, Standard or Stanley.

Size.	Price per Dozen.	Size.	Price per Dozen.	Size.	Price per Dozen.
2 1/4 x 3 1/4	\$.35	4 x 5	\$.65	5 x 8	\$1.25
3 1/4 x 4 1/4	.45	4 1/4 x 6 1/2	.90	6 1/2 x 8 1/2	1.65
3 3/4 x 5 1/2	.65	5 x 7	1.10	8 x 10	2.40

EASTMAN PORTRAIT FILM

Including three Eastman Safety Envelopes for storing.

Size.	Price per Dozen.	Size.	Price per Dozen.	Size.	Price per Dozen.
5 x 7	\$1.10	8 x 10	\$2.40	11 x 14	\$6.00
6 1/2 x 8 1/2	1.65	7 x 11	2.40		

DEVELOPING AND PRINTING OUTFITS

Eastman 3A Outfit includes every requisite for developing by the dark room method, printing and finishing twenty-four 3 1/4 x 5 1/2 or smaller pictures.

1 Kodak Candle Lamp, 25c; 1 Printing Frame, 25c; 1 Glass for Frame, 5c; 1 4-ounce Graduate, 15c; 1 Stirring Rod, 5c; 4 Developing Trays, 40c; 5 Tubes Eastman's Special Developer, 25c; 1/2 pound Kodak Acid Fixing Powder, 15c; 1 package Bromide Potassium, 10c; 2 dozen 3 1/4 x 5 1/2 Velox Paper, 30c; 2 ounces Nepera Solution, for developing Velox, 10c; Instruction Book. These articles if purchased separately would cost \$2.05. Price, complete, neatly packed, \$1.50.

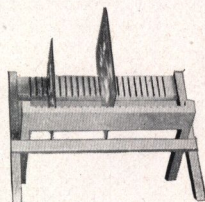
A B C Outfit, similar to above, but for 4 x 5 negatives, \$1.50.

PREMO NEGATIVE RACK

This rack accommodates negatives of all sizes. It folds flat when not in use.

No. 1, for 12 negatives
No. 2, for 24 negatives

\$ 20 25
25 35



PREMO ACCESSORIES

CARD MOUNTS

BALTIC

Buff, Brown or Grey.

Heavy stock, beveled edge, heavy borders—a beautiful rich mount.

For Prints.	Size Outside.	Per 50.	Per 100
2 1/4 x 3 1/4	4 3/8 x 5 3/8	\$.75	\$1.50
2 1/2 x 4 1/4	4 1/2 x 6 1/4	.85	1.65
3 1/4 x 4 1/4	5 1/8 x 6 1/8	.90	1.80
2 7/8 x 4 7/8	5 1/4 x 7 1/8	.95	1.90
3 1/4 x 5 1/2	5 3/8 x 8	1.10	2.20
4 x 5	6 x 7	1.20	2.40
5 x 7	8 x 10	1.75	3.50

RIVIERA

Ash Grey and White.

For Prints.	Size Outside.	Per 50.	Per 100
1 1/2 x 2	3 x 3 1/2	\$.40	\$.80
2 1/4 x 3 1/4	3 3/8 x 4 5/8	.50	1.00
2 1/2 x 4 1/4	4 1/8 x 5 3/8	.60	1.15
3 1/4 x 4 1/4	4 1/4 x 5 1/4	.60	1.15
2 7/8 x 4 7/8	4 1/2 x 6 1/2	.70	1.35
4 x 5	5 1/8 x 6 1/8	.80	1.55
3 1/4 x 5 1/2	5 x 7 1/4	.80	1.55
5 x 7	7 x 9	1.15	2.30

TRIUMPH

Made in Ash Grey and Aristo Brown.

For Prints.	Size Outside.	Per 100
5 x 7	8 x 10	\$ 3.50
6 1/2 x 8 1/2	10 x 12	4.70
8 x 10	12 x 14	6.35
7 x 11	11 x 15	7.00

ENLARGEMENT FOLDER

Made with White Insert - Olive Grey Cover.
Sepia Buff Insert - Brown Cover.

For Prints.	Size Outside	Per 1/2 Doz.
5 x 7	7 1/2 x 9 1/2	\$.66
6 1/2 x 8 1/2	8 3/4 x 10 3/4	.78
8 x 10	9 x 13	.90
	10 3/4 x 13	.96

INSLIP ENLARGEMENT MOUNT

Color, English Grey or Sepia-Buff.

For Prints.	Size Outside.	Price Per Dozen.
A 3 1/4 x 5 1/2	7 3/4 x 9 3/4	\$.65
B 3 7/8 x 5 1/2	8 1/8 x 9 3/4	.65
C 4 1/4 x 6 1/2	8 1/2 x 10 3/4	.65
D 5 x 7	9 3/8 x 11 3/8	.65

For Prints.	Size Outside.	Price Per Dozen.
E 5 x 8 1/2	9 5/8 x 13 1/4	\$.76
F 6 1/2 x 8 1/2	11 5/8 x 13 3/8	.84
G 6 x 10	10 5/8 x 14 5/8	.90
H 8 x 10	12 5/8 x 14 5/8	1.15

For Prints.	Size Outside.	Price Per Half Dozen.
J 10 x 12	15 1/4 x 17 1/4	\$1.15
K 7 x 12	12 x 17	.75

For Prints.	Size Outside.	Price Per Half Dozen.
L 8 x 14	14 1/4 x 20 1/4	\$.75
M 11 x 14	17 1/4 x 20 1/4	1.50

SUNDRIES

Cable Release	\$.25
Bulbs and Tubes, No. 225
Bulbs and Tubes, No. 335
Film Clips, Kodak Jr. No. 112
Film Clips, Kodak Jr. No. 225
Film Clip, Eastman, 3 1/2 inch, per pair25
Focus Cloth, Rubber60
Ground Glass:	
4 x 520
5 x 725
6 1/2 x 8 1/235
8 x 1040
Reversible Backs:	
For View Cameras, 5 x 7	8.00
Ditto, 6 1/2 x 8 1/2	9.00
Ditto, 8 x 10 or 7 x 11	10.00
Premo View Finder	1.50
Screws for Tripod Head:	
Nos. 1, 2 and 315
Nos. 4 and 525

Screws for Tripod Leg:	
Nos. 1, 2 and 3	\$.10
Nos. 4 and 515
Milled Head Screws for Cameras:	
1/2 inch and smaller10
Larger than 1/2 inch15
Stirring Rod, Hard Rubber20
Shoulder Straps, Black:	
1/2 x 52 inch with Snaps and Buckles60
5/8 x 52 inch with Snaps and Buckles75
1/2 x 66 inch, with Buckle60
5/8 x 74 inch, with Buckle75
Tan Straps for View Cases with Buckle. Specify style and size of camera when ordering:	
34, 40 and 44 inches60
52, 60 and 66 inches75
Tubing, per foot06

Film clips 5" 1/4 .40

TESTED CHEMICALS

Eastman Chemical Outfit, consists of No. 2 and Special Developer, Intensifier, Reducer and Velox Re-developer	\$.30
Eastman Special Developer Powders, per package, 5 in sealed glass tubes	.25
Eastman Hydrochinon Developer Powders, per dozen	.50
Ditto, per $\frac{1}{2}$ dozen	.25
Ditto, per package 5 powders, in sealed glass tubes	.25
Eastman Pyro Developer Powders, per dozen	.50
Ditto, per $\frac{1}{2}$ dozen	.25
Ditto, per package 5 powders, in sealed glass tubes	.25
Tozol, per 1-ounce bottle	.85
Hydrochinon, per 1-ounce can	.29
Eastman Permanent Crystal Pyro, per 1-ounce bottle	.40
Velox, Re-developer Tubes, package of 12 tubes	.60
Hypo Sulphite of Soda, granular, per pound	.08
Alum, powdered, per pound	.20
Kodak Acid Fixing Powder, per pound package	.25
Ditto, per $\frac{1}{2}$ -pound package	.15
Ditto, per $\frac{1}{4}$ -pound package	.10
Eastman Intensifier, glass tube, per tube	.15
Eastman Reducer, per box of 5 tubes	.25
Eastman Opaque No. 1, per tube	.15
Potassium Bromide, per ounce	.15
Acetic Acid, 28 per cent., per 1-pound bottle	.27
Citric Acid, 4-ounce bottle	.43
Eastman Tested Carbonate of Soda (desiccated), per 1-pound bottle	.22
Eastman Tested Sulphite of Soda (desiccated), per 1-pound bottle	.33

These prices subject to change without notice.

BAUSCH & LOMB PROTAR LENS—SERIES V. F. 18

Designed for extreme wide-angle work, this lens embraces a field of 110 degrees.

No.	Size.	Equivalent Focus.	Price.	No.	Size.	Equivalent Focus.	Price.
1	4 $\frac{1}{4}$ x 6 $\frac{1}{2}$	3 $\frac{3}{8}$ in.	\$20.00	3	6 $\frac{1}{2}$ x 8 $\frac{1}{2}$	5 $\frac{3}{8}$ in.	\$25.00
2	5 x 7	4 $\frac{1}{8}$ in.	20.00	4	8 x 10	7 $\frac{3}{8}$ in.	31.00

SYMMETRICAL WIDE-ANGLE LENS

Has an angle of about 80 degrees and is furnished in cells to interchange with the various lenses supplied on Premo Cameras.

No.	Size.	Equivalent Focus.	Price in Cells Only.	No.	Size.	Equivalent Focus.	Price in Cells Only.
1	4 x 5	3 $\frac{1}{2}$ in.	\$ 5.00	3	6 $\frac{1}{2}$ x 8 $\frac{1}{2}$	6 $\frac{1}{2}$ in.	\$12.00
2	5 x 7	5 in.	7.50	4	8 x 10	8 in.	15.00

TERMS

The prices in this catalogue are strictly net, except to regular dealers who carry our goods in stock. *These prices owing to unsettled conditions are however subject to change without notice.* For the convenience of our customers we recommend that they make their purchases from a dealer in photographic goods, as by so doing they can save both time and transportation charges.

ROCHESTER OPTICAL DIVISION,

EASTMAN KODAK CO.,

ROCHESTER, N. Y.



O. H. PECK COMPANY
EASTMAN KODAK COMPANY
112-114-116 FIFTH STREET SOUTH
MINNEAPOLIS, MINN.

REVISED PRICE LIST

ON PREMOS etc.

**This Price List effective
Nov. 1, 1917, and revokes
all Price Lists previously
issued.**

Premo Junior No. 1	\$2.50 ✓
Premo Junior No. 1A	3.50 ✓
Premo Junior No. 3	4.50 ✓
Premoette Jr. No. 1.....	6.00 ✓
Do., with Planatograph lens....	8.00 ✓
Do., with Kodak Anastigmat lens, f.7.7	13.00 ✓
Premoette Sr., 2½x4¼, Kodak B.B. Shutter, Rapid Rectilinear lens	12.00 ✓
Do., 3¼x4¼	12.00 ✓
Do., 3¼x5½	15.00 ✓
Do., with Kodak Anastigmat, f.7.7 lens, 2½x4¼	17.00 ✓
Do., 3¼x4¼	17.00 ✓
Do., 3¼x5½	20.00 ✓
Cartridge Premo No. 00.....	1.00 ✓
Cartridge Premo No. 2.....	2.50 ✓
Cartridge Premo No. 2A.....	3.50 ✓
Cartridge Premo No. 2C.....	4.50 ✓
Folding Cartridge Premo No. 2.	6.50 ✓
Do., with Rapid Rectilinear lens	8.00 ✓
Folding Cartridge Premo No. 2A	8.00 ✓
Do., with Rapid Rectilinear lens	10.00 ✓
Folding Cartridge Premo No. 2C	10.00 ✓
Do., with Rapid Rectilinear lens	12.00 ✓

Folding Cartridge Premo No. 3A	11.00 ✓
Do., with Rapid Rectilinear lens	13.00 ✓
Premo No. 8, 4x5.....	17.50 ✓
Do., 3¼x5½	18.50 ✓
Do., 5x7	22.50 ✓
Do., with Kodak Anastigmat f.7.7 lens, 3¼x5½	23.50 ✓
Premo No. 12	18.00 ✓
Do., with Kodak Anastigmat lens, f.7.7	23.00 ✓
Do., with Compound Shutter and Bausch & Lomb Kodak Ana- stigmat lens, f.6.3	38.00 ✓
Do., with Optimo Shutter and Bausch & Lomb Kodak Ana- stigmat lens, f.6.3	48.00 ✓
Do., with Bausch & Lomb Spe- cial Anastigmat lens, f.6.3....	39.00 —
Do., with Kodak Anastigmat lens, f.6.3	43.00 ✓
Do., with Bausch & Lomb Tessar Series II b. lens f.6.3.....	57.00 ✓
Do., with Bausch & Lomb Tessar Series Ic lens, f.4.5.....	59.00 ✓
Premo No. 9, 3¼x5½	35.00 ✓
Do., 4x5	35.00 ✓
Do., 5x7	40.00 ✓
Do., with Kodak Anastigmat f.7.7 lens 3¼x5½	40.00 ✓
Do., 4x5	40.00 ✓
Do., with Kodak Anastigmat lens, f.6.3 and Optimo Shut- ter, 3¼x5½	63.00 ✓
Do., 4x5	63.00 ✓
Do., with Bausch & Lomb Ko- dak Anastigmat lens, f.6.3 and Optimo Shutter, 3¼x5½.....	69.50 ✓
Do., 4x5	69.50 ✓
Do., 5x7	88.50 ✓
Premo No. 10, 5x7.....	75.00 ✓
Do., with Bausch & Lomb Kodak Anastigmat lens, f.6.3, and Op- timo Shutter	124.00 ✓
Do., with Bausch & Lomb Protar Series VIIa lens and Optimo Shutter	156.00 ✓

R. O. C. View Camera, 5x7.....	17.50
Do., 6½x8½	20.00
Do., 8x10	22.50
R. O. C. View Outfit, 5x7.....	35.00
Do., 6½x8½	45.00
Do., 8x10	53.00
Empire State View Improved 11x14	60.00
Eastman View Camera No. 1, 5x7	28.00
Do., 6½x8½	30.00
Do., 8x10	32.00
Eastman View No. 1 Outfit, 5x7.	45.00
Do., 6½x8½	54.00
Do., 8x10	62.00
Do., with Rapid Rectigraphic instead of Symmetrical lens, 5x7	56.00
Do., 6½x8½	66.00
Do., 8x10	76.00
Eastman View Camera No. 2, 5x7	35.00
Do., 6½x8½	38.00
Do., 8x10	40.00
Do., 7x11	45.00
Eastman View Camera No. 2 Outfit, 5x7	52.00
Do., 6½x8½	62.00
Do., 8x10	70.00
Do., 7x11	75.00
Do., with Rapid Rectigraphic in- stead of Symmetrical lens, 5x7	63.00
Do., 6½x8½	74.00
Do., 8x10	84.00
Do., 7x11	89.00

PREMO PLATE HOLDERS

3¼x4¼	\$1.25 ✓
3¼x5½	1.25 ✓
4x5	1.25 ✓
5x7	1.50 ✓

EASTMAN VIEW PLATE HOLDERS

5x7	\$1.50 ✓
6½x8½	1.60 ✓
7x11	1.75 ✓
8x10	1.75 ✓

UNIVERSAL PLATE HOLDERS

5x7	\$1.50
6 1/2 x 8 1/2	1.60 ✓
8x10	1.75

R. O. C. PLATE HOLDERS

5x7	\$1.25
6 1/2 x 8 1/2	1.35 ✓
8x10	1.50

EASTMAN PORTRAIT FILM HOLDERS

5x7	\$1.25
6 1/2 x 8 1/2	1.35
7x11	1.50 ✓
8x10	1.50

PREMO CARRING CASES

For Premo Jr. No. 1.....	\$1.00
Do., No. 1A	1.00
Do., No. 3	1.25 ✓
Sole Leather Carrying Case, with strap, for Premoette Sr. No. 1A	2.75 ✓
Do., for Premoette Sr. No. 3....	2.75 ✓
Do., for Premoette Sr. No. 3A...	3.50 ✓
Carrying Case with Shoulder Strap for No. 2 Cartridge Premo	1.10 ✓
Do., for No. 2C Cartridge Premo	1.35 ✓
Do., for No. 3A Folding Car- tridge Premo	1.35 ✓
<i>Leath. Leather #9 Premo 4 1/2 x 8 1/2</i>	<i>3.00 ✓</i>
<i>Do - 8 for 4 Pl. holders 5 1/2 x 7 1/2</i>	<i>3.50 ✓</i>

O. H. PECK COMPANY

EASTMAN KODAK COMPANY

112-114-116 So. Fifth Street

MINNEAPOLIS, MINN.