

# JAMES A. SINCLAIR

—AND CO., LTD.,

54, HAYMARKET,

LONDON, S.W.

*Telegrams: "Oraculum, London."*

*Telephone: 8788, Central.*

Contractors to - -

His Majesty's Government.

MANUFACTURERS OF HIGH-CLASS

**Optical and**  
**Photographic Instruments**

**Apparatus and Materials**

By all the Leading Makers.

WHOLESALE, RETAIL AND EXPORT.



## SPECIAL NOTICE

Goods advertised by any Manufacturer or Dealer may be ordered from us at list prices. In the case of High-class Cameras and other Apparatus, we test before forwarding, and customers therefore have an extra guarantee that the goods are equal to makers' specification.

JAMES A. SINCLAIR & Co., Ltd., 54, Haymarket,  
LONDON, S.W.

NOW READY.

# JAMES A. SINCLAIR'S PHOTOGRAPHIC AND OPTICAL GUIDE.

POST-FREE,  
SIXPENCE.

This interesting volume is an illustrated catalogue of the finest Photographic Apparatus and Materials, prefaced by a series of articles on photographic work by the best workers. There are in addition a number of useful formulæ for developing, printing and enlarging.

The Frontispiece is a charming **Photogravure of "Water Carriers at Toledo,"** by JAMES A. SINCLAIR, F.R.P.S., and the articles include:—

**Hand Cameras: Their Selection and Use.** By JAS. A. SINCLAIR, F.R.P.S. Mr. Sinclair has on three occasions received the medal of the Royal Photographic Society for enlargements made from hand-camera negatives. He is a great believer in the possibilities of hand-camera work, and endeavours to advise workers regarding the proper selection of an instrument and how to use it to the best advantage.

**The Camera at Home.** By E. T. HOLDING. Illustrated. Mr. Holding's pictorial works at the Royal Photographic Society's and Salon Exhibitions all come within the province of this article. In it he helps the beginner over many of the difficulties which confront him.

**The Art of Intensifying and Reducing Negatives.** By J. MCINTOSH (Secretary of the Royal Photographic Society). This article describes the various methods of intensification and reduction, and the reasons for their use. The best formulæ in each case are given. It will appeal to the expert as well as to the tyro.

**Bromide Printing and Developing.** By J. STERRY. An exceedingly useful article for those doing Bromide Printing and Enlarging. Written by the leading authority on Bromide work. What class of paper to use with different negatives. Hints on the illuminant. How to expose. Defects and their prevention. How to alter the gradation.

**The Gum Bichromatic Process.** By J. C. S. MUMMERY, A.R.I.B.A., F.R.P.S. Mr. Mummery's pictures in this process have won unstinted admiration. He gives a *resumé* of his practice, the paper to use, how to coat, dry and print it; the method of development.

**Carbon Printing.** By HENRY W. BENNETT, F.R.P.S. Mr. Bennett is recognised as a master of this process, and by his improved means of sensitizing the tissue has probably done more than anyone else to bring it within reach of the amateur. By following the instructions in Mr. Bennett's article success is certain.

**Law for Photographers.** By E. B. V. CHRISTIAN, LL.B. No one can read the answers to correspondents in the photographic journals without noticing what a large number of the inquiries relate to the Copyright Law. Mr. Christian in this article clearly and briefly tells photographers how the law is at present interpreted.

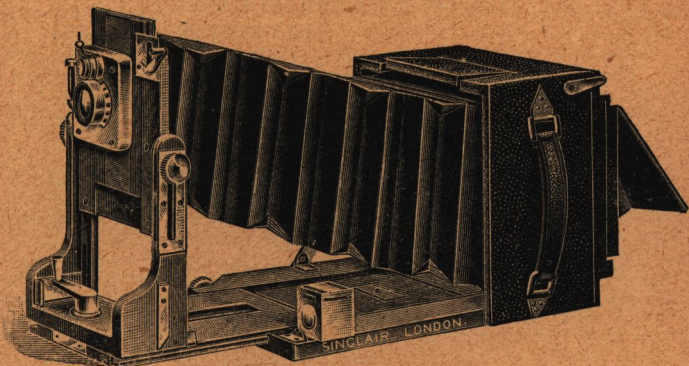
**General Photographic Hints, Formulæ, etc.**

JAMES A. SINCLAIR & Co., Ltd., 54, Haymarket, LONDON, S.W.



# The SINCLAIR “UNA” CAMERA.

THE ONLY PERFECT UNIVERSAL CAMERA.



Showing Camera with Long Extension and the Double Rising Front.

**The Sinclair “UNA” Camera is THE BEST  
of its Class,**

**BECAUSE—**

- IT** is suitable for every class of work.
- IT** will take short, medium, or long-focus lenses.
- IT** may be fitted with any shutter.
- IT** has great latitude in all movements.
- IT** is made of the finest Spanish Mahogany.
- IT** is covered with the best Morocco Leather.
- IT** is constructed on practical and scientific lines.
- IT** has a very great rising front.
- IT** is simple in construction and use.
- IT** is suitable for Telephoto work.
- IT** can be fitted with any Changing Arrangement, Dark Slides, Changing Box, Eastman Roll Holder or Premo Film Pack,

**JAMES A. SINCLAIR & Co., Ltd., 54, Haymarket,  
London, S.W.**

## The Sinclair "UNA" Camera—*continued.*

### A Peerless Camera for Hand or Stand.

IDEAL IN WORKMANSHIP.

SIMPLE IN CONSTRUCTION.

EFFICIENT IN USE.

**The Sinclair "UNA" Camera** is the best combined Hand and Stand Camera, providing every facility for practical work. It has none of those useless movements which make so many instruments only entertaining puzzles.

**The Sinclair "UNA" Camera** is a perfect instrument of a popular and well-known type, and is the outcome of many years' use and intimate acquaintance with all the leading makes of hand and stand cameras.

**The Sinclair "UNA" Camera** is the ideal representative of its type and consequently the most efficient in use. Many cameras suffer in strength and rigidity and are increased in weight by the inclusion of some action which is rarely if ever required. We have set our faces against making an instrument which appeals to the Tyro in photography, but which the practical man knows is apt to break down or cause unnecessary trouble from the number and complexity of its parts.

**The Sinclair "UNA" Camera** is made of Selected Spanish Mahogany, properly dovetailed and clamped. It is French polished inside and covered with the finest morocco leather.

**The Sinclair "UNA" Camera** has double extension amply sufficient for the single combinations of the Zeiss Protar Lenses, which we strongly recommend for general use. The long extension makes this camera well adapted for work with Telephoto Lenses. The baseboard is fitted with diagonal rack focussing adjustment, and carries the front so that the lens is always exactly parallel with the surface of the photographic plate. Attached to the baseboard, on the left-hand side, and in such positions that they can all be seen at the same time, are the finder, level, and focussing scale. When extra focussing scales for the single combinations of the lens are required, they are attached to the right-hand side. The brass arm which maintains the baseboard at right angles to the body of the camera is clamped by a screw which runs through a metal plate to ensure absolute rigidity.

---

JAMES A. SINCLAIR & Co., Ltd., 54, Haymarket,  
London, S.W.



## The Sinclair "UNA" Camera—*continued.*

### The Sinclair "UNA" Camera for the Tripod Stand.

The Sinclair "Una" Camera is distinctly a Universal Camera. It is as well adapted for Tripod work as any purely Tripod Camera. The back being square enables the operator to take vertical or horizontal pictures without removing the camera from its support. Its great range of movement and adaptability to a battery of lenses (short or long-focus and telephoto), makes it suitable for every kind of photographic work, whether portrait, landscape, architecture or copying.

### The Sinclair "UNA" Camera for Long-Focus Lenses and Portrait Photography.

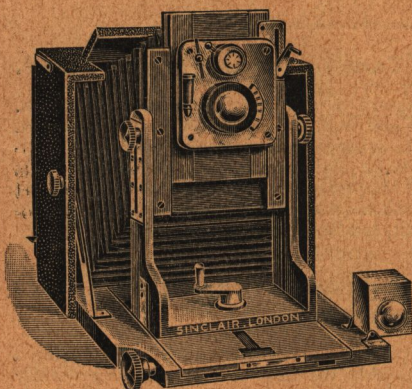
The Pictorial effect and pleasing perspective obtained by using a lens equal in focal length to double the base of the plate is generally recognised, and the "Una" Camera is particularly suited for this work. It has long extension, and what is equally important, is rigid when extended, consequently the single combinations of such lenses as the Zeiss convertible Protars can be used to their best advantage on the "Una" Camera. The long extension is also of great use when taking large portrait heads.

### The Sinclair "UNA" Camera for the Best Hand-Camera Work.

The construction of the "Una" Camera is of the utmost simplicity. Moreover, it is very compact, but we have not reduced its size at the expense of efficiency. The weight of the  $\frac{1}{2}$ -plate "Una" is not more than that of many well-known  $\frac{1}{4}$ -plate cameras. Every instrument being carefully and exactly scaled, it is particularly adapted for the best hand-camera work, and will answer the most exacting requirements of the Amateur or the Professional.

The "Una" Camera is a scientific instrument, and not a toy. Any form of diaphragmatic or focal plane shutter may be fitted, and almost any lens used. In cases where the photographer finds any difficulty in estimating distances, the camera may be held to the level of the eye and accurately focussed on the hooded ground glass without the necessity for a focussing cloth. The level, finder, and focussing scale are arranged so that they are easily seen, and where a ground-glass finder is used, it can be marked to show the effect of the rising front, at an extra cost of 5/6.

# The Sinclair "UNA" Camera—*continued.*



♣

A PERFECT  
CAMERA  
GIVING  
PERFECT  
PICTURES.



Showing Camera at its Normal Extension with Double Front in action.

**The Sinclair Double Rising Front** is a peculiar feature which we have designed to give the maximum of movement in a new and simple fashion, so that the wide angle covered by modern anastigmat lenses may be utilised, thus dispensing with the undesirable swing back. This great and important improvement enables the operator to photograph tall buildings without stopping down the lens to the same extent as when a swing back is used.

**The Sinclair Extending and Rising Front** is solidly made with a broad firm base, which may be instantaneously clamped to the baseboard in any desired position and with absolute rigidity—an important and, indeed, essential point generally lacking in instruments of somewhat similar design. By means of the double rising movement great range is secured, the amount of rise in the various sizes being as follows:—

$\frac{1}{4}$ -plate,  $2\frac{1}{2}$  inches.       $5 \times 4$ ,  $2\frac{5}{8}$  inches.       $\frac{1}{2}$ -plate,  $3\frac{3}{4}$  inches.

Moreover, not only is this rise gained, but it is of practical use, because the bellows are purposely designed very deep in the front and the body of the camera automatically opens as the movement is placed into operation.

**The Reversing Back.**—The back of the camera is made reversible.

**The Ground-Glass Screen** is covered with a Focussing Hood so arranged that it can be removed in a moment should a focussing cloth or focussing glass be preferred.

---

**JAMES A. SINCLAIR & Co., Ltd.,** 54, Haymarket,  
LONDON, S.W.



# The Sinclair "UNA" Camera—continued.

## The Sinclair "UNA" Camera for High-Speed Work.

For high-speed photography such as racing, etc., and none other a Focal Plane Shutter is a *sine qua non*. As, however, all Focal Plane Shutters have blinds formed of rubber-coated material, we never recommend them for tropical climates. Where such shutters are required for foreign use it is desirable to have a lens diaphragmatic shutter in addition, and as a general rule we should recommend the purchase of one of our "Standard" Pattern Cameras, fitted with a supplementary Focal Plane Shutter, which could be removed if required.

## The Sinclair "UNA" Camera for the Tropics.

While the ordinary "Una" Camera is so well made that it is suitable for most tropical countries, yet for countries which are very hot and damp we supply the cameras with metal binding and French polished outside instead of the leather covering. Where the "Tropical Una" is required it should be distinctly ordered. The price is the same as for the ordinary pattern.

## The Sinclair "UNA" Camera for Telephotography.

Where photographs of distant objects are required, a Telephoto lens is desirable, and the best form consists in fitting a negative attachment to the camera lens in general use. Such an attachment permits of magnifications from 4 to 8 diameters—that is to say, that an object which, with the usual lens, occupies one square inch on the plate will, with such telephoto attachments, occupy from 16 to 64 square inches.

## The Sinclair "UNA" Camera for Wide-Angle and Architectural Photography.

The "Una" Camera will take lenses of such short focus as we usually sell for wide-angle work, but not those extreme wide-angle lenses which give results more interesting as curiosities than as pictures. The wide-angle lenses of the following foci are recommended:—

$\frac{1}{2}$ -plate .....	No. 2, Series V, Zeiss $4\frac{1}{2}$ in.	£3 4s.
$5\times 4$ or $9\times 12$ Cm. ....	No. 2, Series V, " $4\frac{1}{2}$ in.	£3 4s.
$\frac{1}{2}$ -plate .....	No. 3, Series V, " $5\frac{1}{2}$ in.	£4.

### The sizes and weights are as follows:

	Extension.	Size.	Weight.
$\frac{1}{2}$ -plate camera closed,			
without focussing hood	$11\frac{1}{4}$ in.	$5\frac{1}{2}\times 3\frac{1}{2}\times 6$	$2\frac{3}{4}$ lbs.
$5\times 4$ Ditto	$13\frac{1}{4}$ in.	$6\frac{1}{2}\times 4\frac{1}{2}\times 6\frac{1}{2}$	2 lbs. 11 ozs.
$\frac{1}{2}$ -plate Ditto	$16\frac{1}{4}$ in.	$8\frac{1}{2}\times 4\frac{1}{2}\times 8$	4 lbs. 1 oz.
$7\times 5$ Ditto	$17\frac{1}{4}$ in.	$8\frac{1}{2}\times 5\times 9$	4 lbs. 9 ozs.

The hood increases the width of each camera by  $\frac{1}{2}$ -inch and weighs respectively,

$\frac{1}{2}$ -plate,  $2\frac{1}{2}$  ozs.;  $5\times 4$ , 3 ozs.;  $\frac{1}{2}$ -plate,  $4\frac{1}{2}$  ozs.

In actual use the camera is usually carried with dark slide, film pack, roll holder or changing box in position, and without hood or focussing glass.

## The Sinclair Double Plate Holders.

Are perfectly made with pull-out slides, and they are exceedingly light as well as light-tight. Some customers prefer the ordinary double dark slides, book-form pattern, and we supply at extra prices if desired.

	Measure.	Weight.
Set of 3 $\frac{1}{2}$ -plate Sinclair Plate Holders ..	$6\times 1\frac{1}{2}\times 4\frac{1}{2}$	9 ozs.
" 3 $5\times 4$ " " " ..	$6\frac{1}{2}\times 1\frac{1}{2}\times 5\frac{1}{2}$	13 ozs.
" 3 $\frac{1}{2}$ -plate " " " ..	$8\frac{1}{2}\times 1\frac{1}{2}\times 5\frac{1}{2}$	1 lb. 2 ozs.
" $\frac{1}{2}$ -plate Best Quality Mahogany Dark Slides ..	$6\times 2\times 4\frac{1}{2}$	17 ozs.
" $5\times 4$ " " " ..	$6\frac{1}{2}\times 2\times 5\frac{1}{2}$	24 ozs.
" $\frac{1}{2}$ -plate " " " ..	$8\frac{1}{2}\times 2\times 5\frac{1}{2}$	2 lbs.

See a Sinclair Camera before purchasing any other make.

## PRICE LIST.

DESCRIPTION.	$\frac{1}{2}$ -plate.			5×4 or 9×12 cms.			$\frac{1}{2}$ -plate.			7×5 or 13×18 cms		
	£	s.	d.	£	s.	d.	£	s.	d.	£	s.	d.
The <b>Sinclair "UNA" Camera</b> , complete with brilliant or ground- glass View Finder, and 3 double Plate Holders, but without lens or shutter .. .. .	6	10	0	7	10	0	8	15	0	9	5	0
Ditto, but with Aldis "Anastigmat" Lens F/6, and Bausch & Lomb "Automat" Shutter .. .. .	9	0	0	10	5	0	13	15	0	15	10	0
Ditto, but with "Planastigmat" Convertible Lens and New "Automat" Shutter .. .. .	11	10	0	13	0	0	15	17	6	16	7	6
Ditto, but with Ross F/6·3 "Homo- centric" Lens and "Automat" Shutter .. .. .	11	10	0	13	0	0	15	17	6	17	17	6
Ditto, but with Ross F/6·3 "Homo- centric" Lens and New "Com- pound Shutter" .. .. .	12	0	0	14	5	0	16	17	6	18	17	6
Ditto, but with "Cooke" F/6·5 Lens and New "Compound" Shutter .. .. .	12	15	0	14	0	0	17	0	0	18	0	0
Ditto, but with Voigtländer "Heliar" F/4·5 Lens and New "Compound" Shutter .. .. .	16	10	0	18	10	0	—			—		
Ditto, but with Zeiss "Protar" Lens, 2 foci, F/6·3 and F/12·5, two Focussing Scales and New "Compound" Shutter .. .. .	16	0	0	19	0	0	22	5	0	22	15	0
Voigtländer Telephoto attach- ments for "Heliar" Lenses ..	4	5	0	4	15	0	5	10	0	5	10	0
Extra Double Plate Holders, each	0	10	0	0	12	0	0	14	0	0	15	0
Extra for 3 best Mahogany Double Dark Slides in place of Plate Holders .. .. .	0	18	0	1	0	0	1	1	0	1	3	0
Best Mahogany Dark Slides, each	0	16	0	0	18	0	1	1	0	1	2	6
Premo Film Pack and Fitting ..	0	10	6	0	12	6	0	17	6	0	18	6
Eastman Roll Holder and Fitting ..	1	10	0	1	10	0	2	0	0	2	0	0
Zeiss Roll Holder and Fitting ..	2	7	6	2	10	0	—			—		
Mackenzie Wishart Daylight Slide	0	15	0	0	18	0	1	1	0	—		
Mackenzie Wishart Plate En- velopes, each .. .. .	0	1	3	0	1	6	0	2	0	—		

JAMES A. SINCLAIR &amp; Co., Ltd., 54, Haymarket, LONDON, S.W.



## PRICE LIST—Continued.

DESCRIPTION.	$\frac{1}{2}$ -plate.	$5 \times 4$ or $9 \times 12$ cms.	$\frac{1}{2}$ -plate.	$7 \times 5$ or $13 \times 18$ cms.
	£ s. d.	£ s. d.	£ s. d.	£ s. d.
Leather Case for Mackenzie Envelopes (to hold twelve) ..	0 3 0	0 3 6	0 4 6	—
"Adon" Telephoto Lens & Fitting	3 10 0	3 10 0	—	—
Sinclair's "UNA" Light Filter, in case complete ..	0 15 0	0 15 0	0 18 6	0 16 6
Leather Case, to hold camera and three slides ..	0 9 6	0 11 6	0 15 0	0 17 6
Best Hand-Sewn Leather Case, with lock and key, to hold Camera and three Slides ..	1 5 0	1 7 6	1 15 0	1 17 6
Goerz "Anschutz" Focal Plane Shutter, specially adapted for use with the Sinclair Camera, and covered in Morocco Leather to match ..	4 0 0	4 5 0	4 10 0	4 10 0
Adams' Supplementary Focal Plane Shutter working at $1/150$ th to $1/800$ th of a second ..	3 10 0	3 15 0	4 0 0	5 5 0
Light Giraffe Tripod Stand ..	0 18 6	0 18 6	0 18 6	0 18 6
Ernemann Changing Box holding twelve plates or twenty-four films ..	2 5 0	2 10 0	3 15 0	—

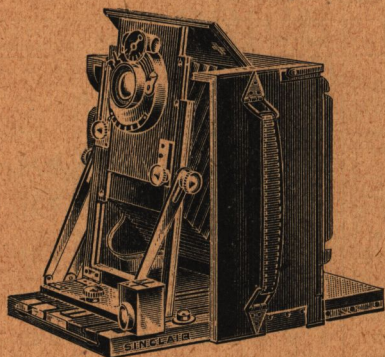
The following are the foci of the various lenses which we usually fit to the "UNA" Camera as shown in the Price List above. Any other make of Lenses or Shutters may be fitted if desired, and we shall always be glad to give estimates for Special Outfits made to Customers' own requirements.

DESCRIPTION.	$\frac{1}{2}$ -plate. Inches.	$5 \times 4$ or $9 \times 12$ cms. Inches.	$\frac{1}{2}$ -plate. Inches.	$7 \times 5$ or $13 \times 15$ cms. Inches.
Aldis "Anastigmat" Lens, Series II., F/6 ..	5	$5\frac{3}{4}$	$7\frac{1}{4}$	$8\frac{1}{2}$
"Planastigmat" Convertible Lens, F/6.8, two foci ..	$4\frac{3}{4}$ & 9	6 & 12	7 & 14	7 & 15
Ross F/6.3 "Homocentric" Lens..	5	6	7	$8\frac{1}{2}$
Taylor, Taylor & Hobson's "Cooke" Lens, Series III., F/6.5 ..	5	6	$7\frac{1}{2}$	$8\frac{1}{4}$
Voigtländer "Heliar" F/4.5 Lens..	$6\frac{1}{4}$	$7\frac{1}{8}$	$9\frac{1}{2}$	$9\frac{1}{2}$
*Zeiss "Protar" Lens, two foci, F/6.3 ..	5 & 9	$6\frac{1}{2}$ & $11\frac{1}{2}$	8 & 14	8 & 14

\*We always fit Zeiss Lenses of British make unless specially instructed to the contrary. Should the German Lenses be required, extra time must be given for the execution of orders. The Price is the same in both cases.

JAMES A. SINCLAIR & Co., Ltd., 54, Haymarket, LONDON, S.W.

# THE SINCLAIR "UNA" DE LUXE.



FOR ALL SPECIAL REQUIREMENTS.

FOR EXTREME WIDE-ANGLE ARCHITECTURAL WORK.

FOR EXTREME LONG-FOCUS TELE-PHOTOGRAPHY.

Showing "Una" de Luxe with very short focus lens, double rising front and swing front in action.

Although we contend that the Sinclair "Una" is the best universal camera, and that it will answer every requirement of the great majority of workers, yet at the request of our friends we have introduced another pattern which

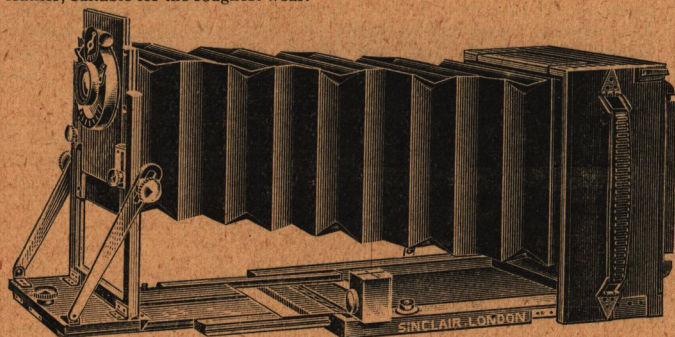
will take lenses of any focus, so that it is at once suitable for extreme wide-angle work, as well as those branches of Telephotography where an abnormal camera extension is required. In the Sinclair "Una" de Luxe we have embodied the curious features which have distinguished the "Una" and at the same time added a

## TRIPLE EXTENSION MOVEMENT, SWING FRONT, BACKWARD MOVEMENT OF BASEBOARD.

These additions make the Sinclair "Una" de Luxe absolutely unrivalled for any kind of photographic work, because they are all obtained without complexity of construction.

The Sinclair "Una" de Luxe is made of selected materials, and is of finest workmanship.

The Sinclair "Una" de Luxe is covered with hand-sewn black or brown leather, suitable for the roughest wear.



Showing triple extension for very long-focus lenses.

The Sinclair "Una" de Luxe may be had polished outside and brass-bound without any increase in price. This form is recommended for wet and tropical climates.

Extra prices for "Una" de Luxe in the ordinary pattern.

$\frac{1}{4}$ -plate	....	25/0	5x4	....	30/0	$\frac{1}{4}$ -plate	....	35/0	7x5	....	35/0
Russian leather bellows, extra,	$\frac{1}{4}$ -plate	..17/6	5x4	..21/0	$\frac{1}{4}$ -plate	..30/0	7x5	..35/0			

JAMES A. SINCLAIR & Co., Ltd., 54, Haymarket, LONDON, S.W.



# The SINCLAIR "JUNIOR UNA"

With BAUSCH & LOMB LENS  
and AUTOMATIC SHUTTER **£5.**  
IS THE BEST OUTFIT FOR  
For PLATES or PREMO FILM PACK.

IT IS VERY SMALL.

IT IS VERY LIGHT.

IT HAS GREAT RISING FRONT FOR VERTICAL  
AND HORIZONTAL PICTURES.

IT HAS A GOOD SHUTTER.

IT HAS A GOOD LENS.

IT IS BRITISH MADE.

Cameras somewhat similar in appearance have been on the market for years, but they lack the simplicity of design and strength of construction which have made our "Una" Cameras so popular. The "**SINCLAIR JUNIOR UNA**" is made of the best mahogany, polished inside and covered with real morocco leather outside. The Camera takes  $4\frac{1}{4} \times 3\frac{1}{4}$  plates or the Premo Film Pack.

**The Lens** is one of the well-known Bausch & Lomb Rapid Rectilinears of 5-inch focus and works at *f*/8.

**The Shutter** is a Bausch & Lomb "**Automatic**" which requires **no setting** and is marked with speeds of 1 to  $\frac{1}{100}$ th second and also gives **Time** and **Bulb** Exposures.

**Rising Front** is exceptional for Camers of this class and is  $1\frac{1}{4}$  inches in both the horizontal and vertical direction.

**The Plate Holders.** Six single metal plate holders of **our own manufacture** are supplied with each Camera. These are very small and the six only measure  $5\frac{1}{8} \times 3\frac{3}{4} \times \frac{7}{8}$  inches.

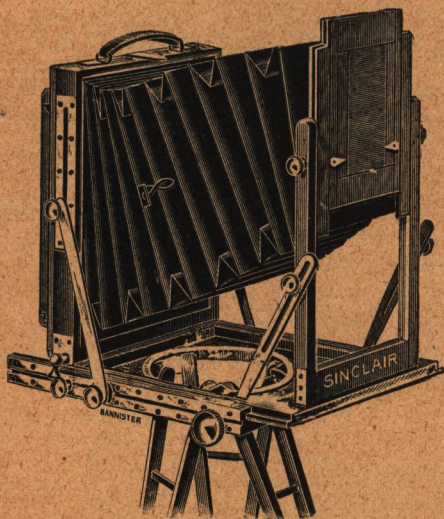
**The Film Pack for Daylight Changing.** If preferred, the Camera may be had fitted with our **Improved Kodak Film Pack** neatly covered with leather at the same price as with the dark slides.

**The Size** is only  $5\frac{3}{4} \times 5 \times 2\frac{3}{8}$  and **weight with Lens** 1 lb. 11 ozs.

**PRICE** Complete of "Sinclair Junior Una" Camera, Lens, Shutter, Focussing Screen and Six Metal Slides.... **£5 0 0**

**JAMES A. SINCLAIR & Co., Ltd.,** 54, Haymarket,  
LONDON, S.W.

# SINCLAIR'S "REX" CAMERA.



Perfection of  
Design and  
Finish.



Great Latitude  
in all  
Movements.



An Exquisite  
Instrument.

**Sinclair's "Rex" Camera** is the lightest and most perfect instrument of the Tourist pattern, and the usual defects of compact models have been entirely eliminated. It is the best camera for expert Amateurs or Professionals who require an instrument of the highest efficiency, embracing every range of movement in the smallest possible space.

The "Rex" Camera is made of the finest selected Spanish mahogany. It is built on scientific principles, and strength and rigidity have not been sacrificed. Metal is made to work on metal throughout, and all the milled nuts are fastened with locking screws, so that no part can work loose and get lost.

**The Bellows** have long extension and are made as deep in the front as possible. They are fitted with tabs in order to draw them away from the ground glass when using wide-angle lenses.

**JAMES A. SINCLAIR & Co., Ltd.,** 54, Haymarket,  
LONDON, S.W.



**Sinclair's "Rex" Camera—continued.**

**The Rising and Swing Front** is of unique and simple construction and enables the worker to utilise to the utmost the great covering power of modern anastigmatic lenses. With most cameras of a somewhat similar design the bellows are forced backwards towards the plate, when the front is raised to the necessary extent, and consequently trouble is experienced through a portion of the picture being cut off. We have overcome this serious defect in Tourist Cameras by having a front panel moving upwards independently of the bellows and so arranged that it can be clamped at any point very rigidly and perfectly parallel to the sensitive surface.

**The Side Swing** is fitted to the back of the camera, a movement which is frequently overlooked, but which is of great value in Architectural and Portrait work.

**The Reversible Back and Focussing Screen** can be instantaneously released from the camera by means of a spring catch. It may be reversed for vertical or horizontal pictures, and again firmly clamped in position by simply pressing forward.

**The Dark Slides** are of book-form and have light-proof rebated hinges to the shutters, rendering them safe for tropical climates. Each slide is fitted with spring catches to prevent their being accidentally opened when loaded.

**The Brass Turntable** does not project beyond the baseboard, and the rule-joint stand supplied with it is extremely rigid and of the best possible quality.

Size in Inches.	Camera, 3 Double Dark Slides, Turntable and Tripod Stand.	Extra Double Dark Slides.	Extra if all Brass-Bound.	Extension.	Best Solid Leather Case.
$6\frac{1}{2} \times 4\frac{3}{4}$	£10 10 0	£1 1 0	£1 7 6	15 in.	£1 15 0
$8\frac{1}{2} \times 6\frac{1}{2}$	12 10 0	1 4 0	1 15 0	19 in.	2 2 0
$12 \times 10$	18 0 0	1 16 0	2 0 0	26 in.	3 0 0
$15 \times 12$	22 10 0	2 8 0	2 10 0	33 in.	3 10 0

5 % discount for cash with order.

**For Telephoto work**, or for use with heavy lenses, we supply an Ash strut with two hinged joints to attach between the leg of Tripod and front of "Rex" Camera, adjustable to focus, to maintain perfect rigidity. Price, for Cameras up to  $10 \times 8$ , 7/6;  $12 \times 10$  and  $15 \times 12$ , 10/6.

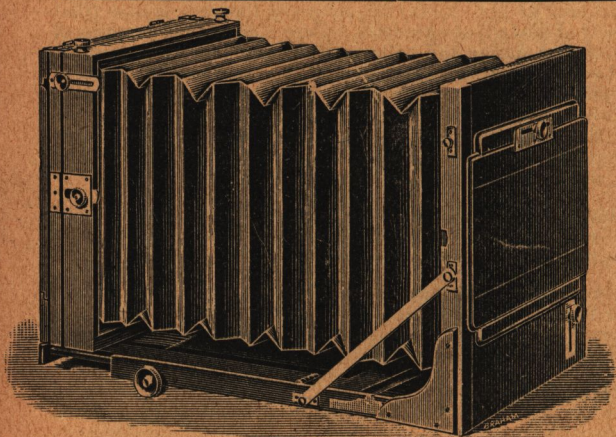
(It is necessary to have the Camera to make the fitting.)

We shall be glad to advise customers concerning lenses, and will carefully select those purchased through us.

**JAMES A. SINCLAIR & Co., Ltd., 54, Haymarket, LONDON, S.W.**

## . . SINCLAIR'S . .

### Square Bellows Long Extension Cameras.



As supplied  
to  
Government  
Departments,  
Engineering  
Works  
and  
Professional  
Photographers.

This Camera is the best for the Professional and Technical Photographer. It is necessarily rather heavy, but great care is taken to ensure parallelism between front and back, and it is an instrument which will stand rough wear and tear. For hot and wet climates we recommend that both the Camera and Dark Slides should be brass-bound. It has the maximum of movement in every direction, and we pay great attention to the rising front.

**Specification.**—Camera and slides of finest Spanish mahogany, improved swing back, great rise to front, check screws to all milled heads, reversing frame, horizontal sliding front, patent plate screen and dark slides fitted with special spring fastenings, and shutters with rebated hinges.

Camera and 3 double dark slides .....	$6\frac{1}{2} \times 4\frac{3}{4}$	$8\frac{1}{2} \times 6\frac{1}{2}$	$12 \times 10$	$15 \times 12$
	£9 0 0	£11 0 0	£16 10 0	£20 0 0
Best solid leather case with spring lock .....	1 15 0	2 2 0	2 Cases. 4 0 0	2 Cases. 6 5 0
Rule joint tripod stand ..	1 0 0	1 1 0	1 11 6	1 15 6
Extra dark slides, each ..	1 1 0	1 4 0	1 16 0	2 8 0
Brass Binding, extra ....	1 7 0	1 13 0	2 0 0	2 7 6

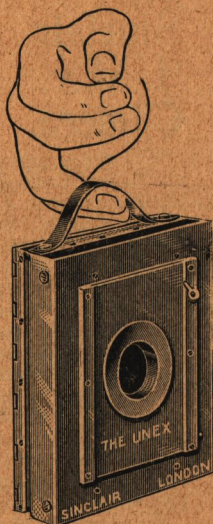
5% discount for cash.

Messrs. COLE, MARCHENT & MORLEY, Ltd., Prospect Foundry, Bradford, write:—"We congratulate you on the careful attention shown to a number of details which are often omitted."

JNO. B. SCRIVENOR, Esq., Government Geologist, Federated Malay States, writes:—"The whole-plate camera gives every satisfaction."

**JAMES A. SINCLAIR & Co., Ltd.,** 54, Haymarket, LONDON, S.W.





# The Sinclair “Unex.”

Taking either Plates or  
Films—the latter loaded  
or unloaded in daylight.

IT IS THE BEST

## Tourist's Camera.

Showing Camera closed but  
containing dark slide or one  
dozen films ready for use.

Size  $5\frac{1}{4} \times 4\frac{1}{4} \times 1\frac{1}{4}$ .

*Invaluable to the Tourist.*

*Invaluable to the Explorer.*

*Invaluable to the Alpine Climber.*

### BECAUSE—

IT is fitted with a perfect Lens.

IT is fitted with a perfect Shutter.

IT has a Rising Front in both directions.

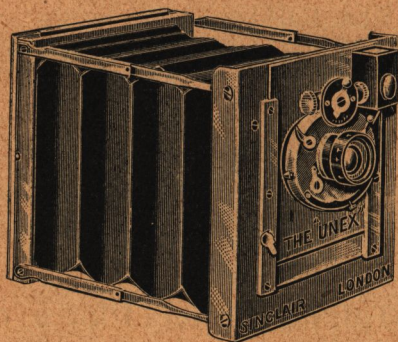
IT can be loaded and unloaded with Films in daylight.

IT is exceedingly compact.

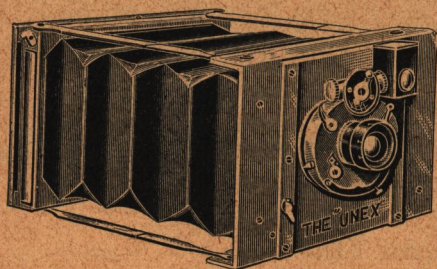
IT is the lightest Camera taking 12 quarter-plate pictures.

IT is beautifully made and finished.

JAMES A. SINCLAIR & Co., Ltd. 54, Haymarket,  
LONDON S.W.



"Unex" Camera open ready or taking vertical pictures with front raised.



"Unex" Camera open ready or taking Horizontal pictures.

## The . . . **Sinclair 'UNEX' Camera.**

We have designed the "Unex" Camera to meet the demands of the Tourist, the Artist, the Traveler and the Sportsman, for a truly portable camera—a photographic note book that could be carried without trouble or inconvenience; and in this capacity the "Unex" will satisfy the most exacting demands.

Although the "Unex" Camera is the lightest perfect instrument that has ever been produced it has been constructed on simple, yet scientific, lines, and with complete absence of complicated mechanism.

## The "UNEX" Detachable Lens System.

Although the "Unex" Camera in its ordinary form is exceedingly light and compact, and measures in case complete only  $6 \times 4\frac{3}{4} \times 2\frac{3}{4}$ , we have arranged the Camera so that, if desired by Alpine climbers and others, it **may be carried ready loaded in any ordinary pocket.** This is possible owing to the fact that the

**Lens, Shutter, Finder and Levels,**

which are all joined together, may be instantaneously removed from the Camera. Being attached with a bayonet fitting, the simple movement of a half turn to the left allows them to be removed and carried in a separate pocket case.

**The Morocco Sling Carrying Case.**

Each Camera is sent out complete in a best quality collapsible Morocco Sling Case, and weighs complete 1 lb. 10 ozs.

**JAMES A. SINCLAIR & Co., Ltd., 54, Haymarket, LONDON, S.W.**



# The Sinclair 'Unex' Camera.

## SPECIFICATION.

The front of the Camera is constructed of a hard aluminium alloy covered with the finest black Morocco leather, and attached to the front is a rotating aluminium panel which carries the lens and allows of its being decentred so that a very **considerable rising front is secured for both vertical and horizontal pictures.** The front of the Camera is attached to the back frame by means of folding extension springs, and by which when opened for use it is kept perfectly rigid and parallel with the sensitive surface.

**The Bellows** are of fine black Morocco leather, and are made of such a shape that they allow of considerable rise being given to the lens without cutting off light from the plate.

**The "Unex" Plate and Film Adapting Back** is a special feature of the "Unex" Camera. It will take either the "Unex" Plate Holder, Ground-Glass Focussing Screen or Premo Film Pack. This Premo Film Pack holds 12 flat films which may be inserted in or removed from the Camera in daylight, and by means of a recent improvement a film when used can be taken out of the pack and developed without disturbing the remainder.

**The "Unex" Lens.**—A lens giving pictures of such fine definition that they are capable of after-enlargement is, we consider, a necessity in small cameras. We have therefore fitted a **focussing Cooke Lens working at F/6.5**, and scaled for distances from 3 yards to Infinity. This gives critical definition over the whole of the plate with the front raised to its fullest extent.

**The "Unex" Shutter.**—Not less important than the Lens is a good Shutter, and the Compound Sector Shutter is one of the best and most reliable of the diaphragmatic type. It gives a long range of instantaneous as well as time exposures, it is regulated by a pneumatic brake. It is also adapted for "hand" and "pneumatic" release, and being well enclosed, is not likely to get out of order.

**The "Unex" Finder** is of the brilliant type and is fitted with two levels to ensure accurate work when photographing architectural subjects.

**The "Unex" Plate Holder.**—This light and compact plate-holder is made of German silver and is beautifully bronzed. Being very little larger than the plate itself, a number may be carried in various pockets where it is desired to use plates instead of films.



The "Unex" Plate Holder.

The Camera, with lens detached, measures  $5\frac{1}{2} \times 4\frac{1}{2} \times 1\frac{1}{2}$ .

The outside size of case carrying Camera, Lens, Finder, and loaded with 1 dozen films or with plate holder, measures  $6 \times 4\frac{3}{4} \times 2\frac{3}{4}$ .

**Price of "Unex" Camera, complete in morocco leather**

case, for use with Film Packs.....	£10 10 0
Set of 3 Plate Holders and Focussing Screen.....	0 12 6
Extra Plate Holders .....	0 3 6

**JAMES A. SINCLAIR & Co., Ltd.,** 54, Haymarket, LONDON, S.W.

# The "SOHO" Reflex Camera.

We can recommend the "Soho" Camera for those who want a good instrument of the "Reflex" Type." It is thoroughly well thought out and constructed of good materials with excellent workmanship.

**The Camera** is made of mahogany covered with leather, and the exterior fittings are ebonized black metal.

## The Shutter

is of the Focal Plane type, and all adjustments are made from the outside without opening the Camera in any way. The speeds are shown on an automatic indicator on the side of the instrument. Exposures can be regulated from  $\frac{1}{100}$ th of a second to  $\frac{1}{500}$ th; time exposures of any duration can also be made. The

Shutters are all tested and the speeds given are relative and accurate.

**The Hood** is of a large size and allows the image to be accurately focussed on the finder right up to the moment of exposure.

**The Revolving Back** permits the slide being instantaneously changed from the vertical to the horizontal position.



## PRICE LIST.

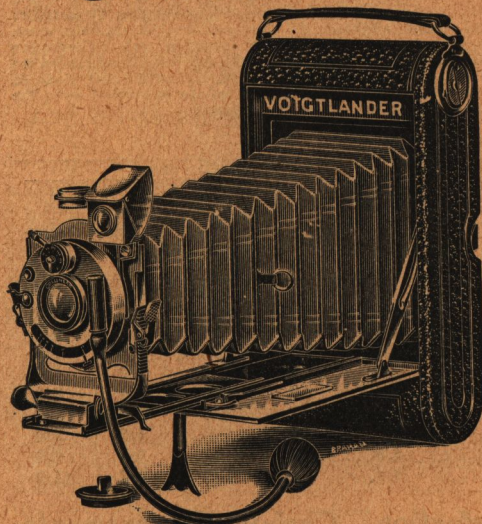
DESCRIPTION.	Postcard* $5\frac{1}{2} \times 3\frac{1}{2}$ .	$\frac{1}{2}$ -plate.	$5 \times 4$ .	$\frac{1}{2}$ -plate.
The "Soho" Focal Plane Reflex Hand Camera as specification, without lens, including 3 double Plate Holders .....	£ s. d. 12 10 0	£ s. d. 12 0 0	£ s. d. 18 0 0	£ s. d. 24 10 0
If fitted with Ross Homocentric C f/6.3; $5\frac{1}{2}$ in. focus; $5 \times 4$ , 6 in. focus; $\frac{1}{2}$ -plate, $8\frac{1}{2}$ in. focus ...	17 0 0	16 5 0	22 10 0	31 10 0
If fitted with Zeiss "Tessar" Lens f/6.3, $\frac{1}{2}$ -plate, $5\frac{1}{2}$ in. focus; $5 \times 4$ , $6\frac{1}{2}$ in. focus; $\frac{1}{2}$ -plate, $8\frac{1}{2}$ in. focus ...	18 5 0	16 15 0	28 15 0	33 0 0
If fitted with Zeiss "Unar" Lens f/4.5 $\frac{1}{2}$ -plate, $5\frac{1}{2}$ in. focus; $5 \times 4$ , $6\frac{1}{2}$ in. focus; $\frac{1}{2}$ -plate, $8\frac{1}{2}$ in. focus ...	18 10 0	18 0 0	24 0 0	33 10 0
Solid Leather Cases lined, lock and key, with handle and sling strap .....	1 1 0	0 17 6	1 2 6	1 7 6
Extra Double Plate Holders ....	0 10 0	0 7 0	0 10 0	0 15 0
Extra Double Backs, book form, best quality .....	0 15 0	0 12 6	0 15 0	1 0 0

\*In all Cases the Post-card size is listed with lens of the same focus as  $5 \times 4$ . In this size the back does not reverse.

**JAMES A. SINCLAIR & Co., Ltd.,** 54, Haymarket, LONDON, S.W.



# SINCLAIR'S Voigtländer Pocket Camera.



Double Extension,  
for  
Plates or Films,  
fitted with  
Voigtländer  
Collinear Lens  
and  
New "Koilos"  
Shutter.

**Model A.** Fitted with "Koilos" Sector Shutter.

For Plates or Films, $4\frac{1}{2} \times 3\frac{1}{2}$ .....	£9 10 0
Or Single Extension and Dynar F/6 Lens .....	7 15 0
Post-Card Size, $5\frac{1}{2} \times 3\frac{1}{2}$ .....	11 8 0
$5 \times 4$ .....	11 0 0

To those of our clients wanting a Folding Camera of the roll film type, but constructed so that plates may be used, we unhesitatingly recommend this new model. The general construction of the apparatus leaves nothing to be desired and the front is perfectly rigid, even when fully extended for use with long-focus lenses.

**The Back** of the Camera is of the combination pattern fitted with a panel which may be instantaneously removed and a focussing screen supplied with the instrument, or one of the dark slides is inserted in its place.

**The Rising and Cross Front Movement** is very considerable and will be appreciated for architectural work.

**The Brilliant Finder with Level** attached is reversible.

**The "Koilos" Shutter** is an improved Sector type with 3 leaves. It is very silent and gives exposures ranging from  $1/150$  to 1 second, or time exposure at will.

**The "Collinear" Lens** is too well known for its excellent qualities to need any extra commendation on our part. It works at  $f/6.8$  as a combined lens, or  $f/12.5$  as a single lens, and thus 2 foci are available on the same camera, 5 inches and 9 inches. The definition with the largest stop is critical to the very edge of the plate.

Cameras are sent complete with 3 Single Metal Slides and Focussing Screen.

$\frac{1}{2}$ -plate, $4\frac{1}{2} \times 3\frac{1}{2}$ .....	£9 10 0	Leather Cases .....	7/6
Post-Card, $5\frac{1}{2} \times 3\frac{1}{2}$ .....	11 8 0	" .....	7/6
$5 \times 4$ .....	11 0 0	" .....	7/6
Extra Slides, the set of 3 .... $\frac{1}{2}$ -plate, 4/6.		Post-Card, 6/0.	$5 \times 4$ , 6/0.

**JAMES A. SINCLAIR & Co., Ltd.,** 54, Haymarket, LONDON, S.W.

## Developing and Printing Promptly Executed on our Own Premises.

The very great increase in business in the Printing and Developing Department has led us to make considerable additions to our premises so that the work may be dealt with promptly as well as in the best possible style. Customers may rely on our developing plates or films with the greatest care, and the formulæ we use are such as will obtain the best possible results, particular care being given to each exposure. Moreover we shall always be pleased to advise customers as to the possibility of their work being suitable for exhibition purposes.

### Prices per dozen.

Size.	Developing.	PRINTING.				
		P.O.P. Squeegeed only.	P.O.P. Squeegeed and Backed.	Bromide or Velox.	Platinotype.	
Pocket Kodak and $2\frac{1}{4} \times 2\frac{1}{4}$	1/6	1/6 & 1/10	2/0	1/6 & 1/10	2/6	
No. 1 F.P. Kodak. $3\frac{1}{2} \times 2\frac{1}{4}$	2/0	2/0	2/9	2/0	3/0	
No. 1a F.P. Kodak. $4\frac{1}{4} \times 2\frac{1}{2}$	3/0	2/6	3/3	2/6	4/0	
No. 2 Bull's-Eye. $3\frac{1}{2} \times 3\frac{1}{2}$	3/0	2/6	3/3	2/6	4/6	
No. 3 Kodak. $4\frac{1}{4} \times 3\frac{1}{4}$ ..	3/0	2/6	3/6	3/0	4/6	
$5\frac{1}{2} \times 3\frac{1}{2}$ .....	3/6	3/0	4/0	3/9	6/0	
$5 \times 4$ .....	3/6	3/0	4/0	3/9	5/6	
$6\frac{1}{2} \times 4\frac{3}{4}$ and $7 \times 5$ .....	4/0	4/6	6/0	4/6	7/0	
$7\frac{1}{2} \times 5$ .....	4/6	5/6	7/6	5/6	8/0	
$8\frac{1}{2} \times 6\frac{1}{2}$ .....	5/6	8/0	10/0	8/0	12/0	

## Sinclair's "Perfection" Carbon Enlargements.

We recommend customers to consult us before placing enlargements in hand. Our extended experience with this beautiful and permanent process enables us to advise regarding the most suitable colour and style for use with any particular negative. Clients abroad and in distant parts of the country may safely leave their orders to our discretion, and we shall produce the most artistic results possible.

### On Matt or Smooth Papers—White or Toned.

	10 × 8	12 × 10	15 × 12	18 × 15	20 × 16
Enlargements .....	8/0	9/0	12/6	16/0	18/0
Extra copies, each .....	1/0	1/6	2/3	3/6	4/3
Mounting and Spotting....	10d.	1/0	1/0	1/6	2/0
Mounting on Plate-sunk					
Mount and Spotting ..	1/3	1/3	1/6	2/6	3/0

A very large range of Colours are available for these enlargements—Engraving Black, Sepia of various shades, Red Chalk, Italian Green, Standard Brown, Dark Blue, etc., etc.

For those who want an ordinary Carbon Enlargement without the special care and attention of our Perfection series, we quote the following prices.

These are the best quality commercial enlargements:—

10 × 8	12 × 10	15 × 12	18 × 15	20 × 16	24 × 20
6/6	7/0	10/0	13/6	14/6	17/6

Framing in all Styles for Exhibition.

**JAMES A. SINCLAIR & Co., Ltd.,** 54, Haymarket,  
LONDON, S.W.



# A Unique and Permanent Way to Preserve Photographic Records.

**The old-fashioned and heavy album superseded.**

Travellers and Tourists have long wanted some more pleasing way of preserving records of their journeys and holidays than the ordinary album affords, and the method which we have introduced appeals at once to all who have seen it. It is simply to print the negatives in Platinotype on thick paper with large masked margins, and then to bind the prints so that they form the leaves of a book. The resulting volumes form delightful souvenirs, and those who have tried this method never return to the cumbersome album.

## Special Platinotype Printing.

With the negatives judiciously masked to get the most artistic result, shielding negatives where necessary and sunning down the skies on prints where required.

Outside size of paper.....	$\frac{1}{2}$ -plate	$7\frac{1}{2} \times 5$	$\frac{1}{1}$ -plate	$12 \times 10$
Suitable for negatives .....	$\frac{1}{4}$ -plate	$5 \times 4$	$\frac{1}{2}$ -plate	$\frac{1}{4}$ -plate
Price per dozen prints on thick paper .....	7/0	8/0	12/0	20/0
Price per dozen prints on KK paper .....	8/6	9/6	13/6	22/0
Price per dozen on Special YY and ZZ paper .....	10/0	11/0	16/0	24/0

## Binding Platinotype Prints.

In Levant or Hard Grain Morocco, Pigskin, Roan, or any other style, with best finish, title pages, and gilt edges.

	Roan.	Hard Grain Morocco.	Pigskin.	Finest Levant.
$\frac{1}{2}$ -plate prints ....	16/0	25/0	32/0	35/0
$\frac{1}{4}$ -plate prints ....	18/6	32/6	40/0	43/0

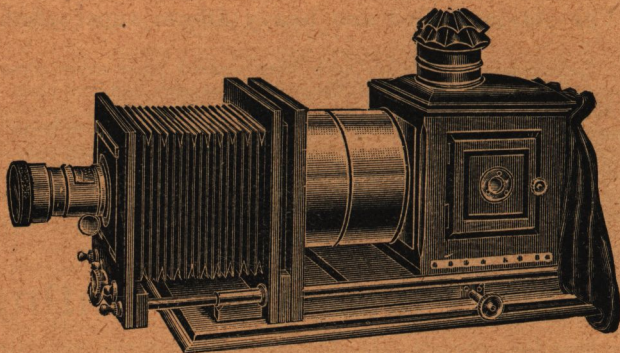
Binding in all other styles at proportionate prices.

**JAMES A. SINCLAIR & Co., Ltd.,** 54, Haymarket, LONDON, S.W.

# SINCLAIR'S

## "Perfection" Enlarger

is the best Enlarging Apparatus.



This Enlarger will appeal to those who appreciate the finest workmanship and the consequent ease in working. To the uninitiated, any arrangement which will hold a condenser and lens seems to be about the same as actual results are concerned, but the expert learns that such is not the case. The front of the lantern must be so constructed that it has long extension, care being taken to hold the lens board parallel with the surface of the plate; provision must be made for sliding the lantern body away from the condenser, and the body should also provide for any form of illuminant. All the points are combined in the "Perfection" Enlarger.

It is so constructed that it is extremely rigid even when bellows is fully extended. The mahogany is thoroughly seasoned, the bellows of the best leather, and the brass work beautifully finished and lacquered. The stage where negative is inserted is open at the top, so enabling portions of large negatives to be included. The carriers supplied with the apparatus are square in their outside dimensions, and thus the negative can be placed in the apparatus either vertically or horizontally. The light chamber which is suitable for any form of illuminant, is adjusted to and from the condenser by means of a rack and pinion, a wide range of adjustments being provided, and thus **Reducing** as well as **Enlarging** is within the capabilities of the instrument. Each apparatus is supplied with fine focussing adjustment. The prices include Oil Lamp or Incandescent Gas or Acetylene Burners.

### Diameter of Compound Condensers.

5½ in.	6 in.	6½ in.	7 in.	8 in.	9 in.	10 in.	11 in.
£7 10	£8 13	£9	£10	£12 10	£14	£17 10	£21

Any form of lens can be fitted to these Enlargers, but we suggest for preference such lenses as the Ross "Homocentric," Zeiss "Protars" or the Cooke Lens.

For cheaper quality see general catalogue.

**JAMES A. SINCLAIR & Co., Ltd.,** 54, Haymarket, LONDON, S.W.

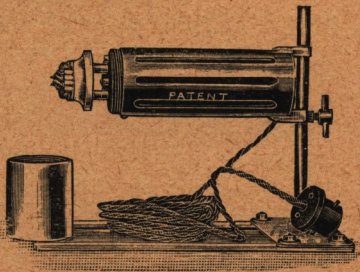


# THE "KAMA" ENLARGING AND PROJECTION ELECTRIC LAMP (PATENT).

**Illuminant up to 1,000 candle power without any special wiring or fittings.**

The Nernst light, as is well-known, is a radiant of high candle power, but using much less current than the ordinary incandescent electric lamps. It is the most economical electric light known. These lamps are complete in themselves, no special wire resistance or auxiliary appliances being necessary to use with them. They can be used on any electric light installation from 95 to 160 or from 195 to 260 volts. In the event of a filament being broken or destroyed, it requires only a few seconds to take the old one out and put a spare one in its place.

Each lamp is supplied with nine feet of connecting cord and plug to fit any bayonet holder.



## PRICES.

### No. 1.

35-60 c.p. (according to voltage).

Lamp, complete	.. 18/0
Spare Burner	.. 2/6
Spare Resistance	.. 1/3

Extra Cord, 4d. per ft.

Lantern 2/0. State Voltage

### No. 2.

300-500 c.p. (according to voltage).

Lamp, complete	.. 30/0
Spare Burner	.. 5/0
Spare Resistance	.. 2 0

Adjustable Tray to fit any  
Lamp required when ordering.

### No. 3.

500-1000 c.p. (according to voltage), about 1000 c.p. on 200 volt circuit.

Lamp, complete	.. 45/0
Spare Burner	.. 10/0
Spare Filaments, each	2/0
Spare Resistances	.. 2/6

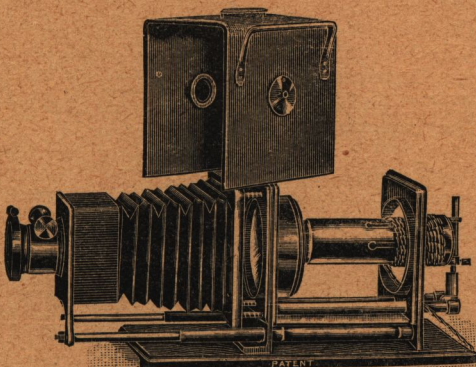
## THE 'KAMA' LANTERN

for use with the Kama Electric Lamp, Acetylene Light or Oxy-hydrogen Burner. The pattern of Kama Lantern that we sell is now fitted with a  $4\frac{1}{2}$  inch compound condenser and large diameter,  $2\frac{3}{4}$  in. front lenses. It has extension front so that long or short-focus lenses may be used and is sold complete in polished wood case.

Lantern as described with case

£6 0 0

If with 2 inch lens and without case 25/0 less. this Lantern £2 5 0.



No. 3 Kama Lamp for use in

**JAMES A. SINCLAIR & CO., Ltd., 54, Haymarket, LONDON, S.W.**

# THE 'Owen' Topometer.



(PATENTED IN ALL COUNTRIES.)

## A New Military and Naval Range Finder and General Surveying Instrument.

### Some advantages and Uses of the Topometer.

#### **MILITARY.**

The Topometer can be used for taking ranges and dimensions of any distant object with great exactness by one man.

The Topometer registers the ratio of distance to base, and makes the base at the point observed.

The Topometer will measure the distance of an object without the observer having to move in a lateral direction.

The Topometer may be used as a Depression Range Finder, without the necessity for a pedestal or levelling.

The Topometer during attack, when, owing to enemy's fire, only a momentary observation is possible, will give the range without the necessity for leaving cover.

#### **NAVAL.**

The Topometer may be used as a Range Finder from a fighting top.

The Topometer may be used from sea level when attacking permanent land fortifications.

The Topometer is the best instrument for Station Keeping and Coast Navigation.

The Topometer is unrivalled for rapid sextant work when it is advantageous to avoid the delay of consulting mathematical tables.

#### **SURVEYING.**

The Topometer used with a Plane Table is the best instrument for Rapid and Accurate Survey Work.

**THE TOPOMETER DOES NOT NEED A DEFINITE BASE,  
MATHEMATICAL TABLES OR DIFFICULT CALCULATION.**

Weight in case complete.

**Price £4 4 0.**

*Send for the Topometer Booklet.*

*Manufacturers and Licencees—*

**James A. Sinclair & Co., Ltd.,**  
**54, HAYMARKET, LONDON, S.W.**