

HELIAR REFLEX

Established
. 1756. .

V
O
I
G
T
L
Ä
N
D
E
R



V
O
I
G
T
L
Ä
N
D
E
R

Sole Agent for Great Britain and Colonies:

F. G. PHILLIPS, 12 Charterhouse St., Holborn Circus, London, E.C.

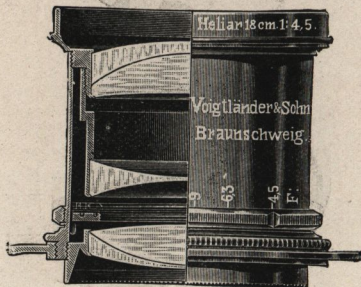
Voigtländer

ESTABLISHED 1756 *& Sohn AG*

“Heliar” Lens.

(Constructed by DR. HANS HARTING, F.R.P.S.)

**A brilliant
Anastigmatic
Objective,
working at a
full aperture of
F 4·5
in all sizes.**



**The Lens
for Reflex
Cameras.**

Equiv- alent Focus.		Aper- ture.	Size of Plate sharply covered F 4·5.	Price.	Code Word.	Mounted specially for Reflex Cameras.	Code Word.	Focussing Mount.	Code Word.
c/m	ins.	ins.	ins.						
5	2	1 ⁷ / ₈	1 ³ / ₈ × 2	£4 0 0	Fiasco
8 ¹ / ₂	3 ³ / ₈	1 ¹ / ₂	2 × 2	4 15 0	Fiber
12	4 ⁷ / ₈	1 ¹ / ₂	3 ¹ / ₈ × 2 ³ / ₈	5 10 0	Fibrin	£5 15 0	Fixage	£6 5 0	Fiscus
16	6 ¹ / ₂	1 ¹ / ₂	4 ¹ / ₈ × 3 ¹ / ₈	7 0 0	Fidello	7 5 0	Filius	7 15 0	Figaro
18	7 ¹ / ₈	1 ¹ / ₂	4 ¹ / ₈ × 3 ³ / ₈	8 0 0	Figella	8 5 0	Filigran	8 15 0	Figurina
24	9 ³ / ₈	2 ¹ / ₂	7 × 5	13 0 0	Finota	13 10 0	Finte	14 0 0	Finale
30	11 ¹ / ₈	2 ¹ / ₂	8 ¹ / ₈ × 6 ¹ / ₈	18 0 0	Firna
36	14 ¹ / ₂	3 ¹ / ₈	9 ¹ / ₈ × 7	24 0 0	Fisano
42	16 ¹ / ₂	3 ¹ / ₈	10 ³ / ₈ × 8 ¹ / ₈	31 0 0	Fiscal
48	19	4 ¹ / ₈	12 × 10	37 10 0	Fistel
60	24	5 ¹ / ₈	16 × 12	75 0 0	Finger

The “**Heliar Lens**” is a brilliant Anastigmatic Objective working at a full aperture of F 4·5 in all sizes; it is suitable for the most rapid instantaneous work, also for Portraits, Groups, Landscapes, &c.

Owing to its great luminosity instantaneous exposures in the open-air can be taken ($\frac{1}{1250}$ th of a second or less) in favourable light. The definition is excellent, and the lens is perfectly free from coma.

Small pictures taken with “**Heliars**” can be enlarged without any noticeable decrease of definition.

“**Heliar**” Lenses, combined with our Telephoto attachments, will be found most suitable for Telephotography.

5 $\frac{1}{2}$ c/m and 8 $\frac{1}{2}$ c/m specially made for Cinematograph work.

The cost of pairing two “**Heliars**” for Stereoscopic Work is 8/-

Send for Full List to 12, Charterhouse St., Holborn Circus, London, E.C.

Vogtlander

ESTABLISHED 1756 & Sohn AG

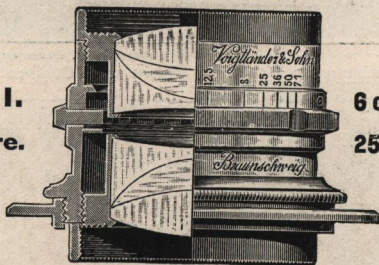
"Collinear" - Lens. -

"THE PERFECT LENS."

The "Collinear" is the most perfect type of anastigmat lens. It has all the corrections that is possible in a lens of this description. It will make a simultaneously sharp picture of vertical and horizontal lines crossing each other, or a perfectly sharp picture of concentric circles.

"Collinear" Lenses are symmetrical, the front and back combination being exactly the same focus; each combination is in itself corrected, achromatic, anastigmatic, of sharp defining power, and can be used as a single lens.

Series II., F 5.4, is used for extra rapid work with a focal plane shutter, also most suitable for all work performed in a weak light. This lens is generally used by Press Photographers for photographing horse races, athletes, animals in nature, &c.



SERIES II.

Full Aperture.

6 c/m to 20 c/m, F 5.4.

25 „ „ 60 „ „ F6.3.

Equivalent Focus.		Diameter of Lens.	Size of Plate sharply covered.		Ordinary Mount.	Code Word.	Countersunk Mount.		Focussing Mount.							
			At Full Aperture	Stopped Down.			Price.	Code Word.	Price.	Code Word.						
c/m	ins.	m/m	ins.	ins.	£	s	d.	£	s	d.	£	s	d.	Code Word.		
6	$2\frac{1}{2}$	11	2×2	$3\frac{1}{2} \times 3\frac{1}{2}$	4	10	0	Galen								
7	$2\frac{1}{4}$	13	$3\frac{1}{4} \times 2\frac{1}{4}$	4×4	4	10	0	Galeotto	4	15	0	Gabun	5	5	0	Nabob
9	3	17	$4 \times 2\frac{1}{2}$	$4\frac{1}{2} \times 3\frac{1}{2}$	5	0	0	Gandara	5	5	0	Gabes	5	15	0	Nager
12	4	23	$4\frac{1}{2} \times 3\frac{1}{2}$	$6\frac{1}{2} \times 4\frac{1}{2}$	5	15	0	Gaston	6	0	0	Gaflun	6	10	0	Narcose
13½	5	26	5×4	$6\frac{1}{2} \times 5\frac{1}{2}$	6	5	0	Gatter	6	10	0	Galmei	7	0	0	Narcin
15	5½	29	$6\frac{1}{4} \times 4\frac{1}{4}$	$8\frac{1}{2} \times 6\frac{1}{2}$	6	15	0	Gawein	7	0	0	Gamba	7	10	0	Nauders
20	8	38	$7\frac{1}{2} \times 5$	$9\frac{1}{2} \times 7$	9	0	0	Gemma	9	8	0	Gaza	9	18	0	Negus
25	9½	40	$8\frac{1}{2} \times 5$	$9\frac{1}{2} \times 8$	11	0	0	Georgia	
31	12½	48	$8\frac{1}{2} \times 6\frac{1}{2}$	12×10	15	0	0	Ginster	
37	14½	58	9×7	$14 \times 10\frac{1}{2}$	20	0	0	Gorgone	
44	17½	70	11×8	$15\frac{1}{2} \times 11\frac{1}{2}$	27	0	0	Gudrun	
52	20½	82	12×10	$17\frac{1}{2} \times 13\frac{1}{2}$	34	0	0	Gunteram	
60	23½	91	$13\frac{1}{2} \times 10\frac{1}{2}$	$19\frac{1}{2} \times 15$	45	0	0	Gunter	

7 c/m & 9 c/m are the lenses specially made for Cinematograph work.

The cost of pairing two Collinears for Stereoscopic Work is 8/-.

Send for Full List to 12, Charterhouse St., Holborn Circus, London, E.C.



Speed Trials in Southampton Water.

Photo by M. Dixon & Co., 15, Newgate St., E.C.
Taken with Collinear Lens, Series II.



Photo by C. Hofman, Esq.
Taken with Voigtländer $\frac{1}{4}$ -pl. Film & Plate Camera, & Voigtländer Collinear Lens, Series III.

Voigtlander

ESTABLISHED 1756 *& Sohn AG*

Collinear SERIES III. Full Aperture.

5½ cm. to 18 cm., F 6·8.
20 „ „ 58 „ F 7·7.

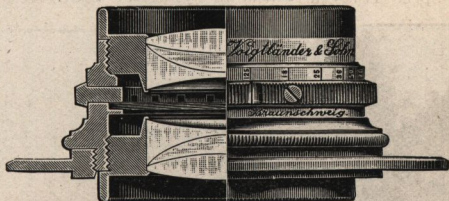
Equivalent Focus.		Diameter of Lens.	Size of Plate sharply covered.		Ordinary Mount.		Code Word.	Countersunk Mount.		Focussing Mount.			
			At Full Aperture.	Stopped Down.				Price.	Code Word.	Price.	Code Word.		
c/m	ins.	m/m	ins.	ins.	£	s.	d.	£	s.	d.	£	s.	d.
5½	2½	9	1½ × 1½	3¼ × 3¼	4	0	0	Habana
7	2½	11	1½ × 2½	3¼ × 4	4	0	0	Hadramaut	4 5 0	Hanna	4 15 0	..	Name
9	3½	14	2½ × 3½	4¼ × 3¼	4	5	0	Hagar	4 10 0	Hebe	5 0 0	..	Narbo
12	4½	18	4¼ × 3½	6½ × 5	5	0	0	Hakon	5 5 0	Hedwig	5 15 0	..	Nathan
13½	5½	20	4½ × 3½	7 × 5½	5	10	0	Halde	5 15 0	Hegar	6 5 0	..	Natter
15	6	23	6½ × 4½	8 × 6	6	0	0	Halma	6 5 0	Helga	6 15 0	..	Neckar
18	7½	27	7½ × 5	9 × 7	7	5	0	Hassan	7 10 0	Helm	8 0 0	..	Nelda
20	8	27	8½ × 6½	10 × 8	8	0	0	Hatto	8 5 0	Heliodor	8 15 0	..	Nenner
25	10	34	9 × 7	12 × 10	10	0	0	Hella
31	12	40	12 × 10	14 × 12	14	0	0	Hestia
37	14½	47	14 × 10	16 × 13	18	0	0	Honduras
44	17½	57	15 × 12	20 × 15	23	0	0	Horus
52	20½	67	18 × 12	20 × 18	30	0	0	Hulda
58	23	76	20 × 14	24 × 20	42	0	0	Hutten

Cost of pairing 2 Collinears for Stereoscopic Work is 8/-

SERIES IV.

Full Aperture,

F 12·5.

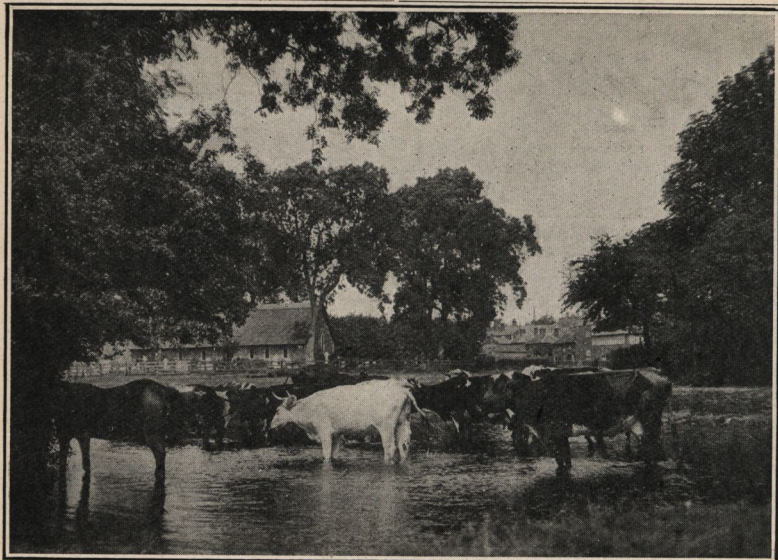


Wide-Angle Anastigmat for Architectural, Process Work, and Landscapes.

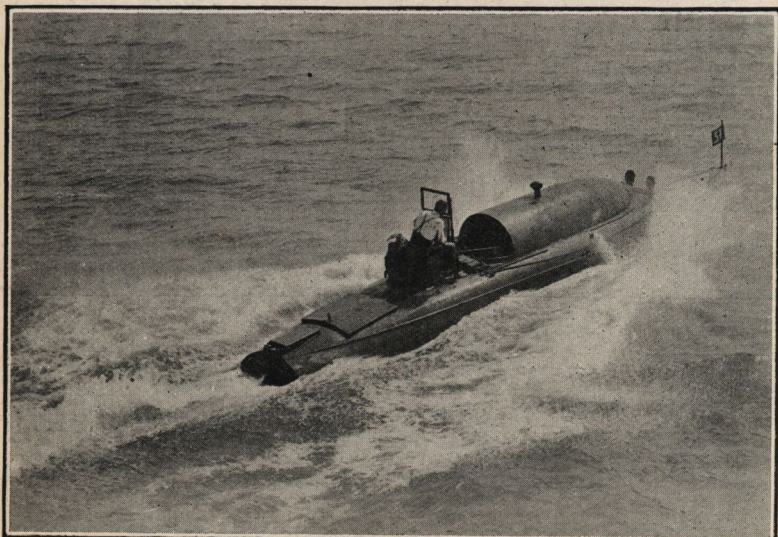
The wide-angle Collinears give, with full aperture, a field of view of about 85°. When stopped down 95°.

Equivalent Focus.		Diameter of Lens.	Size of Plate Sharply Covered.		Price.			Code Word.
			F 12 5.	Stopped Down				
c/m	ins.	m/m	ins.	ins.	£	s.	d.	
10	4	8	4½ × 3½	6½ × 4½	4	0	0	Kabale
12	4½	10	5 × 4	7½ × 5	5	0	0	Kabul
15	6	12	6½ × 4½	8½ × 6½	5	10	0	Kallias
20	8	16	8½ × 6½	10 × 8	6	0	0	Kandahar
25	9¾	21	9 × 7	12 × 10	9	0	0	Kaste
32	12½	26	10 × 8	10¾ × 13¾	12	0	0	Kondor
44	17½	35	12 × 10	15 × 12	20	0	0	Konon
58	22¾	46	15 × 12	24 × 18	30	0	0	Korfu
80	31½	65	16 × 14	28 × 22	45	0	0	Kuno

Send for Full List to 12, Charterhouse St., Holborn Circus, London, E.C.



Taken with Collinear Lens, Series III., 18 cm. *Photo by F. R. Hatch, Esq.*



International Trophy Race at Southampton. Brooke I. at full speed.
Taken with a Collinear Lens, Series II. *Photo by M. Dixon & Co., 15, Newgate St., E.C.*

Voigtländer

ESTABLISHED 1756 & Sohn A.G.

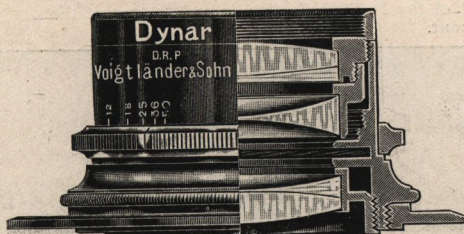
"Dynar" Lens.

A **New Rapid Objective F 6**, adapted for all requirements of up-to-date Photography.

The **"Dynar" Lens** is constructed of hard colourless Jena glass, noted for its great light transmitting power, uniformity of definition, and brilliancy of its pictures. It consists of three separate lenses so arranged as to obtain extreme rapidity, and is excellently adapted for the most rapid instantaneous exposures out of doors. We particularly recommend it for Hand Camera work, on account of its light weight.

The **"Dynar Lens"** requires only to be known to be appreciated.

A SUPERB
LENS
GIVING



NEGATIVES
OF GREAT
EXCELLENCE

"Dynar" F 6.

The covering power of the **"Dynar,"** combined with its great sharpness of definition, is wonderful, and owing to its scientific construction the illumination is equally sharp on the extreme edges as in the centre of the plate, the angle of image is also very large, as the following Table indicates.

Equivalent Focus.	Diameter of Lens.		Size of Plates sharply covered with full aperture.		Ordinary Mount.	Code Word.	Countersunk Mount.		Focussing Mount.	
							Price.	Code Word.	Price.	Code Word.
c/m	ins.	m/m	ins.	ins.	£ s. d.		£ s. d.	£ s. d.	£ s. d.	
12	4 3/4	21	4 3/8 x 3 3/4	6 1/2 x 4 3/8	3 15 0	Dyn	4 0 0	Dynein	4 10 0	Dynarch
13 1/2	5 1/2	24 5/8	5 1/8 x 4	7 3/8 x 5 1/8	4 5 0	Dyro	4 10 0	Dyrocin	5 0 0	Dyroarch
15	6	26	6 x 4 1/4	8 x 6	4 15 0	Dysis	5 0 0	Dyisein	5 10 0	Dysisarch
18	7 1/4	32	6 3/4 x 4 3/4	9 x 7	6 0 0	Dytes	6 5 0	Dytsein	6 15 0	Dytesarch

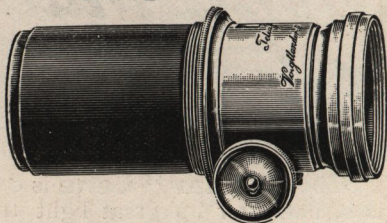
The cost of pairing two "Dynars" for Stereoscopic Work is 8/-.

Send for Full List to 12, Charterhouse St., Holborn Circus, London, E.C.

Voigtländer Telephotographic Lenses.

Send for Supplementary List.

Special Lenses and Cameras for
Telephotography.



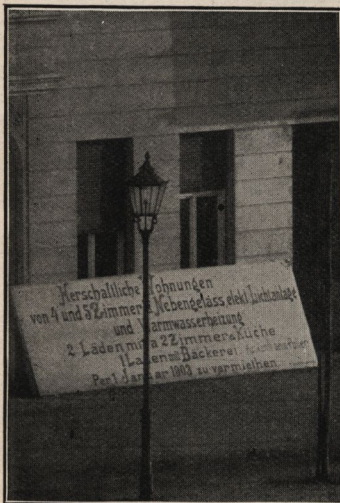
Every degree of magnification may be obtained, according to the distance the Lens is placed from the plate. The image is from three to four times as large as that obtained by an ordinary Lens of the same focus as the Camera extension. An image ten to twelve times larger than that of the Positive Lens alone, can be obtained sharply defined.

The Telephotographic Lens is recognised as forming an essential part of the Photographer's outfit, as it gives him—within certain limits—a considerable range of foci to make the subject as large as he chooses.

PRICES.—The cost of complete Telephoto Lenses may be found by adding the cost of the Positive Lens selected to that of the Telephoto Attachment.

TELEPHOTO ATTACHMENT.

No.	Price
1	£3 10 0
2	4 0 0
3	4 5 0
4	4 15 0
5	5 10 0



Reduced from $\frac{1}{2}$ -Plate.

Negatives by R. F. Foster, Esq.

TAKEN WITH VOIGTLÄNDER COLLINEAR,
SERIES III., No. 4, AND VOIGTLÄNDER

TAKEN WITH VOIGTLÄNDER COLLINEAR,
SERIES III. No. 4.

TELEPHOTO ATTACHMENT, No. 4.

Note the position of lamp post in both views, which proves conclusively that the Camera was not shifted in the slightest degree.

Send for Full List to 12, Charterhouse St., Holborn Circus, London, E.C.

VOIGTLÄNDER'S Portrait Euryscope Lenses

SERIES III. Full Aperture F 4.5.

Portrait Euryscope Series III. Focus.		Diam. of Lens.	Size.	Price.	Code Word.	Price of a Set of Waterhouse Diaphragms.
c/m	ins.	m/m		£ s. d.		£ s. d.
17	6 $\frac{3}{4}$	40	C.D.V,	4 10 0	Cadmus	13 0
20	7 $\frac{3}{4}$	46	,,	5 10 0	Catalonien	14 0
22	8 $\frac{1}{2}$	53	,,	7 0 0	Catania	15 0
28	11	66	Cabinet	10 0 0	Ceder	17 0
35	13 $\frac{3}{4}$	79	,,	14 0 0	Centaur	19 0
40	16	92	Cab. & Boudoir	20 0 0	Certosa	1 2 0
51	20	105	,,	26 0 0	Cimon	1 7 0
66	26	135	{ Boudoir, Imperial, &c. }	47 10 0	Cybele	1 14 0

All these Lenses are supplied with a set of Waterhouse Diaphragms.

Universal Euryscope Lens

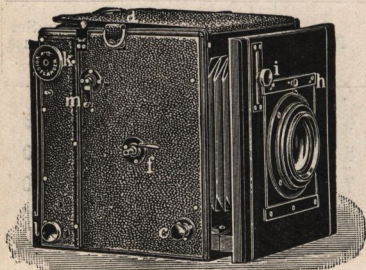
SERIES IVa. Full Aperture F 7.

Euryscope. Series IVa. Focus.		Diameter of Lens.	Size of Plate covered: Stopped Down.	Price.	Code Word.
c/m	ins.	m/m	ins.		
15	5 $\frac{3}{4}$	22	3 $\frac{1}{2}$ × 4 $\frac{3}{4}$	£3 10 0	Dingo
18	7 $\frac{1}{8}$	27	4 $\frac{3}{4}$ × 6 $\frac{1}{2}$	4 4 0	Divan
20	7 $\frac{3}{4}$	30	7 $\frac{1}{2}$ × 5	4 16 0	Dolman
25	9 $\frac{3}{4}$	38	6 $\frac{1}{2}$ × 8 $\frac{1}{2}$	5 12 0	Dolus
30	11 $\frac{3}{4}$	46	9 × 7	6 18 0	Domina
36	14 $\frac{1}{4}$	55	10 × 8	8 12 0	Dorn
43	17	67	12 × 10	11 12 0	Duenna
50	19 $\frac{1}{2}$	77	14 × 11	16 10 0	Despina
66	26	104	15 × 12	26 0 0	Dessin
87	34 $\frac{1}{4}$	137	20 × 16	50 0 0	Dina

Send for Full List to 12, Charterhouse St., Holborn Circus, London, E.C.

VOIGTLÄNDER'S HELIAR REFLEX CAMERA,

With Heliar Lens, **F 4.5 complete.**



This is the most perfect type of Hand Camera. It is of superior construction, and is fitted with a Rack and Pinion Movement working on all the four corners of the front, ensuring rigidity when extended. The Mirror is of Optically Worked Glass, silvered on the surface, and coated with a colorless preparation for preservation. The image reflected is therefore identical with that obtained upon the plate. This arrangement permits the photographer to observe the image up to the moment of exposure. The Camera is fitted with a Focal Plane Shutter, giving time and instantaneous exposures up to $\frac{1}{1000}$ of a second; and is guaranteed to work without vibration. The Camera is also fitted with a reversible back as shown in illustration.

Dimensions when closed, $7 \times 7 \times 6\frac{1}{2}$ ins. Weight with Lens, 5 lbs.

Camera $\frac{1}{4}$ -plate, with 3 double dark slides, and Heliar Lens 18 c/m, $7\frac{1}{8}$ in. Focus F 4.5.

£20 - 0 - 0

Solid Leather Case, 25s.

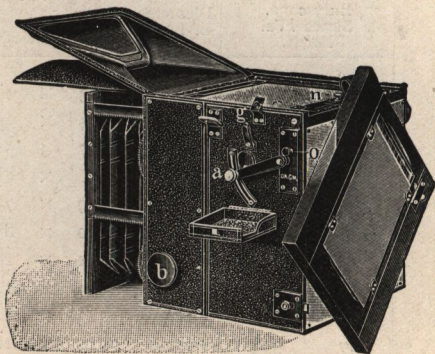
Telephoto Attachment for above, **£3 10s.**

Similar Camera, $\frac{1}{2}$ -plate size, with Heliar Lens, **£30.**

Extra dark slides, **15/- each.**

Leather Sling Case for Camera and 3 dark slides, **30/-**

Ditto and 6 dark slides, **35/-**



REVERSING BACK.

Send for Full List to 12, Charterhouse St., Holborn Circus, London, E.C.

Voigtlander HELIAR CAMERA.

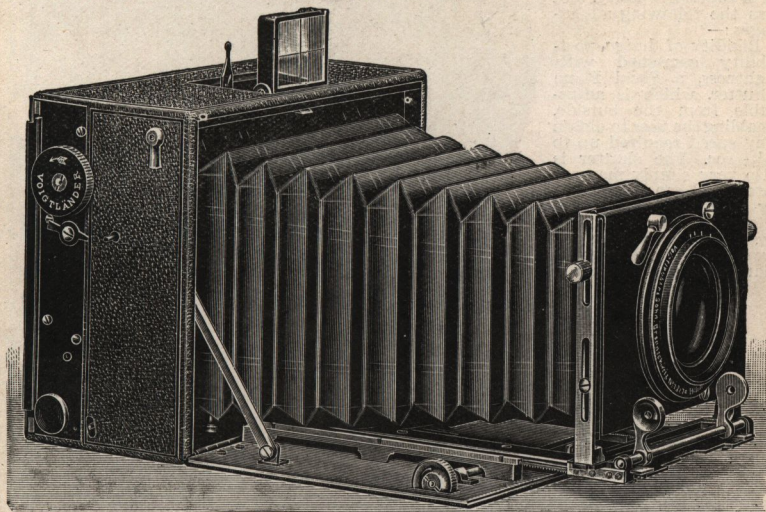
ESTABLISHED 1756 & Sohn AG

$\frac{1}{4}$ -Plate, or 9×12 c/m Continental size only.

This Camera is constructed of Light Metal similar to the Voigtlander Metal Folding Camera, and for high-class workmanship and mechanical ingenuity is unsurpassable. The Heliar Camera is fitted with a Focal Plane Shutter of similar construction as in the Folding Camera. The Lens generally supplied with this Camera is an 18 c/m Heliar $7\frac{1}{2}$ ins. focus. This Lens has already made a great name for itself in the Photographic world, working at a full aperture of F 4.5. It is suitable for all the requirements of general Photography, and is the best of all modern Lenses.

The Camera is fitted with Rack and Pinion Focussing movement with extension to $11\frac{1}{2}$ ins., enabling Lenses of various Focal lengths to be used.

A Lens Shutter can be fitted to this Camera in addition to the Focal Plane if desired enabling the user to obtain a greater variety of exposure.



PRICES.

With Voigtlander Lens in Countersunk Mount.	Camera with 3 Double Dark Slides, Solid Form with Folding Wood Shutters.	Camera with 3 Double Dark Slides, fitted with extractable Ebonite Shutters or Book Form with Folding Wood Shutters.
Heliar 18 c/m, $7\frac{1}{2}$ ins., F 4.5	£14 15 0	£15 5 0
Collinear II. 15 c/m, F 5.4	13 10 0	14 0 0

Telephoto Attachment to above Camera, £3 10s.

Dimensions when closed, $6\frac{3}{4} \times 5 \times 3$ ins.

Weight, without Lens, 2 lbs. 15 ozs.

Leather Case for Camera, 3 Dark Slides, 15/-

" " " " " " 18/-

Special leather-covered Aluminium Telescopic Tripod, 25/-.

Send for Full List to 12, Charterhouse St., Holborn Circus, London, E.C.

Voigtländer Metal Folding Camera.

**$\frac{1}{4}$ -Plate, or 9 x 12 c/m
Continental Size
only.**

This Camera is constructed of metal, and is specially recommended for use in hot and damp climates; it combines lightness with the greatest durability. It is of superior quality, and has the following advantages:—

Rigidity of design, portability combined with lightness, a Focal Plane Shutter, which is adjustable from the outside, enabling the user to obtain any speed required up to $\frac{1}{1000}$ sec. The shutter is also very simply manipulated, and can be worked by either pneumatic or trigger release. The Camera is fitted with rising and cross front, which may be clamped in any position.

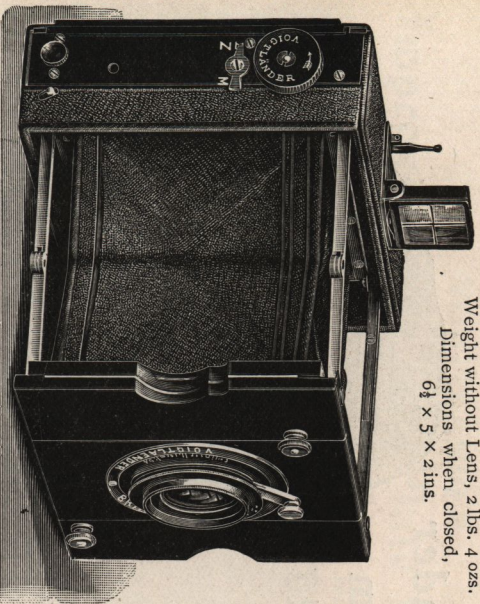


SUPPLEMENTARY LIST

JUST PUBLISHED.

Send for Full List to 12, Charterhouse St., Holborn Circus, London, E.C.

Weight without Lens, 2 lbs. 4 ozs.
Dimensions when closed,
 $6\frac{1}{2} \times 5 \times 2$ ins.



Fitted with Voigtlander Lens in Focussing Mount.	With 3 Double Dark Slides.
Collinear Lens II., 13 $\frac{1}{4}$ c/m, F5.4 aperture	£13 0 0
Collinear Lens III., 12 c/m, F6.8 aperture	11 15 0
Dynar Lens 12 c/m = 4 $\frac{3}{4}$ ins., F6. aperture	10 10 0
Dynar Lens 15 c/m = 6 ins., F6. aperture	11 10 0

Price of Telephoto Attachment to this Camera, £3.
Special leather-covered Aluminium Telescopic Tripod, 25/-.

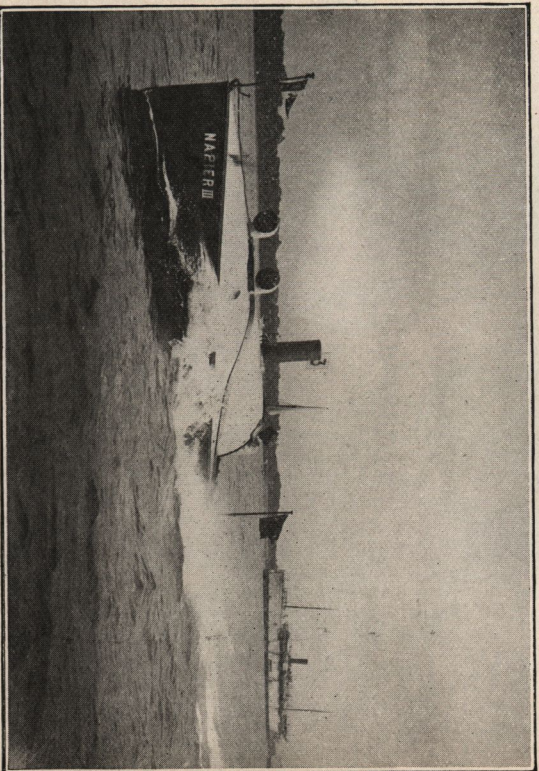


Photo by M. Dixon & Co., 15, Newgate St., E.C.

Motor Boat travelling at full speed.

Taken with a Voigtlander Collinear Lens, Series II.

Send for Full List to 12, Charterhouse St., Holborn Circus, London, E.C.

Voigtländer Roll-Film and Plate Camera.

*

With Collinear
or
Dynar Lens.



Supplementary List
Just Published.

Send for Full List to 12, Charterhouse St., Holborn Circus, London, E.C.

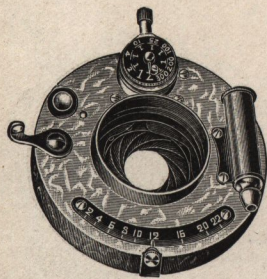
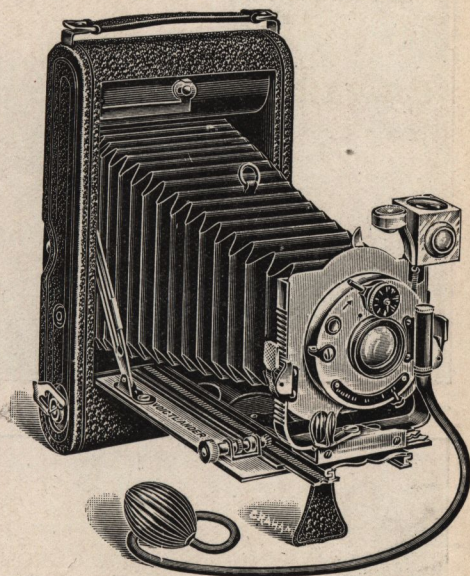
VOIGTLÄNDER

Improved Film and Plate Camera.

(DAYLIGHT LOADING.)

 $4\frac{1}{2} \times 3\frac{1}{2}$ in. $\frac{1}{4}$ -Plate, Postcard Size, $5\frac{1}{2} \times 3\frac{1}{2}$ in. and 5×4 in.

This Camera is extremely portable, and has been constructed to meet the demand for a High-class Folding Camera suitable for all the requirements of up-to-date Photography. The body is constructed of mahogany and aluminium, covered with black leather, with nickel fittings, superior leather bellows, double extension rack and pinion movement, enabling the back combination of the Lens to be used when desired; rising and cross front for vertical and horizontal pictures; view finder and spirit level Focussing scales for both films and plates are fixed to the baseboard. The Lens is a Collinear, which is a perfect anastigmat and unequalled for brilliancy of definition; each combination is an anastigmat in itself, and can be used separately.



KOILLOS SHUTTER.

- $\frac{1}{4}$ -Plate Camera, fitted with Collinear Lens, Series III., 12 c/m, F 6.8, and Bausch and Lomb Automatic (ever set) Shutter.. .. £9 0 0
- Ditto, fitted with "Koilos" Sector Shutter, speeds up to $\frac{1}{300}$ Second £9 10 0
- Postcard Size Camera, fitted with Collinear Lens, Series III., 15 c/m, F 6.8, in "Koilos" Shutter £11 8 0
- 5 in. \times 4 in. size ditto, Collinear III., 13 $\frac{1}{2}$ c/m. £11 0 0
- Similar Camera, Single Extension, fitted with Dynar Lens, F 6, 12 c/m, in "Koilos" Shutter £7 15 0

These prices include 3 single metal dark slides and focussing screen, fitted with hood cover, in case. Black or Brown Solid Leather Slings Case, with lock and key, for carrying Camera, 7/6.

Special leather-covered Aluminium Telescopic Tripod, 25/-.

Send for Full List to 12, Charterhouse St., Holborn Circus, London, E.C.



Photo by C. Hofman, Esq.

Taken with Voigtländer $\frac{1}{4}$ -pl. Film & Plate Camera, & Voigtländer Collinear Lens, Series III



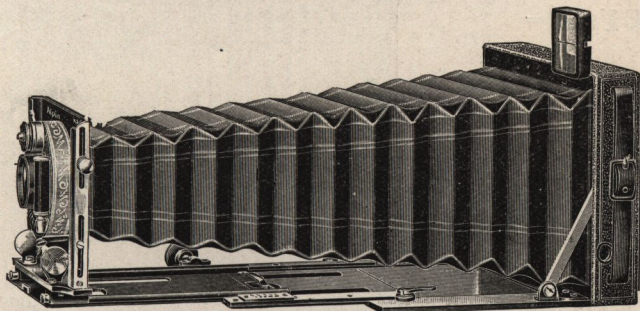
Photo by C. Hofman, Esq.

Taken with back combination of Collinear Lens, Series III., using the double extension of Camera. from the **same standpoint** as above picture

The Voigtländer Alpine Camera,

$\frac{1}{4}$ -Plate, or 9×12 c/m.

FOR PLATES OR FILM PACK.

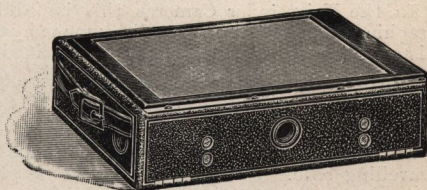


Especially suitable for use in Tropical Climates.

This Camera is entirely constructed of LIGHT METAL, and is fitted with a Collinear Lens, Series III., 12 cm., F6·8, in Koilos Shutter with Hinged View Finder. It weighs 1 lb. 11 ozs.

In consequence of the very long triple extension, work can be done with the Back Combination of the Collinear Lens. Focussing is done by means of a rack and pinion movement, with scale affixed on the left. The objective can be adjusted in vertical or horizontal direction.

The measurements of the apparatus are $5\frac{3}{4} \times 4\frac{3}{8} \times 1\frac{1}{2}$ inches.



CAMERA CLOSED.

PRICES.

	£	s.	d.	Code Word.
With Collinear Lens, Series III., 12 cm., in Koilos Shutter, 6 Single Dark Slides, and Focussing Screen	9	0	0	<i>Alpinhakon</i>
Ditto with Collinear III. $13\frac{1}{2}$ cm.	9	10	0	<i>Alpinhalde</i>
Ditto with Dynar 12 cm.	7	15	0	<i>Alpindyn</i>
Film Pack Holder, $\frac{1}{4}$ -Plate	7	6		<i>Alpinpack</i>
Single Dark Slides each	1	6		<i>Alpinas</i>
Solid Leather Case for the Alpine Camera, with 6 Slides	10	6		<i>Alpintasche</i>

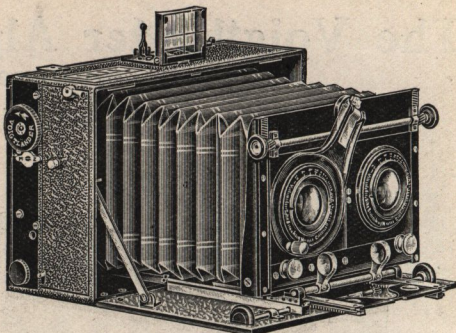
(This cancels Alpine Camera, page 101, General List.)

The extreme portability of this apparatus enables it to be carried in the pocket.

Special leather-covered Aluminium Telescopic Tripod, 25/-.

Send for Full List to 12, Charterhouse St., Holborn Circus, London, E.C.

Voigtländer Stereo- Panoramic Camera.



Specially Designed for Tropical Climates.

In many respects the design of the Stereo-Panoram Camera corresponds to the Heliar Camera (see page 98 of our General List). It is made throughout of a light aluminium alloy, and is fitted with two Collinear lenses of exactly the same focus, viz., 12 cm. The axis of these two lenses lies at a distance of 70 mm.

It is absolutely essential for perfect Stereoscopic Photography that the apparatus is of proper construction, and equality in distance from the object lens and from the eye is maintained.

In the Voigtländer Cameras this is fulfilled, and accordingly false photographic reproduction of actualities made by an apparatus with greater objective distance (viewed stereoscopically) is avoided.

In consequence of the long extension of the camera, stereoscopic pictures can be taken not only with the double objectives, but also with the Back Combinations—of 21 cm. focal length.

In both cases focussing is done by using the scale on the left of the travelling base.

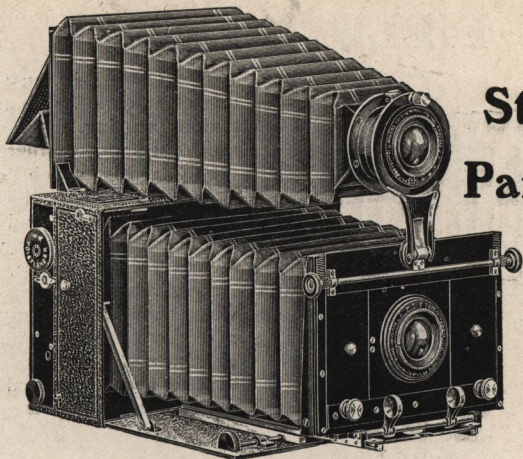
The value of this Camera is—it is important to note—immeasurably increased, because POSTCARD or PANORAMIC PHOTOGRAPHS $3\frac{1}{2} \times 5\frac{1}{2}$ ins, 9×14 cm. in size, may be taken WITH THE COMPLETE LENS OR WITH THE BACK COMBINATION ONLY.

For the purposes of Panoramic or Postcard pictures the right hand objective is unscrewed, and the metal revolving mount is turned up into a vertical position at the top; the left hand lens is then pushed into the centre, and the two additional lens panels are placed on each side of the lens, thus completing the front of Camera. The stereoscopic partition should then be adjusted by moving same to the right hand side of Camera; to do this remove focussing screen. When these few easy manipulations have been done, $3\frac{1}{2} \times 5\frac{1}{2}$ inches, 9×14 cm., panoramic photos may be taken.

Another feature of this Camera is that it may be transformed into a Twin Lens Camera by using the following apparatus which is supplied with each instrument, consisting of a separate Leather Bellows, with focussing screen and attachment for fixing.

Send for Full List to 12, Charterhouse St., Holborn Circus, London, E.C.

VOIGTLÄNDER



Stereo-Panoram.

By fixing this finder on the Camera, a second Camera, resting on a large one (note illustration) is obtained, *in which the picture can be observed BEFORE and DURING EXPOSURE*. This is an exceedingly novel and interesting addition, and gives to the Stereo-Panoram Metal Camera the character of a universal apparatus. One of its chief features is the size of the plates, the proportions of which are more popular than those of the usual $\frac{1}{4}$ -plate or 9×12 cm. size.

The Voigtlander Stereo-Panoram Camera is fitted with a Focal Plane Shutter, with the name Voigtlander on the winder, and an arrow pointing in the direction in which it should be wound.

This Shutter is of similar construction to that of the Folding and Heliar Cameras. Consequently *the most rapid of instantaneous exposures can be made with the picture under observation*.

We wish specially to draw attention to the fact that $3\frac{1}{2} \times 5\frac{1}{2}$ inches or 9×14 cm. plates can be procured without difficulty from all the business houses where photographic requisites are sold.

Price of the Voigtlander Stereo-panoramic Metal Camera :

Fitted with 2 Voigtlander Objectives in Countersunk Mounts.	With 3 Double Dark Slides, Solid Form with extractable Vulcanite Shutters, or Book Form with folding Wood Shutters.	Code Word for Camera with 3 Double Dark Slides fitted with extractable Vulcanite Shutters.	Code Word for Camera with 3 Double Dark Slides, Book Form with folding Wood Shutters.
Collinear II. 12 cm, F 5'4.	£ s. d. 21 0 0	Stereonikol	Stereoanfrickol

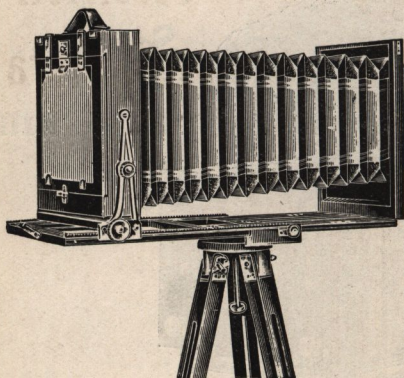
Extra dark slides, $3\frac{1}{2} \times 5\frac{1}{2}$ inches, 9×14 cm., 15/-. Code word for the wooden slide, "*Mittelholz*"; for the ebonite slide, "*Mittelgummi*."

Leather Case for Camera and 3 double dark slides, 15/-. Code word, "*Stereotasche*." Ditto for Camera and 6 double dark slides, 18/-. Code word "*Stereoleder*."

Special leather-covered Aluminium Telescopic Tripod, 25/-.

Send for Full List to 12, Charterhouse St., Holborn Circus, London, E.C.

FIELD CAMERA.



Model I.

This Camera is square. The extension is done by double rack and pinion focussing, one screw actuating the front and the other the back of the Camera, which enables the Camera to be always balanced on its stand. Lightness and Portability has not been secured by weakening any part of the Camera, but by eliminating brass and wood from places where they served no useful purpose, and in consequence great rigidity is guaranteed. The Camera is made of the finest seasoned Mahogany, with polished and lacquered brass bindings.

Model I.

English. ins.	Size. Continental. c/m.	Length of Extension. ins.	Price, with 3 double dark slides. £ s. d.	Price of 1 double dark slide. £ s. d.
$4\frac{3}{4} \times 6\frac{1}{2}$	13×18	$16\frac{1}{2}$	4 15 0	0 13 0
$6\frac{1}{2} \times 8\frac{1}{2}$	18×24	24	6 1 0	0 16 0
10×12	24×30	32	8 10 0	0 19 0
Model II.				
$6\frac{1}{2} \times 4\frac{3}{4}$	13×18	24	9 10 0	1 0 0
$8\frac{1}{2} \times 6\frac{1}{2}$	18×24	32	11 10 0	1 5 0
12×10	24×30	40	14 15 0	1 12 0
16×12	30×40	48	21 0 0	2 0 0

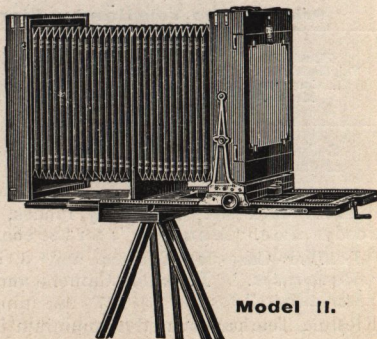
The two first sizes are fitted with Stereoscopic division.

Model II. Triple Extension. Front extended by Rack and Pinion, and the back by a Screw.

Specially Brass Bound, for Use in Hot Climates.

The rack and pinion motion, fitted for racking out the front, is so arranged that when extended the Camera is always balanced on its stand.

$6\frac{1}{2} \times 4\frac{3}{4}$ ins. and $8\frac{1}{2} \times 6\frac{1}{2}$ ins. sizes, with Stereoscopic Division, if desired.



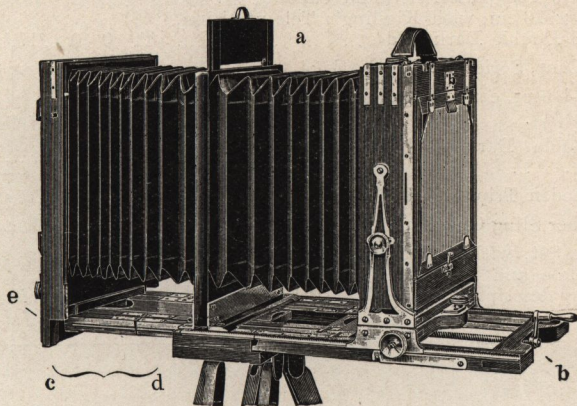
Model II.

Send for Full List to 12, Charterhouse St., Holborn Circus, London, E.C.

Voigtländer Tele-partition Stand Camera

ESTABLISHED 1756 & Sohn A.G.

$\frac{1}{2}$ -Plate, or 13 × 18 cm.



With Kiesling's Tele-partition.

Having recognized the increasing importance of Tele-photography, we, as the foregoing pages show, have resolved to do what we can towards the perfecting of the required apparatus.

We believe that in our new Stand Camera, $\frac{1}{2}$ -plate or 18 × 13 cm., we have constructed an apparatus particularly suited for the purpose, and which gains in importance chiefly through the introduction of the *Kiesling Tele-partition*.

As is well known, by the introduction of this system the ordinary tele-tube becomes superfluous, as the tele-negative lenses are inserted in the partition wall of the camera. The elimination of all reflection is the great point of superiority in this arrangement.

Both extensions, that of the objective board as well as of the matt-disc part, are carried out from the back, the first with a spindle, the second by rack and pinion.

In consequence of the 57 cm. (22½ inches) long extension, the enlarging power is extraordinarily great.

As a suitable object lens, our Collinear II., 20 cm., F 5.4 is specially recommended (see page 69, General List, for prices and full particulars).

Further, we would recommend our TELE-LENS SETS, consisting of the 4 Tele-negatives—33, 51, 67, 97 mm.—which should be screwed into the Kiesling Tele-partition (see page 80, General List).

Send for Full List to 12, Charterhouse St., Holborn Circus, London, E.C.

This Camera is made of teak wood, metal bound, with horizontal and vertical double swing back, and can be strongly recommended for use abroad.

Size of Camera $10\frac{1}{2} \times 8\frac{1}{4} \times 3\frac{3}{4}$ inches, weight 6 lbs.

The weight of one slide is 8 oz.

PRICES.

	£	s.	d.	Code Word.
Voigtländer's Tele-partition Stand Camera, $\frac{1}{2}$ -Plate or 13 × 18 cm, with Kiesling's Tele-partition, and 3 Double Dark Slides	11	0	0	<i>Telekamera</i>
Collinear Lens, Series II., 20 cm. F 5.4	9	0	0	<i>Gemma</i>
Set of Tele-lenses, consisting of the 4 Tele-negatives, mounted	8	0	0	<i>Telenegativsatz</i>
Extra Double Dark Slides, $\frac{1}{2}$ -Plate or 13 × 18 cm. each	1	0	0	<i>Telekassette</i>
Strong Wooden Tripod Stand	1	10	0	<i>Telestativ</i>
Solid Leather Sling Case, for Camera and 3 Slides ..	1	10	0	<i>Teletasche</i>
The Whole Set, with 3 Dark Slides, forms a most complete and interesting apparatus, suitable for any description of work. Price, complete	32	0	0	<i>Telecomp</i>



Taken with Collinear Lens, Series II.

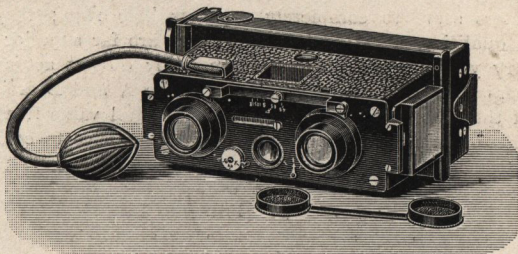
Photo by M. Dixon & Co., 15, Newgate St., E.C.

Send for Full List to **VOIGTLÄNDER & SOHN, A.G.**, 12, Charterhouse St., Holborn Circus, London, E.C.

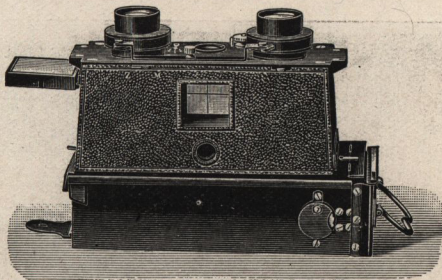
Established 1756.

The "STEREOPHOTOSCOPE."

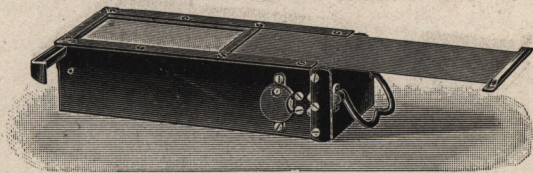
Fitted with VOIGTLÄNDER "HELIAR" LENSES.



The "**Stereophotoscope**" will produce the most perfect Stereoscopic pictures upon plates $4\frac{1}{4} \times 1\frac{3}{4}$ ins. The body is constructed from one piece of metal, and it is, therefore, most suitable for warm or damp climates.



The Magazine Changing Box carries 12 plates. Stereophotos when viewed through the special size Stereoscope are magnified and appear as large as the ordinary size Stereoscopic Views. The whole apparatus is of the very highest class workmanship.



"Stereophotoscope," with two Voigtländer "Heliar" Lenses,	
F 4.5 Aperture, correctly paired, Two View Finders, Changing	
Box. and Leather Sling Case, complete ...	£20 - 0 - 0
Extra Changing Box for 12 Plates	3 - 10 - 0

Send for Full List to 12, Charterhouse St., Holborn Circus, London, E.C.

Voigtländer Contrast Filters.

THESE Filters serve to completely suppress blue rays; they are made in three qualities, A, B, and Orange; they are far superior in efficiency to the ordinary yellow glass screens, which really do not act as filters, but only as dampers over the entire spectrum. The A and B are used for the suppression of the blue rays, the Orange to obtain full value from orange and red tones. These Filters are for use with plates sensitive to colours.

PRICES.

3 cm. diameter,	12/-	Fitting to Lens,	2/-
4 " "	13/-	" "	2/-
5 " "	15/-	" "	2/-
7 " "	20/-	" "	3/-
9 " "	28/-	" "	4/-

For full particulars see General List.



Photo by Dr. H. Harting.

Taken with Collinear Lens, Series III, 18 cm., and Voigtländer Contrast Filter B.

**Send for Full List to F. G. PHILLIPS, Sole Agent, 12, Charterhouse St.,
Holborn Circus, London, E.C.**