

PREMO CAMERAS

Premo Cameras and The Premo Film Pack

WITH the coming of the outdoor season, you will combine the pleasures of picture-making with the good times in the open.

In selecting a Premo camera, you provide the utmost simplicity of design and construction, combined with ease and quickness of operation.

There are several models of Premos, each having exclusive features—from the cameras designed especially for the youngsters to the models that are equipped with every adjustment required in advanced picture-making, and every camera conforms to Eastman manufacturing standards.

The Premo film pack system of daylight loading, unloading and changing the exposed film provides advantages helpful for the beginner as well as the experienced in photography. Just open the back, drop in a pack, and the camera is ready. Then quickly draw a paper tab after each exposure.

It is possible to but briefly describe all the Premo advantages in this little booklet. Your dealer will be glad to supply you with the Premo catalogue covering the entire Premo line, and at the same time, you can learn how easy it is to make pictures with Premo cameras and the Premo Film Pack.

Eastman Kodak Company

Rochester Optical Department ROCHESTER, N. Y.

Premo Junior



THIS camera is always ready for immediate use. No focusing or estimating of distances is required. Open the back, drop in the pack, draw the safety cover, and the camera is ready for the first exposure.

This simplicity of operation recommends the camera to anyone desiring a reliable camera of the fixed focus type.

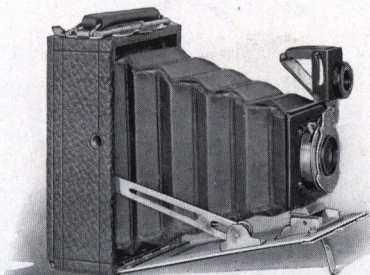
DETAILS Capacity: 12 exposures without reloading. Size of Camera: No. 1, $3\frac{1}{8} \times 4\frac{1}{2} \times 5\frac{1}{2}$ in.; No. 1A, $3\frac{1}{2} \times 5\frac{1}{2} \times 5\frac{1}{2}$ in.; Weight: No. 1, 11 ozs.; No. 1A, 14 ozs.; Shutters: Rotary Automatic, with diaphragm stops. Lens: No. 1, Meniscus; Nos. 1A, Meniscus Achromatic. Finders: two. Tripod Sockets: two.

PRICES

	No. 1 $2\frac{1}{4} \times 3\frac{1}{4}$	No. 1A $2\frac{1}{2} \times 4\frac{1}{4}$
Premo Junior, as per details	\$3.32	\$4.63
Carrying Case	1.60	1.80
Premo Film Pack (12 exposures)50	.60
Kodak Portrait Attachment75	.75

The Prices of Camera and Film Include the Excise War Tax

Premoette Junior



THIS camera loads quickly in daylight with a $2\frac{1}{4} \times 3\frac{1}{4}$ Premo Film Pack, containing twelve exposures. After the folding bed is dropped, there is but one simple focusing adjustment.

The carefully tested lens fitted to the Premoette Jr. produces negatives of such good quality that enlargements many times larger than the contact prints may be made.

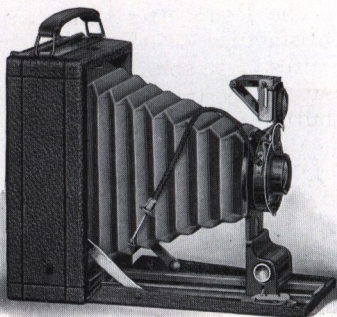
DETAILS Dimensions: $1\frac{1}{2} \times 3 \times 4\frac{3}{4}$ in. Weight: 12 ozs. Finder: collapsible, reversible, brilliant. Body: Aluminum. Tripod Sockets: two.

PRICES

	No. 1 $2\frac{1}{4} \times 3\frac{1}{4}$
Premoette Jr. with Meniscus Achromatic Lens and No. 0 Kodak Ball Bearing Shutter.....	\$10.26
With R. R. Lens.....	12.60
With Kodak Anastigmat Lens, <i>f</i> .7.7, No. 1 B. B. Shutter.....	19.24
Sole Leather Carrying Case.....	2.60
Premo Film Pack (12 exposures).....	.50
Kodak Portrait Attachment.....	.75

The Prices of Camera and Film Include the Excise War Tax

Premoette Senior



THIS model provides three popular picture sizes combined with a choice of standard lens equipments; the most simple and rapid daylight loading principle—the Premo Film Pack—and low cost.

The Premoette Senior is supplied with either Rapid Rectilinear lens or Kodak Anastigmat $f.7.7$. While pictures of excellent quality are produced with the R. R. lens, the advantages of the anastigmat, other than its greater speed, are well known and more than balance the slight difference in cost between the two lenses. The Kodak Anastigmat $f.7.7$ is the equal of any anastigmat lens made in qualities of definition, depth and covering power.

All lens and shutter adjustments are simple in the extreme for making pictures under average conditions of amateur photography. The Premoette Senior will prove highly satisfactory to those who wish to make pictures of persons, objects and events throughout the year.

The shutter is the Kodak Ball Bearing with time and bulb actions and retarded speed of $1/25$, $1/50$ and $1/100$ seconds. It works with either cable or finger release and is unusually accurate and reliable.

The Premoette Senior loads very quickly in any light; just open the back of the camera, drop in the Premo Film Pack, close the back, draw the safety cover, and the first film is in position for exposure. The exposed film is changed by drawing consecutively numbered tabs.

Premoette Seniors are covered with genuine leather of selected grain, metal parts are finished in nickel and black lacquer. When fitted with Kodak Portrait Attachment the pleasing proportions of the pictures make these cameras excellent for home portraiture.

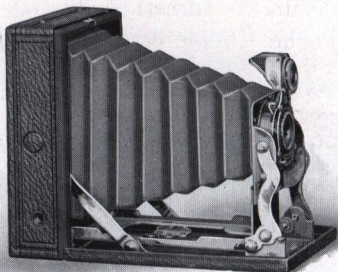
DETAILS Capacity: 12 exposures. Box: seasoned wood. Bed and Back: aluminum. Dimensions: $2\frac{1}{2} \times 4\frac{1}{2}$, $1\frac{1}{2} \times 3\frac{3}{8} \times 5\frac{3}{8}$ in.; $3\frac{1}{2} \times 4\frac{1}{2}$, $1\frac{5}{8} \times 4\frac{1}{8} \times 5\frac{3}{8}$ in.; 3A, $3\frac{1}{2} \times 5\frac{1}{2}$, $2\frac{1}{4} \times 4\frac{1}{2} \times 7\frac{1}{8}$ in. Weight: $2\frac{1}{2} \times 4\frac{1}{2}$, 21 ozs.; $3\frac{1}{2} \times 4\frac{1}{2}$, 22 ozs.; 3A, $3\frac{1}{2} \times 5\frac{1}{2}$, 35 ozs. Lens: Rapid Rectilinear. Shutter: Kodak Ball Bearing. Tripod Sockets: two. Finder: reversible brilliant, collapsible. Automatic standard clamp. Automatic focusing lock.

PRICES

	$2\frac{1}{2} \times 4\frac{1}{2}$	$3\frac{1}{2} \times 4\frac{1}{2}$	3A $3\frac{1}{2} \times 5\frac{1}{2}$
Premoette Sr. with R. R. Lens and Ball Bearing Shutter.....	\$16.77	\$16.77	\$21.13
With Kodak Anastigmat Lens, <i>f.7.7</i>	22.28	22.28	26.15
Sole Leather Carrying Case.....	4.00	4.00	5.25
Premo Film Pack (12 exposures)...	.60	.90	1.10
Kodak Portrait Attachment.....	.75	.75	.75

The Prices of Camera and Film Include the Excise War Tax

Pocket Premo



HANDY as a purse, easy to load, easy to use, briefly describes the attractive features of this little camera.

The Pocket Premo makes $2\frac{1}{4} \times 3\frac{1}{4}$ pictures, yet is only $1\frac{1}{4}$ inches in thickness, $3\frac{1}{4}$ inches wide and but a little over 4 inches long—small enough to be conveniently carried in a side pocket.

With one movement the front standard, bearing the lens and shutter, automatically unfolds and is extended and locked rigidly in focusing position when the bed of the camera is drawn down. Focusing and estimating a distance is not necessary. Because the Pocket Premo may be brought into action so very quickly, many unusual and interesting pictures may be secured that would be lost if adjustment of focus were necessary.

The camera is closed by pressing the two side arms and raising the bed, which causes the bellows and entire front to compactly refold within the camera body.

The Pocket Premo loads in daylight with Premo Film Packs—just insert a pack, pull out a paper tab, and you are ready—the simplest of all loading devices. The back is extended to receive the Premo Film Pack and closes compactly when the Pack is removed. Development of the exposed films is greatly simplified for those wishing to do their own work, by the use of the Premo Film Pack Tank.

The meniscus achromatic lens fitted to the camera is of excellent quality and carefully adjusted. The pictures it makes are clear and sharp, and enlargements many times larger than the contact prints may be made from the negatives.

Shutter speeds of 1/25 and 1/50 of a second as well as bulb and time exposures are provided for with the Kodak Ball Bearing Shutter described on page 20.

Covered with a fine quality of grain leather and all metal parts heavily finished in nickel, the Pocket Premo is very attractive as well as a thoroughly practical pocket camera.

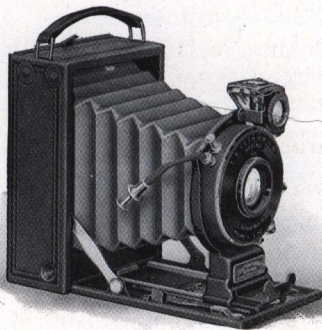
DETAILS Capacity: 12 exposures without reloading. Size of picture: $2\frac{1}{4} \times 3\frac{1}{4}$. Dimensions: $1\frac{1}{4} \times 3\frac{1}{4} \times 4\frac{9}{16}$. Weight: 18 ozs. Shutter, Kodak Ball Bearing. Lens: Meniscus Achromatic. Finder: Collapsible. Tripod Sockets: two.

PRICES

	$2\frac{1}{4} \times 3\frac{1}{4}$
Pocket Premo, as per details.....	\$13.85
Carrying Case to hold camera and Premo Film Pack.....	1.60
Premo Film Pack (12 exposures).....	.50
Kodak Portrait Attachment.....	.75

The Prices of Camera and Film Include the Excise War Tax

Premo No. 12



MANY essential features for successful picture making under greatly varied conditions of both lighting and subject are provided with this model.

The instantaneous shutter speeds range from $1/5$ to $1/300$ of a second, according to the equipment selected, and there are adjustments for bulb and time exposures. The pictures are $2\frac{1}{4} \times 3\frac{1}{4}$ inches, made upon Eastman Cartridge Film or Premo Film Packs, but when the subject calls for the use of any one of the various brands of plates the camera is equally suitable.

Eastman Film quality and convenience plus the greatest simplicity and rapidity in daylight loading and film changing, are provided with the Premo Film Pack and

Premo Adapter. A special Roll Holder permits the use of Eastman Graflex Film with the Premo No. 12.

The Premo No. 12 is regularly supplied with the Kodak Anastigmat *f.7.7* lens, or Rapid Rectilinear lens, mounted in Kodak Ball Bearing Shutter.

The Anastigmat Lens and Optimo shutter equipment, permit a wide range in speed, and it is possible to make pictures under varied conditions of light and movement of subject which would be difficult to procure with the average equipment.

The Premo No. 12 is covered with a fine quality of grain leather handsomely embossed, and all metal parts are finished in nickel and black enamel.

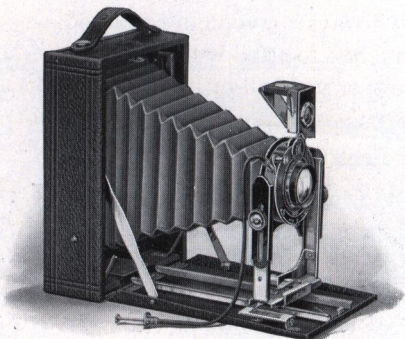
DETAILS Size of picture: $2\frac{1}{2} \times 3\frac{1}{4}$. Capacity: 12 film or one plate exposure. Box: aluminum. Bed: aluminum, with special lever focusing device. Finder: reversible, with revolving mask. Tripod sockets: two. Dimensions: $1\frac{1}{2} \times 3\frac{1}{4} \times 4\frac{1}{2}$ in. Weight: 24 ozs.

PRICES

	$2\frac{1}{2} \times 3\frac{1}{4}$
Premo No. 12 with Kodak Ball Bearing Shutter and R.R. Lens, including Film Pack Adapter and Plate Holder	\$23.55
With Kodak Anastigmat Lens, <i>f.7.7</i> , and B. B. Shutter	28.78
With Optimo Shutter and Kodak Anastigmat Lens, <i>f.6.3</i> , $4\frac{1}{2}$ -inch focus	51.92
With B. & L. Kodak Anastigmat Lens, <i>f. 6.3</i> , $4\frac{1}{2}$ -inch focus	65.17
With B. & L. Tessar, Ser. IIb Lens, <i>f.6.3</i> , $4\frac{1}{2}$ -inch focus	80.24
With B. & L. Tessar, Ser. Ic Lens, <i>f.4.5</i> , $3\frac{1}{2}$ -inch focus	82.36
Carrying Case, velvet lined	5.00
Single Plate Holder, each75
Premo Film Pack, 12 exposures50
Special Roll Holder, interchangeable with Plate Holder	13.50

The Prices of Camera and Film Include the Excise War Tax

Premo No. 8



FILM or Plates, whichever is most convenient or best suited to the character of the subject, can be used interchangeably with this camera.

The Premo Film Pack Adapter, loaded with a Premo Film Pack, and used just like a plate holder, converts this camera into a daylight loading instrument, with all the advantages of film quality and convenience. Any of the brands of plates, including the Rapid Graflex Plate, which are helpful when making pictures in poor light, are loaded into the regular Premo Plate Holder.

Every picture can be accurately focused and composed upon the ground glass focusing screen in the camera back—the rising and falling front serving to adjust the

amount of sky and foreground required in the picture. Direct focusing in full picture size is not always convenient or possible, and the lens is then focused with the graduated scale and either vertical or horizontal pictures are centered with the brilliant view finder.

The Kodak Ball Bearing Shutter is graduated for speeds of $1/25$, $1/50$ and $1/100$ of a second, as well as bulb and time exposures.

At a slight additional cost, the $3\frac{1}{4} \times 5\frac{1}{2}$ Premo No. 8 is furnished with the Kodak Anastigmat $f.7.7$ lens, providing greater speed and excellent definition.

The body of the camera is made of wood, with front bed of aluminum. The bed and body are covered with black grain leather; the bellows is black and the metal parts are finished in nickel, giving the camera a neat, attractive appearance.

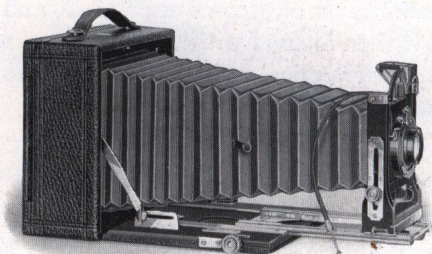
DETAILS Capacity: 12 film or 2 plate exposures. Box: wood, covered with leather. Standard: metal, with rising and falling front Carrying Case: Imitation leather, with compartments for holders. Finder: Reversible, brilliant, collapsible. Tripod Sockets: Two. Lens: Rapid Rectilinear, Shutter: Kodak Ball Bearing with cable release (See page 20). Dimensions: $3\frac{1}{4} \times 5\frac{1}{2}$, $2 \times 5 \times 7\frac{1}{4}$ in.; 4×5 , $2 \times 5\frac{1}{4} \times 6\frac{1}{2}$ in.; 5×7 , $2\frac{1}{4} \times 6\frac{1}{2} \times 8\frac{1}{2}$ in. Weight: $3\frac{1}{4} \times 5\frac{1}{2}$, 34 ozs.; 4×5 , 30 ozs.; 5×7 , 42 ozs.

PRICES

	4 x 5	3A $3\frac{1}{4} \times 5\frac{1}{2}$	5 x 7
Premo No. 8, with Planatograph Lens, Kodak Ball Bearing Shutter, Carrying Case and Plate Holder.	\$25.25	\$25.25	\$36.30
With Kodak Anastigmat Lens, $f.7.7$		30.27	
Premo Film Pack Adapter.....	2.00	2.00	3.00
Premo Plate Holders, each.....	1.50	1.50	1.75
Premo Film Pack (12 exposures)..	1.10	1.10	1.90
Kodak Portrait Attachment.....	.75	.75	.75

The Prices of Camera and Film Include the Excise War Tax

Premo No. 9



THIS camera is suitable for copying and for work with long focus lenses, as well as the everyday uses of photography.

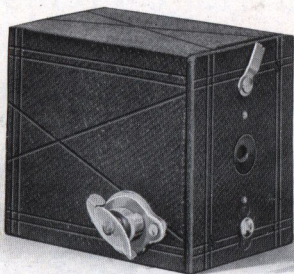
DETAILS Capacity: 12 film or 2 plate exposures. Box: wood, leather covered. Bed: finished in black; rack and pinion for focusing. Back: reversible and swing. Standard: metal with rising and falling front. Finder: brilliant, reversible, collapsible. Tripod Socket: one Bellows: Black leather; draw, $3\frac{1}{4} \times 5\frac{1}{2}$, 13 in.; 4 x 5, 13 in.; 5 x 7, $15\frac{1}{4}$ in. Dimensions; $3\frac{1}{4} \times 5\frac{1}{2}$, 3 x 7 x 7 in.; 4 x 5, 3 x 7 x 7 in.; 5 x 7, $2\frac{1}{8} \times 8\frac{1}{4} \times 8\frac{1}{4}$ in. Weight: $3\frac{1}{4} \times 5\frac{1}{2}$, 63 ozs.; 4 x 5, 63 ozs.; 5 x 7, 76 ozs.

PRICES

	4x5	3A $3\frac{1}{4} \times 5\frac{1}{2}$	5x7
Premo No. 9, with Planatograph Lens, Kodak Ball Bearing Shutter, Case and Holder.....	\$47.28	\$47.28	\$59.32
With Kodak Anastigmat Lens, f.7.7	52.23	52.23	
With Kodak Anastigmat Lens, f.6.3, and Optimo Shutter.....	79.79	79.79	
With B. & L. Kodak Anastigmat Lens f.6.3 and Optimo Shutter...	No.3 91.32	No.4 95.96	No.5 126.69
Premo Film Pack Adapter.....	2.00	2.00	3.00
Premo plate holders, each.....	1.50	1.50	1.75
Premo Film Pack (12 exposures)...	1.10	1.10	1.90
Kodak Portrait Attachment.....	.75	.75	.75

The Prices of Camera and Film Include the Excise War Tax

Cartridge Premo No. 00



A WELL made little camera fitted with an excellent meniscus lens and automatic shutter, which is adjustable for "snap shots" or time exposures. It loads in daylight with a special six exposure film cartridge, and while not N. C. film, it is of standard Eastman quality. The pictures are $1\frac{1}{4} \times 1\frac{3}{4}$ inches.

A camera designed especially for the use of boys and girls, and made upon such a simple principle it is easy to make good pictures from the start.

DETAILS Capacity: 6 exposures without reloading. Size of camera: $2 \times 2\frac{1}{8} \times 3\frac{1}{8}$ in. Lens: Meniscus, $2\frac{1}{4}$ -inch focus. Shutter: Automatic for time and snap shot exposure.

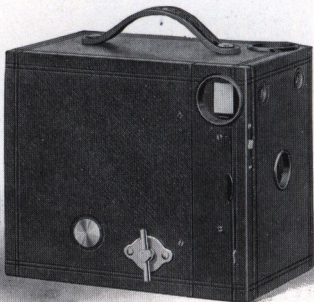
PRICES

Cartridge Premo No. 00, as per detail.....	\$1.36
Eastman Film Cartridge, 6 exposures, No. 35.....	.15

The Prices of Camera and Film Include the Excise War Tax

Sept. 1, 1920 Wat

Nos. 2 and 2A Cartridge Premos



THESE are cameras of the fixed focus type, requiring no focusing or estimating of distances. They take regular Eastman N. C. film cartridges, which may be loaded, unloaded and developed in daylight with the Kodak Film Tank.

The cameras are equipped with automatic shutters, working for time or "snap shot" exposures, and carefully tested lenses.

DETAILS Size of picture No. 2, $2\frac{1}{4} \times 3\frac{1}{4}$ in.; No. 2A, $2\frac{1}{2} \times 4\frac{1}{4}$ in. Capacity: No. 2, 6 exposures without reloading; No. 2A, 12 exposures without reloading. Size of camera: No. 2, $5\frac{1}{8} \times 4 \times 3\frac{1}{4}$ in.; No. 2A, $3\frac{7}{8} \times 5\frac{1}{8} \times 6\frac{1}{8}$ in. Weight: No. 2, 13 ozs.; No. 2A, 21 ozs. Lens: No. 2, Meniscus; No. 2A, Meniscus Achromatic. Shutter: Eastman Rotary, with three stops. Two finders.

PRICES

	No. 2	No. 2A
Cartridge Premo, as per details.....	\$3.33	\$4.58
Carrying Case, with shoulder strap.....	1.60	1.90
N. C. Film Cartridge, 12 exposures (No. 116)		.60
Ditto, 6 exposures (No. 120 for No. 2; No. 116 for No. 2A).....	.25	.30
Kodak Portrait Attachment.....	.75	.75

The Prices of Camera and Film Include the Excise War Tax

No. 2C Cartridge Premo



FITTED with a single lens of standard excellence, and an automatic shutter, the camera is always ready for instant use, as no focusing or estimating of distances is required. The 2C Model is similar to the 2 and 2A sizes, and likewise uses Eastman Cartridge Film.

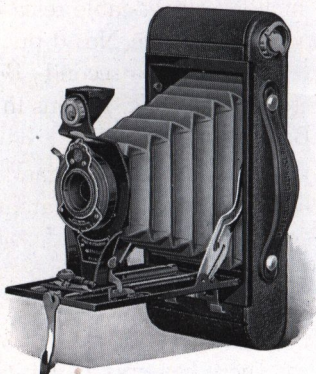
DETAILS Size of picture $2\frac{1}{8} \times 4\frac{1}{8}$ in. Capacity: 10 exposures without reloading. Size of camera: $3\frac{1}{8} \times 6 \times 7\frac{1}{4}$ in. Weight: 25 ozs. Lens, Meniscus Achromatic, $5\frac{1}{2}$ -inch focus. Shutter: Eastman Rotary, with three stops. Two finders. Two Tripod sockets.

PRICES

No. 2C Cartridge Premo, Meniscus Achromatic Lens, Eastman Rotary Shutter.....	\$5.97
Carrying Case with shoulder strap.....	2.00
N. C. Film Cartridge, 10 exposures (No. 130).....	.75
Ditto, 6 exposures.....	.45
Kodak Portrait Attachment.....	.75

The Prices of Camera and Film Include the Excise War Tax

Nos. 2 and 2A Folding Cartridge Premos



THESE cameras are made on a very simple principle for loading and unloading in daylight with Eastman N. C. Film Cartridges, and they will appeal to those desiring a practical, compact, inexpensive camera that will meet the requirements of amateur picture making.

The 2 and 2A models differ in the size of the pictures they make, and slightly in lens and shutter equipment. The No. 2 is regularly fitted with a meniscus achromatic lens and a No. 0 Kodak Ball Bearing Shutter. This shutter may be adjusted for time and bulb exposures, and instantaneous speeds of $1/25$ and $1/50$ of a second. It has

no cable release. The No. 2A is regularly fitted with a meniscus achromatic lens mounted in a No. 1 Kodak Ball Bearing Shutter which is *without* cable release. This shutter operates like the No. 0 but has the faster speed of 1/100 of a second. Both sizes are also furnished with R. R. lens in the No. 1 Kodak Ball Bearing shutter.

The lenses fitted to these cameras are of such excellent quality that the amateur can easily make enlargements from favorite negatives, with the Brownie Enlarging Camera or Kodak Enlarging Camera.

Fitted with a Kodak Portrait Attachment, either one of these cameras can be brought close up to the subject for home portraits.

The cameras are neatly finished and covered with a serviceable imitation leather. Either size will slip easily into an ordinary pocket.

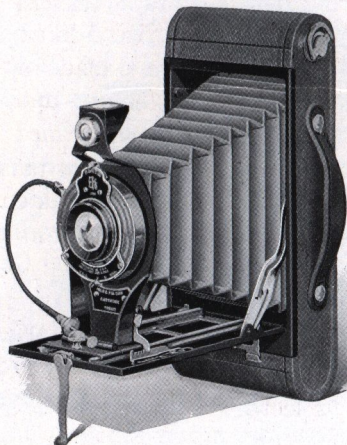
DETAILS Size of picture, No. 2 for $2\frac{1}{4} \times 3\frac{1}{4}$ pictures; No. 2A, $2\frac{1}{2} \times 4\frac{1}{4}$. Capacity: No. 2, 6 exposures without reloading; No. 2A, 12. Size of camera: No. 2, $1\frac{1}{4} \times 3\frac{1}{8} \times 6\frac{1}{2}$ in.; 2A, $1\frac{7}{16} \times 3\frac{3}{8} \times 7\frac{1}{8}$ in. Weight: No. 2, 19 ozs.; No. 2A, 25 ozs. Lens, Meniscus Achromatic. Shutter: Kodak Ball Bearing. Finder: Reversible. Tripod Sockets: two. Focusing lock: Automatic. Bellows: Black leather. Body: Steel.

PRICES

	No. 2	No. 2A
Folding Cartridge Premo, Meniscus Achromatic Lens.....	\$ 9.20	\$10.26
With R. R. Lens.....	11.02	12.67
Cartridge Premo Carrying Case.....	1.90	2.00
N. C. Film Cartridge, 12 exposures (No. 116)		.60
Ditto, 6 exposures (No. 120 for No. 2, No. 116 for No. 2A).....	.25	.30
Kodak Portrait Attachment75	.75

The Prices of Camera and Film Include the Excise War Tax

Nos. 2C and 3A Folding Cartridge Premos



THERE is assurance of quality results, with Folding Cartridge Premos, and every process—loading, unloading and development of the film—can be done in daylight, entirely eliminating the dark room.

These cameras load with standard Eastman N. C. Film Cartridges and development of film by the time and temperature method, in a Kodak Film Tank, also means better negatives and better pictures.

Both sizes are supplied fitted with a single Meniscus Achromatic or Rapid Rectilinear

lens, mounted in a No. 1 Kodak Ball Bearing Shutter. The shutter operates at speeds of 1/25, 1/50 and 1/100 of a second as well as bulb and time exposures.

The body of the camera is made of aluminum, which means strength and light weight. The standard is so formed as to be unusually rigid, and all metal parts are finished in polished nickel and black enamel. The cover is a substantial grade of imitation leather. The finder is reversible, and two tripod sockets are provided for prolonged exposures. The automatic focusing lock permits the lens to be instantly and securely set at any selected distance.

DETAILS Size of picture, No. 2C, $2\frac{7}{8} \times 4\frac{7}{8}$ in.; No. 3A, $3\frac{1}{4} \times 5\frac{1}{2}$ in. Capacity: 10 exposures without reloading. Size of camera: No. 2C, $1\frac{3}{4} \times 3\frac{3}{16} \times 8\frac{3}{8}$ in.; No. 3A, $1\frac{3}{4} \times 4\frac{1}{16} \times 9\frac{5}{16}$ in. Weight: No. 2C, 28 ozs.; No. 3A, 28 ozs. Lens Meniscus Achromatic; focus, No. 2C, 5-inch; No. 3A, $5\frac{3}{8}$ -inch: Also supplied with Rapid Rectilinear Lens, if desired. Shutter: Kodak Ball Bearing. Finder: Reversible. Tripod Sockets: two. Focusing Lock: Automatic. Bellows: Black leather. Body: Steel.

PRICES

	No. 2C	No. 3A
Folding Cartridge Premo, Meniscus Achromatic Lens.....	\$14.15	\$15.81
Ditto, with R. R. Lens.....	16.83	19.17
Cartridge Premo, Carrying Case.....	2.10	2.20
N. C. Film Cartridge, 10 exposures (No. 130 for No. 2C, No. 122 for 3A)75	.90
Ditto, 6 exposures.....	.45	.55
Kodak Portrait Attachment.....	.75	.75

The Prices of Camera and Film Include the Excise War Tax

Kodak B. B. Shutter

THIS shutter does not require setting. It is automatically operated by cable or finger release. The illustration shows the shutter as fitted to cameras equipped with Kodak Anastigmat lens, *f*.7.7, but all models work upon the same general system. The No. 0 model regularly fitted to Premoette Jr. with single or R.R. lens: Pocket Premo; and Folding Cartridge Premo No. 2, has time and bulb actions and indicated speeds of 1/25 and 1/50 second, but no cable release.



The No. 1 model supplied with Folding Cartridge Premos No. 2A, 2C, 3A, Premoette Senior, Premo Nos. 8 and 9 operates at 1/25, 1/50 and 1/100 of a second and has cable release in all cases excepting as fitted to 2A Folding Cartridge Premo, where it has finger release only.

Optimo Shutter



This shutter is of the setting type, the leaves opening in star shape, and besides time and bulb exposure actions, has variable indicated speeds of 1, 1/2, 1/5, 1/25, 1/50, 1/100, 1/200 and 1/300 seconds.

Premo Film Packs



EACH pack contains twelve exposures of Eastman N. C. film. The packs snugly fit the backs of the various models of Premo Film Packs camera. To load, just open the back, drop in a pack and draw the safety cover protecting the first film. After each exposure, draw a numbered tab to change film. It is the easiest and quickest camera loading and film changing method.

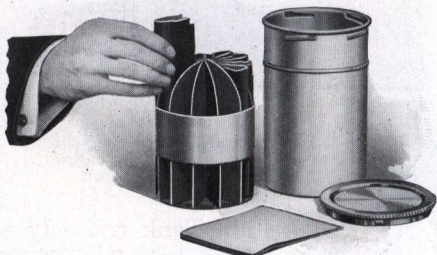
Exposed films can be removed from the pack for development at any time.

Plate cameras are converted into daylight loading film cameras with the Premo Film Pack and Premo Film Pack Adapter.

Size	No.	Per Pack
1 3/4 x 2 3/8	300	\$.30
2 1/4 x 3 1/4	320	.50
2 1/2 x 4 1/4	316	.60
3 1/4 x 4 1/4	318	.90
3 x 5 1/2	342	1.00
3 1/4 x 5 1/2	322	1.10
4 x 5	323	1.10
5 x 7	315	1.90

The Prices of Premo Film Packs Include the Excise War Tax

Premo Film Pack Tank



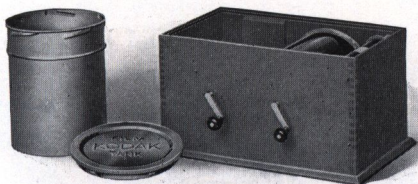
THE modern method of development greatly simplifies negative making for anyone wishing to do their own work. But more important still, it makes better negatives, which lead directly to better pictures.

Considerable thought and care are usually exercised in making pictures, and to the pleasure of picture making can be added the pleasure of perfect negative making, with the use of the Premo Film Pack Tank.

PRICES

Premo Film Pack Tank No. 1, for 12 $1\frac{3}{4}$ x $2\frac{3}{8}$ or $2\frac{1}{4}$ x $3\frac{1}{4}$ films.....	\$1.75
Ditto, No. 2, for 12 $2\frac{1}{2}$ x $4\frac{1}{4}$, $3\frac{1}{4}$ x $4\frac{1}{4}$, 3 x $5\frac{1}{4}$, $3\frac{1}{4}$ x $5\frac{1}{2}$ or 4 x 5 films.....	4.00
Ditto, No. 3, 6 5 x 7 films.....	4.50
Premo Tank Developing Powders, in packages of 6, No. 1.....	.25
Premo Tank Developing Powders, in packages of 6, No. 2.....	.35
Premo Tank Developing Powders, in packages of 6, No. 3.....	.50
Kodak Acid Fixing Powder, per 1 pound package.....	.35
Ditto, per $\frac{1}{2}$ pound package.....	.20
Ditto, per $\frac{1}{4}$ pound package.....	.15

Kodak Film Tank



THE Kodak Film Tank not only develops roll film automatically but it does it in broad daylight, eliminating the necessity for a dark room during any part of the photographic process. The time and temperature method of development is not only the most convenient, but is superior to the old methods.

In this darkened chamber the exposed film is wound into a light proof apron. The apron is then placed in the metal cup, filled with a standard developer, at a certain temperature, and allowed to remain 20 minutes.

PRICES

Brownie Kodak Film Tank, for use with No. 2 and No. 2 Folding Cartridge Premo cartridges, complete....	\$4.00
2½-inch Kodak Film Tank, for use with all cartridges having a film width of 2½ inches or less, complete.....	5.00
3½-inch Kodak Film Tank, for use with all Kodak and Brownie cartridges having a film width of 3½ inches or less, complete.....	6.00
Flexible Rubber Tray, for 3½-inch Kodak Film Tank..	2.50
Kodak Tank Developer Powders for Brownie Kodak Film Tank, per package ½ dozen.....	.20
Ditto, for 2½-inch tank, per package, ½ dozen.....	.25
Ditto, for 3½-inch tank, per package, ½ dozen.....	.25

The Kodak Metal Tripod

LIGHT in weight, compact and exceptionally rigid. An ideal tripod for cameras up to 5 x 7.

The Nos. 1 and 2 have revolving heads, permitting the required adjustment of the camera without moving the tripod.

No.	Section	Closed	Length Extended	Weight	Price
0	3	15½ in.	39½ in.	15 ozs.	\$3.50
1	4	15 in.	48½ in.	24½ ozs.	5.25
1C	4	15¼ in.	48⅞ in.	25½ ozs.	4.75
2	5	13½ in.	49½ in.	25 ozs.	6.00
2C	5	13¾ in.	49⅞ in.	26 ozs.	5.50
6	6	11¾ in.	40 in.	24 ozs.	7.50
Leatherette Case for No. 0 or No. 1.....					1.35
Leather Carrying case for No. 0, 1, of 2.....					3.75
Leather Carrying Case for No. 6.....					4.50
Rubber tips for use indoors, for any size, per set of three					.10

The Premo Film Pack Adapter

Converts a plate camera into a Film Camera. Loads with Premo Film Packs, and is used just like a plate holder.

Size	Price	Size	Price
2¼ x 3¼.....	\$1.50	3A (3¼ x 5½).....	\$2.00
3¼ x 4¼.....	1.50	4 x 5.....	2.00
3 x 5¼.....	2.00	5 x 7.....	3.00

IMPORTANT

Owing to unsettled conditions all prices are subject to change without notice.

Eastman Kodak

Rochester Optical Depart