
Houghtons,

Ltd.

*The Largest Manufacturers of
Cameras and Photographic
Apparatus in the Kingdom.*

Head Offices :

**88-89, HIGH HOLBORN,
LONDON, W.C.**

TELEGRAMS : "BROMIDE," LONDON.

TELEPHONES : 2500 Holborn. (4 lines.)

Glasgow Branch :

**70-78, YORK STREET,
GLASGOW.**

TELEGRAMS : "HOUGHTONS," GLASGOW.

TELEPHONES : 1309 ARGYLE & 4666 CORPORATION.

Optical Warehouse :—95, HATTON GARDEN, E.C.

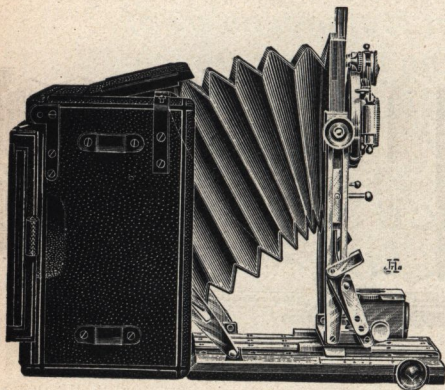
***Factories : Walthamstow
and Stoke Newington. . .***

HOUGHTONS, Ltd.

Manufacturers and Wholesalers.

The "Sanderson" Camera.

No really high-class hand camera has ever rivalled the world-wide popularity of the "Sanderson." It is the standard by which all other cameras are judged. It is, and always will be, "The Perfect Camera."



The "Sanderson" hand camera is provided with a range of movements and adjustments never before embodied in a single instrument, making it capable of performing the widest range of work. It is, however, in its main features simplicity itself, so that the merest novice in photography can use it with satisfaction. All the adjustments for special work are held in reserve, and except when actually required, need never be touched.

The "Sanderson" can be opened in a second or two for ordinary snapshot work, yet when any difficult subject is encountered, its universal swing and rising front, together with its falling baseboard, long extension and other well-known movements, are invaluable. It is the most popular camera in the world, for it will do everything. Write for the "Sanderson" booklet, post free.

Prices of the "Sanderson Regular."

No. 1. Complete with "Beck" convertible Double Aplanat Lens, F/7.7 Unicum Shutter, Brilliant Finder, Level and 3 double plate holders...	1-plate. 5 × 4	1-plate.	
No. 2A. Similar equipment with "Busch" Anastigmat Lens, Series II. F/5.5 ...	£ s. d.	£ s. d.	£ s. d.
No. 4. Similar equipment with Goerz "Dagor" Anastigmat Lens, Series III. F/6.8	6 10 0	7 10 0	10 10 0
No. 5. Similar equipment with "Cooke" Anastigmat Lens, Series III. F/6.5 ...	9 17 6	11 12 6	16 5 0
No. 10. Similar equipment with "Aldis" Anastigmat Lens, Series 2, F/6 ...	10 17 6	12 17 6	17 7 6
	10 7 6	11 12 6	16 2 6
	7 7 6	9 17 6	14 7 6

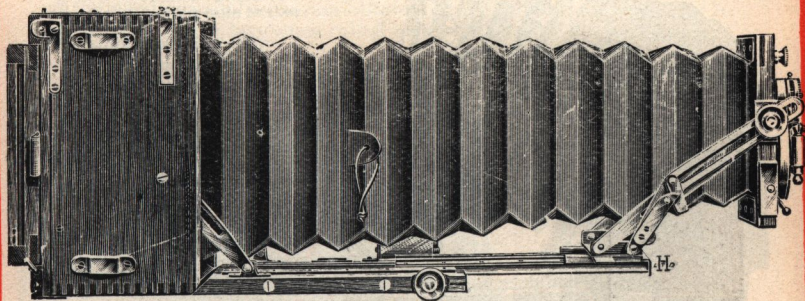
BRITISH MADE.

HOUGHTONS, Ltd.

Manufacturers and Wholesalers.

The "Tropical Sanderson."

This is a model of the celebrated "Sanderson" Camera, which is constructed of selected Teak, a wood recognised for its great damp and heat resisting qualities. The outside woodwork is polished instead of



being leather covered, for leather covering is sometimes liable to rot and peel when exposed to a damp atmosphere. The cameras are brass bound in all vital parts, and the bellows are specially attached with brass plates to the body of the camera. The "Tropical Sanderson" can be confidently recommended for export to India and the Colonies. It is essentially the traveller's camera, for nothing is sacrificed to appearance, and every practical point has been considered.

No. 1. Tropical Model Sanderson Hand Camera, complete with Beck Double Aplanat Lens, F/7.7, Unicum or Automat Shutter, Brilliant View Finder, Level, three Special Teak Double Plate Holders	$\frac{1}{4}$ -plate. 5 x 4 $\frac{1}{2}$ -plate.						
	<table><tr><td>£ s. d.</td><td>£ s. d.</td><td>£ s. d.</td></tr><tr><td>7 15 0</td><td>9 0 0</td><td>12 0 0</td></tr></table>	£ s. d.	£ s. d.	£ s. d.	7 15 0	9 0 0	12 0 0
£ s. d.	£ s. d.	£ s. d.					
7 15 0	9 0 0	12 0 0					

Any lens or shutter can be fitted to the "Tropical Sanderson." See price list. Houghton Film Envelope Adapters are specially made in teak for this model.

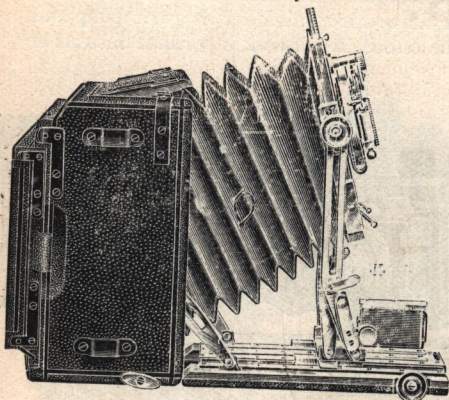
BRITISH MADE.

HOUGHTONS, Ltd.

Manufacturers and Wholesalers.

The "Sanderson De Luxe."

This wonderfully perfect model has been introduced for those who require an instrument of the most perfect finish and quality of workmanship it is possible to produce. The Body is different to the Regular Model, there is a new Back Focussing Rack and Pinion for wide angle work, a Rack and Pinion Rising and Falling front, a closed in Focussing Chamber, and a patent stop plate.



The Make and Finish of the "Sanderson De Luxe"

are of the very best, the wood-work being of well matured Spanish mahogany, specially selected for its soundness, richness of colour, and fine figuring. The cabinet work is faultless and the covering of the finest black Morocco leather. In short, the "Sanderson De Luxe" possesses all the characteristics of British workmanship, which for reliability, excellence of quality and substantiality, are of universal renown.

The "SANDERSON DE LUXE" costs £10 0 0 in the quarter-plate size. Ask for the Booklet giving particulars of all the various sizes and the cost of the De Luxe Models with different lenses.

Post Card Sanderson.

The Post Card "Sanderson," taking plates $5\frac{1}{2} \times 3\frac{1}{2}$, yields admirable upright pictures, and when used the long way gives a picture having all the panoramic advantages with none of its defects. A fairly long focus lens can be employed, and the proportions of the picture can be preserved without having to resort to the trimming knife. The Post Card "Sanderson" is not unduly large, and it has already been very much in demand among pictorial workers. What is perhaps an important point is that the $5\frac{1}{2} \times 3\frac{1}{2}$ plates only cost the same as the 5×4 size. The specification of the Post Card "Sanderson" is exactly the same as the Regular, the slight disparity in price being accounted for by the fact that the Post Card "Sanderson" has to be fitted with a $\frac{1}{2}$ -plate Lens and Shutter.

No. 1 Post Card Model "Sanderson" Hand Camera, complete with Beck Double Aplanat Lens, $F/7.7$, 9 in. focus
 7×5 Unicum or Automat Shutter Brilliant View Finder £ s. d.
 Level, and 3 double plate holders ... 9 0 0
 Camera with 3 plate holders, but without Lens and Shutter 6 17 6

BRITISH MADE.

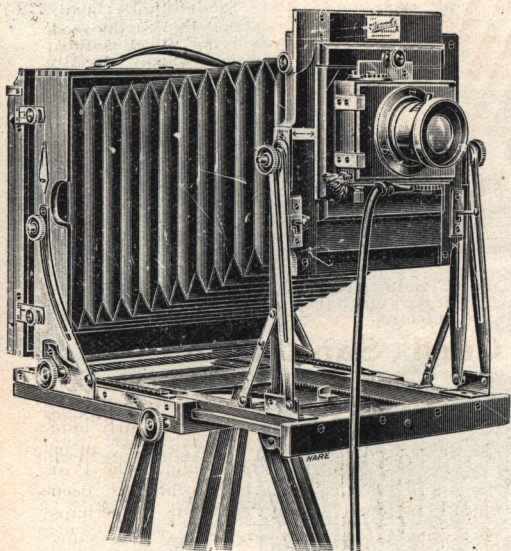
HOUGHTONS, Ltd.

Manufacturers and Wholesalers.

The Regular Popular "Sanderson."

The Regular Popular "Sanderson" is a field camera embodying all the celebrated "Sanderson" movements. A special feature of this camera is the great range of extension obtainable, the $\frac{1}{2}$ -plate size extending to 21 in., and yet the lens when raised may be set back to within $2\frac{3}{4}$ in. of

the focal plane without cutting off any portion of the image. Each camera is built with a cross front and rising lens board, and is constructed with the usual reversing frame attached to the new and improved body. The camera has the usual extended baseboard actuated by rack and pinion, and an additional rack and pinion for the back for wide angle work. Although produced at a popular price, these cameras are exceedingly well made and finished.



They are made in Teak and Mahogany. The price of the Teak model being rather above those quoted below:

$\frac{1}{2}$ -plate model, complete with lens, Thornton-Pickard Shutter,	£	s.	d.
one double dark slide and 3-fold ash tripod stand	...	5	10 0
Whole-plate model	...	8	0 0

Write for full particulars and "quotations for the Regular Popular "Sanderson," fitted with high-class anastigmat lenses.

A Special List of Field pattern "Sandersons" is published.

BRITISH MADE.

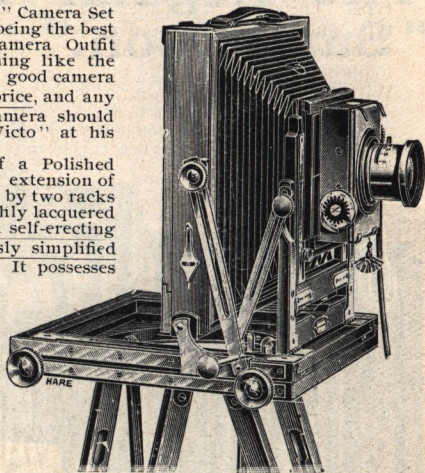
HOUGHTONS, Ltd.

Manufacturers and Wholesalers.

The "Victo" Camera Set.

The well-known "Triple Victo" Camera Set has maintained its reputation as being the best made and the cheapest Field Camera Outfit offered by any maker at anything like the price. It stands as an example of good camera making at a really reasonable price, and any amateur who wants a stand Camera should make a point of seeing the "Victo" at his dealers.

The "Victo" Outfit consists of a Polished Mahogany Camera with a Triple extension of 21 in. in the $\frac{1}{2}$ -plate size, actuated by two racks and pinions and finished with highly lacquered brass fittings. The Camera has a self-erecting swing front, which is enormously simplified and works quite automatically. It possesses extreme Rising, Falling and Cross Front Movements, rigid in any position, Wide Angle Movement, Double Swing Back, Reversing Frame and Truncated Leather Bellows, the Turn-table is beautifully finished, is quite flush with the base and has a Locking attachment. There is a Double Dark Slide, Feather Pattern Book Form of superior make. Either a Rapid Symmetrical "Busch" or "Beck" F/8



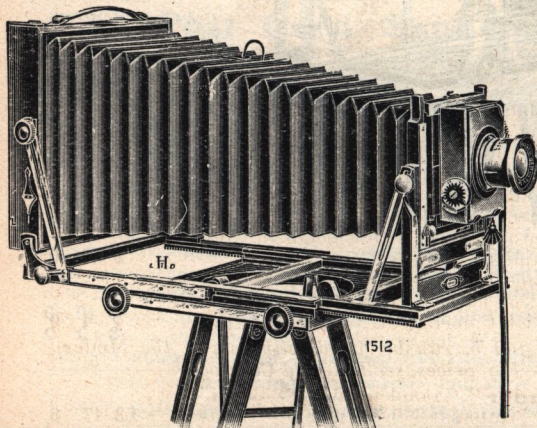
lens can be supplied, and a Roller Blind Shutter working behind the lens. There is also a Three-fold Tripod Stand with fittings for Turn-table.

The "Triple Victo" Half-Plate Outfit complete, as described above, is sold at ... **£3 15 0**

The same Camera with an R. R. Lens of first-class quality working at F/8 is also supplied at ... **£3 10 0**

"Unicum" Shutter, instead of the Roller Blind Shutter extra ... **3/6**

The "Triple Victo" Set is also made in Teak ... **£4 10 0**



BRITISH MADE.

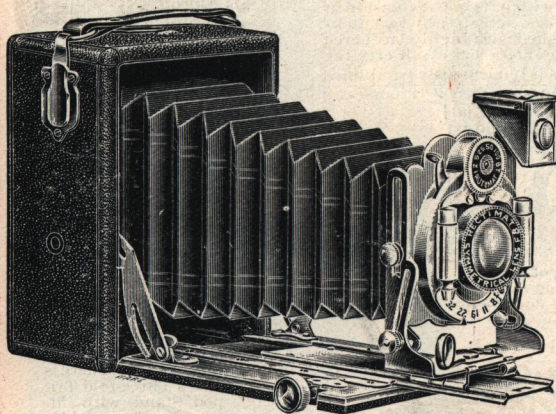
HOUGHTONS, Ltd.

Manufacturers and Wholesalers.

The "Tudor" Cameras.

A British-made series of Folding Hand Cameras of an entirely new type. The similarity of the "Tudor" to other cameras of the folding type ends with the appearance. The patent combined rising and swing front ensures that no matter how much the lens is raised in order to photograph high objects, the plate or film is always fully illuminated. With the "Tudor" automatic rising and swing front, the lens is swung on its optical centre, and therefore there is no danger that the circle of illumination is not sufficiently large to cover the plate. The finder which is attached to the front swings to exactly the same level as the

lens, and thus always shows the amount of rise obtained on the plate. There are many other advantages in connection with the "Tudor" Camera, and those who are interested in a light, handy camera of this type should apply for the printed Price List.



	$\frac{1}{4}$ -plate.	
	£	s. d.
No. 1. Camera of Mahogany, with nickel fittings. Fitted with patent Rising Front. Symplanat Lens, Simplex Auto Shutter, View Finder, Infinity Catch and Double Dark Slide, complete ...	1	10 0
No. 2. A Similar Model with "Rectimat" f/8 Lens ...	1	17 6
No. 3. A Double Extension Model with "Rectimat" f/8 Lens ...	2	10 0
No. 4. Double Extension Model with Unicum or Automat Shutter and "Rectimat" f/8 Lens ...	3	0 0
No. 5. Very handsome Model with "Beck" or "Busch" Rapid Symmetrical Lens, f/8 and "Unicum" or "Automat" Shutter: Swing Back Camera, covered in real leather ...	4	4 0
<i>Models Nos. 4 and 5, can be fitted with any of the Modern Anastigmat Lenses. For prices, see Detailed Catalogue.</i>		
Post Card "Tudor" complete with "Busch" or "Beck" Lens, and "Automat" or "Unicum" Shutter ...	£3	17 6

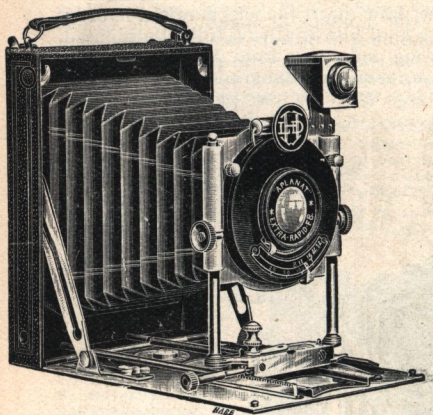
BRITISH MADE.

HOUGHTONS, Ltd.

Manufacturers and Wholesalers.

THE "ARIEL" CAMERAS.

The "Ariel" is the smallest $\frac{1}{4}$ -plate Camera on the market. It is only just a little bit larger and certainly not thicker than an



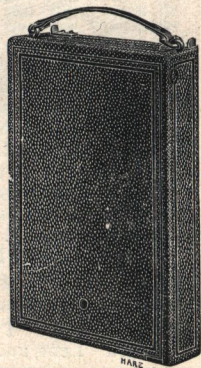
ordinary packet of $\frac{1}{4}$ -plates. This comparison is instituted to give you an idea of its wonderful compactness, yet strength and rigidity have not been sacrificed to reduce the bulk. It is a plate camera that can be carried in the pocket without betraying its presence. The "Ariel" Camera wants to be examined to be appreciated. It is strongly built of aluminium, covered in finest quality Morocco leather, and all the working parts are highly nickelled. The Lens and

Shutter are only $\frac{5}{8}$ in. thick, and the baseboard is not cut away or indented to accommodate the lens hood. The total thickness of the camera when closed is $1\frac{1}{8}$ in. less in fact than the depth of the View Finder alone which is swung automatically on a pivot so as to pack comfortably into the body. The Focussing is by Rack and Pinion, there is a swing Back and an Infinity catch, and an extra Rapid Aplanat Lens working at F/8 with Iris Diaphragms, as well as a very compact shutter, giving time and instantaneous exposures of varying speeds. Each Camera is fitted with an Antinous Release.

The price of the "Ariel" Camera complete with two single metal dark slides to take $\frac{1}{4}$ -plates is **£3 3 0**

Extra Metal Dark Slides **1/6 each.**

The "Ariel" Camera fitted with a "Cooke" Lens, Series III. working at F/6.5, and a superior Shutter complete with two metal Dark Slides, $\frac{1}{4}$ -plate **£7 7 0**



HOUGHTONS LTD. 88 HIGH HOLBORN. W.C.

HOUGHTONS, Ltd.

Manufacturers and Wholesalers.

"ENSIGN" ROLL FILM CAMERAS.

The Model "V" Ensign is the most up-to-date Roll Film Camera on the market. It is fitted with Rack and Pinion adjustment for fine focussing and the method of loading is absolutely new. The spools

are placed in Detachable Metal Carriers and the Camera loaded with remarkable ease. The Model "V" Ensign is built of well seasoned mahogany, has a Folding Aluminium Base-board, is covered in Real Leather, and possesses nickel fittings. There is a rising and falling front for both upright and oblong pictures. Removable Back Panel, which is quite flush with the Camera Pack and is simply withdrawn

when using plates or flat films in dark slides. It can be supplied with "Beck" or "Busch" Rapid Symmetrical Lens, with Bausch & Lomb "Unicum" or "Automat" Shutter, has a real Brilliant Finder,

Level, Focussing Scale, Patented Infinity Catch, and Two Tripod Sockets.

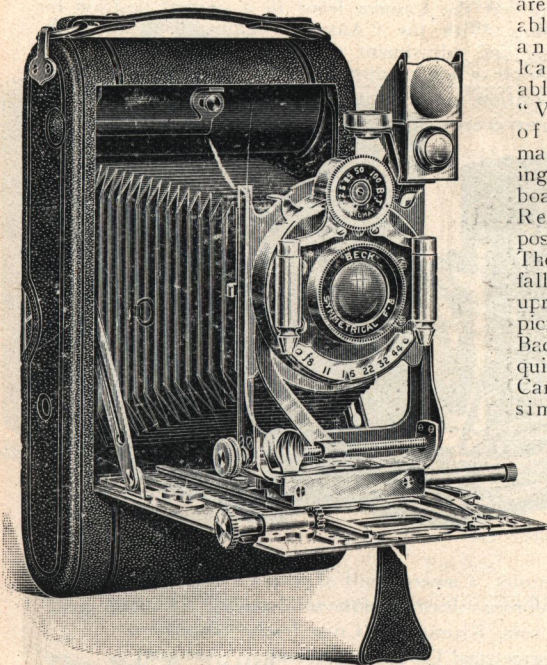
The price of the $\frac{1}{4}$ -plate Camera complete is

£3 12 6

The "Ensign De Luxe" Model, illustrated on this page, is a double extension Roll Film Pocket Camera. The Bellows can be racked out to $11\frac{1}{2}$ in., so that the single combination of the Lens can be used. Rising and Cross Fronts are worked by Fine Screw Adjustment. It is essentially the Camera for the expert.

Price with "Busch" or "Beck" Lens, "Unicum" or "Automat" Shutter. **£4 10 0**

Any Anastigmat Lenses can be fitted to these Cameras. Prices and Particulars will be found in the complete catalogue of "Ensign" Roll Film Cameras.



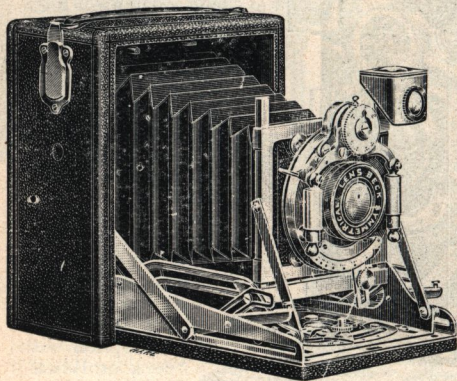
HOUGHTONS LTD. 88-89 HIGH HOLBORN, W.C.

HOUGHTONS, Ltd.

Manufacturers and Wholesalers.

The "Autolet" Camera.

The "Autolet" is a Folding Camera that automatically opens to fixed focus. With snap-shot work much valuable time is frequently wasted in drawing out the Camera front to a normal position for taking photographs. With the "Autolet" Camera, all the difficulties of focussing and adjustment of the front are reduced to a minimum. The simple action of opening the Camera brings the front out to its proper position, and almost simultaneously with the opening of the Camera the exposure can be made.



An entirely new method of focussing for near objects is provided by a cleverly constructed eccentric lever which instantaneously adjusts the Camera front for objects between infinity and 5 ft. It is vastly superior to the ordinary method of focussing by rack and pinion. The "Autolet" is closed by pushing up the base-board causing bellows and lens front to retire automatically into the body of the Camera.

Price of the "Autolet" Camera, built of polished mahogany, covered in best Morocco leather with solid nickel fittings, Real Leather Bellows, Rising and Cross front, "Busch" or "Beck" Rapid Symmetrical F/8 Lens, Unicum or "Automat" Shutter and one double dark slide for $\frac{1}{4}$ -plate is **£4 15 0**

The "Autolet" in combination with the new "HOUGHTON" Film Envelope and Adapter provides the simplest and most convenient method of taking photographs that could be devised.

BRITISH MADE.

HOUGHTONS, Ltd.

Manufacturers and Wholesalers.

“Klito” Cameras.

No series of box-form plate cameras have enjoyed so large a sale as the “Klitos.” They are made in ten different styles,

and range from 21/- to 70/-

The guinea “Klito” is the

most popular guinea camera that has ever been made.

It is built of wood throughout, has a Divided Back Door for removing exposed plates, Rapid Achromatic Lens, Patent “Klito” Adjustable Shutter for speeds from one second to 1/100th as well as time exposures.

There is also a patent Safety Cut-off Shutter which completely cuts off the plates in the magazine should it be necessary at any time to test or examine the shutter, Iris Dia-

phragms, Focussing Magnifiers, two Finders.

The No. 1 “Klito” complete as described above for 12 quarter-plates 21/-

The No. 0 “Klito” illustrated on this page is fitted with a Rapid Rectilinear Lens, but is in other respects the same as the No. 1 Model with the exception of the patent cut-off shutter. Complete, for 12 quarter-plates 21/-

For particulars of the other “Klitos,” write for the catalogue of “Klito” Cameras.



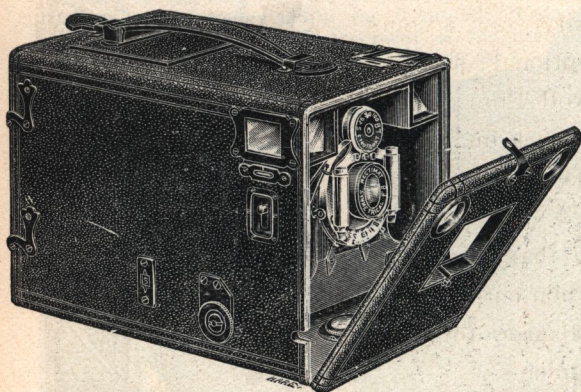
BRITISH MADE.

HOUGHTONS, Ltd.

Manufacturers and Wholesalers.

“Holborn-Ilex” Cameras.

These popular box-form Cameras are made in all styles at prices ranging from 21/- up to £9 9 0. To those who wish to have an ever-ready box-form Camera fitted with a first-class Lens, the “Holborn-Ilex” Cameras offer an immense choice. The model illustrated on this page represents the No. 5A built of Solid Mahogany covered with Real



leather, focussed by rack and pinion. Bausch and Lomb Automat Shutter. It is fitted with Levels, Finder, Isochromatic Screen, and all the latest improvements.

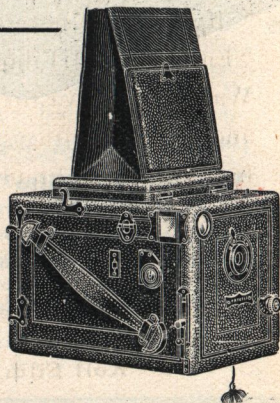
With Aldis Anastigmat Lens, Series II. No. 2 working at F/6, the cost of this Camera for 12 $\frac{1}{4}$ -plates is ... **£4 17 6**

When ordering this model, quote No. 5A.

The “Holborn-Reflex” Cameras are the cheapest full view Reflex Cameras on the market. They are built of mahogany with a specially constructed shutter, and can be obtained fitted either with Rapid Achromatic View Lens or F/8 Rapid Rectilinear of fine quality.

Price of No. 1, “Holborn-Reflex” Camera for 12 $\frac{1}{4}$ -plates is ... **£2 10 0**

The No. 2, “Holborn Reflex” Camera for 12 plates with the R.R. Lens is ... **4 4 0**



BRITISH MADE.

HOUGHTONS, Ltd.

Manufacturers and Wholesalers.

"Ensign" Roll Films.

These British-made Roll Films have attained a remarkable popularity on account of their exceptional qualities. The Ensign Roll Film is faster than any other Film on the market, its keeping qualities are unrivalled, it possesses more latitude than any other make. It is non-curlable and is made in all sizes to fit all Roll Film Cameras.

If you have never tried the "Ensign" Roll Films made at Warwick by Austin Edwards, and coated with the Double Instantaneous Emulsion, you have never realised how good a Roll Film Negative can be.



Look out for the Red and Blue Carton and refuse to accept substitutes. There is only one "Ensign" Roll Film and it is British-made.

BRITISH MADE.

HOUGHTONS, Ltd.

Manufacturers and Wholesalers.

The "Ticka." A WATCH-POCKET CAMERA.

As far as the outward appearance is concerned, the "Ticka" looks like a silver watch, and yet it is a perfect pocket Camera.

It is fitted with a time and instantaneous shutter. There is an indicator showing number of exposures made, an outside winding key for changing the film, and a first-rate lens in what would be the stem of the watch.



The "Ticka" takes 25 pictures at one loading on a self-contained spool of roll film. There is no threading up, and no duplicate spool required. You merely slip the complete cartridge into the "Ticka" and it is ready for immediate use. The operation does not take five seconds.

This wonderful little Camera has achieved a most remarkable success during the few months that it has been on the market, and arrangements are being made so that it can be obtained all over the world. No amateur photographer should neglect to see a "Ticka" or specimens of the work it produces.

The price of the "Ticka" is 8/6, and a 25 exposure spool for re-loading costs 10d. Write to us for the profusely illustrated "Ticka" booklet and particulars of the various accessories.

The "Ticka" is British made throughout. It is made in our own factories by our own men, and it is *not* imported.

BRITISH MADE.

HOUGHTONS, Ltd.

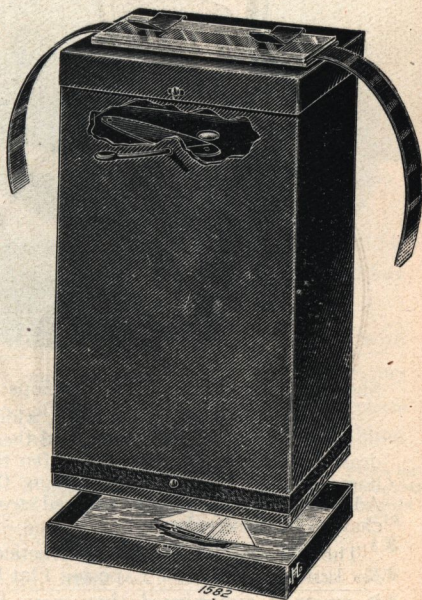
Manufacturers and Wholesalers.

The "Ticka" WATCH-POCKET CAMERA (cont.)

The actual negatives produced in the "Ticka" are the size of an ordinary penny postage stamp, but in order that the popularity of the "Ticka" may become an established fact, we are issuing in conjunction with it a piece of apparatus which we call the "Ticka" Printing Box. This Printing Box provides the user with the means of producing enlarged pictures $3\frac{1}{4} \times 2\frac{1}{2}$, and so simple is this Printing Box to use that these large prints can be produced just as easily as one would make contact prints from a negative in an ordinary printing frame. At first sight one may be sceptical about the quality of "Ticka" Pictures, but remarkable enlargements 96 times the size of the original negatives have been made, and even larger pictures can be produced without the image breaking up.

"TICKA" PRICE LIST.

"Ticka" Watch Pocket Camera, (Complete) ...	8/6
"Ticka" "Ensign" Film Spool (25 exposures) ...	10d.
"Ticka" View Finder (to fit on the stem of "Ticka" just over lens).	
Model A.—To view from behind ...	1/6
Model B.—To view from above ...	2/-
"Ticka" Printing Box. Complete with Book of Instructions. (For making Enlarged Prints $3\frac{1}{4} \times 2\frac{1}{2}$) ...	4/6
Printing Box Outfit. Complete with Book of Instructions. (For Developing and Printing Enlarged Prints) ...	2/6
Developing and Printing Outfit. Complete with Book of Instructions. (For Developing Spools and making Contact Prints actual size) ...	3/6
Complete Outfit consisting of "Ticka" Camera, "B" Finder, Printing Box, Developing Outfit, and Printing Box Outfit ...	21/-
Films can be developed, and Contact Prints, actual size, or Prints enlarged to $3\frac{1}{4} \times 2\frac{1}{2}$, supplied at the following prices:—	
Developing Films, per spool 25 exposures ...	6d.
Contact Prints " " " " ...	9d.
Enlarged Prints, $3\frac{1}{4} \times 2\frac{1}{2}$ (unmounted) per doz. ...	2/-



BRITISH MADE.

HOUGHTONS, Ltd.

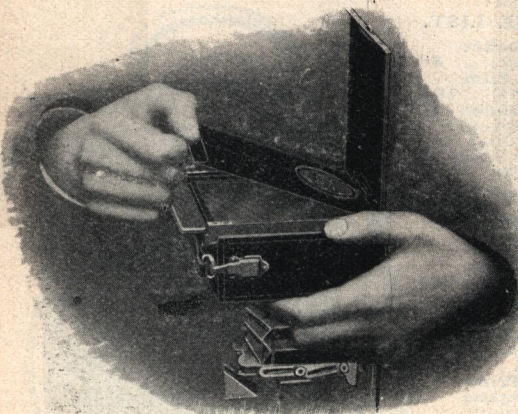
Manufacturers and Wholesalers.

The "Houghton" Film Envelope.

The first really perfect Daylight Loading System for Flat Films. The construction of the Envelope is absolutely novel, and the method of exposing the film is so safe and so free from any possible chance of error, that the system cannot but commend itself to every Camera user.

The Neat and Handy Adapter in which the Envelopes are used is smaller than the ordinary Double Dark Slide and is made of polished

mahogany with lacquered brass fittings. Only one Adapter is required for exposing any number of Envelopes. The Adapter need never be removed from the Camera, except for focussing with the ground glass screen, as the back panel hinges open for the insertion or removal of each Envelope.



Showing method of inserting Envelope in Adapter.

A "Houghton" Film Envelope, which is sold already loaded, is laid in the Adapter, the seal broken, and the back closed. The slide is then drawn and the exposure made. After the exposure the slide is pushed home, thereby automatically closing the Envelope. The back of the Adapter is now opened, the exposed envelope removed, and a new ready charged one inserted.

The operation is far simpler in practice than it sounds when described. No handier method of Exposing Flat Films has ever been devised, for it must be remembered that every Film is separate. There is no question of waiting until a whole series has been exposed before any special one can be developed.

BRITISH MADE.

HOUGHTONS, Ltd.

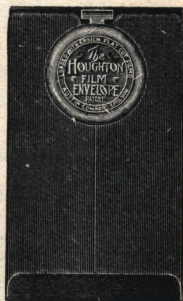
Manufacturers and Wholesalers.

The "Houghton" Film Envelope (cont.)



THE ADAPTER.

Each Film is in a separate Envelope and can be treated separately. The Envelopes can be reloaded by anyone with any make of Flat Films and used over and over again if necessary, or further supplies of charged and sealed Envelopes can be purchased just as the



THE ENVELOPE.

user thinks fit. The economical man will perhaps prefer to reload his Envelopes, while those who do not care to go to the trouble will buy the packets of Envelopes ready loaded.

The Envelopes are sold in packets of 10 packed complete with "Ensign" Flat Cut Films, and the user can therefore carry any number of packets of films all ready for exposure, or purchase them from time to time as required, packed complete with films.

	Mahogany Adapter.	Teak Adapter for Tropical "Sanderson" only.	Envelopes Loaded. Packets of 10.	Films for Reloading. Packets of 10.
For $\frac{1}{4}$ -plate Camera	... 12/6	... 15/0	... 3/0	... 1/8
" 5 x 4 "	... 15/0	... 17/6	... 4/6	... 2/6
" $\frac{1}{2}$ -plate "	... 18/6	... 21/0	... 6/0	... 3/9

BRITISH MADE.

HOUGHTONS, Ltd.

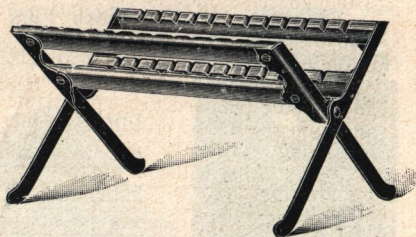
Manufacturers and Wholesalers.

A SENSIBLE DRAINING RACK.

The "Vento" Draining Rack is built on really common-sense principles. It is quite different from other draining racks that are sold for negative drying. It is extremely rigid, and when it is extended to the right width, the two legs come to a dead stop, and the stand cannot be forced farther open. There are four cherry wood bars with grooves cut to hold twelve negatives of any size up to whole plate.

These grooves are so shaped that the water which drains from the surface of the negative does not accumulate at the bottom edges of the plate. There is no opportunity for a bead of water to hang on the edge of the plate and prevent the gelatine from drying.

It is called the "Vento" rack because the negatives get perfect ventilation, and dry quickly. No metal comes into contact with the plates, and there is no danger of rust or other marks on the emulsion. You buy it in a box. Don't take any other kind. Price 10d. only.



THE "ENSIGN" ISO SCREEN.

This is a British-made screen for use with colour corrected plates and films. It is not a piece of dyed gelatine that is likely to lose its colour in the sunlight. The "Ensign" Screen is of optically worked glass. The mount is oxidised, and there is a spring adapting arrangement so that one screen may be fitted to several lenses. There are 2 depths—A (3 times) and B (6 times). Each screen in a velvet lined case.

Prices :

	s.	d.		s.	d.
1 inch to 1 $\frac{1}{4}$ inch	2	6	1 $\frac{1}{2}$ inch to 1 $\frac{3}{4}$ inch	3	6
1 $\frac{1}{4}$ " to 1 $\frac{1}{2}$ "	2	6	1 $\frac{3}{4}$ " to 2 "	4	6

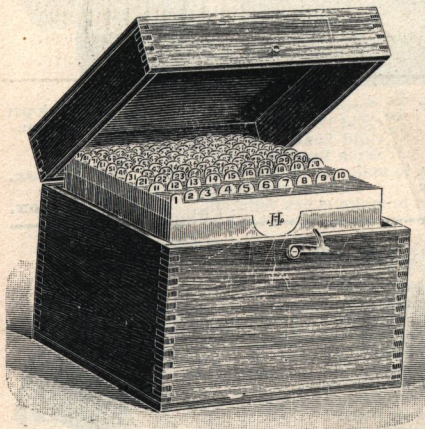
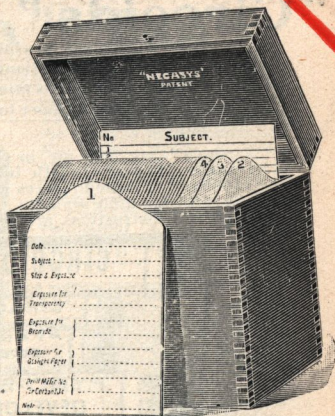
BRITISH MADE.

HOUGHTONS, Ltd.

Manufacturers and Wholesalers.

THE "NEGASYS" SYSTEM OF FILING NEGATIVES.

Nothing could be more simple than the "Negasys" Filing System for storing either film or glass negatives. Although these files have only been introduced recently they have completely superseded the old bulky plate boxes and the inconvenient film album. Any negative can be found instantly, and can be removed to a special file and taken out for printing without interfering with the others. The "Negasys" Files will simplify the most complicated stock of negatives, or can be used with equal success for a few



Prices of the Plate Negasys.

$\frac{1}{4}$ -plate File for 50 negatives...	1/6
5 by 4 do. do. ...	2/-
Postcard plate ($5\frac{1}{2}$ by $3\frac{1}{2}$), File for 50 negatives ...	2/6
$\frac{1}{2}$ -plate File for 50 negatives...	2/6
Whole plate do. do. ...	3/9

dozen. The film "Negasys" will appeal particularly to those who have had trouble with storing films. It prevents handling the gelatine surfaces, and the wallet cards with their stiff backing, obviate any of the twisting found in some of the older makes of film. Get one for a special series, and if you like the idea, extend it to your whole stock of negatives. The cost is quite low.

Prices of the Film Negasys

$3\frac{1}{4}$ by $2\frac{1}{4}$ File with 100 Wallet Cards ...	2/6
$\frac{1}{4}$ -plate File with 100 Wallet Cards ...	3/-
5 by 4 File with 100 Wallet Cards ...	4/-
Postcard File with 100 Wallet Cards ...	4/6

BRITISH MADE.

HOUGHTONS, Ltd.

Manufacturers and Wholesalers.

"Circoids."

Not only do "Circoids" produce a greater quantity of solution than similar preparations, but the ingredients used are of such undoubted purity, and the process of manufacture is attended with such care that they are, value for value, worth considerably more to the amateur photographer than anything else of a like nature.

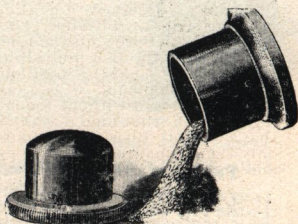
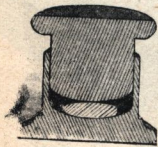
"Circoids" are put up in glass tubes, which absolutely prevent any deterioration through climatic influences. The corks are large and sound, and will not break or come to pieces when being withdrawn. They are well waxed, and the tubes are quite air-tight. These tubes are put up in a neat cardboard box, and full instructions are enclosed.



Hydrokinone, to make 40 ozs. Developer.	Pyro-Metol, to make 40 ozs. Developer.
Metol-Quinol " 40 ozs. "	Gold Toning & fixing " 20 ozs. Solution.
Pyro-Soda " 40 ozs. "	Gold Toning " 40 ozs. "
Amidol " 20 ozs. "	Sepia Bromide Toner " 48 ozs. "
Platinum Toner, to make 16 ozs. Solution.	1/0 per box.
Reducer, to make 15 ozs. Solution.	Restrainer, to make 5 ozs. Solution.
Hypo Eliminator, to make 15 ozs. Solution.	6d. per box.

The "Tablet Crusher."

By this crusher, one is enabled to reduce to fine powder in the space of a few seconds, any of the chemicals which are now put upon the market in the handy form of tablets, etc. Every portion of the substance to be crushed is reduced to the finest powder. This powder remains in this cup-shaped receptacle and can be poured out into the measuring glass without the loss of a single grain. The strength of the solution is unimpaired, and the fine powder of course dissolves almost instantaneously. It is made in one form only, and costs 2/0.



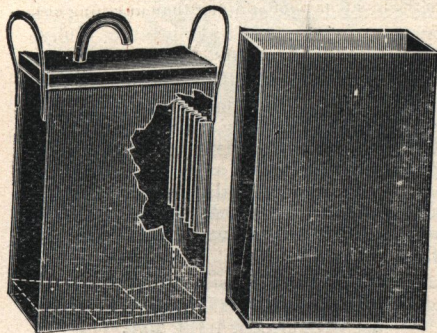
BRITISH MADE.

HOUGHTONS, Ltd.

Manufacturers and Wholesalers.

The "Standa" Tank.

The "Standa" Tank is an invention which does away with the need of a dark-room. It develops glass plates in five or six minutes without attention in daylight or any light. The "Standa" Tank wonderfully simplifies the process of development.



No more need to pore over developing dishes, or to dabble with the fingers in chemicals. No need, in fact, to know anything about development. All that is necessary is to follow the simple instructions.

Development takes place in complete darkness, and the negatives are clean, bright and free from all stains and blemishes. The cost of the "Standa" Tank is no more than that of the orthodox outfit of dishes, bottles, measures, and scales.

Size of Plates or
Flat Films taken.

$4\frac{1}{4} \times 3\frac{1}{4}$ in.

9 x 12 cm.

5 x 4 in.

$6\frac{1}{2} \times 4\frac{1}{4}$ in.

Ordinary
Quality.

3s. 6d.

4s. 6d.

5s. 0d.

6s. 6d.

Best quality,
Nickel-plated.

6s. 6d.

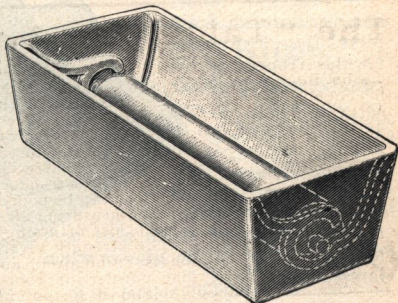
7s. 6d.

8s. 6d.

9s. 6d.

The "Economic" Developing Trough.

Specially designed for developing strips of roll film. The weighted roller prevents the film coming out of the dish, and while it is always held in position during development, it can at once be removed without touching it with the fingers. The shape of the dish necessitates only a small quantity of developer and prevents waste.



each.
All sizes up to 4 in. spools, 3s. 0d.

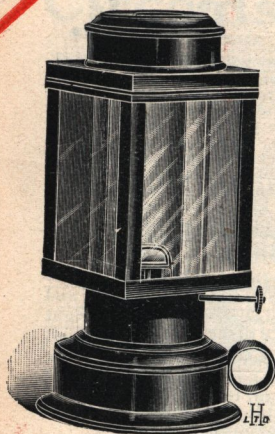
" " $5\frac{1}{2}$ in. " 3s. 6d.

" " $7\frac{1}{2}$ in. " 4s. 6d.

BRITISH MADE.

HOUGHTONS, Ltd.

Manufacturers and Wholesalers.



"Junior Universal" Lamp.

The great advantage of this Lamp is that by means of the revolving top either Ruby, Yellow, or White Light is obtainable at will. It is fitted with four glasses, two Ruby, one Yellow, and one White, each separate compartment being perfectly light trapped so that only the desired shade is given. It is supplied with Oil Lamp and outside winder, the revolving portion sliding up the central column to open. Beautifully Japanned Black outside and thoroughly well made in every part.

Price, complete ... 4/6

Larger pattern, triangular for gas, 8/6; or for use with electric light, 10/6.

The "Presto" Lamp.

A practical Model of superior finish, Solid Metal Base, Ruby and Orange Glasses which can be used together or separately, or can both be opened out to admit white light, Outside Winder, Paraffin Lamp with Chimneyless Burner, and Large Shade which also acts as a protector to the glasses when lamp is not in use.



Price of the "Presto" Lamp, 5/0. A smaller model, 3/6.

BRITISH MADE.

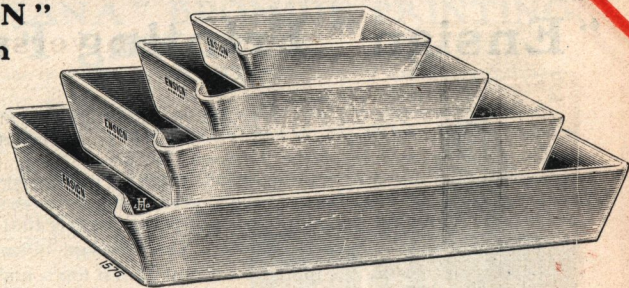
HOUGHTONS, Ltd.

Manufacturers and Wholesalers.

" ENSIGN "

Porcelain Dishes.

better
than any
other De-
veloping
Dish on
the mar-
ket. A
trough
runs right



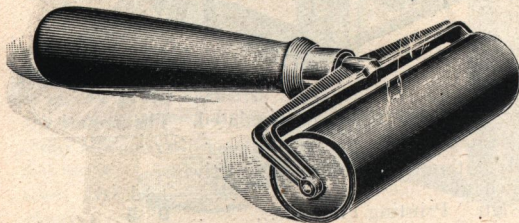
across the bottom of each dish enabling the plate to be lifted out easily. A raised rim round the base prevents the dish sticking to a wet developing bench. The corners of all the larger size dishes are stronger and thicker than usual. The "Ensign" dishes are made in the celebrated Staffordshire Potteries, and are of the Finest Porcelain which has ever been used for the purpose of the manufacture of Photographic Dishes. The finish is all that can possibly be desired, and in every respect the "Ensign" Porcelain Dishes can be thoroughly recommended as the best Porcelain Dishes on the market. They are perfectly flat, and will withstand any Photographic Chemicals.

Inside Measurement.	Shallow. Each.	Deep. Each.	Inside Measurement.	Shallow. Each.	Deep. Each.
4½ x 3½	0s. 6d.	0s. 7d.	10 x 8	1s. 5d.	1s. 8d.
5 x 4	0s. 7d.	0s. 8d.	12 x 10	2s. 3d.	2s. 9d.
5½ x 3½	0s. 7d.	0s. 8d.	15 x 12	5s. 0d.	6s. 0d.
7 x 5	0s. 10d.	0s. 11d.	18 x 14	9s. 0d.	12s. 0d.
9 x 7	1s. 2d.	1s. 5d.			

" Kligees "

Squeegees.

"Kligees" are strong sensible squeegees with polished handles and red rubber rollers. They are made in a variety of sizes, and all up to six inches in width are sold in a box.



3 in. Roller "Kligees"	...	7d.	6 in. Roller "Kligees"	...	1s. 0d.
4 " " "	...	8d.	8 " " "	...	1s. 6d.
5 " " "	...	10d.	10 " " "	...	1s. 10d.

BRITISH MADE.

HOUGHTONS, Ltd.

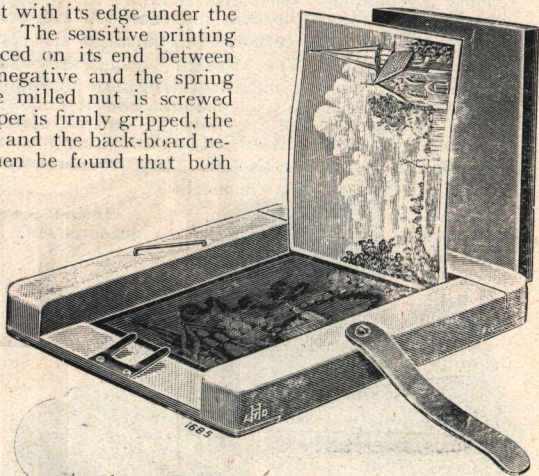
Manufacturers and Wholesalers.

"Ensign" Printing Frame. (PATENT).

An entirely new type of frame which not only holds both negative and paper absolutely firmly, but enables the user to see every bit of his print at once.

The principal feature of the "Ensign" Printing Frame is a spring pressure bar actuated by a milled head screw. This pressure is exerted on the edge of the negative, and the paper coming between the edge of the negative and the pressure bar is gripped so tightly that neither the paper nor the negative can be moved. The "Ensign" Printing Frame is filled by unscrewing the milled head nut at the top a few turns, then laying the negative on the rebates with its edge under the spring paper lifter. The sensitive printing paper is then placed on its end between the edge of the negative and the spring pressure bar. The milled nut is screwed tight until the paper is firmly gripped, the paper turned down and the back-board replaced. It will then be found that both paper and negative are firmly clamped and full view examination can be made without either paper or negative shifting in the slightest.

The back of the "Ensign" Printing Frame is built of a non-warpage wood all in one piece, and only one pressure spring has to be manipulated. The negative cannot fall out or get damaged while the spring paper lifter enables the print to be raised easily without scratching the negative.



$\frac{1}{4}$ -plate	"Ensign" Printing Frame	s. d.
				0 6
5×4	"	"	"	0 9
$\frac{1}{2}$ -plate	"	"	"	0 11
$1/1$	"	"	"	1 10

BRITISH MADE.

HOUGHTONS, Ltd.

Manufacturers and Wholesalers.

THE "HANA" BROMIDE PRINTING MACHINE.

This machine is designed specially for printing on cut sheets and post cards with the utmost possible speed, accuracy, and ease. It is substantially constructed, well-finished, and meant for continual and practical use.

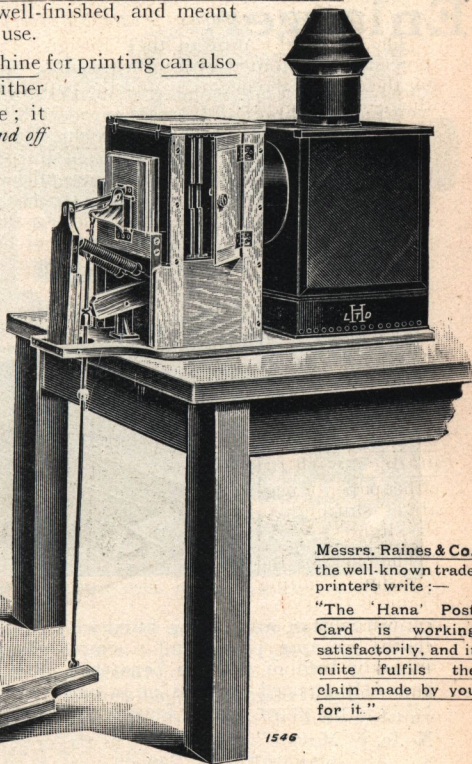
The light used in the machine for printing can also be used for developing on either or both sides of the machine; it is constant—not turned on and off during printing. The exposure is effected by a shutter, there is no actinic light in the room during the changing of either the prints, negatives, or vignettes. The lamp has two ruby glasses, and full-sized yellow fabric panels, one each side, which give a good illumination all over the dark-room.

Both hands are free for changing the paper only; one hand takes off the exposed sheet, and the other one places a fresh sheet on the negative down against the guide points.

All the working of the machine is done by treadle. When a fresh sheet of paper is placed on the negative, the heel is pressed down, and that one movement first closes the

pressure back and then opens the shutter. The "Hana" Machine is being used extensively by the leading Trade Printers and many Professional Photographers. A fully Illustrated Booklet free.

Price Complete, as illustrated, with "Kern" Incandescent Burner, £4 15s.



Messrs. Raines & Co.
the well-known trade
printers write:—

"The 'Hana' Post
Card is working
satisfactorily, and it
quite fulfils the
claim made by you
for it."

1546

BRITISH MADE.

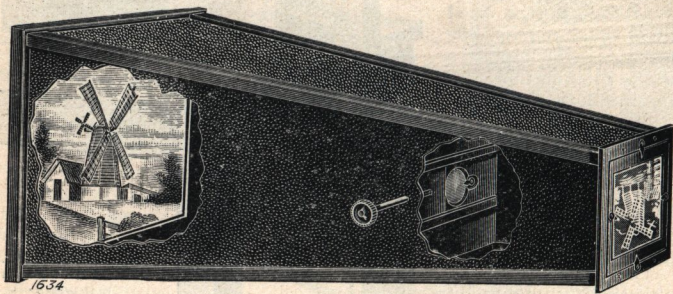
HOUGHTONS, Ltd.

Manufacturers and Wholesalers.

“Mascot” Daylight Enlarger.

The “Mascot” Daylight Enlarger is introduced to meet the requirements of a large number of amateurs who are not inclined to invest in an Enlarger of the more expensive type, and yet want to rely on being able to produce crisp and technically perfect enlargements.

The “Mascot” Enlarger is built on an entirely new principle. The framework and the cross sections are all made of wood, while the side panels are built of stout millboard, blackened a dull matt colour inside, and covered externally with a close-grain leather material. The “Mascot” Enlarger will stand plenty of hard usage and unlike the old style cardboard enlargers, made without the wooden framework, it



cannot twist or warp. It is fitted with a specially selected lens of excellent covering power, and a simple plunge shutter. The Bromide Paper is held in position beneath a glass panel, and the back is ingeniously stepped and fits on in such a manner that there is no possibility of the paper getting fogged at the edges, or shifting.

No. 2. “Mascot” Enlarger ($\frac{1}{4}$ to 1/1, or $3\frac{1}{2} \times 2\frac{1}{2}$ to $\frac{1}{2}$ -plate) ... 6 6

No. 4. ” ” ($\frac{1}{4}$ to 12 x 10, or $3\frac{1}{2} \times 2\frac{1}{2}$ to whole-plate) 10 6

Complete with Book of Instructions, Packet of Bromide Paper and Packet of Metol-Hydroquinone Developer

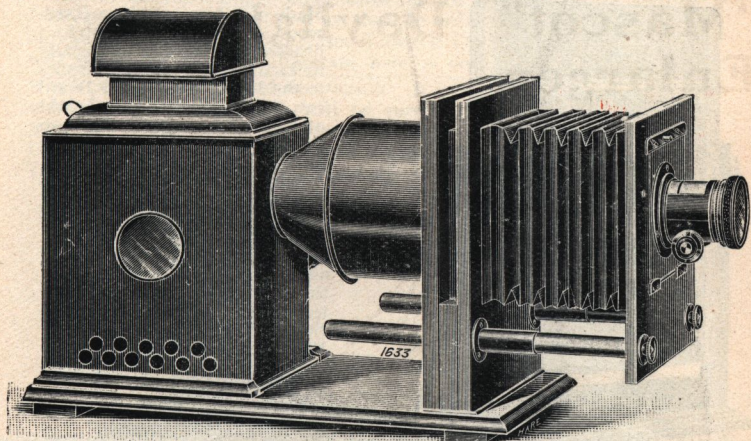
A complete Catalogue of Enlargers and Enlarging Apparatus will be sent free on application.

BRITISH MADE.

HOUGHTONS, Ltd.

Manufacturers and Wholesalers.

"VICTO" ENLARGING LANTERN.



This Enlarging Lantern is constructed on thorough scientific principles, and fulfils all the requirements necessary for obtaining the most perfect results.

The Apparatus is well and strongly made of Polished Mahogany with extra large Russian Iron Lantern Body, made to accommodate either Incandescent Gas, or Electric Arc luminants. A sliding metal tray and Incandescent Support is supplied. A Rising Front Lens Panel is fitted.

The Optical System has been carefully studied, the Condenser double plano-convex mounted in solid bronze cells, being constructed from the optically worked glass.

The Portrait Lens is of superior quality and has a rack and pinion for fine adjustment, four diaphragms and orange glass cap. The Lenses are specially selected and corrected.

No. 1B. Complete with Tray and Incandescent Support only!
(as illustrated) to enlarge from $\frac{1}{4}$ -plate to 5 in. $\begin{matrix} \text{£} & \text{s.} & \text{d.} \end{matrix}$
Condenser, complete with Portrait Lens ... **3 0 0**

Extra for Aldis Lens Series II No. 2 instead of Portrait Lens, 17/6.

No. 1A. With Cantilever Pattern body, complete with Incandescent Gas or Oil attachment as required ... **3 0 0**

Extra for Aldis Lens Series II. No. 2 instead of Portrait Lens, 17/6.

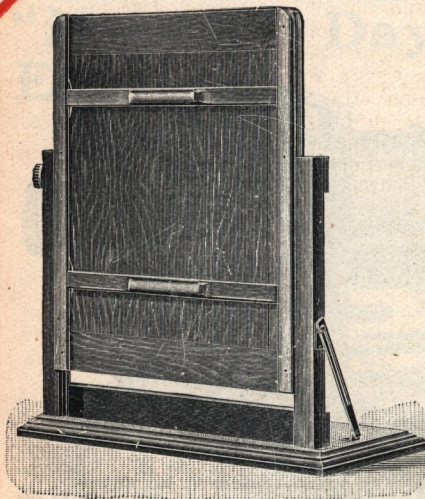
Full Catalogue of Enlarging Lanterns, all kinds and at all prices sent post free on application.

BRITISH MADE.

HOUGHTONS, Ltd.

Manufacturers and Wholesalers.

"Holborn" Enlarging Easel.



Made of White American Hardwood. It is kept in position by a brass strut which automatically locks when it is at right angles to the base. The Easel Board can be adjusted to any height and can be instantly fixed in the required position by the milled nut at the side.

Bromide Paper held in position by the Spring Pressure Bars.

When fixing the Bromide Paper the Side Strut can be released and the Easel Board swung back and laid flat and the Bromide Paper easily inserted under the Spring Pressure Bars. When raised, the Easel Board automatically locks in the same position it occupied during focussing.

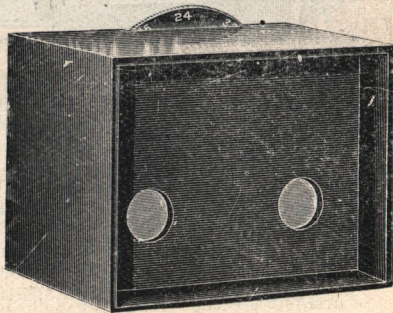
The total height of the Easel when set up is 17 in.

Model A. Complete with Spring Pressure Bars, to take up paper to 15 by 12 in. ... 8s. 6d.

Model B. Cheaper Model, constructed of White Wood with Rising and Axial movements, 15 by 12 in. ... 3s. 9d.

Dawson's Densitometer.

A certain and easy method of testing density. Overcomes the present method of trial exposures on pieces of paper which have to be exposed and developed before the actual print is made. All negatives tested in the Densitometer can be given what is called a Densitometer number so that at any time under any circumstances the exact exposure can be arrived at by the use of this handy little appliance. A whole series of bromide or gas-light prints can be made from a widely varying range of negatives, yet all the prints will be correctly exposed, and a great saving of time is effected.



The price of the Densitometer complete in a box with exposure tables 5/-.

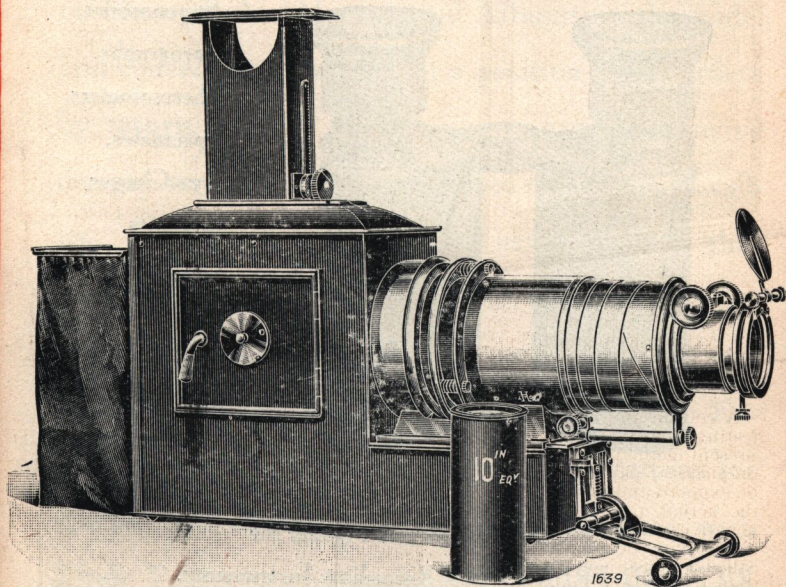
BRITISH MADE.

HOUGHTONS, Ltd.

Manufacturers and Wholesalers.

OPTICAL LANTERNS.

We do an exceedingly large trade in all descriptions of Optical Lanterns and accessories, and we shall be only too happy to forward our detailed and fully illustrated Lantern Catalogue to anyone who will apply for it. We illustrate here a very fine Lecture Lantern which we have introduced this season. It is No. 28 in our list, and has several novel points which will be sure to find favour with practical workers. There is an Automatic Tilting arrangement by which the Lantern can be raised or lowered, an Improved Sliding Helical Draw Tube for long focus lenses. The body is of heavy Russian iron with



dome top, splendidly ventilated and trapped. Front stages are of heavy lacquered brass, there is a 4½-inch condenser and a lens of either a 6-in., 8-in., 10-in., or 12-in. focus can be supplied.

Price with a Holborn 160 c.p. Lamp £5 5 0

The same lantern can be supplied without lamp at a lower price, or can be fitted for gas, acetylene, lime or electric light. See special Catalogue.

BRITISH MADE.

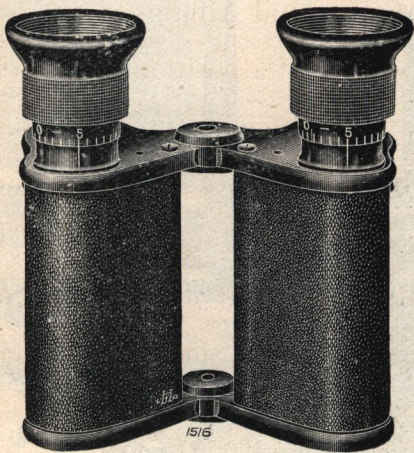
HOUGHTONS, Ltd.

Manufacturers and Wholesalers.

Optical Department.

CONTRACTORS TO H.M. GOVERNMENT.

Manufacturers and Dealers in



Microscopes,
Stereoscopes,
Barographs,
Thermometers,
Spectacles,
Eye-Glasses,
Sextants,
Quadrants,
Binoculars,
Field Glasses,
Opera Glasses,
Barometers,
etc., etc.

Sole Wholesale Agents for
RICHARD FRÈRES Self-Recording Instruments.

All Orders for Optical Goods should be sent direct to
JOSEPH LEVI & Co. (Optical Branch of Houghtons, Ltd.)

95, Hatton Garden, London.

HOUGHTONS LTD. 88 HIGH HOLBORN.W.C.

HOUGHTONS, Ltd.

Manufacturers and Wholesalers.

Mounts and Albums.

We hold the largest and most complete stock of Photographic Mounts and Albums in the trade, and consequently we are in a position to fill orders by return. Many of our mounts are of exclusive design and cannot be obtained except through us. In albums too, we have several styles that have been specially designed to suit the requirements of customers who want something different to the ordinary stock lines. Wholesalers, Exporters, and Dealers should send for quotations for special and exclusive patterns. Catalogues with Trade Terms on application.

BRITISH MADE.

Wholesale & Export.

The foregoing pages can only be taken as the merest indication of the immense variety of photographic apparatus and appliances that we manufacture and handle. As the largest house in the trade we are in a position to offer dealers the advantages of a huge and varied stock.

We have travellers and representatives all over the Empire, and pay special attention to our Export business. Dealers and others should put themselves into communication with our head office, and every dealer who values his trade should make a point of being on our Mailing List.

Catalogues and printed matter dealing with all our productions are sent free to any part of the globe. All enquiries dealt with promptly and in detail.

Our Colonial Representatives will always be glad to hear from prospective customers.

SOUTH AFRICA.—T. Eyre Clatworthy, P.O. Box 308,
Cape Town.

AUSTRALASIA.—H. V. Lawes, P.O. Box 748, 127, King
Street, Sydney.

INDIA.—James Whitby, 12, Dalhousie Square,
Calcutta.

HOUGHTONS, Ltd.

88-89, High Holborn, London, W.C.,

And at 70-78, York Street, Glasgow.