



PREMO



# Premo Price List

Superseding all Price Lists published prior to May 15th, 1922

Premo Jr. No. 1.....	\$ 2.50
Premo Jr. No. 1A .....	3.50
Premoette Jr. No. 1, Single Lens.....	8.00
Do., R. R. Lens .....	10.00
Do., K. A. f.7.7 Lens.....	15.00
Premoette Sr., R. R. Lens 2½ x 4¼.....	13.00
Do., 3¼ x 4¼.....	13.00
Do., 3¼ x 5½.....	17.00
Do., with K. A. f.7.7 Lens 2½ x 4¼ .....	18.00
Do., 3¼ x 4¼.....	18.00
Do., 3¼ x 5½.....	22.00
Pocket Premo.....	11.00
Premo No. 12, R. R. Lens.....	20.00
Do., with K. A. f.7.7 Lens .....	25.00
Do., with B. & L. K. A. f.6.3.....	53.00
Do., with K. A. f.6.3 Lens .....	43.00
Do., with B. & L. Tessar Series IIb f.6.3 Lens.....	68.00
Do., with B. & L. Tessar Series Ic. f.4.5 Lens.....	65.00
Premo No 8, 4 x 5, with plate holder and carrying case .....	20.00
Do., 3¼ x 5½.....	20.00
Do., 5 x 7 .....	30.00
Do., with K. A. f.7.7 Lens 3¼ x 5½ .....	25.00
Premo No. 9, Planatograph Lens 3¼ x 5½, with plate holder and carrying case.....	40.00
Do., 4 x 5 .....	40.00
Do., 5 x 7.....	50.00
Do., with K. A. f.7.7 Lens 3¼ x 5½.....	45.00
Do., 4 x 5 .....	45.00
Do., with K. A. f.6.3 Lens 3¼ x 5½ .....	65.00
Do., 4 x 5 .....	65.00
Do., with B. & L. K. A. f.6.3 Lens 3¼ x 5½.....	80.00
Do., 4 x 5.....	75.00
Do., 5 x 7.....	105.00
Premo No. 10, Planatograph Lens, 5 x 7, with plate holder and carrying case .....	85.00
Do., with B. & L. K. A. f.6.3 Lens.....	145.00
Do., with B. & L. Protar Series VIIa Lens No. 8.....	190.00
Cartridge Premo No. 2.....	2.50
Cartridge Premo No. 2A.....	3.50
Cartridge Premo No. 2C.....	5.00
Folding Cartridge Premo No. 2, Single Lens.....	8.00
Do., with R. R. Lens.....	10.00
Folding Cartridge Premo No. 2A, Single Lens.....	9.00
Do., with R. R. Lens.....	11.00
Folding Cartridge Premo No. 2C, Single Lens.....	12.00
Do., with R. R. Lens.....	14.00
Folding Cartridge Premo No. 3A, Single Lens.....	13.50
Do., with R. R. Lens .....	16.00

PRICES SUBJECT TO CHANGE WITHOUT NOTICE

# Premo Cameras

1921

Canadian Kodak Co., Limited

*Toronto, Canada.*

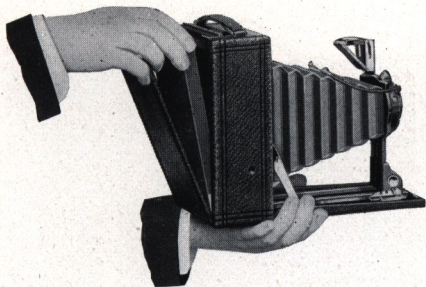


## Premo Cameras

Have been manufactured and have given continuous good service to the public for over thirty years. They not only have these long years of keen manufacturing experience behind them, but are also backed by the policy of the Kodak Companies of allowing nothing to be placed on the market which will not do all that is claimed for it.

Anyone who is interested in amateur photography will find listed in this catalogue a series of plate, film pack, and roll film cameras from which a most satisfactory choice can be made, no matter what the requirements may be. Each model is efficient and dependable.





## The Premo Way

**T**HE out-of-door and vacation days are rich in picture stories, which are yours for the taking; and in these easily made pictures you will live over again the pleasant incidents and occasions that will make this summer different from all your other summers.

Make these interesting pictures "the Premo way."

In the Premo line, there are many models, varying in size, style, lens and shutter equipment, as well as in price. There is a Premo for almost every requirement, and Premos are compact, light, very simple in operation, and unusually small for the size of the pictures they take.

Premo Film Packs combine Eastman film quality and convenience with the quickest and simplest method of daylight loading. Each pack contains twelve exposures. To load, open the camera back, drop in a pack, draw the safety cover and you are ready. Make your snap shots as rapidly as you wish, merely pulling out a paper tab after each exposure. Changing packs is the work of but a few seconds. Another helpful feature is that one or more films may be removed from the pack for development, before the entire pack is exposed.

The Premo Film Pack Adapter converts plate cameras into daylight loading film cameras, with the helpful advantage of focusing and composing each picture between exposures.

Kodak cartridge film convenience is provided with the Folding Cartridge Premos.

Canadian Kodak Co., Limited

*Toronto, Canada.*





## Premo Junior

**B**ECAUSE it makes such excellent pictures so easily the Premo Junior has, for years, brought lots of pleasure and satisfaction to adults as well as to the youngsters.

Both lens and shutter are always set, ready for use. Open the back, drop in a Premo Film Pack; arrange the picture with the horizontal or vertical finder, and press the shutter lever.

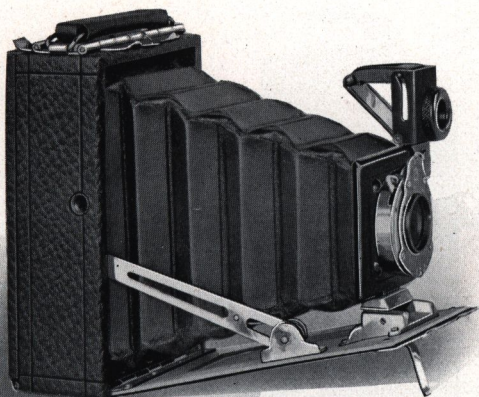
Although the Premo Junior is low in cost, great care is taken in its construction and in the selection of lenses having standard quality.

***DETAILS***—Capacity: 12 exposures without reloading. Size of Camera: No. 1,  $3\frac{1}{8} \times 4\frac{1}{2} \times 5\frac{3}{4}$  in.; No. 1A,  $3\frac{1}{2} \times 5\frac{1}{2} \times 5\frac{7}{8}$  in. Weight: No. 1, 11 ozs.; No. 1A, 14 ozs. Shutter: Rotary Automatic, with diaphragm stops. Lens: No. 1, Meniscus; No. 1A, Meniscus Achromatic. Finders: Two. Tripod sockets: Two.

### PRICES

	No. 1 $2\frac{1}{4} \times 3\frac{1}{4}$	No. 1A $2\frac{1}{2} \times 4\frac{1}{4}$
Premo Junior, as per details . . . . .	\$2.50	\$3.50
Carrying Case . . . . .	1.35	1.60
Premo Film Pack No. 320 for $2\frac{1}{4} \times 3\frac{1}{4}$ , No. 316 for $2\frac{1}{2} \times 4\frac{1}{4}$ (12 exposures) . . . . .	.50	.60
Kodak Portrait Attachment . . . . .	.75	.75





## Premoette Junior

**A** NEAT, little pocket camera that makes  $2\frac{1}{4} \times 3\frac{1}{4}$  pictures. It loads quickly in daylight with the Premo Film Pack containing twelve exposures, and after the folding bed is dropped, there is but one simple focusing adjustment.

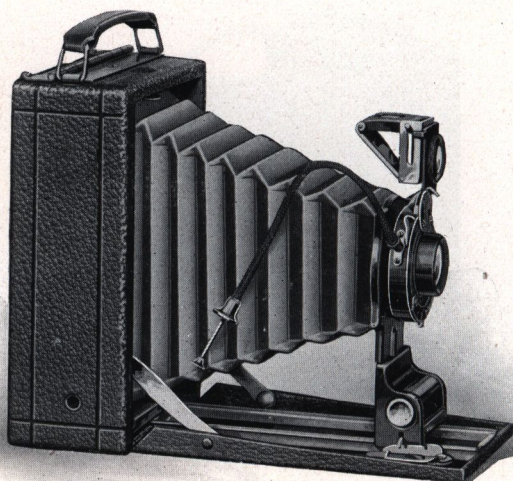
The carefully tested lens fitted to the Premoette Jr. produces negatives of such good quality that enlargements many times the size of the contact prints may be made.

**DETAILS**—Dimensions:  $1\frac{1}{2} \times 3 \times 4\frac{3}{4}$  in. Body: Aluminum. Weight: 12 ozs. Finder: Brilliant, collapsible and reversible. Tripod sockets: Two.

### PRICES

	No. 1 $2\frac{1}{4} \times 3\frac{1}{4}$
Premoette Jr. with Meniscus Achromatic Lens and No. 0	
Kodak Ball Bearing Shutter, with finger release . .	\$9.00
With R. R. Lens, No. 0 Shutter, with finger release .	11.00
With Kodak Anastigmat Lens, <i>f</i> .7.7, No. 1 Shutter	
with cable release . . . . .	16.00
Sole Leather Carrying Case . . . . .	2.40
Kodak Portrait Attachment . . . . .	.75
Premo Film Pack No. 320 (12 exposures) . . . .	.50





## Premoette Senior

A MODEL that provides three popular picture sizes; a choice of standard lens equipments; the most simple and rapid daylight loading method—the Premo Film Pack, and finally—low cost for such excellent quality.

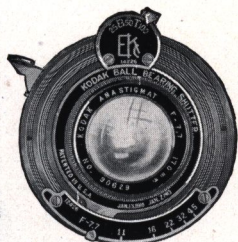
The Premoette Senior is supplied with either Rapid Rectilinear lens or Kodak Anastigmat  $f.7.7$ . While pictures of excellent quality are produced with the R.R. lens, the advantages of the anastigmat, other than its greater speed, are well known and more than balance the slight difference in cost between the two lenses. The Kodak Anastigmat  $f.7.7$  is the equal of any anastigmat lens made in qualities of definition, depth and covering power.

All lens and shutter adjustments are simple in the extreme for making pictures under average conditions of amateur photography.



The Kodak Ball Bearing shutter has time and bulb actions and retarded speeds of  $\frac{1}{25}$ ,  $\frac{1}{50}$  and  $\frac{1}{100}$  seconds. It works with either cable or finger release and is unusually accurate and reliable.

The lens standard is exceptionally rigid, and is operated by an automatic clamp, making it an easy matter to draw the lens out to the focusing scale, where an automatic focusing lock provides for quick focusing of objects at any distance.



The Premo Film Pack principle of daylight loading and changing film greatly simplifies picture making for the beginner as well as the experienced in photography. Just open the back; drop in a pack; pull out a paper tab—and the first film will be in position for exposure. To change film after its exposure, pull out the next numbered paper tab. When the twelfth tab is drawn, the pack is sealed and may be removed in daylight. It's all very simple—and quick. The exposed films may then be developed in the Premo Film Pack Tank.

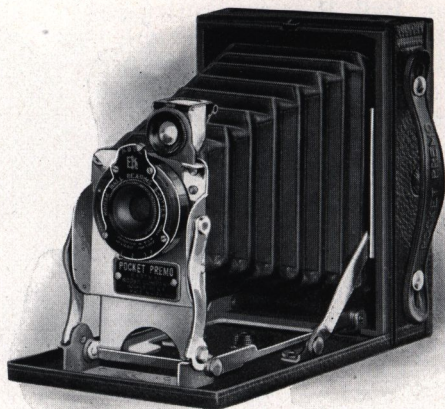
Fitted with the Kodak Portrait Attachment these cameras are excellent for home portraiture.

Premoette Seniors are covered with black grain leather and the metal parts are finished in nickel and black, making a very attractive camera.

**DETAILS**—Capacity: 12 exposures. Body: Seasoned wood. Bed and back: Aluminum. Dimensions:  $2\frac{1}{2} \times 4\frac{1}{4}$ ,  $1\frac{7}{8} \times 3\frac{5}{8} \times 5\frac{5}{8}$  in.;  $3\frac{1}{4} \times 4\frac{1}{4}$ ,  $1\frac{1}{8} \times 4\frac{1}{8} \times 5\frac{5}{8}$  in.; 3A.  $3\frac{1}{4} \times 5\frac{1}{2}$ ,  $2\frac{1}{4} \times 4\frac{1}{2} \times 7\frac{1}{8}$  in. Weight:  $2\frac{1}{2} \times 4\frac{1}{4}$ , 21 ozs.;  $3\frac{1}{4} \times 4\frac{1}{4}$ , 22 ozs.; 3A,  $3\frac{1}{4} \times 5\frac{1}{2}$ , 35 ozs. Tripod sockets: Two. Finder: Reversible, brilliant, collapsible. Automatic standard clamp. Automatic focusing lock.

	PRICES		
	$2\frac{1}{2} \times 4\frac{1}{4}$	$3\frac{1}{4} \times 4\frac{1}{4}$	3A $3\frac{1}{4} \times 5\frac{1}{2}$
Premoette Sr., with R. R. Lens and Ball Bearing Shutter . . . . .	\$15.00	\$15.00	\$19.00
With Kodak Anastigmat Lens, <i>f</i> .7.7 . . . . .	20.00	20.00	24.00
Sole Leather Carrying Case . . . . .	3.50	3.50	4.75
Premo Film Pack No. 316 for $2\frac{1}{2} \times 4\frac{1}{4}$ , No. 318 for $3\frac{1}{4} \times 4\frac{1}{4}$ , No. 322 for $3\frac{1}{4} \times 5\frac{1}{2}$ (12 exposures) . . . . .	.60	.90	1.10
Kodak Portrait Attachment . . . . .	.75	.75	.75





## Pocket Premo

**E**ASY to load—easy to use—easy to carry, briefly describes the attractive features of this little camera.

The Pocket Premo makes  $2\frac{1}{4} \times 3\frac{1}{4}$  pictures, yet is only  $1\frac{1}{4}$  inches in thickness,  $3\frac{1}{4}$  inches wide and but a little over 4 inches long—small enough to be conveniently carried in a side pocket.

With all working parts fully enclosed when it is shut, the camera opens and snaps into focus automatically, when the front board is drawn down. Because it can be brought into use so quickly, it is possible to secure many unusual and interesting pictures that would be lost if adjustment of focus was necessary. The camera is quickly closed by pressing the two side arms and raising the bed, which causes the bellows and entire front to compactly refold within the camera body.

The Pocket Premo loads in daylight with Premo Film Packs—just insert a pack, pull out a paper tab, and you are ready—the simplest of all loading devices.

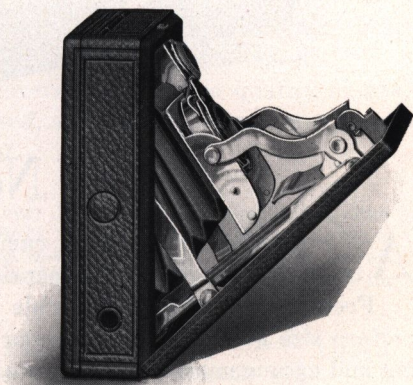


Maximum compactness in the construction of this model is obtained by making the back of the camera collapsible. The back is extended to receive the Premo Film Pack and closes compactly when the Pack is removed. Development of the exposed films is greatly simplified for those wishing to do their own work, by the use of the Premo Film Pack Tank, which assures better negatives and therefore better pictures.

The meniscus achromatic lens fitted to the camera is of excellent quality and carefully adjusted. The pictures it makes are clear and sharp, and enlargements many times larger than the contact prints may be made from the negatives with the Kodak Enlarging Outfit or Brownie Enlarging Camera shown on page 30.

Shutter speeds of  $\frac{1}{25}$  and  $\frac{1}{50}$  of a second, as well as bulb and time exposures, are provided for with the Kodak Ball Bearing Shutter described on page 17.

Covered with a fine quality of grain leather and all metal parts heavily finished in nickel, the Pocket Premo is a very attractive as well as a thoroughly practical pocket camera.

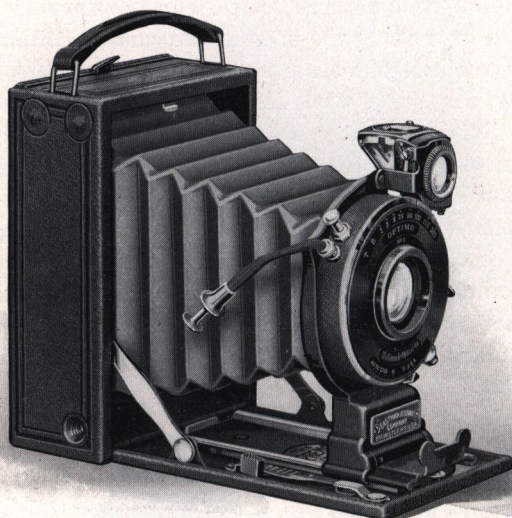


**DETAILS**—Capacity: 12 exposures without reloading. Size of picture:  $2\frac{1}{4} \times 3\frac{1}{4}$ . Dimensions:  $1\frac{1}{4} \times 3\frac{1}{4} \times 4\frac{1}{8}$ . Weight: 18 ozs. Shutter: Kodak Ball Bearing. Lens: Meniscus Achromatic. Finder: Collapsible. Tripod sockets: Two.

### PRICES

	$2\frac{1}{4} \times 3\frac{1}{4}$
Pocket Premo, as per details . . . . .	\$12.50
Carrying Case to hold camera and Premo Film Pack . . . . .	1.60
Premo Film Pack No. 320 (12 exposures) . . . . .	.50
Kodak Portrait Attachment . . . . .	.75





## Premo No. 12

**A**N attractive little pocket camera with features that are unusual in such small dimensions.

Focus as you please with scale and finder or with the full picture size ground glass. The provision for accurate focusing and arrangement of the composition of every picture made, is frequently very helpful in securing the best pictorial effect. If direct focusing and composition of the full size picture is not essential, the focusing pointer is set on the scale at the point indicating the estimated distance.

Quality and convenience, plus the greatest simplicity and rapidity in daylight loading and film changing, are the advantages gained with the use of the Premo Film Pack and Premo Adapter. A special Roll Holder provides for the use of Eastman Graflex Roll Film with the Premo No. 12.

The instantaneous shutter speeds range from  $\frac{1}{5}$  to  $\frac{1}{300}$  of a second, according to the equipment selected, and there are



adjustments for bulb and time exposures. The pictures are  $2\frac{1}{4} \times 3\frac{1}{4}$ , made upon Cartridge Film or Premo Film Packs, but when the subject calls for the use of orthochromatic or panchromatic plates, or any kind of plate for that matter, the camera is equally ready.

The Premo No. 12 is regularly supplied with the Kodak Anastigmat  $f.7.7$  lens, or Rapid Rectilinear lens, mounted in Kodak Ball Bearing Shutter. It is also supplied with a choice of other high-grade Anastigmat Lenses.

With the high speed Anastigmat Lens and Optimo. shutter equipment, permitting a wide range in speed, it is possible to secure successful pictures of unusual and interesting subjects, made under all kinds of conditions, as well as pictures of rapidly moving objects, all of which would be difficult to procure with lens and shutter fittings having less speed.



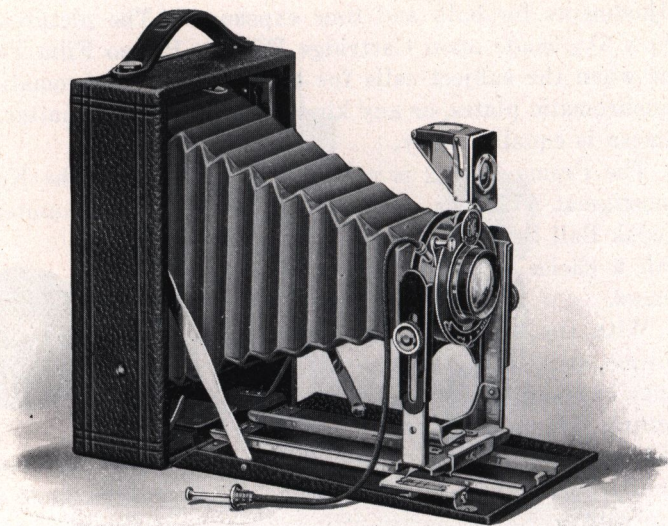
The Premo No. 12 is covered with a fine quality of grain leather handsomely embossed, and all metal parts are finished in nickel and black enamel.

**DETAILS**—Size of picture:  $2\frac{1}{4} \times 3\frac{1}{4}$ . Capacity: 12 film or one plate exposure. Box: Aluminum. Bed: Aluminum, with special lever focusing device. Finder: Brilliant, reversible. Tripod sockets: Two. Dimensions:  $1\frac{5}{8} \times 3\frac{1}{4} \times 4\frac{5}{8}$  in. Weight: 24 ozs.

### PRICES

	$2\frac{1}{4} \times 3\frac{1}{4}$
Premo No. 12 with Kodak Ball Bearing Shutter and R. R. Lens, including Film Pack Adapter and Plate Holder	\$22.00
With Kodak Anastigmat Lens, $f.7.7$ and B. B. Shutter	27.00
With Optimo Shutter and Kodak Anastigmat Lens, $f.6.3$ , $4\frac{3}{8}$ -inch focus	50.00
With B. & L. Kodak Anastigmat Lens, $f.6.3$ , $4\frac{5}{8}$ -inch focus	65.00
With B. & L. Tessar. Ser. IIb Lens, $f.6.3$ , $4\frac{5}{8}$ -inch focus	80.00
With B. & L. Tessar, Ser. Ic Lens, $f.4.5$ , $3\frac{1}{2}$ -inch focus	80.00
Carrying Case, velvet lined	4.50
Single Plate Holders, each	.75
Premo Film Pack No. 320 (12 exposures)	.50
Special Roll Holder, interchangeable with Plate Holder	15.00





## Premo No. 8

**T**HIS camera goes a little farther than any of the preceding models of Premo cameras toward widening the scope of amateur work.

Plates or films, whichever is most convenient or best suited to the character of the subject, can be used interchangeably. Any of the brands of plates, including Orthochromatic, Panchromatic or the Rapid Graflex Plates, are loaded into the regular Premo Plate Holder. The Premo Film Pack Adapter, loaded with a Premo Film Pack, and used just like a plate holder, converts this camera into a daylight loading instrument, with all the advantage of film quality and convenience.

Every picture can be accurately focused and composed upon the ground-glass focusing screen in the camera back—the rising and falling front serving to adjust the amount of sky and foreground required in the picture. While direct



focusing in full picture size is frequently desirable, it is not always convenient or possible, and the lens in such cases is focused with the graduated scale and either vertical or horizontal pictures are centered with the brilliant view finder.

The Premo No. 8 is made for the three larger popular size pictures— $3\frac{1}{4} \times 5\frac{1}{2}$ ,  $4 \times 5$  and  $5 \times 7$  inches. The proportions of these sizes are well suited for landscape or figure work.

Regularly fitted with standard Planatograph lens, and the Kodak Ball Bearing Shutter, which is graduated for speeds of  $\frac{1}{25}$ ,  $\frac{1}{50}$  and  $\frac{1}{100}$  of a second, as well as bulb and time exposures, the Premo No. 8 will prove highly satisfactory for everyday picture making.

At a slight additional cost, the model of the Premo No. 8 making  $3\frac{1}{4} \times 5\frac{1}{2}$  pictures (post card size) is furnished with the Kodak Anastigmat *f*.7.7 lens, providing greater speed and unusual definition throughout the negatives.

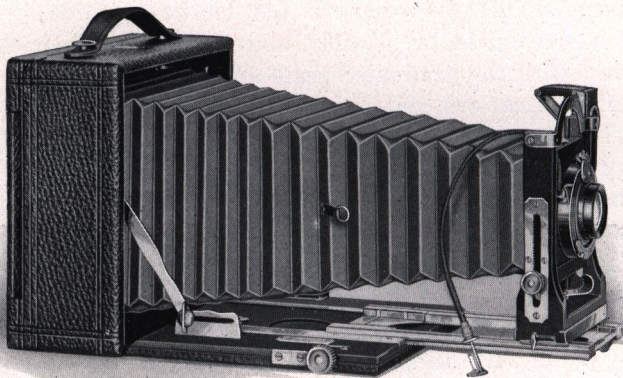
The body of the camera is made of seasoned wood, the front bed of aluminum. The body and bed are covered with black grain leather; the bellows are black and the metal parts are finished in polished nickel, giving the camera a neat and attractive appearance.

**DETAILS**—Capacity: 12 film or 2 plate exposures. Body: Seasoned wood, covered with leather. Standard: Made of Metal with rising and falling front. Finder: Reversible, brilliant, collapsible. Tripod sockets: Two. Dimensions:  $3\frac{1}{4} \times 5\frac{1}{2}$ ,  $2 \times 5 \times 7\frac{1}{4}$  in.;  $4 \times 5$ ,  $2 \times 5\frac{1}{4} \times 6\frac{1}{2}$  in.;  $5 \times 7$ ,  $2\frac{1}{4} \times 6\frac{1}{2} \times 8\frac{1}{2}$  inches. Weight:  $3\frac{1}{4} \times 5\frac{1}{2}$ , 34 ozs.;  $4 \times 5$ , 30 ozs.;  $5 \times 7$ , 42 ozs. Carrying Case: Imitation leather, with compartments for holders.

### PRICES

	4x5	3A 3 1/4 x 5 1/2	5x7
Premo No. 8, with Planatograph Lens, Kodak Ball Bearing Shutter, Carry- ing Case and Plate Holder . . . .	\$25.00	\$25.00	\$35.00
With Kodak Anastigmat Lens, <i>f</i> .7.7 . . . .		30.00	
Premo Film Pack Adapter . . . .	2.00	2.00	3.00
Premo Film Pack No. 323 for $4 \times 5$ , No. 322 for $3\frac{1}{4} \times 5\frac{1}{2}$ , No. 315 for $5 \times 7$ (12 exposures) . . . .	1.10	1.10	1.90
Kodak Portrait Attachment . . . .	.75	.75	.75





## Premo No. 9

**T**HE bellows capacity of the Premo No. 9 permits the closer approach required for great detail, and for copying to nearly full size, with the regular lens equipment. It also accommodates the long focus combinations of the Planatograph lens, used for large reproductions of distant objects, and for securing better perspective in pictures of small subjects—that is, pictures that show each part in correct relative size and proportion.

The Swing-Bed, Reversible Back, Rising and Falling Front, and Focusing Pinion, adapt the camera to accurate photographic reproduction of architectural and similar objects, and these adjustments are also helpful, if not essential, when making general views. When it is necessary to tilt the camera in order to properly include in the composition, tall buildings and like subjects, the vertical lines are accurately reproduced by a simple adjustment of the swing-bed. If the required result cannot be obtained by tilting and adjusting the swing-bed, with the back in vertical position, then the rising and falling front is brought into use for final vertical arrangement of the composition upon the ground-glass panel. Fine focusing is done with the rack and pinion which moves the bed plate.



Plates or film, whichever is preferred, may be used in the Premo No. 9: Plates carried in the regular Premo Plate Holder and Premo Film Packs in the Premo Adapter.

The regular fitting of the Premo No. 9 comprises the Planatograph lens and the Kodak Ball Bearing Shutter. The 3A and 4 x 5 sizes are offered at a slight increase in price fitted with Kodak Anastigmat Lens *f*.7.7 and Kodak Ball Bearing Shutter. For those who wish greater lens and shutter speed, the Kodak Anastigmat *f*.6.3 and Optimo Shutter, will be found highly efficient.

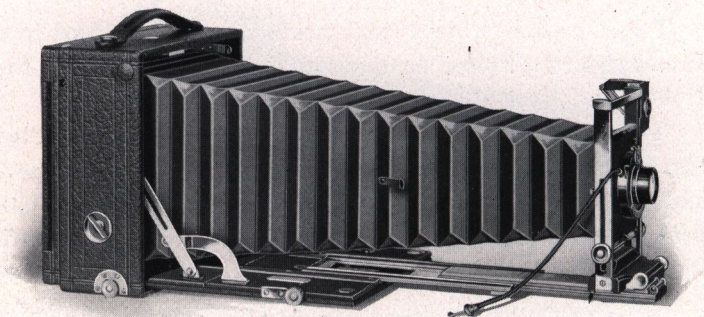
The covering of the body is selected black grain leather and the bed is in polished ebony finish. All metal parts are heavily nicked and polished. The Premo No. 9 is altogether a very attractive and practical camera for those wishing to do serious photographic work.

**DETAILS**—Capacity: 12 film or 2 plate exposures. Body: seasoned wood, covered with grain leather. Bed: Wood, finished in polished black ebony; rack and pinion for fine focusing; swing back. Back: Spring catch, reversible. Standard: Wood, with rising and falling front. Finder: Brilliant, reversible, collapsible. Tripod socket: One. Bellows: Black leather; draw,  $3\frac{1}{4} \times 5\frac{1}{2}$ , 13 in.; 4 x 5, 13 in.; 5 x 7,  $15\frac{1}{4}$  in. Dimensions:  $3\frac{1}{4} \times 5\frac{1}{2}$ , 3 x 7 x 7 in.; 4 x 5, 3 x 7 x 7 in.; 5 x 7,  $2\frac{7}{8} \times 8\frac{1}{4} \times 8\frac{1}{4}$  in. Weight:  $3\frac{1}{4} \times 5\frac{1}{2}$ , 63 ozs.; 4 x 5, 63 ozs.; 5 x 7, 76 ozs.

### PRICES

	4x5	3A $3\frac{1}{4} \times 5\frac{1}{2}$	5x7
Premo No. 9, with Planatograph Lens, Kodak Ball Bearing Shutter, Case and Holder . . . . .	\$45.00	\$45.00	\$55.00
With Kodak Anastigmat Lens, <i>f</i> .7.7 . . . . .	50.00	50.00	
With Kodak Anastigmat Lens, <i>f</i> .6.3, and Optimo Shutter . . . . .	75.00	75.00	
With B. & L. Kodak Anastigmat Lens, <i>f</i> .6.3, and Optimo Shutter . . . . .	85.00	90.00	120.00
Premo Film Pack Adapter . . . . .	2.00	2.00	3.00
Premo Film Pack No. 323 for 4 x 5, No. 322 for $3\frac{1}{4} \times 5\frac{1}{2}$ , No. 315 for 5 x 7 (12 exposures) . . . . .	1.10	1.10	1.90
Kodak Portrait Attachment . . . . .	.75	.75	.75





## Premo No. 10

**D**ESIGNED to meet the requirements of technical photographic work, the Premo No. 10 is equipped with every mechanical adjustment required.

The long bellows draw will accommodate the single combinations of any lens system. Wide angle lenses may be used by dropping the bed and substituting the short supplementary bed furnished with the camera. The swing-back and rising and falling front permit the correct composition of architectural subjects. Films or plates may be used with equal facility.

**DETAILS**—Capacity: 12 film or 2 plate exposures. Body: Hard wood, leather covered. Bed: Wood, polished ebony finish. Back: Spring catch, reversible. Swing: Vertical; rack and pinion actuated, with locking device. Front: Metal, with rising and falling rack and pinion and locking device. Lens Board: Removable, size,  $3\frac{1}{2} \times 3\frac{1}{2}$  in. Finder: Brilliant, reversible. Tripod sockets: Two. Carrying Case: Sole leather, plush lined, with compartments for holders. Bellows: Black leather; draw, 19 in. Dimensions:  $4 \times 8\frac{1}{2} \times 8\frac{1}{2}$ . Weight,  $5\frac{1}{2}$  lbs.

### PRICES

	5x7
Premo No. 10, with Planatograph Lens and Kodak Ball Bearing Shutter, Carrying Case and Plate Holder	\$95.00
With Bausch & Lomb Kodak Anastigmat Lens, <i>f</i> .6.3, No. 5 and Optimo Shutter	165.00
With B. & L. Protar VIIa Lens, <i>f</i> .7, No. 8 and Optimo Shutter	210.00
Premo Film Pack Adapter	3.00
Premo Film Pack No. 315 (12 exposures)	1.90



# Kodak Ball Bearing Shutter

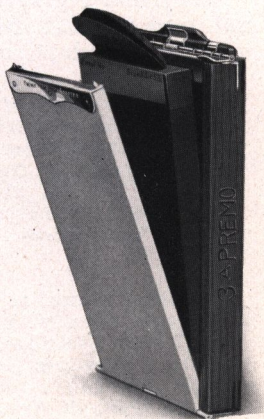
IS AUTOMATIC and does not require setting. Its leaves running on ball bearings open and close in a star-shaped aperture admitting the maximum of light. Smooth and reliable in action. Operated by cable or finger release and has an Iris diaphragm. The illustration shows the shutter for cameras with Kodak Anastigmat lens  $f.7.7$ , but all models work on the same system. The No. 0, fitted to Premoette Jr., with single or R. R. lens; Pocket Premo and Pocket Cartridge Premo No. 2 has time and bulb actions and speeds of  $\frac{1}{25}$  and  $\frac{1}{50}$  seconds but no cable release.



The No. 1 shutter supplied with Premoette Jr.,  $f.7.7$  lens; 1A and 3 Premoette Senior R. R. and  $f.7.7$ , works at  $\frac{1}{25}$ ,  $\frac{1}{50}$  and  $\frac{1}{100}$  of a second and has cable release.

## Premo Film Pack Adapter

THE Premo Film Pack Adapter converts any plate camera that will take a Premo Plate Holder, into a daylight loading camera. It slips into the back of the camera as easily as a plate holder but instead of two glass plates it carries a Premo Film Pack of twelve exposures, effecting a great saving in weight and bulk. Fitted with a dark-slide the Adapter may be removed between exposures for ground-glass focusing or for the removal of one or two films for development immediately after exposure. The Adapter offers the quickest method for loading a camera with twelve exposures and for changing films between exposures.



Size	Price	Size	Price
$2\frac{3}{4} \times 3\frac{1}{4}$ .....	\$1.50	3-A ( $3\frac{1}{4} \times 5\frac{1}{2}$ )	\$2.00
$3\frac{1}{4} \times 4\frac{1}{4}$ .....	1.50	$4 \times 5$ .....	2.00
$3 \times 5\frac{1}{4}$ .....	2.00	$5 \times 7$ .....	3.00





Nos. 2 and 2A

## Cartridge Premos

**T**HE lens used in these cameras is so fitted as to be always in focus and the shutter is always set ready to use. The Cartridge Premo will appeal to those who wish to make pictures on roll film in the easiest way and at minimum expense.

They take regular Eastman N. C. film cartridges and load and unload in full daylight. The exposed film may be developed by the "daylight-all-the-way" method.

**DETAILS**—Size of pictures: No. 2,  $2\frac{1}{4} \times 3\frac{1}{4}$  in.; No. 2A,  $2\frac{1}{2} \times 4\frac{1}{4}$  in. Capacity: No. 2, 6 exposures without reloading; No. 2A, 12 exposures without reloading. Size of camera: No. 2,  $5\frac{3}{4} \times 4 \times 3\frac{1}{4}$  in.; No. 2A,  $3\frac{3}{8} \times 5\frac{1}{8} \times 6\frac{1}{4}$  in. Weight: No. 2, 16 ozs.; No. 2A, 21 ozs. Lens: No. 2, Meniscus; No. 2A, Meniscus Achromatic. Shutter: Eastman Rotary, with three stops. Two finders.

### PRICES

	No. 2	No. 2A
Cartridge Premo, as per details . . . . .	\$2.50	\$3.50
Carrying Case, with shoulder strap . . . . .	1.35	1.70
N. C. Film Cartridge, 12 exposures (No. 116) . . . . .		.60
Ditto, 6 exposures (No. 120 for No. 2; No. 116 for No. 2A) . . . . .	.25	.30
Kodak Portrait Attachment . . . . .	.75	.75





## No. 2C Cartridge Premo

**T**HE pictures this camera makes are of pleasing proportions— $2\frac{7}{8} \times 4\frac{7}{8}$  inches.

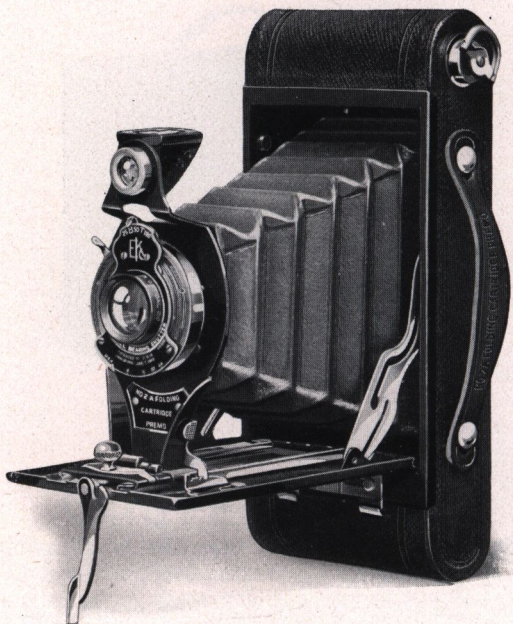
Fitted with a single lens of standard quality, and an automatic shutter, the camera is always ready for instant use, as no focusing or estimating of distance is required. The 2C Model is similar to the 2 and 2A sizes, and likewise uses daylight loading Eastman Cartridge Film.

***DETAILS***—Capacity: 10 exposures without reloading. Size of camera:  $3\frac{3}{8} \times 6 \times 7\frac{1}{4}$  in. Weight: 25 oz. Lens: Meniscus Achromatic,  $5\frac{1}{2}$ -inch focus. Shutter: Eastman Rotary, with three stops. Two finders. Two tripod sockets.

### ***PRICES***

No. 2C Cartridge Premo, Meniscus Achromatic Lens,	
Eastman Rotary Shutter . . . . .	\$5.00
Carrying Case with shoulder strap . . . . .	1.80
N. C. Film Cartridge, 10 exposures (No. 130) . . . . .	.75
Ditto, 6 exposures (No. 130) . . . . .	.45
Kodak Portrait Attachment . . . . .	.75





Nos. 2 and 2A

## Folding Cartridge Premos

**R**OLL film quality and convenience in a folding pocket camera of the most practical simplicity is the idea behind the Cartridge Premo.

These cameras are constructed on a very simple principle for loading and unloading in daylight with Eastman N. C. Film Cartridges, and they will appeal to those desiring a practical, compact, inexpensive camera that will meet the requirements of amateur picture making.

The proportions of the pictures lend themselves especially well to portraiture as well as to the average picture-making opportunities throughout the year. Fitted with a Kodak Por-



trait Attachment, either one of these cameras can be brought close up to the subject for home portraits.

The lenses fitted to the cameras are of such excellent quality that the amateur can easily make enlargements from favorite negatives, with the Brownie Enlarging Camera or Kodak Enlarging Outfit described on page 30.

Alike in general appearance and operation, the 2 and 2A models differ in the size of the pictures they make, and slightly in lens and shutter equipment. The No. 2 is regularly fitted with a meniscus achromatic lens and a No. 0 Kodak Ball Bearing Shutter. This shutter may be adjusted for time and bulb exposures, and instantaneous speeds of  $\frac{1}{25}$  and  $\frac{1}{50}$  of a second. It has no cable release. The No. 2A is regularly fitted with a meniscus achromatic lens mounted in a No. 1 Kodak Ball Bearing Shutter which is *without* cable release. This shutter operates like the No. 0 but also has the speed of  $\frac{1}{100}$  of a second. Both sizes are covered with a fine imitation leather.



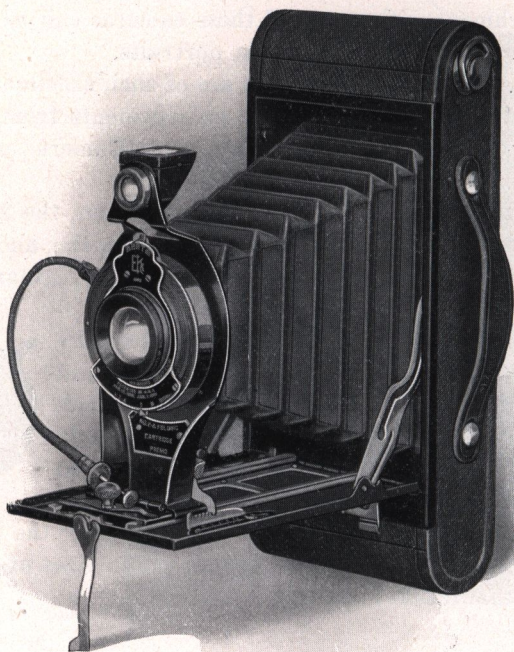
**DETAILS**—No. 2: Size of pictures,  $2\frac{1}{4} \times 3\frac{1}{4}$  in. Capacity: 6 exposures without reloading. Body: Steel. Size of camera:  $1\frac{1}{4} \times 3\frac{1}{8} \times 6\frac{1}{2}$  in. Weight: 19 ozs. Lens:  $3\frac{1}{2}$ -inch focus. Shutter: Kodak Ball Bearing. Reversible finder, two tripod sockets, automatic focusing lock, black bellows.

No. 2A: Size of pictures,  $2\frac{1}{2} \times 4\frac{1}{4}$  in. Capacity: 12 exposures without reloading. Body: Steel. Size of camera:  $1\frac{7}{8} \times 3\frac{3}{8} \times 7\frac{7}{8}$  in. Weight: 25 ozs. Lens:  $4\frac{1}{4}$ -inch focus. Shutter: Kodak Ball Bearing (See page 17). Reversible finder, two tripod sockets, automatic focusing lock, black bellows.

### PRICES

	No. 2	No. 2A
Folding Cartridge Premo, Meniscus Achromatic	\$8.00	\$9.00
With R. R. Lens . . . . .	10.00	11.00
Cartridge Premo Carrying Case . . . . .	1.70	1.80
N. C. Film Cartridge, 12 exposures (No. 116) . . . . .		.60
Ditto, 6 exposures (No. 120 for No. 2, No. 116 for No. 2A) . . . . .	.25	.30
Kodak Portrait Attachment . . . . .	.75	.75





Nos. 2C and 3A

## Folding Cartridge Premos

**T**HESE cameras load with standard Eastman N. C. Film Cartridges. This is not only an assurance of quality results, but it means that every process—loading, unloading and development of the film—can be performed in daylight, eliminating the dark-room. Development of film by the time and temperature method, in a Kodak Film Tank, means better negatives and better pictures.

Both sizes are supplied fitted with a single Meniscus Achromatic or Rapid Rectilinear lens, mounted in a No. 1 Kodak



Ball Bearing Shutter. The shutter operates at speeds of  $\frac{1}{25}$ ,  $\frac{1}{50}$  and  $\frac{1}{100}$  of a second as well as bulb and time exposures.

The body of the camera is made of aluminum, which means strength and light weight. The standard is so formed as to be unusually rigid, and all metal parts are finished in polished nickel and black enamel. The camera body is covered with a fine imitation leather. The finder is reversible, and two tripod sockets are provided for prolonged exposures. The automatic focusing lock permits the lens to be instantly and securely set at any selected distance.

Carefully made of first quality material, these cameras receive the same rigid tests for reliability as are applied to all Eastman products. It is only through a long perfected factory organization and production in large quantities, that cameras of such exceptional quality may be offered at such moderate prices.

The shape of the negatives made by these cameras is very appropriate for portraiture. The Kodak Portrait Attachment adapts either of the cameras to home portraiture.

*DETAILS*—No. 2C: Size of pictures,  $2\frac{7}{8} \times 4\frac{7}{8}$  in. Capacity: 10 exposures without reloading. Body: Aluminum. Size of camera:  $1\frac{3}{4} \times 3\frac{3}{8} \times 8\frac{5}{8}$  in. Weight: 28 ozs. Lens: 5-inch focus. Shutter: Kodak Ball Bearing (See page 17).

No. 3A: Size of pictures,  $3\frac{1}{4} \times 5\frac{1}{2}$  in. Capacity: 10 exposures without reloading. Body: Aluminum. Size of camera:  $1\frac{3}{4} \times 4\frac{5}{8} \times 9\frac{5}{8}$  in. Weight: 28 ozs. Lens:  $5\frac{3}{8}$ -inch focus. Shutter: Kodak Ball Bearing.

### PRICES

	No. 2C	No. 3A
Folding Cartridge Premo, Meniscus Achromatic	\$12.50	\$14.00
Ditto, with R. R. Lens . . . . .	15.00	16.50
Cartridge Premo Carrying Case . . . . .	1.90	2.00
N. C. Film Cartridge, 10 exposures (No. 130 for No. 2C, No. 122 for 3A) . . . . .	.75	.90
Ditto, 6 exposures . . . . .	.45	.55
Kodak Portrait Attachment . . . . .	.75	.75



# Kodak Portrait Attachments and Kodak Sky and Color Filters

THE Kodak Portrait Attachment is simply an extra lens, which slips on the front of the regular lens, and permits working with the camera close to the subject, thus making a larger image than could otherwise be made. It is especially useful in making home portraits, flower and plant studies.

The upper half of the *Kodak Sky Filter* is stained yellow, and serves to equalize the intensity of light transmitted by sky and foreground in landscape photography. The *Kodak Color Filter* is stained yellow throughout, and serves to equalize the light values of different colors.

## PRICES

Order by						Portrait Sky & Attach- Color
No.	For	Camera	Lens			ment Filter
0	For	No. 1	Premo Jr.	Single lens		\$0.75 \$0.75
0	"	" 1A	"	Single	"	.75 .75
3	"	" 3	"	Single	"	.75 1.15
3	"	" 1	Premoette Jr.	f.7.7	"	.75 1.15
8	"	" 1	"	Single	"	.75 .75
8	"	" 1	"	R. R.	"	.75 .75
3	"	Premoette Sr.	2 1/2 x 4 1/4	R. R.	"	.75 1.15
13	"	"	2 1/2 x 4 1/4	f.7.7	"	.75 1.15
3	"	"	3 1/4 x 4 1/4	R. R.	"	.75 1.15
13	"	"	3 1/4 x 4 1/4	f.7.7	"	.75 1.15
5	"	"	3 1/4 x 5 1/2	R. R.	"	.75 1.50
7	"	"	3 1/4 x 5 1/2	f.7.7	"	.75 1.50
8	"	Pocket Premo	"	Single	"	.75 .75
8	"	No. 12	"	R. R.	"	.75 .75
6	"	" 12	"	Kodak Anastigmat f.6.3	"	.75 1.15
6	"	" 12	"	All B. & L. Anastigmats	"	.75 1.15
3	"	" 12	"	f.7.7 lens	"	.75 1.15
5	"	" 8	" 4 x 5	R. R.	"	.75 1.50
5	"	" 8	" 3 1/4 x 5 1/2	R. R.	"	.75 1.50
5	"	" 8	" 5 x 7	R. R.	"	.75 1.50
7	"	" 8	" 3 1/4 x 5 1/2	f.7.7	"	.75 1.50
5	"	" 9	" 4 x 5	R. R.	"	.75 1.50
5	"	" 9	" 3 1/4 x 5 1/2	R. R.	"	.75 1.50
5	"	" 9	" 5 x 7	R. R.	"	.75 1.50
7	"	" 9	" 4 x 5	f.7.7	"	.75 1.50
7	"	" 9	" 3 1/4 x 5 1/2	f.7.7	"	.75 1.50
5	"	" 10	" 5 x 7	R. R.	"	.75 1.50
0	"	" 2	Box Cartridge Premo	Single	"	.75 .75
0	"	" 2A	"	Single	"	.75 .75
4	"	" 2C	"	Single	"	.75 1.15
8	"	" 2	Folding Cartridge Premo	Single	"	.75 .75
8	"	" 2	"	R. R.	"	.75 .75
3	"	" 2A	"	Single	"	.75 1.15
3	"	" 2A	"	R. R.	"	.75 1.15
5	"	" 2C	"	Single	"	.75 1.50
5	"	" 2C	"	R. R.	"	.75 1.50
5	"	" 3A	"	Single	"	.75 1.50
5	"	" 3A	"	R. R.	"	.75 1.50



# Premo Plate Holder

**P**REMO holders are made absolutely light tight by a spring finger light-lock. This device is constructed of tempered, non-corrosive metal with independently operating spring fingers overlaid with a closely woven, specially prepared fabric. The dark slide can be inserted or withdrawn without admitting light to the plate. Fitted with lacquered press-board slides that will not electrify, collect dust, crack or split.



2 1/4 x 3 1/4 (Single)	\$0.75	3 1/4 x 5 1/2	.....\$1.50	5 x 7	.....\$1.75
3 1/4 x 4 1/4	..... 1.50	4 x 5	..... 1.50	6 1/2 x 8 1/2	..... 2.00

# Premo Film Packs

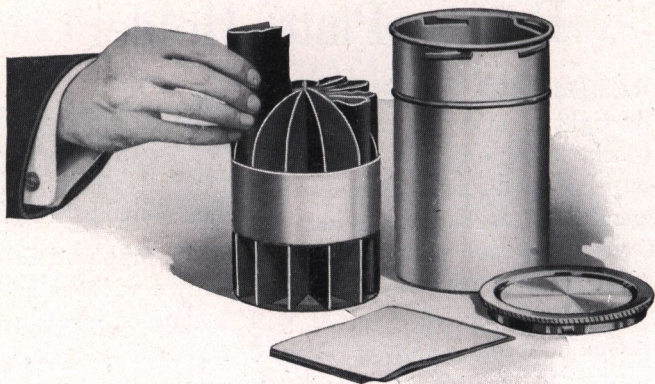


**Q**UANTITY and convenience—plus the greatest simplicity and rapidity in daylight loading and film changing, are the exceptional advantages of the Premo Film Pack.

Each Pack contains 12 exposures of Eastman N. C. Film, which is non-curling, non-halation, and properly orthochromatic. The gradation and fineness of grain is of the highest quality.

	Inches	Centimeters	Per Pack
No. 300	1 5/8 x 2 7/8	4 1/2 x 6	\$0.35
No. 320	2 1/4 x 3 1/4	6 x 9	.50
No. 316	2 1/2 x 4 1/4	6 1/2 x 11	.60
No. 318	3 1/4 x 4 1/4	8 x 10 1/2	.90
No. 342	3 x 5 1/4	7 1/2 x 13 1/2	1.00
No. 322	3 1/4 x 5 1/2	8 x 14	1.10
No. 323	4 x 5	10 x 12 1/2	1.10
No. 315	5 x 7	13 x 18	1.90





## Premo Film Pack Tank

**T**HE modern method of development greatly simplifies negative making for anyone wishing to do their own work. But more important still, it makes better negatives, which lead directly to better pictures.

Considerable thought and care are usually exercised in making pictures on the vacation trip and about the home, and to the pleasure of picture making can be added the pleasure of negative making, with the Premo Film Pack Tank.

The entire outfit is self-contained and can be easily carried in a suitcase, making it possible to develop negatives immediately after exposure, and before leaving the locality in which the exposures were made.

The Premo Film Pack Tank consists of two pieces—a metal receiver, or cage for the films, and a tank with cover, for the developing solution. The cage is divided into twelve compartments;—in the 5 x 7 size, six compartments—each accommodating one film. As the film is taken from the pack, it is slightly curved and slipped into one of the compartments. When all the compartments are filled, the cage is placed in the tank, which has previously been filled with a developing solution of definite strength, at a definite temperature. The top of the tank is then attached, and the films are permitted to develop for a definite time. It is only necessary to follow the



simple instructions provided. No further attention is necessary except to turn the tank end for end several times during the period of development. At the expiration of this period, the tank is opened, the cage removed and the films rinsed in a tray of water, then transferred to a fixing bath.

The operation of removing films from the pack and loading into the developing cage, must be done in a darkened room, with the aid of a ruby lamp that is photographically safe. During the day, any darkened closet will suffice; at night, almost any room with the shades drawn, will answer. Any of the dark-room lamps, listed on page 39, will give a photographically safe light.

Loading the films into the cage requires but a few minutes, and as soon as the top is placed on the tank, it may be brought into the white light for the period of the development. Night is really an ideal time to develop films, as the negatives can be fixed and washed in a short time, and will be dry in the morning, ready for print making.

If it is desired to develop less than a dozen films, one merely removes from the pack as many films as have been exposed, places them in the cage, and proceeds in the same manner as described above.

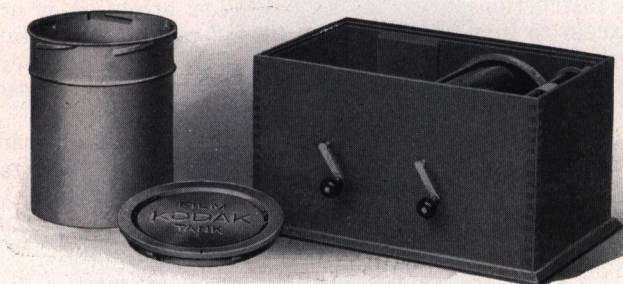
The cage of the No. 1 Tank is slightly different from that shown in the illustration, but the method of loading is the same and the results are just as dependable in every respect.

Particular attention is called to the necessity of using Premo Tank developing powders for normal development in Premo Film Pack Tanks. If Kodak Tank powders are used, a longer time for development must be given.

### PRICES

Premo Film Pack Tank No. 1, for 12 $1\frac{3}{4}$ x $2\frac{3}{8}$ or $2\frac{1}{4}$ x $3\frac{1}{4}$ films . . . . .	\$1.75
Ditto, No. 2, for 12 $2\frac{1}{2}$ x $4\frac{1}{4}$ , $3\frac{1}{4}$ x $4\frac{1}{4}$ , 3 x $5\frac{1}{4}$ , $3\frac{1}{4}$ x $5\frac{1}{2}$ or 4 x 5 films . . . . .	4.00
Ditto, No. 3, for 6 5 x 7 films . . . . .	4.50
Premo Tank Developing Powders, package of 6, No. 1 . . . . .	.25
Premo Tank Developing Powders, package of 6, No. 2 . . . . .	.35
Premo Tank Developing Powders, package of 6, No. 3 . . . . .	.50
Kodak Acid Fixing Powder, per 1 pound package . . . . .	.35
Ditto, per $\frac{1}{2}$ pound package . . . . .	.20
Ditto, per $\frac{1}{4}$ pound package . . . . .	.15





## Kodak Film Tank

FOR the convenience of those using Eastman Daylight Loading Film Cartridges—completing the “daylight-all-the-way” method of negative making. The Kodak Film Tank develops roll film automatically and in broad daylight, eliminating the necessity for a dark room. The film cartridge to be developed is attached to a bracket in the winding box, to which the cover is then attached, and in this darkened chamber the exposed film is wound into a light-proof apron which fully protects it, permitting safe removal from the winding box. The apron containing the film is then lowered into the metal solution cup, filled with a standard developer, at a certain temperature. The metal cover is attached and the film is permitted to develop for twenty minutes. After development, the film is removed from the apron for fixing and washing.

It is all very simple and the result is—better negatives and better pictures.

### PRICES

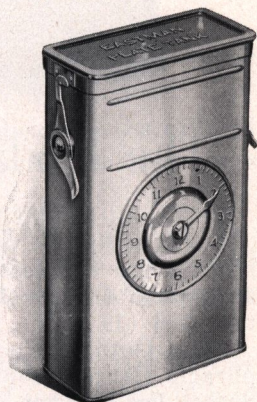
Brownie Kodak Film Tank, for use with No. 2 and No. 2 Folding Cartridge Premo Cartridges, complete	\$4.00
2½-inch Kodak Film Tank, for use with all cartridges having a film width of 2½ inches or less, complete	5.00
3½-inch Kodak Film Tank, for use with all cartridges having a film width of 3½ inches or less, complete	6.00
Kodak Tank Developer Powders for Brownie Kodak Film Tank, per package ½ dozen	.20
Ditto, for 2½-inch tank, per package, ½ dozen	.25
Ditto, for 3½-inch tank, per package, ½ dozen	.25



# Eastman Plate Tank

**P**lates may be developed in the Eastman Plate Tank with the same certainty of excellent results obtained with films developed in the Premo Film Pack Tank or a Kodak Tank. The method is precisely the same, with of course such differences as are necessary because of the physical differences between films and plates.

It consists of a metal solution cup, a cage for holding twelve (or less) plates and a simple device for loading plates into the cage. In the  $3\frac{1}{4} \times 4\frac{1}{4}$ ,  $3\frac{1}{4} \times 5\frac{1}{2}$  and  $4 \times 5$  sizes, the cage of plates may be developed in a Premo Film Pack Tank, so that one using a Premo that takes films or plates and has also a Premo Film Pack Tank, needs only to purchase the cage of the plate tank for the development of his plates.

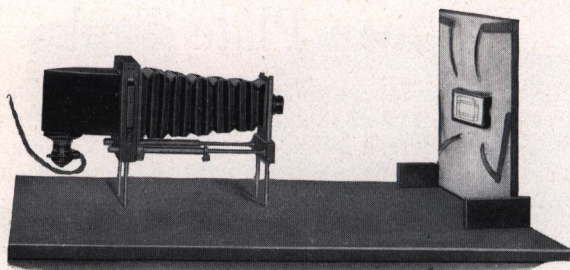


It is thus apparent that the owner of a Premo plate camera can use films or plates in his camera and also can avail himself of the advantages of tank development with equal facility.

## PRICES

Eastman Plate Tank for $4 \times 5$ , $3\frac{1}{4} \times 5\frac{1}{2}$ or smaller plates, including Solution Cup, Plate Cage, Loading Fixture and Adjustable Kit . . . . .	\$4.50
Ditto, $5 \times 7$ , without Kit . . . . .	7.00
Ditto, $8 \times 10$ , with Adjustable Kit . . . . .	14.00
Adjustable Kit for $4 \times 5$ or $3\frac{1}{4} \times 5\frac{1}{4}$ Tank, to take smaller plates . . . . .	.60
Kits for $5 \times 7$ Tank, to take $3\frac{1}{4} \times 5\frac{1}{2}$ , $4\frac{1}{4} \times 6\frac{1}{2}$ or $4\frac{3}{4} \times 6\frac{1}{2}$ plates, each . . . . .	1.00
Extra Adjustable Kit for $8 \times 10$ Plate Tank . . . . .	1.25
Plate Cage and Loading Fixture for $4 \times 5$ and $3\frac{1}{4} \times 5\frac{1}{2}$ plates (can be used in a $4 \times 5$ Premo Film Pack Tank) . . . . .	1.50
Eastman Plate Tank Powders, for $4 \times 5$ Tank, per package, $\frac{1}{2}$ dozen . . . . .	.25
Ditto, for $5 \times 7$ Tank, per package, $\frac{1}{2}$ dozen . . . . .	.50
Ditto, for $8 \times 10$ Tank, per package, $\frac{1}{2}$ dozen . . . . .	1.20
Kodak Acid Fixing Powder, per 1-pound package . . . . .	.35
Ditto, per $\frac{1}{2}$ -pound package . . . . .	.20
Ditto, per $\frac{1}{4}$ -pound package . . . . .	.15





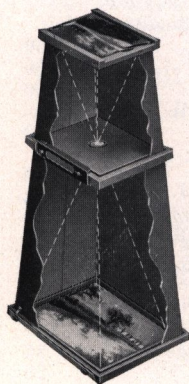
## The Kodak Enlarging Outfit

A THOROUGHLY practical equipment for the amateur who wishes to make his own enlargements. The Negative Carrier will accommodate film or plate negatives of any size within 4 x 6 inches, and enlargements within the size of the easel (14 x 17), may easily be made.

The Outfit includes Enlarging Camera, Lens and Diaphragm (largest stop U. S. 4), Lamp House, Cord, Plug and Socket, but does not include the 60-Watt Mazda Electric Bulb.

Kodak Enlarging Outfit..... \$23.00

## Brownie Enlarging Camera



THE improved Brownie Enlarging Camera consists of a light-tight cone with attachments to hold a negative at the small end, and a sheet of Bromide or Velox paper at the other. The cameras, with the exception of the No. 2 Brownie Post-card, are collapsible, and may be folded flat for storage.

No. 2 Brownie Post Card Enlarging Camera for post card ( $3\frac{1}{4} \times 5\frac{1}{2}$ ) enlargements from $2\frac{1}{4} \times 3\frac{1}{4}$ negatives.....	\$3.75
No. 2 Brownie Enlarging Camera, for 5 x 7 enlargements from $2\frac{1}{4} \times 3\frac{1}{4}$ negatives.....	5.00
No. 3 Ditto, for $6\frac{1}{2} \times 8\frac{1}{2}$ enlargements from $3\frac{1}{4} \times 4\frac{1}{4}$ negatives.....	6.50
No. 3A Ditto, for 7 x 11 enlargements from $3\frac{1}{4} \times 5\frac{1}{2}$ negatives or $6\frac{1}{4} \times 10\frac{1}{2}$ enlargements from $2\frac{3}{8} \times 4\frac{3}{8}$ negatives.....	7.00
No. 4 Ditto, for 8 x 10 enlargements from 4 x 5 negatives or $6\frac{3}{8} \times 10$ enlargements from $3\frac{1}{4} \times 5\frac{1}{2}$ negatives .....	7.00



# Eastman Bromide Papers

Eastman Permanent Bromide Papers, since their introduction more than thirty years ago, have been considered standard by the photographic public and testimony to their superiority is constantly being received.

Following are the descriptions of the several grades and surfaces in which Eastman Bromide Papers are made.

“VELVET” has a semi-gloss surface which gives to the shadows of the enlarged pictures a pleasing brilliance.

“BRILLIANT VELVET” is a duplicate of the original velvet so far as surface is concerned, but the emulsion gives a high degree of contrast.

“STANDARD” is made in three grades, as follows: A—thin smooth; B—heavy smooth; C—heavy rough. A natural surface stock is used which lends itself to special finishing in oils, water colors, crayon or pastel work.

“MATTE-ENAMEL” produces prints with rich velvety blacks on a smooth, matte surface, tinted just enough to lend warmth to the highlights and half-tones.

“ENAMELED” has a high glossy surface; medium weight stock.

“ROYAL” is offered in two surfaces, Smooth and Rough, on a medium weight buff colored stock. Royal is the favorite paper for Sepia enlargements, in which it gives prints of unsurpassed richness and tone.

Size	Per Doz.	Size	Per Doz.	Size	Per Doz.
5 x7	.50	8x10	\$1.10	14x17	\$3.15
5 x8	.55	10x12	1.70	16x20	4.20
6 ½ x8 ½	.80	11x14	2.10	18x22	5.25

Bromide Post Cards for enlargements from V.P.K. and 2¼ x 3¼ film negatives by means of the V.P.K. Enlarging Camera and the No. 2 Brownie Post Card Enlarging Camera may be had in two surfaces—Matte and Glossy—price 25 cents per dozen.



# Kodak Amateur Printer

A CONVENIENT and practical printer for making prints upon developing-out paper. Prints may be made with white margins in any size from  $1\frac{5}{8} \times 2\frac{1}{2}$  to  $4 \times 5\frac{1}{2}$  inches, by means of the adjustable masking device, which also holds the negative firmly until released.

A small, red electric lamp within the box enables the operator to properly place the negative and paper. When ready for exposure, the hinged pressure board is closed and locked, and a 60-Watt Mazda Lamp, for which provision is made, is automatically lighted. The window on the side provides a safe dark-room light for developing out and bromide papers.

It is supplied complete, without Illuminating Lamp, but including  $5\frac{1}{2}$  feet of electric light cord and socket.

The Kodak Amateur Printer ..... \$10.00

## Velox Transparent Water Color Stamps

IT IS a simple matter to make beautifully colored prints by the use of Velox Transparent Water Color Stamps.

Artistic skill or knowledge of painting is not necessary. Just a brush or two and the book of stamps, which includes simple directions for coloring both prints and lantern slides.

Each book includes twelve sheets of colors and each sheet is divided by perforations into twenty-six stamps. To use any color merely tear off a stamp, place in a small saucer or palette supplied with the outfit, and cover with about a tea-spoonful of water.

Velox Transparent Water Color Stamps, complete booklet, 12 colors .....	\$ .50
Separate Color Leaves, two sheets .....	.10
Set of 3 Special Brushes, per set .....	.50
Mixing Palette .....	.30
Velox Transparent Water Color Stamp Outfit, including book, three brushes and palette .....	1.20



# Developing and Printing Outfits

FOR those who wish to develop by the dark room method we offer complete developing and printing outfits containing everything necessary for the work. By combining a variety of different articles and making up the outfits in large quantities we furnish them at a much lower price than if the articles were purchased separately. The Eastman 3A Outfit contains every requisite for finishing twenty-four  $3\frac{1}{4} \times 5\frac{1}{2}$  or smaller pictures, and includes the following:

One Kodak Candle Lamp . . . . .	\$0.55
One Printing Frame . . . . .	.40
One Glass for Frame . . . . .	.05
One 4-ounce Graduate . . . . .	.20
One Stirring Rod . . . . .	.05
Four Developing Trays . . . . .	.36
Five tubes Eastman Special Developer . . . . .	.30
One-half pound Kodak Acid Fixing Powder . . . . .	.20
Two dozen $3\frac{1}{4} \times 5\frac{1}{2}$ Velox Paper . . . . .	.40
Two ounces Nepera Solution for developing Velox . . . . .	.20
Instruction Book (free).	
	<hr/>
	\$2.71
EASTMAN 3A OUTFIT, complete, neatly packed . . . . .	\$1.75
EASTMAN A B C OUTFIT, similar to above but providing for $4 \times 5$ or smaller pictures . . . . .	\$1.75





# Velox Paper

**S**IMPLICITY of manipulation and a variety of grades and surfaces to match all classes of negatives, make Velox the outstanding developing-out paper for amateur requirements.

Velox is divided into three kinds of paper, called "Regular," "Special" and "Contrast," these containing a variety of surfaces. "Regular" and "Contrast" develop quickly and are best for negatives lacking contrast. "Special" papers develop slowly, and give soft effects from hard negatives.

Velox "Contrast" is made in Velvet (semi-gloss) and Glossy, single weight. Contrast Velox will secure the best possible results from extremely thin or from dense flat negatives.

Velox "Regular" has the following surfaces: Carbon (matte), Glossy and Velvet, single weight; Glossy and Velvet, double weight.

In the "Special" class, the surfaces are Carbon (matte), Portrait (smooth matte), Portrait double weight, Glossy, Glossy double weight, Velvet, and Velvet double weight.

Special Velvet Velox has a greater range than any of the other "Special" papers.

Royal Velox is coated on an India tint stock in "Regular" and "Special," in one surface, and just rough enough to produce soft, mellow-tinted prints.

## Price

Size	Single Weight			Double Weight		
	Dozen	½ Gross	Gross	Dozen	½ Gross	Gross
1 ⅞ x 2 ½	\$0.12		\$1.10	\$0.15		\$1.40
2 ¼ x 3 ¼	.12		1.10	.15		1.40
2 ½ x 4 ¼	.15		1.35	.20		1.70
3 ½ x 3 ½	.15		1.60	.20		2.00
3 ¼ x 4 ¼	.20		1.75	.25		2.20
2 ⅞ x 4 ⅞	.20		1.75	.25		2.20
3 ¼ x 5 ½	.20		2.00	.25		2.50
4 x 5	.25		2.30	.30		2.90
*3 ⅞ x 6 ½	.25		2.45			
2 ¼ x 7	.20		2.00	.25		2.50
4 ¼ x 6 ½	.30		3.05	.40		3.80
5 x 7	.40	\$2.10	3.90	.50	\$2.60	4.90
3 ½ x 12	.50	2.60	4.75	.60	3.10	5.95
Velox Post-cards, 3 ½ x 5 ½, furnished in Regular Velvet, Special Velvet, Special Portrait, Regular Glossy, Special Glossy and Regular Royal and Special Royal				.30	1.50	2.90
Brownie Post-cards, 2 ¾ x 4 ¼, Regular and Special Velvet				.20	1.10	2.15
*Glossy only (for use in Stereo Brownie Printing Frame)						



# Velox Sundries

N. A. (Non-abrasion) Velox Liquid Developer, 4-ounce bottle (makes 16 ounces for Special, Regular or Contrast) . . .	\$0.38
Ditto, 16-ounce bottle . . . . .	1.15
Nepera Solution, per 4-ounce bottle . . . . .	.30
Ditto, per 16-ounce bottle . . . . .	.90
Nepera Auxiliary Powders (for converting Nepera solution to a film or plate developer), per package 1 dozen . . .	.35
*Velox Re-developer for Sepia Tones, per 4-ounce bottle . .	.50
*Ditto, 2 ounces (sufficient for 150 4 x 5 prints) . . .	.30
Velox Re-developer Tubes, for sepia toning, per package 12 tubes . . . . .	.85
Velox Liquid Hardener, per 4-ounce bottle . . . . .	.25
Ditto, 8-ounce bottle . . . . .	.35
Kodak N. A. M. Q. Developer, per package 3 tubes . . .	.30
Kodak Acid Fixing Powder for fixing Velox Prints, per pound	.35
Ditto, ½ pound . . . . .	.20
Ditto, ¼ pound . . . . .	.15

\*Package also includes bleaching agent.

## Solio Paper

A rapid, glossy, printing-out paper.

Size	Per Package, 2 Doz.	Size	Per Package, 2 Doz.
1 ½ x 2 ½ . . . . .	\$0.20	2 ¼ x 7 (No. 1 Panoram Kodak)	\$0.30
2 ¼ x 3 ¼ . . . . .	.20		Per Doz.
2 ½ x 4 ¼ . . . . .	.25	4 ¼ x 6 ½ . . . . .	\$0.25
3 ½ x 3 ½ . . . . .	.25	5 x 7 . . . . .	.30
3 ¾ x 4 ¾ . . . . .	.25	3 ½ x 12 (No. 4 Panoram Kodak)	.35
2 ¾ x 4 ¾ . . . . .	.25	Post-cards . . . . .	.20
3 ¼ x 5 ½ . . . . .	.30	Double Solio Post-cards . . .	.40
4 x 5 . . . . .	.40	Brownie Post-cards, 2 ¼ x 4 ¼	.15

Solio Toning and Fixing Powders, per carton, 5 tubes, 25 cents. Solio Combined Toning and Fixing Solution, per 8-ounce bottle, 50 cents. Ditto, 4-ounce bottle, 30 cents: post-paid, 50 cents. Solio Hardener, per 8-ounce bottle, 70 cents.

## Glass Dry Plates

Seed and Royal Brands.

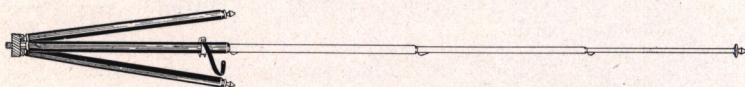
Size	Per Doz.	Size	Per Doz.
3 ½ x 3 ½ . . . . .	\$0.55	Royal Lantern Slide Plates,	
3 ¼ x 4 ¼ . . . . .	.65	3 ¼ x 3 ¼ . . . . .	\$0.65
3 ¼ x 5 ½ . . . . .	.90	Ditto, 3 ¼ x 4 . . . . .	.65
4 x 5 . . . . .	.90	Cover Glass for Lantern Slides.	
4 ¼ x 6 ½ . . . . .	1.30	3 ¼ x 3 ¼ . . . . .	.45
5 x 7 . . . . .	1.45	Ditto, 3 ¼ x 4 . . . . .	.45

Lantern Slide Binders, per package, 50 strips . . . \$0.25



# Tripods

## Kodak Metal Tripod



Combining light weight and compactness with exceptional rigidity, this is an ideal tripod for cameras up to 5 x 7.

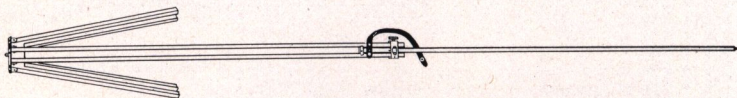
Has telescoping legs of brass tubing—lower sections nicked, the upper black enameled—should a part become inoperative through wear or accident, any section may be removed for repairs. This is a unique feature among metal tripods.

When extended each section catches and holds firmly. To close, it is necessary to press in top catch only, the others then releasing automatically.

The No. 1 has revolving head for attaching to camera. With this construction the camera may be swung, so as to take in the desired view without moving the tripod, a distinct advantage over other types of metal tripods. The No. 1 also has straps for holding the legs in place when closed. The Nos. 0 and 1C have solid heads, and are without straps for holding the legs.

	Sections	Closed	Length Extended	Weight	Price
Kodak Metal Tripod No. 0	3	15 ½ in.	39 ½ in.	15 ozs.	\$5.00
Kodak Metal Tripod No. 1	4	15 in.	48 ½ in.	24 ½ ozs.	7.25
Kodak Metal Tripod No. 1C	4	15 ½ in.	48 ¾ in.	25 ½ ozs.	6.50

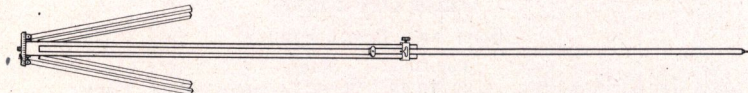
## Flexo Tripod



For cameras up to and including the 5 x 7 size this is a very satisfactory tripod at low price. Only clear, straight-grained spruce is used in its construction.

Price, \$1.75

## Bull's-Eye Tripod

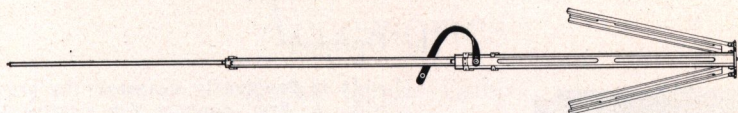


Two sections. Aluminum revolving head. Made of maple with brass fittings. For 4 x 5 cameras, or smaller. Length, extended, 42 ½ inches; folded, 24 inches. The two-section tripod that will go into a suit case.

Price, \$2.50



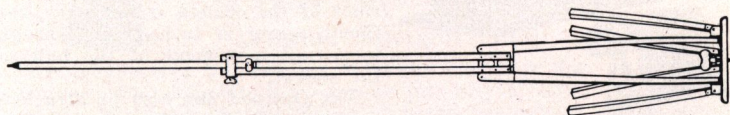
## Standard Tripod



The feature of this tripod is the automatic locking of the sections when they are extended. Light, compact and rigid. Fixed, non-detachable head. Length, folded, 21 inches; extended, 53½ inches. Weight, 18 ounces. Cherry finish, brass trimmings.

Price, \$4.00

## Combination Tripods



This tripod is constructed on the sliding and folding principle. Made of ash and well finished.

Style	Size of Camera	Weight	Price
No. 2½	6½ x 8½ and smaller	3 lbs.	\$5.75
No. 3	8 x 10 and 10 x 12	4 lbs.	6.25
No. 4	11 x 14 and 14 x 17	5 lbs.	7.25
No. 5	17 x 20 and 20 x 24	8 lbs.	10.00

## Sliding Tripod

A rigid tripod for use with large and heavy cameras. The No. 1 and No. 2 are made of spruce, the No. 3 and No. 4 of ash.

Style	Size of Camera	Weight	Price
No. 1	5 x 7 and smaller	2 lbs.	\$2.75
No. 2	5 x 8 and 6½ x 8½	2 lbs. 8 ozs.	3.25
No. 3	8 x 10 and 10 x 12	4 lbs. 8 ozs.	4.00
No. 4	11 x 14 and 14 x 17	6 lbs. 8 ozs.	5.00

## Eastman Tripod Brace

A simple device that firmly holds in position each leg of the tripod after it has been set up and adjusted.

Eastman Tripod Brace ..... \$1.50

## R. O. C. Tripod Truck

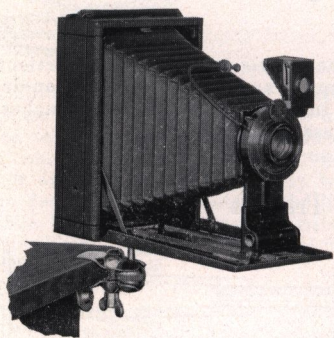
A folding tripod support, with casters for indoor use. Holds the tripod securely and provides a practical portable camera stand.

R. O. C. Tripod Truck, No. 1 for average tripods..... \$1.50  
R. O. C. Tripod Truck, No. 2 for very heavy tripods..... 1.75



# Accessories

## The Optipod



It is frequently necessary to provide a firm support for a camera when a tripod is not conveniently at hand. The felt-covered jaws of the Optipod may be quickly and firmly attached to a chair, table, fence, cycle or motor car, with a few turns of the thumb screw, at the same time rigidly clamping the ball and socket camera support in the required position. If slight readjustment of the camera is necessary, the thumb screw is turned just enough to permit movement of the ball in the socket.

The Optipod can also be attached to the head of a tripod, permitting adjustment of the camera that would be difficult, if not impossible, without this device.

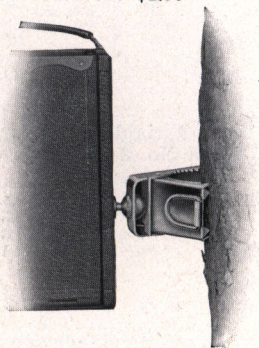
The Optipod is quite small and may readily be carried in the pocket. It is finished in nickel.

The Optipod ..... \$1.50

## The Kodapod

This little device serves the purpose of a tripod, and may readily be carried in the pocket. Its jaws are actuated by a strong spring, and when attached to a tree, fence or similar object, it provides a firm support for the average size pocket camera. The adjustable head permits using the camera in the most desirable position.

The Kodapod ..... \$2.25

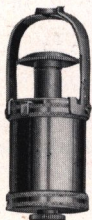


## Kodak Self-Timer

The Kodak Self-Timer may be adjusted to automatically release the shutter at the required time, permitting the operator of the camera to be included in the picture.

The Timer is made in one size, and will operate any shutter fitted with Cable Release.

Kodak Self-Timer ..... \$1.50



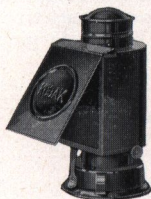


# Accessories

## Kodak Candle Lamp

This lamp is collapsible, well made, of special tested ruby fabric, bound in metal frames.

Kodak Candle Lamp ..... \$0.55  
Extra Candles for same, per doz. .40



## Kodak Dark-Room Lamp

The Kodak Dark-Room Lamp is oil burning and is fitted with both orange and ruby glass.

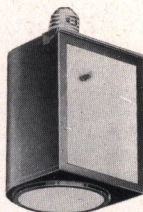
No. 2 Kodak Dark-Room Lamp.. \$1.50

## Brownie Safelight Lamp

An inexpensive but reliable safelight lamp for the amateur. The complete lamp screws into any electric socket. It takes a 15-watt Mazda bulb and has removable circular safelight in the bottom and rectangular one on the side.

A very convenient, clean lamp for the average amateur and easily carried in the bag of the traveler or vacationist for use as required.

Brownie Safelight Lamp ..... \$1.75  
Extra Safelights No. 1 Circular, \$0.30; Side .. .50



## Kodak Safelight Lamp

Those who have electricity in the house will find this lamp much superior to other types for dark-room work. It is supplied with a 5 x 7 Series I Safelight for use with films or plates not highly color sensitive. For more advanced work Safelights of other Series may be readily substituted.

Price includes safelight and four feet of electric cord with socket.

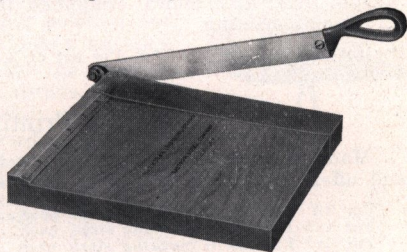
Kodak Safelight Lamp ..... \$4.00



## Kodak Trimming Board

A thoroughly reliable trimming board at a moderate price, constructed of hard wood with natural finish. The blade is of the best steel and a rule is fitted to the board.

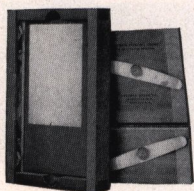
No. 1, 5 x 5 inches .... \$0.65  
No. 2, 7 x 7 inches .... .85





# Accessories

## Maskit Printing Frame

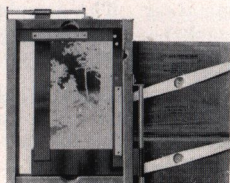


Furnished with a series of paper masks and a patented simple-working device on the inside of the frame which holds mask, paper and negative, firmly together, assuring uniform white margins and preventing all chance of slipping.

Kodak Maskit Printing Frame,	$3\frac{1}{4} \times 4\frac{1}{4}$ ..	\$.65
" "	$3\frac{1}{4} \times 5\frac{1}{2}$ ..	.70
" "	$5 \times 7$ ..	.85

## Kodak Auto-Mask Printing Frame

An adaptation to a printing frame of the masking principle of the highly successful Kodak Amateur Printer. Will accommodate negatives of any size up to and including  $4 \times 5$  and  $3\frac{1}{4} \times 5\frac{1}{2}$ . It is a very simple matter to adjust the mask for uniform masking of any negative you care to use, a graduated scale attached to the stationary guide aiding in sizing and holding exact dimensions of the mask openings.



Kodak Auto-Mask Printing Frame.... \$1.50

## Eastman Printing Frame

Standard Printing Frames, strongly constructed of suitable material.

Eastman,	$3\frac{1}{4} \times 4\frac{1}{4}$ or $4 \times 5$ .....	\$.40
"	$3\frac{1}{4} \times 5\frac{1}{2}$ , for films.....	.40
"	$3\frac{1}{4} \times 5\frac{1}{2}$ , for plates .....	.45
"	$5 \times 7$ .....	.55

## Kodaloid Printing Masks

These transparent, orange color masks are intended for use with Maskit Printing Frames. Supplied in sets of three, each with different size opening.

Per set of  $3, 3\frac{1}{4} \times 4\frac{1}{4}$ , \$0.35. Per set of  $3, 3\frac{1}{4} \times 5\frac{1}{2}$ , \$0.40. Per set of  $3, 5 \times 7$ , \$0.50. Black paper masks, same sizes as above. Price, per set of 3, \$0.12.

## Eastman Printing Masks

Made of transparent Kodaloid, to fit the regular Printing Frames, and offering various sizes of openings.

For 3A Frames, 6 masking sizes, each.....	\$.10
For 4x5 Frames, 7 masking sizes, each.....	.10
For 5x7 Frames, 6 masking sizes, each.....	.15



# Accessories

## Eastman Film Clip



A thoroughly dependable clip. Made in two sizes and nickel-plated.

3 1/2-inch, per pair..... \$ .45  
5-inch, per pair..... .60

## Flexo Print Roller



An inexpensive but very satisfactory roller for amateur use; has black enameled frame and a 4-inch rubber roller.

Price, \$ .35

## Kodak Print Roller

The best roller ever made for general amateur use; has double rubber rollers, 2 x 6 inches, and nickeled frame.



Price, \$1.15



## Eastman Photo Paste

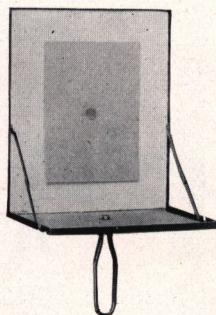
A first quality, solid, white paste. Will not cockle nor discolor print or mount.

3 ounce tube..... \$ .20  
5 ounce tube..... .30

## Flash-Light Material

The simplest method of making flash-light pictures is by means of the Eastman Flash Sheets and Kodak Flash Sheet Holder. The sheets burn slowly, giving a broad, soft light, and not so startling the subject as to give a staring effect to the eyes.

The holder is a genuine innovation. A saw tooth holds the sheet in proper position and it is lighted from the back through an aperture provided in the center for the purpose. In this manner the holder is always between the operator and the flash sheet, and it may be held in the hand or supported on a tripod, a socket being provided for the latter purpose.



No. 1 Flash Sheets, per package of 1/2 dozen sheets, 3 x 4.... \$ .35  
No. 2 Flash Sheets, per package of 1/2 dozen sheets, 4 x 5.... .56  
No. 3 Flash Sheets, per package of 1/2 dozen sheets, 5 x 7.... .84  
Kodak Flash Sheet Holder ..... 1.50



# Accessories

## Developing Trays

Bulls-Eye, 4 x 6 .....	\$ .22	Enamelled Ware, 4 x 6 ....	\$1.10
Bulls-Eye, 5 x 8 .....	.45	Enamelled Ware, 5 x 7 .....	1.45
Bulls-Eye, 8 x 10 .....	.95	Enamelled Ware, 8 x 10 .....	2.15

## Moulded Graduate

An inexpensive graduate especially suited to amateur use.

4 ounce .....	\$ .20
8 ounce .....	.30
16 ounce .....	.40



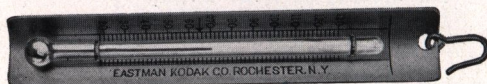
## Thermometer Stirring Rod



Two articles of great use to the amateur, combined in one. The rod is  $\frac{1}{4}$ -inch in diameter and 9 inches long. One end is flattened for crushing purposes. The thermometer is carefully tested and is unusually accurate.

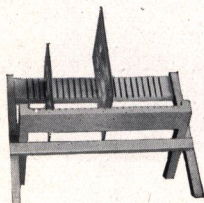
Price, \$1.25

## Eastman Thermometer



Especially suitable for determining the temperature in tank development. Made with curved back to fit inside of tank.

Price, \$1.00



## Premo Negative Rack

This rack accommodates negatives of all sizes. It folds flat when not in use.

No. 1, for 12 negatives.....	\$ .35
No. 2, for 24 negatives.....	.45

## "How to Make Good Pictures"

A practical and profusely illustrated book for the amateur that covers in a simple, understandable way every phase of photography in which he is likely to be interested. 170 pages.

"How To Make Good Pictures"..... \$ .50



## Kodak Dry Mounting Tissue

Mounts prints, even on thin mounts without curl. The simplest method of mounting, no apparatus being required—just fix the tissue on print, lay on mount and press with a warm flat iron; no sticky fingers, no muss of any kind.

### Prices

Size, $3\frac{1}{2}$ x $3\frac{1}{2}$ , 3 dozen.....	\$ .12	Size, 4 x 5, 2 dozen.....	\$ .12
Size, $3\frac{1}{4}$ x $4\frac{1}{4}$ , 3 dozen.....	.12	Size, $4\frac{1}{4}$ x $6\frac{1}{2}$ , 1 dozen.....	.12
Size, $3\frac{1}{4}$ x $5\frac{1}{2}$ , 2 dozen.....	.12	Size, 5 x 7, 1 dozen.....	.12

## Plate Holder and Adapter Slides

### Lacquered Pressboard

$3\frac{1}{4}$ x $4\frac{1}{4}$ .....	\$ .25	4 x 5 .....	\$ .25
$3\frac{1}{4}$ x $5\frac{1}{2}$ .....	.25	5 x 7 .....	.30

### Hard Rubber

$3\frac{1}{4}$ x $4\frac{1}{4}$ .....	\$ .25	4 x 5 .....	\$ .30
$3\frac{1}{4}$ x $5\frac{1}{2}$ .....	.30	5 x 7 .....	.45

## Plate Holder Kits

Made of well seasoned wood that will not warp, neatly finished in dead black, and of correct size to nest perfectly.

Size Outside	Size of Opening for Plate	
4 x 5	$3\frac{1}{4}$ x 4, $3\frac{1}{4}$ x $4\frac{1}{4}$ .....	\$ .35
5 x 7	$3\frac{1}{4}$ x 4, $3\frac{1}{4}$ x $4\frac{1}{4}$ , $3\frac{1}{4}$ x $5\frac{1}{2}$ , 4 x 5, $4\frac{1}{4}$ x $6\frac{1}{2}$ .....	.50

## Premo Film Pack Developing Hanger

### Improved Model

For use with the vertical tank system of development employed by photo finishing departments.

The improved hanger has twelve film clips of new design that provide greater rapidity and security in attaching the films. The construction also provides against the clips becoming inoperative through the chemical action of the developing solutions.

The order number may be written in pencil upon a white Kodaloid tablet removably attached to the hanger top.

The films are developed, rinsed, fixed, washed and dried without removal from the hanger.

### Prices

Film Pack Developing Hanger .....	\$2.00
Extra Clips, for Hangers, per dozen .....	.75





## The Kodak Album



Loose-leaf style. Cover, one-piece black narrow grained cowhide—leather lined. Leaves held in place by black cord through cover and metal tubes. Very flexible — Oxford Bible style edges.

4 1/4 x 7, A, 50 black leaves. \$4.00  
7 x 11, B, 50 black leaves. 6.00  
Package 12 extra leaves, Size A (4 1/4 x 7), \$0.18; Size B (7 x 11), \$0.25

## The Strand Album

Loose-leaf, open-back style. The covers are made of genuine leather, black and attractively finished to resemble Walrus Hide, with the word "Photographs" stamped in gold leaf. Furnished with 50 black leaves, held in place by a silk cord which passes through the leaves and cover in hollow metal posts.

7 x 11, B. \$3.50      9 x 14, E. \$5.75      11 x 14, D. \$6.75  
Package 12 Extra Leaves, Size B (7 x 11), \$0.25; Size D (11 x 14), \$0.60; Size E (9 x 14), \$0.55

## The Tiber Album

Loose-leaf style. The leaves are bound in place by means of a cord which passes through eyelets placed in flaps hinged to the insides of the covers, in the centre of the back. Cover is of black leatherette and quite flexible. Fifty black leaves.

5 x 8, A. . . . . \$1.35      10 x 12, C. . . . . \$2.50  
7 x 11, B. . . . . 1.85      9 x 14, D. . . . . 3.00  
Package 12 extra leaves, Size A (5 x 8), \$0.18; Size B (7 x 11), \$0.25;  
Size C (10 x 12), \$0.35; Size D (9 x 14), \$0.50

## The Kingsway Album

Loose-leaf, open-back style. The covers are flexible, with choice of Russet Brown, Olive Brown, Light Grey or Dark Grey genuine hand-finished heavy leathers. "Photographs" stamped in gold letters on the upper left hand corner of the cover. Furnished with 50 Black Leaves, held in place by a silk cord which passes through leaves and cover.



5 1/2 x 7, A. . . . . \$3.10      7 x 10, B. . . . . \$4.50  
Package 12 Extra Leaves, size A (5 1/2 x 7), \$0.18; Size B (7 x 10), \$0.25

## The Adanac Album



Solid bound style. Covers of black cloth with linen finish, have "Photographs" embossed on the upper left hand. Made in four sizes, with twenty-five black leaves.

5 x 8, A. . . . . \$0.90      10 x 12, C. . . . . \$1.75  
7 x 11, B. . . . . 1.20      9 x 14, D. . . . . 1.90



## The Balmoral Album

Loose-leaf, open back style. A handsome album with cover of genuine crepe leather, a most pleasing finish—"Photographs" stamped in gold letters on the upper left hand corner. The fifty black leaves are firmly held in place by means of small metal tubes through which a silk cord is passed and tied. Any leaf may quickly be removed and new leaves added.

5½ x 7, A . . . . .	\$2.50	8 x 10, D . . . . .	\$4.00
7 x 10, B . . . . .	3.50	10 x 12, C . . . . .	5.00
Package 12 Extra Leaves, size A (5½ x 7), \$0.18; size B (7 x 10), \$0.25;			
Size D (8 x 10), \$0.25; Size C (10 x 12), \$0.35.			

## The Glendale Album

Made up like the Balmoral, but with cover of linen-finish cloth. Open-back, loose-leaf plan and "Photographs" on cover.

5½ x 7, A . . . . .	\$1.25	8 x 10, D . . . . .	\$2.25
7 x 10, B . . . . .	1.75	10 x 12, C . . . . .	2.75
Package, 12 Extra Leaves, size A (5½ x 7), \$0.18; size B (7 x 10), \$0.25;			
Size D (8 x 10), \$0.25; Size C (10 x 12), \$0.35.			

## The Artist's Album

Loose-leaf system, silk lacing.

No. 1, black leaves; No. 2, white leaves;	
No. 3, Sepia leaves, 5½ x 7 . . . . .	\$0.35
Extra leaves, package of 5, black, white or sepia . . . . .	.12
No. 4, black leaves; No. 5, white leaves;	
No. 6, Sepia leaves, 7 x 10 . . . . .	.50
Extra leaves, package of 5, black, white or sepia . . . . .	.15



## The Week-End Album

Most suitable for sending to a friend the photographic souvenirs of a visit or of a trip together. Made on the loose-leaf plan, covers of sheepskin finished on the outside in craftsman style, of a brownish olive hue, the under side unfinished.

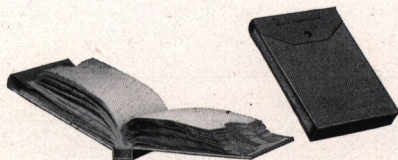
No. 1, 12 black leaves, 3 x 4½ \$0.35	No. 2, 12 black leaves, 5 x 6 . \$0.50
Extra leaves, per dozen . . . . .08	Extra leaves, per dozen . . . . .12

## The Snap-Shot Album

Cover of substantial card—soft black leaves.

No. 18, 20 pages, 7 x 10, each . \$0.20	No. 19, 20 pages, 5½ x 7, each \$0.15
---	---------------------------------------

## Eastman Film Negative Albums



For 100 negatives, 2½ x 4¼, or smaller . . . . .	\$1.00
For 100 negatives, 4 x 5, 3¼ x 4¼, or smaller . . . . .	1.25
For 100 negatives, 3¼ x 5½, or smaller . . . . .	1.25
For 100 negatives, 5 x 7, or smaller . . . . .	1.75



# KODAK CARD MOUNTS

## VIEW

Carbon Black and Scotch Grey, felt surface, bevelled edges, no embossed design

For Prints	Size Outside	Per 50	Per doz.	For Prints	Size Outside	Per 50	Per doz.
1 1/8 x 2 1/2	3 1/4 x 4	\$0.65	\$0.20	4 x 5	5 3/8 x 6 3/8	\$1.30	\$0.40
2 1/4 x 3 1/4	4 x 5	.85	.25	2 1/4 x 7	4 x 8 3/4	1.35	.40
2 1/2 x 4 1/4	4 1/4 x 6	1.00	.30	4 1/4 x 6 1/2	6 1/4 x 8 1/2	1.85	.50
3 1/4 x 4 1/4	5 x 6	1.20	.35	5 x 7	7 x 9	2.05	.60
3 1/4 x 5 1/2	5 1/4 x 7	1.40	.40	3 1/4 x 12	5 3/8 x 13 3/4	2.40	.65

## LAGOON

Jet Black, Ash Grey and White.

For Prints	Size Outside	Per 50	Per doz.	For Prints	Size Outside	Per 50	Per doz.
2 1/4 x 2 3/4	3 5/8 x 3 5/8	\$0.80	\$0.25	2 7/8 x 4 7/8	5 x 7	\$1.55	\$0.45
2 1/4 x 3 1/4	4 x 5	.95	.30	3 1/4 x 5 1/2	5 1/4 x 7 1/2	1.70	.50
2 1/2 x 3 1/4	4 1/4 x 6	1.20	.35	4 x 5	5 3/8 x 6 3/8	1.55	.45
3 1/2 x 3 1/2	5 x 5	1.20	.35	4 1/4 x 6 1/2	6 1/4 x 8 1/2	2.30	.65
3 1/4 x 4 1/4	5 x 6	1.45	.40	5 x 7	7 x 9	2.55	.70

## RIDGEWAY

In duplex form, for Oval or Square Prints, Brown and Grey.

For Prints	Size Outside	Per 50	Per doz.	For Prints	Size Outside	Per 50	Per doz.
2 1/4 x 3 1/4	4 x 5	\$1.95	\$0.55	2 7/8 x 4 7/8	5 x 7	\$2.45	\$0.70
2 1/2 x 4 1/4	4 1/4 x 6	2.05	.60	3 1/4 x 5 1/2	5 1/4 x 7 1/2	2.55	.75
3 1/4 x 4 1/4	5 x 6	2.30	.65	4 x 5	5 3/8 x 6 3/8	2.80	.80

## INSLIP ENLARGEMENT MOUNT

Color, English Grey or Sepia Buff.

No.	For Prints	Size Outside	Price per doz.	No.	For Prints	Size Outside	Price per doz.
A	3 1/4 x 5 1/2	7 1/4 x 9 1/2	\$0.85	E	6 x 10	10 3/8 x 14 3/8	\$1.15
B	4 1/4 x 6 1/2	8 1/4 x 10 1/2	.90	F	8 x 10	12 3/8 x 14 3/8	1.45
C	5 x 7	9 1/8 x 11 1/8	.90	K	5 x 8 1/2	9 x 12 1/2	.90
D	6 1/2 x 8 1/2	11 1/8 x 13 1/8	1.15	M	7 x 11	11 x 15	1.75

Price per Half Dozen

G	10 x 12	15 x 17	\$1.15	J	11 x 14	17 x 20	\$1.50
H	8 x 14	14 x 20	1.15	L	7 x 12	11 1/2 x 16 1/2	1.15

## THE DRIMOUNT

Color, English Grey or Sepia Buff.

No.	For Prints	Size Outside	Price per doz.	No.	For Prints	Size Outside	Price per doz.
A	3 1/4 x 5 1/2	7 1/4 x 9 1/2	\$0.55	E	6 x 10	10 3/8 x 14 3/8	\$0.70
B	4 1/4 x 6 1/2	8 1/4 x 10 1/2	.55	F	8 x 10	12 3/8 x 14 3/8	.95
C	5 x 7	9 1/8 x 11 1/8	.55	K	5 x 8 1/2	9 x 12 1/2	.60
D	6 1/2 x 8 1/2	11 1/8 x 13 1/8	.70	M	7 x 11	11 x 15	1.20

Price per Half-Dozen

G	10 x 12	15 x 17	\$0.75	J	11 x 14	17 x 20	\$1.00
H	8 x 14	14 x 20	.75	L	7 x 12	11 1/2 x 16 1/2	.65



# Tested Chemicals

Kodak Chemical Outfit, consists of M. Q. and Special Developer Intensifier, Reducer and Velox Re-developer . . . . .	\$0.40
Eastman Special Developer Powders, per package, 5 in sealed glass tubes . . . . .	.30
Eastman Hydrochinon Developer Powders, per package, 5 glass tubes . . . . .	.30
Eastman Pyro Developer Powders, per package, 5 in sealed glass tubes . . . . .	.25
Elon, per 1-ounce bottle . . . . .	.68
Tozol, per 1-ounce bottle . . . . .	.45
Hydrochinon, per 1-ounce can . . . . .	.30
Eastman Permanent Crystal Pyro. per 1-ounce bottle . . . . .	.33
Hyposulphite of Soda, granular, per pound . . . . .	.19
Alum, powdered, per pound . . . . .	.30
Kodak Acid Fixing Powder, per pound package . . . . .	.35
Ditto, per ½-pound package . . . . .	.20
Ditto, per ¼-pound package . . . . .	.15
Eastman Intensifier, glass tube, per tube . . . . .	.15
Eastman Reducer, per box of 5 tubes . . . . .	.50
Potassium Bromide, per ounce can . . . . .	.11
Acetic Acid, 28 per cent. per 1-pound bottle . . . . .	.23
Citric Acid, 4-ounce bottle . . . . .	.38
Kodak Tested Carbonate of Soda (desiccated), per 1-pound bottle . . . . .	.40
Kodak Tested Sulphite of Soda (desiccated), per 1-pound bottle . . . . .	.45

## Bausch & Lomb Protar Lens—Series V.F.18

Designed for extreme wide-angle work, this lens embraces a field of 110 degrees.

No.	Size	Equivalent Focus	Price in Barrel	No.	Size	Equivalent Focus	Price in Barrel
1	4¼ x 6½	3¾ in.	\$35.00	3	6½ x 8½	5½ in.	\$42.50
2	5 x 7	4⅞ in.	35.00	4	8 x 10	7⅞ in.	52.50

## Symmetrical Wide-Angle Lens

Has an angle of about 80 degrees and is furnished in cells to interchange with the various lenses supplied on Premo Cameras.

No.	Size	Equivalent Focus	Price in Cells only
1	4 x 5	3½ in.	\$7.50
2	5 x 7	5 in.	11.00

# Sundries

Cable Release . . . . .	\$0.40	Shoulder Straps. Black:	
Bulbs and Tubes, No. 2 . . . . .	.30	½ x 52 inch with Snaps and Buckles . . . . .	.75
Bulbs and Tubes, No. 3 . . . . .	.40	½ x 66 inch, with Buckle . . . . .	.70
Film Clips, Kodak Jr. No. 1. . . . .	.20	¾ x 74 inch, with Buckle . . . . .	.85
Film Clips, Kodak . . . . .	.40	Milled Head Camera Screws:	
Focus Cloth, Rubber, per yd. . . . .	1.25	½ inch and smaller . . . . .	.20
Ground Glass, 4 x 5 . . . . .	.30	Larger than ½ inch . . . . .	.30
5 x 7 . . . . .	.35	Stirring Rod, Hard Rubber . . . . .	.35
Shoulder Straps. Black:		Tubing, Red or Black, per foot . . . . .	.13
½ x 52 inch with Snaps and Buckles . . . . .	.60		