

# *Voigtländer*

## New "Bijou" Reflex Camera.



*Half actual size.*

**For Plates  $4\frac{1}{2} \times 6$  c/m.**

Full Particulars and Prices see page 1139.

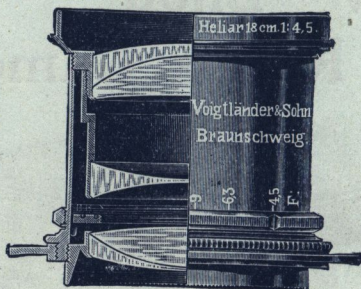
Sole Agent for Great Britain and Colonies—

**F. G. PHILLIPS, 12, Charterhouse St.,  
Holborn Circus, LONDON, E.C.**

# Voigtländer "Heliar" Lens.

(Constructed by DR. HANS HARTING, F.R.P.S.)

**A brilliant  
Anastigmatic  
Objective,  
working at a  
full aperture of  
F 4.5  
In all sizes.**



**Highly  
recommended  
for  
Portrait  
Photography.**

Equiva- lent Focus.	Diam. of Lens.	Size of Plate sharply covered F 4.5.	Price.	Code Word.	Counter- sunk Mount.	Code Word.	Focussing Mount.	Code Word.
c/m	ins.	m/m	ins.					
5	2	11	1 3/16 x 2	£4 0 0	Fiasco	..	..	..
8 1/2	3 3/8	19	2 x 2 1/2	4 15 0	Fiber	..	..	..
12	4 1/4	27	3 1/4 x 2 3/4	5 10 0	Fibrin	£5 15 0	Fixage	£6 5 0
15	6	33	4 1/4 x 3 1/4	6 5 0	Fibrinosus	6 10 0	Fibroso	7 0 0
18	7 1/8	40	5 1/2 x 4	8 0 0	Figella	8 5 0	Filigran	8 15 0
24	9 1/8	54	7 x 5	13 0 0	Finota	13 10 0	Finte	14 0 0
30	11 1/8	67	8 1/4 x 6 1/4	18 0 0	Firna	..	..	..
36	14 1/4	80	9 1/2 x 7	24 0 0	Fiscano	..	..	..
42	16 1/2	93	10 1/2 x 8 1/4	31 0 0	Fiscal	..	..	..
48	19	107	12 x 10	37 10 0	Fistel	..	..	..
60	24	132	16 x 12	75 0 0	Finger	..	..	..

The "**Heliar**" Lens is a brilliant Anastigmatic Objective, working at a full aperture of F 4.5 in all sizes; it is suitable for the most rapid instantaneous work, also for Portraits, Groups, Landscapes, and Press Photography.

Owing to its great luminosity instantaneous exposures in the open air can be taken (1/250th of a second or less) in favourable light. The definition is excellent, and the lens is perfectly free from coma.

Small pictures taken with the "**Heliar**" Lens can be enlarged without any noticeable decrease of definition.

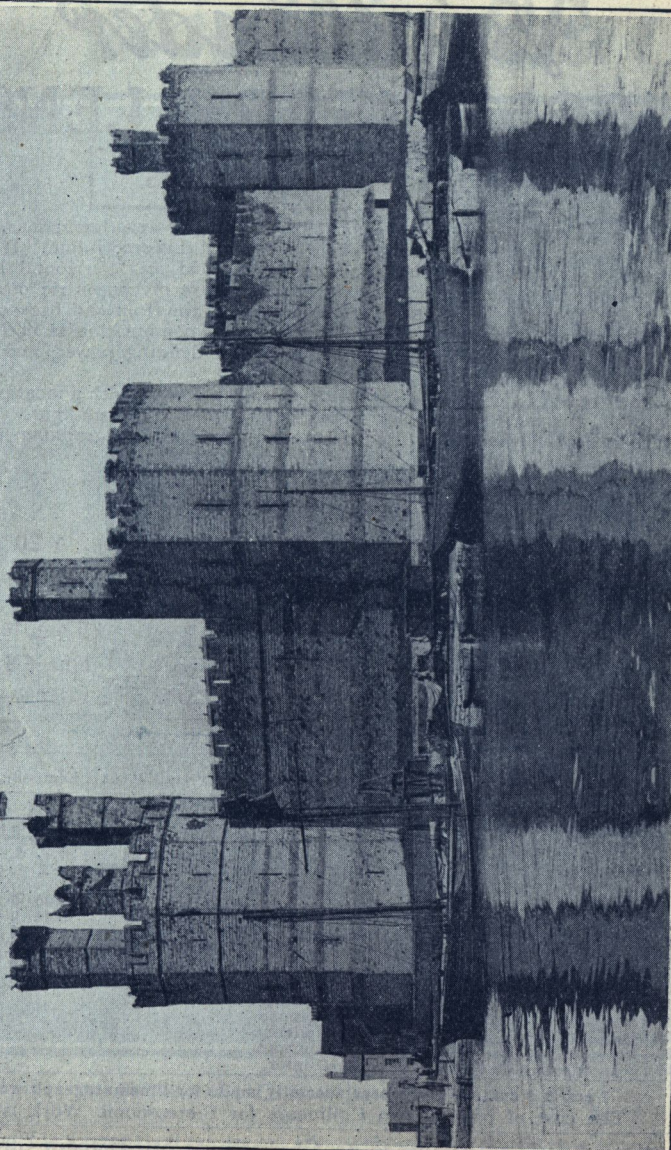
"**Heliar**" Lenses, combined with Telephoto attachments, will be found most suitable for Telephotography.

**5 1/2 c/m and 8 1/2 c/m specially** made for Cinematograph work.

The cost of pairing two "**Heliars**" for Stereoscopic work is 8/-

Send for Complete List to 12, Charterhouse St., Holborn Circus,  
London, E.C.





Carnarvon Castle.

Photo by Mr. F. Fielding, Manchester.  
Voigtländer "Heliar" Lens, F 4·5.

# Voigtländer

## “COLLINEAR” LENS.

“ THE PERFECT LENS.”

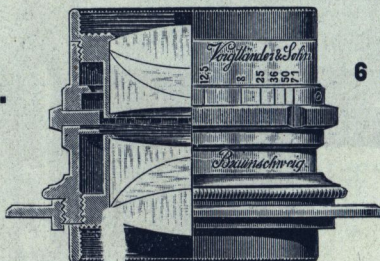
The “**Collinear**” is the most perfect type of anastigmat lens. It has all the corrections that is possible in a lens of this description. It will make a simultaneously sharp picture of vertical and horizontal lines crossing each other, or a perfectly sharp picture of concentric circles.

“**Collinear**” Lenses are symmetrical, the front and back combination being exactly the same focus; each combination is in itself corrected, achromatic, anastigmatic, of sharp defining power, and can be used as a single lens.

**Series II., F 5·4**, is used for extra rapid work with a focal plane shutter, also most suitable for all work performed in a weak light. This lens is generally used by Press Photographers for photographing horse races, athletes, animals in nature, etc.

### SERIES II.

**Full  
Aperture**



**6 cm. to 20 cm.,  
F 5·4.**

**25 cm. to 60  
cm., F 6·3.**

Equiv- alent Focus.		Diameter of Lens.	Size of Plate sharply covered		Ordinary Mount.	Code Word.	Countersunk Mount		Focussing Mount.	
			At Full Aperture.	Stopped Down.			Price.	Code Word.	Price.	Code Word.
6	2 1/2	11	2 x 2	3 1/2 x 3 1/2	4 10 0	Galen	£ s. d.	..	£ s. d.	..
7	2 3/4	13	3 1/4 x 2 1/4	4 x 3 1/4	4 10 0	Galeotto	..	..	..	..
9	3 1/4	17	4 x 2 3/4	4 3/4 x 3 3/4	0 0 0	Gandara	5 5 0	Gabes	5 15 0	Nager
12	4 1/4	23	4 1/2 x 3 1/2	6 1/4 x 4 3/4	15 0	Gaston	6 0 0	Gafun	6 10 0	Narcose
13 1/2	5 1/4	26	5 x 4	6 1/2 x 5 1/2	5 0	Gatter	6 10 0	Galmel	7 0 0	Narcin
15	6	29	6 1/4 x 4 3/4	8 1/4 x 6 1/4	6 15 0	Gawein	7 0 0	Gamba	7 10 0	Nauders
20	8	38	7 1/2 x 5	9 1/2 x 7	9 0 0	Gemma	9 8 0	Gaza	10 0 0	Negus
25	9 1/4	40	8 1/4 x 5	9 1/2 x 8	11 0 0	Georgia	..	..	..	..
31	12 1/4	48	8 1/4 x 6 1/4	12 x 10	15 0 0	Ginster	..	..	..	..
37	14	58	9 x 7	14 x 10 1/2	20 0 0	Gorgone	..	..	..	..
44	17 1/2	70	11 x 8	15 1/2 x 11 1/2	27 0 0	Gudrun	..	..	..	..
52	20 3/4	82	12 x 10	17 1/2 x 13 1/2	34 0 0	Guntram	..	..	..	..
60	23 3/4	91	13 3/8 x 10 3/8	19 3/8 x 15	45 0 0	Gunter	..	..	..	..

7 cm. & 9 cm. are the lenses specially made for Cinematograph work.  
The cost of pairing two Collinears for Stereoscopic Work is 8/-.  
Send for Complete List to 12, Charterhouse St., Holborn Circus,  
London, E.C.



# Voigtländer



*Photo by M. Dixon & Co., 15, Newgate Street, E.C.*

**Taken with Collinear Lens, Series II.**

**Send for Complete List to 12, Charterhouse St., Holborn Circus,  
London, E.C.**

# Voigtländer Collinear

## SERIES III.

Full Aperture.

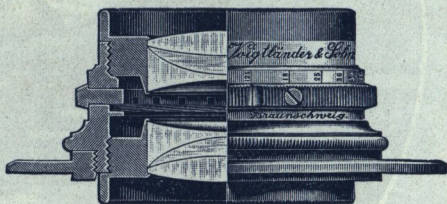
7 cm. to 18 cm., F 6'8.

20 cm. to 58 cm., F 7'7.

Equivalent Focus.		Diameter of Lens.	Size of Plate sharply covered		Ordinary Mount.	Code Word.	Countersunk Mount.		Focussing Mount.	
			At Full Aperture.	Stopped Down.			Price.	Code Word.	Price.	Code Word.
cm.	ins.	mm.	ins.	ins.	£ s. d.		£ s. d.		£ s. d.	
7	2 $\frac{3}{4}$	11	2 $\frac{3}{4}$ × 1 $\frac{3}{4}$	4 × 3 $\frac{1}{2}$	4 0 0	Hadramant	..	..	..	..
9	3 $\frac{1}{2}$	14	3 $\frac{1}{2}$ × 2 $\frac{3}{4}$	4 $\frac{3}{4}$ × 3 $\frac{3}{4}$	4 5 0	Hagar	4 10 0	Hebe	5 0 0	Narbo
12	4 $\frac{3}{4}$	18	4 $\frac{3}{4}$ × 3 $\frac{1}{2}$	6 $\frac{1}{2}$ × 5	5 0 0	Hakon	5 5 0	Hedwig	5 15 0	Nathan
13 $\frac{1}{2}$	5 $\frac{1}{4}$	20	4 $\frac{3}{4}$ × 3 $\frac{1}{2}$	7 × 5 $\frac{1}{2}$	5 10 0	Halde	5 15 0	Hegar	6 5 0	Natter
15	6	23	6 $\frac{1}{2}$ × 4 $\frac{3}{4}$	8 × 6	6 0 0	Halma	6 5 0	Helga	6 15 0	Neckar
18	7 $\frac{1}{4}$	28	7 $\frac{1}{2}$ × 5	9 × 7	7 5 0	Hassan	7 10 0	Helm	8 0 0	Nelda
20	8	27	8 $\frac{1}{2}$ × 6 $\frac{1}{2}$	10 × 8	8 0 0	Hatto	8 5 0	Heliodor	8 15 0	Nenner
25	10	34	9 × 7	12 × 10	10 0 0	Hella	..	..	..	..
31	12	40	12 × 10	14 × 12	14 0 0	Hestia	..	..	..	..
37	14 $\frac{1}{2}$	47	14 × 10	16 × 13	18 0 0	Honduras	..	..	..	..
44	17 $\frac{1}{2}$	57	15 × 12	20 × 15	23 0 0	Horus	..	..	..	..
52	20 $\frac{1}{2}$	67	18 × 12	20 × 18	30 0 0	Hulda	..	..	..	..
58	23	76	20 × 14	24 × 20	42 0 0	Hutten	..	..	..	..

Cost of pairing 2 Collinears for Stereoscopic Work is 8/-

## SERIES IV.

Full Aperture,  
F 12'5.

Wide-Angle Anastigmat for Architectural, Process Work, and Landscapes.

The wide-angle Collinears give, with full aperture, a field of view of about 85°. When stopped down, 95°.

Equivalent Focus.		Diameter of Lens.	Size of Plate sharply covered.		Price.	Code Word.
			F 12'5.	Stopped Down.		
cm.	ins.	mm.	ins.	ins.	£ s. d.	
10	4	8	4 $\frac{1}{2}$ × 3 $\frac{1}{2}$	6 $\frac{1}{2}$ × 4 $\frac{3}{4}$	4 0 0	Kabale
12	4 $\frac{3}{4}$	10	5 × 4	7 $\frac{1}{2}$ × 5	5 0 0	Kabul
15	6	12	6 $\frac{1}{2}$ × 4 $\frac{3}{4}$	8 $\frac{1}{2}$ × 6 $\frac{1}{2}$	5 10 0	Kallias
20	8	16	8 $\frac{1}{2}$ × 6 $\frac{1}{2}$	10 × 8	6 0 0	Kandahar
25	9 $\frac{1}{4}$	21	9 × 7	12 × 10	9 0 0	Kaste
32	12 $\frac{3}{4}$	26	10 × 8	14 × 11	12 0 0	Kondor
44	17 $\frac{1}{2}$	35	12 × 10	15 × 12	20 0 0	Konon
58	22 $\frac{3}{4}$	46	15 × 12	24 × 18	30 0 0	Korfu
80	31 $\frac{1}{2}$	65	16 × 14	28 × 22	45 0 0	Kuno

Send for Complete List to 12, Charterhouse St., Holborn Circus,  
London, E.C.



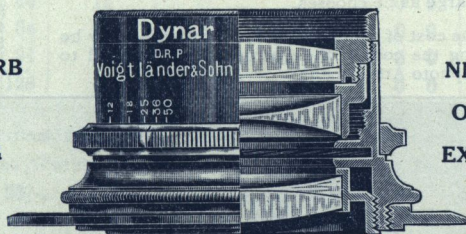
# Voigtländer

## "Dynar" Lens.

A **New Rapid Objective F 6**, adapted for all requirements of up-to-date Photography.

The **"Dynar" Lens** is constructed of hard colourless Jena glass, noted for its great light transmitting power, uniformity of definition, and brilliancy of its pictures. It consists of three separate lenses so arranged as to obtain extreme rapidity, and is excellently adapted for the most rapid instantaneous exposures out of doors. We particularly recommend it for Hand Camera work, on account of its light weight.

A SUPERB  
LENS  
GIVING



NEGATIVES  
OF GREAT  
EXCELLENCE

"Dynar" F 6.

The covering power of the **"Dynar,"** combined with its great sharpness of definition, is wonderful, and owing to its scientific construction the illumination is equally sharp on the extreme edges as in the centre of the plate, the angle of image is also very large, as the following Table indicates.

Equivalent Focus.		Diameter of Lens.	Size of Plate sharply covered.		Ordinary Mount.	Code Word.	Countersunk Mount.		Focussing Mount.	
			At Full Aperture.	Stopped Down.			Price.	Code Word.	Price.	Code Word.
cm.	ins.	mm.	ins.	ins.	£ s. d.		£ s. d.		£ s. d.	
12	4 $\frac{3}{4}$	21	4 $\frac{3}{4}$ × 3 $\frac{1}{4}$	6 $\frac{1}{2}$ × 4 $\frac{3}{4}$	3 15 0	Dyn	4 0 0	Dynein	4 10 0	Dynarch
12 $\frac{1}{2}$	5 $\frac{1}{2}$	24.5	5 $\frac{1}{2}$ × 4	7 $\frac{1}{8}$ × 5 $\frac{3}{8}$	4 5 0	Dyro	4 10 0	Dyrocin	5 0 0	Dyroarch
15	6	26	6 × 4 $\frac{1}{2}$	8 × 6	4 15 0	Dysis	5 0 0	Dysein	5 10 0	Dysisarch
18	7 $\frac{1}{8}$	32	6 $\frac{1}{2}$ × 4 $\frac{3}{4}$	9 × 7	6 0 0	Dytes	6 5 0	Dytesein	6 15 0	Dytesarch

The cost of pairing two "Dynars" for Stereoscopic Work is 8/-

Send for Complete List to 12, Charterhouse St., Holborn Circus,  
London, E.C.

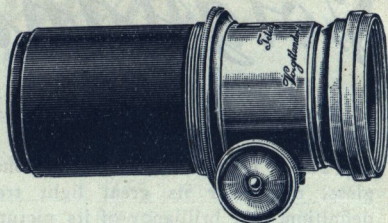
# Voigtländer Telephotographic Lenses

## Special Lenses and Cameras for Telephotography.

Every degree of magnification may be obtained, according to the distance the Lens is placed from the plate. The image is from three to four times as large as that obtained by an ordinary Lens of the same focus as the Camera extension. An image ten to twelve times larger than that of the Positive Lens alone, can be obtained sharply defined.

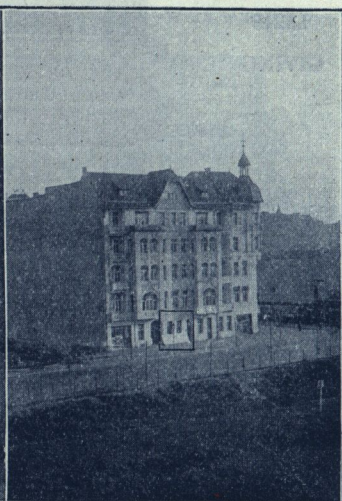
The Telephotographic Lens is recognised as forming an essential part of the Photographer's outfit, as it gives him—within certain limits—a considerable range of foci to make the subject as large as he chooses.

**PRICES.**—The cost of complete Telephoto Lenses may be found by adding the cost of the Positive Lens selected to that of the Telephoto Attachment.



### TELEPHOTO ATTACHMENT.

No.	Price.
1	£4 0 0
2	4 0 0
3	4 5 0
4	4 15 0
5	5 10 0



Reduced from  $\frac{1}{4}$ -Plate.

Negatives by R. F. Foster, Esq.

TAKEN WITH VOIGTLÄNDER COLLINEAR,  
SERIES III., 20 cm., AND VOIGTLÄNDER  
TELEPHOTO ATTACHMENT, No. 4.

TAKEN WITH VOIGTLÄNDER COLLINEAR,  
SERIES III., 20 cm.

Note the position of lamp post in both views, which proves conclusively that the Camera was not shifted in the slightest degree.

Send for Complete List to 12, Charterhouse St., Holborn Circus,  
London, E.C.



# Voigtländer

## Portrait Lenses. SERIES Ia.

Full Aperture F 2.3.

Extra Rapid Objectives for Portraits & Cinematograph Work.

Equivalent Focus.		Diameter of Lens.	Diameter of Useful Field.	Size of Picture.	Price.			Code Word.
cm.	ins.				£	s.	d.	
8	3 $\frac{1}{4}$	36	1 $\frac{3}{8}$	Cinematograph	6	0	0	Adler
10	4 $\frac{1}{8}$	46	1 $\frac{5}{8}$	"	6	0	0	Agathe
15	6	64	2 $\frac{1}{4}$	C.D.V. Bust	8	0	0	Aller
20	7 $\frac{7}{8}$	84	2 $\frac{3}{4}$	C.D.V. f. length	12	0	0	Andorra
30	11 $\frac{1}{2}$	128	4	Cabinet Bust	30	0	0	Argus

These objectives, from 8 cm. to 20 cm. are fitted with Iris Diaphragms, the 30 cm. has Waterhouse Diaphragms; price of extra set Waterhouse Diaphragms, 25/-.

## Portrait Lenses. SERIES I.

Full Aperture F 3.16.

Modified Petzval Lens. For Portraits and Projection.

Equivalent Focus.		Diameter of Lens.	Suitable for	Price.			Code Word.	Price of extra sets Waterhouse Diaphragms.
cm.	ins.			£	s.	d.		
17	6 $\frac{3}{4}$	53	C.D.V. Bust and Children	6	0	0	Barbara	15 0
21	8 $\frac{1}{4}$	66		9	0	0	Belisar	17 0
25	9 $\frac{1}{2}$	79	C.D.V. bust & full length	13	0	0	Bergamo	19 0
31	12	92	Cabinet	18	0	0	Beowulf	1 2 0
40	15	105	Boudoir	24	0	0	Bramarbus	1 5 0

All Portrait Lenses, Series I., are supplied with Waterhouse Diaphragms; the 17, 21, and 25 cm. are fitted with rack and pinion.

Send for Complete List to 12, Charterhouse St., Holborn Circus, London, E.C.

*Voigtländer***Portrait Euryscope Lenses****SERIES III. Full Aperture F 4.5.**

Equivalent Focus.		Diam. of Lens.	Size.	Price.		Code Word.	Price of a Set of Waterhouse Diaphragms.	
cm.	ins.	mm.		£	s. d.		£	s. d.
17	6 $\frac{3}{4}$	40	C.D.V.	4	10 0	Cadmus	13	0
20	7 $\frac{3}{4}$	46	„	5	10 0	Catalonien	14	0
22	8 $\frac{1}{2}$	53	„	7	0 0	Catania	15	0
28	11	66	Cabinet	10	0 0	Ceder	17	0
35	13 $\frac{3}{4}$	79	„	14	0 0	Centaur	19	0
40	16	92	Cab. & Boudoir	20	0 0	Certosa	1	2 0
51	20	105	„	26	0 0	Cimon	1	7 0
66	26	135	{ Boudoir, Imperial, &c. }	47	10 0	Cibele	1	14 0

All these Lenses are supplied with a set of Waterhouse Diaphragms.

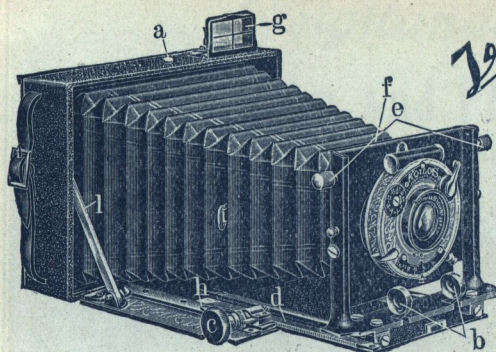
*Voigtländer* **Euryscope Lens****SERIES IVa. Full Aperture F 7.**

Equivalent Focus.		Diameter of Lens.	Size of Plate covered Stopped Down.	Price.		Code Word.
cm.	ins.	mm.	ins.	£	s. d.	
15	5 $\frac{3}{4}$	22	4 $\frac{3}{4}$ × 3 $\frac{1}{2}$	3	10 0	Dingo
18	7 $\frac{1}{8}$	27	6 $\frac{1}{2}$ × 4 $\frac{3}{4}$	4	4 0	Divan
20	7 $\frac{3}{4}$	30	7 $\frac{1}{2}$ × 5	4	16 0	Dolman
25	9 $\frac{3}{4}$	38	6 $\frac{1}{2}$ × 8 $\frac{1}{2}$	5	12 0	Dolus
30	11 $\frac{3}{4}$	46	9 × 7	6	18 0	Domina
36	14 $\frac{1}{4}$	55	10 × 8	8	12 0	Dorn
43	17	67	12 × 10	11	12 0	Duenna
50	19 $\frac{1}{2}$	77	14 × 11	16	10 0	Despina
66	26	104	15 × 12	26	0 0	Dessin
87	34 $\frac{1}{4}$	137	20 × 16	50	0 0	Dina

The Euryscope Lens for Universal use.

Send for Complete List to 12, Charterhouse St., Holborn Circus,  
London, E.C.





The . .  
**Voigtlander**  
**Alpine**  
**Camera,**

$\frac{1}{4}$ -Plate, or  $9 \times 12$  cm.

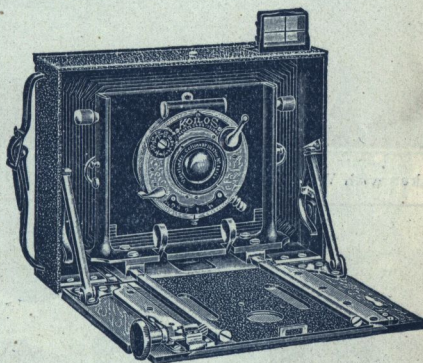
For Plates or Film Pack.

**Especially suitable for use  
in Tropical Climates.**

This Camera is entirely constructed of **LIGHT METAL**, and is fitted with a Voigtlander Lens, in Koilos Shutter with Hinged View Finder. It weighs  $1\text{ lb. } 11\text{ oz.}$

In consequence of the very long triple extension, work can be done with the Back Combination of the Collinear Lens. Focussing is done by means of a rack and pinion movement, with scale affixed on the left. The objective can be adjusted in vertical or horizontal direction.

The measurements of the apparatus are  $5\frac{1}{4} \times 4\frac{3}{8} \times 1\frac{1}{2}$  inches.



**PRICES.**

	£	s.	d.	Code Word.
With Collinear Lens, Series III., 12 cm., in Koilos Shutter, 6 Single Dark Slides, and Focussing Screen	10	0	0	<i>Alpinhakon</i>
Ditto with Collinear III. $13\frac{1}{2}$ cm.	10	10	0	<i>Alpinhalde</i>
Ditto with Dynar 12 cm.	8	15	0	<i>Alpindyn</i>
Telephoto Attachment giving a magnification of $2\frac{3}{4}$ times	3	0	0	<i>Telealpin</i>
Film Pack Holder, $\frac{1}{4}$ -Plate	7	6		<i>Alpinpack</i>
Single Dark Slides	1	6		<i>Alpincas</i>
Solid Leather Case for the Alpine Camera, with 6 Slides	10	6		<i>Alpintasche</i>
Contrast Filters, each $\left. \begin{matrix} A \\ B \end{matrix} \right\}$	14	0		$\left. \begin{matrix} Alpingelaceo \\ Alpingelado \end{matrix} \right\}$

*The extreme portability of this apparatus enables it to be carried in the pocket.*

Aluminium Telescopic Tripod, 25/6.

Send for Complete List to 12, Charterhouse St., Holborn Circus,  
London, E.C.



*Photo by C. Hofman, Esq.*

Taken with Voigtländer  $\frac{1}{4}$ -pl. Film & Plate Camera, & Voigtländer Collinear Lens, Series III.



*Photo by C. Hofman, Esq.*

Taken with back combination of Collinear Lens, Series III., using the double extension of Camera, from the **same standpoint** as above picture.



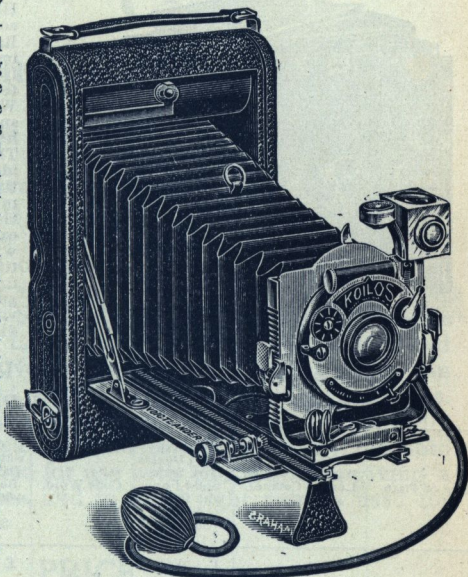
# Voigtländer

## Improved Film and Plate Camera.

(DAYLIGHT LOADING.)

$4\frac{1}{4} \times 3\frac{1}{4}$  in.  $\frac{1}{4}$ -Plate, Postcard Size  $5\frac{1}{2} \times 3\frac{1}{2}$  in. and  $5 \times 4$  in.

This Camera is extremely portable, and has been constructed to meet the demand for a High-class Folding Camera suitable for all the requirements of up-to-date Photography. The body is constructed of mahogany and aluminium, covered with black leather, with nickel fittings, superior leather bellows, double extension rack and pinion movement, enabling the back combination of the Lens to be used when desired; rising and cross front for vertical and horizontal pictures; view finder and spirit level. Focussing scale for both films and plates is fixed to the base-board. The Lens is a Collinear, which is a perfect anastigmat and unequalled for brilliancy of definition; each combination is an anastigmat in itself, and can be used separately.



### PRICES.

	£	s.	d.
$\frac{1}{4}$ -Plate Camera, fitted with Collinear Lens, Series III., 12 cm, F 6·8, and "Koilos" Sector Shutter, speeds up to $\frac{1}{300}$ Second .. .. .	9	10	0
Postcard Size Camera, fitted with Collinear Lens, Series III., 15 cm, F 6·8, in "Koilos" Shutter .. .. .	11	8	0
5 in. $\times$ 4 in. size ditto, Collinear III., $13\frac{1}{2}$ cm. .. .. .	11	0	0

*These prices include 3 single metal dark slides and focussing screen, fitted with hood cover, in case. Black or Brown Solid Leather Sling Case, with lock and key, for carrying Camera, 7/6.*

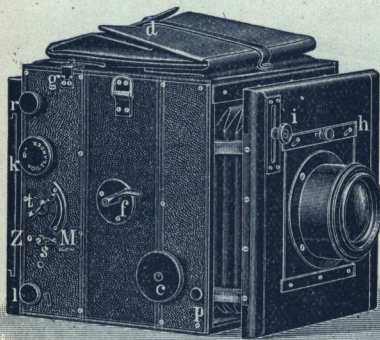
Aluminium Telescopic Tripod, 25/6

Send for Complete List to 12, Charterhouse St., Holborn Circus, London, E.C.

# Voigtländer

## HELIAR REFLEX CAMERA,

With Heliar Lens, **F 4.5** complete.



This is the most perfect type of Hand Camera. It is of superior construction, and is fitted with a Rack and Pinion Movement working on all the four corners of the front, ensuring rigidity when extended. The Mirror is of Optically Worked Glass, silvered on the surface, and coated with a colorless preparation for preservation. The image reflected is therefore identical with that obtained upon the plate. This arrangement permits the photographer to observe the image up to the moment of exposure. The Camera is fitted with a Focal Plane Shutter, giving time and instantaneous exposures up to  $\frac{1}{1000}$  of a second; and is guaranteed to work without vibration. The Camera is also fitted with a reversible back.

### Price of Voigtländer Heliar Reflex Camera,

**$\frac{1}{4}$ -Plate, or  $9 \times 12$  cm., and  $\frac{1}{2}$ -Plate,  $12 \times 16\frac{1}{2}$  cm.**

Size of Plate.	With Voigtländer Lens in Counter-sunk Mount.	Camera with 3 Double Dark Slides, Solid Form with folding Wood Shutters.	Code Word.	Camera with 3 Double Dark Slides, Book Form with folding Wood Shutters.	Code Word for Camera with 3 Double Dark Slides, Book Form with folding Wood Shutters.	Code Word for Camera with Magazine for 12 Plates.
$\frac{1}{4}$ -Plate or $9 \times 12$ cm.	Heliar 18 cm., F 4.5	£ s. d. 19 10 0	Fest-spiegel	£ s. d. 20 0 0	Holzspiegel	Wechsel-spiegel
	Heliar 18 cm., with Teletube B	23 0 0	Festele-spiegel	23 10 0	Holztele-spiegel	Wechtele-spiegel
$\frac{1}{2}$ -Plate or $12 \times 16\frac{1}{2}$ cm.	Heliar 24 cm., F 4.5	—	—	30 0 0	Grossspiegel	—

Dimensions of  $\frac{1}{4}$ -Plate Camera, closed  $7 \times 7 \times 6\frac{1}{2}$  ins.

Weight with lens, 5 lbs.

"  $\frac{1}{2}$ -Plate " "  $10 \times 10 \times 8\frac{1}{2}$  ins.

Weight with lens, 9 lbs.

**SOLID LEATHER SLING CASE** for Camera and 3 Dark Slides, Size  $9 \times 12$  cm., **£1 5s.** Size  $12 \times 16\frac{1}{2}$  cm., **£1 15s.**

A similar Camera to take Plates  $6\frac{1}{2} \times 9$  cm. is in course of construction, and will be ready at the beginning of the New Year; particulars upon application.

Send for Complete List to 12, Charterhouse St., Holborn Circus,  
London, E.C.



# Voigtländer



## New "Bijou" Reflex Camera

with Heliar Lens F 4.5.

For Plates  $4\frac{1}{2} \times 6$  cm.  $1\frac{1}{4} \times 2\frac{3}{8}$  inches.

This Camera is constructed entirely of metal and is designed to meet the requirements of Tourists, Sportsmen and others, who wish to have the advantage of an up-to-date Reflex Camera in a small and convenient size. It is fitted with an optically worked Mirror silvered on the surface and a double aperture Focal Plane Shutter for time and instantaneous exposures. The Heliar Lens is of 10 cm. 4 inches focus, fitted in a focussing mount. Negatives taken with this Camera can be considerably enlarged, without any great loss of sharpness. The body of the apparatus being made of metal, it is specially suitable for use in tropical countries. A special Telephoto Attachment is constructed for use with this Camera, giving a magnification of  $2\frac{1}{2}$  times, and in good light can be used for instantaneous work.

### PRICE.

	£	s.	d.
Bijou Reflex Camera, complete with Heliar Lens F 4.5. Magazine for 12 Plates and Leather Sling Case ... ..	17	10	0
Ditto ditto with 6 Single Metal Dark Slides and Adapter, instead of Magazine...	15	7	0
Telephoto Attachment, giving a magnification of $2\frac{1}{2}$ times ... ..	2	10	0
Six Single Metal Dark Slides, in case ...	12	0	
Adapter for using Single Metal Dark Slides ...	10	0	
Extra Magazine for 12 Plates ... ..	3	5	0

Send for Complete List to 12, Charterhouse St., Holborn Circus,  
London, E.C.

# Voigtländer

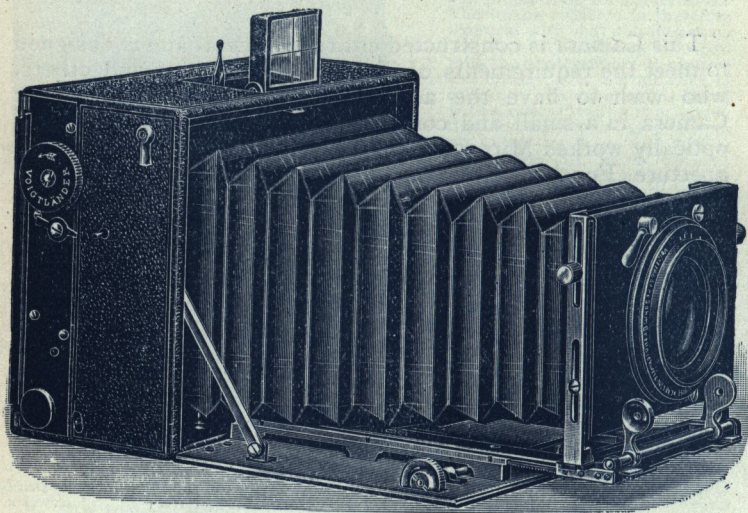
## Heliar Camera.

$\frac{1}{4}$  Plate, or  $9 \times 12$  cm. Continental size only.

This Camera is constructed of Light Metal similar to the Voigtländer Metal Folding Camera, and for high-class workmanship and mechanical ingenuity is unsurpassable. The Heliar Camera is fitted with a Focal Plane Shutter of similar construction as in the Folding Camera. The Lens generally supplied with this Camera is an 18 cm. Heliar  $7\frac{1}{2}$  ins. focus. This Lens has already made a great name for itself in the Photographic world, working at a full aperture of F 4.5. It is suitable for all the requirements of general Photography, and is the best of all modern Lenses.

The Camera is fitted with Rack and Pinion Focussing movement with extension to  $11\frac{1}{2}$  ins., enabling Lenses of various Focal lengths to be used.

A Lens Shutter can be fitted to this Camera in addition to the Focal Plane if desired, enabling the user to obtain a greater variety of exposure.



### PRICES.

With Voigtlander Lens in Countersunk Mount.	Camera with 3 Double Dark Slides, Solid Form with Folding Wood Shutters.	Camera with 3 Double Dark Slides, fitted with extractable Ebonite Shutters or Book Form with Folding Wood Shutters.
Heliar 18 cm., $7\frac{1}{2}$ ins., F. 4.5	£14 15 0	£15 5 0
Collinear II. 15 cm., F. 5.4	13 10 0	14 0 0

Telephoto Attachment to above Camera, £3 10s.

Dimensions when closed,  $6\frac{3}{4} \times 5 \times 3$  ins. Weight, without Lens, 21 lbs. 15 ozs.

Leather Case for Camera, 3 Dark Slides, 15/-

Aluminium Telescopic Tripod, 25/6

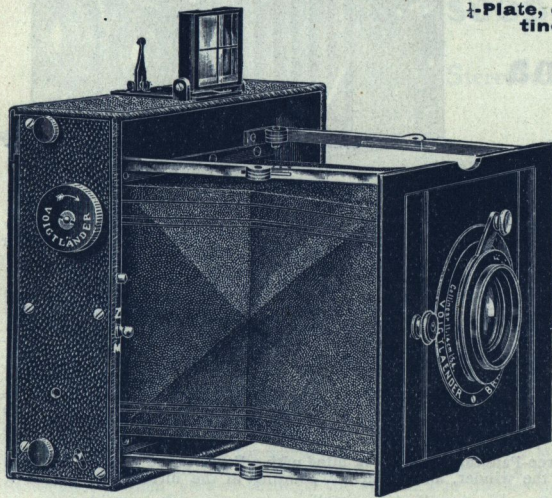
Send for Complete List to 12, Charterhouse St., Holborn Circus,  
London, E.C.



# Voigtländer

## METAL FOLDING CAMERA.

$\frac{1}{4}$ -Plate, or 9 x 12 c/m Continental Size only.



This Camera is constructed of metal, and is specially recommended for use in hot and damp climates; it combines lightness with the greatest durability. It is of superior quality, and has the following advantages:—

Rigidity of design, portability combined with lightness, a Focal Plane Shutter, which is adjustable from the outside, enabling the user to obtain any speed required up to  $\frac{1}{1000}$  sec. The shutter is also very simply manipulated, and can be worked by either mechanical or press-knob release. The Camera is fitted with rising and cross front, which may be clamped in any position.

### PRICES OF VOIGTLÄNDER METAL FOLDING CAMERA.

$\frac{1}{4}$ -Plate or 9 x 12 c/m Continental Size.

Fitted with Voigtländer Lens in Focussing Mount.	With 3 Double dark Slides, Solid Form with folding Wood Shutters.	Code Word.	With 3 Double Dark Slides, Solid Form with extractable Vulcanite Shutters, or Book Form with folding Wood Shutters.	Code Word for Camera with 3 Double Dark Slides fitted with extractable Vulcanite Shutters.	Code Word for Camera with 3 Double Dark Slides, Book Form with folding Wood Shutters.
Collinear II, $\frac{c}{m}$ 13 $\frac{1}{2}$ , F 5.4	13 0 0	Festnarcin	13 10 0	Klappnarcin	Holznarcin
II, 13 $\frac{1}{2}$ , F 5.4	16 0 0	Festtelenarcin	16 10 0	Klapptelenarcin	Holztelenarcin
"with Tele-tube A.					
Collinear III, 12, F 6.8	11 15 0	Festnathan	12 5 0	Klappnathan	Holznathan
Dynar 12, F 6	10 10 0	Festdynarch	11 0 0	Klappdynarch	Holzdynarch
" 15, F 6	11 10 0	Festsisarch	12 0 0	Klappsisarch	Holzsisarch
Heliar 15, F 4.5	13 0 0	Festflarum	13 10 0	Klappflarum	Holzflarum

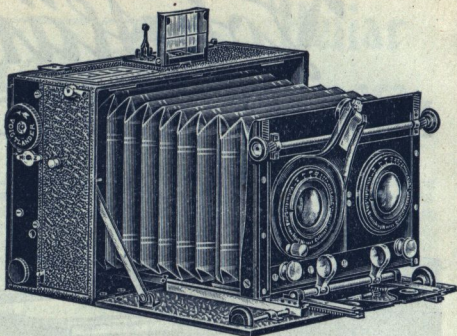
Size of Camera when closed 6 $\frac{3}{8}$  x 5 $\frac{1}{2}$  x 2 ins.

Weight without Lens, 2 lbs. 4 ozs. *Edin*

Send for Complete List to 12, Charterhouse St., Holborn Circus, London, E. C.

# Voigtländer

## Stereo-Panorama Camera.



In many respects the design of the Stereo-Panoram Camera corresponds to the Heliar Camera (see page 108 of our General List). It is made throughout of a light aluminium alloy, and is fitted with two Collinear lenses of exactly the same focus, viz., 12 cm.

In consequence of the long extension of the camera, stereoscopic pictures can be taken not only with the double objectives, but also with the Back Combinations—of 21 cm. focal length.

In both cases focussing is done by using the scale on the left of the travelling base.

The value of this Camera is—it is important to note—immeasurably increased, because POSTCARD or PANORAMIC PHOTOGRAPHS  $3\frac{1}{2} \times 5\frac{1}{2}$  ins.,  $9 \times 14$  cm. in size, may be taken WITH THE COMPLETE LENS or WITH THE BACK COMBINATION ONLY.

The Voigtländer Stereo-Panoram Camera is fitted with a Focal Plane Shutter, with the name Voigtländer on the winder, and an arrow pointing in the direction in which it should be wound.

This Shutter is of similar construction to that of the Folding and Heliar Cameras.

We wish specially to draw attention to the fact that  $3\frac{1}{2} \times 5\frac{1}{2}$  inches or  $9 \times 14$  cm. plates can be procured without difficulty from all business houses where photographic requisites are sold.

### Price of the Voigtlander Stereo-panoramic Metal Camera :

Fitted with 2 Voigtlander Objectives in Countersunk Mounts.	With 3 Double Dark Slides, Solid Form with extractable Vulcanite Shutters, or Brok Form with folding Wood Shutters.	Code word for Camera with 3 Double Dark Slides fitted with extractable Vulcanite Shutters.	Code Word for Camera with 3 Double Dark Slides, Book Form with folding Wood Shutters.
Collinear II. 12 cm., F 5.4.	£ s. d. 21 0 0	Stereonikol	Stereoanfrikol

Extra dark slides,  $3\frac{1}{2} \times 5\frac{1}{2}$  inches,  $9 \times 14$  cm., 15/- Code word for the wooden slide, "Mittelholz" for the ebonite slide, "Mittelgummi."

Leather Case for Camera and 3 double dark slides, 16/- Code word, "Stereotasche."  
Ditto for Camera and 6 double dark slides, 20/- Code word, "Stereoleder."

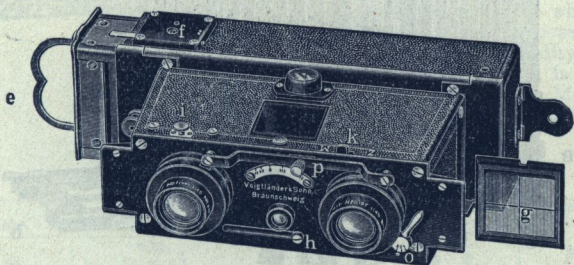
Send for Complete List to 12, Charterhouse St., Holborn Circus,  
London, E.C.



# Voigtländer

## Stereophotoscope.

The Best Camera for Perfect Stereoscopic Pictures.



The "**Stereophotoscope**" will produce the most perfect Stereoscopic pictures upon plates  $4\frac{1}{4} \times 1\frac{1}{4}$  inches. The body is constructed from one piece of metal, and it is, therefore, most suitable for warm or damp climates. The Magazine Changing Box carries 12 plates, and has an automatic counter showing number of plates used. Stereophotos when viewed through the special size Stereoscope are magnified, and appear as large as the ordinary size Stereoscopic Views. The whole apparatus is of the **very highest class workmanship.**

The Lenses are fitted with Iris Diaphragms, both of which can be regulated by one movement.

	Prices.	Code Word.
	£ s. d.	
Price of Voigtländer "Stereophotoscope," with two "Helios" lenses, F 4.5. correctly paired, two view finders, changing box, and leather sling case complete .. .. .	20 0 0	Photoskop
Ditto with two Collinear Lenses III., F 6.8 .. .. .	17 10 0	Cophotoskop
Extra magazine for 12 plates .. .. .	3 10 0	Photomagazin
Stereoscope with Achromatic lenses for viewing the transparent "Stereophotoscope" views .. .. .	1 1 0	Photostereo
Reversing Frame for making the Stereoscopic Positive without cutting the Negative .. .. .	8 0	Stereorahmen

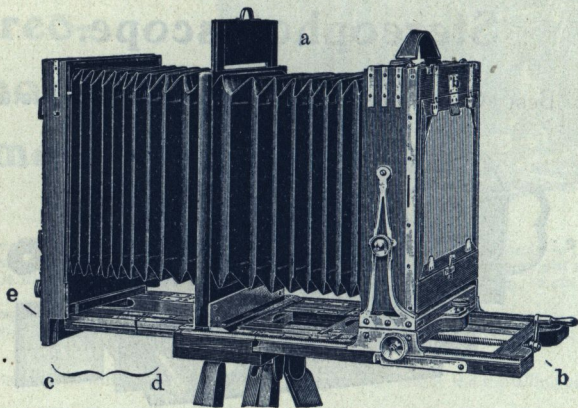
*All our "Stereophotoscopes" are engraved with the name Voigtländer.*

**Size of Stereophotoscope complete,  $5\frac{1}{8} \times 4 \times 2\frac{3}{8}$  ins. Weight, 1 lb. 15 ozs.**

Send for Complete List to 12, Charterhouse St., Holborn Circus, London, E.C.

# Voigtländer TELE-PARTITION STAND CAMERA

$\frac{1}{2}$ -Plate, or 13 × 18 cm



With Kiesling's Tele-partition.

We believe that in our new Stand Camera,  $\frac{1}{2}$ -plate or 18 × 13 cm., we have constructed an apparatus particularly suited for Tele-photography, and which gains in importance chiefly through the introduction of the *Kiesling Tele-partition*.

As is well known, by the introduction of this system the ordinary tele-tube becomes superfluous, as the tele-negative lenses are inserted in the partition wall of the camera. The elimination of all reflection is the great point of superiority in this arrangement.

Both extensions, that of the objective board as well as that of the matt-disc part, are carried out from the back, the first with a spindle, the second by rack and pinion.

In consequence of the 57 cm. (22½ inches) long extension, the enlarging power is extraordinarily great.

As a suitable object lens, our Collinear II., 20 cm., F 5.4 is specially recommended (see page 72, General List, for prices and full particulars).

Further, we would recommend our TELE-LENS SETS, consisting of the 4 Tele-negatives—33, 51, 67, 97 mm.—which should be screwed into the Kiesling Tele-partition.

This Camera is made of teak wood, metal bound, with horizontal and vertical double swing back, and can be strongly recommended for use abroad.

Size of Camera 10½ × 8½ × 3½ inches, weight 6 lbs.

The weight of one slide is 8 oz.

## PRICES.

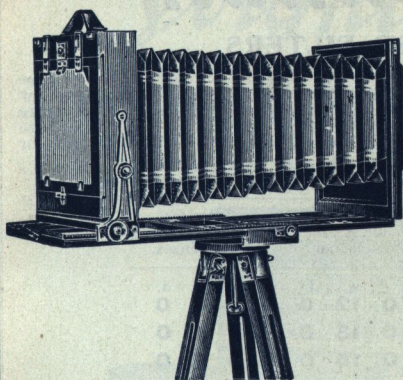
£ s. d. Code Word.

Voigtländer's Tele-partition Stand Camera, $\frac{1}{2}$ -plate or 13 × 18 cm. with Kiesling's Tele-partition, and 3 Double Dark Slides .. .. .	11	0	0	Telekamera
Collinear Lens, Series II., 20 cm. F 5.4 .. .. .	9	0	0	Gemma
Set of Tele-lenses, consisting of the 4 Tele-negatives, mounted .. .. .	8	0	0	Telenegativsatz
Extra Double Dark Slides, $\frac{1}{2}$ -Plate or 13 × 18 cm. each .. .. .	1	0	0	Telekassette
Strong Wooden Tripod Stand .. .. .	1	10	0	Telestativ
Solid Leather Sling Case, for Camera and 3 Slides .. .. .	1	10	0	Teletasche
The Whole Set, with 3 Dark Slides, forms a most complete and interesting apparatus, suitable for any description of work. Price complete .. .. .	32	0	0	Telecomp

Send for Complete List to 12, Charterhouse St., Holborn Circus, London, E.C.



# Voigtländer Field Cameras.



Model A.

This Camera is square. The extension is done by double rack and pinion focussing, one screw actuating the front and the other the back of the Camera, which enables the Camera to be always balanced on its stand. Lightness and portability have not been secured by weakening any part of the Camera, but by eliminating brass and wood from places where they served no useful purpose, and in consequence great rigidity is guaranteed. The Camera is made of the finest seasoned Mahogany, with polished and lacquered brass bindings.

Model A.

English. ins.	Size. Continental. c/m.	Length of Extension. ins.	Price, with 3 double dark slides.			Price of 1 double dark slide.		
			£	s.	d.	£	s.	d.
$4\frac{3}{4} \times 6\frac{1}{2}$	$13 \times 18$	$16\frac{1}{2}$	4	15	0	0	13	0
$6\frac{1}{2} \times 8\frac{1}{2}$	$18 \times 24$	24	6	1	0	0	16	0
$10 \times 12$	$24 \times 30$	32	8	10	0	0	19	0

Model B.

$6\frac{1}{2} \times 4\frac{3}{4}$	$13 \times 18$	24	9	10	0	1	0	0
$8\frac{1}{2} \times 6\frac{1}{2}$	$18 \times 24$	32	11	10	0	1	5	0
$12 \times 10$	$24 \times 30$	40	14	15	0	1	12	0
$16 \times 12$	$30 \times 40$	48	21	0	0	2	0	0

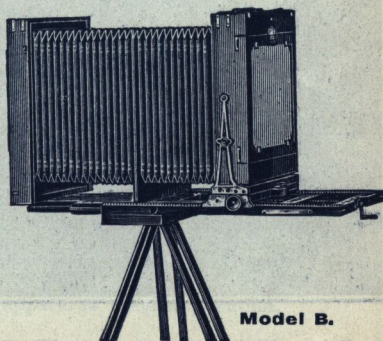
The two first sizes are fitted with Stereoscopic division.

**Model B. Triple Extension. Front extended by Rack and Pinion, and the back by a Screw.**

**Specially Brass Bound, for Use in Hot Climates.**

The rack and pinion motion, fitted for racking out the front, is so arranged that when extended the Camera is always balanced on its stand.

$6\frac{1}{2} \times 4\frac{3}{4}$  ins. and  $8\frac{1}{2} \times 6\frac{1}{2}$  ins. sizes, with Stereoscopic Division, if Desired.



Model B.

Send for Complete List to 12, Charterhouse St., Holborn Circus, London, E.C.

# Voigtländer

## CONTRAST FILTERS.

These Filters serve to completely suppress blue rays; they are made in three qualities, A, B, and Orange; they are far superior in efficiency to the ordinary yellow glass screens, which do not really act as filters, but only as dampers over the entire spectrum. The A and B are used for the suppression of the blue rays, the Orange to obtain full value from orange and red tones. These filters, circular in shape, are for use with plates sensitive to colours.

### Prices of Contrast Filter (A, B, or Orange):—

Diameter of Filter.		Price for A, B, or Orange.			Price for Mounting to fit our Lenses.		
cm.	ins.	£	s.	d.	£	s.	d.
3	1 $\frac{3}{16}$	0	12	0	0	3	0
4	1 $\frac{5}{8}$	0	13	0	0	3	0
5	2	0	15	0	0	4	0
7	2 $\frac{3}{4}$	1	0	0	0	5	0
9	3 $\frac{1}{2}$	1	8	0	0	6	0



*Photo by H. Harting.*

Taken with Collinear Lens, Series III, 15 cm., and Voigtländer Contrast Filter A.

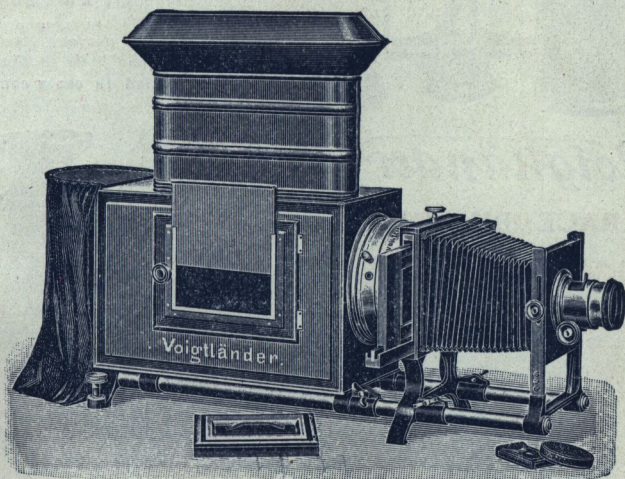
Send for Complete List to 12, Charterhouse St., Holborn Circus,  
London, E.C.



# *Voigtländer*

## Projection & Enlarging Lantern.

For plates  $9 \times 12$  c/m, or  $\frac{1}{4}$ -plate size.



The body is constructed of Russian iron lined with asbestos. By aid of the large chimney a good current of air is produced.

It is fitted with a double plano-convex condenser of  $6\frac{3}{8}$  ins. diameter. Focussing is done by means of the front draw tubes, and fine focussing by the rack and pinion movement of the lens.

### Prices—

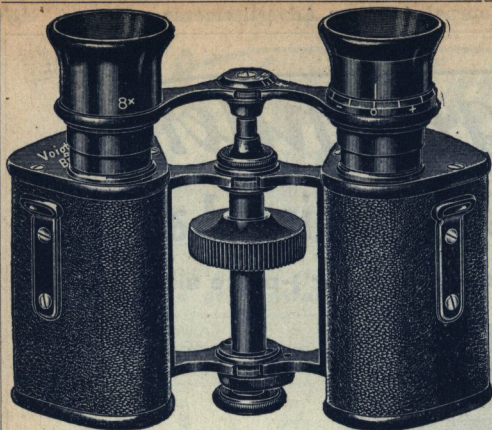
Lantern, with 18 c/m Heliar Lens F 4.5, in rack and pinion mount and set of Waterhouse stops	... ..	£16 10 0
--	--------	----------

Ditto, with Portrait Euryscope, Series III., F 4.5	£14 0 0
--	---------

Yellow screen in mount for fitting on lens, 5/-

Prices and particulars of lighting apparatus upon application.

Send for Complete List to 12, Charterhouse St., Holborn Circus, London, E.C.



*Voigtlander*

## PRISM BINOCULARS.

See fully illustrated price list gratis on application.

Magnifications.	£	s.	d.	Monocular	£	s.	d.
x 2½	5	10	0	2	10	0	0
x 4	6	0	0	2	15	0	0
x 6	6	10	0	3	0	0	0
x 8	6	15	0	3	5	0	0
x 10	7	5	0	3	10	0	0
x 12	9	0	0	4	5	0	0

\*New model with extra luminosity x 8 **£9 0 0**

\*Specially recommended for Marine purposes, Artillery practice, and use in dull light.

Supplied in cases complete.

*Voigtlander*

## RACE BINOCULAR.

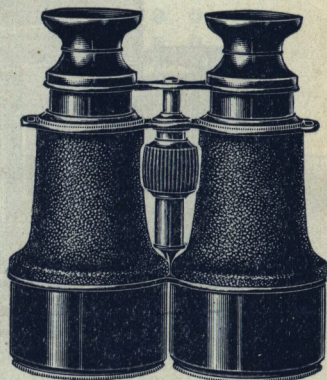
This is acceptable to all Racing Men, inasmuch as it has a magnifying power of six times, with large field, good and brilliant definition. Weight, 18½ oz.

Price, in Sling Case .. **£3 11 0**

Code Word, Feld.

"Voigtlanders, who are the oldest-established optical house in the world, have just brought out a new series of binoculars—the 'Tourist,' 'Race,' and 'Stalker,' of 4, 6, and 8 times respectively. For the use of sporting men the 'Race' binocular is of exceptionally good value, it is made of aluminium, and the weight is only 16 oz."

—*Sporting Times*.

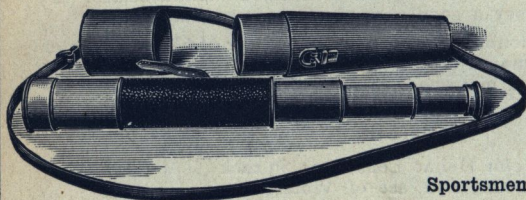


x 6.

*Voigtlander*

## DEER-STALKING TELESCOPES.

For Tourists,  
Sportsmen, Military Purposes, etc.



Magnification in Diameters.	Mounted in Brass—Bronzed.		Mounted in Aluminium—Bronzed.	
	No.	Price.	No.	Price.
14	9	£3 13 0		
18	10	4 10 0		
23	11	5 8 0	15	£8 4 0
26	12	6 13 0	16	10 13 0
26	13	9 15 0	17	14 15 0
26	14	10 16 0	18	16 16 0