



PREMO

PREMO CAMERAS

1910

MANUFACTURED BY
ROCHESTER OPTICAL DIVISION
EASTMAN KODAK COMPANY
ROCHESTER, N. Y.

F O R T O U R I S T S

P R E M O C A M E R A S A N D P R E M O F I L M P A C K S

may be obtained of practically every photographic dealer in this country. They may be had also in any part of the world in most photographic establishments, and always at the following agencies:

LONDON—Kodak, Limited, 57-61 Clerkenwell Road, E. C.; 60 Cheapside, E. C.; 115 Oxford Street, W.; 171-173 Regent Street, W.; 59 Brompton Road, S. W.; 40 Strand, W. C.

LIVERPOOL—Kodak, Limited, 96 Bold Street.

BIRMINGHAM—Kodak, Limited, 3 Victoria Square.

NEWCASTLE—Kodak, Limited, 2 St. Nicholas Bldg.

DUBLIN—Kodak, Limited, 89 Grafton Street.

GLASGOW—Kodak, Limited, 72-74 Buchanan Street.

PARIS—Kodak, Société Anonyme Française, Avenue de l'Opera, 5; Place Vendôme, 4.

LYONS—Kodak, Société Anonyme Française, 26-28 Rue de la République.

NICE—Kodak, Société Anonyme Française, 34 Avenue de la Gare.

BERLIN—Kodak Galerie, Leipzigerstrasse, 114; Unter den Linden, 26.

BRUSSELS—Kodak, Limited, 36 Rue de l'Ecuyer; 59 Montagne de la Cour.

VIENNA—Kodak Gesellschaft, m. b. H., 29 Graben.

ST. PETERSBURG—Kodak, Limited, Bolschaja Konjuschennaja 19.

MOSCOW—Kodak, Limited, 15, 16 Petrovka.

MILAN—Kodak Societa Anonima, 10 Via Vittore Pisani; 34 Corso Vittorio Emanuele.

NAPLES—Kodak Societa Anonima, 288 Via Roma.

MELBOURNE—Baker & Rouse, Prop., Ltd., 284 Collins Street.

SYDNEY—Baker & Rouse, Prop., Ltd., 375 George Street.

WHY IT SHOULD BE A PREMO

IN presenting this catalogue we have no finely worded introduction for you to read. We take it that you are interested in securing a camera. And at the very outset, we propose to set before you, without rhetorical display, the basic advantages of the Premo cameras—to show you why you personally will be best satisfied if you choose a Premo.

The Film Pack Premos are the smallest and lightest of all cameras for pictures of corresponding sizes. They are therefore easiest to carry—ideal for vacation days.

The Film Pack Premos are the simplest of all cameras to load and unload in daylight. Open the back—drop in Film Pack—close back and it's done. No other sensitive medium can be loaded nearly as easily nor as quickly.

The Film Pack Premos are the most convenient of all cameras in operation. To change films for successive exposures, merely pull out successive tabs.

All Plate Premos take plates or films with equal facility and offer that most important feature of ground glass focusing with either medium.

Premos permit the removal of one or more films for tray or tank development at any time—a unique feature.

Each Premo is fitted with the best lens, in its particular grade. Pack films are from the Eastman Non-Curling stock. As these two factors determine the class of work, it is obvious that Premos will produce as good results as can be obtained.

Premos are strongly built for service and every adjustment works easily and positively. They have twenty-five years of experience behind them.

Remember that the above are not dressed up generalities, but bare statements of facts, which you can verify for yourself at the dealer's or by catalogue specifications.

We ask nothing better than that you take this page to the nearest dealer, ask to see a Premo camera and substantiate these points one by one. Then we leave it to you.

ROCHESTER OPTICAL DIVISION
EASTMAN KODAK CO. ROCHESTER, N.Y.

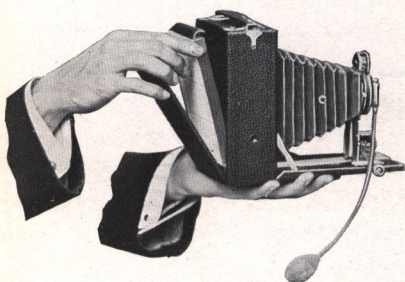
THE PREMO FILM PACK



THE Premo advantages which we have just enumerated are due largely to the perfection of this simple film system. It is so very simple in operation that one seeing it for the first time, wonders why it wasn't thought of years ago.

The Premo Film Pack is loaded in an exclusively film Premo camera or an adapter for Premo plate camera by merely opening the back, dropping pack in place and then closing the back—the easiest means of loading any sensitive photographic medium. It is light-tight and hence can be loaded and unloaded in broad daylight. After loading, the first film is presented for exposure by drawing out from the top a black paper tab, which pulls the light-protecting "safety cover" from its position in front of the first film around to the back of the pack. The twelve films are each attached individually to black papers corresponding to the "safety cover," the continuations of which are tabs at the top, numbered consecutively from 1 to 12.

So after the first exposure has been made, tab No. 1 is drawn out just as the "safety cover" was, and this pulls the exposed film No. 1 around to the back, uncovering film No. 2, which is now ready for exposure. So on for each successive exposure until the pack has been exhausted. The tabs



Loading is easy.

themselves when pulled out, being of no further use, are torn off and thrown away.

One unique advantage of the Premo Film Pack is the fact



The Pack.

THE PREMO FILM PACK

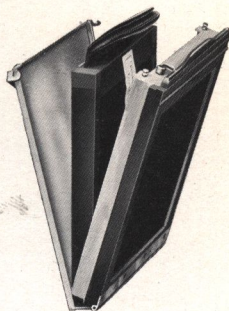
that one or more films may be removed at any time for development, without waiting until the entire pack of twelve is exposed, and they may be developed by the tray or tank system as explained on page 34. Furthermore, as the films are individual, any number of them from one to the full number can be developed in the tank.

The Film Pack may be loaded in any Premo plate camera up to and including the 5 x 7 size, by means of the Premo Film Pack Adapter, a device very similar in size and shape to an ordinary plate holder. In fact, the face is identically the same, but there is no middle septum and the back is hinged so that the pack may be dropped in place, the back closed and the adapter inserted in the camera just as the ordinary holder. The entire operation of loading and unloading is effected in broad daylight. No dark room is necessary for any part of the process.

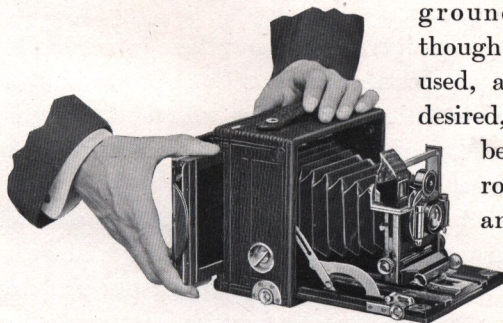
Exposures are then made with the film pack as usual, but at any time the adapter slide may be inserted and the adapter removed in daylight. In this manner each subject, before the exposure, may be sharply focused on the

ground glass just as though plates were being used, and, of course, if desired, the adapter can

be taken to the dark room at any time and as many exposures as have been made, removed for development.

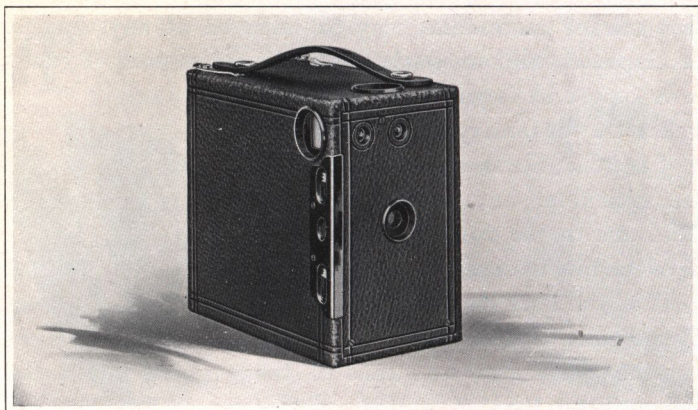


The Adapter.



The Adapter is loaded in a Premo plate camera as easily as a plate holder.

PREMO JRS. NOS 1, 1A, 3 AND 4



THE idea behind the Premo Junior cameras is to provide the simplest possible instrument with which pictures can be made—to provide a camera so easy of operation as to be readily used by the children; but at the same time producing pictures, within its scope, which will satisfy the older people.

That this ideal has been attained is shown from the fact that in the short time in which these cameras have been on the market, thousands of them may be found, not only in the hands of youngsters, but also in those of grown-up photographers, who are securing splendid pictures with these inexpensive little cameras.

As the following description will show, there is nothing in the entire process of picture taking with a Premo Junior which anybody cannot instantly perform without the slightest previous knowledge of photography. No focusing, no estimating of distance is necessary.

The Premo Junior consists of an oblong leather covered box with a hinged door at back, where the film is loaded; and at the front, a lens and simple shutter arrangement for the exposure. Two finders are also provided for centering and composing the subject to be photographed.

PREMO JRS. NOS 1, 1A, 3 AND 4

The first step is to load the camera, and this is effected in any light by opening the back, dropping in Premo Film Pack and then closing the back, requiring less than ten seconds' time.

Second, set the shutter for time or instantaneous exposure as required by the subject. This is accomplished by merely moving a lever up or down.

Then glance at the finder, which reflects the image on a reduced scale, just as it will appear in the finished picture, press a lever and the exposure is made. To change films for successive exposures, pull out successive film pack tabs as explained on page 4.

The Premo Juniors, of course, are not adapted for the wide range that the folding Premos are. But for all ordinary photography, such as portraiture, snap shots in good light, average landscape and so forth, they will be found very satisfactory by those who wish an inexpensive, simple means of securing pictures of the things they are interested in.

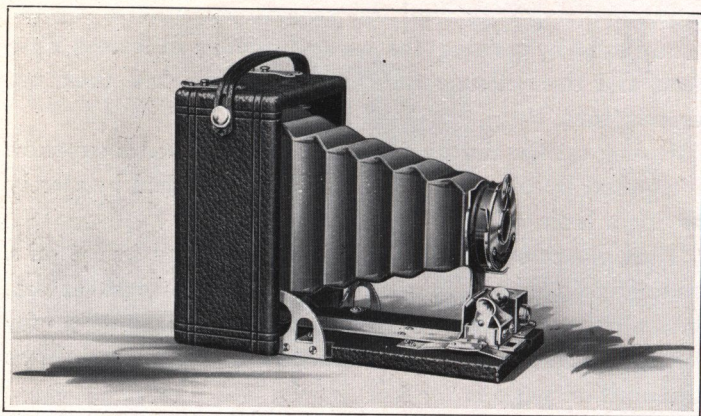
The lenses supplied with these instruments are the best single meniscus obtainable. The finders are specially treated to give brilliancy. Shutters work for time and instantaneous exposures, and each instrument is substantially built to withstand the hard usage which a lively boy would be likely to give it.

PRICES AND SPECIFICATIONS

	No. 1 2¼ x 3¼	No. 1A 2½ x 4¼	No. 3 3¼ x 4¼	No. 4 4 x 5
Premo Junior . . .	\$2.00	\$3.00	\$4.00	\$5.00
Carrying Case75	.85	1.10	1.25
Premo Film Pack (12 exposures)40	.50	.70	.90

Capacity—12 exposures without reloading. *Size of Camera*—No. 1, 3¼ x 4½ x 5¾ in.; No. 1A, 3½ x 5½ x 5¾ in.; No. 3, 4 x 5½ x 5¾ in.; No. 4, 4¾ x 6¼ x 6½ in. *Weight*—No. 1, 12 ounces; No. 1A, 14 ounces; No. 3, 20 ounces; No. 4, 25 ounces. *Shutters*—Automatic with diaphragm stops. *Lens*—Meniscus Achromatic. Two tripod sockets and two finders.

PREMOETTES 1 AND 1A



HERE are two little cameras making pictures of good size, either of which one can easily carry around in the pocket without noticing it. These, in fact, are by far the smallest and lightest of all cameras for pictures of practical size. They are the pygmies of the camera family.

And they make splendid pictures—pictures which compare favorably with those made by the largest cameras, pictures of good size for snap shot work and amateur portraiture—of excellent quality for enlargement.

The Premoettes offer all that ease of loading and operation which characterize all Premos taking the Premo Film Pack. Just open the back in any light to load, drop in a Premo Film Pack, close the back and it's done. Films are changed for successive exposures as described in the description of the film pack, and a special, inexpensive Premo Film Pack Tank is provided for the development of Premoette No. 1 film. The lens is a single meniscus fitted to automatic shutter working for time, bulb and instantaneous exposures, made especially for the Premoette.

The two models differ only in the size of pictures which they make. The No. 1 makes a $2\frac{1}{4} \times 3\frac{1}{4}$ negative, the

PREMOETTES 1 AND 1A

full size of which is reproduced on this page, while the No. 2 makes $2\frac{1}{2} \times 4\frac{1}{4}$ pictures, a shape that is particularly desirable for full length portraiture, landscapes and unusually artistic composition.

Both cameras are substantially constructed, have lasting seal grain coverings and nickeled fittings. Shutters are automatic, and lenses the best meniscus achromatic obtainable.

Premoettes are especially recommended for the use of the novice because of their dainty appearance and small size, combined with the excellent results which they produce. And for the same reasons, they will

appeal to the tourist and to anyone at vacation time, who wishes a simple, inexpensive means of recording the pleasures of his outing.



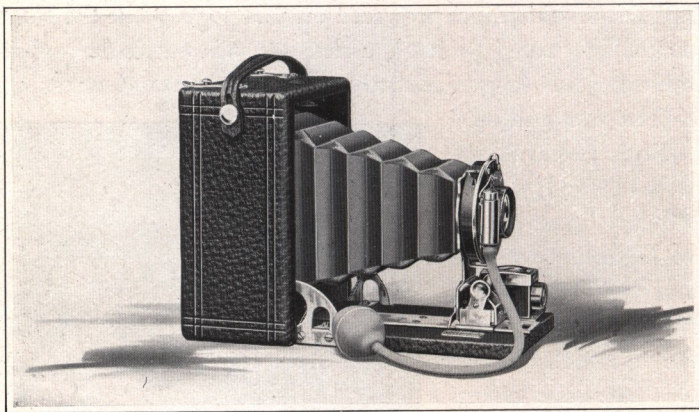
Picture made with Premoette (actual size)

PRICES AND SPECIFICATIONS

	No. 1 $2\frac{1}{4} \times 3\frac{1}{4}$	No. 1A $2\frac{1}{2} \times 4\frac{1}{4}$
Premoette, with Meniscus Lens and Premoette Shutter	\$5.00	\$6.00
Carrying Case75	.85
Premo Film Pack (12 exposures)40	.50

Capacity—12 film exposures. *Dimensions*—No. 1, $1\frac{7}{8} \times 3\frac{3}{4} \times 4\frac{1}{2}$ in.; No. 1A, $2\frac{1}{8} \times 3\frac{5}{8} \times 5\frac{1}{2}$ in. *Weight*—No. 1, 11 ounces; No. 1A, 16 ounces. *Lens*—Single Meniscus of the best quality. *Shutter*—Premoette automatic for time, bulb and instantaneous exposures. Two Tripod Sockets and Reversible Finder.

PREMOETTE SPECIAL



HERE'S one of the most popular models of our entire line, having been designed to meet the demand for a dainty, little instrument of the Premoette type but suitable for high grade lens and shutter equipments. It loads and unloads in daylight in the same easy manner as the regular Premoettes. It has the same advantages of light weight, compactness and film pack conveniences, but instead of single lens and Premoette shutter, it is fitted with double rapid rectilinear lens and Bausch & Lomb single valve automatic shutter.

And for those who desire the very finest equipment in so diminutive a camera, provision is made for fitting anastigmat lenses and high speed compound shutters, in which case the camera box is made just a trifle thicker. Such an equipment permits an exceptionally wide latitude of work for so small a pocket camera, and it should be remembered that Premoette pictures can easily be enlarged up to almost any size. With this point in mind, many photographers prefer to use such a light, portable camera as the Premoette and then enlarge the particular negatives that they care about.

The finish and general equipment of the Premoette Special are fully in keeping with the high grade of work for which it

PREMOETTE SPECIAL



Picture made with Premoette Special No. 1A (slightly reduced)

is designed. The covering is of the finest seal grain leather, the shutter and metal parts are highly nicked, and the bellows is of selected red leather.

An automatic clamp fastens the standard securely at any point of the bed where released. An accurate focusing scale is provided and a reversible, brilliant finder.

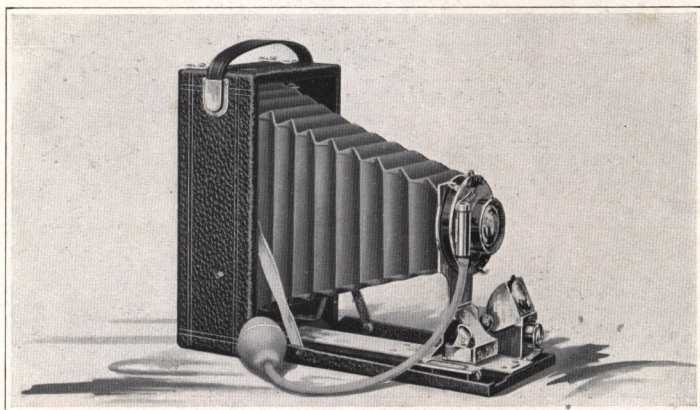
Like the regular Premoettes, these two models differ only in the size of pictures which they make and films for the No. 1 may be developed in the No. 1 Premo Film Pack Tank.

PRICES AND SPECIFICATIONS

	No. 1 2¼ x 3¼	No. 1A 2½ x 4¼
Premoette Special with R. R. Lens and S. V. Auto. Shutter	\$ 9.00	\$10.00
Premoette Special with Zeiss Kodak Anastigmat Lens <i>f</i> .6.3 and Compound Shutter	40.25	41.30
Premoette Special Carrying Case (sole leather)	1.00	1.25
Premo Film Pack (12 exposures)	.40	.50

Capacity—12 film exposures. *Dimensions*—No. 1 Special, 2½ x 3¼ x 4¾; No. 1A Special, 2½ x 3½ x 5½. *Weight*—No. 1 Special, 11 ounces; No. 1A Special, 16 ounces. *Lens*—Rapid Rectilinear. *Shutter*—Single Valve Automatic. See page 38. Two Tripod sockets, reversible finder, and automatic standard clamp.

FILM PREMO NO. 1



SIZE, Weight, Optical Equipment, Convenience, Results, Price—these are the half dozen features which will determine the desirability of any film camera to one who wishes the best and most satisfactory camera for his money. And the choice of a camera will be very much simplified, if the prospective purchaser will examine every camera which he considers, in reference to these six points.

Size—Film Premos No. 1 are much smaller than any other cameras for pictures of corresponding sizes.

Weight—Film Premos No. 1 are the lightest cameras, capacity considered, on the market.

Optical Equipment—Film Premos No. 1 are fitted with excellent rapid rectilinear lenses—amply efficient for all ordinary photographic purposes. Shutters are single valve automatic and absolutely reliable. Lenses and shutters of this grade will be found on no other cameras at our prices.

Convenience—

Of Loading—Film Premos are loaded in daylight with Premo Film Pack. (See pages 4 and 5.) To load—Open

FILM PREMO NO. 1

hinged back—drop in Premo Film Pack—close back and all is ready.

Of Exposing—To expose with Film Premos, open the camera—pull out a black paper—press the bulb and the exposure is made. For the next, pull out another paper and press the bulb; so on until the entire pack is exhausted, when it is removed and a fresh one substituted.

Of Developing—Film Pack films are developed singly or all together, in the Premo Film Pack Tank (pages 34 and 35), insuring absolute uniformity of development, certainty of results and the minimum of care and labor. Or, if preferred, they may be developed in the tray, just as dry plates, for each one is packed separate from the other.

Results—With the excellent lenses and shutters with which these cameras are fitted, results are assured if the film is right. And the film is right. It is from the same stock as the Eastman N. C. film—the film with twenty years of experience behind it.

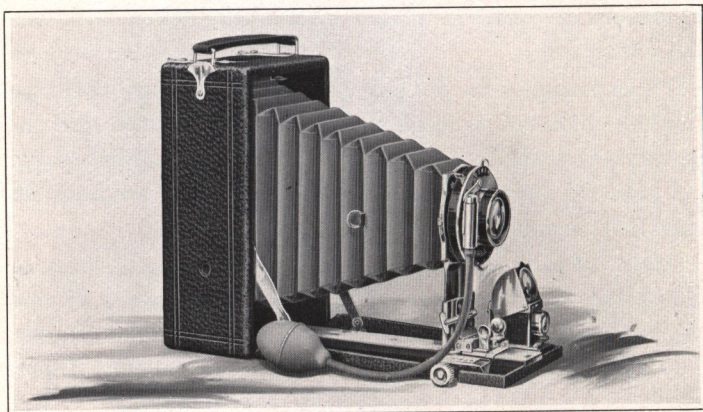
As for finish and workmanship, these cameras leave nothing to be desired. They are made of seasoned wood, with front and back panel of aluminum and coverings of fine grain leather. The 5 x 7 size has a specially constructed focusing lever, by means of which the camera can be focused for any distance in an instant.

PRICES AND SPECIFICATIONS

	3¼ x 4¼	3¼ x 5½	4 x 5	5 x 7
Film Premo No. 1 with R. R. Lens and Single Valve Auto. Shutter	\$10.00	\$12.50	\$12.50	\$20.00
Sole Leather Carrying Case	1.25	1.50	1.50	2.25
Premo Film Pack (12 exposures)	.70	.80	.90	1.60

Capacity—12 film exposures. *Box*—Mahogany. *Dimensions*—3¼ x 4¼, 2½ x 4 x 5½ in.; 3¼ x 5½, 2¼ x 4 x 6¾ in.; 4 x 5, 2¼ x 4¾ x 6 in.; 5 x 7, 2½ x 5¾ x 8½ in. *Weight*—3¼ x 4¼, 18 ozs.; 3¼ x 5½, 20 ozs.; 4 x 5, 20 ozs.; 5 x 7, 46 ozs. *Lens*—Rapid rectilinear. *Shutter*—Single valve automatic. See page 38. *Tripod Sockets*—Two. *Finder*—Reversible brilliant.

FILM PREMO NO. 3



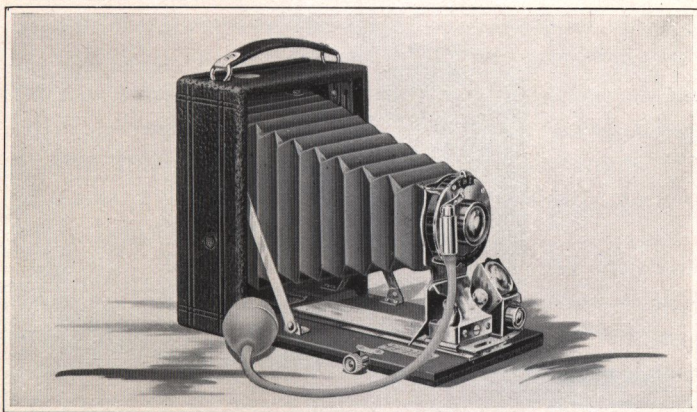
ALL that we have just said of Film Premo No. 1, as regards weight, compactness and convenience, is equally true of Film Premo No. 3, the highest type of the purely film camera. In addition it has a rack and pinion for quick, accurate focusing and a rising and falling front. The box is made of thoroughly seasoned ebonized wood, front bed and back panel of aluminum, and metal parts are highly nickeled.

PRICES AND SPECIFICATIONS

Film Premo No. 3 with R. R. Lens and S. V. Auto. Shutter . . .	3¼ x 4¼	3¼ x 5½	4 x 5
With Planatograph Lens and D. V. Auto. Shutter . . .	\$16.00	\$18.00	\$18.00
With Zeiss Kodak Anastigmat <i>f</i> .6.3 and D. V. Auto. Shutter . . .	21.00	23.00	23.00
Ditto, with Compound Shutter . . .	41.50	48.00	48.00
Sole Leather Carrying Case . . .	47.30	55.90	55.90
Premo Film Pack (12 exposures) . . .	1.25	1.50	1.50
	.70	.80	.90

Capacity—12 Film exposures. *Box*—Mahogany, Bed and Back Aluminum. *Dimensions*—3¼ x 4¼, 2¼ x 4 x 5½; 3¼ x 5½, 2¾ x 4 x 6¾; 4 x 5, 2¾ x 4¾ x 6½. *Weight*—3¼ x 4¼, 24 ounces; 3¼ x 5½, 26 ounces; 4 x 5, 26 ounces. *Lens*—Rapid Rectilinear. *Shutter*—Single Valve Automatic. See page 38. *Tripod Sockets*—Two. *Finder*—Reversible brilliant.

POCKET PREMOC



S

THE
PREMO
CAMERA

O small that it can be readily carried in any ordinary coat pocket, Pocket Premo C has a ground glass upon which every subject may be sharply focused, whether films or plates are used.

When films are used, they are loaded in daylight and developed singly or all together, by tray or tank system. For focusing, a rack and pinion is provided and accurate focusing scale for use when the ground glass is not available.

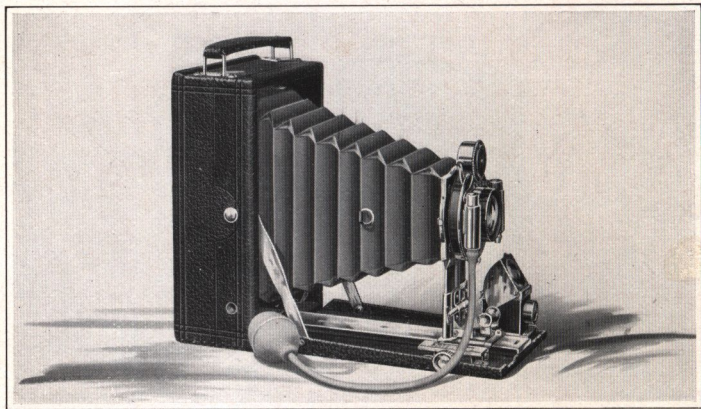
With all these advantages, combined with its excellent lens and shutter equipment, the low prices of this model are worthy of special note. Price includes one double plate holder.

PRICES AND SPECIFICATIONS

Pocket Premo C with R. R. Lens and S. V.	3¼ x 4¼	3¼ x 5½
Auto. Shutter	\$12.00	\$15.00
Double Plate Holder80	1.00
Sole Leather Carrying Case	1.50	1.75
Premo Film Pack Adapter	1.00	1.50
Premo Film Pack (12 exposures)70	.80

Capacity—12 film or 2 plate exposures. *Box*—Mahogany. *Bed*—Mahogany with rack and pinion for focusing. *Finder*—Reversible, hooded brilliant. *Tripod Sockets*—Two. *Lens*—Rapid Rectilinear. *Shutter*—S. V. Automatic. See page 38. *Dimensions*—3¼ x 4¼, 2 x 4 x 5¼ in. ; 3¼ x 5½, 2¼ x 4½ x 6¾ in. *Weight*—3¼ x 4¼, 21 ounces; 3¼ x 5½, 27 ounces.

FILMPLATE PREMO



AS the name of this model suggests, it is designed for both films and plates. It is made as light and compact as a purely film camera and at the same time possesses that prime feature of every plate camera—a ground glass for accurate focusing and perfect composition. This construction provides a camera which one can carry around as easily as the most portable film camera and which offers him every convenience of such an instrument and more. For not only can it be loaded with light, non-breakable films in daylight, but it will use plates as well, and offers the ground glass focusing advantage with either.

The instrument is thoroughly equipped for the most particular work. The lens is the best obtainable outside of the anastigmats and the shutter is the double valve Bausch & Lomb automatic, working for time, bulb, instantaneous and retarded speeds.

Each instrument is fitted with a rising and sliding front and a swing bed for use in increasing or decreasing foreground without distortion. A convenient rack and pinion attachment is supplied for focusing.

The front standard is extremely rigid, being made entirely

FILMPLATE PREMIO

of metal—an assurance that there is no possibility of leaning or bending—so that the lens is always in perfect register with the focal plane, producing a perfect picture at all times. Particular attention is called to the special clamp supplied, which automatically fastens the standard to the bed wherever set, so there is no possibility of slipping forward or backward.

The 5 x 7 Filmplate Premo deserves especial attention from those who like large size pictures and who are usually more particular as to correctness of composition and accuracy of focus. Such instruments have heretofore been associated with comparatively heavy outfits which many have considered too bulky for general amateur use. But the 5 x 7 Filmplate Premo combines all these advantages with those of daylight loading and the other Filmplate features previously enumerated, in an instrument which, compared with any other camera intended solely for films or plates, is found to be very much lighter and very much smaller.

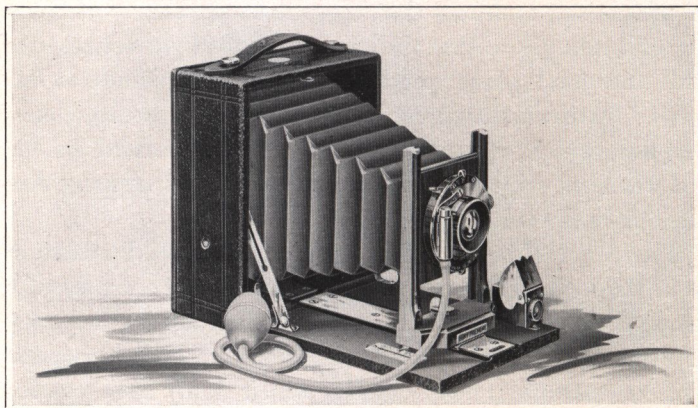
Filmplate Premos are beautifully finished. The box is of mahogany, front bed of aluminum—all covered with selected leather of fine seal grain. Metal parts are highly nickeled, and price includes plate holder and film pack adapter.

PRICES AND SPECIFICATIONS

	3¼ x 4¼	3¼ x 5½	4 x 5	5 x 7
Filmplate Premo with Planatograph				
Lens and D. V. Auto. Shutter .	\$24.00	\$26.50	\$26.50	\$35.00
With Zeiss Kodak Anastigmat f.6.3				
and D. V. Auto. Shutter .	44.50	51.50	51.50	74.50
Ditto, with Compound Shutter .	52.80	62.30	62.30	85.05
Sole Leather Carrying Case .	1.75	2.00	2.00	2.50
Premo Film Pack (12 exposures) .	.70	.80	.90	1.60

Capacity—12 film or 2 plate exposures. *Box*—Mahogany. *Bed*—Aluminum. *Rack* and pinion for fine focusing. *Front*—Rising and sliding. *Finder*—Reversible brilliant. *Tripod Sockets*—Two. *Lens*—Planatograph. *Shutter*—Double Valve Automatic. See page 38. *Dimensions*—3¼ x 4¼, 2 x 4½ x 5¾ in.; 3¼ x 5½, 2 x 4½ x 6¾ in.; 4 x 5, 2½ x 4¾ x 6½ in.; 5 x 7, 2¾ x 6 x 8¾ in. *Weight*—3¼ x 4¼, 26 ozs.; 3¼ x 5½, 30 ozs.; 4 x 5, 28½ ozs.; 5 x 7, 48 ozs.

PONY PREMO NO. 1



THE Pony Premo line of cameras for over 12 years has been the very highest exponent of the regular plate camera type. This one, the first of the series, while designed more particularly for the beginner and sold at a very modest price, is suitable for all ordinary work. It uses plates or the Premo Film Pack with all its conveniences of daylight loading, simple operation and light weight; and it has a ground glass for sharp focusing and accurate composition, which is easily available whether films or plates are being used.

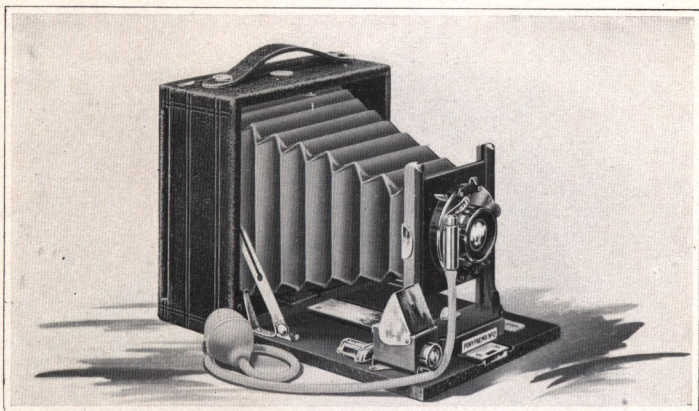
Metal parts are nickeled, covering is imitation leather and price includes carrying case and one double plate holder.

PRICES AND SPECIFICATIONS

Pony Premo No. 1, with R. R. Lens and S. V. Auto.	4 x 5
Shutter	\$12.00
Premo Film Pack Adapter	1.50
Premo Film Pack (12 exposures)	.90

Capacity—12 film or 2 plate exposures. *Box*—Mahogany, leather covered. *Front*—Rising and falling. *Carrying Case*—Imitation leather with compartment for holders. *Finder*—Reversible, hooded brilliant. *Tripod Sockets*—Two. *Lens*—Rapid Rectilinear. *Shutter*—Single Valve Automatic. See page 38. *Dimensions*—2½ x 5¼ x 6¼ in. *Weight*—24 ounces.

PONY PREMO NO. 2



THIS model has the same general characteristics as the Pony Premo No. 1, with the additional advantage of reversible back. This feature makes it a simple matter for the operator to take either horizontal or vertical pictures without changing the position of the camera proper.

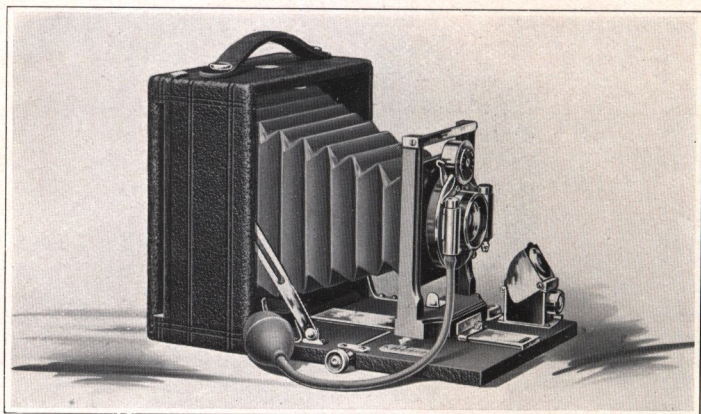
Like the preceding model, this instrument takes films or plates with equal facility, permitting ground glass focusing and tank development with either. It is substantially built of kiln dried, hand polished mahogany and covered with leather. Metal parts are nicked and price includes carrying case and one double plate holder.

PRICES AND SPECIFICATIONS

Pony Premo No. 2, with R. R. Lens and S. V.	4 x 5	5 x 7
Auto. Shutter	\$14.00	\$18.50
Premo Film Pack Adapter	1.50	2.50
Premo Film Pack (12 exposures)	.90	1.60

Capacity—12 film or 2 plate exposures. *Box*—Mahogany. *Back*—Reversible. *Front*—Rising and falling. *Finder*—Hooded brilliant, reversible. *Tripod* *Socket*—One. *Lens*—Rapid Rectilinear. *Shutter*—Single Valve Automatic. See page 38. *Carrying Case*—Imitation leather with compartment for holders. *Dimensions*—4 x 5, 2½ x 6 x 6 in.; 5 x 7, 3¼ x 8¼ x 8¼ in. *Weight*—4 x 5, 28 ounces; 5 x 7, 50 ounces.

PONY PREMO NO. 3



PONY Premo No. 3 has all the advantages of its two predecessors and the additional ones of rack and pinion for easy, exact focusing, long bellows draw, and double valve automatic shutter which works for retarded speeds as well as the usual time, bulb and instantaneous exposures.

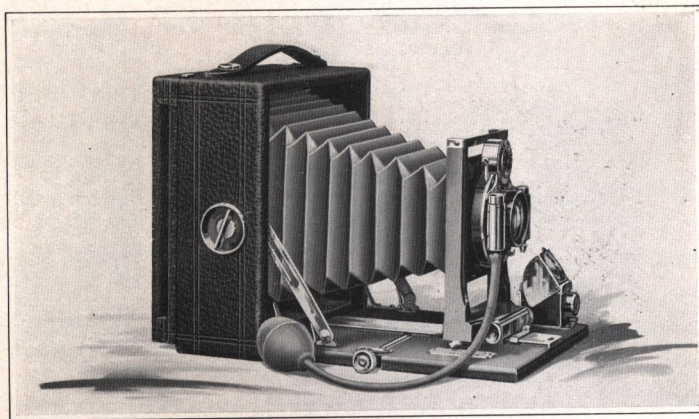
Pony Premo No. 3 may be loaded with films or plates and it offers the ground glass focusing feature with either. The instrument is handsomely finished, the shutter and all metal parts are highly nicked and the covering is grain leather. Price includes carrying case and one plate holder.

PRICES AND SPECIFICATIONS

Pony Premo No. 3, with R. R. Lens and D. V.	4 x 5	5 x 7
Auto. Shutter	\$20.00	\$26.00
Premo Film Pack Adapter	1.50	2.50
Premo Film Pack (12 exposures)	.90	1.60

Capacity—12 film or 2 plate exposures. *Box*—Mahogany, leather covered. *Bed*—Mahogany; rack and pinion attachment for fine focusing. *Back*—Reversible. *Front*—Rising and falling. *Finder*—Hooded brilliant, reversible. *Tripod Socket*—One. *Lens*—Rapid Rectilinear. *Shutter*—Double Valve Automatic. See page 38. *Carrying Case*—Sole leather, with compartment for holders. *Dimensions*—4 x 5, 2½ x 6 x 6 in.; 5 x 7, 3¼ x 8¼ x 8¼ in. *Weight*—4 x 5, 33 ounces; 5 x 7, 56 ounces.

PONY PREMO NO. 4



A

THE
PREMO
CAMERA

BEAUTIFULLY finished, thoroughly efficient outfit, suitable for expert or beginner. With all the good points of its three predecessors, it has additional equipment of self-centering swing back, automatic standard clamp and Planatograph lens.

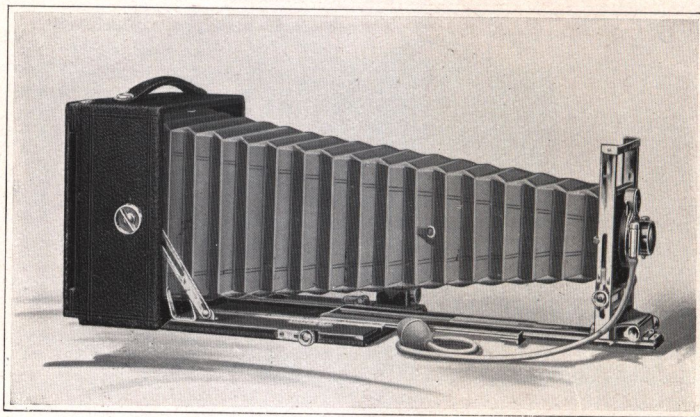
It has also sufficient bellows capacity to accommodate the single combination of the lens and is thus adapted for telephoto or long distance photography. Takes films or plates and price includes carrying case and double plate holder.

PRICES AND SPECIFICATIONS

Pony Premo No. 4, with Planatograph Lens	4 x 5	5 x 7
and Auto. Shutter	\$24.00	\$32.00
With Zeiss Kodak Anastigmat Lens <i>f</i> .6.3		
and Auto. Shutter	49.00	71.50
Ditto, with Compound Shutter	59.80	82.05
Premo Film Pack Adapter	1.50	2.50
Premo Film Pack (12 exposures)	.90	1.60

Capacity—12 film or 2 plate exposures. *Box*—Mahogany. *Bed*—Mahogany; rack and pinion for fine focusing. *Back*—Reversible. *Swing*—Vertical. *Front*—Rising and falling. *Finder*—Hooded brilliant, reversible. *Tripod Socket*—one. *Lens*—Planatograph. *Shutter*—Double Valve Automatic. See page 38. *Carrying Case*—Sole leather with compartment for holders. *Bellows*—Red leather: draw 4 x 5, 11½ in.; 5 x 7, 15½ in. *Dimensions*—4 x 5, 2¾ x 6 x 6 in.; 5 x 7, 3¼ x 8¼ x 8¼ in. *Weight*—4 x 5, 36 ozs.; 5 x 7, 60 ozs.

PONY PREMO NO. 6



SIDE from the many special features which this camera offers to the advanced amateur, it meets a very large and a very important need in the business and technical world.

The Pony Premo No. 6 can be always depended upon for satisfactory results for all such purposes, not only because of its thorough equipment, but because it insures absolute accuracy of focus and composition in its ground glass focusing feature. And while lighter and more compact than any other reversible back camera of similar design, it takes films as well and as easily as plates. Thus, when special light weight and convenience are required, the camera may be loaded in daylight with the Premo Film Pack, and as a dozen films occupy about the same space as one double plate holder and are even lighter, the advantage of such an outfit in portability is readily appreciated.

The regular lens of this model—our Planatograph—is of such quality that either front or back combination may be used singly for telephoto work, and the bellows is of sufficient length to accommodate high power telephoto attachments of several magnifications. Furthermore, the instrument will be found efficient for copying, enlarging,

PONY PREMO NO. 6

scientific or other work necessitating long bellows draw. The standard is composed largely of metal, and the rising and falling front is actuated by pinion device, which is so constructed that it will lock firmly at any point, affording a safe support for the heaviest lenses. The lens board is firmly fastened to the standard automatically, but is easily removable at any time.

Although the bed is triple extension, it is actuated by but one pinion, which is also provided with locking device, permitting the extensions to be locked firmly at any point. The swing back is pivoted at the center, operated entirely from the outside and centers itself automatically.

The shutter and all metal parts are highly nickeled. Wood is thoroughly seasoned, hand polished mahogany and the covering is a genuine seal grain leather.

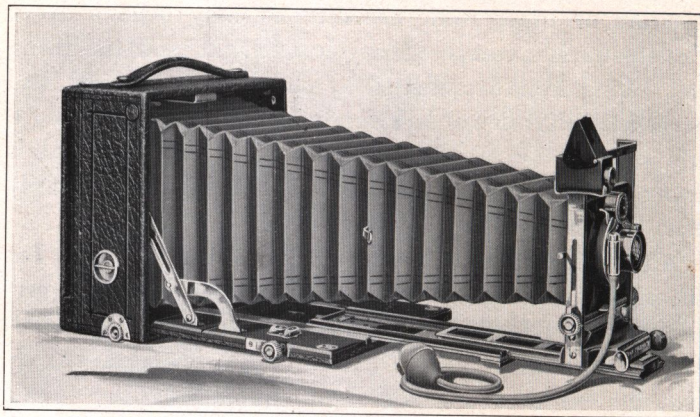
List price includes one plate holder and carrying case which is of the best sole leather, lined with red plush and having separate compartments for camera and plate holders.

PRICES AND SPECIFICATIONS

Pony Premo No. 6, with Planatograph	4 x 5	5 x 7	6½ x 8½
Lens and D. V. Auto. Shutter	\$ 37.00	\$ 47.00	\$ 62.00
With Zeiss Kodak Anastigmat f.6.3			
and D. V. Auto. Shutter	62.00	86.50	111.50
Ditto, with Compound Shutter	72.80	97.05	124.20
With B. & L. Zeiss Protar VIIa, f.6.3			
and Auto. Shutter	92.50	120.00	150.50
Ditto, with Compound Shutter	103.30	130.55	163.20
Premo Film Pack Adapter	1.50	2.50	
Premo Film Pack (12 exposures)	.90	1.60	

Capacity—12 film or 2 plate exposures. *Box*—Mahogany. *Bed*—Triple extension; rack and pinion actuated. *Back*—Reversible. *Swing*—Vertical. *Front*—Rising and falling; rack and pinion actuated. *Lens Board*—Removable; size, 4 x 5, 2⅝ x 2⅝ in.; 5 x 7, 3½ x 3½ in.; 6½ x 8½, 4½ x 4½ in. *Finder*—Hooded brilliant, reversible. *Tripod Sockets*—two. *Case*—Sole leather, plush lined with compartment for holders. *Lens*—Planatograph. *Shutter*—Double Valve Automatic. See page 38. *Bellows*—Red leather; draw 4 x 5, 14⅜ in.; 5 x 7, 19½ in.; 6½ x 8½, 24 in. *Dimensions*—4 x 5, 3½ x 6 x 6 in.; 5 x 7, 4 x 8¼ x 8¼ in.; 6½ x 8½, 5 x 10 x 10 in. *Weight*—4 x 5, 3¼ lbs.; 5 x 7, 5¼ lbs.; 6½ x 8½, 8½ lbs.

PONY PREMO NO. 7



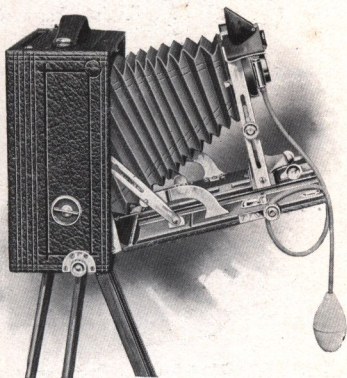
DESIGNED for those who want the finest hand camera possible, this model combines all the special advantages of Pony Premo No. 6 with those additional features which go to make the most complete hand camera manufactured for either amateur or business purposes. The drop bed construction permits the use of lenses of the widest angle. By unclaspings the two supplementary side arms, the bed can be dropped down so as to remove it entirely from the path of the short focus lens, and a supplementary bed placed conveniently at the top of the camera when not in use, affords easy focusing facilities.

The movable extensions are constructed entirely of metal, are actuated by a single pinion and attached to the wooden bed by metal angle pieces, making the operation impervious to changing atmospheric conditions. The swing back is actuated by rack and pinion, with locking device, and the bellows is of such length that either of the Planatograph lens combinations can be used singly or high power telephoto attachments may be fitted.

Every feature of this outfit is positive and thoroughly reliable. Nothing has been forgotten or overlooked in its construction.

PONY PREMO NO. 7

The rising and falling front is operated by rack and pinion with locking device. The standard clamp is automatic. An accurate double spirit level is supplied, hooded, reversible finder of the greatest brilliancy, and the back is reversible. The finish and general workmanship of the instrument must be seen to be appreciated. The shutter and all metal parts are highly nicked and the covering is of the best seal grain leather. Price includes plate holder and sole leather carrying case, lined with the best red plush. Like all Pony Premos, it takes plates or the Premo Film Pack with all its conveniences.

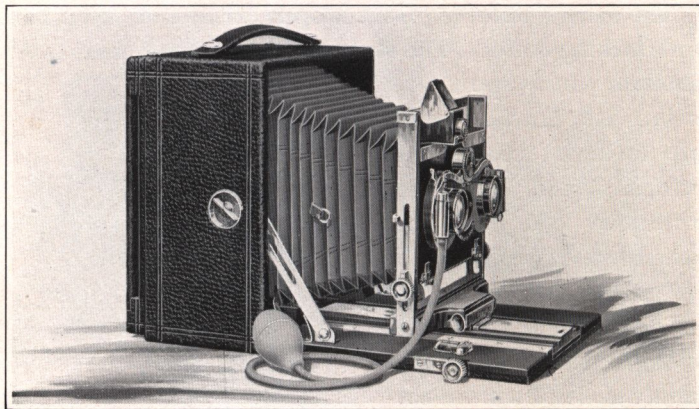


PRICES AND SPECIFICATIONS

Pony Premo No. 7, with Planatograph Lens and D. V. Auto. Shutter	4 x 5	5 x 7	6½ x 8½
With Zeiss Kodak Anastigmat Lens			
f.6.3 and Auto. Shutter	75.00	99.50	124.50
Ditto, with Compound Shutter	85.80	110.05	137.20
With B. & L. Zeiss Protar VIIa Lens			
f.6.3 and Auto. Shutter	105.50	133.00	163.50
Ditto, with Compound Shutter	116.30	143.55	176.20
Premo Film Pack Adapter	1.50	2.50	
Premo Film Pack	.90	1.60	

Capacity—12 film or 2 plate exposures. *Box*—Mahogany. *Bed*—Mahogany, with triple extension. *Back*—Reversible. *Swing*—Vertical; rack and pinion actuated, with locking device. *Front*—Rising and falling; rack and pinion actuated, with locking device. *Lens Board*—Removable: size, 4 x 5, 2½ x 2½ in.; 5 x 7, 3½ x 3½ in.; 6½ x 8½, 4½ x 4½ in. *Finder*—Hooded brilliant, reversible. *Tripod Sockets*—Two. *Lens*—Planatograph. *Shutter*—Double Valve Automatic. See page 38. *Carrying Case*—Sole leather, plush lined, with compartment for holders. *Bellows*—Red Leather; draw 4 x 5, 13¾ in.; 5 x 7, 19 in.; 6½ x 8½, 22 in. *Dimensions*—4 x 5, 3½ x 6¼ x 6¼ in.; 5 x 7, 4 x 8½ x 8½ in.; 6½ x 8½, 5 x 9¾ x 9¾ in. *Weight*—4 x 5, 3½ lbs.; 5 x 7, 5½ lbs.; 6½ x 8½, 8½ lbs.

STEREO PREMOS



FOR Stereo Cameras we have taken the three most complete Pony Premo models with all their various adjustments and added the best stereo automatic shutter obtainable and a carefully matched pair of Planatograph lenses to each. The result in each case is a stereo camera having all the special features of the corresponding single models and the assurance that any class of pictures obtainable with the regular camera can be as easily secured with the stereo. Furthermore, by using an extra lens board and purchasing a single lens and shutter, regular 5 x 7 pictures can be made, and films or plates may be used in either camera. List price includes camera with stereo shutter and Planatograph lenses, sole leather carrying case, double plate holder and one extra lens board.

PRICES AND SPECIFICATIONS

No. 4 Stereo Premo, complete	.	.	.	\$50.00
No. 6 Stereo Premo, complete	.	.	.	65.00
No. 7 Stereo Premo, complete	.	.	.	78.00

For prices on these cameras with Anastigmat Lenses, see page 33.

Specifications for these cameras are the same as those for the corresponding single models, excepting that they are made a trifle wider to accommodate the stereo equipment.

THE VIEW CAMERAS



FROM the start we have given particular attention to cameras of this class, and in the case of all four that we list, special attention is called to the rigidity and strength obtained without sacrifice of compactness and easy manipulation of parts.

Thus these cameras will withstand the hardest usage, while at the same time they fold up very compactly and are light in weight and easy to carry. The cameras are finely finished, all wooden parts are hand polished, and the metal trimmings are lacquered brass.

Every adjustment of importance to the worker in this class of photography is provided. Each view camera is fitted with



Supplementary Light-Trap

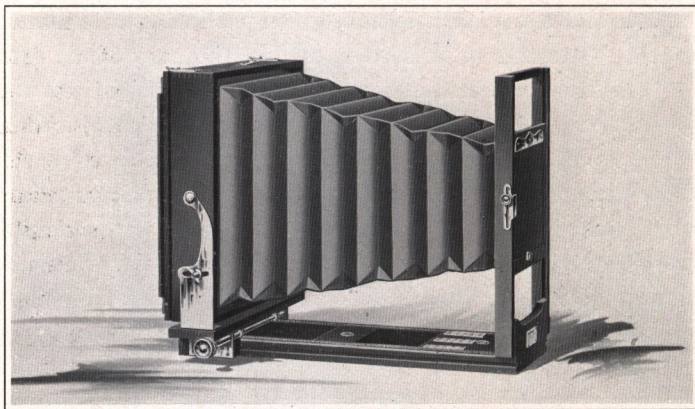
horizontal and vertical swing, reversible back, rising and falling front, rack and pinion focusing attachment, and are all constructed so that lenses of extreme angle may be used.

An exclusive feature is the supplementary light-trap incorporated in the construction of all our view camera backs, excepting the Premo View, and which in reality forms a double light-lock.

This trap automatically closes the instant the slide is withdrawn and remains tightly closed over the slide opening until the slide is again inserted. This makes it impossible for any light to reach the plate, should the light-lock in the holder be defective in any manner.

The list price of all view cameras includes a durable felt-lined canvas case and one plate holder. In each case separate compartments are provided for the camera and several plate holders, excepting for R. O. C. View. The regular case for this camera is of the square style without partition. Long case can, however, be supplied when desired, at a slight advance in price.

THE R. O. C. VIEW



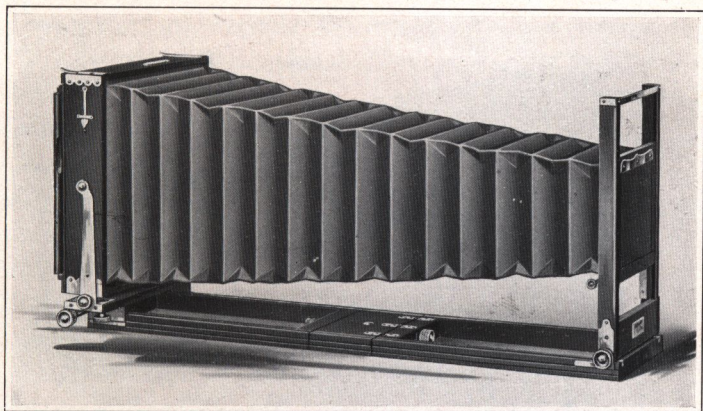
THIS is the most efficient and reliable view camera ever offered to commercial photographers at such low prices. The front standard being firmly attached to the bed is extremely rigid and hence will accommodate the heaviest lenses. Focusing is from the back entirely, by rack and pinion adjustment. The camera has both vertical and horizontal swing, rising and falling front, and reversible back, equipped with supplementary light-trap. It is especially adapted for interior work as the back can be moved as close to the front as desired, so that lenses of extreme wide angle may be readily used. The outfit as listed comprises camera, one plate holder and carrying case.

PRICES AND SPECIFICATIONS

	5 x 7	6½ x 8½	8 x 10
R. O. C. View	\$15.00	\$16.00	\$17.00
Symmetrical Lens and Unicum			
Shutter (extra)	10.00	15.00	18.00
Symmetrical Lens and D. V.			
Auto. Shutter (extra)	13.50	18.50	21.50

Bellows Draw—5 x 7, 14 in.; 6½ x 8½, 15½ in.; 8 x 10, 17 in. *Weight*—5 x 7, 4 lbs., 6½ x 8½, 4¾ lbs.; 8 x 10, 5¾ lbs. *Size of Lens Board*—5 x 7, 3¾ x 3¾ in.; 6½ x 8½, 4¼ x 4¼ in.; 8 x 10, 5 x 5 in. *Carrying Case*—Square style canvas.

EMPIRE STATE VIEW



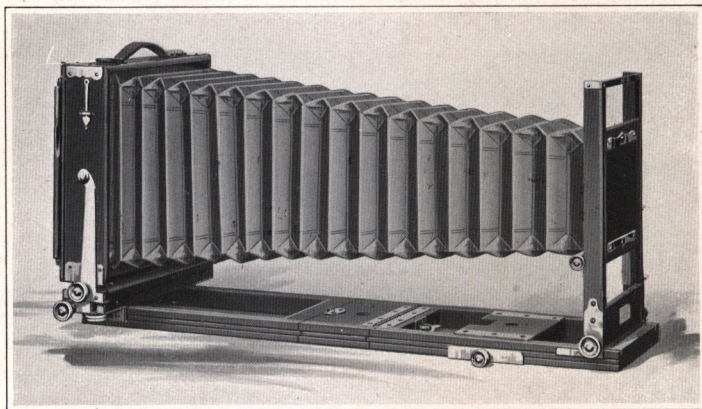
NO view camera has so withstood the test of time as has the Empire State. For over fifteen years it has been the favorite among commercial photographers for its peculiar adaptability for all such work. Has horizontal and vertical swings, reversible back with supplementary light-trap and rising and falling front, actuated by rack and pinion, and a very great focal capacity. Constructed of hand polished mahogany, with lacquered brass fittings. Price includes long style carrying case and one plate holder.

PRICES AND SPECIFICATIONS

	5 x 7	6½ x 8½	8 x 10	11 x 14	14 x 17
Empire State	\$21.00	\$22.00	\$25.00	\$36.00	\$60.00
Symmetrical Lens and Unicum Shutter (extra)	10.00	15.00	18.00		
Symmetrical Lens and D.V. Auto. Shutter (extra)	13.50	18.50	21.50		

Bellows Draw—5 x 7, 22 in.; 6½ x 8½, 27 in.; 8 x 10, 30 in.; 11 x 14, 37 in.; 14 x 17, 48 in. *Weight*—5 x 7, 6½ lbs.; 6½ x 8½, 7½ lbs.; 8 x 10, 9½ lbs.; 11 x 14, 16 lbs.; 14 x 17, 23¾ lbs. *Size of Lens Board*—5 x 7, 3¾ x 3¾ in.; 6½ x 8½, 4¼ x 4¼ in.; 8 x 10, 5 x 5 in.; 11 x 14, 5¾ x 5¾ in.; 14 x 17, 7 x 7 in. *Carrying Case*—Long style canvas, with compartment for holders. Up to and including the 11 x 14 size, has both front and back focus; larger sizes are made with back focus only.

EMPIRE STATE NO. 2



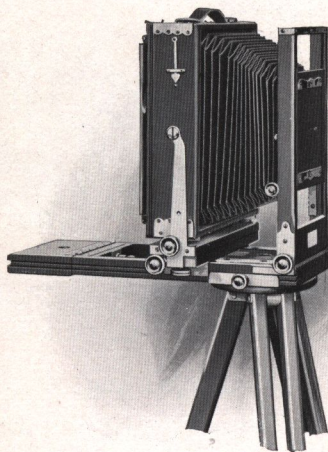
HAVING all the advantages of the original Empire State, this splendid instrument embodies additional features which make for even greater convenience and efficiency—features designed to meet every condition which may arise, so that the most particular photographer can wish for no convenience or adjustment which it does not possess. And these features are no mere talking points, but carefully thought out advantages which the photographer who has any considerable use for a view camera will be quick to appreciate.

A noticeable improvement is the method of locking the extensions, not by the old-fashioned, long threaded screw, but by means of a specially constructed device which locks by merely being pushed in and given a quarter turn. This not only holds the extensions perfectly rigid but makes it much easier and quicker to set the instrument up, ready for work.

A sliding tripod block is provided, which clamps securely at any point in the front extension, making it possible to always support the box directly above the tripod when short focus lenses are used. And no matter what focus of lens is used, the bellows is automatically kept up in place by a spring arrangement attached to the inside bellows frame. This re-

EMPIRE STATE NO. 2

quires no attention by the operator as it folds automatically when the instrument is closed. This instrument is provided with both front and back focus, permitting the back to be racked up as close to the front as desired. The lens board is very large, will accommodate the heaviest lenses and is mounted in a strong, perfectly rigid standard. Back is reversible, with supplementary light-excluding device, and vertical and horizontal swings are provided; both actuated by rack



Tripod may be attached at any point

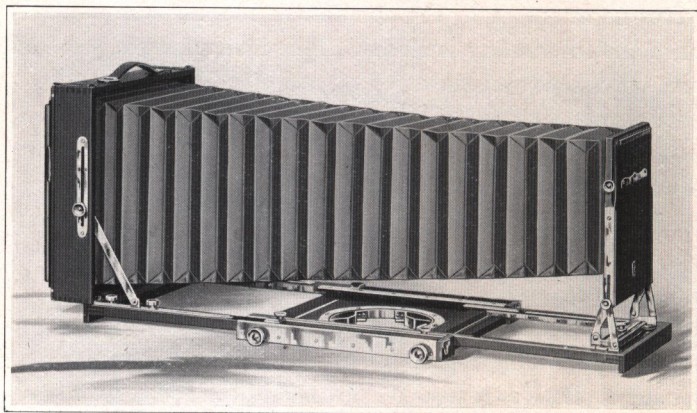
and pinion. Rising and falling front is also actuated by rack and pinion and the nuts which control all these adjustments are large and located on the right hand side of the camera; while the corresponding binding nuts are located on the left hand side, avoiding confusion between binding and operating parts. Empire State No. 2 is made of polished, kiln dried mahogany. Corners are dovetailed and reinforced by brass angle pieces. Price includes case and one double plate holder.

PRICES AND SPECIFICATIONS

	5 x 7	6½ x 8½	8 x 10
Empire State No. 2	\$23.00	\$25.00	\$28.00
Symmetrical Lens and Unicum Shutter			
(extra)	10.00	15.00	18.00
Symmetrical Lens and D. V. Auto. Shutter			
(extra)	13.50	18.50	21.50

Bellows Draw—5 x 7, 22 in.; 6½ x 8½, 27 in.; 8 x 10, 30 in. *Weight*—5 x 7, 7¼ lbs.; 6½ x 8½, 8¾ lbs.; 8 x 10, 11¼ lbs. *Size of Lens Board*—5 x 7, 3¾ x 3¾ in.; 6½ x 8½, 4¼ x 4¼ in.; 8 x 10, 5 x 5 in. *Carrying Case*—Canvas, long style, with compartment for holders.

PREMO VIEW CAMERA



THIS camera is made to combine a strikingly handsome appearance with the best possible equipment. It focuses from both front and rear, so that the extra long bellows may be readily used for telephoto or other work, or the body of the instrument brought forward, permitting the use of lenses of the widest angle, without "cutting off." It always balances on the tripod, has vertical and horizontal swing, and extreme rising front easily manipulated. Back is reversible; lens board removable and very large; standard support strong and rigid. The case is waterproof with separate compartments for tripod, holders, extra lenses or other accessories. Price includes camera, tripod, plate holder and case.

PRICES AND SPECIFICATIONS

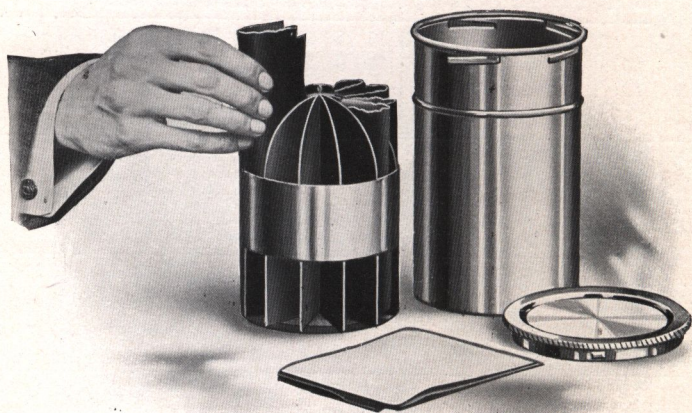
Premo View Camera	6½ x 8½	8 x 10
Symmetrical Lens and Unicum Shutter (extra)	\$52.00	\$58.00
Symmetrical Lens and D. V. Auto. Shutter (extra)	15.00	18.00
	18.50	21.50

Bellows Draw—6½ x 8½, 27 in.; 8 x 10, 30 in. *Weight*—6½ x 8½, 8 lbs.; 8 x 10, 9½ lbs. *Size of Lens Board*—6½ x 8½, 4 x 4 in.; 8 x 10, 4½ x 4½ in. *Carrying Case*—Trunk board with space for camera, holders, accessories and tripod.

SPECIAL LENS AND SHUTTER EQUIPMENTS

STYLE OF CAMERA		Fitted with Zeiss Kodak Anastigmat, f.6.3 Lens				Fitted with B. & L.-Zeiss Tessar Lens, Series 11B, f.6.3				Fitted with B. & L.-Zeiss Protar Lens, Series VIIIA, f.6.3				Fitted with Cooke Lens, Series 111, f.6.5			
		Compound Shutter		B. & L. Auto. Shutter		Compound Shutter		B. & L. Auto. Shutter		Compound Shutter		B. & L. Auto. Shutter		Compound Shutter		B. & L. Auto. Shutter	
		No.	Price	No.	Price	No.	Price	No.	Price	No.	Price	No.	Price	No.	Price	No.	Price
Film Premo No. 3	$3\frac{1}{4} \times 4\frac{1}{4}$	2L.		2L.		4L.		4L.								3L.	
		0S.	\$ 47 30	1S.	\$ 41 50	0S.	\$ 59 80	1S.	\$ 54 00							0S.	\$60 30
	$3\frac{1}{4} \times 5\frac{1}{2}$	3L.		3L.		5L.		5L.								4L.	
		1S.	55 90	1S.	48 00	1S.	64 90	1S.	57 00							1S.	68 40
	4 x 5	3L.		3L.		5L.		5L.								4L.	
		1S.	55 90	1S.	48 00	1S.	64 90	1S.	57 00							1S.	68 40
Filmplate Premo	$3\frac{1}{4} \times 4\frac{1}{4}$	2L.		2L.		4L.		4L.								3L.	
		0S.	52 80	1S.	44 50	0S.	65 30	1S.	57 00							0S.	65 80
	$3\frac{1}{4} \times 5\frac{1}{2}$	3L.		3L.		5L.		5L.								4L.	
		1S.	62 30	1S.	51 50	1S.	71 30	1S.	60 50							1S.	74 80
	4 x 5	3L.		3L.		5L.		5L.								4L.	
		1S.	62 30	1S.	51 50	1S.	71 30	1S.	60 50							1S.	74 80
Pony Premo No. 4	5 x 7	5L.		5L.		5aL.		5aL.								6L.	
		2S.	85 05	2S.	74 50	2S.	95 55	2S.	85 00							2S.	98 05
	4 x 5	3L.		3L.		5L.		5L.		3L.	\$ 90 30	3L.				4L.	
		1S.	59 80	1S.	49 00	1S.	68 80	1S.	58 00	1S.	\$ 79 50	1S.				1S.	72 30
	5 x 7	5L.		5L.		5aL.		5aL.		8L.		8L.				6L.	
		2S.	82 05	2S.	71 50	2S.	92 55	2S.	82 00	2S.	115 55	2S.	105 00			2S.	95 05
Pony Premo No. 6	4 x 5	3L.		3L.		5L.		5L.		3L.		3L.				4L.	
		1S.	72 80	1S.	62 00	1S.	81 80	1S.	71 00	1S.	103 30	1S.	92 50			1S.	85 30
	5 x 7	5L.		5L.		5aL.		5aL.		6L.		6L.				6L.	
		2S.	97 05	2S.	86 50	2S.	107 55	2S.	97 00	2S.	130 55	2S.	120 00			2S.	110 05
	$6\frac{1}{2} \times 8\frac{1}{2}$	6L.		6L.		7L.		7L.		11L.		11L.				7L.	
		3S.	124 20	3S.	111 50	3S.	153 20	3S.	140 50	3S.	163 20	3S.	150 50			3S.	161 20
Pony Premo No. 7	4 x 5	3L.		3L.		5L.		5L.		3L.		3L.				4L.	
		1S.	85 80	1S.	75 00	1S.	94 80	1S.	84 00	1S.	116 30	1S.	105 50			1S.	98 30
	5 x 7	5L.		5L.		5aL.		5aL.		8L.		8L.				6L.	
		2S.	110 05	2S.	99 50	2S.	120 55	2S.	110 00	2S.	143 55	2S.	133 00			2S.	123 05
	$6\frac{1}{2} \times 8\frac{1}{2}$	6L.		6L.		7L.		7L.		11L.		11L.				7L.	
		3S.	137 20	3S.	124 50	3S.	166 20	3S.	153 50	3S.	176 20	3S.	163 50			3S.	174 20
Premoette No. 1 Special . . .	$2\frac{1}{4} \times 3\frac{1}{4}$	1L.				3L.											
		0S.	40 25			0S.	51 25										
Premoette No. 1A Special . .	$2\frac{1}{2} \times 4\frac{1}{4}$	2L.		2L.		4L.		4L.									
		0S.	41 30	1S.	35 50	0S.	53 80	1S.	48 00								
Stereo Premo No. 4	5 x 7			2L.	93 00			4L.	118 00			2L.	154 00			3L.	119 00
Stereo Premo No. 6	5 x 7			2L.	108 00			4L.	133 00			2L.	169 00			3L.	134 00
Stereo Premo No. 7	5 x 7			2L.	121 00			4L.	146 00			2L.	182 00			3L.	147 00

PREMO FILM PACK TANK



TANK Development is the greatest advance in photographic convenience of recent years. It is one of the most important discoveries which has ever been offered to the photographer. For tank development assures the veriest beginner that every pack of films placed in the tank, where the simple directions are implicitly followed, will come out developed as well or better than that pack could be developed in the tray by the most experienced photographer. It is simplicity itself. It requires no experience, no lengthy manipulation in a close dark-room. And we recommend the tank system to the most careful workers as being infinitely simpler than the older method and producing results superior to those which can be obtained by the most painstaking tray development.

The Premo Film Pack Tank consists of two pieces—a metal receiver or cage for the films, and a tank with cover for the developing fluid. The entire outfit is self contained and can be carried without any trouble at all.

The cage is divided into twelve compartments—in the 5 x 7 size, six—each accommodating one film. As the film is taken from the pack it is held between the thumb and

PREMO FILM PACK TANK

fingers, slightly bent from top to bottom, and slipped into its respective compartment. When all the compartments are filled, the cage is placed in tank, which has been previously filled with developer, the top replaced and the films left to develop for a certain specified time. No further attention is necessary except to turn the tank, end for end, several times during the progress of development.

At the expiration of the full time, open the tank, take out the cage, remove films, place them in a tray of water for a moment, then transfer to the fixing bath. Development is completed. Rinse out cage and tank and set them aside.

The operation of removing films from the pack and loading the cage is done, of course, in a darkened room by the light of a ruby lamp. During the day any darkened closet will suffice, at night any dark room in which the shades are drawn will answer. To load the films in cage will take only two or three minutes, and as soon as the top is placed on tank it may be brought out into any light and left until development is completed.

If desired to develop less than a dozen films, one merely removes from his pack as many films as have been exposed, places them in the cage, and proceeds in the same manner as described above.

The cage of the No. 1 Tank is slightly different from that shown in the illustration, but the method of loading is the same and of course the results are just as dependable.

PRICES AND SPECIFICATIONS

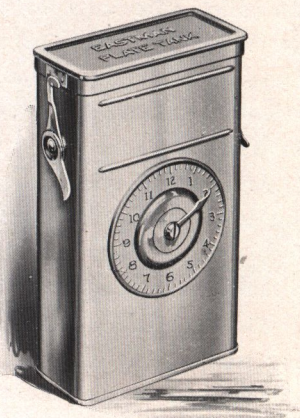
Premo Film Pack Tank No. 1, for 12 $2\frac{1}{4} \times 3\frac{1}{4}$ films	. \$1.25
Do, No. 2, for 12 $3\frac{1}{4} \times 4\frac{1}{4}$, $3\frac{1}{4} \times 5\frac{1}{2}$ or 4×5 films	. 3.50
Do, No. 3, for 6 5×7 films	. 4.00
Premo Tank Developing Powders, in packages of 6, No. 1	.20
Premo Tank Developing Powders, in packages of 6, No. 2	.25
Premo Tank Developing Powders, in packages of 6, No. 3	.35
Acid Fixing Powder, per 1 pound package	.25

EASTMAN PLATE TANK



IN the Eastman Plate Tank, plates may be developed in the same manner and with the same assurance of excellent results as may films in the Premo Film Pack Tank. The theory of construction is precisely the same, with of course such differences as are necessary because of the physical difference between films and plates.

It consists of a metal solution cup, a cage for holding twelve or less plates and a loading block for loading plates into the cage. In the $3\frac{1}{4} \times 4\frac{1}{4}$ and 4×5 sizes, the cage of plates may be developed in a Premo Film Pack Tank, so that one using a Premo that takes films or plates and having a Premo Film Pack Tank needs only purchase the cage and loading block of the plate tank for the tank development of his plates, an advantage in economy.



PRICES AND SPECIFICATIONS

Eastman Plate Tank, 4×5 , including Solution Cup, Plate Cage and Loading Block	\$ 3.50
Ditto, 5×7	4.50
Ditto, 8×10	10.00
Kit for 4×5 Tank, to take $3\frac{1}{4} \times 4\frac{1}{4}$ plates	.50
Kit for 5×7 Tank, to take $4\frac{1}{4} \times 6\frac{1}{2}$ and $4\frac{3}{4} \times 6\frac{1}{2}$ plates	.75
Extra Adjustable Kit for 8×10	1.00
Plate Cage and Loading Block for 4×5 plates (can be used in 4×5 Premo Film Pack Tank)	1.75
Eastman Plate Tank Powders, for 4×5 tank, per package, $\frac{1}{2}$ dozen	.20
Ditto, for 5×7 tank, per package, $\frac{1}{2}$ dozen	.35
Ditto, for 8×10 tank, per package, $\frac{1}{2}$ dozen	.50
Kodak Acid Fixing Powder, per 1-pound package	.25

PREMO LENSES



ALL Premo Cameras are regularly fitted with the best lenses obtainable, each in its particular grade. For special equipments see page 33.

We list below several lenses in barrel. Manufacturers' prices on any others will be gladly supplied on demand.

ZEISS KODAK ANASTIGMAT LENS $f.6.3$

No.	Size of Plate Covered with		Price
	Full Aperture	Equivalent Focus	
1	2¼ x 3¼	4½ inches	\$21.50
2	3¼ x 4¼	5 inches	22.00
3	4 x 5	6⅛ inches	27.00
5	5 x 7	8¼ inches	40.00
6	6½ x 8½	10 inches	54.00

B. & L.-ZEISS PROTAR LENS—SERIES VII A

No.	Size of Plate Covered with Full Aperture	Focus of Front Lens	Focus of Back Lens	Combined Focus	Speed	Price
2	$3\frac{1}{4}$ x $4\frac{1}{4}$	$8\frac{3}{4}$ in.	$7\frac{3}{8}$ in.	$4\frac{1}{2}$ in.	$f: 7$	\$ 52 50
3	4 x 5	$11\frac{3}{8}$ in.	$7\frac{3}{8}$ in.	5 in.	$f: 7-7$	57 50
5	$4\frac{1}{4}$ x $6\frac{1}{2}$	$11\frac{3}{8}$ in.	$8\frac{3}{4}$ in.	$5\frac{5}{8}$ in.	$f: 7$	61 50
8	5 x 7	$13\frac{3}{4}$ in.	$11\frac{3}{8}$ in.	7 in.	$f: 7$	73 50
9	5 x 8	$16\frac{1}{8}$ in.	$11\frac{3}{8}$ in.	$7\frac{1}{2}$ in.	$f: 7-7$	86 00
11	$6\frac{1}{2}$ x $8\frac{1}{2}$	$16\frac{1}{8}$ in.	$13\frac{3}{4}$ in.	$8\frac{1}{2}$ in.	$f: 7$	93 00
12	$6\frac{1}{2}$ x $8\frac{1}{2}$	$18\frac{7}{8}$ in.	$13\frac{3}{4}$ in.	$9\frac{1}{8}$ in.	$f: 7-7$	114 50
17	8 x 10	$23\frac{1}{8}$ in.	$18\frac{7}{8}$ in.	$11\frac{7}{8}$ in.	$f: 7$	169 00

B. & L.-ZEISS PROTAR LENS—SERIES V, $f: 18$

The B. & L.-Zeiss Protar, Series V, is designed for extreme wide-angle work. This lens embraces a field of 110 degrees.

No.	Size	Equivalent Focus	Price
1	$4\frac{1}{4}$ x $6\frac{1}{2}$	$3\frac{3}{8}$ in.	\$23.00
2	5 x 7	$4\frac{3}{8}$ in.	23.00
3	$6\frac{1}{2}$ x $8\frac{1}{2}$	$5\frac{9}{16}$ in.	29.00
4	8 x 10	$7\frac{1}{8}$ in.	36.00

SYMMETRICAL WIDE-ANGLE LENS

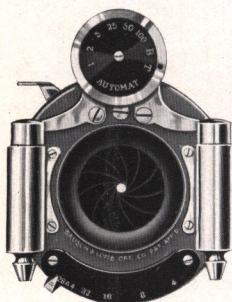
While not an anastigmat, this is an excellent wide-angle lens at a moderate price, having an angle of about 80 degrees.

No.	Size	Equivalent Focus	Price In Cells Only
1	4 x 5	$3\frac{1}{2}$ in.	\$ 5.00
2	5 x 7	5 in.	7.50
3	$6\frac{1}{2}$ x $8\frac{1}{2}$	$6\frac{1}{2}$ in.	12.00
4	8 x 10	8 in.	15.00

SHUTTERS FOR PREMOS

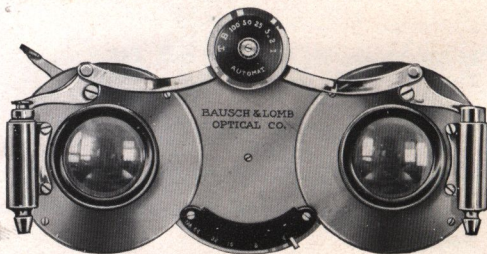
B. & L. AUTOMATIC SHUTTER

This shutter is automatic in action, working for time, bulb, instantaneous and retarded exposures without previous setting. The Automatic is operated by either bulb attachment or finger release. It is a very compact shutter and for exposures of 1, $\frac{1}{2}$, $\frac{1}{5}$, $\frac{1}{25}$, $\frac{1}{50}$, $\frac{1}{100}$ seconds, and works with great accuracy. An Iris diaphragm is also supplied and the stops are graduated according to the universal system. This shutter is regularly supplied with the Filmplate Premos and Pony Premos Nos. 3, 4, 6 and 7.



B. & L. STEREO AUTOMATIC SHUTTER

This shutter is in reality a double automatic, made up by a combination of two automatic shutters, both working in unison. It is constructed so as to readily accommodate any desirable Stereo lens. Supplied with all Stereo Premos.



SINGLE VALVE AUTOMATIC SHUTTER

This is a first rate automatic shutter, and while it does not have the retarded speeds of the double valve shutter, it is fully as reliable for time, bulb and instantaneous exposures. Regularly supplied with Premoette Nos. 1 and 1A Special, all Film Premos Nos. 1 and 3, Pony Premos Nos. 1 and 2, and Pocket Premo C.

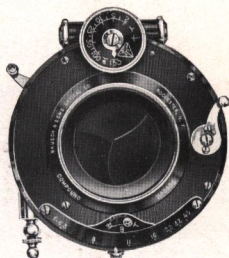


SHUTTERS FOR PREMOS

COMPOUND SHUTTER

The Compound Shutter is an automatic and setting shutter combined. Automatically, either time or bulb exposures may be made, while the shutter may be set for speeds of from one second to $\frac{1}{250}$ second.

The shutter leaves are formed of segments opening in star shape, giving even illumination over the entire plate the instant the exposure is started, and an Iris diaphragm is provided. Supplied as a special equipment with Premo cameras that take anastigmat lenses.



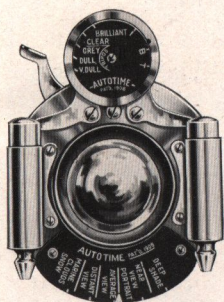
GRAFLEX FOCAL PLANE SHUTTER

To fit any reversible back Premo

Size	Price	Size	Price
4 x 5	\$22.00	6½ x 8½	\$27.00
5 x 7	24.00	8 x 10	31.00

KODAK AUTOTIME SCALE

The great majority of photographic failures are due to incorrect exposure—the uncertainty of just how shutter speed and diaphragm should be set for various subjects under various conditions of light.



For outdoor subjects, there is no such uncertainty when a shutter is equipped with the Autotime Scale. Under every possible outdoor light condition, the scale shows at a glance just where to set diaphragm and speed lever to get a perfectly timed exposure.

The scale is easily attached to any of our shutters excepting the Premoette. Merely remove regular scales and replace them with the Autotime. Specify shutter when ordering.

Price \$1.00

PREMO ACCESSORIES

PREMO FILM PACK ADAPTER

Will convert any Premo plate camera into a daylight loading film camera. See description, page 5.

$3\frac{1}{4} \times 4\frac{1}{4}$	\$1.00	4×5	\$1.50
$3\frac{1}{4} \times 5\frac{1}{2}$	1.50	5×7	2.50

PREMO PLATE HOLDER

Always the easiest of holders to load and unload, Premo holders are made absolutely light-tight by a fully patented light-lock. This device is shown in cut and is constructed of finely tempered non-corrosive metal with independently operating spring fingers overlaid with a closely woven specially prepared fabric. The fingers bring this fabric into such close and immediate contact with the shutter cover that a slide can be inserted cornerwise without admitting light to the plate.



Premo holders are always fitted with hard rubber slides.

$3\frac{1}{4} \times 4\frac{1}{4}$	\$1.00	5×7	\$1.25
$3\frac{1}{4} \times 5\frac{1}{2}$	1.00	$6\frac{1}{2} \times 8\frac{1}{2}$	1.75
4×5	1.00	8×10	2.00

UNIVERSAL PLATE HOLDER

These holders up to and including the 8×10 size are of the same pattern as Premo holders excepting that they are heavier in construction and made to fit the Empire State and Premo View Cameras. Sizes larger than 8×10 are made with bottom flap. Slides are pressboard unless otherwise specified.

5×7	\$1.00	11×14	\$4.00
$6\frac{1}{2} \times 8\frac{1}{2}$	1.10	14×17	5.00
8×10	1.25		

R. O. C. PLATE HOLDER

This holder is of good construction and is adapted for use in the R. O. C. View Camera only. It has pressboard slides.

5×7	\$1.00	$6\frac{1}{2} \times 8\frac{1}{2}$	\$1.10	8×10	\$1.25
------------------------	--------	--	--------	-------------------------	--------

PREMO ACCESSORIES

PREMO FILM PACKS

Twelve films in each package. See pages 4 and 5.

Size	Price	Size	Price
2¼ x 3¼	\$.40	3¼ x 5½	\$.80
2½ x 4¼50	4 x 590
3¼ x 4¼70	5 x 7	1.60

GLASS DRY PLATES

We furnish either Seed, Standard or Stanley dry plates at these prices:

Size	Price per Dozen	Size	Price per Dozen
3¼ x 4¼	\$.45	5 x 8	\$1.25
3¼ x 5½65	6½ x 8½	1.65
4 x 565	8 x 10	2.40
4¼ x 6½90	10 x 12	4.20
5 x 7	1.10	11 x 14	6.00

VELOX PAPER

The very best developing paper for amateur use.

Size	SINGLE WEIGHT			DOUBLE WEIGHT		
	Doz.	½ Gross	Gross	Doz.	½ Gross	Gross
2¼ x 3¼	\$.15	\$.60	\$1.00	\$.20	\$.75	\$1.25
2½ x 4¼15	.70	1.25	.20	.90	1.55
3½ x 3½15	.80	1.50	.20	1.00	1.90
3¼ x 4¼15	.80	1.50	.20	1.00	1.90
3¼ x 5½15	.80	1.50	.20	1.00	1.90
4 x 525	1.10	2.00	.30	1.40	2.50
4¼ x 6½30	1.65	2.80	.40	2.05	3.50
5 x 735	2.00	3.50	.45	2.50	4.40
Velox Post Cards20	1.10	2.00
Double Post Cards, 3½ x 11 inches40	2.20	4.00

CARD MOUNTS

BEVPLANE

Carbon Black and Scotch Gray

For Prints	Size	Outside	Per 50	Per 100
2¼ x 3¼	4	x 5	\$.30	\$.60
2½ x 4¼	4	¼ x 6	.40	.80
3¼ x 4¼	5	x 6	.45	.85
3¼ x 5½	4	¾ x 7	.45	.90
4 x 5	5	½ x 6½	.45	.90
5 x 7	7	x 9	.85	1.70

MARINE

London Brown and Ash Gray

For Prints	Size	Outside	Per 50	Per 100
2¼ x 3¼	4	¾ x 5¾	\$.50	\$.95
2½ x 4¼	4	½ x 6¼	.50	1.00
3¼ x 4¼	5	½ x 6½	.50	1.00
3¼ x 5½	5	¾ x 8	.70	1.35
4 x 5	6	x 7	.65	1.25
5 x 7	8	x 10	1.05	2.10

No orders accepted for less than fifty of one kind and size.

PREMO ACCESSORIES



A B C DEVELOPING AND PRINTING OUTFIT

The A B C Developing and Printing Outfit includes every requisite for developing, printing and finishing twenty-four 4 x 5, 2½ x 4¼, or 3¼ x 4¼ pictures. The outfit contains:

1 Kodak Candle Lamp, 25c.; 1 4 x 5 Printing Frame, 25c.; 1 4 x 5 Glass for Frame, 5c.; 1 4-ounce Graduate, 10c.; 1 Stirring Rod, 5c.; 4 4½ x 5½ Developing Trays, 40c.; 5 Tubes Eastman's Special Developer, 25c.; ½ pound Kodak Acid Fixing Powder, 15c.; 1 package Bromide Potassium, 5c.; 2 dozen 4 x 5 Velox Paper, 50c.; 2 ounces Nepera Solution, for developing Velox, 10c.; Instruction Book, 10c. These articles if purchased separately would cost \$2.25. Price, complete, neatly packed, \$1.50.

PREMO OPTICAL OUTFIT

This outfit consists of a set of supplementary lenses, ray filter and duplicator, and is for use with 4 x 5 and 5 x 7 cameras whose lens barrels do not exceed 1⅝ inches in diameter. They slip over the regular lenses of the camera and are enclosed in a plush lined case, leather covered.

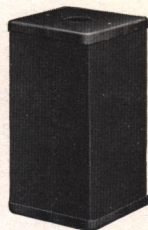
Outfit, complete for 4 x 5, diam. of lens 1⅝" . . .	\$6.00
Outfit, complete for 5 x 7, diam. of lens 1⅝" . . .	6.00
Enlarging and Copying lens	1.25
Wide-Angle lens	1.25
Tele-Photo lens	1.25
Portrait lens	1.25
Ray Filter	1.00
Duplicator40



PREMO ACCESSORIES

KODAK CANDLE LAMP

The Kodak Candle Lamp is of folding design and when not in use can be readily carried in the pocket. The top and bottom are made of metal, the sides of special fabric. It accommodates a large candle and illuminates from all sides, giving a strong, safe light for the dark room.



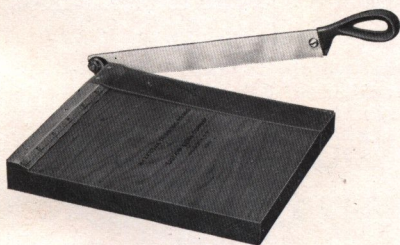
Kodak Candle Lamp \$.25
Candles, per dozen30

KODAK DARK ROOM LAMP

This is a very popular oil lamp and produces a clear, steady light, perfectly safe and efficient for the dark room. It has a combination orange and ruby glass which may be used singly or together. The broad wick is regulated from the outside and an adjustable shield prevents white light from escaping.

Price \$1.00

KODAK TRIMMING BOARD

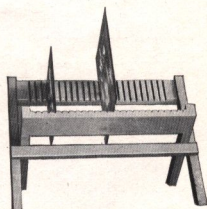


A thoroughly reliable trimming board at a moderate price, constructed of hard wood with natural finish. The blade is of the best steel and a rule is fitted to the board.

No. 1, 4x5 in. \$.40 No. 2, 7x7 in. \$.60

PREMO NEGATIVE RACK

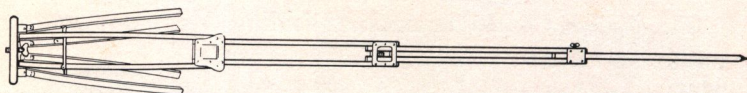
This is a very substantial article made of the best seasoned cherry, accommodating negatives of all sizes. It folds flat when not in use.



No. 1, for 12 negatives \$.20
No. 2, for 24 negatives25

PREMO ACCESSORIES

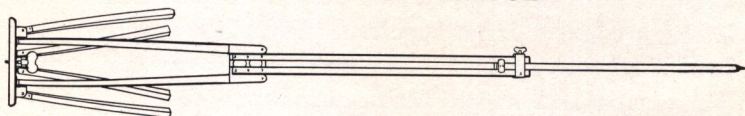
PREMO TRIPOD



Made of ash with Flemish oak finish and constructed in four sections. The length, when extended, varies according to size from fifty-six to fifty-eight inches; when folded, from sixteen and a half to seventeen and a half inches.

Style	Size of Camera	Weight	Price
No. 2 . . . 4	x 5 and 5 x 7	. 1 lb. 13 ozs. . .	\$5.00
No. 3 . . . 5	x 7 and 6½ x 8½	. 2 lbs. 13 ozs. . .	6.00
No. 4 . . . 6½	x 8½ and 8 x 10	. 4 lbs. 1 oz. . .	7.00

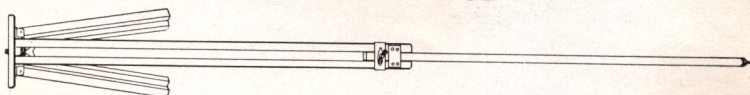
COMBINATION TRIPOD



This tripod is made on the sliding and folding principle. The wood parts are of ash and the finish is of the very best. Length, when extended, varies according to size from fifty-six to fifty-nine inches; folded, from twenty-two to twenty-three inches.

Style	Size of Camera	Weight	Price
No. 2½ . . . 6½	x 8½ and smaller . .	3 lbs. 2 ozs. . .	\$3.00
No. 3 . . . 8	x 10 and 10 x 12 . .	4 lbs. 3 ozs. . .	3.50
No. 4 . . . 11	x 14 and 14 x 17 . .	5 lbs.	4.50
No. 5 . . . 17	x 20 and 20 x 24 . .	7 lbs.	6.00

SLIDING TRIPOD

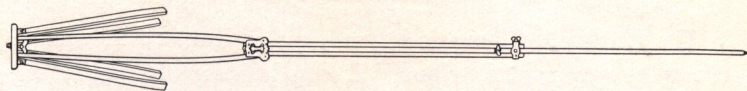


As a rigid tripod none will be found more satisfactory than the Sliding. The legs are made in two sections, producing a very firm support.

Style	Size of Camera	Weight	Price
No. 1	5 x 7 and smaller . . .	2 lbs.	\$2.00
No. 2	5 x 8 and 6½ x 8½ . . .	2 lbs. 8 ozs. . .	2.50
No. 3	8 x 10 and 10 x 12 . . .	4 lbs. 8 ozs. . .	3.00
No. 4	11 x 14 and 14 x 17 . . .	7 lbs. 3 ozs. . .	4.00

PREMO ACCESSORIES

R. O. C. TRIPOD



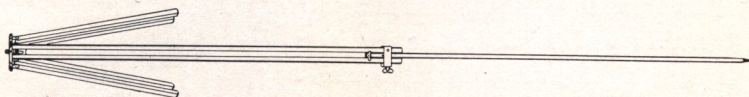
The R. O. C. Tripod is of the combination type. The wood parts are of maple, beautifully finished in natural color. The head is of metal with leather covered wooden top. A very desirable tripod for use with any camera up to and including the 5 x 7 size.

Weight, 32 ounces

Length, 22 to 57 inches

Price, \$1.70

RAY SLIDING TRIPOD



Although very light, this is an extremely rigid tripod, and is designed for cameras up to and including the 5 x 7 size.

Weight, 16 ounces

Length, 29 to 54 inches

Price, 80 cents

KODAK METAL TRIPOD

The strongest of all metal tripods. Made of nickeled brass tubing with revolving head. Upper section black enameled.

No. 1, 4 Sections

Length, 15 to 48½ inches

Price, \$2.50

No. 2, 5 Sections

Length, 13½ to 49½ inches

Price, 3.25

EASTMAN TRIPOD BRACE

An exceedingly simple device for holding the tripod legs in position when extended. Cannot collapse.

Eastman Tripod Brace Price, \$1.00

R. O. C. TRIPOD TRUCK

An excellent device for those who use a tripod indoors. Perfectly solid when extended, supplied with casters and folds compactly when not in use.

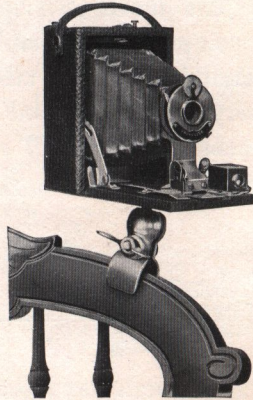
R. O. C Tripod Truck Price, \$1.00

PREMO ACCESSORIES

THE UNIVERSAL CLAMP

The Universal Clamp is a small, convenient article which takes the place of a tripod. It can be carried readily in the pocket, is very light, and may be attached to a chair, fence, the front board of an automobile, or other object which may be at hand. The screw of this clamp is made in the Universal pattern, so that it may be used with any modern hand camera.

The clamp jaws are padded with felt, obviating any danger of marring the surface of the article on which it is used; and the whole device is nickel-plated.



Price, 75 cents

PREMO RAY SCREEN



By the use of this screen a more equal exposure can be obtained of sky, clouds and landscape, thus bringing out the detail of subject without losing cloud effect.

Size	Outside Diam.	Diam. of Lens	Price
No. 1	1½ in.	1¼ in.	\$.40
No. 2	2 in.	1¾ in.50
No. 2½	2⅞ in.	2 in.60
No. 3	3¼ in.	2⅞ in.75

DEVELOPING TRAYS

Bulls-Eye Composition, 3½ x 4¼	\$.12
Bulls-Eye Composition, 4 x 515
Bulls-Eye Composition, 5 x 725
Paper, 4 x 510
Paper, 5 x 715
R. O. C. Hard Rubber, 4 x 555
R. O. C. Hard Rubber, 5 x 765

PREMO ACCESSORIES

PREMO CARRYING CASES

Cameras	3¼ x 4¼	3¼ x 5½	4 x 5	5 x 7	6½ x 8½
Film Premo No. 1, square . . .	\$1.25	\$1.50	\$1.50	\$2.25	. .
Film Premo No. 3, square . . .	1.25	1.50	1.50
Pocket Premo C, square . . .	1.50	1.75
Filmplate Premo, square . . .	1.75	2.00	2.00	2.50	. .
Pony Premos 1 and 2, long	1.50	2.00	. .
Pony Premos 3 and 4, long	4.00	5.00	. .
Pony Premo No. 6, long	5.00	6.00	\$ 8.00
Pony Premo No. 7, long	6.00	8.00	12.00
	2¼ x 3¼	2½ x 4¼	3¼ x 4¼	4 x 5	
Premo Junior Cases (imitation leather)	\$.75	\$.85	\$1.10	\$1.25	
Premoette Cases (imitation leather)	.75	.85	
Premoette Special Cases (sole leather)	1.00	1.25	
View Cameras	5 x 7	6½ x 8½	8 x 10	11 x 14	14 x 17
R. O. C. View, square	\$1.75	\$2.00	\$2.25
Empire State, long	2.00	2.25	2.50	\$3.25	\$5.00
Empire State No. 2, long	2.00	2.25	2.50
Premo View, long	4.00	5.00

HOLDER SLIDES

Extra slides for any of our holders will be supplied when desired, at following prices:

Size	Press-board	Price	Hard Rubber	Size	Press-board	Price	Hard Rubber
3¼ x 4¼ . . .	\$.10 . . .		\$.20	6½ x 8½ . . .	\$.25 . . .		\$.50
3¼ x 5½1525	8 x 103565
4 x 51525	11 x 1450
5 x 72035				

HOLDER KITS

These are intended for holding small plates in large plate holders, and are made of well seasoned material that will not warp.

Size Outside	Size of Opening for Plate	Price
4 x 5 . . . 3¼ x 4	3¼ x 4¼	\$.20
5 x 7 . . . 3¼ x 5½	3¼ x 4¼ 4 x 5 4¼ x 6½25
5 x 8	3¼ x 4¼ 4 x 525
6½ x 8½ . 3¼ x 4¼	4 x 5 4¼ x 6½ 5 x 730
8 x 10	5 x 7 6½ x 8½40
11 x 14	6½ x 8½ 8 x 10 10 x 1250
14 x 17	10 x 12 11 x 1480

MISCELLANEOUS

Bulbs and Tubes, No. 2 . . . \$.25	Printing Frame, 3¼ x 4¼ . . \$.25
Bulbs and Tubes, No. 335	Printing Frame, 3¼ x 5½ . . .25
Focus Cloth, Rubber50	Printing Frame, 4 x 5 . . .25
Photo Paste, 3 oz. tube . . .15	Printing Frame, 5 x 7 . . .35
Photo Paste, 5 oz. tube . . .25	Reversible Backs:
Thermometer50	For View Cameras, 5x7 . . 7.50
R. O. C. Tumbler Graduates,	For View Cameras, 6½
moulded, 2 ozs.10	x 8½9.00
Do, 4 ounces15	For View Cameras, 8 x 10 11.00
Do, 8 ounces20	For View Cameras, 11x14 14.00
Do, 16 ounces30	Screws for Tripod Head:
Print Roller, 2 x 6-inch rub-	Nos. 1, 2 and 325
ber roller, nicked frame . . .50	Nos. 4 and 540
Flexo Print Roller, 4-inch	Screws for Tripod Leg:
rubber roller, black enam-	Nos. 1, 2 and 315
eled frame15	Nos. 4 and 525
Ground Glass Frames for	Milled Head Screws for
View Cameras:	Cameras:
5 x 775	½ inch and smaller15
6½ x 8½1.00	Larger than ½ inch . . .25
8 x 101.25	Shoulder Straps, Black:
Ground Glass:	½ x 52 in. with Snaps and
4 x 515	Buckles25
5 x 720	5⁄8 x 52 in. with Snaps and
6½ x 8½25	Buckles30
8 x 1030	½ x 66 in. with Buckle . .30
Lens Boards:	5⁄8 x 74 in. with Buckle . .35
For Premos, up to 5 x 7 . .35	Tan Straps for View Cases,
For Premos, larger50	with Buckle. Specify style
For Stereo Cameras . . .50	and size of camera when
For View Cameras, up to	ordering.
8 x 1050	34, 40 and 44 in.25
For View Cameras, larger .70	52, 60 and 66 in.30
Premo View Finder1.50	Tubing per foot06
Premo Spirit Level40	

TERMS

Prices as listed in this catalogue are net excepting to dealers.

When ordering, give shipping directions, whether by freight, express or otherwise. If not stated we use our discretion.

All orders for shipment C. O. D. must be accompanied with sufficient remittance to cover transportation both ways.

Mail orders must be accompanied with remittance for full amount of purchase, including postage, or we will ship by express.

Under no circumstances are we responsible for loss of mail packages. We suggest for safety that all such packages be ordered registered.

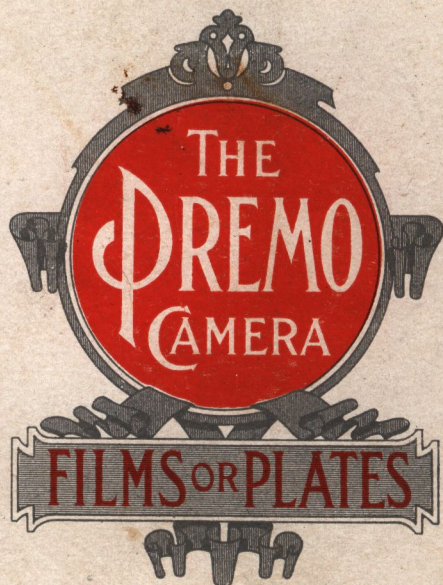
All goods are carefully packed and we cannot be held responsible for any damage during transit.

Orders for special parts or for goods not listed in this catalogue will be filled on customer's responsibility only. Under no circumstances can we permit the return of such goods for credit.

All prices are F. O. B. at Rochester, N. Y.

ROCHESTER OPTICAL DIVISION
EASTMAN KODAK CO. ROCHESTER, N. Y.

200
137
63
10
53



PORTLAND PHOTO SUPPLY CO.

149 THIRD STREET

PORTLAND, OREGON