

HOUGHTONS

LTD

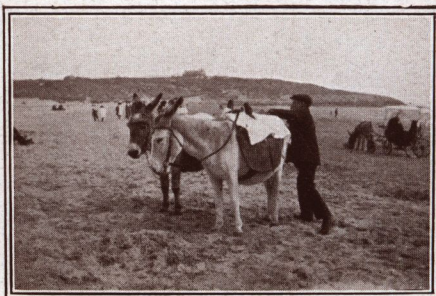
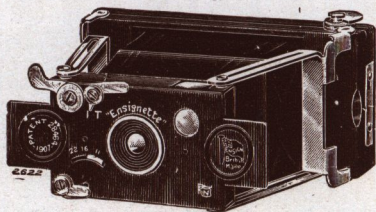


"ENSIGNETTE" Cameras for the Waistcoat Pocket.

For Roll Films.
Daylight Loading.
In Two Sizes.

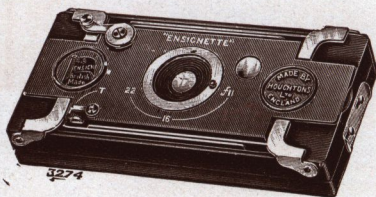
The clear, crisp negatives which it is possible to obtain from the "Ensignette" renders the carrying of a large camera unnecessary, except on special occasions.

Simplicity in use and excellence of results are responsible for the great reputation of the "Ensignette" cameras. Enlargements made from "Ensignette" negatives are often indistinguishable from contact prints obtained with much larger cameras.



*This picture has been taken with the No. 1
"Ensignette" (Guinea Mode).*

The new model (No. 2) recently introduced gives such a large picture (3×2 ins.) in comparison with the size of the camera that every photographer should make a point of examining it. The features which have made the original model the most universally used camera are all retained. The No. 2 "Ensignette" can be obtained fitted with fine Anastigmat lenses. Every photographer should see specimen prints taken with the new camera.



Write direct if your dealer cannot show them.

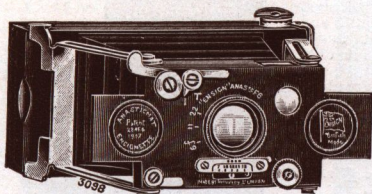
No 1. Ensignette (for pictures $2\frac{1}{4} \times 1\frac{1}{2}$ ins.) 21/-
No 2. Ensignette (for pictures 3×2 ins.) 31/6

Ensignette Film Spools, 6 exposures	each	No. 1	No. 2
Ensignette Film Spools	per box of 3	8d.	1/-
Ensignette Printing Box for making Bromide Post-cards .. each		2/-	3/-
Ensignette Developing Tank for Developing Ensignette Films in daylight	each	5/6	7/6
		7/6	12/6



"ENSIGNETTE" Camera.

ANASTIGMAT MODELS.



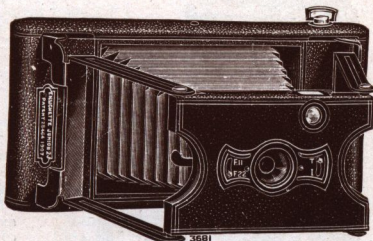
The ever-ready daylight loading "Ensignette" Camera when fitted with an Anastigmat Lens is the most valuable camera that an earnest amateur photographer can possess. Both models can be carried comfortably in the waistcoat pocket, and the magnificent optical qualities of the fine Anastigmats fitted make it possible to get beautifully crisp, brilliant little negatives.

Prices of Anastigmat Models with Focussing Adjustment.	No. 1 'Ensignette' for pictures 2½ x 1½ in.	No. 2 'Ensignette' for pictures 3 x 2 in.
With "Ensign" Anastigmat f/6	No. 1n. £3 3 0	No. 2n. £4 4 0
With "Aldis" Anastigmat f/6'8	No. 1d. 3 3 0	No. 2d. 4 4 0
With "Cooke" Anastigmat	No. 1b. 4 10 0	No. 2b. 6 0 0
With "Goerz" Anastigmat f/6'8	No. 1g. 5 5 0	—
With "Zeiss Tessar" Anastigmat	No. 1z. 6 10 0	No. 2z. 7 5 0

The "ENSIGNETTE JUNIOR No. 2J." (PATENT).

Just as simple as the Waist-coat Ensignettes, but takes bigger pictures.

The "ENSIGNETTE JUNIOR No. 2J," is really a most excellent camera for constant use and has all the simplicity of a box-form without its bulk. It is an ideal instrument for anyone who wants a low-priced small camera that can be tucked safely away out of sight in a pocket and yet brought into action directly the opportunity occurs.



The size of the picture taken is $2\frac{1}{4} \times 3\frac{1}{2}$ in., and the 7 exposure daylight loading spools cost 1/- each.

The Camera is well made of seasoned wood, with fine quality morocco grained leatherette covering and fitted with truncated black leather bellows, black enamelled fittings and a brilliant view finder. It is fitted with an Achromatic Meniscus Lens of fine quality and an everset time and instantaneous shutter of simple construction.

The negatives will enlarge well, and contact prints of suitable and effective size and enlarged post-cards can easily be produced.

"Ensignette Junior No. 2J." for taking pictures $2\frac{1}{4} \times 3\frac{1}{4}$ in. each **15/6**

"Ensignette Junior No. 2J." Spools, 7 exposures each	1/-
" " " " " " " "	per box of three	3/-

" " " " .. per box of three 3/-



New "FOLDING ENSIGN" Cameras.

THESE Cameras slip easily into the pocket and with their black polished Baseboard, black Bellows, black Shutter and covering are better looking and better finished than any Cameras that have ever been sold at such low prices.

The body with the baseboard is made of wood, the detachable panel back is of metal.

A very simple and ingenious Patent Focussing Lock is provided, setting the focus for 15 ft., 7 ft., 5 ft., or 3 ft., as may be required.

"2½ B Folding Ensign," with Achro- ℓ s. d.
matic Meniscus Lens and Ensign Junior-Auto Shutter for Roll Films, 2½ × 3½ in. . . . 1 1 0

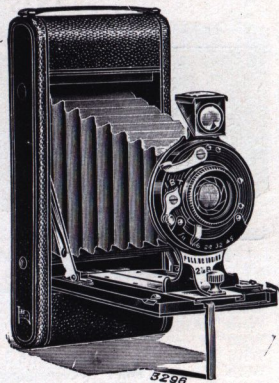
"2½ Folding Ensign," ditto for Roll Films, 2½ × 4½ in. . . . 1 10 0

"2½ RR Folding Ensign," with Rapid Rectilinear Lens and Ensign Simplex Shutter for Roll Films, 2½ × 4½ in. . . . 2 0 0

Larger Models (slightly different in pattern).

"3½ Folding Ensign," complete with Achromatic Meniscus Lens and Ensign Simplex Auto-Shutter for Roll Films, 3½ × 4½ in. . . . £1 17 6

"3½ RR Folding Ensign," complete with Rapid Rectilinear Lens and Ensign Simplex-Auto Shutter for Roll Films, 3½ × 4½ in. . . . 2 5 0



The "REGULAR ENSIGN" Cameras.

For Roll Films or Plates.

Very compact Folding Pocket Cameras of perfect design and workmanship for use with Daylight-Loading Roll Films or Plates.

The simplest form of the single-extension Roll Film Pocket Cameras of the more expensive type.

The Shutter fitted to the models given below (except the first, which has a "Junior-Auto") is the "Ensign Simplex-Auto" with three instantaneous speeds, 1/25th, 1/50th, 1/100th, as well as Time and Bulb exposures.

			4½ × 3½	5½ × 3½
No. JY, with	Rectimat Symmetrical Lens	£2 12 6	£3 7 6
No. AY, "	Rectimat Symmetrical Lens	2 17 6	3 12 6
No. AK, "	Ensign Anastigmat Lens, f/7.7	3 7 6	4 5 0
No. AN, "	Ensign Anastigmat Lens, f/6	3 17 6	4 17 6
No. AD, "	Aldis-Plano Anastigmat Lens, f/6.8	3 17 6	4 17 6
No. AS, "	Zeiss Triotar Anastigmat Lens, f/6.3	5 17 6	7 7 6



The "Flush - Back" Ensign Cameras

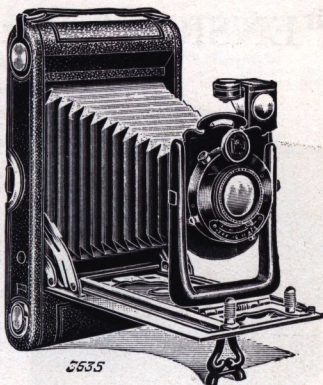
FOR ROLL FILMS ONLY.

FOLDING POCKET CAMERA, strongly constructed with extra long folding Blacked Aluminium Baseboard, and covered in finest quality Morocco Leather, with black leather bellows, Rising, Falling and Cross Fronts.

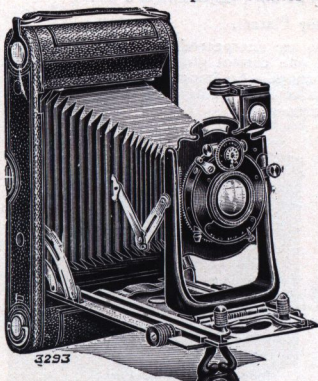
The new Stirrup-shaped Cast Aluminium Lens Front, in conjunction with the hinged sliding carriage, ensures absolute rigidity. The front is simply drawn forward when the camera is opened and fixes itself automatically at infinity.

WITH ENSIGN SIMPLEX
AUTO SHUTTER.

No. AY, with Rectimat Symmetrical Lens	..	$4\frac{1}{2} \times 3\frac{1}{2}$	£3 2 6	$5\frac{1}{2} \times 3\frac{1}{2}$	£3 17 6
No. AK, "Ensign" Anastigmat Lens, f/7.7	"		3 12 6	"	4 10 0
No. AD, "Aldis-Plano" Anastigmat Lens, f/6.8	"		4 2 6	"	5 2 6
No. AS, "Zeiss Triotar" Anastigmat Lens f/6.3	"		6 2 6	"	7 12 6
WITH ENSIGN SECTOR SHUTTER.					
No. SC, with Rapid Aplanat Lens, f/8	..	$4\frac{1}{2} \times 3\frac{1}{2}$	£3 10 0	$5\frac{1}{2} \times 3\frac{1}{2}$	£4 5 0
No. SK, "Ensign" Anastigmat Lens, f/7.7	..		3 17 6	..	4 17 6
No. SD, "Aldis-Plano" Anastigmat Lens, f/6.8	..		4 7 6	..	5 10 0
No. SL, "Cooke-Luxor" Anastigmat Lens, f/6.3	..		5 5 0	..	6 7 6
No. SS, "Zeiss Triotar" Anastigmat Lens, f/6.3	..		6 7 6	..	8 0 0
No. SZ, "Zeiss Tessar" Anastigmat Lens, f/6.3	..		8 2 6	..	9 5 0
Extra for Koilos or Compound Shutter	..		15/-		15/-



5635



4293

'Ensign de Luxe' Cameras.

These "Pocket Ensign de Luxe" models are the best cameras that can possibly be obtained of this type. Having a Double Extension, the back combination of the lens can be used alone in many cases. The Bellows Extenders come into action automatically when the extension is used. A special form of "Stirrup" front is fitted, and a very ingenious method of working the rising front.

"ENSIGN DE LUXE," complete for Roll Films, with "Ensign" Anastigmat Lens, Series VIIIn., $4\frac{1}{2}$ in., f/7.7 and "Ensign Sector" Shutter

$4\frac{1}{2} \times 3\frac{1}{2}$..	No. Sk	£5 5 0
$5\frac{1}{2} \times 3\frac{1}{2}$..	No. Sk	£6 5 0

$4\frac{1}{2} \times 3\frac{1}{2}$

$5\frac{1}{2} \times 3\frac{1}{2}$

Ditto, with "Ensign" Anastigmat Lens, f/6	No. St	£6 5 0	No. St	£7 7 6
Ditto, with "Cooke-Luxor" Anastigmat, f/6.8	No. SL	6 12 6	No. SL	7 15 0
Ditto, with "Zeiss Tessar" Lens, f/6.3	.. No. Sz	9 10 0	No. Sz	10 12 6



"ENSIGN" Box Form Cameras.

*The Daylight-Loading Roll Film
Camera in its Simplest Form.*



The Cameras are loaded in daylight with spools of Roll Film, containing material for six or a dozen pictures. This loading takes about a minute, and as it can be done anywhere no time is wasted when the Camera has to be re-charged. Roll Film Spools are obtainable everywhere, take up little space, and a supply can be carried in the coat pocket.

Although more bulky than the folding type of Roll Film Camera, the Box-Form Models are always ready for instant use and have the advantage of being very low in price, owing to the simplicity of their construction.

A fine quality Achromatic Meniscus Lens is fitted. The Shutter is Everset and gives Time and Instantaneous Exposures. Ground Glass View Finders, for upright and oblong pictures, and built

into the body of the Cameras, are provided, and each Camera is fitted with a leather carrying handle.

"2 $\frac{1}{4}$ A Ensign." Pictures, 2 $\frac{1}{4}$ × 2 $\frac{1}{4}$ 5/- | "2 $\frac{1}{2}$ Ensign." Pictures, 4 $\frac{1}{2}$ × 2 $\frac{1}{2}$ 12/6
"2 $\frac{1}{4}$ B Ensign." Pictures, 3 $\frac{1}{4}$ × 2 $\frac{1}{4}$ 10/- | "3 $\frac{1}{4}$ Ensign." Pictures, 3 $\frac{1}{4}$ × 4 $\frac{1}{4}$ 17/6

List on application.

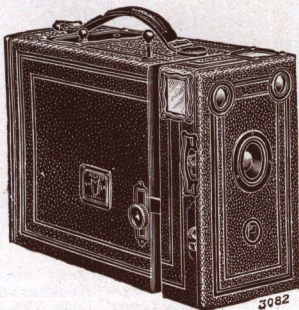
"KLITO" Hand Cameras.

Box Form (for Plates).

These reliable British-made Cameras are guaranteed to give good results. With the simple Everset shutter fitted one cannot go wrong, and the sunk shutter release prevents accidental exposures. An improved plate changer is supplied for the magazine. The lens is of fine quality and will give sharp pictures, bright and clear to the extreme corners.

	£	s.	d.
No. 000. Klito, for 6 Plates, 3 $\frac{1}{2}$ × 2 $\frac{1}{2}$	0	7	6
No. 00a. Klito, for 6 Plates, 4 $\frac{1}{4}$ × 3 $\frac{1}{4}$	0	10	6
No. 00b. Klito, for 12 Plates, 4 $\frac{1}{4}$ × 3 $\frac{1}{4}$	0	12	6
No. 0. With Rapid Rectilinear Lens, 3 Magnifiers for Portraits at 3 ft., 6 ft. and 9 ft. . .	1	1	0
No. 1. With Rapid Achromatic Lens, and Rack and Pinion Focussing, with Engraved Scale . . .	1	1	0

Other Magazine Klitos at prices varying from £1 5s. to £7 10s.



MASCOT CAMERAS.

(A Cheaper Line).

No. 1. For 6 Plates, 3 $\frac{1}{2}$ × 2 $\frac{1}{2}$..	5/6
No. 1a. For 6 Plates, 4 $\frac{1}{4}$ × 3 $\frac{1}{4}$..	7/6



"FOLDING KLITO" Cameras

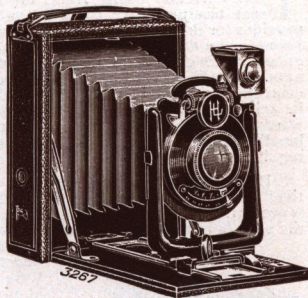
for Plates in Dark Slides, or Flat Films, Film Packs, etc.

A Camera of this type can be used on a stand for architecture, portraiture, still-life, copying and so on, or held in the hand for snapshot work. The design is marked by extreme compactness—the whole camera folding into the thickness of the body—and exceptional rigidity when extended.

Particular attention is drawn to the strong "stirrup" front, cast in one solid piece. The covering is of black leatherette, the bellows are of black leather. Rising Front movement fitted. Takes metal dark slides for single plates.

No. 000. "Folding Klito" with Rapid Achromatic Lens and one slide ($\frac{1}{2}$ -plate) 21/-

No. 000a. Model with Rectimat Lens, 25/-



This picture shows the 000k model.

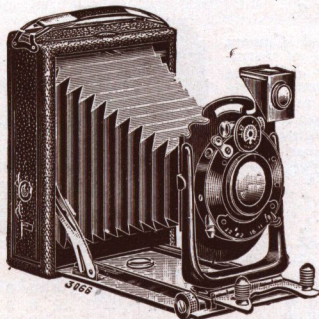
MODELS with ANASTIGMAT LENSES.

	£	s.	d.
No. 00k. with "Ensign" f/7.7 Lens and two slides ($\frac{1}{2}$ -plate)	2	2	0
No. 00n. with "Ensign" f/6 Lens and two slides	2	15	0
No. 00d. with "Aldis-Plano" f/6.8 Lens and two slides	2	15	0

Also made in Quarter-Plate Double Extension Models, 52/6 to £8 15s., and in Post-Card Size (Single and Double Extensions) 50/- to £10 2s. 6d.

"FOLDING KLITO" Cameras

for Plates in Dark Slides, or Flat Films, Film Packs, etc.



This illustrates the No. 4 Model.

The bodies of these Cameras are made of well-seasoned hardwood, and they are fitted with a blacked aluminium baseboard. A short rack and pinion is provided to facilitate focussing.

The exceptionally rigid cast 'stirrup' front is fitted to a hinged sliding carriage, which permits of the addition of a cross front as well as a rising front.

An "Ensign Sector" shutter is fitted on the No. 4 Models. Two slides are included in the price.

With Rectimat Symmetrical Lens	No. 3. £2 5 0	No. 4. £2 12 6
With Ensign Anastigmat Lens f/7.7	3k. 2 17 6	4k. 3 5 0
With Ensign Anastigmat Lens f/6	3n. 3 7 6	4n. 3 15 0
With Aldis-Plano Anastigmat Lens, f/6.8	3d. 3 7 0	4d. 3 15 0

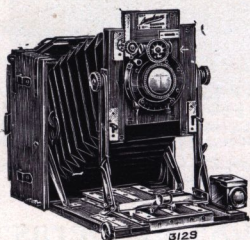


"Sanderson" Hand Cameras

REGULAR MODELS.

THE universal swing front, the movement that has made the "Sanderson" famous, provides for the rising and swinging of the Lens Front in any direction, and yet allows the action to be entirely governed by a single pair of locking nuts. All the actions of the "Sanderson" are controlled from the back. The Lens swings on its axis and travels upwards, forwards and backwards, on a pair of struts slotted in their full length. The action is always steady, smooth and regular.

It is not workmanship alone that has made the "Sanderson" the success it is. No camera is protected by so many patents, and the utility of the camera is dependent upon these various protected movements working in conjunction with one another. The swing movement would be of little use if the front could not be locked readily at any point, and the extreme rise would be of little use without the patented body and the method of preventing cutting off.



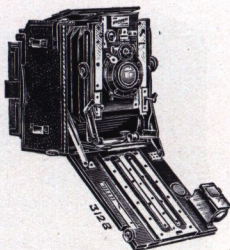
protected movements working in conjunction with one another. The swing movement would be of little use if the front could not be locked readily at any point, and the extreme rise would be of little use without the patented body and the method of preventing cutting off.

SPECIAL "TROPICAL" MODELS.

The Tropical Model is made of teak and can be submitted to great extremes of heat and cold. Every joint dowelled with brass. No Leather Covering. It is the one camera above all others that should be specified for exploration or frontier work.

"DE LUXE" MODELS.

The "Sanderson de Luxe" Hand Camera has been introduced for those requiring an instrument of the most perfect finish and quality of workmanship it is possible to produce. The woodwork is of well-matured Spanish mahogany, specially selected for its soundness, richness of colour and fine figuring. The cabinet work is faultless and the covering of the finest black morocco leather.



PRICES OF SANDERSONS.

No. 1K. Camera, complete with "Ensign" Anastigmat Lens, Series VII.N, F/7.7, "Ensign Sector" Shutter, Finder, Level and 3 Double Plate Holders.

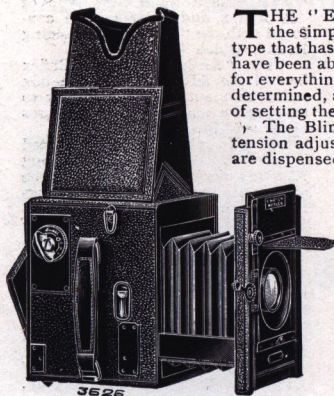
Model.	$4\frac{1}{2} \times 3\frac{1}{4}$	5×4	$5\frac{1}{2} \times 3\frac{1}{4}$ (Post-Card)	$6\frac{1}{2} \times 4\frac{3}{4}$
"REGULAR" ..	£6 10 0	£7 10 0	£8 2 6	£10 10 0
"TROPICAL" ..	7 15 0	9 0 0	9 12 6	12 0 0
"DE LUXE" ..	10 0 0	11 10 0	—	18 0 0

Also made with "Zeiss," "Cooke," "Goerz," "Dallmeyer," "Aldis," "Ross," and other fine Anastigmats.

A Complete Catalogue of Sanderson Cameras will be sent free to anyone who applies for it.



The "ENSIGN" Box - Form Reflex Camera.



THE "Ensign" Box-form Reflex is fitted with the simplest and best shutter of the focal-plane type that has ever been invented. All complications have been abolished. There is only one movement for everything. The shutter is wound, the exposure determined, and the slit altered by the mere action of setting the pointer.

The Blind is self-capping, and all complicated tension adjustments and other cumbersome fittings are dispensed with.

There is no possibility of giving Time or Bulb exposures when "Instantaneous" is intended. The range of exposures is perfect. The slowest Instantaneous Exposure is $\frac{1}{15}$ th of a second; the highest is $\frac{1}{1000}$ th. Here is a full list of approximate speeds:— $\frac{1}{15}$ th, $\frac{1}{25}$ th, $\frac{1}{40}$ th, $\frac{1}{50}$ th, $\frac{1}{75}$ th, $\frac{1}{100}$ th, $\frac{1}{150}$ th, $\frac{1}{250}$ th, $\frac{1}{500}$ th, $\frac{1}{1000}$ th, Bulb, Time. These speeds are all indicated on the plate of the Key Wind; no reference to a speed table necessary.

There are ever so many other features, such as a revolving back, reversing focussing hood, sunk lens cone, rising and falling front, sky shade, and so on, but we want you to see this camera, or write to us if you are thinking about getting a Reflex, so that you can learn all the good points yourself.

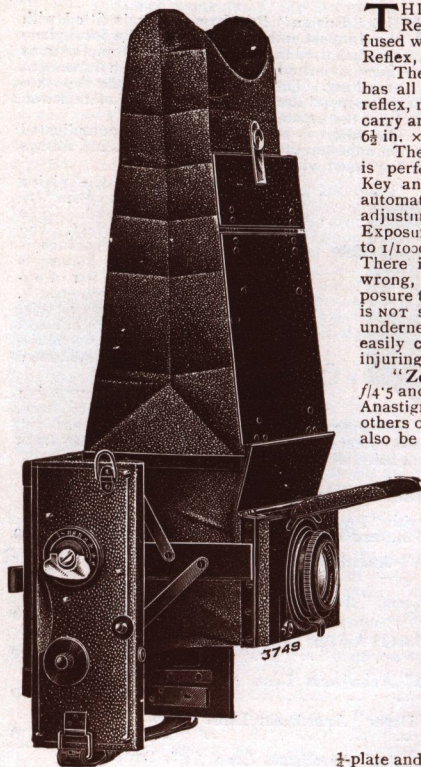
Prices of the Quarter-Plate Model ($4\frac{1}{4} \times 3\frac{1}{2}$ in.)

No. 4w.	Camera, complete with "Ensign" Anastigmat Lens, $f/5.5$, Series V., No. 1, 6 in., and Three Double Plate Holders	£14 0 0
No. 4x.	Ditto, with "Ensign" Anastigmat Lens, $f/4.5$, Series IV., No. 1, 6 in., ditto	15 10 0
No. 4z.	Ditto, with "Zeiss Tessar" Anastigmat Lens, $f/4.5$, Series Ic., No. 15, 6 in., ditto	17 0 0
No. 4c.	Ditto, with "Zeiss Double Amatar" Anastigmat Lens, $f/4.5$, Series IX., No. 5, 6 in., ditto	16 0 0
No. 4p.	Ditto, with "Cooke" Anastigmat Lens, $f/4.5$, Series II., $5\frac{1}{2}$ in., ditto	16 5 0
No. 4h.	Ditto, with "Goerz Dagor" Anastigmat Lens, Series III., No. 1, 6 in., ditto	16 15 0
No. 4v.	Ditto, with "Goerz Celor" Anastigmat Lens, $f/4.8$, Series Ib., No. 1, 6 in., ditto	17 0 0
No. 4q.	Ditto, with "Dallmeyer" Stigmatic Lens, $f/6$, Series III., No. 3, $6\frac{1}{4}$ in.	17 5 0
	Camera and Three Double Plate Holders, without Lens	10 10 0
Also supplied in the following sizes:— $3\frac{1}{2} \times 2\frac{1}{2}$ ins., 9×12 cm., 5×4 ins., $5\frac{1}{2} \times 3\frac{1}{2}$ ins., and $6\frac{1}{2} \times 4\frac{1}{2}$ ins.		

Complete List free on application.



"ENSIGN" Folding Reflex. New Type. Model D.



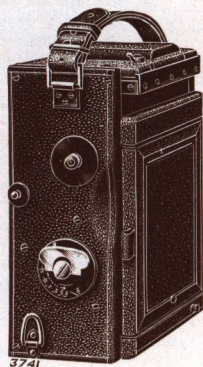
THIS is a quite new type of Refl-x and must not be confused with the "Houghton" Folding Reflex, which it supersedes.

The "Ensign" Folding Reflex has all the advantages of the box reflex, minus its bulk. It is easy to carry and when closed only measures $6\frac{1}{2}$ in. \times $6\frac{1}{2}$ in. \times 3 in.

The Focal-Plane Shutter fitted is perfect. With the new Setting Key any desired exposure can be automatically repeated, without readjustment of the speed disc. Exposures of Bulb, Time and $1/10$ th to $1/1000$ th of a second can be given. There is no tension spring to go wrong, nor is reference to an exposure tablet necessary. The Mirror is not silvered on the surface, but underneath. It can therefore be easily cleaned without any risk of injuring the surface.

"Zeiss Tessar" $f/4.5$, "Ensign" $f/4.5$ and "Cooke" Series II., 5 in., Anastigmat Lenses are fitted, and others of a suitable focus (5 in.) can also be used.

The appearance and workmanship of the camera are excellent, and altogether it is a fine example of recent British camera construction.

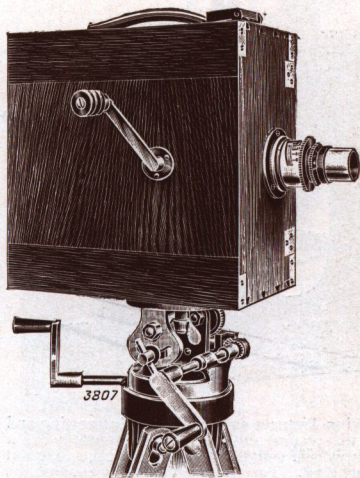


$\frac{1}{2}$ -plate and
9 \times 12 cm.

- | | |
|--|---------|
| No. 4w. Camera complete with "Ensign" Anastigmat Lens, $f/5.5$, Series V., No. 1a, $5\frac{1}{2}$ in., in Focussing Mount, and Three Double Plate-Holders ... | £18 5 0 |
| No. 4z. Ditto, with "Zeiss Tessar" Anastigmat Lens, $f/4.5$, Series Ic., No. 1a, $5\frac{1}{2}$ in., in Focussing Mount, ditto | 21 5 0 |
| No. 4p. Ditto, with "Cooke" Anastigmat Lens, Series II., 5 in., in Focussing Mount, ditto | 21 5 0 |



The "ENSIGN" Daylight Loading Cinematograph Camera.



THIS camera brings within the reach of everyone the possibility of making moving pictures. It does not need experience to operate it. Every movement is simple and easily understood. The "Ensign" Cinematograph Camera is loaded in daylight, just like an ordinary Roll Film Camera. No dark-room whatever is necessary. The exposed film is developed free of charge by the manufacturers and positives can be supplied at a low inclusive price.

Any amateur can take a real live picture of some local event, such as a football match, a procession, a sports meeting, or the numerous happenings of public and individual interest, and then show them to his circle of friends, or he may (if the subject warrants it) dispose of the film to the picture palace proprietors. The topical film always commands attention and interest.

The "Ensign" Cinematograph Camera takes the standard size film. The Lens is a "Zeiss Tessar" Anastigmat, $f/3.5$, so

that exposures can be made all the year round. From the insertion of the spool till it is wound off after exposure, ready for sending to the factory for the development, there is not the least difficulty.

The well illustrated and fully descriptive booklet should be obtained by everyone interested.

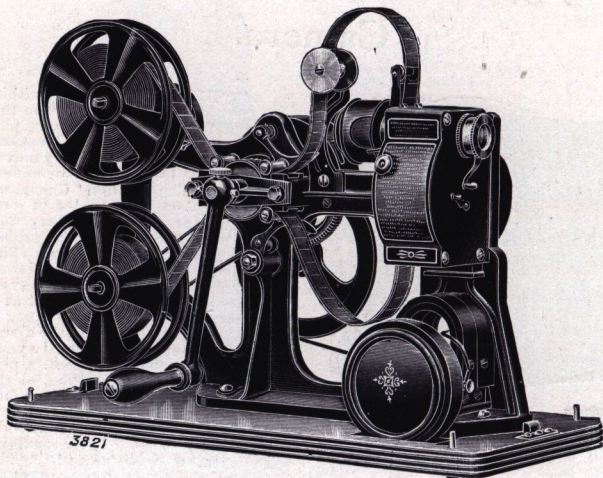
"Ensign" Daylight Loading Cinematograph Camera, with $f/3.5$		
"Zeiss Tessar" Anastigmat Lens, complete but without Indicator		£11 10 0
Ditto,	ditto, with Indicator	12 5 0
(Tripod Extra.)		

Daylight Loading Spools, including cost of development, 25 feet, each	0 5 0
50 feet, "	0 9 6
75 feet, "	0 13 6
100 feet, "	0 17 6

"Ensign" Home Projector with self-contained Electric Lighting System. The finest and most perfect home projector obtainable Complete.. .. .	13 13 0
---	---------



PATHÉSCOPE. The Home Cinematograph.



EVERYONE can now have moving Pictures at home just as interesting and as good as those shown in the picture theatres. The Pathéscope is a simple little instrument, entirely self-contained. There are no external connections to make, no wiring of any kind. Turning the handle for moving the picture also produces the necessary light. When you stop turning the handle the light goes out. A child can work it. The films are non-inflammable, and absolutely safe. It is as simple, and about the same size as a sewing machine. In a couple of minutes it can be made ready for use.

You can have a first-class moving picture entertainment in your own home without a bit of trouble. The different films can be projected as brightly and brilliantly as you would see them in a picture theatre. You also have the advantage of being able to choose your own subjects, from the large selection of films comprised in the Pathé list. Films can be changed in the same way as library books so that constant variety is ensured.

A moderate subscription enables one to have a complete two hours' entertainment which can be changed twice weekly.

At Clubs, Schools, Lectures and the like, the Pathéscope will always provide a highly interesting evening's entertainment.

A fully illustrated and descriptive book, together with list of film subjects, will be sent free on application.

PATHÉSCOPE Outfit, complete with projector, lens, condenser, electric lamp, screen (31 x 23 in.), cleaning outfit and metal cover, but without film, ready for immediate use £12 12 0



"Ensign"

Roll Films.

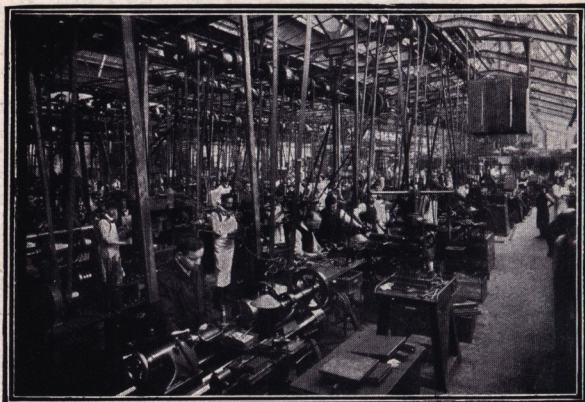
THE speed of the "Ensign" Roll Film is one of the good points that every user quickly finds out for himself. From practically every reasonable exposure made with "Ensigns," clean cut negatives are obtained which yield rich prints, crisp and clear. Sunny days cannot always be had, but, even in dull weather, good pleasing results can be got with the "Ensign" Film.



"Ensigns" have a world-wide reputation, and no matter how difficult the subject, the scale of an "Ensign" negative is always true. Test them for yourself and you will be surprised at the fine pictorial quality of your prints. To the amateur priding himself on the quality of his results, "Ensigns" soon become indispensable.

"Ensign" Roll Films are made by Austin Edwards, Ltd., at Warwick, in England, and they fit every camera built to take roll films.





One of the Metal Shops at the Ensign Works.

THE ENSIGN WORKS of Houghtons Ltd., at Walthamstow, employ over 1,000 workers and the buildings cover 3 acres. As the largest house in the trade, we are in a position to offer unequalled facilities to really big buyers of Photographic Goods. This big price list sent free on receipt of postal order for 3/-. All goods listed can be obtained from Photographic Dealers everywhere.

HOUGHTONS LTD.

The Largest Manufacturers of Cameras and Photographic Apparatus in Great Britain.

88/89, High Holborn, LONDON.

And at 70/78 York Street, GLASGOW.

Australasia: Harringtons Ltd., Sydney, Melbourne, Brisbane, Adelaide, etc.

Canada: United Photographic Stores, Montreal, Ottawa, Quebec, Toronto, Vancouver, etc.

India: Houghtons (India) Ltd., 6, Government Place, Calcutta.

U.S.A.: G. Gennett, 24/26, East 13th Street, NEW YORK.

New Zealand: Messrs. Harringtons (N.Z.) Ltd., AUCKLAND and WELLINGTON.

Germany: Messrs. A. E. Hubsch & Co., Ltd., Friedrichstrasse 235, BERLIN.

Russia: The Anglo-Russian Photo Co., Ltd. Miasnitzkaja No. 24, Moscow.

