



KODAK

Kodak

CATALOGUE

1921

KODAK LIMITED

Kingsway, LONDON, W.C.2

London :

115 Oxford St., W.1

40 Strand, W.C.2

60 Cheapside, E.C.2

184-186 Regent St., W.1

59 Brompton Rd., S.W.3

1-2 Gracechurch St., E.C.3

Liverpool :

45 Church St.

Birmingham :

45 Corporation St.

Newcastle-on-Tyne :

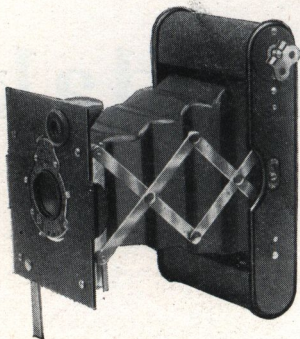
34 Grainger St.

Glasgow :

36-40 West Nile St.

Dublin : 89 Grafton St.

Vest Pocket *Autographic* Kodak



FROM its autographic feature down to the last detail, this little Kodak is built like a watch. Although it is so small as to slip easily into the vest pocket, it is just as practical as the larger cameras, and it will make just as good pictures.

The regular model is fitted with meniscus achromatic (single) lens, or Rapid Rectilinear (double) lens, and produces excellent pictures under all ordinary conditions. The

Kodak Ball Bearing shutter has speeds of $\frac{1}{25}$ and $\frac{1}{50}$ of a second, and can also be employed for Time and Brief Time exposures.

The *Special* model offers the same high quality of workmanship and finish, but in addition has a covering of finest quality pin grain Morocco. It is only supplied fitted with an Anastigmat lens, the best type of lens made.

For pictures $2\frac{5}{8} \times 1\frac{1}{2}$ in.

Capacity, 8 exposures without reloading.

Size of Kodak, $1 \times 2\frac{3}{8} \times 4\frac{3}{4}$ in. Weight, 9 ounces.

Lens, meniscus achromatic or Rapid Rectilinear.

Special, Kodak Anastigmat, *f.* 7.7, $3\frac{1}{2}$ in. focus ;
Kodak Anastigmat, *f.* 6.9, $3\frac{1}{2}$ in. focus ; or
T.T.H.-Kodak Anastigmat *f.* 6.5, $3\frac{1}{2}$ in. focus.

Shutter, Kodak Ball Bearing No. 0.

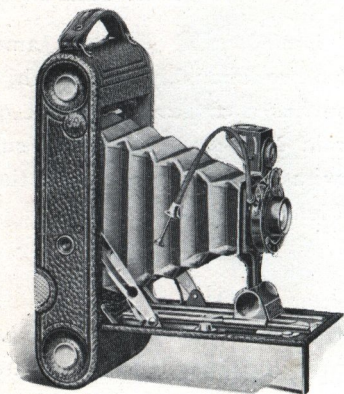
Brilliant reversible finder.

All metal body, frostine finish. *Special*, covered with pin grain Morocco.

Nickel and black enamel finish ; black leather bellows.

Takes Kodak Autographic Film.

Nos. 1 and 1A
Autographic Kodaks Junior



SO thin and compact as to slip into the pocket without inconvenience, the Juniors are reliable cameras of high efficiency, and their ease of operation commends them to the work of the amateur.

Both cameras are fitted with the Kodak Ball Bearing shutter; the No. 1 with speeds of $\frac{1}{25}$ and $\frac{1}{50}$ of a second, except

when supplied with *f.* 7.7 lens, in which case it has speeds of $\frac{1}{25}$, $\frac{1}{50}$ and $\frac{1}{100}$, the same as the No. 1A. The No. 1 makes pictures $3\frac{1}{4} \times 2\frac{1}{4}$ in. and the No. 1A, $4\frac{1}{4} \times 2\frac{1}{2}$ in. pictures. Both are provided with collapsible, reversible finders, and two tripod sockets, and covered with grain leather; metal parts nickel and black enamel. For those who desire them, these cameras will be supplied with a fixed focus.

No. 1

For pictures $3\frac{1}{4} \times 2\frac{1}{4}$ in.

Capacity, 6 exposures without reloading.

Size of Kodak, $1\frac{7}{16} \times 3\frac{5}{8} \times 6\frac{5}{8}$ in. Weight, 23 oz.

Takes Kodak Film.

No. 1A

For pictures $4\frac{1}{4} \times 2\frac{1}{2}$ in.

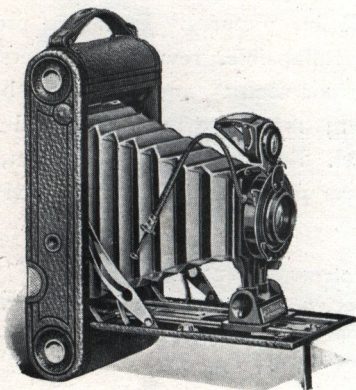
Capacity, 12 exposures without reloading.

Size of Kodak, $1\frac{5}{8} \times 3\frac{3}{4} \times 8$ in. Weight, 28 oz.

Takes Kodak Autographic Film.

The Fixed Focus models are only fitted with Single (Meniscus Achromatic) lenses. The Focusing models are equipped with either a Single or a Rapid Rectilinear lens, or with the Kodak Anastigmat *f.* 7.7.

Nos. 2C and 3A
Autographic Kodaks Junior



THE Nos. 2C and 3A Juniors have the same general characteristics as the Nos. 1 and 1A Juniors, except in the size of the pictures they make. They have the same thin, compact form and reliable equipment, but they are supplied only as focusing cameras.

These Kodaks load in daylight with ten or six exposure Autographic Film Cartridges, by means of which you can record on the negative the date and title, or any data that you may desire. They are regularly supplied with single (meniscus achromatic) lens, or a Rapid Rectilinear, or Kodak Anastigmat, *f.* 7.7.

The shutter is, in each case, the Kodak Ball Bearing with cable release, working at speeds of $\frac{1}{25}$, $\frac{1}{50}$ and $\frac{1}{100}$ of a second, also for Brief Time and Time exposures. These Kodaks have brilliant reversible collapsible finder. Two tripod sockets. Black leather bellows.

No. 2 C

For pictures, $4\frac{7}{8} \times 2\frac{7}{8}$ in.

Capacity, 10 exposures without reloading.

Size of Kodak, $1\frac{3}{4} \times 4\frac{3}{8} \times 8\frac{3}{4}$ in. Weight, 33 oz.

Takes Kodak Autographic Film.

No. 3 A

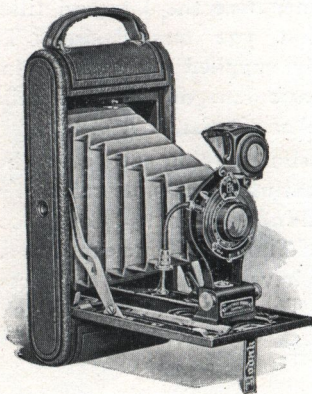
For pictures, $5\frac{1}{2} \times 3\frac{1}{4}$ in.

Capacity, 10 exposures without reloading,

Size of Kodak, $1\frac{1}{8} \times 5\frac{1}{8} \times 9\frac{3}{4}$ in. Weight, 35 oz.

Takes Kodak Autographic Film.

No 1A *Autographic* Kodak



THIS is a thin, compact Kodak in the 1A size, offering every photographic advantage that could be desired by the most exacting amateur.

The No. 1A makes $4\frac{1}{4} \times 2\frac{1}{2}$ in. pictures, a shape that is widely adaptable to either

horizontal or vertical composition. It has the autographic feature for the recording of data on the film, and loads in daylight with twelve and six exposure Autographic Film Cartridges.

Although regularly fitted with the best quality Rapid Rectilinear lens, it can also be supplied, if desired, with Kodak Anastigmat lens, *f.* 7.7, giving the advantages of a fine anastigmat equipment at a low price. The shutter is the Kodak Ball Bearing, with cable release, working at speeds of $\frac{1}{25}$, $\frac{1}{50}$ and $\frac{1}{100}$ of a second, and Time and Brief Time exposures.

For pictures $4\frac{1}{4} \times 2\frac{1}{2}$ in.

Capacity, 12 exposures without reloading.

Size of Kodak, $1\frac{5}{8} \times 3\frac{3}{4} \times 8$ in. Weight, $27\frac{1}{2}$ oz.

Lens, double combination, Rapid Rectilinear, $5\frac{1}{4}$ in. focus, or Kodak Anastigmat lens, *f.* 7.7, $5\frac{1}{4}$ in. focus.

Shutter, Kodak Ball Bearing with cable release.

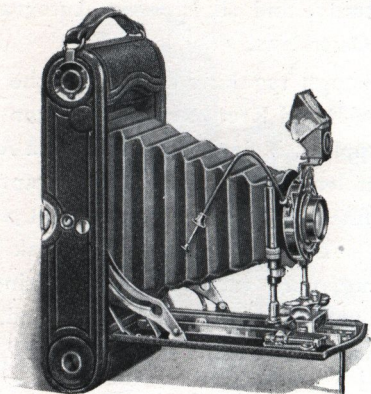
Automatic focussing lock.

Two tripod sockets.

Brilliant, collapsible, reversible finder.

Black leather bellows.

Nos. 3 and 3A
Autographic Kodaks



THESE Kodaks embody every improvement — including the autographic feature—that is essential to every day amateur requirements.

Both cameras are regularly fitted with the best Rapid Rectilinear lenses, and if desired will be supplied with Kodak

Anastigmat *f.* 7.7 lenses, offering the advantages of perfect definition and flatness of field; they have Kodak Ball Bearing shutters with cable release, and rising and sliding fronts; the body and base are made of aluminium, and are covered with the best seal grain leather, while the metal fittings are finely nickelled.

Both cameras have two tripod sockets, black leather bellows, brilliant reversible finders with hoods, and automatic focussing locks. These Kodaks can be supplied with double focussing scales for films or plates.

No. 3

For pictures $4\frac{1}{4} \times 3\frac{1}{4}$ in.

Capacity, 12 exposures without reloading.

Size of Kodak, $1\frac{3}{4} \times 4\frac{1}{2} \times 7\frac{1}{2}$ in. Weight, 23 oz.

Takes Kodak Autographic Film.

No. 3A

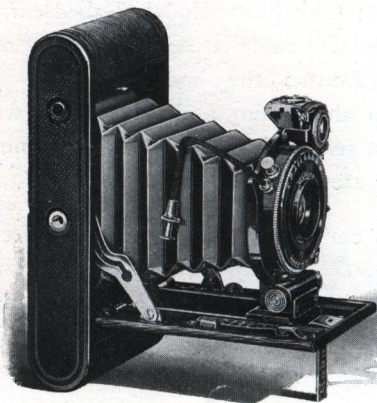
For pictures $5\frac{1}{2} \times 3\frac{1}{2}$ in.

Capacity, 10 exposures without reloading.

Size of Kodak, $2 \times 4\frac{3}{4} \times 9\frac{1}{2}$ in. Weight, 41 oz.

Takes Kodak Autographic Film.

No. 1 *Autographic* Kodak Special



HERE is a camera in which quality and speed are ingeniously combined. It is as small as is consistent with the utmost in lens and shutter efficiency.

Its lenses have sufficient length of focus to give the desirable perspective, and at the same time to utilize the full speed at which they are listed.

The shutter is large enough and fast enough to work in harmony with its high-speed lenses.

The regular equipment is the Kodak Anastigmat lens, *f.* 6.3 and Velosto shutter, with cable release, highest speed $\frac{1}{300}$ of a second. This Special Kodak can also be supplied with a Cooke Anastigmat or a Ross Homocentric lens.

The camera is beautifully finished throughout and covered with the finest quality long grain calf; the metal parts are in nickel and black enamel.

For pictures $3\frac{1}{4} \times 2\frac{1}{4}$ in.

Capacity, 6 exposures without reloading.

Size of Kodak, $1\frac{3}{8} \times 3\frac{3}{8} \times 6\frac{5}{8}$ in. Weight, $26\frac{1}{2}$ oz.

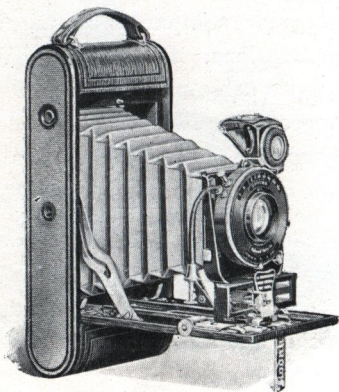
Lens, Kodak Anastigmat, *f.* 6.3, $4\frac{1}{4}$ in. focus
Cooke Anastigmat, *f.* 6.5, $4\frac{3}{4}$ in. focus, or Ross
Homocentric lens, *f.* 6.3, $4\frac{1}{4}$ in. focus.

Shutter, Velosto with cable release.

New, brilliant, reversible, collapsible finder.

Two tripod sockets and new lever focussing device.

No. 1A *Autographic* Kodak Special



FOR a camera in the $4\frac{1}{4} \times 2\frac{1}{2}$ size, the No. 1A *Special* represents the maximum in efficiency, beauty of design, finish, speed and accuracy in hand cameras. The high speed shutter is perfectly adapted for use with the high speed Anastigmat lens. The Kodak is constructed of the best

materials throughout, and it is covered with the finest long grain calf.

In addition to the important autographic feature there is the Kodak Range Finder permitting accurate focussing—simply, quickly and efficiently, without the necessity of estimating distances. The lens regularly supplied is the Kodak Anastigmat *f.* 6.3, and the shutter is the Velosto with eight variable speeds, from $\frac{1}{300}$ of a second down to Brief Time and Time exposures. This Special Kodak can also be obtained fitted with the Ross Homocentric lens.

For pictures $4\frac{1}{4} \times 2\frac{1}{2}$ in.

Capacity, 12 exposures without reloading.

Size of Kodak, $1\frac{5}{8} \times 3\frac{3}{4} \times 8$ in. Weight 32 oz.

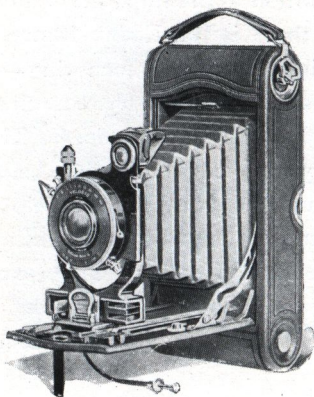
Lens, Kodak Anastigmat *f.* 6.3, 5 in. focus, or Ross Homocentric lens *f.* 6.3, 5 in. focus.

Shutter, Velosto. Two tripod sockets.

Brilliant, reversible, collapsible finder with adjustable mask.

Rack and pinion for focussing.

Nos. 3 and 3A
Autographic Kodaks Special



EVERY improvement that can possibly contribute to greater efficiency is incorporated in the *Specials*. In finish, in optical and mechanical devices, they have maintained a decided leadership.

The No. 3A *Special* with its autographic feature and Kodak Range Finder is with-

out a peer in hand cameras. But above all, this camera is optically efficient, offering a choice of the Kodak Anastigmat, *f.* 6.3 and other high-grade lenses. The No. 3 is not fitted with Range Finder but both these *Specials* have Velosto shutters, highest speed $\frac{1}{300}$ of a second. Both models have a rack and pinion for focussing and two tripod sockets.

No. 3

For pictures $4\frac{1}{4} \times 3\frac{1}{4}$ in.

Capacity, 12 exposures without reloading.

Size of Kodak, $1\frac{7}{8} \times 4\frac{1}{2} \times 8$ in. Weight, 32 oz.

Lens, Kodak Anastigmat *f.* 6.3, 5 in. focus, or Cooke Anastigmat *f.* 6.5, 5 in. focus or Ross Homocentric *f.* 6.3, 5 in. focus.

View Finder, brilliant, reversible with hood and spirit level.

Takes Kodak Autographic Film.

No. 3A

For pictures $5\frac{1}{2} \times 3\frac{1}{4}$ in.

Capacity, 10 exposures without reloading.

Size of Kodak, $2 \times 4\frac{3}{4} \times 9\frac{1}{2}$ in. Weight 42 oz.

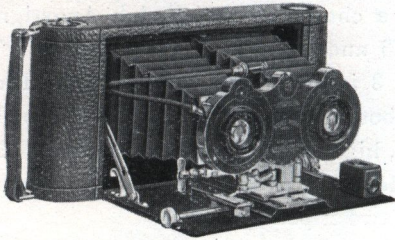
Lens, Kodak Anastigmat *f.* 6.3, $6\frac{3}{4}$ in. focus, or Ross Homocentric *f.* 6.3, $6\frac{1}{2}$ in. focus.

Kodak Range Finder.

View Finder, brilliant, reversible, collapsible with adjustable windows.

Takes Kodak Autographic Film.

Stereo Kodak



THERE is probably no branch of photography more fascinating than that afforded by the Stereo. Pictures which give the full effect of depth, roundness, distance and perspective can be obtained only by the use of twin lenses, and when viewed through the stereoscope, give the correct visual effect, just as we see with our eyes.

For standard Stereo size pictures $3\frac{1}{8} \times 3\frac{3}{16}$ in.

Capacity, 6 exposures without reloading.

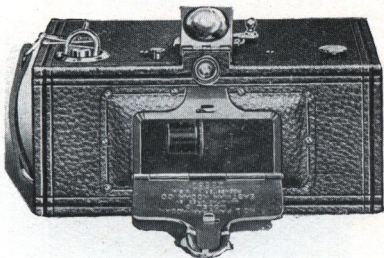
Size of Kodak, $2\frac{3}{16} \times 4\frac{3}{4} \times 10\frac{1}{2}$ in. Weight, $47\frac{1}{2}$ oz.

Lenses, Kodak Anastigmat, *f.* 7.7, $5\frac{1}{4}$ in. focus.

Shutter, double valve, Stereo Automatic, with cable release.

Brilliant finder, tripod socket, rising front, rack and pinion for focussing, and black leather bellows.

Panoram Kodaks



FOR taking panoramic pictures of outdoor groups, landscapes, mountain views. Simplicity itself. The No. 1 has a scope of 112 degrees: the No. 4 of 142 degrees.

The single lens ordinarily fitted is specially selected for quality and focal length, and these Kodaks can also be obtained equipped with Ross Homocentric lenses. Both cameras have Panoram shutter, two tripod sockets, and brilliant finder with hood.

No. 1

For Panoramic pictures, $7 \times 2\frac{1}{4}$ in.

Capacity, 6 exposures without reloading.

Size of Kodak, $3\frac{3}{8} \times 4\frac{3}{8} \times 7\frac{3}{8}$ in. Weight, 24 oz.

Takes Kodak N.C. Film.

No. 4

For Panoramic pictures, $12 \times 3\frac{1}{2}$ in.

Capacity, 4 exposures without reloading.

Size of Kodak, $4\frac{3}{4} \times 5\frac{5}{8} \times 10\frac{1}{8}$ in. Weight, 46 oz.

Takes Kodak N.C. Film.

No. 0 Brownie



THIS little Brownie makes pictures the popular Vest Pocket size, $2\frac{1}{2} \times 1\frac{5}{8}$ inches. It is accurate, reliable, efficient and economical to operate, and anybody can make good pictures from the start.

Like all the Brownies, it loads and unloads in daylight with Kodak Film Cartridges.

For pictures, $2\frac{1}{2} \times 1\frac{5}{8}$ in.

Capacity, 8 exposures without reloading.

Size of Brownie, $2\frac{5}{8} \times 3\frac{3}{8} \times 4\frac{1}{8}$ in Weight, 8 oz.

Lens, meniscus, 3 in. focus.

Shutter, Eastman Rotary, with one stop.

Nos. 2 and 2A Brownies



THE idea of simplicity and reliability combined in an inexpensive camera has stood the test of years, and the Nos. 2 and 2A, like the other little box-form Brownies, have proved a delight to those who have used them.

Both cameras have Eastman Rotary Shutters with three stops and two finders.

No. 2

For pictures, $3\frac{1}{4} \times 2\frac{1}{4}$ in.

Capacity, 6 exposures without reloading.

Size of Brownie, $3\frac{1}{4} \times 4 \times 5\frac{3}{8}$ in. Weight, 13 oz.

Lens, single, meniscus.

Takes Kodak N.C. Film.

No. 2A

For pictures, $4\frac{1}{4} \times 2\frac{1}{2}$ in.

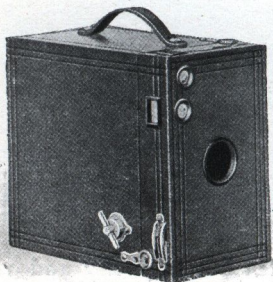
Capacity, 12 exposures without reloading.

Size of Brownie, $3\frac{7}{16} \times 5\frac{1}{8} \times 6\frac{1}{8}$ in. Weight, 21 oz.

Lens, single, meniscus achromatic.

Takes Kodak N.C. Film.

Nos. 2C and 3 Brownies



THE $4\frac{1}{4} \times 3\frac{1}{4}$, or quarter-plate, has always been a favourite size, and the No. 3 Brownie with its fixed focus and consequent simplicity is no exception to this rule.

The new No. 2C Brownie takes a picture $4\frac{7}{8} \times 2\frac{7}{8}$ inches, one of the most popular amateur sizes. It has slightly more picture area than the No. 3, and its shape is adaptable to almost every composition.

Both of these cameras are covered with durable imitation leather, with metal parts nickelled, and have the daylight-all-the-way feature of the Kodaks.

While the Brownies are especially popular among children on account of their simplicity, they are used almost as freely by "grown-ups" who desire to make pictures easily and with a minimum of expense. Both these Brownies are equipped with single Lens (meniscus achromatic), the Eastman Rotary Shutter with three stops, two tripod sockets, and two view finders.

No. 2C

For pictures $4\frac{7}{8} \times 2\frac{7}{8}$ in.

Capacity, 10 exposures without reloading.

Size of Brownie, $3\frac{7}{8} \times 6\frac{1}{4} \times 7\frac{1}{4}$ in. Weight 27 oz.

Takes Kodak N.C. Film.

No. 3

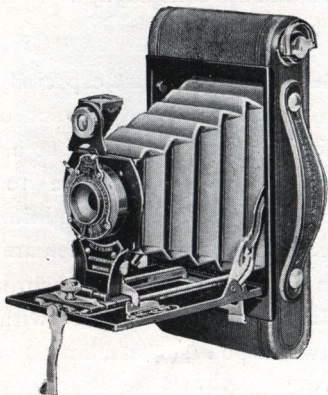
For pictures $4\frac{1}{4} \times 3\frac{1}{4}$ in.

Capacity, 12 exposures without reloading.

Size of Brownie, $4\frac{3}{8} \times 5\frac{1}{8} \times 6\frac{1}{8}$ in. Weight 24 oz.

Takes Kodak N.C. Film.

Nos. 2 and 2A
Folding *Autographic* Brownies



BEHIND the Brownie name stands years of practical experience in the best, most usable and most serviceable camera construction. Possessing, as they do, the autographic feature, the round ends and compact form, these two Brownies are as efficient as they are simple to operate.

These thoroughly reliable little instruments load in daylight with Autographic

Film Cartridges; they are fitted with single (meniscus achromatic) lenses, or, if desired, with Rapid Rectilinear. They have the Kodak Ball Bearing shutter with Time and Brief Time action and speeds of $\frac{1}{25}$ and $\frac{1}{50}$ for the No. 2 and also $\frac{1}{100}$ for the No. 2A.

These Folding Brownies have Kodak Ball Bearing Shutters, fitted with Kodak Autotime Scale; reversible finders; two tripod sockets; automatic focussing lock; black leather bellows.

The cameras are made of metal, covered with durable imitation leather; they are well made and carefully finished in every particular.

No. 2

For pictures $3\frac{1}{4} \times 2\frac{1}{4}$ in.

Capacity, 6 exposures without reloading.

Size of Brownie, $1\frac{1}{4} \times 3\frac{3}{8} \times 6\frac{1}{2}$ in. Weight 19 oz.

Takes Kodak Autographic Film.

No. 2A

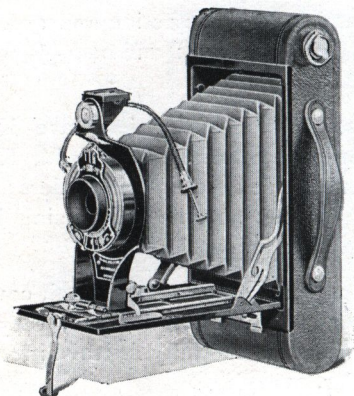
For pictures $4\frac{1}{4} \times 2\frac{1}{2}$ in.

Capacity, 12 exposures without reloading.

Size of Brownie, $1\frac{7}{8} \times 3\frac{3}{8} \times 7\frac{7}{8}$ in. Weight, 24 oz.

Takes Kodak Autographic Film.

Nos. 2C and 3A
Folding *Autographic* Brownies



THESE two Brownies are cleverly constructed and well made throughout. The loading is very simple; they are quick to operate and like the other Folding Brownies have the *Autographic* feature.

Both cameras load with ten or six exposure *Autographic* Film Cartridges;

they have the Kodak Ball Bearing shutter with snap-shot speeds of $\frac{1}{25}$, $\frac{1}{50}$ and $\frac{1}{100}$ of a second, and they are fitted with either single (meniscus achromatic) or double (Rapid Rectilinear) lenses.

These cameras are fitted with Kodak Ball Bearing Shutters, with Autotime Scale; reversible finders; two tripod sockets; automatic focussing locks; black leather bellows.

Both are made of metal covered with durable imitation leather, and have black leather bellows and nickel and black enamel fittings. They have the shapely and convenient round ends. Their operation is so simple as to make the taking of good pictures a matter of course.

No. 2C

For pictures $4\frac{7}{8} \times 2\frac{7}{8}$ in.

Capacity, 10 exposures without reloading.

Size of Brownie, $1\frac{3}{4} \times 3\frac{3}{4} \times 8\frac{11}{16}$ in. Weight, 25 oz.

Takes Kodak Autographic Film.

No. 3A

For pictures $5\frac{1}{2} \times 3\frac{1}{4}$ in.

Capacity, 10 exposures without reloading.

Size of Brownie, $1\frac{11}{16} \times 4\frac{5}{16} \times 9\frac{5}{16}$ in. Weight, 38 oz.

Takes Kodak Autographic Film.

The Graflex

THE Graflex is the camera that eliminates photographic uncertainties. Its construction is such that the operator can see the image right side up, the size it will appear in the negative, *up to the instant of exposure*. The changing composition, the expression, or the arrangement of the subject can be watched until the required pictorial effect is secured, when a slight pressure on a lever releases the shutter, and the exposure is made. The image projected by the lens is reflected from the mirror, in the body of the camera, to the ground glass focussing screen in the top. This method of focussing makes it unnecessary to estimate the distance between the camera and subject, doing away with both focussing scale and "finder." There is no guess work with a Graflex.

Every Graflex is equipped with the Graflex Focal Plane Shutter. With this shutter it is possible to make automatic exposures ranging from $\frac{1}{10}$ to $\frac{1}{1000}$ of a

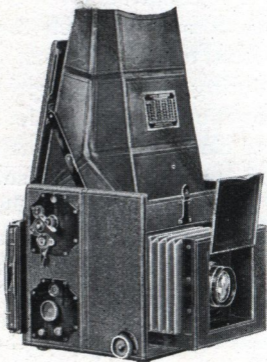
second, as well as time exposures of any duration. The construction of the Graflex Focal Plane Shutter is such that it permits the lens to work at its maximum efficiency during the entire period of exposure—no illumination is lost in the opening and closing of the shutter. With the Graflex you can make snap shots indoors or in the deep woods, while under favourable light conditions you can secure fully timed negatives of objects moving with the utmost rapidity.

The Graflex is made with the utmost precision from the best materials that have ever been used in camera construction, and is subjected to a rigid inspection and test before being placed on the market.

The rich appearance of the Graflex is fully in keeping with its mechanical excellence.

The body of the camera is made of the finest grade of mahogany, covered with Persian morocco leather. All uncovered wood parts are ebonized, and all exposed metal parts are oxydized.

The Auto Graflex



THE Auto Graflex is offered in three sizes: $4\frac{1}{4} \times 3\frac{1}{4}$, 5×4 , and 7×5 in, each of the models embodying the exclusive Graflex features. The reflecting mirror and Graflex Focal Plane Shutter are a part of this camera, the shutter permitting speeds from time to $\frac{1}{1000}$ of a second. The new design focussing hood renders focussing particularly easy, and is readily detachable.

The Auto Graflex takes the regular Graflex Plate Holder, and is constructed to take the Graflex Roll Holder, the

Graflex Magazine Plate Holder, which may be loaded with twelve glass plates, and the Film Pack Adapter which takes the Film Pack.

The Auto Graflex may be fitted with any of the well known Anastigmats, although experience has proved that the most satisfactory results will be obtained with the lenses listed with each model.

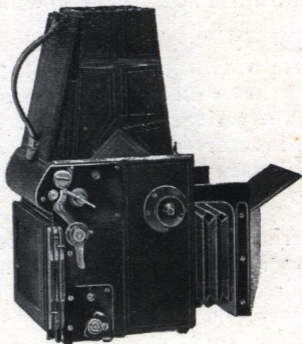
The 7×5 Auto Graflex differs slightly in construction from the smaller sizes. Since room must be allowed for the action of the mirror, it is impossible to fit short focus lenses.

For pictures, $4\frac{1}{4} \times 3\frac{1}{4}$ in.
Dimensions, $5\frac{3}{4} \times 5\frac{3}{8} \times 6\frac{1}{4}$ in. Weight, $3\frac{3}{8}$ lb.
Focal capacity, 7 in.
Size of lens board, $2\frac{7}{8} \times 2\frac{7}{8}$ in.
Minimum focus of lens accommodated, 5 in.

For pictures, 5×4 in.
Dimensions, $6\frac{3}{4} \times 6\frac{1}{4} \times 7\frac{1}{4}$ in. Weight, 5 lb.
Focal capacity, $8\frac{1}{2}$ in.
Size of lens board, $3\frac{1}{4} \times 3\frac{1}{4}$ in.
Minimum focus of lens accommodated, 6 in.

For pictures, $6\frac{1}{2} \times 4\frac{3}{4}$ or 7×5 in.
Dimensions, $9\frac{1}{4} \times 8\frac{1}{4} \times 8\frac{3}{4}$ in. Weight, 8 lb.
Focal capacity, 12 in.
Size of lens board, 4×4 in.
Minimum focus of lens accommodated, $7\frac{1}{2}$ in.

The Auto Graflex Junior



THIS little camera, although small in size and light in weight, embodies all of the exclusive Graflex features—the reflecting mirror, Graflex Focal Plane Shutter with safety device, and Graflex quality and workmanship.

The shutter is the standard Auto Graflex Focal Plane Shutter, with five fixed apertures, permitting exposures of any duration from time to $\frac{1}{1000}$ of a second. A safety

device is provided which prevents the winding of the shutter curtain until the reflecting mirror is depressed, thus preventing the possibility of fogging the plate or film.

The front is of exceptional rigidity, as the focussing racks and front standards are stamped from one piece of heavy brass.

The focussing hood is readily detachable, allowing easy access to the ground glass focussing screen. The focussing hood is automatic in its action, and is finished with a square top, making it exceptionally easy to secure vertical pictures with the camera held on its side.

The Auto Graflex Junior is supplied with a depressed cupped metal front for carrying the lens.

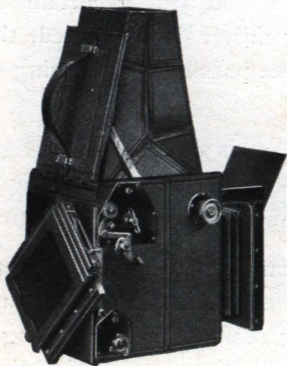
For pictures, $3\frac{1}{4} \times 2\frac{1}{4}$ in.

Dimensions, closed, $5 \times 4\frac{3}{8} \times 5$ in.

Focal capacity, $5\frac{1}{2}$ in. Weight, 39 oz.

Minimum focus of lens accommodated, 4 in.

Revolving Back Graflex Junior



FITTED with revolving back, permitting the back to be turned from a vertical to a horizontal position or intermediately, without removing it. In other respects the camera is practically the same as the Auto Graflex Junior.

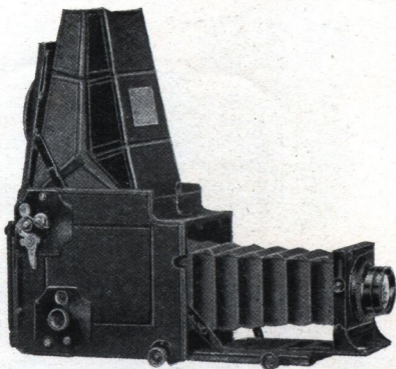
For pictures, $3\frac{1}{4} \times 2\frac{1}{4}$ in.

Dimensions, closed, $6 \times 4\frac{1}{2} \times 6\frac{1}{4}$ in. Weight, $3\frac{1}{4}$ lb.

Focal capacity, $7\frac{1}{4}$ in.

Minimum focus of lens accommodated, $5\frac{1}{4}$ in.

Revolving Back Auto Graflex



THE great bellows capacity of this camera permits close approach for full sized reproduction.

For pictures, $4\frac{1}{4} \times 3\frac{1}{4}$ in.

Dimensions, $8\frac{1}{2} \times 5\frac{1}{2} \times 7$ in. Weight, $5\frac{3}{4}$ lb.

Size of lens board, $3\frac{1}{4} \times 3\frac{1}{4}$ in.

Focal capacity, $15\frac{1}{2}$ in.

Minimum focus of lenses accommodated, $7\frac{1}{8}$ in.

For pictures 5×4 in.

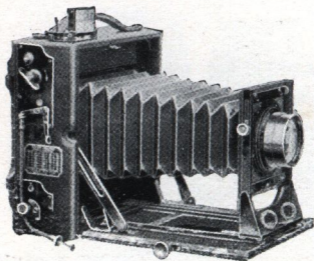
Dimensions, $10 \times 6\frac{1}{4} \times 8$ in. Weight, $7\frac{1}{2}$ lb.

Size of lens board, $3\frac{3}{4} \times 3\frac{3}{4}$ in.

Focal capacity, $18\frac{1}{2}$ in.

Minimum focus of lens accommodated, $8\frac{3}{8}$ in.

The Speed Graphic



THIS camera is designed for those requiring Focal Plane Shutter efficiency in a compact folding camera. The front of the Speed Graphic is large enough to take the high speed Anastigmat lenses, and sufficiently firm to prevent vibration when the bellows are extended to their full capacity. The camera is equipped with double extension movement.

The Speed Graphic is fitted with the Graflex Focal Plane Shutter, giving exposures in the case of the $4\frac{1}{4} \times 3\frac{1}{4}$ from Time to $\frac{1}{500}$ of a second, and as regards the larger sizes to $\frac{1}{1000}$ of a second. It

is covered with the best quality morocco leather. All exposed wood parts are ebonised, and the metal work is oxidised.

It includes the following adjustments :—
Rack and pinion for focussing. Rising front. Direct View Finder. Removable lens board and two tripod sockets.

For pictures $4\frac{1}{4} \times 3\frac{1}{4}$ in.

Dimensions, closed, $5\frac{3}{4} \times 2\frac{3}{4} \times 6\frac{1}{2}$ in.

Focal capacity, 10 in. Weight, $2\frac{1}{2}$ lbs.

Size of lens board, $2\frac{1}{2} \times 2\frac{1}{2}$ in.

For pictures 5×4 in.

Dimensions, closed, $6\frac{1}{2} \times 4 \times 6\frac{3}{8}$ in.

Focal capacity, 12 in. Weight, $3\frac{1}{2}$ lbs.

Size of lens board, $3\frac{1}{4} \times 3\frac{1}{4}$ in.

For pictures $5\frac{1}{2} \times 3\frac{1}{4}$ in.

Dimensions, closed, $7 \times 3\frac{1}{8} \times 7\frac{1}{2}$ in.

Focal capacity, 12 in. Weight, $3\frac{3}{4}$ lbs.

Size of lens board, $3\frac{1}{4} \times 3\frac{1}{4}$ in.

For pictures $6\frac{1}{2} \times 4\frac{3}{4}$ or 7×5 in.

Size of camera, $8\frac{3}{4} \times 3\frac{3}{4} \times 9\frac{3}{8}$ in.

Focal capacity, 16 in. Weight, $5\frac{1}{2}$ lbs.

Size of lens board, $3\frac{3}{4} \times 3\frac{3}{4}$ in.

Premo Cameras



LIGHT and compact, Premo Cameras are made upon such a simple principle that every operation, from loading to changing the film, can be performed more easily and quickly than with any other type of camera. To load, the hinged back of the camera is opened, the Premo Film Pack is dropped in, the back is closed, and the safety cover, protecting the first exposure, is drawn. The films are changed for successive exposures by drawing out the consecutively numbered tabs. The Film Pack is automatically rendered light tight when the last tab is drawn. To unload, the back is opened, and the Film Pack can then be removed.

With the Premo Film Pack adapter, plate cameras may readily be converted into daylight-loading film apparatus, providing all the convenience afforded by the use of film.

Premo Junior



THIS simple and reliable camera requires no focussing nor estimating of distance and is always ready for use. Well made with carefully selected lenses. Takes the Premo Film Pack.

No. 1.

For pictures $3\frac{1}{4} \times 2\frac{1}{2}$ in.

Capacity, 12 exposures without reloading.

Size of Camera, $3\frac{1}{8} \times 4\frac{1}{2} \times 5\frac{3}{4}$ in. Weight 11 oz.

Shutter, Rotary Automatic with diaphragm stops.

Lens, Meniscus. Two Finders. Two tripod sockets.

No. 1A

For pictures $4\frac{1}{4} \times 2\frac{1}{2}$ in.

Size of Camera, $3\frac{1}{2} \times 5\frac{1}{2} \times 5\frac{7}{8}$ in. Weight 14 oz.

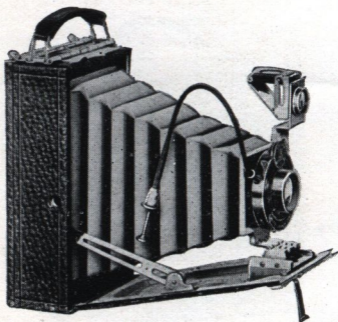
Lens, Meniscus Achromatic.

No 3

For pictures $4\frac{1}{4} \times 3\frac{1}{4}$ in.

Size of Camera, $5\frac{3}{4} \times 5\frac{1}{2} \times 4$ in. Weight 20 oz.

Premoette Junior



THE Premoette Junior folds into such compact form that it may be conveniently carried in the pocket; and clearly defined pictures of excellent quality are obtained upon Premo Film Packs, which provide the utmost simplicity of loading and unloading, and of changing the exposed film. Enlargements, many times larger than the contact prints, may be made from the negatives produced by this camera.

For pictures $3\frac{1}{4} \times 2\frac{1}{4}$ in.

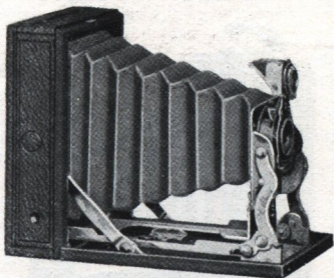
Capacity, 12 exposures without reloading.

Size of camera, $1\frac{1}{2} \times 3 \times 4\frac{3}{4}$ in. Weight 12 oz.

Finder, collapsible, reversible, brilliant.

Body, aluminium. Two tripod sockets.

Pocket Premo



AN attractive camera embodying extreme compactness and simplicity of loading and operating.

The front automatically unfolds and is extended and locked rigidly in focussing position.

The lens is a Meniscus Achromatic of excellent quality, and the shutter, the Kodak Ball Bearing, with speeds of $\frac{1}{25}$ and $\frac{1}{50}$ of a second as well as bulb and time exposures.

The back is collapsible, and the camera when closed has about the same dimensions as two $3\frac{1}{4} \times 2\frac{1}{4}$ Film Packs.

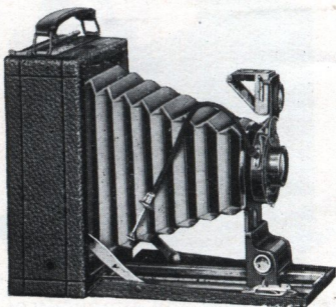
For pictures $3\frac{1}{4} \times 2\frac{1}{4}$ in.

Capacity, 12 exposures without reloading.

Size of Camera, $1\frac{1}{4} \times 3\frac{1}{4} \times 4\frac{9}{16}$ in. Weight 18 oz.

Shutter, Kodak Ball Bearing. Lens, Meniscus Achromatic. Finder, Collapsible. Two tripod sockets. Takes Premo Film Pack.

Premoette Senior



DESIGNED to provide for the most popular amateur sizes of pictures, the Premoette Senior also embodies the advantages of compactness, simplicity of operation, and standard lens equipments. It is supplied with R. R. Lens or the Kodak Anastigmat, *f.* 7.7, and is especially recommended with the Anastigmat. The definition and covering power of this lens is equal to any anastigmat made, and has a higher speed than any R. R. lens. Thus in getting this camera, the amateur assures himself not only of the microscopic definition of the finest anastigmat, but also of a greater speed than is possible with the ordinarily equipped camera.

The Premoette Senior can be loaded very quickly in any light.

The shutter is the Kodak Ball Bearing with time and bulb actions and retarded speed of $\frac{1}{25}$, $\frac{1}{50}$ and $\frac{1}{100}$ seconds. It works with either cable or finger release, and is unusually accurate and reliable.

Premoette Seniors are covered with genuine leather of selected grain, metal parts are finished in nickel and black lacquer. When fitted with Kodak Portrait Attachment the pleasing proportions of the pictures make these cameras excellent for home portraiture.

No. 1A

For pictures $4\frac{1}{4} \times 2\frac{1}{2}$ in.

Capacity, 12 exposures without reloading.

Size of camera, $1\frac{7}{8} \times 3\frac{5}{8} \times 5\frac{5}{8}$ in. Weight, 21 oz.

Takes Premo Film Pack.

No. 3

For pictures $4\frac{1}{4} \times 3\frac{1}{4}$ in.

Capacity, 12 exposures without reloading.

Size of camera, $1\frac{15}{16} \times 4\frac{1}{16} \times 5\frac{5}{8}$ in. Weight, 22oz.

Takes Premo Film Pack.

No. 3A

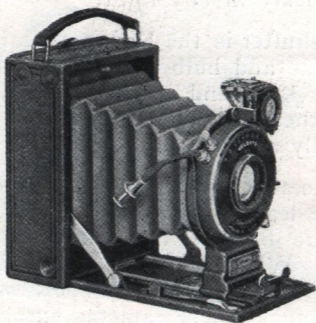
For pictures $5\frac{1}{2} \times 3\frac{1}{4}$ in.

Capacity, 12 exposures without reloading.

Size of camera, $2\frac{1}{4} \times 4\frac{1}{2} \times 7\frac{1}{8}$ in. Weight 35 oz.

Takes Premo Film Pack.

Premo No. 12



IN the Premo No. 12 is offered a camera of really remarkable compactness, but so cleverly constructed as to offer every essential feature for making the best of pictures under all conditions of photography.

This camera is sold provided with Film Pack Adapter and Premo Film Pack, but it takes glass plates or Eastman Graflex roll film with equal facility, for which latter a special roll holder is provided. It has a ground glass for accurate focussing and composition, which is frequently very helpful in securing the best pictorial effects, or the focussing pointer may of course be set on the scale at the point

indicating the estimated distance. It has two tripod sockets, reversible brilliant finder with revolving mask, and special focussing lever.

The camera is regularly fitted with Velosto shutter, with speeds ranging from one second to $\frac{1}{300}$ of a second, and adjustments for bulb and time exposures, and with Bausch & Lomb Kodak Anastigmat lens, *f*.6.3 . It can also be supplied with other anastigmat lenses, all of the proper focal length for the size of picture.

In addition to high speed lenses, the camera is also offered with either R. R. or Kodak Anastigmat, *f*. 7.7 lens with Kodak Ball Bearing Shutter, making an exceptionally attractive outfit at a low price.

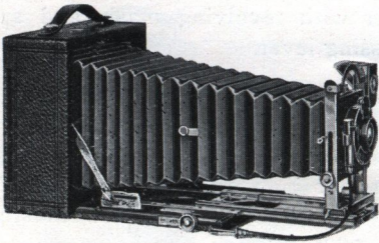
For pictures $3\frac{1}{4} \times 2\frac{1}{4}$ in.

Capacity, 1 glass plate, or 12 Film Pack exposures without reloading.

Size of camera, $1\frac{5}{8} \times 3\frac{1}{4} \times 4\frac{5}{8}$ in. Weight 24 oz.

Box, aluminium. Bed, aluminium with special lever focussing device. Reversible Finder with revolving mask. Two tripod sockets.

Premo No. 9



THIS efficient camera is designed for the amateur who desires an instrument of very wide scope. With its complete equipment and accurate, convenient mechanical adjustments, it is a camera of wide capabilities and superior quality.

The bellows has sufficient draw to permit the use of the single lens combination or a telephoto attachment of several magnifications. The extension plate is actuated by rack and pinion provided with a simple locking device.

The standard is very rigid, and incorporates a rising and falling front of great latitude. This, in connection with the

swing bed construction, makes it an easy matter to take pictures of tall buildings, etc., without tipping the camera. The lens board is removable, and the back is reversible.

The camera is regularly fitted with Planatograph lens and Kodak Ball Bearing shutter but it can also be furnished with Bausch and Lomb Kodak Anastigmat lens *f.* 6.3 and Velosto shutter. The 5×4 and $5\frac{1}{2} \times 3\frac{1}{4}$ in. models take also the Kodak Anastigmat lens *f.* 7.7 and B.B. shutter, or the Kodak Anastigmat lens *f.* 6.3 and Velosto shutter.

For pictures 5×4 in.

Draw, 13 in.

Capacity, 12 film or 2 plate exposures without reloading.

Size of camera, $3 \times 7 \times 7$ in. Weight, 63 oz.

For pictures $5\frac{1}{2} \times 3\frac{1}{4}$ in.

Draw, 13 in.

Capacity, 12 film or 2 plate exposures without reloading.

Size of camera, $3 \times 7 \times 7$ in. Weight, 63 oz.

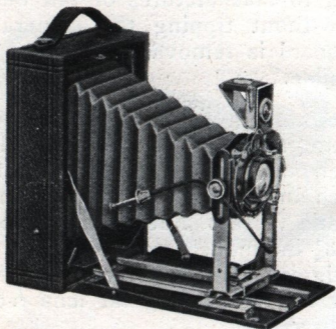
For pictures $6\frac{1}{2} \times 4\frac{3}{4}$ or 7×5 in.

Draw, $15\frac{1}{4}$ in.

Capacity, 12 film or 2 plate exposures without reloading.

Size of camera, $2\frac{7}{8} \times 8\frac{1}{4} \times 8\frac{1}{4}$ in. Weight, 76 oz.

Premo No. 8



AN inexpensive reliable plate camera. The Premo Film Pack Adapter instantly converts it into a daylight-loading film camera with the advantage of ground glass focussing.

It has rising and falling front, Planatograph lens and Kodak Ball Bearing shutter. The $5\frac{1}{2} \times 3\frac{1}{4}$ model also takes the Kodak Anastigmat lens *f.* 7.7.

For pictures 5×4 in.

Capacity, 12 film pack or 2 glass plate exposures.

Size of camera, $2 \times 5\frac{1}{4} \times 6\frac{1}{2}$ in. Weight, 30 oz.

For pictures $5\frac{1}{2} \times 3\frac{1}{4}$ in.

Capacity, 12 film pack or 2 glass plate exposures.

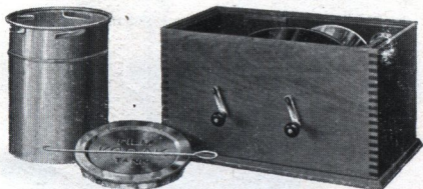
Size of camera, $2 \times 5 \times 7\frac{1}{4}$ in. Weight, 34 oz.

For pictures $6\frac{1}{2} \times 4\frac{3}{4}$ or 7×5 in.

Capacity, 12 film pack or 2 glass plate exposures.

Size of camera, $2\frac{1}{4} \times 6\frac{1}{4} \times 8\frac{1}{2}$ in. Weight, 42 oz.

Kodak Film Tank



With the Kodak Film Tank every step in development may be performed in daylight. It is so simple as to be readily understood even by the novice, who can get as good results from it as can an expert by any known method.

No. 2 Brownie Developing Box



A metal box and cover, 15 inches long, to take a roll of No. 1, No. 2 or No. 2 Folding Autographic Brownie film in one loop.

Premo Film Pack Tank



THE Premo Film Pack Tank assures the veriest beginner that every pack of films placed in the tank, where the simple directions are implicitly followed, will come out developed perfectly. No experience is required. It places the novice upon the same plane in development as the expert.

Eastman Plate Tank

To secure the best results, plates should be developed in the Eastman Plate Tank.

Loaded with plates in the dark room, it can be brought out into any light for development.



Complete Outfits (Daylight)



The Kodak Outfit and The Brownie Outfit

CONTAIN Kodak or Brownie, Film, Film Tank, and everything necessary for successfully developing exposures and for making finished prints from negatives by the Kodak Daylight Method. No dark room is required.

Complete Outfits—Continued (Daylight)

No. 2 Brownie Junior Outfit

Contains No. 2 Brownie, Film, Brownie Developing Box, and everything necessary for developing exposures and making prints from negatives.

Vest Pocket Autographic Kodak Outfit

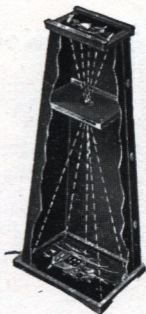
Contains Kodak in Leather Case, Film, Vest Pocket Kodak Film Tank, Slip-in Album for 12 prints, and everything necessary for developing exposures and making prints from negatives.

A.B.C. Developing and Printing Outfit

For developing (in the dark room) Kodak Film or Glass Plate Negatives, and for making and finishing a number of prints from these.

Brownie Enlarging Camera

A LIGHT-TIGHT Cone, taking a negative at one end and a sheet of Bromide or Velox paper at the other. Its characteristic is its great simplicity. It is folded flat for packing or carrying.



No. 2 Brownie Enlarger,

for Nos. 1 and 2 Brownie and No. 1 Kodak Negatives.

No. 3 Brownie Enlarger,

for Nos. 2A and 3 Brownie and Nos. 1A and 3 Kodak Negatives.

No. 4 Brownie Enlarger,

for Nos. 2C and 3A Brownie and Nos. 2C, 3A and 4 Kodak Negatives.

No. 2 Brownie

Post Card Enlarging Camera

A non-collapsible cone for post card size enlargements from $3\frac{1}{4} \times 2\frac{1}{4}$ in. negatives (No. 1 Kodak or No. 2 Brownie).

Vest Pocket Enlarging Camera

Of same type as above, making post card size enlargements, $5\frac{1}{2} \times 3\frac{1}{4}$ in. from $2\frac{1}{2} \times 1\frac{5}{8}$ in. negatives (Vest Pocket Kodak or No. 0 Brownie).

Tripods



Kodak Metal Tripod

An ideal light, compact and rigid tripod with telescopic legs of brass tubing—lower sections nickelled—upper ones enamelled.

| No. | Sec- tions | Closed in. | Extended in. | Weight oz. |
|-----|---------------|---------------|-----------------|---------------|
| 0 | 3 | 15½ | 39½ | 15 |
| 1 | 4 | 15 | 48½ | 24½ |
| 2 | 5 | 13½ | 49½ | 25 |
| 1C | 4 | 15¼ | 48⅞ | 25½ |
| 2C | 5 | 13¼ | 49⅞ | 26 |
| 6 | 6 | 11¾ | 40 | 24 |

Black Leather Case for Kodak
Metal Tripod (any model)

Wooden Tripods

Two fold. Adjustable legs.

| | Closed in. | Extended in. |
|-------------------|---------------|-----------------|
| Flexo | 29 | 54 |
| Bull's-Eye | 24 | 42½ |

Three-fold.

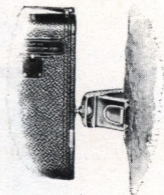
Eastman Standard, telescopic legs.

Closed, 21 in. Extended, 54 in.

Tripod Attachments

The Kodapod

A little metal attachment with strong jaws for fastening your camera to a tree, fence or other object. Easily carried in the pocket.



The Optipod

This device enables you to attach your camera equally easily to a tripod, table, chair, motor car, or any firm object. Further you can tilt your camera to any angle by means of the ball and socket head.

Tripod Adapter

For Vest Pocket Kodak

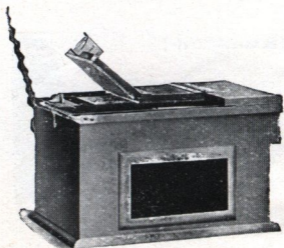
This little metal adapter slips easily on to the lens support of the Vest Pocket Kodak. It has two sockets and so enables this Kodak to be used on a tripod for both vertical and horizontal pictures.

Tripod Adapter

For Nos. 0, 2, and 2A Brownies

This little metal adapter enables you to fix your small Brownie easily on a tripod for both vertical and horizontal pictures.

Kodak Amateur Printer



THE Kodak Amateur Printer enables the amateur to make any number of uniformly masked prints from the same negative—and quickly—with Velox or any developing-out paper. The Printer consists of a box with a removable top, and in it a glass window through which the printing is done. Prints may be made with white margins, any size from $2\frac{1}{2} \times 1\frac{5}{8}$ up to and including 5×4 and $5\frac{1}{2} \times 3\frac{1}{4}$ in. Within the box a red electric lamp is required to permit of adjusting the negative and paper, and also a 16 c.p. electric lamp, which is automatically turned on when the hinged frame is closed to make the exposure.

The Printer is supplied complete, without lamps, but it includes $5\frac{1}{2}$ ft. of electric light cord and socket.

Dry Plates

Eastman.

Great latitude in exposure, perfect gradation, brilliant soft negatives.

In Rapid, Extra Rapid, S.U.R., Supersensitive and Orthochromatic.

Royal Standard.

Ease and certainty of manipulation, fineness of grain.

In Rapid, Extra Rapid, Special Extra Rapid, Lightning and Orthochromatic.

Seed.

Rich emulsion, fine grain, crisp images.

In 26 (Rapid). Gilt Edge, 27 (Extra Rapid.) Orthochromatic.

Wratten "London."

Supreme quality. Possess marvellous keeping powers under most trying conditions.

In Ordinary, Instantaneous, Double Instantaneous and Speed.

Wratten Panchromatic

Sensitive to all the colours of the spectrum. Invaluable when photographing subjects containing colour.

Kodak Papers

Velox. Prints in day or artificial light, no dark room for developing, extremely simple.

VIGOROUS in Carbon (Dead Matt), Art (Satin Surface), Glossy (Enamelled).

SOFT in Art (Satin Surface), Glossy (enamelled), Special Portrait (nearly Matt), Special Carbon (Dead Matt).

Bromide. For contact printing by artificial light; for enlarging by day or artificial light. Developed in dark room. In Permanent (Rapid or Slow, Smooth), Rapid (Rough), Platino-Matte, (Rapid or Slow, Smooth), Rapid (Rough), Royal (Rapid), White Royal (Rapid), Cream (Rapid Smooth, Matte,) Nikko (Glossy) in Mauve, White and Pink. Velvet (Rapid).

Transferotype. For making Bromide positives transferable to glass, plaques, etc.

Solio P.O.P.

The Standard Gelatino-Chloride Printing-out Paper. Rapid, rich in silver, gives superb tones. In Glossy (White and Mauve) and Matt.

Self-Toning Solio

Simple to use, uniform results in warm or cold tones. Prints obtained of finest colour.

Kodak Portrait Attachment

Pocket cameras are not made to work close up to the subject. The Kodak Portrait Attachment enables you to put your camera as near as $3\frac{1}{2}$ ft. to the subject and obtain a sharp picture on a large scale.

When ordering your attachment please specify the model of your camera and the lens and shutter.



Wratten K. Filters

For the purpose of removing the excess of blue and violet sensitiveness remaining in even the best colour-sensitive plates. The K. filters absorb the least possible amount of green, orange or red, and completely absorb the ultra violet while allowing sufficient blue and violet to be transmitted.

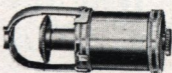
Kodak Sky Filters and Colour Filters

The Sky Filter equalizes the difference of light between the sky and the foreground in landscape photography, the upper half being stained yellow to relieve the brightness from the sky.

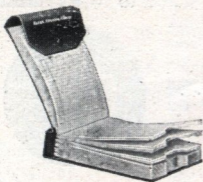
The Colour Filter is of great value in outdoor photography, holding back the strong blue and violet rays, affording the weaker colours time to record.

Kodak Self Timer

The Kodak Self Timer presses the button and permits the person who takes the picture to be one of the group.



Kodak Film Storage Album



In art linen with glove button fastener. Contains 100 numbered transparent envelopes with index.

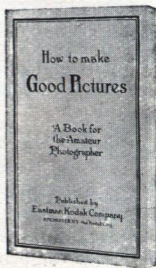
Made in 7 models to suit Kodak Films of all sizes.

“How to make Good Pictures”

The Kodak Book of Practical Instruction

If you do not make a good picture every time, this book will tell you why you do not, and how you can do it. If you already make good pictures, it will tell you how to make still better ones more easily.

Clear, concise and profusely illustrated.

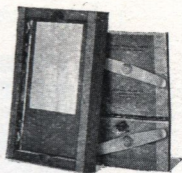


Kodak Tested Chemicals



When you see the Kodak Tested Chemical seal you can be sure the chemicals that bear it are absolutely right. They are put up in Glass Cartridges for travelling, in Packets for mixing when required, and in Solutions for use at any time.

Kodak Maskit Printing Frame



Overcomes the difficulty of the negative and mask slipping on the glass, and secures prints with a uniform white margin.

Eastman Non-Slip Printing Frame

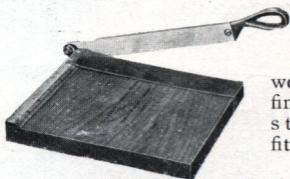
Strong and compact with device for preventing the print from slipping while being examined in the frame. Made of polished wood with brass springs.

Eastman Kodaloid Printing Mask

For giving a white edge to Velox and Bromide prints.

Non-actinic yet perfectly transparent, orange in colour, and fully protects the margin of the print.

Kodak Print Trimming Board

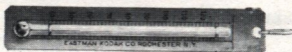


Made of hard wood, with natural finish, fine quality steel blade and fitted with rule.

Kodak Thermometer Stirring Rod

A glass stirring rod enclosing an accurate thermometer. Has flat end for crushing purposes.

Eastman Thermometer



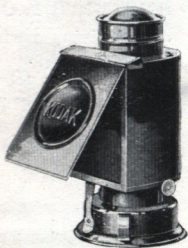
Especially valuable in tank or tray development. Has hook for suspending and curved back to fit inside Tank.

Flexible Rubber Tray

A portable tray which fits over the bottom of the $3\frac{1}{2}$ in. Kodak Film Tank Box. Will fix or wash two 12-exposure spools at one time, and is graduated for 32 or 64 ounces of solution.

Kodak Dark Room Lamp

Is oil burning and is fitted with both ruby and orange glass. It has an unusually broad wick regulated from the outside, and gives a soft, steady light.



Wratten Dark Room Lamp

Gives the maximum illumination with the minimum risk of fog, and none but reflected light is allowed to pass. Is made for oil, for gas or for electricity, and always keeps cool. The standard lamp is fitted with a 10×8 safelight, but a smaller size is also sold fitted with a 7×5 safelight.

Magnesium Ribbon Holder

Comprises a compact magazine for storing magnesium ribbon, a convenient holder for burning it, and a ready means of measuring definite lengths of ribbon.



Velox Water Colour Stamps

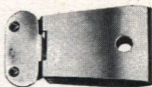
For the colouring of prints, these colours are the simplest of all to use, working especially well with Velox. In 12 sheets of colours, each sheet divided by perforations into 26 stamps, which

are torn off for use. Outfit consists of book of 12 colours, 3 brushes and palette, in cardboard case.



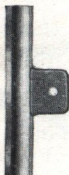
Kodak Junior Film Clip

Most practical for tray development or drying of films. Has two jaws to prevent film from slipping. Made in three sizes,



Kodak Film Developing Clips

Heavily nickelled, made in pairs, 5 in. and 3½ in. each.



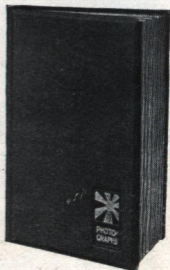
Kodak Pocket Album



Dainty slip-in album, small enough to be carried in the vest pocket. Dark green or dark brown linen-grain surface leaves, limp roan covers

Newlyn Album

Leaves of matt art card, dark green, brown or grey, with white relief round openings. Cloth covers with bevelled edges. Blocked in gold.



Regent Flexible Album

Contains 50 thick brown art paper leaves, with guard between each. Bound in blue-black imitation leather, flexible covers. Prints can be attached to the leaves by their left hand edges.

