



PREMO
CAMERAS

PREMO CAMERAS

1913

MANUFACTURED BY
ROCHESTER OPTICAL DIVISION

EASTMAN KODAK COMPANY

ROCHESTER · N · Y ·

FOR TOURISTS

PREMO Cameras and Premo Film Packs may be obtained of practically every photographic dealer in this country. They may be had also in any part of the world in most photographic establishments, and always at the following agencies :

LONDON — Kodak, Limited, Kingsway, W. C.; 60 Cheapside, E. C.; 115 Oxford Street, W.; 171-173 Regent Street, W.; 59 Brompton Road, S. W.; 40 Strand, W. C.; 1 and 2 Gracechurch St., E. C.

LIVERPOOL — Kodak, Limited, 96 Bold Street.

BIRMINGHAM — Kodak, Limited, 45 Corporation Street.

NEWCASTLE — Kodak, Limited, 34 Grainger Street.

DUBLIN — Kodak, Limited, 89 Grafton Street.

GLASGOW — Kodak, Limited, 72-74 Buchanan Street.

PARIS — Kodak, Société Anonyme Française, Avenue de l'Opera 5; Place Vendôme 4.

LYONS — Kodak, Société Anonyme Française, Rue de la Republique 26.

LAUSANNE — Kodak, Société Anonyme, Avenue du Tribunal Federal 13.

NICE — Kodak, Société Anonyme Française, Avenue de la Gare 34.

BERLIN — Kodak Gesellschaft m. b. H., Leipzigerstrasse 115-116; Unter den Linden 26.

BRUSSELS — Kodak, Limited, Rue de l'Ecuyer 36.

COPENHAGEN — Kodak Aktieselskab, Ostergade 1.

VIENNA — Kodak Gesellschaft, m. b. H., 1 Kärntnerstrasse 16.

ST. PETERSBURG — Kodak, Limited, Bolschaia Konnuschenaia 19.

MOSCOW — Kodak, Limited, Petrovka 15, 16.

MILAN — Kodak Societa Anonima, Corso Vittorio Emanuele 34.

ROME — Kodak Societa Anonima, Corso Umberto I. 399.

NAPLES — Kodak Societa Anonima, Via Roma 288.

VENICE — Kodak Societa Anonima, Piazza S. Marco 52.

BUDA PEST — Kodak társaság K. F. 4, Vaci-utca 9.

ALEXANDRIA — Kodak (Egypt) Societe Anonyme Rue Chérif Pacha 30.

CAIRO — Kodak (Egypt) S. A. Opera Square.

MELBOURNE — Kodak (Australasia) Ltd., 284 Collins Street.

SYDNEY — Kodak (Australasia) Ltd., 379 George Street.

BRISBANE — Kodak (Australasia) Ltd., 78 Queen Street.

ADELAIDE — Kodak (Australasia) Ltd., 97 Rundle Street.

WELLINGTON — Kodak (Australasia) Ltd., 9 Mercer Street.

T H E P R E M O I D E A

THE idea behind the Premo cameras, since they were first manufactured, over twenty-five years ago, has been to furnish cameras of absolute reliability, and at the same time so simple in operation as to make it as easy and convenient as possible for anyone to make pictures of the persons and things that interest him.

The first Premos were plate cameras, and from the very beginning of amateur photography, up to the present, the Premo cameras have been known as the very best, the actual standard in plate camera construction.

But the Premo idea did not end with the highest development of the plate camera. It extended itself into the film camera field, with the purpose of providing those who preferred the greater convenience, the lighter weight and other features offered in film photography, with Premos made upon that same first principle.

The Premo line, therefore, offers the amateur the choice of either a film or plate camera, backed by years of experience in camera making. And it goes even beyond this. With the introduction of the Premo Film Pack Adapter, it has become a simple matter to use either films or plates with equal facility in the *same* camera. Thus one who may be in doubt as to whether he should purchase a film or a plate camera, can settle the question instantly by getting a Premo which will enable him to use plates or film as the occasion may require.

With a Premo, anyone can make good pictures from the start. The instructions which come with each Premo camera are worded in the simplest language, giving complete directions for all branches of amateur photography. The cameras themselves are remarkably simple in construction.

Each Premo is fitted with the best shutter obtainable in its class and with a lens carefully tested for the work for which it is intended. The film used in the Premo Film Pack is from the same stock as the Eastman N. C.—the best in the world.

Premos will make as good pictures as can be had.

ROCHESTER OPTICAL DIVISION,

EASTMAN KODAK CO.

ROCHESTER, N. Y.

THE PREMO FILM PACK

IN our advertising, we often refer to Premo as being the smallest and lightest, the easiest to load and operate of all cameras. This is true, because the Premo Film Pack, with which most of our cameras are loaded, requires very little space when in use and itself is constructed upon such a simple, convenient principle.



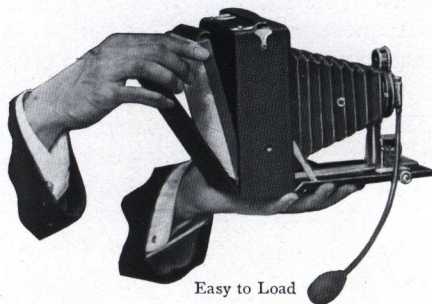
Packed flat, the Premo Film Pack can be loaded in Premo Film cameras by two operations. Just open back of camera and drop in pack—then close back and it's done. This is the easiest and quickest method of loading any camera.

To prepare for the first exposure, simply pull out from the pack the paper tab marked "Safety Cover." Then to change each film for successive exposures, merely pull out successive tabs. Upon pulling out the twelfth tab the pack is rendered light-tight, so that it may be safely removed in any light.

With these advantages of easy loading and operating, the Premo Film Pack has another most important one—the removal of one or more films for development at any time.

This feature is found in no other film system, and obviates the necessity of exposing all the films before any can be developed.

And development has been made very simple. As we have said, anyone who follows directions in our instruction books can make good exposures, and if the exposures are right, development, heretofore a bugbear to many amateurs, is certain with the Premo Film Pack Tank.



Easy to Load

All one has to do is to dissolve the developing powders in the tank, bring the solution to the proper temperature and put in the films. See pages 34-35.

THE PREMO ADAPTER

WITH the introduction of the Premo Film Pack it was found that a simple film pack holder or adapter, modeled upon the ordinary plate holder, would make it a simple matter to load any Premo plate camera with film packs.

The Premo Film Pack Adapter has the general size and appearance of a plate holder. But it has a hinged back which can be easily opened, the film pack dropped in place, back closed, and the adapter then loaded into the plate camera just as an ordinary plate holder is.

To make exposures, the slide is withdrawn, the "safety cover" pulled out and the film pack operated for successive exposures just as in film cameras.

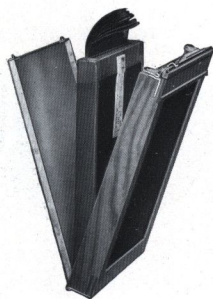
Then at any time the slide may be re-inserted, the adapter removed and the subject sharply focused on the ground glass by precisely the same method you would follow in using glass plates.

Thus a Premo plate camera will take films or plates with equal facility; it offers the daylight loading and other features of the Premo Film Pack, as well as every advantage of the ordinary focusing camera; and many of these Premos are as compact as purely film cameras.

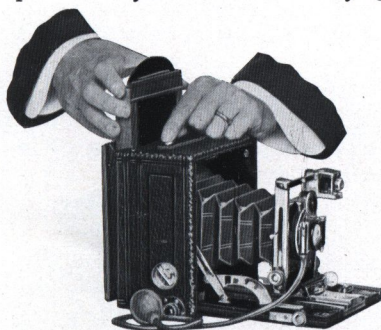
With the Premo Film Pack Adapter, also, it is an easy matter to make multiple pictures (two or more exposures) on one film.

This is done by manipulating the slide in connection with the film pack tab, and the procedure is fully explained in the Premo manuals.

For prices on Premo Film Packs and Adapters, see page 43.



Premo Film Pack Adapter



The Adapter is loaded just like a Plate Holder

SHUTTERS FOR PREMOS

KODAK BALL BEARING SHUTTER

This shutter works automatically and operates with remarkable smoothness and precision. The leaves are made in five segments, mounted entirely on ball bearings, and open and close in the form of a star, admitting a much greater amount of light in the same space of time than any other type of shutter. All except the No. 0 have variable indicated speeds of $\frac{1}{25}$, $\frac{1}{50}$ and $\frac{1}{100}$ second, operate for bulb or time exposures, and are fitted with indicator for registering each exposure as made. The No. 0 is graduated for speeds of $\frac{1}{25}$ and $\frac{1}{50}$, has no registering device and operates with finger release only.

The Kodak Ball Bearing Shutter is supplied with the Premoette Jr. No. 1 A, Film Premo No. 1, Pocket Premo C and Premo No. 8; the No. 0 size with Premoette Jr. No. 1.

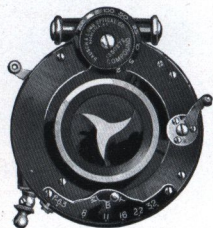


COMPOUND SHUTTER

The Compound Shutter is an automatic and setting shutter combined. Automatically, either time or bulb exposures may be made, while it may be set for speeds of from 1 to $\frac{1}{150}$, $\frac{1}{200}$ and $\frac{1}{250}$ second, according to size of shutter. The shutter leaves are formed of segments opening in star shape, giving even illumination over the entire plate the instant the exposure is started, and an iris diaphragm is supplied for stopping down. This is graduated in the *f* system.

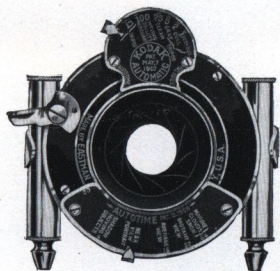
Case is made of aluminum, and accurate adjustments can be made with the shutter in any position. It may be operated by either bulb or finger release.

The Compound Shutter is regularly supplied on the Premoette Jr. Specials Nos. 1 and 1 A, Filmplate Premo Special and Six-Three Premo Cameras.



KODAK AUTOMATIC SHUTTER AND KODAK AUTOTIME SCALE

The Kodak Automatic Shutter is carefully adjusted for time, bulb and instantaneous exposures. It is also graduated for fractional parts of a second, and is unusually accurate.



This shutter is regularly fitted with the Kodak Autotime Scale and is supplied on the Filmplate and Premos Nos. 9 and 10.

The Kodak Autotime Scale greatly reduces the liability of error in exposure, as it automatically indicates the proper time and stop opening for subjects under any condition of out-

door photography. It is exceedingly simple to use. The speed indicator is merely set at the point on the scale indicating the kind of light prevailing and the diaphragm indicator at the point indicating the character of the subject.

These scales are also supplied at a nominal charge for the following shutters. They can be readily attached by any amateur in a few moments. In ordering always designate by Style letter as below.

- Style A. For use with Kodak Ball Bearing shutter, $2\frac{1}{2} \times 4\frac{1}{4}$ and $3\frac{1}{4} \times 4\frac{1}{4}$.
- Style AA. For use with Kodak Ball Bearing shutter, $3\frac{1}{4} \times 5\frac{1}{2}$ and 4×5 .
- Style B. For use with F. P. K. Automatic, $2\frac{1}{2} \times 4\frac{1}{4}$ and $3\frac{1}{4} \times 4\frac{1}{4}$, No. 1 S. V. (Blair or Premo) Automatic, or No. 1 B. & L. S. V. Automatic shutters.
- Style BB. For use with F. P. K. Automatic, $3\frac{1}{4} \times 5\frac{1}{2}$ and 4×5 , No. 2 S. V. (Blair or Premo) Automatic, or No. 2 B. & L. S. V. Automatic shutters.
- Style C. For use with Kodak Automatic shutter, $3\frac{1}{4} \times 4\frac{1}{4}$.
- Style CC. For use with Kodak Automatic shutter, $3\frac{1}{4} \times 5\frac{1}{2}$ and 4×5 .
- Style D. For use with B. & L. Automatic and Century Automatic shutters, $3\frac{1}{4} \times 4\frac{1}{4}$.
- Style DD. For use with B. & L. Automatic and Century Automatic shutters, $3\frac{1}{4} \times 5\frac{1}{2}$ and 4×5 .
- Style DDD. For use with B. & L. Automatic shutter, $4\frac{1}{4} \times 6\frac{1}{2}$.
- Style H. For use with No. 0 Compound shutter, $2\frac{1}{2} \times 4\frac{1}{4}$ and $3\frac{1}{4} \times 4\frac{1}{4}$.
- Style HH. For use with No. 1 Compound shutter, $3\frac{1}{4} \times 5\frac{1}{2}$ and 4×5 .
- Style HHH. For use with No. 2 Compound shutter, $4\frac{1}{4} \times 6\frac{1}{2}$ and 5×7 .

List of Prices

Any style up to H	\$1.00
Styles H, HH and HHH	1.50

PREMO JUNIOR CAMERAS



Specifications: *Capacity*—12 exposures without reloading. *Size of Camera*—No. 0, $2\frac{1}{4} \times 3\frac{5}{8} \times 5\frac{1}{2}$ in.; No. 1, $3\frac{1}{2} \times 4\frac{1}{2} \times 5\frac{3}{4}$ in.; No. 1A, $3\frac{1}{2} \times 5\frac{1}{2} \times 5\frac{3}{8}$ in.; No. 3, $4 \times 5\frac{1}{2} \times 5\frac{3}{4}$ in.; No. 4, $4\frac{3}{4} \times 6\frac{1}{4} \times 6\frac{1}{2}$ in. *Weight*—No. 0, 7 ounces; No. 1, 11 ounces; No. 1A, 14 ounces; No. 3, 20 ounces; No. 4, 25 ounces. *Shutters*—Rotary Automatic with diaphragm stops. *Lens*—No. 0, Meniscus; Nos. 1, 1A, 3 and 4, Meniscus Achromatic. *Finders*—Two. *Tripod Sockets*—No. 0, none; Nos. 1, 1A, 3 and 4, two.



Premo Jr. No. 0

List of Prices:

	No. 0	No. 1	No. 1A	No. 3	No. 4
Meniscus Lens,	$1\frac{3}{4} \times 2\frac{3}{8}$	$2\frac{1}{4} \times 3\frac{1}{4}$	$2\frac{1}{2} \times 4\frac{1}{4}$	$3\frac{1}{4} \times 4\frac{1}{4}$	4×5
Automatic					
Shutter . . .	\$1.50	\$2.00	\$3.00	\$4.00	\$5.00
Carrying Case .	.60	.75	.85	1.10	1.25
Premo Film Pack					
(12 exposures) .	.25	.40	.50	.70	.90
Premo Portrait					
Attachment .		.50	.50	.50	.50



PREMO JUNIOR CAMERAS

THE very simplest camera for making pictures is a camera of the box type. Such cameras require no focusing or estimating of distances, being fitted with fixed focus lenses, and as they do not have to be opened, are always ready for immediate action.

The Premo Juniors are cameras of this kind and they are even easier in operation than the usual camera of the box type, possessing, as they do, the remarkable simplicity of loading and operating provided by the Premo Film Pack.

To make a picture with one of these cameras is a matter of seconds only. The first step is to load the camera, and this is effected in any light by opening the back, dropping in Premo Film Pack and then closing the back.

Second, set the shutter for time or instantaneous exposure as required by the subject. This is accomplished by merely moving a lever up or down.

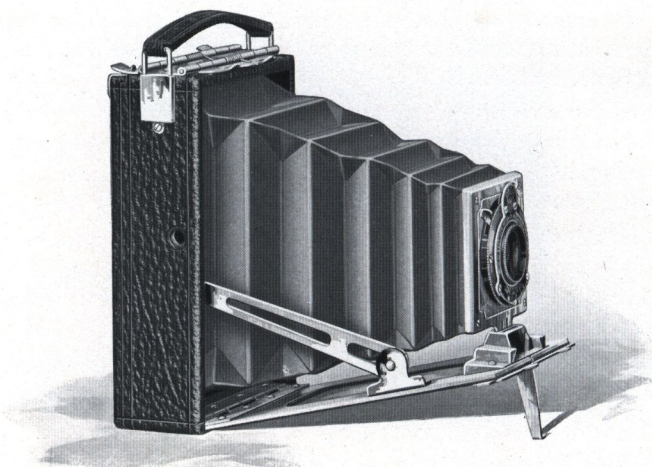
Then glance at the finder, which reflects the image on a reduced scale, just as it will appear in the finished picture, press a lever and the exposure is made. To change films for successive exposures, pull out successive film pack tabs as explained on page 4.

The Premo Juniors are particularly well adapted for the use of boys and girls, by reason of their low cost, substantial construction and simple operation. This does not mean that the camera is not suitable for older people, for there are many grown up amateurs who prefer cameras of this simple type, and are using Premo Juniors with marked success.

For all ordinary work, such as portraiture, snap shots in good light and average landscapes, they are capable of producing very good results. These cameras are all fitted with tested lenses, automatic shutters with diaphragm stops and horizontal and vertical finders. They are substantially made to withstand hard knocks, covered with imitation leather and are neat and attractive in appearance.

The Nos. 1, 1A, 3 and 4 are precisely alike, as shown by illustration, in all details excepting size. The No. 0 is somewhat different in construction, but works upon the same principles and makes equally good pictures in its size.

PREMOETTE JUNIOR



Specifications: Premoette Jr. No. 1. *Capacity*—12 film pack exposures without reloading. *Dimensions*— $1\frac{3}{8} \times 3\frac{1}{4} \times 4\frac{5}{8}$ in. *Weight*—11 ozs. *Lens*—Meniscus Achromatic. *Shutter*—Kodak Ball Bearing (see page 6). *Finder*—Direct view. *Tripod Socket*—One.



When fitted to Premoette Jr. bulb pump is removed.

Premoette Jr. No. 1A. *Capacity*—12 film pack exposures without reloading. *Dimensions*— $1\frac{3}{8} \times 3\frac{1}{4} \times 5\frac{3}{8}$ in. *Weight*—18 ozs. *Lens*—Meniscus Achromatic. *Shutter*—Kodak Ball Bearing (see page 6), but has no bulb, operating with finger release only. *Finder*—Brilliant, reversible, collapsible. *Tripod Sockets*—Two.

List of Prices:		No. 1	No. 1A
		$2\frac{1}{8} \times 3\frac{1}{4}$	$2\frac{1}{8} \times 4\frac{1}{4}$
	Premoette Jr. with Achromatic Lens and Kodak Ball Bearing Shutter . . .	\$5.00	\$ 8.00
	Ditto, with Planatograph Lens . . .	7.00	10.00
	Carrying Case	1.00	1.25
	Premo Film Pack (12 exposures)40	.50
	Premo Portrait Attachment50	.50



PREMOETTE JUNIOR

THE Premoette Jr. No. 1 had no sooner appeared last year than the orders began to pour in. Within two weeks the large stock which we had made up was gone and orders were coming in faster than ever. The Premoette department in our factory was enlarged and set in motion at full speed, and it hasn't stopped yet. Throughout the year, Premoettes were sent out just as fast as we could make them, and the demand keeps on growing.

A splendid tribute to a splendid camera, and yet a logical one, for the Premoette Jr. is sure to appeal to every amateur photographer — even to those who already have other cameras.

For the Premoette Jr. is but just a trifle larger than the picture it makes. Upon seeing it, you would hardly think it possible that so small a camera could make such comparatively large pictures. It can be easily carried in any pocket or in a lady's hand-bag. It is made of aluminum, covered with genuine grain leather, and handsomely finished in every detail.

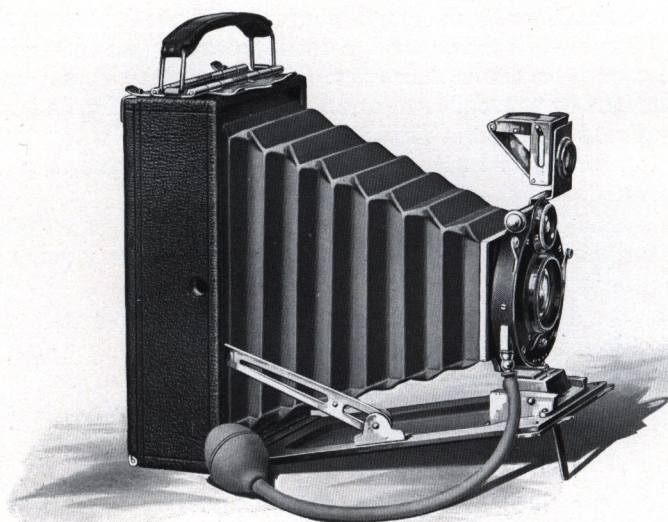
With this compact, substantial construction is combined that simplicity of loading and operating possible only with a Premo Film Pack camera and an optical equipment which cannot be excelled in its particular grade.

The shutter is the smoothly working, precise Kodak Ball Bearing, and the cameras are offered with either meniscus achromatic or double Plantograph lenses, all carefully tested.

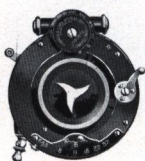
The Premoette Jr. No. 1 is the original model made for $2\frac{1}{4} \times 3\frac{3}{4}$ pictures, while the No. 1A, introduced with this catalogue, offers all the Premoette Jr. advantages in a camera for the popular $2\frac{1}{2} \times 4\frac{1}{4}$ proportion; a most artistic size. They are alike in every other respect excepting that the No. 1 is fitted with direct view finder while the 1A has the collapsible Premo finder.

As previously suggested, many amateurs who have larger cameras are using Premoette Jrs., for they can be easily carried where oftentimes the larger camera might be inconvenient, and where larger pictures are wanted, they can readily be obtained from Premoette Jr. negatives by the simple process of enlargement. Any amateur can enlarge his own negatives by use of the inexpensive enlarging camera described on page 29 or his finisher will do it for him.

PREMOETTE JR. SPECIAL



Specifications: Premoette Jr. No. 1 Special. Capacity—12 $2\frac{1}{4} \times 3\frac{1}{4}$ film pack exposures without reloading. Dimensions— $1\frac{1}{2} \times 3 \times 4\frac{3}{4}$ in. Weight—13 ozs. Lens—Zeiss Kodak Anastigmat f.6.3. Shutter—Compound, highest speed $\frac{1}{250}$ second. Finder—Brilliant, reversible, collapsible. Tripod Socket—One.



Premoette Jr. No. 1A Special. Capacity—12 $2\frac{1}{2} \times 4\frac{1}{4}$ Premo Film Pack exposures without reloading. Dimensions— $1\frac{3}{4} \times 3\frac{1}{4} \times 5\frac{3}{4}$ in. Weight—19 ozs. Lens—Zeiss Kodak Anastigmat f.6.3. Shutter—Compound, highest speed $\frac{1}{250}$ second. Finder—Reversible, brilliant, collapsible. Tripod Sockets—Two.

List of Prices: Premoette Jr. Special with Zeiss Kodak Anastigmat Lens and Compound Shutter, highest speed $\frac{1}{250}$ second

	No. 1	No. 1A
$2\frac{1}{4} \times 3\frac{1}{4}$		$2\frac{1}{2} \times 4\frac{1}{4}$
second	\$40.00	\$45.00
Grain Leather Carrying Case . . .	1.50	1.75
Premo Film Pack (12 exposures) . .	.40	.50
Premo Portrait Attachment50	.50



PREMOETTE JR. SPECIAL

SO compact, so generally desirable is the Premoette Jr. that there are many amateurs among the more serious, particular workers, who have wished for a camera of the same type with the very maximum of photographic efficiency.

For the average amateur the regular Premoette Junior will be found eminently satisfactory, but for those who insist upon the best to be had, who demand a camera capable of making good pictures under all conditions where pictures could possibly be made, the Premoette Jr. Special is a revelation.

Here is a camera with the light weight and compactness, the ease of loading and operating of the original Premoette Jr., but with an equipment which places it on a par in capabilities, with the largest, most expensive amateur cameras made.

It is fitted with the Compound shutter, attaining a maximum speed of $\frac{1}{250}$ of a second, and the Zeiss Kodak Anastigmat lens working at the full aperture — $f.6.3$. This lens was made expressly for hand camera work and combines depth, definition and speed to a remarkable degree. This equipment enables one to work under adverse conditions that the ordinarily equipped camera could not meet. For instance, snap shot work in dull lights, fast indoor portraiture, and the like. And the remarkable sharpness and depth of the negatives make them suitable for enlarging up to any size desired.

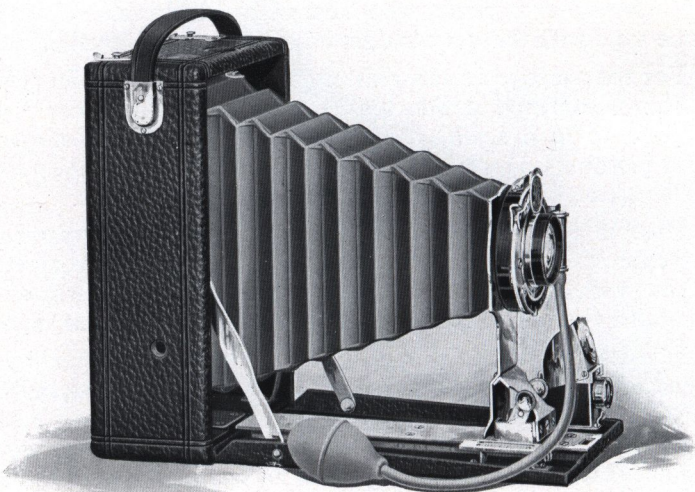
Either size can be carried in any pocket or in a lady's hand-bag. Thus, however cramped for room, one may be certain he can take along a Premoette Jr., and make as good pictures of anything he cares about, as can be made with any camera.

Aside from the difference in size, the two models are practically identical. Focusing is provided for by a series of three focusing slots in which the standard is inserted as occasion requires. The focusing block on the No. 1 folds over to permit closing the camera; in the No. 1A this is not necessary.

In keeping with its high grade equipment, we have finished this camera in the best possible manner. It is covered with genuine Persian Morocco, and the bellows is of the finest quality black leather, giving it a rich, attractive appearance.

In a word, this is the finest, most capable, handsomest small camera you ever saw—a marvel of compactness and efficiency.

F I L M P R E M O No. 1



Specifications: Capacity—12 film exposures. Box—Seasoned wood. Bed—Aluminum. Dimensions— $3\frac{1}{4} \times 4\frac{1}{4}$, $2\frac{1}{4} \times 4 \times 5\frac{1}{2}$ in.; 3A ($3\frac{1}{4} \times 5\frac{1}{2}$), $2\frac{3}{8} \times 4\frac{3}{8} \times 7\frac{1}{8}$ in.; 4×5 , $2\frac{1}{4} \times 4\frac{3}{4} \times 6$ in. Weight— $3\frac{1}{4} \times 4\frac{1}{4}$, 19 ounces; 3A ($3\frac{1}{4} \times 5\frac{1}{2}$), 29 ounces; 4×5 , 25 ounces. Lens—Planatograph. Shutter—Kodak Ball Bearing (see page 6). Tripod Sockets—Two. Finder—Reversible brilliant. Automatic Standard Clamp.



List of Prices: Film Premo No. 1, with Planatograph Lens and



Kodak Ball Bearing Shutter	$3\frac{1}{4} \times 4\frac{1}{4}$	3A ($3\frac{1}{4} \times 5\frac{1}{2}$)	4×5
	\$10.00	\$12.50	\$12.50
Sole Leather Carrying Case	1.50	2.00	2.00
Kodak Autotime Scale	1.00	1.00	1.00
Premo Film Pack (12 exposures)70	.80	.90
Premo Portrait Attachment50	.50	.50

F I L M P R E M O N o . 1

THIRTY years of experience are behind the Film Premo No. 1, with the idea of providing an ideal camera of the purely film type for the three sizes of amateur pictures which are generally recognized as the standard sizes.

It is designed to be as convenient and easy of manipulation as possible, and without reference to the requirements of the specialists, is fitted only with the simple adjustments sufficient to enable the average photographer, whether experienced or not, to secure good pictures under all ordinary conditions where he would care to use a camera.

Working with this idea in mind, we are able to offer these cameras not only at moderate prices; but for compactness and light weight, for ease of loading and unloading, the Film Premos have a considerable margin over any other type of cameras, as may be easily verified by comparative weights and dimensions and investigation of the Premo Film Pack system used in this camera. (See page 4.)

Furthermore, in designing the Film Premo No. 1, we have not overlooked the fact that, however convenient, the most important consideration in any camera is the quality of its results. And quality is dependent upon proper construction, lens, shutter and film.

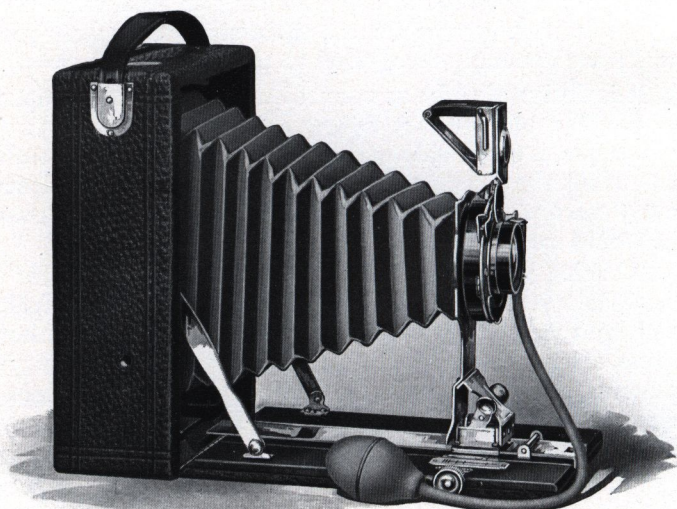
The shutter of the Film Premo No. 1 is the Kodak Ball-Bearing—the finest type of the single valve shutter, and the regular lens is our celebrated Planatograph, each one thoroughly tested. This equipment is the best to be had outside of the anastigmats and is amply efficient for the general run of amateur photography.

Finally, the film used in the Premo Film Pack is from the same stock as the Eastman N. C.—the best in the world.

Particular attention is called to the 3A Film Premo No. 1 as a specially compact, moderate priced camera for the popular post card size, and any Film Premo No. 1, fitted with Premo Portrait Attachment, makes an excellent outfit for home portraiture.

Film Premos No. 1 are very attractive in appearance; they are made of seasoned wood, with bed and back panel of aluminum, covered with seal grain leather, and metal parts are beautifully nickeled.

POCKET PREMO C



Specifications: *Capacity*—12 film or 2 plate exposures. *Box*—Mahogany. *Bed*—Mahogany, with rack and pinion for focusing. *Finder*—Reversible, collapsible brilliant. *Tripod Sockets*—Two. *Lens*—Planatograph. *Shutter*—Kodak Ball Bearing (see page 6). *Dimensions*— $3\frac{1}{4} \times 4\frac{1}{4}$, $2\frac{1}{8} \times 4\frac{1}{4} \times 5\frac{1}{2}$ in.; 3A ($3\frac{1}{4} \times 5\frac{1}{2}$), $2\frac{1}{4} \times 5 \times 7\frac{1}{8}$ in. *Weight*— $3\frac{1}{4} \times 4\frac{1}{4}$, 21 ozs.; 3A ($3\frac{1}{4} \times 5\frac{1}{2}$), 32 ozs. Automatic Standard Clamp.



List of Prices: Pocket Premo C with Planatograph Lens, Kodak

Ball Bearing Shutter and Plate	$3\frac{1}{4} \times 4\frac{1}{4}$	3A ($3\frac{1}{4} \times 5\frac{1}{2}$)
Holder	\$12.00	\$15.00
Double Plate Holder	1.00	1.00
Sole Leather Carrying Case	1.75	2.00
Kodak Autotime Scale	1.00	1.00
Premo Film Pack Adapter	1.00	1.50
Premo Film Pack (12 exposures)70	.80
Premo Portrait Attachment50	.50



P O C K E T P R E M O C

IN selecting his photographic outfit, the amateur is often undecided as to whether he should get a film or a plate camera. There is no question of the greater convenience of the daylight loading film camera, while the plate camera offers the ground glass focusing advantage so desirable to many.

The Pocket Premo C will easily solve such a problem, for it permits the use of daylight loading films or plates at the choice of the operator. One can be used just as easily as the other, plates being loaded by means of an ordinary double plate holder and films in the Premo Film Pack Adapter. (See page 5.) And these advantages are offered in a camera which is even lighter and more compact than the average purely film camera, and which is so simple to operate that anyone can make good pictures with a Pocket Premo C without any previous experience whatever.

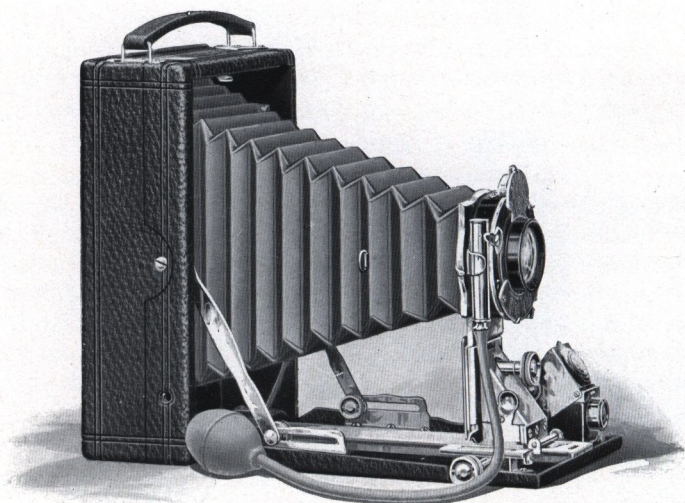
To make focusing easy a rack and pinion focusing attachment is provided on the bed, while a reversible, brilliant finder and focusing scale is furnished for use in snap shot work or wherever the ground glass is not used, for of course you don't have to focus on the ground glass unless you want to. For convenience in making time exposures two tripod sockets are supplied.

The Pocket Premo C offers the same assurance of quality pictures as does the Film Premo No. 1, described on the previous page, being fitted with the same type of Kodak Ball Bearing shutter and Planatograph lens. The shutter works on ball bearings and its leaves opening in the shape of a star admit much more light in a given time than does the ordinary type of shutter. This feature makes the Pocket Premo C very effective for snap shot work.

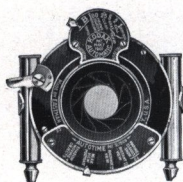
For the popular post card size, the 3A Pocket Premo C makes an outfit of unusual scope and capabilities at a moderate price.

The camera is handsomely finished, covering is genuine leather and metal parts are nicked. For one who wishes to get a very portable and reliable outfit, suitable for all kinds of general amateur work, at a small outlay, the Pocket Premo C is an exceptional value.

FILMPLATE PREMO



Specifications: Capacity—12 film or 2 plate exposures. *Box*—Cherry. *Bed*—Aluminum. Rack and pinion for fine focusing. *Front*—Rising and sliding. *Finder*—Reversible brilliant. *Tripod Sockets*—Two. *Lens*—Planatograph. *Shutter*—Kodak Automatic with Autotime Scale (see page 7). *Dimensions*— $3\frac{1}{4} \times 4\frac{1}{4}$, $2\frac{1}{4} \times 4\frac{1}{8} \times 5\frac{3}{8}$ in.; 3A ($3\frac{1}{4} \times 5\frac{1}{2}$), $2\frac{3}{8} \times 4\frac{3}{4} \times 7\frac{1}{8}$ in.; 4×5 , $2\frac{1}{4} \times 4\frac{1}{8} \times 6\frac{1}{8}$ in.; 5×7 , $2\frac{5}{8} \times 6 \times 8\frac{3}{8}$ in. *Weight*— $3\frac{1}{4} \times 4\frac{1}{4}$, 30 ozs.; 3A ($3\frac{1}{4} \times 5\frac{1}{2}$), 37 ozs.; 4×5 , 33 ozs.; 5×7 , 56 oz. Automatic Standard Clamp.



List of Prices: Filmplate Premo with Planatograph Lens, Kodak Auto. Shutter, Autotime Scale, Plate Holder and Film Pack



	$3\frac{1}{4} \times 4\frac{1}{4}$	3A ($3\frac{1}{4} \times 5\frac{1}{2}$)	4×5	5×7
Adapter . . .	\$22.50	\$25.00	\$25.00	\$30.00
Carrying Case . .	1.75	2.25	2.25	3.00
Autotime Scale .	1.00	1.00	1.00	
Premo Film Pack .	.70	.80	.90	1.60
Portrait Attachment50	.50	.50	.50

F I L M P L A T E P R E M O

THE Filmplate Premo takes films or plates with equal facility; it will do all that the Pocket Premo C will in the same simple way. But it has greater capabilities, being fully equipped for more serious and more particular work.

With rack and pinion for focusing, it is fitted also with both rising and sliding front and with swing bed for use in decreasing foreground without tipping the camera and consequent distortion. This is a valuable feature in making pictures of high buildings and the like.

The shutter is the Kodak Automatic, which works with bulb or finger release for time, bulb, instantaneous, and retarded speeds of from 1 second to $\frac{1}{50}$ second. It is also supplied with Kodak Autotime scale. Under every possible outdoor light condition this scale shows at a glance just where to set diaphragm and speed lever to get a perfectly timed exposure. The lens is the Planatograph, the best obtainable aside from the anastigmats, and each lens is carefully tested before and after being fitted to the camera.

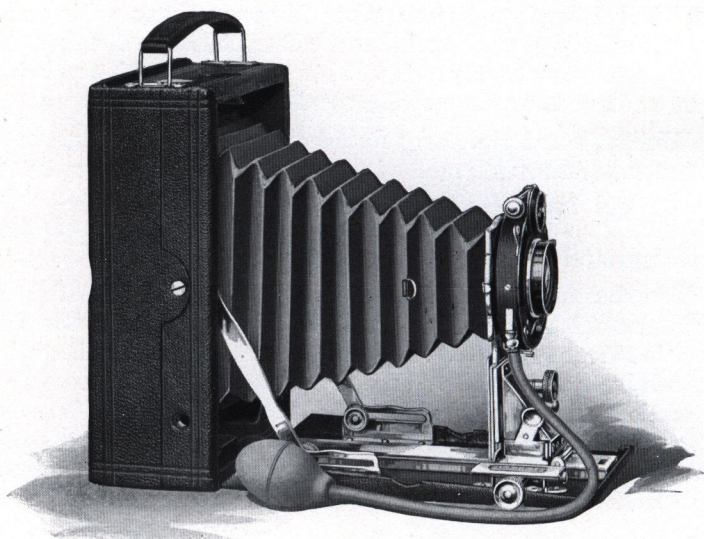
With accurate focusing scale and brilliant finder, the Filmplate Premo is a splendid snap shot instrument. Whereas, for particular work, the ground glass is instantly available for composition or focusing, whether films or plates are being used.

And all these advantages are combined in a camera which can be carried around as easily as the most portable film camera, for the Filmplate Premo is fully as compact as the ordinary camera taking films exclusively.

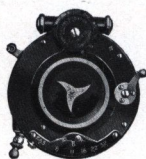
The 3A size is especially suitable for post card work, for bust and full length portraiture and for artistic landscape compositions, while to those who like large size pictures the 5 x 7 is strongly recommended for its extreme lightness and compactness as compared with any other 5 x 7 camera on the market, designed exclusively for either plates or films.

The Filmplate Premo is made in the most careful manner of the best of materials. The box is made of thoroughly seasoned wood, front bed of aluminum, all covered with selected leather of beautiful seal grain. All metal parts are highly nickered, the bellows is of black leather, and the general appearance of the camera is most striking.

FILMPLATE PREMO SPECIAL



Specifications: Capacity—12 film or 2 plate exposures. *Box*—Seasoned wood. *Bed*—Aluminum. Rack and pinion for fine focusing. *Front*—Rising and sliding. *Finder*—Brilliant reversible. *Tripod Sockets*—Two. *Lens*—Zeiss Kodak Anastigmat *f*.6.3. *Shutter*—Compound. *Dimensions*— $3\frac{1}{4} \times 4\frac{1}{4}$, $2\frac{1}{4} \times 4\frac{1}{8} \times 5\frac{3}{8}$ in.; $3\frac{1}{4} \times 5\frac{1}{2}$, $2\frac{3}{8} \times 4\frac{1}{8} \times 7\frac{1}{8}$ in.; 4×5 , $2\frac{1}{4} \times 4\frac{1}{8} \times 6\frac{1}{8}$ in.; 5×7 , $2\frac{3}{8} \times 6 \times 8\frac{3}{8}$ in. *Weight*— $3\frac{1}{4} \times 4\frac{1}{4}$, 26 ozs.; $3\frac{1}{4} \times 5\frac{1}{2}$, 36 ozs.; 4×5 , $28\frac{1}{2}$ ozs.; 5×7 , 48 ozs.



List of Prices: Filmplate Premo Special with Zeiss Kodak Anastigmat *f*.6.3 and Compound Shutter, Film Pack Adapter and Plate Holder . $3\frac{1}{4} \times 4\frac{1}{4}$ $3A(3\frac{1}{4} \times 5\frac{1}{2})$ 4×5 5×7
 . \$54.00 \$65.00 \$65.00 \$88.00



Do, Cooke Ser. III A, <i>f</i> .6.5 Lens	67.00	74.00	74.00	101.00
Do, B. & L.-Zeiss Tessar Ser. II B, <i>f</i> .6.3 Lens	66.50	80.50	80.50	98.50
Case, velvet lined	2.75	3.00	3.00	4.00
Autotime Scale	1.50	1.50	1.50	1.50
Premo Film Pack	.70	.80	.90	1.60

FILMPLATE PREMO *SPECIAL*

MADE for those who want the best to be had, the Filmplate Premo Special is a remarkable camera. It is designed upon the idea of providing as compact and light weight and convenient a camera as possible for the standard size of amateur pictures, and a camera which must be so thoroughly equipped as to make good pictures under all conditions of amateur photography where pictures could possibly be made, aside from ultra rapid focal plane photography.

Such a proposition meant the fitting of every desirable mechanical convenience, the selection of a fast, fully corrected lens for work under unfavorable light conditions, and a high speed shutter for making pictures of rapidly moving objects.

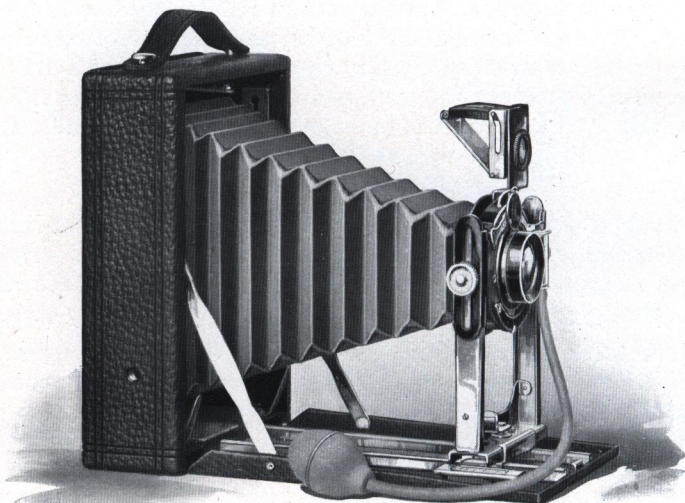
All these features are combined in the Filmplate Premo Special and we have modeled it upon the Filmplate Premo for three reasons: First, because of its ground glass focusing feature, an especially valuable consideration where one has a fine anastigmat lens. Second, because it takes films or plates at the choice of the operator or as the occasion may require. Last, because the camera is so light, compact, and convenient to operate.

The camera is fitted with the Zeiss Kodak Anastigmat, the lens made expressly for hand camera work, and the Compound shutter, which attains a speed of $\frac{1}{250}$ second in the $3\frac{1}{4} \times 4\frac{1}{4}$ size, $\frac{1}{200}$ second in the $3\frac{1}{4} \times 5\frac{1}{2}$ and 4×5 sizes, and $\frac{1}{150}$ second in the 5×7 size, working also, of course, for time and bulb. This equipment cannot be surpassed. A rising and sliding front, swing bed, reversible finder, two tripod sockets, and rack and pinion focusing attachment are provided.

In keeping with the high grade of work for which this camera is designed, we have constructed and finished it in the best possible manner. The covering is a rich black morocco, the bellows black leather, and metal parts are handsomely nicked, producing a most attractive combination. Particular attention is called to the 3A size for its all-around popularity, and to the 5×7 for its unusual compactness for a 5×7 camera of its great capabilities.

The Filmplate Premo Special is a camera par excellent for anastigmat lens workers and those who insist upon the best to be had.

P R E M O N U M B E R 8



Specifications: *Capacity*—12 film or 2 plate exposures. *Box*—Kiln-dried wood, covered with leather. *Standard*—Made of metal, with rising and falling front. *Carrying Case*—Imitation leather, with compartments for holders. *Finder*—Reversible brilliant, collapsible. *Tripod Sockets*—Two. *Lens*—Planatograph. *Shutter*—Kodak Ball Bearing (see page 6). *Dimensions*— $3\frac{1}{4} \times 5\frac{1}{2}$, $2 \times 5 \times 7\frac{1}{4}$ in.; 4×5 , $2 \times 5\frac{1}{4} \times 6\frac{1}{2}$ in.; 5×7 , $2\frac{1}{4} \times 6\frac{1}{2} \times 8\frac{1}{2}$ in. *Weight*— $3\frac{1}{4} \times 5\frac{1}{2}$, 34 ozs.; 4×5 , 30 ozs.; 5×7 , 42 ozs.



List of Prices: Premo No. 8, with Planatograph Lens, Kodak

Ball Bearing Shutter, Carrying Case and Plate Holder	4x5	3A($3\frac{1}{4} \times 5\frac{1}{2}$)	5x7
	\$12.00	\$14.00	\$18.00
Kodak Autotime Scale . . .	1.00	1.00	1.00
Premo Film Pack Adapter . . .	1.50	1.50	2.50
Premo Film Pack (12 exposures)90	.80	1.60
Premo Portrait Attachment50	.50	.50



P R E M O N U M B E R 8

IN the plate camera field Premos have always been preeminent in quality and dependability from the very beginning of amateur photography. They have been manufactured for over twenty-five years, upon the idea of giving the customer the very best possible camera for the price.

So many years of experience and experimentation carried with it a constant development of new ideas and improvements which were added to the Premo line year after year.

This year a great change has been made. Instead of adding improvements to existing models, we have replaced the former plate Premos with a line of new Premo plate cameras incorporating every improvement, every patented Premo feature, and all the knowledge of the needs of the amateur, developed in the years of experience in making Premos.

The Premo No. 8, the first of these new models, is designed for those who want a convenient, dependable plate camera at a moderate price.

It is made of seasoned wood, with front bed of aluminum and metal runways, making an instrument of unusual compactness for a plate camera.

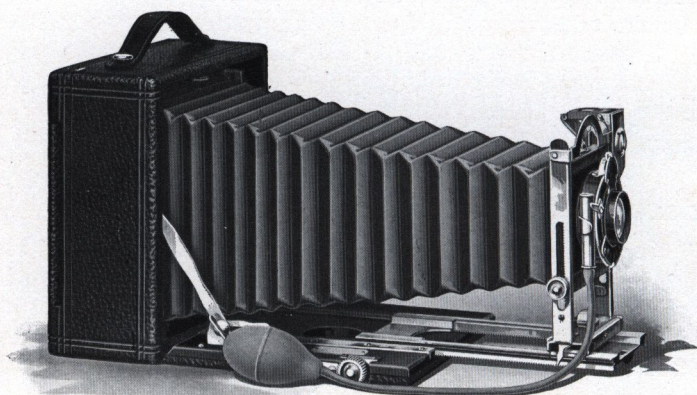
The bed and box of the Premo No. 8 are covered with black leather, the bellows is black and the metal parts being finished in nickel, give the camera a very neat, attractive appearance.

The standard is made of metal and is very rigid, a rising and falling front is supplied and the finder is of the new Premo collapsible type.

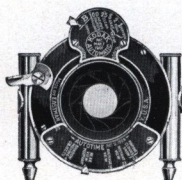
The camera is equipped with the Kodak Ball Bearing shutter and our celebrated Planatograph lens—the best obtainable aside from the anastigmats.

This model of course is provided with a ground glass for sharp focusing, and while it is intended primarily for plates, it can be loaded with films just as easily. By getting a Premo Film Pack Adapter, it can be converted into a compact, daylight loading film camera, perfectly suitable for the vacationist or for any occasion where the light weight and greater convenience of films would be desirable. It is really one camera which offers the advantage of two.

P R E M O N U M B E R 9



Specifications: *Capacity*—12 film or 2 plate exposures. *Box*—Kiln-dried wood, covered with fine grain leather. *Bed*—Hand polished wood, finished in black, and supplied with rack and pinion for fine focusing, and swing arrangement. *Back*—Spring catch, reversible. *Standard*—Made of metal, with rising and falling front. *Finder*—Brilliant reversible, collapsible. *Tripod Socket*—One. *Lens*—Planatograph. *Shutter*—Kodak Automatic (see page 7). *Carrying Case*—Sole leather, with compartments for holders. *Bellows*—Black leather; draw, $3\frac{1}{4} \times 5\frac{1}{2}$, 13 in.; 4×5 , 13 in.; 5×7 , $15\frac{1}{4}$ in. *Dimensions*— $3\frac{1}{4} \times 5\frac{1}{2}$, $3 \times 7 \times 7$ in.; 4×5 , $3 \times 7 \times 7$ in.; 5×7 , $2\frac{7}{8} \times 8\frac{1}{4} \times 8\frac{1}{4}$ in. *Weight*— $3\frac{1}{4} \times 5\frac{1}{2}$, 63 ozs.; 4×5 , 63 ozs.; 5×7 , 76 ozs.



List of Prices: Premo No. 9, with Planatograph Lens, Kodak Automatic Shutter, Carrying Case and Plate Holder . . \$28.00 \$28.00 \$33.00



Kodak Autotime Scale . .	1.00	1.00	1.00
Premo Film Pack Adapter .	1.50	1.50	2.50
Premo Film Pack (12 exposures)90	.80	1.60
Premo Portrait Attachment .	.50	.50	.50

P R E M O N U M B E R 9

THIS splendid new Premo is designed for the amateur who wishes an instrument of very wide scope. With its complete equipment and accurate, convenient mechanical adjustments, it is a camera never before approached in plate camera construction, at the price.

The Premo No. 9 is fitted with the new Premo reversible back. This is the simplest back to reverse ever offered, for with its patented spring lug construction, it may be instantly removed and reversed without any tendency to stick or bind.

The bellows is of black leather and has sufficient draw to permit the use of the single lens combination or a telephoto attachment of several magnifications. The extension plate is actuated by rack and pinion working with exceptional smoothness and provided with a simple locking device.

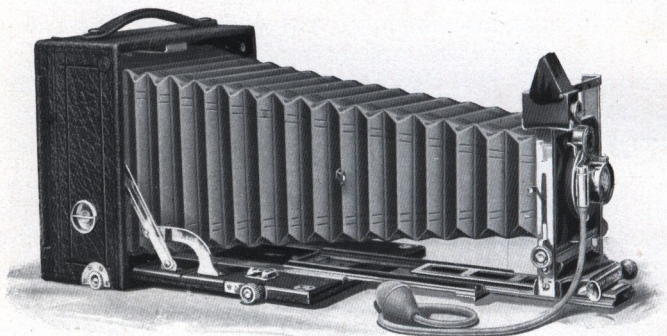
The standard is constructed of metal, it is very rigid, and incorporates a rising and falling front of great latitude. This in connection with the swing bed construction makes it an easy matter to take pictures of tall buildings, and the like, without tipping the camera, with its attendant distortion. The lens board is removable and the finder is the new Premo collapsible brilliant.

The instrument is of the most substantial construction, it is covered with selected leather of beautiful grain and is finished in the most careful manner. The bellows is of black leather, the bed is finished in black, hand polished, and the metal parts are heavily nicked.

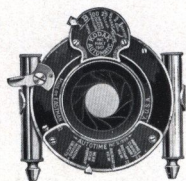
The regular lens and shutter equipment comprises the Kodak Automatic shutter and Autotime scale and the Planatograph lens—a perfectly satisfactory equipment for everyday amateur photography. The single combination of the lens will produce sharp, clear pictures of objects at a distance double this size made with the complete lens.

Like the Premo No. 8, this model is primarily intended for plates, but it can be easily converted into a daylight loading film camera by use of the Premo Film Pack Adapter. It offers the important advantage of ground glass focusing with either medium, but is fitted with an accurate focusing scale for snap shot work or for any occasion when one does not care to use the ground glass.

P R E M O N U M B E R 1 0



Specifications: *Capacity*—12 film or 2 plate exposures. *Box*—Mahogany, leather covered. *Bed*—Mahogany, with highly polished black finish and with triple extension runway. *Back*—Spring catch, reversible. *Swing*—Vertical; rack and pinion actuated, with locking device. *Front*—Rising and falling; rack and pinion actuated, with locking device. *Lens Board*—Removable; size, $3\frac{1}{2} \times 3\frac{1}{2}$ in. *Finder*—Brilliant, reversible. *Tripod Sockets*—Two. *Lens*—Planatograph. *Shutter*—Kodak Automatic with Autotime Scale (see page 7). *Carrying Case*—Sole leather, plush lined, with compartment for holders. *Bellows*—Black leather; draw, 19 in. *Dimensions*— $4 \times 8\frac{1}{2} \times 8\frac{1}{2}$ in. *Weight*— 5×7 , $5\frac{1}{2}$ lbs. Automatic Standard Clamp.



List of Prices:

Premo No. 10, with Planatograph Lens and Kodak Auto. Shutter with Autotime Scale, Carrying Case and Plate Holder	5×7 \$ 60.00
With Zeiss Kodak Anastigmat Lens <i>f</i> .6.3 and Kodak Auto. Shutter	99.50
Ditto, with Compound Shutter	110.05
With B. & L.-Zeiss Protar VIIa Lens and Auto. Shutter	133.00
Ditto, with Compound Shutter	143.55
Premo Film Pack Adapter	2.50
Premo Film Pack	1.60
Kodak Autotime Scale (Regular equipment)	1.00



P R E M O N U M B E R 1 0

DESIGNED to meet the requirements of the most advanced photographer and of the specialist in photographic work, the Premo No. 10 is equipped with every known adjustment desirable in a hand camera for making pictures under all conditions.

The bellows is of such length as to readily accommodate the single combinations of any lens system, and also to meet the capacity requirements of telephoto lenses of the highest magnifications. This feature is also a valuable one in the processes of enlarging, copying and portraiture.

Provision is made for the use of lenses of the widest angle. For this purpose, it is necessary only to unclasp the two supplementary side arms, which drop the bed down on a hinge, removing it from the path of the shortest focus lens. Then a short supplementary bed, carried conveniently at the top of the camera when not in use, is substituted for the regular bed, affording easy focusing facilities.

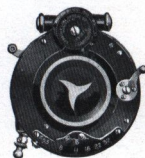
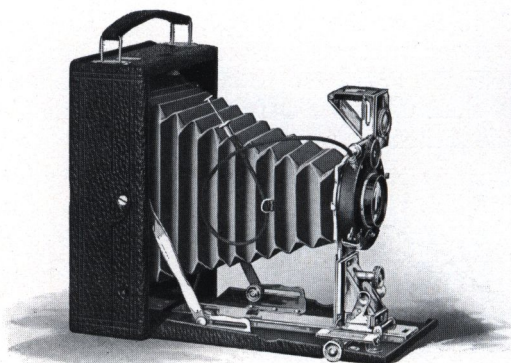
The movable extensions are constructed entirely of metal, are actuated by a single pinion and attached to the wooden bed by metal angle pieces, making the operation impervious to changing atmospheric conditions. The swing back is actuated by rack and pinion, with locking device, as is also the rising and falling front. The standard clamp is automatic.

The camera is regularly fitted with the Planatograph lens—the best obtainable aside from the anastigmats, but it is constructed with the view of accommodating anastigmat lenses of any kind when desired.

The finish and general workmanship of the instrument must be seen to be appreciated. The shutter and all metal parts are highly nicked and the covering is of the best leather, especially selected for its beautiful grain. The wood is mahogany with hand polished black finish. The carrying case is of sole leather, lined with purple velvet.

With all these advantages the Premo No. 10 can be successfully used even by the beginner. Its special features do not have to be reckoned with excepting when needed, and the Premo adapter will convert it at any time into a daylight loading film camera. The camera is made in the 5 x 7 size only.

SIX-THREE PREMOS



AMONG amateur photographers, in the past few years, there has been a growing appreciation of and a growing demand for anastigmat lens equipments. The Six-Three Premos are designed to meet this demand—to supply absolutely reliable cameras with every anastigmat advantage, at the very minimum of expense.

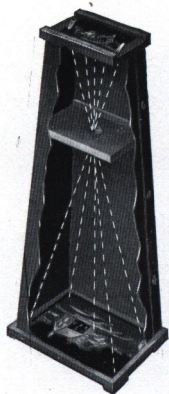
Taking as a basis the regular Premo models suitable for this purpose, we have simply replaced the R. R. lens and automatic shutter with the Compound shutter and a new anastigmat lens, called the Cooke Kodak Anastigmat. This lens has been specially designed for this particular use by the makers of the well-known Cooke Anastigmat lenses. It is an anastigmat of the very first quality, fully corrected for definition and flatness of field, and working at a speed of $f.6.3$. The shutter is the regular Compound, but operated with antinous release instead of bulb and tube. For details merely refer to detailed specifications of the regular models. The illustration shows the Six-Three Filmplate Premo.

List of Prices

Six-Three Premoette Jr. No. 1A, Cooke Kodak Anastigmat lens $f.6.3$, and Compound shutter	\$35.00
Six-Three Filmplate Premo, $3\frac{1}{4} \times 4\frac{1}{4}$, equipped as above	42.00
Do, 3A ($3\frac{1}{4} \times 5\frac{1}{2}$) or 4×5	50.00
Six-Three Premo No. 9, 3A ($3\frac{1}{4} \times 5\frac{1}{2}$) or 4×5 , equipped as above	53.00

For prices on carrying cases, films, etc., see price list of corresponding regular models.

BROWNIE ENLARGING CAMERA



Those who use Premo Cameras up to and including the 4 x 5 size will find that with one of these cameras it's just as easy to make first-class enlargements as it is to print on Velox paper. In fact, the two processes are very much the same excepting that, in ordinary printing, the negative and paper are in close contact, while in enlarging, the paper is at some distance from the negative, with a lens in between. The Brownie Enlarging Camera consists of a light-tight cone with attachments to hold a negative at the small end, and a sheet of Bromide or Velox paper at the other. They are collapsible.

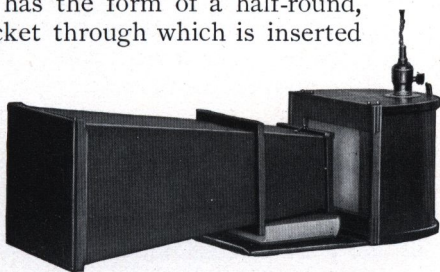
No. 2 Brownie Enlarging Camera, for 5 x 7 enlargements from 2½ x 3¼ negatives	\$2.00
No. 3 Ditto, for 6½ x 8½ enlargements from 3¼ x 4¼ negatives	3 00
No. 4 Ditto, for 8 x 10 enlargements from 4 x 5 negatives (will also take 3½ x 5½ negatives)	4.00

BROWNIE ILLUMINATOR

A very convenient device, providing a strong, even light by which to print with Brownie Enlarging Camera. It is collapsible, but when set up, has the form of a half-round, light-proof box with socket through which is inserted an electric light bulb.

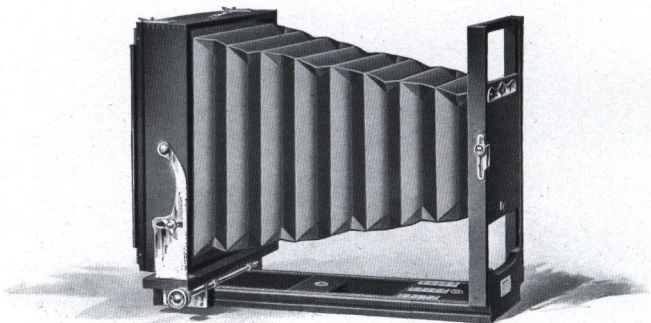
The inner walls of this box are white and act as a splendid reflector when the light is turned on. At the end is a ground glass, which diffuses the

light, so that by placing negative end of the enlarging camera in contact with this glass and turning on the electricity, an excellent steady printing light is obtained. After the exposure is completed, the illuminator can be converted into a perfect lamp for the developing of the paper.



Brownie Enlarging Camera Illuminator	\$3.00
--	--------

T H E R . O . C . V I E W



AN inexpensive, reliable view camera for those who do not require extra long bellows capacity. It is especially adapted for interior work as it focuses from the rear only, and the back may be moved as close to the front as desired so that extreme wide angle lenses may be used.

The front board is so wide that stereoscopic lenses may be used, and the standard is strong and rigid, affording a safe support for the heaviest lenses.

The back is supplied with horizontal and vertical cut out boards, so that four pictures may be made on one plate if desired. Vertical and horizontal swings, rising and falling front and reversible back are provided. The camera is strongly built for service and will last indefinitely.

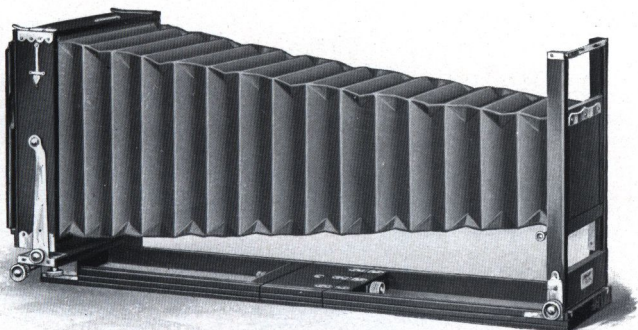
Specifications: *Bellows Draw*—5 x 7, 14 in.; 6½ x 8½, 15½ in.; 8 x 10, 17 in. *Weight*—5 x 7, 4¾ lbs.; 6½ x 8½, 6 lbs.; 8 x 10, 6¾ lbs. *Size of Lens Board*—5 x 7, 3¾ x 6¾ in.; 6½ x 8½, 4½ x 6½ in.; 8 x 10, 5 x 6 in. *Carrying Case*—Square style canvas.

List of Prices:

	5 x 7	6½ x 8½	8 x 10
R. O. C View with Case and Holder	\$12.00	\$13.00	\$14.00
R. O. C. View Complete Outfit*	27.00	35.00	42.00
Extra Carrying Carrying Case, Regular	1.75	2.00	2.25

*R. O. C. Complete Outfit includes: R. O. C. View Camera, Symmetrical Lens and D. V. Auto Shutter, six Plate Holders, Combination Tripod, R. O. C. Focusing Cloth, and Carrying Case holding complete outfit.

EMPIRE STATE VIEW



FOR over fifteen years this camera has been a favorite among commercial photographers for its peculiar adaptability for all such work.

Has horizontal and vertical swings, reversible back with cut out boards and rising and falling front, actuated by rack and pinion, and a very great focal capacity. Constructed of hand rubbed mahogany, with lacquered brass fittings and built to withstand rough usage.

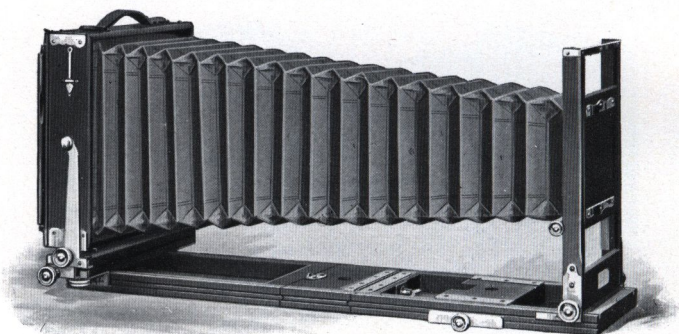
Specifications: *Bellows Draw*—5 x 7, 22 in.; 6½ x 8½, 27 in.; 8 x 10, 30 in.; 11 x 14, 37 in.; 14 x 17, 48 in. *Weight*—5 x 7, 6 lbs.; 6½ x 8½, 7½ lbs.; 8 x 10, 9½ lbs.; 11 x 14, 16 lbs.; 14 x 17, 23¾ lbs. *Size of Lens Board*—5 x 7, 3¼ x 3¼ in.; 6½ x 8½, 4¼ x 4¼ in.; 8 x 10, 5 x 5 in.; 11 x 14, 5¾ x 5¾ in.; 14 x 17, 7 x 7 in. *Carrying Case*—Long style canvas, with compartment for holders. Up to and including the 11 x 14 size, has both front and back focus; larger sizes are made with back focus only.

List of Prices:

	5 x 7	6½ x 8½	8 x 10	11 x 14	14 x 17
Empire State with Case and Holder	\$21.00	\$22.00	\$25.00	\$36.00	\$60.00
Empire State Complete Outfit* . .	36.00	44.00	53.00		
Complete Outfit, as above, but with Rapid Rectigraphic instead of Symmetrical Lens	47.00	56.00	67.00		
Extra Carrying Case	2.00	2.25	2.50	3.25	5.00

*Empire State Complete Outfit includes: Empire State Camera, Symmetrical Lens, Double Valve Auto Shutter, six Plate Holders, Combination Tripod, R. O. C. Focusing Cloth, and Case to hold complete outfit.

EMPIRE STATE No. 2



HAVING all the advantages of the original Empire State, this splendid instrument embodies additional features which make for even greater convenience and efficiency—features designed to meet every condition which may arise, so that the most particular photographer can wish for no convenience or adjustment which it does not possess. It is the most practical view camera ever offered.

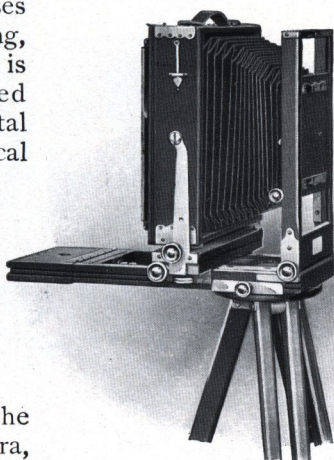
A noticeable improvement is the method of locking the extensions, not by the old-fashioned, long threaded screw, but by means of a specially constructed device which locks by merely being pushed in and given a quarter turn.

The front extension is attached to the bed by a piano hinge, while the back extension, which is detachable, in addition to the above locking device is further strengthened by two clamp catches. These hold it absolutely rigid and at the same time permit it to be slipped on or off instantly.

A sliding tripod block is provided, which clamps securely at any point in the front extension, making it possible to always support the box directly above the tripod when short focus lenses are used. And no matter what focus of lens is used, the bellows is automatically kept up in place by a spring arrangement attached to the inside bellows frame. This requires no attention by the operator, as it folds automatically when the instrument is closed. This instrument is provided with both front and back focus, permitting the camera to be racked up

EMPIRE STATE No. 2

as close to the front as desired, thus accommodating lenses of the widest angle. The lens board is very large, will accommodate the heaviest lenses and is mounted in a strong, rigid standard. The back is reversible and is supplied with vertical and horizontal cut-off boards, and vertical and horizontal swings are provided; both actuated by rack and pinion. The rising and falling front is also actuated by rack and pinion. The nuts which control all adjustments are located on the right side of the camera, while the corresponding binding nuts are all on the left. Particular attention is called to the low prices at which the Empire State No. 2 complete outfits are listed.



Tripod may be attached at any point

Empire State No. 2 is made of polished, kiln dried mahogany. Corners are dovetailed and reinforced by brass angle pieces, making an exceptionally strong box.

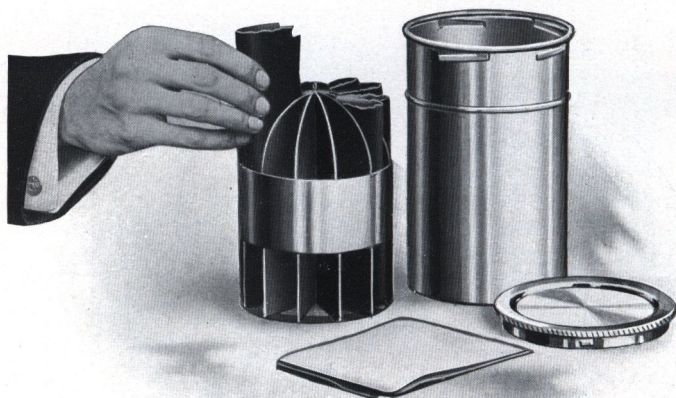
Specifications: *Bellows Draw*—5 x 7, 22 in.; 6½ x 8½, 27 in.; 8 x 10, 30 in. *Weight*—5 x 7, 7¼ lbs.; 6½ x 8½, 8¾ lbs.; 8 x 10, 11¼ lbs. *Size of Lens Board*—5 x 7, 3¾ x 3¾ in.; 6½ x 8½, 4¼ x 4¼ in.; 8 x 10, 5 x 5 in. *Carrying Case*—Canvas, long style, with compartment for holders.

List of Prices:

	5 x 7	6½ x 8½	8 x 10
Empire State No. 2 with Case and Holder . . .	\$23.00	\$25.00	\$28.00
Empire State No. 2 Complete Outfit* . . .	38.00	47.00	56.00
Complete Outfit, as above, but with Rapid Rectigraphic instead of Symmetrical Lens . . .	49.00	59.00	70.00
Extra Carrying Case	2.00	2.25	2.50

*Empire State No. 2 Complete Outfit includes: Empire State No. 2 Camera, Symmetrical Lens, Double Valve Auto Shutter, six Plate Holders, Combination Tripod, R. O. C. Focusing Cloth, and Case to hold complete outfit.

PREMO FILM PACK TANK



THOSE who use the Premo Film Pack need never give a thought to development, for if they will use the Premo Film Pack Tank, they can absolutely know that every pack they expose is certain to be perfectly developed, provided they follow the simple directions for use of the tank. This means that the merest beginner, without any need of skill or help, can get as good results in development as the most expert photographer.

For the tank is simplicity itself. It requires no experience, no lengthy manipulation in a close dark-room. And we recommend the tank system to the most careful workers as being infinitely simpler than the older method and producing results superior to those which can be obtained by the most painstaking tray development.

The Premo Film Pack Tank consists of two pieces—a metal receiver or cage for the films, and a tank with cover for the developing fluid. The entire outfit is self-contained and can be easily carried in a corner of a suitcase.

The cage is divided into twelve compartments—in the 5 x 7 size, six—each accommodating one film. As the film is taken from the pack it is held between the thumb and fingers, slightly bent from top to bottom, and slipped into its respective com-

PREMO FILM PACK TANK

partment. When all the compartments are filled, the cage is placed in tank, which has been previously filled with developer, the top replaced and the films left to develop for a certain specified time. No further attention is necessary except to turn the tank, end for end, several times during the progress of development.

At the expiration of the full time, open the tank, take out the cage, remove films, place them in a tray of water for a moment, then transfer to the fixing bath. Development is completed. Rinse out cage and tank and set them aside.

The operation of removing films from the pack and loading the cage is done, of course, in a darkened room by the light of a ruby lamp. During the day any darkened closet will suffice, at night any dark room in which the shades are drawn will answer. To load the films in cage will take only two or three minutes, and as soon as the top is placed on tank it may be brought out into any light and left until development is completed. And night is really an ideal time to develop film, as they can be fixed and washed in a short time, and they will dry over night, being all ready to print from in the morning.

If desired to develop less than a dozen films, one merely removes from his pack as many films as have been exposed, places them in the cage, and proceeds in the same manner as described above.

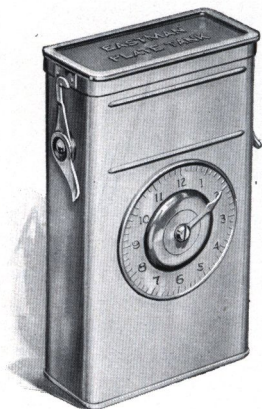
The cage of the No. 1 Tank is slightly different from that shown in the illustration, but the method of loading is the same and of course the results are just as dependable.

List of Prices

Premo Film Pack Tank No. 1, for 12 $1\frac{3}{4} \times 2\frac{3}{8}$ or $2\frac{1}{4} \times 3\frac{1}{4}$ films	\$1.25
Do, No. 2, for 12 $2\frac{1}{2} \times 4\frac{1}{4}$, $3\frac{1}{4} \times 4\frac{1}{4}$, $3 \times 5\frac{1}{4}$, $3\frac{1}{4} \times 5\frac{1}{2}$ or 4×5 films	3.50
Do, No. 3, for 6 5×7 films	4.00
Premo Tank Developing Powders, in packages of 6, No. 120
Premo Tank Developing Powders, in packages of 6, No. 225
Premo Tank Developing Powders, in packages of 6, No. 335
Kodak Acid Fixing Powder, per 1 pound package25
Do, per $\frac{1}{2}$ pound package15
Do, per $\frac{1}{4}$ pound package10

EASTMAN PLATE TANK

IN the Eastman Plate Tank, plates may be developed in the same manner and with the same assurance of excellent results as may films in the Premo Film Pack Tank. The theory of construction is precisely the same, with of course such differences as are necessary because of the physical difference between films and plates.



It consists of a metal solution cup, a cage for holding twelve or less plates and a loading block for loading plates into the cage. In the $3\frac{1}{4} \times 4\frac{1}{4}$, $3\frac{1}{4} \times 5\frac{1}{2}$ and 4×5 sizes, the cage of plates may be developed in a Premo Film Pack Tank, so that one using a Premo that takes films or plates and having a Premo Film Pack Tank needs only purchase the cage and loading block of the plate tank for the tank development of his plates, an advantage

in economy. It is thus apparent that the owner of a Premo plate camera can not only use films or plates in his camera with equal facility, but he can also avail himself of the advantages of tank development with either medium.

List of Prices

Eastman Plate Tank for 4×5 , $3\frac{1}{4} \times 5\frac{1}{2}$ or smaller plates, includes Solution Cup, Plate Cage, Loading Block and Adjustable Kit	\$ 3.50
Do, 5×7 , without Kit	4.50
Do, 8×10 , with Adjustable Kit	10.00
Adjustable Kit for 4×5 or $3\frac{1}{4} \times 5\frac{1}{2}$ Tank, to take smaller plates50
Kits for 5×7 Tank, to take $3\frac{1}{4} \times 5\frac{1}{2}$, $4\frac{1}{4} \times 6\frac{1}{2}$ or $4\frac{3}{4} \times 6\frac{1}{2}$ plates, each75
Extra Adjustable Kit for 8×10 Plate Tank	1.00
Plate Cage and Loading Block for 4×5 and $3\frac{1}{4} \times 5\frac{1}{2}$ plates (can be used in a 4×5 Premo Film Pack Tank)	1.75
Eastman Plate Tank Powders, for 4×5 Tank, per package, $\frac{1}{2}$ dozen20
Do, for 5×7 Tank, per package, $\frac{1}{2}$ dozen35
Do, for 8×10 Tank, per package, $\frac{1}{2}$ dozen50
Kodak Acid Fixing Powder, per 1-pound package25

P R E M O L E N S E S

ALL Premo Cameras are regularly fitted with the best lenses obtainable, each in its particular grade. For those who wish lenses in barrel for view cameras or other use, we list below several desirable types. Manufacturers' prices on any others will be supplied on demand.

ZEISS KODAK ANASTIGMAT LENS $f:6.3$

No.	Size of Plate Covered with Full Aperture	Equivalent Focus	Price
1	$2\frac{1}{2} \times 4\frac{1}{4}$	$4\frac{1}{2}$ inches	\$21.50
2	$3\frac{1}{2} \times 4\frac{1}{4}$	5 inches	22.00
3	4×5	$6\frac{1}{8}$ inches	27.00
4	4×5	$6\frac{1}{8}$ inches	30.50
5	5×7	$8\frac{1}{2}$ inches	40.00
6	$6\frac{1}{2} \times 8\frac{1}{2}$	10 inches	54.00

B. & L.-ZEISS PROTAR LENS—SERIES VII A

No.	Size of Plate Covered with Full Aperture	Focus of Front Lens	Focus of Back Lens	Combined Focus	Speed	Price
2	$3\frac{1}{2} \times 4\frac{1}{4}$	$8\frac{3}{4}$ in.	$7\frac{3}{8}$ in.	$4\frac{1}{2}$ in.	$f:7$	\$ 52.50
3	4×5	$11\frac{3}{8}$ in.	$7\frac{3}{8}$ in.	5 in.	$f:7-7$	57.50
5	$4\frac{1}{2} \times 6\frac{1}{2}$	$11\frac{3}{8}$ in.	$8\frac{3}{4}$ in.	$5\frac{5}{8}$ in.	$f:7$	61.50
8	5×7	$13\frac{3}{4}$ in.	$11\frac{3}{8}$ in.	7 in.	$f:7$	73.50
9	5×8	$16\frac{1}{8}$ in.	$11\frac{3}{8}$ in.	$7\frac{1}{2}$ in.	$f:7-7$	86.00
11	$6\frac{1}{2} \times 8\frac{1}{2}$	$16\frac{1}{8}$ in.	$13\frac{3}{4}$ in.	$8\frac{1}{2}$ in.	$f:7$	93.00
12	$6\frac{1}{2} \times 8\frac{1}{2}$	$18\frac{7}{8}$ in.	$13\frac{3}{4}$ in.	$9\frac{1}{8}$ in.	$f:7-7$	114.50
17	8×10	$23\frac{3}{8}$ in.	$18\frac{7}{8}$ in.	$11\frac{7}{8}$ in.	$f:7$	169.00

B. & L.-ZEISS PROTAR LENS—SERIES V, $f:18$

The B. & L.-Zeiss Protar, Series V, is designed for extreme wide-angle work. This lens embraces a field of 110 degrees.

No.	Size	Equivalent Focus	Price
1	$4\frac{1}{4} \times 6\frac{1}{2}$	$3\frac{3}{8}$ inches	\$23.00
2	5×7	$4\frac{7}{8}$ inches	23.00
3	$6\frac{1}{4} \times 8\frac{1}{2}$	$5\frac{9}{16}$ inches	29.00
4	8×10	$7\frac{3}{8}$ inches	36.00

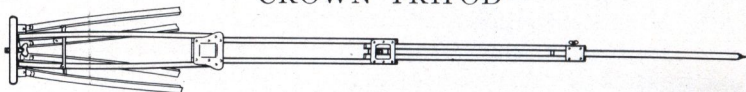
SYMMETRICAL WIDE-ANGLE LENS

While not an anastigmat, this is an excellent wide-angle lens at a moderate price, having an angle of about 80 degrees. It is furnished in cells to interchange with the various lenses supplied on Premo Cameras.

No.	Size	Equivalent Focus	Price in Cells Only
1	4×5	$3\frac{1}{2}$ inches	\$ 5.00
2	5×7	5 inches	7.50
3	$6\frac{1}{2} \times 8\frac{1}{2}$	$6\frac{1}{2}$ inches	12.00
4	8×10	8 inches	15.00

P R E M O T R I P O D S

CROWN TRIPOD



Made in four sections. Very rigid.

Style	Folded	Extended	Weight	Price
No. 1 . .	16 $\frac{1}{4}$ inches . .	4 $\frac{1}{3}$ feet . .	36 ozs. . .	\$5.50
No. 2 . .	17 $\frac{1}{4}$ inches . .	4 $\frac{2}{3}$ feet . .	65 ozs. . .	6.00
No. 3 . .	20 inches . .	5 $\frac{1}{2}$ feet . .	70 ozs. . .	7.50

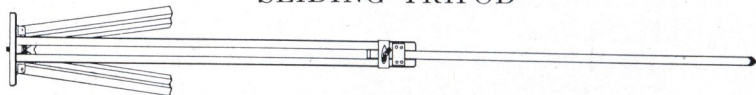
COMBINATION TRIPOD



This tripod is made on the sliding and folding principle. The wood parts are of ash and the finish is of the very best.

Style	Size of Camera	Weight	Price
No. 2 $\frac{1}{2}$. .	6 $\frac{1}{2}$ x 8 $\frac{1}{2}$ and smaller . . .	3 lbs. . . .	\$3.00
No. 3 . .	8 x 10 and 10 x 12 . . .	4 lbs. . . .	3.50
No. 4 . .	11 x 14 and 14 x 17 . . .	5 lbs. . . .	4.50
No. 5 . .	17 x 20 and 20 x 24 . . .	8 lbs. . . .	6.00

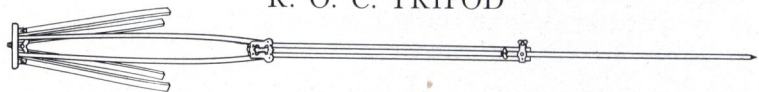
SLIDING TRIPOD



A perfectly rigid tripod for the heaviest cameras.

Style	Size of Camera	Weight	Price
No. 1 . . .	5 x 7 and smaller . . .	2 lbs. . . .	\$2 00
No. 2 . . .	5 x 8 and 6 $\frac{1}{2}$ x 8 $\frac{1}{2}$. . .	2 lbs. 8 ozs. . . .	2.50
No. 3 . . .	8 x 10 and 10 x 12 . . .	4 lbs. 8 ozs. . . .	3 00
No. 4 . . .	11 x 14 and 14 x 17 . . .	6 lbs. 8 ozs. . . .	4.00

R. O. C. TRIPOD

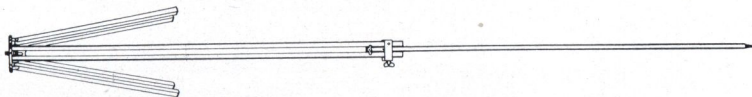


The R. O. C. Tripod is of the combination type and is for use with any camera up to and including the 5 x 7 size.

Weight, 32 ounces Length, 22 to 57 inches Price, \$1.70

P R E M O T R I P O D S

RAY SLIDING TRIPOD



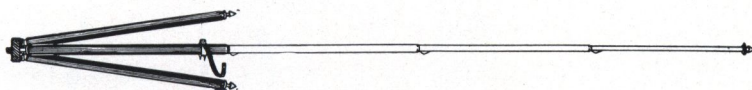
For cameras up to and including the 5 x 7 size this is a very satisfactory tripod at small expense.

Weight, 16 ounces

Length, 29 to 54 inches

Price, 80 cents

THE KODAK METAL TRIPOD



Combining light weight and compactness with exceptional rigidity, this is an ideal tripod for cameras up to 5 x 7.

Has telescoping legs of brass tubing—lower ones nickeled—the upper black enameled, and should a part become inoperative through wear or accident, any section may be removed for repairs. This is a unique feature among metal tripods.

When extended each section catches and holds firmly. To close, it is necessary to press in top catch only, the others then releasing automatically.

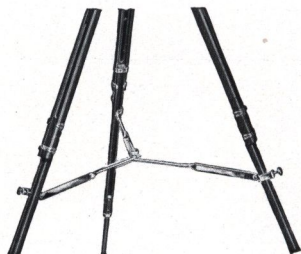
The Nos. 1 and 2 have revolving heads for attaching to camera. With this construction the camera may be swung, so as to take in the desired view without moving the tripod, a distinct advantage over other types of metal tripods.

The Nos. 1 and 2 also have straps for holding the legs in place when closed.

	Sections	Closed	Length Extended	Weight	Price
Kodak Metal Tripod No. 0 . . .	3	15½ in.	39½ in.	15 ozs.	\$1.60
Kodak Metal Tripod No. 1 . . .	4	15 in.	48½ in.	24½ ozs.	2.50
Kodak Metal Tripod No. 2 . . .	5	13½ in.	49½ in.	25 ozs.	3.25
Leather Carrying Case, either style					1.50

P R E M O A C C E S S O R I E S

EASTMAN TRIPOD BRACE

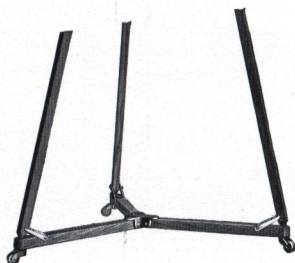


Out of doors, or indoors when the R. O. C. Tripod Truck is not used, this is an excellent attachment for holding tripod legs in position. Made entirely of metal, it can be instantly attached, and even when tripod is lifted the legs cannot collapse or change their position.

Eastman Tripod Brace \$1.00

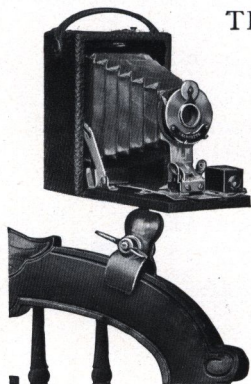
R. O. C. TRIPOD TRUCK

For flash-light work, home portraiture, in fact, any branch of indoor photography, this truck is a very great convenience. It holds the tripod legs firmly in place and there is no danger of slipping nor of tripod spikes marring floors or rugs. Can be easily moved on its castors to any part of room, and folds up compactly when not in use.



No. 1, for average Tripods, \$1.00; No. 2, for very heavy Tripods, \$1.25

THE UNIVERSAL CLAMP



The Universal Clamp is a small, convenient article which takes the place of a tripod, and which may be attached to any camera. It can be carried readily in the pocket, is very light, and may be attached to a chair, fence, the front board of an automobile, or other object which may be at hand. The clamp jaws are padded with felt.

Price \$.75

PREMO ACCESSORIES

THE PREMO PORTRAIT ATTACHMENT

This attachment simply fits on in front of the regular lens and in no way affects the operation of the camera, excepting to so change the focus as to permit working close to the subject, thereby giving good sized head and shoulder portraits. Not supplied for cameras larger than 5 x 7. Please order by number.



Made with Premoette Jr. and Premo Portrait Attachment (Reduced)

- No. 0. For Premo Jr. No. 1 and No. 1A \$.50
 No. 3. For $3\frac{1}{4} \times 4\frac{1}{4}$ Film Premo No. 1; $3\frac{1}{4} \times 4\frac{1}{4}$ Pocket Premo C; Premoette Jr. No. 1A, both single and double lens; Premo Jr. Nos. 3 and 450



- No. 5. For all 4 x 5, 3A and 5 x 7 Premos Nos. 8, 9, and 10; all sizes of Filmplate Premos; 3A Pocket Premo C; 3A and 4 x 5 Film Premo No. 1 \$.50
 No. 6. For Premoette Jr. No. 1A *Special*50
 No. 7. For 3A Filmplate Premo *Special*50
 No. 8. For Premoette Jr. No. 1, with both single and double lens50

KODAK COLOR SCREENS

These are mounted in the same manner as the Kodak Portrait Attachment. Please order by number.

- No. 0. For Premo Jr. Nos. 1 and 1A \$.50
 No. 3. For $3\frac{1}{4} \times 4\frac{1}{4}$ Film Premo No. 1; $3\frac{1}{4} \times 4\frac{1}{4}$ Pocket Premo C; Premoette Jr. No. 1A, both single and double lens; Premo Jr. Nos. 3 and 475
 No. 5. For all 4 x 5, 3A and 5 x 7 Premos Nos. 8, 9 and 10; all sizes of Filmplate Premos; 3A Pocket C; 3A and 4 x 5 Film Premo No. 1 1.00
 No. 6. For Premoette Jr. No. 1A *Special*75
 No. 7. For 3A Filmplate Premo *Special* 1.00
 No. 8. For Premoette Jr. No. 1, with both single and double lens50

PREMO ACCESSORIES

PREMO PLATE HOLDER

Always the easiest of holders to load and unload, Premo holders are made absolutely light-tight by a fully patented light-lock. This device is shown in cut



and is constructed of finely tempered, non-corrosive metal with independently operating spring fingers overlaid with a closely woven, specially prepared fabric.

The fingers bring this fabric into such close and immediate contact with the shutter cover that a slide can be inserted cornerwise without admitting light to the plate. Premo holders are fitted with specially lacquered pressboard slides that will not electrify, collect dust, crack or split.

$3\frac{1}{4} \times 4\frac{1}{4}$	\$1.00	5×7	\$1.25
$3\frac{1}{4} \times 5\frac{1}{2}$	1.00	$6\frac{1}{2} \times 8\frac{1}{2}$	1.75
4×5	1.00			

UNIVERSAL PLATE HOLDER

These holders are made with bottom flap, avoiding all danger of the heaviest plates falling out. They are strongly constructed and made to fit the Empire State and Premo View cameras. Slides are pressboard.

5×7	\$1.00	11×14	\$4.00
$6\frac{1}{2} \times 8\frac{1}{2}$	1.10	14×17	5.00
8×10	1.25			

R. O. C. PLATE HOLDER

This holder is of good construction and is adapted for use in the R. O. C. View Camera only. It has pressboard slides.

5×7	. . \$1.00	$6\frac{1}{2} \times 8\frac{1}{2}$. . \$1.10	8×10	. . \$1.25
--------------	------------	------------------------------------	------------	---------------	------------

HOLDER KITS

Size Outside	Size of Opening for Plate	Price
4×5	$3\frac{1}{4} \times 4, 3\frac{1}{4} \times 4\frac{1}{4}$	\$.20
5×7	$3\frac{1}{4} \times 4, 3\frac{1}{4} \times 4\frac{1}{4}, 3\frac{1}{4} \times 5\frac{1}{2}, 4 \times 5, 4\frac{1}{4} \times 6\frac{1}{2}$.25
$6\frac{1}{2} \times 8\frac{1}{2}$	$3\frac{1}{4} \times 4\frac{1}{4}, 4 \times 5, 3\frac{1}{4} \times 5\frac{1}{2}, 4\frac{1}{4} \times 6\frac{1}{2}, 4\frac{3}{4} \times 6\frac{1}{2}, 5 \times 7$.30
8×10	$4\frac{1}{4} \times 6\frac{1}{2}, 4\frac{3}{4} \times 6\frac{1}{2}, 5 \times 7, 6\frac{1}{2} \times 8\frac{1}{2}$.40
11×14	$6\frac{1}{2} \times 8\frac{1}{2}, 8 \times 10, 10 \times 12$.50
14×17	$10 \times 12, 11 \times 14$.80

PREMO ACCESSORIES

PREMO FILM PACK ADAPTERS

Adapters are regularly carried in stock for all Premo and Poco cameras up to and including the 5 x 7 size. For cameras of other manufacture, adapters can usually be furnished if sample plate holders fitting such cameras be sent us as a guide. In the latter case, there is usually a small extra charge for the special work necessary to make the adapters conform with such holders. In ordering adapters always specify what cameras they are intended for.

Size	Price	Size	Price
3 $\frac{1}{4}$ x 4 $\frac{1}{4}$	\$1.00	4 x 5	\$1.50
3 x 5 $\frac{1}{2}$	1.50	5 x 7	2.50
3A (3 $\frac{1}{4}$ x 5 $\frac{1}{2}$)	1.50		

HOLDER AND ADAPTER SLIDES

Size	Pressboard	Lacquered Pressboard	Hard Rubber	Size	Pressboard	Lacquered Pressboard	Hard Rubber
3 $\frac{1}{4}$ x 4 $\frac{1}{4}$	\$.10	\$.20	\$.20	6 $\frac{1}{2}$ x 8 $\frac{1}{2}$	\$.25	\$.45	\$.50
3 $\frac{1}{4}$ x 5 $\frac{1}{2}$15	.25	.25	8 x 1035		.65
4 x 515	.25	.25	11 x 1450		
5 x 720	.35	.35				

PREMO FILM PACKS

Twelve exposures in each pack.

Size	Price	Size	Price	Size	Price
1 $\frac{3}{4}$ x 2 $\frac{3}{8}$	\$.25	3 $\frac{1}{4}$ x 4 $\frac{1}{4}$	\$.70	4 x 5	\$.90
2 $\frac{1}{4}$ x 3 $\frac{1}{4}$40	3 x 5 $\frac{1}{2}$75	5 x 7	1.60
2 $\frac{1}{2}$ x 4 $\frac{1}{4}$50	3A (3 $\frac{1}{4}$ x 5 $\frac{1}{2}$)80		

GLASS DRY PLATES

Seed, Standard or Stanley.

Size	Price per Dozen	Size	Price per Dozen	Size	Price per Dozen
3 $\frac{1}{4}$ x 4 $\frac{1}{4}$	\$.45	4 $\frac{1}{4}$ x 6 $\frac{1}{2}$	\$.90	6 $\frac{1}{2}$ x 8 $\frac{1}{2}$	\$1.65
3 $\frac{1}{4}$ x 5 $\frac{1}{2}$65	5 x 7	1.10	8 x 10	2.40
4 x 565	5 x 8	1.25		

VELOX PAPER

The very best developing paper for amateur use.

Size	SINGLE WEIGHT			DOUBLE WEIGHT		
	Doz.	$\frac{1}{2}$ Gross	Gross	Doz.	$\frac{1}{2}$ Gross	Gross
2 $\frac{1}{4}$ x 3 $\frac{1}{4}$	\$.15	\$.60	\$1.00	\$.20	\$.75	\$1.25
2 $\frac{1}{2}$ x 4 $\frac{1}{4}$15	.70	1.25	.20	.90	1.55
3 $\frac{1}{4}$ x 4 $\frac{1}{4}$15	.80	1.50	.20	1.00	1.90
3 $\frac{1}{4}$ x 5 $\frac{1}{2}$15	.80	1.50	.20	1.00	1.90
4 x 525	1.10	2.00	.30	1.40	2.50
5 x 735	2.00	3.50	.45	2.50	4.40
Velox Post Cards20	1.10	2.00

PREMO ACCESSORIES

KODAK CANDLE LAMP

This lamp is well made, collapsible, of special tested ruby fabric, bound in metal frames.

Kodak Candle Lamp \$.25
Extra Candles for same, per dozen 30



KODAK DARK ROOM LAMP

The Kodak Dark Room Lamp is oil burning and is fitted with both orange and ruby glass.

No. 2 Kodak Dark Room Lamp . . . \$1.00

DEVELOPING TRAYS

Bulls-Eye, $3\frac{1}{4} \times 4\frac{1}{4}$	\$.12	Flexo, 5×8	\$.15
Bulls-Eye, 4×5 or 4×615	Eastman Enameled, $4\frac{3}{8} \times 5\frac{3}{8}$25
Bulls-Eye, 5×725	Eastman Enameled, 4×625
Flexo, 4×610	Eastman Enameled, $5\frac{1}{4} \times 7\frac{3}{8}$50

KODAK PRINT ROLLER

The most convenient and efficient roller made for amateur use. Has 2 x 6-inch rubber rollers and nickeled frame.

Price \$.50



FLEXO PRINT ROLLER



Inexpensive but reliable, with 4-inch rubber roller with black enameled frame.

Price \$.15

PRINTING FRAMES

Eastman Printing Frames are made of seasoned wood with suitable brass springs insuring perfect contact of paper and negative.



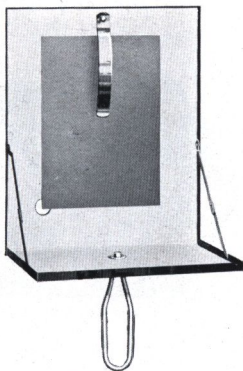
Eastman Printing Frame, $3\frac{1}{4} \times 4\frac{1}{4}$, opens two-thirds	\$.25
Eastman Printing Frame, $3\frac{1}{4} \times 5\frac{1}{2}$, for films, opens two-thirds25
Eastman Printing Frame, $3\frac{1}{4} \times 5\frac{1}{2}$, for plates, opens two-thirds25
Eastman Printing Frame, 4×5 , opens two thirds25
Eastman Printing Frame, 5×7 , opens two-thirds35

PREMO ACCESSORIES

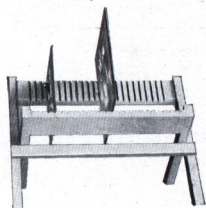
THE EASTMAN FLASH SHEET HOLDER

The safest and most convenient method of flashlight photography is in the use of Eastman Flash Sheets with the Eastman Flash Sheet Holder.

The sheet is held in place by a spring finger, and the holder may be held always between the sheet and the operator, either with hand or on a tripod, a tripod socket being provided for this purpose. When all is ready the flash is set off by touching a match from the back to its lower corner, through a small aperture.



Eastman Flash Sheet Holder	\$1.00
Eastman Flash Sheets, No. 1, per pkg. $\frac{1}{2}$ doz. sheets, 3 x 425
Eastman Flash Sheets, No. 2, per pkg. $\frac{1}{2}$ doz. sheets, 4 x 540
Eastman Flash Sheets, No. 3, per pkg. $\frac{1}{2}$ doz. sheets, 5 x 760



PREMO NEGATIVE RACK

This rack accommodates negatives of all sizes. It folds flat when not in use.

No. 1, for 12 negatives	\$.20
No. 2, for 24 negatives25

KODAK TRIMMING BOARD

A thoroughly reliable trimming board at a moderate price, constructed of hard wood with natural finish. The blade is of the best steel and a rule is fitted to the board.



No. 1, 5 x 5 in.	\$.40
No. 2, 7 x 7 in.60

Transparent Trimming Gauge for either (extra) \$.20

PREMO ACCESSORIES

PREMO OPTICAL OUTFIT

Consists of Portrait, Wide Angle, Telephoto, Enlarging and Copying Lens, Ray Filter and Duplicator. They slip over the regular lenses and are enclosed in a plush lined case, leather covered.



Outfit complete 4 x 5, for lenses 1 $\frac{5}{8}$ in. diam.	\$6.00
Outfit complete 5 x 7, for lenses 1 $\frac{5}{8}$ in. diam.	6.00
Enlarging and Copying Lens	1.25
Portrait Lens	1.25
Ray Filter	1.00
Duplicator40

A B C DEVELOPING AND PRINTING OUTFIT

Eastman's A B C Developing and Printing Outfit includes every requisite for developing by the dark room method, printing and finishing twenty-four 4 x 5 or smaller pictures.

1 Kodak Candle Lamp, 25c.; 1 4 x 5 Printing Frame, 25c.; 1 4 x 5 Glass for Frame, 5c.; 1 4-ounce Graduate, 15c.; 1 Stirring Rod, 5c.; 4 Developing Trays, 40c.; 5 Tubes Eastman's Special Developer, 25c.; $\frac{1}{2}$ pound Kodak Acid Fixing Powder, 15c.; 1 package Bromide Potassium, 5c.; 2 dozen Velox Paper, 50c.; 2 ounces Nepera Solution, for developing Velox, 10c.; Instruction Book, 10c. These articles if purchased separately would cost \$2.30. Price, complete, neatly packed, \$1.50.

Eastman 3A Outfit, similar to above, but providing for 3 $\frac{1}{4}$ x 5 $\frac{1}{2}$ negatives, \$1.50.

DEVELOPING AND PRINTING ON VELOX PAPER

Size	Developing and Printing per Pack		Developing only, Per Pack	Printing only, Each Exposure	
	Mounted	Unmounted		Mounted	Unmounted
1 $\frac{3}{4}$ x 2 $\frac{3}{4}$, 12 exp. . . .	\$.95	\$.80	\$.40	\$.06	\$.05 $\frac{1}{2}$
2 $\frac{1}{4}$ x 3 $\frac{1}{4}$, 12 "	1.40	1.28	.50	.08	.07
2 $\frac{1}{2}$ x 4 $\frac{1}{4}$, 12 "	1.50	1.38	.70	.08	.07
3 $\frac{1}{4}$ x 4 $\frac{1}{4}$, 12 "	1.50	1.38	.70	.08	.07
3 $\frac{1}{4}$ x 5 $\frac{1}{2}$, 12 "	1.80	1.68	1.00	.10	.09
4 x 5, 12 "	1.80	1.68	1.00	.10	.09
5 x 7, 12 "	2.40	2.10	1.20	.12 $\frac{1}{2}$.10

NOTE.—Unmounted prints are furnished unless otherwise specified in order. "Double Weight" prints will be billed at mounted rates.

No orders executed for less than 25 cents.

All prints are mounted with Kodak Dry Mounting Tissue, and, therefore, do not curl.

PREMO ACCESSORIES

THE UNIVERSAL ALBUM

(Patent Applied For)

Made on a new principle, which does away with mounting prints by paste or otherwise. They are merely slipped into pocket strips at top and bottom, and will not come out unless removed by hand. Has handsome grain leather cover and black leaves with linen finish.

A, $2\frac{1}{4}$ x $3\frac{1}{4}$, 25 leaves, 3 on . . .	\$2.25	E, $3\frac{1}{4}$ x $5\frac{1}{2}$, 50 leaves, 3 on . . .	\$3.50
B, $2\frac{1}{2}$ x $4\frac{1}{4}$, 25 leaves, 3 on . . .	2.50	F, 4 x 5, 25 leaves, 2 on . . .	2.60
C, $3\frac{1}{4}$ x $4\frac{1}{4}$, 25 leaves, 3 on . . .	2.50	G, $4\frac{1}{4}$ x $6\frac{1}{2}$, 25 leaves, 2 on . . .	2.75
D, $3\frac{1}{4}$ x $5\frac{1}{2}$, 25 leaves, 3 on . . .	2.75	H, 5 x 7, 25 leaves, 2 on . . .	3.00

THE FORUM ALBUM

Flexible, black leather embossed cloth cover.

A, 25 black leaves, or N, 25 Sepia leaves, $5\frac{1}{2}$ x 7	\$0.35
B, 25 black leaves, or O, 25 Sepia leaves, 7 x 1050
C, 25 black leaves, or P, 25 Sepia leaves, 10 x 750
D, 25 black leaves, or R, 25 Sepia leaves, 11 x 14	1.25
E, 50 black leaves, $5\frac{1}{2}$ x 750
F, 50 black leaves, 7 x 1075
G, 50 black leaves, 10 x 775
H, 50 black leaves, 11 x 14	1.50

CARD MOUNTS

BEVPLANE

Carbon Black and Scotch Gray

For Prints	Size Outside	Per 50	Per 100
$2\frac{1}{4}$ x $3\frac{1}{4}$. . .	4 x 5	\$.30	\$.60
$2\frac{1}{2}$ x $4\frac{1}{4}$. . .	$4\frac{1}{4}$ x 6	.40	.80
$3\frac{1}{4}$ x $4\frac{1}{4}$. . .	5 x 6	.45	.85
$3\frac{1}{4}$ x $5\frac{1}{2}$. . .	$4\frac{3}{4}$ x 7	.45	.90
4 x 5 . . .	$5\frac{1}{2}$ x $6\frac{1}{2}$.45	.90
5 x 7 . . .	7 x 9	.85	1.70

MARINE

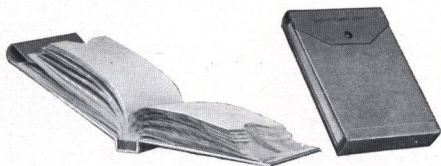
London Brown and Ash Gray

For Prints	Size Outside	Per 50	Per 100
$2\frac{1}{4}$ x $3\frac{1}{4}$. . .	$4\frac{3}{8}$ x $5\frac{3}{8}$	\$.50	\$.95
$2\frac{1}{2}$ x $4\frac{1}{4}$. . .	$4\frac{1}{2}$ x $6\frac{1}{4}$.50	1.00
$3\frac{1}{4}$ x $4\frac{1}{4}$. . .	$5\frac{1}{8}$ x $6\frac{1}{8}$.50	1.00
$3\frac{1}{4}$ x $5\frac{1}{2}$. . .	$5\frac{3}{8}$ x 8	.70	1.35
4 x 5 . . .	6 x 7	.65	1.25
5 x 7 . . .	8 x 10	1.05	2.10

EASTMAN FILM NEGATIVE ALBUMS

A very convenient means of keeping film negatives dust proof and always where you can find them. A printed index on the cover serves as a means of record.

For 100 negatives, $2\frac{1}{2}$ x $4\frac{1}{4}$, or smaller	\$.75
For 100 negatives, $3\frac{1}{4}$ x $4\frac{1}{4}$, or 4 x 5	1.00
For 100 negatives, $3\frac{1}{4}$ x $5\frac{1}{2}$, or smaller	1.00
For 100 negatives, 5 x 7, or smaller	1.50



M I S C E L L A N E O U S

Bulbs and Tubes, No. 2	\$.25	Premo View Finder	\$1.50
Bulbs and Tubes, No. 335	Screws for Tripod Head:	
Focus Cloth, Rubber50	Nos. 1, 2 and 325
Photo Paste, 3 oz. tube15	Nos. 4 and 540
Photo Paste, 5 oz. tube25	Screws for Tripod Leg:	
Thermometer Stirring Rod60	Nos. 1, 2 and 315
R. O. C. Tumbler Graduates,		Nos. 4 and 525
moulded, 2 ounces10	Milled Head Screws for Cam-	
Do, 4 ounces15	eras:	
Do, 8 ounces20	$\frac{1}{2}$ inch and smaller15
Do, 16 ounces30	Larger than $\frac{1}{2}$ inch25
Ground Glass:		Shoulder Straps, Black:	
4 x 515	$\frac{1}{2}$ x 52-inch with Snaps and	
5 x 720	Buckles25
$6\frac{1}{2}$ x $8\frac{1}{2}$25	$\frac{5}{8}$ x 52-inch with Snaps and	
8 x 1030	Buckles30
Lens Boards:		$\frac{1}{2}$ x 66-inch, with Buckle30
For Premos, up to 5 x 735	$\frac{3}{4}$ x 74-inch, with Buckle35
For Premos, larger50	Tan Straps for View Cases,	
For Stereo Cameras50	with Buckle. Specify style	
For View Cameras, up to 8 x 1050	and size of camera when	
For View Cameras, larger70	ordering:	
Reversible Backs:		34, 40 and 44 inches25
For View Cameras, 5 x 7	7.50	52, 60 and 66 inches30
For View Cameras, $6\frac{1}{2}$ x $8\frac{1}{2}$	9.00	Tubing, per foot06
For View Cameras, 8 x 10	11.00		
For View Cameras, 11 x 14	14.00		

TERMS

Prices included in this catalogue are net, excepting to dealers.

When ordering, give shipping directions, whether by freight, express or otherwise. If not stated, we use our discretion.

All orders for shipment C. O. D. must be accompanied with sufficient remittance to cover transportation both ways.

Mail orders must be accompanied with remittance for full amount of purchase, including postage, or we will ship by express.

Under no circumstances are we responsible for loss of mail packages. We suggest for safety that all such packages be ordered registered.

All goods are carefully packed and we cannot be held responsible for any damage during transit.

Orders for special parts or for goods not listed in this catalogue will be filled on customer's responsibility only. Under no circumstances can we permit the return of such goods for credit.

All prices are F. O. B. at Rochester, N. Y.

ROCHESTER OPTICAL DIVISION,

EASTMAN KODAK CO.

ROCHESTER, N. Y.



CHASE & DOAK
BELFAST, MAINE