

Voigtländer

& Sohn,
A. G.,

Established 1756.



Celebrated Lenses & Cameras

Fully Illustrated Catalogue post free, on application.

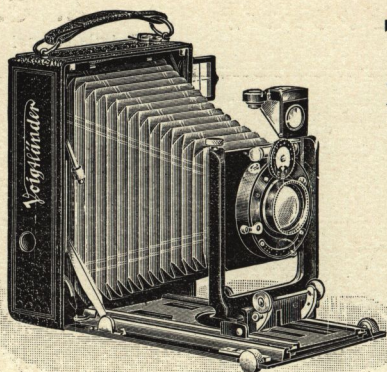
12, Charterhouse St., Holborn Circus, LONDON, E.C.

Telephone Address—
6620 (2 lines) HOLBORN.



Telegraph Address—
BINOCLE, SMITH, LONDON.

Sole Agent for Great Britain & Colonies—F. G. PHILLIPS.



Voigtlander

NEW POCKET CAMERA.

"Tourist"

$\frac{1}{4}$ -plate or 9×12 cm.

For Plates or Film Pack.
Constructed entirely of Light
Metal. Portable and Rigid.

Dimensions—
 $5\frac{1}{2} \times 4\frac{3}{8} \times 1\frac{1}{8}$ ins.

Weight— $1\frac{1}{4}$ lbs.

The "Tourist" Camera is an efficient pocket apparatus of superior construction, the double extension movement extends to 12 inches, enabling the back combination lens to be used alone. A special feature is the extreme rigidity of the front. The Camera is fitted with a direct vision Newton View Finder. The apparatus is supplied fitted with our "Euryscope" Lens, which is a good useful objective and is suitable for general photographic work. If, however, the finest results are desired, we specially recommend our Anastigmats "Radiar," "Heliar," and "Collinear."

The Camera is made in three models.

- Model A.** Camera fitted with double extension and rising and cross front movement.
- Model B.** Similar to Model A, but with the advantage of an adjustable lowering baseboard, giving a swing back movement.
- Model C.** Similar to Model B, but is constructed so that the dark slide can be fitted into position without removing the focussing screen entirely from the back of Camera.

	Model A.	Model B.	Model C.
	£ s. d.	£ s. d.	£ s. d.
Camera complete with Voigtlander "Euryscope" Lens F 7.7, in Pronto Shutter, 3 Single Metal Dark Slides and Focussing Screen	4 10 0	4 19 0	—
Ditto, in Ibo-Shutter	5 2 0	5 11 0	—
Ditto, with Voigtlander "Radiar" Double Anastigmat F 6.8, 13.5 cm. $5\frac{1}{8}$ in. focus, in Compound Shutter	6 5 0	6 14 0	7 6 0
Ditto, with Voigtlander Collinear III, F 6.8, 13.2 cm. $5\frac{1}{4}$ in. focus, in Compound Shutter	9 1 0	9 10 0	10 2 0
Ditto, with Voigtlander "Heliar" F 4.5, 15 cm, 6 in. focus, in Compound Shutter	11 0 0	—	—

A Brilliant View Finder in addition to the Newton Finder can be supplied at an extra cost of 5/-

ACCESSORIES.

Telephoto Attachment $\times 2\frac{1}{2}$ Magnification for Radiar, Collinear, and Euryscope Lenses	£3 0 0
Ditto for Heliar Lens	3 10 0
Film Pack Holder	7 6

Sole Agent for Great Britain and Colonies, F. G. PHILLIPS.

ACCESSORIES—*continued.*

Single Metal Dark Slides	each	1 6
Contract Filters A or B for Radiar, Collinear, or Euryscope ...		17 6
Ditto, for Heliar		1 0 0
"Dukar" Autochrome Filter for Radiar, Collinear, or Euryscope ...		12 0
Ditto, for Heliar		1 0 0
Solid Leather Sling Case for Camera, 3 Slides and Film Pack Holder ...		10 6

Excelsior Telescopic Tripod—Brass, 11/6; Aluminium, 18/-

Voigtländer

"RADIAR" CAMERA.

10 x 15 cm. 6 x 4 ins.

Postcard size.

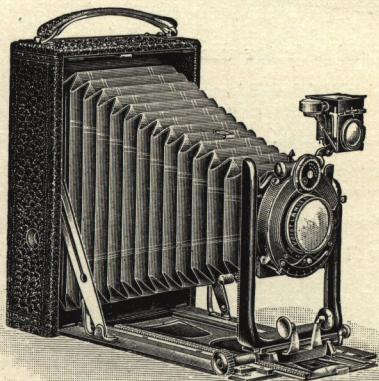
For Plates or Film Pack.

LIGHT METAL
CONSTRUCTION.

Dimensions—

$7\frac{1}{8} \times 5\frac{1}{8} \times 1\frac{1}{8}$ ins.

Weight—1 lb. 14 ozs.



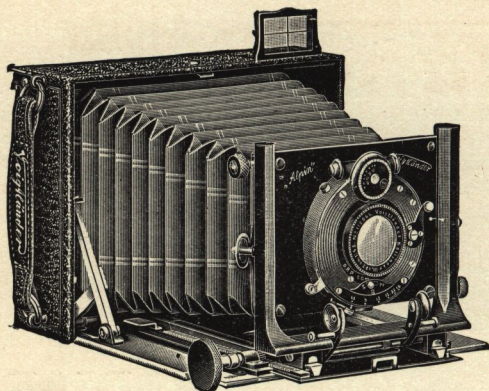
The "Radiar" Camera is a portable apparatus of good construction, and can be thoroughly recommended where a compact Camera of the postcard size is required. It is fitted with double extension rackwork movement, the back combination of the "Radiar" lens can therefore be used alone as a long focus objective.

Camera complete with "Radiar" Double Anastigmat, F 6.8, 16.5 cm, $6\frac{1}{2}$ ins. focus, in Compound Shutter, 3 Single Metal Dark Slides, and Focussing Screen	£7 0 0
Telephoto Attachment $\times 2\frac{1}{2}$ magnification	3 10 0
Film Pack Holder... ..	12 0
Single Metal Dark Slides each	2 0
Contrast Filter A or B	17 6
"Dukar" Autochrome Filter	15 0
Solid Leather Sling Case for Camera, 3 Slides and Film Pack Holder ...	12 6

Excelsior Telescopic Tripod—Brass, 11/6; Aluminium, 18/-

Send for Complete
Catalogue to

12, Charterhouse St., Holborn Circus, London, E.C.



The
Voigtlander
**Alpine
Camera,**

$\frac{1}{4}$ -Plate, or 9×12 cm.

10×15 cm.; 6×4 ins.
Postcard size.

For Plates or Film
Pack.

The perfect Hand Camera, suitable for use in all Climates.

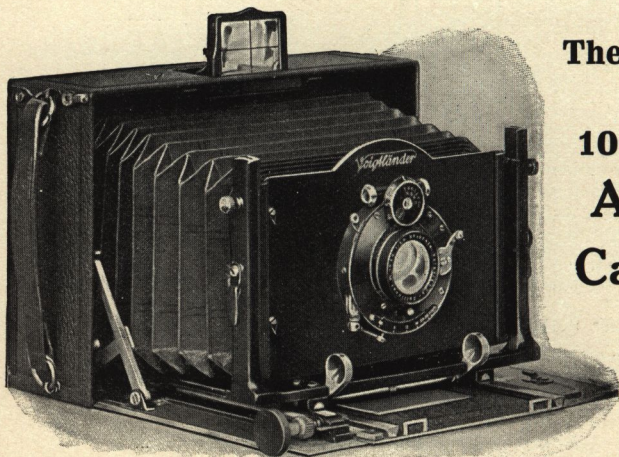
This Camera is entirely constructed of **LIGHT METAL**, and is fitted with a Voigtlander Lens, in Compound Shutter. It weighs 1lb. 11 ozs. $\frac{1}{4}$ -Plate size, 2 lbs. 10 ozs. Postcard size.

In consequence of the very long triple extension, work can be done with the Back Combination of the Collinear Lens.

This Camera can be fitted with a telephoto attachment which has been especially designed to screw inside the camera. This form will be seen to be a great advantage for producing good telephoto work.

The Postcard size or 10×15 cm Camera can be supplied fitted for Panoramic or Stereoscopic work.

The measurements of the apparatus are $5\frac{3}{4} \times 4\frac{3}{8} \times 1\frac{1}{2}$ inches $\frac{1}{4}$ -Plate size, $7\frac{1}{8} \times 4\frac{3}{4} \times 2\frac{1}{4}$ inches Postcard or 10×15 cm size.



**The Postcard
or
 10×15 cm
Alpine
Camera.**

For Prices see next page.

Sole Agent for Great Britain and Colonies, F. G. PHILLIPS.

Voigtländer Alpine Camera

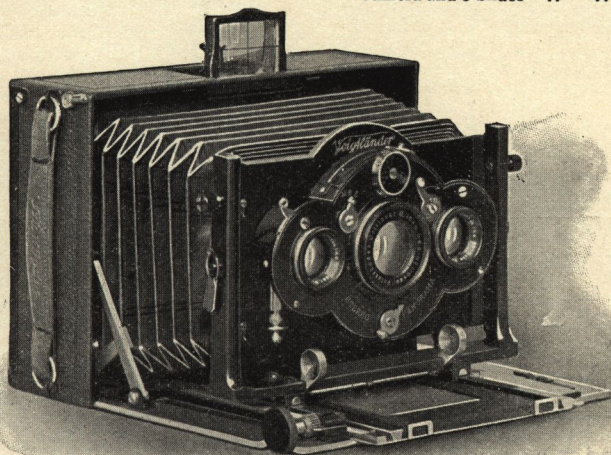
PRICES.

$\frac{1}{4}$ -Plate or 9 × 12 cm.

	£	s.	d.
Camera with Collinear Lens Series III., 12 cm., in Compound Shutter, six Single Metal Dark Slides and Focussing Screen	11	10	0
Ditto, with Collinear III., 13.2 cm.	12	0	0
Ditto, with Dynar 12 cm.	10	5	0
Ditto, with Dynar 13½ cm.	10	15	0
Ditto, with Dynar 15 cm.	11	5	0
Telephoto Attachment, giving a magnification of 2½ times	3	0	0
Ditto, for use with 15 cm. Objectives	3	10	0
Film Pack Holder	7	6	
Contrast Filters, A, B, or Orange, each	17	6	
"Dukar" Autochrome Filter	12	0	
Ditto, for use with 15 cm. Objectives	15	0	
Solid Leather Sling Case for Alpine Camera and 6 Slides	10	6	

Postcard—10 × 15 cm,
6 × 4 inches, or Stereoscopic.

	£	s.	d.
Camera with Collinear Lens, Series III., 15 cm., in Compound Shutter, six Single Metal Dark Slides and Focussing Screen	17	10	0
Ditto, with 2 Collinear Lenses III., 10½ cm., in Compound Shutter	21	10	0
Ditto, with 3 Objectives in Triple Compound Shutter	29	10	0
Telephoto Attachment for Collinear III., 15 cm., giving a magnification of 2½ times	3	10	0
Film Pack Holder	12	0	
Contrast Filters, A, B, or Orange, each	17	6	
"Dukar" Autochrome Filter	15	0	
Contrast Filters for the Stereo Lenses per pair	1	15	0
"Dukar" Autochrome Filters for ditto per pair	1	4	0
Solid Leather Sling Case for Camera and 6 Slides	14	6	



The Stereo-Panoram Alpine Camera with 3 Lenses in Triple Compound Shutter.

Excelsior Telescopic Tripod—Brass, 11/6 ... Aluminium, 18/-

Send for Complete
Catalogue to

12, Charterhouse St., Holborn Circus, London, E.C.

Voigtländer

Metal Spring Camera

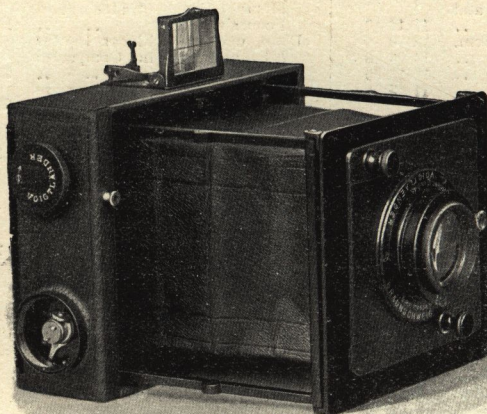
WITH

Improved Patented Focal Plane Shutter (Self-Capping).

$\frac{1}{2}$ -Plate, or 9 x 12 cm.

$\frac{1}{2}$ -Plate, or 13 x 18 cm.

Press one lever and the Camera is ready for Exposure.



This Camera is the most perfect apparatus of the Folding Focal Plane Type that has yet been manufactured; it has the advantage of being instantly brought into position for exposure by simply pressing the small lever to the right of the Finder, this releases the Finder and the Camera front which spring into position. Another advantage

is the Self-capping Focal Plane Shutter which is easily manipulated and can be set when the sheath of the dark slide has been drawn out.

Fitted with Voigtländer Lens in Focussing Mount.		With 3 Double Dark Slides, Solid Form with folding Wood Shutters.			With 3 Double Dark Slides, Solid Form with extractable Vulcanite Shutters, or Book Form with folding Wood Shutters.		
	cm	£	s.	d.	£	s.	d.
$\frac{1}{2}$ -Plate or 9 x 12 cm size.	Dynar 13 $\frac{1}{2}$, F 6	13	10	0	14	0	0
	Collinear III., 13 $\frac{1}{2}$, F 6.8	14	15	0	15	5	0
	Collinear II., 13 $\frac{1}{2}$, F 5.4	15	10	0	16	0	0
	Heliar 15, F 4.5	15	10	0	16	0	0
	Telephoto Attachment giving a fixed Magnification of 2 $\frac{1}{2}$ times.						
$\frac{1}{2}$ -Plate or 13 x 18 cm size.	For Objectives 13 $\frac{1}{2}$, cm	3	0	0	..		
	" " 15, cm	3	10	0	..		
	Dynar 18, F 6	..			16	15	0
	Collinear III., 18, F 6.8	..			18	0	0
	" II., 20, F 5.4	..			20	0	0

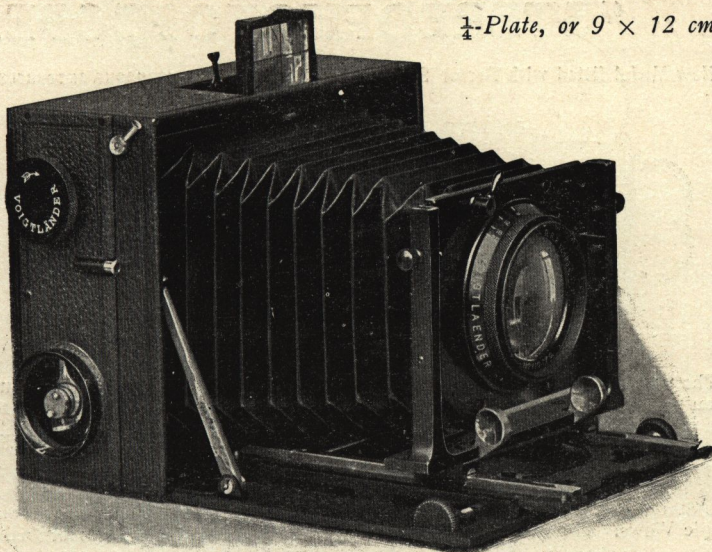
Excelsior Telescopic Tripod, Brass, 11/6; Aluminium, 18/-

Sole Agent for Great Britain and Colonies, F. G. PHILLIPS.

Voigtländer Heliar Camera

WITH

Improved Patented Focal Plane Shutter (Self-Capping).

 $\frac{1}{4}$ -Plate, or 9×12 cm.

This Camera is constructed of Light Metal similar to the Voigtländer Metal Spring Camera, and for high-class workmanship and mechanical ingenuity is unsurpassable. The Heliar Camera is fitted with a Focal Plane Shutter of similar construction as in the Spring Camera. The Lens generally supplied with this Camera is an 18 cm. Heliar $7\frac{1}{2}$ ins. focus.

The Camera is fitted with Rack and Pinion Focussing movement with extension to 11 ins., enabling Lenses of various Focal lengths to be used.

With Voigtländer Lens in Countersunk Mount.	Camera with 3 Double Dark Slides, Solid Form with Folding Wood Shutters.	Camera with 3 Double Dark Slides, fitted with extractable Ebonite Shutters or Book Form with Folding Wood Shutters.
Heliar 18cm., $7\frac{1}{2}$ ins., F 4·5	£16 0 0	£16 10 0
Collinear II. 15cm., F 5·4	14 15 0	15 5 0

Dimensions when closed, $6 \times 5 \times 2\frac{5}{8}$ ins.

Weight, without Lens, 2lbs. 9 ozs.

Telephoto Attachment giving a fixed Magnification of $2\frac{1}{2}$ times, £4 5s.

Leather Case for Camera and 3 Dark Slides, 18/-

6 20/-

Excelsior Telescopic Tripod—Brass, 11/6 .. " Aluminium, 18/-

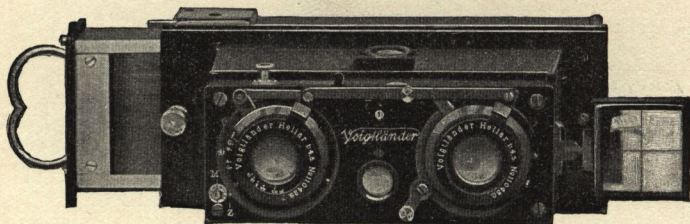
Send for Complete
Catalogue to

12, Charterhouse St., Holborn Circus, London, E.C.

Voigtländer

"STEREOPHOTOSCOPE."

New Model fitted with Sector Shutter for time and instantaneous exposures.



The "Stereophotoscope" will produce the most perfect Stereoscopic pictures upon plates $4\frac{1}{2} \times 1\frac{1}{2}$ inches, 4.5×10.7 cm. The body is constructed from one piece of metal, and it is, therefore, most suitable for warm or damp climates. The Lenses are fitted in focussing mounts. The Magazine Changing Box carries 12 plates, and has an automatic counter showing number of plates used. A Film pack holder can also be supplied. Stereophotos when viewed through the special size Stereoscope are magnified, and appear as large as the ordinary size Stereoscopic Views. The whole apparatus is of the **very highest class workmanship.**

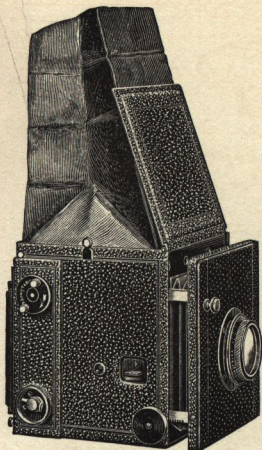
The Lenses are fitted with Iris Diaphragms, both of which can be regulated by one movement.

	Prices.	Code Word.
Voigtländer "Stereophotoscope," with rising front, two "Heliar" lenses, F 4.5, correctly paired, two view finders, Magazine for 12 plates, and leather sling case complete..	£ 22 10 0	Vertoskop
Ditto, without rising front	20 0 0	Photoskop
Ditto, with two Collinear Lenses III, F 6.8, and rising front..	20 0 0	Koverskop
Ditto, without rising front	17 10 0	Kophotkop
Extra magazine for 12 plates	4 0 0	Fotmagazin
Adapter for Single Nickel Dark Slides, with focussing Screen	10 0	Fotodapter
Six Single Nickel Dark Slides in case	17 0	Fotetui
Ditto, for Autochrome Plates.. .. .	19 0	Foantetin
Contrast Filters, A or B per pair	1 8 0	{ Fotalpha } A.
"Dukar" Autochrome Filters.. .. . per pair	1 5 0	{ Fotebeta } B.
Film Pack Holder	1 5 0	Cromfilter
Stereoscope with Achromatic lenses for viewing the transparent "Stereophotoscope" views	1 0 0	Fotpack
Reversing Frame for making the Stereoscopic Positive without cutting the Negative	8 0	Fostereo
		Stereram

All our "Stereophotoscopes" are engraved with the name Voigtländer.

Size of Stereophotoscope complete, $5\frac{1}{2} \times 4 \times 2\frac{3}{8}$ ins. Weight, 1 lb. 15 oz.

Sole Agent for Great Britain and Colonies, F. G. PHILLIPS.



Voigtlander

Metal Heliar-Reflex Camera "VIDA"

with Heliar Lens, F 4.5. $\frac{1}{2}$ -Plate or 9 x 12 cm.

The "Vida" is the most perfect of all Reflex Cameras comprising

Efficiency, Compactness, and Durability.

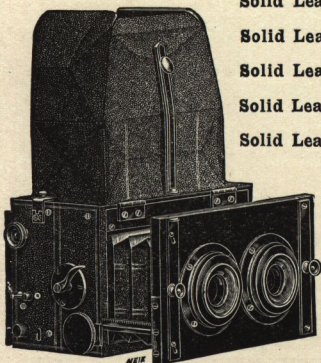
It is of superior construction, and is fitted with a Rack and Pinion Movement working on all the four corners of the front, ensuring rigidity when extended. The Mirror is of Optically Worked Glass, silvered on the surface, and coated with a colourless preparation for preservation. The image reflected is therefore identical with that obtained upon the plate. This arrangement permits the photographer to observe the image up to the moment of exposure. The Camera is fitted with a Focal Plane Shutter, giving time and instantaneous exposures up to 1/1000th of a second; and is guaranteed to work without vibration. The Camera is also fitted with a reversible back.

It has the following advantages—

1. The Camera is constructed entirely of light metal.
2. The focussing hood erects itself automatically.
3. The Apparatus is fitted with a Self-Capping Focal Plane Shutter, which is released by gentle pressure.
4. The Mirror and Shutter are set simultaneously.
5. An Extension Adapter can be fitted to the front for using lenses up to 14 inches focus.

PRICES.

Size of Plate.	Dimensions of Camera.	Lens.	Camera with 3 Double Dark Slides, Solid Form. Code Word.	Camera with 3 Folding Double Dark Slides, Book Form. Code Word.	Camera with 3 Double Dark Slides with Vulcanite Shutters. Code Word.	Camera with Magazine for 12 Plates. Code Word.
$4\frac{1}{2} \times 3\frac{1}{4}$ ins. or 9 x 12 cm.	$6\frac{7}{8} \times 6\frac{3}{8} \times 6\frac{3}{8}$ ins.	Heliar 18 cm. $7\frac{1}{8}$ in. F 4.5.	£21 5 0 Festvida	£21 15 0 Holzvida	£21 15 0 Guvida	£22 7 0 Wexvida
Heliar Reflex Camera (Wood Construction.)						
$2\frac{1}{2} \times 3\frac{1}{2}$ ins. or $6\frac{1}{2} \times 9$ cm.	$5\frac{1}{2} \times 5\frac{1}{4} \times 6$ ins.	Heliar 12 cm. $4\frac{1}{2}$ ins. F 4.5.	£16 5 0 Kleinspigl	£16 17 0 Sexwek
Postcard size, 10 x 15 cm.	$8\frac{3}{4} \times 8 \times 8\frac{1}{4}$ ins.	Heliar 21 cm. $8\frac{1}{4}$ ins. F 4.5.	£25 10 0 Kleid	..
$\frac{1}{2}$ -Plate or 12 x 16 $\frac{1}{2}$ cm.	10 x 10 x 8 $\frac{1}{2}$ ins	Heliar 24 cm. 9 $\frac{1}{2}$ ins. F 4.5	..	£30 0 0 Gropigil	£30 0 0 Groguspigl	£31 10 0 Growespigl
Stereoscopic $2\frac{3}{8} \times 5\frac{1}{2}$ ins. or 6 x 13 cm.	$4\frac{5}{8} \times 5 \times 7\frac{1}{2}$ ins.	2 Heliars 12 cm. $4\frac{3}{4}$ ins. F 4.5	£26 10 0 Kapnick	£27 9 0 Kapwex



Solid Leather Sling Case for Camera and three Double Dark Slides, 20/-, $2\frac{1}{2}$ ins. x $3\frac{1}{4}$ ins. or $6\frac{1}{2} \times 9$ cm.

Solid Leather Sling Case for Camera and six Double Dark Slides, 22/6, $2\frac{1}{2}$ ins. x $3\frac{1}{4}$ ins. or $6\frac{1}{2} \times 9$ cm.

Solid Leather Sling Case for Camera and three Double Dark Slides, 25/-, $4\frac{1}{4}$ ins. x $3\frac{1}{4}$ ins. or 9 x 12 cm.

Solid Leather Sling Case for Camera and six Double Dark Slides, 28/-, $4\frac{1}{4}$ ins. x $3\frac{1}{4}$ ins. or 9 x 12 cm.

Solid Leather Sling Case for Camera and three Double Dark Slides, 30/-, Postcard size, 10 x 15 cm.

Solid Leather Sling Case for Camera and six Double Dark Slides, 35/-, Postcard size, 10 x 15 cm.

Solid Leather Sling Case for Camera and three Double Dark Slides, 35/-, $\frac{1}{2}$ -Plate or 12 x 16 $\frac{1}{2}$ cm.

Solid Leather Sling Case for Camera and six Double Dark Slides, 40/-, $\frac{1}{2}$ -Plate or 12 x 16 $\frac{1}{2}$ cm.

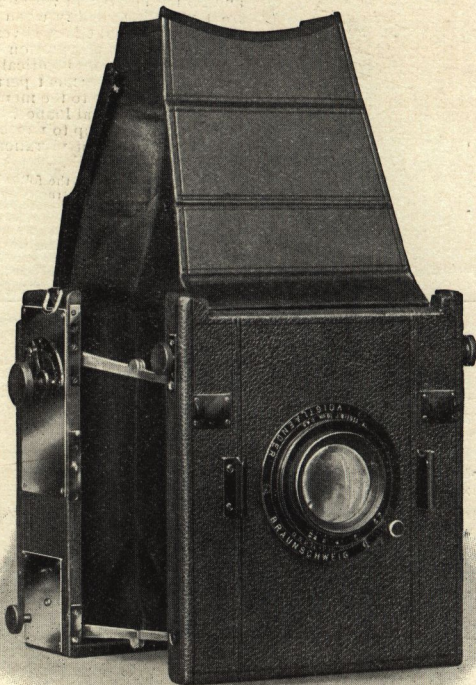
Solid Leather Sling Case for Camera and three Double Dark Slides, 17/6, Stereoscopic, $2\frac{3}{8} \times 5\frac{1}{2}$ ins., 6 x 13 cm.

Solid Leather Sling Case for Camera and six Double Dark Slides, 20/-, Stereoscopic, $2\frac{3}{8} \times 5\frac{1}{2}$ ins. 6 x 13 cm.

Voigtlander FOLDING REFLEX CAMERA.

$\frac{1}{4}$ -Plate or 9×12 cm. With Heliar Lens, F 4.5.

This Camera has been designed to meet the demand for a reliable apparatus embodying the advantages of the Reflex type in a portable model, the apparatus is constructed of the finest quality seasoned wood, with leather bellows and hood. It is fitted with a reversible back for horizontal or vertical pictures, the rising front is manipulated by a rack and pinion adjustment; focussing is done by means of the lever attached to the focussing mount of lens. The Camera is fitted with self-capping focal plane shutter, which is adjustable from the outside.

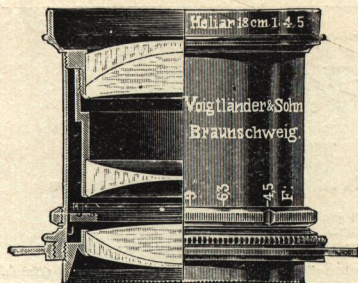


Dimensions, $4 \times 6\frac{1}{2} \times 7\frac{1}{2}$ ins. Weight with Lens, 4lbs. 5oz.

Prices of Voigtlander folding Reflex Camera and Accessories.

	£	s.	d.	Code Word.
Camera and 3 double dark slides, fitted with extractable ebonite shutters and Heliar lens, F 4.5, 18 cm ($7\frac{1}{8}$ ") ...	24	5	0	Kaaba
Telephoto attachment giving a fixed magnification of $2\frac{1}{2}$ times	4	5	0	Kader
Mechanical release		5	0	Kadett
Solid leather sling case for camera and 3 double dark slides	1	2	0	Kaff
" " " " 6 " "	1	6	0	Kafir

Sole Agent for Great Britain and Colonies, F. G. PHILLIPS.



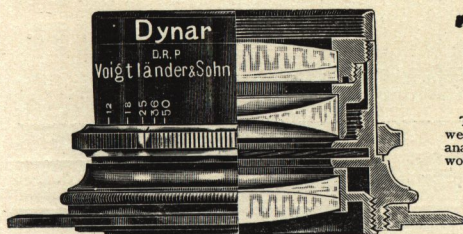
Voigtländer 'Heliar' Lens.

A brilliant Anastigmatic
Objective, working at a
full aperture of F 4.5
in all sizes.

Specially recommended for Reflex Cameras and Press Photography.

Equiva- lent Focus.	Diam. of Lens.	Size of Plate sharply covered F 4.5.	Price.	Code Word.	Counter- sunk Mount.	Code Word.	Focussing Mount.	Code Word.
cm	ins.	mm	ins.					
5	2	11	1 1/8 x 2	£4 0 0	Fiasco	..	£4 15 0	Fischer
8 1/2	3 3/8	19	2 x 2	4 15 0	Fiber	£5 0 0	5 10 0	Fisch
12	4 3/4	27	3 1/4 x 2 3/8	5 10 0	Fibrin	5 15 0	6 5 0	Fiscos
13 1/2	5 1/4	31	4 1/4 x 3 1/4	6 0 0	Fibro	6 5 0	6 15 0	Fibrano
15	6	33	4 3/4 x 3 3/4	6 5 0	Fibrinosus	6 10 0	7 0 0	Filiorum
18	7 1/4	40	5 1/2 x 4	8 0 0	Figella	8 5 0	8 15 0	Figurina
21	8 1/4	47	6 x 4	11 0 0	Fichte	11 10 0	12 0 0	Fittich
24	9 1/4	54	7 x 5	13 0 0	Finota	13 10 0	14 0 0	Finale
30	11 3/4	67	8 1/2 x 6 1/2	18 0 0	Firna
36	14 1/4	80	9 3/4 x 7	24 0 0	Fisano
42	16 1/2	93	10 3/4 x 8 1/4	31 0 0	Fiscal
48	19	107	12 x 10	37 10 0	Fistel
60	24	132	16 x 12	75 0 0	Finger

The 5 & 8 1/2 cm. "Heliars" are specially recommended for Cinematograph Photography.



Voigtländer 'Dynar' Lens.

FULL APERTURE F 6.

The construction of the "Dynar" Lens is now well known amongst amateurs requiring an anastigmat for hand or field camera use working at a full aperture of F 6. This lens is noted for its great light transmitting power, uniformity of definition, and brilliancy of its pictures.

The "Dynar" Lens can also be had to fit Kodak Cameras mounted in the same

way as the "Collinear" (see page 1106) at the following prices:—

For No. 3 F. P. Kodak "Dynar" F 6 125 mm £4 0 0
For No. 3a F 6 163 mm £4 15 0

Equiva- lent Focus.	Diameter of Lens.	Size of Plate sharply covered at full aperture.	Ordinary Mount.	Code Word.	Countersunk Mount.		Focussing Mount.	
					Price.	Code Word.	Price.	Code Word.
cm	ins.	mm	ins.	£ s. d.	£ s. d.		£ s. d.	
12	4 3/4	21	4 3/4 x 3 1/4	3 15 0	Dyn	4 0 0	4 10 0	Dynarch
13 1/2	5 1/4	24	5 1/4 x 4	4 5 0	Dyro	4 10 0	5 0 0	Dyroarch
15	6	26	6 x 4 3/4	4 15 0	Dysis	5 0 0	5 10 0	Dysisarch
18	7 1/4	32	7 x 5	6 0 0	Dytes	6 5 0	6 15 0	Dytesarch

The cost of pairing two "Heliars" or "Dynars" for Stereoscopic work is 8/-

Send for Complete
Catalogue to

12, Charterhouse St. Holborn Circus, London, E.C.

Voigtländer

“COLLINEAR” LENS.

“THE PERFECT LENS.”

The “COLLINEAR” LENS may well be styled “The Perfect Lens,” although one of our earliest and best known type of Anastigmat lenses, it is more popular in the photographic world of to-day than ever. It is peculiarly suited for both amateur and professional photographers, and there is no work for which the “Collinear” is unsuitable.

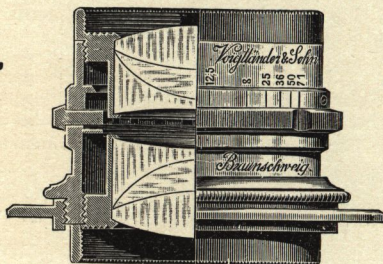
“Collinear” Lenses are symmetrical, the front and back combination being exactly the same focus, either can be used separately, and each in itself is a corrected achromatic anastigmat, giving searching definition. The detail in photographs taken with either or both combination of this lens is remarkable.

We supply “Collinears” to fit Kodak Hand Cameras so mounted that they can be fitted by the purchaser into the shutter of his camera. No alteration in the camera or shutter is necessary. A correctly marked diaphragm scale is supplied with each set.

For No. 3 F. P. Kodak “Collinear”	III., F 6.8 special focus	125 mm	..	£5 5 0
“ No. 3a	“ III., F 6.8	“ 166 mm	..	£6 5 0
“ No. 4a	“ III., F 6.8	“ 210 mm	..	£8 15 0

When ordering specify which type of shutter your camera has.

“COLLINEAR,”
SERIES II.



Full Aperture.
6 cm. to 20 cm.,
F 5.4.

25 cm. to 60
cm., F 6.3.

Equivalent Focus.		Diameter of Lens.	Size of Plate sharply covered.		Ordinary Mount.	Code Word.	Countersunk Mount.		Focussing Mount.	
			At Full Aperture.	Stopped Down.			Price.	Code Word.	Price.	Code Word.
cm.	ins.	mm.	ins.	ins.	£ s. d.		£ s. d.		£ s. d.	
6	2 1/2	11	2 x 2	3 1/2 x 3 1/2	4 10 0	Galen
7	2 3/4	13	3 1/2 x 2 1/2	4 x 3 1/2	4 10 0	Galeotto
9	3 1/4	17	4 x 2 3/4	4 1/2 x 3 1/2	5 0 0	Gandara	5 5 0	Gabes	5 15 0	Nager
12	4 1/4	23	4 1/2 x 3 1/2	6 1/2 x 4 1/2	5 15 0	Gaston	6 0 0	Gafun	6 10 0	Narcose
13 1/2	5 1/4	26	5 x 4	6 3/4 x 5 1/4	6 5 0	Gatter	6 10 0	Galmei	7 0 0	Narcin
15	6	29	6 1/2 x 4 1/2	8 1/2 x 6 1/2	6 15 0	Gawein	7 0 0	Gambia	7 10 0	Nauders
20	8	38	7 1/2 x 5	9 3/4 x 7	9 0 0	Gemma	9 8 0	Gaza	10 0 0	Negus
25	10	40	8 1/2 x 5	10 x 8	11 0 0	Georgia
31	12	48	8 1/2 x 6 1/2	12 x 10	15 0 0	Ginster
37	14 1/4	58	9 x 7	14 x 10 1/2	20 0 0	Gorgone
44	17 1/2	70	11 x 8	15 1/2 x 11 1/2	27 0 0	Gudrun
52	20 1/2	82	12 x 10	17 1/2 x 13 1/2	34 0 0	Guntram
60	23 1/2	91	13 3/8 x 10 1/8	19 1/2 x 15	45 0 0	Gunter

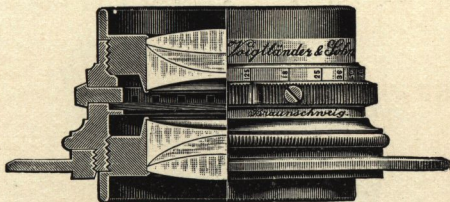
The cost of pairing two Collinears for Stereoscopic Work is 8/-

Sole Agent for Great Britain and Colonies, F. G. PHILLIPS,

Voigtländer**“Collinear”
SERIES III.****Full Aperture.****7 cm. to 18 cm., F 6·8.****20 cm. to 58 cm., F 7·7.**

Equivalent Focus.		Diameter of Lens.	Size of Plate sharply covered		Ordinary Mount.		Code Word.	Countersunk Mount.		Focussing Mount.						
			At Full Aperture.	Stopped Down.				Price.	Code Word.	Price.	Code Word.					
cm.	ins.	mm.	ins.	ins.	£	s.	d.	£	s.	d.	£	s.	d.			
7	2 3/4	11	2 1/2 x 1 3/4	4 x 3 1/4	4	0	0	Hadramaut			
9	3 1/4	14	3 1/2 x 2 3/4	4 1/2 x 3 1/4	4	5	0	Hagar	4	10	0	Hebe	5	0	0	Narbo
12	4 1/2	18	4 1/2 x 3 1/2	6 1/2 x 5	5	0	0	Hakon	5	5	0	Hedwig	5	15	0	Nathan
12 1/2	5	20	4 3/4 x 3 3/4	7 x 5 1/2	5	10	0	Halde	5	15	0	Hegar	6	5	0	Natter
15	6	23	6 1/2 x 4 3/4	8 x 6	6	0	0	Halma	6	5	0	Helga	6	15	0	Neckar
18	7 1/8	28	7 1/2 x 5	9 x 7	7	5	0	Hassan	7	10	0	Helm	8	0	0	Nelda
20	8	27	8 1/2 x 6 1/2	10 x 8	8	0	0	Hatto	8	5	0	Heliodor	8	15	0	Nenner
25	10	34	9 x 7	12 x 10	10	0	0	Hella
31	12	40	12 x 10	14 x 12	14	0	0	Hestia
37	14 1/2	47	14 x 10	16 x 13	18	0	0	Honduras
44	17 1/2	57	15 x 12	20 x 15	23	0	0	Horus
52	20 1/2	67	18 x 12	20 x 18	30	0	0	Hulda
58	23	76	20 x 14	24 x 20	42	0	0	Hutten

Cost of pairing 2 Collinears for Stereoscopic Work is 8/-

**“Collinear”
SERIES IV.****Full Aperture,
F 12·5.****Wide-Angle Anastigmat for Architectural, Process Work, and Landscapes.**

The Wide-angle Collinears give, with full aperture, a field of view of 75°. When stopped down, 95°.

Equivalent Focus.		Diameter of Lens.	Size of Plate sharply covered.		Price.	Code Word.		
			F 12·5.	Stopped Down.				
cm.	ins.	mm.	ins.	ins.	£	s.	d.	
10·5	4	8·8	4 $\frac{3}{4}$ × 3 $\frac{1}{2}$	6 $\frac{1}{4}$ × 4 $\frac{3}{4}$	3	10	0	Kabale
12	4 $\frac{1}{2}$	10	6 $\frac{1}{4}$ × 4 $\frac{1}{2}$	8 × 6	4	5	0	Kabul
15	6	12	7 × 5	10 $\frac{1}{4}$ × 8 $\frac{1}{2}$	5	0	0	Kallias
18	7 $\frac{1}{4}$	15	9 $\frac{1}{4}$ × 7 $\frac{1}{4}$	12 × 9 $\frac{1}{2}$	5	10	0	Komtur
20	8	16	10 $\frac{1}{4}$ × 8 $\frac{1}{4}$	12 × 10	6	0	0	Kandahar
25	10	21	11 $\frac{3}{4}$ × 9 $\frac{1}{4}$	15 $\frac{1}{4}$ × 11 $\frac{3}{4}$	8	0	0	Kaste
32	12 $\frac{1}{2}$	26	15 $\frac{1}{4}$ × 11 $\frac{1}{2}$	21 $\frac{1}{4}$ × 17 $\frac{1}{4}$	9	10	0	Kondor
44	17 $\frac{1}{2}$	35	21 $\frac{1}{4}$ × 17 $\frac{1}{2}$	27 $\frac{1}{4}$ × 23 $\frac{1}{4}$	13	0	0	Konon
58	22 $\frac{1}{2}$	46	27 $\frac{1}{4}$ × 23 $\frac{1}{2}$	31 $\frac{1}{4}$ × 27 $\frac{1}{4}$	20	0	0	Korfu
80	31 $\frac{1}{2}$	65	31 $\frac{1}{4}$ × 27 $\frac{1}{4}$	39 $\frac{1}{4}$ × 31 $\frac{1}{4}$	32	10	0	Kuno
100	39 $\frac{1}{2}$	80	39 $\frac{1}{4}$ × 31 $\frac{1}{2}$	47 $\frac{1}{4}$ × 35 $\frac{1}{4}$	45	0	0	Kupol

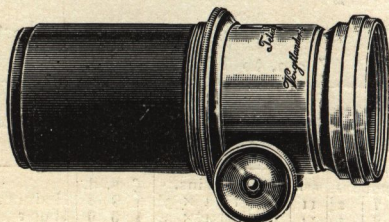
Send for Complete
Catalogue to**12, Charterhouse St., Holborn Circus, London, E.C.**

Voigtländer**TELEPHOTO
LENSES****Special Lenses for
Telephotography.**

Every degree of magnification may be obtained, according to the distance the Lens is placed from the plate. The image is from three to four times as large as that obtained by an ordinary Lens of the same focus as the Camera extension. An image ten to twelve times larger than that of the Positive Lens alone, can be obtained sharply defined.

The Telephotographic Lens is recognised as forming an essential part of the Photographer's outfit, as it gives him—within certain limits—a considerable range of foci to make the subject as large as he chooses.

PRICES.—The cost of complete Telephoto Lenses may be found by adding the cost of the Positive Lens selected to that of the Telephoto Attachment.

**TELEPHOTO
ATTACHMENT.**

No.	Price.
1	£4 5 0
2	4 5 0
3	4 15 0
4	5 5 0
5	6 0 0
6	7 10 0

SPECIAL TELEPHOTO ATTACHMENTS**FOR HAND CAMERAS,**

giving a fixed magnification of $2\frac{1}{2}$ times.

This Attachment is constructed to fit inside the Camera, an inner flange with thread being fitted to back of Lens enabling the Attachment to be easily put in position when required.

The Lens of the Camera is not interfered with in any way, and owing to the fitting of the Attachment inside, the rigidity of the Apparatus is not affected.

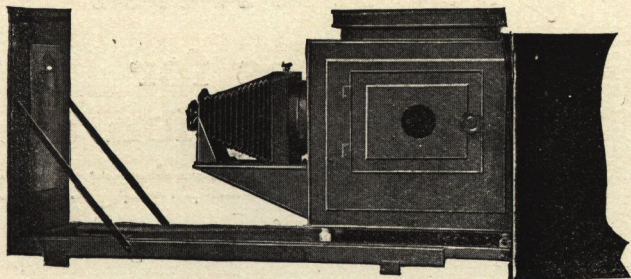
PRICES.

Attachment suitable for use with Anastigmats, 12 and 13 $\frac{1}{2}$ cm.	..	£3 0 0
" " " " " " 15 cm.	..	£3 10 0

Sole Agent for Great Britain and Colonies, F. G. PHILLIPS.

Voigtländer

Enlarging and Projection Apparatus for Stereophotoscope and other small Negatives.



The body of this Apparatus is constructed of Russian Iron; it is fitted with a 103 mm (4 in. diam.) condenser and an anastigmat objective, possessing very great luminosity. Negatives and Positives, up to the size $2\frac{1}{2}$ in. \times $3\frac{1}{2}$ in. ($6\frac{1}{2}$ \times 9 cm.) can be enlarged and projected.

The apparatus is mounted on a baseboard, to which is fitted an easel for holding the sensitive paper.

A negative carrier for enlarging one negative of the two stereophotoscope pictures, and a lightening carrier for lantern slide projection is supplied with the instrument.

PRICE.

Enlarging Apparatus with objective, negative carrier and double	£	s.	d.	Code Word.
slide carrier, without lamp, for Stereophotoscope plates	...	8	5	0
				Cajetan.

For particulars of Illuminating Apparatus see General Catalogue.

Voigtländer

ENLARGING AND PROJECTION APPARATUS.

For Negatives or Lantern Slides
 $3\frac{1}{4} \times 3\frac{1}{4}$ ins., $3\frac{1}{4} \times 4\frac{1}{4}$ ins., and
 9 \times 12 cm.

Superior Apparatus constructed of Russian Iron, lined with Asbestos, fitted with "Projectos" III, 20 cm focus, F 4.5 and 16 cm diameter, compound condenser, **£15 10 0**

With "Helomar" Lens, 18 cm.
 F 3.2, **£20 0 0**

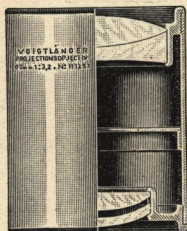


Full
 particulars
 of
 illuminating
 Apparatus
 for above
 upon
 application.

Send for Complete
 Catalogue to

12, Charterhouse St., Holborn Circus, London, E.C.

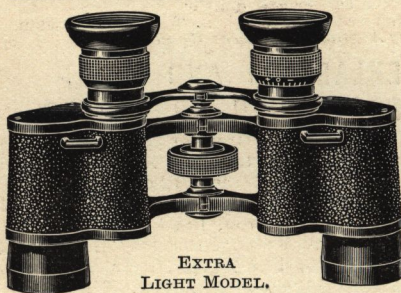
Voigtländer



Lenses for Projection and Cinematograph Photography.

THE increased popularity and advance in Cinematograph Photography and Optical Projection has created an increased demand for high-grade Lenses suitable for this work. Therefore we have produced, besides our well-known Objectives for Projection work, some new types with special qualifications.

Separate full and descriptive Catalogue of Cinematograph Lenses and Projection Apparatus free on application.



EXTRA
LIGHT MODEL.

Voigtländer

Prism Binoculars.

Giving Enhanced Stereoscopic Effect.

Invaluable for Sporting, Racing, Aviation, Touring, Military and Naval purposes.

The Voigtländer Prism Binocular combines the highest optical and mechanical excellence, giving brilliant definition and exceptionally large field of view.

Prices complete in Leather Sling Case.

Magnifications.	Dia. of Object Glass.	BINOCULARS.		MONOCULAR FORM.
		With Wheel Motion.	Without Wheel Motion.	
× 6	25 mm.	£ s. d. 6 10 0	£ s. d. 6 0 0	£ s. d. 2 15 0
× 6	30 mm.	8 0 0	7 10 0	3 10 0
× 6	36 mm.	9 10 0	9 0 0	4 5 0
× 6	42 mm.	—	10 10 0	5 0 0
× 8	25 mm.	7 0 0	6 10 0	3 0 0
× 8	30 mm.	9 0 0	8 10 0	4 0 0
× 12	30 mm.	9 15 0	9 5 0	4 5 0

Extra Light Model BINOCULARS.

Magnification.	Dia. of Object Glass.	With Wheel Motion.
× 6	24 mm	£6 7 0
× 6	27 mm	£6 15 0
× 8	27 mm	£7 5 0

Fully Illustrated Catalogue post free on application.

12, Charterhouse St., Holborn Circus, LONDON, E.C.

Telephone Address—
6620 (2 lines) HOLBORN.



Telegraph Address—
BINOCLE, SMITH, LONDON.