

## MAT-124G



Product No. 260320

### Quality and Performance Meeting All Professional Needs

The MAT-124 G is designed to provide maximum versatility. It accepts either 12-exposure load 120 film or 24-exposure load 220 film with a simple one-action adjustment of the pressure plate.

The built-in high precision match-needle CdS meter is activated as soon as the finder hood is opened to viewing position. The electrical contacts of this meter are gold-plated to ensure most effective electrical conductivity and, at the same time, to minimize the possibility of malfunction due to corrosion. Cross-coupled to the shutter speed and aperture controls, it affords accurate exposure setting with minimum trouble, since the meter is always visible from the shooting position.

- Yashinon 80mm f/3.5 4-element taking lens and Yashinon 80mm f/2.8 viewing lens; accepts 30mm bayonet mount filters and lens shade.
- Leaf-type shutter with speeds from 1 to 1/500 sec., plus B and built-in self-timer; M-X sync.
- Convenient thumbwheel shutter speed and aperture controls.
- Dual-purpose pressure plate adjustable to either 120 or 220 film with one simple action; exposure load reminder sets automatically with adjustment of the pressure plate.
- Match-needle CdS exposure meter cross-coupled to shutter and aperture systems; activator switch couples with finder hood operation; all switch contacts are gold-plated to ensure most effective and durable performance; meter operates on power from a 1.3V mercury battery (Mallory PX625, Eveready E625N or equivalent); ASA range from 25 to 400.
- Automatic film feed through manipulation of film crank; film loading by matching 'start' marks on film leader and camera.
- Positive platform focusing with the aid of an extra-large knob.
- Viewfinder system features fresnel-backed screen with matte center focusing spot; 3X magnifier built into finder hood for critical focusing.
- Shutter lock, film type indicator, exposure load reminder.
- Size and weight: 102x148x101mm (4x5.8x3.9 in); 1,080 grams (2.3 lbs).
- Filter and lens shade size: 30mm bayonet mount.



# YASHICA

## Match-Needle CdS Meter for Fast and Sure Exposure Control

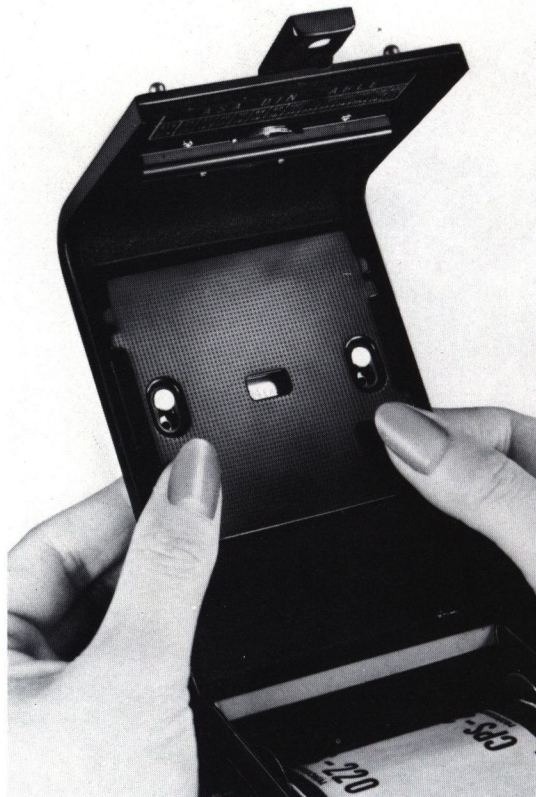
The meter visible from the shooting position shows at a glance whether the exposure setting is correct or not. In case the follow-pointer and the meter needle are not aligned, it means that exposure adjustment is necessary.

To make proper exposure adjustment, turn the shutter speed and/or aperture control thumbwheel until the follow-pointer is brought into perfect alignment with the meter needle.



## Dual-Purpose Pressure Plate Affords One-Action Adjustment

Slide the pressure plate either up or down to bring out the required indication — '12 EX' or '24 EX'. When thus adjusted, the exposure load indicator will automatically show the number of exposures the film to be loaded in the camera will provide and, at the same time, smooth loading of the specific type of film will be assured.





## AUXILIARY LENS SET w/CASE

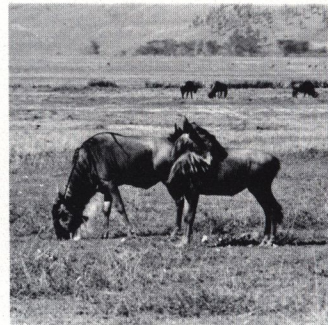
Telephoto Lens Set Product No. 670030  
Wide Angle Lens Set Product No. 670040



Also supplied with an exclusive viewing lens adapter featuring 30mm bayonet mount, the Auxiliary Telephoto and Wide-Angle Lenses assure a wide scope of application of Yashica TLR cameras to varying photographic requirements. The Auxiliary Telephoto Lens extends the focal length of the taking lens to 112.8mm, providing an image magnification of about 1.5 times the normal image size.

The Auxiliary Wide-Angle Lens, on the other hand, serves to reduce the focal length to 58.4mm, thus affording a wider coverage.

*With Wide-Angle Aux. Lens*

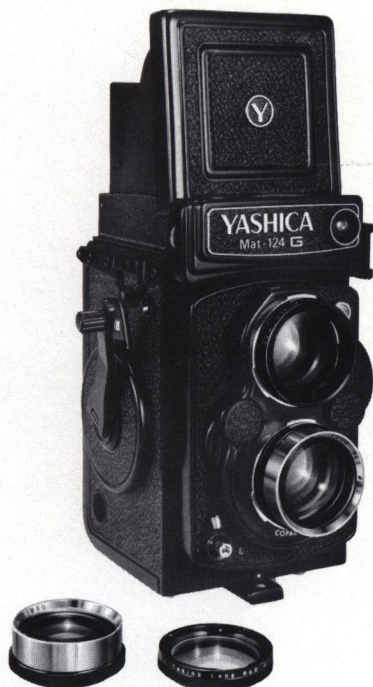


*With Telephoto Aux. Lens*



## CLOSE-UP LENS SET w/CASE

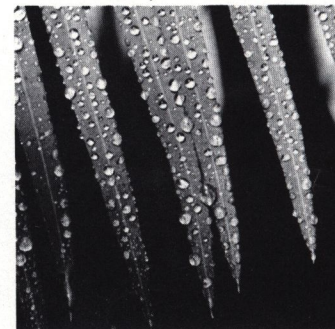
Close-Up Lens Set No. 1 Product No. 660410  
Close-Up Lens Set No. 2 Product No. 660420



Close-Up Lens No. 1 affords effective focusing on subjects within the range of 44cm and 61cm (17-5/16 inches and 24 inches), while Close-Up Lens No. 2 is for subject range from 36cm to 45cm (14-3/16 to 17-23/32 inches).

Both close-up lenses are supplied in a set with a bayonet mount adapter for the viewing lens which dispenses with the need for making parallax compensation.

*With Close-Up Lens No.2*



*With Close-Up Lens No.1*

