

Challenging the Future



YASHICA SAMURAI

3X ZOOM COMPACT SLR CAMERA



ENTER THE ERA OF SAMURAI

Designed For Action

3X Power Zoom In A New Compact Functional Form

Don't let that special shot escape you just because your subjects are far away. The Yashica Samurai lets you seize the moment instantly with its 3X power zoom lens. Anybody can operate the high-powered zoom, from wide-angle to telephoto, by pressing only two buttons. The multi-coated, large aperture (fast) lens, composed of 14 elements in 13 groups, has a 25 — 75 mm f/3.5 — 4.3 aperture, equivalent to a 35 — 105 mm zoom lens on a conventional 35 mm full-size format camera. Quick, accurate focusing is automatic with the TTL phase

detection system, so quality photographs are practically guaranteed. As a compact marvel with a unique vertical shape, this single-lens reflex compact camera is packed with everything you'll ever need in a form you can use. It is a functional, totally new concept in SLR photography. It is the Samurai.

*When converted into a 35 mm full-size format camera.



75 mm (105 mm)*



Double 35 mm Format

By employing this format, the Yashica Samurai enables you to shoot twice as many exposures with a given roll of film as you could with an ordinary 35 mm full-size format camera. It adds convenience and saves you money.

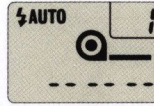


Approx. 50 mm
(approx. 70 mm)*

25 mm (35 mm)*

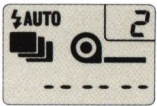


Two Autofocus Modes for Creativity and Accuracy



Autofocus Lets You Be Creative Without Worry

You have total freedom to create your own compositions in the Single Auto Focus Mode (SAF). The Yashica Samurai will focus automatically when you depress the shutter release button halfway. The green LED indicator in the viewfinder will tell you when the subject is locked in sharp focus. You can take a perfectly focused picture, at the angle you want, even through a window pane, without worry. There are no complicated settings. The Samurai takes care of the details while you concentrate on composing, and results will always be pleasing.



Capture That Moment With Continuous Autofocus

Children's actions are spontaneous. They won't wait with frozen expressions while you focus a camera. The Yashica Samurai's Continuous Auto Focus Mode (CAF) enables you to track the action without missing a beat. Pressing the shutter release button halfway in this mode allows you to follow moving objects while the camera constantly adjusts the focus. You won't miss a beat since the Samurai can shoot up to two frames per second.



Auto Exposure Makes Sure Everything's Perfectly Natural



Beautiful Photos Even In Difficult Lighting Conditions

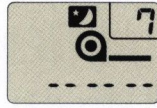
When lighting conditions are less than ideal, the Yashica Samurai's TTL Spot/Center-weighted SPD light metering and backlight compensation system go into action to make exposures as perfect as possible. The camera compensates automatically for naturally over-bright conditions. Even when the center portion of the image in the viewfinder is darker than its surroundings, due to backlighting or other adverse lighting conditions, the Samurai gets the correct exposure every time.

True-To-Life Images Regardless Of The Background

The automatic Daylight-Synchro System performs flawlessly on the brightest of days. The Yashica Samurai will provide flash when it's needed to eliminate undesirable shadows. Take a picture anytime, when the sun is directly overhead, shining from the side, or even directly in front of you. The Samurai will automatically control the exposure setting and activate the flash as needed. No more midday disappointments, your photographs will always turn out right.

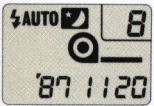


You Call The Shots, The Shutter's Always Ready



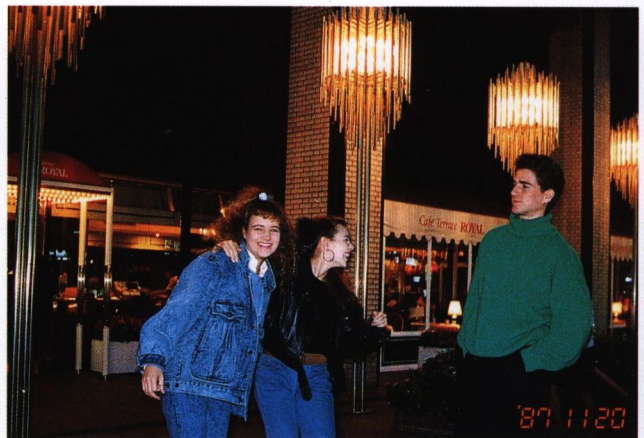
It's A Camera Lover's Dream Come True!

The Yashica Samurai's programmed electronic shutter (1/500 sec. — 2 sec.) offers a wide range of photographic possibilities. It's a camera lover's dream come true! You can shoot in very low light without flash using the Night Scene Mode, with shutter speeds as slow as 2 seconds. Catch that romantic moment in a softly lit room; the Samurai takes care of the work while you enjoy the evening.



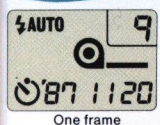
Night Time Camera Fun

Make the excitement of a night on the town last forever. Preserve that memorable evening with an Automatic Flash Mode that makes perfect flash photography effortless. The Slow-Shutter Synchro-Flash Mode combines a slow shutter speed with flash so that nothing in your composition is left out. Flash illuminates the subject while the slow-shutter speed keeps background objects distinct. Furthermore, the Samurai adjusts the dispersion of the flash automatically to match the angle of the zoom lens, from wide-angle to telephoto. And you'll never miss a shot, because the quick-charge flash is ready again in only 2.5 seconds.

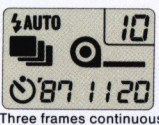


● The date in this picture is simulated.

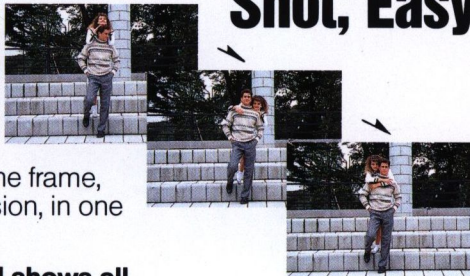
The Performance To Make Every Shot, Easy



One frame



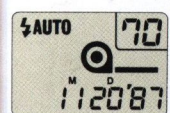
Three frames continuous



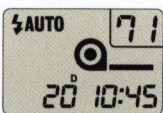
● **The 3-frame continuous self-timer** allows you to take one frame, or three frames in rapid succession, in one second intervals.

● **The easy-to-read LCD panel shows all operating modes and vital information**, such as the date; film loading, winding and rewinding, and battery status; Shooting Mode; Drive mode; exposure counter; etc. in large, easy-to-read symbols and letters.

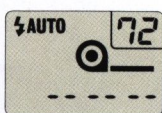
● **Print the time or date on your pictures** with the option of changing the order of the year, month or day.



Month/day/year*

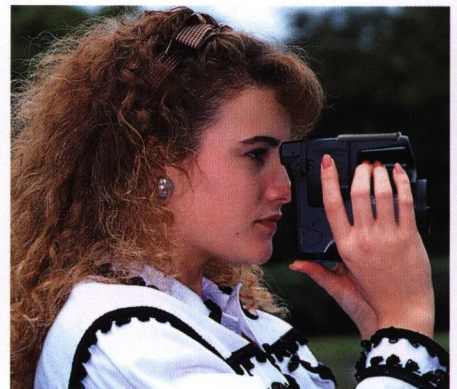


Day/hour/minute



No recording

*The order of these can be changed.



● **The Long Eyepoint SLR viewfinder** without parallax gives you a clear view of everything while shooting. This is especially convenient for people who wear glasses.

● **The single-lens reflex viewfinder (TTL) without parallax** has a built-in diopter adjuster (+1D to -4D).

● **Fully-automatic film operations** are absolutely effortless. Film is automatically loaded, wound and rewind, and stops rewinding automatically when the film is rewind.

● **Automatic film set-up** for DX film is between ISO 50 and 3200. It is set automatically to ISO 100 when non-DX film is loaded.

Not Just Thought Up, Thought Out

The Yashica Samurai Development Concept

We are entering an age when photographers will no longer be satisfied with compact cameras that provide less creative photographic opportunity than is available from large SLRs. To meet the needs of photographers in this new era, we have created a compact SLR camera with a large-aperture (fast) 3X power zoom which unifies the benefits of both SLRs and compact cameras. As a unique, vertically held camera, the Samurai dispels all preconceived notions of how a still camera should look and feel. It is so sophisticated yet so rational in construction, so sleek and yet functional in design, that it has revolutionized photography. It is an SLR that packs total photographic power and creativity into a compact size, and places everything at the photographer's fingertips. It is the one and only Samurai.



SPD CELL

FLASH

"WIDE" BUTTON

"TELE" BUTTON

WINDING MOTOR

SHUTTER RELEASE

MAIN MIRROR

BETWEEN-THE-LENS
SHUTTER

AF MODULE

BATTERY

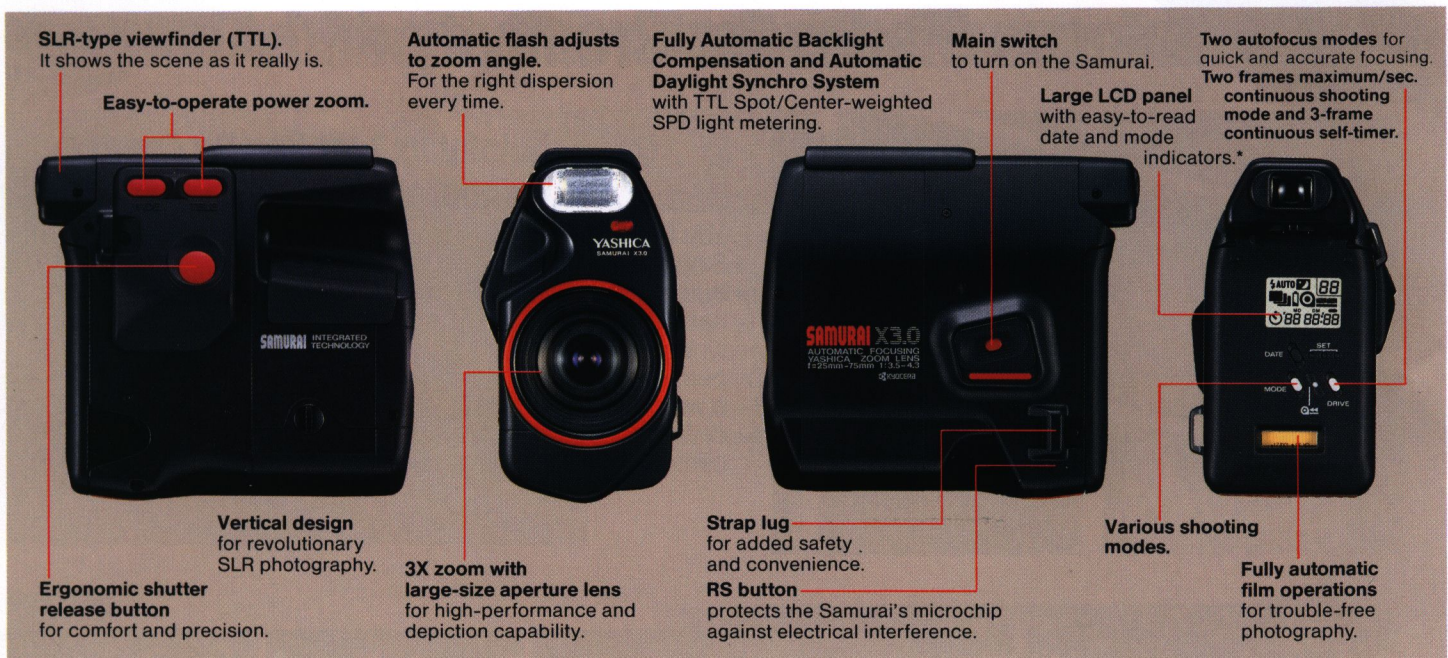
ZOOM LENS

YASHICA SAMURAI

3X ZOOM COMPACT SLR CAMERA



The Samurai is available in three different color schemes: Red, Green and Black.



*All indications will not appear simultaneously under actual operating conditions.

Specifications

Type: Lens-shutter, auto-focus SLR camera with zoom lens.
Negative Size: 17 x 24 mm
Lens: Zoom lens 25 – 75 mm F3.5 – 4.3 (14 elements in 13 groups).
Shutter: Programmed electronic shutter (1/500 – 2 sec.)
Shutter Release: Electromagnetic release.
Exposure Control: Programmed automatic exposure.
Metering System: TTL center-weighted light metering with SPD cell, automatic switchover to spot metering.
Metering Range: EV 3 – 18 (ISO 100).
Film Speed Setting: Automatic with DX films (automatic setting for ISO 50, 100, 200, 400, 800, 1600 and 3200 DX films; for DX films with intermediate ISO ratings, the film speed is set to a lower ISO number).
 For non-DX films and DX films with speeds higher than ISO 3200 or lower than ISO 50, the film speed is automatically set to ISO 100.
Auto-focus System: TTL phase difference detection. Focusing is effected by depressing the shutter release halfway; green lamp turns on when the subject is in sharp focus.
Focusing Range: 1 m (3.3 ft.) – ∞ (infinity).
Auto-focus Sensing Range: EV 3 – 18 (ISO 100).
Focus Lock: Focus is locked by depressing the shutter release halfway after the lens is focused on the subject (except for continuous shooting).
AE Lock: Exposure is locked by depressing the shutter release halfway after the lens is focused on the subject (except for continuous shooting).

Exposure Compensation: Automatic compensation for backlit subjects; provided with automatic daylight flash capability.
Viewfinder: Single-lens-reflex viewfinder with provision for diopter adjustment (+1D – -4D), field of view . . . 83 %, magnification . . . 0.5X – 1.52X (at infinity)
Display in Viewfinder: Sharp-focus lamp (turns on when the subject is in sharp focus, and blinks when focusing is not possible), flash indicator lamp (turns on to indicate that the flash will fire automatically, and blinks while the flash is charging).
Display Panel: Automatic flash activation mode, Night scene mode, Slow-shutter synchro-flash mode, Exposure counter, Self-timer shooting, Continuous shooting, Continuous three-frame shooting by self-timer, Film transport/rewind mark, Date display, Battery check mark.
Film Advance: Automatic film advance with built-in motor, auto loading, automatic first frame positioning, continuous shooting up to max. 2 frames/sec. (not including the time for AF operation, according to our testing standards).
Film Rewinding: Auto-return, auto-stop: film can be rewound in the middle of a roll with manual rewind button.
Exposure Counter: Automatic resetting, additive type; counts up to 99.

Self-timer: Quartz-controlled electronic self-timer with about 10-sec. delay provided with self-timer lamp; cancelable after it was once started.
Flash: Flashmatic system coupled to zooming operation, 1 – 3 m (3.3 – 9.8 ft.) shooting range (ISO 100), about 2.5-sec. recycle time.
Power Source: One 6-volt lithium battery (2CR5) for camera operation; built-in lithium battery for memory backup.
 A 6V lithium battery provides power for exposing about 1000 frames when half of the pictures are taken with flash (according to our testing standards).
Battery Check: Battery check mark blinks when battery voltage is low.
Number of Pictures Taken: Number of pictures which can be taken on a roll of 35 mm film – 12-exposure film . . . 24 frames; 24-exposure film . . . 48 frames; 36-exposure film . . . 72 frames.
Dating Unit: Built-in quartz clock with liquid crystal display; dates and time up to the year 2019 can be printed; dating modes – year-month-day, day-hour-minute, no print, month-day-year, day-month-year; automatic correction of date and time.
Dimensions: 67(W) x 119.5(H) x 126(D) mm (2.6" x 4.7" x 5.0")
Weight: 567 g (20.0 oz.) (without battery)

• Specifications and design are subject to change without notice.



KYOCERA CORPORATION

Optical Equipments Division
 27-8, 6-chome Jingumae, Shibuya-ku, Tokyo 150, Japan
 Tel: (03) 797-4631
YASHICA INC., USA Main Office
 100 Randolph Road, CN 6802, Somerset, New Jersey 08873-1284
 Tel: (201) 560-0060
YASHICA INC., Midwestern Regional Office
 945B North Edgewood Ave., Wood Dale, Illinois 60191, U.S.A.
 Tel: (312) 250-0591
YASHICA INC., Western Regional Office
 344 Mira Loma Avenue, Glendale, California 91204, U.S.A.
 Tel: (818) 247-2140
KYOCERA CANADA INC.
 7470 Bath Road, Mississauga, Ontario, L4T 1L2, Canada
 Tel: (416) 671-4300

YASHICA Kyocera GmbH
 Eiffestraße 76, D-2000 Hamburg 26, West Germany
 Tel: (040) 2515070
YASHICA Handelsesg. mbH
 Rustenschacherallee 38, A-1020 Wien, Austria
 Tel: (0222) 72-34-72, 73-81-27
YASHICA AG.
 Zürcherstrasse 73, CH-8800 Thalwil, Switzerland
 Tel: (01) 720 34 34
YASHICA DO BRASIL INDUSTRIA E COMERCIO LTDA.
 Rua Cruz e Souza 59, Acilmaçao, São Paulo, Bras
 Tel: 283-4244
UNIVERSAL OPTICAL INDUSTRIES LTD.
 14/FL Piazza Industrial Building, 133 Hol Bun Road, Kwun Tong, Kowloon, Hong Kong
 Tel: 3-435151

• "YASHICA" is a registered trademark of KYOCERA CORPORATION.
 38T8803MHI Y426-1 Printed in Japan