



Premo

Premo Cameras

1920

Eastman Kodak Company

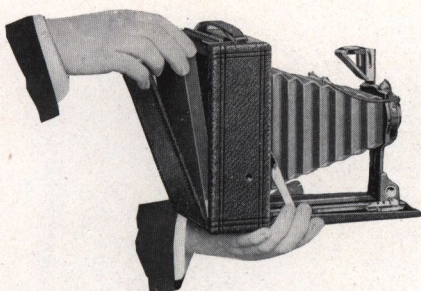
Rochester Optical Department

Rochester, N. Y.

Premo Cameras

Have been manufactured and have given continuous good service to the public for over thirty years. They not only have these long years of keen manufacturing experience behind them, but are also backed by the policy of the Eastman Kodak Company of allowing nothing to be placed on the market which will not do all that is claimed for it.

Anyone who is interested in amateur photography will find listed in this catalogue a line of plate, film pack, and roll film cameras from which a most satisfactory choice can be made, no matter what the requirements may be, and each model is efficient and dependable in every way.



The Premo Way

THE out-of-door and vacation days are rich in picture stories, which are yours for the taking; and in these easily made pictures you will live over again the pleasant incidents and occasions that will make this summer different from all your other summers.

Make these interesting pictures "the Premo way."

In the Premo line, there are many models, varying in size, style, lens and shutter equipment, as well as in price. There is a Premo for almost every requirement, and Premos are compact, light, very simple in operation, and unusually small for the size of the pictures they take.

Premo Film Packs combine Eastman film quality and convenience with the quickest and simplest method of daylight loading. Each pack contains twelve exposures. To load, open the camera back, drop in a pack, draw the safety cover and you are ready. Make your snap shots as rapidly as you wish, merely pulling out a paper tab after each exposure. Changing packs is the work of but a few seconds. Another helpful feature is that one or more films may be removed from the pack for development, before the entire pack is exposed.

The Premo Film Pack Adapter converts plate cameras into daylight loading film cameras, with the helpful advantage of focusing and composing each picture between exposures.

Kodak cartridge film convenience is provided with the Folding Cartridge Premos.

Eastman Kodak Company

Rochester Optical Department

ROCHESTER, N. Y.



Premo Junior

BECAUSE it makes such excellent pictures so easily the Premo Junior has, for years, brought lots of pleasure and satisfaction to adults as well as the youngsters.

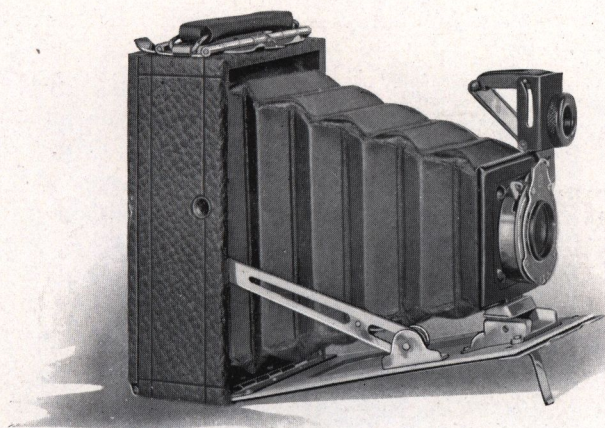
Both lens and shutter are always set, ready for use. Open the back, drop in a Premo Film Pack; arrange the picture with the horizontal or vertical finder, and press the shutter lever.

Although the Premo Junior is low in cost, great care is taken in its construction and in the selection of lenses having standard quality.

Details—Capacity: 12 exposures without reloading. Size of Camera: No. 1, $3\frac{1}{8} \times 4\frac{1}{2} \times 5\frac{3}{4}$ in.; No. 1A, $3\frac{1}{2} \times 5\frac{1}{2} \times 5\frac{7}{8}$ in. Weight: No. 1, 11 ozs.; No. 1A, 14 ozs. Shutters: Rotary Automatic, with diaphragm stops. Lens: No. 1, Meniscus; No. 1A, Meniscus Achromatic. Finders: two. Tripod sockets: two.

	No. 1 $2\frac{1}{4} \times 3\frac{1}{4}$	No. 1A $2\frac{1}{2} \times 4\frac{1}{4}$
<i>Prices</i>		
Premo Junior, as per details.....	\$3.32	\$4.63
Carrying Case.....	1.60	1.80
Premo Film Pack (12 exposures).....	.50	.60
Kodak Portrait Attachment.....	.75	.75

The Prices of Camera and Film Include the Excise-War Tax



Premoette Junior

A NEAT little pocket camera that makes $2\frac{1}{4} \times 3\frac{1}{4}$ pictures. It loads quickly in daylight with the Premo Film Pack containing twelve exposures, and after the folding bed is dropped, there is but one simple focusing adjustment.

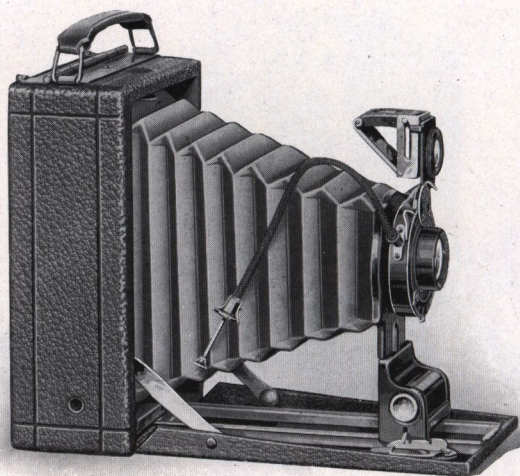
The carefully tested lens fitted to the Premoette Jr. produces negatives of such good quality that enlargements many times larger than the contact prints may be made.

Details—Dimensions: $1\frac{1}{2} \times 3 \times 4\frac{3}{4}$ in. Body: aluminum. Weight: 12 ozs. Finder: collapsible, reversible, brilliant. Tripod Sockets: two.

Prices

	No. 1 $2\frac{1}{4} \times 3\frac{1}{4}$
Premoette Jr. with Meniscus Achromatic Lens and No. 0 Kodak Ball Bearing Shutter.....	\$10.26
With R. R. Lens, No. 0 Shutter, no cable release.....	12.60
With Kodak Anastigmat Lens, <i>f</i> .7.7, No. 1 Shutter.....	19.24
Sole Leather Carrying Case.....	2.60
Kodak Portrait Attachment (See page 29).....	.75
Premo Film Pack (12 exposures).....	.50

The Prices of Camera and Film Include the Excise War Tax



Premoette Senior

A MODEL that provides three popular picture sizes; a choice of standard lens equipments; the most simple and rapid daylight loading principle—the Premo Film Pack, and finally—low cost for such excellent quality.

The Premoette Senior is supplied with either Rapid Rectilinear lens or Kodak Anastigmat $f.7.7$. While pictures of excellent quality are produced with the R. R. lens, the advantages of the anastigmat, other than its greater speed, are well known and more than balance the slight difference in cost between the two lenses. The Kodak Anastigmat $f.7.7$ is the equal of any anastigmat lens made in qualities of definition, depth and covering power.

All lens and shutter adjustments are simple in the extreme for making pictures under average conditions of amateur photography. The Premoette Senior will prove highly satisfactory to those who wish to make pictures of the persons, things and events which abound throughout the year.

The Kodak Ball Bearing shutter has time and bulb actions and retarded speeds of $\frac{1}{25}$, $\frac{1}{50}$ and $\frac{1}{100}$ seconds. It works with either cable or finger release and is unusually accurate and reliable.



The lens standard is exceptionally rigid, and is operated by an automatic clamp, making it an easy matter to draw the lens out to the focusing scale, where an automatic focusing lock provides for quick focusing of objects at any distance.

The Premo Film Pack principle of daylight loading and changing film greatly simplifies picture making for the beginner as well as the experienced in photography. Just open the back; drop in a pack; pull out a paper tab—and the first film will be in position for exposure. To change film after its exposure, pull out the next numbered paper tab. When the twelfth tab is drawn, the pack is sealed and may be removed in daylight. It's all very simple—and quick. The exposed films may then be developed in the Premo Film Pack Tank.

Fitted with the Kodak Portrait Attachment these cameras are excellent for home portraiture.

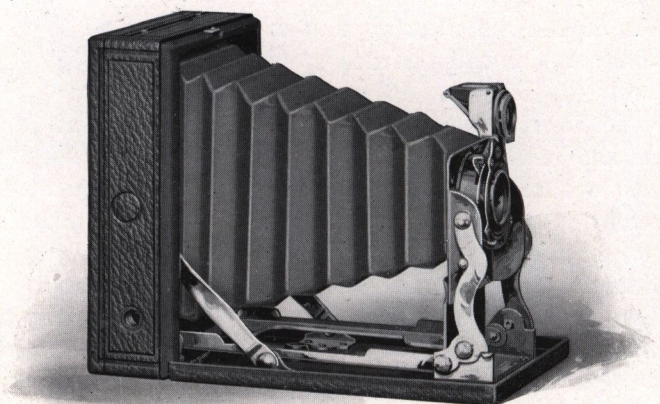
Premoette Seniors are covered with black grain leather and the metal parts are finished in nickel and black, making a very attractive camera.

Details—Capacity: 12 exposures. Body: seasoned wood. Bed and back: aluminum. Dimensions: $2\frac{1}{2} \times 4\frac{1}{4}$, $1\frac{1}{8} \times 3\frac{5}{8} \times 5\frac{5}{8}$ in.; $3\frac{1}{4} \times 4\frac{1}{4}$, $1\frac{11}{16} \times 4\frac{1}{16} \times 5\frac{5}{8}$ in.; 3A, $3\frac{1}{4} \times 5\frac{1}{2}$, $2\frac{1}{4} \times 4\frac{1}{2} \times 7\frac{1}{8}$ in. Weight: $2\frac{1}{2} \times 4\frac{1}{4}$, 21 ozs.; $3\frac{1}{4} \times 4\frac{1}{4}$, 22 ozs.; 3A, $3\frac{1}{4} \times 5\frac{1}{2}$, 35 ozs. Tripod sockets: two. Finder: reversible, brilliant, collapsible. Automatic standard clamp. Automatic focusing lock.

Prices

	$2\frac{1}{2} \times 4\frac{1}{4}$	$3\frac{1}{4} \times 4\frac{1}{4}$	$3\frac{1}{4} \times 5\frac{1}{2}$
Premoette Sr. with R. R. Lens and			
Ball Bearing Shutter.....	\$16.77	\$16.77	\$21.13
With Kodak Anastigmat Lens, <i>f</i> .7.7....	22.28	22.28	26.15
Sole Leather Carrying Case.....	4.00	4.00	5.25
Premo Film Pack (12 exposures)....	.60	.90	1.10
Kodak Portrait Attachment.....	.75	.75	.75

The Prices of Camera and Film Include the Excise War Tax



Pocket Premo

EASY to load—easy to use—easy to carry, briefly describes the attractive features of this little camera.

The Pocket Premo makes $2\frac{1}{4} \times 3\frac{1}{4}$ pictures, yet is only $1\frac{1}{4}$ inches in thickness, $3\frac{1}{4}$ inches wide and but a little over 4 inches long—small enough to be conveniently carried in a side pocket.

With all working parts fully enclosed when it is shut, the camera opens and snaps into focus automatically, when the front board is drawn down. Because it can be brought into use so quickly, it is possible to secure many unusual and interesting pictures that would be lost if adjustment or focus were necessary. The camera is quickly closed by pressing the two side arms and raising the bed, which causes the bellows and entire front to compactly refold within the camera body.

The Pocket Premo loads in daylight with Premo Film Packs—just insert a pack, pull out a paper tab, and you are ready—the simplest of all loading devices.

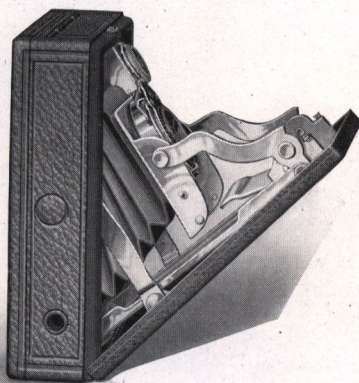
Maximum compactness in the construction of this model

is obtained by making the back of the camera collapsible. The back is extended to receive the Premo Film Pack and closes compactly when the Pack is removed. Development of the exposed films is greatly simplified for those wishing to do their own work, by the use of the Premo Film Pack Tank, which assures better negatives and therefore better pictures.

The meniscus achromatic lens fitted to the camera is of excellent quality and carefully adjusted. The pictures it makes are clear and sharp, and enlargements many times larger than the contact prints may be made from the negatives with the Kodak Enlarging Outfit or Brownie Enlarging Camera shown on page 36.

Shutter speeds of $\frac{1}{25}$ and $\frac{1}{50}$ of a second as well as bulb and time exposures are provided for with the Kodak Ball Bearing Shutter described on page 28.

Covered with a fine quality of grain leather and all metal parts heavily finished in nickel, the Pocket Premo is very attractive as well as a thoroughly practical pocket camera.

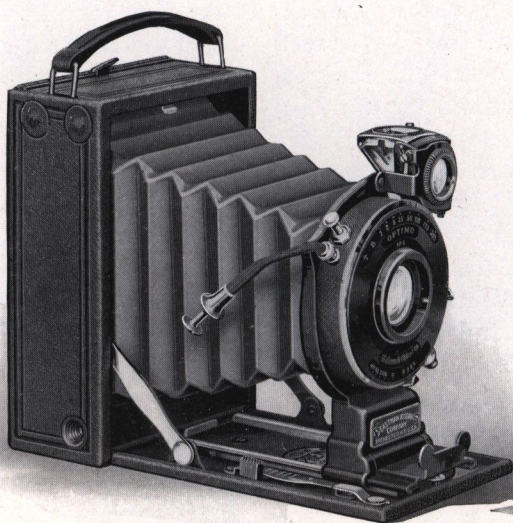


Details—Capacity: 12 exposures without reloading. Size of picture: $2\frac{1}{4} \times 3\frac{1}{4}$. Dimensions: $1\frac{1}{4} \times 3\frac{1}{4} \times 4\frac{9}{16}$. Weight: 18 ozs. Shutter: Kodak Ball Bearing. Lens: Meniscus Achromatic. Finder: Collapsible. Tripod Sockets: two.

Prices

Pocket Premo, as per details.....	$2\frac{1}{4} \times 3\frac{1}{4}$ \$13.85
Carrying Case to hold camera and Premo Film Pack.....	1.60
Premo Film Pack (12 exposures).....	.50
Kodak Portrait Attachment (See page 29).....	.75

The Prices of Camera and Film Include the Excise War Tax



Premo No. 12

AN attractive little pocket camera with features that are unusual in such small dimensions.

Focus as you please with scale and finder or with the full picture size ground glass. The provision for accurate focusing and arrangement of the composition of every picture made, is frequently very helpful in securing the best pictorial effect. If direct focusing and composition of the full size picture is not essential, the focusing pointer is set on the scale at the point indicating the estimated distance.

Quality and convenience plus the greatest simplicity and rapidity in daylight loading and film changing, are the advantages gained with the use of the Premo Film Pack and Premo Adapter. A special Roll Holder provides for the use of Eastman Graflex Film with the Premo No. 12.

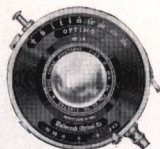
The instantaneous shutter speeds range from $\frac{1}{5}$ to $\frac{1}{300}$ of a second, according to the equipment selected, and there are

adjustments for bulb and time exposures. The pictures are $2\frac{1}{4} \times 3\frac{1}{4}$, made upon Cartridge Film or Premo Film Packs, but when the subject calls for the use of orthochromatic or panchromatic plates, or any kind of plate for that matter, the camera is equally ready.

The Premo No. 12 is regularly supplied with the Kodak Anastigmat *f*.7.7 lens, or Rapid Rectilinear lens, mounted in Kodak Ball Bearing Shutter. It is also supplied with a choice of other high grade Anastigmat Lenses.

With the high speed Anastigmat Lens and Optimo shutter equipment, permitting a wide range in speed, it is possible to secure successful pictures of unusual and interesting subjects, made under all kinds of conditions, as well as pictures of rapidly moving objects, all of which would be difficult to procure with lens and shutter fittings having less speed.

The Premo No. 12 is covered with a fine quality of grain leather handsomely embossed, and all metal parts are finished in nickel and black enamel.

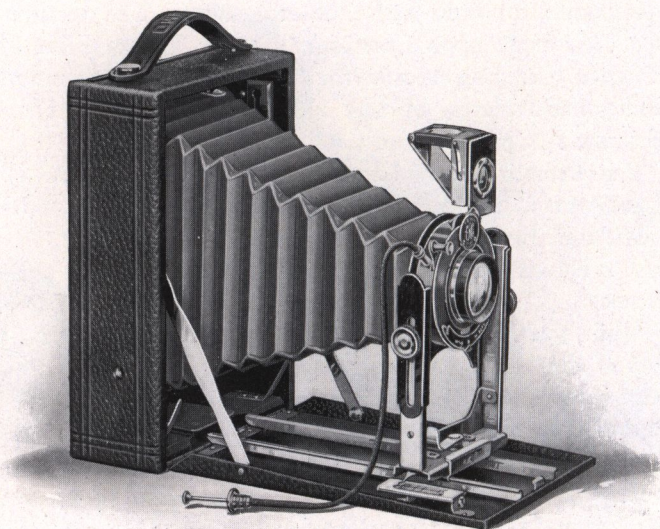


Details—Size of picture: $2\frac{1}{4} \times 3\frac{1}{4}$. Capacity: 12 film or one plate exposure. Box: aluminum. Bed: aluminum, with special lever focusing device. Finder: reversible, with revolving mask. Tripod sockets: two. Dimensions: $1\frac{5}{8} \times 3\frac{1}{4} \times 4\frac{5}{8}$ in. Weight: 24 ozs.

Prices

Premo No. 12 with Kodak Ball Bearing Shutter and R. R. Lens, including Film Pack Adapter and Plate Holder	$2\frac{1}{4} \times 3\frac{1}{4}$ \$23.55
With Kodak Anastigmat Lens, <i>f</i> .7.7, and B. B. Shutter..	28.78
With Optimo Shutter and Kodak Anastigmat Lens, <i>f</i> .6.3, $4\frac{3}{8}$ -inch focus.....	51.92
With B. & L. Kodak Anastigmat Lens, <i>f</i> .6.3, $4\frac{3}{8}$ -inch focus	65.17
With B. & L. Tessar, Ser. IIb Lens, <i>f</i> .6.3, $4\frac{3}{8}$ -inch focus..	80.24
With B. & L. Tessar, Ser. Ic Lens, <i>f</i> .4.5, $3\frac{1}{2}$ -inch focus...	82.36
Carrying Case, velvet lined.....	5.00
Single Plate Holders, each.....	.75
Premo Film Pack, 12 exposures.....	.50
Special Roll Holder, interchangeable with Plate Holder..	13.50

The Prices of Camera and Film Include the Excise War Tax

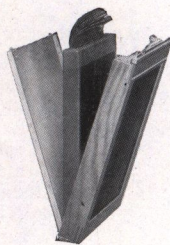


Premo No. 8

THIS camera goes a little farther than any of the preceding models of Premo cameras toward widening the scope of amateur work.

Plates or films, whichever is most convenient or best suited to the character of the subject, can be used interchangeably. Any of the brands of plates, including Orthochromatic, Panchromatic or the Rapid Graflex Plates, are loaded into the regular Premo Plate Holder. The Premo Film Pack Adapter, loaded with a Premo Film Pack, and used just like a plate holder, converts this camera into a daylight loading instrument, with all the advantages of film quality and convenience.

Every picture can be accurately focused and composed upon the ground glass focusing screen in the camera back—the rising and falling front serving to adjust the amount of



sky and foreground required in the picture. While direct focusing in full picture size is frequently desirable, it is not always convenient or possible, and the lens in such cases is focused with the graduated scale and either vertical or horizontal pictures are centered with the brilliant view finder.

The Premo No. 8 is made for the three larger popular size pictures— $3\frac{1}{4} \times 5\frac{1}{2}$, 4×5 and 5×7 inches. The proportions of these sizes are well suited for landscape or figure work.

Regularly fitted with standard Planatograph lens, and the Kodak Ball Bearing Shutter which is graduated for speeds of $\frac{1}{25}$, $\frac{1}{50}$ and $\frac{1}{100}$ of a second, as well as bulb and time exposures, the Premo No. 8 will prove highly satisfactory for everyday picture making.

At a slight additional cost, the model of the Premo No. 8 making $3\frac{1}{4} \times 5\frac{1}{2}$ pictures (post card size) is furnished with the Kodak Anastigmat *f*.7.7 lens, providing greater speed and excellent definition throughout the negatives.

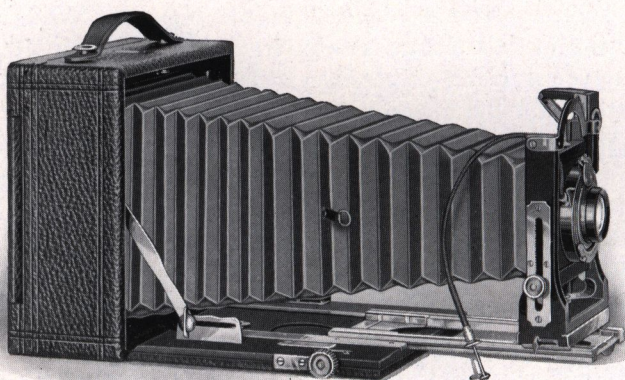
The body of the camera is made of seasoned wood, the front bed of aluminum. The body and bed are covered with black grain leather; the bellows are black and the metal parts are finished in polished nickel, giving the camera a neat, attractive appearance.

Details—Capacity: 12 film or 2 plate exposures. Body: seasoned wood, covered with leather. Standard: made of metal, with rising and falling front. Finder: reversible, brilliant, collapsible. Tripod Sockets: two. Dimensions: $3\frac{1}{4} \times 5\frac{1}{2}$, $2 \times 5 \times 7\frac{1}{4}$ in.; 4×5 , $2 \times 5\frac{1}{4} \times 6\frac{1}{2}$ in.; 5×7 , $2\frac{1}{4} \times 6\frac{1}{2} \times 8\frac{1}{2}$ in. Weight: $3\frac{1}{4} \times 5\frac{1}{2}$, 34 ozs.; 4×5 , 30 ozs.; 5×7 , 42 ozs. Carrying Case: imitation leather, with compartments for holders.

Prices

	4x5	3A 3¼x5½	5x7
Premo No. 8, with Planatograph Lens, Kodak Ball Bearing Shutter, Car- rying Case and Plate Holder.....	\$25.25	\$25.25	\$36.30
With Kodak Anastigmat Lens, <i>f</i> .7.7..		30.27	
Premo Film Pack Adapter.....	2.00	2.00	3.00
Premo Film Pack (12 exposures)....	1.10	1.10	1.90
Kodak Portrait Attachment.....	.75	.75	.75

The Prices of Camera and Film Include the Excise War Tax



Premo No. 9

THE bellows capacity of the Premo No. 9 permits the closer approach required for great detail, and for copying to nearly full size, with the regular lens equipment. It also accommodates the long focus combinations of the Planatograph lens, used for large reproductions of distant objects, and for securing better perspective in pictures of small subjects—that is, pictures that show each part in correct relative size and proportion.

The Swing Bed, Reversible Back, Rising and Falling Front, and Focusing Pinion, adapt the camera to accurate photographic reproductions of architectural and similar subjects, and these adjustments are also helpful, if not essential, when making general views. When it is necessary to tilt the camera in order to properly include in the composition, tall buildings and like subjects, the vertical lines are accurately reproduced by a simple adjustment of the swing bed. If the required result cannot be obtained by tilting and adjusting the swing bed, with the back in vertical position, then the rising and falling front is brought into use for final vertical arrangement of the composition upon the ground glass panel. Fine focusing is

done with the rack and pinion which actuates the bed plate.

Plates or film, whichever is preferred, may be used in the Premo No. 9: Plates carried in the regular Premo Plate Holder; Premo Film Packs in the Premo Adapter, and 5 x 7 Eastman Professional Film in the 5 x 7 No. 1 Eastman View Holder.

The regular fitting of the Premo No. 9 comprises the Planatograph lens and the Kodak Ball Bearing Shutter. The 3A and 4 x 5 sizes are offered at a slight increase in price fitted with Kodak Anastigmat Lens *f*.7.7 and Kodak Ball Bearing Shutter. For those who wish greater lens and shutter speed, the Kodak Anastigmat *f*.6.3 and the Optimo Shutter, described on page 28, will be found highly efficient.

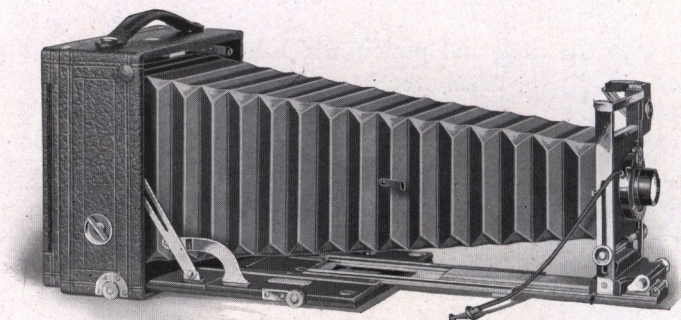
The covering of the body is selected black grain leather and the bed is in polished ebony finish. All metal parts are heavily nicked and polished. The Premo No. 9 is altogether a very attractive and practical camera for those wishing to do serious photographic work.

Details—Capacity: 12 film or 2 plate exposures. Body: seasoned wood, covered with grain leather. Bed: wood, finished in polished black ebony; rack and pinion for fine focusing; swing back. Back: spring catch, reversible. Front: Wood, with rising and falling front. Finder: brilliant, reversible, collapsible. Tripod Socket: one. Bellows: black leather; draw, 3¼ x 5½, 13 in.; 4 x 5, 13 in.; 5 x 7, 15¼ in. Dimensions: 3¼ x 5½, 3 x 7 x 7 in.; 4 x 5, 3 x 7 x 7 in.; 5 x 7, 2⅞ x 8¼ x 8¼ in. Weight: 3¼ x 5½, 63 ozs.; 4 x 5, 63 ozs.; 5 x 7, 76 ozs.

Prices

	4x5	3A 3¼x5½	5x7
Premo No. 9, with Planatograph Lens, Kodak Ball Bearing Shutter, Case and Holder.....	\$47.28	\$47.28	\$59.32
With Kodak Anastigmat Lens, <i>f</i> .7.7...	52.23	52.23	
With Kodak Anastigmat Lens, <i>f</i> .6.3, and Optimo Shutter.....	79.79	79.79	
With B. & L. Kodak Anastigmat Lens, <i>f</i> .6.3 and Optimo Shutter.....	No. 3 91.32	No. 4 95.96	No. 5 126.69
Premo Film Pack Adapter.....	2.00	2.00	3.00
Premo Film Pack (12 exposures)....	1.10	1.10	1.90
Kodak Portrait Attachment (See page 29)75	.75	.75

The Prices of Camera and Film Include the Excise War Tax



Premo No. 10

DESIGNED to meet the requirements of technical photographic work, the Premo No. 10 is equipped with every mechanical adjustment required.

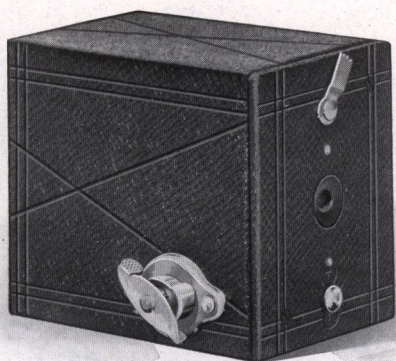
The long bellows draw will accommodate the single combinations of any lens system. Wide angle lenses may be used by dropping the bed and substituting the short supplementary bed furnished with the camera. The swing back and rising and falling front permit the correct composition of architectural subjects. Films or plates may be used with equal facility.

Details—Capacity: 12 film or 2 plate exposures. Body: hard wood, leather covered. Bed: wood, polished ebony finish. Back: spring catch, reversible. Swing: vertical; rack and pinion actuated, with locking device. Front: Metal, with rising and falling rack and pinion and locking device. Lens Board: removable, size $3\frac{1}{2} \times 3\frac{1}{2}$ in. Finder: Brilliant, reversible. Tripod Sockets: two. Carrying Case: sole leather, plush lined, with compartments for holders. Bellows: black leather; draw, 19 in. Dimensions: $4 \times 8\frac{1}{2} \times 8\frac{1}{2}$. Weight: $5\frac{1}{2}$ lbs.

Prices

	5x7
Premo No. 10, with Planatograph Lens and Kodak Ball Bearing Shutter, Carrying Case and Plate Holder....	\$ 96.33
With Bausch & Lomb Kodak Anastigmat Lens, <i>f</i> .6.3, No. 5 and Optimo Shutter.....	165.29
With B. & L. Protar VIIa Lens, <i>f</i> .7, No. 8 and Optimo Shutter	209.04
Premo Film Pack Adapter.....	3.00
Premo Film Pack.....	1.90

The Prices of Camera and Film Include the Excise War Tax



Cartridge Premo No. 00

THIS little camera was made especially for the youngsters, and has proven a source of pleasure for many thousands of boys and girls throughout the country. Photography is interesting and instructive. There is not only the fun every boy and girl will find in making pictures of their companions, games, and the like, but it is helpful in developing the observation.

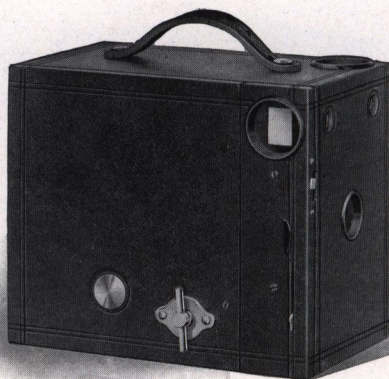
The camera is fitted with an excellent meniscus lens and automatic shutter, which is adjustable for "snap shots" or time exposures. It loads in daylight with a special six exposure film cartridge, and while not N. C. film, it is of standard Eastman quality.

Details—Size of pictures: $1\frac{1}{4} \times 1\frac{3}{4}$ in. Capacity: 6 exposures without reloading. Size of camera: $2 \times 2\frac{5}{8} \times 3\frac{1}{8}$ in. Lens: Meniscus, $\frac{2}{4}$ -inch focus. Shutter: Automatic for time and snap shot exposures.

Prices

Cartridge Premo No. 00, Meniscus Lens and Automatic Shutter	\$1.36
Eastman Film Cartridge, 6 exposures, No. 35.....	.15

The Prices of Camera and Film Include the Excise War Tax



Nos. 2 and 2A Cartridge Premos

THE lens used in these cameras is so fitted as to be always in focus and the shutter is always set ready for use. The Cartridge Premo will appeal to those who wish to make pictures on roll film in the easiest way and at minimum expense.

They take regular Eastman film cartridges and load and unload in full daylight. And the exposed film may be developed by the "daylight all the way" method.

Details—Size of pictures: No. 2, $2\frac{1}{4} \times 3\frac{1}{4}$ in.; No. 2A, $2\frac{1}{2} \times 4\frac{1}{4}$ in. Capacity: No. 2, 6 exposures without reloading; No. 2A, 12 exposures without reloading. Size of camera: No. 2, $5\frac{5}{8} \times 4 \times 3\frac{1}{4}$ in.; No. 2A, $3\frac{7}{16} \times 5\frac{1}{8} \times 6\frac{1}{8}$ in. Weight: No. 2, 13 ozs.; No. 2A, 21 ozs. Lens: No. 2, Meniscus; No. 2A, Meniscus Achromatic. Shutter: Eastman Rotary, with three stops. Two finders.

Prices

	No. 2	No. 2A
Cartridge Premo, as per details.....	\$3.33	\$4.58
Carrying Case, with shoulder strap.....	1.60	1.90
N. C. Film Cartridge, 12 exposures (No. 116)...		.60
Ditto, 6 exposures (No. 120 for No. 2; No. 116 for No. 2A).....	.25	.30
Kodak Portrait Attachment (See page 29).....	.75	.75

The Prices of Camera and Film Include the Excise War Tax



No. 2C Cartridge Premo

THE pictures this camera makes are of pleasing proportions— $2\frac{7}{8} \times 4\frac{7}{8}$ inches.

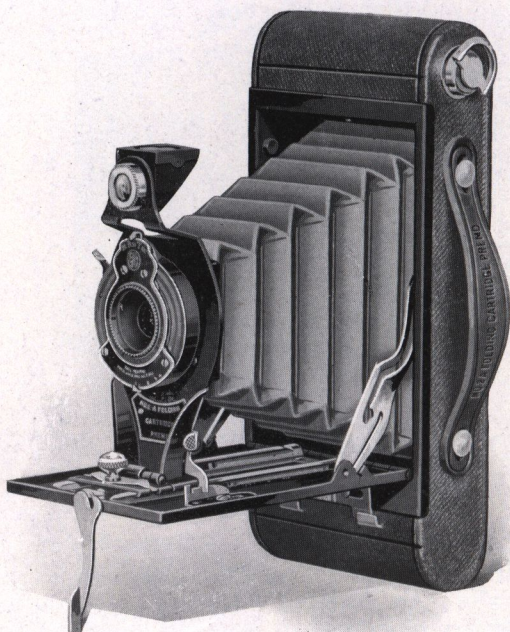
Fitted with a single lens of standard quality, and an automatic shutter, the camera is always ready for instant use, as no focusing or estimating of distances is required. The 2C Model is similar to the 2 and 2A sizes, and likewise uses daylight loading Eastman Cartridge Film.

Details—Capacity: 10 exposures without reloading. Size of camera: $3\frac{7}{8} \times 6 \times 7\frac{1}{4}$ in. Weight: 25 ozs. Lens: Meniscus Achromatic, $5\frac{1}{2}$ -inch focus. Shutter: Eastman Rotary, with three stops. Two finders. Two tripod sockets.

Prices

No. 2C Cartridge Premo, Meniscus Achromatic Lens,	
Eastman Rotary Shutter.....	\$5.97
Carrying Case with shoulder strap.....	2.00
N. C. Film Cartridge, 10 exposures (No. 130).....	.75
Ditto, 6 exposures (No. 130).....	.45
Kodak Portrait Attachment (See page 29).....	.75

The Prices of Camera and Film Include the Excise War Tax



Nos. 2 and 2A

Folding Cartridge Premos

ROLL film quality and convenience in a folding pocket camera of the most practical simplicity was the idea behind the Cartridge Premo.

These cameras are constructed on a very simple principle for loading and unloading in daylight with Eastman N. C. Film Cartridges, and they will appeal to those desiring a practical, compact, inexpensive camera that will meet the requirements of amateur picture making.

The proportions of the pictures lend themselves especially well to portraiture as well as to the average picture making

opportunities throughout the year. Fitted with a Kodak Portrait Attachment, either one of these cameras can be brought close up to the subject for home portraits.

The lenses fitted to these cameras are of such excellent quality that the amateur can easily make enlargements from favorite negatives, with the Brownie Enlarging Camera or Kodak Enlarging Camera described on page 36.

Alike in general appearance and operation, the 2 and 2A models differ in the size of the pictures they make, and slightly in lens and shutter equipment. The No. 2 is regularly fitted with a meniscus achromatic lens and a No. 0 Kodak Ball Bearing Shutter. This shutter may be adjusted for time and bulb exposures, and instantaneous speeds of $\frac{1}{25}$ and $\frac{1}{50}$ of a second. It has no cable release. The No. 2A is regularly fitted with a meniscus achromatic lens mounted in a No. 1 Kodak Ball Bearing Shutter which is *without* cable release. This shutter operates like the No. 0 but also has the speed of $\frac{1}{100}$ of a second. Both sizes are covered with a fine imitation leather.



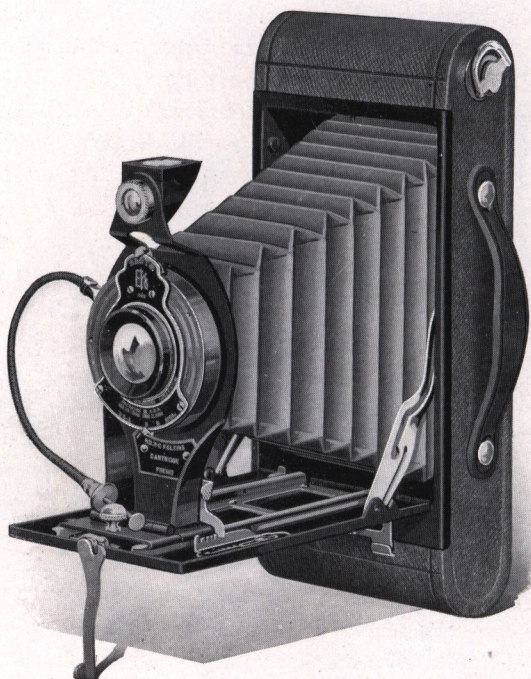
Details—No. 2: Size of pictures, $2\frac{1}{4} \times 3\frac{1}{4}$ in. Capacity: 6 exposures without reloading. Body: Steel. Size of camera: $1\frac{1}{4} \times 3\frac{1}{8} \times 6\frac{1}{2}$ in. Weight: 19 ozs. Lens: $3\frac{1}{2}$ -inch focus. Shutter: Kodak Ball Bearing. Reversible finder, two tripod sockets, automatic focusing lock, black leather bellows.

No. 2A: Size of pictures, $2\frac{1}{2} \times 4\frac{1}{4}$ in. Capacity: 12 exposures without reloading. Body: steel. Size of camera: $1\frac{7}{16} \times 3\frac{3}{8} \times 7\frac{7}{8}$ in. Weight: 25 ozs. Lens: $4\frac{1}{4}$ -inch focus. Shutter: Kodak Ball Bearing (See page 28). Reversible finder, two tripod sockets, automatic focusing lock, black leather bellows.

Prices

	No. 2	No. 2A
Folding Cartridge Premo, Meniscus Achromatic	\$ 9.20	\$10.26
With R. R. Lens.....	11.02	12.67
Cartridge Premo Carrying Case.....	1.90	2.00
N. C. Film Cartridge, 12 exposures (No. 116) ..		.60
Ditto, 6 exposures (No. 120 for No. 2, No. 116 for No. 2A).....	.25	.30
Kodak Portrait Attachment (See page 29).....	.75	.75

The Prices of Camera and Film Include the Excise War Tax



Nos. 2C and 3A

Folding Cartridge Premos

THESE cameras load with standard Eastman N. C. Film Cartridges. This is not only an assurance of quality results, but it means that every process—loading, unloading and development of the film—can be performed in daylight, eliminating the dark room. And development of film by the time and temperature method, in a Kodak Film Tank, also means better negatives and better pictures.

Both sizes are supplied fitted with a single Meniscus Achromatic or Rapid Rectilinear lens, mounted in a No. 1 Kodak Ball

Bearing Shutter. The shutter operates at speeds of $\frac{1}{25}$, $\frac{1}{50}$ and $\frac{1}{100}$ of a second as well as bulb and time exposures.

The body of the camera is made of aluminum, which means strength and light weight. The standard is so formed as to be unusually rigid, and all metal parts are finished in polished nickel and black enamel. The camera body is covered with a fine imitation leather. The finder is reversible, and two tripod sockets are provided for prolonged exposures. The automatic focusing lock permits the lens to be instantly and securely set at any selected distance.

Carefully made of first quality material, these cameras receive the same rigid tests for reliability as are applied to all Eastman products. It is only through a long perfected factory organization and production in large quantities, that cameras of such exceptional quality may be offered at such moderate prices.

The shape of the negatives made by these cameras is very appropriate for portraiture. The Kodak Portrait Attachment adapts either of these cameras to home portraiture.

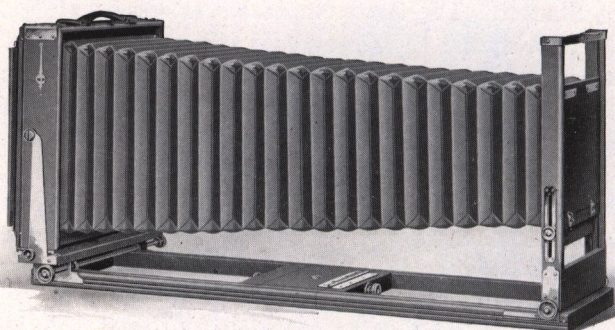
Details—No. 2C: Size of pictures, $2\frac{7}{8} \times 4\frac{7}{8}$ in. Capacity: 10 exposures without reloading. Body: aluminum. Size of camera: $1\frac{3}{4} \times 3\frac{3}{16} \times 8\frac{5}{8}$ in. Weight: 28 ozs. Lens: 5-inch focus. Shutter: Kodak Ball Bearing (See page 28).

No. 3A: Size of pictures, $3\frac{1}{4} \times 5\frac{1}{2}$ in. Capacity: 10 exposures without reloading. Body: aluminum. Size of camera: $1\frac{3}{4} \times 4\frac{7}{16} \times 9\frac{5}{16}$ in. Weight: 28 ozs. Lens: $5\frac{3}{8}$ -inch focus. Shutter: Kodak Ball Bearing.

Prices

	No. 2C	No. 3A
Folding Cartridge Premo, Meniscus Achromatic	\$14.15	\$15.81
Ditto, with R. R. Lens.....	16.83	19.17
Cartridge Premo Carrying Case.....	2.10	2.20
N. C. Film Cartridge, 10 exposures (No. 130 for No. 2C, No. 122 for 3A).....	.75	.90
Ditto, 6 exposures.....	.45	.55
Kodak Portrait Attachment (See page 29).....	.75	.75

The Prices of Camera and Film Include the Excise War Tax



Eastman View No. 1

THIS camera has double extensions—and both front and back of the camera are equipped with rack and pinion, so that it may be focused from either end. With the front of the camera set at, or near, the extreme edge of the front extension, the back of the camera can be racked forward for the use of extreme wide angle lenses. The rising and falling front is operated with a rack and pinion built into the front standards of the camera. The device locks securely at any point by merely pushing in the milled head of the pinion. The front board is removable, and is large enough to accommodate lenses of the highest speed and of a focal length within the bellows capacity of the camera.

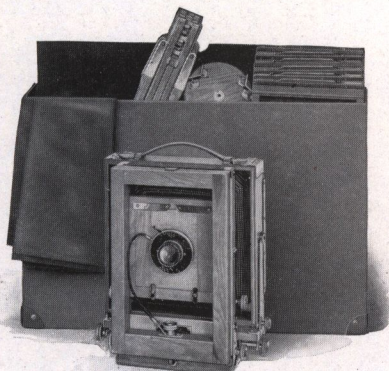
Both horizontal and vertical swings are provided. The back is reversible and furnished with a vertical cut-off board, so that two negatives may be made on one plate if desired. This cut-off may be easily removed for making whole plate exposures.

The automatic bellows support prevents sagging of the bellows at any degree of extension. The camera is made of the best quality cherry with mahogany finish, all metal parts of polished brass and the corners of the camera body are dove-tailed and reinforced by metal angle pieces. Built for practical

service, the Eastman View No. 1 will meet the requirements of anyone desiring a substantial view camera at medium cost.

The carrying case is of the combination style, having four compartments, one for the camera, one for the plate holders, one for focusing cloth, lenses and other accessories, and one for the tripod. This case is strongly made, with corners reinforced, and is provided with two webbing straps which entirely encircle it. The price includes the case and one holder. Unless a holder for Eastman Professional Film is specifically ordered, the Eastman View Plate Holder will be supplied.

For those who want a larger size view camera, we can furnish the Empire State Model in the 11 x 14 size.



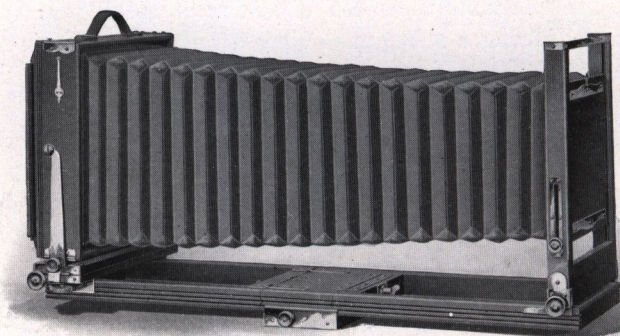
Details—Bellows: draw, 5 x 7, 22½ in.; 6½ x 8½, 26 in.; 8 x 10, 29 in. Weight: 5 x 7, 6 lbs.; 6½ x 8½, 8 lbs.; 8 x 10, 9½ lbs. Size of Lens Board: 5 x 7, 4¼ x 4¼ in.; 6½ x 8½, 4¾ x 4¾ in.; 8 x 10, 5¾ x 5¾ in. Canvas Carrying Case.

Prices

	5x7	6½x8½	8x10
Eastman View Camera No. 1, with Case and Holder.....	\$40.36	\$42.47	\$45.63
Eastman View No. 1, Complete Outfit* 67.90	78.41	87.71	
Complete Outfit, with Rapid Rectigraphic Lens.....	82.98	96.72	110.41
Extra Carrying Case.....	5.75	6.00	6.25
Extra Lens Board.....	.30	.40	.50
Eastman View Plate Holders.....	1.75	1.85	2.00
Eastman Professional Film Holders..	1.75	1.85	2.00
Empire State Camera, furnished in the 11 x 14 size only, including one Holder and Carrying Case.....			79.20

*Eastman View No. 1 Complete Outfit includes: Eastman View Camera No. 1, Voltas Lens, Automatic Shutter, six Plate or Film Holders, Combination Tripod, Focusing Cloth and Case to hold complete outfit.

The Prices of Cameras and Outfits Include the Excise War Tax



Eastman View No. 2

THIS camera is constructed with the idea of providing the greatest possible strength in a camera of this portable type. The front bed is built to accommodate the largest and heaviest lenses that are suitable for use with the camera. The lens board is raised or lowered for vertical adjustment of the image, by a quick acting rack and pinion, having a locking device. The front standard is very rigid, insuring true parallelism of the lens and recording plane, as well as freedom from vibration. The focusing pinion moves the front backward and forward with a smooth, firm action that may be regulated with just the required degree of tension.

Both the vertical and horizontal back swings are adjusted with independent rack and pinion, provided with friction locking device. There is also a plumb level to determine the correct degree of vertical swing adjustment.

When the subject requires the use of wide angle lenses, the front of the camera can be racked out to the end of the front extension bed, and the camera back may then be advanced into focus with the rear rack and pinion. A sliding block attached to the camera bed, is adjusted so that the camera is supported directly over the tripod head.

The focusing back is reversible from horizontal to vertical

position, and accepts Eastman Professional Film or Plate Holders. Vertical and horizontal cut-off boards provide for making four different negatives on one plate. These cut-off boards are removed when making full plate pictures.

Especial attention is called to the 7 x 11 size—a proportion which will prove very attractive to many workers. This camera has an especially wide front board with sliding arrangement which permits the centering of the lens on either half of the 7 x 11 plate when it is desired to make two exposures on one plate. The swing of this model is of unusual latitude to obtain its fullest value, for architectural work. Anticipating that most photographers will prefer to use Eastman Professional Film with this size camera, the Eastman Portrait Film Holder will be supplied with it unless otherwise specified.

The camera is made of mahogany and hand polished, with the exception of the extensions, which are of cherry. All corners are reinforced with polished brass angle pieces. The bellows of the Eastman View No. 2 is made of special bellows fabric, and an automatic spring device prevents sagging at any point of extension.

Details—Bellows: draw, 5 x 7, 23 in.; 6½ x 8½, 26½ in.; 8 x 10, 29½ in.; 7 x 11, 31 in. Weight: 5 x 7, 7 lbs.; 6½ x 8½, 10½ lbs.; 8 x 10, 11¼ lbs.; 7 x 11, 15½ lbs. Size of Lens Board: 5 x 7, 4½ x 4½ in.; 6½ x 8½, 6 x 6 in.; 8 x 10, 6 x 6 in.; 7 x 11, 6¼ x 13½ in.

Prices

	5x7	6½x8½	8x10	7x11
Eastman View Camera No. 2 with Case and Holder.....	\$52.70	\$55.85	\$57.94	\$63.18
Eastman View No. 2 Complete Outfit*	80.24	91.80	100.00	104.23
Complete Outfit, with Rapid Rectigraphic Lens.....	95.32	107.98	122.72	127.97
Extra Carrying Case.....	6.25	6.75	7.50	8.75
Extra Lens Board.....	.60	.75	.75	1.25
Eastman View Plate Holders..	1.75	1.85	2.00	2.00
Eastman Professional Film Holders	1.75	1.85	2.00	2.00

*Eastman View No. 2 Complete Outfit includes: Eastman View Camera No. 2, Voltas Lens, Automatic Shutter, six Eastman Professional Film or Plate Holders, Combination Tripod, Focusing Cloth, and Case to hold complete outfit. See illustration similar outfit, page 25.

The Prices of Cameras and Outfits Include the Excise War Tax

Kodak Ball Bearing Shutter

THIS shutter is automatic in its action, and does not require setting. Its leaves work on ball bearings, giving it smooth and reliable action, and as they open and close in a star shaped aperture, the maximum of light is admitted. It is operated by cable release or finger release, and has Iris Diaphragm. The illustration shows the shutter as fitted to cameras equipped with Kodak Anastigmat lens, *f*.7.7, but all models work upon the same general system. The No. 0 shutter regularly fitted to Premoette Jr., with single or R. R. lens; Pocket Premo, and Folding Cartridge Premo No. 2, has time and bulb actions and indicated speeds of $\frac{1}{25}$ and $\frac{1}{50}$ second, but no cable release.

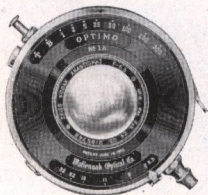


The No. 1 shutter supplied with Premoette Jr., *f*.7.7 lens; 2A Folding Cartridge Premos, Single or R. R. lens, Nos. 1A and 3 Premoette Senior, R. R. and *f*.7.7 lens, operates at $\frac{1}{25}$, $\frac{1}{50}$ and $\frac{1}{100}$ of a second and has cable release in all cases excepting as fitted to 2A Folding Cartridge Premo, where it has finger release only.

Optimo Shutter

This shutter is recommended particularly where anastigmat lenses are used, as it is constructed to attain the highest possible speed for a between-the-lens shutter. It is a shutter of the setting type, leaves opening in star shape, and besides time and bulb exposure actions, has variable indicated speeds of 1, $\frac{1}{2}$, $\frac{1}{5}$, $\frac{1}{25}$, $\frac{1}{50}$, $\frac{1}{100}$, $\frac{1}{200}$, and $\frac{1}{300}$ seconds. A turn of the outer milled disc, on which is engraved an arrow indicator, makes adjustment for any desired exposure. The Iris Diaphragm is regulated by a separate indicator. The shutter operates with cable or finger release.

The Optimo shutter is supplied with special lens equipment on the Premo No. 12 and the Premos Nos. 9 and 10.



Kodak Portrait Attachments and Kodak Sky and Color Filters

THE Kodak Portrait Attachment is simply an extra lens, which slips on the front of the regular lens, and permits working with the camera close to the subject, thereby making a larger image than could otherwise be made. It is especially useful in making home portraits, flower studies, etc.

The upper half of the *Kodak Sky Filter* is stained yellow, and serves to equalize the intensity of light transmitted by sky and foreground in landscape photography. The *Kodak Color Filter* is stained yellow throughout, and serves to equalize the light values of different colors.

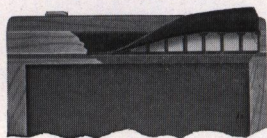
Prices

Order by No.	Camera	Lens	Portrait Attach- ment	Sky & Color Filter
0	For No. 1 Premo Jr.	Single lens	\$.75	\$.75
0	" " 1A "	Single "	.75	.75
3	" " 3 "	Single "	.75	1.15
3	" " 1 Premoette Jr.	f.7.7 "	.75	1.15
8	" " 1 "	Single "	.75	.75
8	" " 1 "	R. R. "	.75	.75
3	Premoette Sr. 2½ x 4¼	R. R. "	.75	1.15
13	" " 2½ x 4¼	f.7.7 "	.75	1.15
3	" " 3¼ x 4¼	R. R. "	.75	1.15
13	" " 3¼ x 4¼	f.7.7 "	.75	1.15
5	" " 3¼ x 5½	R. R. "	.75	1.50
7	" " 3¼ x 5½	f.7.7 "	.75	1.50
8	Pocket Premo	Single "	.75	.75
8	No. 12 "	R. R. "	.75	.75
6	" " 12 "	Kodak Anastigmat f.6.3	.75	1.15
6	" " 12 "	All B. & L. Anastigmats	.75	1.15
3	" " 12 "	f.7.7 lens	.75	1.15
5	" " 8 "	R. R. "	.75	1.50
5	" " 8 "	3¼ x 5½ R. R. "	.75	1.50
7	" " 8 "	5 x 7 R. R. "	.75	1.50
5	" " 8 "	3¼ x 5½ f.7.7 "	.75	1.50
5	" " 9 "	4 x 5 R. R. "	.75	1.50
5	" " 9 "	3¼ x 5½ R. R. "	.75	1.50
7	" " 9 "	5 x 7 R. R. "	.75	1.50
7	" " 9 "	4 x 5 f.7.7 "	.75	1.50
5	" " 9 "	3¼ x 5½ f.7.7 "	.75	1.50
5	" " 10 "	5 x 7 R. R. "	.75	1.50
0	" " 2 Box Cartridge Premo	Single "	.75	.75
0	" " 2A "	Single "	.75	.75
4	" " 2C "	Single "	.75	1.15
8	" " 2 Folding Cartridge Premo	Single "	.75	.75
8	" " 2 "	R. R. "	.75	.75
3	" " 2A "	Single "	.75	1.15
3	" " 2A "	R. R. "	.75	1.15
5	" " 2C "	Single "	.75	1.50
5	" " 2C "	R. R. "	.75	1.50
5	" " 3A "	Single "	.75	1.50
5	" " 3A "	R. R. "	.75	1.50

Plate Holders

Premo Plate Holder

Premo holders are made absolutely light tight by a spring finger light-lock. This device is constructed of tempered, non-corrosive metal with independently operating spring fingers overlaid with a closely woven, specially prepared fabric. The dark slide can be inserted or withdrawn without admitting light to the plate. Fitted with lacquered press-board slides that will not electrify, collect dust, crack or split.



2¼ x 3¼ (Single) \$.75	3¼ x 5½.... \$1.50	5 x 7 \$1.75
3¼ x 4¼ 1.50	4 x 5 1.50	6½ x 8½.... 2.00

Eastman View Plate Holder

These holders are made with bottom flap, avoiding all danger of plates falling out. They are strongly constructed, have patented spring finger light-lock, and are made to fit both models of the Eastman View Camera. Slides are of lacquered press-board.

5 x 7 \$1.75	8 x 10..... \$2.00	7 x 11..... \$2.00
6½ x 8½..... 1.85		

Universal Plate Holder

Made in the same style as the Eastman View Holder but to fit Empire State and Premo View Cameras.

5 x 7 \$1.75	8 x 10..... \$2.00	14 x 17..... \$6.00
6½ x 8½..... 1.85	11 x 14..... 5.00	

Eastman Professional Film Holder

Provided to fit Eastman View, Universal and Premo View Cameras. Give name of camera when ordering.

5 x 7 \$1.75	8 x 10..... \$2.00	11 x 14..... \$5.00
6½ x 8½..... 1.85	7 x 11..... 2.00	

The Premo Film Pack Adapter

Converts a plate camera into a daylight loading Film Camera. Loads with Premo Film Packs, listed on page 31, and is used just like a plate holder permitting focusing and composition between exposures.

Size	Price	Size	Price
2¼ x 3¼.....	\$1.50	3A (3¼ x 5½).....	\$2.00
3¼ x 4¼.....	1.50	4 x 5	2.00
3 x 5¼.....	2.00	5 x 7	3.00

Film, Plates and Paper

Premo Film Packs



Quality and convenience—plus the greatest simplicity and rapidity in daylight loading and film changing, are the exceptional advantages of the Premo Film Pack.

Each Pack contains 12 exposures of Eastman N. C. Film, which is non-curling, non-halation, and properly orthochromatic. The gradation and

fineness of grain is of the highest quality.

Size		Per Pack
1 3/4 x 2 3/8	No. 300	\$.30
2 1/4 x 3 1/4	No. 320	.50
2 1/2 x 4 1/4	No. 316	.60
3 1/4 x 4 1/4	No. 318	.90
3 x 5 1/4	No. 342	1.00
3 1/4 x 5 1/2	No. 322	1.10
4 x 5	No. 323	1.10
5 x 7	No. 315	1.90

The Prices of Premo Film Packs Include the Excise War Tax

Eastman Professional Films

Eastman Portrait, Commercial, Commercial Ortho, and Process Films

Size	Price per Dozen	Size	Price per Dozen	Size	Price per Dozen
4 1/4 x 6 1/2	\$1.10	8 x 10	\$2.75	10 x 12	\$4.85
5 x 7	1.25	7 x 11	2.75	11 x 14	7.00
6 1/2 x 8 1/2	1.90	7 x 17	4.85	12 x 20	11.00

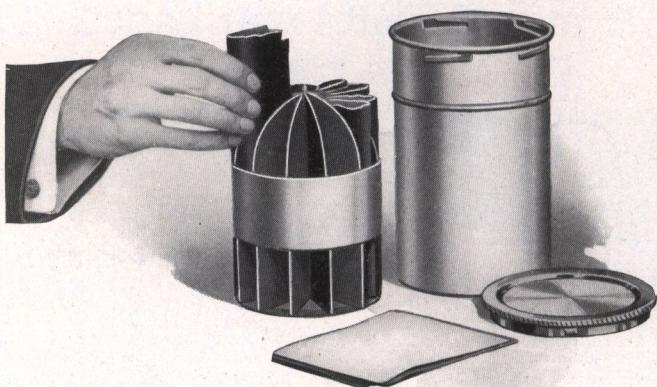
Glass Dry Plates

Single Coated Seed, Standard or Stanley

Size	Price per Dozen	Size	Price per Dozen	Size	Price per Dozen
2 1/4 x 3 1/4	\$.40	4 x 5	\$.75	5 x 8	\$1.45
3 1/4 x 4 1/4	.55	4 1/4 x 6 1/2	1.10	6 1/2 x 8 1/2	1.90
3 1/4 x 5 1/2	.75	5 x 7	1.25	8 x 10	2.75

Velox Paper

Size	Single Weight		Double Weight	
	Doz.	1/2 Gross	Doz.	1/2 Gross
2 1/4 x 3 1/4	\$.12	\$1.10	\$.15	\$1.40
2 1/4 x 3 3/4	.12	1.10	.15	1.40
2 1/2 x 4 1/4	.15	1.35	.20	1.70
3 1/4 x 4 1/4	.20	1.75	.25	2.20
2 7/8 x 4 7/8	.20	1.75	.25	2.20
3 1/4 x 5 1/2	.20	2.00	.25	2.50
4 x 5	.25	2.30	.30	2.90
5 x 7	.40	\$2.10 3.90	.50	\$2.60 4.90



Premo Film Pack Tank

THE modern method of development greatly simplifies negative making for anyone wishing to do their own work. But more important still, it makes better negatives, which lead directly to better pictures.

Considerable thought and care are usually exercised in making pictures on the vacation trip and about the home, and to the pleasure of picture making can be added the pleasure of negative making, with the Premo Film Pack Tank.

The entire outfit is self-contained and can be easily carried in a suitcase, making it possible to develop negatives immediately after exposure, and before leaving the locality in which the exposures were made.

The Premo Film Pack Tank consists of two pieces—a metal receiver, or cage for the films, and a tank with cover, for the developing solution. The cage is divided into twelve compartments;—in the 5 x 7 size, six compartments—each accommodating one film. As the film is taken from the pack, it is slightly bent and slipped into its respective compartment. When all the compartments are filled, the cage is placed in the tank, which has previously been filled with a developing solution of definite strength, at a definite temperature. The top of the tank is then attached, and the films are permitted to

develop for a definite time. It is only necessary to follow the simple instructions provided. No further attention is necessary except to turn the tank end for end several times during the period of development. At the expiration of this period, the tank is opened, the cage removed and the films rinsed in a tray of water, then transferred to a fixing bath. A few minutes thereafter, development of the negatives is completed.

The operation of removing films from the pack and loading into the developing cage, must be done in a darkened room, with the aid of ruby lamp that is photographically safe. During the day, any darkened closet will suffice; at night, almost any room with the shades drawn, will answer. Any of the dark room lamps listed on page 41, will give a photographically safe light.

Loading the films into the cage requires but a few minutes, and as soon as the top is placed on the tank, it may be brought into the white light for the period of the development. Night is really an ideal time to develop films as the negatives can be fixed and washed in a short time, and will be dry in the morning, ready for print making.

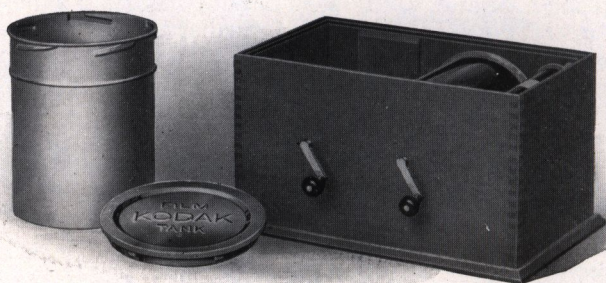
If it is desired to develop less than a dozen films, one merely removes from the pack as many films as have been exposed, places them in the cage, and proceeds in the same manner as described above.

The cage of the No. 1 Tank is slightly different from that shown in the illustration, but the method of loading is the same and the results are just as dependable in every respect.

Particular attention is called to the necessity of using Premo Tank developing powders for normal development in Premo Film Pack Tanks. If Kodak Tank powders are used, a longer time for development must be given.

Prices

Premo Film Pack Tank No. 1, for 12 $1\frac{3}{4} \times 2\frac{3}{8}$ or $2\frac{1}{4} \times 3\frac{3}{4}$ films	\$1.75
Ditto, No. 2, for 12 $2\frac{1}{2} \times 4\frac{1}{4}$, $3\frac{1}{4} \times 4\frac{1}{4}$, $3 \times 5\frac{1}{4}$, $3\frac{1}{4} \times 5\frac{1}{2}$ or 4×5 films.....	4.00
Ditto, No. 3, for 6 5×7 films.....	4.50
Premo Tank Developing Powders, in packages of 6, No. 125
Premo Tank Developing Powders, in packages of 6, No. 235
Premo Tank Developing Powders, in packages of 6, No. 350
Kodak Acid Fixing Powder, per 1 pound package.....	.35
Ditto, per $\frac{1}{2}$ pound package.....	.20
Ditto, per $\frac{1}{4}$ pound package.....	.15



Kodak Film Tank

FOR the convenience of those using Eastman Daylight Loading Film cartridges—completing the “daylight all the way” method of negative making. The Kodak Film Tank develops roll film automatically and in broad daylight, eliminating the necessity for a dark room. The film cartridge to be developed is attached to a bracket in the winding box, to which the cover is then attached, and in this darkened chamber the exposed film is wound into a light proof apron which fully protects it, permitting safe removal from the winding box. The apron containing the film is then lowered into the metal solution cup, filled with a standard developer, at a certain temperature. The metal cover is attached and the film is permitted to develop for twenty minutes. After development, the film is removed from the apron for fixing and washing.

It is all very simple and the result is—better negatives and better pictures.

Prices

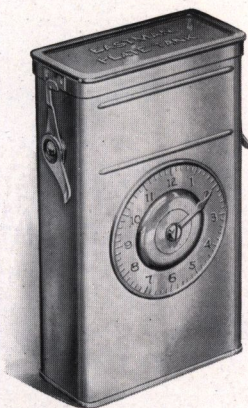
Brownie Kodak Film Tank, for use with No. 2 and No. 2 Folding Cartridge Premo cartridges, complete..	\$4.00
2½-inch Kodak Film Tank, for use with all cartridges having a film width of 2½ inches or less, complete.....	5.00
3½-inch Kodak Film Tank, for use with all Kodak and Brownie cartridges having a film width of 3½ inches or less, complete.....	6.00
Flexible Rubber Tray, for 3½-inch Kodak Film Tank....	2.50
Kodak Tank Developer Powders for Brownie Kodak Film Tank, per package ½ dozen.....	.20
Ditto, for 2½-inch tank, per package, ½ dozen.....	.25
Ditto, for 3½-inch tank, per package, ½ dozen.....	.25

Eastman Plate Tank

PLATES may be developed in the Eastman Plate Tank with the same certainty of excellent results obtained with films developed in the Premo Film Pack or Kodak Tank. The method is precisely the same, with of course such differences as are necessary because of the physical differences between films and plates.

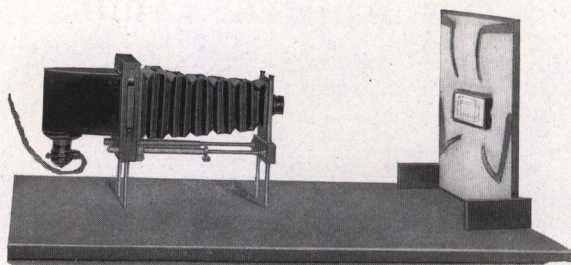
It consists of a metal solution cup, a cage for holding twelve (or less) plates and a simple device for loading plates into the cage. In the $3\frac{1}{4} \times 4\frac{1}{4}$, $3\frac{1}{4} \times 5\frac{1}{2}$ and 4×5 sizes, the cage of plates may be developed in a Premo Film Pack Tank, so that one using a Premo that takes films or plates and has also a Premo Film Pack Tank, needs only to purchase the cage of the plate tank for the development of his plates.

It is thus apparent that the owner of a Premo plate camera can use films or plates in his camera and also can avail himself of the advantages of tank development with equal facility.



Prices

Eastman Plate Tank for 4×5 , $3\frac{1}{4} \times 5\frac{1}{2}$ or smaller plates, including Solution Cup, Plate Cage, Loading Fixture and Adjustable Kit.....	\$4.00
Ditto, 5×7 , without Kit.....	6.00
Ditto, 8×10 , with Adjustable Kit.....	12.00
Adjustable Kit for 4×5 or $3\frac{1}{4} \times 5\frac{1}{2}$ Tank, to take smaller plates60
Kits for 5×7 Tank, to take $3\frac{1}{4} \times 5\frac{1}{2}$, $4\frac{1}{4} \times 6\frac{1}{2}$ or $4\frac{3}{4} \times 6\frac{1}{2}$ plates, each.....	1.00
Extra Adjustable Kit for 8×10 Plate Tank.....	1.25
Plate Cage and Loading Fixture for 4×5 and $3\frac{1}{4} \times 5\frac{1}{2}$ plates (can be used in a 4×5 Premo Film Pack Tank)	1.50
Eastman Plate Tank Powders, for 4×5 Tank, per package, $\frac{1}{2}$ dozen.....	.25
Ditto, for 5×7 Tank, per package, $\frac{1}{2}$ dozen.....	.50
Ditto, for 8×10 Tank, per package, $\frac{1}{2}$ dozen.....	1.20
Kodak Acid Fixing Powder, per 1-pound package.....	.35
Ditto, per $\frac{1}{2}$ -pound package.....	.20
Ditto, per $\frac{1}{4}$ -pound package.....	.15



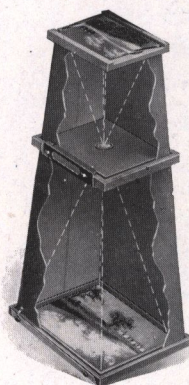
The Kodak Enlarging Outfit

A THOROUGHLY practical equipment for the amateur who wishes to make his own enlargements. The Negative Carrier will accommodate film or plate negatives of any size within 4 x 6 inches, and enlargements within the size of the easel (14 x 17), may easily be made.

The Outfit includes Enlarging Camera, Lens and Diaphragm (largest stop U. S. 4), Lamp House, Cord, Plug and Socket, but does not include the 60 Watt Mazda Electric Light Bulb.

Kodak Enlarging Outfit..... \$25.22
Lantern Slide Block..... .75

Brownie Enlarging Camera



THE improved Brownie Enlarging Camera consists of a light-tight cone with attachments to hold a negative at the small end, and a sheet of Bromide or Velox paper at the other. The cameras, with the exception of the No. 2 Brownie Post-card, are collapsible, so that they fold flat and may be conveniently carried in a suitcase.

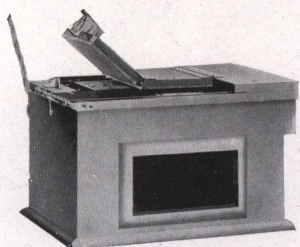
No. 2 Brownie Post Card Enlarging Camera for post card ($3\frac{1}{4} \times 5\frac{1}{2}$) enlargements from $2\frac{1}{4} \times 3\frac{1}{4}$ negatives.....	\$3.71
No. 2 Brownie Enlarging Camera, for 5×7 enlargements from $2\frac{1}{4} \times 3\frac{1}{4}$ negatives.....	4.86
No. 3 Ditto, for $6\frac{1}{2} \times 8\frac{1}{2}$ enlargements from $3\frac{1}{4} \times 4\frac{1}{4}$ negatives.....	6.38
No. 4 Ditto, for 8×10 enlargements from 4×5 negatives or $6\frac{1}{8} \times 9\frac{1}{4}$ enlargements from $3\frac{1}{4} \times 5\frac{1}{2}$ negatives.....	6.91

The Prices of Cameras Include the Excise War Tax

Kodak Amateur Printer

A CONVENIENT and practical printer for making prints upon developing out paper. Prints may be made with white margins in any size from $1\frac{5}{8} \times 2\frac{1}{2}$ to $4 \times 5\frac{1}{2}$ inches, by means of the adjustable masking device, which also holds the negative firmly until released.

A small red electric lamp within the box enables the operator to properly place the negative and paper. When ready for exposure, the hinged pressure board is closed and locked, and a 60 Watt Mazda Lamp for which provision is made, is automatically lighted. The window on the side provides a safe dark-room light for developing out and bromide papers.



It is supplied complete, with-
out Illuminating lamp, but including $5\frac{1}{2}$ feet of electric light cord and socket.

The Kodak Amateur Printer..... \$10.00

Velox Transparent Water Color Stamps

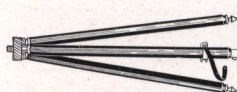
ANYONE can make beautifully colored prints by the use of Velox Transparent Water Color Stamps.

Artistic skill or knowledge of painting is not necessary. Just a brush or two and the book of stamps, which includes simple directions for coloring both prints and lantern slides.

Each book includes twelve sheets of colors and each sheet is divided by perforations into twenty-two stamps. To use any color merely tear off a stamp, place in a small saucer or palette supplied with the outfit, and cover with about a teaspoonful of water.

Velox Transparent Water Color Stamps, complete booklet, 12 colors	\$.45
Separate Color Leaves, two sheets.....	.08
Set of 3 Special Brushes, per set.....	.50
Mixing Palette.....	.25
Velox Transparent Water Color Stamp Outfit, including book, three brushes and palette.....	1.00

Tripods



Kodak Metal Tripod

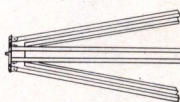
Combining light weight and compactness with exceptional rigidity, this is an ideal tripod for cameras up to 5 x 7.

Has telescoping legs of brass tubing—lower sections nickered, the upper black enameled—should a part become inoperative through wear or accident, any section may be removed for repairs. This is a unique feature among metal tripods.

When extended each section catches and holds firmly. To close, it is necessary to press in top catch only, the others then releasing automatically.

The Nos. 1 and 2 have revolving heads for attaching to camera. With this construction the camera may be swung, so as to take in the desired view without moving the tripod, a distinct advantage over other types of metal tripods. The Nos. 1 and 2 also have straps for holding the legs in place when closed. The No. 6 has folding head and folds into such a compact flat package that it can easily and conveniently be carried in the pocket.

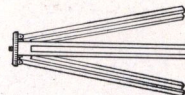
	Sections	Closed	Length Extended	Weight	Price
Kodak Metal Tripod No. 0	3	15½ in.	39½ in.	15 ozs.	\$3.50
Kodak Metal Tripod No. 1	4	15 in.	48½ in.	24½ ozs.	5.25
Kodak Metal Tripod No. 1C	4	15¼ in.	48¾ in.	25½ ozs.	4.75
Kodak Metal Tripod No. 2	5	13½ in.	49½ in.	25 ozs.	6.00
Kodak Metal Tripod No. 2C	5	13¾ in.	49¾ in.	26 ozs.	5.50
Kodak Metal Tripod No. 6	6	11¾ in.	40 in.	24 ozs.	7.50
Leatherette Case for No. 0 or No. 1.....					1.35
Leather Carrying Case for No. 0, 1, or 2.....					3.75
Leather Carrying Case for No. 6.....					4.50
Rubber tips for use indoors, for any size, per set of three.....					.10



Flexo Tripod

For cameras up to and including the 5 x 7 size this is a very satisfactory tripod at low price. Only clear, straight grained spruce is used in its construction.

Price, \$1.25

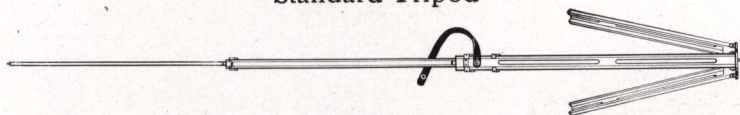


Bull's Eye Tripod

Two sections. Aluminum revolving head. Made of maple with brass fittings. For 4 x 5 cameras, or smaller. Length, extended, 42½ inches; folded, 24 inches. The only two-section tripod that will go into a suitcase.

Price, \$2.00

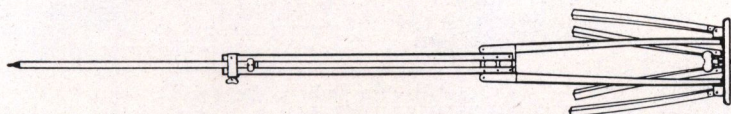
Standard Tripod



The feature of this tripod is the automatic locking of the sections when they are extended. Light, compact and rigid. Fixed, non-detachable head. Length, folded, 21 inches; extended, 53½ inches. Weight, 18 ounces. Cherry finish, brass trimmings.

Price, \$3.00

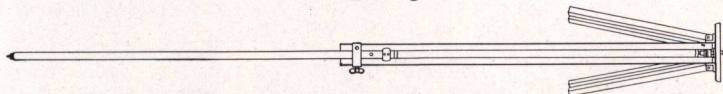
Combination Tripod



This tripod is constructed on the sliding and folding principle. Made of ash and well finished.

Style	Size of Camera	Weight	Price
No. 2½	6½ x 8½ and smaller	3 lbs.	\$5.00
No. 3	8 x 10 and 10 x 12	4 lbs.	5.50
No. 4	11 x 14 and 14 x 17	5 lbs.	6.50
No. 5	17 x 20 and 20 x 24	8 lbs.	9.00

Sliding Tripod



A rigid tripod for use with larger and heavier cameras. The No. 1 and No. 2 are made of spruce, the No. 3 and No. 4 of ash.

Style	Size of Camera	Weight	Price
No. 1	5 x 7 and smaller	2 lbs.	\$2.50
No. 2	5 x 8 and 6½ x 8½	2 lbs. 8 ozs.	3.00
No. 3	8 x 10 and 10 x 12	4 lbs. 8 ozs.	3.50
No. 4	11 x 14 and 14 x 17	6 lbs. 8 ozs.	5.00

Eastman Tripod Brace

A simple device that firmly holds in position each leg of the tripod after it has been set up and adjusted.

Eastman Tripod Brace..... \$1.50

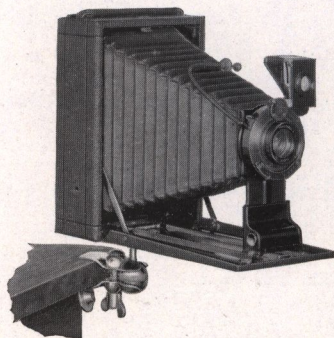
R. O. C. Tripod Truck

A folding tripod support, with casters for indoor use. Holds the tripod securely and provides a practical portable camera stand.

R. O. C. Tripod Truck, No. 1 for average tripods..... \$1.50
R. O. C. Tripod Truck, No. 2 for very heavy tripods..... 1.75

Premo Accessories

The Optipod

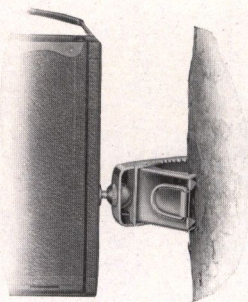


It is frequently necessary to provide a firm support for a camera when a tripod is not conveniently at hand. The felt covered jaws of the Optipod may be quickly and firmly attached to a chair, table, fence, cycle or motor car, with a few turns of the thumb screw, at the same time rigidly clamping the ball and socket camera support in the required position. If slight readjustment of the camera is necessary, the thumb screw is turned just enough to permit movement of the ball in the socket.

The Optipod can also be attached to the head of a tripod, permitting adjustment of the camera that would be difficult, if not impossible, without this device.

The Optipod is quite small and may readily be carried in the pocket. It is finished in nickel.

The Optipod..... \$1.00



The Kodapod

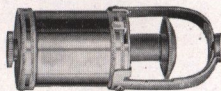
This little device serves the purpose of a tripod, and may readily be carried in the pocket. Its jaws are actuated by a strong spring, and when attached to a tree, fence or similar object, it provides a firm support for the average size pocket camera. The adjustable head permits using the camera in the most desirable position.

The Kodapod..... \$1.50

Kodak Self Timer

The Kodak Self Timer may be adjusted to automatically release the shutter at the required time, permitting the operator of the camera to be included in the picture.

The Timer is made in one size, and will only operate shutters fitted with Cable Release.



Kodak Self Timer..... \$1.25

Premo Accessories

Kodak Candle Lamp

This lamp is collapsible, well made, of special tested ruby fabric, bound in metal frames.

Kodak Candle Lamp..... \$.35
Extra Candles for same, per doz.. .40



Kodak Dark Room Lamp

The Kodak Dark Room Lamp is oil burning and is fitted with both orange and ruby glass.

No. 2 Kodak Dark Room Lamp.... \$1.00

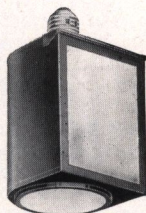


Brownie Safelight Lamp

An inexpensive but reliable safelight lamp for the amateur. The complete lamp screws into any electric socket. It takes a 15-watt Mazda bulb and has removable circular safelight in the bottom and rectangular one on the side.

A very convenient, clean lamp for the average amateur and easily carried in the bag of the traveler or vacationist for use as required.

Brownie Safelight Lamp..... \$1.50
Extra Safelights No. 1 Circular, \$.20; Side..... .30



Kodak Safelight Lamp

Those who have electricity in the house will find this lamp much superior to other types for dark room work. It is supplied with a 5x7 Series I Safelight for use with films or plates not highly colored sensitive. For more advanced work Safelights or other Series may be readily substituted.

Price includes safelight and four feet of electric cord with socket.

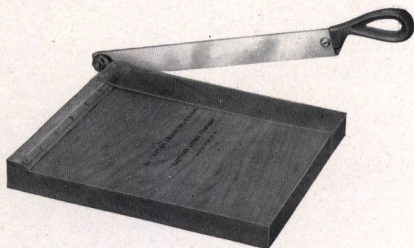
Kodak Safelight Lamp..... \$3.50



Kodak Trimming Board

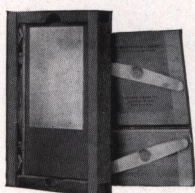
A thoroughly reliable trimming board at a moderate price, constructed of hard wood with natural finish. The blade is of the best steel and a rule is fitted to the board.

No. 1, 5x5 inches..... \$.65
No. 2, 7x7 inches..... .85
Transparent Trimming
Gauge for No. 1 (extra) .35
Do., No. 2..... .35



Premo Accessories

Maskit Printing Frame

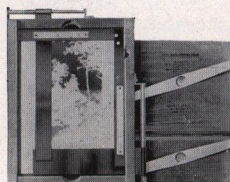


Furnished with a series of paper masks and a patented simple-working device on the inside of the frame holds mask, paper and negative firmly together, assuring uniform white margins and preventing all chance of slipping.

Kodak Maskit Printing Frame,	$3\frac{1}{4} \times 4\frac{1}{4}$..	\$.55
"	"	"
"	"	"
"	$3\frac{1}{4} \times 5\frac{1}{2}$..	.60
"	5×7 ..	.70

Kodak Auto-Mask Printing Frame

An adaptation to a printing frame of the masking principle of the highly successful Kodak Amateur Printer. Will accommodate negatives of any size up to and including 4×5 and $3\frac{1}{4} \times 5\frac{1}{2}$. It is a very simple matter to adjust the mask for uniform masking of any negative you care to use, a graduated scale attached to the stationary guide aiding in sizing and holding exact dimensions of the mask openings.



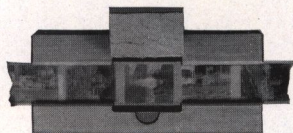
Kodak Auto-Mask Printing Frame.. \$1.50

Eastman Printing Frame

Standard Printing Frames, strongly constructed of suitable material.

Eastman,	$2\frac{1}{4} \times 3\frac{1}{4}$ plates or $1\frac{1}{2} \times 2\frac{1}{2}$ or smaller films.....	\$.30
"	$2\frac{1}{2} \times 4\frac{1}{4}$, $3\frac{1}{4} \times 4\frac{1}{4}$ or 4×535
"	$3\frac{1}{4} \times 5\frac{1}{2}$, for films.....	.35
"	$3\frac{1}{4} \times 5\frac{1}{2}$, for plates.....	.40
"	5×745

Kodak Serial Printing Frame



These frames are designed for printing No. 00 Cartridge Films in the continuous strip, making it unnecessary to cut up these small size rolls, as the film slides through the frame from exposure to exposure. No. 1 is provided with tension spring and is especially suitable

for printing on Solio paper or from dense negatives, on Velox, where long exposures are required. No. 1A is for use with developing-out paper only, where average exposures are required, contact being maintained by pressure of the fingers as the frame is held up to the light. With no other type of frame can printing be handled so rapidly. The illustration shows No. 1A.

Kodak Serial Printing Frame, No. 1, \$.35; No. 1A, \$.40

Premo Accessories

Kodaloid Printing Masks

Transparent orange color masks for use with Maskit Printing Frames in sets of three each with different openings.

For $3\frac{1}{4} \times 4\frac{1}{4}$ frame, per set of three.....	\$.25
For $3\frac{3}{4} \times 5\frac{1}{2}$ frame, per set of three.....	.30
For 5×7 frame, per set of three.....	.35

Black Paper Masks, same size as above

Price, per set of three, any size.....	\$.10
----------------------------------------	--------

Flexo Print Roller



An inexpensive but very satisfactory roller for amateur use; has black enameled frame and a 4-inch rubber roller.

Price, \$.30

Kodak Print Roller

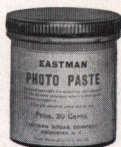
The best roller ever made for general amateur use; has double rubber rollers, 2×6 inches, and nickeled frame.

Price, \$1.00



Eastman Photo Paste

A solid, first quality white paste. Will not cockle nor discolor print or mount.

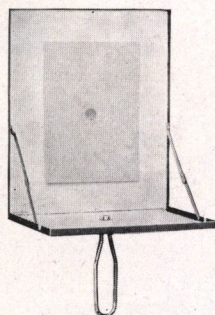


Jars		Tubes	
4 ounce.....	\$.15	2 ounce.....	\$.10
8 ounce.....	.25	3 ounce.....	.15
		5 ounce.....	.25

Flash-light Material

The simplest method of making flashlight pictures is by means of the Eastman Flash Sheets and Kodak Flash Sheet Holder. The sheets burn slowly, giving a broad, soft light, and not so startling the subject as to give a staring effect to the eyes.

The holder is a genuine innovation. A saw tooth holds the sheet in proper position and it is lighted from the back through an aperture provided in the center for the purpose. In this manner the holder is always between the operator and the flash sheet, and it may be held in the hand or supported on a tripod, a socket being provided for the latter purpose.



No. 1 Flash Sheets, per package of $\frac{1}{2}$ dozen sheets, 3×4	\$.35
No. 2 Flash Sheets, per package of $\frac{1}{2}$ dozen sheets, 4×556
No. 3 Flash Sheets, per package of $\frac{1}{2}$ dozen sheets, 5×784
Kodak Flash Sheet Holder.....	1.25

Premo Accessories

Developing Trays

Bulls-Eye, $3\frac{1}{4} \times 4\frac{1}{4}$	\$.15	Bulls-Eye, 5 x 8	\$.40
Bulls-Eye, 4 x 517	Bulls-Eye, $6\frac{1}{2} \times 8\frac{1}{2}$60
Bulls-Eye, $3\frac{1}{4} \times 5\frac{1}{2}$18	Bulls-Eye, 8 x 1080

Eastman Visible Graduate

This new graduate, as its name implies, may be easily read in the dark-room under the rays of the ruby light.

The graduations are opaque and not translucent as is the case with most graduates.

2 ounce.....	\$.25	8 ounce.....	\$.50
4 ounce.....	.35	16 ounce.....	.75



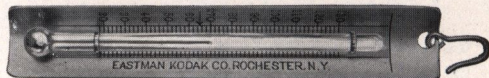
Thermometer Stirring Rod



Two articles of great use to the amateur, combined in one. The rod is $\frac{1}{4}$ -inch in diameter and 9 inches long. One end is flattened for crushing purposes. The thermometer is carefully tested and is unusually accurate.

Price, \$1.00

Eastman Thermometer



Especially suitable for determining the temperature in tank development. Made with curved back to fit inside of tank.

Price, \$1.00

Developing and Printing Outfits

Eastman 3A Outfit includes every requisite for developing by the dark-room method, printing and finishing twenty-four $3\frac{1}{4} \times 5\frac{1}{2}$ or smaller pictures.

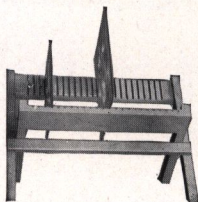
1 Kodak Candle Lamp, 35c; 1 Printing Frame, 35c; 1 Glass for Frame, 5c; 1 4-ounce Graduate, 20c; 1 Stirring Rod, 5c; 4 Developing Trays, 40c; 5 Tubes Eastman's Special Developer, 25c; $\frac{1}{2}$ pound Kodak Acid Fixing Powder, 15c; 1 package Bromide Potassium, 10c; 2 dozen $3\frac{1}{4} \times 5\frac{1}{2}$ Velox Paper, 40c; 2 ounces Nepera Solution, for developing Velox, 10c; Instruction Book. These articles if purchased separately would cost \$2.40. Price complete, neatly packed, \$1.65.

A B C Outfit, similar to above, but for 4 x 5 negatives, \$1.65.

Premo Negative Rack

This rack accommodates negatives of all sizes. It folds flat when not in use.

No. 1, for 12 negatives.....	\$.85
No. 2, for 24 negatives.....	.45



Kodak Dry Mounting Tissue

Mounts prints even on thin mounts without curl. The simplest method of mounting, no apparatus being required—just fix the tissue on print, lay on mount and press with a warm flat iron; no sticky fingers, no muss of any kind.

Prices

Size, $3\frac{1}{2} \times 3\frac{1}{2}$, 3 dozen.....	\$.10	Size, 4 x 5, 2 dozen.....	\$.10
Size, $3\frac{1}{4} \times 4\frac{1}{4}$, 3 dozen.....	.10	Size, $4\frac{1}{4} \times 6\frac{1}{2}$, 1 dozen.....	.10
Size, $3\frac{3}{4} \times 5\frac{1}{2}$, 2 dozen.....	.10	Size, 5 x 7, 1 dozen.....	.10

Plate Holder and Adapter Slides

Lacquered Pressboard

$3\frac{3}{4} \times 4\frac{1}{4}$	\$.25	5 x 7.....	\$.30	8 x 10.....	\$.50
$3\frac{3}{4} \times 5\frac{1}{2}$25	$6\frac{1}{2} \times 8\frac{1}{2}$40	11 x 14.....	.75
4 x 5.....	.25				

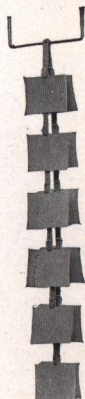
Hard Rubber

5 x 7.....	\$.45	$6\frac{1}{2} \times 8\frac{1}{2}$	\$.60	8 x 10.....	\$.75
------------	--------	------------------------------------------	--------	-------------	--------

Plate Holder Kits

Made of well seasoned wood that will not warp, neatly finished in dead black, and of correct size to nest perfectly.

Size Outside	Size of Opening for Plate	
4 x 5	$3\frac{1}{4} \times 4$, $3\frac{1}{4} \times 4\frac{1}{4}$	\$.25
5 x 7	$3\frac{1}{4} \times 4$, $3\frac{1}{4} \times 4\frac{1}{4}$, $3\frac{1}{4} \times 5\frac{1}{2}$, 4 x 5, $4\frac{1}{4} \times 6\frac{1}{2}$30
5 x 8	$3\frac{1}{4} \times 4\frac{1}{4}$ and 4 x 5.....	.30
$6\frac{1}{2} \times 8\frac{1}{2}$	$3\frac{1}{4} \times 4\frac{1}{4}$, 4 x 5, $3\frac{1}{4} \times 5\frac{1}{2}$, $4\frac{1}{4} \times 6\frac{1}{2}$, $4\frac{3}{4} \times 6\frac{1}{2}$, 5 x 7.....	.35
7 x 11	5 x 7.....	.45
8 x 10	$4\frac{1}{4} \times 6\frac{1}{2}$, $4\frac{3}{4} \times 6\frac{1}{2}$, 5 x 7, $6\frac{1}{2} \times 8\frac{1}{2}$45



Premo Film Pack Developing Hanger

Improved Model

For use with the vertical tank system of development employed by photo finishing departments.

The improved hanger has twelve film clips of new design that provide greater rapidity and security in attaching the films. The construction also provides against the clips becoming inoperative through the chemical action of the developing solutions.

The order number may be written in pencil upon a white Kodaloid tablet removably attached to the hanger top.

The films are developed, rinsed, fixed, washed and dried without removal from the hanger.

Prices

Film Pack Developing Hanger.....	\$1.50
Extra Clips, per dozen.....	.90

Albums



The Kodak Album

(Loose-leaf)

One-piece black narrow grained cowhide—leather lined. Leaves held in place by black

silk cord through cover and metal tubes. Very flexible—Oxford Bible style edges.

4¾ x 7, A, 50 black leaves.. \$4.25 7 x 11, B, 50 black leaves.. \$6.50
Package 12 extra leaves, A, \$.15; B, \$.18

Agrippa Album

(Loose-leaf)

Choice of genuine beautiful black grain leather or embossed black cloth cover; 50 black leaves held in place by silk cord and holder inside of cover.

5 x 8, CA, cloth \$1.40; LA, leather..... \$2.75
7 x 11, CB, cloth 1.90; LB, leather..... 4.00
10 x 12, CC, cloth 2.85; LC, leather..... 6.00
9 x 14, CD, cloth 3.10; LD, leather..... 6.25
Package 12 extra leaves, A, \$.15; B, \$.18; C, \$.30; D, \$.35

The Ajax Album

(Loose-leaf)

This album has closed back and 50 black leaves held in place by cord and holder inside of covers. Choice of black narrow grained or rich maroon imitation leather covers.

5 x 8, MA, maroon, or BA, black..... \$1.50
7 x 11, MB, maroon, or BB, black..... 2.10
10 x 12, MC, maroon, or BC, black..... 3.25
9 x 14, MD, maroon, or BD, black..... 3.35
Package 12 extra leaves, A, \$.15; B, \$.18; C, \$.30; D, \$.35

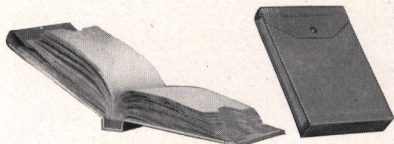
The Thebes Album

Loose-leaf open back style; 50 black leaves held in place by silk cord drawn through metal tubes. The word "Photographs" stamped in gold on leather cover, plain relief on cloth cover. Choice of black seal grain leather or artificial black leather covers.

5½ x 7, CA, cloth \$1.40; LA, leather..... \$2.65
7 x 10, CB, cloth 1.90; LB, leather..... 4.00
10 x 7, CC, cloth 1.90; LC, leather..... 4.00
8 x 10, CD, cloth 2.10; LD, leather..... 4.50
11 x 14, CE, cloth 3.40; LE, leather..... 7.00
Package 12 extra leaves, A, \$.15; B, \$.18; C, \$.18; D, \$.20; E, \$.40

Eastman Film Negative Albums

For 100 negatives, 2½ x 4¼ or smaller..... \$.75
For 100 negatives, 4 x 5 or smaller..... 1.00
For 100 negatives, 3¼ x 5½ or smaller..... 1.00
For 100 negatives, 5 x 7 or smaller..... 1.50



Card Mounts

Baltic

Buff, Brown or Grey
Heavy stock, beveled edge, heavy
borders—a beautiful rich mount.

No.	For Prints	Per 1000	Per 100	Per 50
0	1 3/8 x 2 1/2	\$20.50	\$2.10	\$1.05
1	2 1/4 x 3 1/4	25.00	2.60	1.30
1-A	2 1/2 x 4 1/4	27.50	2.80	1.40
2	3 1/2 x 3 1/2	29.50	3.00	1.50
2-C	2 7/8 x 4 7/8	30.50	3.10	1.55
3	3 3/4 x 4 3/4	29.50	3.00	1.50
3-A	3 3/4 x 5 1/2	33.00	3.40	1.70
4	4 x 5	38.50	4.00	2.00
4-A	4 1/4 x 6 1/2	48.00	5.00	2.50
5	5 x 7	60.00	6.20	3.10

Triumph

Made in Ash Grey and Artist Brown

No.	For Prints	Price Per 100	Price Per 50
A1	5 x 7	\$ 6.20	\$3.10
A2	5 x 7	6.20	3.10
B1	6 1/2 x 8 1/2	8.50	4.25
B2	6 1/2 x 8 1/2	8.50	4.25
C1	8 x 10	10.50	5.25
C2	8 x 10	10.50	5.25
D1	7 x 11	11.00	5.50
D2	7 x 11	11.00	5.50

Riviera

Ash Grey and White

For Prints	Per 1000	Per 100	Per 50
1 1/2 x 2	\$12.00	\$1.25	\$.65
1 5/8 x 2 1/2	13.00	1.35	.70
2 1/4 x 2 1/4	14.50	1.50	.75
2 1/4 x 3 1/4	15.50	1.60	.80
2 1/2 x 4 1/4	18.00	1.85	.95
3 1/2 x 3 1/2	18.00	1.85	.95
3 1/2 x 4 1/4	18.00	1.85	.95
2 7/8 x 4 7/8	21.00	2.15	1.10
4 x 5	23.00	2.35	1.20
3 3/4 x 5 1/2	23.00	2.35	1.20
4 1/4 x 6 1/2	30.00	3.10	1.60
5 x 7	33.00	3.40	1.75

Enlargement Folder

Made with White Insert Olive Grey
Cover. Sepia Buff Insert—
Brown Cover

No.	For Prints	Per Pkg. of 1/2 Doz. Folders
A-1	5 x 7	\$.81
A-2	5 x 7	.81
B-1	6 1/2 x 8 1/2	.93
B-2	6 1/2 x 8 1/2	.93
C-1	6 x 10	1.05
C-2	6 x 10	1.05
D-1	8 x 10	1.11
D-2	8 x 10	1.11

Inslip Enlargement Mount

Color, English Grey or Sepia-Buff

No.	For Prints	Price Per Doz.	No.	For Prints	Price Per Doz.
A	3 1/4 x 5 1/2	\$.90	E	5 x 8 1/2	\$1.02
B	3 3/8 x 5 1/2	.90	F	6 1/2 x 8 1/2	1.14
C	4 1/4 x 6 1/2	.90	G	6 x 10	1.26
D	5 x 7	.90	H	8 x 10	1.50

No.	For Prints	Price Per 1/2 Doz.	No.	For Prints	Price Per 1/2 Doz.
J	10 x 12	\$1.50	L	8 x 14	\$1.02
K	7 x 12	1.02	M	11 x 14	1.86

Sundries

Cable Release.....	\$.35
Bulbs and Tubes, No. 2.....	.25
Bulbs and Tubes, No. 3.....	.35
Film Clips, Kodak Jr. No. 1.....	.12
Film Clips, Kodak Jr. No. 2.....	.25
Film Clips, Eastman, 3 1/2-inch. per pair.....	.30
Focus Cloth, Rubber.....	1.20
Ground Glass—4 x 5.....	.25
5 x 7.....	.30
6 1/2 x 8 1/2.....	.45
8 x 10.....	.55

Reducing Backs:

For View Cameras, 5 x 7...	\$10.00
Ditto, 6 1/2 x 8 1/2.....	11.00
Ditto, 8 x 10.....	12.00
Ditto, 7 x 11.....	15.00
Premo View Finder.....	1.50
Milled Head Screws for Cam- eras:	
1/2 inch and smaller.....	15
Larger than 1/2 inch.....	.20
Stirring Rod, Hard Rubber.....	.30
Tubing, Red or Black, per foot	.08

Tested Chemicals

Eastman Chemical Outfit, consists of M. Q. and Special Developer, Intensifier, Reducer and Velox Re-developer.....	\$.40
Eastman Special Developer Powders, per package, 5 in sealed glass tubes...	.30
" Hydrochinon Developer Powders, per dozen.....	.60
" Hydrochinon Developer Powders, per ½ dozen.....	.30
" Hydrochinon Developer Powders, per package 5 glass tubes.....	.30
" Pyro Developer Powders, per dozen.....	.50
" Pyro Developer Powders, per ½ dozen.....	.25
" Pyro Developer Powders, per package 5 glass tubes.....	.25
Elon, per 1-ounce bottle.....	.92
Tozol, per 1-ounce bottle.....	.65
Hydrochinon, per 1-ounce can.....	.30
Eastman Permanent Crystal Pyro, per 1-ounce bottle.....	.35
Velox, Re-developer Tubes, package of 12 tubes.....	.84
Hypo Sulphite of Soda, granular, per pound.....	.18
Alum, powdered, per pound.....	.25
Kodak Acid Fixing Powder, per pound package.....	.35
" Acid Fixing Powder, per ½-pound package.....	.20
" Acid Fixing Powder, per ¼-pound package.....	.15
Eastman Intensifier, glass tube, per tube.....	.15
" Reducer, per box of 5 tubes.....	.50
" Opaque No. 1, per tube.....	.15
Potassium Bromide, per ounce can.....	.15
Acetic Acid, 28 per cent., per 1-pound bottle.....	.34
Citric Acid, 4-ounce bottle.....	.61
Eastman Tested Carbonate of Soda (desiccated), per 1-pound bottle.....	.40
" Tested Sulphite of Soda (desiccated), per 1-pound bottle.....	.45

These prices subject to change without notice.

B. & L. Extreme Wide-Angle Lens

Series V. F.18

Designed for extreme wide-angle work, this lens embraces a field of 110 degrees.

No.	Size	Equivalent Focus	Price in Barrel	No.	Size	Equivalent Focus	Price in Barrel
1	4¼ x 6½	3¾ in.	\$28.00	3	6½ x 8½	5¾ in.	\$34.00
2	5 x 7	4¾ in.	28.00	4	8 x 10	7¾ in.	42.00

Symmetrical Wide-Angle Lens

Has an angle of about 80 degrees and is furnished in cells to interchange with the various lenses supplied on Premo Cameras.

No.	Size	Equivalent Focus	Price in Cells Only	No.	Size	Equivalent Focus	Price in Cells Only
1	4 x 5	3½ in.	\$ 7.50	3	6½ x 8½	6½ in.	\$18.00
2	5 x 7	5 in.	11.00	4	8 x 10	8 in.	22.50

Terms

The prices in this catalog are strictly net, except to regular dealers who carry our goods in stock. *These prices owing to unsettled conditions are however subject to change without notice.* For the convenience of our customers we recommend that they make their purchases from a dealer in photographic goods, as by so doing they can save both time and transportation charges.

Eastman Kodak Company

Rochester Optical Department

Rochester, N. Y.

