



PREMO

✓

# PREMO CAMERAS

1912

MANUFACTURED BY  
ROCHESTER OPTICAL DIVISION  
*EASTMAN KODAK COMPANY*  
ROCHESTER, N.Y.



## FOR TOURISTS

Premo Cameras and Premo Film Packs may be obtained of practically every photographic dealer in this country. They may be had also in any part of the world in most photographic establishments, and always at the following agencies :

- LONDON—Kodak, Limited, Kingsway, W. C.; 60 Cheapside, E. C.;  
115 Oxford Street, W.; 171-173 Regent Street, W.; 59 Brompton  
Road, S. W.; 40 Strand, W. C.; 1 and 2 Gracechurch St., E. C.
- LIVERPOOL—Kodak, Limited, 96 Bold Street.
- BIRMINGHAM—Kodak, Limited, 5 Corporation Street.
- NEWCASTLE—Kodak, Limited, 2 St. Nicholas Building.
- DUBLIN—Kodak, Limited, 89 Grafton Street.
- GLASGOW—Kodak, Limited, 72-74 Buchanan Street.
- PARIS—Kodak, Société Anonyme Française, Avenue de l'Opera, 5;  
Place Vendôme, 4.
- LYONS—Kodak, Société Anonyme Française, 26-28 Rue de la Re-  
publique.
- LAUSANNE—Kodak, Société Anonyme, 13 Avenue du Tribunal  
Federal.
- NICE—Kodak, Société Anonyme Française, 34 Avenue de la Gare.
- BERLIN—Kodak Gesellschaft m. b. H, Leipzigerstrasse, 114; Unter  
den Linden, 26.
- BRUSSELS—Kodak, Limited, 36 Rue de l'Ecuyer.
- COPENHAGEN—Kodak Aktieselskab, Ostergade 1.
- VIENNA—Kodak Gesellschaft, m. b. H., 1 Karnknnerstrasse 16.
- ST. PETERSBURG—Kodak, Limited, Bolschaia Konnuschenaia 19.
- MOSCOW—Kodak, Limited, 15, 16 Petrovka.
- MILAN—Kodak Societa Anonima, 34 Corso Vittorio Emanuele.
- ROME—Kodak Societa Anonima, Corso Umberto I., 399.
- NAPLES—Kodak Societa Anonima, 288 Via Roma.
- CAIRO—Kodak (Egypt) S. A. Opera Square.
- MELBOURNE—Kodak (Australasia) Ltd., 284 Collins Street.
- SYDNEY—Kodak (Australasia) Ltd., 379 George Street.
- BRISBANE—Kodak (Australasia) Ltd., 78 Queen Street.
- ADELAIDE—Kodak (Australasia) Ltd., 37 Rundel Street.
- WELLINGTON—Kodak (Australasia) Ltd., 6 Mercer Street.

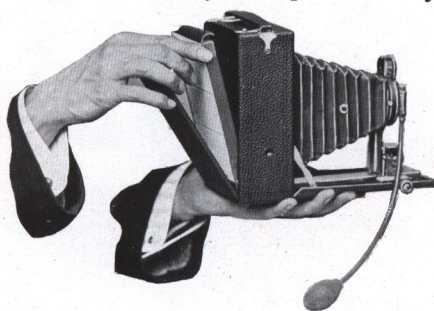
## *You Need No Experience— If You Use a Premo*

**Y**OU can make good pictures from the start without any previous knowledge of photography whatever.

The instructions which come with each Premo camera are worded in the simplest language, giving complete directions for all forms of amateur photography. The cameras themselves are so simple in construction that in many the few operations necessary to use them are practically self-evident.

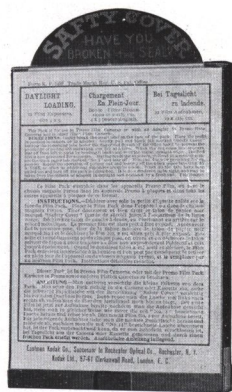
In our advertising, we often refer to Premos as being the smallest and lightest, the easiest to load and operate of all cameras. This is true, because the Premo Film Pack, with which most of our cameras are loaded, requires very little space when in use and itself is constructed upon such a simple, convenient principle.

Packed flat, the Premo Film Pack can be loaded in Premo Film cameras by two operations. Just open back of camera and drop in pack—then close back and it's done. This is the easiest and quickest method of loading any camera.



Easy to Load

successive exposures, merely pull out successive tabs. Upon pulling out the twelfth tab the pack is rendered light-tight, so that it may be safely removed in any light and a fresh



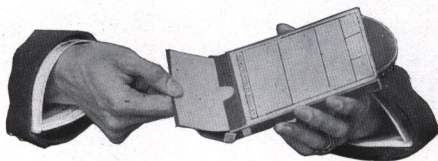
The Premo Film Pack

To prepare for the first exposure, simply pull out from the pack the paper tab marked "Safety Cover." Then to change each film for



one substituted. The entire operation of changing the twelve films can be done in as many seconds.

With these advantages of easy loading and operating, the



Premo Film Pack has another most important one—the removal of one or more films for development at any time.

Remove one or more films for development at any time

This feature is found in no other film system, and obviates the necessity of exposing all the films before any can be developed. It is plain that with this advantage, there is no reason for furnishing film packs in less than twelve exposure packages, for the operation of removing the films is very easy and may be repeated as often as desired.

***Tank Development***—As we have said, anyone who follows directions in our instruction books can make good exposures, and if the exposures are right, development, heretofore a bugbear to many amateurs, is certain with the Premo Film Pack Tank.

All one has to do is to dissolve the developing powders in the tank, bring the solution to the proper temperature and put in the films. At the expiration of a specified time, they are developed as well as they could be by an expert hand developer. And the best of it is that anyone who will follow the perfectly simple directions can get good results the first time.

***Focusing Camera***—Aside from purely film cameras, the Premo line comprises instruments which will meet any requirement in a ground glass focusing or plate camera. As the ground glass is just the size of the negative and occupies exactly the same position when in use, the operator can actually see, before making the exposure, what the finished picture will contain.

He can move his lens back or forward until the picture appears absolutely sharp, he can determine just what location the various objects in the picture should take, for the

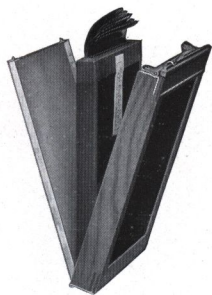
best balanced picture, and he can see the exact size which every object will have in the finished result.

### **Premo Film Pack Adapter —**

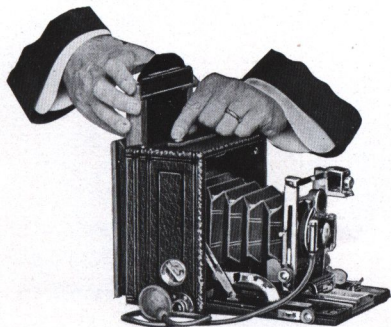
These cameras were primarily intended for plates, but with the introduction of the Premo Film Pack it was found that a simple film pack holder or adapter, modeled upon the ordinary plate holder, would make it a simple matter to load any of them with film packs.

The Premo Film Pack Adapter has the general size and appearance of a plate holder. But it has a hinged back which can be easily opened, the film pack dropped in place, back closed, and the adapter then loaded in the plate camera just as an ordinary plate holder is.

To make exposures, the slide is withdrawn, the "safety cover" pulled out and the film pack operated for successive exposures just as in film cameras.



Premo Film Pack Adapter



The Adapter is loaded just like a Plate Holder

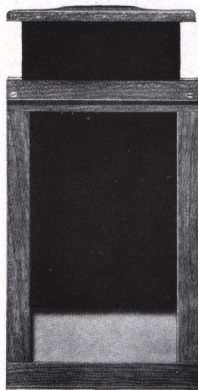
Then at any time the slide may be reinserted, the adapter removed and the subject sharply focused on the ground glass by precisely the same method you would follow in using glass plates.

Thus a Premo plate camera will take films or plates with equal facility; it offers the daylight loading and other features of the Premo Film Pack, as well as every advantage of the ordinary focusing camera; and many of these Premos are as compact as purely film cameras.

**Multiple Pictures with Premo Film Pack** — When the film pack is loaded into one of these cameras in an



adapter, it is easy to make two or more pictures on one film, if desired. For instance, to make two pictures on one film, first pull out the adapter slide half way and make the exposure. Then pull out film pack tab half way. This draws the exposed half of the film around to the back and presents the remaining half for another exposure.



For Multiple Pictures

To make four pictures on a film, pull out slide a quarter of the way and the tabs a quarter of the way, after each exposure, until all are made.

This practice is especially desirable for the 5 x 7 size.

**Results**—Premo cameras have over twenty-five years of experience behind them. They have special features, protected by over fifty patents. They are built under watchful inspection to withstand long and constant usage, and at the same time to present a neat and attractive appearance.

Each Premo is fitted with the best shutter obtainable in its class, and with a lens carefully tested to perform the work for which it is intended.

The film used in the Premo Film Pack is from the same stock as the Eastman N. C.—the best in the world. Hence Premos will produce as good pictures as can be had.

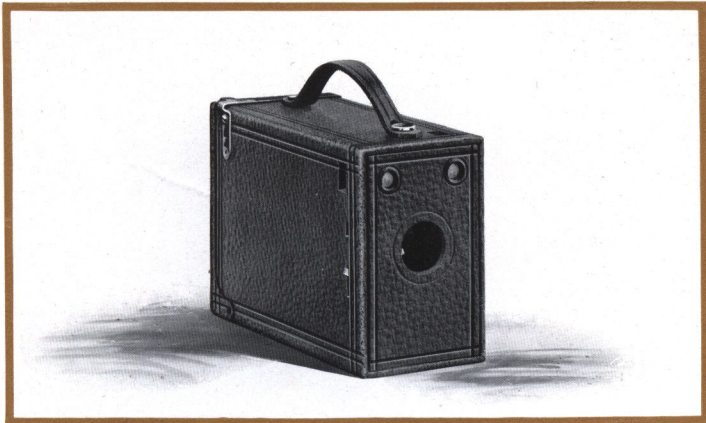
**Go to the Dealer**—Space is lacking to describe in detail every Premo convenience. Go to the dealer and examine the goods themselves. Ask him any special question about which you may be undecided—or write us.

ROCHESTER OPTICAL DIVISION

EASTMAN KODAK CO.

ROCHESTER, N. Y.

# PREMO JUNIOR No. 0



**I**N the Premo Jr. No. 0, we offer the most inexpensive and simplest possible camera for film pack photography. But in designing the model, we have not lost sight for a moment of the fact that in meeting these requirements, the camera must uphold the Premo standard and must make good pictures within its scope. During the year that it has been on the market, it has commanded an excellent trade, and while it is especially suitable for the young people, it has found favor among many grown up amateurs. The steadily increasing demand for film to fit it is perhaps the best evidence of the satisfaction which it is giving, for obviously one continues to buy film only for a camera that gives good results.

The camera has the simplest of automatic shutters working for time and snap shot exposures, and will last indefinitely.

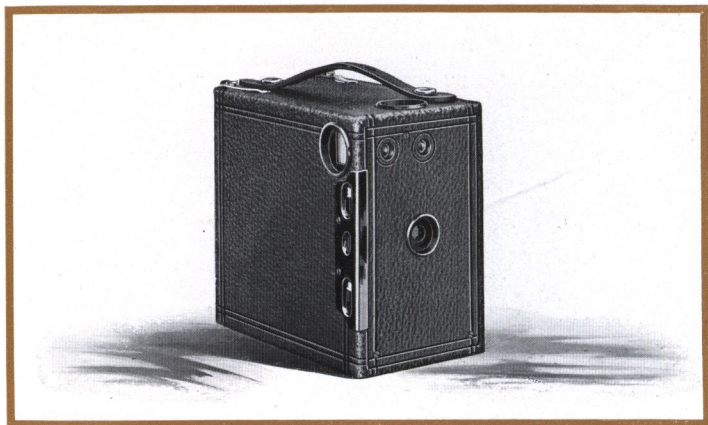
**Specifications:** *Capacity*—12 films,  $1\frac{3}{4} \times 2\frac{3}{8}$ , without reloading.  
*Size of Camera*— $2\frac{1}{4} \times 3\frac{5}{8} \times 5\frac{1}{4}$  inches. *Weight*—7 ounces. *Shutter*—Rotary Automatic with diaphragm stops. *Lens*—Meniscus. *Finder*—Double.

## PRICES

		$1\frac{3}{4} \times 2\frac{3}{8}$
Premo Jr. No. 0	.	\$1.50
Carrying Case	.	.60
Premo Film Pack (12 exposures)	.	.25



# PREMO JRS. Nos. 1, 1A, 3 & 4



**T**HERE is no more enjoyable recreation for the young people than photography, and the Premo Juniors are particularly well adapted for the use of boys and girls by reason of their low cost and simple operation.

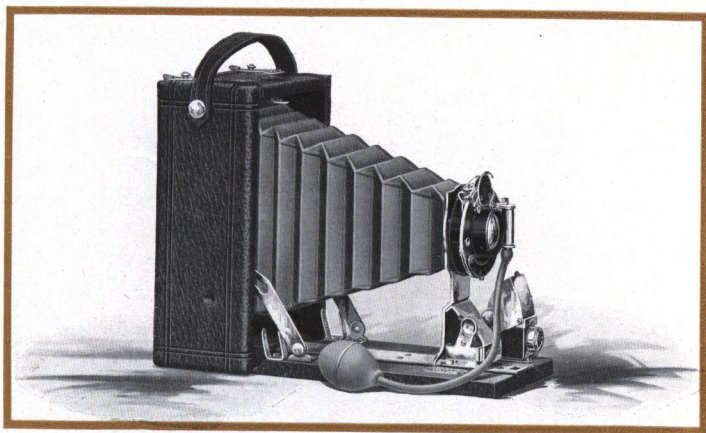
This does not mean that the cameras are not suitable for older people, for there are many grown up amateurs who prefer cameras of this simple type, and are using Premo Juniors with marked success. For all ordinary work, such as portraiture, snap shots in good light and average landscapes, they are capable of producing very good results. These cameras are all fitted with tested lenses, automatic shutters with diaphragm stops, finders and tripod sockets.

**Specifications:** *Capacity*—12 exposures without reloading. *Size of Camera*—No. 1,  $3\frac{1}{8} \times 4\frac{1}{2} \times 5\frac{3}{4}$  in.; No. 1A,  $3\frac{1}{2} \times 5\frac{1}{2} \times 5\frac{7}{8}$  in.; No. 3,  $4 \times 5\frac{1}{2} \times 5\frac{3}{4}$  in.; No. 4,  $4\frac{3}{4} \times 6\frac{1}{4} \times 6\frac{1}{2}$  in. *Weight*—No. 1, 11 ounces; No. 1A, 14 ounces; No. 3, 20 ounces; No. 4, 25 ounces. *Shutters*—Rotary Automatic with diaphragm stops. *Lens*—Single Achromatic. Two tripod sockets and two finders.

## PRICES

	No. 1 $2\frac{1}{4} \times 3\frac{1}{4}$	No. 1A $2\frac{1}{2} \times 4\frac{1}{4}$	No. 3 $3\frac{1}{4} \times 4\frac{1}{4}$	No. 4 $4 \times 5$
Premo Junior . . . . .	\$2.00	\$3.00	\$4.00	\$5.00
Carrying Case . . . . .	.75	.85	1.10	1.25
Premo Film Pack (12 exposures) . . . . .	.40	.50	.70	.90
Premo Portrait Attachment . . . . .	.50	.50	.50	.50

# PREMOETTES Nos. 1 & 1A



**V**ERY convenient in operation, very attractive in appearance and remarkably light and compact, the Premoettes are inexpensive but perfectly reliable cameras that can be carried even in a boy's pocket.

Premoettes are furnished with either single lens and special automatic shutter or double lens and Kodak Ball Bearing shutter. They're as simple to operate as they are small and attractive, and they make excellent pictures.

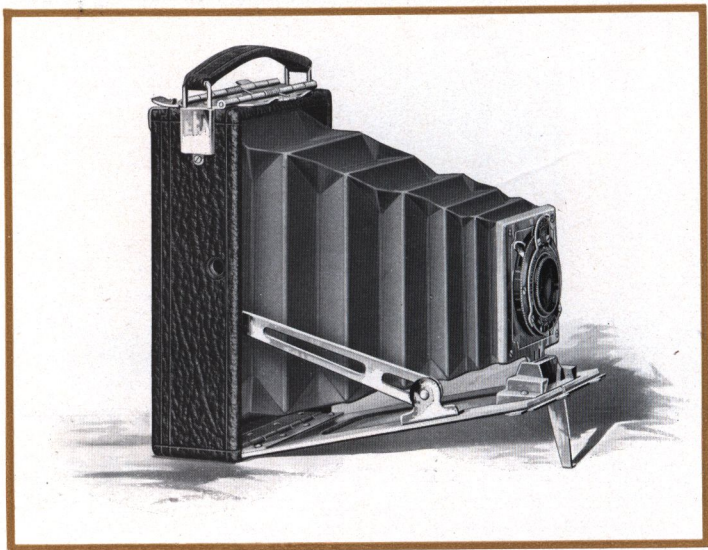
**Specifications:** WITH SINGLE LENS: *Dimensions*—No. 1,  $1\frac{7}{8} \times 3\frac{3}{16} \times 4\frac{1}{2}$  in.; No. 1A,  $2\frac{1}{8} \times 3\frac{5}{8} \times 5\frac{1}{2}$  in. *Weight*—No. 1, 11 ounces; No. 1A, 15 ounces. *Lens*—Meniscus. *Shutter*—Premoette Automatic for time, bulb and instantaneous exposures Two Tripod Sockets and Reversible Finder. WITH DOUBLE LENS: *Dimensions*—No. 1,  $2\frac{1}{8} \times 3\frac{1}{4} \times 4\frac{3}{4}$  in.; No. 1A,  $2\frac{1}{8} \times 3\frac{5}{8} \times 5\frac{1}{2}$  in. *Weight*—No. 1, 13 ounces; No. 1A, 16 ounces. *Lens*—Planatograph. *Shutter*—Kodak Ball Bearing (see page 28). *Finder*—Reversible, brilliant. Two tripod sockets.

## PRICES

	No. 1 $2\frac{1}{8} \times 3\frac{3}{16}$	No. 1A $2\frac{1}{8} \times 4\frac{1}{2}$
Premoette with Meniscus Lens and Premoette Shutter	\$ 5.00	\$ 6.00
Carrying Case	.75	.85
Premoette with Planatograph Lens and B. B. Shutter	9.00	10.00
Do, with Zeiss Kodak Anastigmat f.6.3 and Comp'nd Sh.	40.25	41.30
Carrying Case (sole leather)	1.00	1.25
Premo Film Pack (12 exposures)	.40	.50
Premo Portrait Attachment	.50	.50



# PREMOETTE JUNIOR



**M**ADE of aluminum, covered with genuine grain leather and beautifully finished in every detail, the Premoette Jr. is a camera which will instantly catch the eye, if only for its attractive appearance. But it is more than attractive. It sets a new standard for compactness in cameras and it makes excellent pictures.

One of the features of the Premo Film cameras has been their remarkably light weight and compact form as compared with any other type of camera. But in the Premoette Jr., we have even outdone our best previous efforts. Upon seeing it, you would hardly think it possible that so small a camera could make  $2\frac{1}{4} \times 3\frac{1}{4}$  pictures. It can be easily carried in any pocket or in a lady's hand bag.

A noticeable feature of the Premoette Jr. is the Kodak Ball Bearing shutter with which it is fitted. This shutter works with great smoothness and precision, and is graduated for  $\frac{1}{25}$  and  $\frac{1}{50}$  (snap shot) exposures as well as for time and bulb. With star-shaped leaves, it admits more

# PREMOETTE JUNIOR

light in a given time than the ordinary type of shutter. The cameras are offered with either meniscus achromatic or double Planatograph lenses, all carefully tested, and provision is made for easy focusing.

One of the unusual features of this camera is its direct view finder, a type which heretofore has never been furnished on any but the highest priced cameras. This finder springs into place automatically, and permits easy composition.

The negatives which the Premoette Jr. will make are of such quality as to yield excellent enlargements, and with this point in mind, many photographers prefer to use such a light, portable camera, and then by the simple process of enlargement, make larger pictures of almost any size from the particular negatives which they care about. And enlarging now is a very simple process. An enlarging camera can be had for \$2.00, with which you can make 5 x 7 enlargements from  $2\frac{1}{4} \times 3\frac{1}{4}$  negatives as easily as you can make contact prints. Or if you prefer your dealer will make them for you at slight expense.



When fitted with Premo portrait attachment, the Premoette Jr. becomes an excellent camera for home portraiture. It is an instrument which you should have with you at those times when your larger camera must be left at home.

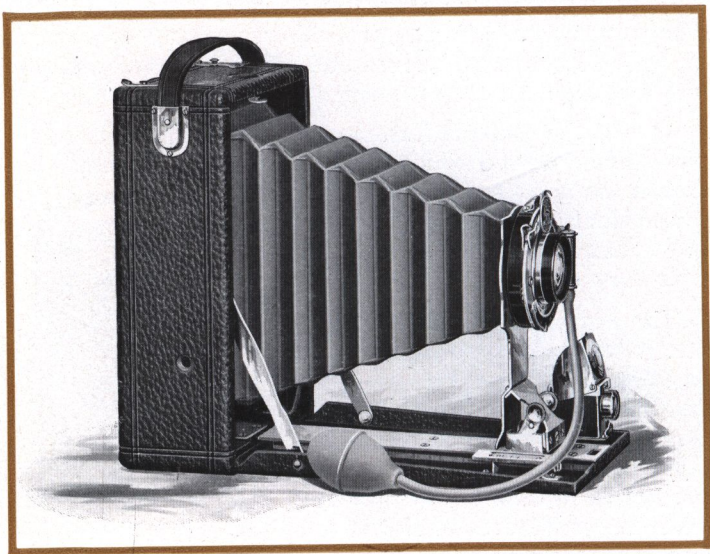
**Specifications:** *Capacity*—12 film pack exposures without reloading. *Dimensions*— $1\frac{3}{8} \times 3\frac{1}{4} \times 4\frac{3}{8}$  in. *Weight*—11 ozs. *Lens*—Single Achromatic Meniscus. *Shutter*—Kodak Ball Bearing (see page 28). *Finder*—Direct view. *Tripod Socket*—One.

## PRICES

Premoette Jr. with Achromatic Lens and Kodak B. B. Shutter	$2\frac{1}{4} \times 3\frac{1}{4}$
Premoette Jr. with Planatograph Lens and Kodak B. B. Shutter	\$5.00
Carrying Case	7.50
Premo Film Pack (12 exposures)	.75
Premo Portrait Attachment	.40
	.50



# FILM PREM O N o . 1



**I**N the Film Premo No. 1 our aim is to provide an ideal camera of the purely film type, in the three sizes of amateur pictures which are generally recognized as the standard sizes.

We have designed it to be as convenient and easy of manipulation as possible, and without reference to the requirements of the specialists, have fitted it only with the simple adjustments sufficient to enable the average photographer, whether experienced or not, to secure good pictures under all ordinary conditions where he would care to use a camera.

Working with this idea in mind, we are able to offer these cameras not only at moderate prices; but for compactness and light weight, for ease of loading and operating, the Film Premos have a considerable margin over any other type of cameras.

To load, merely open the back, drop in film pack, close the back and it is done. To make exposures, locate the

# F I L M P R E M O N o . 1

subject in finder and press the bulb. To change films for successive exposures, just pull out successive film pack tabs. Finally, to develop the film, you have the assurance of the Premo Film Pack Tank, which cannot fail if instructions are followed.

In designing this camera, we have not overlooked the fact that, however convenient, the most important consideration in any camera is the quality of its results. And quality is dependent upon lens, shutter and film. So we equip these cameras with our celebrated Planatograph lenses, each one carefully tested on its camera, and amply efficient for all ordinary photographic work. The shutter is the Kodak Ball Bearing, the finest type of single valve shutter, and exceptionally effective for snap shot work. Finally, Premo Film Pack film is from the same stock as the Eastman N. C., the best in the world.

These cameras have brilliant reversible finders and two tripod sockets; accurate focusing scales and automatic standard clamps.

The 3 x 5  $\frac{1}{4}$  size is especially suitable for post card and artistic landscape composition, while any of them when fitted with Premo Portrait attachment will make excellent home portraits.

Film Premos No. 1 are very attractive in appearance; they are made of seasoned wood, with bed and back panel of aluminum, covered with seal grain leather, and metal parts are beautifully nickeled.

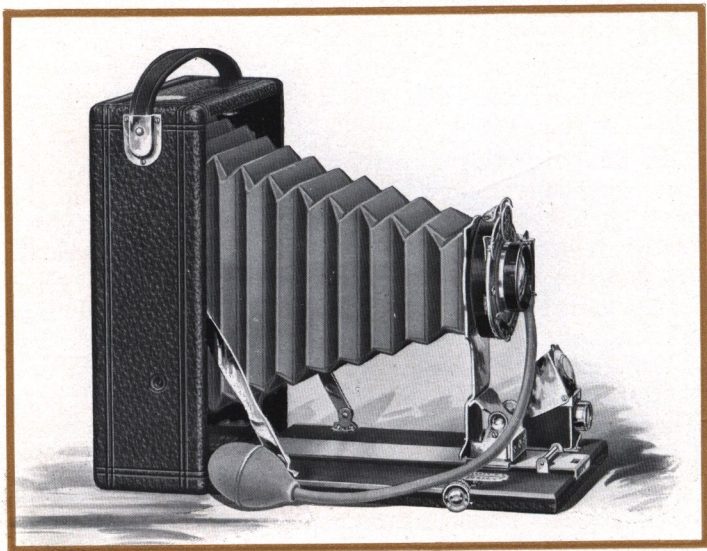
**Specifications:** *Capacity*—12 film exposures. *Box*—Mahogany. *Bed*—Aluminum. *Dimensions*— $3\frac{1}{4} \times 4\frac{1}{4}$ ,  $2\frac{1}{4} \times 4 \times 5\frac{1}{2}$  in.;  $3 \times 5\frac{1}{4}$ ,  $2\frac{1}{4} \times 4 \times 6\frac{3}{4}$  in.;  $4 \times 5$ ,  $2\frac{1}{4} \times 4\frac{3}{4} \times 6$  in. *Weight*— $3\frac{1}{4} \times 4\frac{1}{4}$ , 19 ounces;  $3 \times 5\frac{1}{4}$ , 25 ounces;  $4 \times 5$ , 25 ounces. *Lens*—Planatograph. *Shutter*—Kodak Ball Bearing (see page 28). *Tripod Sockets*—Two. *Finder*—Reversible brilliant. Auto. Standard Clamp.

## P R I C E S

	$3\frac{1}{4} \times 4\frac{1}{4}$	$3 \times 5\frac{1}{4}$	$4 \times 5$
Film Premo No. 1, with Planatograph Lens and Kodak Ball Bearing Shutter . . . . .	\$10.00	\$12.50	\$12.50
Sole Leather Carrying Case . . . . .	1.25	1.50	1.50
Premo Film Pack (12 exposures) . . . . .	.70	.75	.90
Premo Portrait Attachment . . . . .	.50	.50	.50



# POCKET PREMO C



**T**HE combination of a film camera with the desirable feature of ground glass focusing was never conveniently practical until the advent of the Premo Film Pack Adapter. This device has enabled us to produce a line of cameras offering the advantage of ground glass for sharp focusing and accurate composition, and at the same time accommodating films or plates with equal facility.

The Pocket Premo C is such a camera, and taking into consideration its additional advantages, it is furnished at a remarkably moderate price.

While it accommodates either films or plates and has a ground glass for focusing, it is still lighter and more compact than the average purely film camera, and it can be depended upon to produce sharp, clear pictures under all ordinary conditions, day in and day out.

It is fitted with Planatograph lenses, the very best obtainable outside of the high grade anastigmats, and has also the Kodak Ball Bearing Shutter. This shutter is the most

# POCKET PREMO C

dependable and accurate of all single valve shutters. It works on ball bearings, and its leaves opening in the shape of a star admit much more light in a given time than does the ordinary type of shutter. This feature makes the camera specially valuable for snap shot work. The shutter is graduated for  $\frac{1}{50}$  to  $\frac{1}{1000}$  second as well as for time and bulb.

To make focusing easy a rack and pinion focusing attachment is provided on the bed, while a reversible, brilliant finder and focusing scale is furnished for use in snap shot work or wherever the ground glass is not used, for of course you don't have to focus on the glass unless you want to. Two tripod sockets are supplied.

The camera is made for two most popular sizes of amateur pictures, the  $3 \times 5 \frac{1}{4}$  being especially attractive for post card, full length and bust portraiture and artistic landscape work. The Premo Portrait attachment makes a very valuable addition to either size for home portraiture, and the ground glass focusing advantage will be found very desirable for this branch of photography.

The camera is handsomely finished, covering is genuine leather and metal parts are nickeled. For one who wishes to get a very portable and reliable outfit, suitable for all kinds of general amateur work, at a small outlay, the Pocket Premo C is an exceptional value.

**Specifications:** *Capacity*—12 film or 2 plate exposures. *Box*—Mahogany. *Bed*—Mahogany, with rack and pinion for focusing. *Finder*—Reversible, hooded brilliant. *Tripod Sockets*—Two. *Lens*—Planatograph. *Shutter*—Kodak Ball Bearing (see page 28). *Dimensions*— $3 \frac{1}{4} \times 4 \frac{1}{4}$ ,  $2 \frac{1}{16} \times 4 \frac{1}{4} \times 5 \frac{1}{2}$  in.;  $3 \times 5 \frac{1}{4}$ ,  $2 \frac{1}{4} \times 4 \frac{1}{2} \times 6 \frac{3}{4}$  in. *Weight*— $3 \frac{1}{4} \times 4 \frac{1}{4}$ , 21 ozs.;  $3 \times 5 \frac{1}{4}$ , 28 ozs. Automatic Standard Clamp.

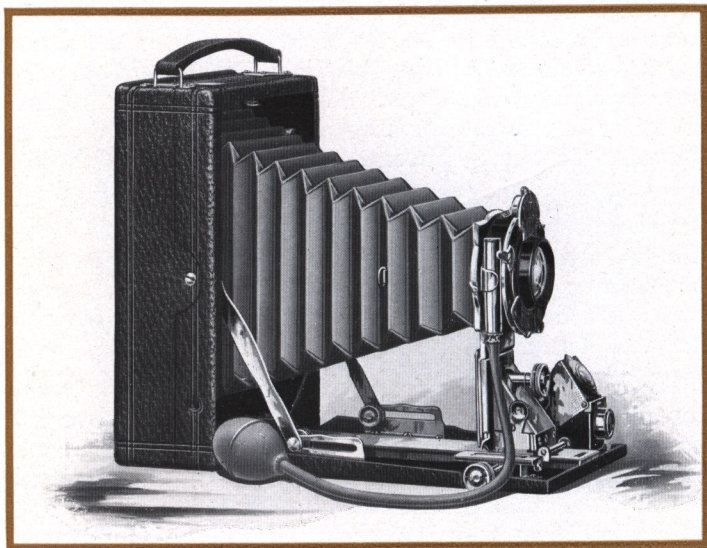
## PRICES

Pocket Premo C with Planatograph Lens and Kodak	$3 \frac{1}{4} \times 4 \frac{1}{4}$	$3 \times 5 \frac{1}{4}$
Ball Bearing Shutter and Plate Holder . . . . .	\$12.00	\$15.00
Double Plate Holder . . . . .	.80	1.00
Sole Leather Carrying Case . . . . .	1.50	1.75
Premo Film Pack Adapter . . . . .	1.00	1.50
Premo Film Pack (12 exposures) . . . . .	.70	.75
Premo Portrait Attachment . . . . .	.50	.50

NOTE—The  $3 \times 5 \frac{1}{4}$  size accommodates  $3 \frac{1}{4} \times 5 \frac{1}{2}$  plate holders and dry plates.



# FILMPLATE PREMO



**T**HE Filmplate Premo is an exceptionally fine camera, made in an exceptional way for exceptional work. It will do all that the Pocket Premo C will in the same simple way, and in addition, it is fully equipped for more serious and more particular work.

It is regularly supplied with the best lens obtainable outside of the anastigmats, fitted to Kodak automatic shutter which works with bulb or finger release for time, bulb, instantaneous and retarded speed exposures, and which in addition is supplied with the Kodak Autotime Scale.

It is fitted with rising and sliding front and swing bed for use in increasing or decreasing foreground without distortion.

With accurate focusing scale and brilliant finder, the Filmplate Premo is a splendid snap shot instrument. Whereas, for particular work, the ground glass is instantly available for composition or focusing, whether films or plates are being used. In a word, with all its other features it has those of the focusing camera, as described on page 4.

# FILMPLATE PREMO

And all these advantages are combined in a camera which can be carried around as easily as the most portable film camera, for the Filmplate Premo is fully as compact as the ordinary camera taking films exclusively.

The  $3 \times 5 \frac{1}{4}$  size is especially suitable for post card work, for bust and full length portraiture and for artistic landscape compositions, while to those who like large size pictures the  $5 \times 7$  is strongly recommended for its extreme lightness and compactness as compared with any other  $5 \times 7$  camera on the market, designed exclusively for either plates or films.

The box of this camera is made of thoroughly seasoned wood, front bed of aluminum, all covered with selected leather of beautiful seal grain. Particular attention is called to the special clamp supplied, which automatically fastens the standard to the bed wherever set, so there is no possibility of slipping forward or backward. All metal parts are highly nickeled, which, in combination with the red bellows, gives the camera a strikingly rich appearance.

Fitted with Premo Portrait Attachment any Filmplate Premo is excellent for home portraiture.

**Specifications:** *Capacity*—12 film or 2 plate exposures. *Box*—Mahogany. *Bed*—Aluminum. Rack and pinion for fine focusing. *Front*—Rising and sliding. *Finder*—Reversible brilliant. *Tripod Sockets*—Two. *Lens*—Planatograph. *Shutter*—Kodak Automatic with Autotime Scale (see page 28). *Dimensions*— $3\frac{1}{4} \times 4\frac{1}{4}$ ,  $2\frac{1}{4} \times 4\frac{1}{4} \times 5\frac{3}{8}$  in.;  $3 \times 5\frac{1}{4}$ ,  $2\frac{1}{4} \times 4\frac{1}{4} \times 6\frac{5}{8}$  in.;  $4 \times 5$ ,  $2\frac{1}{4} \times 4\frac{7}{8} \times 6\frac{1}{8}$  in.;  $5 \times 7$ ,  $2\frac{5}{8} \times 6 \times 8\frac{3}{8}$  in. *Weight*— $3\frac{1}{4} \times 4\frac{1}{4}$ , 30 ozs.;  $3 \times 5\frac{1}{4}$ , 33 ozs.;  $4 \times 5$ , 33 ozs.;  $5 \times 7$ , 56 ozs. Automatic Standard Clamp.

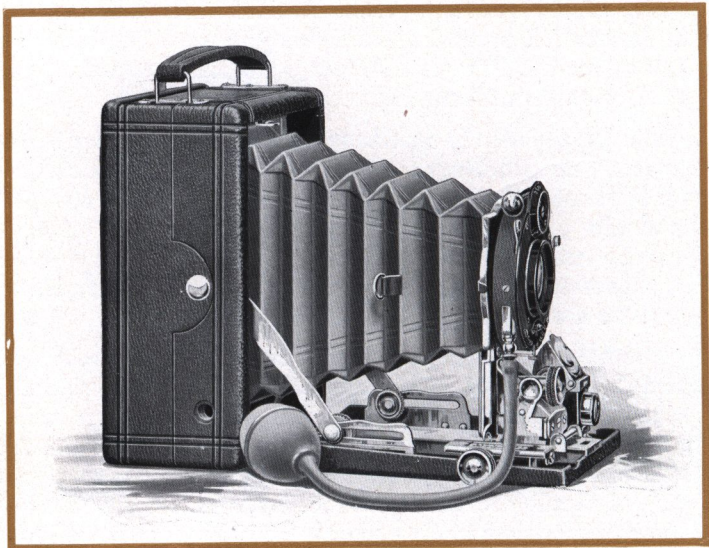
## PRICES

	$3\frac{1}{4} \times 4\frac{1}{4}$	$3 \times 5\frac{1}{4}$	$4 \times 5$	$5 \times 7$
Filmplate Premo with Planatograph Lens, Kodak Auto. Shutter, Autotime Scale, Plate Holder and Film Pack Adapter	\$24.00	\$26.50	\$26.50	\$35.00
Do with Zeiss Kodak Anastigmat <i>f</i> .6.3 and D. V. Auto. Shutter . . . . .	44.50	51.50	51.50	74.50
Do with Compound Shutter . . . . .	52.80	62.30	62.30	85.05
Sole Leather Carrying Case . . . . .	1.75	2.00	2.00	2.50
Premo Film Pack (12 exposures) . . . . .	.70	.75	.90	1.60
Premo Portrait Attachment . . . . .	.50	.50	.50	.50

NOTE—The  $3 \times 5\frac{1}{4}$  size accommodates  $3\frac{1}{4} \times 5\frac{1}{4}$  plate holders and dry plates.



## FILMPLATE PREMO SPECIAL



**F**OR the best possible pictures under all conditions, an anastigmat lens equipment is necessary. For instance, in instantaneous work a first-class R. R. lens admits sufficient light on clear, bright days to obtain well timed exposures as fast as  $\frac{1}{100}$  of a second; but in dull lights, snap shots are impossible. Whereas, with an anastigmat lens, the construction and optical corrections are such that it will produce satisfactory pictures at a larger aperture. The larger opening admits more light by about 60%. Hence snap shots can be made with an anastigmat on dull days, or even indoors under favorable light conditions, where little or no impression could be obtained with an R. R. lens.

This advantage, and others, every year are coming to be more appreciated, especially by the advanced amateur photographer.

With a knowledge of this condition, we have set to work to provide a camera par excellent for anastigmat lens workers and those who always insist upon the best.

# FILMPLATE PREMO SPECIAL

We have modeled this camera upon the Filmplate Premo for three reasons: First, because of its ground glass focusing feature, an especially valuable consideration where one has a fine anastigmat lens. Second, because it takes films or plates at the choice of the operator or as the occasion may require. Last, because the camera is so light, compact, and convenient to operate.

The camera is fitted with the Zeiss Kodak Anastigmat, the lens made expressly for hand camera work, and the Compound shutter, which attains a speed of  $\frac{1}{250}$  second in the  $3\frac{1}{4} \times 4\frac{1}{4}$  size,  $\frac{1}{150}$  second in the  $3\frac{1}{4} \times 5\frac{1}{2}$  and  $4 \times 5$  sizes, and  $\frac{1}{100}$  second in the  $5 \times 7$  size, working also, of course, for time and bulb. This equipment cannot be surpassed. A rising and sliding front, swing bed, reversible finder, two tripod sockets, and rack and pinion focusing attachment are provided.

In keeping with the high grade of work for which this camera is designed, we have constructed and finished it in the best possible manner. The covering is a rich black morocco, the bellows black leather, and metal parts are handsomely nickered, producing a most attractive combination. Particular attention is called to the 3A size for its all-around popularity, and to the  $5 \times 7$  for its unusual compactness for a  $5 \times 7$  camera of its great capabilities.

**Specifications:** *Capacity*—12 film or 2 plate exposures. *Box*—Mahogany. *Bed*—Aluminum. Rack and pinion for fine focusing. *Front*—Rising and sliding. *Finder*—Reversible brilliant. *Tripod Sockets*—Two. *Lens*—Zeiss Kodak Anastigmat f.6.3. *Shutter*—Compound. *Dimensions*— $3\frac{1}{4} \times 4\frac{1}{4}$ ,  $2\frac{1}{8} \times 4\frac{1}{8} \times 5\frac{3}{8}$  in.;  $3\frac{1}{4} \times 5\frac{1}{2}$ ,  $2\frac{1}{8} \times 4\frac{1}{8} \times 7\frac{1}{8}$  in.;  $4 \times 5$ ,  $2\frac{1}{8} \times 4\frac{1}{8} \times 6\frac{1}{8}$  in.;  $5 \times 7$ ,  $2\frac{3}{8} \times 6 \times 8\frac{3}{8}$  in. *Weight*— $3\frac{1}{4} \times 4\frac{1}{4}$ , 26 ozs.;  $3\frac{1}{4} \times 5\frac{1}{2}$ , 36 ozs.;  $4 \times 5$ ,  $28\frac{1}{2}$  ozs.;  $5 \times 7$ , 48 ozs. Automatic Standard Clamp.

## PRICES

	$3\frac{1}{4} \times 4\frac{1}{4}$	3A ( $3\frac{1}{4} \times 5\frac{1}{2}$ )	$4 \times 5$	$5 \times 7$
Filmplate Premo Special with Zeiss Kodak Anastigmat f.6.3 and Compound Shutter and Film Pack Adapter	\$54.00	\$65.00	\$65.00	\$88.00
Grain Leather Case, velvet lined . . .	2.75	3.00	3.00	4.00
Premo Film Pack (12 exposures) . . .	.70	.80	.90	1.60
Premo Portrait Attachment . . .	.50	.50	.50	



# P O N Y P R E M O S

*P*ONY PREMOS have a reputation behind them. For over twenty-five years they have stood as the standard for plate cameras.

Certainly so many years of experience and experimentation, backed up by the standard of quality insisted upon in our factory, ought to produce a most superior article.

And that's just what the purchaser of a Pony Premo can expect — the very best possible camera in every grade, for the same care and workmanship and inspection are expended upon the cheaper as upon the most expensive Pony Premo.

These cameras are furnished at fair prices consistent with the workmanship, high grade material and the reliability which is built into them. In purchasing a camera it will pay in the end to purchase the goods with the reputation and with the quality, rather than be misled by the false argument of the imitator — the argument of price.

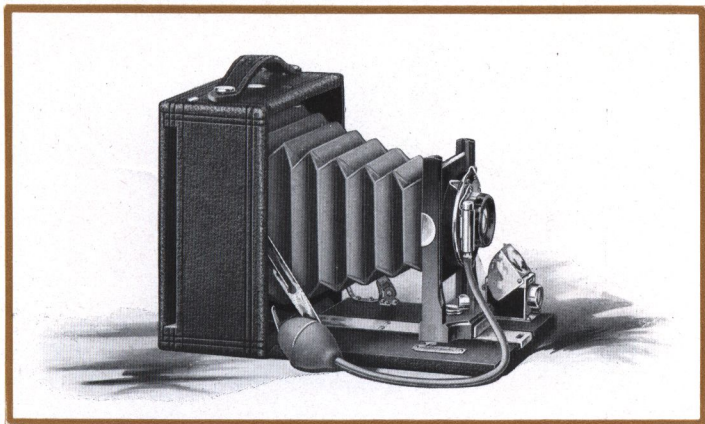
Pony Premos have many special features, one of the most convenient of which is the spring catch reversible back.

The catches which hold these backs are fastened to the camera box by stout springs. To remove the back for reversing, simply turn it down on the catches to the point where it slips off easily, when the catches spring back into place.

Another feature is the receding ground glass panel, which is constructed so that when pulled out to its limit, it catches and holds there, making it an easy matter to insert holder or adapter without the possibility of jarring or twisting the camera after it has been focused.

All 5 x 7 Pony Premos are slotted in the back so that vertical cut off boards may be used for making two exposures on one plate. And do not lose sight of the fact that any of these cameras, up to the 5 x 7 size, take plates or daylight loading films with equal facility, and offer the advantage of ground glass focusing with either.

## PONY PREMOS Nos. 1 & 2



**T**O one who wishes a ground glass focusing camera at a moderate outlay, these offer excellent values. They take films or plates with equal facility, and are constructed throughout of mahogany with nicked brass fittings. The lens and shutter equipment is carefully selected, and while the instruments do not have the special features of the higher priced Premos, they will make good pictures under all ordinary conditions which the amateur will meet. The two models are identical with one exception. The No. 1 has no reversible back, while the No. 2 has.

### Specifications:

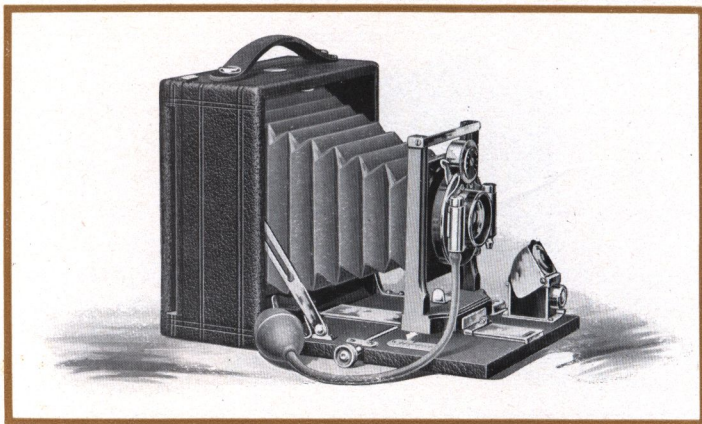
*Capacity*—12 film or 2 plate exposures. *Box*—Mahogany, leather covered. *Front*—Rising and falling. *Carrying Case*—Imitation leather with compartment for holders. *Finder*—Reversible, hooded brilliant. *Tripod Sockets*—No. 1, two; No. 2, one. *Lens*—Planatograph. *Shutter*—S. V. Automatic (see page 29). *Dimensions*—No. 1,  $2\frac{1}{2} \times 5\frac{1}{4} \times 6\frac{1}{4}$  in.; No. 2,  $4 \times 5, 2\frac{1}{2} \times 6 \times 6$  in.;  $5 \times 7, 3\frac{1}{4} \times 8\frac{1}{4} \times 8\frac{1}{4}$  in. *Weight*—No. 1, 26 ozs.; No. 2,  $4 \times 5, 36$  ozs.;  $5 \times 7, 52$  ozs.

### PRICES

	4x5	5x7
Pony Premo No. 1, with Planatograph Lens and S. V. Auto. Shutter, Case and Holder . . . . .	\$12.00	
Do., No. 2 . . . . .	14.00	\$18.50
Premo Film Pack Adapter . . . . .	1.50	2.50
Premo Film Pack (12 exposures) . . . . .	.90	1.60
Premo Portrait Attachment . . . . .	.50	.50



# PONY PREMO No. 3



**T**HIS is an excellent type of the ground glass focusing camera at a medium price. It is fitted with our spring catch reversible back, has a rack and pinion for convenience in focusing, Planatograph lens and double valve automatic shutter. This shutter works not only for time, bulb and instantaneous exposures, but is also graduated to fractional parts of a second.

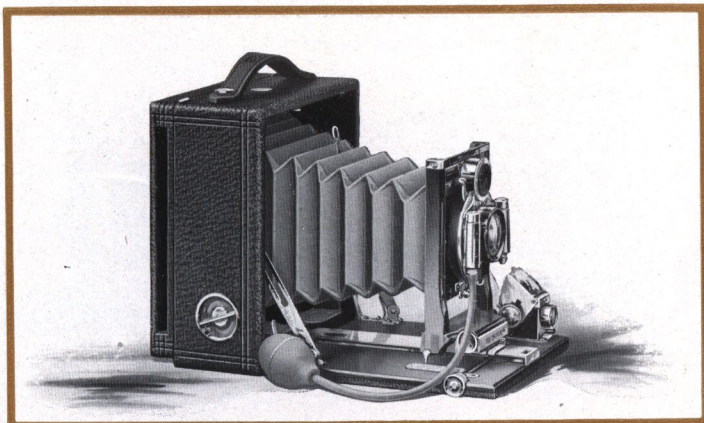
Pony Premo No. 3 takes films or plates with equal facility; it is handsomely finished and covered with genuine grain leather. Metal parts are nicked.

**Specifications:** *Capacity*—12 film or 2 plate exposures. *Box*—Mahogany, leather covered. *Bed*—Mahogany; rack and pinion attachment for fine focusing. *Back*—Spring catch, reversible. *Front*—Rising and falling. *Finder*—Hooded brilliant, reversible. *Tripod Socket*—One. *Lens*—Planatograph. *Shutter*—Double Valve Automatic (see page 29). *Carrying Case*—Sole leather, with compartment for holders. *Dimensions*—4 x 5, 2½ x 6 x 6 in.; 5 x 7, 3¼ x 8¼ x 8¼ in. *Weight*—4 x 5, 33 ozs.; 5 x 7, 56 ozs.

## PRICES

Pony Premo No. 3, with Planatograph Lens and D. V.	4 x 5	5 x 7
Auto. Shutter, Carrying Case and Plate Holder	\$20.00	\$26.00
Premo Film Pack Adapter	1.50	2.50
Premo Film Pack (12 exposures)	.90	1.60
Premo Portrait Attachment	.50	.50

# PONY PREMO No. 4



**A**DAPTED for a wider range of work than its predecessors, this model incorporates all their good points in addition to special features of its own. It has long bellows draw, so that back combination of lens may be used for telephoto work, and is equipped with self-centering swing back pivoted at the centre.

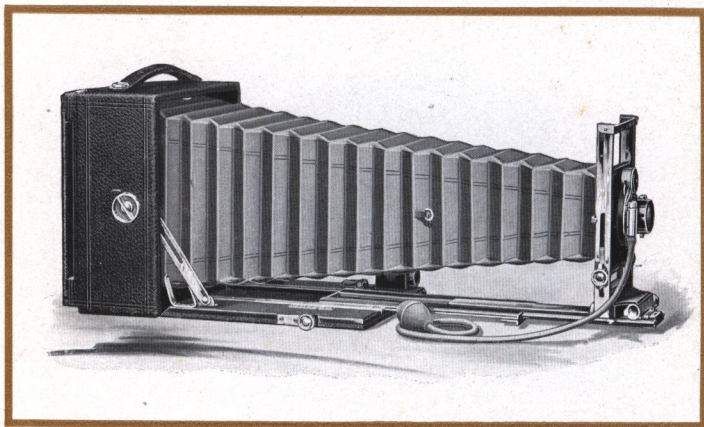
**Specifications:** *Capacity*—12 film or 2 plate exposures. *Box*—Mahogany, leather covered. *Bed*—Mahogany, rack and pinion for fine focusing. *Back*—Spring catch reversible. *Swing*—Vertical. *Front*—Rising and falling. *Finder*—Hooded brilliant, reversible. *Tripod Socket*—One. *Lens*—Planatograph. *Shutter*—Double Valve Automatic (see page 29). *Carrying Case*—Sole leather, with compartment for holders. *Bellows*—Red leather; draw 4 x 5, 11½ in.; 5 x 7, 15½ in. *Dimensions*—4 x 5, 3 x 6 x 6 in.; 5 x 7, 3¾ x 8¼ x 8¼ in. *Weight*—4 x 5, 47 ozs.; 5 x 7, 71 ozs. A trifle heavier and larger with Stereo Equipment.

## PRICES

	4 x 5	5 x 7
Pony Premo No. 4, with Planatograph Lens and D. V. Auto. Shutter, Carrying Case and Plate Holder . . .	\$24.00	\$32.00
With Zeiss Kodak Lens f.6.3 and D. V. Auto. Shutter . . .	49.00	71.50
Do., with Compound Shutter . . . . .	59.80	82.05
Do., with Stereo Auto. Shutter and Planatograph Lenses . . . . .		50.00
Premo Film Pack Adapter . . . . .	1.50	2.50
Premo Film Pack (12 exposures) . . . . .	.90	1.60
Premo Portrait Attachment . . . . .	.50	.50



## PONY PREMO No. 6



**T**HE long bellows draw, the complete equipment and the variety of patented features of this camera, make it suitable not only for amateur photography but for special business and technical purposes as well.

The bellows is of such length as to readily accommodate the single combinations of any lens system, and also to meet the capacity requirements of telephoto lenses of the highest magnifications. This feature is also a valuable one in the processes of enlarging, copying and portraiture.

It is regularly fitted with the Planatograph lens—the best obtainable aside from the anastigmats, but it is constructed with the view of accommodating anastigmat lenses of any kind when desired.

The standard is very rigid, it is composed largely of metal, and the rising and falling front is actuated by pinion device which will lock at any point, affording a safe support for the heaviest lenses. The lens board is held firmly in place by a spring catch, but is easily removable.

The bed is triple extension, all actuated by but one pinion, which is provided with simple locking device, permitting the extensions to be locked firmly at any point. Particular attention is called to the swing back of this



# PONY PREMO No. 6

camera, which is pivoted at the center—a decided advantage, in preventing distortion, over the ordinary type of camera, where the bed merely swings upward.

With all these advantages the Pony Premo No. 6 can be successfully used even by the beginner. It insures accuracy and proper composition by its ground glass focusing feature. For a camera of its capabilities it is exceedingly light and compact. Its special features do not have to be reckoned with excepting when needed, and the Premo adapter will convert it at any time into a daylight film camera, making a neat, attractive outfit for vacation or tourist use.

The shutter and metal parts of the Pony Premo No. 6 are highly nicked. Wood is properly seasoned, hand polished mahogany, and the covering is genuine grain leather of best quality.

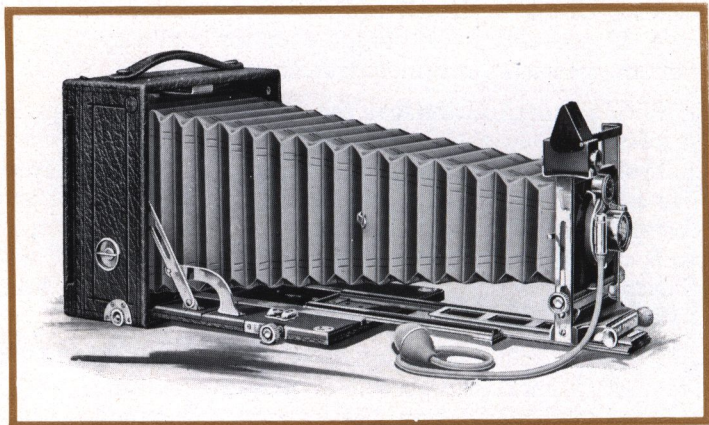
**Specifications:** *Capacity*—12 film or 2 plate exposures. *Box*—Mahogany, leather covered. *Bed*—Triple extension; rack and pinion actuated. *Back*—Spring catch, reversible. *Swing*—Vertical. *Front*—Rising and falling; rack and pinion actuated. *Lens Board*—Removable; size, 4 x 5, 2½ x 2½ in.; 5 x 7, 3½ x 3½ in.; 6½ x 8½, 4½ x 4½ in. *Finder*—Hooded brilliant, reversible. *Tripod Sockets*—Two. *Case*—Sole leather, plush lined with compartment for holders. *Lens*—Planatograph. *Shutter*—Double Valve Automatic (see page 29). *Bellows*—Red leather; draw, 4 x 5, 14⅝ in.; 5 x 7, 19½ in.; 6½ x 8½, 24 in. *Dimensions*—4 x 5, 3½ x 6 x 6, in.; 5 x 7, 4 x 8¼ x 8¼ in.; 6½ x 8½, 5 x 10 x 10 in. *Weight* 4 x 5, 3¼ lbs.; 5 x 7, 7 lbs.; 6½ x 8½, 8½ lbs. Automatic Standard Clamp. A trifle heavier and larger with Stereo Equipment.

## PRICES

	4 x 5	5 x 7	6½ x 8½
Pony Premo No. 6, with Planatograph Lens and D. V. Auto. Shutter, Carrying Case and Plate Holder	\$37.00	\$47.00	\$62.00
With Zeiss Kodak Anastigmat f.6.3 and D. V. Auto. Shutter	62.00	86.50	111.50
Do., with Compound Shutter	72.80	97.05	124.20
With B. & L. Zeiss Protar VIIa, f.6.3 and D. V. Auto. Shutter	92.50	120.00	150.50
Do., with Compound Shutter	103.30	130.55	163.20
Pony Premo No. 6, with Stereo Auto. Shutter and Planatograph Lenses		65.00	
Premo Film Pack Adapter	1.50	2.50	
Premo Film Pack (12 exposures)	.90	1.60	



## P O N Y P R E M O N o . 7



**T**HE finest hand camera manufactured, the complete equipment and superb finish of the Pony Premo No. 7 will at once appeal to him who wants the best outfit that money can buy.

Nothing has been forgotten or overlooked in its construction. Aside from every ordinary photographic use, it is suitable for copying, enlarging, telephotography, and provision is made for the use of lenses of the widest angle, so necessary in certain branches of photography.

For this latter purpose, it is necessary only to unclasp the two supplementary side arms, which drop the bed down on a hinge, removing it from the path of the shortest focus lens. Then a short supplementary bed, carried conveniently at the top of the camera when not in use, is substituted for the regular bed, affording easy focusing facilities.

The movable extensions are constructed entirely of metal, are actuated by a single pinion and attached to the wooden bed by metal angle pieces, making the operation impervious to changing atmospheric conditions. The swing back is actuated by rack and pinion, with locking device, and the bellows is of such length that either of the Planatograph lens combinations can be used singly or high power tele-



# P O N Y P R E M O N o . 7

photo attachments may be fitted. The rising and falling front is operated by rack and pinion with locking device. The standard clamp is automatic. An accurate double spirit level is supplied; it has a hooded, reversible finder of the greatest brilliancy, and the back is our new spring catch reversible.

The finish and general workmanship of the instrument must be seen to be appreciated. The shutter and all metal parts are highly nicked and the covering is of the best leather, specially selected for its beautiful grain. The carrying case is of sole leather, lined with the best red plush. Like all Pony Premos, this model takes plates or the Premo Film Pack with all its conveniences, while its adjustments and construction are such that it will make the most of every advantage of any anastigmat lens.

## Specifications:

*Capacity*—12 film or 2 plate exposures. *Box*—Mahogany, leather covered. *Bed*—Mahogany, with triple extension. *Back*—Spring catch, reversible. *Swing*—Vertical; rack and pinion actuated, with locking device. *Front*—Rising and falling; rack and pinion actuated, with locking device. *Lens Board*—Removable; size, 4 x 5, 2½ x 2½ in.; 5 x 7, 3½ x 3½ in.; 6½ x 8½, 4½ x 4½ in. *Finder*—Hooded brilliant, reversible. *Tripod Sockets*—Two. *Lens*—Planatograph. *Shutter*—Double Valve Automatic (see page 29). *Carrying Case*—Sole leather, plush lined, with compartment for holders. *Bellows*—Red leather; draw 4 x 5, 13½ in.; 5 x 7, 19 in.; 6½ x 8½, 22 in. *Dimensions*—4 x 5, 3½ x 6½ x 6½ in.; 5 x 7, 4 x 8½ x 8½ in.; 6½ x 8½, 5 x 9½ x 9½ in. *Weight*—4 x 5, 3¼ lbs.; 5 x 7, 5½ lbs.; 6½ x 8½, 9 lbs. Automatic Standard Clamp. A trifle heavier and larger with Stereo Equipment.

## PRICES

	4 x 5	5 x 7	6½ x 8½
Pony Premo No. 7, with Planatograph Lens and D. V. Auto. Shutter, Carrying Case and Plate Holder . . . . .	\$ 50.00	\$ 60.00	\$ 75.00
With Zeiss Kodak Anastigmat Lens f/6.3 and D. V. Auto. Shutter . . . . .	75.00	99.50	124.50
Ditto, with Compound Shutter . . . . .	85.80	110.05	137.20
With B. & L.-Zeiss Protar VIIa Lens and D. V. Auto. Shutter . . . . .	105.50	133.00	163.50
Ditto, with Compound Shutter . . . . .	116.30	143.55	176.20
Pony Premo No. 7, with Stereo Auto. Shutter and Planatograph Lenses . . . . .		78.00	
Premo Film Pack Adapter . . . . .	1.50	2.50	
Premo Film Pack . . . . .	.90	1.60	



# SHUTTERS FOR PREMOS

## KODAK BALL BEARING SHUTTER

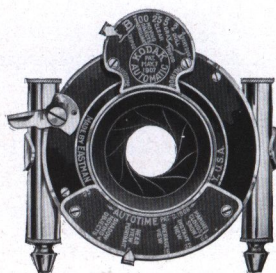
This shutter works automatically and operates with remarkable smoothness and precision. The leaves are made in five segments, mounted entirely on ball bearings, and open and close in the form of a star, admitting a much greater amount of light in the same space of time than any other type of shutter. All except the No. 0 have variable indicated speeds of  $\frac{1}{25}$ ,  $\frac{1}{50}$  and  $\frac{1}{100}$  second, operate for bulb or time exposures, and are fitted with indicator for registering each exposure as made. The



No. 0 is graduated for speeds of  $\frac{1}{25}$  and  $\frac{1}{50}$ , has no registering device and operates with finger release only. Supplied with double lens Premoette, Film Premo No. 1 and Pocket Premo C; the No. 0 with Premoette Jr.

## KODAK AUTOMATIC SHUTTER AND KODAK AUTOTIME SCALE

The Kodak Automatic Shutter is carefully adjusted for time, bulb and instantaneous exposures. It is also graduated for fractional parts of a second, and is unusually accurate upon all its speeds. It is regularly fitted with the Kodak Autotime Scale and is supplied on the Filmplate Premo. The Kodak Autotime Scale greatly reduces the liability of error in exposure, as it automatically indicates the proper time and stop opening for subjects under any condition of outdoor photography and it is exceedingly simple to use. It can be easily attached to any pneumatic release shutter. Merely unscrew regular scales and substitute Autotime. Specify shutter when ordering.

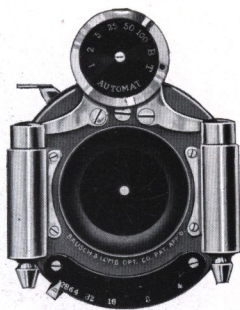


Autotime Scale for Compound Shutter, \$1.50. For other Shutters, \$1.00.

# SHUTTERS FOR PREMOS

## B. & L. AUTOMATIC SHUTTER

This shutter is automatic in action, working for time, bulb, instantaneous and retarded exposures without previous setting. The Automatic is operated by either bulb attachment or finger release. It is a very compact shutter and for exposures of  $1$ ,  $\frac{1}{2}$ ,  $\frac{1}{5}$ ,  $\frac{1}{25}$ ,  $\frac{1}{50}$ ,  $\frac{1}{100}$  seconds, works with great accuracy. This shutter is regularly supplied with the Pony Premos Nos. 3, 4, 6 and 7.



## SINGLE VALVE AUTOMATIC SHUTTER

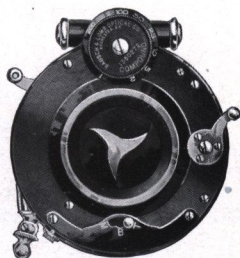


This is a first-rate automatic shutter, and while it does not have the retarded speeds of the double valve shutter, it is fully as reliable for time, bulb and instantaneous exposures. Has Iris diaphragm and is regularly supplied with Pony Premos Nos. 1 and 2.

## COMPOUND SHUTTER

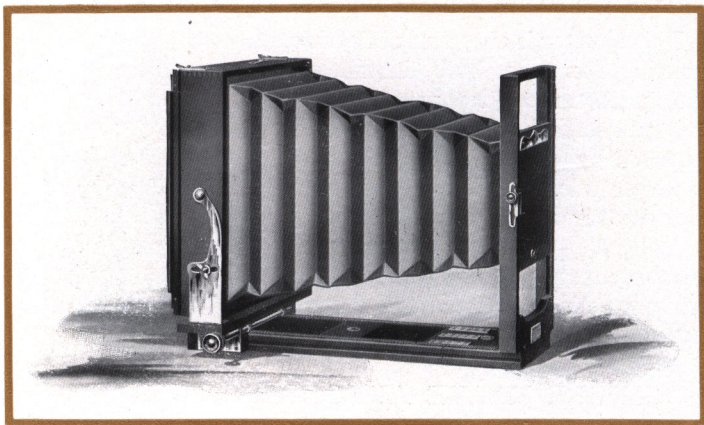
The Compound Shutter is an automatic and setting shutter combined. Automatically, either time or bulb exposures may be made, while the shutter may be set for speeds up to  $\frac{1}{150}$ ,  $\frac{1}{200}$  or  $\frac{1}{250}$  second according to size.

The shutter leaves are formed of segments opening in star shape, giving even illumination over the entire plate the instant the exposure is started, and an Iris diaphragm is provided. Supplied on the Filmplate Premo Special and as a special equipment with Premo cameras that take anastigmat lenses.





# THE R. O. C. VIEW



**A** *WAYS* a very popular, inexpensive view camera, new improvements added to it this year make the R. O. C. View all the more desirable. The front board and standard are now made so wide that stereoscopic lenses may be used if desired, and the standard is strong and rigid.

The back is supplied with horizontal and vertical cut out boards, so that four pictures may be made on one plate. The R. O. C. View has both vertical and horizontal swings, rising and falling front and reversible back. It is especially adapted for interior work as it focuses from the rear only, and the back may be moved as close to the front as desired so that extreme wide angle lenses may be used.

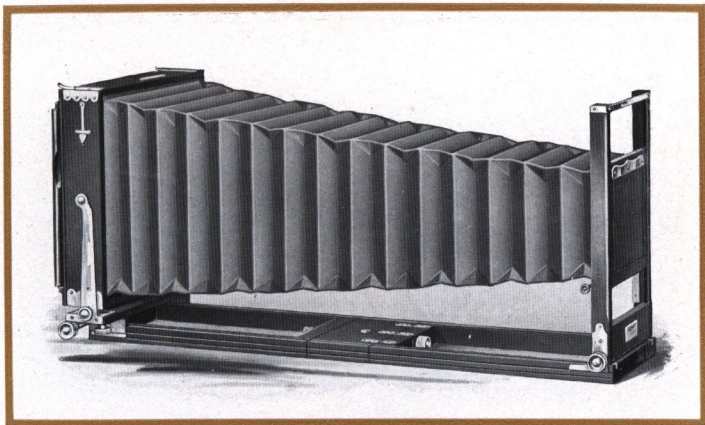
**Specifications:** *Bellows Draw*—5 x 7, 14 in.; 6½ x 8½, 15½ in.; 8 x 10, 17 in. *Weight*—5 x 7, 4¾ lbs.; 6½ x 8½, 6 lbs.; 8 x 10, 6¾ lbs. *Size of Lens Board*—5 x 7, 3¾ x 6¾ in.; 6½ x 8½, 4½ x 6½ in.; 8 x 10, 5 x 6 in. *Carrying Case*—Square style canvas.

## PRICES

	5 x 7	6½ x 8½	8 x 10
R. O. C. View with Case and Holder . . .	\$12.00	\$13.00	\$14.00
Symmetrical Lens and D. V. Auto. Shutter (extra) . . . . .	13.50	18.50	21.50
Extra Carrying Case . . . . .	1.75	2.00	2.25

[30

# EMPIRE STATE VIEW



**N**o view camera has so withstood the test of time as has the Empire State. For over fifteen years it has been the favorite among commercial photographers for its peculiar adaptability for all such work.

Has horizontal and vertical swings, reversible back with cut out boards and rising and falling front, actuated by rack and pinion, and a very great focal capacity. Constructed of hand rubbed mahogany, with lacquered brass fittings and built to withstand rough usage. Price includes long style carrying case and one plate holder.

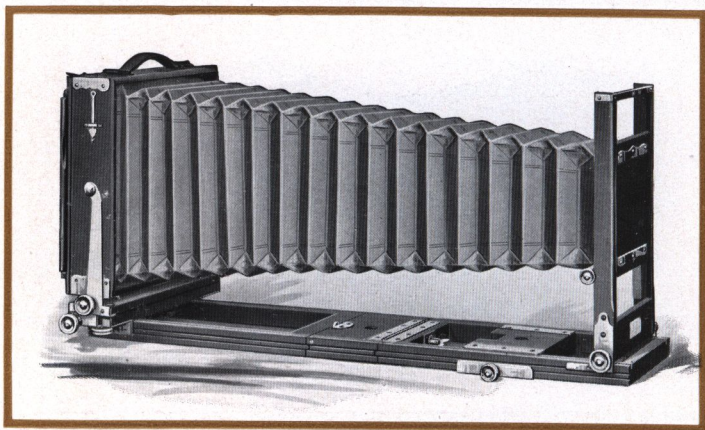
**Specifications:** *Bellows Draw*—5 x 7, 22 in.; 6½ x 8½, 27 in.; 8 x 10, 30 in.; 11 x 14, 37 in.; 14 x 17, 48 in. *Weight*—5 x 7, 6 lbs.; 6½ x 8½, 7½ lbs.; 8 x 10, 9½ lbs.; 11 x 14, 16 lbs.; 14 x 17, 23¾ lbs. *Size of Lens Board*—5 x 7, 3¼ x 3¼ in.; 6½ x 8½, 4¼ x 4¼ in.; 8 x 10, 5 x 5 in.; 11 x 14, 5¾ x 5¾ in.; 14 x 17, 7 x 7 in. *Carrying Case*—Long style canvas, with compartment for holders. Up to and including the 11 x 14 size, has both front and back focus; larger sizes are made with back focus only.

## PRICES

	5 x 7	6½ x 8½	8 x 10	11 x 14	14 x 17
Empire State with Case and Holder	\$21.00	\$22.00	\$25.00	\$36.00	\$60.00
Symmetrical Lens and D. V. Auto.					
Shutter (extra)	13.50	18.50	21.50		
Extra Carrying Case	2.00	2.25	2.50	3.25	5.00



## EMPIRE STATE No. 2



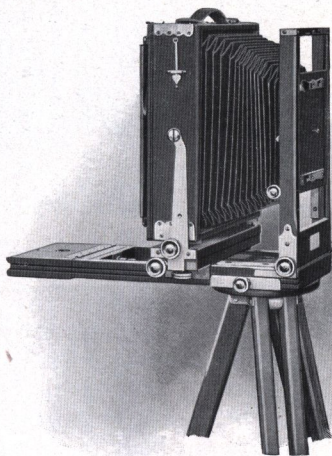
**H**AVING all the advantages of the original Empire State, this splendid instrument embodies additional features which make for even greater convenience and efficiency — features designed to meet every condition which may arise, so that the most particular photographer can wish for no convenience or adjustment which it does not possess.

A noticeable improvement is the method of locking the extensions, not by the old-fashioned, long threaded screw, but by means of a specially constructed device which locks by merely being pushed in and given a quarter turn. The front extension is attached to the bed by a piano hinge, while the back extension, which is detachable, in addition to the above locking device is further strengthened by two clamp catches. These hold it absolutely rigid and at the same time permit it to be slipped on or off instantly.

A sliding tripod block is provided, which clamps securely at any point in the front extension, making it possible to always support the box directly above the tripod when short focus lenses are used. And no matter what focus of lens is used, the bellows is automatically kept up in place by a spring arrangement attached to the inside bellows frame.

## EMPIRE STATE No. 2

This requires no attention by the operator, as it folds automatically when the instrument is closed. This instrument is provided with both front and back focus, permitting the camera to be racked up as close to the front as desired, thus accommodating lenses of the widest angle. The lens board is very large, will accommodate the heaviest lenses and is mounted in a strong, rigid standard. The back is reversible and is supplied with vertical and horizontal cut off boards, and vertical and horizontal swings are provided; both actuated by rack and pinion. Rising and falling front is also actuated by rack and pinion, and the nuts which control all these adjustments are large and located on the right hand side of the camera; while the corresponding binding nuts are located on the left hand side, avoiding confusion between binding and operating parts.



Tripod may be attached at any point

Empire State No. 2 is made of polished, kiln dried mahogany. Corners are dovetailed and reinforced by brass angle pieces.

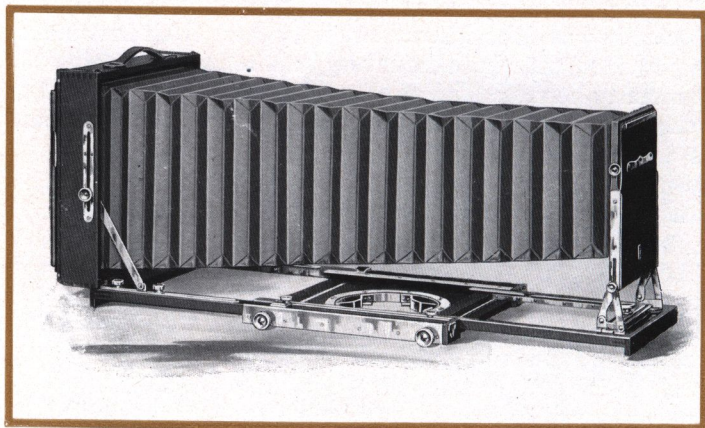
**Specifications:** *Bellows Draw*—5 x 7, 22 in.;  $6\frac{1}{2}$  x  $8\frac{1}{2}$ , 27 in.; 8 x 10, 30 in. *Weight*—5 x 7,  $7\frac{1}{4}$  lbs.;  $6\frac{1}{2}$  x  $8\frac{1}{2}$ ,  $8\frac{3}{4}$  lbs.; 8 x 10,  $11\frac{1}{4}$  lbs. *Size of Lens Board*—5 x 7,  $3\frac{3}{4}$  x  $3\frac{3}{4}$  in.;  $6\frac{1}{2}$  x  $8\frac{1}{2}$ ,  $4\frac{1}{4}$  x  $4\frac{1}{4}$  in.; 8 x 10, 5 x 5 in. *Carrying Case*—Canvas, long style, with compartment for holders.

### PRICES

	5 x 7	$6\frac{1}{2}$ x $8\frac{1}{2}$	8 x 10
Empire State No. 2 with Case and Holder	\$23.00	\$25.00	\$28.00
Symmetrical Lens and D. V. Auto. Shutter			
(extra) . . . . .	13.50	18.50	21.50
Extra Carrying Case . . . . .	2.00	2.25	2.50



# PREMO VIEW CAMERA



**T**HIS camera is made to combine a strikingly handsome appearance with the best possible equipment.

It focuses from both front and rear, so that the extra long bellows may be readily used for telephoto or other work, or the body of the instrument brought forward, permitting the use of lenses of the widest angle, without "cutting off."

It always balances on the tripod, has vertical and horizontal swing, and extreme rising front easily manipulated. Back is reversible; lens board removable and very large; standard support strong and rigid. The case is water proof with separate compartments for tripod, holders, extra lenses or other accessories. Price includes camera, tripod, plate holder and case.

**Specifications:** *Bellows Draw* —  $6\frac{1}{2} \times 8\frac{1}{2}$ , 27 in.;  $8 \times 10$ , 30 in.  
*Weight* —  $6\frac{1}{2} \times 8\frac{1}{2}$ , 8 lbs.;  $8 \times 10$ ,  $9\frac{1}{2}$  lbs. *Size of*  
*Lens Board* —  $6\frac{1}{2} \times 8\frac{1}{2}$ ,  $4 \times 4$  in.;  $8 \times 10$ ,  $4\frac{1}{2} \times 4\frac{1}{2}$  in. *Carrying Case*  
 — Trunk board with space for camera, holders, accessories and tripod.

## PRICES

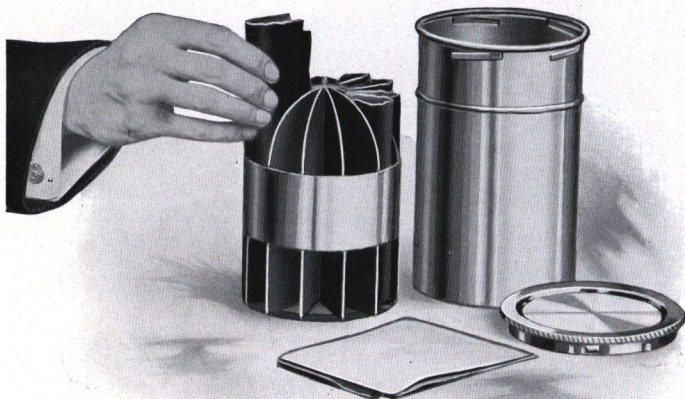
	$6\frac{1}{2} \times 8\frac{1}{2}$	$8 \times 10$
Premo View Camera with Case and Holder and Combination Tripod . . . . .	\$52.00	\$58.00
Symmetrical Lens and D. V. Auto. Shutter (extra) . . . . .	18.50	21.50
Extra Carrying Case . . . . .	4.00	5.00

# SPECIAL LENS AND SHUTTER EQUIPMENTS

STYLE OF CAMERA		Fitted with Zeiss Kodak Anastigmat, f.6.3 Lens				Fitted with B. & L. Zeiss Tessar Lens, Series IIB, f.6.3				Fitted with B. & L. Zeiss Protar Lens, Series VIIA				Fitted with Cooke Lens, Series IIIA, f.6.5			
		Compound Shutter		B. & L. Auto. Shutter		Compound Shutter		B. & L. Auto. Shutter		Compound Shutter		B. & L. Auto. Shutter		Compound Shutter		B. & L. Auto. Shutter	
		No.	Price	No.	Price	No.	Price	No.	Price	No.	Price	No.	Price	No.	Price	No.	Price
Filmplate Premo . .	3 1/4 x 4 1/4	2L.		2L.		4L.		4L.						3L.		3L.	
		0S. \$ 52.80		1S. \$ 44.50		0S. \$ 65.30		1S. \$ 57.00						0S. \$ 65.80		1S. \$ 57.50	
	3 x 5 1/4	3L.		3L.		5L.		5L.						4L.		4L.	
		1S. 62.30		1S. 51.50		1S. 71.30		1S. 60.50						1S. 74.80		1S. 64.00	
Pony Premo No. 4 .	4 x 5	3L.		3L.		5L.		5L.						4L.		4L.	
		1S. 62.30		1S. 51.50		1S. 71.30		1S. 60.50						1S. 74.80		1S. 64.00	
	5 x 7	5L.		5L.		5aL.		5aL.						6L.		6L.	
		2S. 85.05		2S. 74.50		2S. 95.55		2S. 85.00						2S. 98.05		2S. 87.50	
Pony Premo No. 6 .	4 x 5	3L.		3L.		5L.		5L.		3L.		3L.		4L.		4L.	
		1S. 59.80		1S. 49.00		1S. 68.80		1S. 58.00		1S. \$ 90.30		1S. \$ 79.50		1S. 72.30		1S. 61.50	
	5 x 7	5L.		5L.		5aL.		5aL.		8L.		8L.		6L.		6L.	
		2S. 82.05		2S. 71.50		2S. 92.55		2S. 82.00		2S. 115.55		2S. 105.00		2S. 95.05		2S. 84.50	
Pony Premo No. 7 .	4 x 5	3L.		3L.		5L.		5L.		3L.		3L.		4L.		4L.	
		1S. 72.80		1S. 62.00		1S. 81.80		1S. 71.00		1S. 103.30		1S. 92.50		1S. 85.30		1S. 74.50	
	5 x 7	5L.		5L.		5aL.		5aL.		8L.		8L.		6L.		6L.	
		2S. 97.05		2S. 86.50		2S. 107.55		2S. 97.00		2S. 130.55		2S. 120.00		2S. 110.05		2S. 99.50	
Premoette No. 1 . .	6 1/2 x 8 1/2	6L.		6L.		7L.		7L.		11L.		11L.		7L.		7L.	
		3S. 124.20		3S. 111.50		3S. 153.20		3S. 140.50		3S. 163.20		3S. 150.50		3S. 161.20		3S. 148.50	
	4 x 5	3L.		3L.		5L.		5L.		3L.		3L.		4L.		4L.	
		1S. 85.80		1S. 75.00		1S. 94.80		1S. 84.00		1S. 116.30		1S. 105.50		1S. 98.30		1S. 87.50	
Premoette No. 1A .	5 x 7	5L.		5L.		5aL.		5aL.		8L.		8L.		6L.		6L.	
		2S. 110.05		2S. 99.50		2S. 120.55		2S. 110.00		2S. 143.55		2S. 133.00		2S. 123.05		2S. 112.50	
	6 1/2 x 8 1/2	6L.		6L.		7L.		7L.		11L.		11L.		7L.		7L.	
		3S. 137.20		3S. 124.50		3S. 166.20		3S. 153.50		3S. 176.20		3S. 163.50		3S. 174.20		3S. 161.50	
Stereo Premo No. 4	2 1/4 x 3 1/4	1L.				3L.		3L.									
		0S. 40.25				0S. 51.25		4L. . . .									
Stereo Premo No. 6	2 1/2 x 4 1/4	2L.		2L.		4L.		4L.									
		0S. 41.30		1S. 35.50		0S. 53.80		1S. 48.00									
Stereo Premo No. 7	5 x 7																
Stereo Premo No. 7	5 x 7																



# PREMO FILM PACK TANK



**T**ANK Development is the greatest advance in photographic convenience of recent years. It is one of the most important discoveries which has ever been offered to the photographer. For tank development assures the veriest beginner that every pack of films placed in the tank, where the simple directions are implicitly followed, will come out developed as well or better than that pack could be developed in the tray by the most experienced photographer. It is simplicity itself. It requires no experience, no lengthy manipulation in a close dark-room. And we recommend the tank system to the most careful workers as being infinitely simpler than the older method and producing results superior to those which can be obtained by the most painstaking tray development.

The Premo Film Pack Tank consists of two pieces — a metal receiver or cage for the films, and a tank with cover for the developing fluid. The entire outfit is self-contained and can be easily carried.

The cage is divided into twelve compartments — in the 5 x 7 size, six — each accommodating one film. As the film

# PREMO FILM PACK TANK

is taken from the pack it is held between the thumb and fingers, slightly bent from top to bottom, and slipped into its respective compartment. When all the compartments are filled, the cage is placed in tank, which has been previously filled with developer, the top replaced and the films left to develop for a certain specified time. No further attention is necessary except to turn the tank, end for end, several times during the progress of development.

At the expiration of the full time, open the tank, take out the cage, remove films, place them in a tray of water for a moment, then transfer to the fixing bath. Development is completed. Rinse out cage and tank and set them aside.

The operation of removing films from the pack and loading the cage is done, of course, in a darkened room by the light of a ruby lamp. During the day any darkened closet will suffice, at night any dark room in which the shades are drawn will answer. To load the films in cage will take only two or three minutes, and as soon as the top is placed on tank it may be brought out into any light and left until development is completed.

If desired to develop less than a dozen films, one merely removes from his pack as many films as have been exposed, places them in a cage, and proceeds in the same manner as described above.

The cage of the No. 1 Tank is slightly different from that shown in the illustration, but the method of loading is the same and of course the results are just as dependable.

## PRICES

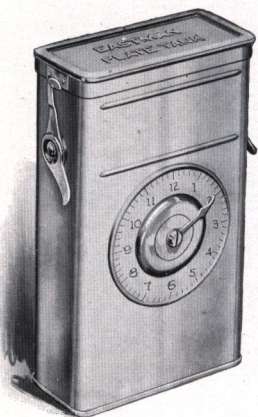
Premo Film Pack Tank No. 1, for 12 $1\frac{3}{4} \times 2\frac{3}{8}$ or $2\frac{1}{4} \times 3\frac{1}{4}$ films . . .	\$1.25
Do, No. 2, for 12 $2\frac{1}{2} \times 4\frac{1}{4}$ , $3\frac{1}{4} \times 4\frac{1}{4}$ , $3 \times 5\frac{1}{4}$ or $4 \times 5$ films . . .	3.50
Do, No. 3, for $6\frac{5}{8} \times 7$ films . . .	4.00
Premo Tank Developing Powders, in packages of 6, No. 1 . . .	.20
Premo Tank Developing Powders, in packages of 6, No. 2 . . .	.25
Premo Tank Developing Powders, in packages of 6, No. 3 . . .	.35
Acid Fixing Powder, per 1 pound package . . .	.25
Do, per $\frac{1}{2}$ pound package . . .	.15
Do, per $\frac{1}{4}$ pound package . . .	.10



# EASTMAN PLATE TANK

**I**N the Eastman Plate Tank, plates may be developed in the same manner and with the same assurance of excellent results as may films in the Premo Film Pack Tank. The theory of construction is precisely the same, with

of course such differences as are necessary because of the physical difference between films and plates.



It consists of a metal solution cup, a cage for holding twelve or less plates and a loading block for loading plates into the cage. In the  $3\frac{1}{4} \times 4\frac{1}{4}$ ,  $3\frac{1}{4} \times 5\frac{1}{2}$  and  $4 \times 5$  sizes, the cage of plates may be developed in a Premo Film Pack Tank, so that one using a Premo that takes films or plates and having a Premo Film Pack Tank needs only purchase the cage and loading

block of the plate tank for the tank development of his plates, an advantage in economy. It is thus apparent that the owner of a Premo plate camera can not only use films or plates in his camera with equal facility, but he can also avail himself of the advantages of tank development with either medium.

## PRICES

Eastman Plate Tank for $4 \times 5$ , $3\frac{1}{4} \times 5\frac{1}{2}$ or smaller plates, includes Solution Cup, Plate Cage, Loading Block and Adjustable Kit	\$ 3.50
Do, $5 \times 7$ , without Kit	4.50
Do, $8 \times 10$ , with Adjustable Kit	10.00
Adjustable Kit for $4 \times 5$ or $3\frac{1}{4} \times 5\frac{1}{2}$ Tank, to take smaller plates	.50
Kits for $5 \times 7$ Tank, to take $3\frac{1}{4} \times 5\frac{1}{2}$ , $4\frac{1}{4} \times 6\frac{1}{2}$ or $4\frac{3}{4} \times 6\frac{1}{2}$ plates, each	.75
Extra Adjustable Kit for $8 \times 10$ Plate Tank	1.00
Plate Cage and Loading Block for $4 \times 5$ and $3\frac{1}{4} \times 5\frac{1}{2}$ plates (can be used in a $4 \times 5$ Premo Film Pack Tank)	1.75
Eastman Plate Tank Powders, for $4 \times 5$ tank, per package, $\frac{1}{2}$ dozen	.20
Do, for $5 \times 7$ tank, per package, $\frac{1}{2}$ dozen	.35
Do, for $8 \times 10$ tank, per package, $\frac{1}{2}$ dozen	.50
Kodak Acid Fixing Powder, per 1-pound package	.25

# P R E M O L E N S E S

**A**LL Premo Cameras are regularly fitted with the best lenses obtainable, each in its particular grade. For special equipments see page 35.

We list below several lenses in barrel. Manufacturers' prices on any others will be supplied on demand.

## ZEISS KODAK ANASTIGMAT LENS *f*.6.3

No.	Size of Plate Covered with Full Aperture	Equivalent Focus	Price
1	2½ x 4¼	4½ inches	\$21.50
2	3¼ x 4¼	5 inches	22.00
3	4 x 5	6½ inches	27.00
5	5 x 7	8½ inches	40.00
6	6½ x 8½	10 inches	54.00

## B. & L.-ZEISS PROTAR LENS—SERIES VIIA

No.	Size of Plate Covered with Full Aperture	Focus of Front Lens	Focus of Back Lens	Combined Focus	Speed	Price
2	3¼ x 4¼	8¾ in.	7¾ in.	4½ in.	<i>f</i> : 7	\$ 52.50
3	4 x 5	11¾ in.	7¾ in.	5 in.	<i>f</i> : 7-7	57.50
5	4¼ x 6½	11¾ in.	8¾ in.	5½ in.	<i>f</i> : 7	61.50
8	5 x 7	13¾ in.	11¾ in.	7 in.	<i>f</i> : 7	73.50
9	5 x 8	16 in.	11¾ in.	7½ in.	<i>f</i> : 7-7	86.00
11	6½ x 8½	16 in.	13¾ in.	8½ in.	<i>f</i> : 7	93.00
12	6½ x 8½	18 in.	13¾ in.	9 in.	<i>f</i> : 7-7	114.50
17	8 x 10	23 in.	18 in.	11 in.	<i>f</i> : 7	169.00

## B. & L.-ZEISS PROTAR LENS—SERIES V, *f*: 18

The B. & L.-Zeiss Protar, Series V, is designed for extreme wide-angle work. This lens embraces a field of 110 degrees.

No.	Size	Equivalent Focus	Price
1	4½ x 6½	3¾ inches	\$23.00
2	5 x 7	4¾ inches	23.00
3	6½ x 8½	5¾ inches	29.00
4	8 x 10	7¾ inches	36.00

## SYMMETRICAL WIDE-ANGLE LENS

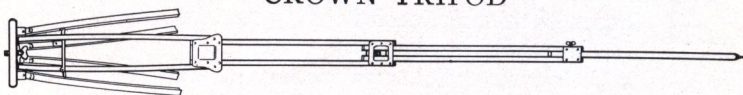
While not an anastigmat, this is an excellent wide-angle lens at a moderate price, having an angle of about 80 degrees.

No.	Size	Equivalent Focus	Price in Cells Only
1	4 x 5	3¼ inches	\$ 5.00
2	5 x 7	5 inches	7.50
3	6½ x 8½	6½ inches	12.00
4	8 x 10	8 inches	15.00



# P R E M O   T R I P O D S

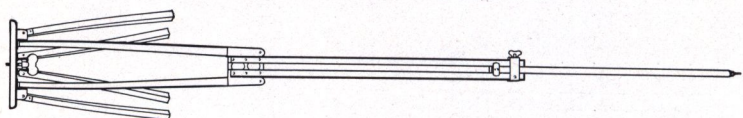
## CROWN TRIPOD



Made in four sections. Very rigid.

Style	Folded	Extended	Weight	Price
No. 1 . . .	16 $\frac{1}{4}$ inches . . .	4 $\frac{1}{8}$ feet . . .	36 ozs. . .	\$5.50
No. 2 . . .	17 $\frac{1}{4}$ inches . . .	4 $\frac{3}{8}$ feet . . .	65 ozs. . .	6.00
No. 3 . . .	20 inches . . .	5 $\frac{1}{2}$ feet . . .	70 ozs. . .	7.50

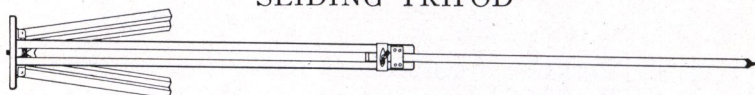
## COMBINATION TRIPOD



This tripod is made on the sliding and folding principle. The wood parts are of ash and the finish is of the very best.

Style	Size of Camera	Weight	Price
No. 2 $\frac{1}{2}$ . . .	6 $\frac{1}{2}$ x 8 $\frac{1}{2}$ and smaller . . .	3 lbs. . . . .	\$3.00
No. 3 . . .	8 x 10 and 10 x 12 . . .	4 lbs. . . . .	3.50
No. 4 . . .	11 x 14 and 14 x 17 . . .	5 lbs. . . . .	4.50
No. 5 . . .	17 x 20 and 20 x 24 . . .	8 lbs. . . . .	6.00

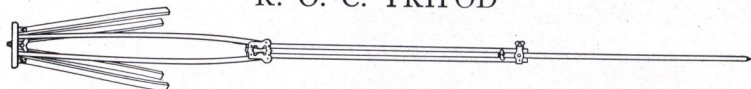
## SLIDING TRIPOD



A perfectly rigid tripod for the heaviest cameras.

Style	Size of Camera	Weight	Price
No. 1 . . .	5 x 7 and smaller . . . . .	2 lbs. . . . .	\$2.00
No. 2 . . .	5 x 8 and 6 $\frac{1}{2}$ x 8 $\frac{1}{2}$ . . . . .	2 lbs. 8 ozs. . . . .	2.50
No. 3 . . .	8 x 10 and 10 x 12 . . . . .	4 lbs. 8 ozs. . . . .	3.00
No. 4 . . .	11 x 14 and 14 x 17 . . . . .	6 lbs. 8 ozs. . . . .	4.00

## R. O. C. TRIPOD



The R. O. C. Tripod is of the combination type and is for use with any camera up to and including the 5 x 7 size.

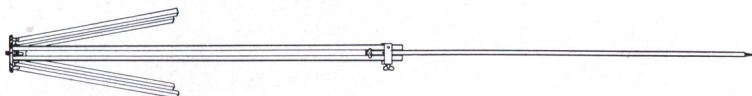
Weight, 32 ounces

Length, 22 to 57 inches

Price, \$1.70

# PREMO TRIPODS

## RAY SLIDING TRIPOD



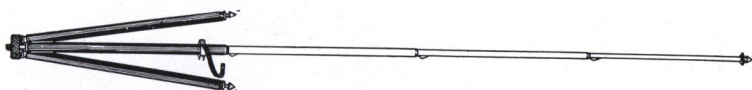
For cameras up to and including the 5 x 7 size this is a very satisfactory tripod at small expense.

Weight, 16 ounces

Length, 29 to 54 inches

Price, 80 cents

## THE KODAK METAL TRIPOD



Combining light weight and compactness with exceptional rigidity, this is an ideal tripod for cameras up to 5 x 7.

Has telescoping legs of brass tubing — lower ones nicked—the upper black enameled, and should a part become inoperative through wear or accident, any section may be removed for repairs. This is a unique feature among metal tripods.

When extended each section catches and holds firmly. To close, it is necessary to press in top catch only, the others then releasing automatically.

The Nos. 1 and 2 have revolving heads for attaching to camera. With this construction the camera may be swung, so as to take in the desired view without moving the tripod, a distinct advantage over other types of metal tripods.

The Nos. 1 and 2 also have straps for holding the legs in place when closed.

	Sections	Closed	Length Extended	Weight	Price
Kodak Metal Tripod No. 0 . . .	3	15½ in.	39½ in.	15 ozs.	\$1.60
Kodak Metal Tripod No. 1 . . .	4	15 in.	48½ in.	24½ ozs.	2.50
Kodak Metal Tripod No. 2 . . .	5	13½ in.	49½ in.	25 ozs.	3.25
Leather Carrying Case, either style . . .					1.50



# PREMO ACCESSORIES

## EASTMAN TRIPOD BRACE

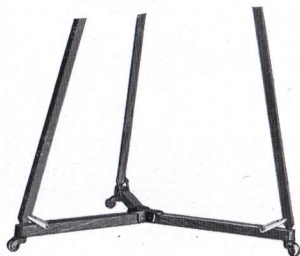


Out of doors, or indoors when the R. O. C. Tripod Truck is not used, this is an excellent attachment for holding tripod legs in position. Made entirely of metal, it can be instantly attached, and even when tripod is lifted the legs cannot collapse or change their position.

Eastman Tripod Brace . . . . . \$1.00

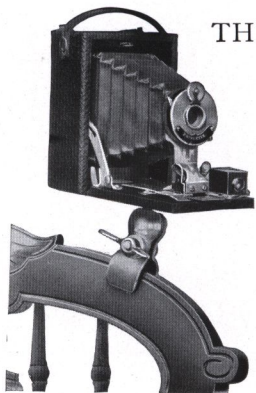
## R. O. C. TRIPOD TRUCK

For flash-light work, home portraiture, in fact, any branch of indoor photography, this truck is a very great convenience. It holds the tripod legs firmly in place and there is no danger of slipping nor of tripod spikes marring floors or rugs. Can be easily moved on its castors to any part of room, and folds up compactly when not in use.



No. 1, for average Tripods, \$1.00; No. 2, for very heavy Tripods, \$1.25

## THE UNIVERSAL CLAMP



The Universal Clamp is a small, convenient article which takes the place of a tripod, and which may be attached to any camera. It can be carried readily in the pocket, is very light, and may be attached to a chair, fence, the front board of an automobile, or other object which may be at hand. The clamp jaws are padded with felt.

Price . . . . . \$ .75

# PREMO ACCESSORIES

## THE PREMO PORTRAIT ATTACHMENT

This attachment simply fits on in front of the regular lens and in no way affects the operation of the camera, excepting to so change the focus as to permit working close to the subject, thereby giving good sized head and shoulder portraits. Not supplied for cameras larger than 5 x 7. Please order by number.



- No. 1—For all Pony Premo Cameras; 3 x 5 $\frac{1}{4}$ , and 4 x 5 Film Premo No. 1; all Filmpate Premos and 3 x 5 $\frac{1}{4}$  Pocket Premo C . . . \$ .50
- No. 2—For 3 $\frac{1}{4}$  x 4 $\frac{1}{4}$  Film Premo No. 1; double lens Premoette; 3 $\frac{1}{4}$  x 4 $\frac{1}{4}$  Pocket Premo C and Premo Juniors Nos. 3 and 4 . . . .50
- No. 3—For Premoettes Nos 1 and 1A, single lens . . . .50
- No. 4—For Premo Juniors Nos. 1 and 1A . . . .50
- No. 5—For Premoette Junior . . . .50

## PREMO RAY SCREEN

These screens are of great value in outdoor photography and for subjects having color.

Size	Outside Diam.	Diam of Lens	Price
No. 1 . . . .	1 $\frac{1}{2}$ in. . . .	1 $\frac{1}{4}$ in. . . .	\$ .40
No. 2 . . . .	2 in. . . .	1 $\frac{3}{4}$ in. . . .	.50
No. 2 $\frac{1}{2}$ . . . .	2 $\frac{9}{16}$ in. . . .	2 in. . . .	.60
No. 3 . . . .	3 $\frac{1}{4}$ in. . . .	2 $\frac{7}{8}$ in. . . .	.75

## PREMO OPTICAL OUTFIT

Consists of Portrait, Wide-Angle, Telephoto, Enlarging and Copying Lens, ray filter and duplicator. They slip over the regular lenses and are enclosed in a plush lined case, leather covered.



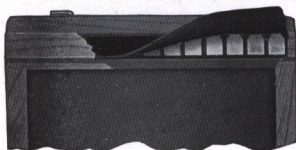
- Outfit complete 4 x 5, for lenses 1 $\frac{5}{16}$  in. diam. . . . . \$6.00
- Outfit complete 5 x 7, for lenses 1 $\frac{5}{16}$  in. diam. . . . . 6.00
- Enlarging and Copying Lens . 1.25
- Portrait Lens . . . . 1.25
- Ray Filter . . . . 1.00
- Duplicator . . . . .40



# PREMO ACCESSORIES

## PREMO PLATE HOLDER

Always the easiest of holders to load and unload, Premo holders are made absolutely light-tight by a fully patented light-lock. This device is shown in cut and is constructed of finely tempered, non-corrosive metal with independently operating spring fingers overlaid with a closely woven specially prepared fabric. The fingers bring this fabric into such close and immediate contact with the shutter cover that a slide can be inserted cornerwise without admitting light to the plate. Premo holders are fitted with specially lacquered pressboard slides that will not electrify, collect dust, crack or split.



$3\frac{1}{4} \times 4\frac{1}{4}$ . . . . .	\$1.00	$5 \times 7$ . . . . .	\$1.25
$3\frac{1}{4} \times 5\frac{1}{2}$ . . . . .	1.00	$6\frac{1}{2} \times 8\frac{1}{2}$ . . . . .	1.75
$4 \times 5$ . . . . .	1.00		

## UNIVERSAL PLATE HOLDER

These holders up to and including the  $8 \times 10$  size are of the same pattern as Premo holders excepting that they are heavier in construction and made to fit the Empire State and Premo View cameras. Sizes larger than  $8 \times 10$  are made with bottom flap. Slides are pressboard.

$5 \times 7$ . . . . .	\$1.00	$11 \times 14$ . . . . .	\$4.00
$6\frac{1}{2} \times 8\frac{1}{2}$ . . . . .	1.10	$14 \times 17$ . . . . .	5.00
$8 \times 10$ . . . . .	1.25		

## R. O. C. PLATE HOLDER

This holder is of good construction and is adapted for use in the R. O. C. View Camera only. It has pressboard slides.

$5 \times 7$ . . .	\$1.00	$6\frac{1}{2} \times 8\frac{1}{2}$ . . .	\$1.10	$8 \times 10$ . . .	\$1.25
--------------------	--------	--	--------	---------------------	--------

## HOLDER SLIDES

Size	Pressboard	Lacquered Pressboard	Hard Rubber	Size	Pressboard	Lacquered Pressboard	Hard Rubber
$3\frac{1}{4} \times 4\frac{1}{4}$ .	\$.10	\$.20	\$.20	$6\frac{1}{2} \times 8\frac{1}{2}$ .	\$.25	\$.45	\$.50
$3\frac{1}{4} \times 5\frac{1}{2}$ .	.15	.25	.25	$8 \times 10$ .	.35		.65
$4 \times 5$ .	.15	.25	.25	$11 \times 14$ .	.50		
$5 \times 7$ .	.20	.35	.35				

# PREMO ACCESSORIES

## HOLDER KITS

Size Outside	Size of Opening for Plate	Price
4 x 5	3 $\frac{1}{4}$ x 4, 3 $\frac{1}{4}$ x 4 $\frac{1}{4}$	\$ .20
5 x 7	3 $\frac{1}{4}$ x 4, 3 $\frac{1}{4}$ x 4 $\frac{1}{4}$ , 3 $\frac{1}{4}$ x 5 $\frac{1}{2}$ , 4 x 5, 4 $\frac{1}{4}$ x 6 $\frac{1}{2}$	.25
6 $\frac{1}{2}$ x 8 $\frac{1}{2}$	3 $\frac{1}{4}$ x 4 $\frac{1}{4}$ , 4 x 5, 3 $\frac{1}{4}$ x 5 $\frac{1}{2}$ , 4 $\frac{1}{4}$ x 6 $\frac{1}{2}$ , 4 $\frac{3}{4}$ x 6 $\frac{1}{2}$ , 5 x 7	.30
8 x 10	4 $\frac{1}{4}$ x 6 $\frac{1}{2}$ , 4 $\frac{3}{4}$ x 6 $\frac{1}{2}$ , 5 x 7, 6 $\frac{1}{2}$ x 8 $\frac{1}{2}$	.40
11 x 14	6 $\frac{1}{2}$ x 8 $\frac{1}{2}$ , 8 x 10, 10 x 12	.50
14 x 17	10 x 12, 11 x 14	.80

## KODAK CANDLE LAMP

This lamp is well made, collapsible, of special tested ruby fabric, bound in metal frames.

Kodak Candle Lamp . . . . .	\$ .25
Extra Candles for same, per dozen . . . . .	.30



## KODAK DARK ROOM LAMP



The Kodak Dark Room Lamp is oil burning and is fitted with both orange and ruby glass.

No. 2 Kodak Dark Room Lamp . . . . .	\$1.00
--------------------------------------	--------

## DEVELOPING TRAYS

Bulls-Eye, 3 $\frac{1}{2}$ x 4 $\frac{1}{4}$ . . . . .	\$ .12	Paper, 5 x 7 . . . . .	\$ .15
Bulls-Eye, 4 x 5 or 4 x 6 . . . . .	.15	Eastman Enameled, 4 $\frac{3}{8}$ x 5 $\frac{3}{8}$ . . . . .	.25
Bulls-Eye, 5 x 7 . . . . .	.25	Eastman Enameled, 4 x 6 . . . . .	.25
Paper, 4 x 5 . . . . .	.10	Eastman Enameled, 5 $\frac{1}{4}$ x 7 $\frac{3}{8}$ . . . . .	.50

## KODAK TRIMMING BOARD

A thoroughly reliable trimming board at a moderate price, constructed of hard wood with natural finish. The blade is of the best steel and a rule is fitted to the board.

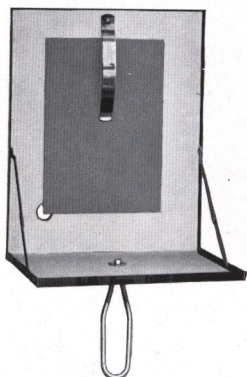


No. 1, 5 x 5 in. . . . .	\$ .40
No. 2, 7 x 7 in. . . . .	.60
Transparent Trimming Gauge for either (extra) . . . . .	\$ .20



# PREMO ACCESSORIES

## THE EASTMAN FLASH SHEET HOLDER



The safest and most convenient method of flash light photography is in the use of Eastman Flash Sheets with the Eastman Flash Sheet Holder.

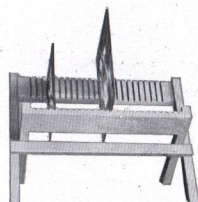
The sheet is held in place by a spring-finger, and the holder may be held always between the sheet and the operator, either with hand or on a tripod, a tripod socket being provided for this purpose. When all is ready the flash is set off by touching a match from the back to its lower corner, through a small aperture.

Eastman Flash Sheet Holder . . . . .	\$1.00
Eastman Flash Sheets, No. 1, per pkg. $\frac{1}{2}$ doz. sheets, 3 x 4 . . . . .	.25
Eastman Flash Sheets, No. 2, per pkg. $\frac{1}{2}$ doz. sheets, 4 x 5 . . . . .	.40
Eastman Flash Sheets, No. 3, per pkg. $\frac{1}{2}$ doz. sheets, 5 x 7 . . . . .	.60

## PREMO NEGATIVE RACK

This rack accommodates negatives of all sizes. It folds flat when not in use.

No. 1, for 12 negatives . . . . .	\$ .20
No. 2, for 24 negatives . . . . .	.25



## DEVELOPING AND PRINTING ON VELOX PAPER

Size	Developing and Printing Per Pack		Developing Only, Per Pack	Printing Only, Each Exposure	
	Mounted	Unmounted		Mounted	Unmounted
$1\frac{3}{4}$ x $2\frac{3}{8}$ , 12 exp. . . . .	\$ .95	\$ .89	\$ .40	\$ .06	\$ .05 $\frac{1}{2}$
$2\frac{1}{4}$ x $3\frac{1}{4}$ , 12 " . . . . .	1.40	1.28	.50	.08	.07
$2\frac{1}{2}$ x $4\frac{1}{4}$ , 12 " . . . . .	1.50	1.38	.70	.08	.07
$3\frac{1}{4}$ x $4\frac{1}{4}$ , 12 " . . . . .	1.50	1.38	.70	.08	.07
3 x $5\frac{1}{4}$ , 12 " . . . . .	1.80	1.68	1.00	.10	.09
4 x 5, 12 " . . . . .	1.80	1.68	1.00	.10	.09
5 x 7, 12 " . . . . .	2.40	2.10	1.20	.12 $\frac{1}{2}$	.10

NOTE.—Unmounted prints are furnished unless otherwise specified in order.

"Double Weight" prints will be billed at mounted rates.

No orders executed for less than 25 cents.

All prints are mounted with Kodak Dry Mounting Tissue, and, therefore, do not curl.

# PREMO ACCESSORIES

## GLASS DRY PLATES

Seed, Standard or Stanley.

Size	Price per Dozen	Size	Price per Dozen
3 $\frac{1}{4}$ x 4 $\frac{1}{4}$ . . . . .	\$ .45	5 x 7 . . . . .	\$1 10
3 $\frac{1}{4}$ x 5 $\frac{1}{2}$ . . . . .	.65	5 x 8 . . . . .	1.25
4 x 5 . . . . .	.65	6 $\frac{1}{2}$ x 8 $\frac{1}{2}$ . . . . .	1.65
4 $\frac{1}{4}$ x 6 $\frac{1}{2}$ . . . . .	.90	8 x 10 . . . . .	2.40

## VELOX PAPER

The very best developing paper for amateur use.

Size	SINGLE WEIGHT			DOUBLE WEIGHT		
	Doz.	$\frac{1}{2}$ Gross	Gross	Doz.	$\frac{1}{2}$ Gross	Gross
2 $\frac{1}{4}$ x 3 $\frac{1}{4}$ . . . . .	\$ .15	\$ .60	\$1.00	\$ .20	\$ .75	\$1 25
2 $\frac{1}{2}$ x 4 $\frac{1}{4}$ . . . . .	.15	.70	1.25	.20	.90	1 55
3 $\frac{1}{4}$ x 4 $\frac{1}{4}$ . . . . .	.15	.80	1.50	.20	1.00	1.90
3 $\frac{1}{4}$ x 5 $\frac{1}{2}$ . . . . .	.15	.80	1.50	.20	1.00	1.90
4 x 5 . . . . .	.25	1.10	2.00	.30	1.40	2 50
5 x 7 . . . . .	.35	2.00	3.50	.45	2.50	4 40
Velox Post Cards . . . . .				.20	1.10	2.00

## CARD MOUNTS

### BEVPLANE

Carbon Black and Scotch Gray			
For Prints	Size Outside	Per 50	Per 100
2 $\frac{1}{4}$ x 3 $\frac{1}{4}$ . . . . .	4 x 5	\$ .30	\$ .60
2 $\frac{1}{2}$ x 4 $\frac{1}{4}$ . . . . .	4 $\frac{1}{4}$ x 6	.40	.80
3 $\frac{1}{4}$ x 4 $\frac{1}{4}$ . . . . .	5 x 6	.45	.85
3 $\frac{1}{4}$ x 5 $\frac{1}{2}$ . . . . .	4 $\frac{3}{4}$ x 7	.45	.90
4 x 5 . . . . .	5 $\frac{1}{2}$ x 6 $\frac{1}{2}$	.45	.90
5 x 7 . . . . .	7 x 9	.85	1.70

### MARINE

London Brown and Ash Gray			
For Prints	Size Outside	Per 50	Per 100
2 $\frac{1}{4}$ x 3 $\frac{1}{4}$ . . . . .	4 $\frac{3}{8}$ x 5 $\frac{3}{8}$	\$ .50	\$ .95
2 $\frac{1}{2}$ x 4 $\frac{1}{4}$ . . . . .	4 $\frac{1}{2}$ x 6 $\frac{1}{4}$	.50	1.00
3 $\frac{1}{4}$ x 4 $\frac{1}{4}$ . . . . .	5 $\frac{1}{4}$ x 6 $\frac{1}{8}$	.50	1.00
3 $\frac{1}{4}$ x 5 $\frac{1}{2}$ . . . . .	5 $\frac{3}{8}$ x 8	.70	1.35
4 x 5 . . . . .	6 x 7	.65	1.25
5 x 7 . . . . .	8 x 10	1.05	2.10

## A. B. C. DEVELOPING AND PRINTING OUTFIT

For 4 x 5, 3 x 5  $\frac{1}{4}$ ,\* or smaller pictures.

1 Kodak Candle Lamp, 25c.; 1 4 x 5 Printing Frame, 25c.; 1 4 x 5 Glass for Frame, 5c.; 1 4-ounce Graduate, 15c.; 1 Stirring Rod, 5c.; 4 Developing Trays, 40c.; 5 Tubes Eastman's Special Developer, 25c.;  $\frac{1}{2}$  pound Kodak Acid Fixing Powder, 15c.; 1 package Bromide Potassium, 5c.; 2 dozen Velox Paper, 50c.; 2 ounces Nepera Solution, for developing Velox, 10c.; Instruction Book, 10c. These articles if purchased separately would cost \$2.30. Price, complete, neatly packed, \$1.50.

\*Specify when ordering this size.



# M I S C E L L A N E O U S

Bulbs and Tubes, No. 2 . . .	\$.25	Printing Frame, 5 x 7 . . .	\$.35
Bulbs and Tubes, No. 3 . . .	.35	Reversible Backs:	
Focus Cloth, Rubber . . .	.50	For View Cameras, 5 x 7 . . .	7.50
Photo Paste, 3 oz. tube . . .	.15	For View Cameras, 6½ x 8½ . . .	9.00
Photo Paste, 5 oz. tube . . .	.25	For View Cameras, 8 x 10 . . .	11.00
Thermometer Stirring Rod . . .	.60	For View Cameras, 11 x 14 . . .	14.00
R. O. C. Tumbler Graduates,		Screws for Tripod Head:	
moulded, 2 ounces . . .	.10	Nos. 1, 2 and 3 . . .	.25
Do, 4 ounces . . .	.15	Nos. 4 and 5 . . .	.40
Do, 8 ounces . . .	.20	Screws for Tripod Leg:	
Do, 16 ounces . . .	.30	Nos. 1, 2 and 3 . . .	.15
Print Roller, 2 x 6-inch rubber		Nos. 4 and 5 . . .	.25
roller, nicked frame . . .	.50	Milled Head Screws for Cam-	
Flexo Print Roller, 4-in. rubber		eras:	
roller, black enameled frame . . .	.15	½ inch and smaller . . .	.15
Ground Glass:		Larger than ½ inch . . .	.25
4 x 5 . . .	.15	Shoulder Straps, Black:	
5 x 7 . . .	.20	½ x 52-inch with Snaps and	
6½ x 8½ . . .	.25	Buckles . . .	.25
8 x 10 . . .	.30	5/8 x 52-inch with Snaps and	
Lens Boards:		Buckles . . .	.30
For Premos, up to 5 x 7 . . .	.35	1 x 66-inch, with Buckle . . .	.30
For Premos, larger . . .	.50	1 x 74-inch, with Buckle . . .	.35
For Stereo Cameras . . .	.50	Tan Straps for View Cases,	
For View Cameras, up to 8x10 . . .	.50	with Buckle. Specify style	
For View Cameras, larger . . .	.70	and size of camera when	
Premo View Finder . . .	1.50	ordering:	
Premo Spirit Level . . .	.40	34, 40 and 44 inches . . .	.25
Printing Frame, 3¼ x 4¼ . . .	.25	52, 60 and 66 inches . . .	.30
Printing Frame, 3¼ x 5½ . . .	.25	Tubing, per foot . . .	.06
Printing Frame, 4 x 5 . . .	.25		

## TERMS

Prices included in this catalogue are net, excepting to dealers.

When ordering, give shipping directions, whether by freight, express or otherwise. If not stated, we use our discretion.

All orders for shipment C. O. D. must be accompanied with sufficient remittance to cover transportation both ways.

Mail orders must be accompanied with remittance for full amount of purchase, including postage, or we will ship by express.

Under no circumstances are we responsible for loss of mail packages. We suggest for safety that all such packages be ordered registered.

All goods are carefully packed and we cannot be held responsible for any damage during transit.

Orders for special parts or for goods not listed in this catalogue will be filled on customer's responsibility only. Under no circumstances can we permit the return of such goods for credit.

All prices are F. O. B. at Rochester, N. Y.

ROCHESTER OPTICAL DIVISION,  
EASTMAN KODAK CO. ROCHESTER, N. Y.

