

GRAFLEX

A complex collage of black and white photographs. The central focus is a large, high-contrast portrait of a woman's face, looking directly at the viewer. Surrounding this central image are several smaller, tilted photographs: a horse-drawn carriage in the upper left, a person falling or jumping in the upper right, a close-up of a baby's face on the right, a man wearing a turban in the lower left, and a row of classical columns in the lower right. The overall composition is layered and dynamic, with various geometric shapes and overlapping images.

THE AMERICAN MADE CAMERA FOR MORE INTERESTING PICTURES

GRAFLEX

TAKES THE
OUT OF



GUESSWORK PICTURE MAKING

MANY outstanding and basic principles distinguish the construction and operation of GRAFLEX cameras. They go far toward the elimination of photographic guesswork. In addition, GRAFLEX precision construction gives you the assurance of life-time superlative service.

Outstanding among GRAFLEX features is direct full vision focusing . . . *through the lens that takes the picture*. In the GRAFLEX focusing hood you see the picture . . . clear, full sized, right side up . . . to the very instant of exposure.

Throughout the focusing and composing of the picture, your subject is portrayed on the ground glass with hair line sharpness, and with true light and tonal values.

Then there is the recognized GRAFLEX focal plane shutter, giving you the ultimate in light transmitting efficiency throughout a complete range of speeds from "time" or a slow "instantaneous" to lightning swiftness that stops the fastest action.

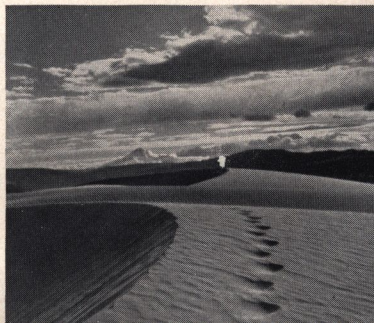
GRAFLEX photography offers you a whole new world of picture taking possibilities . . . GRAFLEX simplicity and versatility place these possibilities for better pictures in your hands.

Truly, the GRAFLEX is a different camera . . . *the camera for more interesting pictures.*

FOLMER GRAFLEX CORPORATION
ROCHESTER, N. Y.

"Fishy Tricks" Graflexed by C. R. Crandall
"Stormy Weather" Graflexed by Allen J. Villiers
"Expression" Graflexed by Torkel Korling
"Placid Thrills" Graflexed by Eugene H. Pierson
"Sand Trail" Graflexed by Ray Atkeson

"Flying High" Graflexed
by W. E. Burnell



With the GRAFLEX

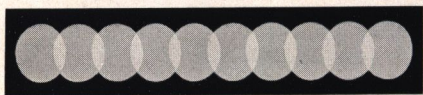


HERE is a visual story of GRAFLEX operation . . . an explanation of the GRAFLEX tradition that assures consistent and distinctive pictures by elimi-

nating photographic guesswork.

DIRECT FULL VISION FOCUSING—Observe the built-in ground glass at the base of the GRAFLEX focusing hood. Seeing the picture on this ground glass full size, right side up, and to the instant of exposure, enables the capture of fleeting expressions, of swift action, of ideal composition. Guesswork is eliminated.

SHUTTER EFFICIENCY — The strips, reproduced below, represent actual photographs made with identical lenses during exposures of 1/100 of a second.



This strip, made through a GRAFLEX Focal Plane Shutter, shows uniform illumination throughout the entire ten flashes.

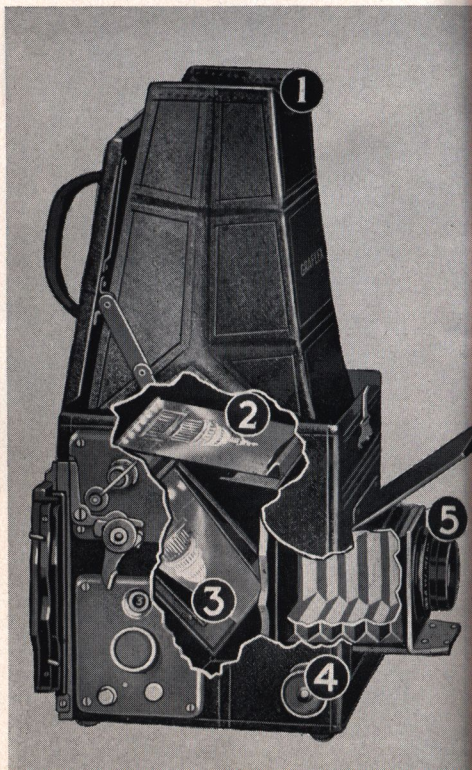


This strip indicates that the best between-the-lens shutter is "wide open" during the fifth and sixth flashes only.

GRAFLEX FOCAL PLANE SHUTTER

Speed and efficiency in the GRAFLEX focal plane shutter enable you to catch in a fleeting instant just what you see in the focusing hood, whether it be lightning action or pastoral tranquillity. A wide range of speeds combined with an ability to utilize a maximum amount of light, assures superior results. The photographic light strips on this page demonstrate the added light-transmitting ability of GRAFLEX focal plane shutter and its superior uniformity of illumination when compared with the best between-the-lens shutter.

LENSES — Only lenses of proven quality are supplied with or listed for precision-built Graflex cameras.



THE PICTURE IS IN YOUR HAND BEFORE YOU TAKE IT

**THE
FINISHED
PICTURE...SAME
SIZE AS YOU
SEE IT ON
THE GROUND
GLASS**



- 1 Look into the focusing hood. You see a reflected image of the subject, right side up, full picture size—to the instant of exposure.
- 2 When the pleasingly composed image is clear on the ground glass, the subject is in sharp focus.
- 3 The mirror reflects the image to the ground glass. When the exposure release is pressed, the mirror swings upward out of the way, instantly releasing the focal plane shutter—securing the desired picture.
- 4 Focus is under easy and positive control to the very instant of exposure.
- 5 Superior lens gathers ample light for the focal plane shutter which transmits one-third more light than does any other type of shutter.

**THE
SAME PICTURE
COMPOSED AND
FOCUSED...CLICK
AND YOU HAVE
IT**

*"The Capitol" Graflexed
by Allen Braunstein*

"JUST
A
HANDFUL"



National GRAFLEX SERIES II

"Proved in the Stratosphere"

National GRAFLEX TELEPHOTO LENS

THE accessory 140 mm. *f*.6.3 Telephoto Lens almost doubles the image size—brings new picture-making opportunities within the range of *National Graflex Series II*.

The naturalist and the outdoor man can get big images of wild life and distant objects; the sportsman will find it easy to "shoot" close-ups of fast action; the hobbyist and the pictorialist, too, will enjoy its perspective and quality.

This telephoto lens easily interchanges with the *National Graflex Series II* standard lens equipment—the B. & L. *f*.3.5 Tessar.



DETAILS

Picture Size $2\frac{1}{4} \times 2\frac{1}{2}$

Focal Length of Lens, 75 mm.

Shutter Speeds: Eight from 1/30 to 1/500; and "bulb."

The accessory Self-Timer provides *eleven* additional exposure intervals ranging from 1/2 sec. to 10 full secs.

National GRAFLEX ACCESSORIES

THE range of accessories now available for *National Graflex Series II* broaden the scope of the camera—pave the way for professionalized results in the hands of the amateur. Other *National Graflex* accessories will be provided from time to time. Keep in touch with your dealer.



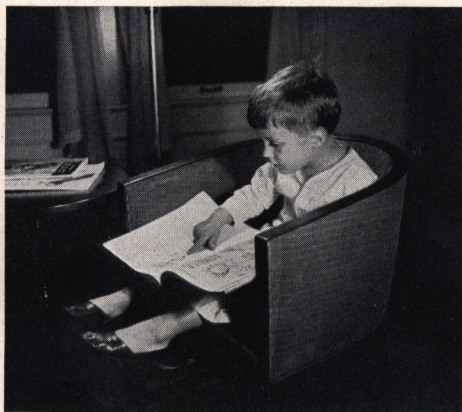
TELEPHOTO
LENS



DIRECT
VIEW
FINDER



"The Old Guard" National Graflexed by
H. C. A. von Schoenfeldt, A. R. P. S.



"Interest" National Graflexed
by H. M. Weis

"PERFECT performance and perfect negatives." Thus did three *National Graflex Series II* Cameras prove themselves in the Stratosphere—almost 14 miles UP!

To the record-breaking Stratosphere explorers, these cameras provided the necessary compactness in combination with precision - built features that have made *National Graflex Series II* America's finest miniature reflex.

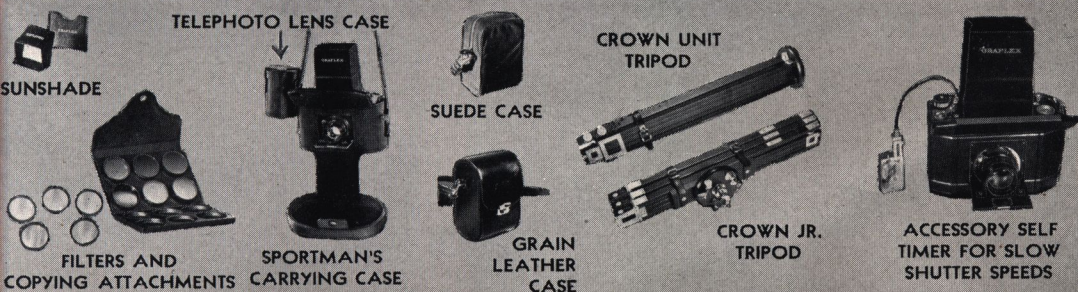
Discriminating camera enthusiasts, desirous of taking "more interesting pictures," will appreciate the versatility of this smart miniature GRAFLEX.

FEATURES—The spring-actuated top cover zips into place at the press of a button. An exclusive built-in Exposure Guide provides correct shutter speed and lens setting for all instantaneous exposures. An automatic Film Measuring Meter obtains 10 album-size pictures— $2\frac{1}{4} \times 1\frac{1}{2}$ —from popular No. 120 roll film. A

built-in Film Lock holds the film in a taut focal plane for each exposure. A built-in micro-focuser affords microscopic accuracy in focusing. A built-in Ruby Window Cover safeguards the use of panchromatic films. A 75 mm. *f.3.5* B. & L. Tessar Lens (standard equipment) is both the focusing lens and the taking lens. An accessory Telephoto Lens (140 mm. *f.6.3*) easily interchanges with the standard lens. The GRAFLEX Focal Plane Shutter affords 8 instantaneous speeds ranging from $1/30$ to $1/500$ sec. (with provision for quick change-over to "bulb" exposures). Two built-in cable release sockets permit the use of an accessory Self-Timer and Delayed Exposure Device which provides controlled speeds ranging from $\frac{1}{2}$ sec. to 10 seconds. And in the GRAFLEX Focusing Hood you see the picture subject . . . clear . . . sharp . . . to the instant of exposure.

See supplement for camera, lens and accessory prices.

5



SUNSHADE

TELEPHOTO LENS CASE

SUEDE CASE

CROWN UNIT
TRIPOD

FILTERS AND
COPYING ATTACHMENTS

SPORTMAN'S
CARRYING CASE

GRAIN
LEATHER
CASE

CROWN JR.
TRIPOD

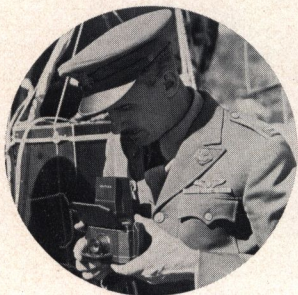
ACCESSORY SELF
TIMER FOR SLOW
SHUTTER SPEEDS

The Choice

OF THESE
INTERNATIONAL
PERSONALITIES

National GRAFLEX

SERIES II

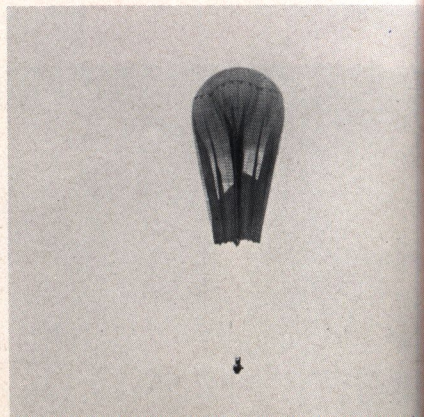


**CAPTAIN ALBERT
W. STEVENS, U. S. A.**

Commander of the National Geographic Society—U. S. Army Air Corps Stratosphere Flight for 1935.

As an owner and user, Captain Albert W. Stevens, U.S.A. has long recognized the *National* GRAFLEX Series II for the precision-built, dependable camera it is. Three of these cameras were carried on the Stratosphere Flight of 1935 and used during and at the ceiling of the flight—higher than any hand camera has ever before been used. The GRAFLEX equipment performed superbly, obtaining indisputable film records of the Stratosphere for science.

WORLD-WIDE, the *National* GRAFLEX Series II is used and acclaimed as the “finest of miniature reflex cameras.” It is a *real* GRAFLEX . . . wholly American-made. Its legion of owners, who judge it by the pictures it makes, know it for the precision-built, all-purpose camera it is.





"Monument" National Graflexed by
Franklin I. Jordan, F. R. P. S.



"Peppa" National Graflexed by
Franklin I. Jordan, F. R. P. S.



FRANKLIN I. JORDAN, F. R. P. S.

"THE old horse and buggy days were a lot of fun, but just because we once hitched old Dobbin to a sleigh is no reason that we should travel that way now. It takes a car or a plane to make connections these days. Cameras have naturally been improved like everything else to adapt them to modern requirements. Tops among the newer ones I find *National Graflex Series II*. It is certainly a delight to be able to use a miniature camera and still have it a *GRAFLEX* with all those conveniences and that same unflinching efficiency upon which I have so long been accustomed to rely.

Like its big brothers, it is a scientific instrument easily capable of producing first-class work in any branch of photography. In the *National Graflex Series II*, all the aids to successful picture-taking are comprehended in a handsome box so small and light that it can be carried anywhere without being conspicuously in evidence. It goes everywhere with me, and it brings home everything that I point it at."

MARION RUBINSTEIN, JOURNALIST AND AUTHOR

"WILL you excuse me if I brag a bit? You see, the *National Graflex* I bought was my first camera. Yet, the initial results—the pictures I took abroad—proved immediately salable upon my return. Five were accorded honors. Thirty-two of them illustrate my new book 'Adventuring in Palestine' published by Alfred A. Knopf. All my current newspaper and magazine articles and lectures are illustrated with *National Graflex* pictures. Yet, I'm not a photographer and know little about the 'game.' I attribute the results to the camera.

Naturally, I'm eternally grateful to Dr. Thorek for recommending the camera to me, and I'm glad to write this unsolicited testimonial—the first one ever—because I feel the *National Graflex Series II* merits it."



Portrait by Dr. Max Thorek, F. R. P. S.



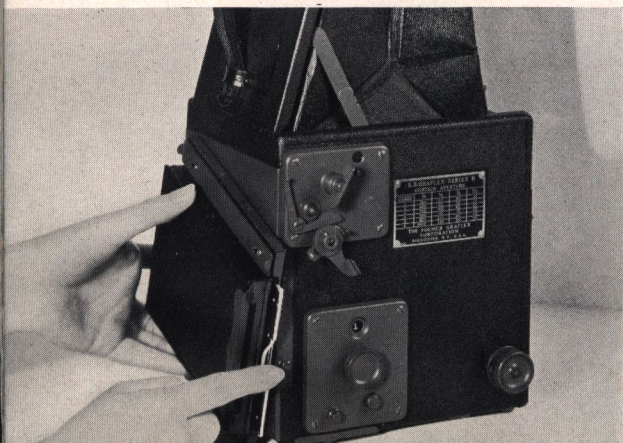
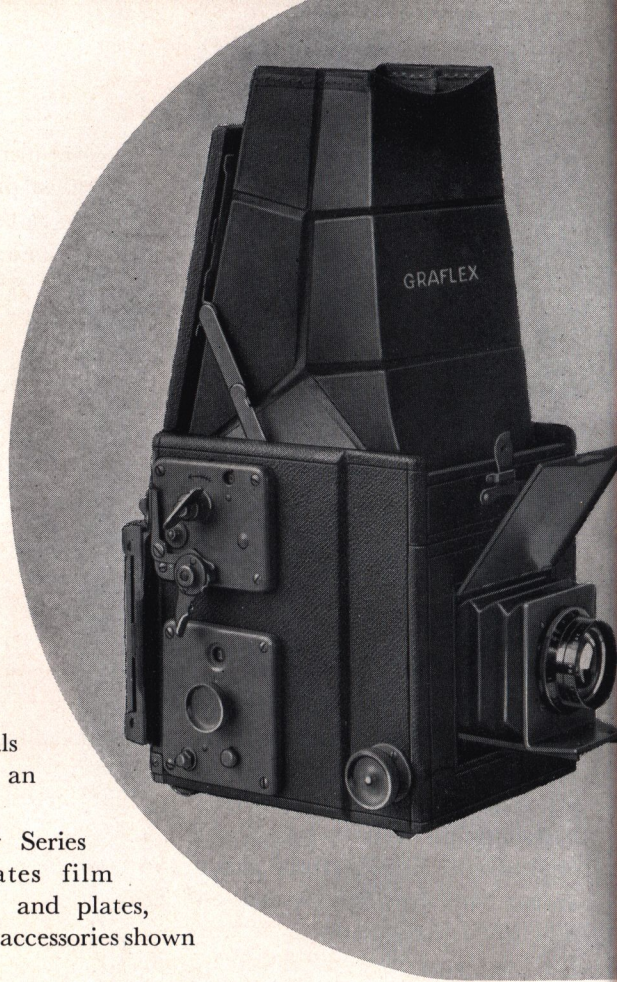
"Palestine Merchants" National
Graflexed by Marion Rubinstein

NATURALLY enough, the reliable Series B GRAFLEX has achieved favor in the hands of photographers everywhere—amateurs and professionals alike. It is essentially an all-around camera.

GRAFLEX FEATURES—Any Series B GRAFLEX accommodates film packs, cut film, roll film, and plates, used in the interchangeable accessories shown on page 23.

GRAFLEX full vision ground glass focusing and GRAFLEX focal plane shutter prepare the Series B GRAFLEX for superior results throughout its twenty-five shutter speeds ranging from 1/5 to 1/1000, and “time.”

REVOLVING BACK—The Revolving Back Series B has all the features of the Series B and more. The film or plate accessory is mounted on a light-tight



DETAILS, R. B. SERIES B

Picture Sizes	2¼x3¼	3¼x4¼	4x5
Bellows Capacity	7⅜"	8⅞"	10⅞"
Focal Length of Lens	5½"	6⅜"	7½"
Closest Working Distance	21"	23"	27"
Shutter Speeds:	Twenty-five from 1/5 to 1/1000, and “time.”		

See supplement for camera, lens and accessory prices.

SERIES B GRAFLEX

3¼ x 4¼

4 x 5

5 x 7

**WITH
REVOLVING
BACK**

2¼ x 3¼

3¼ x 4¼

4 x 5

turn-table permitting at the touch of a finger instant rotation of the film or plate medium for pictures of natural vertical proportions—as readily available as the usual horizontals.

A MATCHED INSTRUMENT—Each Series B is a matched instrument, fitted by GRAFLEX experts with a Kodak Anastigmat *f*.4.5 lens, ready to produce vivid prints and excellent negatives for enlargements. The lens is mounted in a sturdy metal front, and is interchangeable with telephoto lenses listed on page 26 and in the supplement.

DETAILS, SERIES B

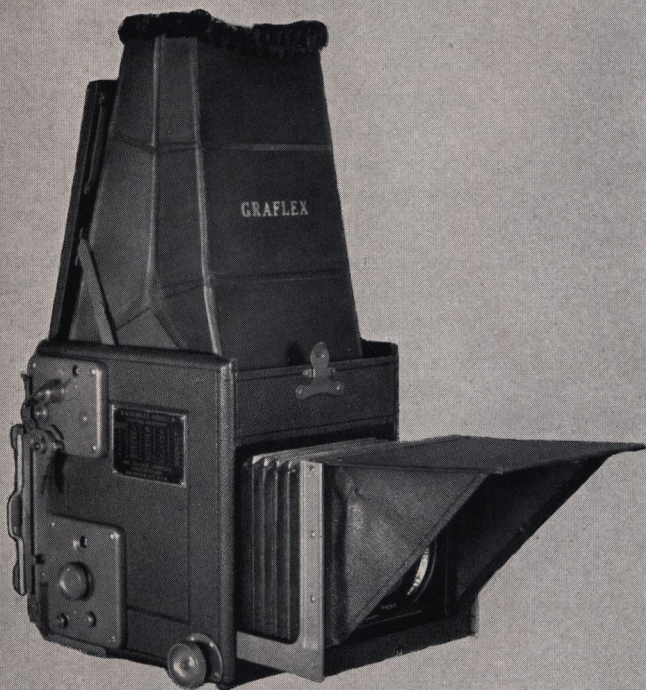
Picture Sizes	3¼x4¼	4x5	5x7
Bellows Capacity	7"	8 ⁵ / ₁₆ "	11"
Focal Length of Lens	5½"	6¾"	8½"
Closest Working Distance	23"	23½"	29"
Shutter Speeds: Twenty-five from 1/5 to 1/1000, and "time."			

See supplement for camera, lens and accessory prices.

9

"Spaniels" Graflexed by Torkel Korling





SERIES D GRAFLEX

REVOLVING BACK

**$3\frac{1}{4} \times 4\frac{1}{4}$
 4×5**

DETAILS

Picture Sizes	$3\frac{1}{4} \times 4\frac{1}{4}$	4×5
Bellows Capacity	$8\frac{1}{4}"$	12"
Lensboard	$3\frac{1}{4}"$ Sq.	$3\frac{3}{4}"$ Sq.
Minimum Focus of Lens	Accommodated	$5\frac{3}{4}"$ 7"
Shutter Speeds:	Twenty-five from $\frac{1}{5}$ to $\frac{1}{1000}$, and "time."	

*See supplement for camera,
lens and accessory prices.*

the Series D GRAFLEX, making it the choice of thousands who are now securing superior pictures. When difficult—almost impossible—photographic conditions are encountered, the Series D GRAFLEX demonstrates its versatile ability, meeting each with confidence and ease. Amateurs and professionals, scientists and explorers, find the Series D GRAFLEX the ideal camera for more interesting pictures.

INTERCHANGEABLE LENSBOARD—The Kodak Anastigmat lens is well

PHOTOGRAPHS of character are obtainable with

suited to the broad applications of the Series D GRAFLEX and is supplied unless otherwise specified.

The interchangeable lensboard with which this camera is equipped makes easy the use of a wide selection of lenses, thereby affording a range of utility not common to cameras with fixed lenses.

REVOLVING BACK—Both sizes of Series D are revolving back equipped, facilitating instantaneous placement of the film or plate medium for either horizontal or naturally vertical subjects.

OTHER FEATURES—An automatic and effective lens shade, built into the Series D, prevents the entrance of extraneous sky and sunlight, to assure finer pictures. Increased bellows length, too, enhances the versatility of Series D.

The Series D GRAFLEX accommodates film packs, cut film, roll film, and plates, used in the interchangeable accessories shown on page 23.

INCLUDING THE GRAFLEX FEATURES—And, of course, the GRAFLEX focusing hood with ground glass focusing, coupled with GRAFLEX focal plane shutter, assures a combination destined for better pictures. Twenty-five shutter speeds from 1/5 to 1/1000, in conjunction with "time," assure a range of exposure control to match every subject.



MARTIN JOHNSON

"FOR two decades GRAFLEX equipment — initially 5x7's, latterly 4x5's—have 'stood by us,' producing over 25,000 fine negatives. Naturally, in re-outfitting for Borneo, we've 'gone GRAFLEX'—buying compact 3 1/4 x 4 1/4 Speed Graphic and Series D GRAFLEX cameras. Thus we've guaranteed ourselves another living record of new peoples and countries."

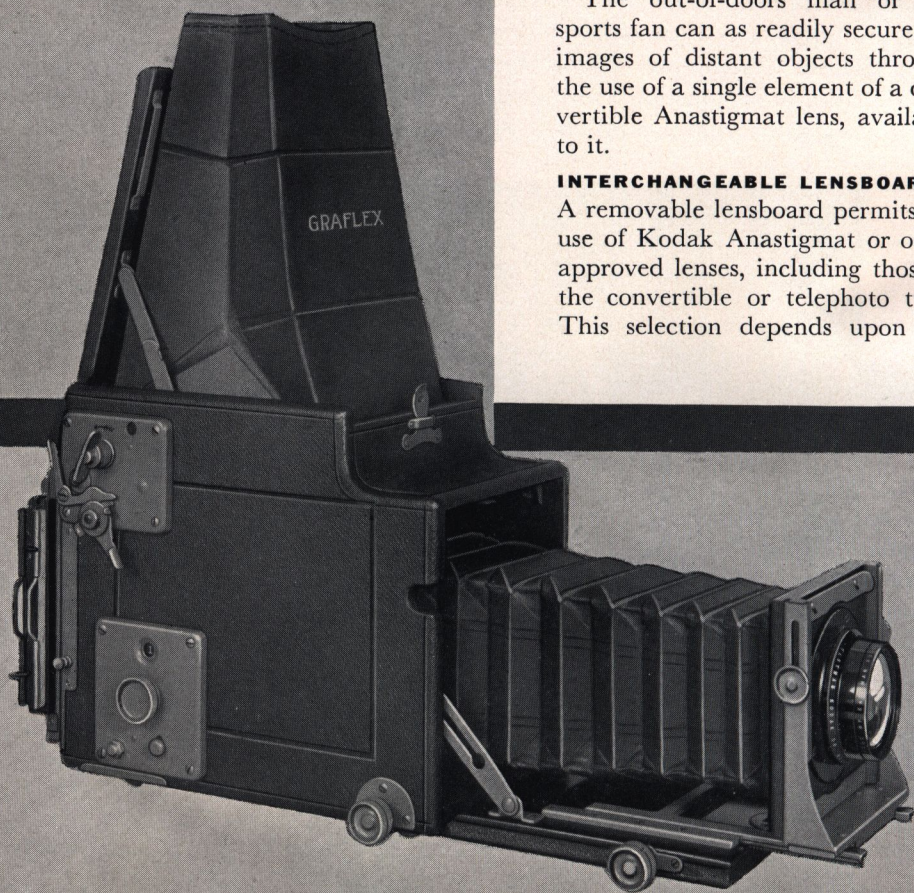


"Savage"
Graflexed by
Martin Johnson

AUTO GRAFLEX

REVOLVING BACK

3¼ x 4¼
4 x 5



TRUE-SIZED closeups of a flower, jewel, specimen or design, in actual dimensions, are often essential. Big images of distant objects—wild life and sports events which usually must be viewed from afar—are desirable. Both extremes lie within the range of the versatile Revolving Back Auto GRAFLEX.

GENEROUS BELLOWS DRAW—For the naturalist, scientist, or student, the generous bellows draw of the Auto GRAFLEX permits true-sized close-ups. Full-sized pictures in extremely sharp detail thus secured of a specimen or subject, provide a complete visual record, minimize notebook data.

The out-of-doors man or the sports fan can as readily secure big images of distant objects through the use of a single element of a convertible Anastigmat lens, available to it.

INTERCHANGEABLE LENSBOARD—A removable lensboard permits the use of Kodak Anastigmat or other approved lenses, including those of the convertible or telephoto type. This selection depends upon the

nature of the broad requirements to which this versatile camera may be applied.

REVOLVING BACK AND RISING FRONT

In such a camera as the Auto GRAFLEX the revolving back feature is particularly desirable and greatly facilitates work with it. In addition the Auto GRAFLEX provides a rising front to control foreground and a special focusing panel at the rear where the image can be measured or examined under magnification.

OTHER FEATURES—All this unusual equipment and versatility are available in the Auto GRAFLEX, along with the recognized GRAFLEX features of direct full vision focusing and GRAFLEX focal plane shutter.

Auto GRAFLEX, too, accommodates film packs, cut film, roll film and plates, used in the interchangeable accessories shown on page 23.

Justly, the Revolving Back Auto GRAFLEX has earned the respect and admiration not only of amateurs and professionals alike, but of scientists and nature lovers and those with unusual and exacting photographic requirements.



"Cactus in Bloom" Graflexed by Karl Obert

DETAILS

Picture Sizes	3¼x4¼	4x5
Bellows Capacity	15½"	18½"
Lensboard	3¼" Sq.	3¾" Sq.
Minimum Focus of Lens		
Accommodated	7½"	9"
Shutter Speeds:	Twenty-five from 1/5 to 1/1000, and "time."	

See supplement for camera, lens and accessory prices.



KARL OBERT

"FOR ten years I have used cameras intensively and have participated in Salons extensively.

During these years I have used many cameras—but have always turned to the GRAFLEX as the instrument best suited for outstanding picture results.

With it I have made the Salon entries which have earned some small measure of recognition.

Naturally, I am highly enthusiastic about GRAFLEX cameras, not only because they are a short cut to Salon winners, but because they make my casual picture shooting of day-by-day record subjects an ever changing experience filled with pleasure and satisfaction."

PREFERRED BY AMATEURS DEMANDED BY PROFESSIONALS



REV. BERNARD R. HUBBARD, S. J.

"ONE of the most spectacular pictures I ever took, which is of Shisbaldin Volcano in eruption, happened to be *in* the GRAFLEX during its memorable A.W.O.L. descent of the 60° mountainside.

A startled yell suddenly broke on my ears as I was lying flat on my chest and digging toes and fingers into the gritty snow to inch my way up the sloping cone. A square, black object was bounding with the speed of an aeroplane, taking leaps of a hundred feet at a time. It was my camera . . . It jumped glacier crevasses, sheared off ice pinnacles, and hurtled like a thing possessed until it debouched on a level spot at the base of the cone and came to a stop. Binoculars were necessary to see it, so far had it gone . . . Morton retrieved the runaway camera, strange to say practically uninjured.

Without the slightest retouching, this remarkable negative of Shisbaldin, [reproduced at the right] shows the bust of George Washington forming from a puff of smoke and ashes ejected by the volcano. Only the sturdy construction of a Graflex could have preserved such a negative."

DORIS DAY



"I've depended on my GRAFLEX cameras for every type of picture — from delicate close-ups of new-born babies to wide scapes of land and sea. If I'm sentimental about these cameras, it's for good reason — they have never let me down.



Photograph by
Hazel Tackmeyer

Where figures or other animate subjects are to be photographed, I'd feel lost — have moose fever probably — without my GRAFLEX. That's because I have such proven confidence in its unbeatable and efficient combination of lens, mirror, and shutter all pulling together toward a successful picture."



"Shisbaldin Volcano paints a portrait of Washington" Graflexed by Reverend Bernard R. Hubbard, S. J.



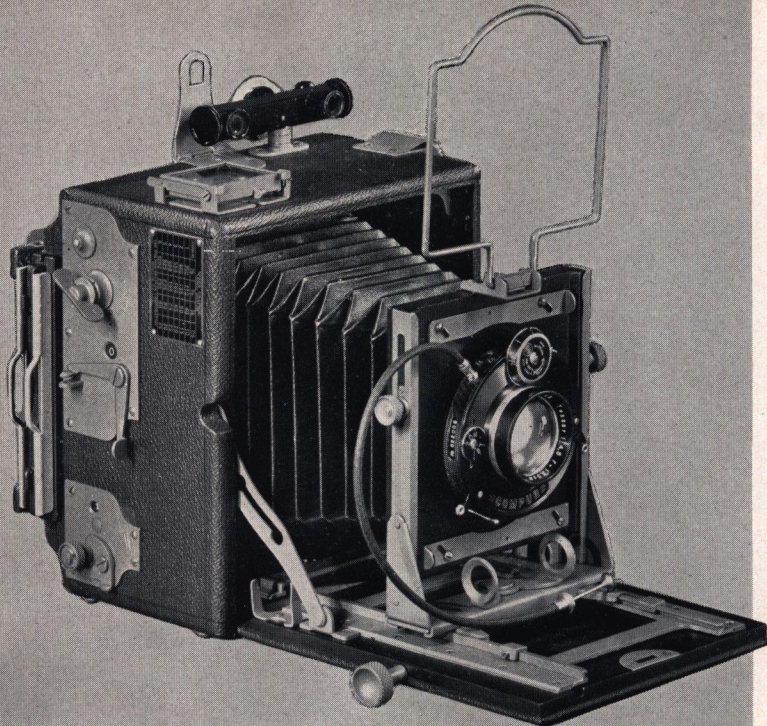
"His First Licking" Graflexed by H. Armstrong Roberts

H. ARMSTRONG ROBERTS

"GRAFLEX will 'take it'—not only the *unusual picture*, but *hard knocks* as well. My latest trip—14,000 miles by motor, horse, pack train and canoe—proved it, for I brought back 3000 of the best negatives I have ever made, all exposed in a *single* GRAFLEX, save a few wide angle shots made with a Graphic.

I have now accumulated more than 100,000 GRAFLEX negatives and am convinced more than ever that the GRAFLEX is the most flexible camera made. Certain I am that no other camera could have achieved the results which I have obtained with the GRAFLEX."





FEATURES

INTERCHANGEABLE LENSES—A large removable lensboard and roomy bellows permits the use of speed lenses in a variety of makes.

BROAD EXPOSURE RANGE—The Focal Plane Shutter in combination with a between-the-lens shutter affords controlled exposures ranging from one sec. to 1/1000 sec.

GROUND GLASS FOCUSING—Graflex users, accustomed to Ground Glass Focusing, will enjoy using the rear ground glass screen with the Speed Graphic.

A CHOICE OF "BACKS"—The Speed Graphic is available with either Graflex or Graphic Back.

WIDE - ANGLE BED—The auxiliary wide-angle bed—an accessory—permits the efficient use of extra wide-angle lenses.

PHOTO-FLASH SYNCHRONIZING—Using a between-the-lens shutter and synchronizer, action or still pictures may be made at night.

SPEED GRAPHIC

3¼ x 4¼

4 x 5

5 x 7

It is probable that more people have looked at pictures taken with a Speed Graphic than with any other camera. The fact is that the most widely used camera in the hands of newspaper photographers is the Speed Graphic.

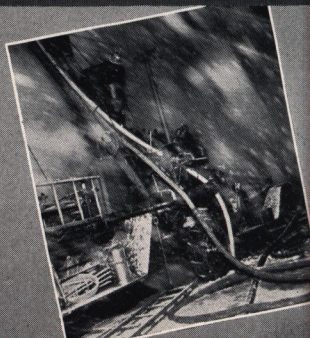
No other camera offers the recognized GRAFLEX focal plane shutter in combination with: long bellows draw that provides one-to-one copying; eye-level view finder;

folding wire frame finder and folding peep-sight; rising and falling front; removable lensboard; interchangeable wide-angle, telephoto and speed lenses; focusing panel—either built-on or interchangeable with film and plate attachments; Kodak Anastigmat and other lenses either in barrel or mounted in between - the - lens shutters to afford photoflash synchronization; optional built-on range finder.

DETAILS

Picture Size	3¼x4¼	4x5	5x7
Bellows Capacity	12"	13½"	16"
Lensboard	3¼" Sq.	4" Sq.	4" Sq.
Shutter Speeds:	Twenty-four from 1/10 to 1/1000, and "time."		

See supplement for camera, lens and accessory prices.



"The Railroad" Graflexed
by Alex Silverberg

The light and compact Speed Graphic, with its tremendous capacity for photographing difficult subjects has recommended itself to the news photographer as a camera of positive accomplishment, and to the amateur as a camera of unlimited possibilities. It is but natural that advanced camera users have turned to this versatile, dependable camera—to augment their present equipment.

THE 3¼x4¼ SPEED GRAPHIC—In this size, the Speed Graphic widely appeals to advanced camera users. Accepting speed lenses to *f*.2.9 in barrel or *f*.3.5 in shutter, its range of usefulness is almost unlimited.

When supplied with GRAPHIC BACK, a spring-actuated ground glass focusing screen is built on as part of the camera. Regular GRAFLEX film and plate holders and the GRAFLEX film pack adapter are used with it.

When supplied with GRAFLEX BACK, the accessory 3¼x4¼ GRAFLEX Focusing Panel

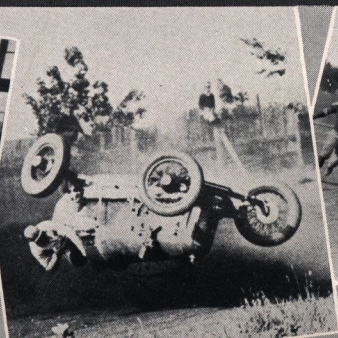
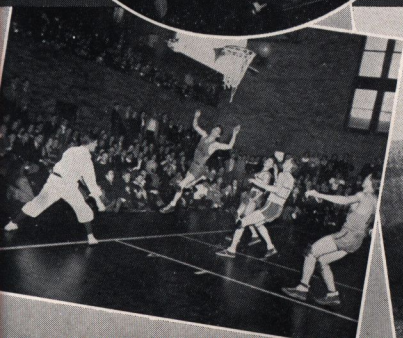
is interchangeable with all 3¼x4¼ GRAFLEX film or plate attachments including the magazines and lantern slide plate holders.

THE 4x5 SPEED GRAPHIC—Recognized as the standard press camera, the 4x5 Speed Graphic serves many other interests. Advanced amateurs who prefer the 4 x 5 picture size have long used it. Commercial photographers, illustrators, free-lance camera men, publishers and others who normally require 8" x 10" prints for reproduction purposes find the 4x5 size a great convenience since only a two-times enlargement of the entire negative produces the desired print.

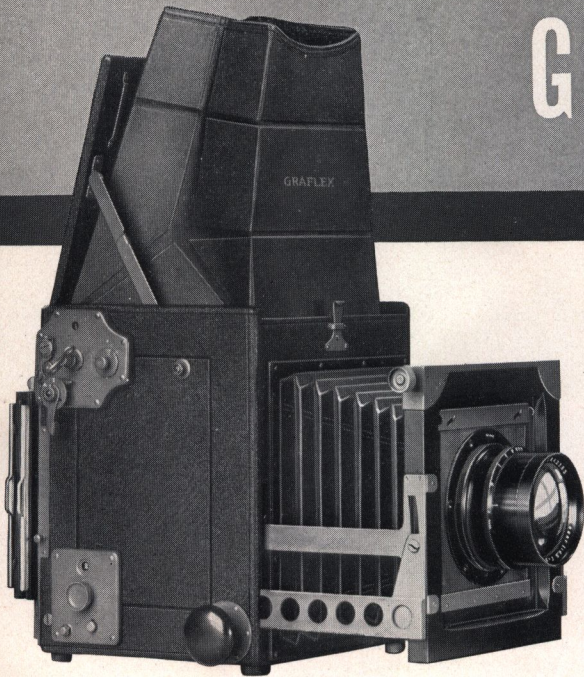
When supplied with GRAPHIC BACK, a spring-actuated ground glass focusing screen is built on as part of the camera. GRAPHIC cut film or plate holders and the Kodak film pack adapter are used with it.

When supplied with GRAFLEX BACK, standard 4x5 GRAFLEX film and plate attachments interchange with the GRAFLEX Focusing Panel available as an accessory.

THE 5x7 SPEED GRAPHIC—For all-around commercial, industrial, and color photography where larger negatives may be desired.



HOME PORTRAIT GRAFLEX



IN this camera are combined all the capabilities of GRAFLEX direct full vision focusing, focal plane shutter, especially adapted to interior photography, and other special features to provide an outstanding camera for home portrait work.

LENS VERSATILITY — The Home Portrait GRAFLEX is equipped with a lens-front that raises, lowers or swings, and with sensitive finger-tip focusing control. It readily accepts the Kodak Anastigmat and

other *f*.4.5 lenses as well as *f*.3.5 and telephoto lenses of approved selection.

PORTABILITY — With the Home Portrait GRAFLEX it is possible to photograph indoors and under difficult lighting conditions. The operator can move freely from point to point, watching his subject in the hood, keeping his subject in perfect focus, and always ready in an instant to capture forever that elusive perfect moment of composition or expression.

VERSATILITY — The owner of the Home Portrait GRAFLEX is enabled to grasp countless fruitful opportunities for making home portraits that live, far removed from the stony stillness of the ordinary posed picture. Under many interior conditions it is possible, with the lens well open and with Super Sensitive Film, to use a slow instantaneous exposure—often of great importance when the subject is a lively youngster, perhaps with an active pet.

LARGE, EXCELLENT PORTRAITS — The large film or plate area of this camera, 5x7 inches, permits securing big images without approaching the subject too closely. And, a 12 inch focal length lens lends good perspective, all adding to the possibilities of the Home Portrait GRAFLEX. While other special work also falls within its field, it is primarily a home portrait camera and in such work its adaptability and versatility place it first and foremost.

DETAILS

Picture Size	5x7
Minimum Focus of Lens	
Accommodated	10"
Bellows Capacity	13¾"
Lensboard	5" Sq.
Shutter Speeds: Twenty-four from	
1 second to 1/500, and "time."	

*See supplement for camera,
lens and accessory prices.*

"Warren"
Graflexed by
Fred P. Peel,
F. R. P. S.



FRED P. PEEL, F. R. P. S.

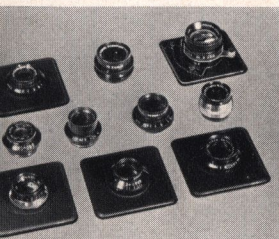
"There is but one camera that meets all my requirements—namely, the Graflex. Therefore, either in the home or in the studio, I never make a portrait sitting with any other camera."

GRAFLEX

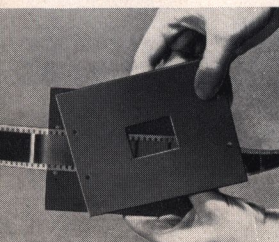
ENLARG-OR-PRINTER

INTERCHANGEABLE LENSBOARD

—Use your own lens if of suitable focal length . . . or choose your favorite from the group of listed accessory lenses.



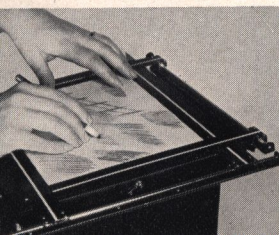
STRIP OR CUT FILMS—Strip film holders simplify enlarging from 35 mm. negatives in strips. (A book-type negative holder handles cut-up films.)



GROUND GLASS FOCUSING—Check the focus with a magnifier for wire-sharp enlargements . . . an exclusive ENLARG-OR-PRINTER feature.



RETOUCHING DESK—With top tilted, platen glass serves as desk. "Dual-Intensity" controlled lighting affords desired transparency to subject.



FOR versatility, compactness and completeness, the GRAFLEX ENLARG-OR-PRINTER is second to none. It is an enlarger, a contact printer and a retouching desk all in one—"almost a complete darkroom in itself."

The efficiency of the ENLARG-OR-PRINTER as an all-around darkroom unit is enhanced by distinctive advantages which it alone can offer:

Because the negative, lens, and printing surface are fully self contained, *sharp enlargements* are obtainable regardless of building vibration;

Since the image is projected upward to a removable focusing screen, *critical focusing* may be checked with a magnifier when desired;

Complete portability affords convenient use of the ENLARG-OR-PRINTER wherever electric current is available.

Making enlarging as simple as contact printing, and providing distinctive advantages in combination with unparalleled versatility, the ENLARG-OR-PRINTER represents a long stride forward in darkroom apparatus.

FEATURES

AS AN ENLARGER—It accepts all negatives—individually cut or in strips—from 35 mm. to full $2\frac{1}{4} \times 3\frac{1}{4}$ " (or that section of negatives as big as 4×5 "). The standard platen affords enlarged images as big as $8 \times 9\frac{1}{4}$ ", dependent on the size of negative and focal length of lens used (2" lenses enlarge seven diameters; 3" lenses, four diameters). The accessory Extension Top affords enlarged images as big as 11×14 ", dependent only on the size of negative and focal length of lens used. When the ENLARG-OR-PRINTER is used horizontally in combination with a copy board or wall easel, enlargements limited in size only by the quality of the negative may be made.

AS A CONTACT PRINTER—The standard platen will contact print all negatives up to 8×10 ". The accessory Extension Top will contact print all negatives up to 11×14 ". A ruby lamp aids in convenient placement of paper on negative.

AS A RETOUCHING DESK—The top platen glass serves as an ideal retouching desk. Because the ENLARG-OR-PRINTER is also an Enlarger and Contact Printer, it is the only unit that permits starting from a small negative and carrying the entire paper negative process through the retouching stages to finished contact exhibit prints.

"ALMOST A COMPLETE DARKROOM IN ITSELF"



VERSATILE IN USE—Enlargements, contact prints, and retouching all on the convenient tilting top.

THE PLATEN TOP serves as a pressure pad holding the sensitized paper flat, at the same time operating an automatic switch which lights the projection lamp. The top is easily removable from the projection plane when large prints with wide borders are desired.

ILLUMINATION—Scientifically diffused light from a No. 1 Photoflood lamp supplies uniform illumination to the top platen. Patented construction of the lamphouse provides ventilation and heat radiation, safeguarding the negative.

DUAL-INTENSITY LIGHTING—A built-in resistor provides two light intensities from



SALON ENLARGEMENTS—The accessory extension top provides 11x14 enlargements. (With a wall easel, giant enlargements are readily produced.)

the single photoflood lamp, governed selectively by individual switches.

COUNTERBALANCED, the upper section telescopes over the lower, responding to slight pressure for varying the degree of enlargement.

ADJUSTABLE SCALED MASKING BLADES aid in determining composition, afford uniform white print borders; and serve to hold the negative flat during contact printing. They are readily detachable.

THE DODGING DOOR provides ready access for conventional dodging; and for diaphragming or interchanging the lenses.

THE TILTING TOP permits either correction of negative distortion or deliberate creation of distortion.

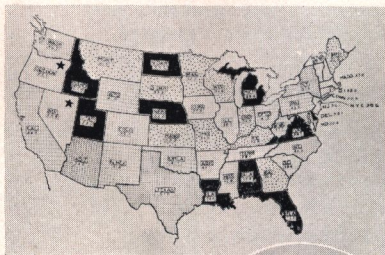
DETAILS

Overall dimensions	11½" x 13¼" x 26⅞"
Weight, complete	22¼ lbs.
Standard Lensboard	2½" Sq.
Electric current used	110-120 volts;
	or 220 volts with suitable lamps

See supplement for listings of the **Graflex ENLARG-OR-PRINTER** and its accessory equipment.



National Graflex in position for copying maps, charts, diagrams, etc.



ABOVE: The map reproduced for convenient filing or record.



RIGHT: Photomicrograph of Male Dog Flea—27 times magnification.

microscope can be used with it for the photographing of minute organisms, perishable and valuable specimens, or ever changing laboratory experiments.

Its portability, in combination with its ability to accommodate all cameras weighing six pounds or less that have a provision for ground glass focusing, makes the GRAFLEX Copygraph a practical, flexible outfit.

GRAFLEX COPYGRAPH

THE COMPLETE PORTABLE COPYING OUTFIT

THE GRAFLEX Copygraph includes a supporting column for holding the camera, flexible lighting system, and easel base for the subject matter. The unit is portable and easily dismantled. The easel base which serves as a small carrying case will additionally accommodate the *National* GRAFLEX or other miniature camera used with it.

COPYWORK. The Copygraph, with a suitable camera attached, is especially adapted for the making of permanent photographic copies. Magazine and newspaper articles, manuscripts, stamp and token collections, legal evidence, drawings or still life objects are within its scope. When used in combination with a *National* GRAFLEX, the negatives are ideal in size—especially appreciated when large records, x-ray films, etc. are to be reproduced for file or lantern slide use. Ratio of reduction may be further decreased where copying attachments for the camera lens are available. (See *National* GRAFLEX accessories.)

PHOTOMICROGRAPHY. The Copygraph with its flexible lighting system is ideally suited for Photomicrography. Any standard

DETAILS

Dimensions of Carrying Case	
Closed	17"x11"x6"
Dimensions of Base	17"x22"
Separable Upright Column—Height	30"
Diameter	2"
Additional Center Section of Column—Height	15½"
Maximum Weight of Camera Supported	6 lbs.
Weight of Copygraph Outfit complete, including the <i>National</i> GRAFLEX Camera	18 lbs.

Case open showing interior arrangement.



GRAFLEX FILM AND PLATE ATTACHMENTS

In the GRAFLEX Roll Holder, a positive film lock affords plate-like efficiency to the 6-exposure roll film used. (Both S.S. Panchromatic, Panatomic and Verichrome are regularly supplied for the smaller listed sizes; Verichrome only for the 7x5 size.) This desirable accessory is detachable at will and interchangeable with other GRAFLEX attachments.

Sizes provided: 4½x3¼ (No. 51 C); 5x4 (No. 53 C); and 7x5 (No. 54).

When quick re-loading counts, the GRAFLEX Film Pack Adapter is fully appreciated. Twelve-exposure daylight loading packs for it are widely distributed in a choice of emulsions, a contributing factor to its popular appeal. The GRAFLEX Film Pack Adapter interchanges with other GRAFLEX Attachments.

Sizes provided: 2½x3¼; 3¼x4¼; 3¼x5½; 4x5; and 5x7.

The GRAFLEX Cut Film Magazine affords the user the greatest selection of negative material—the wide variety of emulsions available in cut films. The films may be removed singly or in multiples for development, as the occasion demands.

The GRAFLEX Plate Magazine gives the same advantages to users of dry plates.

Both magazines are interchangeable with other GRAFLEX attachments.

Sizes provided: 12 cut films, or plates, capacity: 2½x3¼; 3¼x4¼; 4x5; and 5x7. 18 cut films, capacity: 3¼x4¼; and 4x5.

The GRAFLEX Cut Film Holder, too, affords the user the widest choice of negative material. The holder, interchangeable with other GRAFLEX attachments, accepts two films which may be removed singly for development.

The GRAFLEX Plate Holder affords like advantages to the user of dry plates and color plates.

Sizes provided: 2½x3¼; 3¼x4¼; 4x5; and 5x7. (Graphic Cut Film and Plate Holders are supplied for the 4x5 Speed Graphic with Graphic Back; Century holders in the 5x7 size.)

GRAFLEX ROLL HOLDER



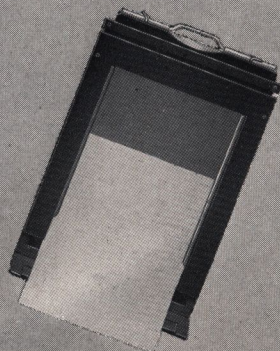
GRAFLEX FILM PACK ADAPTER



GRAFLEX CUT FILM AND PLATE MAGAZINES



GRAFLEX CUT FILM AND PLATE HOLDERS



ACCESSORY EQUIPMENT

KODAK ANASTIGMAT f.4.5



THE Kodak Anastigmat f.4.5 lens is tested to meet such standards of optical excellence that for definition and for flatness of field it is the peer of any lens made.

This quality lens, listed and recommended for GRAFLEX and Speed Graphic cameras, is available both in barrel and in between-the-lens shutter.

For schedule of Kodak Anastigmat lenses, with sizes and specifications, please turn to supplement.

GRAFLEX CARRYING CASE



A STRONG, protective carrying case is available for the Series B, Series D, Auto, Home Portrait GRAFLEX and Speed Graphic Cameras. It is made of genuine sole leather lined with corduroy and fitted with lock and key. In each instance, the carrying case accepts the camera with any GRAFLEX film or plate attachment fitted to it.

"PHOTO- GRAPHIC ENLARGING"



A COMPLETE enlarging book, written from experience, is offered in "Photographic Enlarging," by Franklin I. Jordan, F.R.P.S. It contains nineteen chapters of meaty information covering every phase of enlarging. Seventy-five illustrations include many salon winners, helpful diagrams and sketches. Cloth-bound and finely printed, this book is a valuable addition to every library.

CROWN TRIPOD



STRONG, steady and dependable, the Crown Tripod is the choice of a wide field of careful photographers. It is made of oil soaked, water proofed cherry. Expanders keep the legs firmly attached when the tripod is in use. A sole leather carrying case, with individual compartments for the detachable legs and the head, is available for each of the three larger sizes.

CROWN TRIPOD TILTING TOP — With this device in use on a Crown Tripod, the camera can be moved through a 180-degree arc, from horizontal to vertical, without adjusting the tripod legs.

For schedule of Crown Tripods and Crown Tripod Tilting Tops, complete with detailed specifications, please turn to supplement.

For prices of the accessory Equipment described on this page, please turn to supplement.

EQUIPMENT SUMMARY

THE following table presents at a glance the equipment and accessories available to the GRAFLEX camera you propose purchasing.

	National Series II	Ser. B	R.B. Ser. B	R.B. Ser. D	R.B. Auto	R.B. Home Por- trait	SPEED GRAPHICS			
							Graphic Back			Gra- flex Back
							3½x4½	4x5	5x7	
Graflex Film Pack Adapter		✓	✓	✓	✓	✓	✓			✓
Graflex Roll Holder *		✓	✓	✓	✓	✓				✓
Graflex Cut Film Holder		✓	✓	✓	✓	✓	✓			✓
Graflex Cut Film Magazine (12 Films)		✓	✓	✓	✓	✓				✓
Graflex Cut Film Magazine (18 Films) †		✓	✓	✓	✓					✓
Graphic Cut Film Holder								✓		
Century Film Holder									✓	
Graflex Plate Holder		✓	✓	✓	✓	✓	✓			✓
Graflex Plate Magazine		✓	✓	✓	✓	✓				✓
Graphic Plate Holder								✓		
Century Plate Holder									✓	
Extra Lensboard				✓	✓	✓	✓	✓	✓	✓
Carrying Case	✓	✓	✓	✓	✓	✓	✓	✓	✓	✓
Rear Focusing Panel		✓	✓	✓	✓	✓	✓	✓	✓	✓
Filters	✓	✓	✓	✓	✓	✓	✓	✓	✓	✓
Sunshade	✓			✓						
Focusing Magnifier	✓									
Graphic View Finder	✓						✓	✓	✓	✓
Rising Front					✓	✓	✓	✓	✓	✓

*Supplied in 4¼x3¼, 5x4, and 7x5 sizes only ✓Indicates that accessory may be applied

†Supplied in 3¼x4¼ and 4x5 sizes only

For prices please turn to supplement.

COLOR PHOTOGRAPHY

GRAFLEX cameras are ideally suited for color photography. Standard color plates are accommodated in the regular plate holders. It is only necessary to reverse the ground glass in the rear focusing panel to compensate for the difference in register of color plates.

Color films are used in the same manner as standard cut film or roll film.

LENSES FOR GRAFLEX AND GRAPHIC CAMERAS

IN order that GRAFLEX cameras may secure the superior results for which they are recognized, only excellent and proved lenses are offered as equipment for them. The table below demonstrates at a glance the versatility of GRAFLEX cameras with regard to lenses accommodated.

Lens Speed		National Series II	3 1/4 x 4 1/4 Ser. B	4x5 Ser. B	5x7 Ser. B	2 1/4 x 3 1/4 R. B. Ser. B	3 1/4 x 4 1/4 R. B. Ser. B	4x5 R. B. Ser. B	3 1/4 x 4 1/4 R. B. Ser. D	4x5 R. B. Ser. D	3 1/4 x 4 1/4 R. B. Auto	4x5 R. B. Auto	5x7 R. B. Home Portrait	3 1/4 x 4 1/4 Speed Graphic	4x5 Speed Graphic	5x7 Speed Graphic
f.4.5	Kodak Anastigmat		✓	✓	✓	✓	✓	✓	✓	✓	✓	✓	✓	✓	✓	✓
"	Bausch & Lomb								✓	✓	✓	✓	✓	✓	✓	✓
"	Cooke								✓	✓	✓	✓	✓	✓	✓	✓
"	Dallmeyer								✓	✓	✓	✓	✓	✓	✓	✓
"	Ross								✓	✓	✓	✓	✓	✓	✓	✓
"	Schneider								✓	✓	✓	✓	✓	✓	✓	✓
"	Voigtlander								✓	✓	✓	✓	✓	✓	✓	✓
"	Zeiss								✓	✓	✓	✓	✓	✓	✓	✓
f.3.5	Bausch & Lomb	✓														
"	Cooke								✓	✓	✓					
"	Dallmeyer								✓	✓		✓		✓	✓	
"	Ross								✓					✓	✓	
"	Schneider								✓	✓			✓	✓	✓	
"	Voigtlander								✓				✓	✓	✓	
"	Zeiss								✓	✓			✓	✓	✓	
f.2.9	Cooke								✓					✓		
"	Plaubel								✓	✓				✓	✓	
TELEPHOTO LENSES																
f.6.3	Bausch & Lomb	✓														
"	Ross								✓	✓				✓	✓	
"	Voigtlander		✓	✓		✓	✓	✓								
f.5.6	Cooke		✓	✓	✓	✓	✓	✓	✓	✓	✓	✓	✓	✓	✓	
"	Dallmeyer		✓	✓	✓	✓	✓	✓	✓	✓	✓	✓	✓	✓	✓	
f.5.5	Schneider								✓	✓	✓			✓	✓	
f.4.5	Dallmeyer			✓	✓		✓	✓	✓	✓	✓	✓	✓	✓	✓	
INFORMATION UPON REQUEST																

✓ Indicates that lens may be fitted.

For lens prices please turn to supplement.

THE GRAFLEX camera has attained its reputation as the most efficient of all "still" cameras through the scientific application of time-proven principles of optics by GRAFLEX experts in the GRAFLEX factory. The selection and fitting of the proper lens to the camera by these experts is of utmost importance, requiring as it does, knowledge of the Art together with extreme skill of workmanship and minute inspection. In their hands the photographic unit of GRAFLEX and lens is made a unit of perfection.

COMPARATIVE DATA

THE following table summarizes in a comparative way some of those factors of interest to the person selecting a camera to meet specific requirements.

National Series II	Picture Size Inches	Std. Lens Speed f. Value	Focal Length	Bellows Capacity Inches	Min. Focus Inches	Closest Working Distance	Lensboard	Sensitized Material Used
	2¼x2½	3.5	3"			42"		Roll Film
Ser. B	3¼x4¼	4.5	5½"	7		23"		Roll Film, Film Pack, Cut Film, Plates.
Ser. B	4x5	4.5	6⅜"	8⅝		23½"		Roll Film, Film Pack, Cut Film, Plates.
Ser. B	5x7	4.5	8½"	11		29"		Roll Film, Film Pack, Cut Film, Plates.
R. B. Ser. B	2¼x3¼	4.5	5½"	7⅜		21"		Film Pack, Cut Film, Plates.
R. B. Ser. B	3¼x4¼	4.5	6⅜"	8⅞		23"		Roll Film, Film Pack, Cut Film, Plates.
R. B. Ser. B	4x5	4.5	7½"	10⅞		27"		Roll Film, Film Pack, Cut Film, Plates.
R. B. Ser. D	3¼x4¼	2.9 3.5 4.5		8¼	5¾		3¼" Sq.	Roll Film, Film Pack, Cut Film, Plates.
R. B. Ser. D	4x5	2.9 3.5 4.5		12	7		3¾" Sq.	Roll Film, Film Pack, Cut Film, Plates.
R. B. Auto	3¼x4¼	3.5 4.5		15½	7½		3¼" Sq.	Roll Film, Film Pack, Cut Film, Plates.
R. B. Auto	4x5	3.5 4.5		18½	9		3¾" Sq.	Roll Film, Film Pack, Cut Film, Plates.
R. B. Home Portrait	5x7	3.5 4.5		13¾	10		5" Sq.	Roll Film, Film Pack, Cut Film, Plates.
Speed Graphic Cameras	3¼x4¼ 4x5 5x7	2.9 3.5 4.5 2.9 3.5 4.5 3.5 4.5	Dependent on lens selected	12 13½ 16	Accepts Wide Angle Lenses	According to focal length of lens used	3¼" Sq. 4" Sq. 4" Sq.	Graphic Back: Film Pack, Cut Film, Plates. Graflex Back: Film Pack, Cut Film, Plates, Roll Film.

For prices, please turn to supplement.

GRAFLEX PHOTOGRAPHIC EQUIPMENT

THE cameras and equipment herein described will be found on sale wherever photographic equipment of highest quality is sold. Dealers will gladly demonstrate the range, versatility and simplicity of operation of GRAFLEX and Graphic cameras, the GRAFLEX ENLARG-OR-PRINTER, and other GRAFLEX precision products.

GRAFLEX equipment is made by the Folmer GRAFLEX Corporation, Rochester, New York, manufacturers of:

STUDIO AND COMMERCIAL EQUIPMENT—The complete line of CENTURY, FOLMER, CROWN, and CIRKUT cameras and equipment serves every professional need.

PHOTORECORD IDENTIFICATION OUTFIT AND FOLMER IDENTIFICATION UNIT—These are two units designed to make standardized identification pictures. Both are used by police departments in the detection of criminals and prevention of crime. Correctional institutions and hospitals employ them in the registration of their inmates. Large hotels, department stores and manufacturers use them in photographically recording their personnel and in the issuance of identification passes.

FINGER PRINT CAMERA AND INSPECTOGRAPH—Two practical and efficient portable cameras, with built-in illumination, for producing accurate full-sized photographic records of finger prints, signatures, jewelry, fabric patterns and other small objects.

CUSTOM-BUILT PHOTOGRAPHIC EQUIPMENT—The conception, design and construction of special apparatus for specific and unusual purposes.

SERVICE DEPARTMENT—The Service Department is maintained to provide photographic information. GRAFLEX owners desirous of securing superior results with their equipment are invited to submit their problems or queries to this department for solution. Every helpful advice and aid will be rendered.

If additional information is desired regarding the above photographic equipment or any custom equipment to be especially constructed for specific purposes, you are cordially invited to write the Service Department.

GRAFLEX Products are American-Made

FOLMER GRAFLEX CORPORATION

ROCHESTER, N. Y.

SUPPLEMENT

GRAFLEX CATALOG

Prices herein are corrected to November 1, 1936

A LENS FOR EVERY REQUIREMENT

GRAFLEX, through its craftsmen and their years of experience, has given thorough consideration to the selection of the lenses listed herein. In each instance, such factors as speed, focal length, covering power, color correction, and perspective have been taken into account.

The Kodak and other lenses listed are therefore recommended for distinctive results. Correct installation of the lens is assured when camera and lens are purchased as a unit, since the lens in that case is fitted to the camera by GRAFLEX craftsmen.

The fast $f.2.9$ lenses are invaluable when fast instantaneous shots under unfavorable lighting conditions are sought, where soft focus effects are desired, and for subjects where depth of field is of secondary importance. $F.3.5$ lenses offer a medium between $f.2.9$ and $f.4.5$. The $f.2.9$ lens is 45% faster than the $f.3.5$ lens, while the $f.3.5$ is 65% faster than the $f.4.5$. The depth of field with $f.3.5$ lenses is greater than that obtained with $f.2.9$ lenses, but less than that obtained with $f.4.5$ lenses. Fast lenses stopped down to a smaller diaphragm opening will have a depth of field comparing favorably with lenses of a corresponding maximum opening.

Telephoto lenses afford a means for making "close-ups" of distant objects. For example, a telephoto lens with twice the focal length of the regular lens permits using the camera at twice the distance from the object without any loss in the size of the principal image. Due to their special design they require a bellows extension of but approximately one-half their listed focal length.

Telephoto lenses are supplied in varying speeds and focal lengths for GRAFLEX cameras.

Wide angle lenses, which are of special construction, photograph a greater area than other lenses of a similar focal length. These lenses are conveniently used with Speed Graphic Cameras, for which accessory wide angle beds are supplied.

National GRAFLEX Series II is equipped with the especially designed Bausch and Lomb Tessar $f.3.5$ lens of 75 mm. focal length. The Series II accepts interchangeably a 140 mm. $f.6.3$ Bausch & Lomb Telephoto Lens.

GRAFLEX Series B and GRAFLEX Revolving Back Series B models are equipped with Kodak Anastigmat $f.4.5$ lenses as standard equipment.

GRAFLEX Revolving Back Series D accepts $f.2.9$, $f.3.5$, and $f.4.5$ lenses interchangeably.

The Revolving Back Auto GRAFLEX has a generous bellows draw which permits the use of convertible lenses as well as the usual single focal length Anastigmat lenses.

Speed Graphics can be equipped with fast lenses either in barrel or in between-the-lens shutter. The latter, serving as an auxiliary to the built-in focal plane shutter, provides slower instantaneous shutter speeds and photoflash synchronization. The Speed Graphic cameras, in the $3\frac{1}{4} \times 4\frac{1}{4}$ and 4×5 sizes, will accommodate $f.3.5$ and $f.4.5$ lenses in barrel or between-the-lens shutter as well as $f.2.9$ lenses in barrel. The 5×7 Speed Graphic accepts either $f.3.5$ or $f.4.5$ lenses. Wide angle and telephoto lenses are listed for these cameras.

The GRAFLEX Enlarg-or-Printer has a removable lensboard which will accept lenses ranging from 2" to $3\frac{1}{8}$ " in focal length.

PRICES

GRAFLEX AND GRAPHIC CAMERAS

LENSES • ACCESSORIES • SUNDRIES

National GRAFLEX SERIES II

	Focal Length	2 1/4 x 2 1/2 Series II
With f.3.5 Bausch & Lomb Tessar Lens (with cable release sockets)...	75 mm	\$82.50
F.6.3 Bausch & Lomb Telephoto Lens (cost additional).....	140 mm	55.00
National Graflex Wratten Filters in mount:		
K-1, K-2, X-1, X-2, and Sky.....each		3.25
A, F, G, Aero No. 1, and Aero No. 2.....each		4.00
Wratten Filters (unmounted) for Telephoto Lens:		
K-1, K-2, Sky and Aero No. 1.....each		1.65
National Graflex Copying Attachment (closest working distance 18").....		2.75
National Graflex Copying Attachment (closest working distance 12").....		3.75
Accessory Self-Timer, for both <i>delayed exposures</i> and <i>slow speeds</i> from 1/2 sec. to 10 full seconds.....		3.50
Direct View Finder for Eye Level Photography.....		5.00
National Graflex Sun Shade.....		1.00
National Carry-All Case to accommodate camera, accessories and exposure meter.....		18.00
Grain-Leather Carrying Case.....		5.50
Suede Carrying Case (Waterproofed).....		3.50
Sportsman's Carrying Case (plush lined).....		8.50
Grain-Leather Case for Telephoto Lens.....		3.50
Carrying Case for National Graflex Filters. (Free with any six units).....		3.50

GRAFLEX SERIES B

	3 1/4 x 4 1/4		4 x 5		5 x 7	
	Focal Length	Price	Focal Length	Price	Focal Length	Price
With f.4.5 Kodak Anastigmat Lens and Film Pack Adapter..	5 1/2"	\$85.50	6 3/8"	\$101.50	8 1/2"	\$178.50
F.4.5 Dallmeyer Telephoto Lens (cost additional).....	12"	118.00		
F.5.6 Dallmeyer Telephoto Lens (cost additional).....	11"	107.00	12"	114.00	17"	199.00
F.5.6 Cooke Telephoto Lens (cost additional).....	11"	131.00	12 1/2"	140.50	15"	179.50
F.6.3 Voigtlander Telephoto Lens (cost additional).....	10"	**	11 3/8"	**		
Sole Leather Carrying Case.....		10.50		12.50		18.00

GRAFLEX REVOLVING BACK • SERIES B

	2 1/4 x 3 1/4		3 1/4 x 4 1/4		4 x 5	
	Focal Length	Price	Focal Length	Price	Focal Length	Price
With f.4.5 Kodak Anastigmat Lens and Film Pack Adapter..	5 1/2"	\$91.00	6 3/8"	\$107.00	7 1/2"	\$128.00
F.4.5 Dallmeyer Telephoto Lens (cost additional).....	12"	118.00	14"	143.50
F.5.6 Dallmeyer Telephoto Lens (cost additional).....	11"	107.00	12"	116.00	14"	139.50
F.5.6 Cooke Telephoto Lens (cost additional).....	11"	131.00	12 1/2"	140.50	15"	179.50
F.6.3 Voigtlander Telephoto Lens (cost additional).....	10"	**	11 3/8"	**		
Sole Leather Carrying Case.....		9.00		12.00		15.00

**Prices upon request.

GRAFLEX REVOLVING BACK • SERIES D

	3 1/4 x 4 1/4		4 x 5	
	Focal Length	Price	Focal Length	Price
Without Lens, including Film Pack Adapter.....		\$ 96.00		\$107.00
With f.4.5 Kodak Anastigmat Lens.....	6 3/8"	133.00	7 1/2"	157.00
With f.4.5 Bausch & Lomb Tessar Lens.....	6 3/8"	139.00	7 7/16"	160.00
With f.4.5 Cooke Aviar Lens.....	6"	173.00	7"	206.00
With f.4.5 Dallmeyer Serrac Lens.....	6"	163.50	7 1/2"	194.50
With f.4.5 Ross Xpres Lens.....	6"	146.00	7 1/4"	173.00
With f.4.5 Schneider Xenar Lens.....	6 1/2"	145.50	7 3/8"	166.50
With f.4.5 Voigtlander Heliar Lens.....	6 1/2"	162.00	7 1/8"	184.00
With f.4.5 Carl Zeiss Tessar Lens.....	6"	141.00	7"	179.00
With f.3.5 Cooke Pressic Lens.....	6 1/4"	211.50	7 1/2"	251.00
With f.3.5 Dallmeyer Dalmac Lens.....	6"	190.50	7 1/2"	222.50
With f.3.5 Ross Xpres Lens.....	6 1/2"	190.00		
With f.3.5 Schneider Xenar Lens.....	7 1/4"	168.00	8 1/4"	193.00
With f.3.5 Voigtlander Heliar Lens.....	6 1/2"	188.50		
With f.3.5 Carl Zeiss Tessar Lens.....	6 1/2"	207.00	8 1/4"	285.00#
With f.2.9 Cooke Anastigmat Lens.....	6 3/8"	195.00		
With f.2.9 Plaubel Anticomar Lens.....	6"	216.00	7"	252.00
F.4.5 Dallmeyer Telephoto Lens (cost additional)...	12"	120.50	14"	144.50
			17"	209.00
			20"	**
			24"	
F.5.5 Schneider Tele Xenar Lens (cost additional) ..	11 3/4"	77.00	14 1/4"	101.00
F.5.6 Dallmeyer Telephoto Lens (cost additional) ..	12"	122.00	14"	146.00
			17"	189.50
			20"	**
			24"	
F.5.6 Cooke Telephoto Lens (cost additional)	12 1/2"	140.50	15"	179.50
Extra Lensboard.....		.75		.90
Sole Leather Carrying Case.....		12.00		15.00

AUTO GRAFLEX REVOLVING BACK

	3 1/4 x 4 1/4		4 x 5	
	Focal Length	Price	Focal Length	Price
Without Lens, including Film Pack Adapter and Focusing Panel.....		\$115.50		\$132.50
With f.4.5 Kodak Anastigmat Lens.....	7 1/2"	165.50	10"	242.50
With f.4.5 Bausch & Lomb Tessar Lens.....	7 7/16"	168.50	9 3/4"	240.50
With f.4.5 Cooke Aviar Lens.....	8 1/4"	246.50	10"	286.50
With f.4.5 Dallmeyer Serrac Lens.....	7 1/2"	203.00	10"	268.00
With f.4.5 Ross Xpres Lens.....	7 1/4"	181.50	10"	259.00
With f.4.5 Schneider Xenar Lens.....	8 1/4"	182.50	9 1/2"	232.00
With f.4.5 Voigtlander Heliar Lens.....	8 1/4"	208.00	9 1/2"	264.50
With f.4.5 Carl Zeiss Tessar Lens.....	7"	187.50	10"	267.50#
With f.3.5 Cooke Pressic Lens.....	7 1/2"	**		
With f.3.5 Dallmeyer Dalmac Lens.....			9"	**
With f.6.3 Bausch & Lomb Convertible Protar Lens	7 7/8" *	215.50	9 1/4" †	270.50
F.4.5 Dallmeyer Telephoto Lens (cost additional) ..	14"	144.50		
	17"	209.00	17"	209.00
			20"	**
			24"	
F.5.6 Dallmeyer Telephoto Lens (cost additional) ..	14"	146.00	17"	205.00
	17"	189.50	20"	**
			24"	
F.5.6 Cooke Telephoto Lens (cost additional)	15"	179.50	20"	360.00
Extra Lensboard.....		.75		.90
Sole Leather Carrying Case.....		13.50		16.00

*Focal Length of single elements 13 3/4".

**Prices upon request.

†Focal Length of single elements 16 3/8".

#Requires Zeiss metal lensboard (cost additional) \$10.00.

R. B. HOME PORTRAIT GRAFLEX 5 x 7

	Focal Length	Price
Without Lens, including Cut Film Holder (Plate Holder optional) and Focusing Panel.....		\$240.00
With f.4.5 Kodak Anastigmat Lens	10"	350.00
With f.4.5 Kodak Anastigmat Lens.....	12"	390.00
With f.4.5 Bausch & Lomb Tessar Lens.....	11 3/4"	403.00
With f.4.5 Cooke Aviar Lens.....	12 1/2"	509.50
With f.4.5 Dallmeyer Serrac Lens.....	12"	455.00
With f.4.5 Ross Xpres Lens.....	12"	421.50
With f.4.5 Schneider Xenar Lens.....	11 3/4"	378.50
With f.4.5 Voigtlander Heliar Lens.....	12"	425.00
With f.4.5 Carl Zeiss Tessar Lens.....	12"	444.00
With f.3.5 Dallmeyer Dalmac Lens.....	12"	495.00
With f.3.5 Schneider Xenar Lens.....	11 3/4"	424.00
With f.3.5 Voigtlander Heliar Lens.....	12"	465.00
With f.3.5 Carl Zeiss Tessar Lens.....	12"	512.00#
F.4.5 Dallmeyer Telephoto Lens (cost additional).....	20"	**
	24"	**
F.5.6 Dallmeyer Telephoto Lens (cost additional).....	20"	**
	24"	**
F.5.6 Cooke Telephoto Lens (cost additional).....	20"	360.00
Extra Lensboard.....		1.50
Sole Leather Carrying Case.....		26.50

SPEED GRAPHIC 3 1/4 x 4 1/4

	Focal Length	Graphic or Graflex back†			
		Without Range Finder		With Range Finder and Mount	
		In Barrel with Iris Diaphragm	Between-the-lens Shutter	In Barrel with Iris Diaphragm	Between-the-lens Shutter
Without Lens, including one GRAFLEX Cut Film Holder (Plate Holder optional).....		\$75.00		\$86.00	
With f.4.5 Kodak Anastigmat Lens....	5 1/2"	\$108.75	\$120.00†	\$119.75	\$131.00†
With f.4.5 Bausch & Lomb Tessar Lens	5 1 3/8"	105.00	132.00†	116.00	143.00†
With f.4.5 Dallmeyer Serrac Lens....	5 1/4"	134.50	**	145.50	**
With f.4.5 Ross Xpres Lens.....	5 3/8"	119.00	**	130.00	**
With f.4.5 Schneider Xenar Lens....	5 1/4"	114.50	131.50†	125.50	142.50†
With f.4.5 Voigtlander Heliar Lens....	5 1/4"	120.00	145.00†	131.00	156.00†
With f.4.5 Carl Zeiss Tessar Lens....	5 1/4"	112.50	118.00†	123.50	129.00†
With f.3.5 Cooke Pressic Lens.....	6 1/4"	190.50		201.50	
With f.3.5 Dallmeyer Dalmac Lens...	5"	152.50	**	163.50	**
With f.3.5 Ross Xpres Lens.....	5 3/8"	153.00	**	164.00	**
With f.3.5 Schneider Xenar Lens....	6"	138.00	148.00†	149.00	159.00†
With f.3.5 Voigtlander Heliar Lens....	5 1/4"	147.50	165.00†	158.50	176.00†
With f.3.5 Carl Zeiss Tessar Lens....	5 1/4"	143.00	157.00†	154.00	168.00†
With f.2.9 Cooke Anastigmat Lens...	6 3/8"	174.00		185.00	
With f.2.9 Plaubel Anticomar Lens...	6"	195.00		206.00	

**Prices upon request.

#Require Zeiss metal lensboard (cost additional) \$10.00.

†Focusing panel, cost additional.

†Compur Shutter.

SPEED GRAPHIC 3 1/4 x 4 1/4

ACCESSORIES

	Focal Length	Without Range Finder In Barrel with Iris Diaphragm	Between-the-lens Shutter	With Range Finder and Mount In Barrel with Iris Diaphragm	Between-the-lens Shutter
Extra Lensboard.....		\$.75		\$.75	
Auxiliary Wide-Angle Bed.....		4.50		4.50	
Focusing Panel (for 3 1/4 x 4 1/4 Speed Graphic Camera, fitted with Graflex Back). Cost additional.....		5.50		5.50	
Sole Leather Carrying Case, which accepts camera, six holders, and range finder.....		11.00		11.00	
Special Carrying Case to accept 3 1/4 x 4 1/4 Speed Graphic, 12 Film or 10 Plate Holders, 10 Flash Bulbs, Photo-flash Synchronizer, Reflector, and Tripod.....		26.50		26.50	

ACCESSORY WIDE ANGLE LENSES

F.6.8 Schneider Angulon (cost additional).....	3 1/2"	\$36.50	\$50.50†	\$36.50	\$50.50†
F.18 Bausch & Lomb Series V (cost additional).....	3 5/8"	30.00		30.00	

ACCESSORY TELEPHOTO LENSES

F.4.5 Dallmeyer (cost additional).....	12"	120.50		120.50	
F.4.5 Dallmeyer (cost additional).....	14"	144.50		144.50	
F.5.5 Schneider (cost additional).....	11 3/4"	77.00		77.00	
F.5.5 Schneider (cost additional).....	14 1/4"	101.00		101.00	
F.5.6 Cooke (cost additional).....	12 1/2"	140.50		140.50	
F.5.6 Dallmeyer (cost additional).....	12"	118.00		118.00	
F.5.6 Dallmeyer (cost additional).....	14"	142.00		142.00	
F.6.3 Ross (cost additional).....	17"	165.00		165.00	
Zeiss Compur Shutters with Built-in Self Timer (cost additional).....		5.00		5.00	
Fitting charge for lenses not purchased from Folmer Graflex Corporation ..		1.50		1.50	

Extra charge for special fittings.

SPEED GRAPHIC 4 x 5

Without Lens, including one Cut Film Holder (Plate Holder optional)..... \$80.00

	Focal Length	In Barrel with Iris Diaphragm	Between-the-lens Shutter
With f.4.5 Kodak Anastigmat Lens.....	5 1/2"	\$113.75	\$125.00†
With f.4.5 Kodak Anastigmat Lens.....	6 3/8"	117.00	130.00†
With f.4.5 Bausch & Lomb Tessar Lens.....	6 3/8"	123.00	150.00†
With f.4.5 Cooke Aviar Lens.....	6"	157.00	197.50†
With f.4.5 Dallmeyer Serrac Lens.....	6"	147.50	
With f.4.5 Ross Xpres Lens.....	6"	130.00	**
With f.4.5 Schneider Xenar Lens.....	6"	124.50	144.50†
With f.4.5 Voigtlander Heliar Lens.....	6 1/2"	137.50	160.00†
With f.4.5 Carl Zeiss Tessar Lens.....	5 1/4"	117.50	123.00†
With f.4.5 Carl Zeiss Tessar Lens.....	6"	123.00	128.00†
With f.3.5 Dallmeyer Dalmac Lens.....	6"	174.50	
With f.3.5 Ross Xpres Lens.....	6 1/2"	174.00	
With f.3.5 Schneider Xenar Lens.....	6 1/2"	147.00	162.00°
With f.3.5 Voigtlander Heliar Lens.....	6 1/2"	167.50	
With f.3.5 Carl Zeiss Tessar Lens.....	6"	165.00	180.00†
With f.2.9 Plaubel Anticomar Lens.....	7"	225.00	

**Prices upon request.

°Compound Shutter.

†Compur Shutter.

‡Focusing panel, cost additional.

SPEED GRAPHIC 4 x 5 (Continued)

ACCESSORIES

	Focal Length	In Barrel with Iris Diaphragm	Between-the-lens Shutter
Extra Lensboard.....		\$ 1.50	
#Auxiliary Wide-Angle Bed.....		4.50	
Focusing Panel (for 4 x 5 Speed Graphic Camera, fitted with Graflex Back) cost additional.....		6.00	
Sole Leather Carrying Case.....		12.50	
Special Carrying Case to accept 4 x 5 Speed Graphic, 12 Film or 10 Plate Holders, 10 Flash Bulbs, Photoflash Synchronizer, Reflector, and Tripod.....		28.50	

ACCESSORY WIDE ANGLE LENSES

F.6.8 Schneider Angulon (cost additional).....	4 3/4"	42.00	\$56.00†
F.18 B & L Series V (cost additional).....	3 1/8"	30.00	

ACCESSORY TELEPHOTO LENSES

F.4.5 Dallmeyer (cost additional).....	12"	120.50	
F.4.5 Dallmeyer (cost additional).....	14"	144.50	
F.4.5 Dallmeyer (cost additional).....	17"	192.50	
F.5.5 Schneider (cost additional).....	11 3/4"	77.00	
F.5.5 Schneider (cost additional).....	14 1/4"	101.00	
F.5.6 Dallmeyer (cost additional).....	12"	118.00	
F.5.6 Dallmeyer (cost additional).....	14"	142.00	
F.5.6 Dallmeyer (cost additional).....	17"	189.50	
F.5.6 Cooke (cost additional).....	12 1/2"	140.50	
F.5.6 Cooke (cost additional).....	15"	179.50	
Zeiss Compur Shutters with Built-in Self Timer (cost additional).....			\$5.00
Fitting charge for lenses not purchased from Folmer Graflex Corporation.....			1.50
Extra charge for special fittings.			

SPEED GRAPHIC 5 x 7

Graphic or
Graflex Back†

Without Lens, including one Cut Film Holder (Plate Holder optional)..... \$96.00

	Focal Length	In Barrel with Iris Diaphragm	Between-the-lens Shutter
With f.4.5 Kodak Anastigmat Lens.....	7 1/2"	\$146.00	\$173.50†
With f.4.5 Kodak Ansastigmat Lens.....	8 1/2"	166.00	196.00°

Prices on other lenses for use with the 5 x 7 Speed Graphic will be supplied upon request.

ACCESSORIES

Focusing Panel (for 5 x 7 Speed Graphic Camera, fitted with Graflex Back) cost additional.....	8.00
Extra Lensboard.....	1.50
Sole Leather Carrying Case.....	15.50
Fitting charge for lenses not purchased from Folmer Graflex Corporation.....	1.50
Extra charge for special fittings.	

K. A. F.4.5 LENSES

WRATTEN FILTERS

Lens No.	Size of Film Covered at f.4.5 (in inches)	Equivalent Focus in inches	Outside Diameter of Barrel	Price of Lens in Barrel with Iris Diaphragm	Price of Lens with Between-the-lens Shutter	Price of Wratten Filters (Mtd. in metal cell)
31	3 1/4 x 4 1/4	5 1/2"	1 9/16"	\$ 33.75	\$ 45.00†	\$3.30
32	4 x 5	6 3/8"	1 3/4"	37.00	50.00†	3.45
33	5 x 7	7 1/2"	2"	50.00	77.50†	4.20
34	5 x 8	8 1/2"	2 3/8"	70.00	100.00°	6.00
35	6 1/2 x 8 1/2	10"	2 5/8"	110.00	145.00°	7.50
36	8 x 10	12"	3 3/8"	150.00	190.00°	

**Prices upon request. †Compur Shutter. °Compound Shutter. ‡Focusing panel, cost additional.
#Alteration charge adapting 4 x 5 Speed Graphic cameras to accept Wide-Angle Bed.....\$1.50

GRAFLEX ENLARG-OR-PRINTER

The GRAFLEX Enlarg-or-Printer, without lens..... \$87.50
 Complete with Graduated Self-Centering Masking Device, Focusing Screen, Metal Lensboard, Lamps, Connecting Cord, Book-type Negative Holder, set of seven Masks and one copy of "Photographic Enlarging." (When specified, Strip Film Holder for miniature negatives will be substituted for the set of Masks.)

ACCESSORIES

Accessory Extension Top to provide 11 x 14 contact prints or enlargements.... 19.50
 Extra Masks for cut negatives: Each..... .35
 Complete set of eight masks..... 2.50

Available in the following film sizes: 35 mm., Bantam, $\frac{1}{2}$ Vest Pocket, Full Vest Pocket, $\frac{1}{2}$ No. 120 ($\frac{1}{2}$ of $2\frac{1}{4} \times 3\frac{1}{4}$), Full No. 120, $2\frac{1}{4} \times 2\frac{1}{4}$, and $2\frac{1}{4} \times 2\frac{1}{2}$ (National GRAFLEX).

Dodging Mirror Assembly..... 2.50
 Adapter for 35 mm. Strip Film..... 2.25
 Extra "8 x 10" Unbreakable Focusing Screen..... .90
 11" x 14" Unbreakable Focusing Screen (for use with Extension Top)..... 1.75
 Extra Standard Lensboards..... .75

The following are available: (a) National GRAFLEX lensboard; (b) Contax lensboard; (c) Leica lensboard; (d) the No. 1 Lensboard with $\frac{1}{8}$ " opening; (e) the No. 2 Lensboard with $\frac{3}{8}$ " opening; (f) the No. 3 Lensboard with 1" opening; (g) the No. 4 Lensboard with $1\frac{1}{4}$ " opening; (h) and blank lensboards if desired.

Special Lensboard to accept Rigid Mount Contax Lenses..... 3.50

ACCESSORY LENSES FOR GRAFLEX ENLARG-OR-PRINTER

	Focal Length	Lensboard Required	
F.3 Goerz Hypar.....	2"	No. 3	\$36.00
F.3.5 Carl Zeiss Tessar.....	2"	No. 1	35.00
F.4.5 Carl Zeiss Tessar.....	2"	No. 1	33.00
F.4.5 Bausch & Lomb Tessar.....	3"	Nat'l	29.50
F.4.5 Carl Zeiss Tessar.....	3"	No. 1	33.00
F.6.3 Hugo Meyer Trioplan.....	3"	No. 3	18.00
F.6.3 Carl Zeiss Tessar.....	3"	No. 1	25.00
F.4.5 Goerz Dogmar.....	$3\frac{1}{8}$ "	No. 2	33.00
F.6.8 Goerz Dagor.....	$3\frac{1}{8}$ "	No. 4	43.50
Fitting charge for lenses not purchased from Graflex.....			1.00

Extra charge for special fittings

"PHOTOGRAPHIC ENLARGING"

A complete 224 page discussion of Photographic Enlarging by Franklin I. Jordan
 F.R.P.S. Nineteen chapters. Seventy-five illustrations..... \$3.50

GRAFLEX COPYGRAPH

The GRAFLEX Copygraph Outfit Complete includes: the base (which is also the carrying case); separable upright column with means for attaching to base; camera supporting bracket; lighting system, inclusive of lamps, reflectors, adjustable supporting arms, bracket for attaching to post, and connecting cord with necessary plug-in socket..... \$58.50
 The above Outfit, without Lighting System..... 39.00
 The Lighting System only..... 19.50
 Microscope Adapter (Specify whether for National Graflex or lensboard)..... 3.50
 Additional $15\frac{1}{2}$ " sections for Upright Column, each..... 5.75

FILM AND PLATE ATTACHMENTS

	2 1/4 x 3 1/4	3 1/4 x 4 1/4	3 1/4 x 5 1/2	4 x 5	5 x 7
Graflex Film Pack Adapter.....	\$ 5.50	\$ 5.50	\$6.50	\$ 6.50	\$ 8.50
Graflex Roll Holder.....	NO. 51 12.50		NO. 53 13.50 NO. 54 16.00		
Graflex Cut Film Magazine (12 Septums)	13.00	14.50		16.50	19.00
Graflex Cut Film Magazine (18 Septums)		18.50		20.50	
Graflex Plate Magazine.....	13.00	14.50		16.50	19.00
Graflex Cut Film Holder.....	3.50	3.75		4.00	4.50
Graflex Plate Holder.....	3.50	3.75		4.00	4.50
Graphic Utility Cut Film Holder.....				2.50	
Graphic Press Cut Film Holder.....				2.75	
Graphic Press Plate Holder.....				2.75	
Century Cut Film Holder.....					2.90
Century Plate Holder.....					2.90
Graflex Lantern Slide Plate Holder.....		4.50			

FOCUSING PANELS FOR GRAFLEX CAMERAS

2 1/4 x 3 1/4.....	\$4.50
3 1/4 x 4 1/4.....	5.50
4 x 5.....	6.00
5 x 7.....	8.00

GRAPHIC SIGHT FINDERS

3 1/4 x 4 1/4.....	\$4.00
4 x 5.....	4.50
5 x 7.....	5.25

CROWN TRIPODS

	Length Closed	Length Extended	Top Diameter	Weight of Camera Carried	
Jr.	17 in.	3 ft., 8 in.	3 3/8 in.	4 lbs.	\$ 6.75
Unit	18 1/2 in.	3 ft., 8 in.	3 1/2 in.	4 lbs.	6.75
No. 1	16 in.	4 ft., 4 in.	4 in.	6 lbs.	10.00
No. 2	17 in.	4 ft., 8 in.	6 in.	9 lbs.	11.00
No. 4	20 in.	5 ft., 6 in.	6 1/2 in.	18 lbs.	13.50

NOTE: All tripod screws carry standard threads, fitting GRAFLEX and other Cameras.

CARRYING CASES FOR CROWN TRIPODS

No. 1.....	\$ 7.50
No. 2.....	8.50
No. 4.....	10.00

COMBINATION TRIPOD

No. 3 for cameras 8 x 10 and 10 x 12.....	\$ 8.50
---	---------

CROWN TRIPOD TILTING TOPS

No. 2 fits No. 1 and No. 2 Crown Tripod.....	\$ 4.00
No. 4 fits No. 4 Crown Tripod.....	4.50

FILM CARTRIDGES FOR GRAFLEX ROLL HOLDERS

	Verichrome	Panatomic and Supersensitive Panchromatic
No. 50—3 1/4 x 2 1/4, 6 exposures.....	\$.30	
No. 51—4 1/4 x 3 1/4, 6 exposures.....	.45	\$.55
No. 52—5 1/2 x 3 1/4, 6 exposures.....	.55	
No. 53—5 x 4, 6 exposures.....	.55	.65
No. 54—7 x 5, 6 exposures.....	.95	

The prices of Cameras, Lenses and Accessories listed herein are subject to change without notice.

FOLMER GRAFLEX CORPORATION

ROCHESTER, N. Y.

Printed in U. S. A.

GRAFLEX

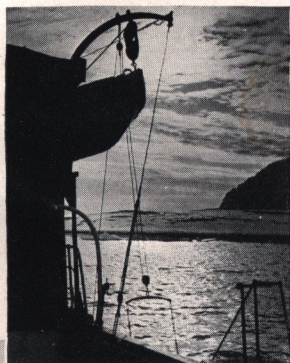


"Poise" Graflexed by Victor Keppler

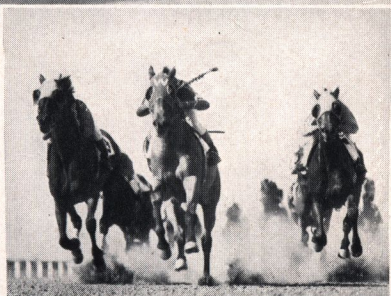


"Lookout" Graflexed by A. W. Servatius

"Alaskan Silhouette" Graflexed by
Dr. Richard L. Sutton



"Winter Sunlight"
Graflexed by John
Gilbert Nelson



"Home Stretch"
Graflexed by
Chas. M. Smyth



"Skyways" Graflexed by Capt. A. W. Stevens

**FOR MORE
INTERESTING
PICTURES**



The pictures comprising the cover Photomontage were Graflexed by Frank Buck, I. D. Conklin, Carl T. Julien, Floyd Mason, Chas. N. Monteith, E. Rueppel, Carl Sandstrom, F. F. Somberger, M. D., James D. Thomson and Len Wetherall.

FOLMER GRAFLEX CORPORATION

Rochester

New York

GEORGE MURPHY, INC.

57 East 9th Street
NEW YORK CITY