

BOLEX 155

MACROZOOM



World Premiere!

BOLEX 155

MACROZOOM

Film at miles



Film at yards



**A unique optical performance!
Exclusive with Bolex!**

The Bolex Macrozoom 8.5–30 mm f/1.9 lens of the Bolex 155 camera has the widest focusing range ever built into a zoom lens.

This exclusive feature, combined with the variable focal length, offers new and exciting opportunities in picture composition and choice of subjects. This is the first zoom lens that allows you to film so close that the subject actually touches the sunshade of the camera. All this, without any restrictions, without adding any accessories, without extension tubes, without close-up lenses, without complicated adjustments. Simply turn the focusing knob until the picture in the reflex viewfinder is sharp, and shoot!

The first Super 8 zoom camera which films from one inch to infinity!

18¢

Film at two feet

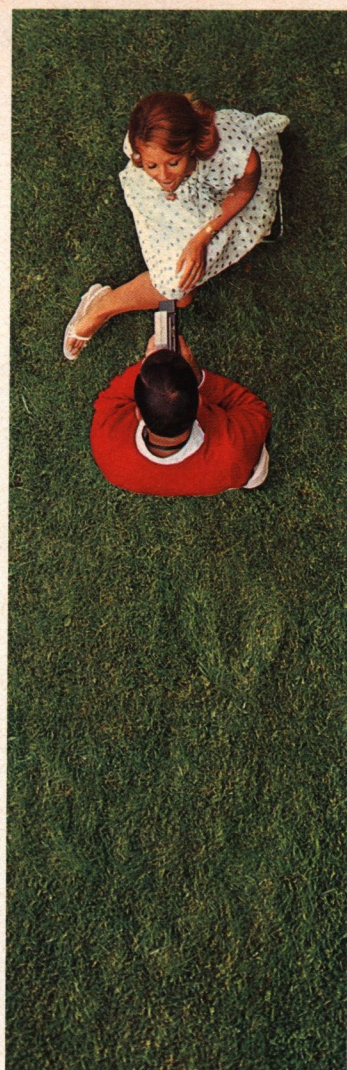


Film at one inch!



You have complete freedom of action and freedom in framing and choice of subject matter. Film whatever interests you: a far away mountain range, children playing a few feet away, a face filling the frame, an insect within an inch of the camera lens. Nothing is too small to be recorded with the Bolex 155. The Macro-zoom lens surpasses the performance of any other optical system ever developed.

As is well known, close-ups are the most interesting to watch on the screen. Alternate these with medium and long shots, and your films will gain amazing impact and a new, distinctive style of their own. With the Bolex 155 camera, undreamed possibilities are within your reach, and you can achieve these most spectacular results, without any special skill or know-how. Exclusive technical advantages and traditional Swiss quality make the Bolex 155 the Super 8 camera par excellence.

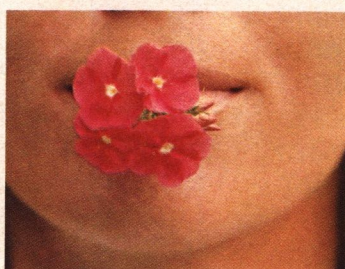


Breaking the 'minimum distance' barrier!

The two extreme left illustrations show the minimum shooting distances of conventional zoom lenses: the point where they reach the limit of their close-up capabilities. With the Bolex Macro-zoom, there is no such limit! Even in poor light, with a large diaphragm opening and the resulting narrow depth-of-field, you can film any subject at close range. Simply focus the image in the viewfinder with its coincident image rangefinder—and leave the rest to the camera. With the Bolex 155, you break with ease the 'minimum distance' barrier. With the Bolex 155, there is really no 'minimum distance'.

Even with a handheld camera, you can achieve steady close-ups because you can film at short focal lengths where camera movement is minimized. Bolex 155 close-ups are not made by extending the focal length, but by going close with the result that subjects are reproduced on the screen in their natural perspective, standing out well against their background. There's none of the distorted, flattened effect that results from using long telephoto lens settings for close-ups.

The extreme versatility of the Bolex 155 camera enables you to film at normal or close range, with the lens set at short or long focal length, and to capture the most unexpected scenes and subjects at a moment's notice, with the carefree confidence that your pictures will be perfect every time!



The Wonderland of Close-ups

The Bolex 155 Macrozoom camera introduces you to another world, up to now penetrated only with special optical equipment. It offers you wide and wonderful new horizons, allows you to uncover unexpected aspects of the commonplace, gives an entirely new dimension to your filming. Now, you can go as close as you like to any subject and achieve the most spectacular results. At 1" from the lens, the area covered is less than 1" wide—just large enough for a bee! Close-range filming will spice your movies with exciting variety and originality. The Bolex 155 allows you and your imagination unlimited scope, yields results beyond your most ambitious hopes.



Portraits

In cramped quarters, portraits are often not possible with ordinary zoom lenses because the camera does not permit focusing at the necessary close distances. With the Bolex 155, this problem just doesn't arise! Wherever you may be—in a plane, car, bus, a cable-car, on a boat or balcony, sitting at table—you can capture close-ups of faces and

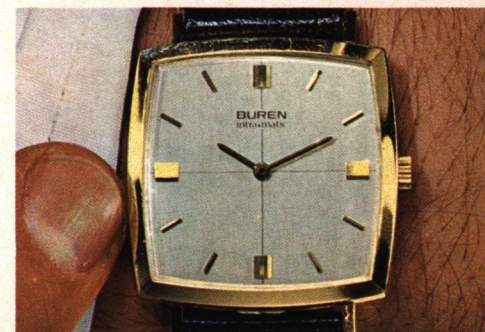


fleeting expressions. By holding the camera at arm's length, you can even take your own portrait, profile or full face! And interior shots pose no more problems either. If the lighting is insufficient, you simply mount the powerful Bolex S2 Lite on the 155.

Extreme close-ups

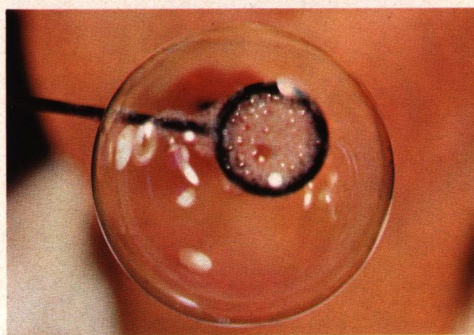
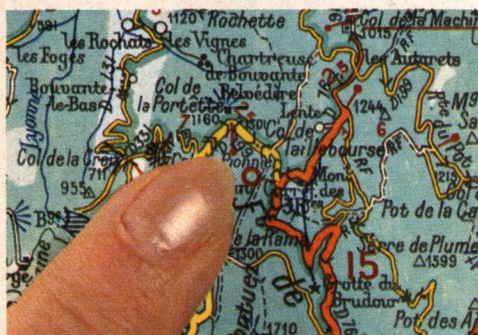
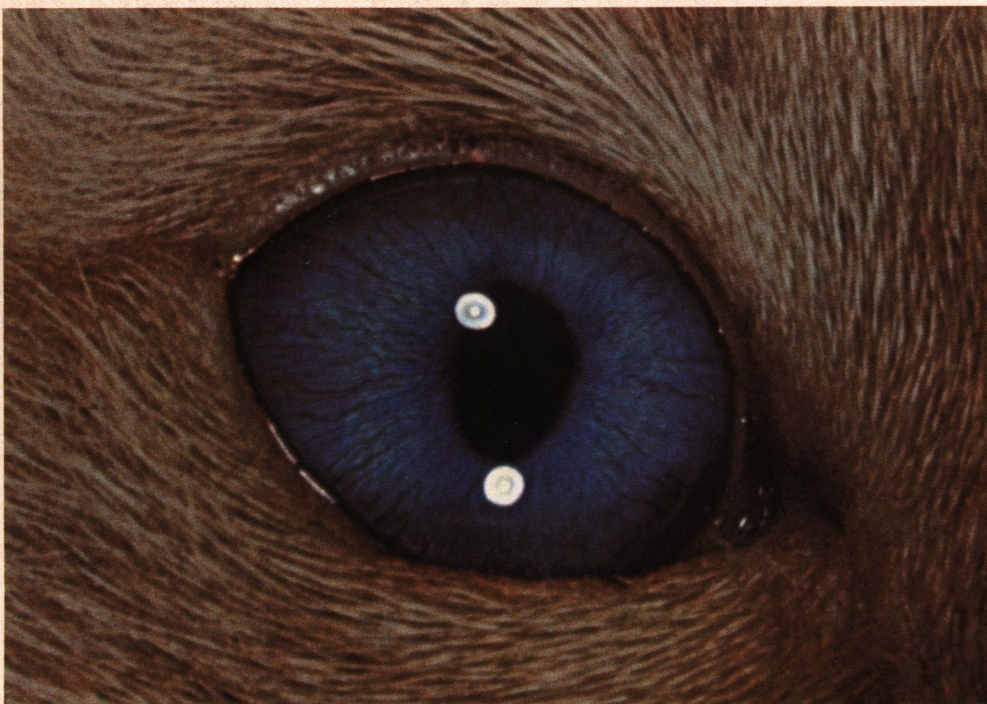
You will marvel at the images in the viewfinder when filming at close range—but imagine the effect the same image will produce when it is magnified thousands of times on the screen! The tiniest subject assumes amazing proportions. The dancing reflections of a drop of water, the multicolored flame of a candle, the brilliant pupil of an eye, the dial of your wristwatch, the glowing tip of a cigarette, the point of a pen tracing a title, the flashing of a diamond—these are only a few of the innumerable possibilities open to you.

The Bolex 155 camera lends itself beautifully to films of children. What could be more appealing than a close-up of a child's wondering gaze, a clumsy little hand, a laughing mouth? You can even bring their toys into the fun. An electric train thunders along like a powerful express; a teddy bear's head fills the screen ; a signal flashes in



Multitrix

The Bolex 155 camera is ideal for weekend and travel films. Instead of time-consuming editing on your return, you can incorporate into your films, exactly where they belong, views from picture postcards or travel folders, handwritten titles, a city map, an itinerary drawn on a map, newspaper clippings or magazine illustrations, color transparencies, showing the interior of a



close-up! You can film their own drawings, or pictures from their story books.

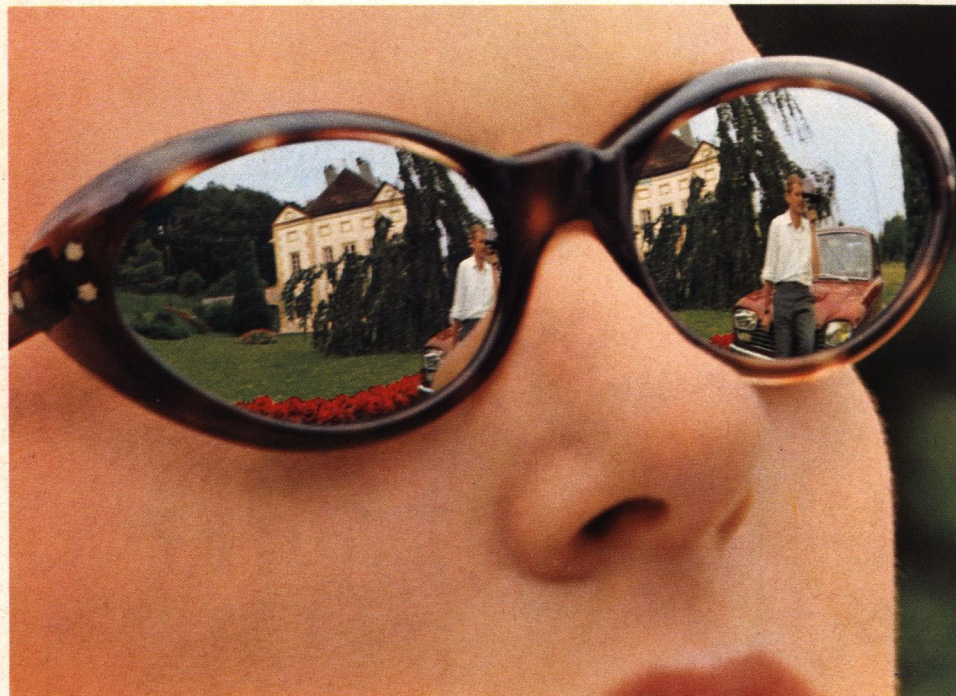
If you are a nature lover, the Bolex 155 will be your most valued companion! You can capture a host of subjects in all their colorful glory: a dew-spangled flower, the delicate structure of a leaf against the light, frosted pine needles, a bee at its work. Here is a wonderful, new world, fascinating and often awe-inspiring— a world which, thanks to macrofilming, is now within your reach!



church or museum that you are unable to visit or where the light is insufficient for filming. You will find the Multitrix accessory, supplied with the camera, invaluable for shots like these. Serving as an optical bench and locked to the camera, it allows you to film handheld any document; and, most important, the Multitrix is small enough to carry on the trip so that all these 'inserts' can be filmed on location.

Special Effects

The exceptional optical performance of the Bolex 155 camera makes it simple to achieve all kinds of spectacular tricks and special effects. For instance, you can fill the Super 8 frame with the reflections of subjects on eyeglasses, or Christmas tree balls. You can add titles, on acetate sheets, in front of an animated scene, then make them literally disappear by maneuvering the Multitrix mount. On any background, you can superimpose a contrasting foreground—multi-colored marbles or a



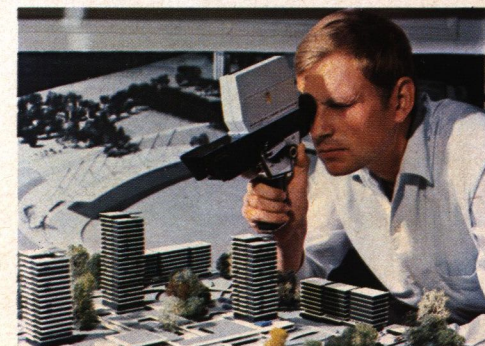
soap bubble, for example. You can also produce fascinating pictures by pouring colored fruit syrup into a glass of mineral water and filming the dancing movement of the syrup in close-up and slow motion, adding subtle lighting effects for extra impact. You can even flirt with the realms of fantasy, produce weird and wonderful effects by shifting focus from one inch to infinity, simply by turning the distance knob. For instance, you could begin by focusing on the top of a swampgrass,

one inch or two away from the lens, then move on to a title on an acetate sheet, placed further away, then pass on to the ocean waves in the background. The shift of focus also makes excellent transitions between scenes with the first scene fading away as if by magic. This new technique for producing dissolves makes it extremely simple to achieve pleasing and artistic scene transitions. You can also shoot through masks, keyhole, binocular, and other shapes mounted in the Multitrix and, by moving the mask while filming, create the illusion of the camera's actually moving through the mask. The Bolex 155 camera opens up rich new vistas to your imagination and ingenuity.



Professional applications

With its simple and accurate close-up filming possibility, the Bolex 155 camera is the ideal Super 8 camera for educational, medical, industrial and research filming. The camera makes it easy for architects, scientists, teachers, doctors, biologists, engineers to show close-ups of models, mock-ups, drawings and documents, to demonstrate details of laboratory processes or operations, chemical and biological reactions. Its field of action is virtually limitless.



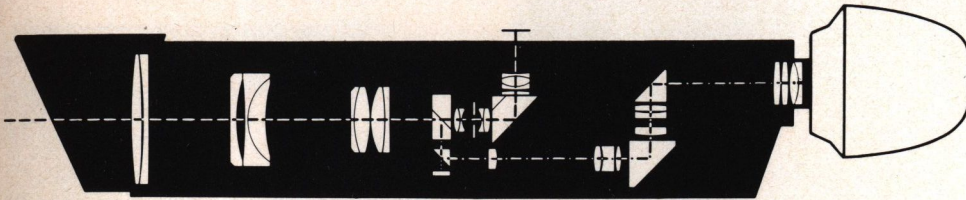
Paillard-Bolex MACROZOOM 8.5-30 mm f / 1.9 lens



24 x 18 mm

The Macrozoom lens, based on a revolutionary new concept and engineered with extreme precision is a Paillard exclusive. It is the world's first zoom lens capable of filming at every distance, from 1" (from the lens) to

Here, reproduced life-size, is the smallest filming field covered by the extraordinary Macrozoom lens: 24 mm x 18 mm, or less than 1" wide. In order to obtain this field size from a distance of three feet—the minimum filming distance for



infinity, without optical accessories or special adjustment. This is then the first zoom lens with a power of accommodation higher than the human eye! This unique performance is due to a revolutionary optical formula, demanding an exceptional degree of manufacturing precision. With its unrivalled experience in the field of high precision, Paillard S.A. has succeeded in creating a new optical system of outstanding qualities:

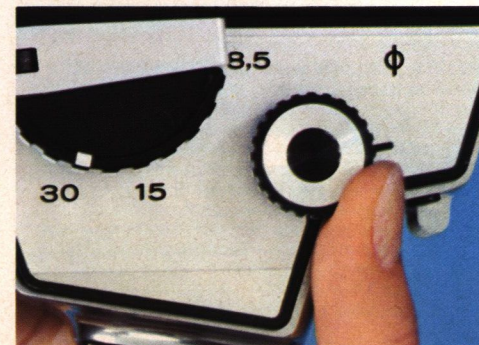
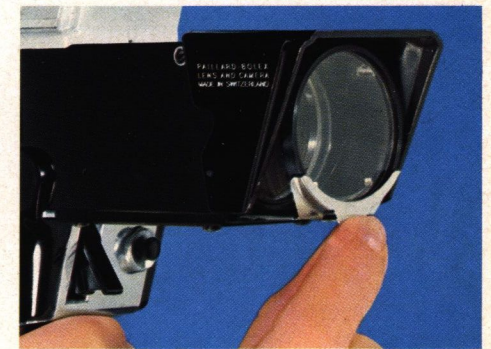
- a Macrozoom lens, comprising 17 coated lens elements, several of which are also U.V. absorbing, thereby eliminating the need for haze filters, a 90° prism which projects the image on to the film, and two prisms directing the light rays into the viewfinder and the photo-resistant cell of the light meter.
 - a reflex viewfinder with coincident image rangefinder, composed of 11 lens components and three prisms.
- This unique optical system is designed, manufactured, assembled, adjusted and inspected by a carefully selected team of specialists, especially trained for this meticulous work to the exactingly high standards demanded by Paillard.

ordinary zoom lenses—the lens would have to have a focal length of 150 mm, and such a lens could hardly produce steady pictures with a handheld camera. On the Bolex 155, close-ups are made, not by extending the focal length, but by going close; and good picture steadiness is obtained even at the maximum focal length of 30 mm. On the other hand, the short focal length of 8.5 mm offers good filming possibilities indoors or in other cramped quarters. The Macrozoom lens therefore offers unrivalled possibilities for picture composition, from a sweeping landscape to the smallest detail filmed in macrocinematography!

The brightness and large size of the image in the reflex viewfinder make for easy viewing and framing while the coincident image rangefinder ensures maximum focusing accuracy.

Technical Data

- Paillard-Bolex Macrozoom 8.5-30 mm f/1.9 lens.
- Viewfinder with coincident image rangefinder; large aerial image, lifesize at the standard 15 mm focal length.
- Focusing range: 1" from the front lens (6" from the filmplane) to infinity; distance knob operated with the thumb.
- Focal length adjusted with a milled knob, fitted with a folding lever permits rapid selection of appropriate focal length and zoom effects at any desired speed.
- Automatic diaphragm setting by a photo-resistant cell, which measures the light through the lens. Power supply: two Mallory PX-13 batteries; battery level checked in viewfinder. Automatic adjustment of film sensitivities from 25 to 160 ASA.
- Diaphragm lock which can be operated before or during filming, simply by pressing a push-button.
- Large f/1.9 aperture permits filming even in poor light.
- Minimum aperture of f/16 safeguards against under exposure in snow or water scenes.
- Signals visible in viewfinder:
 - diaphragm opening: indicated by a mobile needle;
 - insufficient light: needle in red zone;
 - excessive light: needle in yellow zone;
 - end of film, or absence of cartridge: indicated by black band in the viewfinder;
 - condition of motor and electric eye batteries: indicated by position of the mobile needle.
- Swiveling lens hood: folded forward, serves as



- lens cap to protect lens and prolong the life of the electric eye batteries; can be used to achieve 'wipe' effects; slips back for close-range filming.
- Viewfinder eyepiece adjusts to individual eyesight and locks in position; viewfinder can be closed with light trap.
- Eyecup can be rotated for right or left eye viewing, folded back for filmmakers with eyeglasses.
- Conversion filter incorporated in the lens.
- Multitrix, supplied with camera; permits reproduction of documents and tricks; fits into lens base.
- Filter-mount supplied with camera fits into lens mount and takes standard Series VI filters.

Designed for
convenience



Technical Data

- Rapid and reliable loading, with one hand, while keeping camera hanging around the neck. Film identification window on side of magazine.
- Electric motor, with generous power reserve, housed in grip.
- Power supply: four flashlight 1.5 volt AA batteries—one set sufficient for about twenty 50 ft. cartridges. Batteries visible in the magazine so that their condition can be checked and possible electrolyte leakage can be detected. Battery condition checked in viewfinder, too.
- Release pushes up to prevent accidental starting.

- Filming methods:

- Normal running at 18 fps. One cartridge provides 3 min., 20 sec. filming.
- Slow motion at 32 fps, by pressing a push-button.
- Continuous filming, by using a cable release with lock.
- Single-frame filming with a special accessory.
- Watch-dial film counter of completely new design; one revolution of the needle corresponds to the total length of film in one cartridge. 24 divisions, each representing 8 seconds of filming (average scene length) at the speed of 18 fps.
- Accessory shoe on right side of camera holds the 650 W S2 Bolex quartz Lite.

Hung around the neck or shoulder, the Bolex 155 camera allows complete freedom of movement. Take it along wherever you go; you will never consider it an inconvenience, something you may get tired of. Always within reach, instantly ready for action, it enables you to film spontaneously, whenever and wherever you see something interesting. You will appreciate, too, how easy and comfortable the camera is to hold. Its functional design and perfect weight distribution ensure extremely steady pictures, even when filming with one hand. Everything about the Bolex 155 camera has been designed for maximum convenience, maximum performance, and maximum simplicity of use.

Practical accessories

(supplied on request)



Minipod

All-purpose support which is as unique as the 155 camera. Camera can be fixed firmly in any position. The completely movable legs, which can be locked in any position, permit its use anywhere, on uneven ground, on a staircase, the hood of a car, a window ledge—and can also be used to steady the camera, against a tree or wall, for instance. It also serves as a table tripod or a copy stand in close-up filming. A detailed leaflet is available on request.



Bolex Monopod

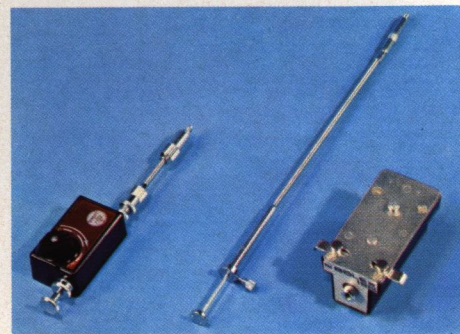
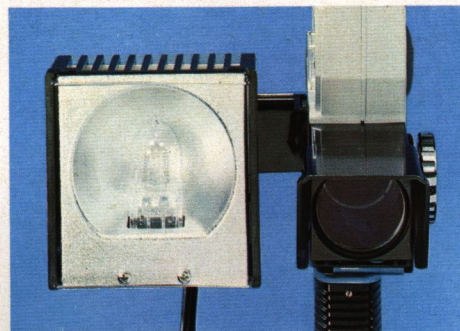
Lightweight and compact, the monopod improves picture steadiness. Also available with a ball joint head for easy tilting.

Bolex quartz 650 W S2 Lite

Mounted on to the right side of the camera, the S2 lamp provides a high light output with uniform distribution over a large area. Its switch automatically controls the position of the conversion filter incorporated in the lens. The light can also be used off the camera.

Single-frame release

Fitting in front of the camera release, this accessory enables you to produce



animation, accelerated motion, and trick effects.

8" cable release

Supplied with the single-frame release. Can also be used separately. Fitted with a lock, it allows continuous running of the camera.

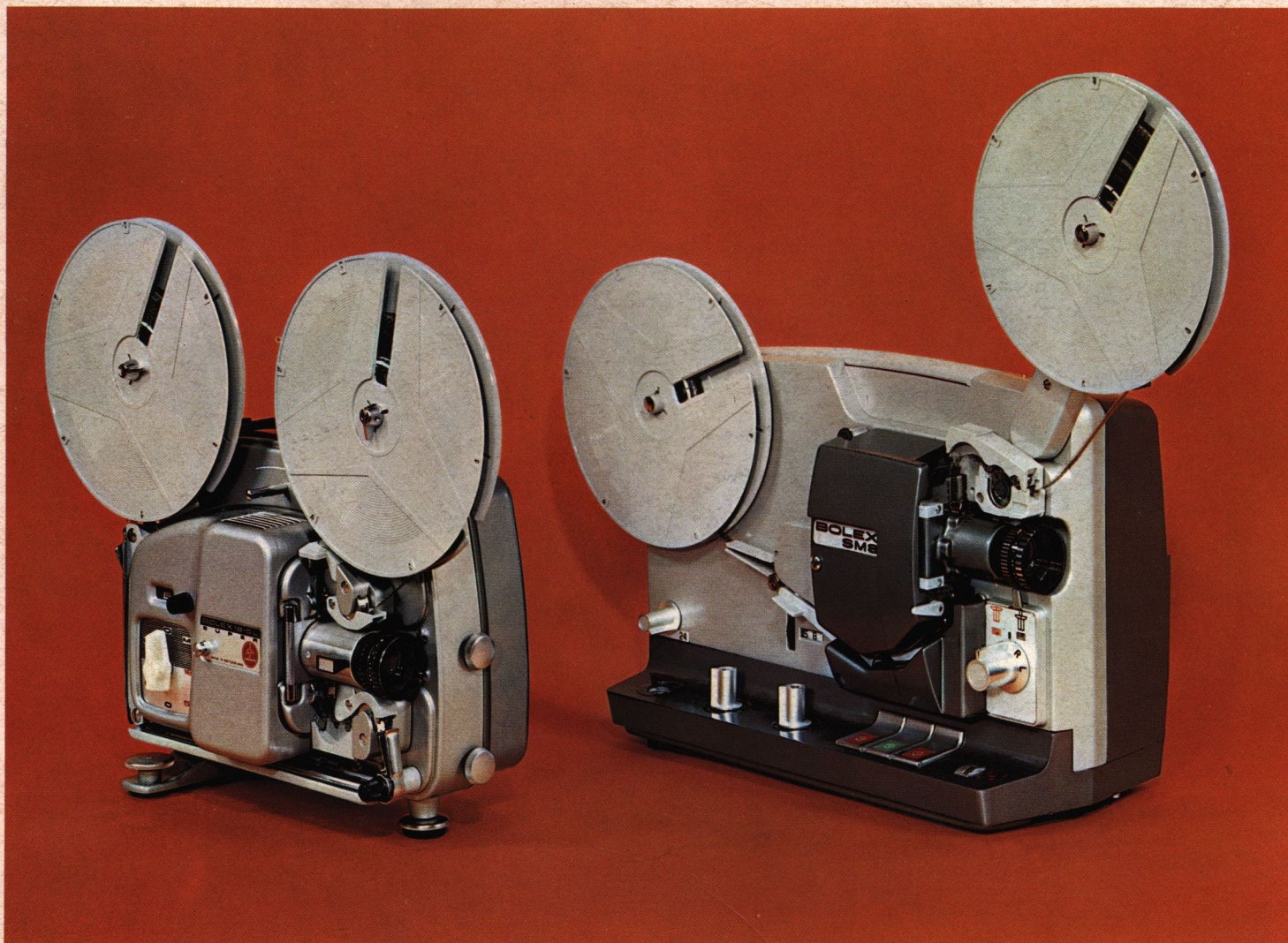
Selftimer

Starts the camera running after 6 sec. for a pre-determined time, which can be set on the selftimer dial.

Rigid carrying case

Provides smart protection for the camera and sufficient space for the Multitrix, several film cartridges, and small accessories.





Successful shows with Bolex projectors

To do full justice to your Super 8 films, choose the Bolex 18-5 L Super silent projector, or the Bolex SM8 magnetic sound projector. Both models offer you great sturdiness, reliable operation, maximum film protection, and extreme simplicity of use, due in particular to the automatic reel-to-reel film threading. A wide choice of top quality Paillard-

Bolex Hi-Fi lenses—fixed focal length or zoom—ensure faithful, color-true pictures, while the Bolex SM 8 projector also features excellent sound reproduction.

Bolex: a byword for quality

Bolex products are manufactured with the utmost care and subjected to exhaustive tests. They therefore meet the most exacting standards of high precision and quality for which the name of Bolex is now world renowned.

After-sales service

Our international organization offers impeccable after-sales service throughout the world. You can entrust your Bolex equipment to a Paillard-Bolex distributor with complete confidence. He employs qualified technicians, usually trained in our factories in Switzerland.

**Paillard S.A., Sainte-Croix
(Switzerland)**

Paillard Incorporated
1900 Lower Road
Linden, N.J. 07036

Other Paillard products:
HERMES typewriters and figuring machines.

Paillard S.A. reserves the right to modify, without prior notification, the design and features of the equipment described in this brochure.