

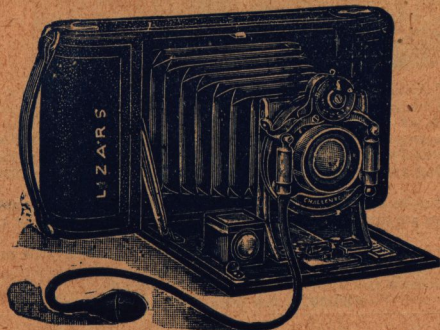
A SPECIAL OFFER

TO FURTHER POPULARISE THE

“Challenge” British-Made Cameras.

“They speak for themselves when compared with any foreign or other rival.”

THE
“CHALLENGE”
DAYSPPOOL.



Simplicity.
Reliability.
Efficiency.

200 Cameras of this Popular Model in $\frac{1}{4}$ -plate Size, retailing at £3 12 6, are offered at the price of Lens and Shutter only,

Namely 46/-

This offer is simply an advertisement and is made in order to further establish the sterling qualities of the

“CHALLENGE” CAMERAS.

SPECIAL NOTE.

Only the above number of Cameras will be supplied at this price, and orders will be executed strictly in rotation.

The Cameras are leather-covered, and are fitted with the famous Beck Symmetrical Lens in Unicum Shutter. (For full particulars see next page).

The Simplest and Most Perfect DAYLIGHT LOADING FILM CAMERA MANUFACTURED.



Lizars' "Challenge" Dayspool No. 1.

Can also be used with Plates.

Camera—Of the Folding Pocket type, either polished or covered in best hard Morocco grained leather. Handsome leather bellows with a new and improved method of fixing to the Camera safeguarding all risk of admission of stray light. Instantly opened and securely fixed at any position with quick acting clamping screw. There is also an automatic catch, which locks the front when at the infinity distance. A carefully graduated scale for various distances is fixed to the baseboard. Rising and cross front for horizontal and vertical pictures. Can be used on a stand.

Shutter—Is the famous Bausch & Lomb "Unicum," with time and instantaneous movements.
Lenses—All lenses are carefully selected and tested before fixing to the cameras, and each fitted with Iris diaphragm.

Finder—The new brilliant form, giving approximately the same view as that shown by the lens and reversible for horizontal or vertical pictures.

Finish—Great exactness and most beautiful work throughout.

PRICES, as per Specification,

Fitted with	Size		Size	
	3½×4¼ ¼-plate.	5×4	Post Card 5½×3½	Size 7×5
The "Challenge" Beck Symmetrical Lens	3 12 6	4 10 0	4 12 6	5 5 0
Aldis Lens, Series II., F/6'	4 10 0	6 0 0	6 2 6	7 12 6
Taylor, Taylor & Hobson Lens	4 12 6	6 2 6	6 5 0	7 12 6
Ross Symmetric Anastigmat Lens	—	7 5 0	7 7 6	9 0 0
Ross' Homocentric Lens Series C F/6'3	7 2 6	8 12 6	8 17 6	10 17 6
Taylor & Hobson "Cooke" Lens, F/6'5	7 2 6	8 12 6	8 17 6	10 17 6
Ross-Goerz Double Anastigmat Lens, Series III., F/6'8	8 2 6	9 17 6	10 2 6	12 2 6
Dallmeyer Stigmatic Lens, F/6	8 12 6	9 12 6	—	11 12 6

The New "Koilos" Sector Shutter (Speeds to 1/300 Second) can be supplied in place of the "Unicum" at an additional cost of 11/- in ¼ Plate and 5×4 sizes.

NOTE—The Dallmeyer Lens included in above price is No. 2 for ¼-plate, No. 2 for 5×4, and No. 3 for 7×5.

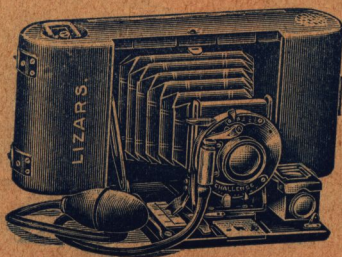
Camera only, and fitting customer's own Shutter and Lens (not exceeding 5½ in. focus for ¼-plate, 6 in. for 5×4 and Post Card size and 8 in. for 7×5), supplying and fitting view finder, and scaling	2 10 0	3 5 0	3 10 0	4 5 0
Plate Adapter, Focussing Screen with Hood, and one Double Dark Slide with Safety light traps, and Aluminium Draw-out Shutters	0 11 6	0 13 6	0 13 6	0 16 6
Extra Double Dark Slides	0 5 0	0 6 6	0 7 6	0 8 0
Ordinary pattern book form Double Dark Slides in place of the solid pattern each, extra	0 3 6	0 4 0	—	0 4 6
Solid Leather Case to hold Camera	0 6 6	0 8 6	0 9 6	0 12 0
" " " " Plate Adapter and three Slides	0 6 6	0 8 6	0 9 6	0 12 0

See Preceding Page.

Lizars' "Challenge" Junior Dayspools.

Ideal Pocket Cameras

For
DAYLIGHT
LOADING
FILMS.



High-Class
Construction.
Exceedingly
Compact.

THE Junior Dayspool Cameras have been designed to meet the demand for a high-class and really compact instrument, suited for the most serious workers.

They are in every respect identical with the specification of the No. 1 Dayspool with the exception of the shutter, which is a Bausch and Lomb, with time and instantaneous movements, approximately from $\frac{1}{25}$ th to $\frac{1}{100}$ th part of a second. This Shutter is automatic, or ever-set, on the same principle as the famous automatic "Unicum."

The Lenses are Rapid Rectilinear of superior quality, and have Iris Diaphragm.

The Cameras can be loaded and unloaded in daylight, and are supplied with the new brilliant view-finders.

MADE IN THREE SIZES.

PRICES—	JUNIOR "A" for pictures $2\frac{1}{4} \times 2\frac{1}{4}$	JUNIOR "B" for pictures $2\frac{1}{4} \times 3\frac{1}{4}$	JUNIOR "C" for pictures $2\frac{1}{2} \times 4\frac{1}{4}$
With "Challenge" R.R. Lens	£2 2 0	£2 12 6	£2 15 0
Solid Leather Case to hold Camera	5 6	5 6	6 0
Dimensions of Camera	$5\frac{3}{8} \times 3\frac{3}{8} \times 1\frac{3}{4}$	$7\frac{3}{8} \times 3\frac{3}{8} \times 1\frac{3}{4}$	$8\frac{1}{8} \times 3\frac{3}{8} \times 1\frac{3}{4}$
Weight	15 ozs.	16 ozs.	17 ozs.

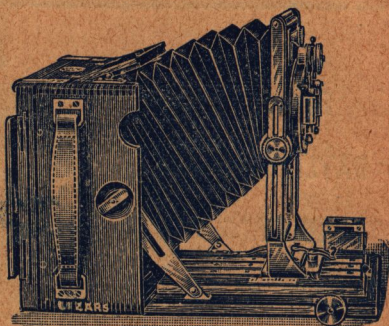
The Junior "B" Model is also made suitable for use with plates.

Focussing Screen and one Slide, 9/-; Extra double dark Slides, 4/- each.

Lizars' "Challenge" DE LUXE CAMERA. (Patent)



An Unqualified Success.



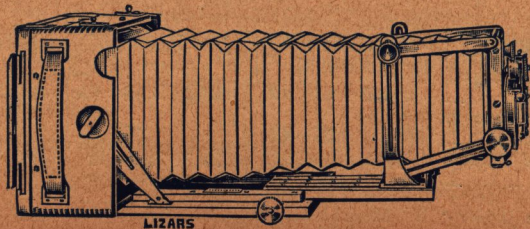
DE LUXE CAMERA OPEN FOR ORDINARY WORK. DE LUXE CAMERA SHOWING ENORMOUS FRONT RISE.

A Camera possessing an invaluable range of adjustments hitherto unable to be acquired in an instrument of moderate dimensions.

The fact that it can be used as an ordinary Hand or Stand Camera, embracing at the same time all the requirements for Copying, architectural, wide angle, and tele-photographic work, with sufficient extension to use the single component of most lenses, will convey an appreciable idea of its many accomplishments, which are all attained in a very simple manner.

As a result of much careful thought and experiment, the combination in a single instrument capable of being utilized for all the work described will appeal to the serious worker as well as the beginner, who will in time recognise the great advantages to be gained by such a camera.

For ordinary hand use the camera is simply opened and pulled forward to position, **the universal movements being brought into action only when actually required.**



SHOWING GREAT EXTENSION OF CAMERA.

LIZARS' "CHALLENGE" DE LUXE CAMERA.—Continued.

SPECIFICATION.

Camera.—Reversing back Camera made of the finest Spanish Mahogany, carefully selected for its soundness, and thoroughly matured. Diagonal rack and pinion focussing movement. The bellows is of special grained varnished leather, with great latitude of adjustment in conjunction with the swing front. The Camera is supplied polished, or covered in hard grained morocco leather.

Shutter.—This is the well known Bausch and Lomb "Unicum."

Lenses.—All the Lenses are carefully tested before being sent out and each is fitted with Iris diaphragm.

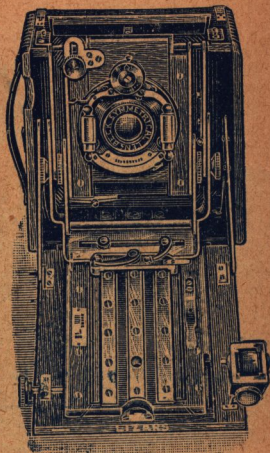
Slides.—Three Bookform Double Dark Slides, manufactured on the latest principle, having rabbeted frames and shutters, tongued in well.

Finder.—The improved brilliant form giving approximately the same view as that shown by the Lens.

Level.—A spirit level is attached to the baseboard close to the finder.

Special features.—The Lens, shutter, and finder, all close up within the Camera, and with focussing screen and hood, combine in one; independent lens panel, rising and falling front; Camera can be instantly opened, and securely fixed at any position by means of quick acting lever; automatic lock, which fixes the front at infinity distance, also a graduated graduated lens seale.

The make and finish of the "Challenge" de Luxe are faultless, and having all the characteristics of British workmanship, which for excellence of quality and reliability cannot be surpassed.



De Luxe Base-board dropped for extreme wide angle Lenses.

PRICE, as per Specification.

DESCRIPTION OF LENS.	4½ × 3½ ½-plate.	5 × 4	6½ × 4½ ½-plate.
Lizars' "Kram" Convertible Three Foci Lens	£7 10 0	£9 0 0	£11 5 0
Aldis Series II., F/6 Lens	8 8 0	9 18 0	12 10 0
Taylor, Taylor and Hobson Lens	8 15 0	10 0 0	12 10 0
Ross' Symmetric Anastigmat Lens	11 5 0	14 0 0
Ross' Homocentric Lens, Series C., F/6.3	11 0 0	12 10 0	15 15 0
Taylor and Hobson "Cooke" Lens, F/6.5	11 0 0	12 10 0	15 15 0
Ross-Goerz Double Anastigmat Lens, Series III., F/6.8 ..	12 0 0	13 15 0	17 0 0
Dallmeyer Stigmatic Lens. F/6	12 10 0	13 10 0	16 10 0

The ½-plate and 5 × 4 are fitted with the No. 2 and the ¾-plate with the No. 3 Dallmeyer Lens.

NOTE.—Any make of Lens and Shutter supplied. Prices on application.

Camera and three Double Book Slides, including fitting customers own Lens and Shutter supplying and fitting View Finder and Scaling	£6 0 0	£7 2 6	£9 5 0
Brass Binding Camera and Three Slides	1 5 0	1 10 0	1 17 6
Extra Double Book Slides	0 9 0	0 9 6	0 10 0
With "Challenge" Focal Plane Shutter built into Camera in place of the "Unicum" Shutter, extra	1 10 0	1 10 0	1 15 0
Extra for the new "Koilos" Shutter in place of "Unicum" ..	0 11 0	0 11 0	..

IMPORTANT.

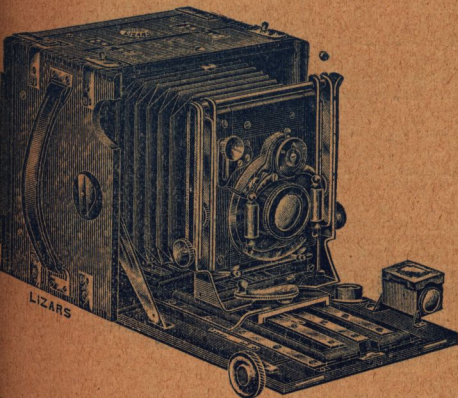
The "CHALLENGE" DE LUXE CAMERA can also be supplied with three double dark slides, with Aluminium Draw-out shutters, at the following reductions on above prices.

¾-plate, £1; 5 × 4, £1 10s.; ½-plate, £1 5s.

Camera and three double dark slides with aluminium draw-out shutters, including fitting customer's own lens and shutter, supplying and fitting view-finder and scaling ..	£5 5 0	£6 5 0	£8 5 0
Extra double dark slides	0 5 0	0 6 6	0 8 0
Solid Leather Case with lock and key, and hand and shoulder straps to hold Camera and six slides ..	0 12 0	0 15 0	1 0 0

The "Challenge" Tropical De Luxe Camera — (Patent).

AN UNQUALIFIED SUCCESS.



Open for ordinary work.

Otherwise these instruments are the same as the specification of the "Challenge" De Luxe Cameras described on the two preceding pages.

Prices as per Specification.

Description of Lens.	$4\frac{1}{4} \times 3\frac{3}{4}$ $\frac{1}{4}$ -plate	5×4	$6\frac{1}{2} \times 4\frac{1}{4}$ $\frac{1}{2}$ -plate.
Lizars' "Kram" Convertible Three Foci Lens	£ s. d.	£ s. d.	£ s. d.
Aldis Lens Series II, F/6	10 0 0	11 10 0	14 15 0
Taylor, Taylor & Hobson Lens	10 18 0	12 8 0	16 0 0
Ross Symmetric Anastigmat Lens	11 5 0	12 10 0	16 0 0
Ross Homocentric Lens, Series C, F/6.3	—	13 15 0	17 10 0
Taylor & Hobson "Cooke" Lens, F/6.5	13 10 0	15 0 0	19 5 0
Ross Gcerz Double Anastigmat Lens, Series III., F/6.8	13 10 0	15 0 0	19 5 0
Dallmeyer Stigmatic Lens, F/6	14 10 0	16 5 0	20 10 0
.. .. .	15 0 0	16 0 0	20 0 0

The $\frac{1}{4}$ -plate and 5×4 are fitted with the No. 2, and the $\frac{1}{2}$ -plate with the No. 3 Dallmeyer Lens
NOTE.—Any make of Lens and Shutter supplied. Prices on application.

Extra for "Koilos" Shutter in place of Unicum in $\frac{1}{4}$ -plate and 5×4 sizes 11/.

	£ s. d.	£ s. d.	£ s. d.
Camera and Three Double Book Slides, including fitting Customer's own Lens and Shutter, supplying and fitting Level, View Finder and Scaling	8 10 0	10 0 0	13 0 0
Extra Double Book Slides, each	0 15 6	0 16 6	0 17 6
Solid Leather Case with lock and key to hold Camera and three Slides	0 12 0	0 15 0	0 18 0
Do. to hold Camera and six Slides	0 12 0	0 15 0	1 0 0
Ischromatic Screen, in form of Cap, with Leather Case	0 2 6	0 2 6	0 3 6
Wide-Angle Lens, interchangeable with the Lens fitted to the Bausch & Lomb Shutter, complete in Leather Case	1 2 6	1 2 6	1 5 0

The "Challenge" Tropical De Luxe Camera

(Continued)

NOTE.—This Outfit can be supplied with Special Cross-Grained Varnished Leather Bellows in place of the Real Russian Leather, at the following reductions:
 $\frac{1}{4}$ -plate, 15s.; 5×4, 20s.; $\frac{1}{2}$ -plate, 25s.

With special cross-grained varnished leather Bellows, in place of the real Russia leather, and three Teak Double Plate Holders in lieu of three Brass-bound Book-form Dark Slides.

Prices, as per Specification.

Description of Lens.	$4\frac{1}{4} \times 3\frac{3}{4}$	5×4	$6\frac{1}{2} \times 4\frac{3}{4}$
	$\frac{1}{4}$ -plate		$\frac{1}{2}$ -plate.
	£ s. d.	£ s. d.	£ s. d.
Lizars' "Kram" Convertible Three Foci Lens	7 15 0	9 0 0	12 0 0
Aldis Lens, Series II., F/6	8 13 0	9 18 0	13 5 0
Taylor, Taylor & Hobson Lens	9 0 0	10 0 0	13 5 0
Ross Symmetrical Anastigmat Lens	—	11 5 0	14 15 0
Ross Homocentric Lens, Series C, F/6.3	11 5 0	12 10 0	16 10 0
Taylor and Hobson "Cooke" Lens, F/6.5	11 5 0	12 10 0	16 10 0
Ross Goerz Double Anastigmat Lens, Series III., F/6.8	12 5 0	13 15 0	17 15 0
Dallmeyer Stigmatic Lens, F/6	12 15 0	13 10 0	17 5 0

The $\frac{1}{4}$ -plate and the 5×4 are fitted with the No. 2 and the $\frac{1}{2}$ -plate with the No. 3 Dallmeyer Lens.
NOTE.—Any make of Lens or Shutter supplied. Prices on application.

Camera and three Double Plate Holders, including fitting customer's own Lens and Shutter, supplying and fitting Level, View Finder and Scaling	6 10 0	7 15 0	10 7 6
Extra Double Plate Holders, each	0 5 0	0 6 6	0 10 0

For Additional Extras see previous page.

LIZARS' "KRAM" CONVERTIBLE LENS.

F8. (3 Foci.)

This Lens has been introduced for use on the "Challenge," De Luxe, Triple Extension or similar Cameras; the combination being of different focal lengths, and so combining three lenses in the one instrument.

The advantages of this construction are considerable, as it is possible to materially vary the amount of subject included in the picture by using either the whole lens or the back or front combinations the comparative focal lengths of these latter being approximately $1\frac{1}{2}$ and $2\frac{1}{4}$ times that of the complete Lens.

The single combinations will also be found very useful for portraiture, the result obtainable, especially for large heads, being much superior to that given by the whole lens.

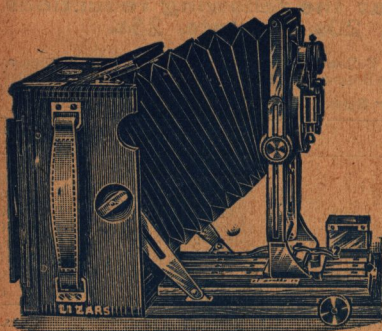
The "Kram" Convertible Lens is rectilinear, works at F/8, and produces good definition at a large aperture, and is capable of covering the plate well, even when the front is raised, considerably. The single combination may be thoroughly relied on and the lens itself is one that can be well recommended.

PRICES.

No.	To Cover.	Approximate Focal Length.			In Mount with 1-in. Diaphragm.	Mounted in Unicum Shutter.	
		Whole.	Back.	Front.		£ s. d.	£ s. d.
1	$4\frac{1}{4} \times 3\frac{3}{4}$	$5\frac{1}{2}$ in.	9 in.	12 in.	£ 1 15 0	£ 3 0 0	
2	5 × 4	$6\frac{1}{2}$ in.	11 in.	$14\frac{1}{2}$ in.	2 0 0	3 5 0	
3	$6\frac{1}{2} \times 4\frac{3}{4}$	9 in.	13 in.	20 in.	2 10 0	3 15 0	



Lizars' "Challenge" Minor De Luxe Camera.



De Luxe Camera showing enormous Front Rise.

A Camera of not quite the same pretensions as the "De Luxe," although practically possessing all the universal movements of the Swing Front. These include ENORMOUS RISE, GREAT EXTENSION, TILTING OF THE LENS TO ANY DEGREE UPWARDS OR DOWNWARDS AS WELL AS THE EXTENT TO WHICH IT CAN BE SET BACK FOR USE WITH SHORT FOCUS LENSES. This instrument will appeal to many who do not desire the great range of movements which are included in the "De Luxe" (described on preceding pages), yet possessing many of the important features of that instrument.

"Minor De Luxe" Camera, complete with Unicum Shutter, Brilliant View Finder, Spirit Level, Solid Leather Case, three Double Dark Slides with Aluminium Draw-out Shutters and Focussing hood.

PRICES.

DESCRIPTION OF LENS.	4½×3½ ½-Plate.		5×4		6½×4½ ¼-Plate.	
	£	s. d.	£	s. d.	£	s. d.
"Challenge" Beck Symmetrical Lens	5	10 0	6	5 0	7	15 0
Lizars' "Kram" Convertible Three Foci Lens	6	0 0	7	0 0	9	10 0
Aldis Series II., F/6 Lens	6	18 0	7	18 0	10	15 0
Taylor, Taylor and Hobson Lens	7	5 0	8	0 0	10	15 0
Ross' Symmetric Anastigmat Lens	9	5 0	12	5 0
Ross' Homocentric Lens, Series C., F/6.3	9	10 0	10	10 0	14	0 0
Taylor and Hobson "Cooke" Lens, F/6.5	9	10 0	10	10 0	14	0 0
Ross-Goerz Double Anastigmat Lens, Series III., F/6.8	10	10 0	11	15 0	15	5 0
Dallmeyer Stigmatic Lens F/6	11	0 0	11	10 0	14	15 0

The ½-plate and 5×4 are fitted with the No. 2, and the ¼-plate with the No. 3 Dallmeyer Lens.
Note.—Any make of Lens and Shutter supplied. Prices on application.

Complete Set excepting Lens and Shutter, but including fitting customer's own Lens and Shutter, supplying and fitting	4	10 0	5	5 0	6	12 6
View Finder and Scaling	0	4 0	0	5 0	0	6 6
Extra Double Slides, each	1	5 0	1	10 0	1	17 6
Brass Binding Camera and three Slides

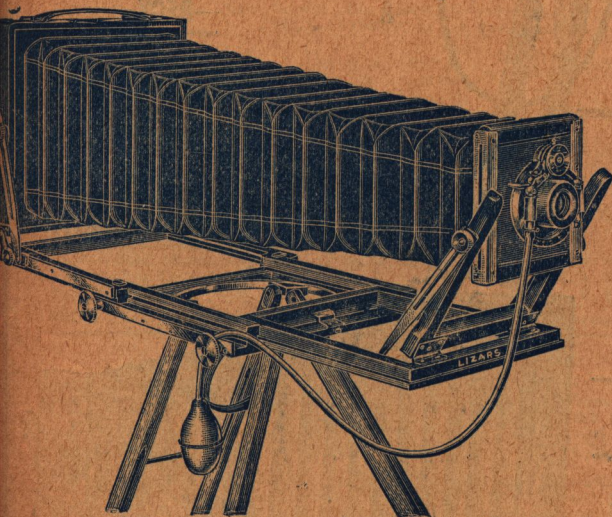
SPECIAL.—Three Book Form Double Dark Slides will be supplied, in place of those with Aluminium Draw-out Shutters, at 10/- extra for ½-plate and 5×4, and 15/- extra for ¼-plate.

Lizars' "Challenge" Triple Extension Outfit.

—THE OUTFIT COMPRISES—

Half-Plate Camera, Rapid Rectilinear Lens Roller-Blind Time and Instantaneous Shutter, 3-fold Ash Stand and BOOK-FORM DOUBLE DARK SLIDE, for

65/0.



SPECIFICATION.

Camera.—Made of the finest Spanish Mahogany with all practical movements, including triple extension of 24 inches. The extensions are actuated by rack and pinion; the back moves forward on brass guides for the use of Wide Angle lenses. The camera is also provided with square panel front (detachable), swing back, reversing back, extensive rising and swing front, and with substantial turntable in base.

Slide.—Double Book-Form, with rabbeted frames, also triple jointed hinge, rabbeted shutters, which is a great preventative from light being admitted in the event of the hinge-cloth getting worn.

Lens.—Is Rapid Rectilinear, of fine quality, working at F/8, and fitted with Iris diaphragm.

Shutter.—Is of the well-known roller-blind pattern, which works either time or instantaneous from a 15th to a 60th part of a second, with speed indicator of the latest form, and pneumatic release. The shutter forms part of the front of the Camera, but can be detached when desired.

Stand.—Is 3-fold, with sliding bottom joint, thoroughly well made, compact and perfectly rigid.

PRICE AS SPECIFICATION, 65/0 NETT.
IN 1/2-PLATE SIZE ONLY,

With Bausch and Lomb "Unicum" Shutter in place of Roller-Blind Shutter	...	68/6 nett
With Beck Symmetrical Lens and Roller Blind or Unicum Shutter	..	70/0 nett
With "Challenge" Convertible 3-foci Lens in Unicum Shutter	..	75/0 nett
Extra Book-Form Slides, each	..	8/0

LIZARS' "Special Challenge"**Stand Cameras.**

The "Special Challenge" series of Cameras are in every way identical to the specification of the "New Challenge" described on the following page, with the exception of the Lenses and Shutters.

These Cameras are supplied with

—BECK—

SYMMETRICAL LENS

AND

Thornton-Pickard

Time & Instantaneous Shutter.

OR WITH THE

Beck - - - - -
Symmetrical Lens

AND

Bausch and Lomb
Unicum Shutter.

The outfit consists of Camera, book-form double dark slide, Beck Symmetrical Lens, Thornton-Pickard or Bausch and Lomb "Unicum" Shutter and three-fold stand.

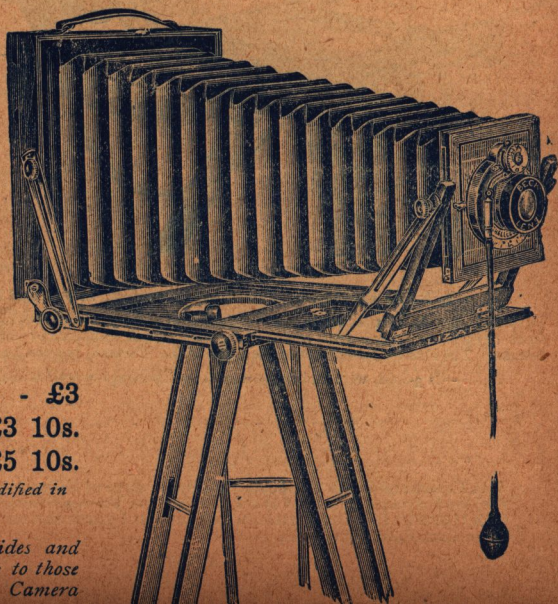
*Quarter-Plate size - £3

Half-Plate size £3 10s.

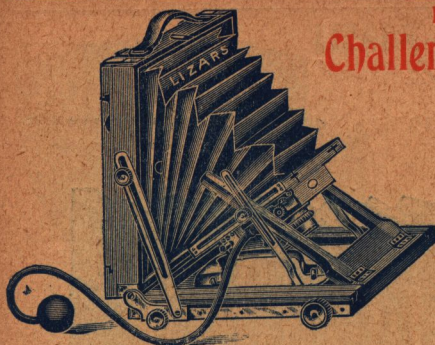
Whole-Plate ,, £5 10s.

*The $\frac{1}{4}$ -Plate is slightly modified in construction.

The prices of extra slides and carrying cases are similar to those of the "New Challenge" Camera



LIZARS' "NEW Challenge" Stand Camera.



NEW SWING FRONT.

Stand is 3-fold with sliding bottom joint, thoroughly well made, and perfectly rigid.

PRICE OF OUTFIT, as per Specification.

Particulars.	Size $4\frac{1}{2} \times 3\frac{1}{4}$ $\frac{1}{2}$ -plate.		5×4 and $6\frac{1}{2} \times 4\frac{3}{4}$ $\frac{1}{2}$ -plate.		$8\frac{1}{2} \times 6\frac{1}{2}$ $\frac{1}{2}$ plate.		10×8		12×10		15×12	
	£	s. d.	£	s. d.	£	s. d.	£	s. d.	£	s. d.	£	s. d.
Complete Outfit as Specification	£12	15 0	£3	5 0	£5	2 6	£9	9 0	£11	11 0	£14	0 0
Extra Double Book Slides, each	0	8 0	0	8 0	0	12 6	1	0 0	1	4 0	1	10 0
Camera, with Turntable only ..	£1	8 5	1	12 0	2	12 6	4	10 0	5	5 0	6	15 0
Camera with Turntable and One Double Book Slide only	£1	16 6	2	0 0	3	5 0	5	10 0	6	9 0	8	5 0
Camera with Turntable and 3-fold Tripod only	£1	15 6	2	0 0	3	3 6	5	15 0	6	10 0	8	5 0
Camera, with Turntable, Double Book Slide, 3-fold Tripod and Roller Blind Shutter only ..	£12	10 0	2	16 6	4	8 0	7	9 0	8	12 0	10	16 0
Brass Binding Camera	0	13 0	0	15 0	0	15 6	1	0 0	1	3 0	1	6 0
Brass Binding Slides, each ..	0	4 3	0	5 0	0	5 6	0	6 0	0	6 0	0	7 6

†Note. The $\frac{1}{2}$ -plate Camera is slightly modified in form to close more compactly and has no turntable.

LIZARS' "CHALLENGE" COMBINATION STAND CAMERA.

SPECIFICATION.

Camera, finished in the best style of workmanship, the bellows is varnished cross-grained leather. The back of the Camera moves forward by means of a rack and pinion, for the use of wide angle Lenses. The baseboard is also extended by rack and pinion, thus giving the advantage of rack focussing for the whole extension. A reversing back, swing back, swing front and Turntable are also fitted.

Slide, double book form, with rabbeted frames also triple jointed hinge rabbeted shutters.

Lens is of the rapid rectilinear form, works at $F/8$, and fitted with Iris diaphragm.

Shutter, Thornton-Pickard behind Lens, time and instantaneous, with speed indicator.

Stand is three-fold, with sliding bottom joint and spring clips.

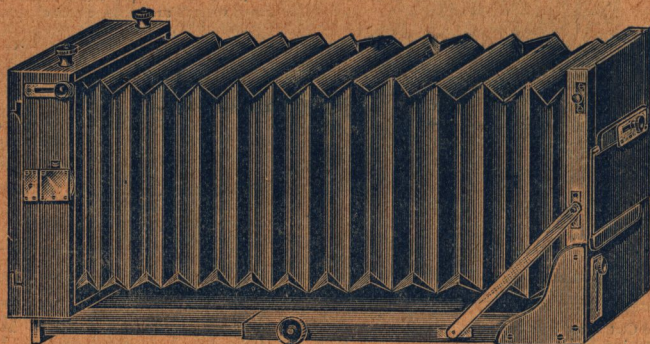
Case is of the best waterproof canvas, with shoulder and hand strap attached.

PRICE OF OUTFIT, as per Specification.

Particulars.	$6\frac{1}{2} \times 4\frac{3}{4}$ $\frac{1}{2}$ -plate.		$8\frac{1}{2} \times 6\frac{1}{2}$ $\frac{1}{2}$ plate.	
	£	s. d.	£	s. d.
Complete Outfit as specification	5	0 0	7	10 0
Extra Double Book Slides, each	0	10 0	0	15 0
Camera with Turntable only	2	10 0	4	5 0
Camera with Turntable and Double Book Slide only	3	0 0	5	0 0
Camera with Turntable and Three-fold Tripod only	2	19 0	4	18 6
Camera with Turntable, Double Book Slide, Three-fold Tripod and Thornton-Pickard Shutter only	4	7 0	6	4 6
Camera with Turntable, Double Book Slide, Three-fold Tripod Thornton-Pickard Shutter, and Mailcloth Waterproof Case only	4	10 0	6	9 0
Extra Lens Panels to fit Shutter, each	0	1 6	0	1 6

LIZARS'

"Challenge" Square Bellows Camera.



Double Extension. Reversing Back.

This model is designed to provide a camera suitable in every way for Amateur or Professional use. It is equally serviceable for work in the Field, or Studio, and also for Railway, Shipyard and Engineering Photographic work.

The cross-grained varnished Leather Bellows being square, makes the Camera eminently adapted for long or short focus lenses.

The extending baseboard is actuated by solid diagonal rack and pinion, ensuring a steadiness and smoothness of action, not obtainable with the ordinary form of focussing.

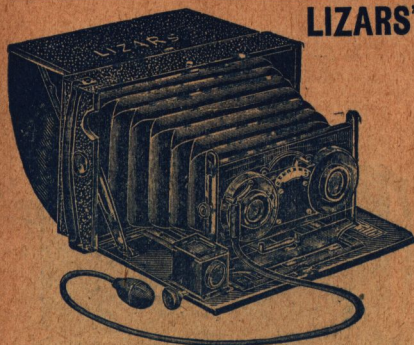
A Reversing Back enabling pictures to be taken on either the vertical or horizontal way of the plate is fitted, and the swing back has double motion, this latter can be arranged with rack and pinion adjustment if desired, at a slight extra cost.

The front of the camera has both rising and cross movements, the lens panel being of large size so as to ensure perfect rigidity when using heavy lenses.

The workmanship is of the highest order and substantial, and the materials used throughout of the finest quality.

Camera and Book Form Double Dark Slides are made from selected Spanish Mahogany, and are handsomely finished.

Particulars.	$6\frac{1}{2} \times 4\frac{1}{2}$ $\frac{1}{2}$ plate.	$8\frac{1}{2} \times 6\frac{1}{2}$ $\frac{1}{2}$ plate.	10 X 8.	12 X 10.	15 X 12.
Camera and 3 Book Form Double Dark Slides ...	7 10 0	10 0 0	11 0 0	13 0 0	16 15 0
Extra Double Book Form Double Dark Slides each...	0 17 6	1 0 0	1 2 6	1 10 6	1 15 0
Brass Binding Camera only	0 15 0	0 15 0	1 0 0	1 7 6	1 12 6
Brass Binding Dark Slides, each	0 5 0	0 5 0	0 6 0	0 6 0	0 7 6
Three Fold Tripod Stand	1 0 0	1 5 0	1 10 0	1 15 0	2 0 0
Rack and Pinion to Double Swing Back	0 10 0	0 10 0	0 15 0	0 15 0	1 0 0
Solid Leather Travelling Case with Spring Lock, to hold Camera and 3 Slides	1 10 0	1 15 0	2 5 0	3 5 0	4 10 0
Camera and 3 Slides in Teakwood in place of Mahogany, extra	1 0 0	1 10 0	2 0 0	2 10 0	3 0 0



LIZARS' "Challenge" Model B Stereoscopic Plate Camera

FOR PLATES $6\frac{3}{4} \times 3\frac{1}{4}$

DIMENSIONS OF CAMERA WHEN CLOSED:

$8\frac{1}{2} \times 4\frac{5}{8} \times 2\frac{3}{8}$

This Camera has been constructed in two forms—namely, with fixed division in bellows, and with loose division. With the fixed division, pictures either Stereoscopic or Lantern Slide size ($3\frac{1}{4}$ inch square), two on one plate, may be produced, the latter being obtained by capping the one lens and making the exposure with the other. The instrument with the loose division will produce either Stereoscopic Pictures or, by the removal of the division, the Artistic Landscape or Panel Shape, $6\frac{3}{4} \times 3\frac{1}{4}$. For the Landscape size it is necessary to have an extra front panel and a $\frac{1}{2}$ -plate lens, which take the place of the stereo shutter and lenses.

SPECIFICATION.

Camera.—Made in finest Spanish mahogany, either polished or covered in best quality hard-grained leather. Focussing hood, and leather bellows.

Shutter.—The famous Bausch & Lomb, which works either time or instantaneous. The two shutters are ever set, and are operated simultaneously by one pneumatic or trigger release.

Slides.—Three in number double, and of the solid form, with aluminium draw out shutters.

Lenses.—A pair of fine quality rapid rectilinear lenses, with Iris diaphragms, controlled by one lever.

Finder.—The new brilliant series, and set as near as possible to show the same view as that given by the lenses.

Finish.—This is carried out with great exactness, and the pictures are focussed from 6 feet to infinity on a carefully graduated scale.

Special Points.—Camera, Lenses, Shutter, Finder, and Focussing Hood all close up together. Rising front and swing back. Focussed by diagonal rack and pinion. Admirably adapted as a Stand Camera, for which purpose bushes are provided. Instantly opened, and immediately set at infinity by the new and improved pull-out front, with quick clamping action.

PRICE as per Specification.

DESCRIPTION OF LENSES.	Fixed Division in Bellows.	Loose Division in Bellows.
	£ s. d.	£ s. d.
Fitted with accurately paired Rapid Rectilinear Lenses F/8	5 10 0	5 15 0
Aldis Lenses, Series II., F/6	8 10 0	8 15 0
Taylor, Taylor & Hobson Lenses	9 12 6	9 17 6
Ross' Homocentric Lenses, Series C, F/6.3	13 12 6	13 17 6
Taylor & Hobson "Cooke" Lenses, F/6.5	13 12 6	13 17 6
Ross-Goerz Double Anastigmat Lenses, Series III., F/6.8	15 15 0	16 0 0

NOTE.—Any make of Lenses supplied. Prices on application.

	each	£ s. d.
Extra Front Panels for Camera with loose division in Bellows	0 2 0
Extra Double Dark Slides	0 8 0
Book-Form Double Dark Slides	0 12 6
"Challenge" Changing Box to carry 6 Plates, with leather bag	1 5 0
Solid Leather Case, with lock, hand and shoulder straps, lined baize, to hold Camera and three Slides	0 12 0
Stiffened Mailcloth Canvas Case, lined baize, with hand and shoulder straps	0 8 0
Limp Mailcloth Canvas Case, lined baize, with hand and shoulder straps	0 6 0

NOTE.—A Time Exposure Valve can be fitted to this Shutter, giving the indicated speeds exceedingly accurate.

SPECIAL.—This Camera is also supplied with the Bausch & Lomb New Variable Speed Automatic Stereoscopic Shutter at an additional cost of £2 0 0.

LIZARS' "CHALLENGE" MODEL B STEREOSCOPIC FILM AND PLATE CAMERA.

The Specification of this Camera is similar in every respect to the "CHALLENGE" Model B Stereoscopic Plate Camera described on the preceding page.



For Daylight Loading Films or for Plates, $6\frac{1}{2} \times 3\frac{1}{2}$.
Dimensions of Camera when closed, $11 \times 4\frac{1}{2} \times 2\frac{1}{2}$.

PRICES.

DESCRIPTION OF LENSES.	Fixed Division in Bellows.			Loose Division in Bellows.		
	£	s.	d.	£	s.	d.
Fitted with accurately paired Rapid Rectilinear Lenses, F/8	5	10	0	5	15	0
Aldis Lenses, Series II., F/6	8	10	0	8	15	0
Taylor, Taylor & Hobson Lenses	9	12	6	9	17	6
Ross-Homocentric Lenses, Series C, F 6/3	13	12	6	13	17	6
Taylor & Hobson "Cooke" Lenses, F 6'5	13	12	6	13	17	6
Ross' Goerz Double Anastigmat Lenses, Series III., F/6'8	15	15	0	16	0	0

NOTE.—Any make of Lenses supplied. Prices on application.

	£	s.	d.	
Extra Front Panels for Camera with loose division in bellows	each	0	2	0
Stand Attachment for taking upright pictures		0	5	0
Plate Adapter, Focussing Screen with Hood and one double dark slide with improved light traps, and Aluminium Draw-out Shutters	each	0	16	6
Extra Double Dark Slides	each	0	8	0
Book-Form Double Dark Slides	each	0	12	6
"Challenge" Changing Box to carry six plates, with leather bag		1	5	0
Solid Leather Case, with hand and shoulder straps, to hold Film Camera only		0	12	0
Stiffened Mailcloth Canvas Case, lined baize, with hand and shoulder straps		0	8	0
Limp Mailcloth Canvas Case, lined baize, with hand and shoulder straps		0	6	0
Daylight Loading Films ($3\frac{1}{2} \times 3\frac{1}{2}$ spool), 12 exposures		0	2	6

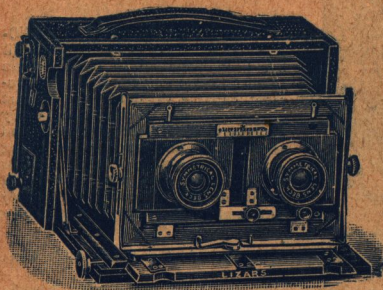
NOTE.—Only Six Stereoscopic or Panel Pictures can be obtained from the spool, every odd number (1, 3, 5, 7, 9 and 11) indicates film in position.

These Cameras can be fitted with Lenses by almost every maker. Prices on application.

The attachment (1) to bring the film back to position if overwound, (2) to put a tension on the film, (3) and to wind the film out of the way in the event of the worker desiring to use a plate, can be fitted to the Stereoscopic Film and Plate Camera, Price 7/6.

SPECIAL.—See Note on preceding page regarding Time Exposure Valve, and Bausch & Lomb New Variable Speed Automatic Stereoscopic Shutter.

LIZARS' "CHALLENGE" MODEL 1 B STEREOSCOPIC CAMERA.



This Stereoscopic Camera, of the very best workmanship, is for plates $6\frac{3}{4} \times 3\frac{1}{4}$, with loose division in bellows and similar in design to the Model B Stereoscopic Plate Camera. It differs only so far as the shutter, front, and slides are concerned, and with these alterations and extra movements, it may appeal to some stereoscopic workers as more suitable for this particular class of photography. The Shutter is the "Challenge" Focal Plane or the new model Goerz-Anschutz Focal Plane working from $1/25$ th to

$1/100$ th of a second, or the Thornton-Pickard Behind Lens with adjustable centres, and is built into, and forms part of the camera.

The Focal Plane Shutters are fitted with quick wind and Speed Indicator.

The front (as shown in illustration) is constructed to give various separations to the lenses, and is fitted with a carefully graduated scale. The panel is detachable.

The three slides supplied are of the best quality Book-form, tongued in well, mitres cross-keyed on surface, rabbeted Frames and Shutters, and with automatic closing springs and automatic Stop Springs to shutters.

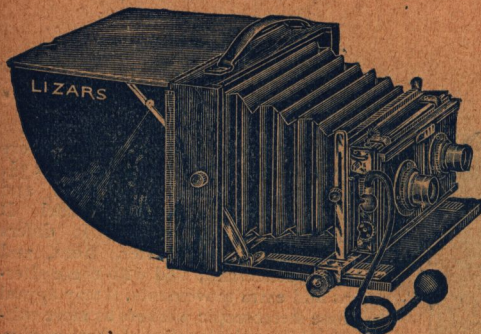
PRICES, as per Specification, Polished or Leather-covered.

DESCRIPTION OF LENSES.	With Thornton-Pickard Behind-Lens Shutter.	With "Challenge" Focal Plane Shutter.	With Goerz Focal Plane Shutter.
Fitted with accurately paired Beck Symmetrical Lenses, F/8	£8 10 0	£9 0 0	£10 10 0
Aldis Lenses, Series II., F/6	10 0 0	10 10 0	12 0 0
Taylor, Taylor & Hobson Lenses	11 2 6	11 12 6	13 2 6
Ross Homocentric Lenses, Series C., F/6.3	15 2 6	15 12 6	17 2 6
Taylor & Hobson "Cooke" Lenses, F/6.5	15 2 6	15 12 6	17 2 6
Ross-Goerz Double Anastigmat Lenses, Series III., F/6.8	17 5 0	17 15 0	19 5 0
Dallmeyer Stigmatic Lenses, F/6	18 5 0	18 15 0	20 5 0

NOTE.—Any make of Lenses supplied. Prices on application.

Camera, Shutter and three Book-form Double Dark Slides, including fitting of customer's own lenses, supplying and fitting View Finder and Scaling	7 10 0	8 0 0	9 10 0
Extra Book-form Double Dark Slides. each	0 12 6	0 12 6	0 12 6
"Challenge" Changing Box to carry six plates with leather bag	1 5 0	1 5 0	1 5 0
Solid Leather Case, with hand and shoulder straps, lock and key, to hold Camera and three Slides	0 15 0	0 15 0	0 15 0
Extra Front Panels for Camera, each	0 3 6	0 3 6	0 3 6
Brass-binding Camera and three Slides	1 17 6	1 17 6	1 17 6
Dimensions of Camera when closed	$8\frac{1}{2} \times 5\frac{1}{2} \times 3\frac{1}{2}$	$8\frac{1}{2} \times 5\frac{1}{2} \times 3\frac{1}{2}$	$8\frac{1}{2} \times 5\frac{1}{2} \times 3$

LIZARS' "CHALLENGE" Stereoscopic or Half-plate Camera.



The "CHALLENGE" STEREO-SCOPIC or HALF-PLATE CAMERA has been designed to fulfil certain essential requirements, *i.e.*, an instrument capable of doing the highest quality of work, combining every necessary movement, portable and serviceable, and capable of doing either Stereoscopic Photographs or of half-plate size, the latter being produced by removing in a very simple way the division in the bellows.

SPECIFICATION.

Camera.—Either polished or covered in Morocco leather, Automatic Catch for Slide when entered in Camera, leather Bellows and Focussing Hood.

Shutter.—This forms the front of the Camera and is the Thornton-Pickard best quality, it works either time or instantaneous, and has a speed Indicator attached. The Shutter has adjustable centres, and an extra panel is supplied with the outfit to use with a single Lens when making half-plate exposures.

Slides.—Three Double book form, tongued in well, Mitres cross-keyed on surface and with Rabbed Frames and Shutters. Will take two sizes of plates, $6\frac{1}{2} \times 4\frac{1}{2}$ and $6\frac{3}{4} \times 3\frac{1}{4}$.

Lenses.—All the Lenses are carefully tested and selected, and are fitted with Iris Daphragms.

Finder.—Of the New Brilliant Series, and gives approximately the same picture as that shown by the Lenses.

Special Features.—Camera, Lenses, and Focussing Hood all fold up together. Rising Front and Swing back. Adapted for Horizontal and Vertical Pictures. Scale for various distances Automatic Catch which locks the Front at infinity distance. The usual focussing arrangement is provided and actuated by diagonal rack and pinion.

PRICE, as per Specification.

Fitted with accurately paired Beck	Ross Homocentric Lenses, Series C,	
Symmetrical Lenses, F/8	F/6.3	£16 5 0
Aldis Lenses, Series II., F/6	Ross Goerz Double Anastigmat Lenses,	
Taylor, Taylor & Hobson Lenses.. .. .	Series III., F/6.8	18 7 6
Taylor & Hobson "Cooke" Lenses, F/6.5	Dallmeyer Stigmatic Lenses, F/6	19 7 6
	For Camera and Shutter only	£7 0 0
For Camera, Shutter and three Book-Form Double Dark Slides, including fitting of customer's own lenses, supplying and fitting view finder and scaling		£9 0 0
	For extra Double Book Slides, each	£0 10 0
Solid leather Carrying Case with lock, hand and shoulder straps to hold Camera and 3 Slides,		price £0 18 0

LIZARS' "CHALLENGE" Reversing Back Stereoscopic or Half-Plate Camera.

This is identical in every respect with the description given above, with the additions of Reversing Back and extra extension.

PRICES, as per Specification.

Fitted with accurately paired Beck	Ross Homocentric Lenses, Series C,	
Symmetrical Lenses	F/6.3	£17 5 0
Aldis Lenses, Series II., F/6	Ross-Goerz Double Anastigm	
Taylor, Taylor & Hobson Lenses	Lenses, Series III., F/6.8	19 7 6
Taylor & Hobson "Cooke" Lenses F/6.5	Dallmeyer Stigmatic Lenses, F/6	20 7 6
For Camera and Shutter only		£8 0 0
For Camera, Shutter and three Book-form Double Dark Slides, including fitting of customer's own Lenses, supplying and fitting View Finder and Scaling		10 0 0
Extra Double Book Slides, each		0 10 0
Solid leather Carrying Case, with lock, hand and shoulder straps, to hold Camera and 3 Slides		1 0 0

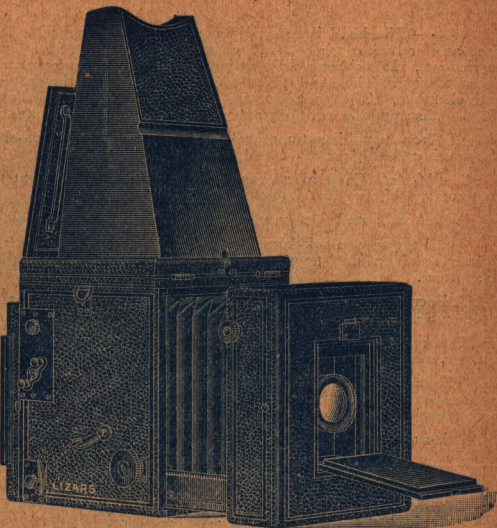
NOTE.—These Cameras can be fitted with Lenses of almost every Maker. Prices on application.

LIZARS' "CHALLENGE" DE LUXE REFLEX CAMERA.

The "Challenge" De Luxe Focal Plane Reflex Camera is without doubt the most perfect instrument of the Reflex pattern that has ever been introduced. The greatest thought and care has been exercised to obtain efficiency and compactness in the simplest possible form, and these efforts have been in every way successful. The camera is built for practical use, and the material throughout is of the highest order; the workmanship is of the finest description, and although in a compact form, rigidity and strength have been in no way sacrificed.

It is particularly suitable for picture studies, portraiture, press work and sporting subjects.

The difficulty of estimating distances is entirely overcome in this type of camera, as the finder, being full size, shows the exact view with the same definition as it will appear on the negative, either horizontally or vertically, and can be focussed right up to the moment of exposure.



The Lenses listed have the scales of apertures engraved on the face of flange collar, and are visible and adjustable from the outside.

A Shoulder Strap is fitted to the camera, which leaves both hands free for manipulation. The focussing gear being on the right and the release button on the left, the hands are consequently always in position at the required moment.

Focussing is regulated by diagonal rack and pinion, insuring exceedingly easy and fine adjustment.

The Rising and Falling Frown is actuated also by rack and pinion action.

The Reflecting Mirror is silvered on the surface and specially treated to preserve the polish, and shows the image absolutely free from distortion.

The Lever for setting is in close proximity to the focussing pinion head, as shown in illustration, and the action of setting and releasing is perfectly smooth and silent.

The cone, or chamber containing the mirror, is absolutely light tight, so that there is no possible chance of stray light getting at the sensitive plate should the shutter of the dark slide remain open for some little time.

Shutter—This is the "Challenge" Focal Plane, which is operated either with the finger or the Antinous non-perishable release. It is fitted with a quick wind and set with a half turn of the setting handle, so that there is practically no wasted time in preparing for the next exposure. The speeds of the shutter are from $1/10$ th to $1/1000$ th part of a second, in addition to time exposures as long as desired.

All adjustments are made from the outside, the width of slit or opening of blind is recorded on the dial on the left hand of camera, and this, combined with the tension of the shutter, as tabulated on the speed plate, shows at a glance the rate at which the shutter is travelling without the necessity of any complicated calculation.

A revolving back is fitted to the Camera, so that the plate can be changed from the horizontal to the vertical position with the greatest of ease, and in the least possible time. It is not necessary to close the shutter of the slide if you desire to change from one position to another.

LIZARS' "CHALLENGE" DE LUXE REFLEX CAMERA.—continued.

Hood.—The hood is a special feature in this instrument. It stands $8\frac{1}{2}$ in. high in the $\frac{1}{4}$ -plate size, and creates a perfect dark chamber, so that the finest and most accurate focussing can be carried out. It is automatic in rising and automatic in closing, and is undoubtedly the most perfect hood existing. The hood is also hinged for access to the ground glass for the purpose of dusting and cleaning. The ground glass is easily removed, so that the mirror can also be dusted. **Note.**—this should be carefully and gently done to avoid damage to the surface of the mirror.

The front panel is automatically opened, and acts as a sun-shade; when the camera is not in use the lens is carefully protected and free from dust and injury.

The $\frac{1}{4}$ -plate Camera extends to $10\frac{1}{2}$ ins., and at that extension has a solidity which makes it particularly suitable for telephotography.

Bellows is of real leather, specially cross-grained, varnished, with truncated corners.

There are three Book-form Double Dark Slides supplied with the Camera. They have rabbeted frames and shutters, tongued in well, with automatic closing springs and automatic stop springs to shutters.

A Focussing Screen with hood or protector is also fitted to the back, so that the Camera may be used on a stand equally as well as for hand work.

The exposures are obtained with a sensitiveness of pressure for the release of the mirror and shutter, which minimises the risks of vibration when taking a picture.

The many points of vantage cannot be adequately expressed, but to any one who has been accustomed to handling a camera of this type the points of perfection will appeal to them as a revelation in camera construction.

Price as per Specification, with three Best Quality Book-form Double Dark Slides.

Particulars of Lens.	$4\frac{1}{2} \times 3\frac{1}{4}$ ($\frac{1}{4}$ -plate)	5×4	$6\frac{1}{2} \times 4\frac{3}{4}$ ($\frac{1}{4}$ -plate)
Aldis Lens, Series II., F/6	—	£17 5 0	£21 10 0
Ross Homocentric Lens, Series C., F/6'3	£15 10 0	7 $\frac{1}{4}$ inch Lens 19 10 0	8 $\frac{1}{2}$ inch Lens 24 0 0
Taylor & Hobson "Cooke" Lens, Series III., F/6'5	6 inch Lens 16 0 0	7 inch Lens 20 0 0	8 $\frac{1}{2}$ inch Lens 23 15 0
Zeiss "Tessar" Lens, F/6'3	6 inch Lens 16 15 0	7 $\frac{1}{4}$ inch Lens 21 0 0	8 $\frac{1}{2}$ inch Lens 25 10 0
Ross Homocentric Lens, Series B, F/5'6	6 inch Lens 17 0 0	7 inch Lens 21 0 0	8 $\frac{1}{2}$ inch Lens 25 10 0
Zeiss "Unar" Lens, Series 1B, F/5.. .. .	6 inch Lens 17 0 0	7 inch Lens —	8 $\frac{1}{2}$ inch Lens 26 0 0
Goerz Double Anastigmat Lens, Series III., F/6'8	6 inch Lens 17 5 0	21 5 0	8 $\frac{1}{2}$ inch Lens 25 15 0
Zeiss "Protar" Convertible 2-Foci Lens, Series VIIA, F/6'3	6 inch Lens 20 15 0	7 inch Lens 23 15 0	8 $\frac{1}{2}$ inch Lens 28 15 0
	No. 7. $6\frac{1}{2}$ in. Lens	No. 7. $6\frac{1}{4}$ in. Lens	No. 10. 8 in. Lens

Lenses by other makers.

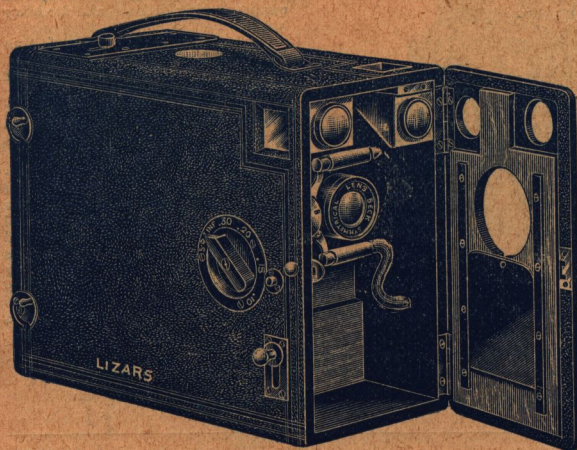
Prices on application.

Camera and three Book-form Double Dark Slides	12 0 0	15 0 0	18 0 0
Extra Book-form Double Dark Slides, each ..	0 9 0	0 9 6	0 10 0
"Challenge" Changing Box with leather bag, for 6 plates	0 18 6	1 2 6	1 5 0
Daylight Cartridge Film Holder, including fitting to Camera	1 3 0	1 3 0	1 11 0
Solid Leather Case, with lock and key, hand and shoulder straps, to hold Camera and three slides	1 2 0	1 7 6	1 12 6

Customers' own Lenses fitted from 5/0 to 10/0 extra.
Size of $\frac{1}{4}$ -plate Camera only, $7\frac{3}{4} \times 7\frac{1}{4} \times 5\frac{3}{4}$.

LIZARS' "Challenge" Focussing Magazine Cameras.

42/-, 60/- & 70/-.



THE "Challenge" Focussing Magazine Cameras are thoroughly well-made of the best seasoned material and carry 12 plates or 24 Films.

The changing arrangement is simple and efficient, with an automatic indicator showing the number of plates exposed. An important feature in connection with this Changer is that the Sheaths may be inserted in any order.

The Cameras are fitted with the latest form brilliant view finders, showing the

image the correct way up. Focussing is actuated by rack and pinion, and the various distances at which the lens is in focus, are accurately engraved on a disc on the outside. Two bushes are fitted for the horizontal and vertical ways of the picture.

- | | | | |
|----------------------|--|------------------|----------------------------|
| †No. 1 MODEL. | Fitted with Superior Quality Rapid Rectilinear Lens working at F/8, and Bausch & Lomb "Simplex" Automatic Shutter, giving time and Instantaneous exposures.
Complete for $\frac{1}{4}$ -plates ($4\frac{1}{2} \times 3\frac{1}{4}$) | | 42/- |
| No. 2 MODEL. | Fitted with "Beck" Symmetrical Lens F/8, with Iris diaphragm, and the well-known Bausch & Lomb "Unicum" Shutter giving exposures to $\frac{1}{100}$ th of a second.
Complete for $\frac{1}{4}$ -plates ($4\frac{1}{2} \times 3\frac{1}{4}$) | | 60/- |
| No. 3 MODEL. | Fitted with "Beck" Symmetrical Lens, and Bausch & Lomb Unicum Shutter Superior finish throughout.
Complete for $\frac{1}{4}$ -plates ($4\frac{1}{2} \times 3\frac{1}{4}$)
" " " 5 x 4 plates |
... .. | 70/-
95/- |
| | (Also fitted with Lenses of other makes). | | |
| Extras. | Best Limp Canvas Case, with Shoulder Strap.. | | 4/- |
| | Solid Leather Case, with Shoulder Strap | | 8/6 |

†This model is slightly modified in the focussing arrangement.)

Lizars' "Challenge" Hand Camera.

Model C.



Specification.

Camera.—Either polished or covered in Morocco leather, best quality leather bellows, and focussing hood.

Shutter.—Is the famous Bausch & Lomb Unicum.

Finder.—Latest improvement of the new brilliant form.

Slides.—Three double book form, on the latest principle; tongued in well; and with rabbeted frames and Shutters.

Special Features.—Camera, lens, finder, and focussing hood all fold up together; rising and cross front for horizontal and vertical pictures; swing back; instantly opened and front pulled out on brass guides, and securely fixed at any position with quick action clamping

screw; automatic catch which locks front at the infinity distance; the usual focussing arrangement is provided and actuated by diagonal rack and pinion. Scaled for various distances; as a stand Camera it is perfect.

Finish.—Most beautiful work throughout, with great exactness.

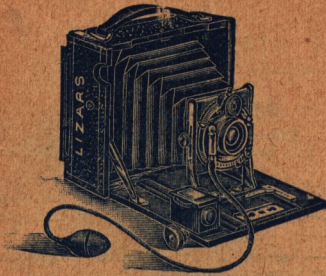
Lenses.—All the lenses supplied with these Cameras are carefully selected and tested.

PRICE as per Specification.

Fitted with	Size		
	$\frac{1}{4}$ -plate $4\frac{1}{4} \times 3\frac{1}{4}$	5×4	$\frac{1}{2}$ -plate $6\frac{1}{2} \times 4\frac{3}{4}$
The "Challenge" Beck Symmetrical Lens	£4 4 0	£4 15 0	£5 10 0
Aldis Lens, Series II, F/6	5 5 6	5 18 0	7 10 0
Taylor, Taylor & Hobson Lens	5 15 0	6 5 0	7 10 0
Ross Symmetric Anastigmat Lens	—	7 5 0	9 0 0
Ross Homocentric Lens, Series C, F/6.3	8 0 0	9 0 0	10 15 0
Taylor and Hobson "Cooke" Lens, F/6.5	8 0 0	9 0 0	10 15 0
Ross Goerz Double Anastigmat Lens, Series III., F/6.8	9 0 0	10 10 0	12 10 0
Dallmeyer Stigmatic Lens, F/6	9 10 0	10 0 0	12 0 0

NOTE.—The Dallmeyer Lens included in the above price is No. 2 for $\frac{1}{4}$ -plate, No. 2 for 5×4 , and No. 3 for $\frac{1}{2}$ -plate.

Camera only	£2 0 0	£2 7 6	£3 15 0
Camera and three Double Book Slides, including fitting customer's own Lens and Shutter, supplying and fitting View Finder and Scaling	3 10 0	4 0 0	4 10 0
Extra Double Book Slides, each	0 9 0	0 9 6	0 10 0
"Challenge" Changing Box with leather bag, for 6 plates	0 18 6	1 2 6	1 5 0
Do. do. for 12 Plates	1 2 0	1 6 6	1 6 6
Daylight Cartridge Film Holder including fitting to Camera, and interchangeable with Dark Slides	1 3 0	1 3 0	1 11 0
Brass-binding Camera and three Slides	1 2 0	1 5 0	1 10 0
Wide-angle Lens in Cells and interchangeable with the Lens fitted to the Bausch and Lomb Shutter, in leather case Solid Leather Case, with Lock, Hand, Shoulder and Cycle Straps, to hold Camera and three Slides	1 2 6	1 2 6	1 5 0
Do. do. to hold Camera and six Slides	0 10 6	0 13 0	0 16 0
Do. do. to hold Camera and six Slides	0 12 0	0 15 0	0 18 0



Lizards' "Challenge" Hand Camera.

MODEL E.

This model combines in the one apparatus a Camera of great portability and general usefulness. It is not so small as the Model "C" described on preceding page but, as it is fitted with a reversing back and a long double extension baseboard will probably find favour with those desiring a Camera having a greater range of movements, and who do not object to a little additional bulk.

SPECIFICATION.

Camera.—Either polished or covered in Morocco leather, leather bellows and focussing hood.

Shutter.—Is the famous Bausch and Lomb Unicum.

Finder.—Latest improvement of the new Brilliant form.

Slides.—Three double book form, on the latest principle; tongued in well, and with rabbeted frames and shutters.

Special Features.—Camera, lens, finder, and focussing hood all fold up together; rising and cross front and reversing and swing back, automatic catch, which locks the front at infinity distance. The usual focussing arrangement is provided and actuated by diagonal rack and pinion. Scale for various distances; as a stand Camera it is perfect.

Finish.—Most beautiful work throughout, with great exactness.

Lenses.—All the lenses supplied with these Cameras are carefully selected and tested.

PRICES as per Specification.

Fitted with	Size $\frac{1}{4}$ plate	5×4	$\frac{1}{4}$ plate
	$4\frac{1}{2} \times 3\frac{1}{2}$		$6\frac{1}{2} \times 4\frac{1}{2}$
	£ s. d.	£ s. d.	£ s. d.
Beck Symmetrical Lens	5 0 0	5 12 6	6 10 0
Aldis Lens, Series II, F/6	6 0 0	6 15 6	8 10 0
Taylor, Taylor & Hobson Lens	6 10 0	7 2 6	8 10 0
Ross Symmetric Anastigmat Lens	—	8 2 6	10 0 0
Ross-Homocentric Lens., Series C, F/6.3	8 15 0	9 17 6	11 15 0
Taylor and Hobson "Cooke" Lens, F/6.5	8 15 0	9 17 6	11 15 0
Ross-Goerz Double Anastigmat Lens, Series III., F/6.8	9 15 0	11 7 6	13 10 0
Dallmeyer Stigmatic Lens F/6	10 5 0	10 17 6	13 0 0

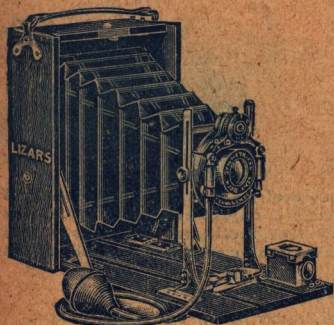
NOTE.—The Dallmeyer Lens included in above price is No. 2 for $\frac{1}{4}$ -plate, No. 2 for 5×4, and No. 3 for $\frac{1}{4}$ -plate.

	£ s. d.	£ s. d.	£ s. d.
Camera only	2 15 0	3 2 6	3 15 0
Camera and three Double Book Slides, including fitting customer's own lens and shutter, supplying and fitting View Finder and Scaling	4 5 0	4 15 0	5 10 0
Extra Double Book Slides, each	0 9 0	0 9 6	0 10 0
"Challenge" Changing Box with leather bag, for 6 plates	0 18 6	1 2 6	1 5 0
Do. Do. Do. for 12 plates	1 2 0	1 6 6	1 6 6
Daylight Cartridge Film Holder, including Fitting to Camera, and interchangeable with Dark Slides	1 3 0	1 3 0	1 11 0
Brass-Binding Camera and Three Slides	1 2 0	1 5 0	1 10 0
Solid Leather Case, with lock, hand, shoulder and cycle straps to hold Camera and 3 Slides.	0 10 6	0 13 0	0 16 0
Do. Do. to hold Camera and 6 Slides	0 12 0	0 15 0	0 18 0

LIZARS' - -

"Challenge" Postcard Plate Camera

For Plates 5½ in. × 3½ in.



Camera.—Either polished or in Morocco grained covering, and fitted with fine quality of leather bellows.

Shutter.—Bausch & Lomb's "Unicum."

Lenses.—Are all carefully tested before fitting to the Camera.

Slides—Three Double Dark Solid Slides with Aluminium Draw-out Shutters.

Finder.—Of improved brilliant form, with revolving mask, for horizontal and vertical pictures.

Principal Advantages.—The Lens, Shutter, Finder, and Focussing Screen all contained within the Camera when folded up; fitted with two bushes, making it suitable for stand as well as hand work; instantly opened, and front pulled forward on brass guides, and securely fixed at any position by means of quick acting lever; graduated lens scale, and leather handle.

Prices, as per Specification.

"Challenge" R.R. Lens or Beck Symmetrical Lens..	..	£4 0 0
Aldis Lens, Series II., F/6	5 10 0
Taylor, Taylor & Hobson Lens	5 12 6
Ross' Symmetric Anastigmat Lens	6 15 0

Ross Homocentric Lens, Series C, F/6.3	£8 2 6
Taylor & Hobson "Cooke" Lens, F/6.5	8 2 6
Ross-Goerz Double Anastigmat Lens, Series III., F/6.8 ..	9 2 6
NOTE. —With single valve Automatic Shutter and Rapid Rectilinear Lens	3 12 6

Camera and three Slides, including the fitting of customer's own Shutter and Lens (not exceeding 6 in. focus), supplying and fitting view finder and scaling	£2 17 6
Extra Double Dark Slides, each	0 7 6

Double Extension Baseboard, actuated by diagonal rack and pinion, extra	£0 15 0
Solid Leather Case, to hold camera and three Slides ..	0 10 6
Dimensions of Camera when closed 7 in. × 5 × 2½	
Weight of Camera, including Lens, Shutter, Finder and Focussing Screen ..	27 ounces

LIZARS' "CHALLENGE" CAMERA MODEL K. EXCEPTIONAL VALUE.

CAMERA.—Either polished or in Morocco grained covering.

Shutter.—Bausch and Lomb single Valve "Automatic," giving Time and instantaneous Exposures, and fitted with Iris Diaphragm.

Lens.—A fine quality Rapid Rectilinear Lens, giving splendid definition.

Slides.—The Double Dark Slides possess secure light traps, and are fitted with Aluminium Draw-out Shutter.

Finder.—Of the brilliant type, fitted with rotating wheel, shewing the horizontal and vertical view.



27/6 ONLY.

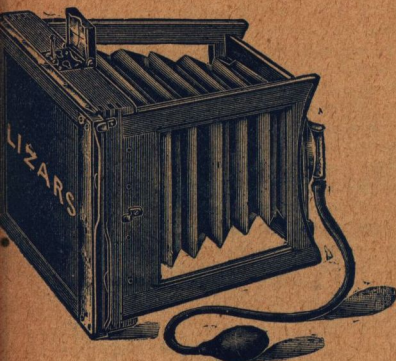
PRICE, as per Specification.

½-Plate Size, with one Slide Complete	£1 7 6
Extra Double Dark Slides each	0 4 0
Superior book form Double Dark Slides 3/6 each extra.		

LIZARS' "CHALLENGE" HAND CAMERA, MODEL H. ABSOLUTELY A POCKET CAMERA.

The Smallest $\frac{1}{4}$ -Plate Camera on Record.

Thoroughly Efficient and Reliable.



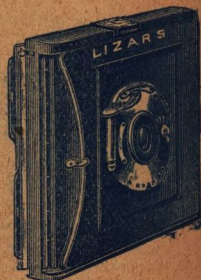
Camera. — is made of the best Spanish mahogany, with leather bellows.

Shutter. — Bausch and Lomb's "Automatic" Metal Shutter, and works for either time or instantaneous exposures.

Finder. is of the usual brilliant form.

Lenses. — The Lenses supplied with these Cameras are of excellent quality, and give fine definition.

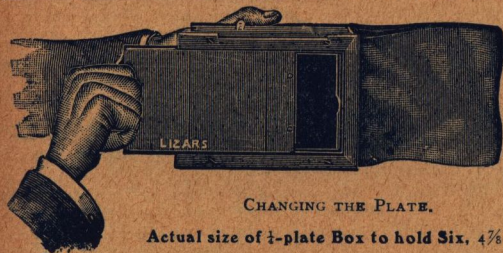
Slides. — Three in number, double, and of the solid form, with aluminium draw-out shutters, but on a new and improved principle. The **Light Traps**, which are fitted to the Slides, are an entirely new device, making them equal to the best Book Form pattern.



Special Features. — Compactness—Camera and Slides being easily accommodated in an ordinary coat pocket. Instantly opened, and immediately set at infinity. Bushes are let into the body of the Camera so that it may be used with a stand.

Prices, as Specification.

$\frac{1}{4}$ -plate, with high-class Achromatic View Lens	£	s.	d.
With Bausch & Lomb's "Unicum" Shutter and the "Challenge Beck Symmetrical Lens	2	2	0
Solid Leather Case, to take Camera and Three Slides		3	3
Extra Double Dark Slides, each		0	6
Dimensions of Camera when closed $5\frac{3}{8} \times 4\frac{3}{4} \times \frac{7}{8}$ in. thick. Weight of Camera and Three Slides including Lens, Shutter, and Finder, is 11 oz.		0	6



CHANGING THE PLATE.

Actual size of $\frac{1}{4}$ -plate Box to hold Six, $4\frac{7}{8} \times 3\frac{3}{4} \times 1\frac{1}{8}$ inches. !

LIZARS' "Challenge" Changing Box.

The advantages claimed for this box are simplicity, durability, cheapness, and absolute perfection in the changing arrangement. There are no mechanical appliances or springs to go wrong, the whole working being so simple as to preclude the possibility of a plate sticking when the box is in use, the plate being in perfect register during exposure. The plates are carried in metal sheaths, with an improved indicator for showing the number of plates exposed.

Price, complete with sheaths for plates fitted to my own Cameras.

With leather bag.

With cloth bag.

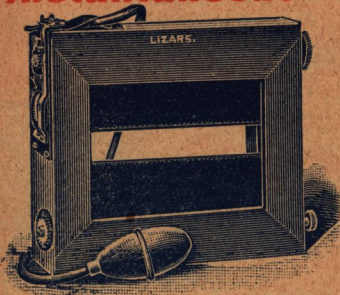
$\frac{1}{4}$ -plate (to carry 6 plates or films), £0 18 6	$\frac{1}{4}$ -plate (to carry 12 plates or films), £0 18 6	£1 2 0
5×4 -plate " " " 1 2 6	5×4 -plate " " " 1 1 6	1 6 6
$\frac{1}{4}$ -plate " " " 1 5 0	$\frac{1}{4}$ -plate " " " 1 1 6	1 6 6
$6\frac{1}{2} \times 3\frac{1}{4}$ stereo " " " 1 5 0		

Fitting to Cameras other than my own make $2/6$ each extra.

When using films one glass plate must be placed at the back of the last sheath to ensure rigidity and to prevent the springs buckling the films.

This is the most perfect and cheapest Changing Box in the market.

Lizars' "Challenge" Time and Instantaneous Focal Plane Shutter.



- Simple, Reliable and Durable.
- All adjustments from the outside.
- The smallest Focal Plane Shutter Manufactured.
- Slit adjusted when blind is at any Position in the daylight opening.
- Instantaneous exposures can be given when slit is same size as daylight opening.
- Greater range of Speeds than on any other shutter.
- The widths of slit and corresponding speed of shutter shown on outside indicators.
- Time exposures as long as desired.
- Vibration reduced to a minimum.
- Pneumatic and Finger release.
- Shutter set by a half turn of Winding Key.

THE "CHALLENGE" FOCAL PLANE SHUTTER,

consisting of a roller blind with adjustable opening, can be fitted to any make of Camera. The dark slides or plate holders then fit into the back of shutter.

This type of shutter is the best for successfully photographing quickly moving objects, such as Horses jumping and galloping, flying birds, men diving or running, yachts sailing, all kinds of sports, &c.

By means of the adjustable slit in the blind exposures ranging from 1-10th of a second up to 1-100th of a second can be given, as well as time exposures of any duration, thus making the shutter useful for all kinds of work.

By a simple arrangement of the adjustable slit numbers and speed indicator, the speed of the shutter is shown at a glance on reference to the tablet fixed to the side of the shutter.

A charge of from 5s. to 10s. is made for fitting to the camera according to the size of shutter and the amount of work necessary.

Prices of the "Challenge" Focal Plane Shutter.

4 1/4 x 3 1/4	1/2-plate	£2 0 0	6 3/4 x 3 1/4	Stereoscopic	£2 5 0
5 x 4	2 0 0	8 1/2 x 6 1/2	Whole Plate	3 5 0
6 1/2 x 4 3/4	3/4-plate	2 5 0				

The "Challenge" Time and Instantaneous Shutter.

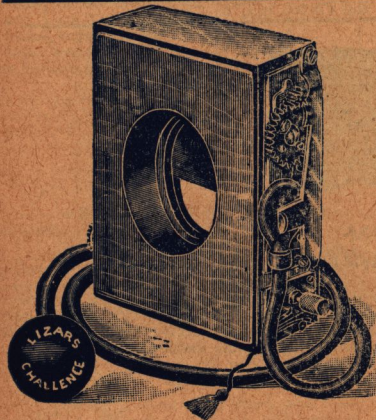
This shutter is of the well-known roller-blind pattern, and may be used for either time or instantaneous exposures.

The speed is variable, from 1-15th to 1-90th part of a second. Time exposures of any duration may also be given by regulating the pressure upon the pneumatic release.

The shutter is simple in action and reliable in construction, with absolutely no vibration.

Two patterns of the "Challenge" shutter are supplied—No. 1 to fit on to the hood or body of the lens, and No. 2 to attach direct to the camera front, the lens flange being mounted upon a loose lens panel on the front of the shutter.

Prices for shutter complete with speed indicator and ball and tube release.

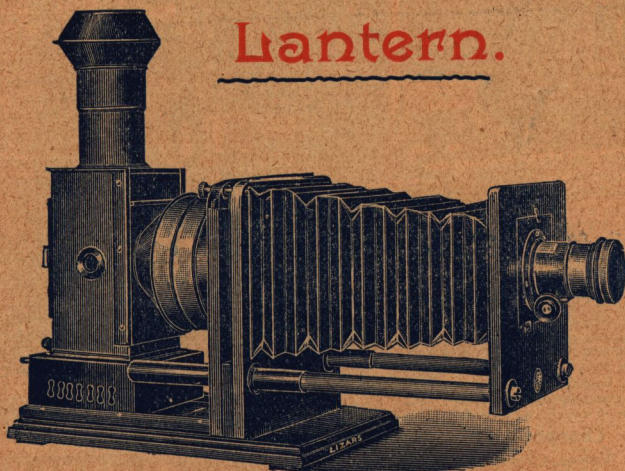


Inches diameter.

To fit a lens hood or tube up to	1	1 1/2	2	2 1/2	3
No. 1 Pattern	12/-	12/-	14/-	18/-	21/-
No. 2 Pattern (behind lens form)	13/-	13/-	15/-	20/-	25/-
Extra Lens panels for behind lens shutter, each	1/6	1/6	1/6	1/6	2/-
Extra pneumatic balls and tubes each	1/6

Lizars' "Challenge"

Perfect Enlarging Lantern.



The "Perfect" Enlarging Lantern has been designed and constructed to fulfil all the requirements necessary for obtaining the most satisfactory results. The woodwork is of the finest Spanish Mahogany, substantially and thoroughly well made and nicely polished. The Lantern body is of Russian Iron with well fitting cone over the condenser. The front is quickly pulled out, working in telescopic tubes, nicely fitted, with absolutely no shake, therefore securing perfect rigidity at the greatest extension.

The Condenser is double plano-convex, mounted in solid **Brass** cells, of **British Manufacture**, and constructed from the best optically worked glass.

The **Portrait Lens** is fitted with rack and pinion for fine adjustment or focussing, and supplied with Waterhouse diaphragms and orange glass cap. All the Lenses fitted to these Enlargers are carefully selected and tested.

The Carrier or negative holder is reversible, and can also be angled and held in position by a binding screw, which enables any irregularity or fault in the negative to be corrected when enlarging.

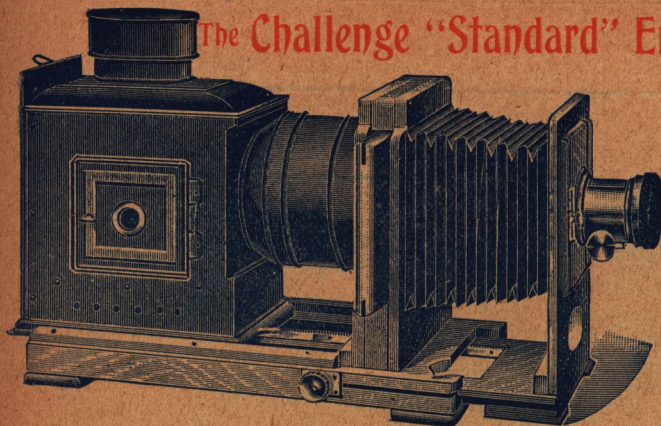
The Lantern is supplied either for Incandescent Gas or with Duplex Oil Burner, and altogether is a substantial, well considered and up-to-date instrument.



Prices as per Specification.

No. 1.	To Enlarge from $\frac{1}{2}$ -plate, 5 $\frac{1}{2}$ in. Condenser, complete with Lens	--	--	..	£3 10 0
No. 2.	To Enlarge from 5x4, 6 $\frac{1}{2}$ in. Condenser, complete with Lens	--	--	..	4 10 0
No. 3.	To Enlarge from $\frac{1}{4}$ -plate, 8 $\frac{1}{2}$ in. Condenser, complete with Lens	--	--	..	6 6 0

The Challenge "Standard" Enlarger.



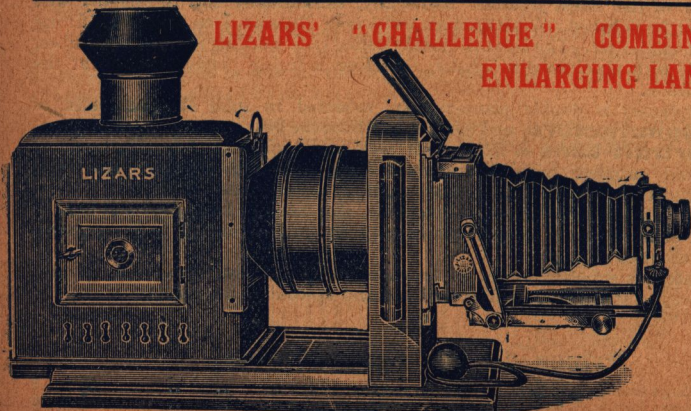
A practical Enlarging Lantern in polished Mahogany, with bellows and extending front, and rack and pinion focussing. Rising front for adjustment of Lens. Perfectly light-tight Russian iron body and carrier, to take negatives vertical or horizontal, can be used with any illuminant.

The 5½-inch is fitted with blocks so as to take an ordinary carrier for projecting Lantern Slides. 5½, 6½, 8½ condensers are the smallest sizes that will cover 4, 5×4, and ½-plate respectively.

PRICES. first quality.

	Diameter of Condenser.		
	5½-inch.	6½-inch.	8½-inch.
Polished Mahogany Enlarger with rack and pinion			
No. 1—Condenser Carrier, Tray and Cowl	£4 18 0	£6 8 0	£8 8 0
No. 2—Ditto, with Incandescent Outfit	5 10 6	7 5 0	9 0 0
No. 3—Ditto, with Portrait Lens, or R.R. Lens, with yellow glass cap for focussing	6 9 0	8 7 6	10 12 6
Condenser, with special adapter for projecting	0 10 6	0 15 0	0 18 0
Cheaper quality, also with rack and pinion movement.			
No. 4—Plain Walnut, Condenser Carrier, Tray, and Cowl	£3 12 6	£5 1 6	£7 0 0
No. 5—Ditto, with Incandescent Outfit	4 5 0	5 15 0	7 12 6
No. 6—Ditto, with Portrait Lens or R.R. Lens, with yellow glass cap for focussing	5 3 6	7 1 6	9 5 0
Condenser, with special adapter for projecting	0 10 6	0 15 0	0 18 0

LIZARS' "CHALLENGE" COMBINATION ENLARGING LANTERN.

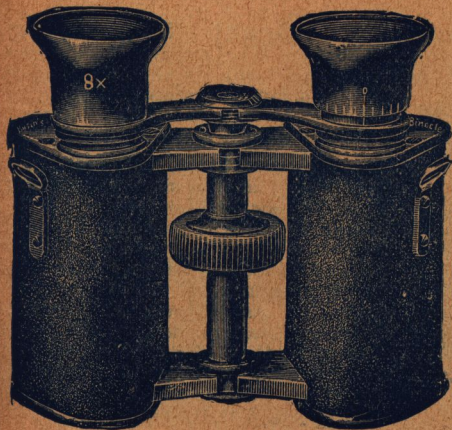


For use with ordinary Photographic Cameras.

PRICE—Lantern portion only, without Camera.
 ½-plate, with 5½ inch condenser .. £2 17 6 | ½-plate, with 8½ inch condenser .. £5 5 0

LIZARS' PRISM BINOCULARS.

“The Radiant.”



Principal Advantages:—

Defining power—Owing to larger objectives it is claimed for the “Radiant” Binoculars that the illumination is double that of any other form.

Adjustments:—

The focussing is manipulated by the usual screw adjustment so familiar in the older form of Field Glasses, but with this important addition; that, should the eyes be of different strength, an independent movement is used so that perfect coincidence of Focus is obtained. The varying width between the eyes is accommodated for by means of a central joint which, working on a divided scale, can be fixed when the proper distance has been found.

Construction:—

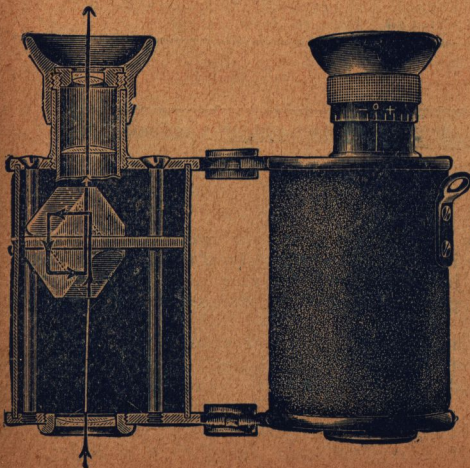
Bars and bodies are formed out of one extremely hard alloy of aluminium, there are therefore no screws or parts to become loose, and it is rendered almost impossible for the glass to get out of adjustment.

Elegant design, perfect mechanical and optical construction, portability” Prismatic.

and light weight are characteristic features of the “Radiant”

Price, in best solid leather case, with shoulder straps—

To magnify 6 times, weight 17 ozs., price	£6 10s
“ 9 ” “ 17 ”	£7 15s.



THE “IZAR”

Unprecedented value.

These glasses are of finest quality and combine all the essential features of a good instrument, high powers, large and well illuminated field of view, small size, light and portable.

For those desirous of having a first class instrument at a moderate price, they are unrivalled.

To magnify 6 times, in best solid leather case,	.. .	£4 10s.
To magnify 8 times, in best solid leather case,	...	£4 15s.

LIZARS' "RANGE" GLASSES.



The "Range" Field and Marine Glasses are constructed on an entirely new principle, and supersede in power and definition all other forms of Binoculars.

Important Advantages.

Great Magnifying Power.—The magnifying power of the best ordinary Field Glass is four diameters, rarely exceeded, and generally below that estimate. The "Range" Glasses magnify 6, 8, and 11 times.

Focussing Arrangement.—The focussing arrangement is a novel one, and does away with the trouble of focussing each time the glass is used. When the "Range" Glasses are once focussed they require no further attention, and are at any time ready for use without re-adjustment. This very great desideratum will be at once apparent to Military Men, as well as to Sportsmen and Tourists. They are exceedingly portable and light, and are in all respects of the best quality.

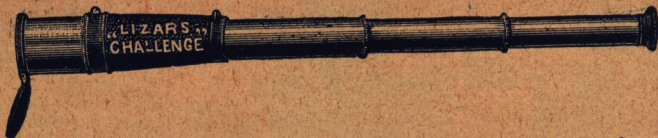
Price in best Solid
Leather Case with
Shoulder Straps—

To magnify 6 times	35/-
" 8 "	50/-
" 11 "	63/-

If mounted in Aluminium instead of Brass, thus reducing the weight one half,
45/-, 75/-, 95/-

These glasses have been taken in preference to all others for Military and Sporting purposes. I now make the 8 and 11 times Glasses with an adjustable centre bar, so that varying widths between the eyes of different users can be accommodated for. Price, 10/- extra.

LIZARS' "CHALLENGE" TELESCOPE.



This instrument is of entirely new design, giving the maximum of power in the minimum of bulk. It is made in hardened German silver, which makes it much lighter than if in brass, indeed just about half the weight. It is much to be recommended for general sporting purposes, and for deer-stalking it has been specially designed.

The object glass is $2\frac{1}{4}$ " in diameter, thus allowing for a large volume of light, making the instrument a capable one for use in dull weather. It is very beautifully finished throughout, and will stand an immense amount of exceedingly hard wear.

The magnification is 30 diameters.

It is sent out complete in Solid Leather Case with Shoulder Strap, and is in every respect a handsome as well as an excellent Telescope. **Price £6 6s.**