

A large, hand-drawn black oval frame is centered on the page. Inside the oval, the text "Ica Contessa Cameras" is written in a black, elegant cursive script. The word "Ica" is on the top line, "Contessa" is on the middle line, and "Cameras" is on the bottom line.

*Ica
Contessa
Cameras*



Printed on Mimosa Verotype Paper No. 10, toned with Mimosa Carbon Toner

Photo taken with an Ica Camera

*Ica
Contessa
Cameras*



Harold M. Bennett
U.S. Agent
110 East 23rd Street
New York

ICA CAMERAS

In issuing this, our first American catalogue of *Ica Cameras*, we draw the attention of the American photographic public to an assortment of cameras entirely different from those offered by any other manufacturer, American or foreign.

The photographic world owes much to American ingenuity for its part in the perfection of photographic equipment. Photography has advanced until to-day, it is practically useful in every human undertaking. When we consider the important part that photography plays in the world's events, the limitless uses to which it is placed astound us.

Europe has done its part to bring about wonderful advances in photography. It is well recognised that the world looked to Europe previous to the war for the best in photographic lenses, chemicals, and many types of cameras. It is not to be presumed therefore that within the short space of five years Europe's supremacy in these particular lines has been lost. Europe likewise has advanced, and many articles of photography which would have been considered as practically perfect five years ago, may now be considered obsolete by comparison.

The American photographic public, well acquainted with *Ica Cameras* five years ago, will note many improvements in the models of to-day, — improvements that have yet to be incorporated in cameras of other manufacturers.

Ica Cameras are the product of Europe's largest camera manufacturers. Their construction of metal has been recognised far superior to that of wood, as it gives a more compact, durable, and accurate camera. The rigid metal U-shaped front was originated in *Ica Cameras*. The single metal plate-holders have proved to be superior to the bulky, double wooden plate-holders of the past. The lenses used are of every desirable type, including lenses for extremely short exposures or work in poor light conditions, convertible types for distant pictures, and lenses of simple construction at more moderate prices.

ICA CAMERAS

Many models are furnished with the world-famous *Carl Zeiss Lenses*, recognised everywhere as the most perfect photographic lenses obtainable. The superior quality of these wonderful lenses has had much to do in making *Ica Miniature Cameras* popular. Photographs produced with these little cameras are not only equal, but in many respects far superior to results obtained with much larger cameras. They are really in a class by themselves, being capable of doing the most serious kinds of photography.

The stereoscopic *Ica* cameras are destined to give America a pleasant introduction to one of Europe's most fascinating photographic pastimes. No photograph can be quite as realistic as the stereo, and no stereo-photograph can excel in general excellence that produced with the Polyscope. In the stereo, the picture is seen in relief, more lifelike and natural than in any other type of photograph. Stereo-pictures have a fascinating power that holds the attention, as no other photograph possibly can.

In the larger sizes of *Ica* plate and film pack cameras will be found instruments for the most critical work. It is well known that for photography a plate or film is necessary. In using a plate camera, the photographer has many types of plates to select from, using the particular plate that is best suited for the particular work to be done. There are plates for landscapes, interiors, portraits, copies, speed work, and for the photography of highly colored objects. There are also plates which make photographs in natural colors. Any kind of plates may be used in *Ica* plate cameras. — By means of a film pack adapter, film packs may also be used. Here we may add that plates and films for all *Ica Cameras* listed herein are supplied by American manufacturers.

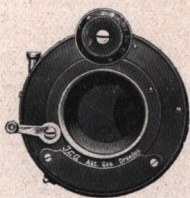
Ica Cameras are fitted with the Novar, Hekla, and Orix Anastigmats, and especially with the lenses made by Carl Zeiss, Jena, catalogue of which may be had upon request.

The Novar is a very moderate priced lens, and although not as well corrected as the Hekla lens, gives excellent results.

The Hekla is a well corrected anastigmat rendering perfect detail at its largest opening f: 6.8. It is convertible and may be used for distant objects with cameras having sufficient bellows-extension, by unscrewing the front element of the lens.

ICA CAMERAS

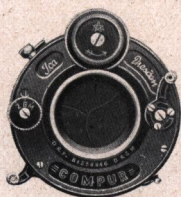
Among the *Ica* models will surely be found a camera for nearly every purpose, as the careful study of the catalogue will show. We are always prepared to assist prospective buyers in the selection of an *Ica Camera* most suitable for their requirements, but in all cases ask that the final purchase be made of a camera dealer who regularly carries *Ica Cameras* in stock.



Automatic

For Time, Bulb, or Instantaneous exposures of $\frac{1}{25}$, $\frac{1}{50}$, $\frac{1}{100}$ of a second.

SHUTTERS



Compur

For Time, Bulb, or Instantaneous exposures of 1, $\frac{1}{2}$, $\frac{1}{5}$, $\frac{1}{10}$, $\frac{1}{25}$, $\frac{1}{50}$, $\frac{1}{100}$, $\frac{1}{250}$ of a second. The smallest sizes have a maximum speed of $\frac{1}{300}$ of a second.

With the introduction of the Atom, B  b   and Icarette in America some years ago, America became acquainted with high grade miniature-cameras, accurately built, and fitted with the best lenses and shutters obtainable. These little cameras won friends rapidly and many an enthusiastic worker laid his larger camera aside to experiment with the Ica Miniature Camera, finding that enlargements from the little camera were not only equal but superior to contact-prints from a large camera. Many interesting articles upon this subject have appeared in various photographic publications, and many enlargements from Ica Miniature negatives have won high honors at the leading photographic exhibitions. In analyzing the advantages of the miniature camera fitted with high quality lens and shutter we find the following:

1. Depth of field with the short focus lens is far greater than with long focus objectives. This permits the use of a large lens opening with the miniature camera, which would be quite impossible with a large camera. In actual tests it has been found

ICA CAMERAS

that a 5×7 in. enlargement from an Atom negative, $1\frac{1}{4} \times 2\frac{3}{8}$ in., taken with a $2\frac{1}{2}$ in. lens, using an f: 4.5 diaphragm, has the same depth of field as a contact print made with a 7 in. lens on a 5×7 in. camera, using a diaphragm f: 11. With these lens openings the Atom, with the f: 4.5 diaphragm has produced the same depth of field as the 5×7 in. camera, and required but $\frac{1}{6}$ of the exposure.

2. Ability to stop motion, using a slower shutter speed than with a large camera. Differences with regard to the sharpness of moving objects will be much less noticeable on a small plate $2\frac{1}{2}$ in. in diameter than on a 4×5 in. negative. In actual comparison using the Atom with a $2\frac{1}{2}$ in. lens, and a 4×5 in. camera with a 6 in. lens, it will be found that the Atom will arrest motion in $\frac{1}{300}$ of a second that would require an exposure exceeding $\frac{1}{600}$ of a second with the 4×5 in. camera.

3. Actual cost of producing, we will say 5×7 in. pictures, making enlargements from little negatives $1\frac{1}{4} \times 2\frac{3}{8}$ in. is much less than making contact-prints and negatives with a 5×7 in. camera. Taking the cost of production with each camera, and it will be found that 5×7 in. pictures can be produced at a considerable saving with a Miniature Camera.

4. Convenience in using the Ica Miniature Cameras. Many of the best opportunities for picture making occur when we have no camera. The compactness and light weight of the Ica Miniature Cameras permit their being carried at all times in the pocket.

If in using the Ica Miniature Cameras the same care is taken as with a large camera, say 8×10 in., and if there is given individual attention to the development and finishing of each plate, the results will be the very best ones, and photography will produce new pleasures, quite impossible to obtain with large and bulky cameras.

There have also been inserted in this list some of the best camera models of the famous and well known Contessa Nettel Works which enjoy a great favor on account of their practical construction, first-rate material, workmanship and finish. Like the Ica Cameras, the Contessa Nettel Cameras are equipped with Compur shutters and Carl Zeiss lenses, the details of which are described above. Besides they are fitted with the Teronar Anastigmats f: 5.4 and Citonar Anastigmats f: 6.3. — The quality

ICA CAMERAS

of the Citonar is equal to that of the Ica Novar Anastigmat, while the Teronar is a very carefully corrected Anastigmat $f: 5.4$ which is most suitable for any kind of photographic work. Both the Citonar as well as the Teronar Anastigmats are of the convertible type.

Between the Contessa Nettel Cameras, the Piccolette is the most striking model. Its technical perfection, compactness and rigidity leave nothing to be desired, and it will soon be the companion of numerous advanced amateurs and beginners, no matter how many cameras of other types they already might possess. In order to answer every requirement, the Piccolette is supplied with cheap lenses as well as with the very best ones. —

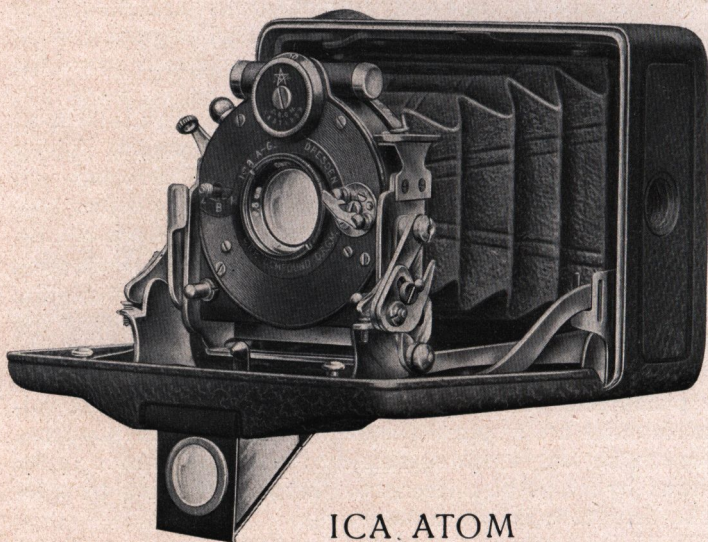
The Nettel Focal Plane Cameras are also thoroughly trustworthy instruments. They are fitted with a most reliable shutter of the self-copping type; while winding it up, the slit is closed and the plate protected from being spoiled.—Furthermore the collapsible struts are a special feature of Contessa Nettel Cameras. They can be lengthened or shortened from the outside of the cameras by means of a lever, and therefore focusing by a focusing lens tube is not necessary. —

The V. P. Sonnet and the Nettel Sonnet form a cheaper class of the Contessa Nettel Cameras, a description of which is given on pages 38 and 39.

A complete list of the Contessa Nettel Cameras will be published within a short time.



ICA CAMERAS



ICA. ATOM

The *Ica Atom* is a most compact little handful of a camera, measuring over all $3\frac{1}{2} \times 1\frac{1}{2} \times 2\frac{3}{4}$ in., takes pictures $1\frac{3}{4} \times 2\frac{1}{2}$ in. ($4\frac{1}{2} \times 6$ cm.), and weighs $12\frac{1}{4}$ ounces. Yet this little instrument is most complete in every detail.

Fitted with the Compur Shutter, exposures may be made in from 1 to $\frac{1}{300}$ of a second, as well as time and bulb exposures.

Focusing is done by moving a small upright lever forward or back. The *Ica Atom* is fitted with focusing scale, also with a hooded ground-glass back with which the image may be observed.

The *Ica Atom* is furnished with reversible brilliant finder, tripod sockets for horizontal or vertical pictures, also with flexible cable shutter release. The front is of the self erecting type so that when the camera is opened the front is automatically extended, and the lens

ICA CAMERAS

securely locked in focus for infinity or distance. This construction is extremely rigid, quick acting, and does not readily get out of order.

The *Ica Atom* may be used with single plate holders, plate-magazine accomodating twelve plates, or film pack adapter, all being interchangeable. Instead of sliding into place in the back of the camera, the plate holders of the *Ica Atom* clamp on. This is a most simple and convenient method with a small camera, as there is little possibility of jarring the camera out of position, if on an unsteady support.

The plate holders of the *Ica Atom*, instead of having a rabbet at one end, are rabbetted around their entire front surface, and fitting into a corresponding groove in the rear face of the camera, make an absolutely light-tight connection.

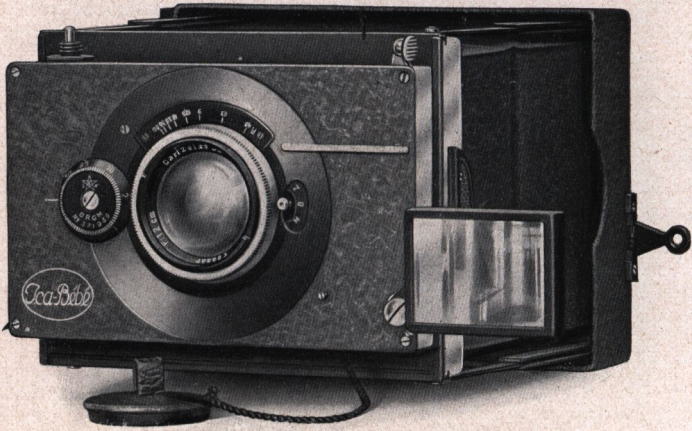
The *Ica Atom* is furnished with *Carl Zeiss Lenses*, Series Ic f:4.5 and Series Iib f:6.3 as well as with the Hekla Anastigmat f:6.8, all of 2½ in. focal length, making it an ideal miniature camera for photographs in poor light conditions, even snapshots in the rain being possible. Due to the short focal length of the lens, the *Ica Atom* is a most practical high speed camera. Working in 1/300 of a second, the shutter of the *Atom* will arrest motion which with a camera 4×5 in. in size would require an exposure of 1/600 of a second, as described on page 6.

From *Atom* negatives, satisfactory enlargements up to 8×10 in. and even larger can be made.



Atom with Carl Zeiss Lens, Series Ic f:4.5, 2½ in. focus	
With Carl Zeiss Lens, Series Iib f:6.3, 2½ in. focus	
With Hekla Anastigmat, f:6.8, 2½ in. focus	
Film Pack Adapter	
Plate Magazine holding 12 plates	
Extra plate holders, each.	
Five times Yellow Glass Filter	
Leather case to hold camera, three holders and film pack adapter or camera with plate magazine.	

ICA CAMERAS



ICA B B , Models A and B

The Ica B b  A although making the same size picture, $1\frac{3}{4} \times 2\frac{1}{2}$ in. ($4\frac{1}{2} \times 6$ centimeters) as the Ica Atom, is a distinctly different type of camera. It can be folded, and when closed measures $3\frac{3}{4} \times 2\frac{3}{4} \times 1\frac{3}{4}$ in. and weighs 14 ounces. It has focusing adjustment to three feet actuated by a lever. A direct vision finder is fitted which enables the user to operate the camera from the eye's level, sighting through the finder in much the same manner as one would sight a rifle. Holding the camera at the eye's level, eliminates objectionable foreground, resulting in a much more pleasing picture than if taken at a lower level as is necessary when using a camera fitted only with reflecting finder. The back is equipped with hooded ground glass which is readily removed by pressing a button. Plate holder, film pack adapter, or plate-magazine, may then be easily clamped on. This method of attaching holders is a decided advantage over the slide-in method, as it is quicker, absolutely light tight, and the operation is less likely to jar the camera out of position when using a tripod. The Ica B b  A is

ICA CAMERAS

fitted with Compur Shutter having a maximum speed of $\frac{1}{200}$ of a second, and Carl Zeiss Lens, Series Ic f: 4.5, of 3 in. focus.

The Ica B  b   B is almost identical with the Ica B  b   A except in size, making $2\frac{1}{2}\times 3\frac{1}{2}$ in. ($6\frac{1}{2}\times 9$ cm.) pictures. In addition to the many features of the smaller camera, the Ica B  b   B has horizontal and vertical front movements, these movements being indicated correctly in the finder. The B  b   B measures when closed $5\frac{1}{4}\times 3\frac{3}{8}\times 2\frac{1}{4}$ in. and weighs 29 ounces. The lens furnished is the Carl Zeiss, Series Ic f: 4.5, of $4\frac{3}{4}$ in. focus.

With each Ica B  b   Camera are furnished six single metal plate holders, cable shutter release, and leather carrying case.

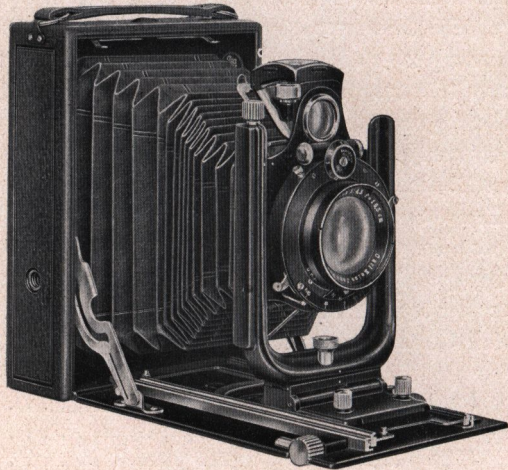
For quick, accurate work, capable of the utmost in enlarging, the Ica B  b   Camera is unexcelled.

- Ica B  b   A or B as above described
- Film Pack Adapter
- Plate Magazine holding 12 plates
- Extra plate holders, each
- Five times Yellow Glass Filter



Ica B  b   A and outfit

ICA CAMERAS



ICA IDEAL Model A

Although a camera for general all around work is often asked for, such an instrument is quite an impossibility. For its size, it is safe to say that no more versatile camera is to be had than the Ideal A, using plates $2\frac{1}{2} \times 3\frac{1}{2}$ in. ($6\frac{1}{2} \times 9$ centimeters) or film packs $2\frac{1}{4} \times 3\frac{1}{4}$ in. This little instrument is truly a pocket camera, measuring over all when closed $5\frac{1}{4} \times 2 \times 3\frac{1}{2}$ in., and weighing $26\frac{1}{2}$ ounces. It is constructed of metal, finished in polished black enamel, and covered with pin grain seal leather.

The extreme bellows extension, ($8\frac{1}{2}$ in.) permits focusing on objects as close as nine inches from the camera, a decided advantage in making copies or photographing small objects. With the Nostar Lens the Ideal does excellent telephoto work. The Nostar Lens can only be furnished for the Ideal when fitted with the Carl Zeiss, Series Ic f: 4.5 or Series IIb f: 6.3, the resulting magnification being $1\frac{1}{2}$ diameters.

ICA CAMERAS

The other lenses furnished with the Ica Ideal A are convertible, permitting the use of the rear element of the lens for distance pictures, the resulting image being about double the diameter of that produced with the combined lens.

The lens panel of the Ideal has both vertical and horizontal movements of one inch, considerable for a camera of its size. These adjustments, together with the long extension are most important in architectural photography.

For critical work focusing may be done while viewing the image on the hooded ground glass. The movable bed is operated by rack and pinion adjustment and can be locked at any desired point. The bellows is fitted with an automatic take-up, eliminating the possibility of its sagging and perhaps cutting off part of the picture.

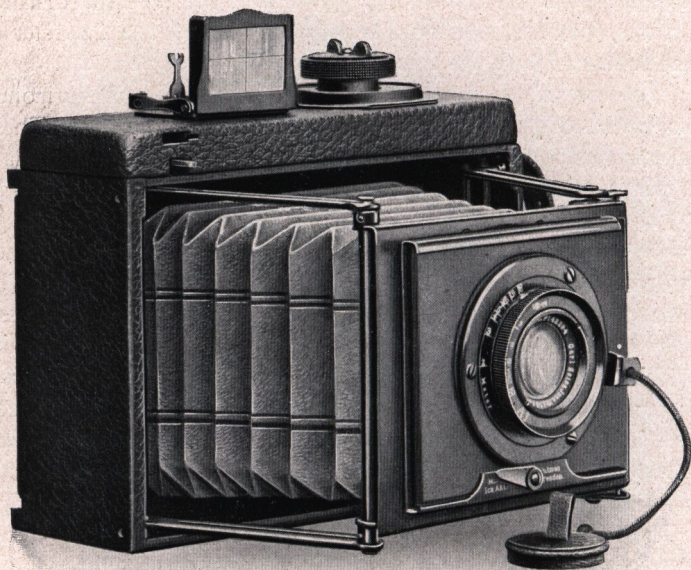
Equipped with the Carl Zeiss Lens, Series Ic f: 4.5 the Ideal is a very practical camera for home portrait photography. It has been used for portraits and pictorial work by several of the best known photographers in these fields. In fact many of the most admired exhibition prints have been produced with the Ica Ideal.

The Ica Ideal A is furnished with the Compur Shutter having speeds from 1 to $\frac{1}{250}$ of a second. With each camera three single plate holders and a cable shutter release are included.



- Ica Ideal A with Hekla Lens, f: 6.8, $3\frac{1}{2}$ in. combined focus,
rear element $6\frac{1}{4}$ in. focus
- With Carl Zeiss Lens, Series IX f: 6.8, $3\frac{1}{2}$ in. combined focus,
rear element 6 in. focus
- With Carl Zeiss Lens, Series IIb f: 6.3, $4\frac{3}{4}$ in. focus
- With Carl Zeiss Lens, Series Ic f: 4.5, $4\frac{3}{4}$ in. focus
- Nostar Lens to be used with Carl Zeiss Lenses, Series Ic
f: 4.5 or Series IIb f: 6.3
- Five times Yellow Glass Filter (specify for which lens in ordering)
- Extra plate holders, each
- Film Pack Adapter
- Purse to hold three plate holders
- Leather case to hold camera, three plate holders, and F. P. Adapter

ICA CAMERAS



ICA MINIMUM PALMOS Model A

The Ica Minimum Palmos A, size $2\frac{1}{2} \times 3\frac{1}{2}$ in. ($6\frac{1}{2} \times 9$ cm), is designed particularly as an out-of-doors camera. The lens with which it is fitted is the Carl Zeiss, Series Ic f:4.5, capable of taking instantaneous pictures even in a poor light. The shutter is of the focal plane type having instantaneous speeds up to $\frac{1}{700}$ of a second. It is therefore suitable for high speed pictures, such as of races, aeroplanes in flight, athletic events, etc. It can be made ready almost instantly, and is handled much like a rifle, being held at the eye's level

ICA CAMERAS

and sighted with the direct view finder with which it is equipped.

The shutter speeds can be altered most readily. To change the speed it is only necessary, previous to setting the shutter, to pull out the round winding knob, and turn to the desired speed number, which may be seen through the transparent celluloid opening, surrounding the winding knob. There are seven instantaneous speeds, quite sufficient for any possible kind of instantaneous work.

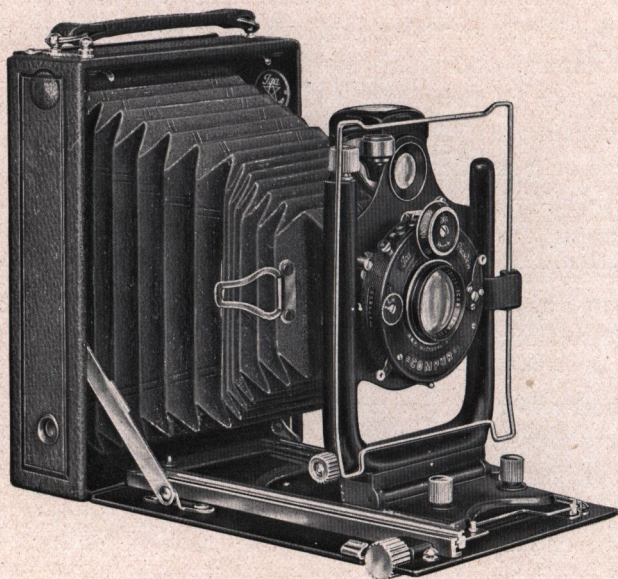
The Ica Minimum Palmos is also recommended for child pictures. It has just the qualities so essential for children's pictures, — an extremely rapid lens, the most efficient type of shutter ever made, and ease of manipulation. A hooded ground-glass back is provided so that the camera may be supported on a tripod and focussed for interior work, like many other hand cameras. The front has both vertical and horizontal movements so that the Ica Minimum Palmos may be used quite successfully for such work as architectural or interior photography.

When extended, the camera front is absolutely rigid. A focusing lever is on the lens mount and when rotated, moves the lens forward or backward, the distance being indicated on an engraved scale surrounding the lens barrel.

Although the Ica Minimum Palmos, like many other Ica Cameras, may appear to be a radical departure from camera models with which the American photographic public is familiar, it has proved such a very popular type in Europe that it is certain to be equally appreciated in America.

Ica Minimum Palmos A with Carl Zeiss Lens, Series I c f: 4.5,
4¾ in. focus including three double ebonized wooden
plate holders, and cable shutter release
Film Pack Adapter
Double wooden plate holders, each
Single metal plate holders, each
Adapter for single metal plate holders
Five times Yellow Glass Filter
Leather case to hold camera, three plate holders, and F.P.Adapter

ICA CAMERAS



ICA IDEAL Model B

In the Ica Ideal B is offered a camera of more ambitious proportions than any of the foregoing models. The size of the pictures it produces is $3\frac{1}{2} \times 4\frac{3}{4}$ in. (9×12 centimeters).

The dimensions of the Ica Ideal B when closed are $2 \times 5 \times 6\frac{1}{2}$ in., and the weight $41\frac{1}{2}$ ounces, except when furnished with the Carl Zeiss Lens, Series Icf: 4.5, which necessitates a larger camera, the size being $2\frac{3}{4} \times 5 \times 6\frac{1}{2}$ in., and the weight $45\frac{1}{2}$ ounces.

Like its smaller brother, the Ica Ideal A, it is the nearest approach to a general all-around camera, being capable of the average re-

ICA CAMERAS

quirements of the most ambitious photographer. The construction is entirely of metal, insuring strength and extreme rigidity. The finish is black enamel and nickel, the covering being of fine grain seal leather.

Its extreme bellows extension, $11\frac{1}{2}$ in., will be found invaluable for many kinds of photographic work. It is sufficient to permit using the rear elements of the convertible lenses, also permitting the use of the Nostar Lens with the Carl Zeiss Lenses, Series Ic and IIb. Photographs can be made of objects within 10 in. of the camera, a necessity in making copies and pictures of small objects. The bellows is provided with automatic take-up which at all times supports the bellows when not fully extended, and eliminates the possibility of cutting off part of the picture.

The front has a vertical movement of $1\frac{1}{4}$ in. and a horizontal movement of $1\frac{3}{8}$ in. There also is provided a vertical swing back, quite an innovation in a camera of such small proportions.

One of the most important features of the Ica Ideal B is the Iconometer, the most accurate finder that can be fitted to a camera. It consists of a strong metal frame of the same dimensions as the picture, mounted on the plane of the lens, and an eye-piece, or sight, mounted on the plane of the plate. Holding the camera at the eye's level, the view is observed through the Iconometer. As the metal frame moves with the lens forward, backward, up or down, every variation in the angle of view, due to extending the bellows, also any horizontal or vertical movement is accurately registered. The Iconometer is perhaps one of the most important features of Ica Cameras. A large, brilliant, reflecting finder is also provided.

A bayonet lock holds the shutter in place. The shutter may be instantly removed to permit cleaning the rear lens, by pressure of a button and a slight turn of the shutter. The lock is not pro-

ICA CAMERAS

vided when the Carl Zeiss Lens, Series Ic f: 4.5 is furnished, on account of a large size shutter being then necessary.

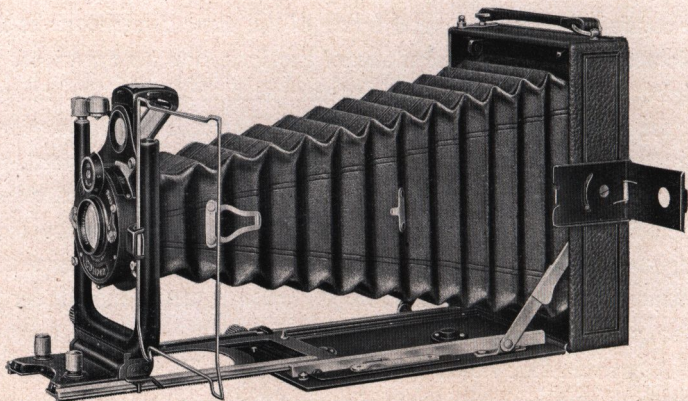
Like in the smaller sized Ica Ideal A, the plate holders, film pack adapter, and back, clamp on. The large focusing hood completely surrounds the ground-glass obviating the use of a focusing cloth.

Should the size of $3\frac{1}{4} \times 4\frac{1}{4}$ in. be desirable for some work, metal kits are furnished for both plate holders and film pack adapter so that either 9×12 cm or $3\frac{1}{4} \times 4\frac{1}{4}$ in. plates or film packs may be used.

The lenses furnished offer the best possible selection to choose from, and with the Compur Shutter surely offer for selection a photographic optical equipment to meet the requirements of the most exacting photographer.

It is quite certain that no camera ever combined so many practical advantages in so compact a form, and of equal good quality, as the Ica Ideal B.

With the Ica Ideal B are furnished three single metal plate holders in purse and cable shutter release.



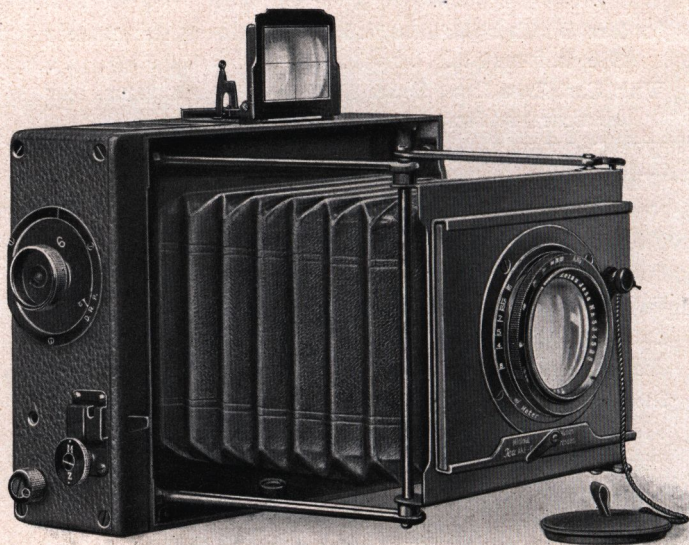
Ica Ideal B showing extension

ICA CAMERAS

- Ica Ideal B with Hekla Lens, f: 6.8, 5 $\frac{1}{4}$ in. focus, rear element
9 $\frac{1}{2}$ in. focus
- With Carl Zeiss Lens, Series IX f: 6.8, 5 $\frac{1}{4}$ in. focus, rear
element 9 in. focus
- With Carl Zeiss Lens, Series IIb f: 6.3, 5 $\frac{1}{4}$ in. focus
- With Carl Zeiss Lens, Series Ic f: 4.5, 5 $\frac{1}{4}$ in. focus
- Nostar Lens for the use with Carl Zeiss Lenses, Series Ic and
IIb (specify which lens in ordering)
- Five times Yellow Glass Filter for f: 6.3 or f: 6.8 lenses
- Five times Yellow Glass Filter for Carl Zeiss Lens, Series Ic
Extra plate holders, each
- Film Pack Adapter
- 3 $\frac{1}{4}$ ×4 $\frac{1}{4}$ metal kits for 9×12 cm. plate holders, each
- 3 $\frac{1}{4}$ ×4 $\frac{1}{4}$ metal kits for 9×12 cm. F. P. Adapter, each
- Purse to hold three plate holders
- Leather case to hold camera, three plate holders, and F.P.Adapter



ICA CAMERAS



ICA MINIMUM PALMOS Model B

The Ica Minimum Palmos B is of the same type as the Palmos A except for its size which is $3\frac{1}{2} \times 4\frac{3}{4}$ in. (9×12 centimeters), and the shutter which has a greater range of speeds. The size over all when closed is $3\frac{1}{4} \times 5\frac{3}{8} \times 7\frac{1}{4}$ in. and the weight $45\frac{1}{2}$ ounces. Although the weight and bulk of the Ica Minimum Palmos B is only about 25% of a reflecting camera making pictures of a corresponding size, the Palmos will do the same work, having the same type of shutter, and besides has many other advantages. Many users of reflecting cameras have experienced trouble when using slow speeds due to the mirror movement jarring the camera during exposure. This possibility cannot take place with the

ICA CAMERAS

Palmos, because exposures as slow as $\frac{1}{7}$ of a second may be successfully made indoors while holding the camera. This is a great advantage for interior portraits, particularly of children.

The lens furnished is the Carl Zeiss, Series Ic f: 4.5, which is most suitable for interior instantaneous exposures. There are twenty instantaneous speeds ranging from $\frac{1}{7}$ to $\frac{1}{1000}$ of a second, also time exposure. The shutter may be operated either by finger or cable release. The front has both horizontal and vertical movements. The back is provided with a hooded ground glass obviating the necessity of a focusing cloth.

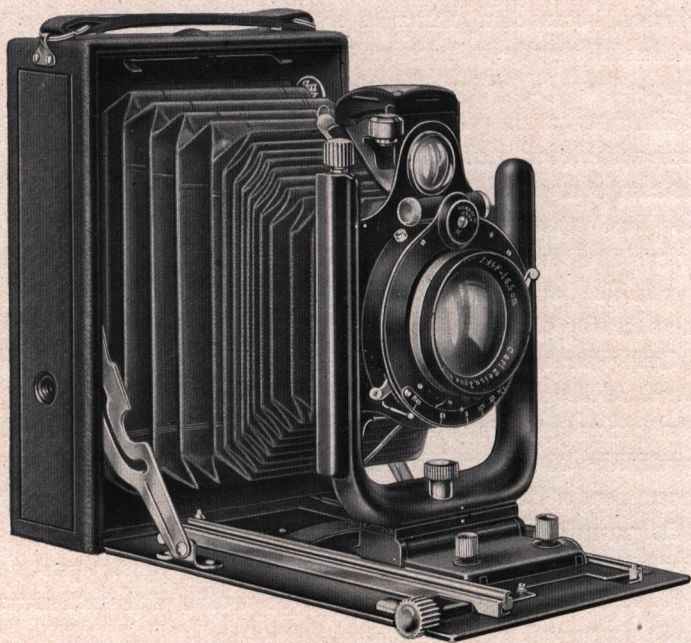
The plate holders are double, being constructed of ebonized wood reinforced with metal corners and a metal light-trap. The film pack adapter is of similar construction. In summarizing the capabilities of the Ica Minimum Palmos B it can be particularly recommended for speed pictures of rapidly moving objects, for child portraiture, and for exploration work, where compactness, durability, and quickness of operation are of the utmost importance.

With the Palmos are included three double plate holders and cable shutter release.



Ica Minimum Palmos B with Carl Zeiss Lens, Series Ic f: 4.5, 6 in. focus	
Five times Yellow Glass Filter	
Double wooden plate holders, each	
Single metal plate holders, each	
Adapter for single metal plate holders	
Film Pack Adapter	
$3\frac{1}{4} \times 4\frac{1}{4}$ metal kits for 9×12 cm. plate holders, each . . .	
$3\frac{1}{4} \times 4\frac{1}{4}$ metal kits for 9×12 cm. F. P. Adapter, each . . .	
Leather case to hold camera, three plate holders, and film pack adapter	

ICA CAMERAS



ICA TRIX Model B

The Ica Trix B has already won a reputation for itself, having been adopted some years ago by many of the leading daily newspapers as the most satisfactory camera for this very difficult branch of photography. Its size over all when closed is $2\frac{3}{8} \times 5\frac{3}{8} \times 7\frac{3}{4}$ in. and weight $47\frac{1}{2}$ ounces. The size of the pictures is 4×6 in. (10×15 centimeters), perfect proportions for artistic composition.

Press work requires a camera that can be readily concealed about the person, yet producing pictures large enough to make reproductions of. It must have the most perfect lens both for detail and extreme speed, for the press-photographer cannot choose his light and must be equipped to make pictures under the most trying light conditions. The operation of the camera must be simple, for in

ICA CAMERAS

many instances but a moment of time is available to make ready and get the picture. The camera must also be suitable for flash-light work, holding the camera and operating the flash at the same time. The camera must be built strong and be as inconspicuous as possible.

The Ica Trix B meets with all of these qualifications. It has bellows capacity of fourteen in., vertical and horizontal front movements of $1\frac{1}{8}$ and $1\frac{1}{4}$ in. respectively, large brilliant view-finder, three tripod sockets, hooded ground glass back, and rack and pinion focusing attachment.

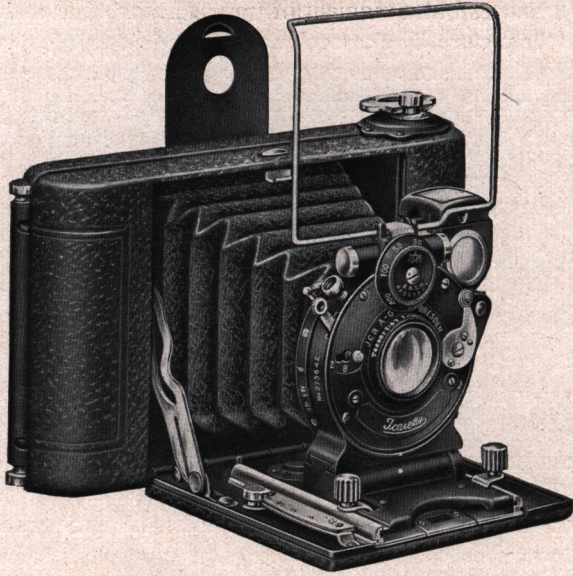
The plate holders are of sheet steel, strong, accurate, and with no projections. Three of the Trix B holders are of about the same bulk as one double wooden holder of corresponding size.

A camera of such vast capabilities as the Ica Trix B will surely appeal to the Critical, as well as to the press photographer.

It can be supplied with lenses for practically any class of work. The shutter is the Compur having speeds from 1 to $\frac{1}{150}$ of a second when fitted with the Carl Zeiss Lens, Series Ic f: 4.5, and up to $\frac{1}{200}$ of a second with the other lenses. With the camera are included three plate holders, and cable shutter release.

Ica Trix B with Hekla Lens, f: 6.8, $6\frac{1}{2}$ in. focus, rear element 11 in. focus
With Carl Zeiss Lens, Series IX f: 6.8, $6\frac{1}{2}$ in. focus, rear element $10\frac{3}{4}$ in. focus
With Carl Zeiss Lens, Series IIb f: 6.3, $6\frac{1}{2}$ in. focus
With Carl Zeiss Lens, Series Ic f: 4.5, $6\frac{1}{2}$ in. focus
Nostar Lens for Carl Zeiss Lens, Series IIb f: 6.3.
Nostar Lens for Carl Zeiss Lens, Series Ic f: 4.5
Five times Yellow Glass Filter for Carl Zeiss Lens, Series Ic f: 4.5
Five times Yellow Glass Filter for other lenses
Plate holders, each
Film Pack Adapter
Leather case to hold camera with three plate holders and F. P. Adapter, or camera with six plate holders

ICA CAMERAS



ICARETTE Model A

The Icarette A embodies many distinctive features entirely its own. Although a miniature camera making pictures $2\frac{1}{4} \times 2\frac{1}{4}$ in., using any make of roll film, the Icarette A measures over all $1 \times 2\frac{3}{4} \times 5$ in. and weighs 14 ounces. It is a suitable camera to carry constantly, readily fitting the pocket. The many opportunities to make pictures that present themselves during our daily routine, amply justify having the Icarette A as one's constant companion.

Its field of picture making is almost unlimited when equipped with the faster lenses and Compur Shutter. Excellent results are obtainable even when the sky is overcast. The extreme shutter speed, $\frac{1}{300}$ of a second, will catch rapidly moving objects such as aeroplanes in flight, races, and athletic events. It is equally capable of portraiture and interior work. The high quality of the lenses furnished insures exceptional results in enlarging from Icarette

ICA CAMERAS

negatives. The picture it makes, size $2\frac{1}{4} \times 2\frac{1}{4}$ in., lends itself particularly well to enlarging, as, being square, it may easily be proportioned in enlarging to a vertical or horizontal print.

The Icarette A is fitted with rising front, the movement of which is indicated by the Iconometer finder with which the camera is equipped. The Iconometer is absolutely accurate and permits using the camera at the eye's level. A brilliant indirect finder is also fitted.

Focusing is done by a lever focusing adjustment to as close as three feet. The Icarette with Novar Lens and Automatic Shutter is an excellent inexpensive instrument, quite suitable for the average requirements of a beginner. The Novar Lens has an aperture of $f: 6.8$ and is very well corrected so that for instantaneous pictures brilliant sunlight is not necessary. With a better lens and Compur Shutter, however, the Icarette A is unexcelled as a miniature camera for pictures under all conditions from which perfect enlargements up to 11×14 in. can be made. The Compur Shutter furnished with the Icarette A has a maximum speed of $\frac{1}{300}$ of a second, sufficient for high speed work. The camera is provided with tripod socket of standard size.

The method of loading is extremely simple, as the entire back is readily removed, allowing easy access to the film chambers. With each camera is furnished a cable shutter release.

- Icarette A with Novar Anastigmat, $f: 6.8$, 3 in. focus and Automatic Shutter
- With Hekla Anastigmat, $f: 6.8$, 3 in. focus and Compur Shutter
- With Carl Zeiss Lens, Series II b $f: 6.3$, 3 in. focus and Compur Shutter
- With Carl Zeiss Lens, Series Ic $f: 4.7$, 3 in. focus and Compur Shutter
- Five times Yellow Glass Filter
- Leather carrying case



ICA CAMERAS



Description of the Icalette C and D, Ica-Halloh and Ica-Lloyd:

Ica roll film cameras are characterized by their strong, durable, compact construction. The sliding bed with the U-shape front is an exclusive Ica feature, insuring a very rigid front, or lens support free from any vibration or play. This is most important, particularly in a camera fitted with an anastigmat lens, as the advantage in a high quality objective is partly in its ability to render microscopic detail and it is obvious that the lens cannot work to its best advantage if the camera front has any lost motion. This is even more important with small cameras, as the variation of one sixteenth of an inch would be far more detrimental to the small negative than one eighth of an inch to a much larger one. This type of construction in the Icalettes, together with their many other superior features, has

ICA CAMERAS



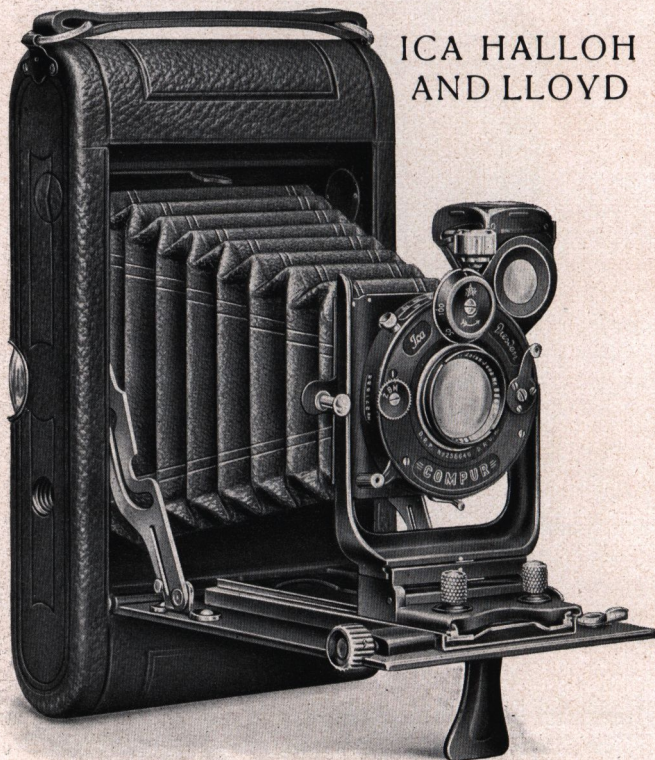
ICARETTE
Model D

given them an enviable reputation as miniature roll film cameras.

The Icarette C makes pictures on roll films $2\frac{1}{4} \times 3\frac{1}{4}$ in. in size. The camera measures over all $6\frac{1}{2} \times 2\frac{5}{8} \times 1\frac{1}{4}$ in. and weighs 23 ounces. For contact prints this size is, of course, preferable to the picture produced by the Icarette A, and at the same time the superior enlarging possibilities are retained. Having a lens of slightly greater focal length it necessitates of somewhat greater accuracy in focusing. For this reason it is essential that in focusing large cameras one must be more careful than with small ones; the larger the camera the greater the accuracy required. Focusing of the Icarette C is accomplished by moving the lever to the desired distance as shown on the focusing scale. The vertical front movement is regulated by the thumb-screw at the top of the right

ICA CAMERAS

ICA HALLOH AND LLOYD



hand upright post of the front standard. Both the Iconometer, previously described, and an indirect finder are fitted. There are horizontal and vertical tripod sockets.

The Compur Shutter, having a range of instantaneous speeds from 1 to $\frac{1}{250}$ of a second, is furnished. The method of speed control employed in the Compur Shutter insures extreme accuracy, the speeds being unaffected by changes of temperature or climatic conditions. The speeds and diaphragm markings are placed so that they may be read from the top of the camera, while the user is viewing the image in the finder. The construction of the Icarette C

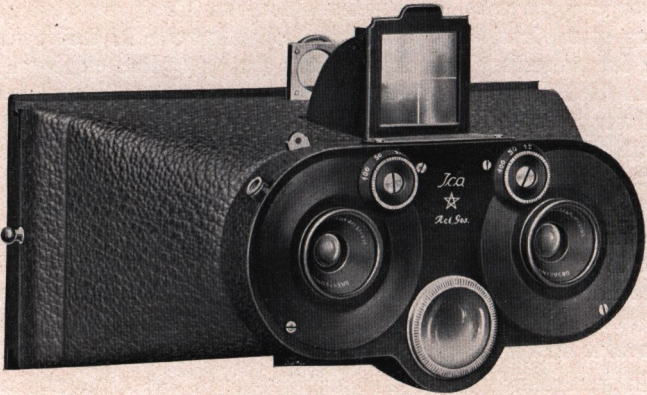
ICA CAMERAS

is of metal, and the finish is in black enamel with nickel, the body being covered with fine grain seal leather. The general specifications of the Icarette C also apply to the Icarette D, the newest of the Ica cameras. This camera uses six or twelve exposure roll films size $2\frac{1}{2} \times 4\frac{1}{4}$ in. The camera measures over all $3\frac{3}{4} \times 1\frac{1}{2} \times 8$ in. and weighs $29\frac{1}{2}$ ounces. Due to its larger size the sides of the Icarette D are of wood. It will be observed that this camera is unusually compact. An exceptional feature in a camera of this size and type is the Carl Zeiss Lens, Series Ic f:4.5, with which it is furnished. This size and type of camera equipment has been desired by many, but due to the large size of the f:4.5 lens the average camera of this type would not accommodate a lens of this aperture. The more rectangular proportions of the picture produced with the Icarette D will appeal to many, as it is conceded to be of more artistic proportions.

In general the Ica-Halloh and Ica-Lloyd are quite similar in design and construction to the Icarette D. The Ica-Halloh uses six or twelve exposure roll films size $3\frac{1}{4} \times 4\frac{1}{4}$ in., the camera measuring over all $8 \times 1\frac{3}{4} \times 4\frac{3}{4}$ in. and weighing $35\frac{1}{2}$ ounces. The Ica-Lloyd uses six or ten exposure roll films $3\frac{1}{4} \times 5\frac{1}{2}$ in. (postcard) size, measures $9\frac{1}{2} \times 1\frac{3}{4} \times 4\frac{3}{4}$ in. over all and weighs 42 ounces. Both the Ica-Lloyd and Ica-Halloh cameras have horizontal and vertical front movements, and rack and pinion focusing adjustment. Each camera is supplied with cable shutter release.

	Icarette C $2\frac{1}{4} \times 3\frac{1}{4}$	Icarette D $2\frac{1}{2} \times 4\frac{1}{4}$	Ica-Halloh $3\frac{1}{4} \times 4\frac{1}{4}$	Ica-Lloyd $3\frac{1}{4} \times 5\frac{1}{2}$
With Hekla Lens, f:6.8 and Compur Shutter . . .	f=3½ in.	f=4¾ in.	f=5¼ in.	f=6 in.
With Carl Zeiss Lens, Series IIb f: 6.3 and Compur Shutter	f=4¾ in.	f=4¾ in.	f=5¼ in.	f=6 in.
With Carl Zeiss Lens, Series Ic f: 4.5 and Compur Shutter	f=4½ in.	f=4¾ in.	—	—
Five Yellow Glass Filter Leather carrying case . . .	—	—	—	—

ICA CAMERAS



ICA STEREOFIX

Stereoscopic photography, although popular in Europe, has only within quite recent years appealed to the American photographic public, probably because American camera makers confine their stereoscopic models to large, bulky instruments as compared to the Ica Miniature Stereoscopic Cameras. This very fascinating branch of picture making produces a photograph more true to nature than by any other method, not excepting the motion picture. Nature provided us with two eyes with which we unconsciously see stereoscopically in relief. The camera, however, fitted with one lens, portrays subjects in picture form as they would be viewed with one eye. Little does the average person realize what a distinct difference there is in one eye and two eye vision until he has had the opportunity to examine a collection of stereoscopic pictures through a stereoscope. In viewing stereo pictures one is amazed to almost see around corners, and to perceive interior depths with impressive realism. So natural is the stereo view that all motion seems to have hesitated momentarily for the photographer. No collection of photographs can be of more interest than a set of stereo views. During the last few years stereoscopic photography has been used extensively in aviation.

ICA CAMERAS

Stereo pictures taken from aeroplanes show plastically the heights of buildings, land elevations, etc. The added dimension of depth doubles the realism of stereo photographs and makes stereo work one of the most fascinating branches of photography.

As a very simple, inexpensive, yet highly practical stereoscopic camera that may be depended upon to produce very satisfactory results, the Ica Stereofix is recommended. It may be used with either plates or film packs size 45×107 mm. ($1\frac{3}{4} \times 4\frac{3}{16}$ in.). For plates single metal plate holders are used. These are very light in weight, compact, and easily loaded. They are interchangeable with the film pack adapter or the focusing back. The dimensions of the Stereofix over all are $2\frac{3}{8} \times 3\frac{1}{4} \times 5\frac{3}{4}$ in., and the weight 18 ounces, comparing favorably in size and weight with a large size opera glass.

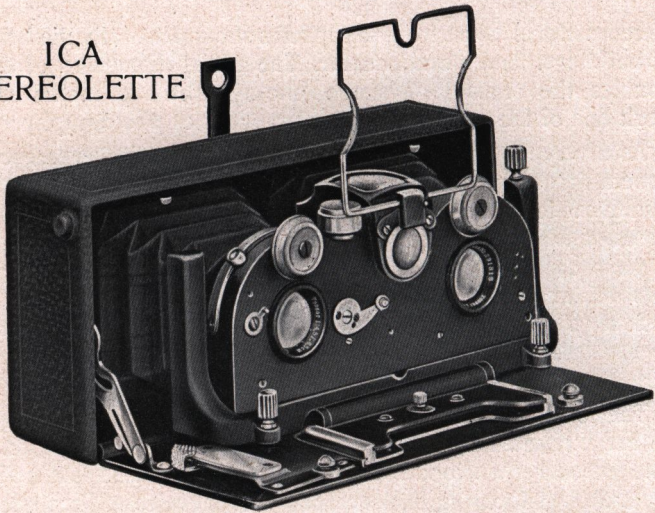
The construction is entirely of metal, covered with fine seal grain leather, exposed metal parts being black enamel with nickel trim. For time exposures a tripod socket is provided, as well as a hooded ground glass focusing back and cable shutter release. The finder, as it will be observed, is in the center directly between the two lenses. Being built in the camera, there is no possibility of its getting out of adjustment. It is of the direct as well as of the reflecting type. The cover of the reflecting finder is the front lens of the direct finder. For use it is raised and the eye-piece elevated to the proper position as shown in the illustration. The optical equipment consists of the Novar Anastigmat, $f: 6.8$ of $2\frac{3}{8}$ in. focus. It is a well corrected lens and fast enough to permit fully timed instantaneous exposures in cloudy weather or in poor light conditions. The shutter is the Ica Automatic, having instantaneous speeds of $\frac{1}{25}$, $\frac{1}{50}$, $\frac{1}{100}$ of a second, also bulb and time exposures and iris diaphragm. With each Stereofix are included three plate holders and cable shutter release.



With Novar Lenses, $f: 6.8$	
Extra plate holders, each	
Film Pack Adapter	
Magazine plate holder for 12 plates	
Leather carrying case to hold camera with 12 plate holders	
Leather carrying case to hold camera with magazine . . .	

ICA CAMERAS

ICA STEREOLETTE



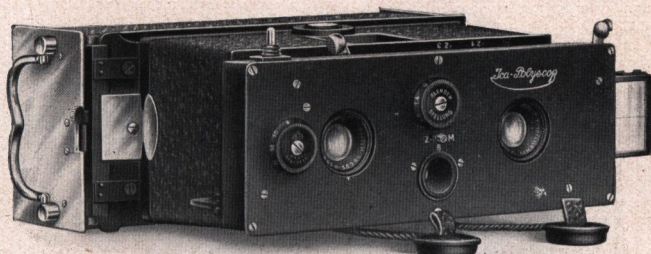
The Ica Stereolette is a somewhat more ambitious camera than the Stereofix. It makes the same size picture using plates or film packs, and may also be used with a plate magazine accomodating twelve plates. The magazine is very convenient, easily operated, and interchangeable with the single plate holders or film pack adapter.

The Stereolette is a folding camera, when closed measuring over all $3 \times 1\frac{3}{8} \times 5\frac{3}{4}$ in. and weighing $20\frac{1}{2}$ ounces. It has every possible adjustment requisite for stereo photography. From the illustration it will be observed that both Iconometer and reflecting finder are centered between the lenses. Focusing is done by means of a radial lever adjustment. When the front of the camera is extended, it locks focussed for distance and is regulated for closer objects by moving the focusing lever forward. There is a vertical front movement provided with screw adjustment, this movement being of decided advantage in many pictures when it is desired to eliminate foreground or include more at the top of a picture. The hooded focusing back provides ample light protection so that a focusing cloth is unnecessary. The Stereoscopic Comp. Shutter is furnished, having instantaneous speeds from 1 to $\frac{1}{250}$ of a second, and also being suitable for time and bulb exposures. The construction of the Stereolette is entirely of metal; and is covered with black seal grain leather. With the Stereolette are included three plate holders and cable shutter release.

With Hekla Lenses, f: 6.8, $2\frac{1}{2}$ in. foc.
 With Carl Zeiss Lenses, Series II b
 f: 6.3, $2\frac{1}{2}$ in. focus
 With Carl Zeiss Lenses, Series I c
 f: 4.5, $2\frac{1}{2}$ in. focus

Plate Magazine
 Extra plate holders, each
 Film Pack Adapter
 Leather case to hold camera and six
 plate holders or magazine . . .

ICA CAMERAS



ICA POLYSCOPE

The Ica Polyscope is without question the premier of all stereo cameras. It is constructed most accurately, of elegant appearance, and has every adjustment requisite to the best possible stereoscopic results. It also makes the popular 45×107 mm. picture. Over all it measures $5\frac{3}{4} \times 3 \times 2\frac{1}{2}$ in. and weighs 32 ounces. The body of the Polyscope is of aluminum, the extension being fixed. Focusing is accomplished by moving the focusing lever, at the top of the camera, to the desired distance. An ample rising front is provided, the effect of its elevation being indicated in the direct view finder, the same as in the Iconometer. A brilliant indirect finder is mounted between the lenses. Its position is central between the two lenses and relatively at the same elevation which insures its accuracy in close work. The Compur Shutter, having speeds up to $\frac{1}{250}$ of a second, is fitted. The lenses furnished are the Carl Zeiss Series Ic f: 4.5, of $2\frac{1}{2}$ in. focus. The Ica Polyscope may be used with single metal plate holders, magazine for twelve plates, or film pack adapter. The magazine is of very simple and practical design. It is particularly recommended for the use with the Polyscope, as it is very compact and convenient in its operation. Each Polyscope is furnished with cable shutter release and leather case.

Polyscope with six plate holders	
Polyscope with plate magazine	
Single plate holders, each	
Film Pack Adapter	
Polyscope plate magazine	
Extra septums for magazine, each	
Five times Yellow Glass Filter, each	
Leather case for Polyscope with magazine	

ICA CAMERAS

ICA
REFLEX



For many kinds of work the reflecting camera is most desirable. The decided advantage in the reflecting camera is that the image to be photographed may be viewed in the hood up to the very moment of exposure.

ICA CAMERAS

This image is formed by the same lens that makes the picture and appears identical, except for colors, to the finished print. It is of the same size, and is shown right side up. For those who have trouble in estimating distances, the reflecting camera should appeal, as it is the most perfect of all photographic range finders. The image is viewed in the hood which fits well around the eyes, and the focusing pinion on the left side of the camera is turned until the subject to be photographed appears sharp and well defined.

The image is reflected to the top of the camera by an optical mirror. Unlike the ordinary mirror it is silvered on the upper surface preventing the possibility of a double image. The front of the camera is provided with a sunshade which serves as a lens protector when the camera is closed, also with a substantial vertical front movement. Ica Reflex Cameras are furnished with Orix Anastigmats f: 4.5 or Carl Zeiss Lenses, Series Ic f: 4.5.

The focal plane shutter with which the Ica Reflex is fitted is of the fixed slit variety, has instantaneous speeds from $\frac{1}{15}$ to $\frac{1}{1000}$ of a second, besides time exposure. The shutter is of very simple design, adjustable from the outside, can be quickly operated, and is reliable.

The back of the Ica Reflex is reversible, so that it is unnecessary to turn the camera when vertical pictures are to be made. Either plates or film packs may be used. The plate holders are of blackened metal, very durable and hold one plate each. The Ica Reflex weighs from 4 lbs. 2 oz. to 4 lbs. 14 oz., and is made in the following sizes:

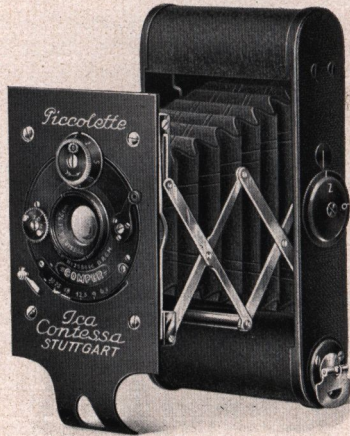
		Foci:	
		Orix Lens f: 4.5	Carl Zeiss Lens, Series Ic f:4.5
Measurements:			
A $3\frac{1}{4} \times 4\frac{1}{4}$ in. (8,3×10,8 cm)	$6\frac{3}{5} \times 5\frac{3}{5} \times 7$ in.	$6\frac{1}{2}$ in.	6 in.
B $3\frac{1}{2} \times 4\frac{3}{4}$ in. (9×12 cm)	$6\frac{4}{5} \times 6\frac{3}{5} \times 7\frac{2}{5}$ in.	$6\frac{1}{2}$ in.	6 in.
C $3\frac{1}{4} \times 5\frac{1}{2}$ in. (9×14 cm)	$6\frac{2}{5} \times 6\frac{4}{5} \times 7\frac{3}{5}$ in.	$6\frac{1}{2}$ in.	6 in.
D 4×6 in. (10×15 cm)	$6\frac{3}{5} \times 7\frac{3}{5} \times 7\frac{2}{5}$ in.	$8\frac{2}{5}$ in.	$7\frac{1}{5}$ in.



Accessories:

- Five times Yellow Glass Filter
 - Extra plate holders, each
 - Film Pack Adapter
- (specify for which camera these accessories are required)

CONTESSA CAMERAS



CONTESSA PICCOLETTE

In the Contessa Piccolette is offered a most compact miniature roll film camera of the highest quality, specially suited for ladies and those amateurs who do not wish to bother with a large camera outfit. The size of the pictures is $1\frac{3}{4} \times 2\frac{1}{2}$ in. ($4\frac{1}{2} \times 6$ centimeters). When closed the Piccolette only measures $4\frac{4}{5} \times 2\frac{1}{2} \times 1$ in. and weighs 9 ounces.

The Piccolette is beautifully finished throughout and entirely of metal, its body being of black enamelled aluminium. It is equipped with black leather bellows, metal frame finder and a Compur Shutter, working up to $\frac{1}{300}$ of a second.

CONTESSA CAMERAS

The very short focussed Carl Zeiss lens makes it possible to take photographs without estimating distances. After having pulled out the camera front, which is supported by most rigid nickeled spring arms, and locked by means of an automatic infinity catch, it is ready for exposures.

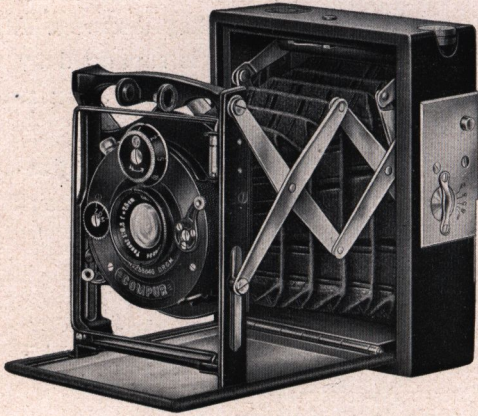
On account of its very strong, simple construction and ease of manipulation the Piccolette will appeal to anyone desiring a reliable camera for quick work.

Contessa Piccolette

- With Achromat f: 11.3 in. focus
- With Citonar Anastigmat f: 6.3, 3 in. focus
- With Teronar Anastigmat f: 5.4, 3 in. focus
- With Carl Zeiss Lens, Series IIb f: 6.3, 3 in. focus
- With Carl Zeiss Lens, Series Ic f: 4.5, 3 in. focus
- Five times Yellow Glass Filter for lenses f: 6.3 and f: 6.8
- Five times Yellow Glass Filter for Carl Zeiss Lens, Series Ic
f: 4.5
- Leather case



CONTESSA CAMERAS

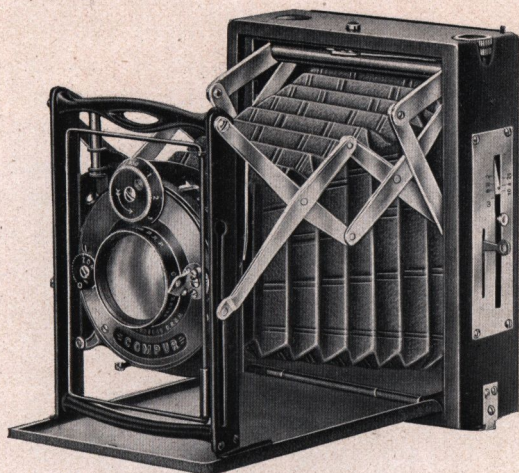


THE V. P. SONNET

is one of the smallest and most rigid Vest pocket cameras in existence, measuring over all $3\frac{1}{2} \times 1 \times 2\frac{4}{5}$ in., takes pictures $1\frac{3}{4} \times 2\frac{1}{2}$ in. ($4\frac{1}{2} \times 6$ centimeters), and weighs $10\frac{1}{2}$ ounces. Fitted with the Compur Shutter, exposures may be made in from 1 to $\frac{1}{300}$ of a second, as well as time and bulb exposures. Focusing is done before or after opening the camera by nickel plated "Nettel" spring arms. The outside of the camera body, which is exceptionally well made of mahogany, is polished and fitted with focusing scale besides a hooded ground glass back, with which the image may be observed. The V.P. Sonnet has tan leather bellows and is furnished with a metal frame permitting its use at the eye's level, a tripod socket for horizontal or vertical pictures and flexible cable shutter release. Its single extension allows focusing of near objects to as close as three feet. The camera front is of black enamel. This most beautiful looking little camera may be used with single metal plate holders or film-pack adapter, both being interchangeable. Two bags of deerskin, one for the camera itself and another for 6 plate holders are included in the prices of the different outfits.

- V. P. Sonnet with Carl Zeiss Lens, Series II b f: 6.3, 3 in. focus
- V. P. Sonnet with Carl Zeiss Lens, Series I c f: 4.5, 3 in. focus
- Extra metal plate holders, each
- Purse to hold three plate holders
- Film Pack Adapter
- Five times Yellow Glass Filter for Carl Zeiss Lens, Series II b
- Five times Yellow Glass Filter for Carl Zeiss Lens, Series I c

CONTESSA CAMERAS



THE NETTEL SONNET

is of the same type as the V.P. Sonnet described on page 38, but has a most rigid rising and falling lens front made of black enamelled brass, the size of the pictures being $2\frac{1}{2} \times 3\frac{1}{2}$ in. ($6\frac{1}{2} \times 9$ centimeters).

When closed it measures $3\frac{3}{5} \times 1\frac{4}{5} \times 4\frac{4}{5}$ in. and weighs 18 ounces. Its elegant finish and distinctive design will appeal to many especially tourists or those who prefer a small and convenient camera. The Nettel Sonnet is so compact and light that it can easily be carried in the pocket, and as a constant companion will afford many opportunities to obtain most unusual and interesting pictures that would be impracticable with a larger camera. It is also fitted with a Compur Shutter for time and bulb exposures having a range of instantaneous speeds from 1 to $\frac{1}{250}$ of a second, nickel plated Nettel spring arms, tan leather bellows and a metal frame finder for horizontal and vertical pictures. The camera body is made of well seasoned polished mahogany and is equipped with a folding focusing hood and tripod socket. Three single metal plate holders, also a cable shutter release are supplied with each camera.

Nettel Sonnet with Carl Zeiss Lens, Series II b f: 6.3, $4\frac{4}{5}$ in. focus

Nettel Sonnet with Carl Zeiss Lens, Series I c f: 4.5, $4\frac{4}{5}$ in. focus

Extra metal plate holders, each

Purse to hold three plate holders

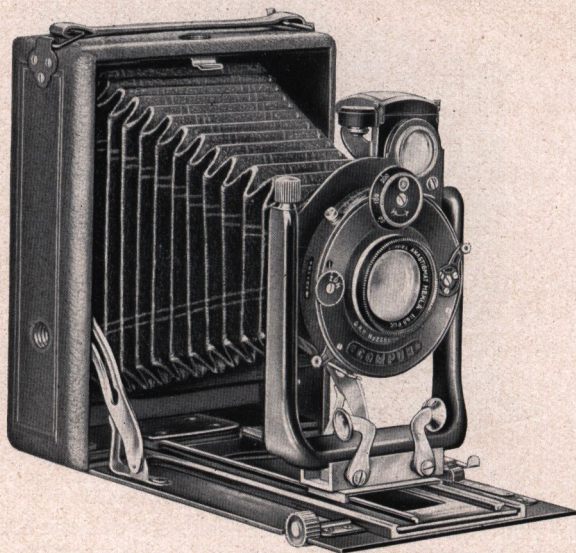
Film Pack Adapter

Five times Yellow Glass Filter for Carl Zeiss Lens, Series II b f: 6.3

Five times Yellow Glass Filter for Carl Zeiss Lens, Series I c f: 4.5

Leather case to hold camera, three plate holders and F. P. Adapter

CONTESSA CAMERAS



THE CONTESSA ALTURA

is a very popular well finished double extension camera $3\frac{1}{2} \times 4\frac{3}{4}$ in. (9×12 centimeters) for general amateur work at a moderate price, permitting the use of the rear element of the different lenses with which it is equipped. In connection with the Carl Zeiss Lens, Series IIb f: 6.3, Nostar Lenses may be used when larger pictures of distant objects are required.

The dimensions of the Contessa Altura when closed are $6 \times 1\frac{3}{5} \times 4\frac{1}{5}$ in. and the weight 29 ounces.

The bellows is of black leather, the body made of thoroughly seasoned wood, polished inside, and covered with black fine grain leather. The body is provided with large focusing hood mounted in a metal frame.

CONTESSA CAMERAS

A rack and pinion actuates the bed plate, which can be locked in any position. The Contessa Altura is also furnished with a rigid U-shaped front standard and an extra large and brilliant revolving finder with spirit level. Its rising, falling and sliding front movements permit a most desirable arrangement of the composition. Two tripod sockets for horizontal and vertical positions are also fitted.

With the well known and absolutely reliable Ibsco shutter snapshots may be made up to $\frac{1}{100}$ of a second besides time and bulb exposures, whereas when equipped with a Carl Zeiss Lens, the high speed Compur Shutter, permitting variation in exposures ranging from "time" to $\frac{1}{250}$ of a second will be furnished.

Three single metal plate holders, also a flexible cable release are supplied with each camera.

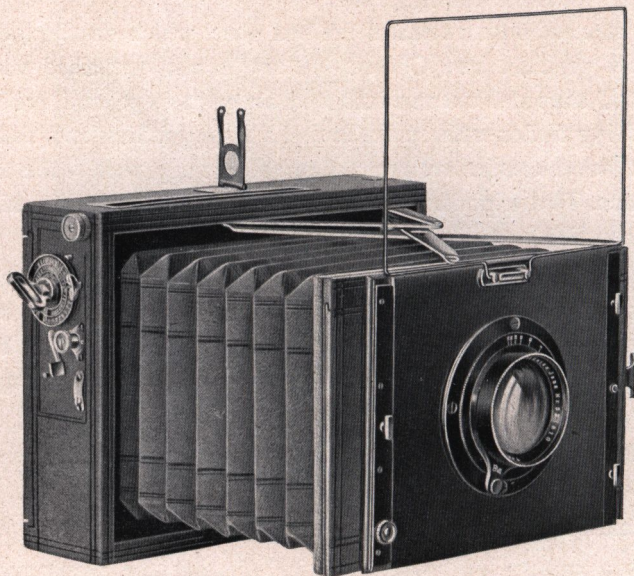
Plates or film packs may be used.

As a camera of moderate price meeting the requirements of the average amateur, the Contessa Altura is recommended.



Contessa Altura with Citonar Anastigmat, f: 6.3, $5\frac{2}{5}$ in. focus	
Contessa Altura with Teronar Anastigmat, f: 5.4, $5\frac{2}{5}$ in. focus	
Contessa Altura with Carl Zeiss Lens, Series IX f: 6.8, $5\frac{2}{5}$ in. focus	
Contessa Altura with Carl Zeiss Lens, Series IIb f: 6.3, $5\frac{2}{5}$ in. focus	
Extra metal plate holders, each
Purse to hold three plate holders
Film Pack Adapter
Nostar Lens for the use with Carl Zeiss Lens, Series IIb f: 6.3	
Five times Yellow Glass Filter
Leather case to hold camera, three plate holders and film pack adapter

CONTESSA CAMERAS



NETTEL Safety Focal Plane Cameras

These two wonderfully efficient focal plane cameras of the sizes $2\frac{1}{2} \times 3\frac{1}{2}$ in. ($6\frac{1}{2} \times 9$ centimeters) and $3\frac{1}{2} \times 4\frac{3}{4}$ in. (9×12 centimeters), on account of their portability and great range of speeds (from $\frac{1}{2}$ to $\frac{1}{2800}$ of a second and $\frac{1}{2000}$ of a second in the larger size) are specially recommended for Press work, sporting events, and races.

The workmanship throughout is of the highest quality. Especially noteworthy is the adjustable focal plane shutter which forms part of the equipment, as well as the changeable nickel plated Nettel spring arms, by which focusing is done even when the camera is closed, and which allows the use of several lenses of different foci.

The shutter is made in the form of two blinds of black flexible material absolutely light proof and impervious to dampness heat or other conditions of atmosphere. It is of the self

CONTESSA CAMERAS

copping type so that the slit is closed while the shutter is being set, thus avoiding the possibility of fogging the plate.

Opposed to other models it is fitted with a patented air wing brake and consequently works without any vibration, the regulation of the speeds and all other adjustments being made on the outside of the camera. Provision is also made for time exposures.

Should furthermore a control of the focussed picture on the screen be desirable, this may be done at any time without altering the chosen slit.

The body is well made of thoroughly seasoned wood covered with the best morocco leather. It is fitted with a hooded ground-glass back, with which the image may be observed and has a black leather bellows of $3\frac{3}{5}$ to $5\frac{1}{5}$ in. extension, sufficient to focus on very close objects.

The finder is of the direct view type, permitting the camera being held at the eye's level in operating it.

The Nettel Safety Focal Plane Cameras are equipped with the Carl Zeiss Lenses, Series IIb and IX f: 6.8 as well as Series Ic f: 4.5, insuring maximum speed and greatest illumination under trying light or atmospheric conditions.

Plates, single films, film packs or roll films, as desired, may be used.

NETTEL Safety Focal Plane Camera A

$2\frac{1}{2} \times 3\frac{1}{2}$ in. ($6\frac{1}{2} \times 9$ centimeters)

Dimensions: $4\frac{2}{5} \times 2 \times 5\frac{2}{5}$ in. *Weight:* 32 ounces

With three double wooden plate holders.

Carl Zeiss Lens, Series IX f: 6.8, $4\frac{4}{5}$ in. focus

Carl Zeiss Lens, Series IIb f: 6.3, $4\frac{4}{5}$ in. focus

Carl Zeiss Lens, Series Ic f: 4.5, $4\frac{4}{5}$ in. focus

NETTEL Safety Focal Plane Camera B

$3\frac{1}{2} \times 4\frac{3}{4}$ in. (9×12 centimeters)

Dimensions: $5\frac{3}{5} \times 2\frac{1}{5} \times 7$ in. *Weight:* $46\frac{1}{2}$ ounces

With three double wooden plate holders.

Carl Zeiss Lens, Series IX f: 6.8, 6 in. focus

Carl Zeiss Lens, Series IIb f: 6.3, 6 in. focus

Carl Zeiss Lens, Series Ic f: 4.5, 6 in. focus

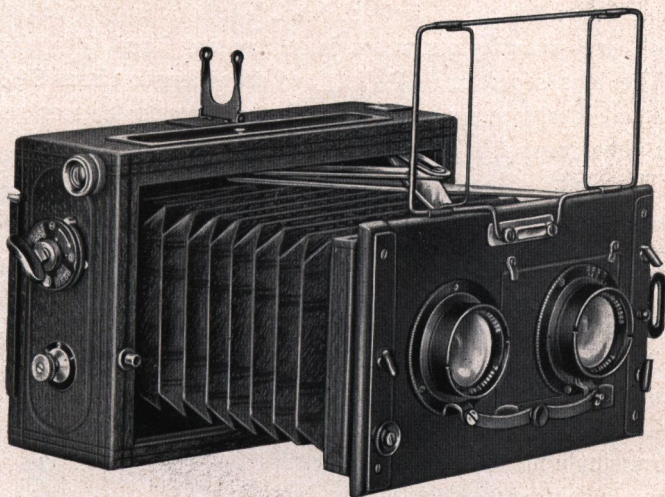
to be continued

CONTESSA CAMERAS

ACCESSORIES for *Nettel* Safety Focal Plane Cameras A and B

	A	B
Double wooden plate holders, with metal slides each		
Nettel Adapters, for the use of single metal plate holders		
Single metal plate holders, each		
Purse to hold three plate holders		
Film Pack Adapter		
Plate Magazine for 12 plates		
24 metal frames for single films		
Five times Yellow Glass Filter for lenses f: 6.3 or f: 6.8		
Five times Yellow Glass Filter for Carl Zeiss Lens, Series Ic f: 4.5		
3¼×4¼ wooden kits for 9×12 cm. wooden double plate holders		
3¼×4¼ metal kits for 9×12 cm. single metal plate holders		
Leather case to hold camera, and three wooden double plate holders		
Leather case to hold camera, six single metal plate holders, and F. P. Adapter		
—		
Roll Film Holder		
Extension Back, provision is made to fit in the lens front of the camera after having removed the lens board.—The Focal Plane Shutter therefore remains in its original position in front of the plate		
Supporting Board of the Extension Back		

CONTESSA CAMERAS



NETTEL "STEREAX"

The Nettel "Stereax" represents quite a special type of a stereoscopic camera $2\frac{2}{5} \times 5\frac{1}{5}$ in. (6×13 centimeters). It is covered with best morocco leather and furnished with a most reliable self coping focal plane shutter. All adjustments can be readily made from the outside without opening the camera in any way, and it is so simple in operation that the most inexperienced amateur is sure to make successful pictures with it from the very beginning.

Exposures can be regulated from $\frac{1}{10}$ to $\frac{1}{1200}$ of a second, and time exposures of any duration can be made. The dimensions of the Nettel "Stereax" over all are $4\frac{2}{5} \times 2 \times 7$ in. and the

CONTESSA CAMERAS

weight 39 ounces.

It is furnished with a black leather bellows and a direct metal frame finder for use at the eye's level. The back is provided with a full size ground glass, and a large focusing hood.

The lens separation ($2\frac{3}{5}$ in.) and focal length (from $3\frac{3}{5}$ to 5 in.) are ideal in every case, being selected to render the most realistic photograph it is possible to obtain.

The Nettel "Stereax" is ready for use at a moment's notice. Three single metal plate holders are supplied with each camera.

Nettel "Stereax"

with Carl Zeiss Lenses, Series Ic f: 4.5,
 $3\frac{3}{5}$ in. focus

with Carl Zeiss Lenses, Series Ic f: 4.5,
 $4\frac{4}{5}$ in. focus

Extra single metal plate holders, each

Purse to hold three single plate holders

Film Pack Adapter

Five times Yellow Glass Filter

Leather case to hold camera, three
 plate holders and F. P. Adapter . .

camera as de- scribed above	special finish for the tropics
A	B



ICA TRIPODS

SNAP TRIPOD

This Snap Tripod is constructed of fine grain thoroughly seasoned hard wood. The finish is ebonized black hand polished. Although in four sections, only the lower section is sliding. The other sections fold and snap securely into position. When fully extended, the Snap Tripod is absolutely steady and free from vibration. It can be quickly set up or taken down, as it is unnecessary to detach the head. Closed, the Snap Tripod measures 18 inches and extended 51 inches. It weighs 26 1/2 ounces.



METAL TRIPODS

These tripods are very compact, fold flat, and have a large square flat top plate which serves as a support to the camera. The legs do not fold, which also adds to its rigidity. Two sizes are furnished, the smaller one being quite compact enough to be carried in the pocket.



Favorite, five sections

Length closed	15	in.
Length extended	50	"
Weight	24 1/2	ounces

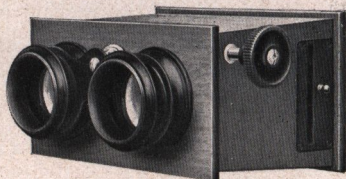
Jewel, seven sections

Length closed	11 1/2	in.
Length extended	49 1/2	"
Weight	29	ounces

ICA PHOTO ACCESSORIES

ICA STEREOSCOPE

This stereoscope is especially made for viewing 45×107 mm stereoscopic transparencies. It is constructed of thoroughly seasoned mahogany beautifully polished. The lenses are very large and are mounted in large eye cups which fit around the eyes comfortably. The picture slides in the opening at the side of the stereoscope and is locked in to prevent its falling out and possibly breaking. A fine quality ground glass is fitted at one end and evenly diffuses the light. Owners of stereoscopic cameras should have at least three of these stereoscopes so that several persons can view a collection of stereo views at the same time.



Ica 45×107 mm Stereoscope

STEREO PRINTING FRAMES

A Only for Polyscope negatives

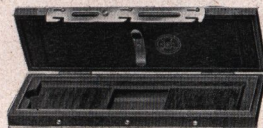
$1\frac{3}{4} \times 4\frac{3}{16}$ in.

B For all other stereo negatives

$1\frac{3}{4} \times 4\frac{3}{16}$ in.

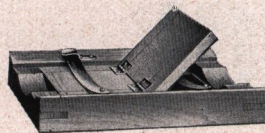
C For all other stereo negatives

$2\frac{2}{5} \times 5\frac{1}{5}$ in.



PRINTING FRAMES

Suitable for all sizes of negatives taken with one of the Ica Cameras mentioned in this list.



$1\frac{3}{4} \times 2\frac{1}{2}$ in. = 4,5 × 6 cm	$2\frac{2}{5} \times 5\frac{1}{5}$ in. = 6 × 13 cm
$1\frac{3}{4} \times 4\frac{3}{16}$ in. = 4,5 × 10,7 cm	* $3\frac{1}{4} \times 4\frac{1}{4}$ in. = 8,3 × 10,8 cm
* $2\frac{1}{4} \times 2\frac{1}{4}$ in. = 6 × 6 cm	$3\frac{1}{2} \times 4\frac{3}{4}$ in. = 9 × 12 cm
* $2\frac{1}{4} \times 3\frac{1}{4}$ in. = 6 × 9 cm	* $3\frac{1}{4} \times 5\frac{1}{2}$ in. = 9 × 14 cm
$2\frac{1}{2} \times 3\frac{1}{2}$ in. = 6,5 × 9 cm	4 × 6 in. = 10 × 15 cm
* $2\frac{1}{2} \times 4\frac{1}{4}$ in. = 6,5 × 11 cm	

* These printing frames are provided with a front glass which can also be supplied for printing frames of the other sizes mentioned above.

MIMOSA PHOTOGRAPHIC PAPERS

Mimosa Verotype Paper (Gaslight)

Best and extremely sensitive developing paper for brownish black tone with matt silky surface.

Makes independent of daylight, keeping quality, no platinum required.

For ordinary and strong negatives. Special paper for professional photographers.

Varieties of Mimosa Verotype Paper

The matt and cream varieties of Mimosa Verotype paper have the silky-shine surface of the Collodion matt paper.

- No. 1 matt, white, smooth
- „ 2 matt, white, specially soft for hard negatives
- „ 3 glossy, pale-pink, thin
- „ 6 matt, cream, smooth, thin
- „ 7 matt, cream, granulated, thickness of cardboard
- „ 8 matt, white, smooth, thickness of cardboard
- „ 9 glossy, pale-pink, thickness of cardboard
- „ 10 matt, cream, smooth, thickness of cardboard.

Mimosa Verotype Postcards (Gaslight)

- No. 7 matt, cream, granulated
- „ 8 matt, white, smooth
- „ 9 glossy, pale-pink
- „ 10 matt, cream, smooth.

Mimosa Verotype Carbon Paper (Gaslight)

A highly sensitive developing paper for the production of albumin and pigmented effects by means of carbon toner.

For original Prints and Enlargements.

Perfectly matt layer. First-class artistic effect.

With our Mimosa Verotype Carbon Paper we have produced a peculiar developing paper of great effect. It shows an ab-

MIMOSA PHOTOGRAPHIC PAPERS

solutely matt surface and in spite of the perfectly matt layer an extraordinarily ample graduation in the details.

Varieties of Mimosa Verotype Carbon Paper

- No. 26 white, thin, absolutely matt
- „ 27 white, thickness of cardboard, absolutely matt
- „ 28 cream, thin, absolutely matt
- „ 29 cream, thickness of cardboard, absolutely matt.

Mimosa Verotype Carbon Postcards (Gaslight)

- No. 27 white, absolutely matt
- „ 29 cream, absolutely matt.

Mimosa

Verotype Carbon Hand-made Paper (Gaslight)

- No. 27a white, absolutely matt, thickness of cardboard
- „ 29a cream, absolutely matt, thickness of cardboard.

Mimosa Verotype Carbon Hand-made Postcards (Gaslight)

- No. 27a white, absolutely matt
- „ 29a cream, absolutely matt.

Mimosa Carbon Toner

Perfect unchangeable Albumin and Pigment Tones.

Mimosa Carbon Toner is supplied in glass phials in the form of a powder; on being dissolved in the correct manner it gives certain results on Verotype or Verotype Carbon Paper without previous bleaching. The effects produced are of great artistic value and absolutely similar to the effects produced by matt albumin or pigment prints. When making enlargements one has the eminent

MIMOSA PHOTOGRAPHIC PAPERS

advantage of *direct* enlarging from the original negative, without being forced to prepare a diapositive and enlarged negative. *Mimosa Carbon Toning solution* is the carbon toner in its dissolved form in eight times its quantity of water. It is only necessary to dilute it with 20 to 40 times the quantity of water, both toning mediums will tone pictures prepared on all other developing papers, which have to be previously bleached.

Mimosa Platino Bromide Paper

First-class enlarging paper of established reputation.

Varieties

- A matt, smooth, white
- B matt, rough, white
- D^W glossy, white, thin
- F cream, fine grain
- I half-matt, smooth, white, thin
- L matt, smooth, white, thickness of cardboard
- M half-matt, smooth, white, thickness of cardboard
- N^W glossy, white, thickness of cardboard
- O cream, smooth, thickness of cardboard.

Mimosa Platino Bromide Postcards

- L matt, smooth, white
- M half-matt, white
- N^W glossy, white
- O cream, smooth.

Mimosa Bromoil Printing Paper

Varieties

- I white, smooth, thickness of cardboard
- II cream, smooth, thickness of cardboard.

Mimosa Aurotype Paper

Mimosa Aurotype Paper is a self-toning Collodion paper, which already contains in its substance the gold necessary for the toning, thus producing durable pictures by mere fixing process, with or without common salt. If a salt bath is used before fixing, pictures can be obtained which are in every way equal to pictures treated in goldbaths. It is possible to produce on Mimosa Aurotype paper without any difficulty all shades of colour down to violet black. Aurotype paper is absolutely permanent, if properly treated.

Varieties

- No. 1 glossy, mauve, thin
- " 2 glossy, mauve, thickness of cardboard
- " 3 matt, smooth, white, thin
- " 4 matt, smooth, white, thickness of cardboard
- " 5 matt, white, grained, thickness of cardboard
- " 6 matt, cream, grained, thickness of cardboard
- " 7 matt, cream, smooth, thickness of cardboard.

Mimosa Aurotype Postcards

- No. 2 glossy, mauve
- " 4 matt, smooth, white
- " 5 matt, white, grained
- " 6 matt, cream, grained
- " 7 matt, cream, smooth.

Mimosa Aurotype Hand-made Paper and Postcards

- No. 5a matt, white, grained
- " 6a matt, cream, grained
- " 7a matt, cream, smooth.

Price list on application.