

THE RECORD OF FIFTY YEARS .:

IT was in 1860 that JOHN HENRY DALLMEYER founded at 19 Bloomsbury Street, in the West Central district of London, the firm which bears his name. Until the beginning of 1912 one of his original workmen continued to preside over the cementing of the lenses, whilst many have completed forty years of service with the company.

Dallmeyer Lenses are now made in a model factory at Willesden, where the polishing of the lens surfaces is checked optically to an accuracy of $1/500,000$ th of an inch—probably the highest accuracy humanly attainable. This great accuracy is attained by comparing the glass in course of manufacture with a standard glass template. Between the pair of glasses wide rings of the spectrum colours are seen, and by judging the colour and number of these rings skilful workmen are able so to polish the glass that at no point does the departure from the standard exceed a half-millionth of an inch.

Correspondence and enquiries as to all kinds of apparatus are invited. Many other lenses and cameras, which cannot be listed in the small space available, are regularly made, such for instance as Dallmeyer Process, Cinematograph and Projection Lenses. A great deal of special apparatus is made to specifications furnished by customers. Estimates for new apparatus will be gladly submitted.

Write for Complete Catalogues, free on application, from

J. H. DALLMEYER, Ltd.

**Church End Works, Willesden, London, N.W.,
and 25 Newman Street, Oxford Street, W.**

Telegraphic Address:

“DALLMEYER, LONDON.”

Codes:

A.B.C., 5TH EDITION
AND PRIVATE.

Established 1860.

DALLMEYER PATENT PORTRAIT LENSES

C. F. LAN-DAVIS PATENT MOUNT, 1909.



THE extraordinary speed of Dallmeyer Patent Portrait Lenses, their keenness of definition, good covering power, careful workmanship, accurate testing, high reputation for nearly fifty years, and all-round excellence need neither description nor printed testimonial.

The latest type of mount which is protected by patent is shown in the accompanying illustration. There are no troublesome bolts to manipulate, whilst the external appearance has been greatly improved. The lens can be used either to produce exquisitely sharp results or those softer studies in which there is evenness of definition without unpleasant out-of-focus effects.

This unique adjustment is manipulated simply by rotating a portion of the lens. It is wonderfully easy to use and of the greatest value for large portraits. Quite a new power is placed in the hands of the photographer, which enables him to adjust the definition exactly as he desires. The effect is totally different from that given by a lens out of focus.

The most rapid Patent Portrait Lenses are the A and B series, both of which allow of instantaneous shutter exposures in the studio. There is little difference between these two types, the B being a little faster and the A covering a little better. Both are designed for single standing figures, large heads, and small groups in the studio. The D series, which are not expensive, are for large and small groups.

The 3B, 2A, and 3A are recommended for cabinet work, the lenses of greater focal length being preferable where conditions permit. The distance between sitter and lens for a standing figure for cabinet size with the 3B or 3D is 18-ft., or 5½ metres, with the 2A 20-ft., or 6 metres, and the 3A 24-ft., or 7 metres. The 1A and 2D require only 14-ft., or 4 metres. For carte de visite the 1B requires 12-ft., or 3½ metres, the 2B 18-ft., or 5½ metres, the 3B 25-ft., or 7½ metres.

DALLMEYER PATENT PORTRAIT LENSES

SERIES B F/3.

	PRICES.					
	Waterhouse.		Iris.			
	£	s.	d.	£	s.	d.
1B Patent, Focal Length 6-in. (150 mm.). FOR CARTE DE VISITE PORTRAITS ...	7	0	0	7	15	0
2B Patent, Focal Length 8½-in. (210 mm.). FOR CARTE DE VISITE PORTRAITS ...	12	15	0	14	0	0
3B Patent, Focal Length 11-in. (275 mm.). FOR CABINET PORTRAITS ...	19	0	0	20	10	0
4B Patent, (F/3.8) Focal Length 17-in. (430 mm.). For pictures 8½ × 6½-in. ...	38	0	0	40	10	0

SERIES A F/4.

	PRICES.					
	Waterhouse.		Iris.			
	£	s.	d.	£	s.	d.
1A Patent, Focal Length 10-in. (250 mm.). For pictures 5 × 4-in., and even Cabinet size ...	12	10	0	13	15	0
2A Patent, Focal Length 13½-in. (340 mm.). FOR CABINET PORTRAITS ...	17	0	0	18	10	0
3A Patent, Focal Length 16-in. (405 mm.). FOR CABINETS and PROMENADES and pictures up to 8½ × 6½-in. ...	26	0	0	27	10	0
4A Patent, Focal Length 18-in. (450 mm.). For pictures 10 × 8-in. and under ...	36	10	0	38	10	0
5A Patent, Focal Length 22-in. (560 mm.). For pictures 15 × 12-in. and under ...	47	10	0	49	10	0
6A Patent, Focal Length 30-in. (760 mm.). For pictures 20 × 16-in. and under ...	57	0	0	59	10	0

J. H. DALLMEYER, Ltd., Showrooms:
25 Newman St., Oxford St.

DALLMEYER PATENT PORTRAIT LENSES

SERIES D F/6.

PRICES.

	Waterhouse.	Iris.
	£ s. d.	£ s. d.
2D Patent, Focal Length 9-in. (230 mm.). For plates $6\frac{1}{2} \times 4\frac{3}{4}$ -in., or with smaller stops, 8×5 -in.	6 15 0	7 5 0
3D Patent, Focal Length 12½-in. (320 mm.). For plates $8\frac{1}{2} \times 6\frac{1}{2}$ -in., or with smaller stops, 10×8 -in.	9 0 0	9 15 0
4D Patent, Focal Length 17-in. (430 mm.). For plates 10×8 -in., or with smaller stops, 12×10 -in.	13 0 0	14 5 0
5D Patent, Focal Length 19-in. (480 mm.). For plates 12×10 -in., or with smaller stops, 15×12 -in.	16 12 6	18 2 6
6D Patent, Focal Length 24-in. (610 mm.). For plates 15×12 -in., or with smaller stops, 18×16 -in.	25 5 0	26 15 0
7D Patent, Focal Length 30½-in. (775 mm.). For plates 18×16 -in., or with smaller stops, 22×20 -in.	45 15 0	47 15 0
8D Patent, Focal Length 37-in. (940 mm.). For plates 22×20 -in., or with smaller stops, 25×21 -in.	55 10 0	58 0 0

THE DALLMEYER-BERGHEIM FOR ARTISTIC PORTRAITURE

Wonderfully soft results in true perspective.
Variable-sized pictures without moving the Camera.
Designed by an artist for the use of artists.

No.	Plate Size.	Diam. of front glass.	Intensity.	Focal Lengths.	Camera Extension.	Iris. Diaphragms
1	Cabinet & under	Ins. 2	f/6.5-f/20	Ins. 12½-36	Ins. 10-25	£ s. d. 7 15 0
2	$8\frac{1}{2} \times 6\frac{1}{2}$ to 15×12	3	f/8-f/12	25-40	15-22½	10 0 0
3	10×8 to life size	3½	f/9-f/15	35-55	12-30	12 0 0

J. H. DALLMEYER, Ltd., Agents in U.S.A.:
Burke & James, Chicago.



YOUNG CUCKOO IN REED WARBLER'S NEST

Taken by Mr. W. Bickerton with a 3D
Dallmeyer Lens.

DALLMEYER RAPID RECTILINEAR LENS F/8

This is the original R.R., having been patented by J. H. Dallmeyer in 1866. It remains an excellent lens for many purposes. The larger sizes in particular are recommended for open-air groups.

No.	Size of View or Landscape.	Diameter of Lenses.	Equivalent Focus.	PRICE, with Iris Diaphragms.
	Inches.	Inches.	Inches.	£ s. d.
1	4½ × 3½	1½	4	3 10 0
1A	4½ × 3½	1½	5½	3 15 0
2	5 × 4	1½	6	4 5 0
3	6½ × 4½	1½	8½	5 5 0
4	8 × 5	1½	10	6 0 0
5	8½ × 6½	1½	11	6 12 6
6	10 × 8	1½	13	8 10 0
7	12 × 10	2	16	10 10 0
8	13 × 11	2½	17	11 11 0
9	15 × 12	2½	19½	14 5 0
10	18 × 16	3	24	19 0 0
11	22 × 20	3½	30	25 15 0
12	25 × 21	4	33	31 10 0



TIME EXPOSURE VALVES

For use on all types of shutters, giving approximate automatic exposures of 1/25, 1/8, 1/4, 1, 2 and 3 seconds. PRICE 2/6.

DALLMEYER WIDE-ANGLE LENS F/16

This lens embraces an angle of nearly 100 deg. when used with the smallest stop and is free from distortion and flare. The large amount of light transmitted at open aperture makes arrangement of subject easy.

No.	Largest Dimension of Plate.	Diameter of Front Combination.	Back Focus.	Equivalent Focus.	PRICE.					
					Rotating Stop.			Iris Diaphragm.		
	Inches.	Inches.	Inches.	Inches.	£	s.	d.	£	s.	d.
1S	5 × 4	1½	2½	3	3	15	0	4	2	6
1AA	7 × 5	1½	3½	4	4	5	0	4	12	6
1A	8½ × 6½	1½	4½	5½	5	5	0	5	12	6
1B	10 × 8	1½	5½	6½	6	5	0	6	15	0
1	12 × 10	1½	6½	7	7	5	0	7	15	0
2	15 × 12	2	7½	8½	10	0	0	10	10	0
3	18 × 16	2½	11	13	13	5	0	14	0	0
4	22 × 20	3	14	15½	19	0	0	20	0	0
5	24 × 21	3½	17	19	28	10	0	29	15	0

J. H. DALLMEYER, Ltd., Factory: Willesden, London, N.W.

DALLMEYER CARFACS



SERIES IV. F/6.3.

Three Lenses in One

This new series, which unites good definition and high speed, is designed particularly for hand-cameras of all types. Moreover, the front half used alone gives a picture three times the usual size, and the back alone pictures half as large again as that of the complete lens.

Carfacs are manufactured to the usual high mechanical and optical Dallmeyer standard, and give excellent pictures on all types of cameras.

No.	Plate Sizes		Focal Length.	Prices in either Rigid or Sunk Mounts. Net.	Prices in Everset Shutter. Net.	
	Inches.	Inches.				
1AA	2 $\frac{1}{4}$ × 1 $\frac{3}{8}$	3	£2 2 0	£3 10 0		
1A	3 $\frac{1}{2}$ × 2 $\frac{1}{2}$	3 $\frac{3}{4}$	2 15 0	4 0 0		
1	4 $\frac{1}{2}$ × 3 $\frac{1}{2}$	4 $\frac{1}{2}$	3 0 0	4 5 0		
2	5 × 4	6	3 10 0	4 15 0		
3	6 $\frac{1}{2}$ × 4 $\frac{3}{4}$	7	4 5 0	6 5 0	Koilos	
4	7 × 5	8 $\frac{1}{2}$	5 15 0	8 3 0	"	
5	8 $\frac{1}{2}$ × 6 $\frac{1}{2}$	10	7 15 0			
6 (f/8)	10 × 8	12 $\frac{1}{2}$	8 15 0			
7 (f/8)	12 × 10	14 $\frac{1}{2}$	13 10 0			

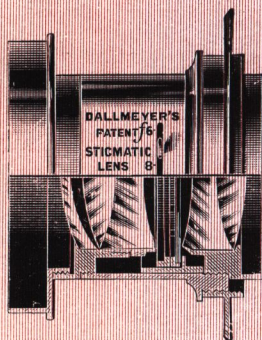
Pairing for Stereoscopic work, 6/- extra net.

J. H. DALLMEYER, Ltd., Church End Works, Willesden, London, N.W.

DALLMEYER STIGMATICS

SERIES II., $f/6$.

**EXQUISITE
DEFINITION**



**GREAT
COVERING
POWER**

Four Lenses in One.

Sharp pictures can be obtained throughout the year with a hand-camera fitted with a Dallmeyer Stigmatic, whether it be used to photograph a ship at sea, a river regatta, or a cricket match, a game of football, a long drive at golf or a horse race, the interior of a cathedral, or the latest turbine. The resulting pictures lend themselves admirably to enlargement.

Chromatic aberrations are particularly well corrected, the red, blue, and yellow images being of exactly the same size. For all colour-photography, as well as for enlarging, a better lens could not be desired.

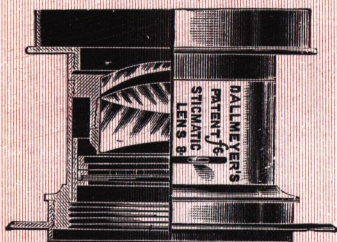
The front combination, which is fully corrected for astigmatism, gives a picture double the ordinary size, or a picture the usual size from a point twice as far away.

The back is also a useful single lens, and gives pictures midway in size between the complete lens and the front.

A Dallmeyer Stigmatic is thus a truly universal lens, uniting a rapid lens giving good definition over a large plate, a wide-angle lens, and two single lenses of different focal lengths. No other $f/6$ lens has this wonderful quality of **FOUR LENSES IN ONE.**

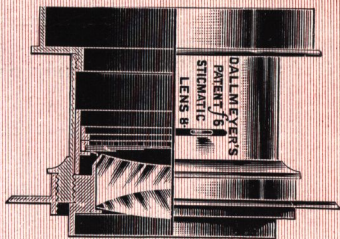
J. H. DALLMEYER, Ltd., Factory: Willesden, London, N.W.

FOUR LENSES IN ONE



Front Lens alone.

Pictures twice the usual size.



Back Lens alone.

Pictures half as large again as with the complete.

For the Professional Photographer the larger sizes should be used. They are admirable for large groups indoors and outdoors, including particularly flashlight pictures of public dinners. They may also be used for the all-round work of the studio, for outdoor subjects of every kind, for copying and for enlarging.

No.	Plate covered at full aperture <i>f</i> /6.	Largest plate covered with small stops.	Focal Length.		PRICE, with Iris diaphragms, Plain or Sunk Mounts.	PRICE, in Compound or Kollos Shutter.
			Inches.	Cm.		
1AA	2½ × 2	4½ × 3¼	3.25	8	£4 0 0	£5 15 0
1A	3¼ × 2½	5 × 4	4	10	4 5 0	6 0 0
2	3½ × 3¼	6½ × 4¾	4.5	11	4 15 0	6 10 0
3	4½ × 3½	8 × 5	5.3	13	5 15 0	7 15 0
4	5 × 4	8½ × 6½	6.4	16	6 15 0	8 15 0
5	6½ × 4¾	10 × 8	7.6	19	8 2 6	10 10 6
6	8 × 5	12 × 10	9	23	10 10 0	13 10 0
7	8½ × 6½	15 × 12	10.7	27	13 10 0	16 15 0
8	10 × 8	15 × 15	12.7	32	18 10 0	—
9	12 × 10	18 × 16	15.1	38	24 10 0	—
	15 × 12	22 × 20	18	45	31 10 0	—

Pairing for Stereoscopic work, 8/- extra nett.

J. H. DALLMEYER, Ltd., Agents in Australasia, Harringtons, Ltd., Sydney and Melbourne.

TELEPHOTOGRAPHY

IN 1891 Mr. T. R. Dallmeyer re-discovered Telephotography, and patented then and later new types of telephoto lenses. The simplest and most generally serviceable of these is the Adon Telephoto Lens. This may be used for architectural, landscape, and mountain photography, and the reproduction of all kinds of small objects, such as jewellery, insects, and the like. Under favourable circumstances snapshots may also be made with it, but for this purpose the New Large Adons, of which three new series are now issued, are to be preferred. These lenses represent a great advance in telephoto construction, as they are as simple to use as ordinary lenses, and they are of such high speed that the shortest exposures may be given with them. At the same time the pictures so obtained are on a scale two to five times as large as those obtained with an ordinary lens, so that the advantages in using them are obvious. For Press photography and for all types of reflex cameras they are to be highly recommended.

Grandac Rapid Telephoto Lenses and Dallmeyer Telephoto Attachments give good results on substantial cameras, and all calculations as to intensity and magnification are eliminated by the use of the Dallmeyer Calculator, which costs only 2/6.

Messrs. G. Routledge & Sons have just published the following book on Telephotography.

"Telephotography," by Cyril F. Lan-Davis, F.R.P.S.

Cloth 2/-, Paper 1/-. English and Foreign Postage 3d.

J. H. DALLMEYER, Ltd., Showrooms:
25 Newman St., Oxford St.

ADON TELEPHOTO LENS

New Optical Construction. Large Pictures on Small Cameras.

The Adon is a complete telephoto lens for use alone on hand, field and stand cameras from $1\frac{1}{2} \times 2\frac{1}{4}$ -in. to 15×12 -in. size. It is mounted in aluminium with rack and pinion and



HALF SIZE.

Iris diaphragms, weighs only $4\frac{3}{4}$ ozs., and is simple to work, especially when a Dallmeyer Calculator is used. At $5\frac{1}{2}$ -in. extension it covers a quarter-plate, at $8\frac{1}{2}$ -in. a half-plate, and larger sizes at proportionately longer extensions. Magnifications of two, three, four, ten, and more diameters may be obtained. At the same extension as the ordinary lens the

Adon gives a picture three times the size, and that at apertures allowing of snapshots under favourable circumstances.

The latest model gives sharp pictures over a considerable range of extension, and may be used at all extensions up to several feet. The Adon is sent out complete with flange, and thus requires no fitting, being ready for attachment to a camera front. It may also be adapted to fit an existing flange or shutter.

PRICE, including flange and solid leather case ...	£3 10 0
Foreign Postage	2 0
Burchett Colour Screen	12 6
Light Sliding Hood to increase brilliancy	2 6
Dallmeyer Calculator	2 6
Light Detachable Shutter and Dallmeyer	
Time Valve	19 6

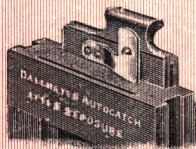
Working Instructions are sent out with each lens.



DALLMEYER AUTOCATCHES

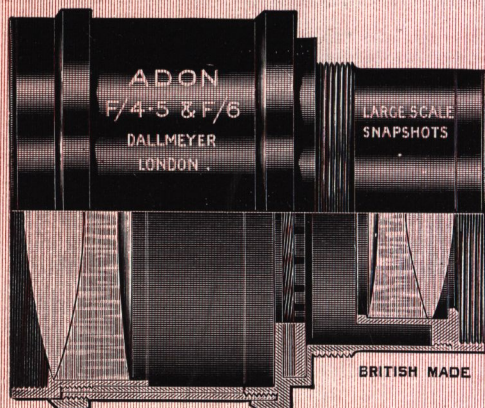
Absolutely prevent double exposure with wooden dark slides.

PRICE, per set of six with screws, in box 1/-



J. H. DALLMEYER, Ltd., Showrooms:
25 Newman St., Oxford St.

NEW LARGE ADONS



F/4.5

F/6

F/10

**Telephoto
Snapshots**

These three new series are fixed-focus, telephoto lenses, designed particularly for hand-camera snapshots on short-extension cameras. Each is complete in itself and is as simple to use as an ordinary lens. Exposures are the same as for all other lenses of the same aperture, but yet the pictures are on a scale $2\frac{1}{2}$ -4 times the usual scale. That is to say, snapshots of the players at a cricket match made 100 yards away with the New Large Adon will show the figures the same size as those made at 20 yards with an ordinary lens. The definition is good all over and the lenses are conveniently mounted in aluminium with a sliding front tube. This tube must always be pulled out before the lens is used. New Large Adons are particularly suitable for use on reflex cameras and for unconventional portraiture.

QUARTER-PLATE LENSES.

Series.	No.	Aperture.	Extension.	Focal Length.	PRICE.
VII.	2	F/10	Inches. 6	Inches. 15	£ s. d. 4 0 0
X.	2	F/6	$5\frac{1}{2}$	12	6 6 0
XI.	2	F/4.5	$5\frac{1}{2}$	12	9 9 0

HALF-PLATE LENSES.

VII.	4	F/10	8	20	7 15 0
X.	4	F/6	$7\frac{1}{2}$	17	11 0 0

THE GRANDAC F/10 RAPID TELEPHOTO LENS

This combination is designed for Telephoto Snapshots. It is invaluable for natural history work, as the photographer may keep at a considerable distance from his subject and yet obtain large images of moving subjects. The positive element is the same in both the No. 1 and No. 2 Grandac. It is of 10 inches focal length, works at $f/4$, and gives sharp or soft pictures as desired. This combination is thus not only a rapid telephoto lens of variable focal length, but provides also a large aperture lens valuable for general Press photography. This front element may of course be advantageously used for photographing races, jumping, &c.

At 6 inch extension a No. 1 Grandac gives	25 inch focal length at	$f/10$
" 8 " " " 1 " " "	30 " " "	$f/12$
" 12 " " " 1 " " "	40 " " "	$f/16$
" 9 " " " 2 " " "	28 " " "	$f/11$
" 12 " " " 2 " " "	34 " " "	$f/14$
" 20 " " " 2 " " "	50 " " "	$f/20$

and intermediate and longer focal lengths.

Price, complete in black aluminium rack and pinion mount, with Iris and sliding hood.

No. 1 Grandac for $\frac{1}{4}$ -plates	£20 10 0
No. 2 Grandac for $\frac{1}{2}$ -plates	24 0 0

DALLMEYER TELEPHOTO ATTACHMENTS

These are for use with Dallmeyer Stigmatics and other good lenses. Each gives a range of 3, 4, 7, and higher magnifications with good definition. The attachments are removable, and in no way interfere with the use of the ordinary lens. In general a negative of half the focal length of the regular lens should be chosen.

PRICE WITH RACK AND PINION MOVEMENT.

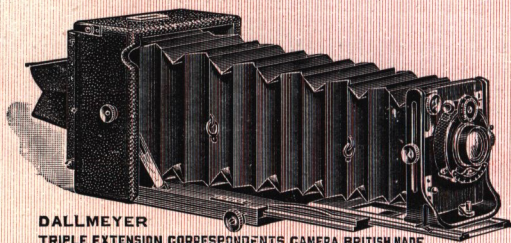
Focus of Negative Diameter	in. $\frac{3}{4}$	in. $1\frac{1}{4}$	in. 2	in. $2\frac{1}{2}$	in. 3	in. 4	in. 5	in. 6	in. 7	in. 8	in. 10	in. 12
Brass	£ 8 10 3	£ 8 10 3	£ 8 10 3	£ 8 15 3	£ 8 15 3	£ 4 10 5	£ 5 5 6	£ 6 0 7	£ 7 0 8	£ 8 10 11	£ 0 14 0	£ 8 15 10
Aluminium	4 5 4	5 4 10	4 10 5	5 5 6	6 10 7	5 8 10	10 0 12	10 15 10				

Fitting, except for very large lenses, is not charged for.

J. H. DALLMEYER, Ltd., Agents in Australasia, Harringtons, Ltd., Sydney and Melbourne.

The Correspondent's Camera

HAND AND STAND TYPE



DALLMEYER
TRIPLE EXTENSION CORRESPONDENTS CAMERA BRITISH MADE

The front is a solid aluminium casting of the well-known U form, which permits of a considerable rise of front and, in addition, there is an independent sliding panel, so that the camera provides a double rise. Accurate rack and pinion motion is provided and the centre frame slides out separately, giving very rigid triple extension. The pair of struts which hold the baseboard square to the camera are sufficiently long to allow of the baseboard being dropped for wide angle work, and a second rack and pinion motion can also be fitted for extremely short-focus lenses. A reversing frame is fitted at the back, and the focussing screen is provided with a deep hood. If it is desired to use a magnifier, the entire hood may be easily removed and as easily replaced afterwards. The double slides are of block form, loading from the bottom, with pull out sheaths, and double light traps.

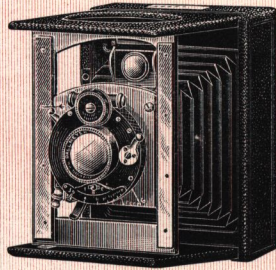
Size 4½ × 3½-in.	5 × 4-in. or	Post Card	6½ × 4½-in.	7 × 5-in. or
		15-in.	9 × 12-cm.	5½ × 3½-in.	17-in.	13 × 18-cm.
Extension	15-in.	17-in.	17-in.	23-in.	—
Camera with Three	£8 17 6	£9 10 0	£10 0 0	£11 7 6	£11 15 0
Double Dark Slides					
Fitted with Series II					
Dallmeyer Stigmatic					
in Compound or					
Koilos Shutter, bril-					
liant View Finder,					
Scale and Infinity					
Catch	£16 2 6	£17 15 0	£18 5 0	£21 3 0	£21 10 6

J. H. DALLMEYER, Ltd., Showrooms:
25 Newman St., Oxford St.

CARFAC COLLAPSING CAMERAS

Daylight Loading. British Made.

This new pocket Camera has been designed particularly for lightness, as well as convenience in handling, and absolute rigidity in use. It is daylight loading, is very simple to work, and can be opened for use instantaneously.



The $3\frac{1}{2} \times 2\frac{1}{2}$ Carfac Collapsing Camera, which weighs only 9 ozs. is, like the larger Cameras, constructed throughout of seasoned mahogany, which can be aluminium bound for warm climates. Moreover, the front of the Camera is held securely in place by grooves in both the lower and upper wings, and is thus always parallel with the plate. In most folding Cameras, the front, being supported at the base only, is frequently not perpendicular to it.

The Lens and Shutter are fixed to a sliding panel, with rising, falling, and cross motion. Focussing from a few feet to infinity is provided. The double Dark-slides are fitted with Dallmeyer Auto-catches, which absolutely prevent double exposure, and a Dallmeyer Hingeless Film Pack Adapter is fitted. The Focussing Screen has a long folding hood, which makes the composition of the picture easy, and there is a brilliant View Finder, showing both horizontal and vertical views. In the $\frac{1}{4}$ -plate and post-card sizes, this is fitted inside the Camera, which is then entirely self-contained. Spring catches, wherever possible, make manipulation very simple, and the bellows and covering are of the best leather.

Camera with Film Pack Adapter	3 $\frac{1}{2}$ -in. \times 2 $\frac{1}{2}$ -in.	4 $\frac{1}{2}$ -in. \times 3 $\frac{1}{2}$ -in.	Post Card. 5 $\frac{1}{2}$ -in. \times 3 $\frac{1}{2}$ -in.
	£ s. d.	£ s. d.	£ s. d.
Fitted with Series II. Dallmeyer Stigmatic in Compound Shutter, Speeds 1 sec. to $\frac{1}{250}$ of a sec., time and bulb	8 15 0	10 10 0	12 10 0
Fitted with Series IV. Carfac in Ibsco Shutter, Speeds 1 sec. to $\frac{1}{100}$ of a sec., time and bulb	5 18 0	7 10 0	8 15 0
Leather Case	0 14 6	0 15 0	0 17 6
Focussing Screen, and three Double Dark Slides	1 16 0	1 18 0	2 2 0
Extension ins.	$\frac{43}{16}$	$\frac{54}{16}$	7
Dimensions closed, approx. ins.	4 $\frac{1}{2}$ \times 3 $\frac{1}{2}$ \times 1 $\frac{1}{2}$	5 $\frac{1}{2}$ \times 4 \times 1 $\frac{1}{8}$	6 $\frac{1}{2}$ \times 4 $\frac{3}{8}$ \times 2 $\frac{1}{4}$
Weight of Camera (without Lens), approx. ozs.	9	15	19

J. H. DALLMEYER, Ltd., Showrooms: 25 Newnan St., Oxford St.



By Mr. Percy D. Prior.

Taken with a No. 4, Series II, Dallmeyer Stigmatic in $\frac{1}{500}$ of a second.
For particulars of Dallmeyer Lenses and Apparatus see preceding pages.