

5/20/19

J.K.



PREMO



# Premo Cameras

1919

Manufactured by

ROCHESTER OPTICAL DEPARTMENT

*Eastman Kodak Company*

ROCHESTER, NEW YORK



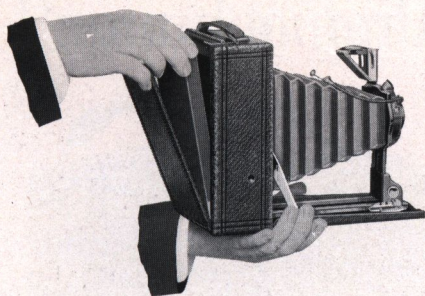
## Premo Cameras

Have been manufactured and have given continuous good service to the public for over thirty years. They not only have these long years of keen manufacturing experience behind them, but are also backed by the policy of the Eastman Kodak Company of allowing nothing to be placed on the market which will not do all that is claimed for it.

Anyone who is interested in amateur photography will find listed in this catalogue a line of plate, film pack, and roll film cameras from which a most satisfactory choice can be made, no matter what the requirements may be, and each model is efficient and dependable in every way.

Gift  
M.P.P.V.  
1963

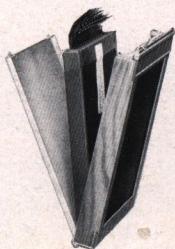




## Premo Advantages

**T**HERE are several models of Premo Cameras from which to make a selection that will meet your needs. Each model possesses a high degree of efficiency for the work for which it was designed, and is as compact in form, light in weight and as convenient to operate as painstaking care in manufacture can make it.

The practical advantages of Premo Film Packs lie in the simplicity and rapidity in daylight loading and unloading. To load, open the back of the camera, drop in the Premo Film Pack, draw the safety cover and the camera is ready for use. The exposed film is changed by drawing the consecutively numbered tabs, and the Pack is rendered light tight when the last tab is drawn. Another helpful feature is the provision for the removal of one or more films from the Pack for development before the entire Pack is exposed.



The Premo Film Pack Adapter provides for the use of film in plate cameras, and the advantage of focusing and composing each picture before exposure.

Several models of Premo Cameras that take regular Eastman Film Cartridges have been provided for those who wish to use roll film.

ROCHESTER OPTICAL DEPARTMENT,

EASTMAN KODAK CO.,

ROCHESTER, N. Y.



# Premo Junior



**S**IMPLICITY of operation makes the Premo Junior especially suitable for the beginner, but the care taken in its construction, and in the selection of lenses, recommend it to anyone desiring a reliable camera of the fixed focus type.

Focusing or estimating of distances is not required, and the shutter is always ready for immediate use. Open the back, drop in the pack, draw the safety cover, and the camera is ready for the first exposure.

## Specifications

Capacity: 12 exposures without reloading. Size of Camera: No. 1,  $3\frac{1}{8} \times 4\frac{1}{2} \times 5\frac{3}{4}$  in.; No. 1A,  $3\frac{1}{2} \times 5\frac{1}{2} \times 5\frac{7}{8}$  in.; No. 3,  $4 \times 5\frac{1}{2} \times 5\frac{3}{4}$  in. Weight: No. 1, 11 ozs.; No. 1A, 14 ozs.; No. 3, 20 ozs. Shutters: Rotary Automatic, with diaphragm stops. Lens: No. 1, Meniscus; Nos. 1A and 3, Meniscus Achromatic. Finders: two. Tripod Sockets: two.

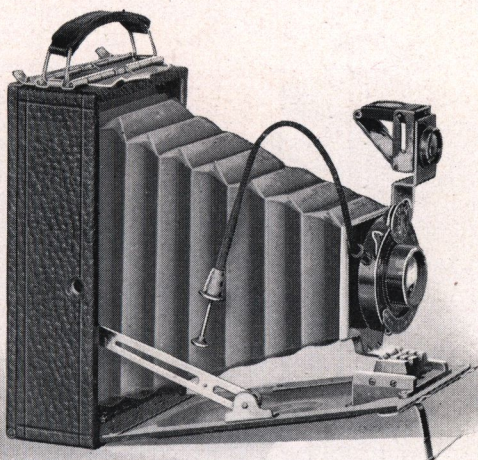
## Prices

	No. 1 $2\frac{1}{4} \times 3\frac{1}{4}$	No. 1A $2\frac{1}{2} \times 4\frac{1}{4}$	No. 3 $3\frac{1}{4} \times 4\frac{1}{4}$
Premo Junior, as per specifications	\$2.92	\$3.71	\$4.77
Carrying Case	1.20	1.35	1.45
Premo Film Pack (12 exposures)	.41	.52	.72
Kodak Portrait Attachment (See page 29)	.50	.50	.50

*The Prices of Camera and Film Include the Excise War Tax*



# Premoette Junior



**T**HE Premoette Junior folds into such compact form that it may be conveniently carried in the pocket, and clearly defined pictures of excellent quality may be made upon Premo Film Packs, which provide the utmost simplicity of loading, unloading and changing the exposed film.

The camera is furnished with a choice of three different lens equipments. The body is covered with genuine grain leather, and all parts are carefully finished in every detail.

## Specifications

Dimensions:  $1\frac{1}{2} \times 3 \times 4\frac{3}{4}$  in. Weight: 12 ozs. Finder: collapsible, reversible, brilliant. Tripod Sockets: two.

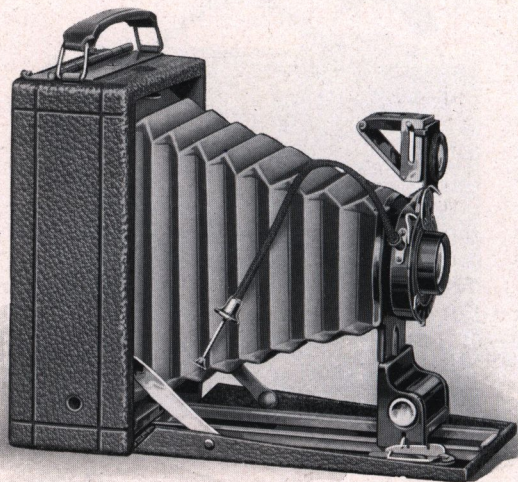
## Prices

	No. 1 $2\frac{1}{4} \times 3\frac{1}{4}$
Premoette Jr. with Meniscus Achromatic Lens and Kodak	
Ball Bearing Shutter . . . . .	\$ 8.48
With Planatograph Lens . . . . .	10.60
With Kodak Anastigmat Lens, <i>f</i> . 7.7 . . . . .	16.96
Sole Leather Carrying Case . . . . .	1.75
Kodak Portrait Attachment (See page 29) . . . . .	.50
Premo Film Pack (12 exposures) . . . . .	.41

*The Prices of Camera and Film Include the Excise War Tax*



# Premoette Senior



**D**ESIGNED to provide for the most popular amateur sizes of pictures, the Premoette Senior also embodies the advantages of compactness, simplicity of operation, and standard lens equipments. It is supplied with either R. R. Lens or the Kodak Anastigmat, *f.* 7.7. The quality of definition and covering power of this lens is equal to any anastigmat made. Purchasing this camera, the amateur assures himself not only of the microscopic definition of the finest anastigmat, but also of a greater speed than is possible with the ordinarily equipped camera.

All adjustments and special features which are not essential in making excellent pictures under average conditions of amateur photography, have been avoided in its construction, and the camera will prove highly satisfactory to those who wish to make clear, sharp, everyday pictures of the persons, things and events in which they are interested.





# Premoette Senior

The lens support, or standard, is exceptionally rigid, and is operated along the runways by means of an automatic clamp, making it an easy matter to draw the lens out to the focusing scale, where an automatic focusing lock provides for the instant focusing of objects at any distance.

The shutter is the Kodak Ball Bearing with time and bulb actions and retarded speed of 1/25, 1/50 and 1/100 seconds. It works with either cable or finger release and is unusually accurate and reliable. (See page 28.)

The Premoette Senior can be loaded very quickly in any light; just open the back of the camera, drop in the Premo Film Pack, close the back, draw the safety cover, and the first film is in position for exposure. The exposed film is changed by drawing the successively numbered tabs.

Premoette Seniors are covered with genuine leather of selected grain, metal parts are finished in nickel and black lacquer. When fitted with Kodak Portrait Attachment the pleasing proportions of the pictures make these cameras excellent for home portraiture.

Carefully made in every particular, the Premoette Senior is offered at as low a price as is consistent with quality and reliability.

## Specifications

Capacity: 12 exposures. Box: seasoned wood. Bed and Back: aluminum. Dimensions:  $2\frac{1}{2} \times 4\frac{1}{4}$ ,  $1\frac{7}{8} \times 3\frac{5}{8} \times 5\frac{5}{8}$  in.;  $3\frac{1}{4} \times 4\frac{1}{4}$ ,  $1\frac{1}{8} \times 4\frac{1}{8} \times 5\frac{5}{8}$  in.; 3A,  $3\frac{1}{4} \times 5\frac{1}{2}$ ,  $2\frac{1}{4} \times 4\frac{1}{2} \times 7\frac{7}{8}$  in. Weight:  $2\frac{1}{2} \times 4\frac{1}{4}$ , 21 ozs.;  $3\frac{1}{4} \times 4\frac{1}{4}$ , 22 ozs.; 3A,  $3\frac{1}{4} \times 5\frac{1}{2}$ , 35 ozs. Lens: Rapid Rectilinear. Shutter: Kodak Ball Bearing, with cable release (see page 28). Tripod sockets: two. Finder: reversible, brilliant, collapsible. Automatic standard clamp. Automatic focusing lock.

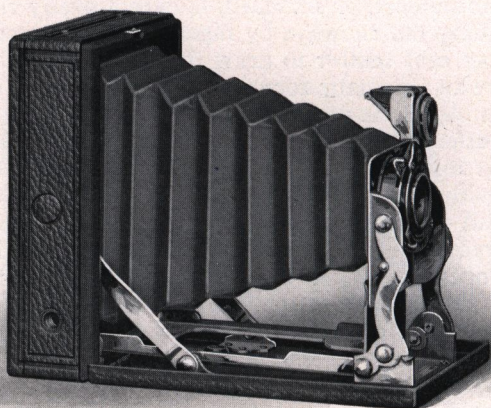
## Prices

	$2\frac{1}{2} \times 4\frac{1}{4}$	$3\frac{1}{4} \times 4\frac{1}{4}$	3A $3\frac{1}{4} \times 5\frac{1}{2}$
Premoette Sr. with R. R. Lens and Kodak Ball Bearing Shutter	\$13.25	\$13.25	\$16.96
With Kodak Anastigmat Lens, f. 7.7	19.61	19.61	23.32
Sole Leather Carrying Case	2.75	2.75	3.50
Premo Film Pack (12 exposures)	.52	.72	.83
Kodak Portrait Attachment (See page 29)	.50	.50	.50

*The Prices of Camera and Film Include the Excise War Tax*



# Pocket Premo



**E**XTREME compactness, rapidity and simplicity of loading and operating are specially featured with this attractive little camera.

No focusing or estimating of distances is required. The front standard, bearing the lens and shutter, automatically unfolds and is extended and locked rigidly in focusing position when the bed of the camera is drawn down.

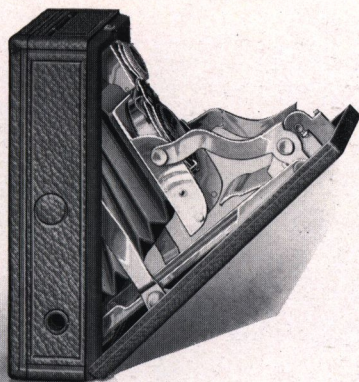
The Pocket Premo may be brought into action very quickly, and for that reason unusual and interesting pictures may be secured that would be lost if adjustment of focus were necessary. The camera is closed by pressing the two side arms and raising the bed, which causes the bellows and entire front to compactly refold within the camera body.

This little camera makes  $2\frac{1}{4} \times 3\frac{1}{4}$  pictures upon Premo Film Packs, and when closed, it has about the same dimensions as two  $2\frac{1}{4} \times 3\frac{1}{4}$  Film Packs.

Maximum compactness in the construction of this model is obtained by means of the Collapsible Back, which may be quickly extended to receive the Premo Film Pack, containing 12 exposures. After the Pack has been placed in position in the camera, the safety cover protecting the first exposure, is drawn.



# Pocket Premo



The Meniscus Achromatic Lens fitted to the camera is carefully tested and adjusted, and will produce negatives of excellent quality, from which enlargements many times the size of the contact print may easily be made.

The smooth working Kodak Ball Bearing Shutter, supplied, provides for speeds of 1/25 and 1/50 of a second, as well as time and bulb exposures.

The Pocket Premo is covered with a fine quality of grain leather, and all metal parts are finished in nickel.

## Specifications

Capacity: 12 exposures without reloading. Size of picture:  $2\frac{1}{4} \times 3\frac{1}{4}$ . Dimensions:  $1\frac{1}{4} \times 3\frac{1}{4} \times 4\frac{1}{16}$ . Weight: 18 ozs. Shutter: Kodak Ball Bearing. Lens: Meniscus Achromatic. Finder: Collapsible. Tripod Sockets: two.

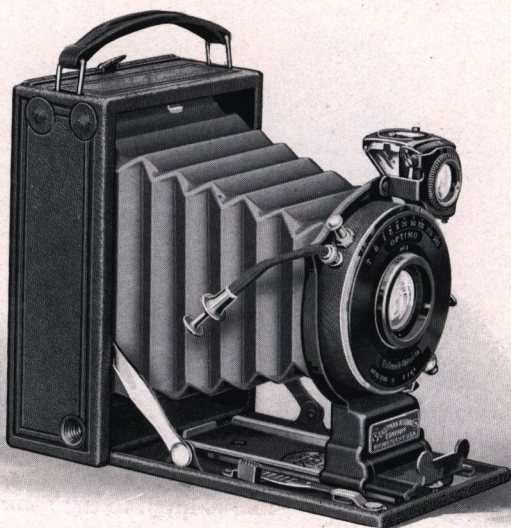
## Prices

Pocket Premo with Meniscus Achromatic Lens and Kodak Ball Bearing Shutter	$2\frac{1}{4} \times 3\frac{1}{4}$	\$10.60
Carrying Case to hold camera and Premo Film Pack		1.20
Premo Film Pack (12 exposures)		.41
Kodak Portrait Attachment (See page 29)		.50

*The Prices of Camera and Film Include the Excise War Tax*



# Premo No. 12



**H**ERE is a thin, smooth, handsomely finished camera, cleverly designed to offer every essential feature for making the best of pictures under greatly varied conditions of amateur photography—a camera that provides for the user exceptional photographic efficiency.

The  $2\frac{1}{4} \times 3\frac{1}{4}$  pictures may be made upon Premo Film Packs, the brand of plates best suited to the subject, or Graflex Roll Films used in the special Roll Holder made to fit the camera.

Another feature of the Premo No. 12 is the provision for accurate focusing and arrangement of the composition of every picture made. This construction is decidedly helpful in attaining the required pictorial effect. If direct focusing and composition of the full size picture is not essential, the lens is set on the Focusing Scale at a point indicating the estimated distance of the subject.

With the high speed Anastigmat Lens and Optimo Shutter equipment, permitting variation in exposures ranging from





# Premo No. 12

"time" to 1/300 of a second, it is easily possible to obtain successful pictures of unusual and interesting subjects, difficult to procure with other types of fittings.

The Premo No. 12 is regularly fitted with the Kodak Anastigmat *f.* 6.3 Lens and Optimo Shutter. It is also supplied with a choice of other types of high grade anastigmat *f.* 6.3 lenses, as listed.

Where a lens of extreme rapidity is required, the B. & L. Tessar, Series Ic, *f.* 4.5, Lens, will be found most effective. With such an anastigmat equipment and shutter efficiency, an almost unlimited variety of photographic work is possible—from interesting pictures of rapidly moving objects, to successful pictures made under adverse conditions of lighting, which would be difficult to procure with the average camera.

The greatest facility for loading and unloading the camera in daylight, and changing the exposed film, is provided with the Premo Film Pack.

The Premo No. 12 is so small and compact that it may be conveniently carried in the pocket. It is covered with the finest quality of grain leather, handsomely embossed, and all metal parts are finished in nickel and black enamel.

## Specifications

Size of picture:  $2\frac{1}{4} \times 3\frac{1}{4}$ . Capacity: 12 film or one plate exposure. Box: aluminum. Bed: aluminum, with special lever focusing device. Finder: reversible, with revolving mask. Tripod sockets: two. Lens: As per price list. Shutter: Optimo or Kodak Ball Bearing as per price list. Dimensions:  $1\frac{5}{8} \times 3\frac{1}{4} \times 4\frac{5}{8}$  in. Weight: 24 ozs.

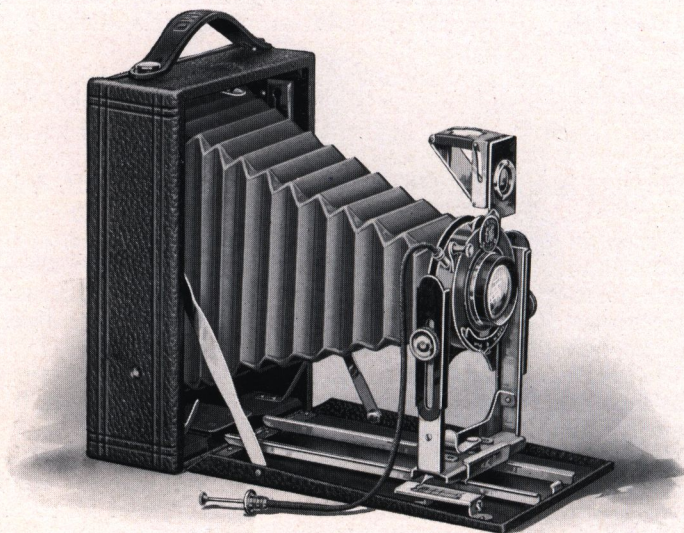
## Prices

	$2\frac{1}{4} \times 3\frac{1}{4}$
Premo No. 12 with Kodak Ball Bearing Shutter and R. R. Lens, including Film Pack Adapter and one Plate Holder . . .	\$19.61
With Kodak Anastigmat Lens, <i>f.</i> 7.7 . . .	25.97
With Optimo Shutter and Kodak Anastigmat Lens, <i>f.</i> 6.3, $4\frac{3}{8}$ -inch focus . . .	45.58
With B. & L. Kodak Anastigmat Lens, <i>f.</i> 6.3, $4\frac{5}{8}$ -inch focus . . .	58.83
With B. & L. Tessar, Ser. IIb Lens, <i>f.</i> 6.3, $4\frac{5}{8}$ -inch focus . . .	71.55
With B. & L. Tessar, Ser. Ic Lens, <i>f.</i> 4.5, $3\frac{1}{2}$ -inch focus . . .	73.67
With B. & L. Tessar, Ser. IIb Lens, <i>f.</i> 6.3, $3\frac{3}{8}$ -inch focus, and Compound Shutter . . .	48.76
Carrying Case, velvet lined . . .	3.25
Single Plate Holder, each . . .	.60
Premo Film Pack, 12 exposures . . .	.41
Special Roll Holder, interchangeable with Plate Holder . . .	11.00

*The Prices of Camera and Film Include the Excise War Tax*



# Premo No. 8



A CAMERA for the amateur who wishes to undertake more serious photographic work. Every picture made may be accurately focused and composed upon the focusing screen. The rising and falling fronts permits the most desirable arrangement of the composition. While direct focusing is desirable, it is not always convenient or possible, and the lens in such cases may be focused with the graduated scale, the picture being centered with the view finder, which is of the reversible and collapsible type.

Plates or film, whichever is most convenient or best suited to the character of the subject, can be used interchangeably. Plates are loaded into a regular Plate Holder, and by means of the Premo Adapter and Premo Film Packs, the camera is converted into a daylight loading instrument with all the advantages of film convenience.

The Premo No. 8 is regularly supplied with the Standard Planatograph R. R. Lens. At a slight additional charge, the





# Premo No. 8

$3\frac{1}{4} \times 5\frac{1}{2}$  (post card) size camera is furnished with the Kodak Anastigmat Lens, *f.* 7.7, providing greater speed and excellent definition.

Premo No. 8 is equipped with the Kodak Ball Bearing Shutter, graduated for speeds of 1/25, 1/50 and 1/100 seconds, as well as for bulb and time exposures.

The body of the camera is made of seasoned wood, with front bed of aluminum and metal runways. The bed and body are covered with black grain leather; the bellows is black and the metal parts are finished in nickel, giving the camera a neat, attractive appearance.

The Premo No. 8 is made for the three larger popular sizes of pictures—the  $3\frac{1}{4} \times 5\frac{1}{2}$ , the 4 x 5 and the 5 x 7. Contact prints of these sizes are as large pictures as the amateur ordinarily desires, but enlargements of practically any size may be made from the negatives. The proportions of these sizes are exceptionally well suited for figure work. When the camera is fitted with the Kodak Portrait Attachment, and the composition is focused and adjusted upon the ground glass for focusing, the Premo No. 8 is unusually effective for home portraiture.

## Specifications

Capacity: 12 film or 2 plate exposures. Box: kiln-dried wood, covered with leather. Standard: made of metal, with rising and falling front. Carrying Case: imitation leather, with compartments for holders. Finder: reversible, brilliant, collapsible. Tripod Sockets: two. Lens: Planatograph. Shutter: Kodak Ball Bearing with cable release (See page 28). Dimensions:  $3\frac{1}{4} \times 5\frac{1}{2}$ , 2 x 5 x  $7\frac{1}{4}$  in.; 4 x 5, 2 x  $5\frac{1}{4} \times 6\frac{1}{2}$  in.; 5 x 7,  $2\frac{1}{4} \times 6\frac{1}{2} \times 8\frac{1}{2}$  in. Weight:  $3\frac{1}{4} \times 5\frac{1}{2}$ , 34 ozs.; 4 x 5, 30 ozs.; 5 x 7, 42 ozs.

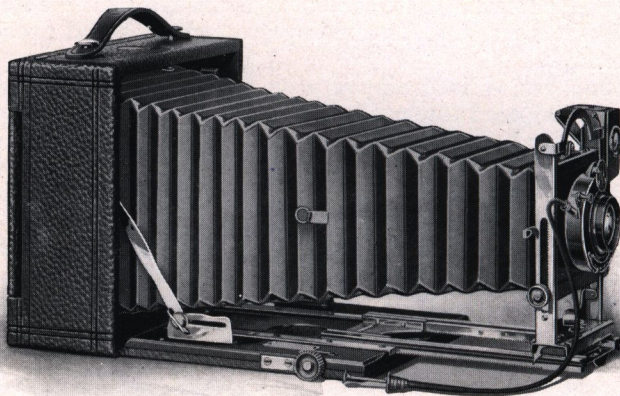
## Prices

	4x5	<sup>3A</sup> $3\frac{1}{4} \times 5\frac{1}{2}$	5x7
Premo No. 8, with Planatograph Lens, Kodak Ball Bearing Shutter, Carry- ing Case and Plate Holder . . . . .	\$21.11	\$21.11	\$29.03
With Kodak Anastigmat Lens, <i>f.</i> 7.7 . . . . .		27.47	
Premo Film Pack Adapter . . . . .	2.00	2.00	3.00
Premo Film Pack (12 exposures) . . . . .	.93	.83	1.65
Kodak Portrait Attachment (See page 29) . . . . .	.50	.50	.50

*The Prices of Camera and Film Include the Excise War Tax*



## Premo No. 9



**T**HIS camera is provided with the mechanical adjustments and bellows capacity essential to a wider application of photography than is possible with any of the preceding models of Premo Cameras.

The swing bed permits the operator to make pictures of tall buildings, and the like, without tilting the camera, thereby permitting true alignment of the subject.

A further aid to correct photographic reproductions of architectural subjects or general views, is provided with the rising and falling front, whereby the picture is properly centered upon the focusing screen.

Vertical or horizontal pictures, whichever is most suitable to the composition, may be made by means of the Premo reversible back, which accepts Plate Holders or the Premo Film Pack Adapter.

The bellows is of black leather, and has sufficient draw to permit the use of the whole lens for making very nearly full size copies, and accommodates as well, the long focus single combination, when a larger picture of distant objects is required. A rack and pinion actuates the bed plate, which is locked in any position by a simple device.

The front standard of the Premo No. 9 is constructed of wood and is very rigid. The lens board is removable.



# Premo No. 9

The regular lens and shutter equipment comprises the Kodak Ball Bearing shutter and the Planatograph lens—a perfectly satisfactory equipment for every-day amateur photography.

In the 3A and 4 x 5 sizes the camera is offered at a slight increase in price, fitted with the new Kodak Anastigmat lens, *f.* 7.7. For those who wish an anastigmat of even greater speed, it is supplied with the new Kodak Anastigmat lens working at *f.* 6.3 and the Optimo shutter with cable release. There is also a choice of several other high speed anastigmat fittings.

The instrument is of the most substantial construction, all working parts operate with mechanical precision and it is finished in the most careful manner. The covering is of specially selected black grain leather, the bed is finished in black and the metal parts are heavily nickered. The new Premo collapsible, brilliant finder is fitted to all models.

## Specifications

Capacity: 12 film or 2 plate exposures. Box: selected hard wood, covered with fine grain leather. Bed: hand polished wood, finished in black, and supplied with rack and pinion for fine focusing, and swing arrangement. Back: spring catch, reversible. Standard: made of metal, with rising and falling front. Finder: brilliant, reversible, collapsible. Tripod Socket: one. Lens: Planatograph. Shutter: Kodak Ball Bearing (See page 28). Bellows: black leather; draw, 3¼ x 5½, 13 in.; 4 x 5, 13 in.; 5 x 7, 15¼ in. Dimensions: 3¼ x 5½, 3 x 7 x 7 in.; 4 x 5, 3 x 7 x 7 in.; 5 x 7, 2⅞ x 8¼ x 8¼ in. Weight: 3¼ x 5½, 63 ozs.; 4 x 5, 63 ozs.; 5 x 7, 76 ozs.

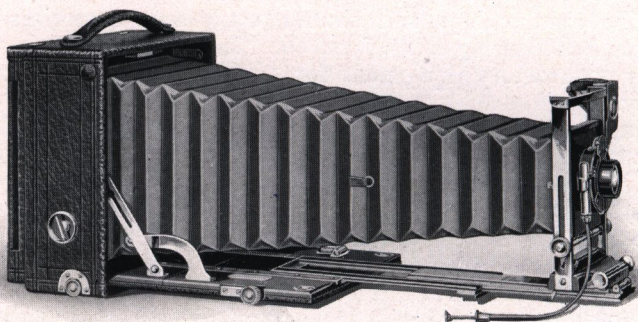
## Prices

	4x5	3A 3¼x5½	5x7
Premo No. 9, with Planatograph Lens, Kodak Ball Bearing Shutter, Case and Holder	\$40.10	\$40.10	\$47.49
With Kodak Anastigmat Lens, <i>f.</i> 7.7	46.46	46.46	
With Kodak Anastigmat Lens, <i>f.</i> 6.3, and Optimo Shutter	68.72	68.72	
With B. & L. Kodak Anastigmat Lens, <i>f.</i> 6.3 and Optimo Shutter	81.44	84.88	110.03
Premo Film Pack Adapter	2.00	2.00	3.00
Premo Film Pack (12 exposures)	.93	.83	1.65
Kodak Portrait Attachment (See page 29)	.50	.50	.50

*The Prices of Camera and Film Include the Excise War Tax*



# Premo No. 10



**D**ESIGNED to meet the requirements of technical photographic work, the Premo No. 10 is equipped with every mechanical adjustment required.

The long bellows draw will accommodate the single combinations of any lens system. Wide angle lenses may be used by dropping the bed and substituting the short supplementary bed furnished with the camera. The swing back and rising and falling front permit the correct composition of architectural subjects. Films or plates may be used with equal facility.

## Specifications

Capacity: 12 film or 2 plate exposures. Box: selected hard wood, leather covered. Bed: wood, highly polished black finish. Back: spring catch, reversible. Swing: vertical; rack and pinion actuated, with locking device. Front: rising and falling rack and pinion actuated with locking device. Lens Board: removable, size  $3\frac{1}{2} \times 3\frac{1}{2}$  in. Finder: Brilliant, reversible. Tripod Sockets: two. Carrying Case: sole leather, plush lined, with compartments for holders. Bellows: black leather; draw, 19 in. Dimensions:  $4 \times 8\frac{1}{2} \times 8\frac{1}{2}$ . Weight:  $5\frac{1}{2}$  lbs.

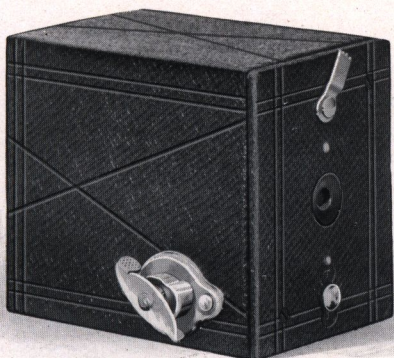
## Prices

	5x7
Premo No. 10, with Planatograph Lens and Kodak Ball Bearing Shutter, Carrying Case and Plate Holder	\$ 86.20
With Bausch & Lomb Kodak Anastigmat Lens, <i>f.</i> 6.3, and Optimo Shutter	149.27
With B. & L. Protar VIIa Lens, <i>f.</i> 7, and Optimo Shutter	190.08
Premo Film Pack Adapter	3.00
Premo Film Pack	1.65

*The Prices of Camera and Film Include the Excise War Tax*



# Cartridge Premo No.00



**T**HIS little camera was made especially for the youngsters, and has proven a source of pleasure for many thousands of boys and girls throughout the country. Photography is interesting and instructive. There is not only the fun every boy and girl will find in making pictures of their companions, games, and the like, but it is helpful in developing the observation and appreciation of pictorial art.

The camera is covered with a lasting quality of imitation leather, and is fitted with an Automatic Shutter and first quality Meniscus Lens, carefully tested. It loads with a special 6 exposure cartridge, and while this is not N. C. Film, it is of the standard Eastman quality.

## Specifications

Size of pictures:  $1\frac{1}{4} \times 1\frac{3}{4}$  in. Capacity: 6 exposures without reloading. Size of camera:  $2 \times 2\frac{5}{8} \times 3\frac{1}{8}$  in. Lens: Meniscus,  $\frac{2}{4}$ -inch focus. Shutter: Automatic for time and snap shot exposures.

## Prices

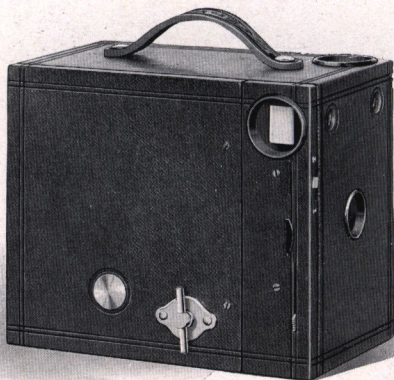
Cartridge Premo No. 00, Meniscus Lens and Automatic Shutter	\$1.06
Eastman Film Cartridge, 6 exposures, No. 35	.11

*The Prices of Camera and Film Include the Excise War Tax*



# Cartridge Premos

## Nos. 2 and 2A



**T**HESE cameras require no focusing or estimating of distances. They take regular Eastman N. C. film cartridges, which may be loaded, unloaded and developed in full daylight, and will appeal especially to those who wish to make pictures or roll film in the easiest way and at the minimum of expense.

The cameras are equipped with automatic shutters, working for time or "snap shot" exposures, and will make negatives of a quality that yield good enlargements up to any reasonable size.

### Specifications

Size of pictures: No. 2,  $2\frac{1}{4} \times 3\frac{1}{4}$  in.; No. 2A,  $2\frac{1}{2} \times 4\frac{1}{4}$  in. Capacity: No. 2, 6 exposures without reloading; No. 2A, 12 exposures without reloading. Size of camera: No. 2,  $5\frac{5}{8} \times 4 \times 3\frac{1}{4}$  in.; No. 2A,  $3\frac{1}{8} \times 5\frac{1}{8} \times 6\frac{1}{8}$  in. Weight: No. 2, 13 ozs.; No. 2A, 21 ozs. Lens: No. 2, Meniscus; No. 2A, Meniscus Achromatic. Shutter: Eastman Rotary, with three stops. Two finders.

### Prices

	No. 2	No. 2A
Cartridge Premo, as per specifications . . . . .	\$2.92	\$3.71
Carrying Case, with shoulder strap . . . . .	1.20	1.40
N. C. Film Cartridge, 12 exposures (No. 116) . . . . .		.52
Ditto, 6 ex. (No. 120 for No. 2; No. 116 for No. 2A) . . . . .	.21	.26
Kodak Portrait Attachment (See page 29) . . . . .	.50	.50

*The Prices of Camera and Film Include the Excise War Tax*



# No. 2C Cartridge Premo



THE  $2\frac{7}{8} \times 4\frac{7}{8}$  size is a new proportion for amateur pictures which was recently introduced. Its shape is pleasing, and it lends itself to artistic composition.

In design this camera follows closely that of the 2 and 2A models, and likewise loads with Eastman N. C. Film, offering all the advantages of day-light-all-the-way photography.

The 2C is a reliable camera, and extremely simple to operate, as focusing or estimating of distances is not required.

## Specifications

Size of pictures:  $2\frac{7}{8} \times 4\frac{7}{8}$  in. Capacity: 10 exposures without re-loading. Size of camera:  $3\frac{3}{8} \times 6 \times 7\frac{1}{4}$  in. Weight: 25 ozs. Lens: Meniscus Achromatic,  $5\frac{1}{2}$ -inch focus. Shutter: Eastman Rotary, with three stops. Two finders. Two tripod sockets.

## Prices

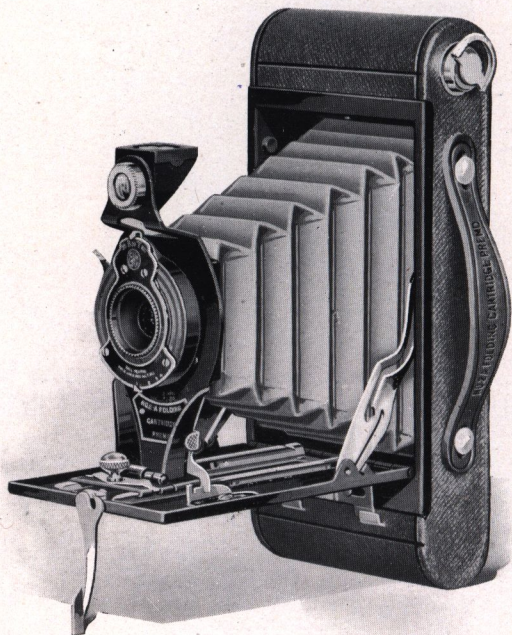
No. 2C Cartridge Premo, Meniscus Achromatic Lens, Eastman Rotary Shutter . . . . .	\$4.77
Carrying Case with shoulder strap . . . . .	1.50
N. C. Film Cartridge, 10 exposures (No. 130) . . . . .	.62
Ditto, 6 exposures . . . . .	.36
Kodak Portrait Attachment (See page 29) . . . . .	.50

*The Prices of Camera and Film Include the Excise War Tax*



# Folding Cartridge Premos

## Nos. 2 and 2A



THE practical simplicity of operation, compactness and attractive appearance of the Folding Cartridge Premo, will appeal to those desiring a properly equipped, inexpensive camera that meets the requirements of amateur picture making.

These Premos are constructed on a very simple principle for loading and unloading in daylight, with the Eastman N. C. Film Cartridge.

The excellent quality of the pictures produced by the Folding Cartridge Premos, combined with the





# Folding Cartridge Premos

## Nos. 2 and 2A

ease of operation, have resulted in its being established as a most popular model.

Alike in general appearance and operation, the 2 and 2A models differ in the size of the pictures they make and slightly in lens and shutter equipment. The No. 2 is regularly fitted with a meniscus lens and the No. 0 Kodak Ball Bearing shutter. This shutter has time and bulb exposure actions and instantaneous speeds of  $1/25$  and  $1/50$  second. The No. 2A is regularly fitted with a meniscus achromatic lens and the No. 1 Kodak Ball Bearing shutter without cable release. This shutter has the same actions and speeds of the No. 0 and in addition, the faster speed of  $1/100$  second. Both cameras are also offered with R. R. lens. Either size may be carried in the pocket.

The Eastman N. C. Film Cartridge may be developed in the Kodak Film Tank; no dark room is necessary for any step.

### Specifications

No. 2: Size of pictures,  $2\frac{1}{4} \times 3\frac{1}{4}$  in. Capacity: 6 exposures without reloading. Size of camera:  $1\frac{1}{4} \times 3\frac{3}{8} \times 6\frac{1}{2}$  in. Weight: 19 ozs. Lens: Meniscus Achromatic,  $3\frac{1}{2}$ -inch focus. Also supplied with Rapid Rectilinear Lens, if desired. Shutter: Kodak Ball Bearing. Reversible finder, two tripod sockets, automatic focusing lock, black leather bellows.

No. 2A: Size of pictures,  $2\frac{1}{2} \times 4\frac{1}{4}$  in. Capacity: 12 exposures without reloading. Size of camera:  $1\frac{1}{8} \times 3\frac{3}{8} \times 7\frac{7}{8}$  in. Weight: 25 ozs. Lens: Meniscus Achromatic,  $4\frac{1}{4}$ -inch focus. Also supplied with Rapid Rectilinear Lens, if desired. Shutter: Kodak Ball Bearing (See page 28). Reversible finder, two tripod sockets, automatic focusing lock, black leather bellows.

### Prices

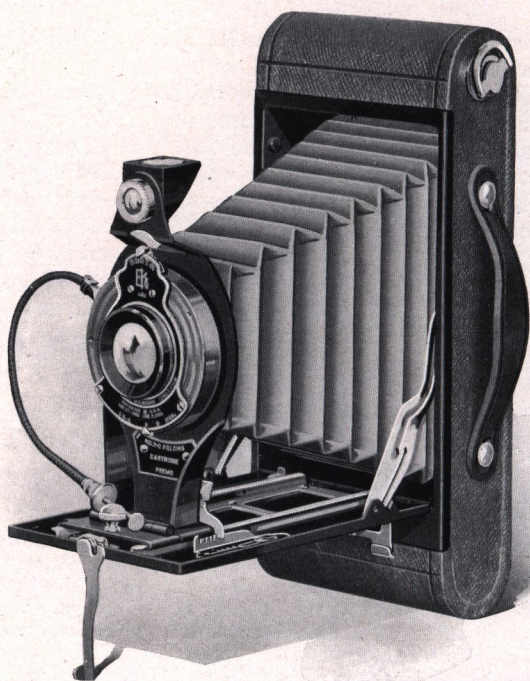
	No. 2	No. 2A
Folding Cartridge Premo as per specifications . . . . .	\$ 7.42	\$ 8.48
With R. R. Lens . . . . .	9.01	10.60
Cartridge Premo Carrying Case . . . . .	1.40	1.50
N. C. Film Cartridge, 12 exposures (No. 116) . . . . .		.52
Ditto, 6 exposures (No. 120 for No. 2, No. 116 for No. 2A) . . . . .	.21	.26
Kodak Portrait Attachment (See page 29) . . . . .	.50	.50

*The Prices of Camera and Film Include the Excise War Tax*



# Folding Cartridge Premos

## Nos. 2C and 3A



THE success of the 2 and 2A Folding Cartridge Premos led to the introduction of two other larger models, of the same type. The No. 2C, illustrated on this page, makes  $2\frac{7}{8} \times 4\frac{7}{8}$  pictures. The No. 3A, similar to the 2C in every respect, excepting size, is for the popular  $3\frac{1}{4} \times 5\frac{1}{2}$  (post card) pictures.

Made of first quality material, by high class workmen, these cameras receive the same rigid tests for reliability as are applied to all Eastman products. It is only through a long perfected factory organization and production in large quantities, that cameras





# Folding Cartridge Premos

## Nos. 2C and 3A

of such exceptional quality may be offered at such moderate prices.

The box is made of aluminum, which means strength and light weight, the standard is so formed as to be unusually rigid and metal parts are finished in nickel and black enamel. The covering is of a substantial grade of imitation leather; the finder is reversible; two tripod sockets are provided, and an automatic focusing lock permitting the lens to be instantly and positively set for any distance.

The cameras load with standard Eastman N. C. film. This is not only an assurance of the quality of the results to be obtained, but means that every process—loading, unloading, developing—can be performed in daylight, eliminating the dark-room entirely.

The shape of the negatives made by these cameras is very appropriate for portraiture. The Kodak Portrait Attachment adapts either of these cameras to home portraiture.

### Specifications

No. 2C: Size of pictures,  $2\frac{7}{8} \times 4\frac{7}{8}$  in. Capacity: 10 exposures without reloading. Size of camera:  $1\frac{3}{4} \times 3\frac{3}{8} \times 8\frac{5}{8}$  in. Weight: 28 ozs. Lens: Meniscus Achromatic, 5-inch focus. Shutter: Kodak Ball Bearing (See page 28). Reversible finder, two tripod sockets, automatic focusing lock, black leather bellows.

No. 3A: Size of pictures,  $3\frac{1}{4} \times 5\frac{1}{2}$  in. Capacity: 10 exposures without reloading. Size of camera:  $1\frac{3}{4} \times 4\frac{5}{8} \times 9\frac{5}{8}$  in. Weight: 28 ozs. Lens: Meniscus Achromatic,  $5\frac{3}{8}$ -inch focus. Shutter: Kodak Ball Bearing (See page 28). Reversible finder, two tripod sockets, automatic focusing lock, black leather bellows.

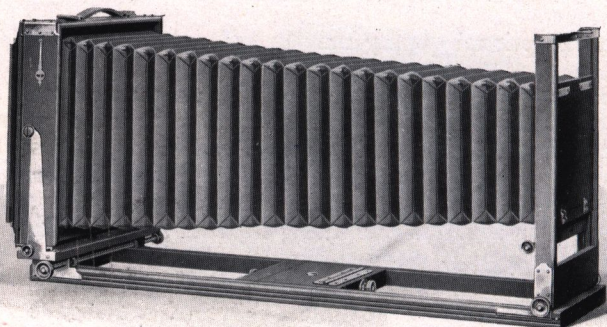
### Prices

	No. 2C	No. 3A
Folding Cartridge Premo as per specifications	\$11.13	\$12.19
Ditto, with R. R. Lens	13.25	14.84
Cartridge Premo Carrying Case	1.55	1.65
N. C. Film Cartridge, 10 exposures (No. 130 for No. 2C, No. 122 for 3A)	.62	.72
Ditto, 6 exposures	.36	.41
Kodak Portrait Attachment (See page 29)	.50	.50

*The Prices of Camera and Film Include the Excise War Tax*



# Eastman View No. 1



**B**UILT for practical service, the Eastman View Camera No. 1 will meet the requirements of anyone desiring a substantial, reliable View Camera at medium cost.

The camera is made of the best quality cherry with mahogany finish. Metal parts are of polished brass, and corners are dove-tailed and reinforced by metal angle pieces.

It has double extensions, and both front and back are actuated by rack and pinion, so that the camera may be focused from either end, and the back can be racked up as close to the front as desired. This provides for the use of lenses of the widest angle. The camera has rising and falling front, actuated by rack and pinion, and this can be locked solidly at any point by merely pushing in the pinion. The front board is removable and is large enough to accommodate any lens.

Both horizontal and vertical swings are provided, and the back is reversible and furnished with a vertical cut-off board, so that two negatives may be made on one plate, if desired.

A strap handle and plumb level are supplied and an automatic bellows support which prevents sagging of the bellows at all times.

The price includes one double plate holder and canvas carrying case. This case is of the combination style, with three compartments in the bottom; one for the camera, one for plate



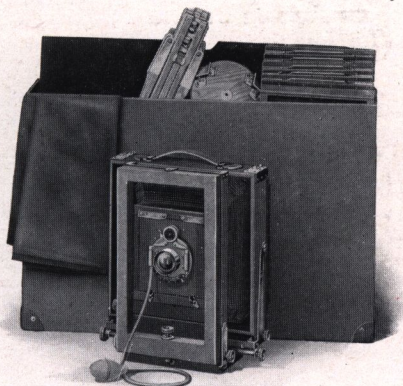
# Eastman View No. 1

holders and the other for focusing cloth, lenses and other accessories. On top of these is an extra compartment for carrying the tripod.

The case is strongly made, with corners reinforced, and full length straps of the best leather.

The price includes case and one holder, either film or plate. Unless specified we will furnish plate holder.

For those who want larger size view cameras we will furnish the regular Empire State model in the 11 x 14 size.



## Specifications

Bellows: draw, 5 x 7, 22½ in.; 6½ x 8½, 26 in.; 8 x 10, 29 in. Weight: 5 x 7, 6 lbs.; 6½ x 8½, 8 lbs.; 8 x 10, 9½ lbs. Size of Lens Board: 5 x 7, 4¼ x 4¼ in.; 6½ x 8½, 4¾ x 4¾ in.; 8 x 10, 4¾ x 4¾ in. Carrying Case: long style canvas, combination style, with compartment for camera, holders and tripod.

## Prices

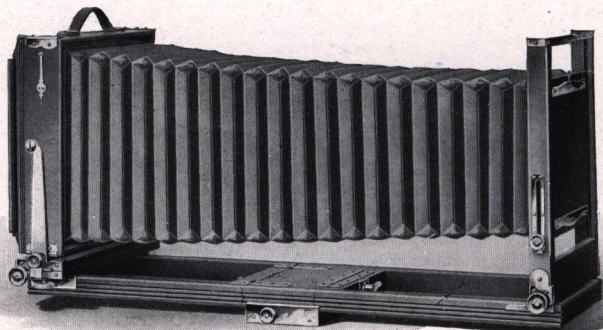
	5 x 7	6½ x 8½	8 x 10
Eastman View No. 1 with Case and Holder	\$31.53	\$33.64	\$36.80
Eastman View No. 1 Complete Outfit*	59.31	75.17	89.92
Complete Outfit as above, with Rapid Rectigraphic instead of Symmetrical Lens	74.15	87.89	101.58
Extra Carrying Case	4.50	4.75	5.00
Extra Lens Board	.30	.40	.50
Eastman View Plate Holders	1.75	1.85	2.00
Eastman Portrait Film Holders	1.75	1.85	2.00
Empire State Camera, furnished only in the 11 x 14 size			63.30

\*Eastman View No. 1 Complete Outfit includes: Eastman View Camera No. 1, Symmetrical Lens, Automatic Shutter, six Plate Holders, Combination Tripod, Focusing Cloth and Case to hold complete outfit.

*The Prices of Camera Include the Excise War Tax*



# Eastman View No.2



**A**LL our experience in view camera making, all the information that we have been able to collect of the needs of the view camera worker, have been embodied in this model, making the camera as near perfection as can be devised.

It is constructed with the idea of providing the greatest possible solidity and strength throughout. The extensions are extra thick, the standard is very large and will furnish an absolutely rigid support for the heaviest lenses. Corners are dovetailed and reinforced by brass angle pieces, and the metal parts are all made of the best quality of brass, fully lacquered.

The front board is very large and removable. The rising and falling front is actuated by rack and pinion. The camera has both vertical and horizontal swing, and can be focused from either front or rear by rack and pinion, so that the back can be racked up as close to the front as desired. Thus lenses of the widest angle can be used. A sliding tripod block is provided so that the camera can always be supported directly above the tripod or the weight distributed, as the operator may wish.

The back is reversible, a plumb level and strap handle are supplied and both horizontal and vertical cut-off boards are furnished so that four different negatives can be made on one plate if desired. The bellows of this camera is made of genuine leather, and a spring arrangement, working automatically, prevents it from sagging at any time.



# Eastman View No. 2

The method of locking extensions is very convenient, not by means of the old-fashioned, long threaded screw, but by a specially constructed device which locks firmly by merely being pushed in and given a quarter turn. The back extension, which is detachable, in addition to this device is further strengthened by two clamp catches which hold it absolutely rigid.

Especial attention is called to the 7 x 11 size—a proportion which will prove very attractive to many workers. This camera has an especially wide front board with sliding arrangement which permits the centering of the lens on either half of the 7 x 11 plate when it is desired to make two exposures on one plate. The swing of this model is of unusual latitude to obtain its fullest value, for architectural work.

Anticipating that most photographers will prefer to use Eastman Portrait Film with this size camera, we will supply the Eastman Portrait Film Holder with it unless otherwise specified.

The camera is made of mahogany and hand polished, with the exception of the extensions, which are of cherry on account of its greater strength.

## Specifications

Bellows: draw, 5 x 7, 23 in.;  $6\frac{1}{2} \times 8\frac{1}{2}$ , 26 $\frac{1}{2}$  in.; 8 x 10, 29 $\frac{1}{2}$  in.; 7 x 11, 31 in. Weight: 5 x 7, 7 lbs.;  $6\frac{1}{2} \times 8\frac{1}{2}$ , 10 $\frac{1}{2}$  lbs.; 8 x 10, 11 $\frac{1}{4}$  lbs.; 7 x 11, 15 $\frac{1}{2}$  lbs. Size of Lens Board: 5 x 7, 4 $\frac{1}{4} \times 4\frac{1}{2}$  in.;  $6\frac{1}{2} \times 8\frac{1}{2}$ , 6 x 6 in.; 8 x 10, 6 x 6 in.; 7 x 11, 6 $\frac{1}{8} \times 3\frac{7}{8}$  in. Carrying Case, canvas, combination style, with compartments for camera, holders and tripod. All operating nuts on the right side, binding nuts on the left hand side.

## Prices

	5x7	$6\frac{1}{2} \times 8\frac{1}{2}$	8x10	7x11
Eastman View No. 2 with Case and Holder	\$42.10	\$45.25	\$47.34	\$52.58
Eastman View No. 2 Complete Outfit*	69.88	86.78	100.46	105.71
Complete Outfit as above, but with Rapid Rectigraphic instead of Symmetrical Lens	84.72	97.38	112.12	117.37
Extra Carrying Case	5.00	5.50	6.00	7.00
Extra Lens Board	.60	.75	.75	1.25

\*Eastman View No. 2 Complete Outfit includes: Eastman View Camera No. 2, Symmetrical Lens, Automatic Shutter, six Film or Plate Holders, Combination Tripod, Focusing Cloth, and Case to hold complete outfit. See illustration similar outfit, page 25.

*The Prices of Camera Include the Excise War Tax*



# Kodak Ball Bearing Shutter

THIS shutter is automatic in its action, and does not require setting. It leaves work on ball bearings, giving its smooth and reliable action, and as they open and close in a star shaped aperture, the maximum of light is admitted. It is operated by cable release or finger release, and has Iris Diaphragm. The illustration shows the shutter as fitted to cameras equipped with Kodak Anastigmat lens, *f.* 7.7, but all models work upon the same general system. The model regularly fitted to Premoette Jr., Pocket Premo, and Folding Cartridge Premo No. 2 has time and bulb actions and indicated speeds of 1/25 and 1/50 second. It has no cable release.

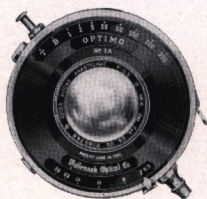


The models supplied with Folding Cartridge Premos Nos. 2A, 2C, 3A, Premoette Senior, Premo Nos. 8, 9 and 10 have the same speeds as the No. 0 and in addition the higher speed of 1/100 second. These are supplied with cable releases in all cases excepting as fitted to 2A Folding Cartridge Premo, where it has finger release only.

# Optimo Shutter

This shutter is recommended only where anastigmat lenses are to be used, as it is constructed to attain the highest possible speed for a between-the-lens shutter. It is a shutter of the setting type, leaves opening in star shape, and besides time and bulb exposure actions, has variable indicated speeds of 1, 1/2, 1/5, 1/25, 1/50, 1/100, 1/200, and 1/300 seconds. A turn of the outer milled disc, on which is engraved an arrow indicator, makes adjustment for any desired exposure. The Iris Diaphragm is regulated by a separate indicator. The shutter operates with cable or finger release.

The Optimo shutter is supplied with special lens equipment on the Premo No. 12 and the Premos Nos. 9 and 10.





# Kodak Portrait Attachment

This is simply an extra lens which fits on in front of the regular lens and in no way affects the operation of the camera, excepting to so change the focus as to permit working close to the subject, thereby giving good sized head and shoulder portraits. Order by number.



No. 0.	For Premo Jrs. 1 and 1A and Cartridge Premos Nos. 2 and 2A	\$0.50
No. 3.	For Premoette Jr. No. 1, f. 7.7; 2½ x 4¼ and 3¼ x 4¼ Premoette Sr., R. R. lens; Premo Jr. No. 3, No. 2A Folding Cartridge Premo with single or R. R. lens	\$0.50
No. 4.	For No. 2C Cartridge Premo (Box Style)	.50
No. 5.	For all 4 x 5, 3A and 5 x 7 Premos Nos. 8, 9 and 10; 3A Premoette Sr., R. R. lens; Nos. 2C and 3A Folding Cartridge Premos, both single and double lenses	.50
No. 6.	For Premo No. 12 with Kodak Anastigmat lens, f. 6.3, and all B. & L. Anastigmats	.50
No. 7.	For 3¼ x 5¼ Premoette Sr., f. 7.7, and 3A and 4 x 5 Premos No. 9 when fitted with f. 7.7 lens	.50
No. 8.	For Premoette Jr. No. 1, both single and double lens, No. 2 Folding Cartridge Premo with single or R. R. lens and Premo No. 12, with R. R. lens and Pocket Premo	.50
No. 13.	For 2½ x 4¼ and 3¼ x 4¼ Premoette Sr., f. 7.7 Lens; Premo No. 12, f. 7.7 lens	.50

# Kodak Sky and Color Filters

The Kodak Sky Filter is designed to equalize the great difference in light between sky and foreground in landscape photography. Therefore only the upper half of the sky filter is stained yellow, the lower half being colorless. The Kodak Color Filter is stained throughout and is for use for all subjects, such as flowers, embracing colors which act weakly on the sensitive films. Specify which is wanted.

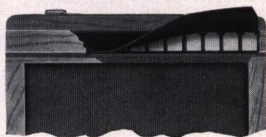
No. 0.	For Premo Jrs. Nos. 1 and 1A and Cartridge Premos Nos. 2 and 2A	\$0.50
No. 3.	For Premoette Jr. No. 1, f. 7.7; 2½ x 4¼ and 3¼ x 4¼ Premoette Sr., R. R. lens; Premo Jr. No. 3, No. 2A Folding Cartridge Premo with Single or R. R. lens	.75
No. 4.	For No. 2C Cartridge Premo (Box Style)	.75
No. 5.	For all 4 x 5, 3A and 5 x 7 Premos Nos. 8, 9 and 10; 3A Premoette Sr., R. R. lens; Nos. 2C and 3A Folding Cartridge Premos, both single and double lenses	1.00
No. 6.	For Premo No. 12 with Kodak Anastigmat lens, f. 6.3, and all B. & L. Anastigmats	.75
No. 7.	For 3¼ x 5¼ Premoette Sr., f. 7.7, and 3A and 4 x 5 Premos No. 9 when fitted with f. 7.7 lens	1.00
No. 8.	For Premoette Jr. No. 1, both single and double lens, No. 2 Folding Cartridge Premo with single or R. R. lens, Premo No. 12 with R. R. lens, and Pocket Premo	.50
No. 13.	For 2½ x 4¼ and 3¼ x 4¼ Premoette Sr., f. 7.7 lens; Premo No. 12, f. 7.7 lens	.75



# Plate Holders

## Premo Plate Holder

Premo holders are made absolutely light tight by a fully patented light-lock. This device is shown in cut and is constructed of finely tempered, non-corrosive metal with independently operating spring fingers overlaid with a closely woven, specially prepared fabric. A slide can be inserted cornerwise without admitting light to the plate. Fitted with lacquered press-board slides that will



not electrify, collect dust, crack or split.

2¼ x 3¼ (single)	\$ .60	3¼ x 5½	.	\$1.25	5 x 7	.	\$1.75
3¼ x 4¼	1.25	4 x 5	.	1.25	6½ x 8½	.	2.00

## Eastman View Holder

These holders are made with bottom flap, avoiding all danger of plates falling out. They are strongly constructed, have patented spring finger light-lock, and made to fit both models of the Eastman View Camera. Slides are of lacquered press-board.

5 x 7	.	\$1.75	8 x 10	.	\$2.00	7 x 11	.	\$2.00
6½ x 8½	.	1.85						

## Universal Plate Holder

Made in the same style as the Eastman View Holder but to fit Empire State and Premo View Cameras.

5 x 7	.	\$1.75	8 x 10	.	\$2.00	14 x 17	.	\$6.00
6½ x 8½	.	1.85	11 x 14	.	5.00			

## Eastman Portrait Film Holder

Provided to fit Eastman View, Universal and Premo View Cameras. Give name of camera when ordering.

5 x 7	.	\$1.75	8 x 10	.	\$2.00	11 x 14	.	\$5.00
6½ x 8½	.	1.85	7 x 11	.	2.00			

## R. O. C. Plate Holder

This holder is of good construction, it has the patented light trap feature of the Premo holders, and is adapted for use in the R. O. C. View Camera.

5 x 7	.	\$1.50	6½ x 8½	.	\$1.60	8 x 10	.	\$1.75
-------	---	--------	---------	---	--------	--------	---	--------

## Premo Film Pack Adapter

Size		Price	Size		Price
2¼ x 3¼	.	\$1.50	3A (3¼ x 5½)	.	\$2.00
3¼ x 4¼	.	1.50	4 x 5	.	2.00
3 x 5¼	.	2.00	5 x 7	.	3.00



# Film, Plates and Paper

## Premo Film Packs



Premo Film Packs contain 12 exposures of Eastman N. C. Speed Film, which is non-curling, non-halation, and orthochromatic to a considerable degree. The gradation and fineness of grain is of the highest quality.

Size	Per Pack
1 3/4 x 2 3/8, No. 300	\$ .26
2 1/4 x 3 1/4, No. 320	.41
2 1/2 x 4 1/4, No. 316	.52
3 1/4 x 4 1/4, No. 318	.72
3 x 5 1/4, No. 342	.78
3 1/4 x 5 1/2, No. 322	.33
4 x 5, No. 323	.93
5 x 7, No. 315	1.65

The Prices of Premo Film Packs Include the Excise War Tax

## Glass Dry Plates

### Single Coated

Seed, Standard or Stanley.

Size	Price per Dozen	Size	Price per Dozen	Size	Price per Dozen
2 1/4 x 3 1/4	\$ .35	4 x 5	\$ .65	5 x 8	\$ 1.25
3 1/4 x 4 1/4	.45	4 1/4 x 6 1/2	.90	6 1/2 x 8 1/2	1.65
3 1/4 x 5 1/2	.65	5 x 7	1.10	8 x 10	2.40

## Eastman Portrait Film

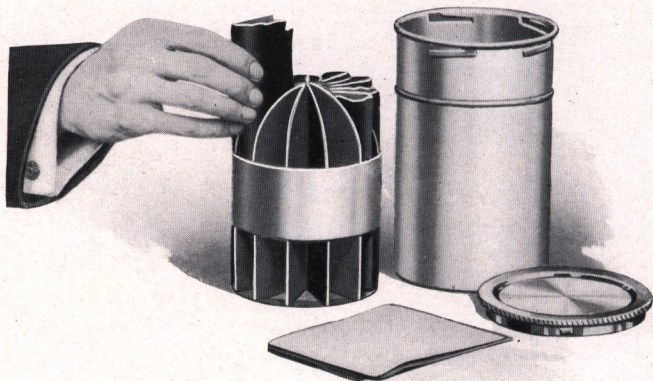
Size	Price per Dozen	Size	Price per Dozen	Size	Price per Dozen
5 x 7	\$ 1.10	8 x 10	\$ 2.40	11 x 14	\$ 6.00
6 1/2 x 8 1/2	1.65	7 x 11	2.40		

## Velox Paper and Sundries

Size		Single Weight			Double Weight		
		Doz.	1/2 Gross	Gross	Doz.	1/2 Gross	Gross
1 1/8 x 2 3/8 (For negatives)	No. 00	\$ .10	\$ .60	\$ 1.00	\$ .15	\$ .75	\$ 1.25
2 1/4 x 3 1/4		.10	.60	1.00	.15	.75	1.25
2 1/2 x 4 1/4		.12	.70	1.25	.18	.90	1.55
3 1/4 x 4 1/4		.15	.80	1.50	.20	1.00	1.90
2 7/8 x 4 7/8		.15	.80	1.50	.20	1.00	1.90
3 1/4 x 5 1/2		.15	.80	1.50	.20	1.00	1.90
4 x 5		.20	1.10	2.00	.25	1.40	2.50
5 x 7		.35	2.00	3.50	.45	2.50	4.40
Velox Post Cards					.20	1.10	2.00
Velox Liquid Developer, N. A. (Non-Abrasion), 4-ounce bottle (makes 20 ozs. for Special, 12 ozs. for Regular)							.28
Ditto, 16-ounce bottle							.84
Nepera Solution, per 4-ounce bottle							.28
Ditto, per 16-ounce bottle							.84
Velox Re-developer for Sepia Tones, per 4-ounce bottle							.50
Ditto, 2 ounces (sufficient for 150 4 x 5 prints)							.30
Kodak N. A. M. Q. Developer, per package 3 tubes							.35



# Premo Film Pack Tank



**C**ORRECT development of negatives is essential to the best photographic result. The amateur who wishes to do his own work will find the difficulties and uncertainties of development entirely removed, as the tank method of development is automatic and scientifically exact.

Technical skill is not required with the Premo Film Pack Tank—it is only necessary to follow the simple instructions provided.

The Premo Film Pack Tank consists of two pieces—a metal receiver or cage for the films, and a tank with cover for the developing fluid. The entire outfit is self-contained and can be easily carried in a corner of a suitcase.

The cage is divided into twelve compartments—in the 5 x 7 size, six—each accommodating one film. As the film is taken from the pack, it is held between the thumb and fingers, slightly bent from top to bottom, and slipped into its respective compartment. When all the compartments are filled, the cage is placed in the tank, which has been previously filled with developer, the top replaced and the films left to develop for a certain specified time. No further attention is necessary except to turn the tank end for end several times during the progress of development.



# Premo Film Pack Tank

At the expiration of the full time, open the tank, take out the cage, remove films, place them in a tray of water for a moment, then transfer to the fixing bath. Development is completed. Rinse out cage and tank and set them aside.

The operation of removing films from the pack and loading the cage is done, of course, in a darkened room by the light of a ruby lamp. During the day any darkened closet will suffice; at night any dark room in which the shades are drawn will answer. To load the films in cage will take only two or three minutes, and as soon as the top is placed on tank it may be brought out into any light and left until development is completed. Night is really an ideal time to develop films as they can be fixed and washed in a short time and will dry over night, being all ready to print from in the morning.

If it is desired to develop less than a dozen films, one merely removes from his pack as many films as have been exposed, places them in the cage, and proceeds in the same manner as described above.

The cage of the No. 1 Tank is slightly different from that shown in the illustration, but the method of loading is the same and, of course, the results are just as dependable in every respect.

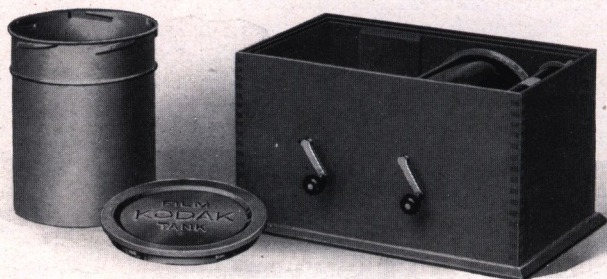
Particular attention is called to the necessity of using Premo Tank developing powders for normal development in Premo Film Pack Tanks. If Kodak Tank powders are used a longer time for development must be given. Follow closely the instructions which come with every film pack.

## Prices

Premo Film Pack Tank No. 1, for 12 $1\frac{3}{4} \times 2\frac{3}{8}$ or $2\frac{1}{4} \times 3\frac{1}{4}$ films	\$1.75
Ditto, No. 2, for 12 $2\frac{1}{2} \times 4\frac{1}{4}$ , $3\frac{1}{4} \times 4\frac{1}{4}$ , $3 \times 5\frac{1}{4}$ , $3\frac{1}{4} \times 5\frac{1}{2}$ or $4 \times 5$ films	4.00
Ditto, No. 3, for 6 $5 \times 7$ films	4.50
Premo Tank Developing Powders, in packages of 6, No. 1	.20
Premo Tank Developing Powders, in packages of 6, No. 2	.25
Premo Tank Developing Powders, in packages of 6, No. 3	.35
Kodak Acid Fixing Powder, per 1 pound package	.25
Ditto, per $\frac{1}{2}$ pound package	.15
Ditto, per $\frac{1}{4}$ pound package	.10



# Kodak Film Tank



**T**HE Kodak Film Tank not only develops roll film automatically but it does it in broad daylight, eliminating the necessity for a dark room during any part of the photographic process.

This tank consists of a winding box, a light-proof apron, and a heavily nickeled brass solution cup with cover. In the Brownie Film Tank, however, no cover is necessary as the film roll itself is turned.

The film to be developed is placed upon a reel in the winding box, the cover is placed on the box and the film is wound into the apron, which protects it from light, permitting safe removal from the box. It is then lowered into the cup of developer, the cover attached and the film left to be developed for twenty minutes. After development the film is removed for fixing.

## Prices

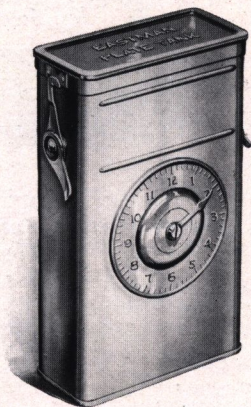
Brownie Kodak Film Tank, for use with No. 2 and No. 2 Folding Cartridge Premo cartridges, complete . . .	\$3.00
Cover for same . . .	.25
2½-inch Kodak Film Tank, for use with all cartridges having a film width of 2½ inches or less, complete . . .	4.00
3½-inch Kodak Film Tank, for use with all Kodak and Brownie cartridges having a film width of 3½ inches or less, complete . . .	5.50
Flexible Rubber Tray, for 3½-inch Kodak Film Tank . . .	2.00
Kodak Tank Developer Powders for Brownie Kodak Film Tank, per package ½ dozen . . .	.15
Ditto, for 2½-inch tank, per package, ½ dozen . . .	.20
Ditto, for 3½-inch tank, per package, ½ dozen . . .	.20



# Eastman Plate Tank

IN the Eastman Plate Tank, plates may be developed in the same manner and with the same assurance of excellent results obtained with films developed in the Premo Film Pack Tank. The theory of construction is precisely the same, with of course such differences as are necessary because of the physical differences between films and plates.

It consists of a metal solution cup, a cage for holding twelve (or less) plates and a simple device for loading plates into the cage. In the  $3\frac{1}{4} \times 4\frac{1}{4}$ ,  $3\frac{1}{4} \times 5\frac{1}{2}$  and  $4 \times 5$  sizes, the cage of plates may be developed in a Premo Film Pack Tank, so that one using a Premo that takes films or plates and having a Premo Film Pack Tank needs only to purchase the cage of the plate tank for the development of his plates.



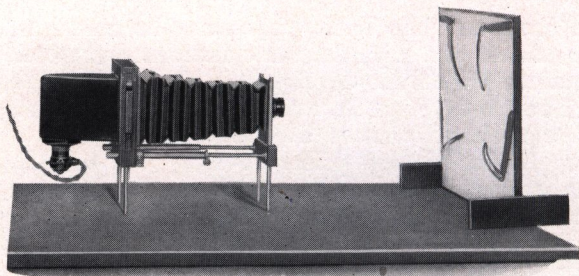
It is thus apparent that the owner of a Premo plate camera can use films or plates in his camera with equal facility, and also can avail himself of the advantages of tank development with either medium.

## Prices

Eastman Plate Tank for $4 \times 5$ , $3\frac{1}{4} \times 5\frac{1}{2}$ or smaller plates, including Solution Cup, Plate Cage, Loading Fixture and Adjustable Kit . . . . .	\$ 4.00
Ditto, $5 \times 7$ , without Kit . . . . .	6.00
Ditto, $8 \times 10$ , with Adjustable Kit . . . . .	12.00
Adjustable Kit for $4 \times 5$ or $3\frac{1}{4} \times 5\frac{1}{4}$ Tank, to take smaller plates . . . . .	.60
Kits for $5 \times 7$ Tank, to take $3\frac{1}{4} \times 5\frac{1}{2}$ , $4\frac{1}{4} \times 6\frac{1}{2}$ or $4\frac{3}{4} \times 6\frac{1}{2}$ plates, each . . . . .	1.00
Extra Adjustable Kit for $8 \times 10$ Plate Tank . . . . .	1.25
Plate Cage and Loading Fixture for $4 \times 5$ and $3\frac{1}{4} \times 5\frac{1}{2}$ plates (can be used in a $4 \times 5$ Premo Film Pack Tank) . . . . .	1.50
Eastman Plate Tank Powders, for $4 \times 5$ Tank, per package, $\frac{1}{2}$ dozen . . . . .	.20
Ditto, for $5 \times 7$ Tank, per package, $\frac{1}{2}$ dozen . . . . .	.40
Ditto, for $8 \times 10$ Tank, per package, $\frac{1}{2}$ dozen . . . . .	.90
Kodak Acid Fixing Powder, per 1-pound package . . . . .	.25
Ditto, per $\frac{1}{2}$ -pound package . . . . .	.15
Ditto, per $\frac{1}{4}$ -pound package . . . . .	.10



# The Kodak Enlarging Outfit



**T**HE Kodak Enlarging Outfit is a thoroughly practical apparatus for the amateur who wishes to make his own enlargements. The Negative Carrier will accommodate film or plate negatives of any size up to 4 x 6, and enlargements within the size of the easel (14 x 17), may easily be made.

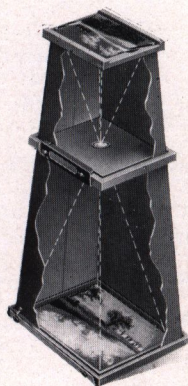
The Outfit includes Enlarging Camera, Lens and Diaphragm (largest stop U. S. 4), Lamp House, Cord, Plug and Socket, but does not include the 60 Watt Mazda Electric Light Bulb.

Kodak Enlarging Outfit	\$16.00
Lantern Slide Block	.75

## Brownie Enlarging Camera

**T**HE Improved Brownie Enlarging Camera consists of a light-tight cone with attachments to hold a negative at the small end, and a sheet of Bromide or Velox paper at the other. The cameras, with the exception of the No. 2 Brownie Post-card, are collapsible, so that they fold flat and may be conveniently carried in a suitcase.

No. 2 Brownie Post Card Enlarging Camera for post card ( $3\frac{1}{4} \times 5\frac{1}{2}$ ) enlargements from $2\frac{1}{4} \times 3\frac{1}{4}$ negatives	\$2.67
No. 2 Brownie Enlarging Camera, for 5 x 7 enlargements from $2\frac{1}{4} \times 3\frac{1}{4}$ negatives	3.20
No. 3 Ditto, for $6\frac{1}{2} \times 8\frac{1}{2}$ enlargements from $3\frac{1}{4} \times 4\frac{1}{4}$ negatives	4.27
No. 4 Ditto, for 8 x 10 enlargements from 4 x 5 negatives or $6\frac{1}{8} \times 9\frac{3}{4}$ enlargements from $3\frac{1}{4} \times 5\frac{1}{2}$ negatives	4.80



*The Prices on This Page Include the Excise War Tax*



## Kodak Amateur Printer

**A** CONVENIENT and practical printer for making prints upon developing out paper. Prints may be made with white margins in any size from  $1\frac{5}{8} \times 2\frac{1}{2}$  to  $4 \times 5\frac{1}{2}$  inches, by means of the adjustable masking device, which also holds the negative firmly until released.

Within the box, a small red electric lamp enables the operator to properly place the negative and paper. When ready for exposure, the hinged pressure board is closed and locked, and a 60 Watt Mazda Lamp for which provision is made, is automatically lighted. The window on the side provides a safe dark-room light for developing out and bromide papers.

It is supplied complete, with-out lamp, but including  $5\frac{1}{2}$  feet of electric light cord and socket.

The Kodak Amateur Printer . . . . .

\$7.50

## Velox Transparent Water Color Stamps

**A** NYONE can make beautifully colored prints by the use of Velox Transparent Water Color Stamps.

No special artistic skill, no knowledge of painting whatever is necessary. Just a brush or two and the book of stamps, which includes simple directions for coloring both prints and lantern slides.

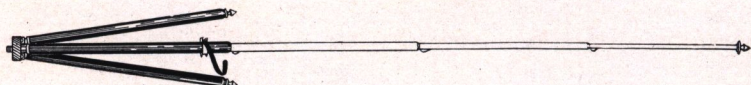
Each book includes twelve sheets of colors and each sheet is divided by perforations into twenty-two stamps. To use any color merely tear off a stamp, place in a small saucer or palette supplied with the outfit, and cover with about a teaspoonful of water.

Velox Transparent Water Color Stamps, complete booklet, 12 colors . . . . .	\$0.25
Separate Color Leaves, two sheets . . . . .	.05
Set of 3 Special Brushes, per set . . . . .	.50
Mixing Palette . . . . .	.25
Velox Transparent Water Color Stamp Outfit, including book, three brushes and palette . . . . .	.75



# Tripods

## Kodak Metal Tripod



Combining light weight and compactness with exceptional rigidity, this is an ideal tripod for cameras up to 5 x 7.

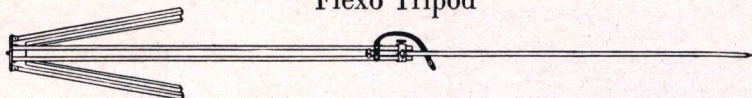
Has telescoping legs of brass tubing—lower sections nicked, the upper black enameled—should a part become inoperative through wear or accident, any section may be removed for repairs. This is a unique feature among metal tripods.

When extended each section catches and holds firmly. To close, it is necessary to press in top catch only, the others then releasing automatically.

The Nos. 1 and 2 have revolving heads for attaching to camera. With this construction the camera may be swung, so as to take in the desired view without moving the tripod, a distinct advantage over other types of metal tripods. The Nos. 1 and 2 also have straps for holding the legs in place when closed. The No. 6 has folding head and folds into such a compact flat package that it can easily and conveniently be carried in the pocket.

	Section	Closed	Length Extended	Weight	Price
Kodak Metal Tripod No. 0	3	15½ in.	39½ in.	15 ozs.	\$2.75
Kodak Metal Tripod No. 1	4	15 in.	48½ in.	24½ ozs.	4.00
Kodak Metal Tripod No. 1C	4	15¼ in.	48¾ in.	25½ ozs.	3.75
Kodak Metal Tripod No. 2	5	13½ in.	49½ in.	25 ozs.	4.50
Kodak Metal Tripod No. 2C	5	13¾ in.	49¾ in.	26 ozs.	4.25
Kodak Metal Tripod No. 6	6	11¾ in.	40 in.	24 ozs.	6.50
Leatherette Case for No. 0 or No. 1					1.00
Leather Carrying Case for No. 0, 1, or 2					2.50
Leather Carrying Case for No. 6					3.00
Rubber tips for use indoors, for any size, per set of three					.10

## Flexo Tripod



For cameras up to and including the 5 x 7 size this is a very satisfactory tripod at small expense. Only clear, straight grained spruce is used in its construction.

Price, \$1.25

## Bull's Eye Tripod



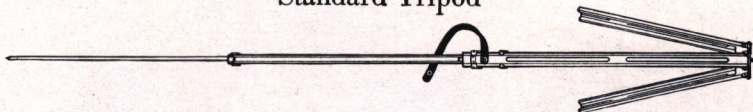
Two sections. Aluminum revolving head. Made of maple with brass fittings. For 4 x 5 cameras, or smaller. Length, extended, 42½ inches; folded, 24 inches. The only two-section tripod that will go into a suitcase.

Price, \$2.00



# Tripods

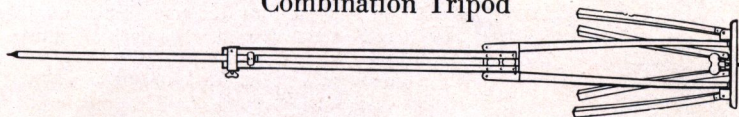
## Standard Tripod



The feature of this tripod is the automatic locking of the sections when they are extended. Light, compact and rigid. Fixed, non-detachable head. Length, folded, 21 inches; extended, 53½ inches. Weight, 18 ounces. Cherry finish, brass trimmings.

Price, \$3.00

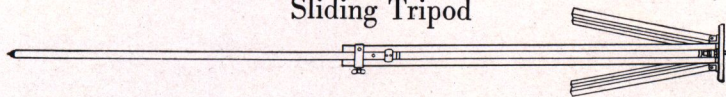
## Combination Tripod



This tripod is made on the sliding and folding principle. The wood parts are of ash and the finish is of the very best.

Style	Size of Camera	Weight	Price
No. 2½	6½ x 8½ and smaller	3 lbs.	\$5.00
No. 3	8 x 10 and 10 x 12	4 lbs.	5.50
No. 4	11 x 14 and 14 x 17	5 lbs.	6.50
No. 5	17 x 20 and 20 x 24	8 lbs.	9.00

## Sliding Tripod



A perfectly rigid tripod for the heaviest cameras. The No. 1 and No. 2 are made of spruce, the No. 3 and No. 4 of ash.

Style	Size of Camera	Weight	Price
No. 1	5 x 7 and smaller	2 lbs.	\$2.50
No. 2	5 x 8 and 6½ x 8½	2 lbs. 8 ozs.	3.00
No. 3	8 x 10 and 10 x 12	4 lbs. 8 ozs.	3.50
No. 4	11 x 14 and 14 x 17	6 lbs. 8 ozs.	5.00

## Eastman Tripod Brace

An exceedingly simple device for holding the tripod legs in position when extended. Cannot collapse.

Eastman Tripod Brace . . . . . Price, \$1.50

## R. O. C. Tripod Truck

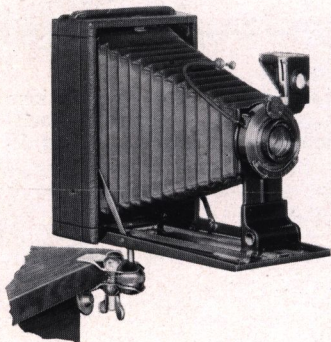
An excellent device for those who use a tripod indoors. Perfectly solid when extended, supplied with casters and folds compactly when not in use.

R. O. C. Tripod Truck	{ No. 1 for average tripods . . .	\$1.50
	{ No. 2 for very heavy tripods . . .	1.75



# Premo Accessories

## The Optipod



It is frequently necessary to provide a firm support for a camera when a tripod is not conveniently at hand. The felt covered jaws of the Optipod may be quickly and firmly attached to a chair, table, fence, cycle or motor car, with a few turns of the thumb screw, at the same time rigidly clamping the ball and socket camera support in the required position. If slight readjustment of the camera is necessary, the thumb screw is turned just enough to permit movement of the ball in the socket.

The Optipod can also be attached to the head of a tripod, permitting adjustment of the camera that would be difficult, if not impossible, without this device.

The Optipod is quite small and may readily be carried in the pocket. It is finished in nickel.

The Optipod . . . . . \$1.00



## The Kodapod

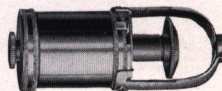
This little device serves the purpose of a tripod, and may readily be carried in the pocket. Its jaws are actuated by a strong spring, and when attached to a tree, fence or similar object, it provides a firm support for a camera. The adjustable head permits using the camera in the most desirable position.

The Kodapod . . . . . \$1.50

## Kodak Self Timer

The Kodak Self Timer may be adjusted to automatically release the shutter at the required time, permitting the operator of the camera to be included in the picture.

The Timer is made in one size, and will only operate shutters fitted with Cable Release.



Kodak Self Timer . . . . . \$1.25

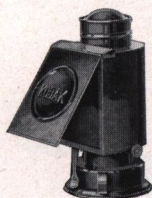


# Premo Accessories

## Kodak Candle Lamp

This lamp is collapsible, well made, of special tested ruby fabric, bound in metal frames.

Kodak Candle Lamp . . . \$ .25  
Extra Candles for same, per doz. .40



## Kodak Dark Room Lamp

The Kodak Dark Room Lamp is oil burning and is fitted with both orange and ruby glass.

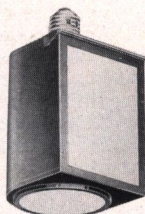
No. 2 Kodak Dark Room Lamp \$1.00

## Brownie Safelight Lamp

An inexpensive but reliable safelight lamp for the amateur. The complete lamp screws into any electric socket. It takes a 15-watt Mazda bulb and has removable circular safelight in the bottom and square one on the side.

A very convenient, clean lamp for the average amateur and easily carried in the bag of the traveler or vacationist for use as required.

Brownie Safelight Lamp \$1.50  
Extra Safelights No. 1B Circular, \$ .20; Side .30

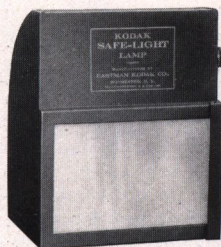


## Kodak Safelight Lamp

Those who have electricity in the house will find this lamp much superior to other types for dark room work. It is supplied with a 5 x 7 Series I Safelight for use with films or plates not color sensitive. For more advanced work Safelights of other Series may be readily substituted.

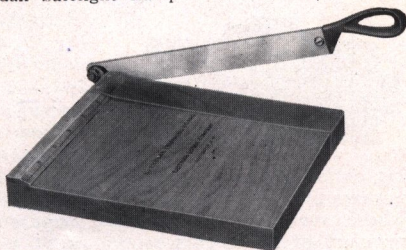
Price includes safelight and four feet of electric cord with socket.

Kodak Safelight Lamp . . . \$3.50



## Kodak Trimming Board

A thoroughly reliable trimming board at a moderate price, constructed of hard wood with natural finish. The blade is of the best steel and a rule is fitted to the board.

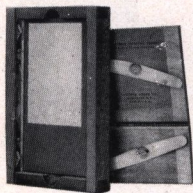


No. 1, 5 x 5 inches . . . . .	\$ .50
No. 2, 7 x 7 inches . . . . .	.70
Transparent Trimming Gauge for No. 1 (extra) . . . . .	.35
Do., No. 2 . . . . .	.35



# Premo Accessories

## Maskit Printing Frame

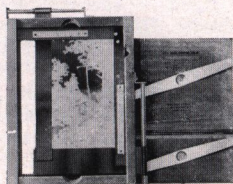


This frame is furnished with a series of paper masks and a patented simple-working device on the inside of the frame holds mask, paper and negative firmly together, assuring uniform white margins and preventing all chance of slipping.

Kodak Maskit Printing Frame, 3¼ x 4¼, opens two-thirds . . . . .	\$ .45
Ditto, 3¼ x 5½, opens two-thirds . . . . .	.50
Ditto, 5 x 7, opens two-thirds . . . . .	.60

## Auto-Mask Printing Frame

An adaptation to a printing frame of the masking principle of the highly successful Kodak Amateur Printer. Will accommodate negatives of any size up to and including 4 x 5 and 3¼ x 5½. It is a very simple matter to adjust the mask for uniform masking of any negative you care to use, a graduated scale attached to the stationary guide aiding in sizing and holding exact dimensions of the mask openings.




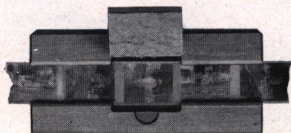
Kodak Auto-Mask Printing Frame . . .	\$1.25
--------------------------------------	--------

## Eastman Printing Frame

Standard Printing Frames, strongly constructed of suitable material.

Eastman, for $2\frac{1}{4} \times 3\frac{3}{4}$ plates or $1\frac{1}{2} \times 2\frac{1}{2}$ or smaller films . . . . .	\$ .25
Eastman, $2\frac{1}{2} \times 4\frac{1}{4}$ , $3\frac{1}{4} \times 4\frac{1}{4}$ or $4 \times 5$ , opens two-thirds . . . . .	.30
Eastman, $3\frac{1}{4} \times 5\frac{1}{2}$ , for films, opens two-thirds . . . . .	.30
Ditto, for plates . . . . .	.35
Eastman, $5 \times 7$ , opens two-thirds . . . . .	.40

## Kodak Serial Printing Frame



These frames are designed for printing No. 00 Cartridge Films in the continuous strip, making it unnecessary to cut up these small size rolls, as the film slides through the frame from exposure to exposure. No. 1 is provided with tension spring and is especially suitable for printing on Solio paper or from dense negatives, on Velox, where long exposures are required. No. 1A is for use with developing-out paper only, where average exposures are required, contact being maintained by pressure of the fingers as the frame is held up to the light. With no other type of frame can printing be handled so rapidly. The illustration shows No. 1A.

Kodak Serial Printing Frame, No. 1, \$ .35; No. 1A, \$ .40



# Premo Accessories

## Kodaloid Printing Masks

Transparent orange color masks for use with Maskit Printing Frames in sets of three each with different openings.

For $3\frac{1}{4} \times 4\frac{1}{4}$ frame, per set of three . . . . .	\$ .20
For $3\frac{1}{4} \times 5\frac{1}{2}$ frame, per set of three . . . . .	.25
For $5 \times 7$ frame, per set of three . . . . .	.30

Black Paper Masks, same sizes as above.

Price, per set of three, any size . . . . .	\$ .10
---	--------

## Flexo Print Roller

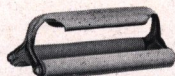


An inexpensive but very satisfactory roller for amateur use; has black enameled frame and a 4-inch rubber roller.

Price, \$ .25

## Kodak Print Roller

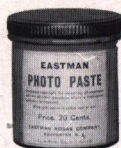
The best roller ever made for general amateur use; has double rubber rollers,  $2 \times 6$  inches, and nickeled frame.



Price, \$ .90

## Eastman Photo Paste

A solid, first quality white paste. Will not Cockle nor discolor print or mount.

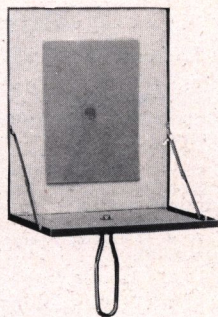


	Jars		Tubes
4 ounce . . . . .	\$ .15	2 ounce . . . . .	\$ .10
8 ounce . . . . .	.25	3 ounce . . . . .	.15
		5 ounce . . . . .	.25

## Flash-light Material

The simplest and safest method of making flashlight pictures is by means of the Eastman Flash Sheets and Kodak Flash Sheet Holder. The sheets burn slowly, giving a broad, soft light, and not so startling the subject as to give a staring effect to the eyes.

The holder is a genuine innovation. A saw tooth holds the sheet in proper position and it is lighted from the back through an aperture provided in the center for the purpose. In this manner the holder is always between the operator and the flash sheet, and it may be held in the hand or supported on a tripod, a socket being provided for the latter purpose.



*No. 1 Flash Sheets, per package of $\frac{1}{2}$ dozen sheets, $3 \times 4$	\$ .35
*No. 2 Flash Sheets, per package of $\frac{1}{2}$ dozen sheets, $4 \times 5$	.56
*No. 3 Flash Sheets, per package of $\frac{1}{2}$ dozen sheets, $5 \times 7$	.84
Kodak Flash Sheet Holder . . . . .	1.00

\*Prices subject to change without notice.



# Premo Accessories

## Developing Trays

Bulls-Eye, $3\frac{1}{4} \times 4\frac{1}{4}$ . . .	\$ .15	Bulls-Eye, $6\frac{1}{2} \times 8\frac{1}{2}$ . . .	\$ .60
Bulls-Eye, $4 \times 5$ or $4 \times 6$ . . .	.17	Bulls-Eye, $8 \times 10$ . . .	.80
Bulls-Eye, $5 \times 7$ . . .	.40		

## Eastman Visible Graduate

This new moulded graduate, as its name implies, may be easily read in the dark-room under the rays of the ruby light.

The graduations are opaque and not translucent as in the case with most graduates.

2 ounce . . .	\$ .25	8 ounce . . .	\$ .50
4 ounce . . .	.35	16 ounce . . .	.75



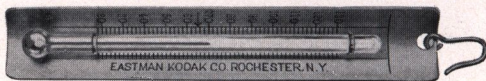
## Thermometer Stirring Rod



Two articles of great use to the amateur, combined in one. The rod is  $\frac{1}{4}$ -inch in diameter and 9 inches long. One end is flattened for crushing purposes. The thermometer is carefully tested and is unusually accurate.

Price, \$1.00

## Eastman Thermometer



Especially suitable for determining the temperature in tank development. Made with curved back to fit inside of tank. Price, \$ .75

## Developing and Printing Outfits

Eastman 3A Outfit includes every requisite for developing by the dark-room method, printing and finishing twenty-four  $3\frac{1}{4} \times 5\frac{1}{2}$  or smaller pictures.

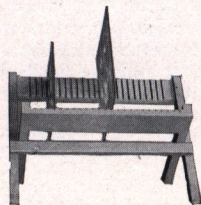
1 Kodak Candle Lamp, 25c; 1 Printing Frame, 30c; 1 Glass for Frame, 5c; 1 4-ounce Graduate, 20c; 1 Stirring Rod, 5c; 4 Developing Trays, 40c; 5 Tubes Eastman's Special Developer, 25c;  $\frac{1}{2}$  pound Kodak Acid Fixing Powder, 15c; 1 package Bromide Potassium, 10c; 2 dozen  $3\frac{1}{4} \times 5\frac{1}{2}$  Velox Paper, 30c; 2 ounces Nepera Solution, for developing Velox, 10c; Instruction Book. These articles if purchased separately would cost \$2.15. Price complete, neatly packed, \$1.65.

A B C Outfit, similar to above, but for  $4 \times 5$  negatives, \$1.65.

## Premo Negative Rack

This rack accommodates negatives of all sizes. It folds flat when not in use.

No. 1, for 12 negatives . . .	\$ .35
No. 2, for 24 negatives . . .	.45





# Premo Accessories

## Plate Holder and Adapter Slides

### Lacquered Pressboard

3¼ x 4¼ .	\$ .25	5 x 7 .	\$ .30	8 x 10 .	\$ .50
3¼ x 5½ .	.25	6½ x 8½ .	.40	11 x 14 .	.75
4 x 5 .	.25				

### Hard Rubber

5 x 7 .	\$ .45	6½ x 8½ .	\$ .60	8 x 10 .	\$ .75
---------	--------	-----------	--------	----------	--------

## Plate Holder Kits

Made of well seasoned wood that will not warp, neatly finished in dead black, and of correct size to nest perfectly.

Size Outside	Size of Opening for Plate		
4 x 5	3¼ x 4, 3¼ x 4¼		\$ .25
5 x 7	3¼ x 4, 3¼ x 4¼, 3¼ x 5½, 4 x 5, 4¼ x 6½		.30
5 x 8	3¼ x 4¼ and 4 x 5		.30
6½ x 8½	3¼ x 4¼, 4 x 5, 3¼ x 5½, 4¼ x 6½, 4¾ x 6½, 5 x 7		.35
7 x 11	5 x 7		.45
8 x 10	4¼ x 6½, 4¾ x 6½, 5 x 7, 6½ x 8½		.45
11 x 14	6½ x 8½, 8 x 10, 10 x 12		.60
14 x 17	10 x 12, 11 x 14		1.00

## Film Pack Developing Hanger

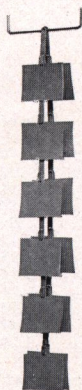


Photo finishing departments employing the vertical tank system will find the Film Pack Developing Hanger indispensable. Each hanger accommodates twelve Film Pack films; the film being fastened to the clips as shown in the illustration, and then doubled over the suspension rod of the tank, by means of a hinge in the center.

After development the films in the hanger are washed to free them from surface developer, and then suspended in the fixing and final washing tanks.

To dry, the hanger is simply opened out, and suspended upon hooks, each film being a sufficient distance from the adjoining one to avoid contact.

### Prices

Film Pack Developing Hanger . . . . .	\$1.25
Extra Clips, for Hangers, per dozen . . . . .	.60

## Eastman Print Paddle

The Eastman Print Paddle is made of hard rubber, and is acid and chemical proof, and is exactly the right shape for the proper handling of prints in the fixing bath.

Eastman Print Paddle, per half dozen . . . . .	\$2.25
Eastman Print Paddle, per dozen . . . . .	4.50







# Premo Accessories

## Card Mounts

### Baltic

Buff, Brown or Grey  
Heavy stock, beveled edge, heavy  
borders—a beautiful rich mount.

For Prints	Size Outside	Per 50	Per 100
1½ x 2½	3¾ x 4¼	\$ .80	\$1.60
2¼ x 3¼	4¾ x 5¾	1.00	2.00
2½ x 4¼	4½ x 6¼	1.10	2.20
3¼ x 4¼	5½ x 6¾	1.15	2.30
2¾ x 4¾	5½ x 7½	1.20	2.40
3¼ x 5½	5¾ x 8	1.30	2.60
4 x 5	6 x 7	1.50	3.00
5 x 7	8 x 10	2.10	4.20

### Triumph

Made in Ash Grey and Aristo Brown

For Prints	Size Outside	Per 50	Per 100
5 x 7	8 x 10	\$2.00	
6½ x 8½	10 x 12	3.00	
8 x 10	12 x 14	3.75	
7 x 11	11 x 15	4.00	

### Riviera

Ash Grey and White

For Prints	Size Outside	Per 50	Per 100
1½ x 2	3 x 3½	\$ .50	\$1.00
1½ x 2½	3 x 3¾	.55	1.10
2¼ x 3¼	3¾ x 4½	.65	1.30
2½ x 4¼	4½ x 5¾	.75	1.45
3¼ x 4¼	4¼ x 5½	.75	1.45
2¾ x 4¾	4½ x 6½	.85	1.70
4 x 5	5½ x 6½	.90	1.80
3¼ x 5½	5 x 7¼	.90	1.80
5 x 7	7 x 9	1.40	2.75

### Enlargement Folder

Made with White Insert Olive Grey  
Cover. Sepia Buff Insert—

For Prints	Size Outside	Per ½ Doz.
5 x 7	7½ x 9½	\$ .72
6½ x 8½	8¾ x 10¾	.84
6 x 10	9 x 13	.96
8 x 10	10¾ x 13	1.02

### Inslip Enlargement Mount

Color, English Grey or Sepia-Buff.

	For Prints	Size Outside	Price Per Dozen		For Prints	Size Outside	Price Per Dozen
A	3¼ x 5½	7¾ x 9¾	\$ .84	E	5 x 8½	9½ x 13½	\$ .96
B	3¾ x 5½	8½ x 9¾	.84	F	6½ x 8½	11½ x 13¾	1.08
C	4¼ x 6½	8½ x 10¾	.84	G	6 x 10	10¾ x 14¾	1.20
D	5 x 7	9¾ x 11¾	.84	H	8 x 10	12¾ x 14¾	1.44
	For Prints	Size Outside	Price Per Half Dozen		For Prints	Size Outside	Price Per Half Dozen
J	10 x 12	15¼ x 17¼	\$1.44	L	8 x 14	14¼ x 20¼	\$ .96
K	7 x 12	12 x 14	.96	M	11 x 14	17¼ x 20¼	1.80

### Sundries

Cable Release . . . . .	\$ .25
Bulbs and Tubes, No. 2 . . . . .	.25
Bulbs and Tubes, No. 3 . . . . .	.35
Film Clips, Kodak Jr. No. 1 . . . . .	.12
Film Clips, Kodak Jr. No. 2 . . . . .	.25
Film Clip, Eastman, 3½-inch, per pair . . . . .	.25
Focus Cloth, Rubber . . . . .	.85
Ground Glass:	
4 x 5 . . . . .	.25
5 x 7 . . . . .	.30
6½ x 8½ . . . . .	.45
8 x 10 . . . . .	.55
Reducing Backs:	
For View Cameras, 5 x 7 . . . . .	10.00
Ditto, 6½ x 8½ . . . . .	11.00
Ditto, 8 x 10 . . . . .	12.00
Ditto, 7 x 11 . . . . .	15.00
Premo View Finder . . . . .	1.50

Milled Head Screws for Cameras:	
½ inch and smaller . . . . .	\$ .15
Larger than ½ inch . . . . .	.20
Stirring Rod, Hard Rubber . . . . .	.30
Shoulder Straps, Black:	
½ x 52 inch with Snaps and Buckles . . . . .	.60
5½ x 52 inch with Snaps and Buckles . . . . .	.75
½ x 66 inch, with Buckle . . . . .	.70
5½ x 74 inch, with Buckle . . . . .	.85
Tan Straps for View Cases with Buckle. Specify style and size of camera when ordering:	
34, 40 and 44 inches . . . . .	.60
52, 60 and 66 inches . . . . .	.75
Tubing, Red or Black, per foot . . . . .	.08



## Tested Chemicals

Eastman Chemical Outfit, consists of M. Q. and Special Developer, Intensifier, Reducer and Velox Re-developer	\$ .40
Eastman Special Developer Powders, per package, 5 in sealed glass tubes	.25
Eastman Hydrochinon Developer Powders, per dozen	.70
Ditto, per ½ dozen	.35
Ditto, per package 5 powders, in sealed glass tubes	.35
Eastman Pyro Developer Powders, per dozen	.50
Ditto, per ½ dozen	.25
Ditto, per package 5 powders, in sealed glass tubes	.25
Tozol, per 1-ounce bottle	.73
Hydrochinon, per 1-ounce can	.38
Eastman Permanent Crystal Pyro, per 1-ounce bottle	.38
Velox, Re-developer Tubes, package of 12 tubes	.84
Hypo Sulphite of Soda, granular, per pound	.13
Alum, powdered, per pound	.25
Kodak Acid Fixing Powder, per pound package	.25
Ditto, per ½-pound package	.15
Ditto, per ¼-pound package	.10
Eastman Intensifier, glass tube, per tube	.15
Eastman Reducer, per box of 5 tubes	.50
Eastman Opaque No. 1, per tube	.15
Potassium Bromide, per ounce can	.13
Acetic Acid, 28 per cent, per 1-pound bottle	.24
Citric Acid, 4-ounce bottle	.70
Eastman Tested Carbonate of Soda (desiccated), per 1-pound bottle	.33
Eastman Tested Sulphite of Soda (desiccated), per 1-pound bottle	.35

These prices subject to change without notice.

## Bausch & Lomb Protar Lens—Series V. F. 18

Designed for extreme wide-angle work, this lens embraces a field of 110 degrees.

No.	Size	Equivalent Focus	Price in Barrel	No.	Size	Equivalent Focus	Price in Barrel
1	4¼ x 6½	3¾ in.	\$23.50	3	6½ x 8½	5⅞ in.	\$29.50
2	5 x 7	4⅞ in.	23.50	4	8 x 10	7⅞ in.	36.50

## Symmetrical Wide-Angle Lens

Has an angle of about 80 degrees and is furnished in cells to interchange with the various lenses supplied on Premo Cameras.

No.	Size	Equivalent Focus	Price in Cells Only	No.	Size	Equivalent Focus	Price in Cells Only
1	4 x 5	3½ in.	\$ 7.50	3	6½ x 8½	6½ in.	\$18.00
2	5 x 7	5 in.	11.00	4	8 x 10	8 in.	22.50

## Terms

The prices in this catalog are strictly net, except to regular dealers who carry our goods in stock. *These prices owing to unsettled conditions are however subject to change without notice.* For the convenience of our customers we recommend that they make their purchases from a dealer in photographic goods, as by so doing they can save both time and transportation charges.

ROCHESTER OPTICAL DEPARTMENT,

EASTMAN KODAK CO.,

ROCHESTER, N. Y.



