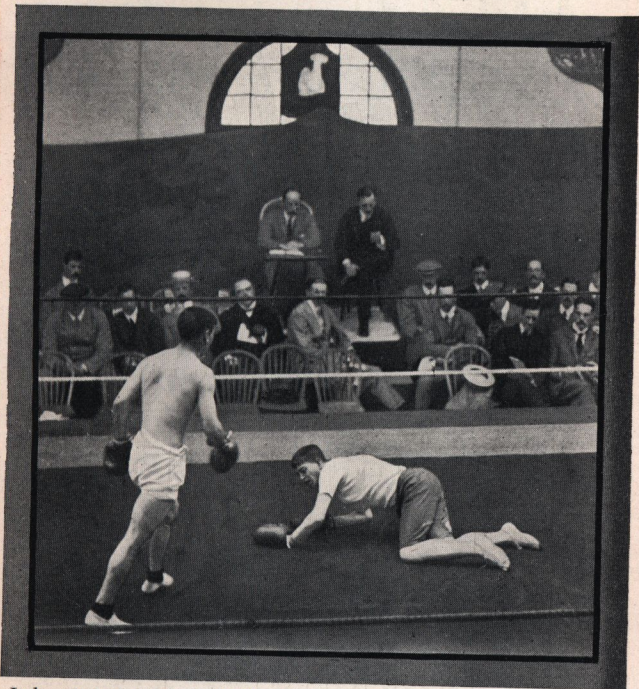


GOERZ LENSES & CAMERAS



Indoor snapshot taken with the Goerz-Anschutz Folding Camera.

C. P. GOERZ
Optical Works, Ltd.,
1 to 6 HOLBORN CIRCUS, LONDON, E.C.

All prices subject to alteration without notice.

Complete Catalogues on Application. 1911 Catalogue ready in March.
Telegrams: "PHOTOPSIA, LONDON."

Telephones: { Goods & Orders: 1696 HOLBORN.
Enquiries & General: 5929 HOLBORN.

The CONVERTIBLE GOERZ.

THE
GOERZ
"Pantar"
F.6.3 to F.8.
 (Singles F.12.5)

The Goerz "Pantar" Anastigmat will be found to have the great covering power and the fine definition which have been characteristic of the older series of Goerz Lenses, and made them so popular among photographers.

Two single combinations of different foci may be combined to form a doublet, as shown in the second of the following tables. Such a combination will be found of the greatest advantage when used in conjunction with a camera having a long bellows extension.

No.	Focus of Single Combinations. Inches.		Focus of complete Lens. In.	Aper-ture.	For Plates.	Mount No.	PRICES.
							£ s. d.
1	6	6	3 $\frac{3}{8}$	F/6.3	3 $\frac{1}{2}$ × 2	I	6 15 0
2	7	6	3 $\frac{3}{8}$	F/6.8	3 $\frac{1}{2}$ × 2 $\frac{1}{2}$	I	7 0 0
3	9 $\frac{1}{2}$	6	4 $\frac{1}{2}$	F/7.7	3 $\frac{1}{2}$ × 3 $\frac{1}{2}$	I	7 5 0
4	7	7	4 $\frac{1}{2}$	F/6.3	3 $\frac{1}{2}$ × 3 $\frac{1}{2}$	I	7 5 0
5	9 $\frac{1}{2}$	7	4 $\frac{1}{2}$	F/7.2	4 $\frac{1}{2}$ × 3 $\frac{1}{2}$	I	7 10 0
6	11 $\frac{1}{2}$	7	5 $\frac{1}{2}$	F.8	4 $\frac{1}{2}$ × 3 $\frac{1}{2}$	II	8 10 0
7	9	9 $\frac{1}{2}$	5 $\frac{1}{2}$	F/6.3	4 $\frac{1}{2}$ × 3 $\frac{1}{2}$	I	7 15 0
8	11 $\frac{1}{2}$	9 $\frac{1}{2}$	6	F/7.2	5 × 4	II	8 15 0
9	14	9 $\frac{1}{2}$	6 $\frac{1}{2}$	F/7.7	5 × 4	III	9 10 0
10	11 $\frac{1}{2}$	11	6 $\frac{1}{2}$	F/6.3	5 × 4	II	9 10 0
11	14	11	7 $\frac{1}{2}$	F/6.8	6 $\frac{1}{2}$ × 4 $\frac{3}{4}$	III	10 5 0
12	16 $\frac{1}{2}$	11	8	F/7.7	6 $\frac{1}{2}$ × 4 $\frac{3}{4}$	IV	12 0 0
13	14	14	8 $\frac{1}{2}$	F/6.3	6 $\frac{1}{2}$ × 4 $\frac{3}{4}$	III	11 0 0
14	16 $\frac{1}{2}$	14	8 $\frac{1}{2}$	F/6.8	7 × 5	IV	12 15 0
15	19	14	9 $\frac{1}{2}$	F/7.2	8 $\frac{1}{2}$ × 6 $\frac{1}{2}$	IV	14 15 0
16	16 $\frac{1}{2}$	16 $\frac{1}{2}$	9 $\frac{1}{2}$	F/6.3	8 $\frac{1}{2}$ × 6 $\frac{1}{2}$	IV	14 0 0
17	19	16 $\frac{1}{2}$	10	F/6.8	8 $\frac{1}{2}$ × 6 $\frac{1}{2}$	IV	16 0 0
18	19	19	11	F/6.3	10 × 8	IV	18 0 0

The Lenses cover at their full aperture larger plates than the above, but are recommended for use with the sizes specified.

Particulars of sets of Pantar Lenses and single combinations in complete catalogue free on application.

C. P. Goerz Optical Works, Ltd., 1 to 6 Holborn Circus, London, E.C.

The LENS for SPEED.

THE GOERZ "Color" F.4.5 to F.5.5

A lens unsurpassed for Photography at high speeds and in dull weather.

This Series of Lenses is specially adapted for instantaneous work of any kind, and for the Shortest exposures ($\frac{1}{1000}$ th of a second or less), Portraiture in the Studio or ordinary room, Lantern and Cinematograph Projection, Enlargements, Reproductions, Three-Colour Work, Telephotography, as well as for Landscapes and Architecture, and in all cases where an extremely wide angle is not required.

The apertures of the different lenses are as follows—No. 000, F/4.5; No. 00 to No. 2 F/4.8; No. 3 to No. 5, F/5; No. 6 to No. 8, F/5.5.

The BACK COMBINATION can be used with a small stop, and has about double the focus of the complete lens.

For Stereoscopic work the Lenses can be accurately paired at an extra charge of 8/-.

No.	Equiv. lens Focus.	Plate Covered		Price with Iris Diaphragm.	Price in Special Focussing Mount.	Price in Sunk Mount for Reflex Cameras.
		at full aperture.	with smaller stops.			
000	$2\frac{3}{4}$	$2\frac{1}{2} \times 1\frac{1}{2}$	$2\frac{3}{4} \times 2$	£ s. d. 4 15 0	£ s. d. 5 10 0	£ s. d. —
00	$3\frac{1}{2}$	$3\frac{1}{2} \times 2\frac{1}{2}$	$4 \times 2\frac{3}{4}$	5 5 0	6 0 0	5 5 0
0	5	$4\frac{1}{2} \times 3\frac{1}{2}$	5×4	5 10 0	6 5 0	5 10 0
1	6	5×4	$6\frac{1}{2} \times 4\frac{3}{4}$	6 10 0	7 5 0	6 10 0
2	7	$6\frac{1}{2} \times 4\frac{3}{4}$	$8 \times 5\frac{1}{2}$	7 10 0	8 5 0	7 10 0
3	$8\frac{1}{2}$	7×5	$8\frac{1}{2} \times 6\frac{1}{2}$	9 5 0	10 5 0	9 5 0
4	$9\frac{1}{2}$	$8 \times 5\frac{1}{2}$	9×7	12 10 0	13 10 0	12 10 0
5	$10\frac{1}{2}$	$8\frac{1}{2} \times 6\frac{1}{2}$	10×8	15 0 0	—	—
6	12	9×7	12×10	17 10 0	—	—
7	14	10×8	14×11	22 10 0	—	—
7a	$16\frac{1}{2}$	12×10	16×14	28 15 0	—	—
8	19	15×12	20×16	33 15 0	—	—

C. P. Goerz Optical Works, Ltd., 1 to 6 Holborn Circus, London, E.C.

The FINEST UNIVERSAL LENS.

THE
GOERZ

“Dagor”
F.6.8.

up to No. 7. Higher numbers F/7.7.

Highly suitable for Portraits, Groups, Instantaneous Work, and Architecture. The “Dagor” permits the use of the largest stop without diminishing the sharpness of the image at the extreme margins of the plate up to an angle of 70°. By the use of a smaller stop an angle of 90° is covered. Definition, brilliancy, and flatness of field are uniform all over the picture.

The Back combination can be used alone and has about twice the focal length of the complete lens.

Each Goerz “Dagor” supplies:—

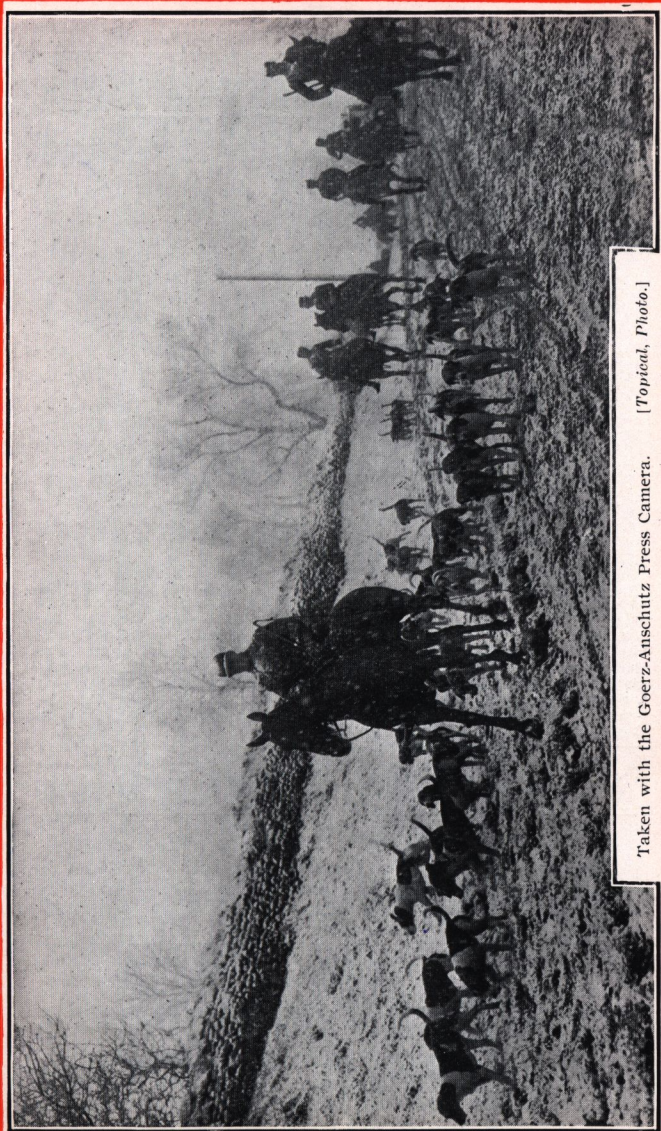
1. **A RAPID LENS** for general purposes.
2. **A WIDE ANGLE LENS** for interiors.
3. **A LONG FOCUS LENS** for distant objects.

No.	Equiv- alent Focus.	Size of Plate sharply covered at			Price with Iris Dia- phragm. £ s. d.	Price in Special Focus- ing Mounts. £ s. d.	Price in Sunk Mount for Reflex Cam- eras. £ s. d.
		Full aperture.	F/16.	F/62.			
0000	1 $\frac{1}{2}$ ₂	1 $\frac{1}{2}$ × 1 $\frac{1}{2}$	2 × 2	2 × 2 $\frac{3}{4}$	4 15 0	—	—
000	2 $\frac{1}{2}$ ₂	2 $\frac{1}{2}$ × 2 $\frac{1}{2}$	2 $\frac{1}{2}$ × 3	2 $\frac{1}{2}$ × 3 $\frac{1}{2}$	4 15 0	—	—
00	3 $\frac{1}{2}$ ₂	3 $\frac{1}{2}$ × 3 $\frac{1}{2}$	3 $\frac{1}{2}$ × 4 $\frac{1}{2}$	4 × 5	5 0 0	5 15 0	5 0 0
0	5	3 $\frac{1}{2}$ × 4 $\frac{1}{2}$	4 × 5	4 $\frac{3}{4}$ × 6 $\frac{1}{2}$	5 5 0	6 0 0	5 5 0
1	6	4 × 5	4 $\frac{3}{4}$ × 6 $\frac{1}{2}$	5 × 8	6 5 0	7 5 0	6 5 0
2	7	4 $\frac{3}{4}$ × 6 $\frac{1}{2}$	5 × 8	7 × 9	7 5 0	8 5 0	7 5 0
3	8 $\frac{1}{4}$	5 × 8	6 $\frac{1}{4}$ × 8 $\frac{1}{2}$	8 × 10	8 15 0	9 15 0	8 15 0
4	9 $\frac{1}{4}$	6 $\frac{1}{4}$ × 8 $\frac{1}{2}$	7 × 9	10 × 12	10 10 0	11 15 0	10 10 0
5	10 $\frac{3}{4}$	7 × 9	8 × 10	12 × 15	12 15 0	—	—
6	12	8 × 10	10 × 12	16 × 18	15 5 0	—	—
7	14	10 × 12	12 × 15	18 × 22	19 15 0	—	—
7a	16 $\frac{1}{2}$	11 × 14	13 × 17	21 × 25	26 0 0	—	—

For Stereoscopic views the lenses are accurately paired at an extra charge of 8/-

Full Catalogue containing particulars of longer foci “Dagors,” the Hypergon Wide-Angle Lens (135° and 110°), etc., sent free on application.

C. P. Goerz Optical Works, Ltd., 1 to 6 Holborn Circus, London, E.C.



Taken with the Goerz-Anschutz Press Camera. [Topical, Photo.]

The INEXPENSIVE GOERZ LENS.

THE
GOERZ

“Syntor”

F.6.8.

THE FINEST LOW-PRICED ANASTIGMAT.

The Goerz “Syntor” is a thoroughly good all-round lens, made with the same care and precision as the other series of Goerz Lenses, and giving that crispness of definition which is typical of all our lenses. It is fast, will give good snapshots, and is excellent also for stand work. The single combination can be used alone as long focus lenses. The “Syntor” has not quite the same covering power as the Goerz “Dagor,” but more than covers the plate for which it is listed, and will allow of the rising front being used without cutting off. **A Cheap, Excellent Lens for Hand-Cameras, and can be recommended with the Utmost Confidence.**

No.	Eq. Focus Inches.	For Plates. Inches.	Price in ordinary mount.	Price in Spec- ial Focussing mount.	Price in sunk mount for Re- flex Cameras.
0	5	$4\frac{1}{4} \times 3\frac{1}{4}$	£ s. d. 3 5 0	£ s. d. 4 0 0	£ s. d. 3 10 0
1	6	5×4	3 15 0	4 10 0	4 0 0
2	7	$6\frac{1}{2} \times 4\frac{3}{4}$	4 10 0	5 5 0	4 15 0
3	$8\frac{1}{2}$	7×5	6 5 0	7 0 0	6 10 0

The “Syntor” F/6.8 is well corrected for chromatic and spherical aberration, and for astigmatism. The angle covered at F/6.8 is 64° ; by the use of smaller stops this angle can be increased to 70° . A plate having a base line equal to the focal length of the “Syntor” used is excellently covered. Where a considerable displacement of the lens from the centre is desired the next longer focus is recommended.

For Stereoscopic work the lenses can be accurately paired at an extra charge of 8/-.

C. P. Goerz Optical Works, Ltd., 1 to 6 Holborn Circus, London, E.C.

GOERZ LENSES IN SHUTTERS

The Goerz Lens can be fitted to practically all the popular Between-Lens Shutters. Lenses up to $8\frac{1}{2}$ inches focus are usually in stock ready fitted to shutters, but in any case can be fitted in two or three days. In those cases where a charge for fitting to the camera is made, an estimate of cost will be given, if desired.

"Dagor." F/6.8.

No.	Focus Inches.	With Goerz Sector Shutter.	With Compound Shutter.	With Koilos Shutter.	With B. & L. Automat Shutter.	With B. & L. Volute Shutter.
		£ s. d.	£ s. d.	£ s. d.	£ s. d.	£ s. d.
0	5	8 15 0	7 0 0	7 0 0	6 6 0	8 17 0
1	6	9 15 0	8 0 0	8 0 0	7 6 0	9 17 0
2	7	10 15 0	9 5 0	9 5 0	9 10 0	10 17 0
3	$8\frac{1}{2}$	12 5 0	11 3 0	11 3 0	11 12 0	12 12 6
4	$9\frac{1}{2}$	15 0 0	12 18 0	—	13 7 6	14 7 6
5	$10\frac{1}{2}$	17 5 0	15 15 0	—	15 12 6	16 12 6
6	12	19 15 0	—	—	18 2 6	19 9 0
7	14	—	—	—	—	23 19 0

"Celor." F/4.5—5.5.

No.	Focus Inches.	With Goerz Sector Shutter.	With Compound Shutter.	With Koilos Shutter.	With B. & L. Automat Shutter.	With B. & L. Volute Shutter.
		£ s. d.	£ s. d.	£ s. d.	£ s. d.	£ s. d.
0	5	9 0 0	7 10 0	7 10 0	6 11 0	9 2 0
1	6	11 0 0	8 18 0	8 18 0	8 15 0	10 7 6
2	7	12 0 0	10 10 0	10 10 0	10 7 6	11 7 6
3	$8\frac{1}{2}$	—	12 10 0	—	12 2 6	13 9 0
4	$9\frac{1}{2}$	—	—	—	—	16 14 0

"Syntor." F/6.8.

No.	Focus Inches	With Goerz Sector Shutter.	With Compound Shutter.	With Koilos Shutter.	With B. & L. Automat Shutter.	With B. & L. Volute Shutter.
		£ s. d.	£ s. d.	£ s. d.	£ s. d.	£ s. d.
0	5	6 15 0	5 0 0	5 0 0	4 6 0	6 17 0
1	6	7 5 0	5 15 0	5 15 0	4 16 0	7 7 0
2	7	8 0 0	6 12 0	6 10 0	6 15 0	8 2 0
3	$8\frac{1}{2}$	10 15 0	8 13 0	8 13 0	9 2 6	10 2 6

Prices of "Pantars" in Between-Lens Shutters on Application.

C. P. Goerz Optical Works, Ltd., 1 to 6 Holborn Circus, London, E.C.

GOERZ TELEPHOTO LENSES

These lenses are of an entirely new construction, have a definition and covering power unequalled by any other telephoto lens, and are of the greatest service for photographing subjects inaccessible to the camera with the usual lens.

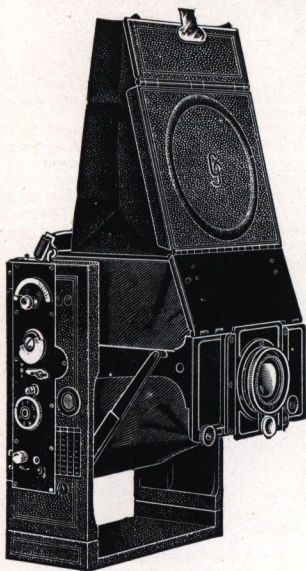
The telephoto attachment consists of the negative lens and tube, prices of which follow, and these must be combined with a positive lens, generally the one in ordinary use on the camera.

COMBINATION OF			Focus.	Negative Lens Focus.	Price of Negative Lens with tube.		
For following Goerz or similar Lens.		£			s.	d.	
QUARTER PLATE.							
Dagor	...	No. 0	5	1 1/2	4	0	0
Syntor	...	" 0	5	1 1/2	4	0	0
Celor	...	" 0	5	1 1/2	4	5	0
Dagor	...	" 0	5	2 1/2	4	15	0
Syntor	...	" 0	5	2 1/2	4	15	0
Celor	...	" 0	5	2 1/2	4	15	0
5 x 4							
Dagor	...	" 1	6	2 3/4	4	15	0
Syntor	...	" 1	6	2 3/4	4	15	0
Celor	...	" 1	6	2 3/4	5	0	0
Dagor	...	" 1	6	3	5	15	0
Syntor	...	" 1	6	3	5	15	0
Celor	...	" 1	6	3	5	15	0
HALF PLATE.							
Dagor	...	" 2	7	2 3/4	5	0	0
Syntor	...	" 2	7	2 3/4	5	0	0
Celor	...	" 2	7	2 3/4	5	5	0
Dagor	...	" 2	7	3	6	0	0
Syntor	...	" 2	7	3	6	0	0
Celor	...	" 2	7	3	6	0	0
Dagor	...	" 2	7	3 1/2	7	0	0
Syntor	...	" 2	7	3 1/2	7	0	0
Celor	...	" 2	7	3 1/2	7	0	0
Dagor	...	" 3	8 1/2	3	6	5	0
Syntor	...	" 3	8 1/2	3	6	5	0
Celor	...	" 3	8 1/2	3	6	5	0
Dagor	...	" 3	8 1/2	3 1/2	7	5	0
Syntor	...	" 3	8 1/2	3 1/2	7	5	0
Celor	...	" 3	8 1/2	3 1/2	7	5	0

Booklet on Telephotography, 6d. post free.

C. P. Goerz Optical Works, Ltd., 1 to 6 Holborn Circus, London, E.C.

GOERZ FOLDING REFLEX



A New Type of Instrument Embodying the Advantages of the Reflex with the Portability of the Folding Camera.

The Goerz Folding Reflex is made for one size of plate only—the popular 5×4 . When folded the depth from back to front is $\frac{3}{8}$ inches only. Simply **lifting up the lens-panel opens and extends** the camera with the lens focussed, and the mirror and hood in position ready for use. **One movement only is required.** Closing the camera is effected with similar facility.

The camera is not fragile, but when set up is as rigid as the box pattern reflex. It has all the advantages of the latter, and differs from it only in being compact and light enough to carry without inconvenience.

A Focal Plane Shutter—the latest self-capping Goerz-Anschutz pattern giving time and bulb exposures, as well as automatic and instantaneous exposures, from 5 seconds to $\frac{1}{1200}$ second is fitted.

Either the Goerz “Dagor” F/6.8 or “Celor” F/4.8 can be supplied with the camera.

The Goerz Folding Reflex is provided with a Reversing Back.
For plates or films.

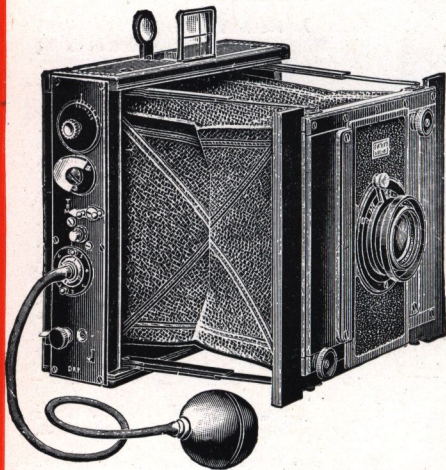
Prices (5 × 4 only).

	£	s.	d.
Goerz Folding Reflex, fitted with Goerz “Celor” F/4.8, without slides or accessories	23	0	0
Goerz Folding Reflex, fitted with the Goerz “Dagor” F/6.8, without slides or accessories	23	0	0
Double Dark Slides, each	0	12	0
Plate Changing Box, for 12 plates	2	0	0
Daylight Cartridge Roll Holder	1	10	0
Goerz Film Pack Adapter (for Premo Film Pack)	1	0	0
Leather Case for Camera and 6 dark slides (or changing box, or roll holder, or film pack adapter)	1	2	6
Light Wooden Stand	0	18	6

C. P. Goerz Optical Works, Ltd., 1 to 6 Holborn Circus, London, E.C.

GOERZ-ANSCHUTZ

FOLDING CAMERA.



Slit altered, and all speeds adjusted from the outside.

The latest model of the Goerz - Anschutz Folding Camera is fitted with an improved form of focal plane shutter, giving speeds from 1/1200th second to 5 seconds, all regulated from the outside. **SLR**

The shutter is self-capping, so that the plate or film is not exposed during setting. Exposures can be altered before or after shutter is set.

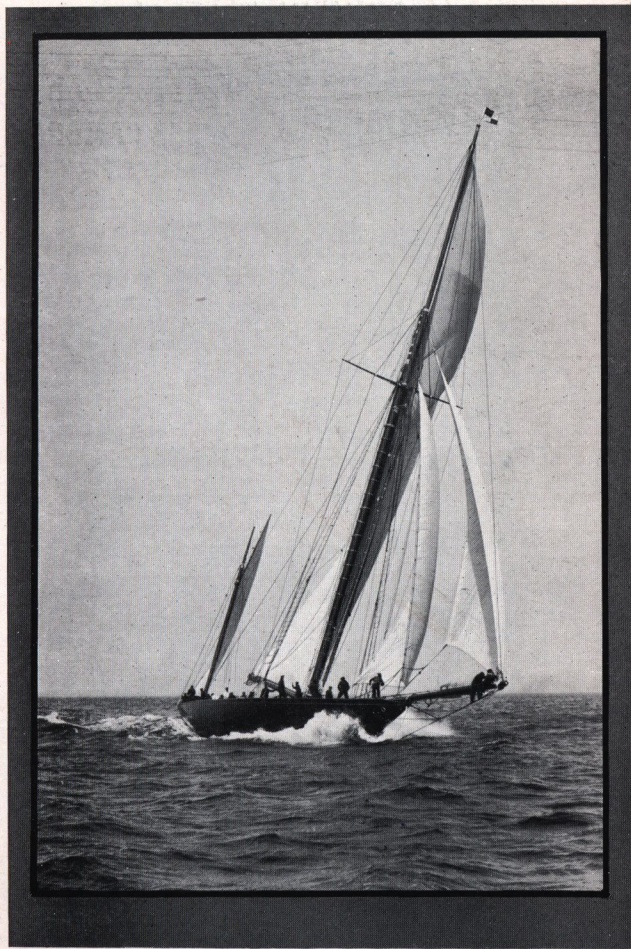
The camera can be fitted with Telephoto Lens and extension for use of Single Combination of Lens.

PRICE LIST.

	4½ × 3½	5 × 4	Postcard 10 × 15 cm. 5½ × 3½	6½ × 4½
	£ s. d.	£ s. d.	£ s. d.	£ s. d.
For Plates ...				
Goerz-Anschutz Folding Camera, complete with Goerz "Celor" Lens F/4.8, Three Double Dark Slides and Case ...	14 14 0	15 14 0	16 17 0	18 11 0
Do., do., with Goerz "Dagor" F/6.8, do.	14 9 0	15 14 0	16 17 0	18 11 0
Do., do., with Goerz "Syntor" F/6.8, do.	12 9 0	12 19 0	14 2 0	15 11 0
Extra Double Dark Slides, each ...	0 12 0	0 12 0	0 14 0	0 16 0
Plate Changing Box for 12 Plates ...	2 0 0	2 0 0	2 5 0	2 8 0
Roll Holder ...	1 10 0	1 10 0	1 15 0	2 0 0
Film Pack Adapter...	1 0 0	1 0 0	1 5 0	1 5 0

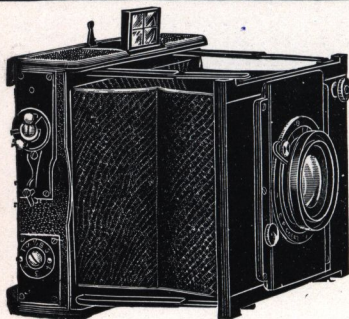
Complete List on Application.

C. P. Goerz Optical Works, Ltd., 1 to 6 Holborn Circus, London, E.C.



Taken with the Goerz-Anschutz Folding Camera.

GOERZ-ANSCHUTZ



TROPICAL AND PRESS CAMERA

Similar to the ordinary Goerz-Anschutz Folding Camera but specially adapted for Tropics and rough usage.

The bellows is of Russian leather, to withstand the attacks of insects; special impregnated wood is used so that bending or warping is practically impossible; steel is almost entirely discarded in favour of brass and German silver, and the steel spring of the shutter is so heavily coppered and nickelled as to possess all the non-rusting properties of those two metals.

The Goerz-Anschutz Focal-Plane Shutter (Model A) is fitted, giving time and instantaneous exposures, and automatic exposures from $\frac{1}{2}$ to 5 seconds. The shutter has no complicated mechanism, and in the unlikely event of repairs being needed, could be adjusted by any mechanic or handy-man.

Although primarily intended for use in trying climates, this camera, owing to its simplicity, strength, and efficiency, is largely used by the leading press photographers.

Made in quarter-plate, 5x4 post-card, half-plate and stereoscopic.

PRICE LIST.

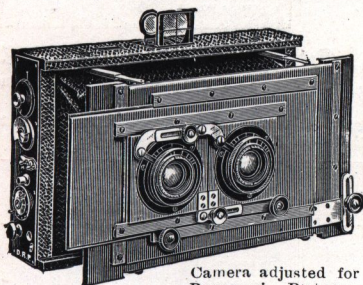
Sizes of Plates	4 $\frac{1}{4}$ x 3 $\frac{1}{4}$ in.	5 x 4 in.	6 $\frac{1}{2}$ x 4 $\frac{3}{4}$ in.
	£ s. d.	£ s. d.	£ s. d.
Goerz - Anschutz Tropical Camera, complete with Goerz "Dagor" Lens f/6.8, 3 Double Dark Slides and Case	14 17 6	16 19 0	19 14 6
Do., do., with Goerz "Celor" f/1.8, do.	15 2 6	16 19 0	19 14 6
Do., do., with Goerz "Syntor" f/6.8, do.	12 17 6	14 4 0	16 14 6
Extra Double Dark Slides, each	0 14 0	0 14 0	0 18 6
Plate Changing Box for 12 plates	2 5 0	2 5 0	2 15 0
Roll Holder	1 15 0	1 15 0	2 5 0
Film Pack Adapter	1 0 0	1 0 0	1 5 0

Complete List on Application.

C. P. Goerz Optical Works, Ltd., 1 to 6 Holborn Circus, London, E.C.

GOERZ-ANSCHUTZ

STEREOSCOPIC CAMERA.



Camera adjusted for
Panoramic Pictures.

For Plates, Film
Packs, or Daylight
Loading Roll Films

The stereoscopic model of the Goerz-Anschutz Folding Camera retains all the popular features of the latter camera, and has all the adjustments essential to an instrument being used for stereoscopic work.

The separation of the lenses is variable, so that the relief in the picture can be controlled, the division is removable, and the camera is adapted for panoramic or panel work.

Apart from its utility for rapid exposures, a Focal Plane Shutter as fitted to the Goerz-Anschutz Camera has no small advantages for stereoscopic work. The extra efficiency of this type of shutter enables the worker to use his lens at stops small enough to give required depth of focus, and yet to make instantaneous exposures. Moreover, both lenses receive exactly the same exposure.

PRICE LIST.

Size of Plates.	10 × 15 cm. (5½ × 3½)	6½ × 3¼
	£ s. d.	£ s. d.
Goerz-Anschutz Folding Camera with Goerz "Dagor" Lens F/6.8, 3 slides and Case	23 7 0	23 16 0
Extra Double Dark Slides, each	0 14 0	0 16 0
Plate Changing Box for 12 Plates	2 5 0	2 8 0
Roll Holder	1 15 0	—
Film Pack Adapter	1 3 0	—

Complete Catalogue on Application.

SPECIAL MODEL FOR TROPICS—See preceding page.

C. P. Goerz Optical Works, Ltd., 1 to 6 Holborn Circus, London, E.C.

KODAKS WITH GOERZ LENSES

These convenient roll film cameras can be obtained ready fitted with Goerz Lenses, or the lenses can be fitted to customers' own Kodaks in a few days. Quotations for fitting on application to any dealer.

The Goerz Lens will enable the worker to obtain excellent snapshots under practically all weather conditions.

	With Automat Shutter and "Dagor."	With Automat Shutter and "Celor."	With Automat Shutter and "Syntor."
	£ s. d.	£ s. d.	£ s. d.
No. 1 Folding Pocket Kodak, fitted with focussing adjustment	9 3 6 (Simplex)	—	—
No. 1a Folding Pocket Kodak, fitted with focussing adjustment	9 16 6 (Simplex)	—	7 16 6 (Simplex)
No. 1a Special Folding Pocket Kodak	9 0 0	9 11 6	7 0 6
No. 3a Folding Pocket Kodak	9 10 0	10 1 0	7 10 0
No. 3a Folding Pocket Kodak	11 7 6	12 19 6	8 17 6
No. 4 Folding Pocket Kodak	11 7 6	12 19 6	8 17 6
No. 4a Folding Pocket Kodak, with 7 inch lens	14 12 0	—	11 17 0
No. 4a Folding Pocket Kodak, with 8½ inch lens	16 2 0	—	13 12 0
No. 4a Speed with 7 inch lens	17 15 0*	19 0 0*	15 0 0*
No. 4a Speed with 8½ inch lens	19 13 0*	—	17 3 0*
No. 4 Screen Focus Kodak	12 11 0	—	10 1 0
Stereo Hawkeye No. 4	18 5 0	—	14 5 0
No. 1 Panoram Kodak (with ordinary shutter)	8 10 0	—	—
No. 4 Panoram Kodak (with ordinary shutter)	10 0 0	—	—

The Goerz Lenses can be detached from the different Kodaks (except the Panoram Kodaks) and used, if required, upon other cameras.

The full aperture of the Goerz "Celor" is F/4.8, but when fitted to the Nos. 3a and 4 Folding Pocket Kodaks the largest aperture obtainable is F/5 (except when a Compound Shutter is used, when aperture is F/4.8). To obtain the full aperture with the other shutters on these cameras a shutter is needed too large to be fitted to the camera.

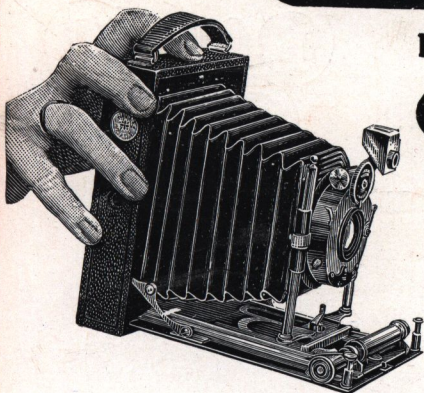
Particulars of Kodaks with Goerz Lenses fitted with Goerz Sector, Compound, and Kollos Shutters in

FULL LIST ON APPLICATION.

* Camera being fitted with a Focal Plane Shutter no Lens Shutter is supplied.

C. P. Goerz Optical Works, Ltd., 1 to 6 Holborn Circus, London, E.C.

GOERZ



POCKET TENAX

The Small,
Practical
Camera.
No larger
than the
hand!

The Goerz "Pocket Tenax" is a folding hand camera in which compactness has been especially studied, with the result that the **size** of the instrument has been brought to **the irreducible minimum**. Elegant in appearance and beautifully made, portability has been obtained without a sacrifice of efficiency. A smaller camera for the same sizes of plates cannot be made if the advantages of the "Tenax" are to be retained. The camera is fitted with a Goerz Lens, either the "Dagor" or "Syntor" series, and in the quarter-plate size the "Celor" F/4.8 can also be fitted; and is provided with a special compound shutter giving exposures from 1 second to 1/250th of a second as well as time and bulb exposures. The double extension is sufficient to enable objects within a few feet of the camera to be focussed with the single lens. A diagonal rack and pinion is provided for focussing, and the finder closes up in the camera. Fitting for tripod both ways. All these advantages are obtained in a camera no more than 1 1/4 in. in thickness in 5 x 4 size.

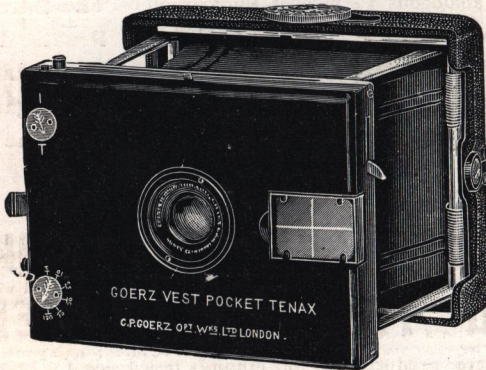
Prices of "Pocket Tenax" Cameras and Accessories.

	4 1/4 x 3 1/2	5 x 4	Postcard, 5 1/2 x 3 1/2 and 10 x 15 cm.	Stereo- scopic.
	£ s. d.	£ s. d.	£ s. d.	£ s. d.
Camera with Compound Shutter fitted with Goerz "Syntor"	8 0 0	9 0 0	9 10 0	12 16 0
Camera with Compound Shutter fitted with Goerz "Dagor"	10 0 0	11 0 0	12 0 0	16 16 0
Camera with Compound Shutter fitted with Goerz "Celor"	10 10 0	—	—	—
Film Pack Adapter	0 8 0	0 10 0	0 10 0	0 10 0
Single Slides	0 2 3	0 3 6	0 4 6	0 4 6
Leather Case, holding camera and film pack adapter, or camera and three or six slides	0 7 6	0 7 6	0 10 0	0 12 6

C. P. Goerz Optical Works, Ltd., 1 to 6 Holborn Circus, London, E.C.

GOERZ VEST POCKET TENAX

A Waistcoat Pocket
Camera giving prints
7 × 5 inches by an
Automatic Enlarger.



Taking plates $4\frac{1}{2} \times 6$ cm. ($1\frac{3}{4} \times 2\frac{5}{8}$) the Vest Pocket Tenax is a thoroughly practical little instrument. Fitted with a shutter with speeds from $\frac{1}{2}$ to $\frac{1}{100}$ th second and the Goerz Lens, and focussing adjustment, the camera can, owing to its size be made a constant companion and be carried on occasions when a larger camera must of necessity be left behind. The results are of surprising sharpness, and although contact prints can of course be made, most of the users of the camera will adopt the Vest Pocket Tenax Enlarger by which prints up to 7×5 can be produced with the same ease and facility as direct prints, and with practically equal sharpness.

The Goerz Vest Pocket Tenax can also be used as a fixed focus camera when all objects from 15 feet to infinity are rendered perfectly sharp.

PRICE.

	£	s.	d.
Goerz Vest Pocket Tenax with Goerz "Dagor" and 6 slides in two purse cases	10	0	0
Do., Do., with Goerz "Syntor" and 6 slides in two purse cases	7	10	0
Extra Single Slides, each	0	3	0
Film Pack Adapter	0	15	0
Goerz Automatic Vest Pocket Tenax Enlarger for pictures up to 7×5 -in., with one slide	4	10	0
Daylight Enlarger	2	0	0

VEST POCKET TENAX BOOKLET ON APPLICATION.

C. P. Goerz Optical Works, Ltd., 1 to 6 Holborn Circus. London, E.C.