

BUSCH LENSES, CAMERAS & BINOCULARS

can be obtained from all up-to-date Opticians and Photographic Dealers

THROUGHOUT THE WORLD.

Complete Lists sent on Application.

If you want the best article you can buy, at the least possible cost, order one of "Busch" manufacture. The Factory, having been established in 1800, has the accumulated experience of over 100 years to aid them in turning out the very best optical work at the lowest possible price.

Telegraphic Address:
PURELLO, LONDON.

Telephone:
2563 CENTRAL.

BUSCH'S WIDE ANGLE APLANAT.

F16,

Angle, 90° to 95°.

A SERIES of Wide Angle Lenses constructed in a portable form to give great illumination combined with a very extensive field of view. They are absolutely free from distortion and other optical defects. The relative short focus makes them specially suitable for the taking of high and broad objects at a short distance such as Architecture, Interiors, and Panoramic Views.



No.	Focus. Inches.	Med. Diaphragm.	Covering Plates			Circle of covering with smallest Diaphragm diameter Inches.	Price			
			With smallest Dia- phragm giving equality of illumina- tion over the whole surface of plate.				£	s.	d.	
1	4½	4½ × 3½	...	7 × 5	...	12	...	1	8	0
2	6	7 × 5	...	9 × 7	...	16	...	1	12	0
3	7½	9 × 7	...	12 × 10	...	20	...	2	11	0
4	9½	12 × 10	...	16 × 12	...	34	...	3	5	0

EMIL BUSCH OPTICAL CO. {
(Incorporating the Busch Camera Co.) }

35 Charles Street.
Hatton Garden, London, E.C.

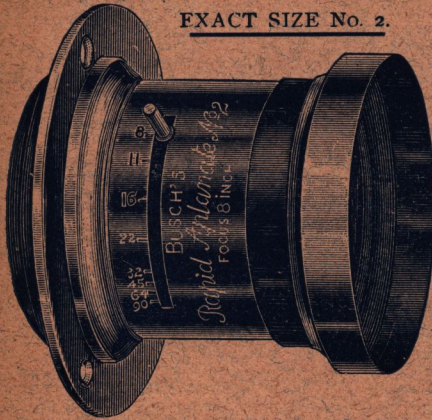
[See following page.]

BUSCH'S APLANATS.

EXACT SIZE No. 2.

RAPID APLANAT.

F8. ANGLE, 75°.



THIS is a series of very fine Rectilinear Lenses of Symmetrical Construction, therefore quite free from distortion, consisting of two Achromatic Combinations, optically corrected. Aided by the specially tested Jena Glass, with the peculiar nature of the curves, it has been possible to produce in a mount nearly half the size of the ordinary French and English models, a lens which, covering well at full aperture, will, when stopped down, give a brilliant picture two or three sizes larger, thus becoming a Wide Angle Lens when used on a larger size plate.

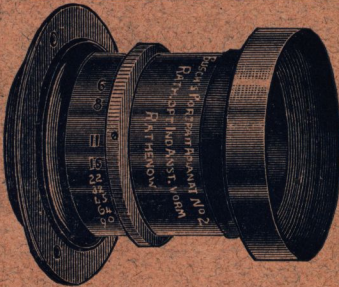
No.	Focus. Inches.	Covers Plate.	Smaller Diaphragm.	Price with Iris D.aphragm.	Price with Waterhouse Diaphragm.
1	6	4 1/2 x 3 1/2	6 1/2 x 5 1/2	£1 10 0	£1 5 0
2	8	6 1/2 x 4 1/2	10 1/2 x 8 1/2	1 13 0	1 8 0
3	10	8 1/2 x 6 1/2	12 1/2 x 10 1/2	2 5 0	2 0 0
4	13	11 x 9	16 x 12	3 0 0	—
5	18	13 x 10	20 x 16	4 5 0	—
6	24	15 x 12	24 x 20	8 15 0	—

Nos. 1 and 2 can be had paired for Stereoscopic work at extra charge of 5/-

PORTRAIT APLANAT.

F6. ANGLE, 65°.

AN entirely new construction of Portrait Lenses especially designed for Studio work and Instantaneous effects. The Lenses are of large aperture, admitting of much light and giving a brilliant picture. Aided by the specially tested Jena Glass, the construction is such as to give a very flat field and perfect definition over the whole surface of the plate at full aperture. They are of symmetrical construction, absolutely free from distortion, and can be used also with great advantage for all general purposes such as Copying, Enlarging, Interiors, &c.



No.	Diameter of Lenses.	Equivalent Focus.	HALF NATURAL SIZE NO.		
			Covers at full Aperture.	With smaller Diaphragm.	Price, Iris Diaphragm.
1	1 1/2 ins.	5 ins.	3 1/2 x 2 1/2	4 1/2 x 3 1/2	£1 15 0
2	1 7/8 "	7 "	4 1/2 x 3 1/2	7 x 5	2 7 6
3	2 1/4 "	11 "	7 x 5	9 x 7	3 3 0
4	2 7/8 "	14 "	9 x 7	12 x 10	4 4 0
5	3 1/4 "	18 "	10 x 8	15 x 12	9 5 0

EMIL BUSCH OPTICAL CO. (Incorporating the Busch Camera Co.)

35 Charles Street, Hatton Garden, London, E.C.

BUSCH

DETECTIVE

APLANATS.



Nos. 1 and 2, F6.

No. 2½, F6.5.

No. 3, F7.

ANGLE, 70 degrees.

“The possessor of a Busch Detective Aplanat is not dependent on brilliant sunshine, but can take photographs in dull as well as fine weather.”

A SERIES of Jena Glass Lenses, specially constructed for Hand Camera and Stereoscopic work. The greatest care is exercised in the grinding of the deep curves which characterise this, as also the Rapid Aplanat series, in order to secure perfect freedom from Optical defects.

Working at a larger aperture, and being shorter in focus than the Rapid Aplanats, they are specially recommended for Hand Camera work.

Two Series are made, **A** and **B**, mounted in oxidised brass. Series **A** are for use on cameras that have a focussing adjustment.

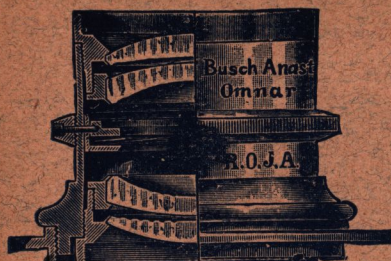
No.	Equiv. Focus.	Covers at full Aperture.	With Smaller Diaphragm.	SERIES A as block.			SERIES B, with Helical Focussing jacket.			With Unicum Shutter.		
				£	s.	d.	£	s.	d.	£	s.	d.
1	4 in.	3⅛ × 2⅞ in.	4¼ × 3½ in.	1	5	0	2	2	0	2	5	0
2	5 in.	4¼ × 3¼ in.	6 × 4¼ in.	1	10	0	2	7	6	2	10	0
2½	6½ in.	5 × 4 in.	7 × 5 in.	1	15	0	2	12	0	2	15	0
3	7 in.	6 × 4 in.	8¼ × 5½ in.	1	15	0	2	12	0	2	15	0

Nos. 1 and 2 of Series **A** and **B** can be paired for Stereoscopic work at extra charge of 5/-

Nos. 1 and 2 of Series **B** only can be paired and fitted with simultaneous focussing adjustment.

Mounted on Aluminium Plate, 18/- extra; Mounted on Brass Plate, 16/-

EMIL BUSCH OPTICAL CO. { 35, Charles Street,
(Incorporating the Busch Camera Co.) { Hatton Garden, London, E.C.



BUSCH "OMNAR" ANASTIGMAT LENSES.

Series III. II and I.

(F7.7, F5.5, & F4.5.)
Patented in all Countries.

The Latest, Best, and Lowest Priced Flat Field Lenses.

In conformity with our established policy, we have in the Busch Anastigmat produced a Lens of the highest quality at the least possible cost.

The Busch Anastigmats are characterised by their ability to render sharp and clearly defined images at full aperture to the extreme margin of the plate for which they are listed.

They are therefore specially suitable for architectural subjects copying and snapshots in dull light, when the full aperture can be used and perfect marginal definition secured.

The Busch Anastigmat is composed of two Symmetrical combinations, each being corrected both for Spherical and Chromatic aberrations, and astigmatism eliminated. The extreme angle of the Lens is 80 degrees, and over this angle curvature of the field is entirely absent.

Consequent on the Symmetrical construction, there is an absolute freedom from distortion, and a perfectly rectilinear image is produced.

Each combination being fully corrected, the back Lens can be used alone for Landscape and Portraiture, the focal length being about $1\frac{1}{2}$ times that of the complete Lens.

Series III. F7.7.

No.	Equiv. Focus.	R.P.S. Standr'd Flange.	Covering sharp to edge of Plate at F 7.7	Covering Circle with Smallest Diaphragm.	Model A ordinary mount Iris Diaphragm.			Model B with Helical Focussing movement Iris Diaph.			With Unicum Shutter.		
					£	s.	d.	£	s.	d.	£	s.	d.
1	3 $\frac{1}{2}$	1	3 $\frac{1}{2}$ × 2 $\frac{1}{2}$	6	2	10	0	3	15	0	4	0	0
2	5 $\frac{1}{8}$	1 $\frac{1}{2}$	4 $\frac{1}{2}$ × 3 $\frac{1}{2}$	8 $\frac{1}{2}$	3	0	0	4	2	6	4	7	6
2 $\frac{1}{2}$	6	1 $\frac{3}{8}$	5 × 4	10	3	7	6	4	10	0	4	15	0
3	7 $\frac{1}{2}$	1 $\frac{1}{2}$	7 × 5	11 $\frac{3}{4}$	3	15	0	—	—	—	—	—	—
4	10	2	9 × 7	15 $\frac{1}{2}$	6	15	0	—	—	—	—	—	—
5	13	2 $\frac{3}{8}$	11 $\frac{1}{2}$ × 9 $\frac{1}{2}$	19 $\frac{1}{2}$	9	15	0	—	—	—	—	—	—

Series II. F5.5.

No.	Diam. of Lenses.	Equiv. Focus.	Covering sharp to edge of Plate.	Covering Circle with smallest Diaphragm.	Ordinary Mount Model A.			Helical Focussing movement Model B.			With Unicum Shutter Model U.		
					£	s.	d.	£	s.	d.	£	s.	d.
1	$\frac{3}{4}$	3 $\frac{1}{8}$	3 $\frac{1}{2}$ × 2 $\frac{1}{2}$	5	3	0	0	—	—	4	15	0	0
2	1	5 $\frac{1}{8}$	4 $\frac{1}{2}$ × 3 $\frac{1}{2}$	7	3	15	0	4	10	0	5	10	0
2 $\frac{1}{2}$	1 $\frac{1}{8}$	6	5 × 4	8 $\frac{1}{2}$	4	10	0	5	5	0	7	7	6
3	1 $\frac{3}{8}$	7 $\frac{1}{2}$	6 $\frac{1}{2}$ × 4 $\frac{1}{2}$	10 $\frac{1}{2}$	5	10	0	6	10	0	—	—	—
4	1 $\frac{5}{8}$	10	9 × 7	14 $\frac{1}{2}$	8	15	0	—	—	—	—	—	—
5	2 $\frac{1}{8}$	13	11 × 9	18	14	10	0	—	—	—	—	—	—
6	3 $\frac{1}{8}$	17 $\frac{1}{2}$	15 × 11	25	22	10	0	—	—	—	—	—	—

Series I. F4.5.

No.	Diam. of Lenses.	Equiv. Focus.	Covers Plate.		Covering Circle.	Prices with Iris Diaphragm.								
			F 4.5	F 8		Ordinary Mount Model A.	With Helical Focussing Movement Model B.		In Unicum Shutter Model U.					
							£	s.	d.	£	s.	d.	£	s.
2	1 $\frac{1}{4}$	5 $\frac{1}{2}$	4 $\frac{1}{2}$ × 3 $\frac{1}{2}$	5 × 4	7 $\frac{1}{2}$	4	10	0	5	5	0	5	10	0
2 $\frac{1}{2}$	1 $\frac{3}{8}$	6	5 × 4	6 $\frac{1}{2}$ × 5	8 $\frac{1}{2}$	5	10	0	6	10	0	7	7	6
3	1 $\frac{1}{2}$	7 $\frac{1}{2}$	6 $\frac{1}{2}$ × 4 $\frac{1}{2}$	8 × 6	10 $\frac{1}{2}$	7	10	0	8	10	0	—	—	—
4	2	10	9 × 7	10 × 8	14 $\frac{1}{2}$	12	10	0	—	—	—	—	—	—

The smaller sizes can be paired for Stereoscopic Cameras, extra 5/-
Model B paired and fitted with simultaneous focussing adjustment.— Mounted in Brass Plate, 16/- extra; mounted in Aluminium Plate, 18/-.

The

'BIS-TELAR'**A New Busch Tele-Objective****Brings Telephotography within the sphere of Practical Photography.**

This is a new Busch Lens of remarkable construction, designed to give the Photographer the advantage of telephotography without the inconveniences that attend such work.

The "Bis-Telar" may be described as a long-focus lens which requires only a short bellows extension.

By its use on an ordinary Hand Camera with the ordinary extension, an image can be obtained approximately twice as large as that given by the lens usually attached to such cameras.

The Busch "Bis-Telar" has the following advantages:—

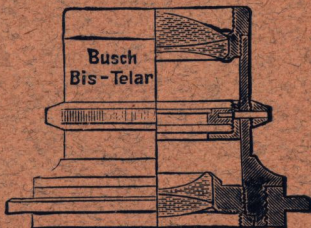
1. It is no larger than the ordinary R. R. or Aplanat lenses.
2. It can be fitted to almost any shutter.
3. It is a complete lens requiring no attachments, &c.
4. It gives sharp definition at full aperture $f/9$.
5. It can be used for instantaneous exposures, snap-shots, portraiture and landscapes, in Spring, Summer, Autumn and Winter.
6. Owing to the small number of reflecting surfaces it produces brilliant pictures.
7. It renders a photographic image with a true and natural perspective.
8. Its use is as simple as an ordinary lens.

With the "Bis-Telar" Lens you can obtain good pictures of long distance scenery.

With the "Bis-Telar" Lens you can obtain a large image for portraits without placing the sitter so near the camera as to produce distortion of the perspective.

With the "Bis-Telar" Lens you can obtain a better and more natural perspective with all your pictures.

An illustrated booklet is published on the "Bis-Telar" Lens, which can be had free on application.



No	Standard Thread Flanges Inches	Focus in Inches	Camera Extension necessary for objects at infinity. Inches.	Recommended primarily for Cameras.	Other sized Cameras for which they may be used.	In ordinary Brass Mounts. Mod. A.	Prices with Iris Diaphragms.		In cells only to fit Shutters, including Leather-covered Pocket Case.
							In Focussing Mount. Mod. B.	With Unicum Shutter. Mod. U.	
1	1½	7	4½	3¼ × 2¼	4½ × 3¼	33/0	—	58/0	33/0
2	1½	10	5½	4¼ × 3¼	5 × 4 4½ × 3½ and 5 × 4	36/0	51/0	61/0	36/0
3	2	14	8½	6½ × 4½		48/0	63/0	85/6	48/0

EMIL BUSCH OPTICAL CO. { 35, Charles Street,
(Incorporating the Busch Camera Co.) { Hatton Garden, London, E.C.

Busch Aplanat Shutter Sets, f 8.



THESE Sets consist of our Aplanat Lenses, mounted in Cells to fit interchangeably to the "Unicum" Shutter, which has time and instantaneous movements from 1 to 100th of a second, with pneumatic and finger release. The Shutter works between the Lenses, and the Iris diaphragm forms part of the Shutter mount. Three models are made, giving Lenses singly and in combination of 5 to 8 different foci.

Models A and B are useful for Cameras of $\frac{1}{4}$, 5×4 , and $\frac{1}{2}$ -Plate sizes.

Model C for Cameras up to Whole-plate size.

Each Set is neatly fitted into a brown leather covered case, easily carried in the coat pocket.

A card, giving tables of combination and F values, given with each Set.

Model A consists of the Unicum Shutter and four Lenses mounted in cells, numbered I. and II. These Lenses in combination give three different foci of 6, 7, and 8 inches; and singly, 12 and 16 inches. Price, complete in case

£4 5s.

Model B consists of the Unicum Shutter and six Lenses, numbered O, I. and II., which, in combination, give foci of $4\frac{3}{4}$, 5 $\frac{1}{2}$, 6, 7, and 8; and singly, 9 $\frac{3}{4}$, 12, and 16 inches.

£5 5s.

Model C consists of the large size Unicum Shutter, with six Lenses, numbered I., II., and III., which, in combination, give foci of 6, 7, 8, 9, and 10; and singly, 12, 16, and 20 inches.

£5 15s.

EMIL BUSCH OPTICAL CO.
(Incorporating the Busch Camera Co.)

35 Charles Street,
Hatton Garden, London, E.C.

BUSCH APLANAT SETS, f8.

THESE sets consist of our Aplanat Series of Lenses, Nos. 1, 2, and 3, mounted interchangeably to fit one mount. The various Lenses give, in combination and singly, nine different foci, ranging from 6 to 20 inches. The Lenses being fully corrected, a larger working aperture is secured than that given by the "Vaide Mecum" Sets.

Price £4 15 0

STEREOSCOPIC SETS.

Consists of the same series of lenses as above, but each single lens of same focus exactly paired.

Two lens bodies are supplied, and two flanges.

Price £5 10 0

BUSCH "VAIDE MECUM" SETS.

With 29 different combinations and focal lengths from 4 to 30 in.

Including 3 Optically-worked Orthochromatic Screens in case similar to above. £3 10 0

THE "SKYSHADE"

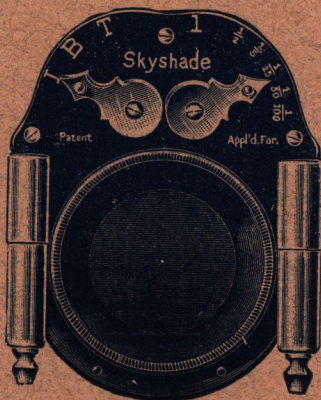
A NEW SHUTTER

For Equalising Exposure of the Foreground and Sky.

Enables you to secure pictures with cloud effects from

ONE NEGATIVE.

Can be attached to any Lens in a moment.



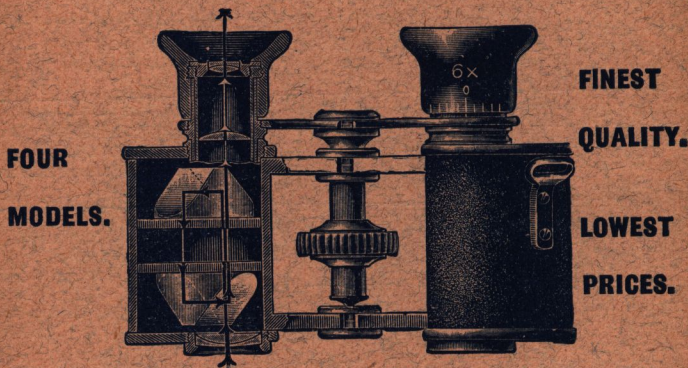
Secures a properly exposed foreground in Landscapes and Street Scenes.

Suitable for Lenses of all kinds whether fitted with ordinary Shutters or not.

Write for Particulars, mentioning this Journal.

EMIL BUSCH OPTICAL CO. { 35, Charles Street,
(Incorporating the Busch Camera Co.) { Hatton Garden, London, E.C.

BUSCH PRISM BINOCULARS.



Busch Prism Binoculars are of the finest Optical and Mechanical Quality, and are unsurpassed by any others on the market.

The "Ultralux" and "Terlux" Models are advantageous as regards illumination. They give an image respectively twice and three times as bright as that given by other Prism Binoculars.

The "Lynkop," "Ultralux," and "Terlux" Models are made with central screw focussing movement, and the "Roja" focusses with eye-cup only.

PRICES, WITH BEST SOLID LEATHER CASES—

	Power	4	6	8	9	12 times
		£	£	£	£	£
"ULTRALUX"		—	6 5 0	6 15 0	—	—
"LYNKOP"	5	0 5 10	0	—	6 5 0	7 5 0
"ROJA"		—	4 10	0 4 15 0	—	—
"TERLUX"		—	7 10 0	—	7 15 0	8 5 0

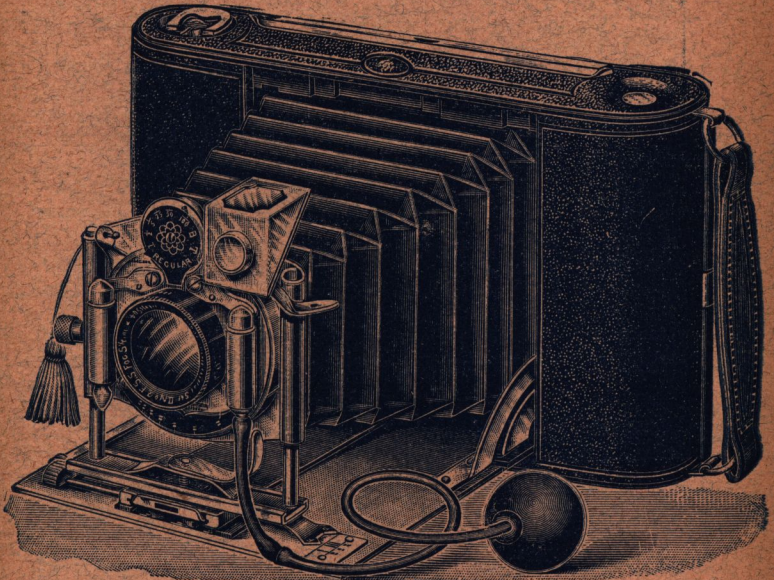
EMIL BUSCH OPTICAL CO. (Incorporating the Busch Camera Co.) 35, Charles Street, Hatton Garden, London, E.C.

"THE FREEWHEEL"

IS

THE KING OF ROLL FILM AND PLATE CAMERAS.

It has been much Improved, and is the most complete and useful Camera on the market.



BRITISH MADE.

WITH THIS CAMERA

- YOU** CAN
1. Expose a Plate without disturbing the Film.
 2. Focus the image on a screen for exposure on a Plate at any time without removing the Film.
 3. Wind back the Film on to the original spool or any distance necessary.
 4. Focus on the Screen for Films without removing any part of Camera.
 5. Stretch the Film taut equal to the surface of a Plate.

No Plate Adapter required for use of Plates.

Model B, with Detective Aplanat, F6	£5	15	0
" C, " "Omniar" Anastigmat, F7.7	7	7	6
" D, " " " " " " F5.5	8	0	0

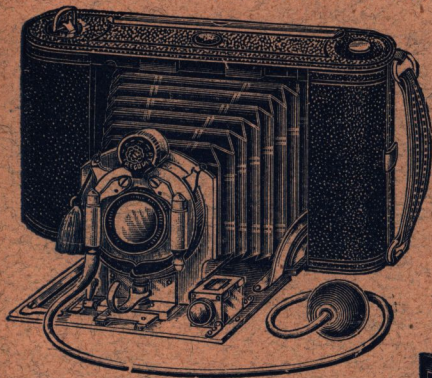
Three Plate Holders and Screens for Films and Plates, 9/- Plate Holders, 1/6 each.
 If with Wollensak Automatic Everset Shutter, 5/- extra.
 Black or Brown Solid Leather Case, 5/6.

EMIL BUSCH OPTICAL CO. {
 (Incorporating the Busch Camera Co.)

35, Charles Street,
 Hatton Garden, London. E.C.

The "Freewheel." Model A. Patented.

For Roll Films (Daylight Loading) and Plates $4\frac{1}{4} \times 3\frac{1}{4}$.



This Camera has the following New Features:

You can

1. Expose a Plate without disturbing the Film.
2. Focus the image on the screen for exposure on a Plate at any time without removing the Film.
3. Wind back the Film on to the original spool or any distance necessary.

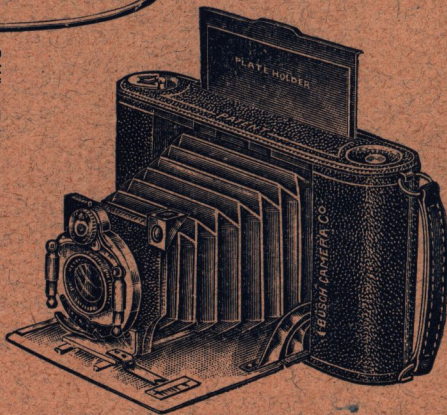
No Plate Adapter or attachments of any kind are required beyond the Plate Holder itself, which is of metal only a trifle thicker than the Plate.

The alternate exposure of Plate and Film does not necessitate the removal of any part of the Camera.

It is fitted with a Special Busch Rapid Rectilinear Lens of fine quality having an aperture of F8, and a Wollensak "Regular" Shutter having time and instantaneous movements from 1 to rooth second, with finger and pneumatic release.

The front when drawn out is automatically held in position at the infinity point for either Plates or Films, a scale of distances and a Clamp being provided for nearer objects.

A Brilliant Reversible Finder and a bush for stand and strut for use on table or other support for vertical pictures.



SHOWING PLATE HOLDER BEING INSERTED IN FRONT OF THE FILM.

£3 12s. 6d.

Three Plate Holders and Screen in Case, 7/6.

Extra Plate Holder, 1/6 each. Solid Leather Case, 5/6.

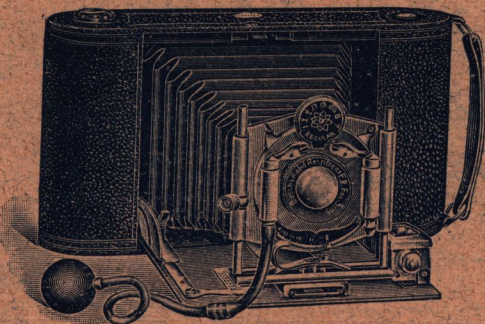
This Camera takes the ordinary Roll Film of all makes. A hooded back can be supplied at an extra cost of 3/6 each.

EMIL BUSCH OPTICAL CO. (Incorporating the Busch Camera Co.) } 35, Charles Street,
Hatton Garden, London, E.C.

“Pockam.”

QUARTER-PLATE (DAYLIGHT-LOADING)
FOR ROLL FILMS AND GLASS PLATES.

Busch
Lens.



£3 3s.

THIS Camera is of the Folding Pocket type, the body being made of mahogany and aluminium, covered with black grained leather. It folds up to the thickness of a book, and can be carried in the coat pocket.

The extensive use of light metals in the construction of this Camera makes it very advantageous to tourists travelling abroad, where the climatic changes will not so easily affect the body of the Camera as in the case of those constructed entirely of wood.

It has a Rising and Sliding Front, a Reversible Brilliant View-Finder. A Bush is provided for use on a stand, and a support when desiring to take vertical pictures.

Horizontal pictures are taken when the Camera is in the normal position, an advantage, bearing in mind the fact that the majority of pictures are taken in that position.

MODEL A is fitted with a special Busch R.R. Lens working at F8, and giving fine definition at full aperture. Price **£3 3s.**

“ **B** is fitted with the well-known Busch Detective Aplanat F6, an aperture large enough for snapshots, even in dull weather. Price **£4 4s.**

“ **C** is fitted with Busch “Omnar” Anastigmat, Series III., F7.7, and Unicum Shutter. Price **£6.**

“ **D** is fitted with Busch “Omnar” Anastigmat, Series II., F5.5. Price **£7.**

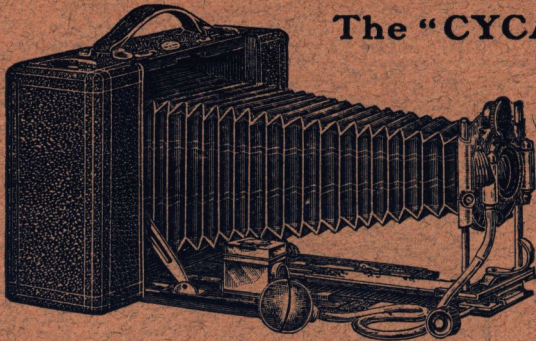
The prices given above are for Camera for use of films only. For use of plates and films a special back is provided, the hood of which is made light-proof, so that in either case only one back is required.

The prices of Camera for use of plates and films, including spring-hooded focussing screen, three single metal slides in leatherette envelope, are—Model A, **£3 14s. 6d.**; Model B, **£4 15s. 6d.**; Model C, **£6 11s. 6d.**; Model D, **£7 11s. 6d.** Plate Adapter Backs can be had at any time as extras at a cost of **13s. 6d.** each, including three slides and screen and envelope. Extra slides, **1s. 6d.** each. Envelopes for three slides, **1s.** each. Case, **5s. 6d.**

EMIL BUSCH OPTICAL CO. } 35 Charles Street,
(Incorporating the Busch Camera Co.) } Hatton Garden, London, E.C.

FOR ROLL FILMS AND PLATES 5 × 4.

The "CYCAM."



TRIPLE EXTENSION.—For use of Back Combination. Copying and Reproduction.
 SPEED SHUTTER.—1 to 100th Seconds. **BUSCH LENSES.**
No Plate Adapter required for Plates. Everything up-to-date and complete.
The Smallest and most Complete Plate Camera on the market
 for Pictures 5 by 4.

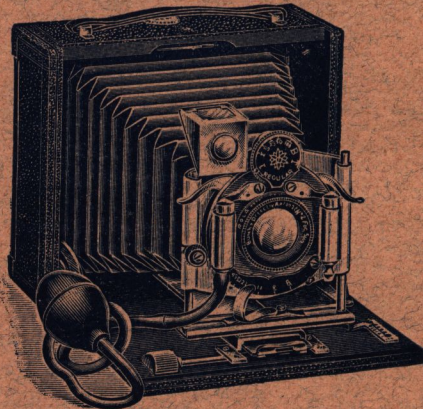
Model A	F 6.5	Detective Aplanat	£6	10	0
" B		Omnar Anastigmat	F 7.7	8	2	6
" C			F 5.5	9	2	6

Hooded Screen and 6 Single Slides in Envelopes, 17/6 extra.

The Triple Extension "BEECAM."

$\frac{1}{4}$ -PLATE.

Speed Shutter.
 1 to 100th second
 Busch Lenses.
 For Copying and
 Reproduction.
 Landscape and
 Portrait Work.



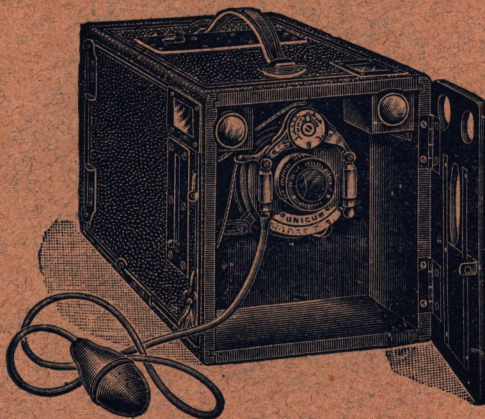
This Camera is of similar construction to the ordinary "Beecam," but has a Bellows and Rack Extension sufficient to enable the use of the back combination of the Lens. A very compact and useful Camera.

IN SOLID LEATHER CASE WITH 3 SINGLE SLIDES AND SCREEN.

Model A	with Busch R R F 8 Lens	£4	4	0
" B	with Detective Aplanat	F 6	5	5	0
" C	with Omnar Anastigmat	F 7.7	6	14	0
" D	" "	" "	F 5.5	7	9	0

EMIL BUSCH OPTICAL CO. { 35 Charles Street,
 (Incorporating the Busch Camera Co.) { Hatton Garden, London, E.C.

THE "PURCAM."



A Magazine Camera to hold 12 Glass Plates, which can be instantly changed after exposure.

All the latest up-to-date and necessary fittings.

BUSCH LENSES.

Model A—F/8 Lens,
£3 10 0

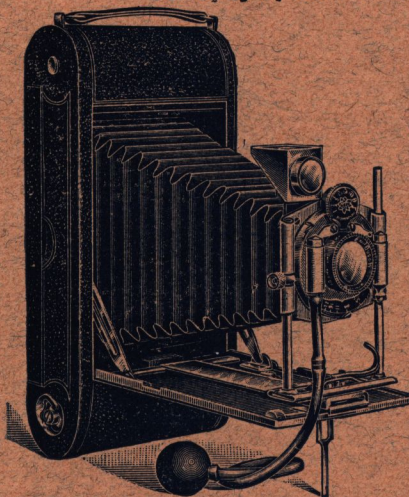
Model B—F/6 Lens
£4 10 0

Model C—Anastigmat,
F/7.7, £6 0 0

Model D—Anastigmat,
F/5.5, £6 15 0

The "ALBUM" Postcard Camera.

For 5½ by 3½ Roll Films and Plates.



The "Album" Postcard Camera is fitted with all the necessary movements of a first-class Camera, and has a rising and sliding front, a rack and pinion focussing movement and focussing scale for distances, a Brilliant Reversible Finder, two bushes for use on stand for both horizontal and vertical pictures, and a strut for supporting the Camera as shown in the illustration.

Each model is fitted with a Wollensak Automatic Shutter, which requires no setting, and gives reliable speeds from 1 to 100th second with time and pneumatic release.

Model A—With Busch Detective Aplanat, F7 ... £5 12 6

Model B—With Busch "Omnar" Anastigmat, No. 2½ Series III., F7.7 ... £7 5 0

Model C—With Busch "Omnar" Anastigmat, No. 2½ Series II., F5.5 ... £8 10 6

Three Double Plate-holders extra with Glass Screen, 24/- Plate-holders, 7/6 each.

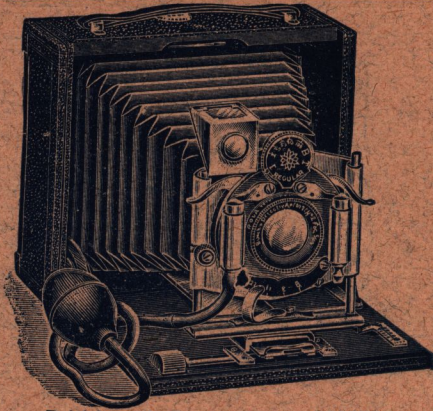
EMIL BUSCH OPTICAL CO. {
(Incorporating the Busch Camera Co.)

35, Charles Street,
Hatton Garden, London, E.C.

THE "BEECAM."

Folding Camera for
1/4-plate Pictures.

Rising and Sliding Front.
Unicum Shutter.
Speeds 1 to rooth second.
Rack and Pinion Focussing
Movement, with Scale of
Distances.



A well-made and very Port-
able Camera, supplied com-
plete in Solid Leather Case,
with Three Single Metal
Plate-holders.

British made Camera.

PRICES.

	4 1/2 x 3 1/4	5 x 4
With F 8 Busch Lens	£3 7 6	4 0 0
Same Camera, with Busch Detective Applanat F6	4 4 0	4 15 0
" " " " Anastigmat F 7.7	5 14 0	6 7 6
" " " " " F 5.5	6 9 0	8 0 0
Extra Plate Holders	0 1 6	0 2 0

THE "TELECAM"

For Roll Films and Plates, 4 1/2 by 3 1/4.
A Double Extension Roll Film Camera, with
Rack and Pinion, sufficient to use the back
combination of the Lens, for Tele-Photography, and
Copying, &c.

Automatic
Shutter with
Speed from 1 to
rooth second.

Model A—Busch
RR F/8, £4 4s.

Model B—Busch
Detective Applanat
F/6, £5 5s.

Model C—Busch
Omnar Anastigmat
F/7.7, £6 15s.

Model D—Busch
Omnar Anastigmat
F/5.5, £7 10s.

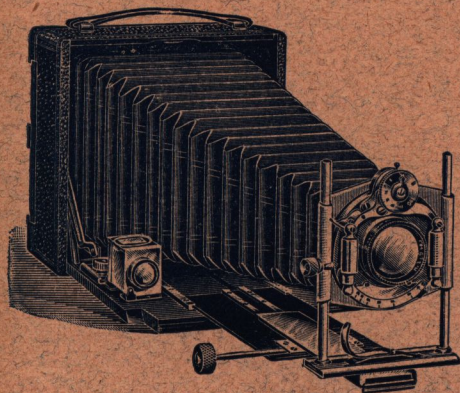


No adapter required for plates. Back is flush with Camera. Special Hooded
Screen and 3 Slides in Envelope, 8s. 6d. extra.

EMIL BUSCH OPTICAL CO. { 35, Charles Street,
(Incorporating the Busch Camera Co.) { Hatton Garden, London, E.C.

NEW MODEL

"ROYAL" Beecam Camera.



For Plates 5 × 4.

WITH
Triple Extension
AND
Swing Back.

DIMENSIONS,
6½ × 6 × 2½ in.

THIS Camera is constructed on the same lines as the Beecam, but has a triple extension, enabling the use of lenses of various focal lengths up to 13 inches, and the back combination of the lens listed with each Camera.

The new movement will be found of great advantage for long-distance Landscapes Portraiture, and Reproduction.

It is strongly made and elegantly finished, and, notwithstanding the great extension, is very compact, being in bulk the smallest Camera of its kind on the market.

A new and ingenious arrangement for swinging the back at an angle is a feature that will be appreciated by the experienced, as well as the novice, because of its great reliability.

The Camera has all the movements that are necessary to the most expert worker, and is wonderfully free from complicated movements, and is, therefore, to be strongly recommended to all desiring a complete outfit.

It can be had with any of the Busch Lenses, and also the Busch Aplanat Shutter Sets, for which it is most suitable. With the Camera and an Aplanat Set of Lenses the photographer can undertake any kind of work, from any and every possible position.

Views of distant scenery or closely confined situations, head and full-length portraits, can be obtained, which with ordinary cameras and lenses would be impossible.

The "Royal" Beecam is supplied with Three Single Metal Slides and a Solid Leather Carrying Case.

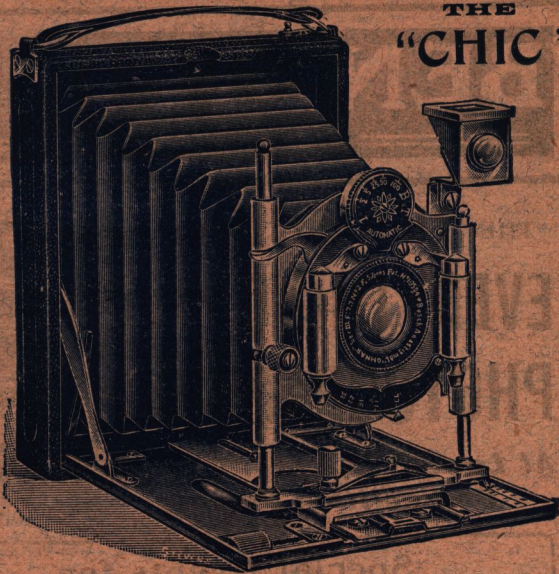
Model A	With Special Busch Rapid Rectilinear Lens, F8 ..	£5	5	0	
" B	With Busch Detective Aplanat, F6 5	6	5	0
" C	With Busch "Omniar" Anastigmat, F7 7	7	17	6
" D	With Busch "Omniar" Anastigmat, F5 5	8	17	6
" E	With Busch Aplanat Shutter Set, Model A, having Lenses of 6, 7, 8, 12 in. Focus, F8	7	6	6
" F	With Busch Aplanat Shutter Set, Model B, having Lenses of 4½, 5½, 6, 7, 8, 9½, 12 in focus	8	7	6

Extra Slides. 2s. each.

EMIL BUSCH OPTICAL CO. (35, Charles Street,
(Incorporating the Busch Camera Co.) Hatton Garden, London, E.C.

THE
"CHIC"

A . . .
Real . . .
Pocket
Camera
with
all
necessary
adjust-
ments.



The Smallest $\frac{1}{4}$ -Plate Camera in the world, fitted with a Speed Shutter from 1 to 100th second.

Only one inch in thickness.

Beautifully made and finished, and covered in real leather. It has a Rack and Pinion adjustment, Rising and Sliding Front, Reversible View Finder, Single Metal Plate Holders, "Busch" Lens, Automatic Shutter 1 to 100th sec., Special Hooded Focussing Screen.

PRICES, including 3 Slides and Screen,
and Envelope—

Model A —Busch RR. F8 Lens	£4 0 0
Model B —Omnar Anastigmat, F7.7	6 2 6

Note.—The camera is so very small that only these two Lenses can be fitted.

A special feature in so small a Camera is the working of the Rack and Pinion in centre of slide, ensuring the parallelism of the front and back of Camera.

THE SMARTEST CAMERA ON THE MARKET.

EMIL BUSCH OPTICAL CO. { 35 Charles Street,
(Incorporating the Busch Camera Co.) { Hatton Garden, London, E.C.

[See preceding pages