



WINSO

NEW YORK OFFICE
18 East 22nd Street.

We carry at this office a
sample line of Ansco's and
other cameras for the inspec-
tion of our customers. We
also furnish information.

AMATEUR CAMERAS AND SUPPLIES

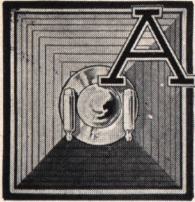


THE ANTHONY & SCOVILL COMPANY
BINGHAMTON, NEW YORK, U. S. A.

Copyright 1906
Anthony & Scovill Co.
Binghamton, N. Y.

Rogers & Company, Chicago and New York

AnSCO And What It Stands For



NSCO is an abbreviation of the name Anthony & Scovill. It is the exponent of the photographic experience accumulated by the E. & H. T. Anthony & Company and The Scovill & Adams Company, the pioneer manufacturers of photographic cameras and supplies in this country. The prefix of the word AnSCO, therefore, to any camera or article used in photography is simply to qualify that such an article is the highest evolution of its kind or type, be it camera, film, paper or any photographic appliance. There are many other trade marks for photographic cameras and materials; but those are simply coined names, by which goods may be advertised; but AnSCO means the result of photographic experience.

E. & H. T. Anthony & Company commenced to manufacture cameras in this country when photography first came into existence at the time of the daguerreotype, and have since furnished everything required by the photographer, and have introduced new appliances to simplify the work of the professional. In so doing photography was made so easy that gradually amateur photography sprung up, becoming as it is today, a popular pastime as well as a present day necessity.

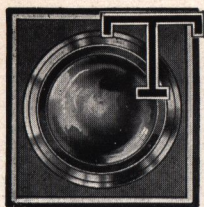
The line of AnSCO cameras opens a new era for film photography, as it places films on a par with glass plates. The one serious objection to a film camera, from the standpoint of the expert, was that it did not provide means for focusing directly on the ground glass or screen; but the AnSCO folding cameras are supplied with a Vidil focusing back for use with the AnSCO-Vidil focusing film, so that if the amateur wishes to focus and still use film, he may use the AnSCO-Vidil film. If he cares nothing for focusing and wants to be guided entirely by his focusing scale he may use any film.

The AnSCO-Vidil film serves all the purposes of a dry plate, with additional advantages of compactness, ability to load and

unload in daylight, as well as safety from breakage. It will last as long as a plate because of its being packed with opaque black gelatine instead of black paper, which is the principal cause of deterioration in film.

We also supply a dry plate attachment for Ansco cameras, fitted with a double dry plate holder, to enable the amateur to use dry plates, specially the well known Hammer dry plates, which are made in all varieties to suit the special requirements of the case ; viz: Extra Fast, Slow, Non-Halation, Orthochromatic, etc. An Ansco with this attachment becomes a very complete dry plate camera.

The Lens Question



THE makers of expensive lenses claim that it is the lens that makes the picture and in a measure this assertion is true; but almost any lens will produce good pictures, providing the proper care is taken to bring about the desired results.

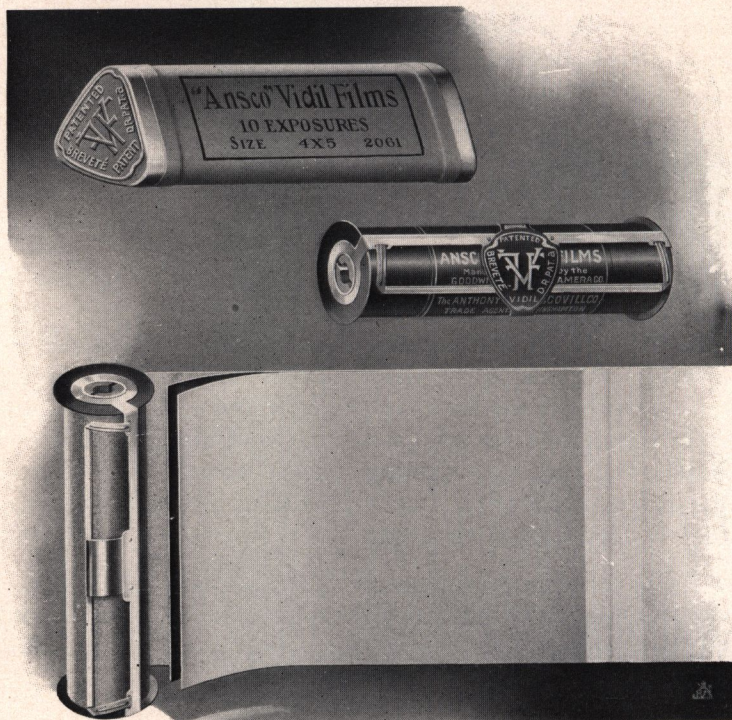
The speed of the shutter, and the size of the opening of the lens,—generally called the diaphragm or stop—must be in harmony with the power of the lens. The opening must be small enough to make it cut a sharp picture. The smaller the opening necessary in a lens to make a sharp picture, the slower the lens is, and the slower the shutter must be that is used with such a lens.

All of the Ansco cameras are fitted with suitable lenses, and the shutters are adapted to the rapidity of the lenses, enabling all the cameras to make good snap-shots on an ordinary bright day.

When lenses of still greater speed are required, we must look for them in the Anastigmat class, and we recommend the Goerz series III. Anastigmat, and next to that, the Goerz type B series I. B lens, fitted with the New Automatic Shutter. Under good light conditions these lenses may be used with high-speed shutters for photographing the most rapidly moving objects, but the great advantage of the Anastigmat consists in making *slow instantaneous* exposures on days or under conditions when they would be out of the question with a single lens, or even with so-called rapid rectilinear lenses.

A good Anastigmat lens of established reputation, such as the Goerz, which we recommend, has always a value. The acquisition of one of these lenses may therefore be looked upon in the light of an investment, not an expenditure.

The Ansco-Vidil Film System



THE Ansco-Vidil films are daylight loading cartridge films, but packed in a new and special manner, possessing many great advantages over the ordinary form of roll film. *Every Film bears the trade-mark.*

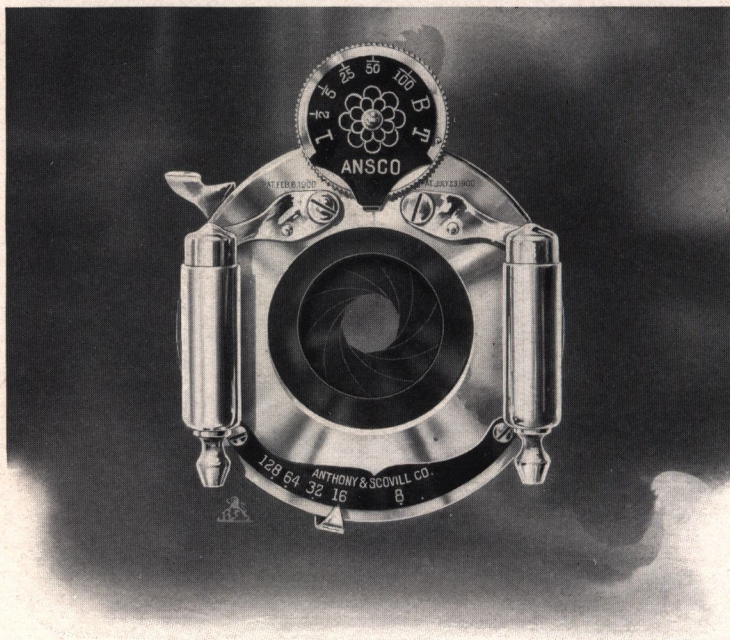
In selecting a folding camera of whatever style or make, the purchaser should give special attention to the Ansco-Vidil Film System and should be careful to ascertain whether the new camera he is purchasing will take the Ansco-Vidil spools; for this new system offers so many advantages that it is bound to supersede to a great extent, all other systems of photography.

A spool of Ansco-Vidil film has before the first film and between every succeeding film, a focusing screen, consisting of a tough semi-transparent parchment paper, enabling the photographer to focus accurately before each exposure, and answers the same purpose as a ground glass screen, with the

decided advantage that after focusing it is only necessary to turn the winding key to bring the film into position. There is therefore no shaking of the camera or shifting of the focus, as it happens with a dry plate camera in which it is necessary to insert the plate holder in front of the ground glass after focusing.

Exact focusing when using roll film, has heretofore been impossible, but the Ansco-Vidil film has solved the problem. With this film one can see the image full size of the film, before exposure, which is a decided advantage over the ordinary small view finder.

The New Automatic Shutter WITH RETARDING DEVICE



THE New Automatic shutter fitted with retarding device or speed regulator is the most ingenious, durable and reliable shutter on the market, and its many new features will strongly appeal to amateur photographers. It has triplicate movements operating for time and bulb exposures. The mechanism is so arranged that after an exposure is completed, the shutter automatically sets itself for the next picture. There can never be a question as to whether or not the shutter is set. It is ready at all times, being released and set instantaneously by either the finger or by the pressure of the bulb.

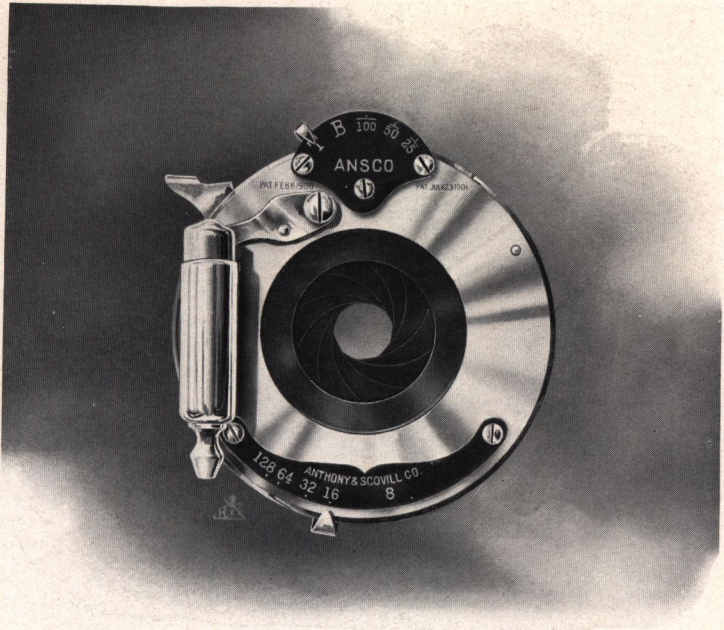
A dial at the top contains various degrees of speed marked in fractional parts of seconds.

To regulate the Automatic shutter it is only necessary to revolve the dial until the speed desired is opposite the index.

The Iris diaphragm, also a feature of the shutter, is operated by a lever at the bottom. The scale for the size of the opening of the lens is marked in the U. S. system.

The Anso Folding cameras, No. 6, 7 and 10, are fitted with the New Automatic shutter.

The Winner Automatic Shutter



THE most important part of a camera, next to the lens, is the shutter. The No. 4, 5 and 9 Anco cameras are equipped with the Winner shutter, which is a one-valve automatic shutter. Its various speeds are regulated and indicated by an index at the top, and covers a range of exposure from time and bulb to instantaneous. The Iris diaphragm is regulated by means of an index and scale at the bottom. The shutter is always closed and set for the next exposure.

Price

<i>New Automatic Shutter (No Lens)</i>		<i>The Winner Automatic Shutter (No Lens)</i>	
3¼ x 4¼	\$ 8.00	3¼ x 4¼	\$4.00
4 x 5	10.00	4 x 5	5.00
5 x 7	11.00	5 x 7	6.00
6½ x 8½	12.00	6½ x 8½	7.00
8 x 10	14.00	8 x 10	8.00

The No. 1 Buster Brown



For Pictures $2\frac{1}{4} \times 2\frac{1}{4}$ inches; adapted
for six exposure Film

Dimensions, $3\frac{1}{8} \times 3\frac{1}{2} \times 4\frac{3}{4}$; weight, 8 ounces.

THIS camera is not a toy. It is accurate and reliable in every respect and was designed with special reference to the wants of boys and girls, and having in mind the requirements of a child full of fun, as represented by the Buster Brown sketches.

It is fitted with a fine quality lens and shutter for both snap-shot and time exposures.

Price

No. 1 Buster Brown	\$1.00
Carrying Case50
Six Exposure Film, $2\frac{1}{4} \times 2\frac{1}{4}$15
Developing and Printing Outfit75

The No. 2 Buster Brown



For Pictures $2\frac{1}{4} \times 3\frac{1}{4}$ inches ; adapted
for six exposure Film.

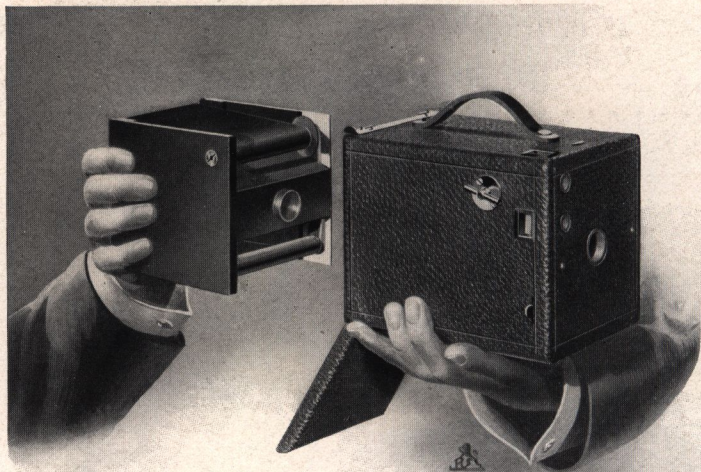
Dimensions, $3\frac{1}{2} \times 4\frac{1}{8} \times 5\frac{1}{2}$ inches ; weight, 11 ounces.

THIS camera is the same as the No. 1 only on a larger scale, for it takes $2\frac{1}{4} \times 3\frac{1}{4}$ inches. It is fitted with a lens, guaranteed to produce good pictures, and a shutter adjusted for both snap-shots and time exposures. It is provided with two finders for horizontal and vertical pictures.

Price

No. 2 Buster Brown	\$2.00
Carrying Case75
Six Exposure Film, $2\frac{1}{4} \times 3\frac{1}{4}$20
Developing and Printing Outfit	1.50

The No. 3 Buster Brown



For Pictures $2\frac{1}{4}$ x $3\frac{1}{4}$ inches ; adapted
for six exposure Films.

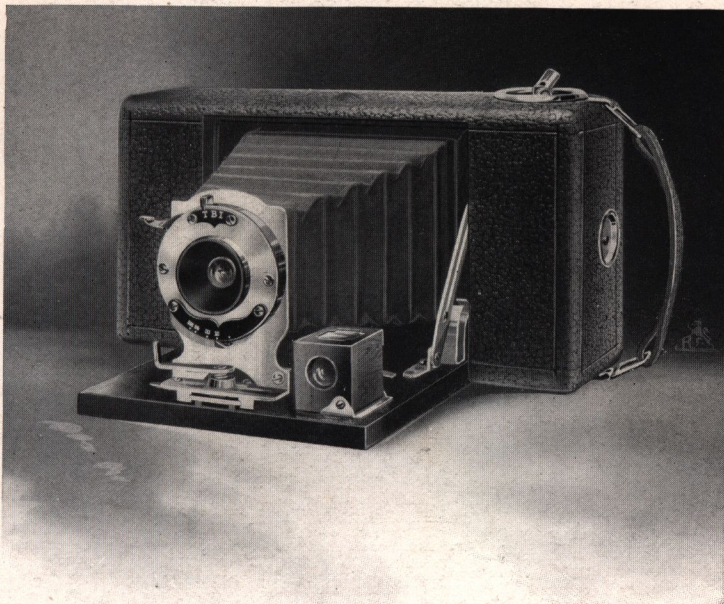
Dimensions $3\frac{1}{2}$ x $4\frac{1}{8}$ x $5\frac{1}{2}$ inches ; weight, 11 ounces.

THIS camera is similar in style, quality and construction to that of the well known and popular No. 1 Ansco box camera. It is fitted with a good working lens and time and instantaneous finger-release shutter. It is also provided with two ground glass finders for horizontal and vertical pictures. The camera speaks for itself. One must see it and examine it to realize how much we give for \$3.50.

Price

No. 3 Buster Brown Camera	\$3.50
Carrying Case75
Six Exposure Film $2\frac{1}{4}$ x $3\frac{1}{4}$20
Printing and Developing Outfit	1.50

No. 1 Folding Buster Brown



For Pictures $2\frac{1}{4}$ x $3\frac{3}{4}$ inches ; adapted
for six exposure Film

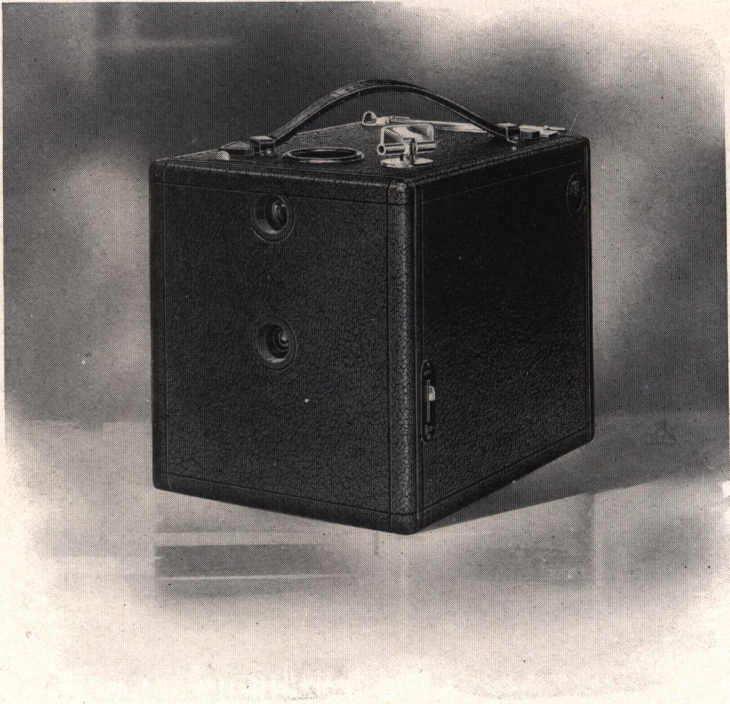
Dimensions, $3\frac{1}{2}$ x $6\frac{3}{4}$ x $1\frac{3}{4}$; weight, 14 ounces.

THIS camera is very compact and is fitted with a fine fixed focus meniscus lens with diaphragm and with a shutter for time and instantaneous exposures. It is also provided with a brilliant finder for horizontal and vertical pictures ; also socket for tripod.

Price

Folding Buster Brown without Lens and Shutter,	\$4.00
Single Achromatic Lens and Shutter for above camera,	2.50
Carrying Case	1.00
Six Exposure Film, $2\frac{1}{4}$ x $3\frac{3}{4}$20
Developing and Printing Outfit	1.50

The No. 1 Ansco



For Pictures $3\frac{1}{2} \times 3\frac{1}{2}$ inches; adapted
for Film of either six or twelve exposures.

Dimensions, $4\frac{3}{4} \times 4\frac{3}{4} \times 5\frac{1}{2}$: weight 19 ounces.

THIS is a high grade camera at a popular price. It is a practical instrument, and one must not be deluded into the belief that because of the exceedingly low price it will not produce good pictures, for we recommend it for snap-shot work. It is always ready, as the Single Achromatic lens with which it is fitted is one of the fixed focus style. The shutter with three diaphragms is arranged to give three degrees of speed as well as time exposures. The camera is provided with a socket for tripod screw. Each camera is complete in itself and has no loose parts to become broken or lost.

It is provided with a brilliant finder of the best quality. It is covered with genuine seal leather and all its parts are nickel-plated. This camera is adapted to the use of the daylight-loading film-cartridge system.

Price

No. 1 Ansco Camera	\$5.00
Carrying Case	1.25
Six Exposure Film, $3\frac{1}{2} \times 3\frac{1}{2}$30
Twelve Exposure Film, $3\frac{1}{2} \times 3\frac{1}{2}$60

The No. 2 Ansco



For Rectangular Pictures $3\frac{1}{4} \times 4\frac{1}{4}$ inches; adapted
for Film of either six or twelve exposures.

Dimensions, $4\frac{3}{4} \times 5\frac{1}{2} \times 6\frac{1}{2}$ inches; weight, 30 ounces.

THE No. 2 Ansco is of the box type of camera. Very compact, and covered with seal grain leather. All its metal fittings are nickel-plated.

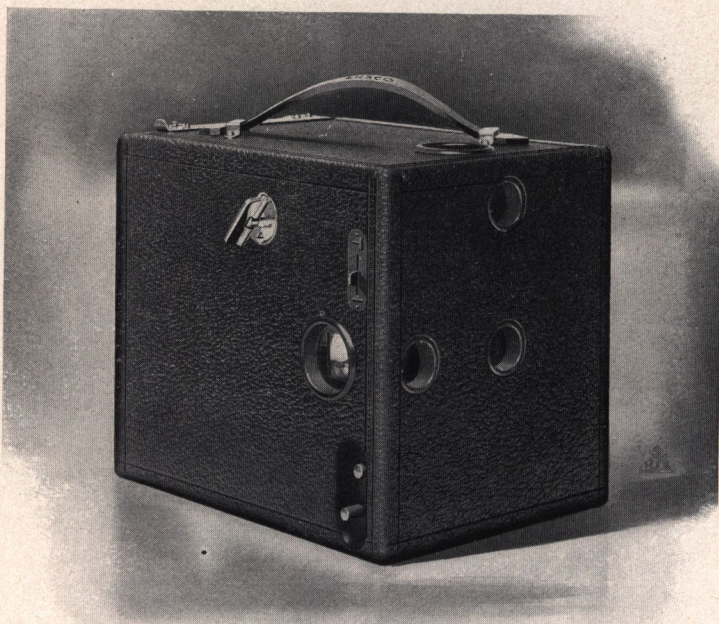
This camera is always ready, as the lens,— which is a high grade Single Achromatic lens, with an improved form of finger-release automatic shutter, for both time and instantaneous exposure,—is of the fixed focus type and needs no focusing. The finder is of the same general character of finders furnished with all the Ansco cameras. It is a brilliant finder which allows the amateur to center the image quickly. The camera has two tripod sockets, so as to make pictures either way of the film.

This camera is adapted for use with the daylight-loading film-cartridge system.

Price

Ansco Camera No. 2	7.25
Carrying Case	1.50
Six Exposure Film, $3\frac{1}{4} \times 4\frac{1}{4}$35
Twelve Exposure Film, $3\frac{1}{4} \times 4\frac{1}{4}$70

The No. 3 Ansco



For Rectangular Pictures, 4 x 5 inches; adapted for Film of either six or twelve exposures

Dimensions, $8\frac{1}{4} \times 6 \times 5\frac{1}{4}$ inches; weight 40 ounces.

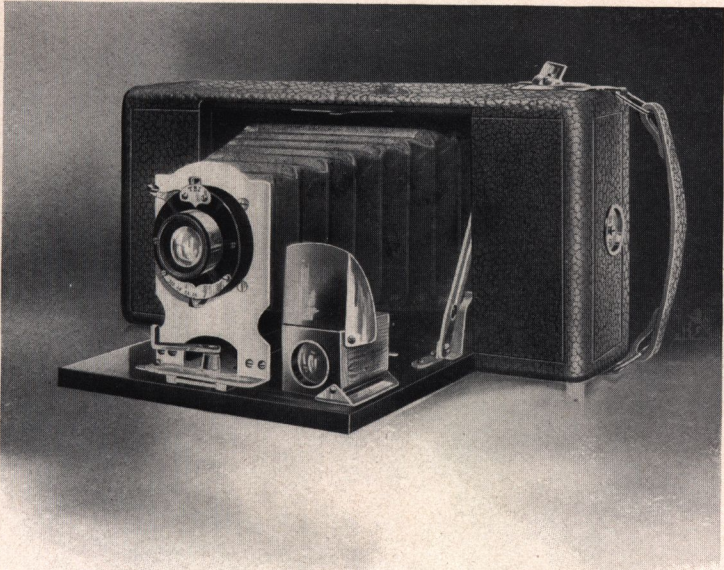
IT is the most compact 4 x 5 camera of the box type on the market. Covered with seal grain leather. Its metal trimmings are nickel-plated, and these include two tripod sockets for vertical and horizontal pictures. It is fitted with a Single Achromatic lens, and an improved form of finger-release automatic shutter, for both time and instantaneous exposures.

The shutter contains a diaphragm with three different size apertures. The lens is of the fixed focus type, so that the camera is always ready to make a picture irrespective of the distance. Provided the subject is six feet or further away, it will take everything sharply.

The brilliant finder with which it is provided for viewing your picture is of the same general nature as that fitted to all the Ansco cameras. The picture is seen quickly, even though the sun should shine directly on it. It is adapted for use with the daylight-loading film system.

Price	\$7.75
Carrying Case	1.50
Six Exposure Film, 4 x 545
Twelve Exposure Film, 4 x 590

The Ansco Junior



For Pictures $2\frac{1}{2} \times 4\frac{1}{4}$ inches

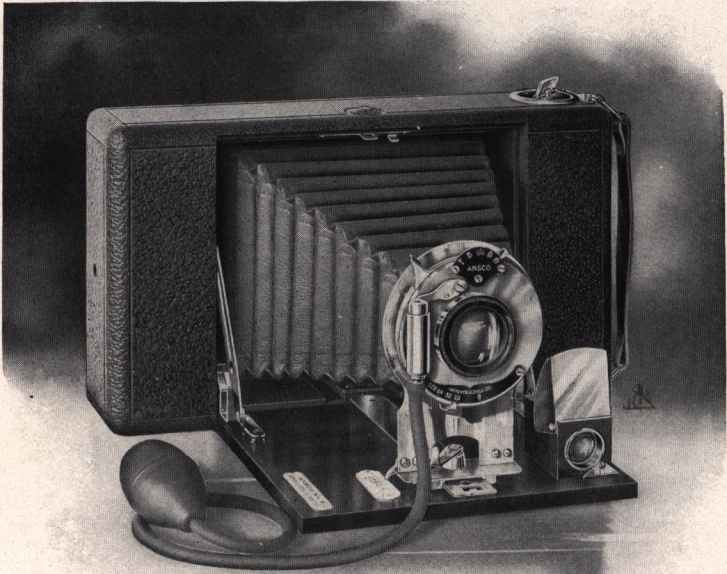
Dimensions, $2 \times 8\frac{1}{4} \times 4\frac{1}{4}$ inches; weight 21 ounces

THIS is a very handsome compact camera, with self locking device for bellows extension, covered with seal grain leather and fitted with a high grade fixed focus Rapid Rectilinear lens with diaphragms, and time, bulb release and instantaneous shutter; also socket for tripod.

Price

The Ansco Junior without Lens and Shutter,	\$7.50
Rapid Rectilinear Lens and Shutter for above camera	4.50
Carrying Case	1.00
Six Exposure Film, $2\frac{1}{2} \times 4\frac{1}{4}$25
Twelve Exposure Film $2\frac{1}{2} \times 4\frac{1}{4}$50
Developing and Printing Outfit	1.50

The No. 4 Folding Pocket Ansco



For Pictures $3\frac{1}{4} \times 4\frac{1}{4}$ inches; adapted
for Film of either six or twelve exposures.

Dimensions $8 \times 4\frac{1}{2} \times 2$ inches; weight, 25 ounces.
Fitted with double Rapid Rectilinear lens and Winner automatic shutter;
focal length of lens, 5 inches.

THE dimensions of this camera and its shape will appeal to tourists for it is designed so that it may be conveniently carried, even in an overcoat pocket; but it is nevertheless a thoroughly durable and reliable instrument; one which will permit the amateur to produce the highest kind of work from a technical standpoint.

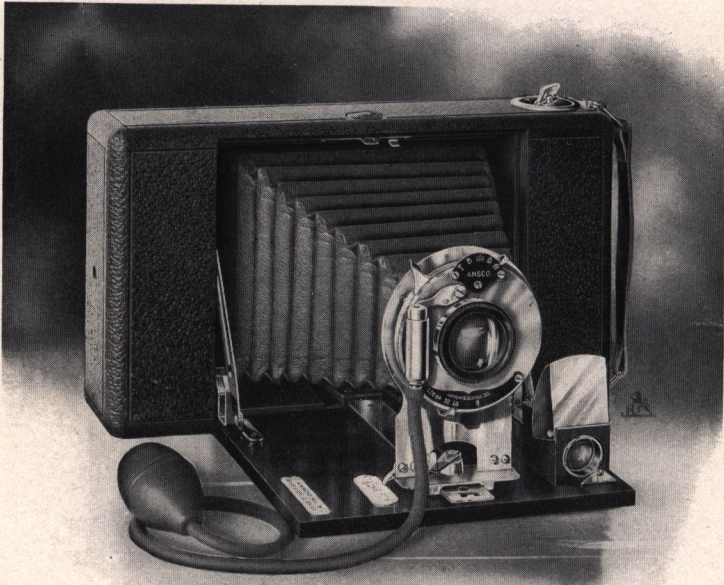
It is made throughout of selected mahogany and the metal parts with the exception of the shutter, are nicked. The camera is covered with fine black seal leather, and is fitted with a Vidil back. The bellows is of maroon leather. The camera is fitted with a brilliant reversible finder and tripod sockets for both horizontal and vertical pictures, in combination with an accurately adjusted focusing scale for the Rapid Rectilinear lens.

An interchangeable back, called the Ansco Dry Plate Attachment, is also furnished separate for this camera, and when so fitted it becomes a most compact, practical and finished dry plate camera.

Price

Ansco No. 4 Folding, $3\frac{1}{4} \times 4\frac{1}{4}$, without Lens and Shutter	\$ 9.50
Rapid Rectilinear Lens with Shutter, for above camera	5.00
No. O. Series III. Goerz Double Anastigmat Lens, New Automatic Shutter, for above camera	45.50
Leather Carrying Case	1.50
Ansco Portrait Attachment50
Ansco Dry Plate Attachment	3.50
Double Dry Plate Holder, $3\frac{1}{4} \times 4\frac{1}{4}$	1.00
Ansco Non-curling Film Cartridge, 12 Exposures, $3\frac{1}{4} \times 4\frac{1}{4}$70
Ansco Non-curling Film Cartridge, 6 " $3\frac{1}{4} \times 4\frac{1}{4}$35
Ansco-Vidil Film Cartridge, 12 Exposures70

The No. 5 Folding Pocket AnSCO



For Pictures 4 x 5 inches ; adapted for
Film of either six or twelve exposures.

Dimensions, 2 x 5½ x 8¾ inches ; weight, 31 ounces.
Fitted with Rapid Rectilinear lens and Winner automatic shutter,
focal length of lens, 5¼ inches.

THE AnSCO No. 5 is the same in every particular as the No. 4, except that it takes a larger size picture, namely 4 x 5.
An interchangeable back called the AnSCO Dry Plate Attachment is also furnished separate for this camera, and when so fitted it becomes a most compact, practical and finished dry plate camera.

Price

AnSCO No. 5 Folding 4 x 5, without Lens and Shutter	\$12.50
Rapid Rectilinear Lens, with Shutter for above camera	6.00
No. 1. Goerz Anastigmat Lens, series III. with New Automatic Shutter for above camera	55.00
Leather Carrying Case	1.50
AnSCO Portrait Attachment50
AnSCO Dry Plate Attachment	3.50
AnSCO Non-curling Film Cartridge, 12 Exposures, 4 x 590
AnSCO " " " " 6 " " 4 x 545
AnSCO-Vidil Film Cartridge, 10 Exposures, 4 x 590

The No. 6 Folding Pocket Ansco



For Pictures $3\frac{1}{4} \times 4\frac{1}{4}$ inches ; adapted
for Film of either six or twelve exposures.

Dimensions $2 \times 4\frac{1}{2} \times 8$ inches ; weight 25 ounces.

THIS camera is designed for those who are taking up photography with the ambition to produce the most exacting work and for those who are proud to possess a camera of the highest quality and finish throughout.

It is made of selected mahogany and is highly polished. The metal parts, with the exception of the shutter, are nickered, and the camera is covered with black seal grain leather.

It is provided with rack and pinion movement, for focusing with great precision. It has a rising front to include more of the foreground or more of the sky, as the composition of the picture might require ; and also for taking high buildings. For similar purposes it has a lateral shifting front.

The Ansco cameras No. 6 and 7 are fitted with the highest grade lenses that can be produced at a popular price. Their quality, considering their price in comparison with those of special high-grade lenses, is indeed very high, and it is possible to make them of such a high quality at a disproportionately lower cost, owing to the fact that they are made in very large quantities, which is not the case with the so-called high grade expensive lenses. In fact, the lenses fitted to our Folding Ansco cameras from No. 4 up, have a covering capacity designated as F 8. They will make snap-shots in sunlight in $\frac{1}{125}$ part of a second, and with the shutter working at $\frac{1}{60}$ of a second will make satisfactory negatives on hazy days.

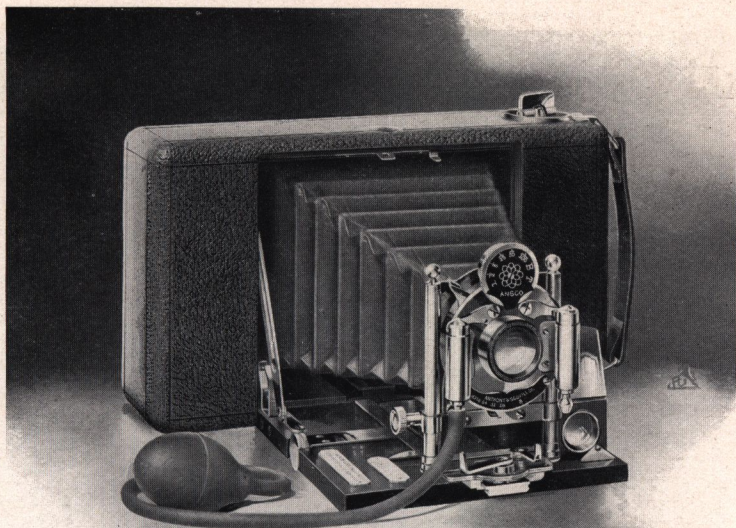
A No. 6 Ansco is provided with a Vidil focusing back, and has a reversible finder and tripod socket for both horizontal and vertical pictures, and an accurately adjusted focusing scale for the Rapid Rectilinear lens.

An interchangeable back called the Ansco Dry Plate Attachment is also furnished separate for this camera, and when so fitted it becomes a most compact, practical and finished dry plate camera.

Price

Ansco No. 6 Folding $3\frac{1}{4} \times 4\frac{1}{4}$ Camera, without Lens and Shutter	\$11.00	Ansco Dry Plate Attachment	\$3.50
Rapid Rectilinear Lens and Shutter for above camera	9.00	Double Dry Plate Holder. $3\frac{1}{4} \times 4\frac{1}{4}$	1.00
No. O. Goerz Anastigmat Lens with New Automatic Shutter, for above camera	45.50	Ansco Non-curling Film Cartridge, 12 Exposures, $3\frac{1}{4} \times 4\frac{1}{4}$70
Leather Carrying Case	1.50	Ansco Non-curling Film Cartridge, 6 Exposures, $3\frac{1}{4} \times 4\frac{1}{4}$35
Ansco Portrait Attachment50	Ansco-Vidil Film Cartridge, 12 Ex- posures, $3\frac{1}{4} \times 4\frac{1}{4}$70

The No. 7 Folding Pocket Ansco



For Pictures 4 x 5 inches; adapted
for Film of either six or twelve exposures.

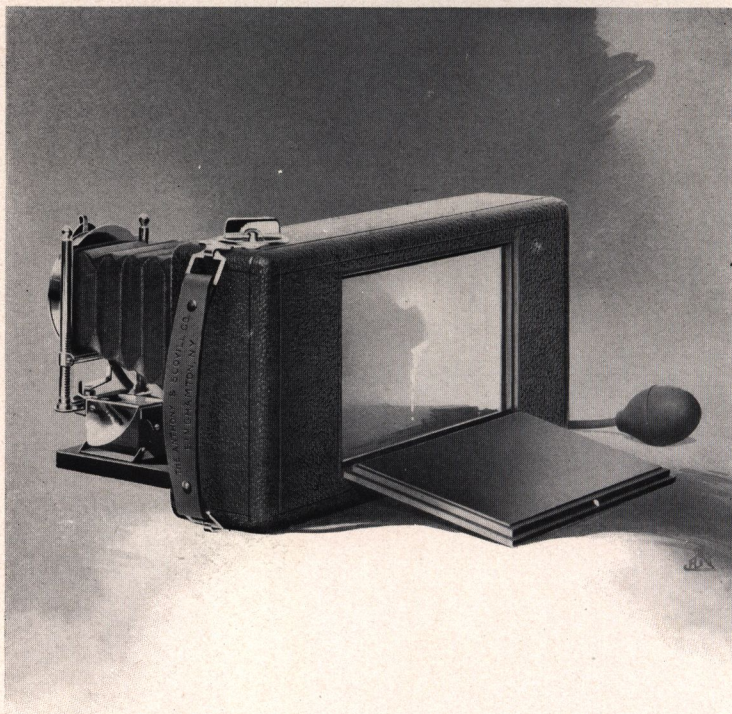
Dimensions 2 x 5½ x 8¾ inches; weight, 31 ounces.

THIS camera is exactly the same as the No. 6, except that it takes a 4 x 5 picture. In other words it bears to the No. 6 the same relation as the No. 5 does to the No. 4. It is the same camera on a larger scale.

Price

Ansco No. 7 Folding 4 x 5 Camera without Lens and Shutter	\$15.00	Ansco Portrait Attachment50
Rapid Rectilinear Lens with Shutter for above camera	10.50	Ansco Dry Plate Holder, 4 x 5	1.00
No. 1 Series III. Goerz Anastigmat Lens with New Automatic Shutter for the above camera	55.00	Ansco Non-curling Film Cartridge, 12 Exposures, 4 x 590
Leather Carrying Case	1.50	Ansco Non-curling Film Cartridge, 6 Exposures, 4 x 545
Ansco Dry Plate Attachment	3.50	Ansco-Vidil Film Cartridge, 10 ex- posures, 4 x 590

The No. 9 Folding Pocket Ansco



For Pictures $3\frac{3}{4} \times 5\frac{1}{2}$; adapted
for Films of either six or ten exposures.

Dimensions, $2 \times 4\frac{1}{2} \times 9\frac{1}{2}$ inches; weight 35 ounces,

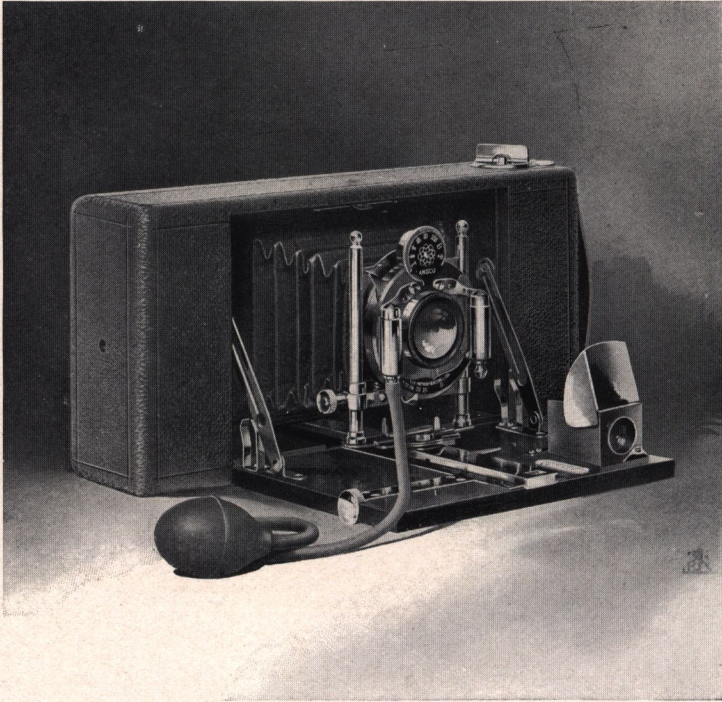
THIS camera represents throughout the highest grade of workmanship, and the size of the picture which it takes, namely: $3\frac{3}{4} \times 5\frac{1}{2}$ inches is a very popular size, for the reason that it allows great scope in photographing landscapes, and permits making beautiful panel portraits, especially when using the Ansco Portrait Attachment. It has a rack and pinion device for focusing. The front has a lateral sliding movement. The same as all the Ansco Folding cameras, it has a Vidil focusing back and also a tripod socket, for both horizontal and vertical pictures. It is fitted with a Rapid Rectilinear lens and single valve Automatic shutter. We furnish for this

camera separately, an interchangeable back called the Ansco Dry Plate Attachment, and when fitted with this back it becomes a most compact, practical and efficient dry plate camera.

Price

AnSCO No. 9 Folding Camera, 3¼ x 5½ without Lens and Shutter . . .	\$14.00	AnSCO Portrait Attachment	\$.50
Rapid Rectilinear Lens and Shutter for above camera	6.00	AnSCO Dry Plate Attachment	3.50
No. 1 Goerz Anastigmat Lens, series III, etc., with New Automatic Shut- ter for above camera	55.00	AnSCO Film Cartridge, 3¼ x 5½, 10 Ex- posures70
Leather Carrying Case	1.50	AnSCO Film Cartridge, 3¼ x 5½, 6 Expo- sures40
		AnSCO Vidil Film Cartridge, 3¼ x 5½, 8 Exposures70

The No. 10 Folding Pocket Ansco



For Pictures $3\frac{1}{4} \times 5\frac{1}{2}$ inches; adapted
for Film of either six or ten exposures.

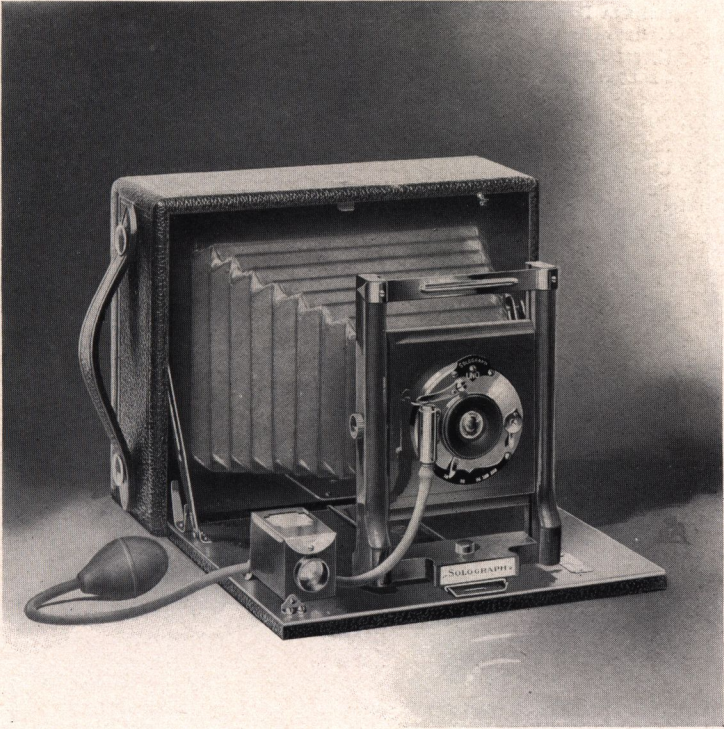
Dimensions, $2 \times 4\frac{1}{2} \times 9\frac{1}{2}$ inches; weight, 35 ounces.

THIS camera as regards style and workmanship, is the same as the No. 9 Ansco, only that it is fitted with a *rapid symmetrical lens and double valve automatic shutter*, and has a clever device for raising and lowering the front. The same as the No. 9 it takes an Ansco Dry Plate Attachment.

Price

Ansco No. 10 Folding, $3\frac{1}{4} \times 5\frac{1}{2}$ Camera, without Lens and Shutter	\$15.00
Rapid Symmetrical Lens and Shutter for above camera	10.50
No. 1 Goerz Anastigmat Lens, series III, etc. for above camera	55.00
Leather Carrying Case	1.50
Ansco Portrait Attachment50
Ansco Dry Plate Attachment	3.50
Ansco Film Cartridge, $3\frac{1}{4} \times 5\frac{1}{2}$, 6 Exposures40
Ansco Film Cartridge, $3\frac{1}{4} \times 5\frac{1}{2}$, 10 Exposures70
Ansco-Vidil Film, $3\frac{1}{4} \times 5\frac{1}{2}$, 8 Exposures70

Solograph Cameras No. 1 and No. 2



THE Solograph cameras have enjoyed for a great many years, the reputation of being the best constructed cameras on the market, and the 1906 models will be found a great improvement on earlier cameras of this name, and the many new features will appeal to the discriminating amateur from every standpoint.

The Solographs No. 1 and No. 2 were designed to meet the requirements of those who are seeking a completely equipped instrument at an extremely low price.

The Solograph No. 1 possesses a Single Achromatic lens, while the Solograph No. 2 is fitted with a double Rapid Rectilinear lens. Both are equipped for Junior shutters already described in this catalogue. A carrying case is supplied with place for the camera in one end and extra plate holders in the other.

The Solographs No. 1 and No. 2 are made in two sizes, 4 x 5 and 5 x 7.

SPECIFICATIONS

DIMENSIONS: { In 4 x 5 size, 6 x 5½ x 2¾ inches.
 { In 5 x 7 size, 8 x 6½ x 2¾ inches.
CAMERA BOX: Mahogany, dovetailed and covered with seal grain leather.
CAMERA BED: Mahogany, polished, fitted with piano hinge.
METAL PARTS: Highly polished brass, lacquered.
BELLOWS Red Russia leather, lined with gossamer cloth.

SPECIAL FEATURES

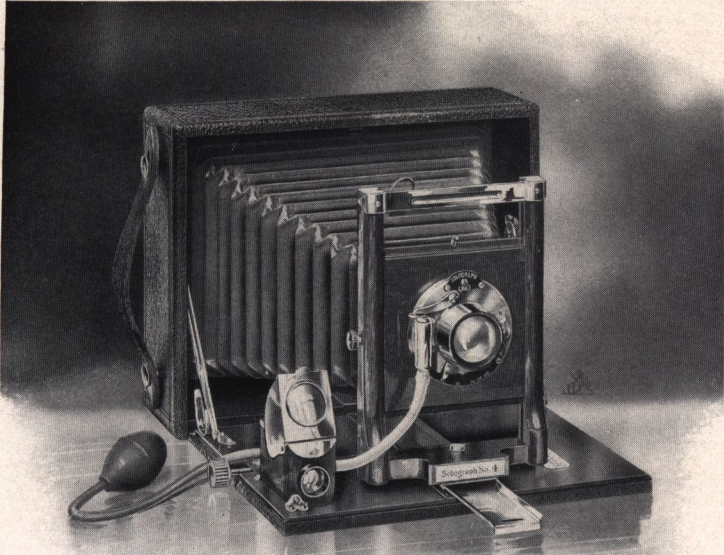
FRONT: Rising and falling. BACK: Spring actuated ground glass panel.
CLAMP: Automatic press-button.
FINDER: Reversible, brass bound.
SHUTTER: Solograph Uno, with bulb and tube attachment.
LENS: { Solograph Single Achromatic, fitted to No. 1.
 { Solograph Rapid Rectilinear, fitted to No. 2.

Camera Carrying Case Double Plate Holder

Prices Complete, No. 1, 4 x 5, \$ 9.00; 5 x 7, \$14.00

“ “ No. 2, 4 x 5, 11.00; 5 x 7, 15.00

Solograph Camera No. 4



THIS is a rack and pinion focusing camera which is a feature insisted upon by careful workers. The camera is made of mahogany, highly polished, covered with selected morocco grain leather. It has a strong actuated ground glass screen, rising and falling front, and is fitted with a Rapid Rectilinear lens with Winner shutter. A handsome carrying case is supplied with place for the camera in one end and extra holders in the other. The Solograph No. 4 is made in two sizes, 4 x 5 and 5 x 7.

SPECIFICATIONS

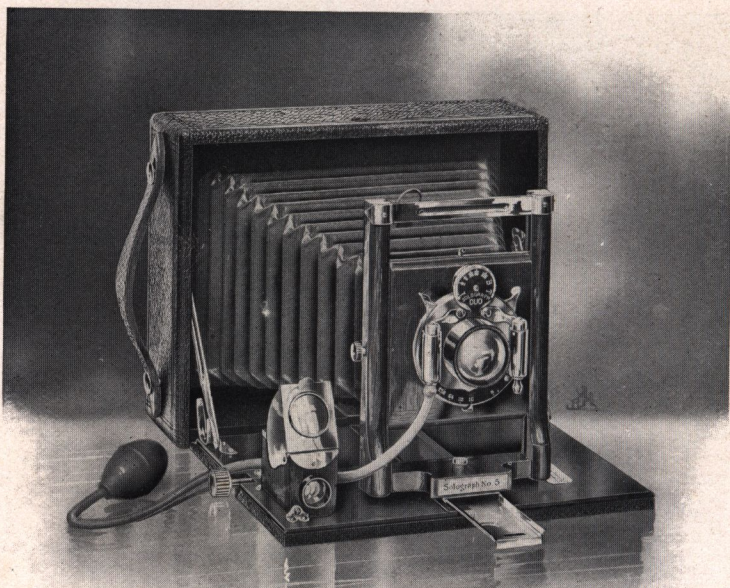
DIMENSIONS: { In 4 x 5 size, 6 x 5 1/4 x 2 3/4 inches.
 { In 5 x 7 size, 8 x 6 1/4 x 2 3/4 inches.
 CAMERA BOX: Mahogany, dovetailed and covered with seal grain leather.
 CAMERA BED: Mahogany, polished, fitted with piano hinge.
 METAL PARTS: Highly polished brass, lacquered.
 BELLOWS: Red Russia leather, lined with gossamer cloth.

SPECIAL FEATURES

FRONT: Rising and falling. BACK: Spring actuated ground glass panel.
 CLAMP: Automatic press-button.
 RACK AND PINION: For focusing.
 FINDER: Reversible, brass bound, hooded.
 SHUTTER: Solograph Uno, with bulb and tube attachment.
 LENS: Solograph Rapid Rectilinear.
 Camera Carrying Case Double Plate Holder

Prices Complete 4 x 5, \$14.00; 5 x 7, \$19.00

Solograph Camera No. 5



THE Solograph No. 5 is the same in all essential features as the No. 4, only that it is equipped with the well known Automatic shutter and the best grade of Rapid Rectilinear lens. The camera is made in two sizes, 4 x 5 and 5 x 7.

The price includes a handsome carrying case with place to hold the camera in one end and extra plate holders in the other.

SPECIFICATIONS

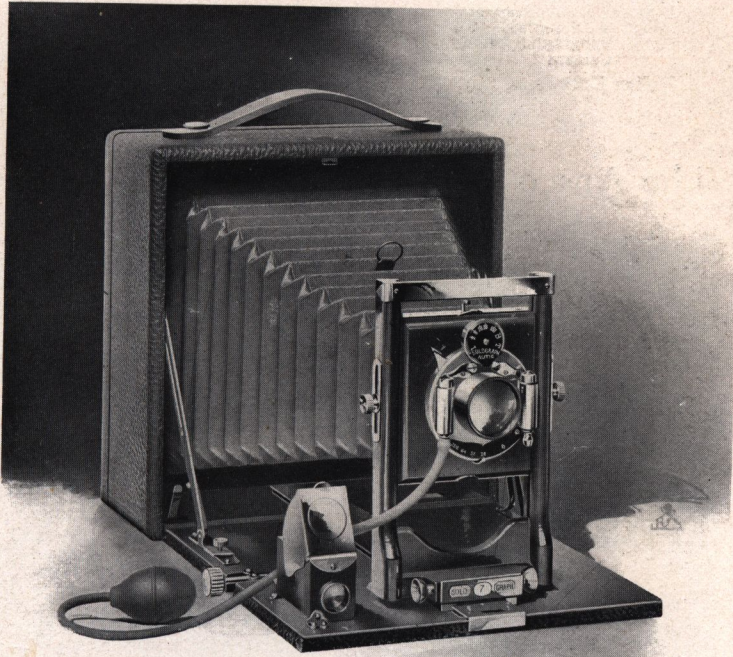
DIMENSIONS: { In 4 x 5 size, 6 x 5 $\frac{1}{2}$ x 2 $\frac{3}{8}$ inches.
 { In 5 x 7 size, 8 x 6 $\frac{1}{2}$ x 2 $\frac{3}{8}$ inches.
CAMERA BOX : Mahogany, dovetailed and covered with seal grain leather.
CAMERA BED : Mahogany, polished, fitted with piano hinge.
METAL PARTS : Highly polished brass, lacquered.
BELLOWS : Red Russia leather, lined with gossamer cloth.

SPECIAL FEATURES

FRONT : Rising and falling. BACK : Spring actuated ground glass panel.
CLAMP : Automatic press-button.
RACK AND PINION : For focusing.
FINDER : Reversible, brass bound and hooded.
SHUTTER : Solograph Duo, with bulb and tube attachment.
LENS : Solograph Rapid Rectilinear.
Camera Carrying Case Double Plate Holder

Prices Complete 4 x 5, \$16.00; 5 x 7, \$21.00

Solograph Camera No. 7



THOSE amateurs who make a special feature of portraiture will appreciate the construction of the Solograph No. 7, for it is provided with a screen back, rising and falling front, hooded reversible finder, also rack and pinion for fine focusing, all of which are desirable devices for portrait taking.

The lens fitted to this camera is a Symmetrical lens which is of a higher grade than the Rapid Rectilinear. This camera is made in two sizes, 4 x 5 and 5 x 7.

SPECIFICATIONS

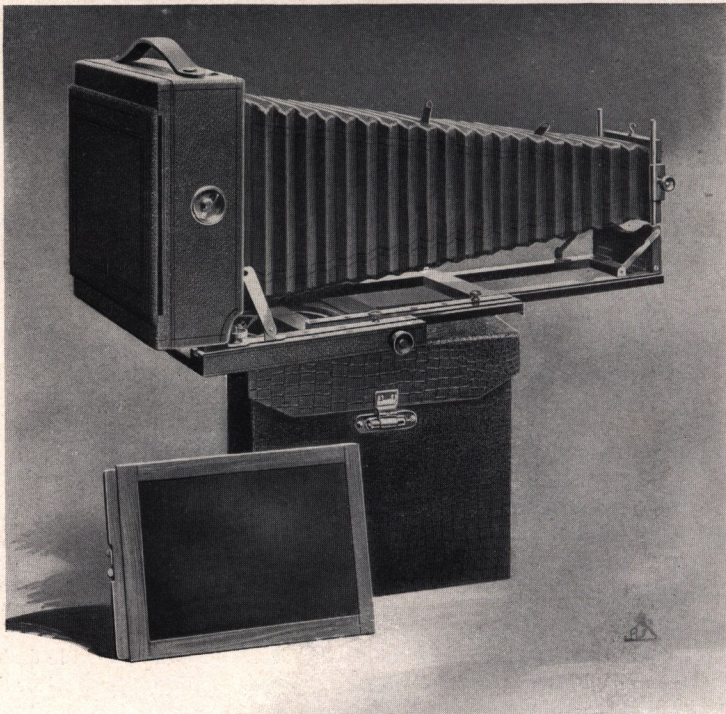
DIMENSIONS: { In 4 x 5 size, 6 x 6 x 3 inches.
 { In 5 x 7 size, 8½ x 8½ x 3 inches.
CAMERA BOX: Mahogany, dovetailed and covered with seal grain leather.
CAMERA BED: Mahogany, polished, fitted with piano hinge.
METAL PARTS: Highly polished brass, lacquered.
BELLOWS: Red Russia leather, lined with gossamer cloth.

SPECIAL FEATURES

FRONT : Rising and falling. RACK AND PINION : For focusing.
CLAMP : Automatic press-button. SWING : Either back or bed.
BACK : Reversible, with single release, spring actuated ground glass panel.
FINDER : Brilliant, reversible, brass bound and hooded.
SHUTTER : Solograph with bulb and tube attachment.
LENS : Solograph Symmetrical.
Camera Carrying Case Double Plate Holder

Prices Complete 4 x 5, \$22.00; 5 x 7, \$29.00

The Ansco Compact Dry Plate Camera



SMALL hand cameras such as represented by the line of Ansco cameras up to 4 x 5 will be found to meet nearly all the requirements of the amateur photographer. When a larger picture is thought desirable, a Bromide enlargement adds sometimes to the artistic quality of the picture, but there are cases where a larger camera may be a necessity, especially when the pictures are needed for reproduction—that is, for illustration purposes. A reduction from a larger negative will make the best half-tone engraving. In other words, for general commercial work, a special type of camera is needed.

To meet the requirements of the advanced photographer and for use with lenses of more than one focus, we have designed the Compact camera. As its name indicates, it is exceedingly compact, and this advantage of compactness and portability is secured by a new design rather than by any sacrifice of rigidity and strength.

The Compact camera is provided with a swing back on the latest improved lines, easily operated by set screws outside the camera. It can be adjusted to any angle instantly.

This camera is of the long focus type and has a reversible back of a new design, which when once in position is locked securely. The bellows is of triple extension. The bellows racks out by means of a double track-bed, reinforced with metal, which assures absolute rigidity when using the camera fully extended.

The rack and pinion is adjusted with a great degree of accuracy for fine focusing.

It is made of solid mahogany throughout, dovetailed, highly polished and covered with seal grain leather and has a reinforced handle.

All the metal parts except the tripod top are made of brass, polished and lacquered. The tripod top is heavily nicked. The bellows is made of red Russia leather.

SPECIFICATIONS :

MEASUREMENTS.		CAMERA EXTENSION.	
5 x 7	3" x 8¼" x 8¼"	5 x 7	20½ inches
6½ x 8½	3½ x 10¼ x 10¼	6½ x 8½	25 inches
8 x 10	3½ x 11¼ x 11¼	8 x 10	29 inches

MEASUREMENTS OF FRONT BOARD

5 x 7	2½ x 2½	Extra Front Boards; each \$.25
6½ x 8½	3½ x 3½	" " " "40
8 x 10	4½ x 4½	" " " "40

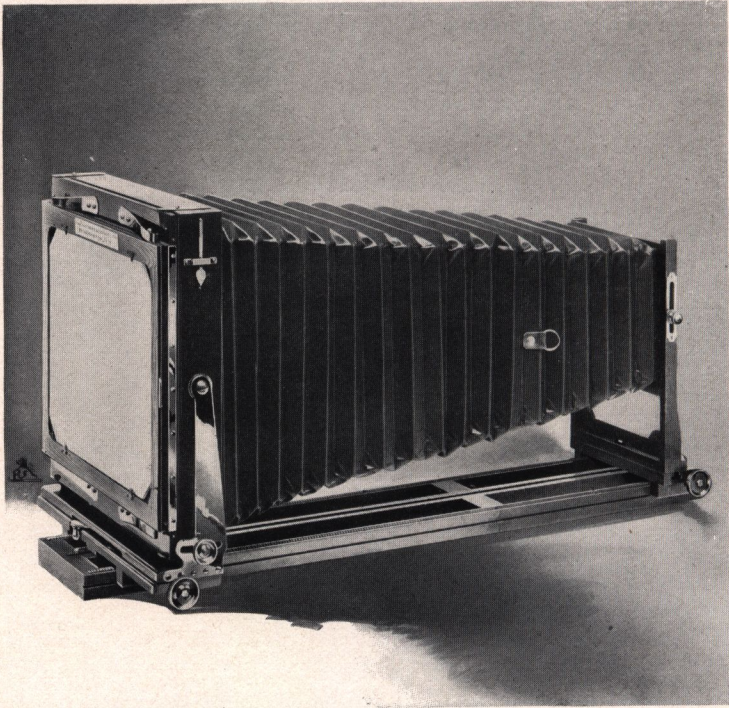
PRICE OF EXTRA BELLOWS

5 x 7	\$4.25
6½ x 8½	5.50
8 x 10	6.00

CAMERA, WITHOUT LENS OR SHUTTER

PRICE	
5 x 7 \$28.00
6½ x 8½ 34.00
8 x 10 38.00

The Clifton Long Focus Camera



TRIPOD field cameras were at one time used exclusively both by the amateur and commercial professional photographer. A camera of this type intended exclusively for the amateur, differed but slightly from that designed for the photographer doing professional work on professional lines; but hand cameras have entirely superseded the field tripod camera for the amateur's use. The commercial photographers and amateurs, however, doing large direct work for the purpose already outlined in description of the Ansco Compact camera, must still cling to this type of instrument, and to meet that demand we designed the Clifton camera, which combines all the good features of the discarded field tripod camera made for the amateur

This camera is compact, rigid and simple in its mechanism. Every part is held in place by the best device that experience furnishes. It has a front and back focus, the latter making possible the use of extreme wide angle lenses. It has a double swing back, double swing front, reversible back, sliding and rising front, spring actuated ground glass, and the front board is of a

relatively large size, which makes it possible for the camera to be fitted with almost any special lens, provided it is not a portrait lens of the old type, with a large and heavy barrel.

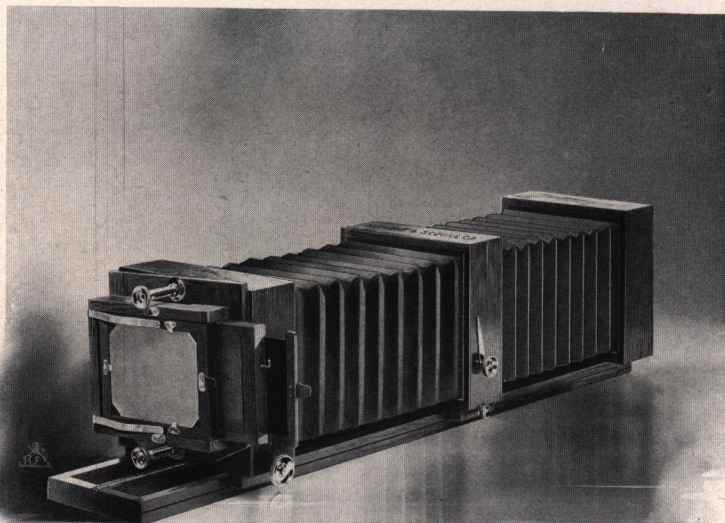
This camera is handsome in appearance; constructed of the very best material and is fitted with a Zephyr holder, which is the most practical holder made in this country. One of the particularly desirable features of the Zephyr holder is the fact that it opens at one end to allow the plate or plates to slide in or out.

This camera is provided with double extension leather bellows, for use with telephoto lenses, and also to be used when the back combination of the lens is employed, so as to magnify distant views. For the convenience of carrying and preserving this camera, it is sold with a well made and substantial canvas carrying case.

SPECIFICATIONS:

MEASUREMENTS WHEN CLOSED		SIZE OF FRONT BOARD		
6½ x 8½	5½ x 12¼ x 10¾	6 ½ x 8½	5 x 5 \$.40
8 x 10	5½ x 13¾ x 12	8 x 10	5 x 540
11 x 14	6¾ x 16¾ x 18¾	11 x 14	70
14 x 17	7¾ x 21¾ x 20¾	14 x 17	70
BELLOWS WHEN EXTENDED		EXTRA BELLOWS		
6½ x 8½	24 inches	6½ x 8½	 \$5.50
8 x 10	25 "	8 x 10	 6.00
11 x 14	30¾ "	11 x 14	 7.50
14 x 17	37 "	14 x 17	 8.50
PRICE OF CAMERAS WITHOUT LENS				
5 x 7			 \$24.00
6½ x 8½			 28.00
8 x 10			 34.00
11 x 14			 48.00
14 x 17			 60.00

Anthony's Lantern Slide Camera



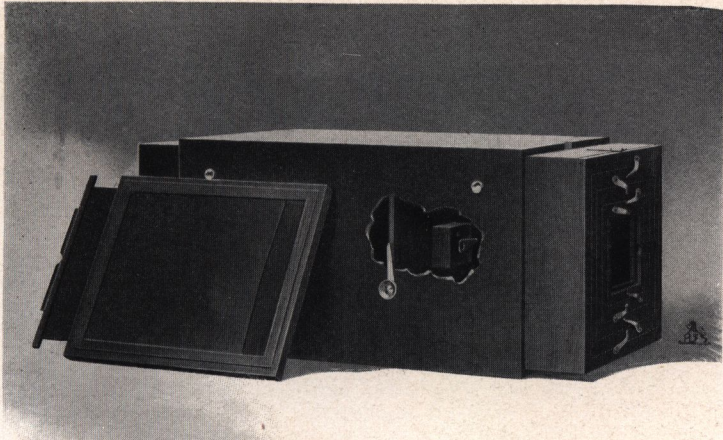
FOR copying 4 x 5 negatives, or smaller, on $3\frac{1}{4}$ x 4 or $3\frac{1}{4}$ x $4\frac{1}{4}$ plates for use in the lantern. This camera, made with special reference to transparency work, is provided with an oscillating frame carriage for ground glass and plate holder, to facilitate the adjustment of picture on plate.

It is well made, light, and simple of construction, and unsurpassed for excellence and convenience.

An important feature in this camera, found in no other, is, that the centre-board with lens can be used in the end of the camera, converting it at once into an extra long copying camera. This will be found very advantageous in enlarging small pictures by one operation.

Price \$15.00
Extra Holder 1.50

The Brighton Enlarging and Copying Camera for Plates or Paper



THIS camera will copy or enlarge negatives up to 8 x 10 and will also make bromide enlargements up to 8 x 10. It consists of two boxes within an outer case, both of which may be drawn out to meet the desired focus.

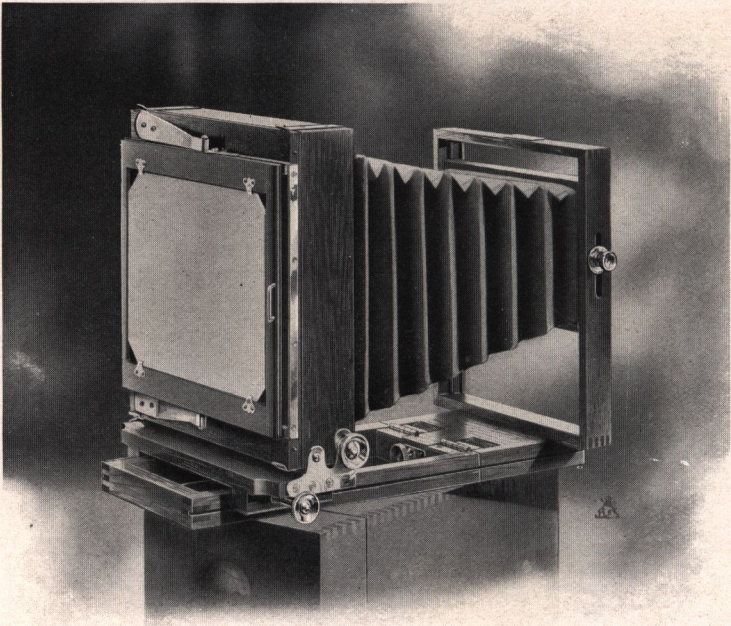
The price includes lens and shutter; the shutter operating from the outside of the camera. The front of camera has a nest of kits from 4 x 5 up to 8 x 10, but in enlarging no larger negative than 4 x 5 should be used.

To copy, draw out the front box, which leaves a copying camera, and focus with the rear box.

This camera sells for such a low price that no amateur should be without it. Every good negative is worth enlarging.

Price Complete \$13.50

The N. P. A. Camera



THIS is intended for the same work as specified for the Clifton camera, but designed so as to sell at an exceedingly low price. Nevertheless it is a well made camera of seasoned mahogany, provided with a reversible and patent swing back, rising front, and folding bed. The price includes an extra front or lens board. It is highly polished and is fitted with nicked trimmings.

The price includes, one Zephyr double dry plate holder and a carrying case..

SPECIFICATIONS :

Weight of Camera	5 x 7. 3 lbs.;	6½ x 8½, 5 lbs.
" "	8 x 10, 7 lbs.	
Size of Front Board	5 x 7, 3¼ x 5¼ in.;	6½ x 8½, 5 x 5 in.
" "	8 x 10, 5 x 5 in.	
Camera Extension	5 x 7, 12 in.;	6½ x 8½, 14 in.
" "	8 x 10, 20 in.	
	<i>Price</i>	
5 x 7.	\$9.50	6½ x 8½ \$13.50
		8 x 10 \$18.50

Price

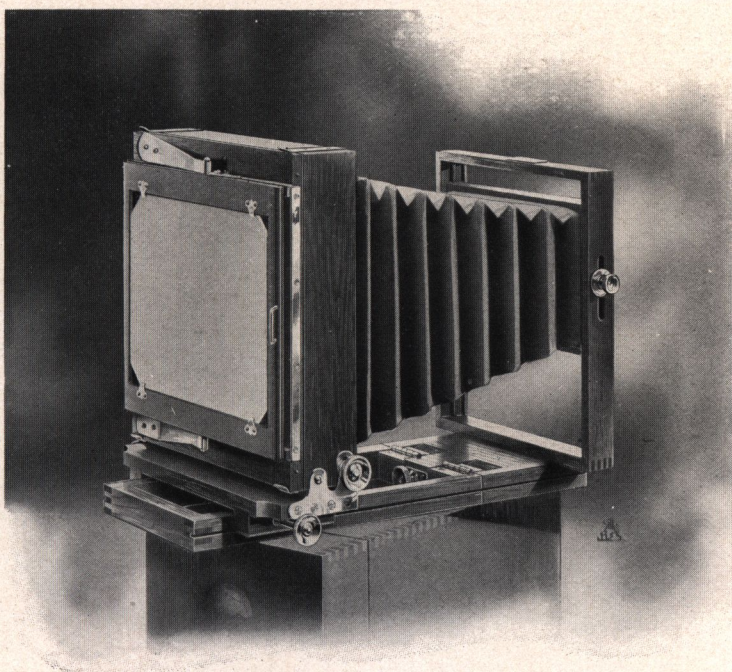
EXTRA FRONT BOARDS

5 x 7	\$.25
6½ x 8½40
8 x 1040

EXTRA BELLOWS

5 x 7	\$2.50
6½ x 8½	3.50
8 x 10	4.50

Champion Equipment



THE camera included in this equipment is of mahogany, with fine varnish finish and lacquered brass trimmings, and is provided with reversible back, folding bed, rising front and swing back. In addition to the above camera, the equipment includes one patent Zephyr double dry plate holder, carrying case, fine Single Achromatic lens and Ansco Junior tripod.

Size of View. Inches.	Camera Extension.	Price.
5 x 7	12 in.	\$11.00
6½ x 8½	14 in.	15.00
8 x 10	20 in.	20.00

A pair of stereo lenses, mounted on extra front board, with shutter and partition for any size of above camera \$7.50

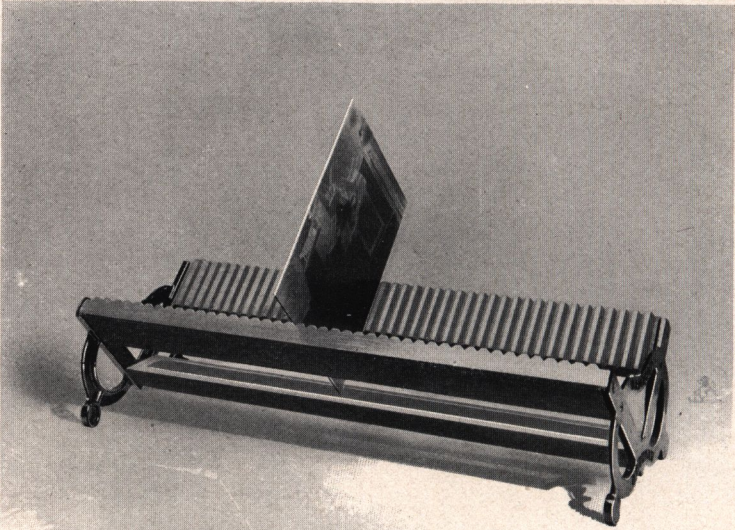
SIZE OF FRONT BOARD

5 x 7	3¼ x 5¼ in.	\$.25 each
6½ x 8½	5 x 5 "	.40 "
8 x 10	5 x 5 "	.40 "

PRICE OF EXTRA BELLOWS

5 x 7	\$2.50
6½ x 8½	3.50
8 x 10	4.50

Negative Racks



BRIGHTON NEGATIVE RACK

THIS is a strong well built rack and one which is used by professionals. It holds 42 negatives, and has a trough running the length of the rack to receive the drippings from the negatives. It will take from the smallest to the largest size negative that is made.

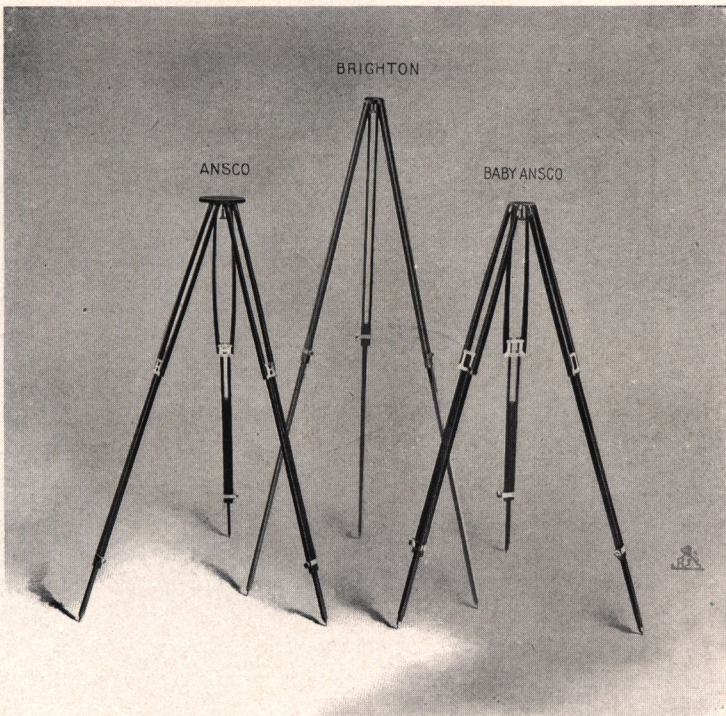
Price \$1.25

COLUMBIAN RACK

This rack is adjustable for different sizes, and it folds flat when not in use.

Price \$.25

Tripods



No. 1 ANSCO TRIPOD

THIS tripod is of very solid construction and is intended to take a camera as large as 11 x 14. It is made of ash, white shellac finish, metal shoe, level with the wood, with top 8 inches in diameter, with ears screwed on underneath with lock arrangement so as to render it impossible for the legs to become detached accidentally. The top is covered with green baize.

Price \$5.00

ANSKO TRIPOD

It is finely polished and perfectly rigid; and combines the advantages of both the folding and telescopic style of tripod. It is very compact. It can be carried in a gripsack. It is made of ash, in white shellac, with brass trimmings. It has patented lock underneath the top which makes it impossible for the legs to become detached accidentally. It has a 4¼ inch wooden top covered with green baize. Intended for 8 x 10 camera and smaller.

Price \$3.00

Tripods—Continued

ANSCO JUNIOR TRIPOD

The same as the preceding Ansco tripods, but lighter and intended for use with cameras of small sizes only. It is light, compact and rigid.

Price \$2.75

THE BABY ANSCO TRIPOD

Is similar to the Ansco Junior, but of still lighter weight. It has one sliding and one folding joint, and is specially adapted for small hand camera work.

Price \$2.00

THE BRIGHTON TRIPOD

This is a very practical and efficient tripod, manufactured from selected stock and finished in plain nickel. It is light, strong and inexpensive, and well adapted for use with small hand cameras.

Price \$1.00

JOINTED TRIPODS FOR HEAVY CAMERAS

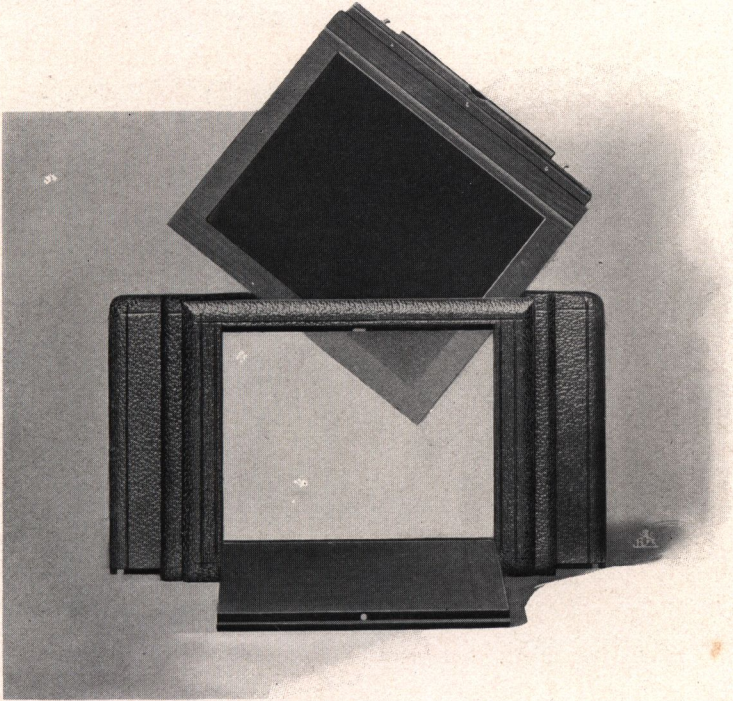
No. 1. Anthony's Improved Folding Tripod, with yellow shellac finish and nickel trimmings, 5 inch circular top, cloth covered \$2.25

No. 2. Anthony's Improved Folding Tripod, same as above, with 8 inch top \$2.25

No. 4. Telescopic Legs, 6 inch top, fine finish and nickel trimmings, adapted to 6½ x 8½ and 8 x 10 sizes \$3.50

No. 5 Telescopic Legs, same as above, with 6 inch top but heavier, adapted to 11 x 14 size \$3.75

AnSCO Dry Plate Attachment

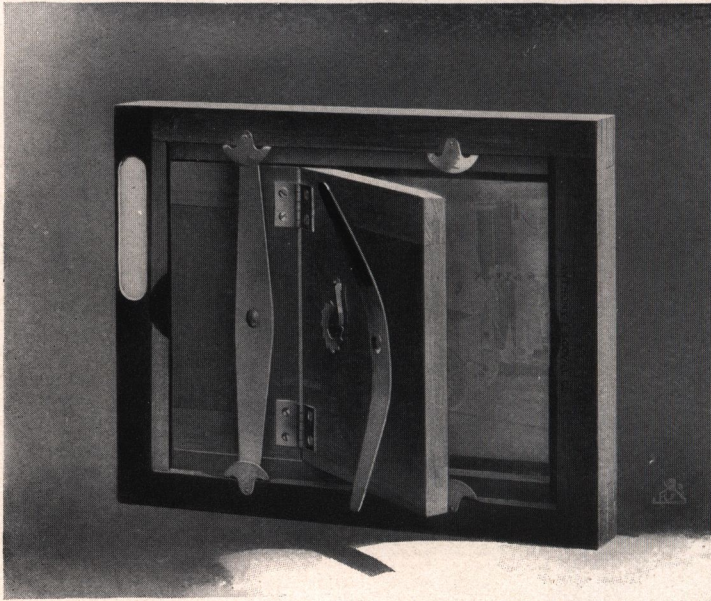


WE supply this attachment, or rather interchangeable back, for those who desire to use dry plates instead of films in the AnSCO cameras No. 4, 5, 6, 7, 9 and 10.

When the AnSCO Dry Plate Attachment is substituted for the film back, the AnSCO camera does not vary in appearance. It remains the same only that it then takes a *double* dry plate holder. It is not, therefore, a makeshift, as heretofore sold by other manufacturers. It is a simple metamorphosis. An AnSCO fitted with this attachment becomes the most compact, practical and efficient dry plate camera on the market.

Price complete \$3.50
Extra Plate Holder 1.25

The Anthony Patent Improved Printing Frames



THIS Printing Frame is made of the best seasoned cherry and the springs are of the best tempered brass riveted to the back. The quality of the spring in a printing frame is of the greatest importance in securing perfect contact. These frames are provided with a washer under the spring, which saves wear and makes it easier to open the printing frame. A tongue and groove in the back where the two parts hinge prevent the possibility of light reaching the print from the rear. The frames are provided with a celluloid tablet for recording memoranda.

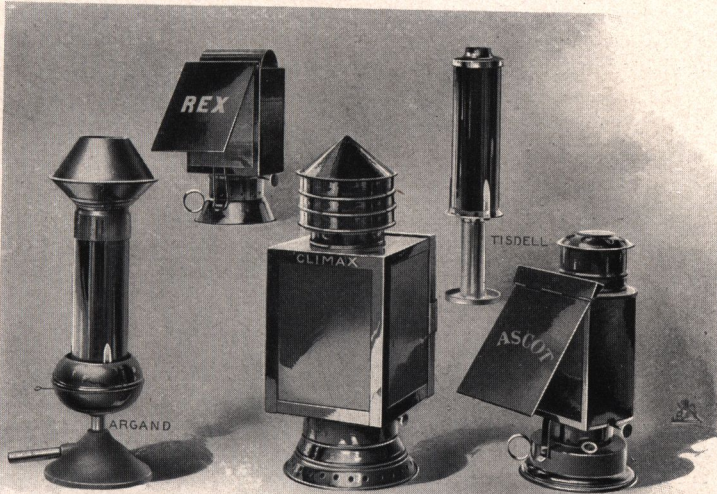
Size.	Flat.	Deep
3¼ x 4¼	\$.36	
4 x 538	
4¼ x 5½40	
4¼ x 6½42	
4¾ x 6½50	
5 x 750	
5 x 852	
6½ x 8½60	\$1.20
8 x 1075	1.40
11 x 14	1.80	2.40

THE ANTHONY AMATEUR PRINTING FRAMES

These printing frames are made of light construction, and are manufactured in amateur sizes only, as follows:—

Size	
4 x 5	\$.25
5 x 730

Dark-Room Lamps



ARGAND GAS BURNER WITH RUBY CHIMNEY

THIS burner may be attached to any ordinary gas bracket. It is made so that it intercepts the downward radiation of light with protection at the top of the same kind as provided with the oil lamps. The chimney is not made of the ordinary ruby glass, but of what is known as copper-flashed.

Price of the Ruby Gas Burner and Chimney \$2.50
 Extra Ruby Chimneys30

These burners are also manufactured with metal stands, with a connection for rubber hose, by which they may be used at any distance from the gas bracket.

Price of Stand \$.50

ANTHONY'S CLIMAX DARK-ROOM LANTERN

This is the best lantern of its price and kind to be found. It has three large illuminating surfaces and reflector. The glass is of the correct non-actinic hue.

Price \$2.00

Dark Room Lamps—Continued

THE TISELL CANDLE RUBY LIGHT

Lighted by one-half of a common sperm candle. It is the most compact and easily carried developing lamp on the market. It is neatly contained in a tube shaped metal case.

Price complete \$1.00
 Extra Ruby Chimneys (each)30

THE LITTLE GIANT CANDLE LANTERN

This lantern is light and for its exceeding low price cannot be equalled, and is well adapted for the requirements of the amateur. Its construction is simple. The light is brilliant and steady and the lantern can be packed and carried without fear of soiling by the leakage of grease or oil.

Price \$.30
 Extra Light (each)02

THE ASCOT LAMP

This lamp is provided with both orange and ruby glass, 4 x 5 inches in size, which slide in separate grooves. The light is therefore absolutely safe. It burns kerosene oil. The wick is controlled from the outside, and as the back of the lamp is semi-circular, it acts as a reflector. All seams are lapped. It is enameled in black and is provided with a detachable oil receptacle.

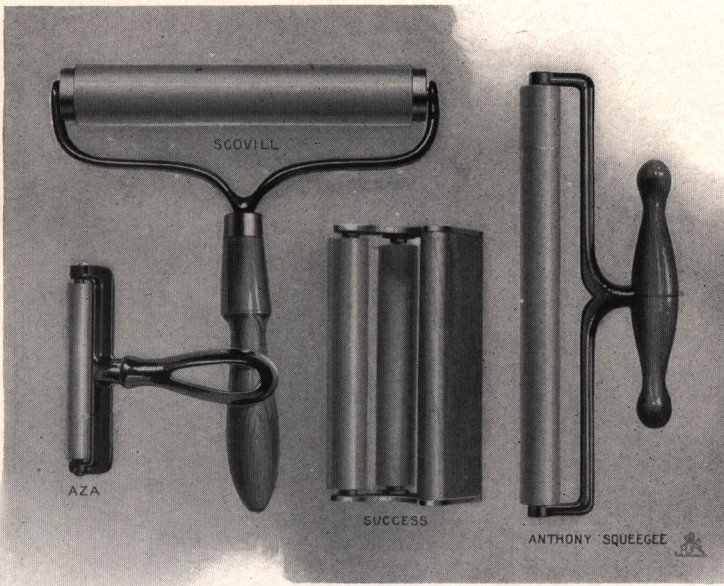
Price \$.75

REX LAMP

Is a compact ruby lantern, burning kerosene oil. The wick is controlled by an exterior thumb screw. It is fitted with a detachable tank for oil, and the ruby glass measures $2\frac{7}{8}$ x 4 inches.

Price \$.50

Print Mounters



ANTHONY'S SQUEEGEE ROLLER

Consists of a single roller, made of finest velvet rubber fastened to a single handle. When in use for mounting, the handle is set at right angles to the roller, for packing, it is laid parallel to the roller.

Price, 6 inch	\$.75
" 9 "	1.00

THE SUCCESS PRINT MOUNTER

The accompanying illustration describes it fully.

Price, 6 inch	\$.60
" 9 "80
" 12 "	1.00

THE AZA PRINT MOUNTER

A strong, light and inexpensive mOUNTER

Price,	\$.20
------------------	--------

SQUEEGEES. (Velvet Rubber)

For squeegeeing prints on glass or ferrotype plates.

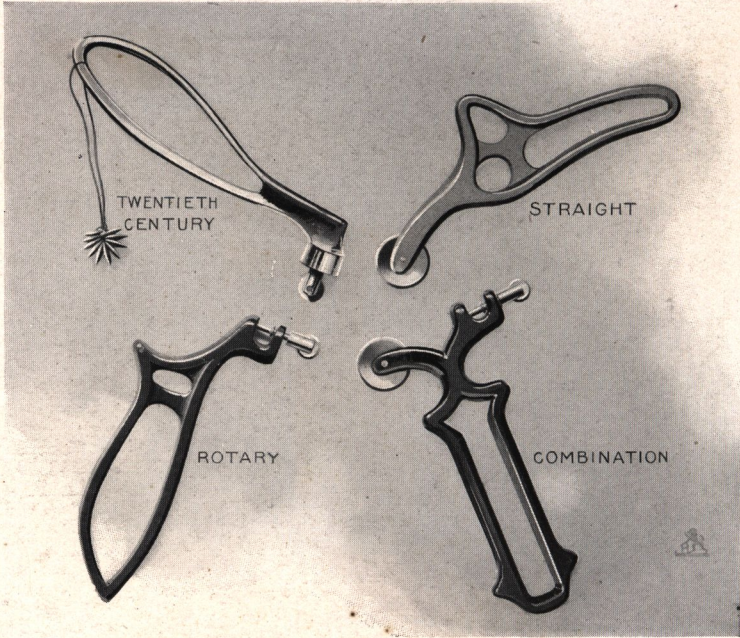
Price, 6 inch	\$.25
" 8 "40
" 12 "50

THE A. & S SQUEEGEE ROLLER

(Superior to anything in the market)

No 1. 8 inch	\$1.00
No 2 12 "	1.50

Trimmers



THE TWENTIETH CENTURY BALL-BEARING TRIMMER

THE wheels are made of tool steel nicely tempered and sharpened. The swivel being set in hardened steel bearing, reduces friction to a minimum and insures a very free running tool. The wheels are easily changed when desired, by simply removing the screw in the swivel shank.

Price with 6 Wheels \$1.50
 Sets of Wheels (large or small)50

STRAIGHT AND ROTARY TRIMMERS

These trimmers do not cut but pinch off the waste paper, leaving the print with a neatly beveled edge, which makes it easier for it to adhere to the mount.

Price

Straight Cut Trimmer \$.15
 Revolving Trimmer20

THE COMBINATION TRIMMER

This is provided with both straight and rotary cutting wheels.

Price \$.25

The AnSCO Automatic Scales



These scales are made in three different sizes and are constructed on such scientific lines that they are absolutely reliable.

AnSCO scale No. 1 has a capacity of 2 ounces by scruples.
Price \$1.50

AnSCO scale No. 2; capacity one pound; divided in half ounces.
Price \$1.50

AnSCO scale No. 3; capacity 2 pounds; divided in half ounces.
Price \$1.80

Lantern Slide Colors



ELMENDORF'S

THESE colors are very carefully prepared from the purest materials, and have been proven permanent. They are put up in concentrated form, each box containing 10 bottles of the following colors:

Light yellow, dark yellow, vermilion, brown, orange, maroon, rose, blue No. 1, violet, blue No. 2.

Box No. 1	Price.	Box No. 2	Price.
Single bottles of color, small,	\$1.50	Single bottles of color, large,	\$2.50
No. 120	No. 230

Elmendorf's New Book, "Lantern Slides: How to make and Color Them" \$1.00

DUNNE'S TRANSPARENT PASTEL COLOR OUTFIT.

These colors are prepared especially for coloring Lantern Slides and all kinds of photographic papers. No preparation is required except for Collodion Matte paper, for which we furnish a medium at 25 cents per bottle.

The outfit consists of 12 tubes of color with complete instructions and any one can color pictures or slides if they follow them.

Price of box of 12 tubes \$1.00

Anso Non-Curling Films

Price List

	Price 6 ex.	Price 12 ex.
1½ x 2 Adapted to Pocket Kodak - - - - -	\$	\$.25
1⅝ x 2½ Adapted to No. O. Folding Pocket Kodak - - -	.15	.25
2¼ x 2¼ For No. 1 Buster Brown and adapted to No. 1 Brownie	.15	
2¼ x 3¼ For No. 2 Buster Brown, No. 3 Buster Brown, No. 1 Folding Buster Brown and adapted to No. 2 Brownie	.20	
2¼ x 3¼ Adapted to No. 1 Folding Pocket Kodak - - -	.20	.40
2½ x 4¼ For Anso Jr. and adapted to No. 1-A Folding Pocket Kodak - - - - -	.25	.50
3¼ x 4¼ For No. 2, 4 and 6 ANSCO Cameras, also adapted to No. 3 Folding Pocket Kodak, No. 3 Buck-Eye, No. 3 Folding Hawk-Eye, Stereo Hawk-Eye or No. 3 Weno Hawk-Eye - - - - -	.35	.70
3½ x 3½ For No. 1 ANSCO Camera, also adapted to No. 2 Folding Pocket Kodak, No. 2 Flexo, No. 2 Bulls- Eye, No. 2 Bullet, No. 2 Stereo Kodak, No. 4 Pano- rama Kodak, Tourist Buck-Eye, No. 2 Weno Hawk- Eye, or No. 3 B Al Vista - - - - -	.30	.60
	Price 6 ex.	Price 10 ex.
3¼ x 5½ For No. 9 and 10 Anso and adapted to No. 3-A Folding Pocket Kodak - - - - -	\$.40	\$.70
4 x 5 For No. 3, 5 and 7 ANSCO Cameras, also adapted to 4 Folding Buck-Eye, No. 4 Weno Hawk-Eye, 4 Folding Hawk-Eye, No. 4 Bulls-Eye, No. 4 Bullet or No. 4 B and No. 4 G Al Vista - - - - -	.45	Price 12 ex. .90
4¼ x 3¼ Adapted to No. 3 Cartridge Kodak - - - - -	.35	.70
5 x 4 Adapted to No. 5 B, 5 D, 5 F, No. 5 C Al Vista Cameras or No. 4 Cartridge Kodak - - - - -	.45	.90
7 x 5 Adapted to No. 7 D, No. 7 E, No. 7 F, Al Vista Cameras or No. 5 Cartridge Kodak - - - - -	.80	1.60
4 x 5 R-H Adapted to 4 Horizontal Roll Holder - - -		.90
4¼ x 3¼ R-H Adapted to 3 Vertical Roll Holder - - -		.70
5 x 4 R-H Adapted to 4 Vertical Roll Holder - - -		.90
7 x 5 R-H Adapted to 5 Vertical Roll Holder - - -		1.60

ANSCO VIDIL FILMS

		ex.
3¼ x 4¼ For No. 4 and No. 6 ANSCO Cameras	\$.70	12
3¼ x 5½ For No. 9 and No. 10 " "	.70	8
4 x 5 For No. 5 and No. 7 " "	.90	10

Cyko Paper

CYKO is a paper of the development class, which prints at any time, in any light, and from all classes of negatives. The transparencies and richness of the blacks and the power of bringing out details and simplicity of manipulation are the main features which account for the popularity of Cyko.

It is this paper that makes it possible for the amateur, who is generally too busy throughout the day, to utilize his evening hours making prints from his negatives.

Cyko is divided into two grades, and the grade is represented by the color of the label,—BLUE LABEL, YELLOW LABEL.

Blue Label indicates the Contrast Grade, which is suitable for making prints from flat or over-timed negatives.

Yellow Label indicates the Normal grade, which is intended for general use. It is medium in speed, produces excellent prints from the average negative and has great latitude. It is the paper which should generally be used.

Cyko is made in five different surfaces: Studio, Rough, Semimatte, Matte, and Glossy.

The Studio surface, which is a velvety surface, and the Semimatte, are the best surfaces for beginners. Our Cyko Manual will give full instructions how to work Cyko, and contains all other information pertaining to this paper.

SIZE	PRICE			
	CYKO		DOUBLE WEIGHT CYKO	
	Doz.	Gross	Doz.	Gross
2¼ x 3¼	\$.12	\$ 1.20		
2½ x 2½10	1.00		
2½ x 4¼12	1.20		
3¼ x 4¼12	1.20		
3½ x 3½12	1.20		
3¾ x 5½ Cabinets15	1.50	\$.25	\$ 2.00
4 x 515	1.50	.25	2.00
4 x 620	1.80		
4¼ x 4¼15	1.50		
4¼ x 5½20	1.80		
4¼ x 6½25	2.50		
5 x 730	3.00	.35	3.50
5 x 835	3.50	.40	4.00
5½ x 7¾35	4.00	.45	4.50
6 x 845	4.50	.50	5.00
6½ x 8½50	5.00	.60	6.00
7 x 955	6.00	.65	7.00
7½ x 9½60	6.50	.75	8.00
8 x 1070	7.00	.80	9.00
9 x 1190	8.50		
10 x 12	1.00	10.00	1.20	13.50
11 x 14	1.35	14.00	1.60	17.50
14 x 17	2.00	21.00	2.40	27.00
16 x 20	2.50	28.00	3.20	36.00
18 x 22	3.00	34.00	4.00	46.00
20 x 24	3.60	40.00	4.80	55.00
10 ft. rolls (25 in. wide)	2.00			2.25
10 yd. rolls (25 in. wide)	5.00			6.00

CYKO POSTAL CARDS

Made in two surfaces, Semimatte and Glossy.

Dozen	\$.20
Gross	2.00

CYKO SUNDRIES

Cyko H. M. Developer, per box, 5 tubes	\$.50
Cyko Acid Hypo, price per package15
Cyko Acid Hypo, price per dozen packages	1.50
Cyko (Non-Abrasion) Liquid developer, 4 oz. bottles (make 20 ozs.)25
Cyko Hyper Incandescent Gas Lamp	1.50
Cyko Re-Developer for Brown, and Sepia Tones; 4 oz. bottles50

ROYAL PAPER

There are still some amateurs who prefer a sun printing paper and to those we recommend the Royal, which is a paper that prints by sunlight and is toned with toning solution instead of being developed. The Royal is a rapid, highly glossy printing paper with an insoluble film which tones equally well in single or combined bath:

SIZE	Doz.	² Doz.	GROSS	SIZE	Doz.	¹ / ₂ Doz.	GROSS
3¼ x 4¼		\$.18	\$ 1.05	6½ x 8½	\$.40	\$ 2.15	\$ 3.80
3½ x 3½		.18	1.05	7 x 9	.45	2.50	4.50
3¾ x 5½	\$.18		1.25	7½ x 9½	.50	2.75	5.00
4 x 5		.22	1.10	8 x 10	.54	3.15	5.85
4 x 6	.18		1.45	9 x 11	.68	4.05	7.20
4¼ x 4¼		.22	1.10	10 x 12	.81	4.75	9.00
		¹ / ₂ Gross		11 x 14	1.08	6.30	11.70
5 x 7	.27	1.45	2.40	14 x 17	1.62	9.45	18.00
5 x 8	.27	1.60	2.70	16 x 20	2.16	12.60	24.30
5½ x 7¾	.31	1.70	2.95	18 x 22	2.70	15.75	30.60
6 x 8	.36	2.00	3.60	20 x 24	3.15	18.45	36.00

Cabinet Seconds	1.00
4 x 5 Seconds Trimmed90
Cabinet Proofs75
10 ft. rolls (25 in. wide)	1.60
10 yd. " "	4.00

ROYAL COMBINED TONING AND FIXING POWDER

Price per package	\$.25
" dozen packages	2.75

The Hammer Dry Plates

IT is needless for us to dwell here on the fine qualities of this well known dry plate, for they are used extensively throughout the United States and foreign countries. These plates are manufactured in several brands, to accommodate all branches of photography.

WRITE FOR HAMMER BOOKLET.

PRICE LIST.

SIZE.	Slow, Fast, Extra Fast, Special, Orthochromatic Per Dozen.	Non-Halation, Orthochromatic Aurora Per Dozen.	X-Ray Per Dozen.	X-Ray Double Coated Per Dozen.
1 x 1¼	\$.20			
2 x 2	.20			
2½ x 2½	.30			
2½ x 4	.35			
3 x 3	.35			
3 x 3½	.35			
3¼ x 3¼	.40			
3¼ x 3½	.40			
3½ x 3½	.40			
3¼ x 4¼	.45	\$.55		
4¼ x 4¼	.60			
4 x 5	.65	.80		
4¼ x 5½	.75	.95		
4¼ x 6½	.90	1.10		
4¾ x 6½	.90	1.20		
5 x 7	1.10	1.40	\$ 1.40	1.70
5 x 8	1.25	1.55	1.55	1.85
6½ x 8½	1.65	2.10	2.10	2.55
7 x 9	2.00			
7 x 10	2.10	2.65		
8 x 10	2.40	3.00		
10 x 12	4.20	5.15	3.00	3.60
11 x 14	6.00	7.25	5.15	6.10
14 x 17	9.00	11.25	7.25	8.50
16 x 20	13.25	16.40	11.25	13.50
17 x 20	14.00	17.25		
18 x 22	16.50	20.40		
20 x 24	20.00	24.65		

HAMMER RETOUCHING VARNISH

Dozen in Case. Ounces in Each Bottle. Price per Bottle.
 1 16 50c.

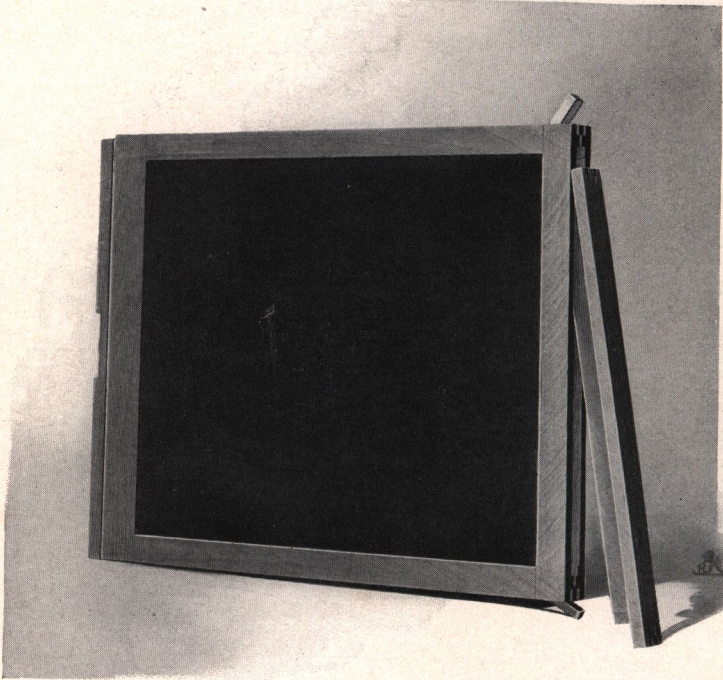
Alba Photo Paste



Price

	Each.	Dozen.	Gross.
2 ounces	\$.10	\$.70	\$ 7.00
3 "15	1.00	10.00
5 "20	1.70	17.00
6 "25	2.30	22.00
9 "35	3.20	30.00
16 "50	5.50	55.00
32 "75	8.00	80.00
2 " tubes10	1.20	12.00

Anthony's Zephyr Double Dry Plate Holders



THESE holders are extremely light and very strong. It is the easiest holder to load and unload, as the plates are inserted and withdrawn from the end of the holder. There is no spring to press that necessitates touching the plate with the fingers, which often scratches the negative, nor that would by shaking be liable to throw the plates out of position, as is the case with most holders which rely on a spring at the bottom of the holder to secure the plate.

The Zephyr holder has all the advantages of the English book style of holders, with the additional advantage of greater compactness and lower cost.

These holders are provided with press board slides and an ingenious device for holding the slides in place and preventing their being accidentally drawn out when the holders contain the unexposed plates. The sizes above 8 x 10 are supplied with rubber slides.

SIZE	PRICE	SIZE	PRICE
4 x 5	\$1.20		
5 x 7	1.25		
5 x 8	1.35	10 x 12, with hard rubber slides	\$3.00
6½ x 8½	1.75	11 x 14	4.50
8 x 10	2.00	14 x 17	6.00

Dry Plate Kits for Holders

A KIT is a thin wooden frame for holding smaller plates in large plate holders, and this article in itself is very simple in construction, but not so simple that details can be overlooked in manufacture; for the value of a kit depends greatly on how well the wood has been seasoned and how carefully the joints are dovetailed and put together. If careful attention is not given to these details, the kit will warp and become useless.

The Anthony kits are all that can be required and their unique value depends on their careful construction.

SIZE OUTSIDE	SIZE OF OPENING FOR PLATES	PRICE
4 x 5	3¼ x 4¼	\$.20
5 x 7	3¼ x 4¼ 4 x 5 4¼ x 6½	.25
5 x 8	3¼ x 4¼ 4 x 5 4¼ x 6½	.25
6½ x 8½	4 x 5 4¼ x 6½ 5 x 6 5 x 8	.30
8 x 10	4¼ x 6½ 5 x 7 5 x 8 6½ x 8½	.35
10 x 12	6½ x 8½ 8 x 10	.40
11 x 14	8 x 10 10 x 12	.50

ANSCO DEVELOPING TRAYS

The AnSCO tray is not easily broken, and is not affected by the action of chemicals. It is a composition tray, much the same in appearance as a hard rubber tray.

SIZE	PRICE	SIZE	PRICE
3¼ x 4¼	\$.12	5 x 8	\$.39
4 x 5	.17	6½ x 8½	.70
5 x 7	.35	8 x 10	.95

THE EMPIRE HARD RUBBER TRAYS

These trays are deeper than any heretofore offered to the trade in the smaller sizes, and as deep as any in the larger sizes. Following are the sizes and prices:

Size.	Price.	Size.	Price.
4½ x 5¼	\$.50	7 x 9	\$.94
5¼ x 7¼61	8½ x 10½	1.21
5½ x 8½72		

HARD RUBBER TRAYS

These goods, manufactured of genuine hard rubber, have been long and favorably known to the profession, and meet with universal approval.

Size.	Price.
4¼ x 5¼	\$.67
5¼ x 7¼83
5½ x 8½95
7 x 9	1.16
8½ x 10½	1.50
10¼ x 12¾	2.20
12 x 16	3.40

GLASS TRAYS

Clear or Amber, for 4 x 5 plates or under	\$.16
“ “ “ 5 x 8 “ “25
“ “ “ 7 x 9 “ “40
“ “ “ 8 x 10 “ “50

PORCELAIN TRAYS

The dimensions given are for inside the bottom of the tray.

Size	Deep.
5 x 7	\$.62
5½ x 8½75
7 x 982
8 x 10	1.00
10 x 12	1.66
12 x 14	2.64

ELITE PORCELAIN LINED TRAYS

These trays have been introduced to meet the demand for a strong tray with a fine surface, such as porcelain, that can be readily kept clean, yet not be so fragile as the porcelain trays, and at the same time less expensive. These trays will fulfil the above requirements, and are proof against any acids used in the photographic business.

In ordering please state number.

PRICES:

No.		For Plate.	Inches deep.	Each.
1—	4¾ x 5¾	4 x 5	1¼	\$.25
2—	5¼ x 7¾	5 x 7	1½50
3—	5½ x 8¾	5 x 8	1½63
4—	7¼ x 9¾	7 x 9	1¾75
5—	8¼ x 10¾	8 x 10	1¾	1.13
6—	10¼ x 12½	10 x 12	2	1.70
7—	12½ x 15½	11 x 14	2¼	2.25
8—	13½ x 17½	12 x 16	2¾	2.63

HARD RUBBER FIXING BATHS

4 x 5	\$2.50
5 x 7	3.05
6½ x 8½	4.10
8 x 10	4.60

AMBER GLASS FIXING BATHS

No. 1 for 12	4 x 5 plates	\$1.25
“ 2 “ 12	5 x 7 “	1.50
“ 2 “ 18	4 x 5 “	1.50

Wynne's Infallible Exposure Meter



THESE four conditions governing exposure are all taken into account. These conditions are: (1) The intensity of the light which illuminates the subject; (2) diaphragm or stop employed; (3) the character of the subject; (4) the sensitiveness of the plate used. The first is determined by the time taken for the sensitive paper in the actinometer to color to standard tints. This varies from two or three seconds to a minute or so, and is called the actinometer time. The instrument is marked with the diaphragm numbers. A table of the relative sensitiveness of the various brands of plates is supplied with each instrument. To calculate the correct exposure, one moment only is necessary. The movable scale of the instrument is turned until the actinometer time in seconds upon the exposure scale is opposite the diaphragm number of the plate. The correct exposure in seconds and fractions of seconds will be found against each stop, from the largest to the smallest.

Price, with full instructions, in handsome solid nickel case	\$2.50
In Locket Size, silver	3.00
In Locket Size, 14-karat rolled gold	4.50
Extra tins sensitized paper15
Extra dials and glasses25
Extra Book of Instructions05
Extra Speed Cards05

Sundries

Glass Funnels		Anthony Non-Actinic Paper	
½ pint	\$.15	12 x 19" sheets, per dozen .	\$1.50
Quart25	Cepa Skin Paper	
Olmstead's Lantern Slide Mats		Per dozen20
Price per 10075	Joseph Paper	
Covering Glass for Lantern Slides		Per quire20
Per dozen30	Per ream	4.50
Per gross	3.00	Gum or Sticking Paper	
Lantern Slide Binders (Model)		Per dozen20
Price per carton of 50 strips .	.20	Per gross	2.50
Manning's Masks		Needle Paper	
Assortment of 1225	Per dozen25
Regal Blotting Paper 100 lbs.		Per ream	8.00
19 x 24, per dozen26	Post Office Paper	
Per ream	9.00	Per dozen20
World Blotting Paper		Per ream	6.00
19 x 24, per dozen60	Shepley's Gum Paper	
Per ream	16.00	Per roll, 300 yds.60
Passe Partout Binding		Metallic Magnesium Powder	
Price per roll, 12 yds., 7/8"		Per ounce30
wide20	Per pound	4.25
India Ink			
Lion Head, per stick20	DEVELOPERS	
" " per pound	6.50	Anthony Eikonogen Developer	
(40 sticks)		8 oz. bottles25
Spotting Colors		16 oz. bottles45
For spotting prints, in sets		Anthony Hydrochinone Developer	
of 3 colors, per set15	8 oz. bottles25
Gihon's Opaque		Pint bottles45
Per box50	Quart bottles80
A. & S. Opaque		Stanley's Concentrated Developer	
Semi-liquid in porcelain jars .	.35	Per set50
Hard in porcelain cups25	Anthony Pyro Developing Powders	
U. S. Photo Clips		Per box of 6 powders, each	
Per gross	2.50	making 4 ozs. solution . .	.25
Per dozen25	Anthony Metol-Hydro Dev. Powder	
Anthony Sensitive Litmus 9 x 11"		Per box of 6 powders, each	
Per sheet10	making 4 ozs. solution . .	.25
Per dozen	1.00	Anthony Hydro Developing Powders	
100 pieces in tube15	Per box of 6 powders, each	
		making 4 ozs. solution . .	.25

Sundries

Continued

Anthony Eikonogen Dev. Powders.	Ruby and Orange Fabric
Per box of 6 powders, each	Per square yard
making 4 ozs. solution . . \$.25	.50
Anthony Eikonogen-Hydro Developing Powders	Tumbler Graduates
Per box of 6 powders, each	4 ozs. \$.10
making 4 ozs. solution . . .25	8 ozs.20
Hydro Developing Tubes	16 ozs.35
Per box of 3 tubes25	Scovill Double Level
Hammer One-powder Dry Developer	Price40
Six capsules in each box . . .25	Negative Preservers
Acid Sulphite of Soda	3¼ x 4¼ per 10020
Pint bottle40	4 x 5 "22
E. A. Platinité	5 x 7 "28
15 grain vial60	6½ x 8½ "40
¼ oz. vial 3.50	8 x 10 "50
½ oz. vial 6.50	Transparent Celluloid Forms
1 oz. vial 12.00	No. Ovals
E. A. Negative Dryer	1 2 x 2¾ "25
8 oz. bottle50	8 2½ x 3½ "30
Anthony Permanent Reducer	9 1⅞ x 3⅞ "35
8 oz. bottle25	2 3⅞ x 4⅞ "35
E. A. Intensifier	10 2¾ x 5¼ "40
Per set50	3 3½ x 5 "40
Badeau's Retouching Varnish	11 3 x 6⅞ "40
Per bottle, small15	4 3¾ x 5¾ "50
" " medium25	6 2⅝ In. circles50
" " large50	5 3 " "30
Absorbent Cotton	7 3¾ " "35
Per package, 1 ounce05	12 2½ x 6½ "40
" " 2 "08	Brass Cut-out Forms
" " 4 "15	No. Inches
" " 8 "25	0 Oval 1⅞ x 2½
" " 1 pound40	1 " 2 x 2¾
Dermaline	2 " 3⅞ x 4⅞
A most exquisite and pleasant	3 " 3½ x 5
preparation for softening the	4 " 3¾ x 5¾
skin, and protecting the	5 Circle 3
hands from the effects of	6 " 3⅞
chemicals.	7 " 3¾
Per bottle25	8 Oval 2½ x 3½
Hydrometers50	9 " 1⅞ x 3⅞
Bulbs and Tubing for Anasco	10 " 2¾ x 5¼
cameras25	11 " 3 x 6⅞
	Price per dozen 3.00
	Each30

Sundries

Continued

Efficient Plate Lifters
Price, (each) \$.15

Pure Rubber Finger Tips
Per set of 315
Per dozen sets 1.50

Press Board Slides for Dry Plate Holders
3¼ x 4¼10
4 x 510
5 x 715
6½ x 8½25
8 x 1025

Rubber Slides for Dry Plate Holders
3¼ x 4¼15
4 x 520
5 x 730
6½ x 8½40
8 x 1050

Camel's Hair Dusters

Size	Per dozen	Each
1 in.	\$2.2520
1½ "	3.4530
2 "	5.0045
2½ "	7.4065
3 "	9.2580

Bristle Brushes

Width	Each
1 In.12
1½ "20
2 "25
2½ "30
3 "40

THE SIMPLEX WASHING BOX

No. 1 \$1.00
No. 2 1.25

THE SCOVILL NEGATIVE WASHING BOXES

PRICE LIST
(Adaptable)

For 4 x 5 Plates and Smaller Sizes . . . \$1.75
 " 4¼ x 5½ " " " " . . . 1.90
 " 4¼ x 6½ " " " " . . . 2.00
 " 5 x 7 " " " " . . . 2.00
 " 5 x 8 " " " " . . . 2.00
 " 6½ x 8½ " " " " . . . 2.00
 " 8 x 10 " " " " . . . 2.25
 " 8 x 10 Adjustable Washing Box . . . 4.00
 Adaptable for 6½ x 8½, 5 x 8, 5 x 7, 4 x 5, 3¼ x 4¼
 plates. All sizes to be washed at once.