

Kodak

ALL OUTDOORS INVITES YOUR KODAK

KODAKERY is an all-the-year-round diversion; but it is in the Summer time that mother nature most alluringly invites your Kodak.

The lakes, the streams, your friends,—all aided and abetted by the smiling sun,—invite your Kodak.

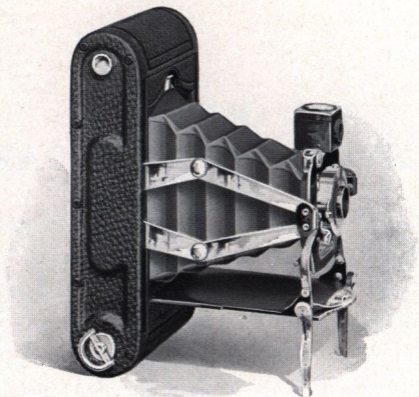
The new faces and new places of vacation days combine in the suggestion: "Take a Kodak with you."

Respond to this suggestion and you will find that the Kodak has made photography so simple that you can make good pictures from the very beginning.

EASTMAN KODAK COMPANY

ROCHESTER, N. Y.

The Kodak City



Nos. 1 and 1A FOLDING POCKET KODAKS

IN DETAIL

No. 1 Folding Pocket Kodak.—For rectangular pictures, $2\frac{1}{4} \times 3\frac{1}{4}$ inches. Capacity, 12 exposures without reloading. Size of Kodak, $6\frac{3}{4} \times 3\frac{1}{2} \times 1\frac{5}{8}$ inches. Weight, 16 ounces. Lens, Meniscus Achromatic, 4-inch focus. Shutter, Pocket Automatic. Brilliant reversible finder.

No. 1A Folding Pocket Kodak.—For rectangular pictures, $2\frac{1}{2} \times 4\frac{1}{4}$ inches. Capacity, 12 exposures without reloading. Size of Kodak, $7\frac{3}{4} \times 3\frac{7}{8} \times 1\frac{3}{4}$ inches. Weight, 20 ounces. Lens, Meniscus Achromatic, 5-inch focus. Shutter, Pocket Automatic. Brilliant reversible finder.

Nos. 1 and 1A

F. P. KODAKS—*Continued*

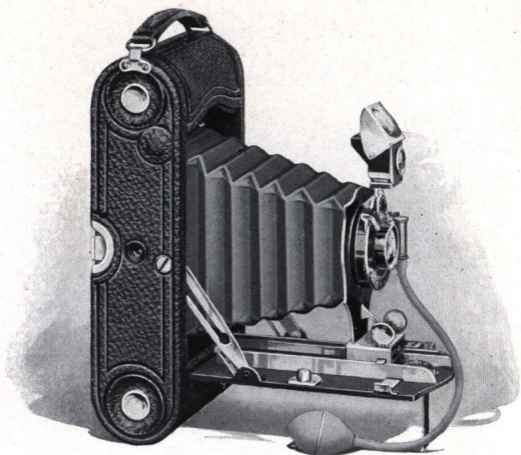
THESE little Kodaks, differing only in the size of the pictures they make, are designed for those who wish a compact folding camera, which can be easily carried in the pocket and which will make pictures without the necessity of focusing or estimating distances.

Upon opening the camera the front springs automatically into position, ready at once for making pictures of objects at any distance. A reversible finder makes composition easy, and slight pressure of the shutter lever makes the exposure.

When closed the bed folds over front and bellows, concealing all adjustments, and the camera can then be very conveniently carried in any coat pocket.

THE PRICE

No. 1 Folding Pocket Kodak, with Meniscus Achromatic Lens, Pocket Automatic Shutter, - - - - -	\$10.00
Black Sole Leather Carrying Case, with strap,	1.25
N. C. Film Cartridge, 12 exposures, 2¼ x 3¼,	.40
Ditto, 6 exposures, - - - - -	.20
Kodak Portrait Attachment - - - - -	.50
No. 1A Folding Pocket Kodak, with Meniscus Achromatic Lens, Pocket Automatic Shutter, - - - - -	12.00
Black Sole Leather Case, with shoulder strap,	1.25
N. C. Film Cartridge, 12 exposures, 2½ x 4¼,	.50
Ditto, 6 exposures, - - - - -	.25
Kodak Portrait Attachment, - - - - -	.50



|| No. 1A FOLDING POCKET KODAK *SPECIAL*

IN DETAIL

No. 1A Folding Pocket Kodak Special.—For rectangular pictures $2\frac{1}{2} \times 4\frac{1}{4}$ inches. Capacity, 12 exposures without reloading. Size of Kodak, $8 \times 2 \times 3\frac{3}{4}$ inches. Weight, 23 ounces. Lens, double combination, Rapid Rectilinear, speed f. 8, focal length 5 inches. Shutter, Kodak Ball-Bearing. Automatic focusing lock. Two tripod sockets. Brilliant reversible finder.

No. 1A

F. P. KODAK SPECIAL—Continued

SO very popular is the $2\frac{1}{2} \times 4\frac{1}{4}$ size that a Kodak of finest quality for such pictures is a matter of course.

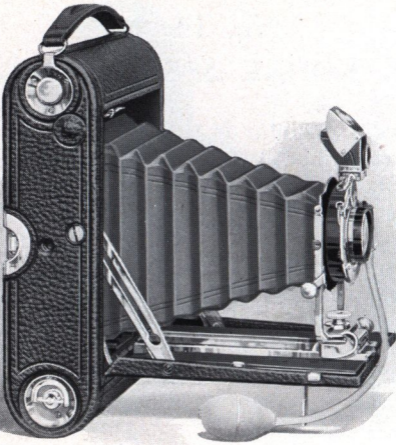
This model is regularly fitted with the finest R. R. lens and Kodak Ball Bearing shutter, while it will accommodate anastigmat lenses when desired.

And although suitable for the most serious work, it slips easily into the pocket and may be readily operated by the beginner.

The body is made of aluminum, with finest quality leather covering and nickeled fittings. Compact, inexpensive, effective, it is a splendid instrument for daylight-all-the-way photography and will appeal to the most fastidious.

THE PRICE

No. 1A Folding Pocket Kodak Special, R. R.	
Lens, Kodak Ball Bearing Shutter, -	\$15.00
Ditto, with Kodak Automatic Shutter and Zeiss Kodak Anastigmat Lens, f. 6.3, -	40.50
Ditto, with Compound Shutter, highest speed 1-250 second - - - - -	46.30
Black Sole Leather Carrying Case, with strap,	1.25
N. C. Film Cartridge, 12 exposures, $2\frac{1}{2} \times 4\frac{1}{4}$,	.50
Ditto, 6 exposures, - - - - -	.25
Kodak Portrait Attachment, - - - - -	.50



Nos. 3 and 4 FOLDING POCKET KODAKS IN DETAIL

- No. 3 Folding Pocket Kodak.**—For rectangular pictures, $3\frac{3}{4} \times 4\frac{1}{4}$ inches. Capacity, 12 exp. without reloading. Size of Kodak, $7\frac{1}{2} \times 4\frac{1}{2} \times 1\frac{3}{4}$ inches. Weight, 23 oz. Lens, double combination, Rapid Rectilinear, speed f. 8, focal length 5 inches. Shutter, Kodak Ball Bearing. Tripod sockets. Brilliant reversible finder with hood. Automatic focusing lock. Rising and sliding front.
- No. 4 Folding Pocket Kodak.**—For rectangular pictures, 4×5 inches. Capacity, 12 exposures without reloading. Size of Kodak, $9 \times 5\frac{3}{4} \times 2\frac{1}{4}$ inches. Weight, 2 pounds, 11 ounces. Lens, double combination, Rapid Rectilinear, speed f. 8, focal length $6\frac{1}{2}$ inches. Shutter, Kodak Ball Bearing. Two tripod sockets. Brilliant reversible finder with hood. Automatic focusing lock. Rising and sliding front.

Nos. 3 and 4

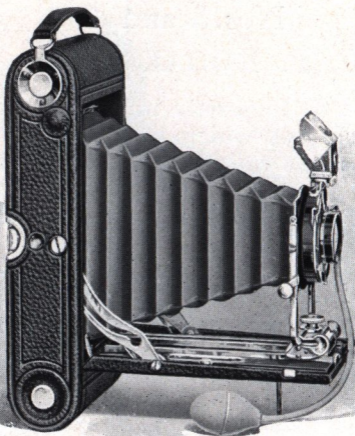
F. P. KODAKS—Continued

DIFFERING only in the size of the pictures which they make, these two Kodaks will meet the requirements of the most advanced amateur, while at the same time they can be easily used by the merest beginner.

Each is beautifully finished, and will accommodate glass plates by the addition of a simple adapter, which slips on in place of the regular back and takes double plate holders.

THE PRICE

No. 3 F. P. K., R. R. lens, Kodak Ball Bearing Shutter, - - - - -	\$17.50
Ditto, with Kodak Automatic Shutter, -	22.50
Ditto, with Kodak Automatic Shutter and Zeiss Kodak Anastigmat Lens, f. 6.3, -	43.00
Ditto, with Compound Shutter, highest speed 1-250 second, - - - - -	48.80
Black Sole Leather Carrying Case, with strap,	1.25
Combination Back, for $3\frac{1}{4} \times 4\frac{1}{4}$ plates -	3.50
Double Glass Plate Holder, $3\frac{1}{4} \times 4\frac{1}{4}$, - - -	1.00
N. C. Film Cartridge, 12 exposures, $3\frac{1}{4} \times 4\frac{1}{4}$,	.70
Ditto, 6 exposures, - - - - -	.35
Ditto, "double-two" cartridge, 4 exposures,	.25
Kodak Portrait Attachment, - - - - -	.50
No. 4 F. P. K., R. R. Lens, Kodak Ball Bearing Shutter, - - - - -	20.00
Ditto, with Kodak Automatic Shutter, - - -	25.00
Ditto, with Compound Shutter, highest speed 1-200 second, and Zeiss Kodak Anastigmat Lens, f. 6.3, - - - - -	61.40
Black Sole Leather Carrying Case, with strap,	1.50
Glass Plate Adapter, 4 x 5, with ground glass	3.50
Double Glass Plate Holders, 4 x 5, each, -	1.00
N. C. Film Cartridge, 12 exposures, 4 x 5 -	.90
Ditto, 6 exposures, - - - - -	.45
Ditto, "double-two" cartridge, 4 exposures,	.30
Kodak Portrait Attachment, - - - - -	.50



No. 3A FOLDING POCKET KODAK

IN DETAIL

No. 3A Folding Pocket Kodak.—For rectangular pictures, $3\frac{1}{4} \times 5\frac{1}{2}$ inches. Capacity, 10 exposures without reloading. Size of Kodak, $9\frac{1}{2} \times 4\frac{3}{4} \times 1\frac{7}{8}$ inches. Weight, 41 ounces. Lens, double combination, Rapid Rectilinear, speed f. 8, focal length $6\frac{1}{2}$ inches. Shutter, Kodak Ball Bearing. Two tripod sockets. Brilliant reversible finder with hood. Automatic focusing lock. Rising and sliding front.

No. 3A F. P. KODAK—Continued

THE thorough equipment of this model, the ease with which it may be operated, its attractive appearance, and the artistic proportions of the pictures which it takes, has made the 3A Folding Pocket Kodak the most popular of all cameras.

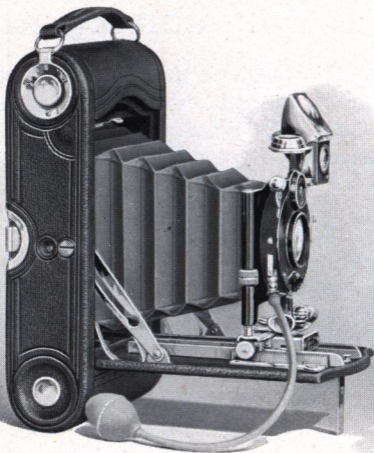
It is fitted with Kodak Ball Bearing shutter, which makes it especially effective for instantaneous work, and the best R. R. lens obtainable outside of the anastigmats.

It has rising, sliding and falling front, automatic focusing lock, and reversible finder. And while thus equipped for the most serious work, it can be effectively handled even by the absolute novice.

Glass plates may be used by the addition of a combination back, interchangeable with the regular back.

IN DETAIL

No. 3A F. P. Kodak, R. R. Lens, Kodak Ball Bearing Shutter, - - - -	\$20.00
Ditto, with Kodak Automatic Shutter, -	25.00
Ditto, with Compound Shutter, highest speed 1-200 second, and Zeiss Kodak Anastigmat Lens, f. 6.3, - - - -	61.40
Black Sole Leather Carrying Case, with strap,	1.50
Combination Back, - - - -	3.50
Double Glass Plate Holders, $3\frac{1}{4} \times 5\frac{1}{2}$, each,	1.00
N. C. Film Cartridge, 10 exposures, $3\frac{1}{4} \times 5\frac{1}{2}$,	.70
Ditto, 6 exposures, - - - -	.40
Ditto, "double-two" cartridge, 4 exposures,	.30
Kodak Portrait Attachment, - - - -	.50



No. 3 and 3A SPECIAL KODAK

IN DETAIL

No. 3 Special Kodak.—For rectangular pictures, $3\frac{1}{4}$ x $4\frac{1}{4}$ inches. Capacity, 12 exposures without re-loading. Size of Kodak, $1\frac{7}{8}$ x $4\frac{1}{2}$ x 8 inches. Weight, 32 ounces. Lens, Zeiss Kodak Anastigmat, speed f. 6.3, focal length, 5 inches. Shutter, Compound. Two tripod sockets. Brilliant reversible finder, with hood. Spirit level. Double focusing scale for use with either film or plates. Rack and pinion for focusing.

No. 3A Special Kodak.—For rectangular pictures, $3\frac{1}{4}$ x $5\frac{1}{2}$ inches. Capacity, 10 exposures without re-loading. Size of Kodak, $9\frac{1}{2}$ x $4\frac{3}{4}$ x 2 inches. Weight, 42 ounces. Lens, Zeiss Kodak Anastigmat, speed f. 6.3, focal length, $6\frac{1}{2}$ inches. Shutter, Compound. Two tripod sockets. Brilliant reversible finder, with hood. Spirit level. Double focusing scale for use with either film or plates. Rack and pinion for focusing.

Nos. 3 and 3A

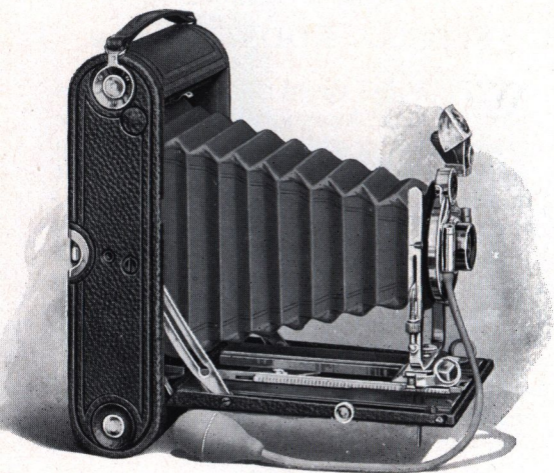
SPECIAL KODAKS—*Continued*

WITH high speed shutters and Zeiss Kodak Anastigmat lenses, these cameras offer the photographer an equipment for work of the very highest quality. And this without sacrifice of the underlying principle of Kodak simplicity, for no special experience is necessary to operate either effectively.

And the cameras are most beautifully finished. They are covered with Persian morocco of the finest quality, which, in combination with the black leather bellows and nickeled fittings of the cameras, produces a very handsome, rich appearance.

THE PRICE

No. 3 Special Kodak, Zeiss Kodak Anastigmat Lens f. 6.3, Compound Shutter, highest speed 1-250 second. - - -	\$52.00
Grain Leather, Velvet Lined Case, with strap,	2.75
Combination Back, - - - - -	4.00
Double Glass Plate Holders, $3\frac{1}{4} \times 4\frac{1}{4}$, each,	1.00
N. C. Film Cartridge, 12 exposures, $3\frac{1}{4} \times 4\frac{1}{4}$,	.70
Ditto, 6 exposures, - - - - -	.35
Ditto, "double-two" cartridge, 4 exposures,	.25
Kodak Portrait Attachment, - - - - -	.50
No. 3A Special Kodak, Zeiss Kodak Anastigmat Lens, f. 6.3, Compound Shutter, highest speed 1-200 second, - - -	65.00
Grain Leather, Velvet Lined Case, with strap,	3.00
Combination Back, - - - - -	4.00
Double Glass Plate Holders, $3\frac{1}{4} \times 5\frac{1}{2}$, each,	1.00
N. C. Film Cartridge, 10 exposures, $3\frac{1}{4} \times 5\frac{1}{2}$,	.70
Ditto, 6 exposures, - - - - -	.40
Ditto, "double-two" cartridge, 4 exposures,	.30



No. 4A FOLDING KODAK

IN DETAIL

No. 4A Folding Kodak.—For rectangular pictures, $4\frac{1}{4} \times 6\frac{1}{2}$ inches. Capacity, 6 exposures without reloading. Size of Kodak, $11 \times 6\frac{1}{2} \times 2\frac{5}{8}$ inches. Weight, 4 pounds, 4 ounces. Lens, double combination, Rapid Rectilinear, speed *f.* 8, focal length $8\frac{1}{4}$ inches. Shutter, B. & L. Automatic. Rising and sliding front. Rack and pinion for focusing. Two tripod sockets. Brilliant reversible finder with hood.

No. 4A F. KODAK—Continued

THE taking of large pictures no longer necessitates a bulky and cumbersome outfit, as it has required but a slight increase in the dimensions of the popular Folding Pocket Kodaks to produce this light and compact instrument, taking $4\frac{1}{4} \times 6\frac{1}{2}$ pictures.

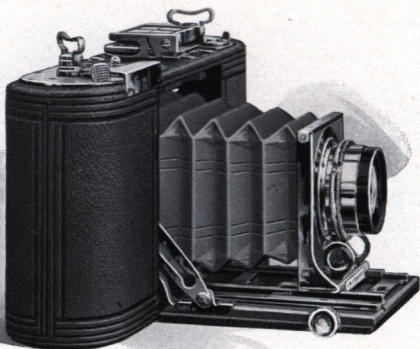
Retaining all the popular features of the Folding Pocket Kodaks, this camera meets the requirements of those who, from either choice or necessity, must have large size pictures.

Has rising and sliding front, rack and pinion for easy focusing and tripod sockets. Camera body made of aluminum and covered with finest black seal grain leather.

By means of an adapter, glass plates may be used when desired, and the Kodak Portrait Attachment will permit the making of excellent bust portraits.

THE PRICE

No. 4A Folding Kodak, R. R. Lens, B. & L.	
Auto. Shutter, - - - - -	\$35.00
Ditto, with Zeiss Kodak Anastigmat Lens, f. 6.3, - - - - -	72.50
Ditto, with Compound Shutter, highest speed $\frac{1}{150}$ second, - - - - -	83.45
Black Sole Leather Case, with strap, - -	2.50
Glass Plate Adapter, with ground glass, -	5.00
Double Glass Plate Holders, each, - -	1.25
N. C. Film Cartridge, 6 exposures, $4\frac{1}{4} \times 6\frac{1}{2}$,	.65
Ditto, "Double-two" Cartridge, 4 exposures,	.45
Direct View Finder, - - - - -	3.00
Kodak Portrait Attachment, - - - - -	.50



No. 1A SPEED KODAK

IN DETAIL

No. 1A Speed Kodak.—For rectangular pictures, $2\frac{1}{2}$ x $4\frac{1}{4}$ inches. Capacity, 12 exposures, without reloading. Size of Kodak, $2\frac{1}{4}$ x $4\frac{1}{2}$ x $9\frac{3}{4}$ inches. Weight, 3 pounds. Shutter, Graflex Focal Plane, speed $\frac{1}{1000}$ second to slow instantaneous. Rack and pinion for focusing, automatic standard clamp, and tripod socket. Direct view finder, with mirror attachment, permitting location of image with Kodak held on a level with the eyes, or in any other position. Automatic safety blind for protecting film when shutter is wound. Covered with the finest seal grain leather and all exposed metal parts are in gun metal finish.

No. 1A SPEED KODAK—Continued

SIMPLE to operate, small enough to be carried in a top coat pocket, this Kodak is suitable for the very highest speed photography.

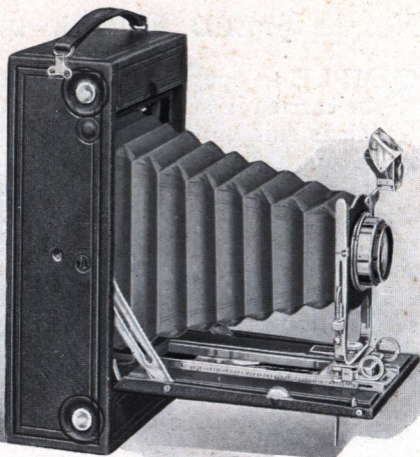
And although it will make pictures of the fastest moving objects, it can be just as easily used for home portraiture, and all other ordinary amateur work.

Its high speed is attained by the incorporation of a focal plane shutter in its construction. This is the well known Graflex Focal Plane Shutter, and permits a latitude of exposures varying from $\frac{1}{1000}$ of a second to very slow instantaneous, bulb, or time exposures. The shutter can be instantly wound by the half turn of a key, and released by touching a lever.

Has rack and pinion for easy focusing, metal parts have gun-metal finish, and covering is a very fine grain leather.

THE PRICE

No. 1A Speed Kodak, Graflex Focal Plane Shutter, without lens, - - - -	\$38.00
Ditto, with Zeiss Kodak Anastigmat Lens, No. 2, f. 6.3, - - - -	60.00
Ditto, with Series IIb B. & L. Zeiss Tessar Lens No. 4 f. 6.3, - - - -	72.50
Ditto, with Cooke Series IV Lens No. 25, f. 5.6, - - - -	76.00
Ditto, with Series Ic B. & L. Zeiss Tessar Lens, No. 14, f. 4.5, - - - -	78.50
Black Sole Leather Carrying Case, with strap,	1.50
N. C. Film Cartridge, 12 exposures, $2\frac{1}{2} \times 4\frac{1}{4}$,	.50
Ditto, 6 exposures, - - - -	.25



No. 4_A SPEED KODAK

IN DETAIL

No. 4A Speed Kodak.—For rectangular pictures $4\frac{1}{4} \times 6\frac{1}{2}$ inches. Capacity, 6 exposures without re-loading. Size of Kodak, $11\frac{3}{4} \times 3\frac{7}{8} \times 6\frac{1}{2}$ inches. Weight, 6 pounds. Shutter, Kodak Focal Plane, speed $\frac{1}{1000}$ of a second to slow instantaneous. Rising and sliding front. Rack and pinion for focusing. Two tripod sockets. Brilliant reversible finder with hood. Also, direct view finder and focusing scale.

No. 4A SPEED KODAK—*Continued*

THE shape of the pictures made by this camera is of splendid proportions for the very high speed work for which it is adapted, as well as for the general run of amateur work.

This camera attains a maximum speed exposure of $\frac{1}{1000}$ of a second—thanks to the Kodak Focal Plane shutter, which is built into the camera box. The shutter is provided with a curtain having an adjustable opening, which, in combination with a speed tension device, regulates the duration of the exposure. The shutter is in no way complicated, but can be easily understood and operated by anyone who follows the simple directions included with the camera.

The 4A Speed shutter, of course, works for time as well as instantaneous exposures. The camera is fitted with direct view finder and is beautifully finished. Metal parts are nicked and covering is fine grain leather.

THE PRICE

No. 4A Speed Kodak, Kodak Focal Plane Shutter (without lens), - - - -	\$50.00
Ditto, with Zeiss Kodak Anastigmat Lens, f. 6.3, - - - -	90.00
Ditto, with B. & L. Zeiss Tessar Lens, f. 6.3,	111.50
Black Sole Leather Carrying Case, with strap,	2.50
Glass Plate Adapter, with ground glass, $4\frac{1}{4}$ x $6\frac{1}{2}$, - - - -	7.50
Double Glass Plate Holders, each, - - - -	1.25
N. C. Film Cartridge, 6 exposures, $4\frac{1}{4}$ x $6\frac{1}{2}$,	.65
Ditto, "double-two" cartridge, 4 exposures,	.45



No. 2 FLEXO KODAK

A THOROUGHLY satisfactory instrument for all kinds of general amateur work, this camera is of the fixed focus variety. It requires no estimating of distances, and with automatic shutter is always ready for action. Loads and unloads in daylight; constructed with the same care given to the higher priced Kodaks.

IN DETAIL

No. 2 Flexo Kodak.—For square pictures, $3\frac{1}{2} \times 3\frac{1}{2}$ inches. Capacity, 12 exposures without reloading. Size of Kodak, $5\frac{7}{8} \times 4\frac{5}{8} \times 4\frac{3}{8}$ inches. Weight, 19 ounces. Lens, single achromatic, $4\frac{1}{2}$ -inch focus. Shutter, Eastman Rotary, with three stops. Tripod socket and finder.

THE PRICE

No. 2 Flexo Kodak, Achromatic Lens, Eastman Rotary Shutter, - - - -	\$5.00
Black Sole Leather Carrying Case, with shoulder strap, - - - -	1.25
N. C. Film Cartridge, 12 exposures, $3\frac{1}{2} \times 3\frac{1}{2}$,	.60
Ditto, 6 exposures, - - - -	.30
Ditto, "Double-two" Cartridge, 4 exposures, -	.20
Kodak Portrait Attachment, - - - -	.50



No. 2 and No. 3 BULLS-EYE KODAKS

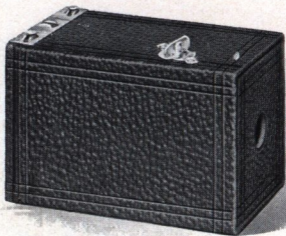
DIFFERING only in the size of pictures which they make, these Kodaks are easily opened for loading or unloading in daylight. They are of the fixed focus type and are always ready.

IN DETAIL

No. 2 and No. 3 Bulls-Eye Kodaks.—For pictures, No. 2, $3\frac{1}{2} \times 3\frac{1}{2}$ inches: No. 3, $3\frac{1}{4} \times 4\frac{1}{4}$ inches. Capacity, each 12 exposures without reloading. Size of Kodak, No. 2, $5\frac{3}{4} \times 4\frac{5}{8} \times 4\frac{1}{2}$ inches; No. 3, $4\frac{5}{8} \times 5\frac{1}{2} \times 6\frac{1}{2}$ inches. Weight, No. 2, 22 ounces; No. 3, 24 ounces. Lens, Meniscus Achromatic, $4\frac{1}{2}$ inch focus. Shutter, Eastman Rotary, with three stops. Tripod Socket, No. 2, 1; No. 3, 2. Brilliant Finders.

THE PRICE

	No. 2	No. 3
Bulls-Eye Kodak, Meniscus Achromatic Lens, Eastman Rotary Shutter, -	\$8.00	\$8.00
Black Sole Leather Carrying Case, with shoulder strap, - - -	1.25	1.25
N. C. Film Cartridge, 12 exposures, -	.60	.70
Ditto, 6 exposures, - - -	.30	.35
Ditto. "Double-two" Cartridge, 4 exposures, - - -	.20	.25
Kodak Portrait Attachment, - - -	.50	.50



No. 1 BROWNIE CAMERA

SIMPLE in construction and operation and costing but a trifle, this little camera stands the test—it takes good pictures. Makes snap shots or time exposures, and is an ideal camera for interesting the children in picture making.

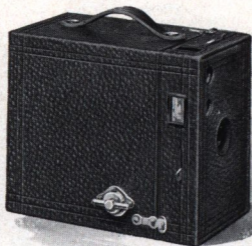
Well made, covered with imitation leather and has nickeled fittings.

IN DETAIL

No. 1 Brownie Camera.—For square pictures, $2\frac{1}{4} \times 2\frac{1}{4}$ inches. Capacity, 6 exposures without re-loading. Size of Camera, $4\frac{7}{8} \times 3\frac{1}{8} \times 3$ inches. Weight, 8 ounces. Lens, Meniscus, $3\frac{3}{4}$ -inch focus. Shutter, Eastman Rotary, with one stop.

THE PRICE

No. 1 Brownie Camera, Meniscus Lens	
Eastman Rotary Shutter, - - -	\$1.00
No. 1 Brownie Carrying Case holds Camera and Finder, - - -	.50
N. C. Film Cartridge, 6 exposures, $2\frac{1}{4} \times 2\frac{1}{4}$,	.15
Brownie Finder, detachable, - - -	.25
No. 1 Brownie Developing and Printing Outfit, including paper for 24 prints, - -	.90



Nos. 2 and 2A BROWNIE CAMERAS

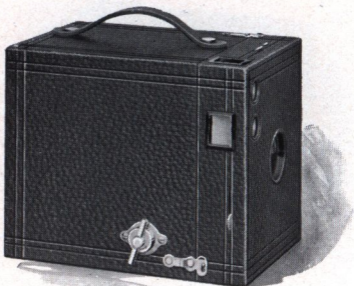
REMARKABLE pictures have been produced by these simple, fixed focus cameras even in the hands of school children, while work of the highest character has been done with them by experts.

IN DETAIL

Nos. 2 and 2A Brownie Cameras.—For rectangular pictures, No. 2, $2\frac{1}{4} \times 3\frac{1}{4}$ inches; No. 2A, $2\frac{1}{2} \times 4\frac{1}{4}$ inches. Capacity, No. 2, 6 exposures without reloading; No. 2A, 12 exposures without reloading. Size of camera, No. 2, $5\frac{5}{8} \times 4 \times 3\frac{1}{4}$ inches; No. 2A, $3\frac{7}{16} \times 5\frac{1}{8} \times 6\frac{1}{16}$ inches. Weight, No. 2, 13 ounces; No. 2A, 12 ounces. Lens, Meniscus. Shutter, Eastman Rotary, with three stops. Two finders.

THE PRICE

	No. 2	No. 2A
Brownie Camera, Meniscus Lens, Eastman Rotary Shutter, - - -	\$2.00	\$3.00
Brownie Carrying Case, with shoulder strap, - - -	.75	.75
N. C. Film Cartridge, 12 exposures, -		.50
N. C. Film Cartridge, 6 exposures, -	.20	.25
Kodak Portrait Attachment, - -	.50	.50
A B C Developing and Printing Outfit	1.50	1.50



No. 3 BROWNIE

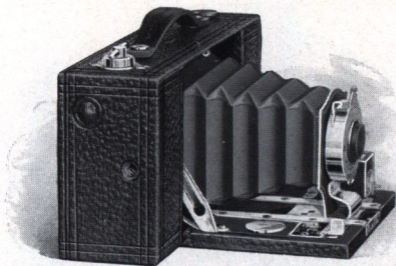
IN this camera are combined all the simple, reliable Brownie features, for those who want to make $3\frac{1}{4} \times 4\frac{1}{4}$ pictures—one of the most popular of amateur sizes. Easily operated by the children, it will satisfy the grown-up people as well. Substantially built for service.

IN DETAIL

No. 3 Brownie Cameras.—For rectangular pictures $3\frac{1}{4} \times 4\frac{1}{4}$ inches. Capacity, 12 exposures without reloading. Size of Camera, $6\frac{1}{8} \times 4\frac{3}{8} \times 5\frac{1}{8}$ inches. Weight, 24 ounces. Lens, Meniscus Achromatic, 5-inch focus. Shutter, Eastman Rotary, with three stops. Two Tripod Sockets. Two finders.

THE PRICE

No. 3 Brownie Camera, Meniscus Achromatic Lens, Eastman Rotary Shutter, - - -	\$4.00
No. 3 Brownie Carrying Case, with shoulder strap, - - - - -	1.00
N. C. Film Cartridge, 12 exposures, $3\frac{1}{4} \times 4\frac{1}{4}$,	.70
Ditto, 6 exposures, - - - - -	.35
Ditto, "Double-two" Cartridge, 4 exposures,	.25
Kodak Portrait Attachment, - - - - -	.50



No. 2

FOLDING POCKET BROWNIE

INEXPENSIVE, devoid of all complications, extremely simple to understand and to operate, this dainty little instrument brings the Brownie into the field of pocket photography.

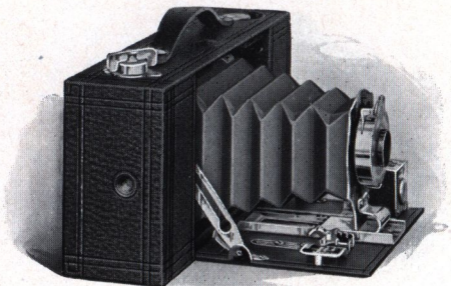
It slips easily into any ordinary coat pocket and will produce splendid $2\frac{1}{4}$ x $3\frac{1}{4}$ pictures the all-by-daylight way.

IN DETAIL

No. 2 Folding Pocket Brownie.—For rectangular pictures, $2\frac{1}{4}$ x $3\frac{1}{4}$ inches. Capacity, 6 exposures without reloading. Size of Camera, $6\frac{7}{8}$ x $3\frac{5}{8}$ x $2\frac{1}{8}$ inches. Weight, 16 ounces. Lens, Meniscus, $4\frac{1}{2}$ -inch focus. Shutter, Pocket Automatic. Two tripod sockets. Automatic focusing lock. Reversible Finder.

THE PRICE

No. 2 Folding Pocket Brownie, Meniscus Lens, Pocket Automatic Shutter, - - -	\$5.00
No. 2 Folding Pocket Brownie Carrying Case, - - -	.75
N. C. Film Cartridge, 6 exposures, $2\frac{1}{4}$ x $3\frac{1}{4}$, - - -	.20
Kodak Portrait Attachment, - - - - -	.50



No. 2A

FOLDING POCKET BROWNIE

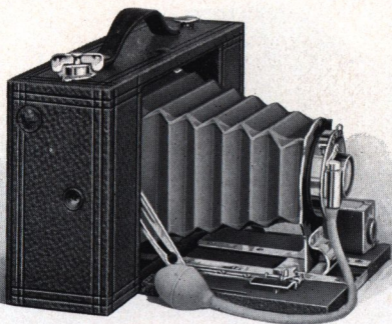
THE pleasing proportions of the pictures taken by this little Brownie, combined with its simple operation, attractive appearance and reliability, have made it one of the most popular cameras of the whole Brownie line.

IN DETAIL

No. 2A Folding Pocket Brownie.—For rectangular pictures, $2\frac{1}{2} \times 4\frac{1}{4}$ inches. Capacity, 12 exposures without reloading. Size of camera, $8\frac{1}{2} \times 2 \times 3\frac{5}{8}$ inches. Weight, 23 ounces. Lens, Meniscus Achromatic, 5-inch focus. Shutter, Pocket Automatic. Two Tripod Sockets. Automatic Focusing Lock. Reversible Finder.

THE PRICE

No. 2A Folding Pocket Brownie, Meniscus Achromatic Lens, Pocket Automatic Shutter, - - - - -	\$7.00
No. 2A Folding Pocket Brownie Carrying Case, - - - - -	.90
N. C. Film Cartridge, 12 exposures, $2\frac{1}{2} \times 4\frac{1}{4}$ inches - - - - -	.50
Ditto, 6 exposures - - - - -	.25
Kodak Portrait Attachment, - - - - -	.50



No. 3 FOLDING BROWNIE

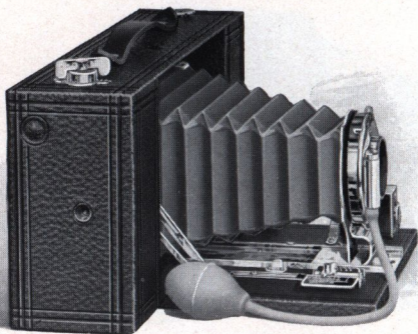
A HIGHLY efficient camera for $3\frac{1}{4}$ x $4\frac{1}{4}$ pictures, this model offers all the Brownie simplicity at modest Brownie prices, and the choice of either single or double lens.

IN DETAIL

No. 3 Folding Brownie.—For rectangular pictures, $3\frac{1}{4}$ x $4\frac{1}{4}$ inches. Capacity, 12 exposures without reloading. Size of camera, $8\frac{3}{8}$ x $4\frac{5}{8}$ x $2\frac{5}{8}$ inches. Weight, 25 ounces. Lens, Meniscus Achromatic, 5-inch focus. Shutter, F. P. K. Automatic with bulb. Automatic Focusing Lock. Two Tripod Sockets. Reversible Finder.

THE PRICE

No. 3 Folding Brownie Camera, Meniscus Achromatic Lens, F. P. K. Automatic Shutter	\$9.00
Ditto, with R. R. Lens and F. P. K. Automatic Shutter,	11.00
No. 3 Folding Brownie Carrying Case,	1.00
N. C. Film Cartridge, 12 exposures, $3\frac{1}{4}$ x $4\frac{1}{4}$,	.70
Ditto, 6 exposures,	.35
Ditto, "Double-two" Cartridge, 4 exposures,	.25
Kodak Portrait Attachment,	.50



No. 3A FOLDING BROWNIE

MAKING the most popular size pictures, $3\frac{1}{4} \times 5\frac{1}{2}$, and furnished at a moderate price, this Brownie offers opportunity for taking up picture taking with a fully reliable camera at slight expense.

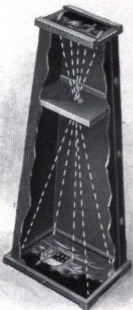
IN DETAIL

No. 3A Folding Brownie.—For rectangular pictures, $3\frac{1}{4} \times 5\frac{1}{2}$ inches. Capacity, 10 exposures without reloading. Size of camera, $2\frac{5}{8} \times 4\frac{5}{8} \times 9\frac{7}{8}$ inches. Weight, 34 ounces. Lens, Meniscus Achromatic, $6\frac{1}{2}$ -inch focus. Shutter, F. P. K. Automatic, with bulb release. Automatic Focusing Lock. Two Tripod Sockets. Reversible Finder.

THE PRICE

No. 3A Folding Brownie Camera, Meniscus Achromatic Lens, F. P. K. Automatic Shutter, - - - - -	\$10.00
Ditto, with R. R. Lens and F. P. K. Automatic Shutter, - - - - -	12.00
No. 3A Folding Brownie Carrying Case, - - - - -	1.00
N. C. Film Cartridge, 10 exposures, - - - - -	.70
Ditto, 6 exposures, - - - - -	.40
Ditto, "Double-two" Cartridge, 4 exposures, - - - - -	.30
Kodak Portrait Attachment, - - - - -	.50

BROWNIE ENLARGING CAMERAS

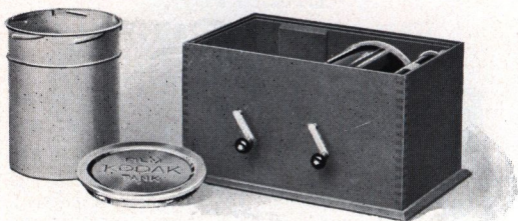


THE average amateur usually thinks of enlarging as a complicated, expensive process, requiring considerable apparatus and experience. But the Brownie Enlarging Camera has changed all this.

It consists merely of a light tight cone with attachments to hold a negative at the small end, and a sheet of Bromide paper at the other; the lens is fixed inside the cone at just the right distance to insure perfect focus. Exposure is made by daylight, and a dark room is necessary only for loading and development. The entire operation may be performed in daylight if Velox instead of Bromide paper is used, but in such case the exposure is somewhat longer.

THE PRICE

No. 2 Brownie Enlarging Camera, for 5 x 7 Enlargements from 2¼ x 3¼ negatives, -	\$2.00
No. 3, ditto, for 6½ x 8½ Enlargements from 3¼ x 4¼ negatives, - - - - -	3.00
No. 4, ditto, for 8 x 10 Enlargements from 4 x 5 negatives (will also take 3¼ x 5½ negatives), - - - - -	4.00



KODAK FILM TANK

THE tank development of film does away with the dark room. By simple methods it gives quality that was unattainable by the old methods.

The Kodak Film Tank consists of a winding box, a light proof apron and a heavily nickeled brass solution cup with cover. It is entirely self-contained, all parts packing easily within the transferring box when not in use.

To develop in the tank the film is simply wound on the transferring reel in a light tight box, a process as simple as loading the Kodak; transferred in daylight to the cup containing the developing solution; left for ten or twenty minutes, according to the strength of developer, rinsed and removed in daylight to the tray of fixing solution.

KODAK FILM TANK—*Continued*

And with its greater convenience, its elimination of the dark-room, its portability, tank development combines one even more important feature and that is better results—the assurance that every roll of film put into the tank by anybody, where the simple instructions are properly followed, will come out developed as well or better than that roll of film could have been developed by the most experienced photographer. The experience is in the tank.

THE PRICE

Brownie Kodak Film Tank.—For use with No. 1, No. 2 and No. 2 Folding Pocket Brownie Cartridges, complete, - - -	\$2.50
3½-inch Kodak Film Tank.—For use with all Kodak or Brownie Cartridges having a film width of 3½ inches or less, complete, - - -	5.00
5-inch Kodak Film Tank.—For use with all Kodak and Brownie Cartridges having a film width of 5 inches or less, complete, - - -	6.00
Kodak Tank Developer Powders, Brownie, per package of ½ dozen, - - -	.15
Ditto, for 3½-inch Tank, per package of ½ dozen, - - -	.20
Ditto, for 5-inch Tank, per package, ½ dozen, - - -	.25
Kodak Acid Fixing Powder, per ¼-pound package, - - -	.10
Ditto, per ½-pound package, - - -	.15
Ditto, per 1-pound package, - - -	.25



No. 2

BROWNIE DEVELOPING BOX

OFFERING the same assurance of perfectly developed film as the Kodak Film Tank, the Brownie Developing Box is a modified form of the same, so simple to use that any boy or girl can understand and operate it.

To develop, the roll of film is inserted in the spool carrier, and by means of a cord and winding shaft the film is unrolled and carried around a roller bearing, thus exposing the film to the action of the developer.

After development the developer is poured off and box filled with water to wash out developer, after which film is removed and fixed in daylight.

THE PRICE

No. 2 Brownie Developing Box, - - -	\$1.00
Brownie Developing Box Powders, per pack- age of 6, - - -	.15
Kodak Acid Fixing Powders, ½-pound pack- age, - - -	.15
Ditto, ¼-pound package, - - -	.10

THE KODAK METAL TRIPOD

AN ideal hand camera tripod, combining rigidity with light weight and compactness.



A revolving head with milled edges enables you to attach or tighten camera while the tripod is set up—an obvious advantage over the fixed head type.

The legs are made of brass tubing, each section telescoping into the section above it. The lower sections are nicked, the upper section is black enameled. A unique feature is that the construction permits the removing of any section for the replacing of a spring should one become inoperative through wear or accident.

When extended each section catches and holds firmly, but releases easily for closing. A permanently attached strap holds the legs in place when closed.

DETAIL

Weight, 24½ ounces. No. 1, four sections, 48½ inches extended, 15 inches closed; No. 2, five sections, 49½ inches extended, 13½ inches closed.

THE PRICE

Kodak Metal Tripod, No. 1	-	-	-	-	\$2.50
Kodak Metal Tripod, No. 2	-	-	-	-	3.25
Leather Carrying Case, for either style	-	-	-	-	1.50

KODAK PORTRAIT ATTACHMENT

AN auxiliary lens slipped on in front of the regular lens, by means of which the camera may be placed close to the subject and still produce a sharp picture. Give exact name of camera and shutter when ordering.

Kodak Portrait Attachment, - - - - \$.50

KODAK COLOR SCREENS

VERY desirable in photographing flowers, clouds and the like, as they hold back the strong blue rays, affording weaker colors time to record.

No. 1. For Nos. 1 and 1A Folding Pocket Kodaks, Nos. 2 and 2A Folding Brownie,	\$.50
No. 2. For No. 2A Brownie,	.50
No. 3. For Nos. 2, 1A Special and 3 F. P. Kodak and No. 3 Folding Brownie,	.75
No. 3 Special. For No. 3 Special Kodak,	.75
No. 4. For Nos. 2 and 3 Bulls-Eye, 2 Flexo and No. 3 Brownie,	.75
No. 5. For Nos. 3A, 4 and 4A Kodaks, No. 3A Folding Brownie,	1.00
No. 5 Special. For No. 3A Special Kodak,	1.00

IN FULL

This small booklet can give only an inkling of the good things contained in the Kodak line and fully described in the 1911 Kodak Catalogue.

Ask your dealer or write us for it.

EASTMAN KODAK CO.,
Rochester, N. Y.

H. B. BALTER
HOOVERVILLE, PA.